



Free Public Lecture

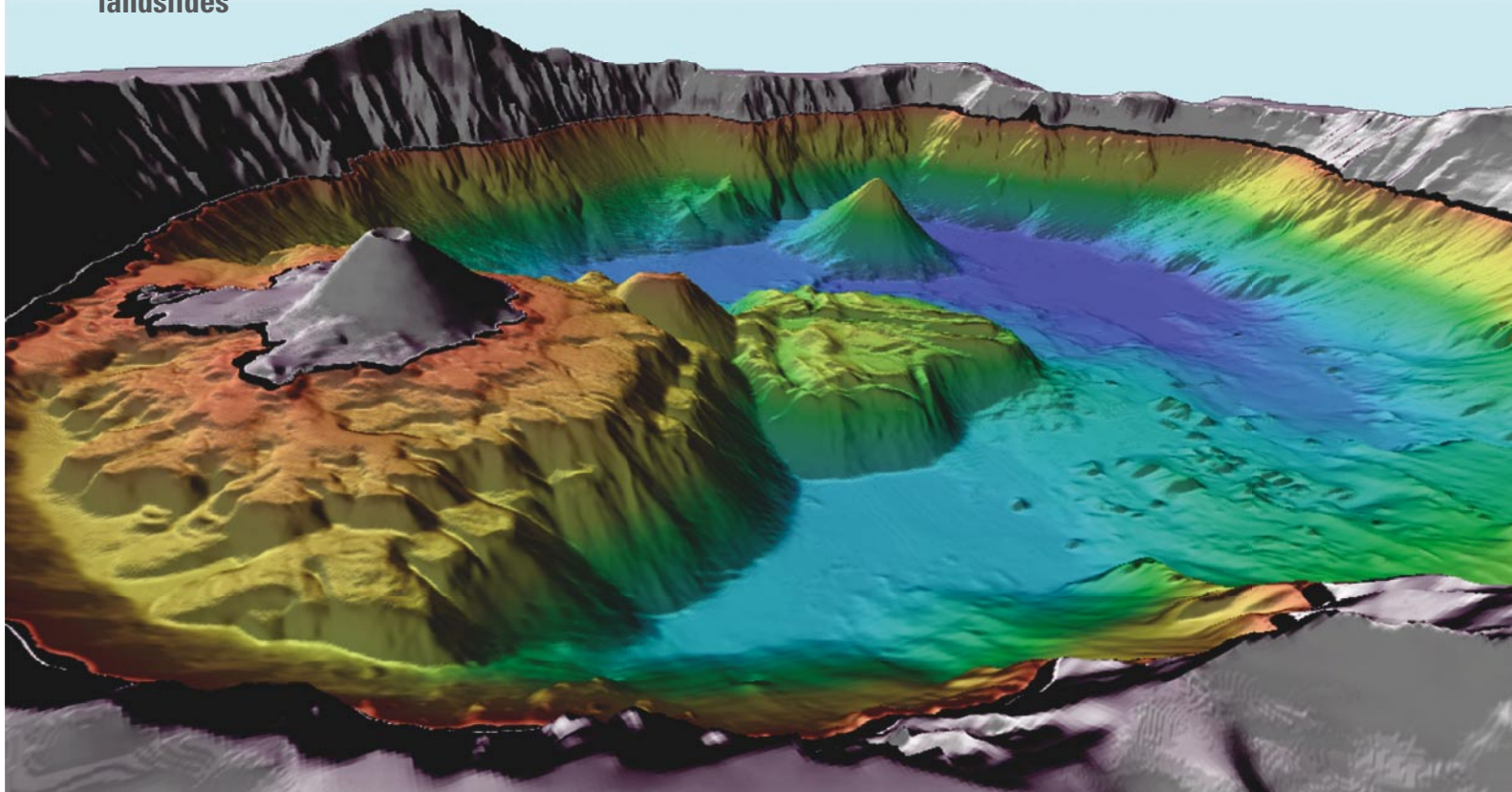
Beneath Crater Lake

An underwater volcanic landscape tells a complex tale

By Charles R. Bacon, Geologist

Visualizations presented by David W. Ramsey, Geologist

- Crater Lake, a jewel of the National Park system, partly fills a caldera basin formed during a giant volcanic eruption 7,700 years ago
- Deepest of all U.S. lakes, Crater Lake has no surface outlet—how does its fresh water leave the lake?
- Cooperative studies by USGS, National Park Service, and university scientists have probed the lake's secrets
- New high-precision echo sounding and GPS navigation techniques "strip away" the water to reveal volcanoes, lava deltas, and giant landslides



Thursday, September 25, 2003, 7:00 p.m.

USGS, Conference Room A, Bldg 3, Menlo Park, California

The Earth Science Information Center (Map and Publication Sales) in Building Three will remain open until 7:00 p.m. on the evening of the lecture. Map for lecture site on reverse.

For current information about the evening lecture series, call (650) 329-5000 or visit our website at <http://online.wr.usgs.gov/calendar/>

U.S. Department of the Interior • U.S. Geological Survey • Western Region Center