

Revealing the Hidden World Beneath Monterey Bay

By Steve Eittreim, Marine Geologist

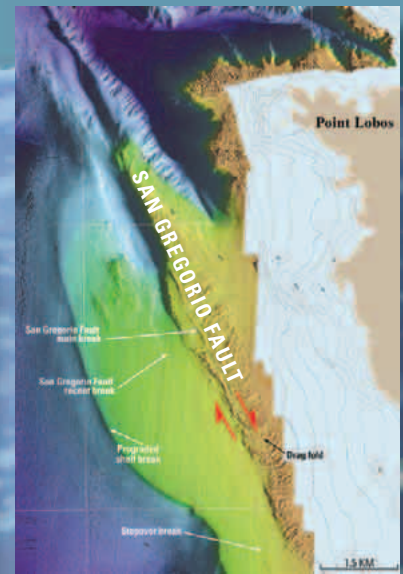
Explore the diverse features on and below the sea floor in the Monterey Bay National Marine Sanctuary

See—

- Drowned bedrock pinnacles that provide shelter for rockfish
- Earthquake faults that slice through the sea floor
- New, highly detailed views of the tortuous Monterey Canyon

Learn—

- About buried former seacliffs now 40 meters below sea level
- About Monterey Bay's muds that are migrating toward San Francisco
- About the value and importance of a marine sanctuary



Photograph courtesy Mary Yoklavich

Thursday, August 29, 2002, 7:00 pm
USGS, Conference Room A, Bldg 3, Menlo Park, CA

The Earth Science Information Center (Map and Publication Sales) in Building Three will remain open until 7:00 p.m. on the evening of the lecture. Map for lecture site on reverse
For information on USGS public events, call (650) 329-5000 or visit our website at <http://online.wr.usgs.gov/calendar/>

U.S. Department of the Interior • U.S. Geological Survey • Western Region Center



Background photograph: Kip Evans, NOAA