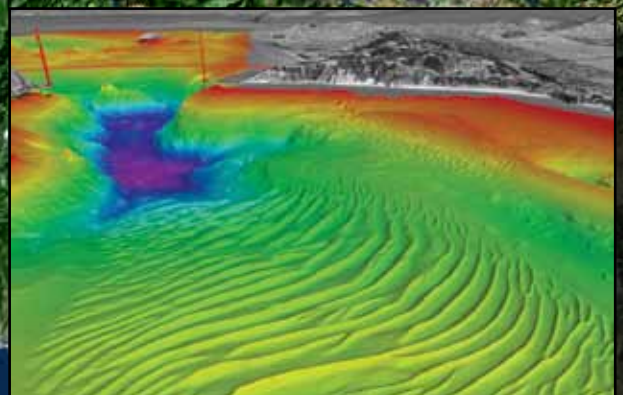
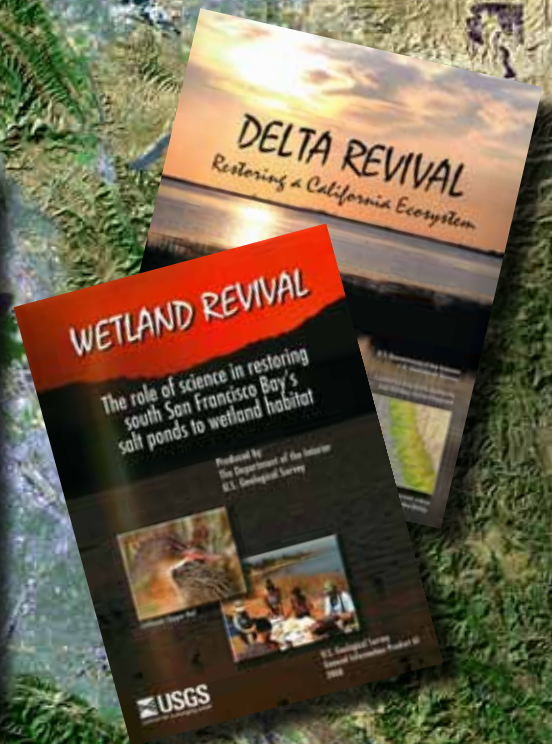


USGS Science for a Changing Bay Area

— a special USGS public lecture celebrating the inaugural Bay Area Science Festival

November 3, 2011 at 7 p.m.
USGS Menlo Park Science Center
345 Middlefield Road
Building 3
Conference Room A
(map on reverse)

USGS scientists will be speaking about current Bay Area research, including recent discoveries beneath Bay waters and the latest on earthquake research. The scientists will be presenting information in non-technical terms for the general public. Following the speakers, a "video theatre" will feature two award-winning USGS products, "Delta Revival" and "Wetland Revival," on scientists working to restore San Francisco Bay-Delta ecosystems.



Directions to U.S. Geological Survey

The USGS Menlo Park Science Center is located at 345 Middlefield Road in Menlo Park

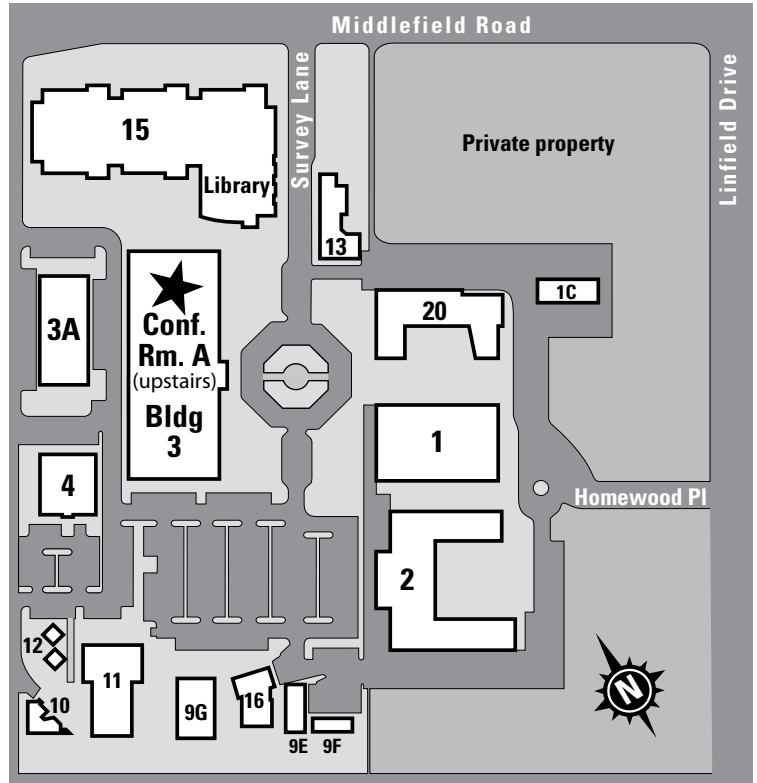
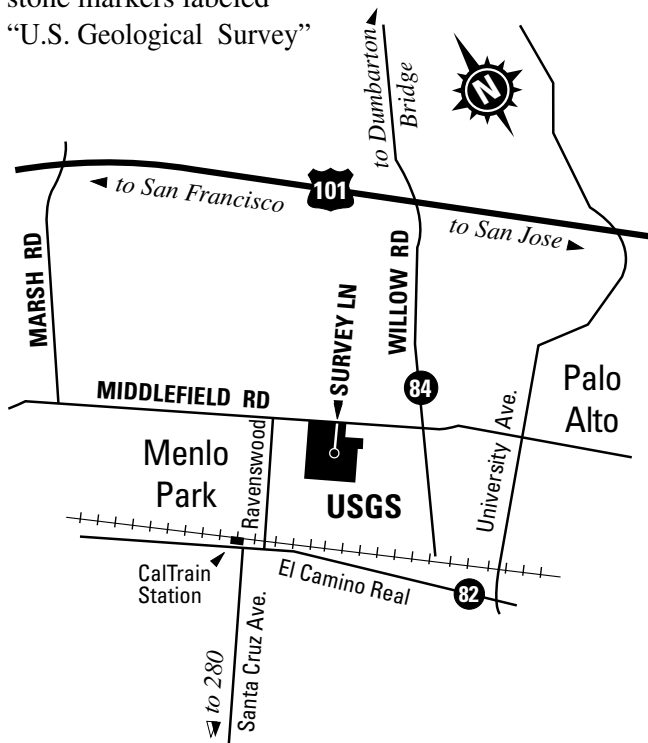
From San Francisco

- Exit highway 101 at Marsh Road, Atherton
- Go west to the T-junction with Middlefield Rd.
- Turn left (south)

From San Jose

- Exit highway 101 at Willow Road, Menlo Park
- Go west to Middlefield Rd.
- Turn right (north)

Enter the USGS campus at Survey Lane with large stone markers labeled “U.S. Geological Survey”



Special Assistance - Please contact us at least two weeks in advance of an event to request assistance. Special needs will be accommodated whenever possible. (650-329-5136)

Free USGS Public Lecture

For email announcements: abarrales2@usgs.gov



Office of Communications
U.S. Geological Survey – MS144
345 Middlefield Road
Menlo Park, CA 94025

FIRST CLASS POSTAGE

