

**Transmission of material in this release is embargoed until  
8:30 a.m. (EST) Friday, February 1, 2013**

USDL-13-0144

Technical information:

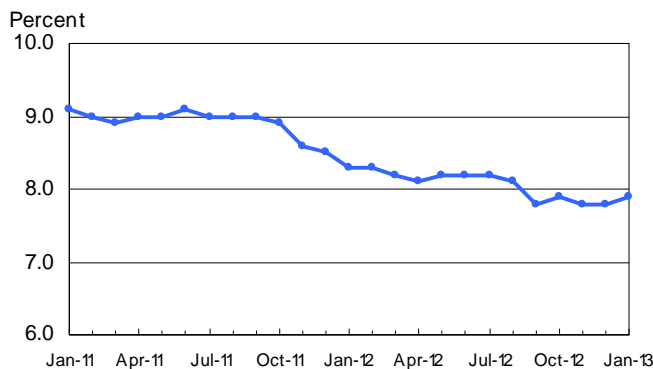
Household data: (202) 691-6378 • cpsinfo@bls.gov • www.bls.gov/cps  
Establishment data: (202) 691-6555 • cesinfo@bls.gov • www.bls.gov/ces

Media contact: (202) 691-5902 • PressOffice@bls.gov

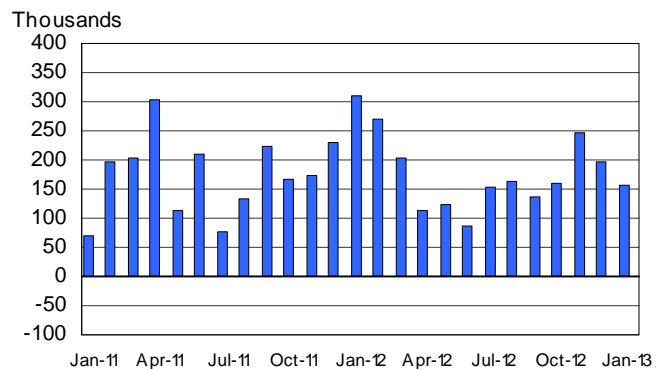
**THE EMPLOYMENT SITUATION — JANUARY 2013**

Total **nonfarm payroll employment** increased by 157,000 in January, and the **unemployment rate** was essentially unchanged at 7.9 percent, the U.S. Bureau of Labor Statistics reported today. Retail trade, construction, health care, and wholesale trade added jobs over the month.

**Chart 1. Unemployment rate, seasonally adjusted, January 2011 – January 2013**



**Chart 2. Nonfarm payroll employment over-the-month change, seasonally adjusted, January 2011 – January 2013**



**Changes to The Employment Situation Data**

Establishment survey data have been revised as a result of the annual benchmarking process and the updating of seasonal adjustment factors. Also, household survey data for January 2013 reflect updated population estimates. See the notes beginning on page 4 for more information about these changes.

## Household Survey Data

The number of **unemployed persons**, at 12.3 million, was little changed in January. The **unemployment rate** was 7.9 percent and has been at or near that level since September 2012. (See table A-1.) (See the note on page 5 and tables B and C for information about annual population adjustments to the household survey estimates.)

Among the **major worker groups**, the unemployment rates for adult men (7.3 percent), adult women (7.3 percent), teenagers (23.4 percent), whites (7.0 percent), blacks (13.8 percent), and Hispanics (9.7 percent) showed little or no change in January. The jobless rate for Asians was 6.5 percent (not seasonally adjusted), little changed from a year earlier. (See tables A-1, A-2, and A-3.)

In January, the number of **long-term unemployed** (those jobless for 27 weeks or more) was about unchanged at 4.7 million and accounted for 38.1 percent of the unemployed. (See table A-12.)

Both the **employment-population ratio** (58.6 percent) and the **civilian labor force participation rate** (63.6 percent) were unchanged in January. (See table A-1.)

The number of persons employed **part time for economic reasons**, at 8.0 million, changed little in January. These individuals were working part time because their hours had been cut back or because they were unable to find a full-time job. (See table A-8.)

In January, 2.4 million persons were **marginally attached to the labor force**, down by 366,000 from a year earlier. (The data are not seasonally adjusted.) These individuals were not in the labor force, wanted and were available for work, and had looked for a job sometime in the prior 12 months. They were not counted as unemployed because they had not searched for work in the 4 weeks preceding the survey. (See table A-16.)

Among the marginally attached, there were 804,000 **discouraged workers** in January, a decline of 255,000 from a year earlier. (The data are not seasonally adjusted.) Discouraged workers are persons not currently looking for work because they believe no jobs are available for them. The remaining 1.6 million persons marginally attached to the labor force in January had not searched for work in the 4 weeks preceding the survey for reasons such as school attendance or family responsibilities. (See table A-16.)

## Establishment Survey Data

Total **nonfarm payroll employment** increased by 157,000 in January. In 2012, employment growth averaged 181,000 per month. In January, job gains occurred in retail trade, construction, health care, and wholesale trade, while employment edged down in transportation and warehousing. (See table B-1.)

Employment in **retail trade** rose by 33,000 in January, compared with an average monthly gain of 20,000 in 2012. Within the industry, job growth continued in January in motor vehicle and parts dealers (+7,000), electronics and appliance stores (+5,000), and clothing stores (+10,000).

In January, employment in **construction** increased by 28,000. Nearly all of the job growth occurred in specialty trade contractors (+26,000), with the gain about equally split between residential and nonresidential specialty trade contractors. Since reaching a low in January 2011, construction employment has grown by 296,000, with one-third of the gain occurring in the last 4 months. However,

the January 2013 level of construction employment remained about 2 million below its previous peak level in April 2006.

**Health care** continued to add jobs in January (+23,000). Within health care, job growth occurred in ambulatory health care services (+28,000), which includes doctors' offices and outpatient care centers. This gain was partially offset by a loss of 8,000 jobs in nursing and residential care facilities. Over the year, health care employment has increased by 320,000.

Employment increased in **wholesale trade** (+15,000) in January, with most of the increase occurring in its nondurable goods component (+11,000). Since the recent low point in May 2010, wholesale trade has added 291,000 jobs.

**Mining** employment increased (+6,000) over the month; employment in this industry has risen by 23,000 over the past 3 months.

Employment edged down in **transportation and warehousing** in January (-14,000). Couriers and messengers lost 19,000 jobs over the month, following strong seasonal hiring in November and December. Air transportation employment decreased by 5,000 in January.

**Manufacturing** employment was essentially unchanged in January and has changed little, on net, since July 2012.

Employment in other major industries, including **financial activities, professional and businesses services, leisure and hospitality**, and **government**, showed little change over the month.

In January, the **average workweek for all employees** on private nonfarm payrolls was unchanged at 34.4 hours. The manufacturing workweek edged down by 0.1 hour to 40.6 hours, and factory overtime was unchanged at 3.3 hours. The average workweek for **production and nonsupervisory employees** on private nonfarm payrolls edged down by 0.1 hour to 33.6 hours. (See tables B-2 and B-7.)

**Average hourly earnings for all employees** on private nonfarm payrolls rose by 4 cents to \$23.78. Over the year, average hourly earnings have risen by 2.1 percent. In January, average hourly earnings of private-sector **production and nonsupervisory employees** increased by 5 cents to \$19.97. (See tables B-3 and B-8.)

The change in total nonfarm payroll employment for November was revised from +161,000 to +247,000, and the change for December was revised from +155,000 to +196,000. Monthly revisions result from additional reports received from businesses since the last published estimates and the monthly recalculation of seasonal factors. The annual benchmark process also contributed to these revisions.

---

**The Employment Situation for February is scheduled to be released on Friday, March 8, 2013, at 8:30 a.m. (EST).**

## Revisions to Establishment Survey Data

In accordance with annual practice, the establishment survey data released today have been benchmarked to reflect comprehensive counts of payroll jobs. These counts are derived principally from unemployment insurance tax records for March 2012. The benchmark process results in revisions to not seasonally adjusted data from April 2011 forward. Seasonally adjusted data from January 2008 forward are subject to revision. In addition, data for some series prior to 2008, both seasonally adjusted and unadjusted, incorporate minor revisions.

The total nonfarm employment level for March 2012 was revised upward by 422,000 (424,000 on a not seasonally adjusted basis). Table A presents revised total nonfarm employment data on a seasonally adjusted basis for January through December 2012.

All revised historical Current Employment Statistics (CES) data as well as an article that discusses the benchmark and post-benchmark revisions and other technical issues can be accessed through the CES homepage at [www.bls.gov/ces/](http://www.bls.gov/ces/). Information on the data released today also may be obtained by calling (202) 691-6555.

**Table A. Revisions in total nonfarm employment, January-December 2012, seasonally adjusted**  
(Numbers in thousands)

Year and month	Level			Over-the-month change		
	As previously published	As revised	Difference	As previously published	As revised	Difference
2012						
January.....	132,461	132,809	348	275	311	36
February.....	132,720	133,080	360	259	271	12
March.....	132,863	133,285	422	143	205	62
April.....	132,931	133,397	466	68	112	44
May.....	133,018	133,522	504	87	125	38
June.....	133,063	133,609	546	45	87	42
July.....	133,244	133,762	518	181	153	-28
August.....	133,436	133,927	491	192	165	-27
September.....	133,568	134,065	497	132	138	6
October.....	133,705	134,225	520	137	160	23
November.....	133,866	134,472	606	161	247	86
December (p).....	134,021	134,668	647	155	196	41

p = preliminary.

## Adjustments to Population Estimates for the Household Survey

Effective with data for January 2013, updated population estimates have been used in the household survey. Population estimates for the household survey are developed by the U.S. Census Bureau. Each year, the Census Bureau updates the estimates to reflect new information and assumptions about the growth of the population since the previous decennial census. The change in population reflected in the new estimates results from adjustments for net international migration, updated vital statistics and other information, and some methodological changes in the estimation process.

In accordance with usual practice, BLS will not revise the official household survey estimates for December 2012 and earlier months. To show the impact of the population adjustment, however, differences in selected December 2012 labor force series based on the old and new population estimates are shown in table B.

The adjustment increased the estimated size of the civilian noninstitutional population in December by 138,000, the civilian labor force by 136,000, employment by 127,000, unemployment by 9,000, and persons not in the labor force by 2,000. The total unemployment rate, employment-population ratio, and labor force participation rate were unaffected.

Data users are cautioned that these annual population adjustments affect the comparability of household data series over time. Table C shows the effect of the introduction of new population estimates on the comparison of selected labor force measures between December 2012 and January 2013. Additional information on the population adjustments and their effect on national labor force estimates are available at [www.bls.gov/cps/cps13adj.pdf](http://www.bls.gov/cps/cps13adj.pdf).

**Table B. Effect of the updated population controls on December 2012 estimates by sex, race, and Hispanic or Latino ethnicity, not seasonally adjusted**

(Numbers in thousands)

Category	Total	Men	Women	White	Black or African American	Asian	Hispanic or Latino ethnicity
Civilian noninstitutional population ...	138	41	98	-164	63	246	-218
Civilian labor force .....	136	49	87	-74	52	161	-156
Participation rate .....	.0	.0	.0	.0	.0	.0	.0
Employed .....	127	47	80	-64	44	150	-139
Employment-population ratio ..	.0	.0	.0	.0	.0	.0	.0
Unemployed .....	9	3	6	-11	8	12	-17
Unemployment rate .....	.0	.0	.0	.0	.0	.0	.0
Not in labor force .....	2	-9	11	-90	11	85	-62

NOTE: Detail may not sum to totals because of rounding. Estimates for the above race groups (white, black or African American, and Asian) do not sum to totals because data are not presented for all races. Persons whose ethnicity is identified as Hispanic or Latino may be of any race.

**Table C. December 2012-January 2013 changes in selected labor force measures, with adjustments for population control effects**

(Numbers in thousands)

Category	Dec.-Jan. change, as published	2013 population control effect	Dec.-Jan. change, after removing the population control effect <sup>1</sup>
Civilian noninstitutional population .....	313	138	175
Civilian labor force .....	143	136	7
Participation rate .....	.0	.0	.0
Employed .....	17	127	-110
Employment-population ratio .....	.0	.0	.0
Unemployed .....	126	9	117
Unemployment rate .....	.1	.0	.1
Not in labor force .....	169	2	167

<sup>1</sup> This Dec.-Jan. change is calculated by subtracting the population control effect from the over-the-month change in the published seasonally adjusted estimates.

NOTE: Detail may not sum to totals because of rounding.

**Adjustments to Veteran Population Estimates for the Household Survey**

Effective with data for January 2013, estimates for veterans in table 5 of this release incorporate population controls derived from an updated Department of Veterans Affairs' population model. Other tables in this release are not affected. In accordance with usual practice, BLS will not revise estimates in table 5 for December 2012 and earlier months.

# HOUSEHOLD DATA

## Summary table A. Household data, seasonally adjusted

[Numbers in thousands]

Category	Jan. 2012	Nov. 2012	Dec. 2012	Jan. 2013	Change from: Dec. 2012- Jan. 2013
<b>Employment status</b>					
Civilian noninstitutional population.....	242,269	244,174	244,350	244,663	-
Civilian labor force.....	154,356	155,319	155,511	155,654	-
Participation rate.....	63.7	63.6	63.6	63.6	-
Employed.....	141,608	143,277	143,305	143,322	-
Employment-population ratio.....	58.5	58.7	58.6	58.6	-
Unemployed.....	12,748	12,042	12,206	12,332	-
Unemployment rate.....	8.3	7.8	7.8	7.9	-
Not in labor force.....	87,913	88,855	88,839	89,008	-
<b>Unemployment rates</b>					
Total, 16 years and over.....	8.3	7.8	7.8	7.9	-
Adult men (20 years and over).....	7.7	7.2	7.2	7.3	-
Adult women (20 years and over).....	7.7	7.0	7.3	7.3	-
Teenagers (16 to 19 years).....	23.4	23.6	23.5	23.4	-
White.....	7.4	6.8	6.9	7.0	-
Black or African American.....	13.6	13.2	14.0	13.8	-
Asian (not seasonally adjusted).....	6.7	6.4	6.6	6.5	-
Hispanic or Latino ethnicity.....	10.5	9.9	9.6	9.7	-
Total, 25 years and over.....	7.0	6.5	6.5	6.5	-
Less than a high school diploma.....	13.1	12.1	11.7	12.0	-
High school graduates, no college.....	8.5	8.1	8.0	8.1	-
Some college or associate degree.....	7.3	6.6	6.9	7.0	-
Bachelor's degree and higher.....	4.2	3.9	3.9	3.7	-
<b>Reason for unemployment</b>					
Job losers and persons who completed temporary jobs.....	7,292	6,429	6,408	6,637	-
Job leavers.....	932	926	983	981	-
Reentrants.....	3,301	3,325	3,587	3,515	-
New entrants.....	1,258	1,326	1,291	1,287	-
<b>Duration of unemployment</b>					
Less than 5 weeks.....	2,495	2,596	2,676	2,766	-
5 to 14 weeks.....	2,874	2,757	2,838	3,028	-
15 to 26 weeks.....	1,944	1,820	1,895	1,858	-
27 weeks and over.....	5,522	4,784	4,766	4,708	-
<b>Employed persons at work part time</b>					
Part time for economic reasons.....	8,220	8,138	7,918	7,973	-
Slack work or business conditions.....	5,413	5,084	4,928	5,126	-
Could only find part-time work.....	2,558	2,648	2,616	2,630	-
Part time for noneconomic reasons.....	18,700	18,594	18,763	18,464	-
<b>Persons not in the labor force (not seasonally adjusted)</b>					
Marginally attached to the labor force.....	2,809	2,505	2,614	2,443	-
Discouraged workers.....	1,059	979	1,068	804	-

- December - January changes in household data are not shown due to the introduction of updated population controls.

NOTE: Persons whose ethnicity is identified as Hispanic or Latino may be of any race. Detail for the seasonally adjusted data shown in this table will not necessarily add to totals because of the independent seasonal adjustment of the various series. Updated population controls are introduced annually with the release of January data.

**ESTABLISHMENT DATA**  
**Summary table B. Establishment data, seasonally adjusted**

Category	Jan. 2012	Nov. 2012	Dec. 2012 <sup>p</sup>	Jan. 2013 <sup>p</sup>
<b>EMPLOYMENT BY SELECTED INDUSTRY</b> (Over-the-month change, in thousands)				
Total nonfarm.....	311	247	196	157
Total private.....	323	256	202	166
Goods-producing.....	72	43	44	36
Mining and logging.....	11	12	6	4
Construction.....	17	24	30	28
Manufacturing.....	44	7	8	4
Durable goods <sup>1</sup> .....	38	17	8	3
Motor vehicles and parts.....	7.5	9.7	1.9	2.5
Nondurable goods.....	6	-10	0	1
Private service-providing <sup>1</sup> .....	251	213	158	130
Wholesale trade.....	18.4	9.8	6.3	14.8
Retail trade.....	54.5	69.6	11.2	32.6
Transportation and warehousing.....	13.6	20.2	42.5	-14.2
Information.....	-12	14	-3	9
Financial activities.....	2	5	9	6
Professional and business services <sup>1</sup> .....	89	55	2	25
Temporary help services.....	30.0	26.5	9.1	-8.1
Education and health services <sup>1</sup> .....	26	14	50	25
Health care and social assistance.....	32.5	30.2	48.1	27.6
Leisure and hospitality.....	44	21	33	23
Other services.....	15	7	6	8
Government.....	-12	-9	-6	-9
<b>WOMEN AND PRODUCTION AND NONSUPERVISORY EMPLOYEES</b> AS A PERCENT OF ALL EMPLOYEES <sup>2</sup>				
Total nonfarm women employees.....	49.4	49.4	49.3	49.4
Total private women employees.....	47.8	47.9	47.9	47.9
Total private production and nonsupervisory employees.....	82.6	82.6	82.6	82.6
<b>HOURS AND EARNINGS</b> ALL EMPLOYEES				
<b>Total private</b>				
Average weekly hours.....	34.5	34.4	34.4	34.4
Average hourly earnings.....	\$ 23.28	\$ 23.67	\$ 23.74	\$ 23.78
Average weekly earnings.....	\$803.16	\$814.25	\$816.66	\$818.03
Index of aggregate weekly hours (2007=100) <sup>3</sup> .....	95.8	97.0	97.2	97.3
Over-the-month percent change.....	0.3	0.5	0.2	0.1
Index of aggregate weekly payrolls (2007=100) <sup>4</sup> .....	106.4	109.5	110.0	110.4
Over-the-month percent change.....	0.4	0.9	0.5	0.4
<b>HOURS AND EARNINGS</b> PRODUCTION AND NONSUPERVISORY EMPLOYEES				
<b>Total private</b>				
Average weekly hours.....	33.8	33.7	33.7	33.6
Average hourly earnings.....	\$ 19.61	\$ 19.88	\$ 19.92	\$ 19.97
Average weekly earnings.....	\$662.82	\$669.96	\$671.30	\$670.99
Index of aggregate weekly hours (2002=100) <sup>3</sup> .....	103.3	104.7	104.8	104.6
Over-the-month percent change.....	0.7	0.5	0.1	-0.2
Index of aggregate weekly payrolls (2002=100) <sup>4</sup> .....	135.3	138.9	139.5	139.5
Over-the-month percent change.....	0.8	0.7	0.4	0.0
<b>DIFFUSION INDEX</b> (Over 1-month span) <sup>5</sup>				
Total private (266 industries).....	72.2	63.9	64.5	59.6
Manufacturing (81 industries).....	71.6	52.5	54.9	48.1

1 Includes other industries, not shown separately.

2 Data relate to production employees in mining and logging and manufacturing, construction employees in construction, and nonsupervisory employees in the service-providing industries.

3 The indexes of aggregate weekly hours are calculated by dividing the current month's estimates of aggregate hours by the corresponding annual average aggregate hours.

4 The indexes of aggregate weekly payrolls are calculated by dividing the current month's estimates of aggregate weekly payrolls by the corresponding annual average aggregate weekly payrolls.

5 Figures are the percent of industries with employment increasing plus one-half of the industries with unchanged employment, where 50 percent indicates an equal balance between industries with increasing and decreasing employment.

p Preliminary

NOTE: Data have been revised to reflect March 2012 benchmark levels and updated seasonal adjustment factors.



# Frequently Asked Questions about Employment and Unemployment Estimates

## 1. Why are there two monthly measures of employment?

The household survey and establishment survey both produce sample-based estimates of employment, and both have strengths and limitations. The establishment survey employment series has a smaller margin of error on the measurement of month-to-month change than the household survey because of its much larger sample size. An over-the-month employment change of about 100,000 is statistically significant in the establishment survey, while the threshold for a statistically significant change in the household survey is about 400,000. However, the household survey has a more expansive scope than the establishment survey because it includes self-employed workers whose businesses are unincorporated, unpaid family workers, agricultural workers, and private household workers, who are excluded by the establishment survey. The household survey also provides estimates of employment for demographic groups. For more information on the differences between the two surveys, please visit [www.bls.gov/web/empsit/ces\\_cps\\_trends.pdf](http://www.bls.gov/web/empsit/ces_cps_trends.pdf).

## 2. Are undocumented immigrants counted in the surveys?

It is likely that both surveys include at least some undocumented immigrants. However, neither the establishment nor the household survey is designed to identify the legal status of workers. Therefore, it is not possible to determine how many are counted in either survey. The establishment survey does not collect data on the legal status of workers. The household survey does include questions which identify the foreign and native born, but it does not include questions about the legal status of the foreign born. Data on the foreign and native born are published each month in table A-7 of The Employment Situation news release.

## 3. Why does the establishment survey have revisions?

The establishment survey revises published estimates to improve its data series by incorporating additional information that was not available at the time of the initial publication of the estimates. The establishment survey revises its initial monthly estimates twice, in the immediately succeeding 2 months, to incorporate additional sample receipts from respondents in the survey and recalculated seasonal adjustment factors. For more information on the monthly revisions, please visit [www.bls.gov/ces/cesrevinfo.htm](http://www.bls.gov/ces/cesrevinfo.htm).

On an annual basis, the establishment survey incorporates a benchmark revision that re-anchors estimates to nearly complete employment counts available from unemployment insurance tax records. The benchmark helps to control for sampling and modeling errors in the estimates. For more information on the annual benchmark revision, please visit [www.bls.gov/web/empsit/cesbmart.htm](http://www.bls.gov/web/empsit/cesbmart.htm).

## 4. Does the establishment survey sample include small firms?

Yes; about 40 percent of the establishment survey sample is comprised of business establishments with fewer than 20 employees. The establishment survey sample is designed to maximize the reliability of the statewide total nonfarm employment estimate; firms from all states, size classes, and industries are appropriately sampled to achieve that goal.

## **5. Does the establishment survey account for employment from new businesses?**

Yes; monthly establishment survey estimates include an adjustment to account for the net employment change generated by business births and deaths. The adjustment comes from an econometric model that forecasts the monthly net jobs impact of business births and deaths based on the actual past values of the net impact that can be observed with a lag from the Quarterly Census of Employment and Wages. The establishment survey uses modeling rather than sampling for this purpose because the survey is not immediately able to bring new businesses into the sample. There is an unavoidable lag between the birth of a new firm and its appearance on the sampling frame and availability for selection. BLS adds new businesses to the survey twice a year.

## **6. Is the count of unemployed persons limited to just those people receiving unemployment insurance benefits?**

No; the estimate of unemployment is based on a monthly sample survey of households. All persons who are without jobs and are actively seeking and available to work are included among the unemployed. (People on temporary layoff are included even if they do not actively seek work.) There is no requirement or question relating to unemployment insurance benefits in the monthly survey.

## **7. Does the official unemployment rate exclude people who want a job but are not currently looking for work?**

Yes; however, there are separate estimates of persons outside the labor force who want a job, including those who are not currently looking because they believe no jobs are available (discouraged workers). In addition, alternative measures of labor underutilization (some of which include discouraged workers and other groups not officially counted as unemployed) are published each month in table A-15 of The Employment Situation news release. For more information about these alternative measures, please visit [www.bls.gov/cps/lfcharacteristics.htm#altmeasures](http://www.bls.gov/cps/lfcharacteristics.htm#altmeasures).

## **8. How can unusually severe weather affect employment and hours estimates?**

In the establishment survey, the reference period is the pay period that includes the 12th of the month. Unusually severe weather is more likely to have an impact on average weekly hours than on employment. Average weekly hours are estimated for paid time during the pay period, including pay for holidays, sick leave, or other time off. The impact of severe weather on hours estimates typically, but not always, results in a reduction in average weekly hours. For example, some employees may be off work for part of the pay period and not receive pay for the time missed, while some workers, such as those dealing with cleanup or repair, may work extra hours.

In order for severe weather conditions to reduce the estimate of payroll employment, employees have to be off work without pay for the entire pay period. Slightly more than 20 percent of all employees in the payroll survey sample have a weekly pay period. Employees who receive pay for any part of the pay period, even 1 hour, are counted in the payroll employment figures. It is not possible to quantify the effect of extreme weather on estimates of over-the-month change in employment.

In the household survey, the reference period is generally the calendar week that includes the 12th of the month. Persons who miss the entire week's work for weather-related events are counted as employed whether or not they are paid for the time off. The household survey collects data on the number of persons who had a job but were not at work due to bad weather. It also provides a measure of the number of persons who usually work full time but had reduced hours. Current and historical data are available on the household survey's most requested statistics page at <http://data.bls.gov/cgi-bin/surveymost?ln>.

# Technical Note

This news release presents statistics from two major surveys, the Current Population Survey (CPS; household survey) and the Current Employment Statistics survey (CES; establishment survey). The household survey provides information on the labor force, employment, and unemployment that appears in the "A" tables, marked HOUSEHOLD DATA. It is a sample survey of about 60,000 eligible households conducted by the U.S. Census Bureau for the U.S. Bureau of Labor Statistics (BLS).

The establishment survey provides information on employment, hours, and earnings of employees on nonfarm payrolls; the data appear in the "B" tables, marked ESTABLISHMENT DATA. BLS collects these data each month from the payroll records of a sample of nonagricultural business establishments. Each month the CES program surveys about 145,000 businesses and government agencies, representing approximately 557,000 individual worksites, in order to provide detailed industry data on employment, hours, and earnings of workers on nonfarm payrolls. The active sample includes approximately one-third of all nonfarm payroll employees.

For both surveys, the data for a given month relate to a particular week or pay period. In the household survey, the reference period is generally the calendar week that contains the 12th day of the month. In the establishment survey, the reference period is the pay period including the 12th, which may or may not correspond directly to the calendar week.

## Coverage, definitions, and differences between surveys

**Household survey.** The sample is selected to reflect the entire civilian noninstitutional population. Based on responses to a series of questions on work and job search activities, each person 16 years and over in a sample household is classified as employed, unemployed, or not in the labor force.

People are classified as *employed* if they did any work at all as paid employees during the reference week; worked in their own business, profession, or on their own farm; or worked without pay at least 15 hours in a family business or farm. People are also counted as employed if they were temporarily absent from their jobs because of illness, bad weather, vacation, labor-management disputes, or personal reasons.

People are classified as *unemployed* if they meet all of the following criteria: they had no employment during the reference week; they were available for work at that time; and they made specific efforts to find employment sometime during the 4-week period ending with the reference week. Persons laid off from a job and expecting recall need not be looking for work to be counted as unemployed. The unemployment data derived from the household survey in no way depend upon the eligibility for or receipt of unemployment insurance benefits.

The *civilian labor force* is the sum of employed and unemployed persons. Those persons not classified as

employed or unemployed are *not in the labor force*. The *unemployment rate* is the number unemployed as a percent of the labor force. The *labor force participation rate* is the labor force as a percent of the population, and the *employment-population ratio* is the employed as a percent of the population. Additional information about the household survey can be found at [www.bls.gov/cps/documentation.htm](http://www.bls.gov/cps/documentation.htm).

**Establishment survey.** The sample establishments are drawn from private nonfarm businesses such as factories, offices, and stores, as well as from federal, state, and local government entities. *Employees on nonfarm payrolls* are those who received pay for any part of the reference pay period, including persons on paid leave. Persons are counted in each job they hold. *Hours and earnings* data are produced for the private sector for all employees and for production and nonsupervisory employees. *Production and nonsupervisory* employees are defined as production and related employees in manufacturing and mining and logging, construction workers in construction, and non-supervisory employees in private service-providing industries.

Industries are classified on the basis of an establishment's principal activity in accordance with the 2012 version of the North American Industry Classification System. Additional information about the establishment survey can be found at [www.bls.gov/ces/](http://www.bls.gov/ces/).

**Differences in employment estimates.** The numerous conceptual and methodological differences between the household and establishment surveys result in important distinctions in the employment estimates derived from the surveys. Among these are:

- The household survey includes agricultural workers, self-employed workers whose businesses are unincorporated, unpaid family workers, and private household workers among the employed. These groups are excluded from the establishment survey.
- The household survey includes people on unpaid leave among the employed. The establishment survey does not.
- The household survey is limited to workers 16 years of age and older. The establishment survey is not limited by age.
- The household survey has no duplication of individuals, because individuals are counted only once, even if they hold more than one job. In the establishment survey, employees working at more than one job and thus appearing on more than one payroll are counted separately for each appearance.

## Seasonal adjustment

Over the course of a year, the size of the nation's labor force and the levels of employment and unemployment undergo regularly occurring fluctuations. These events may result from seasonal changes in weather, major holidays, and the opening and closing of schools. The effect of such seasonal variation can be very large.

Because these seasonal events follow a more or less regular pattern each year, their influence on the level of a series can be tempered by adjusting for regular seasonal variation. These adjustments make nonseasonal developments, such as declines in employment or increases in the participation of women in the labor force, easier to spot. For example, in the household survey, the large number of youth entering the labor force each June is likely to obscure any other changes that have taken place relative to May, making it difficult to determine if the level of economic activity has risen or declined. Similarly, in the establishment survey, payroll employment in education declines by about 20 percent at the end of the spring term and later rises with the start of the fall term, obscuring the underlying employment trends in the industry. Because seasonal employment changes at the end and beginning of the school year can be estimated, the statistics can be adjusted to make underlying employment patterns more discernable. The seasonally adjusted figures provide a more useful tool with which to analyze changes in month-to-month economic activity.

Many seasonally adjusted series are independently adjusted in both the household and establishment surveys. However, the adjusted series for many major estimates, such as total payroll employment, employment in most major sectors, total employment, and unemployment are computed by aggregating independently adjusted component series. For example, total unemployment is derived by summing the adjusted series for four major age-sex components; this differs from the unemployment estimate that would be obtained by directly adjusting the total or by combining the duration, reasons, or more detailed age categories.

For both the household and establishment surveys, a concurrent seasonal adjustment methodology is used in which new seasonal factors are calculated each month using all relevant data, up to and including the data for the current month. In the household survey, new seasonal factors are used to adjust only the current month's data. In the establishment survey, however, new seasonal factors are used each month to adjust the three most recent monthly estimates. The prior 2 months are routinely revised to incorporate additional sample reports and recalculated seasonal adjustment factors. In both surveys, 5-year revisions to historical data are made once a year.

## Reliability of the estimates

Statistics based on the household and establishment surveys are subject to both sampling and nonsampling

error. When a sample, rather than the entire population, is surveyed, there is a chance that the sample estimates may differ from the true population values they represent. The component of this difference that occurs because samples differ by chance is known as *sampling error*, and its variability is measured by the standard error of the estimate. There is about a 90-percent chance, or level of confidence, that an estimate based on a sample will differ by no more than 1.6 standard errors from the true population value because of sampling error. BLS analyses are generally conducted at the 90-percent level of confidence.

For example, the confidence interval for the monthly change in total nonfarm employment from the establishment survey is on the order of plus or minus 90,000. Suppose the estimate of nonfarm employment increases by 50,000 from one month to the next. The 90-percent confidence interval on the monthly change would range from -60,000 to +140,000 (50,000 +/- 90,000). These figures do not mean that the sample results are off by these magnitudes, but rather that there is about a 90-percent chance that the true over-the-month change lies within this interval. Since this range includes values of less than zero, we could not say with confidence that nonfarm employment had, in fact, increased that month. If, however, the reported nonfarm employment rise was 250,000, then all of the values within the 90-percent confidence interval would be greater than zero. In this case, it is likely (at least a 90-percent chance) that nonfarm employment had, in fact, risen that month. At an unemployment rate of around 6.0 percent, the 90-percent confidence interval for the monthly change in unemployment as measured by the household survey is about +/- 300,000, and for the monthly change in the unemployment rate it is about +/- 0.2 percentage point.

In general, estimates involving many individuals or establishments have lower standard errors (relative to the size of the estimate) than estimates which are based on a small number of observations. The precision of estimates also is improved when the data are cumulated over time, such as for quarterly and annual averages.

The household and establishment surveys are also affected by *nonsampling error*, which can occur for many reasons, including the failure to sample a segment of the population, inability to obtain information for all respondents in the sample, inability or unwillingness of respondents to provide correct information on a timely basis, mistakes made by respondents, and errors made in the collection or processing of the data.

For example, in the establishment survey, estimates for the most recent 2 months are based on incomplete returns; for this reason, these estimates are labeled preliminary in the tables. It is only after two successive revisions to a monthly estimate, when nearly all sample reports have been received, that the estimate is considered final.

Another major source of nonsampling error in the establishment survey is the inability to capture, on a timely basis, employment generated by new firms. To correct for this systematic underestimation of employment growth, an estimation procedure with two components is used to

account for business births. The first component excludes employment losses from business deaths from sample-based estimation in order to offset the missing employment gains from business births. This is incorporated into the sample-based estimation procedure by simply not reflecting sample units going out of business, but imputing to them the same employment trend as the other firms in the sample. This procedure accounts for most of the net birth/death employment.

The second component is an ARIMA time series model designed to estimate the residual net birth/death employment not accounted for by the imputation. The historical time series used to create and test the ARIMA model was derived from the unemployment insurance universe micro-level database, and reflects the actual residual net of births and deaths over the past 5 years.

The sample-based estimates from the establishment

survey are adjusted once a year (on a lagged basis) to universe counts of payroll employment obtained from administrative records of the unemployment insurance program. The difference between the March sample-based employment estimates and the March universe counts is known as a benchmark revision, and serves as a rough proxy for total survey error. The new benchmarks also incorporate changes in the classification of industries. Over the past decade, absolute benchmark revisions for total nonfarm employment have averaged 0.3 percent, with a range from -0.7 to 0.6 percent.

#### **Other information**

Information in this release will be made available to sensory impaired individuals upon request. Voice phone: (202) 691-5200; Federal Relay Service: (800) 877-8339.

# HOUSEHOLD DATA

## Table A-1. Employment status of the civilian population by sex and age

[Numbers in thousands]

Employment status, sex, and age	Not seasonally adjusted			Seasonally adjusted <sup>1</sup>					
	Jan. 2012	Dec. 2012	Jan. 2013	Jan. 2012	Sept. 2012	Oct. 2012	Nov. 2012	Dec. 2012	Jan. 2013
<b>TOTAL</b>									
Civilian noninstitutional population.....	242,269	244,350	244,663	242,269	243,772	243,983	244,174	244,350	244,663
Civilian labor force.....	153,485	154,904	154,794	154,356	155,056	155,576	155,319	155,511	155,654
Participation rate.....	63.4	63.4	63.3	63.7	63.6	63.8	63.6	63.6	63.6
Employed.....	139,944	143,060	141,614	141,608	142,974	143,328	143,277	143,305	143,322
Employment-population ratio.....	57.8	58.5	57.9	58.5	58.7	58.7	58.7	58.6	58.6
Unemployed.....	13,541	11,844	13,181	12,748	12,082	12,248	12,042	12,206	12,332
Unemployment rate.....	8.8	7.6	8.5	8.3	7.8	7.9	7.8	7.8	7.9
Not in labor force.....	88,784	89,445	89,868	87,913	88,716	88,407	88,855	88,839	89,008
Persons who currently want a job.....	6,495	6,532	6,781	6,313	6,718	6,584	6,827	6,750	6,631
<b>Men, 16 years and over</b>									
Civilian noninstitutional population.....	116,808	117,902	118,033	116,808	117,600	117,710	117,810	117,902	118,033
Civilian labor force.....	81,298	82,190	82,249	82,052	82,396	82,661	82,514	82,545	82,940
Participation rate.....	69.6	69.7	69.7	70.2	70.1	70.2	70.0	70.0	70.3
Employed.....	73,772	75,686	74,823	75,257	75,769	76,027	75,983	76,060	76,290
Employment-population ratio.....	63.2	64.2	63.4	64.4	64.4	64.6	64.5	64.5	64.6
Unemployed.....	7,526	6,503	7,426	6,794	6,627	6,634	6,530	6,486	6,650
Unemployment rate.....	9.3	7.9	9.0	8.3	8.0	8.0	7.9	7.9	8.0
Not in labor force.....	35,510	35,712	35,783	34,756	35,205	35,049	35,297	35,357	35,093
<b>Men, 20 years and over</b>									
Civilian noninstitutional population.....	108,087	109,308	109,448	108,087	108,973	109,096	109,206	109,308	109,448
Civilian labor force.....	78,710	79,552	79,583	79,203	79,436	79,679	79,568	79,695	80,016
Participation rate.....	72.8	72.8	72.7	73.3	72.9	73.0	72.9	72.9	73.1
Employed.....	71,892	73,716	72,905	73,138	73,612	73,845	73,821	73,949	74,139
Employment-population ratio.....	66.5	67.4	66.6	67.7	67.6	67.7	67.6	67.7	67.7
Unemployed.....	6,818	5,836	6,678	6,065	5,825	5,834	5,747	5,746	5,877
Unemployment rate.....	8.7	7.3	8.4	7.7	7.3	7.3	7.2	7.2	7.3
Not in labor force.....	29,377	29,756	29,865	28,885	29,536	29,416	29,638	29,613	29,432
<b>Women, 16 years and over</b>									
Civilian noninstitutional population.....	125,461	126,447	126,630	125,461	126,172	126,273	126,364	126,447	126,630
Civilian labor force.....	72,187	72,715	72,545	72,304	72,661	72,915	72,806	72,965	72,715
Participation rate.....	57.5	57.5	57.3	57.6	57.6	57.7	57.6	57.7	57.4
Employed.....	66,172	67,373	66,790	66,351	67,206	67,301	67,294	67,245	67,032
Employment-population ratio.....	52.7	53.3	52.7	52.9	53.3	53.3	53.3	53.2	52.9
Unemployed.....	6,015	5,341	5,755	5,953	5,455	5,614	5,512	5,721	5,682
Unemployment rate.....	8.3	7.3	7.9	8.2	7.5	7.7	7.6	7.8	7.8
Not in labor force.....	53,274	53,733	54,085	53,157	53,511	53,358	53,558	53,482	53,916
<b>Women, 20 years and over</b>									
Civilian noninstitutional population.....	117,082	118,170	118,348	117,082	117,869	117,980	118,079	118,170	118,348
Civilian labor force.....	69,513	69,980	69,778	69,420	69,813	70,041	69,907	70,059	69,749
Participation rate.....	59.4	59.2	59.0	59.3	59.2	59.4	59.2	59.3	58.9
Employed.....	64,062	65,152	64,589	64,080	64,934	65,014	64,988	64,954	64,675
Employment-population ratio.....	54.7	55.1	54.6	54.7	55.1	55.1	55.0	55.0	54.6
Unemployed.....	5,451	4,828	5,189	5,341	4,879	5,027	4,918	5,105	5,074
Unemployment rate.....	7.8	6.9	7.4	7.7	7.0	7.2	7.0	7.3	7.3
Not in labor force.....	47,569	48,190	48,570	47,662	48,056	47,939	48,172	48,111	48,599
<b>Both sexes, 16 to 19 years</b>									
Civilian noninstitutional population.....	17,100	16,871	16,867	17,100	16,931	16,907	16,890	16,871	16,867
Civilian labor force.....	5,262	5,372	5,434	5,733	5,807	5,856	5,845	5,756	5,889
Participation rate.....	30.8	31.8	32.2	33.5	34.3	34.6	34.6	34.1	34.9
Employed.....	3,990	4,192	4,120	4,391	4,429	4,469	4,468	4,402	4,508
Employment-population ratio.....	23.3	24.8	24.4	25.7	26.2	26.4	26.5	26.1	26.7
Unemployed.....	1,272	1,180	1,314	1,342	1,378	1,387	1,376	1,355	1,381
Unemployment rate.....	24.2	22.0	24.2	23.4	23.7	23.7	23.6	23.5	23.4
Not in labor force.....	11,837	11,499	11,434	11,367	11,124	11,051	11,045	11,115	10,978

<sup>1</sup> The population figures are not adjusted for seasonal variation; therefore, identical numbers appear in the unadjusted and seasonally adjusted columns.

NOTE: Updated population controls are introduced annually with the release of January data.

**HOUSEHOLD DATA**

**Table A-2. Employment status of the civilian population by race, sex, and age**

[Numbers in thousands]

Employment status, race, sex, and age	Not seasonally adjusted			Seasonally adjusted <sup>1</sup>					
	Jan. 2012	Dec. 2012	Jan. 2013	Jan. 2012	Sept. 2012	Oct. 2012	Nov. 2012	Dec. 2012	Jan. 2013
<b>WHITE</b>									
Civilian noninstitutional population.....	192,600	193,849	193,776	192,600	193,503	193,633	193,748	193,849	193,776
Civilian labor force.....	122,750	123,404	123,090	123,615	123,637	123,794	123,540	123,774	123,971
Participation rate.....	63.7	63.7	63.5	64.2	63.9	63.9	63.8	63.9	64.0
Employed.....	112,876	115,213	113,675	114,442	115,002	115,205	115,124	115,289	115,266
Employment-population ratio.....	58.6	59.4	58.7	59.4	59.4	59.5	59.4	59.5	59.5
Unemployed.....	9,874	8,191	9,415	9,174	8,635	8,588	8,416	8,485	8,705
Unemployment rate.....	8.0	6.6	7.6	7.4	7.0	6.9	6.8	6.9	7.0
Not in labor force.....	69,850	70,445	70,686	68,984	69,866	69,839	70,207	70,076	69,805
<b>Men, 20 years and over</b>									
Civilian labor force.....	64,081	64,562	64,506	64,501	64,540	64,718	64,509	64,646	64,924
Participation rate.....	73.3	73.2	73.2	73.8	73.4	73.5	73.2	73.3	73.7
Employed.....	58,966	60,415	59,587	60,022	60,292	60,493	60,397	60,609	60,652
Employment-population ratio.....	67.5	68.5	67.6	68.7	68.5	68.7	68.5	68.7	68.8
Unemployed.....	5,115	4,148	4,919	4,479	4,248	4,225	4,112	4,037	4,272
Unemployment rate.....	8.0	6.4	7.6	6.9	6.6	6.5	6.4	6.2	6.6
<b>Women, 20 years and over</b>									
Civilian labor force.....	54,422	54,494	54,250	54,459	54,500	54,423	54,366	54,452	54,318
Participation rate.....	58.9	58.5	58.3	58.9	58.7	58.5	58.4	58.5	58.4
Employed.....	50,602	51,303	50,688	50,755	51,085	51,020	51,008	51,015	50,869
Employment-population ratio.....	54.7	55.1	54.5	54.9	55.0	54.9	54.8	54.8	54.7
Unemployed.....	3,820	3,191	3,562	3,704	3,415	3,403	3,358	3,437	3,450
Unemployment rate.....	7.0	5.9	6.6	6.8	6.3	6.3	6.2	6.3	6.4
<b>Both sexes, 16 to 19 years</b>									
Civilian labor force.....	4,247	4,348	4,334	4,656	4,598	4,653	4,665	4,676	4,729
Participation rate.....	33.3	34.6	34.5	36.6	36.4	36.9	37.0	37.2	37.7
Employed.....	3,308	3,495	3,400	3,664	3,625	3,692	3,718	3,665	3,746
Employment-population ratio.....	26.0	27.8	27.1	28.8	28.7	29.3	29.5	29.1	29.8
Unemployed.....	938	853	934	991	972	961	946	1,011	983
Unemployment rate.....	22.1	19.6	21.5	21.3	21.1	20.7	20.3	21.6	20.8
<b>BLACK OR AFRICAN AMERICAN</b>									
Civilian noninstitutional population.....	29,727	30,093	30,190	29,727	29,991	30,027	30,061	30,093	30,190
Civilian labor force.....	18,074	18,350	18,554	18,206	18,346	18,716	18,374	18,403	18,641
Participation rate.....	60.8	61.0	61.5	61.2	61.2	62.3	61.1	61.2	61.7
Employed.....	15,512	15,832	15,897	15,733	15,891	16,011	15,952	15,827	16,073
Employment-population ratio.....	52.2	52.6	52.7	52.9	53.0	53.3	53.1	52.6	53.2
Unemployed.....	2,561	2,518	2,656	2,472	2,456	2,705	2,422	2,577	2,568
Unemployment rate.....	14.2	13.7	14.3	13.6	13.4	14.5	13.2	14.0	13.8
Not in labor force.....	11,653	11,743	11,636	11,522	11,645	11,311	11,687	11,690	11,549
<b>Men, 20 years and over</b>									
Civilian labor force.....	8,238	8,313	8,391	8,254	8,214	8,296	8,225	8,298	8,382
Participation rate.....	68.2	67.5	67.9	68.4	67.1	67.6	66.9	67.4	67.8
Employed.....	7,083	7,162	7,181	7,197	7,052	7,127	7,165	7,134	7,262
Employment-population ratio.....	58.7	58.2	58.1	59.6	57.6	58.1	58.3	58.0	58.8
Unemployed.....	1,155	1,150	1,210	1,058	1,162	1,169	1,060	1,164	1,120
Unemployment rate.....	14.0	13.8	14.4	12.8	14.1	14.1	12.9	14.0	13.4
<b>Women, 20 years and over</b>									
Civilian labor force.....	9,230	9,438	9,512	9,278	9,377	9,668	9,444	9,454	9,545
Participation rate.....	61.7	62.1	62.4	62.0	62.0	63.8	62.3	62.2	62.7
Employed.....	8,068	8,298	8,323	8,119	8,363	8,440	8,360	8,305	8,367
Employment-population ratio.....	53.9	54.6	54.6	54.2	55.3	55.7	55.1	54.7	54.9
Unemployed.....	1,162	1,140	1,189	1,160	1,014	1,228	1,085	1,149	1,178
Unemployment rate.....	12.6	12.1	12.5	12.5	10.8	12.7	11.5	12.2	12.3
<b>Both sexes, 16 to 19 years</b>									
Civilian labor force.....	605	600	651	673	756	752	704	651	714
Participation rate.....	22.5	23.1	25.0	25.1	28.8	28.7	27.0	25.1	27.5
Employed.....	361	371	393	418	475	444	427	387	444
Employment-population ratio.....	13.4	14.3	15.1	15.6	18.1	17.0	16.4	14.9	17.1
Unemployed.....	244	228	258	255	280	307	277	264	270
Unemployment rate.....	40.3	38.0	39.6	37.9	37.1	40.9	39.3	40.5	37.8
<b>ASIAN</b>									
Civilian noninstitutional population.....	12,735	12,935	13,068	-	-	-	-	-	-

See footnotes at end of table.

**HOUSEHOLD DATA**

**Table A-2. Employment status of the civilian population by race, sex, and age — Continued**

[Numbers in thousands]

Employment status, race, sex, and age	Not seasonally adjusted			Seasonally adjusted <sup>1</sup>					
	Jan. 2012	Dec. 2012	Jan. 2013	Jan. 2012	Sept. 2012	Oct. 2012	Nov. 2012	Dec. 2012	Jan. 2013
Civilian labor force.....	8,158	8,501	8,465	—	—	—	—	—	—
Participation rate.....	64.1	65.7	64.8	—	—	—	—	—	—
Employed.....	7,608	7,940	7,917	—	—	—	—	—	—
Employment-population ratio.....	59.7	61.4	60.6	—	—	—	—	—	—
Unemployed.....	549	561	548	—	—	—	—	—	—
Unemployment rate.....	6.7	6.6	6.5	—	—	—	—	—	—
Not in labor force.....	4,577	4,434	4,603	—	—	—	—	—	—

<sup>1</sup> The population figures are not adjusted for seasonal variation; therefore, identical numbers appear in the unadjusted and seasonally adjusted columns.

- Data not available.

NOTE: Estimates for the above race groups will not sum to totals shown in table A-1 because data are not presented for all races. Updated population controls are introduced annually with the release of January data.



**HOUSEHOLD DATA**

**Table A-3. Employment status of the Hispanic or Latino population by sex and age**

[Numbers in thousands]

Employment status, sex, and age	Not seasonally adjusted			Seasonally adjusted <sup>1</sup>					
	Jan. 2012	Dec. 2012	Jan. 2013	Jan. 2012	Sept. 2012	Oct. 2012	Nov. 2012	Dec. 2012	Jan. 2013
<b>HISPANIC OR LATINO ETHNICITY</b>									
Civilian noninstitutional population.....	36,301	37,231	37,094	36,301	36,969	37,058	37,147	37,231	37,094
Civilian labor force.....	23,949	24,487	24,454	24,040	24,465	24,572	24,544	24,539	24,572
Participation rate.....	66.0	65.8	65.9	66.2	66.2	66.3	66.1	65.9	66.2
Employed.....	21,187	22,137	21,875	21,505	22,042	22,112	22,109	22,195	22,199
Employment-population ratio.....	58.4	59.5	59.0	59.2	59.6	59.7	59.5	59.6	59.8
Unemployed.....	2,762	2,350	2,578	2,535	2,422	2,460	2,435	2,344	2,373
Unemployment rate.....	11.5	9.6	10.5	10.5	9.9	10.0	9.9	9.6	9.7
Not in labor force.....	12,352	12,744	12,640	12,261	12,505	12,486	12,602	12,692	12,522
<b>Men, 20 years and over</b>									
Civilian labor force.....	13,252	13,500	13,465	-	-	-	-	-	-
Participation rate.....	81.2	80.3	80.6	-	-	-	-	-	-
Employed.....	11,832	12,366	12,155	-	-	-	-	-	-
Employment-population ratio.....	72.5	73.6	72.7	-	-	-	-	-	-
Unemployed.....	1,421	1,134	1,309	-	-	-	-	-	-
Unemployment rate.....	10.7	8.4	9.7	-	-	-	-	-	-
<b>Women, 20 years and over</b>									
Civilian labor force.....	9,703	9,941	9,903	-	-	-	-	-	-
Participation rate.....	59.4	59.3	59.2	-	-	-	-	-	-
Employed.....	8,609	9,004	8,922	-	-	-	-	-	-
Employment-population ratio.....	52.7	53.7	53.3	-	-	-	-	-	-
Unemployed.....	1,094	938	981	-	-	-	-	-	-
Unemployment rate.....	11.3	9.4	9.9	-	-	-	-	-	-
<b>Both sexes, 16 to 19 years</b>									
Civilian labor force.....	994	1,046	1,086	-	-	-	-	-	-
Participation rate.....	27.2	28.6	29.8	-	-	-	-	-	-
Employed.....	746	767	798	-	-	-	-	-	-
Employment-population ratio.....	20.4	21.0	21.9	-	-	-	-	-	-
Unemployed.....	248	278	288	-	-	-	-	-	-
Unemployment rate.....	24.9	26.6	26.5	-	-	-	-	-	-

1 The population figures are not adjusted for seasonal variation; therefore, identical numbers appear in the unadjusted and seasonally adjusted columns.

- Data not available.

NOTE: Persons whose ethnicity is identified as Hispanic or Latino may be of any race. Updated population controls are introduced annually with the release of January data.

**HOUSEHOLD DATA**

**Table A-4. Employment status of the civilian population 25 years and over by educational attainment**

[Numbers in thousands]

Educational attainment	Not seasonally adjusted			Seasonally adjusted					
	Jan. 2012	Dec. 2012	Jan. 2013	Jan. 2012	Sept. 2012	Oct. 2012	Nov. 2012	Dec. 2012	Jan. 2013
<b>Less than a high school diploma</b>									
Civilian labor force.....	11,374	11,156	11,035	11,403	11,183	11,251	11,097	11,120	11,125
Participation rate.....	45.3	45.2	45.1	45.4	45.0	45.8	45.3	45.1	45.5
Employed.....	9,669	9,785	9,502	9,912	9,930	9,880	9,753	9,821	9,784
Employment-population ratio.....	38.5	39.7	38.8	39.4	40.0	40.2	39.8	39.8	40.0
Unemployed.....	1,705	1,371	1,533	1,491	1,253	1,371	1,344	1,298	1,341
Unemployment rate.....	15.0	12.3	13.9	13.1	11.2	12.2	12.1	11.7	12.0
<b>High school graduates, no college<sup>1</sup></b>									
Civilian labor force.....	37,002	36,892	36,709	36,839	36,642	36,735	36,652	36,663	36,557
Participation rate.....	59.8	59.4	59.0	59.6	59.6	60.0	59.4	59.1	58.7
Employed.....	33,494	33,921	33,371	33,723	33,504	33,681	33,677	33,713	33,585
Employment-population ratio.....	54.2	54.6	53.6	54.5	54.5	55.0	54.6	54.3	54.0
Unemployed.....	3,508	2,971	3,338	3,116	3,138	3,054	2,975	2,950	2,972
Unemployment rate.....	9.5	8.1	9.1	8.5	8.6	8.3	8.1	8.0	8.1
<b>Some college or associate degree</b>									
Civilian labor force.....	37,240	37,341	37,225	37,203	37,512	37,662	37,274	37,397	37,201
Participation rate.....	69.3	68.6	68.4	69.2	68.6	68.8	68.4	68.7	68.3
Employed.....	34,435	34,857	34,496	34,501	35,076	35,043	34,832	34,831	34,587
Employment-population ratio.....	64.0	64.1	63.4	64.2	64.1	64.0	63.9	64.0	63.5
Unemployed.....	2,804	2,484	2,729	2,702	2,436	2,619	2,442	2,566	2,614
Unemployment rate.....	7.5	6.7	7.3	7.3	6.5	7.0	6.6	6.9	7.0
<b>Bachelor's degree and higher<sup>2</sup></b>									
Civilian labor force.....	47,510	48,758	48,968	47,516	48,508	48,670	48,858	48,859	48,991
Participation rate.....	75.7	75.7	75.7	75.7	75.9	75.3	75.5	75.9	75.8
Employed.....	45,402	46,892	47,061	45,529	46,549	46,851	46,968	46,954	47,172
Employment-population ratio.....	72.3	72.8	72.8	72.5	72.8	72.5	72.6	72.9	72.9
Unemployed.....	2,108	1,866	1,907	1,987	1,959	1,818	1,891	1,905	1,819
Unemployment rate.....	4.4	3.8	3.9	4.2	4.0	3.7	3.9	3.9	3.7

1 Includes persons with a high school diploma or equivalent.

2 Includes persons with bachelor's, master's, professional, and doctoral degrees.

NOTE: Updated population controls are introduced annually with the release of January data.

**HOUSEHOLD DATA**

**Table A-5. Employment status of the civilian population 18 years and over by veteran status, period of service, and sex, not seasonally adjusted**

[Numbers in thousands]

Employment status, veteran status, and period of service	Total		Men		Women	
	Jan. 2012	Jan. 2013	Jan. 2012	Jan. 2013	Jan. 2012	Jan. 2013
<b>VETERANS, 18 years and over</b>						
Civilian noninstitutional population.....	21,347	21,534	19,538	19,320	1,809	2,214
Civilian labor force.....	10,914	11,032	9,784	9,638	1,131	1,394
Participation rate.....	51.1	51.2	50.1	49.9	62.5	63.0
Employed.....	10,100	10,188	9,076	8,918	1,024	1,271
Employment-population ratio.....	47.3	47.3	46.5	46.2	56.6	57.4
Unemployed.....	815	844	708	721	107	123
Unemployment rate.....	7.5	7.6	7.2	7.5	9.4	8.8
Not in labor force.....	10,433	10,502	9,754	9,682	678	820
<b>  Gulf War-era II veterans</b>						
Civilian noninstitutional population.....	2,436	2,659	2,033	2,113	403	546
Civilian labor force.....	1,955	2,153	1,665	1,768	290	385
Participation rate.....	80.2	81.0	81.9	83.7	72.0	70.4
Employed.....	1,777	1,900	1,537	1,582	240	319
Employment-population ratio.....	72.9	71.5	75.6	74.9	59.6	58.4
Unemployed.....	178	252	128	186	50	66
Unemployment rate.....	9.1	11.7	7.7	10.5	17.3	17.1
Not in labor force.....	481	506	369	345	113	161
<b>  Gulf War-era I veterans</b>						
Civilian noninstitutional population.....	3,048	3,195	2,540	2,609	509	586
Civilian labor force.....	2,550	2,664	2,158	2,222	391	443
Participation rate.....	83.6	83.4	85.0	85.1	76.9	75.5
Employed.....	2,386	2,513	2,031	2,096	355	417
Employment-population ratio.....	78.3	78.6	80.0	80.3	69.8	71.2
Unemployed.....	164	152	128	126	36	26
Unemployment rate.....	6.4	5.7	5.9	5.7	9.2	5.8
Not in labor force.....	498	531	381	388	117	143
<b>  World War II, Korean War, and Vietnam-era veterans</b>						
Civilian noninstitutional population.....	10,079	10,039	9,759	9,662	319	377
Civilian labor force.....	3,156	3,076	3,053	2,956	103	120
Participation rate.....	31.3	30.6	31.3	30.6	32.3	31.9
Employed.....	2,928	2,834	2,828	2,722	100	111
Employment-population ratio.....	29.0	28.2	29.0	28.2	31.2	29.6
Unemployed.....	229	242	225	233	4	9
Unemployment rate.....	7.2	7.9	7.4	7.9	3.4	7.4
Not in labor force.....	6,922	6,963	6,706	6,706	216	257
<b>  Veterans of other service periods</b>						
Civilian noninstitutional population.....	5,784	5,641	5,206	4,936	578	705
Civilian labor force.....	3,253	3,139	2,907	2,693	346	446
Participation rate.....	56.2	55.7	55.9	54.6	59.8	63.3
Employed.....	3,009	2,942	2,680	2,518	329	424
Employment-population ratio.....	52.0	52.1	51.5	51.0	56.9	60.1
Unemployed.....	244	198	227	175	17	23
Unemployment rate.....	7.5	6.3	7.8	6.5	4.8	5.1
Not in labor force.....	2,531	2,502	2,298	2,243	233	259
<b>NONVETERANS, 18 years and over</b>						
Civilian noninstitutional population.....	212,092	214,154	92,726	94,148	119,365	120,006
Civilian labor force.....	140,958	141,994	70,742	71,776	70,217	70,218
Participation rate.....	66.5	66.3	76.3	76.2	58.8	58.5
Employed.....	128,685	130,156	64,173	65,340	64,512	64,817
Employment-population ratio.....	60.7	60.8	69.2	69.4	54.0	54.0
Unemployed.....	12,274	11,837	6,569	6,436	5,705	5,401
Unemployment rate.....	8.7	8.3	9.3	9.0	8.1	7.7
Not in labor force.....	71,133	72,160	21,985	22,372	49,149	49,788

NOTE: Veterans served on active duty in the U.S. Armed Forces and were not on active duty at the time of the survey. Nonveterans never served on active duty in the U.S. Armed Forces. Veterans could have served anywhere in the world during these periods of service: Gulf War era II (September 2001-present), Gulf War era I (August 1990-August 2001), Vietnam era (August 1964-April 1975), Korean War (July 1950-January 1955), World War II (December 1941-December 1946), and other service periods (all other time periods). Veterans who served in more than one wartime period are classified only in the most recent one. Veterans who served during one of the selected wartime periods and another period are classified only in the wartime period. Beginning with data for January 2013, estimates for veterans incorporate population controls derived from the updated Department of Veterans Affairs' population model.

**HOUSEHOLD DATA**

**Table A-6. Employment status of the civilian population by sex, age, and disability status, not seasonally adjusted**

[Numbers in thousands]

Employment status, sex, and age	Persons with a disability		Persons with no disability	
	Jan. 2012	Jan. 2013	Jan. 2012	Jan. 2013
<b>TOTAL, 16 years and over</b>				
Civilian noninstitutional population.....	27,482	28,573	214,788	216,090
Civilian labor force.....	5,502	5,950	147,983	148,844
Participation rate.....	20.0	20.8	68.9	68.9
Employed.....	4,792	5,134	135,152	136,480
Employment-population ratio.....	17.4	18.0	62.9	63.2
Unemployed.....	710	816	12,831	12,364
Unemployment rate.....	12.9	13.7	8.7	8.3
Not in labor force.....	21,979	22,623	66,805	67,245
<b>Men, 16 to 64 years</b>				
Civilian labor force.....	2,479	2,760	74,694	75,040
Participation rate.....	33.7	34.9	81.7	82.2
Employed.....	2,103	2,322	67,803	68,374
Employment-population ratio.....	28.6	29.4	74.2	74.9
Unemployed.....	376	438	6,891	6,665
Unemployment rate.....	15.2	15.9	9.2	8.9
Not in labor force.....	4,875	5,148	16,729	16,226
<b>Women, 16 to 64 years</b>				
Civilian labor force.....	2,189	2,147	66,727	66,883
Participation rate.....	28.6	28.4	70.4	70.3
Employed.....	1,903	1,851	61,198	61,643
Employment-population ratio.....	24.9	24.5	64.6	64.8
Unemployed.....	285	296	5,529	5,240
Unemployment rate.....	13.0	13.8	8.3	7.8
Not in labor force.....	5,468	5,421	28,023	28,314
<b>Both sexes, 65 years and over</b>				
Civilian labor force.....	834	1,044	6,562	6,921
Participation rate.....	6.7	8.0	22.9	23.4
Employed.....	785	961	6,151	6,463
Employment-population ratio.....	6.3	7.3	21.5	21.8
Unemployed.....	49	82	411	459
Unemployment rate.....	5.8	7.9	6.3	6.6
Not in labor force.....	11,636	12,054	22,052	22,705

NOTE: A person with a disability has at least one of the following conditions: is deaf or has serious difficulty hearing; is blind or has serious difficulty seeing even when wearing glasses; has serious difficulty concentrating, remembering, or making decisions because of a physical, mental, or emotional condition; has serious difficulty walking or climbing stairs; has difficulty dressing or bathing; or has difficulty doing errands alone such as visiting a doctor's office or shopping because of a physical, mental, or emotional condition. Updated population controls are introduced annually with the release of January data.

**HOUSEHOLD DATA**

**Table A-7. Employment status of the civilian population by nativity and sex, not seasonally adjusted**

[Numbers in thousands]

Employment status and nativity	Total		Men		Women	
	Jan. 2012	Jan. 2013	Jan. 2012	Jan. 2013	Jan. 2012	Jan. 2013
<b>Foreign born, 16 years and over</b>						
Civilian noninstitutional population.....	37,593	37,952	18,289	18,492	19,305	19,461
Civilian labor force.....	25,156	25,240	14,418	14,447	10,738	10,792
Participation rate.....	66.9	66.5	78.8	78.1	55.6	55.5
Employed.....	22,803	23,089	13,069	13,287	9,734	9,802
Employment-population ratio.....	60.7	60.8	71.5	71.9	50.4	50.4
Unemployed.....	2,353	2,150	1,350	1,160	1,003	990
Unemployment rate.....	9.4	8.5	9.4	8.0	9.3	9.2
Not in labor force.....	12,437	12,712	3,871	4,044	8,567	8,668
<b>Native born, 16 years and over</b>						
Civilian noninstitutional population.....	204,676	206,711	98,519	99,541	106,157	107,170
Civilian labor force.....	128,329	129,555	66,880	67,802	61,450	61,753
Participation rate.....	62.7	62.7	67.9	68.1	57.9	57.6
Employed.....	117,141	118,524	60,703	61,536	56,438	56,988
Employment-population ratio.....	57.2	57.3	61.6	61.8	53.2	53.2
Unemployed.....	11,188	11,030	6,176	6,266	5,012	4,764
Unemployment rate.....	8.7	8.5	9.2	9.2	8.2	7.7
Not in labor force.....	76,347	77,156	31,640	31,739	44,707	45,417

NOTE: The foreign born are those residing in the United States who were not U.S. citizens at birth. That is, they were born outside the United States or one of its outlying areas such as Puerto Rico or Guam, to parents neither of whom was a U.S. citizen. The native born are persons who were born in the United States or one of its outlying areas such as Puerto Rico or Guam or who were born abroad of at least one parent who was a U.S. citizen. Updated population controls are introduced annually with the release of January data.

**HOUSEHOLD DATA**

**Table A-8. Employed persons by class of worker and part-time status**

[In thousands]

Category	Not seasonally adjusted			Seasonally adjusted					
	Jan. 2012	Dec. 2012	Jan. 2013	Jan. 2012	Sept. 2012	Oct. 2012	Nov. 2012	Dec. 2012	Jan. 2013
<b>CLASS OF WORKER</b>									
Agriculture and related industries.....	2,042	1,922	1,895	2,205	2,198	2,195	2,121	2,088	2,057
Wage and salary workers <sup>1</sup> .....	1,259	1,205	1,123	1,382	1,402	1,394	1,320	1,295	1,245
Self-employed workers, unincorporated.....	765	683	736	809	759	751	776	747	775
Unpaid family workers.....	18	33	36	-	-	-	-	-	-
Nonagricultural industries.....	137,902	141,138	139,718	139,446	140,767	141,245	141,149	141,190	141,255
Wage and salary workers <sup>1</sup> .....	129,299	132,234	131,177	130,589	131,743	132,326	132,038	132,113	132,445
Government.....	20,519	20,839	20,759	20,506	20,647	20,555	20,598	20,686	20,696
Private industries.....	108,780	111,395	110,418	110,093	111,080	111,784	111,429	111,406	111,746
Private households.....	569	732	799	-	-	-	-	-	-
Other industries.....	108,211	110,663	109,619	109,449	110,289	111,058	110,659	110,632	110,873
Self-employed workers, unincorporated.....	8,491	8,819	8,463	8,756	8,863	8,819	8,959	8,935	8,746
Unpaid family workers.....	112	85	78	-	-	-	-	-	-
<b>PERSONS AT WORK PART TIME<sup>2</sup></b>									
<b>All industries</b>									
Part time for economic reasons <sup>3</sup> .....	8,918	8,166	8,628	8,220	8,607	8,286	8,138	7,918	7,973
Slack work or business conditions.....	6,025	5,154	5,732	5,413	5,567	5,177	5,084	4,928	5,126
Could only find part-time work.....	2,479	2,593	2,540	2,558	2,587	2,618	2,648	2,616	2,630
Part time for noneconomic reasons <sup>4</sup> .....	18,958	19,308	18,596	18,700	18,728	18,896	18,594	18,763	18,464
<b>Nonagricultural industries</b>									
Part time for economic reasons <sup>3</sup> .....	8,747	8,038	8,506	8,072	8,552	8,162	8,029	7,812	7,867
Slack work or business conditions.....	5,922	5,087	5,649	5,312	5,468	5,105	5,025	4,887	5,047
Could only find part-time work.....	2,464	2,568	2,530	2,556	2,604	2,631	2,650	2,583	2,610
Part time for noneconomic reasons <sup>4</sup> .....	18,596	18,993	18,259	18,330	18,399	18,527	18,310	18,469	18,182

1 Includes self-employed workers whose businesses are incorporated.

2 Refers to those who worked 1 to 34 hours during the survey reference week and excludes employed persons who were absent from their jobs for the entire week.

3 Refers to those who worked 1 to 34 hours during the reference week for an economic reason such as slack work or unfavorable business conditions, inability to find full-time work, or seasonal declines in demand.

4 Refers to persons who usually work part time for noneconomic reasons such as childcare problems, family or personal obligations, school or training, retirement or Social Security limits on earnings, and other reasons. This excludes persons who usually work full time but worked only 1 to 34 hours during the reference week for reasons such as vacations, holidays, illness, and bad weather.

- Data not available.

NOTE: Detail for the seasonally adjusted data shown in this table will not necessarily add to totals because of the independent seasonal adjustment of the various series. Updated population controls are introduced annually with the release of January data.

# HOUSEHOLD DATA

## Table A-9. Selected employment indicators

[Numbers in thousands]

Characteristic	Not seasonally adjusted			Seasonally adjusted					
	Jan. 2012	Dec. 2012	Jan. 2013	Jan. 2012	Sept. 2012	Oct. 2012	Nov. 2012	Dec. 2012	Jan. 2013
<b>AGE AND SEX</b>									
Total, 16 years and over.....	139,944	143,060	141,614	141,608	142,974	143,328	143,277	143,305	143,322
16 to 19 years.....	3,990	4,192	4,120	4,391	4,429	4,469	4,468	4,402	4,508
16 to 17 years.....	1,160	1,342	1,269	1,336	1,428	1,448	1,351	1,405	1,453
18 to 19 years.....	2,830	2,849	2,850	3,049	2,986	3,032	3,126	2,985	3,048
20 years and over.....	135,954	138,868	137,494	137,218	138,545	138,858	138,809	138,903	138,814
20 to 24 years.....	12,953	13,412	13,064	13,339	13,503	13,549	13,595	13,570	13,471
25 years and over.....	123,000	125,456	124,430	123,859	125,027	125,285	125,200	125,406	125,311
25 to 54 years.....	93,271	94,305	93,418	93,989	94,340	94,328	94,079	94,253	94,147
25 to 34 years.....	29,995	31,162	30,775	30,370	30,805	30,918	30,971	31,115	31,137
35 to 44 years.....	30,394	30,523	30,270	30,612	30,658	30,668	30,490	30,524	30,480
45 to 54 years.....	32,883	32,620	32,373	33,007	32,877	32,742	32,618	32,614	32,531
55 years and over.....	29,729	31,151	31,012	29,871	30,688	30,957	31,121	31,153	31,164
Men, 16 years and over.....	73,772	75,686	74,823	75,257	75,769	76,027	75,983	76,060	76,290
16 to 19 years.....	1,880	1,971	1,918	2,119	2,157	2,182	2,163	2,111	2,151
16 to 17 years.....	524	632	566	619	651	719	656	690	673
18 to 19 years.....	1,357	1,339	1,352	1,489	1,497	1,467	1,492	1,422	1,472
20 years and over.....	71,892	73,716	72,905	73,138	73,612	73,845	73,821	73,949	74,139
20 to 24 years.....	6,685	6,969	6,779	6,973	6,989	7,096	7,125	7,104	7,070
25 years and over.....	65,207	66,747	66,126	66,110	66,636	66,790	66,720	66,902	67,002
25 to 54 years.....	49,592	50,286	49,778	50,325	50,352	50,342	50,194	50,370	50,474
25 to 34 years.....	16,120	16,801	16,589	16,440	16,608	16,715	16,734	16,799	16,889
35 to 44 years.....	16,357	16,437	16,345	16,557	16,552	16,527	16,380	16,443	16,519
45 to 54 years.....	17,116	17,048	16,844	17,327	17,193	17,100	17,080	17,127	17,066
55 years and over.....	15,615	16,460	16,348	15,785	16,284	16,447	16,526	16,532	16,528
Women, 16 years and over.....	66,172	67,373	66,790	66,351	67,206	67,301	67,294	67,245	67,032
16 to 19 years.....	2,110	2,221	2,201	2,272	2,272	2,287	2,305	2,291	2,357
16 to 17 years.....	636	710	703	717	777	729	695	715	780
18 to 19 years.....	1,474	1,511	1,498	1,560	1,490	1,565	1,634	1,563	1,576
20 years and over.....	64,062	65,152	64,589	64,080	64,934	65,014	64,988	64,954	64,675
20 to 24 years.....	6,268	6,443	6,284	6,365	6,514	6,453	6,470	6,467	6,402
25 years and over.....	57,794	58,709	58,305	57,749	58,391	58,496	58,480	58,504	58,309
25 to 54 years.....	43,679	44,019	43,640	43,664	43,987	43,986	43,885	43,883	43,674
25 to 34 years.....	13,875	14,361	14,186	13,929	14,197	14,203	14,237	14,315	14,248
35 to 44 years.....	14,037	14,086	13,925	14,055	14,106	14,141	14,109	14,080	13,961
45 to 54 years.....	15,767	15,572	15,529	15,680	15,684	15,643	15,538	15,487	15,465
55 years and over.....	14,115	14,690	14,664	14,085	14,404	14,510	14,595	14,621	14,636
<b>MARITAL STATUS</b>									
Married men, spouse present.....	43,191	44,014	43,660	43,662	43,980	44,134	44,016	43,924	44,117
Married women, spouse present.....	34,672	34,942	34,488	34,422	34,804	34,561	34,576	34,611	34,271
Women who maintain families.....	9,075	9,125	9,092	-	-	-	-	-	-
<b>FULL- OR PART-TIME STATUS</b>									
Full-time workers <sup>1</sup> .....	111,879	115,079	113,868	113,833	115,259	115,469	115,665	115,868	115,918
Part-time workers <sup>2</sup> .....	28,065	27,980	27,746	27,753	27,692	27,869	27,517	27,502	27,467
<b>MULTIPLE JOBHOLDERS</b>									
Total multiple jobholders.....	6,830	7,081	6,738	7,011	6,882	6,927	7,109	7,017	6,919
Percent of total employed.....	4.9	4.9	4.8	5.0	4.8	4.8	5.0	4.9	4.8
<b>SELF-EMPLOYMENT</b>									
Self-employed workers, incorporated.....	5,191	5,175	5,244	-	-	-	-	-	-
Self-employed workers, unincorporated.....	9,256	9,502	9,200	9,565	9,622	9,570	9,735	9,682	9,521

1 Employed full-time workers are persons who usually work 35 hours or more per week.

2 Employed part-time workers are persons who usually work less than 35 hours per week.

- Data not available.

NOTE: Detail for the seasonally adjusted data shown in this table will not necessarily add to totals because of the independent seasonal adjustment of the various series. Updated population controls are introduced annually with the release of January data.

# HOUSEHOLD DATA

## Table A-10. Selected unemployment indicators, seasonally adjusted

Characteristic	Number of unemployed persons (in thousands)			Unemployment rates					
	Jan. 2012	Dec. 2012	Jan. 2013	Jan. 2012	Sept. 2012	Oct. 2012	Nov. 2012	Dec. 2012	Jan. 2013
<b>AGE AND SEX</b>									
Total, 16 years and over.....	12,748	12,206	12,332	8.3	7.8	7.9	7.8	7.8	7.9
16 to 19 years.....	1,342	1,355	1,381	23.4	23.7	23.7	23.6	23.5	23.4
16 to 17 years.....	549	490	576	29.1	25.5	25.3	28.4	25.8	28.4
18 to 19 years.....	798	872	801	20.7	22.7	22.7	20.4	22.6	20.8
20 years and over.....	11,406	10,852	10,951	7.7	7.2	7.3	7.1	7.2	7.3
20 to 24 years.....	2,038	2,151	2,238	13.3	12.4	13.2	12.6	13.7	14.2
25 years and over.....	9,330	8,725	8,762	7.0	6.6	6.6	6.5	6.5	6.5
25 to 54 years.....	7,459	6,777	6,783	7.4	6.8	6.8	6.7	6.7	6.7
25 to 34 years.....	2,959	2,611	2,594	8.9	8.1	8.2	7.9	7.7	7.7
35 to 44 years.....	2,251	2,158	2,116	6.8	6.3	6.3	6.2	6.6	6.5
45 to 54 years.....	2,249	2,008	2,073	6.4	6.0	6.1	6.0	5.8	6.0
55 years and over.....	1,857	1,957	1,972	5.9	5.9	5.8	5.8	5.9	6.0
Men, 16 years and over.....	6,794	6,486	6,650	8.3	8.0	8.0	7.9	7.9	8.0
16 to 19 years.....	730	739	772	25.6	27.1	26.8	26.6	25.9	26.4
16 to 17 years.....	299	231	306	32.6	30.0	28.3	31.4	25.1	31.3
18 to 19 years.....	430	508	456	22.4	25.7	26.4	23.8	26.3	23.7
20 years and over.....	6,065	5,746	5,877	7.7	7.3	7.3	7.2	7.2	7.3
20 to 24 years.....	1,163	1,108	1,276	14.3	13.7	13.8	12.6	13.5	15.3
25 years and over.....	4,886	4,620	4,668	6.9	6.6	6.6	6.6	6.5	6.5
25 to 54 years.....	3,883	3,525	3,575	7.2	6.7	6.8	6.7	6.5	6.6
25 to 34 years.....	1,602	1,411	1,411	8.9	8.0	8.1	7.9	7.7	7.7
35 to 44 years.....	1,129	1,087	1,084	6.4	6.1	6.0	6.1	6.2	6.2
45 to 54 years.....	1,152	1,027	1,079	6.2	6.1	6.3	6.1	5.7	5.9
55 years and over.....	1,003	1,095	1,093	6.0	6.4	6.1	6.2	6.2	6.2
Women, 16 years and over.....	5,953	5,721	5,682	8.2	7.5	7.7	7.6	7.8	7.8
16 to 19 years.....	612	615	608	21.2	20.2	20.4	20.5	21.2	20.5
16 to 17 years.....	250	259	269	25.8	21.4	22.0	25.3	26.6	25.7
18 to 19 years.....	368	364	344	19.1	19.5	18.8	17.0	18.9	17.9
20 years and over.....	5,341	5,105	5,074	7.7	7.0	7.2	7.0	7.3	7.3
20 to 24 years.....	875	1,042	962	12.1	10.9	12.5	12.6	13.9	13.1
25 years and over.....	4,443	4,105	4,094	7.1	6.5	6.6	6.3	6.6	6.6
25 to 54 years.....	3,576	3,252	3,208	7.6	6.8	6.9	6.7	6.9	6.8
25 to 34 years.....	1,358	1,200	1,183	8.9	8.2	8.3	7.9	7.7	7.7
35 to 44 years.....	1,122	1,071	1,031	7.4	6.4	6.6	6.4	7.1	6.9
45 to 54 years.....	1,097	981	994	6.5	6.0	5.9	5.9	6.0	6.0
55 years and over <sup>1</sup> .....	890	794	915	5.9	5.6	5.5	5.0	5.1	5.9
<b>MARITAL STATUS</b>									
Married men, spouse present.....	2,350	2,173	2,120	5.1	4.7	4.6	4.7	4.7	4.6
Married women, spouse present.....	2,017	1,916	1,890	5.5	5.0	5.1	5.1	5.2	5.2
Women who maintain families <sup>1</sup> .....	1,236	1,166	1,156	12.0	11.3	11.5	10.7	11.3	11.3
<b>FULL- OR PART-TIME STATUS</b>									
Full-time workers <sup>2</sup> .....	11,009	10,422	10,555	8.8	8.3	8.3	8.1	8.3	8.3
Part-time workers <sup>3</sup> .....	1,742	1,819	1,802	5.9	5.7	6.2	6.2	6.2	6.2

1 Not seasonally adjusted.

2 Full-time workers are unemployed persons who have expressed a desire to work full time (35 hours or more per week) or are on layoff from full-time jobs.

3 Part-time workers are unemployed persons who have expressed a desire to work part time (less than 35 hours per week) or are on layoff from part-time jobs.

NOTE: Detail for the seasonally adjusted data shown in this table will not necessarily add to totals because of the independent seasonal adjustment of the various series. Updated population controls are introduced annually with the release of January data.



**HOUSEHOLD DATA**

**Table A-11. Unemployed persons by reason for unemployment**

[Numbers in thousands]

Reason	Not seasonally adjusted			Seasonally adjusted					
	Jan. 2012	Dec. 2012	Jan. 2013	Jan. 2012	Sept. 2012	Oct. 2012	Nov. 2012	Dec. 2012	Jan. 2013
<b>NUMBER OF UNEMPLOYED</b>									
Job losers and persons who completed temporary jobs.....	8,234	6,592	7,575	7,292	6,489	6,536	6,429	6,408	6,637
On temporary layoff.....	1,892	1,244	1,772	1,266	1,153	1,077	1,080	1,085	1,155
Not on temporary layoff.....	6,342	5,348	5,803	6,026	5,335	5,460	5,349	5,323	5,483
Permanent job losers.....	4,948	4,070	4,334	4,809	4,279	4,261	4,151	4,075	4,208
Persons who completed temporary jobs.....	1,395	1,278	1,469	1,217	1,056	1,199	1,198	1,248	1,275
Job leavers.....	957	933	1,014	932	962	1,009	926	983	981
Reentrants.....	3,276	3,228	3,497	3,301	3,313	3,319	3,325	3,587	3,515
New entrants.....	1,074	1,092	1,095	1,258	1,253	1,302	1,326	1,291	1,287
<b>PERCENT DISTRIBUTION</b>									
Job losers and persons who completed temporary jobs.....	60.8	55.7	57.5	57.0	54.0	53.7	53.5	52.2	53.4
On temporary layoff.....	14.0	10.5	13.4	9.9	9.6	8.8	9.0	8.8	9.3
Not on temporary layoff.....	46.8	45.2	44.0	47.1	44.4	44.9	44.6	43.4	44.1
Job leavers.....	7.1	7.9	7.7	7.3	8.0	8.3	7.7	8.0	7.9
Reentrants.....	24.2	27.3	26.5	25.8	27.6	27.3	27.7	29.2	28.3
New entrants.....	7.9	9.2	8.3	9.8	10.4	10.7	11.0	10.5	10.4
<b>UNEMPLOYED AS A PERCENT OF THE CIVILIAN LABOR FORCE</b>									
Job losers and persons who completed temporary jobs.....	5.4	4.3	4.9	4.7	4.2	4.2	4.1	4.1	4.3
Job leavers.....	0.6	0.6	0.7	0.6	0.6	0.6	0.6	0.6	0.6
Reentrants.....	2.1	2.1	2.3	2.1	2.1	2.1	2.1	2.3	2.3
New entrants.....	0.7	0.7	0.7	0.8	0.8	0.8	0.9	0.8	0.8

NOTE: Updated population controls are introduced annually with the release of January data.

**HOUSEHOLD DATA**

**Table A-12. Unemployed persons by duration of unemployment**

[Numbers in thousands]

Duration	Not seasonally adjusted			Seasonally adjusted					
	Jan. 2012	Dec. 2012	Jan. 2013	Jan. 2012	Sept. 2012	Oct. 2012	Nov. 2012	Dec. 2012	Jan. 2013
<b>NUMBER OF UNEMPLOYED</b>									
Less than 5 weeks.....	2,923	2,678	3,246	2,495	2,535	2,633	2,596	2,676	2,766
5 to 14 weeks.....	3,106	2,732	3,316	2,874	2,825	2,847	2,757	2,838	3,028
15 weeks and over.....	7,512	6,435	6,618	7,466	6,736	6,829	6,604	6,661	6,566
15 to 26 weeks.....	1,915	1,817	1,854	1,944	1,866	1,813	1,820	1,895	1,858
27 weeks and over.....	5,597	4,618	4,764	5,522	4,871	5,017	4,784	4,766	4,708
Average (mean) duration, in weeks.....	38.2	37.0	33.6	40.2	39.6	39.9	39.7	38.1	35.3
Median duration, in weeks.....	19.2	18.1	14.7	20.8	18.7	19.6	18.9	18.0	16.0
<b>PERCENT DISTRIBUTION</b>									
Less than 5 weeks.....	21.6	22.6	24.6	19.4	21.0	21.4	21.7	22.0	22.4
5 to 14 weeks.....	22.9	23.1	25.2	22.4	23.4	23.1	23.1	23.3	24.5
15 weeks and over.....	55.5	54.3	50.2	58.2	55.7	55.5	55.2	54.7	53.1
15 to 26 weeks.....	14.1	15.3	14.1	15.1	15.4	14.7	15.2	15.6	15.0
27 weeks and over.....	41.3	39.0	36.1	43.0	40.3	40.8	40.0	39.1	38.1

NOTE: Updated population controls are introduced annually with the release of January data.

**HOUSEHOLD DATA**

**Table A-13. Employed and unemployed persons by occupation, not seasonally adjusted**

[Numbers in thousands]

Occupation	Employed		Unemployed		Unemployment rates	
	Jan. 2012	Jan. 2013	Jan. 2012	Jan. 2013	Jan. 2012	Jan. 2013
Total, 16 years and over <sup>1</sup> .....	139,944	141,614	13,541	13,181	8.8	8.5
Management, professional, and related occupations.....	53,152	54,214	2,410	2,211	4.3	3.9
Management, business, and financial operations occupations.....	22,255	22,580	1,044	950	4.5	4.0
Professional and related occupations.....	30,897	31,634	1,366	1,261	4.2	3.8
Service occupations.....	24,334	25,038	2,876	2,778	10.6	10.0
Sales and office occupations.....	33,305	33,181	2,972	3,070	8.2	8.5
Sales and related occupations.....	15,585	15,254	1,398	1,423	8.2	8.5
Office and administrative support occupations.....	17,721	17,927	1,574	1,647	8.2	8.4
Natural resources, construction, and maintenance occupations.....	12,561	12,472	2,152	1,916	14.6	13.3
Farming, fishing, and forestry occupations.....	845	792	243	180	22.3	18.5
Construction and extraction occupations.....	6,887	6,861	1,557	1,387	18.4	16.8
Installation, maintenance, and repair occupations.....	4,828	4,819	353	349	6.8	6.8
Production, transportation, and material moving occupations.....	16,592	16,708	2,016	2,083	10.8	11.1
Production occupations.....	8,274	8,251	959	962	10.4	10.4
Transportation and material moving occupations.....	8,318	8,457	1,057	1,121	11.3	11.7

<sup>1</sup> Persons with no previous work experience and persons whose last job was in the U.S. Armed Forces are included in the unemployed total.

NOTE: Updated population controls are introduced annually with the release of January data.

**HOUSEHOLD DATA**

**Table A-14. Unemployed persons by industry and class of worker, not seasonally adjusted**

Industry and class of worker	Number of unemployed persons (in thousands)		Unemployment rates	
	Jan. 2012	Jan. 2013	Jan. 2012	Jan. 2013
Total, 16 years and over <sup>1</sup> .....	13,541	13,181	8.8	8.5
Nonagricultural private wage and salary workers.....	10,736	10,435	9.0	8.6
Mining, quarrying, and oil and gas extraction.....	78	97	9.4	9.6
Construction.....	1,479	1,322	17.7	16.1
Manufacturing.....	1,283	1,206	8.4	7.9
Durable goods.....	796	683	8.3	7.1
Nondurable goods.....	487	523	8.6	9.1
Wholesale and retail trade.....	1,906	1,679	9.3	8.2
Transportation and utilities.....	400	474	7.0	7.7
Information.....	227	236	7.9	8.2
Financial activities.....	462	507	4.9	5.5
Professional and business services.....	1,441	1,575	9.5	10.4
Education and health services.....	1,214	1,205	5.5	5.4
Leisure and hospitality.....	1,647	1,612	12.6	12.0
Other services.....	601	521	9.3	7.9
Agriculture and related private wage and salary workers.....	259	166	17.6	13.1
Government workers.....	890	912	4.2	4.2
Self-employed workers, unincorporated, and unpaid family workers.....	582	573	5.8	5.8

<sup>1</sup> Persons with no previous work experience and persons whose last job was in the U.S. Armed Forces are included in the unemployed total.

NOTE: Updated population controls are introduced annually with the release of January data.

**HOUSEHOLD DATA**

**Table A-15. Alternative measures of labor underutilization**

[Percent]

Measure	Not seasonally adjusted			Seasonally adjusted					
	Jan. 2012	Dec. 2012	Jan. 2013	Jan. 2012	Sept. 2012	Oct. 2012	Nov. 2012	Dec. 2012	Jan. 2013
U-1 Persons unemployed 15 weeks or longer, as a percent of the civilian labor force.....	4.9	4.2	4.3	4.8	4.3	4.4	4.3	4.3	4.2
U-2 Job losers and persons who completed temporary jobs, as a percent of the civilian labor force.....	5.4	4.3	4.9	4.7	4.2	4.2	4.1	4.1	4.3
U-3 Total unemployed, as a percent of the civilian labor force (official unemployment rate).....	8.8	7.6	8.5	8.3	7.8	7.9	7.8	7.8	7.9
U-4 Total unemployed plus discouraged workers, as a percent of the civilian labor force plus discouraged workers.....	9.4	8.3	9.0	8.9	8.3	8.4	8.3	8.5	8.4
U-5 Total unemployed, plus discouraged workers, plus all other persons marginally attached to the labor force, as a percent of the civilian labor force plus all persons marginally attached to the labor force.....	10.5	9.2	9.9	9.9	9.3	9.3	9.2	9.4	9.3
U-6 Total unemployed, plus all persons marginally attached to the labor force, plus total employed part time for economic reasons, as a percent of the civilian labor force plus all persons marginally attached to the labor force.....	16.2	14.4	15.4	15.1	14.7	14.5	14.4	14.4	14.4

NOTE: Persons marginally attached to the labor force are those who currently are neither working nor looking for work but indicate that they want and are available for a job and have looked for work sometime in the past 12 months. Discouraged workers, a subset of the marginally attached, have given a job-market related reason for not currently looking for work. Persons employed part time for economic reasons are those who want and are available for full-time work but have had to settle for a part-time schedule. Updated population controls are introduced annually with the release of January data.

**HOUSEHOLD DATA**

**Table A-16. Persons not in the labor force and multiple jobholders by sex, not seasonally adjusted**

[Numbers in thousands]

Category	Total		Men		Women	
	Jan. 2012	Jan. 2013	Jan. 2012	Jan. 2013	Jan. 2012	Jan. 2013
<b>NOT IN THE LABOR FORCE</b>						
Total not in the labor force.....	88,784	89,868	35,510	35,783	53,274	54,085
Persons who currently want a job.....	6,495	6,781	3,073	3,221	3,422	3,559
Marginally attached to the labor force <sup>1</sup> .....	2,809	2,443	1,452	1,323	1,356	1,120
Discouraged workers <sup>2</sup> .....	1,059	804	638	516	421	288
Other persons marginally attached to the labor force <sup>3</sup> .....	1,749	1,639	814	806	936	832
<b>MULTIPLE JOBHOLDERS</b>						
Total multiple jobholders <sup>4</sup> .....	6,830	6,738	3,372	3,285	3,459	3,453
Percent of total employed.....	4.9	4.8	4.6	4.4	5.2	5.2
Primary job full time, secondary job part time.....	3,441	3,524	1,985	1,924	1,456	1,600
Primary and secondary jobs both part time.....	1,878	1,786	603	544	1,275	1,242
Primary and secondary jobs both full time.....	259	211	124	111	135	100
Hours vary on primary or secondary job.....	1,216	1,171	650	680	566	491

1 Data refer to persons who want a job, have searched for work during the prior 12 months, and were available to take a job during the reference week, but had not looked for work in the past 4 weeks.

2 Includes those who did not actively look for work in the prior 4 weeks for reasons such as thinks no work available, could not find work, lacks schooling or training, employer thinks too young or old, and other types of discrimination.

3 Includes those who did not actively look for work in the prior 4 weeks for such reasons as school or family responsibilities, ill health, and transportation problems, as well as a number for whom reason for nonparticipation was not determined.

4 Includes a small number of persons who work part time on their primary job and full time on their secondary job(s), not shown separately.

NOTE: Updated population controls are introduced annually with the release of January data.

**ESTABLISHMENT DATA**

**Table B-1. Employees on nonfarm payrolls by industry sector and selected industry detail**

[In thousands]

Industry	Not seasonally adjusted				Seasonally adjusted				Change from: Dec.2012 - Jan.2013 <sup>P</sup>
	Jan. 2012	Nov. 2012	Dec. 2012 <sup>P</sup>	Jan. 2013 <sup>P</sup>	Jan. 2012	Nov. 2012	Dec. 2012 <sup>P</sup>	Jan. 2013 <sup>P</sup>	
Total nonfarm.....	130,657	135,636	135,545	132,705	132,809	134,472	134,668	134,825	157
Total private.....	108,847	113,284	113,310	110,965	110,871	112,593	112,795	112,961	166
Goods-producing.....	17,796	18,571	18,407	18,036	18,314	18,464	18,508	18,544	36
Mining and logging.....	824	853	854	845	844	853	859	863	4
Logging.....	49.0	51.7	51.6	48.2	50.0	50.7	51.1	49.4	-1.7
Mining.....	775.1	800.8	802.5	797.1	793.6	802.0	808.0	813.9	5.9
Oil and gas extraction.....	180.5	188.8	191.1	192.4	181.9	190.0	192.2	193.7	1.5
Mining, except oil and gas <sup>1</sup> .....	213.3	221.7	218.0	213.4	224.7	221.6	222.4	223.9	1.5
Coal mining.....	89.3	82.5	81.6	81.7	89.7	83.0	82.0	82.0	0.0
Support activities for mining.....	381.3	390.3	393.4	391.3	387.0	390.4	393.4	396.3	2.9
Construction.....	5,237	5,779	5,617	5,345	5,629	5,673	5,703	5,731	28
Construction of buildings.....	1,180.4	1,263.0	1,243.7	1,189.6	1,232.0	1,241.4	1,243.4	1,241.4	-2.0
Residential building.....	545.3	584.2	575.7	547.0	572.6	574.2	574.4	575.1	0.7
Nonresidential building.....	635.1	678.8	668.0	642.6	659.4	667.2	669.0	666.3	-2.7
Heavy and civil engineering construction.....	752.3	908.7	847.7	779.5	860.5	880.2	883.0	887.0	4.0
Specialty trade contractors.....	3,304.3	3,606.9	3,526.0	3,375.5	3,536.5	3,551.4	3,576.5	3,602.7	26.2
Residential specialty trade contractors.....	1,361.7	1,512.5	1,471.9	1,413.5	1,465.0	1,489.8	1,501.9	1,515.7	13.8
Nonresidential specialty trade contractors.....	1,942.6	2,094.4	2,054.1	1,962.0	2,071.5	2,061.6	2,074.6	2,087.0	12.4
Manufacturing.....	11,735	11,939	11,936	11,846	11,841	11,938	11,946	11,950	4
Durable goods.....	7,348	7,479	7,489	7,445	7,400	7,483	7,491	7,494	3
Wood products.....	330.7	342.5	342.1	337.9	337.4	343.5	343.5	344.4	0.9
Nonmetallic mineral products.....	352.7	364.7	359.5	347.9	367.6	362.1	363.7	361.8	-1.9
Primary metals.....	399.0	398.9	397.3	397.1	400.0	399.3	398.5	398.4	-0.1
Fabricated metal products.....	1,378.9	1,423.7	1,422.8	1,417.8	1,387.2	1,423.2	1,424.0	1,425.0	1.0
Machinery.....	1,083.5	1,096.6	1,102.4	1,095.5	1,086.9	1,098.2	1,099.9	1,098.6	-1.3
Computer and electronic products <sup>1</sup> .....	1,096.1	1,083.2	1,088.2	1,084.9	1,098.5	1,085.3	1,086.8	1,087.6	0.8
Computer and peripheral equipment.....	157.3	158.2	158.9	159.3	157.8	158.5	158.5	159.7	1.2
Communications equipment.....	111.3	108.3	108.7	107.6	111.3	108.1	108.2	107.6	-0.6
Semiconductors and electronic components.....	384.5	380.0	383.0	382.6	385.2	381.1	383.1	383.6	0.5
Electronic instruments.....	401.2	395.8	397.0	395.2	402.3	397.2	396.8	396.4	-0.4
Electrical equipment and appliances.....	367.9	368.9	369.4	365.9	368.6	369.9	368.5	366.8	-1.7
Transportation equipment <sup>1</sup> .....	1,420.9	1,473.2	1,477.4	1,473.9	1,425.4	1,472.9	1,474.9	1,477.7	2.8
Motor vehicles and parts <sup>2</sup> .....	746.0	784.5	788.2	786.5	749.0	784.6	786.5	789.0	2.5
Furniture and related products.....	344.4	346.9	347.5	345.3	349.6	349.6	349.8	350.7	0.9
Miscellaneous durable goods manufacturing.....	574.0	580.6	582.0	578.8	578.7	578.7	581.6	583.2	1.6
Nondurable goods.....	4,387	4,460	4,447	4,401	4,441	4,455	4,455	4,456	1
Food manufacturing.....	1,428.5	1,474.2	1,460.9	1,434.4	1,454.6	1,466.8	1,463.4	1,462.6	-0.8
Textile mills.....	118.6	117.3	116.1	115.4	119.4	117.1	116.8	116.5	-0.3
Textile product mills.....	113.6	117.2	117.9	116.7	115.3	117.3	117.8	118.0	0.2
Apparel.....	146.4	147.5	148.1	146.6	149.8	147.8	148.7	149.3	0.6
Paper and paper products.....	381.7	376.7	376.6	374.9	382.0	376.8	376.0	375.4	-0.6
Printing and related support activities.....	463.2	457.7	457.7	453.5	467.1	457.2	456.9	457.1	0.2
Petroleum and coal products.....	108.6	115.1	112.9	112.5	113.2	114.7	115.2	116.7	1.5
Chemicals.....	781.4	782.7	786.9	786.5	783.4	785.7	786.7	788.1	1.4
Plastics and rubber products.....	631.8	648.1	648.9	644.2	637.5	648.9	649.4	650.2	0.8
Miscellaneous nondurable goods manufacturing.....	212.8	223.2	221.0	216.2	218.4	222.7	223.6	222.3	-1.3
Private service-providing.....	91,051	94,713	94,903	92,929	92,557	94,129	94,287	94,417	130
Trade, transportation, and utilities.....	25,169	26,208	26,435	25,626	25,372	25,720	25,781	25,815	34
Wholesale trade.....	5,569.6	5,719.8	5,724.3	5,678.0	5,623.0	5,708.8	5,715.1	5,729.9	14.8
Durable goods.....	2,790.7	2,839.2	2,850.8	2,829.4	2,810.1	2,839.5	2,847.3	2,848.6	1.3
Nondurable goods.....	1,926.8	1,996.7	1,994.6	1,975.7	1,954.6	1,988.9	1,991.5	2,002.4	10.9
Electronic markets and agents and brokers... <sup>1</sup>	852.1	883.9	878.9	872.9	858.3	880.4	876.3	878.9	2.6
Retail trade.....	14,728.9	15,430.3	15,543.1	14,951.1	14,829.0	14,997.9	15,009.1	15,041.7	32.6
Motor vehicle and parts dealers <sup>1</sup> .....	1,691.2	1,745.3	1,736.9	1,725.5	1,721.5	1,748.1	1,749.1	1,755.7	6.6
Automobile dealers.....	1,069.2	1,101.8	1,098.8	1,096.8	1,080.9	1,102.3	1,104.5	1,108.8	4.3
Furniture and home furnishings stores.....	444.3	465.1	471.2	455.5	439.4	445.7	446.9	449.6	2.7

See footnotes at end of table.

**ESTABLISHMENT DATA**

**Table B-1. Employees on nonfarm payrolls by industry sector and selected industry detail**

— Continued

[In thousands]

Industry	Not seasonally adjusted				Seasonally adjusted				Change from: Dec.2012 - Jan.2013 <sup>P</sup>
	Jan. 2012	Nov. 2012	Dec. 2012 <sup>P</sup>	Jan. 2013 <sup>P</sup>	Jan. 2012	Nov. 2012	Dec. 2012 <sup>P</sup>	Jan. 2013 <sup>P</sup>	
<b>Retail trade - Continued</b>									
Electronics and appliance stores.....	521.6	541.3	538.0	525.4	518.2	513.8	514.6	519.7	5.1
Building material and garden supply stores...	1,100.6	1,143.8	1,138.6	1,115.5	1,160.3	1,174.0	1,176.2	1,176.3	0.1
Food and beverage stores.....	2,826.0	2,904.3	2,914.7	2,882.3	2,841.0	2,879.6	2,889.1	2,895.8	6.7
Health and personal care stores.....	990.6	1,030.5	1,036.9	1,022.2	990.8	1,017.3	1,018.1	1,021.4	3.3
Gasoline stations.....	825.2	846.4	844.5	832.2	837.2	844.3	845.6	844.6	-1.0
Clothing and clothing accessories stores.....	1,375.8	1,598.3	1,626.8	1,476.8	1,377.4	1,460.1	1,461.4	1,471.4	10.0
Sporting goods, hobby, book, and music stores.....	569.1	617.2	617.4	582.3	562.2	578.3	576.3	577.3	1.0
General merchandise stores <sup>1</sup> .....	3,172.9	3,243.5	3,314.3	3,101.5	3,156.7	3,090.3	3,084.6	3,083.2	-1.4
Department stores.....	1,605.4	1,587.2	1,640.6	1,499.9	1,577.1	1,479.3	1,473.6	1,471.3	-2.3
Miscellaneous store retailers.....	764.9	823.2	822.3	786.1	780.6	807.8	805.1	803.8	-1.3
Nonstore retailers.....	446.7	471.4	481.5	445.8	443.7	438.6	442.1	442.9	0.8
<b>Transportation and warehousing.....</b>	<b>4,319.5</b>	<b>4,505.7</b>	<b>4,613.4</b>	<b>4,442.6</b>	<b>4,366.5</b>	<b>4,459.0</b>	<b>4,501.5</b>	<b>4,487.3</b>	<b>-14.2</b>
Air transportation.....	457.9	451.2	449.7	442.8	460.3	454.8	450.2	445.3	-4.9
Rail transportation.....	228.9	230.2	230.0	229.2	231.1	230.0	230.7	231.3	0.6
Water transportation.....	60.9	62.6	62.4	60.8	62.3	63.6	62.9	62.4	-0.5
Truck transportation.....	1,299.5	1,376.7	1,368.2	1,347.1	1,327.7	1,366.7	1,370.1	1,375.1	5.0
Transit and ground passenger transportation.....	457.7	474.9	478.5	477.5	446.5	458.0	461.8	464.8	3.0
Pipeline transportation.....	43.7	43.7	44.6	44.5	43.5	44.0	44.4	44.3	-0.1
Scenic and sightseeing transportation.....	19.3	24.2	22.9	18.7	27.1	26.6	27.3	26.6	-0.7
Support activities for transportation.....	568.6	585.0	592.7	588.3	573.3	583.1	589.5	592.0	2.5
Couriers and messengers.....	522.7	550.9	648.8	538.8	527.5	536.8	562.4	543.9	-18.5
Warehousing and storage.....	660.3	706.3	715.6	694.9	667.2	695.4	702.2	701.6	-0.6
<b>Utilities.....</b>	<b>551.1</b>	<b>552.6</b>	<b>553.9</b>	<b>554.1</b>	<b>553.1</b>	<b>554.7</b>	<b>555.0</b>	<b>556.2</b>	<b>1.2</b>
<b>Information.....</b>	<b>2,639</b>	<b>2,693</b>	<b>2,696</b>	<b>2,661</b>	<b>2,670</b>	<b>2,685</b>	<b>2,682</b>	<b>2,691</b>	<b>9</b>
Publishing industries, except Internet.....	737.7	735.5	734.0	727.9	741.0	732.7	730.2	731.6	1.4
Motion picture and sound recording industries.....	333.3	389.1	393.3	364.4	356.6	386.0	388.3	388.0	-0.3
Broadcasting, except Internet.....	283.8	285.5	286.8	284.8	284.8	284.3	285.4	285.6	0.2
Telecommunications.....	869.2	854.9	852.5	856.5	869.2	854.1	850.1	855.0	4.9
Data processing, hosting and related services.....	245.9	250.7	252.8	250.3	248.3	249.9	251.5	252.6	1.1
Other information services.....	168.7	177.7	176.5	177.0	169.7	177.8	176.0	177.9	1.9
<b>Financial activities.....</b>	<b>7,683</b>	<b>7,821</b>	<b>7,847</b>	<b>7,789</b>	<b>7,730</b>	<b>7,822</b>	<b>7,831</b>	<b>7,837</b>	<b>6</b>
Finance and insurance.....	5,784.0	5,871.5	5,891.4	5,865.7	5,794.9	5,865.2	5,873.4	5,876.3	2.9
Monetary authorities - central bank.....	17.2	17.3	17.5	17.4	17.3	17.3	17.4	17.5	0.1
Credit intermediation and related activities <sup>1</sup> .....	2,556.5	2,601.6	2,610.6	2,602.9	2,558.4	2,599.2	2,602.6	2,604.4	1.8
Depository credit intermediation <sup>1</sup> .....	1,735.1	1,738.7	1,742.6	1,740.7	1,736.5	1,741.2	1,739.5	1,741.6	2.1
Commercial banking.....	1,317.9	1,315.7	1,316.4	1,315.5	1,319.3	1,318.6	1,314.8	1,317.4	2.6
Securities, commodity contracts, investments.....	808.7	817.2	819.9	818.1	811.4	814.4	818.5	821.0	2.5
Insurance carriers and related activities.....	2,315.6	2,348.2	2,356.2	2,340.5	2,321.6	2,347.2	2,348.4	2,346.4	-2.0
Funds, trusts, and other financial vehicles.....	86.0	87.2	87.2	86.8	86.2	87.1	86.5	87.0	0.5
Real estate and rental and leasing.....	1,899.0	1,949.0	1,955.7	1,923.4	1,935.2	1,956.9	1,957.5	1,960.2	2.7
Real estate.....	1,384.7	1,415.7	1,424.9	1,402.1	1,408.6	1,419.6	1,420.6	1,425.6	5.0
Rental and leasing services.....	489.8	509.3	506.8	498.0	502.0	513.6	513.3	511.1	-2.2
Lessors of nonfinancial intangible assets.....	24.5	24.0	24.0	23.3	24.6	23.7	23.6	23.5	-0.1
<b>Professional and business services.....</b>	<b>17,337</b>	<b>18,266</b>	<b>18,209</b>	<b>17,799</b>	<b>17,677</b>	<b>18,117</b>	<b>18,119</b>	<b>18,144</b>	<b>25</b>
Professional and technical services <sup>1</sup> .....	7,798.8	7,966.3	8,012.6	7,999.7	7,779.4	7,977.4	7,971.4	7,986.2	14.8
Legal services.....	1,112.1	1,127.9	1,131.7	1,118.6	1,119.1	1,126.1	1,128.0	1,125.6	-2.4
Accounting and bookkeeping services.....	1,001.7	866.1	894.8	983.1	906.2	911.7	888.9	892.1	3.2
Architectural and engineering services.....	1,289.1	1,335.2	1,335.3	1,314.0	1,309.2	1,332.1	1,334.6	1,334.3	-0.3
Computer systems design and related services.....	1,567.4	1,662.1	1,665.7	1,654.9	1,575.8	1,655.2	1,659.6	1,664.2	4.6
Management and technical consulting services.....	1,079.6	1,152.9	1,157.1	1,140.8	1,094.1	1,141.8	1,144.0	1,155.5	11.5
Management of companies and enterprises.....	1,980.9	2,023.6	2,028.9	2,012.1	1,987.5	2,020.6	2,020.8	2,020.3	-0.5
Administrative and waste services.....	7,557.3	8,276.0	8,167.9	7,787.1	7,910.5	8,119.3	8,126.5	8,137.0	10.5

See footnotes at end of table.



**ESTABLISHMENT DATA**

**Table B-1. Employees on nonfarm payrolls by industry sector and selected industry detail**

— Continued

[In thousands]

Industry	Not seasonally adjusted				Seasonally adjusted				Change from: Dec.2012 - Jan.2013 <sup>p</sup>
	Jan. 2012	Nov. 2012	Dec. 2012 <sup>p</sup>	Jan. 2013 <sup>p</sup>	Jan. 2012	Nov. 2012	Dec. 2012 <sup>p</sup>	Jan. 2013 <sup>p</sup>	
Administrative and waste services - Continued									
Administrative and support services <sup>1</sup> .....	7,193.1	7,901.6	7,794.8	7,414.6	7,539.6	7,744.7	7,750.4	7,758.7	8.3
Employment services <sup>1</sup> .....	2,899.5	3,324.4	3,304.8	3,047.2	3,057.9	3,201.6	3,206.6	3,204.2	-2.4
Temporary help services .....	2,292.3	2,667.9	2,652.0	2,424.3	2,425.5	2,556.9	2,566.0	2,557.9	-8.1
Business support services .....	829.1	850.8	856.6	837.2	825.7	834.1	833.5	834.3	0.8
Services to buildings and dwellings .....	1,652.1	1,850.4	1,766.7	1,680.0	1,817.0	1,841.6	1,839.7	1,844.8	5.1
Waste management and remediation services .....	364.2	374.4	373.1	372.5	370.9	374.6	376.1	378.3	2.2
Education and health services .....	19,976	20,675	20,679	20,394	20,106	20,460	20,510	20,535	25
Educational services .....	3,216.3	3,529.2	3,464.5	3,250.9	3,301.8	3,351.6	3,353.4	3,351.4	-2.0
Health care and social assistance .....	16,759.8	17,145.4	17,214.8	17,142.6	16,803.9	17,108.0	17,156.1	17,183.7	27.6
Health care <sup>3</sup> .....	14,121.2	14,439.1	14,500.1	14,443.3	14,163.9	14,419.7	14,460.7	14,483.5	22.8
Ambulatory health care services <sup>1</sup> .....	6,197.6	6,410.1	6,444.2	6,426.4	6,225.3	6,399.4	6,422.2	6,449.8	27.6
Offices of physicians .....	2,356.9	2,417.0	2,434.8	2,426.0	2,362.4	2,411.7	2,420.5	2,429.7	9.2
Outpatient care centers .....	633.0	666.0	670.9	673.7	634.6	667.0	670.0	674.7	4.7
Home health care services .....	1,160.8	1,229.9	1,240.4	1,229.9	1,167.8	1,226.1	1,235.1	1,236.4	1.3
Hospitals .....	4,756.2	4,824.0	4,838.2	4,829.6	4,760.5	4,820.7	4,829.9	4,833.5	3.6
Nursing and residential care facilities <sup>1</sup> .....	3,167.4	3,205.0	3,217.7	3,187.3	3,178.1	3,199.6	3,208.6	3,200.2	-8.4
Nursing care facilities .....	1,662.9	1,664.4	1,667.0	1,654.6	1,666.7	1,660.9	1,662.5	1,659.3	-3.2
Social assistance <sup>1</sup> .....	2,638.6	2,706.3	2,714.7	2,699.3	2,640.0	2,688.3	2,695.4	2,700.2	4.8
Child day care services .....	857.9	872.1	867.9	861.5	849.9	856.0	855.4	854.8	-0.6
Leisure and hospitality .....	12,904	13,598	13,588	13,254	13,585	13,861	13,894	13,917	23
Arts, entertainment, and recreation .....	1,723.1	1,829.7	1,827.0	1,761.1	1,952.5	1,979.6	1,983.8	1,989.5	5.7
Performing arts and spectator sports .....	356.4	394.2	396.4	370.7	400.7	407.9	413.8	415.2	1.4
Museums, historical sites, and similar institutions .....	123.7	131.7	130.2	124.4	136.0	137.0	137.1	136.7	-0.4
Amusements, gambling, and recreation .....	1,243.0	1,303.8	1,300.4	1,266.0	1,415.8	1,434.7	1,432.9	1,437.6	4.7
Accommodation and food services .....	11,180.9	11,768.3	11,761.4	11,492.8	11,632.4	11,881.7	11,910.2	11,927.2	17.0
Accommodation .....	1,713.5	1,762.1	1,751.4	1,715.9	1,810.2	1,815.3	1,813.3	1,813.2	-0.1
Food services and drinking places .....	9,467.4	10,006.2	10,010.0	9,776.9	9,822.2	10,066.4	10,096.9	10,114.0	17.1
Other services .....	5,343	5,452	5,449	5,406	5,417	5,464	5,470	5,478	8
Repair and maintenance .....	1,172.6	1,193.4	1,191.8	1,183.9	1,189.9	1,197.3	1,199.5	1,200.8	1.3
Personal and laundry services .....	1,280.8	1,326.2	1,329.0	1,313.6	1,301.3	1,327.0	1,329.4	1,333.5	4.1
Membership associations and organizations .....	2,889.5	2,932.7	2,928.2	2,908.1	2,925.6	2,939.4	2,940.7	2,943.5	2.8
Government .....	21,810	22,352	22,235	21,740	21,938	21,879	21,873	21,864	-9
Federal .....	2,810.0	2,788.0	2,797.0	2,766.0	2,834.0	2,798.0	2,796.0	2,791.0	-5.0
Federal, except U.S. Postal Service .....	2,191.8	2,188.4	2,188.9	2,165.6	2,214.9	2,196.7	2,193.7	2,189.3	-4.4
U.S. Postal Service .....	618.4	599.9	608.3	600.7	619.4	601.1	602.1	601.3	-0.8
State government .....	4,944.0	5,222.0	5,143.0	4,947.0	5,042.0	5,047.0	5,044.0	5,046.0	2.0
State government education .....	2,278.4	2,576.4	2,498.7	2,303.9	2,364.3	2,390.5	2,389.4	2,392.1	2.7
State government, excluding education .....	2,665.7	2,645.7	2,644.1	2,642.9	2,677.6	2,656.3	2,655.0	2,654.3	-0.7
Local government .....	14,056.0	14,342.0	14,295.0	14,027.0	14,062.0	14,034.0	14,033.0	14,027.0	-6.0
Local government education .....	7,908.2	8,103.0	8,104.1	7,878.6	7,796.3	7,762.7	7,764.7	7,760.0	-4.7
Local government, excluding education .....	6,148.1	6,239.3	6,190.4	6,148.2	6,265.6	6,271.1	6,268.2	6,266.8	-1.4

1 Includes other industries, not shown separately.

2 Includes motor vehicles, motor vehicle bodies and trailers, and motor vehicle parts.

3 Includes ambulatory health care services, hospitals, and nursing and residential care facilities.

p Preliminary

NOTE: Data have been revised to reflect March 2012 benchmark levels and updated seasonal adjustment factors.

**ESTABLISHMENT DATA**

**Table B-2. Average weekly hours and overtime of all employees on private nonfarm payrolls by industry sector, seasonally adjusted**

Industry	Jan. 2012	Nov. 2012	Dec. 2012 <sup>p</sup>	Jan. 2013 <sup>p</sup>
<b>AVERAGE WEEKLY HOURS</b>				
Total private.....	34.5	34.4	34.4	34.4
Goods-producing.....	40.4	40.3	40.4	40.1
Mining and logging.....	45.4	43.2	43.7	43.0
Construction.....	38.6	39.0	39.3	38.8
Manufacturing.....	40.9	40.7	40.7	40.6
Durable goods.....	41.2	40.9	41.0	40.8
Nondurable goods.....	40.3	40.2	40.4	40.2
Private service-providing.....	33.4	33.3	33.3	33.2
Trade, transportation, and utilities.....	34.7	34.6	34.4	34.3
Wholesale trade.....	38.8	38.5	38.5	38.3
Retail trade.....	31.8	31.6	31.4	31.3
Transportation and warehousing.....	38.5	38.5	38.4	38.6
Utilities.....	41.3	42.6	41.9	41.7
Information.....	36.7	36.4	36.5	36.2
Financial activities.....	37.3	37.2	37.2	37.1
Professional and business services.....	35.8	35.9	36.0	36.0
Education and health services.....	32.8	32.8	32.8	32.9
Leisure and hospitality.....	26.2	26.0	26.1	26.0
Other services.....	31.7	31.5	31.4	31.4
<b>AVERAGE OVERTIME HOURS</b>				
Manufacturing.....	3.3	3.3	3.3	3.3
Durable goods.....	3.3	3.2	3.2	3.2
Nondurable goods.....	3.4	3.4	3.4	3.4

p Preliminary

NOTE: Data have been revised to reflect March 2012 benchmark levels and updated seasonal adjustment factors.

**ESTABLISHMENT DATA**

**Table B-3. Average hourly and weekly earnings of all employees on private nonfarm payrolls by industry sector, seasonally adjusted**

Industry	Average hourly earnings				Average weekly earnings			
	Jan. 2012	Nov. 2012	Dec. 2012 <sup>p</sup>	Jan. 2013 <sup>p</sup>	Jan. 2012	Nov. 2012	Dec. 2012 <sup>p</sup>	Jan. 2013 <sup>p</sup>
Total private.....	\$23.28	\$23.67	\$23.74	\$23.78	\$ 803.16	\$ 814.25	\$ 816.66	\$ 818.03
Goods-producing.....	24.57	24.84	24.91	24.92	992.63	1,001.05	1,006.36	999.29
Mining and logging.....	28.07	28.93	29.22	29.34	1,274.38	1,249.78	1,276.91	1,261.62
Construction.....	25.51	25.93	25.98	26.05	984.69	1,011.27	1,021.01	1,010.74
Manufacturing.....	23.87	24.03	24.08	24.06	976.28	978.02	980.06	976.84
Durable goods.....	25.32	25.41	25.48	25.49	1,043.18	1,039.27	1,044.68	1,039.99
Nondurable goods.....	21.40	21.66	21.70	21.60	862.42	870.73	876.68	868.32
Private service-providing.....	22.97	23.39	23.46	23.51	767.20	778.89	781.22	780.53
Trade, transportation, and utilities.....	20.21	20.63	20.72	20.75	701.29	713.80	712.77	711.73
Wholesale trade.....	26.50	27.20	27.38	27.31	1,028.20	1,047.20	1,054.13	1,045.97
Retail trade.....	16.03	16.37	16.46	16.49	509.75	517.29	516.84	516.14
Transportation and warehousing.....	21.93	21.98	21.94	22.10	844.31	846.23	842.50	853.06
Utilities.....	33.65	35.14	35.00	35.10	1,389.75	1,496.96	1,466.50	1,463.67
Information.....	31.63	31.85	32.09	32.09	1,160.82	1,159.34	1,171.29	1,161.66
Financial activities.....	28.60	29.66	29.73	29.82	1,066.78	1,103.35	1,105.96	1,106.32
Professional and business services.....	27.87	28.22	28.31	28.40	997.75	1,013.10	1,019.16	1,022.40
Education and health services.....	24.05	24.40	24.46	24.48	788.84	800.32	802.29	805.39
Leisure and hospitality.....	13.32	13.39	13.38	13.37	348.98	348.14	349.22	347.62
Other services.....	20.63	21.01	21.08	21.14	653.97	661.82	661.91	663.80

p Preliminary

NOTE: Data have been revised to reflect March 2012 benchmark levels and updated seasonal adjustment factors.

**ESTABLISHMENT DATA**

**Table B-4. Indexes of aggregate weekly hours and payrolls for all employees on private nonfarm payrolls by industry sector, seasonally adjusted**

[2007=100]

Industry	Index of aggregate weekly hours <sup>1</sup>					Index of aggregate weekly payrolls <sup>2</sup>				
	Jan. 2012	Nov. 2012	Dec. 2012 <sup>p</sup>	Jan. 2013 <sup>p</sup>	Percent change from: Dec. 2012 - Jan. 2013 <sup>p</sup>	Jan. 2012	Nov. 2012	Dec. 2012 <sup>p</sup>	Jan. 2013 <sup>p</sup>	Percent change from: Dec. 2012 - Jan. 2013 <sup>p</sup>
Total private.....	95.8	97.0	97.2	97.3	0.1	106.4	109.5	110.0	110.4	0.4
Goods-producing.....	84.3	84.8	85.2	84.7	-0.6	93.6	95.2	95.9	95.4	-0.5
Mining and logging.....	120.4	115.8	118.0	116.6	-1.2	135.7	134.5	138.4	137.4	-0.7
Construction.....	74.9	76.3	77.3	76.7	-0.8	83.0	85.9	87.2	86.8	-0.5
Manufacturing.....	87.1	87.4	87.5	87.3	-0.2	96.7	97.7	98.0	97.7	-0.3
Durable goods.....	85.8	86.2	86.5	86.1	-0.5	96.5	97.2	97.9	97.5	-0.4
Nondurable goods.....	89.3	89.4	89.8	89.4	-0.4	97.0	98.2	98.9	98.0	-0.9
Private service-providing.....	99.2	100.6	100.8	100.6	-0.2	110.4	114.0	114.5	114.6	0.1
Trade, transportation, and utilities.....	95.8	96.8	96.5	96.3	-0.2	104.2	107.5	107.6	107.6	0.0
Wholesale trade.....	95.2	95.9	96.0	95.8	-0.2	105.3	108.9	109.7	109.1	-0.5
Retail trade.....	95.8	96.3	95.7	95.6	-0.1	101.5	104.2	104.2	104.3	0.1
Transportation and warehousing.....	96.2	98.3	98.9	99.1	0.2	107.1	109.6	110.2	111.2	0.9
Utilities.....	98.8	102.2	100.6	100.4	-0.2	109.9	118.7	116.4	116.4	0.0
Information.....	89.5	89.3	89.4	89.0	-0.4	100.8	101.2	102.2	101.7	-0.5
Financial activities.....	94.4	95.3	95.4	95.2	-0.2	105.3	110.2	110.6	110.8	0.2
Professional and business services.....	99.5	102.3	102.6	102.7	0.1	112.4	117.0	117.7	118.2	0.4
Education and health services.....	107.4	109.3	109.5	110.0	0.5	121.0	124.9	125.5	126.1	0.5
Leisure and hospitality.....	101.6	102.8	103.5	103.2	-0.3	109.1	111.1	111.7	111.4	-0.3
Other services.....	95.1	95.4	95.2	95.3	0.1	111.4	113.7	113.8	114.3	0.4

1 The indexes of aggregate weekly hours are calculated by dividing the current month's estimates of aggregate hours by the corresponding 2007 annual average aggregate hours. Aggregate hours estimates are the product of estimates of average weekly hours and employment.

2 The indexes of aggregate weekly payrolls are calculated by dividing the current month's estimates of aggregate weekly payrolls by the corresponding 2007 annual average aggregate weekly payrolls. Aggregate payrolls estimates are the product of estimates of average hourly earnings, average weekly hours, and employment.

p Preliminary

NOTE: Data have been revised to reflect March 2012 benchmark levels and updated seasonal adjustment factors.

**ESTABLISHMENT DATA**

**Table B-5. Employment of women on nonfarm payrolls by industry sector, seasonally adjusted**

Industry	Women employees (in thousands)				Percent of all employees			
	Jan. 2012	Nov. 2012	Dec. 2012 <sup>P</sup>	Jan. 2013 <sup>P</sup>	Jan. 2012	Nov. 2012	Dec. 2012 <sup>P</sup>	Jan. 2013 <sup>P</sup>
Total nonfarm.....	65,572	66,398	66,446	66,548	49.4	49.4	49.3	49.4
Total private.....	53,049	53,922	53,978	54,088	47.8	47.9	47.9	47.9
Goods-producing.....	4,066	4,100	4,095	4,102	22.2	22.2	22.1	22.1
Mining and logging.....	111	115	115	116	13.2	13.5	13.4	13.4
Construction.....	716	730	729	734	12.7	12.9	12.8	12.8
Manufacturing.....	3,239	3,255	3,251	3,252	27.4	27.3	27.2	27.2
Durable goods.....	1,720	1,731	1,733	1,735	23.2	23.1	23.1	23.2
Nondurable goods.....	1,519	1,524	1,518	1,517	34.2	34.2	34.1	34.0
Private service-providing.....	48,983	49,822	49,883	49,986	52.9	52.9	52.9	52.9
Trade, transportation, and utilities.....	10,204	10,389	10,405	10,426	40.2	40.4	40.4	40.4
Wholesale trade.....	1,691.4	1,708.0	1,705.8	1,710.4	30.1	29.9	29.8	29.9
Retail trade.....	7,359.0	7,502.1	7,514.1	7,531.1	49.6	50.0	50.1	50.1
Transportation and warehousing.....	1,017.2	1,040.6	1,047.2	1,045.8	23.3	23.3	23.3	23.3
Utilities.....	136.5	138.2	137.9	138.9	24.7	24.9	24.8	25.0
Information.....	1,079	1,074	1,075	1,085	40.4	40.0	40.1	40.3
Financial activities.....	4,497	4,536	4,530	4,535	58.2	58.0	57.8	57.9
Professional and business services.....	7,826	8,010	8,008	8,031	44.3	44.2	44.2	44.3
Education and health services.....	15,428	15,703	15,739	15,771	76.7	76.7	76.7	76.8
Leisure and hospitality.....	7,102	7,234	7,249	7,255	52.3	52.2	52.2	52.1
Other services.....	2,847	2,876	2,877	2,883	52.6	52.6	52.6	52.6
Government.....	12,523	12,476	12,468	12,460	57.1	57.0	57.0	57.0

p Preliminary

NOTE: Data have been revised to reflect March 2012 benchmark levels and updated seasonal adjustment factors.

**ESTABLISHMENT DATA**

**Table B-6. Employment of production and nonsupervisory employees on private nonfarm payrolls by industry sector, seasonally adjusted<sup>1</sup>**

[In thousands]

Industry	Jan. 2012	Nov. 2012	Dec. 2012 <sup>p</sup>	Jan. 2013 <sup>p</sup>
Total private.....	91,555	93,041	93,212	93,300
Goods-producing.....	13,240	13,306	13,337	13,378
Mining and logging.....	640	638	640	639
Construction.....	4,272	4,265	4,297	4,338
Manufacturing.....	8,328	8,403	8,400	8,401
Durable goods.....	5,092	5,161	5,163	5,165
Nondurable goods.....	3,236	3,242	3,237	3,236
Private service-providing.....	78,315	79,735	79,875	79,922
Trade, transportation, and utilities.....	21,506	21,825	21,879	21,868
Wholesale trade.....	4,520.9	4,603.7	4,613.3	4,623.5
Retail trade.....	12,780.2	12,913.0	12,917.7	12,916.8
Transportation and warehousing.....	3,764.0	3,863.3	3,902.7	3,881.5
Utilities.....	440.5	444.7	445.0	446.3
Information.....	2,148	2,172	2,173	2,176
Financial activities.....	5,935	6,021	6,029	6,031
Professional and business services.....	14,556	14,972	14,974	14,974
Education and health services.....	17,637	17,941	17,978	18,007
Leisure and hospitality.....	11,989	12,234	12,273	12,287
Other services.....	4,544	4,570	4,569	4,579

<sup>1</sup> Data relate to production employees in mining and logging and manufacturing, construction employees in construction, and nonsupervisory employees in the service-providing industries. These groups account for approximately four-fifths of the total employment on private nonfarm payrolls.

<sup>p</sup> Preliminary

NOTE: Data have been revised to reflect March 2012 benchmark levels and updated seasonal adjustment factors.

**ESTABLISHMENT DATA**

**Table B-7. Average weekly hours and overtime of production and nonsupervisory employees on private nonfarm payrolls by industry sector, seasonally adjusted<sup>1</sup>**

Industry	Jan. 2012	Nov. 2012	Dec. 2012 <sup>p</sup>	Jan. 2013 <sup>p</sup>
<b>AVERAGE WEEKLY HOURS</b>				
Total private.....	33.8	33.7	33.7	33.6
Goods-producing.....	41.3	41.1	41.2	41.0
Mining and logging.....	47.9	45.4	45.9	44.1
Construction.....	39.2	39.5	39.6	39.3
Manufacturing.....	41.8	41.6	41.7	41.6
Durable goods.....	42.2	41.9	42.0	41.9
Nondurable goods.....	41.1	41.1	41.3	41.1
Private service-providing.....	32.5	32.5	32.5	32.4
Trade, transportation, and utilities.....	33.9	33.8	33.7	33.6
Wholesale trade.....	38.6	38.6	38.6	38.6
Retail trade.....	30.8	30.5	30.4	30.1
Transportation and warehousing.....	37.8	38.2	38.1	38.3
Utilities.....	40.9	42.2	40.9	40.8
Information.....	36.2	35.8	35.7	35.5
Financial activities.....	36.6	36.9	36.9	36.6
Professional and business services.....	35.3	35.2	35.3	35.3
Education and health services.....	32.3	32.3	32.3	32.3
Leisure and hospitality.....	25.0	24.9	24.9	24.9
Other services.....	30.8	30.5	30.5	30.5
<b>AVERAGE OVERTIME HOURS</b>				
Manufacturing.....	4.2	4.1	4.2	4.2
Durable goods.....	4.4	4.1	4.2	4.2
Nondurable goods.....	4.0	4.2	4.3	4.2

<sup>1</sup> Data relate to production employees in mining and logging and manufacturing, construction employees in construction, and nonsupervisory employees in the service-providing industries. These groups account for approximately four-fifths of the total employment on private nonfarm payrolls.

p Preliminary

NOTE: Data have been revised to reflect March 2012 benchmark levels and updated seasonal adjustment factors.

**ESTABLISHMENT DATA**

**Table B-8. Average hourly and weekly earnings of production and nonsupervisory employees on private nonfarm payrolls by industry sector, seasonally adjusted<sup>1</sup>**

Industry	Average hourly earnings				Average weekly earnings			
	Jan. 2012	Nov. 2012	Dec. 2012 <sup>p</sup>	Jan. 2013 <sup>p</sup>	Jan. 2012	Nov. 2012	Dec. 2012 <sup>p</sup>	Jan. 2013 <sup>p</sup>
Total private.....	\$19.61	\$19.88	\$19.92	\$19.97	\$ 662.82	\$ 669.96	\$ 671.30	\$ 670.99
Goods-producing.....	20.79	21.05	21.10	21.13	858.63	865.16	869.32	866.33
Mining and logging.....	24.85	26.13	26.20	26.27	1,190.32	1,186.30	1,202.58	1,158.51
Construction.....	23.73	24.08	24.14	24.18	930.22	951.16	955.94	950.27
Manufacturing.....	19.03	19.17	19.19	19.23	795.45	797.47	800.22	799.97
Durable goods.....	20.16	20.25	20.31	20.33	850.75	848.48	853.02	851.83
Nondurable goods.....	17.20	17.40	17.38	17.44	706.92	715.14	717.79	716.78
Private service-providing.....	19.35	19.63	19.67	19.72	628.88	637.98	639.28	638.93
Trade, transportation, and utilities.....	17.28	17.49	17.50	17.56	585.79	591.16	589.75	590.02
Wholesale trade.....	22.09	22.40	22.48	22.45	852.67	864.64	867.73	866.57
Retail trade.....	13.68	13.84	13.84	13.91	421.34	422.12	420.74	418.69
Transportation and warehousing.....	19.61	19.44	19.43	19.48	741.26	742.61	740.28	746.08
Utilities.....	31.07	32.18	31.83	31.97	1,270.76	1,358.00	1,301.85	1,304.38
Information.....	26.78	27.24	27.47	27.78	969.44	975.19	980.68	986.19
Financial activities.....	22.39	23.21	23.34	23.37	819.47	856.45	861.25	855.34
Professional and business services.....	23.12	23.40	23.45	23.51	816.14	823.68	827.79	829.90
Education and health services.....	21.00	21.19	21.24	21.26	678.30	684.44	686.05	686.70
Leisure and hospitality.....	11.56	11.65	11.66	11.64	289.00	290.09	290.33	289.84
Other services.....	17.43	17.71	17.75	17.79	536.84	540.16	541.38	542.60

<sup>1</sup> Data relate to production employees in mining and logging and manufacturing, construction employees in construction, and nonsupervisory employees in the service-providing industries. These groups account for approximately four-fifths of the total employment on private nonfarm payrolls.

<sup>p</sup> Preliminary

NOTE: Data have been revised to reflect March 2012 benchmark levels and updated seasonal adjustment factors.



**ESTABLISHMENT DATA**

**Table B-9. Indexes of aggregate weekly hours and payrolls for production and nonsupervisory employees on private nonfarm payrolls by industry sector, seasonally adjusted<sup>1</sup>**

[2002=100]

Industry	Index of aggregate weekly hours <sup>2</sup>					Index of aggregate weekly payrolls <sup>3</sup>				
	Jan. 2012	Nov. 2012	Dec. 2012 <sup>p</sup>	Jan. 2013 <sup>p</sup>	Percent change from: Dec. 2012 - Jan. 2013 <sup>p</sup>	Jan. 2012	Nov. 2012	Dec. 2012 <sup>p</sup>	Jan. 2013 <sup>p</sup>	Percent change from: Dec. 2012 - Jan. 2013 <sup>p</sup>
Total private.....	103.3	104.7	104.8	104.6	-0.2	135.3	138.9	139.5	139.5	0.0
Goods-producing.....	83.6	83.6	84.0	83.8	-0.2	106.4	107.7	108.5	108.5	0.0
Mining and logging.....	162.9	153.9	156.1	149.8	-4.0	235.4	233.9	237.9	228.8	-3.8
Construction.....	83.8	84.4	85.2	85.4	0.2	107.4	109.7	111.1	111.5	0.4
Manufacturing.....	79.9	80.2	80.4	80.2	-0.2	99.5	100.6	100.9	100.9	0.0
Durable goods.....	80.7	81.3	81.5	81.3	-0.2	101.6	102.7	103.3	103.2	-0.1
Nondurable goods.....	78.4	78.5	78.8	78.4	-0.5	95.2	96.5	96.7	96.6	-0.1
Private service-providing.....	108.6	110.6	110.8	110.5	-0.3	144.0	148.8	149.3	149.4	0.1
Trade, transportation, and utilities.....	101.6	102.8	102.8	102.4	-0.4	125.3	128.3	128.3	128.3	0.0
Wholesale trade.....	102.8	104.7	104.9	105.1	0.2	133.7	138.1	138.9	139.0	0.1
Retail trade.....	99.6	99.7	99.4	98.4	-1.0	116.8	118.3	117.9	117.3	-0.5
Transportation and warehousing.....	107.1	111.1	111.9	111.9	0.0	133.2	137.0	138.0	138.3	0.2
Utilities.....	92.1	96.0	93.1	93.1	0.0	119.5	128.9	123.7	124.3	0.5
Information.....	88.7	88.7	88.5	88.2	-0.3	117.7	119.7	120.4	121.3	0.7
Financial activities.....	102.3	104.6	104.7	103.9	-0.8	140.9	149.4	150.4	149.4	-0.7
Professional and business services.....	115.2	118.1	118.5	118.5	0.0	158.4	164.5	165.3	165.7	0.2
Education and health services.....	122.9	125.0	125.3	125.5	0.2	169.7	174.1	174.9	175.4	0.3
Leisure and hospitality.....	109.8	111.6	111.9	112.1	0.2	144.1	147.6	148.2	148.1	-0.1
Other services.....	98.2	97.8	97.7	97.9	0.2	124.7	126.1	126.4	127.0	0.5

1 Data relate to production employees in mining and logging and manufacturing, construction employees in construction, and nonsupervisory employees in the service-providing industries. These groups account for approximately four-fifths of the total employment on private nonfarm payrolls.

2 The indexes of aggregate weekly hours are calculated by dividing the current month's estimates of aggregate hours by the corresponding 2002 annual average aggregate hours. Aggregate hours estimates are the product of estimates of average weekly hours and employment.

3 The indexes of aggregate weekly payrolls are calculated by dividing the current month's estimates of aggregate weekly payrolls by the corresponding 2002 annual average aggregate weekly payrolls. Aggregate payrolls estimates are the product of estimates of average hourly earnings, average weekly hours, and employment.

p Preliminary

NOTE: Data have been revised to reflect March 2012 benchmark levels and updated seasonal adjustment factors.