

CONTINGENCY PLAN
BUILDING 1365
HAZARDOUS WASTE STORAGE FACILITY
JULY 2012

TABLE OF CONTENTS

Table of Contentsi

Contingency Response Plan.....1

 Purpose.....1

 Fire of Explosion Response.....1

 Spill Response.....1

 General Information.....2

 Table 1 – On Site Emergency Equipment.....2

LIST OF APPENDICES

Appendix 1 Site Map

Appendix 2 The Red Plan

Appendix 3 Clean Up Procedures

Appendix 4 Hazardous Material Spill Report

CONTINGENCY RESPONSE PLAN

Purpose

To describe response actions in the event of an imminent or actual fire, explosion, spill or release of hazardous waste (HW).

FIRE OR EXPLOSION RESPONSE

1) **WARN/EVACUATE PERSONNEL – ENFORCE SAFETY AND SECURITY MEASURES;** evacuate all personnel to the assembly point as shown on the Bldg. 1365 Site Map at Attachment 1.

2) **CALL THE FIRE DEPARTMENT AT:**

**Travis AFB Fire Department
424-4911**

3) **The Fire Dept. will respond in accordance with THE RED PLAN at Attachment 2 and:**

- Use the HW inventory provided and assess the character, extent and cause of the fire or explosion.
- Mobilize response resources as described in THE RED PLAN to assess possible hazards to human health and direct and indirect effects to the surrounding environment, surface water and soil. The assessment shall also include effects from materials used to control fire or effects of the explosion.
- Determine potential effects to human health or the environment off-Base. If determined to be necessary, local authority and other agency notifications shall be accomplished in accordance with THE RED PLAN.

SPILL RESPONSE

1) If a spill occurs, the person discovering the spill will make every effort to take the following actions as soon as possible:

- **STOP THE PRODUCT FLOW – STOP TRANSFERES, SECURE PUMPS, CLOSE VALVES;**
- **WARN/EVACUATE PERSONNEL – ENFORCE SAFETY AND SECURITY MEASURES;** evacuate all personnel to the assembly point as shown on the Bldg. 1365 Site Map at Attachment 1;
- **SHUT OFF IGNITION SOURCES – MOTORS, ELECTRICAL CIRCUITS, OPEN FLAMES;**
- **CONTAIN THE SPILL – SECURE VALVES, BLOCK DRAINS, DEPLOY ABSORBENTS;**

2) If the spill is **NOT** within HWSF personnel to contain and clean up, **CALL THE FIRE DEPT AT:**

**Travis AFB Fire Department
424-4911**

Provide:

- Your location, name, phone number, and nature of the incident;
- Substance released, estimated amount, and rate of discharge if not stopped;
- Route of release, extent of effected area;
- Any injuries or medical assistance needed.

3) Maintain site isolation until the Fire Department arrives to assume control of the incident. Provide the On-Scene Commander (OSC) with a current inventory of the HW on-site. The inventory along with a copy of this plan will be kept in a box adjacent to the personnel gate for Bldg 1366.

4) The Fire Dept. will respond in accordance with THE RED PLAN at Attachment 2 and:

- Use the HW inventory provided and assess the character, extent and area affected by the spill
 - Deploy absorbents, booms, drain covers and other equipment as necessary to contain the release.
 - Mobilize response resources as described in THE RED PLAN to assist in spill containment and to assess possible hazards to human health and direct and indirect effects to the surrounding environment, surface water and soil. The assessment shall also include effects from materials used to control, contain and clean up the spill and/or control fire.
 - Determine potential effects to human health or the environment off-Base. If determined to be necessary, local authority and other agency notifications shall be accomplished in accordance with THE RED PLAN.
- 5) After containment has been established, the Spill Team shall refer to Attachment 3 and clean up the spill.
- 6) Any damaged secondary containments (drum storage areas, loading areas and double walled tanks) shall be repaired prior to returning the area or tank to service.
- 7) If the spill is within the capabilities of HWSF personnel to clean up:
- Contact the Hazardous Waste Program Manager in 60 CES/CEA at 424-4321, or 424-3739.
 - Refer to Attachment 3, Clean Up Procedures for guidance.
 - Don appropriate personal protective equipment before implementing cleanup activities;
 - If possible, prevent further leaking by using reasonable means, contain the spill and prevent it from entering the soil, storm drains, or waterways using absorbents, spill booms, or other reasonable means;
 - Transfer any leaking containers into suitable containers and/or over-packs. Place all spill residues in suitable containers for disposal.
- 8) Upon completion of clean up activities, Hazardous Material Spill Report (Attachment 4) shall be completed and placed in the HWSF Incident File
- 9) If necessary, a written report containing a description of the incident including response actions, substance(s) released, environmental impact, clean up activities and waste disposal shall be submitted by 60 CES/CEA to appropriate agencies. A copy of the report shall be placed in the HWSF Incident File.

General Information

1) Building 1365 is located on a concrete pad with an 8-inch curb around the outer edge. Inside the building are fifteen (15) separate bays designed for HW storage. Bays 1 through 6 have a 6-inch concrete dike for spill containment. The six (6) 2,500 gallon above ground storage tanks have integral secondary containment and are placed on a concrete pad with an 8-inch curb/dike perimeter.

2) Emergency Coordinators:

Primary – Ms. Milea A. Franklin
 411 Airmen Drive, Building 570
 Travis AFB, CA 94535-2001
 Office (707) 424-4321
 Home Cell (816) 392-3344

Alternate – Mr. Anthony F. Llanes
 744 Collins Drive
 Travis AFB, CA 94535-2001
 Office (707) 424- 5959
 Home Cell (707) 365-6141

3) Hazardous waste inventory: A weekly update of the HW inventory is posted in the box next to the personnel entrance gate.

4) On-site emergency equipment is listed in Table 1.

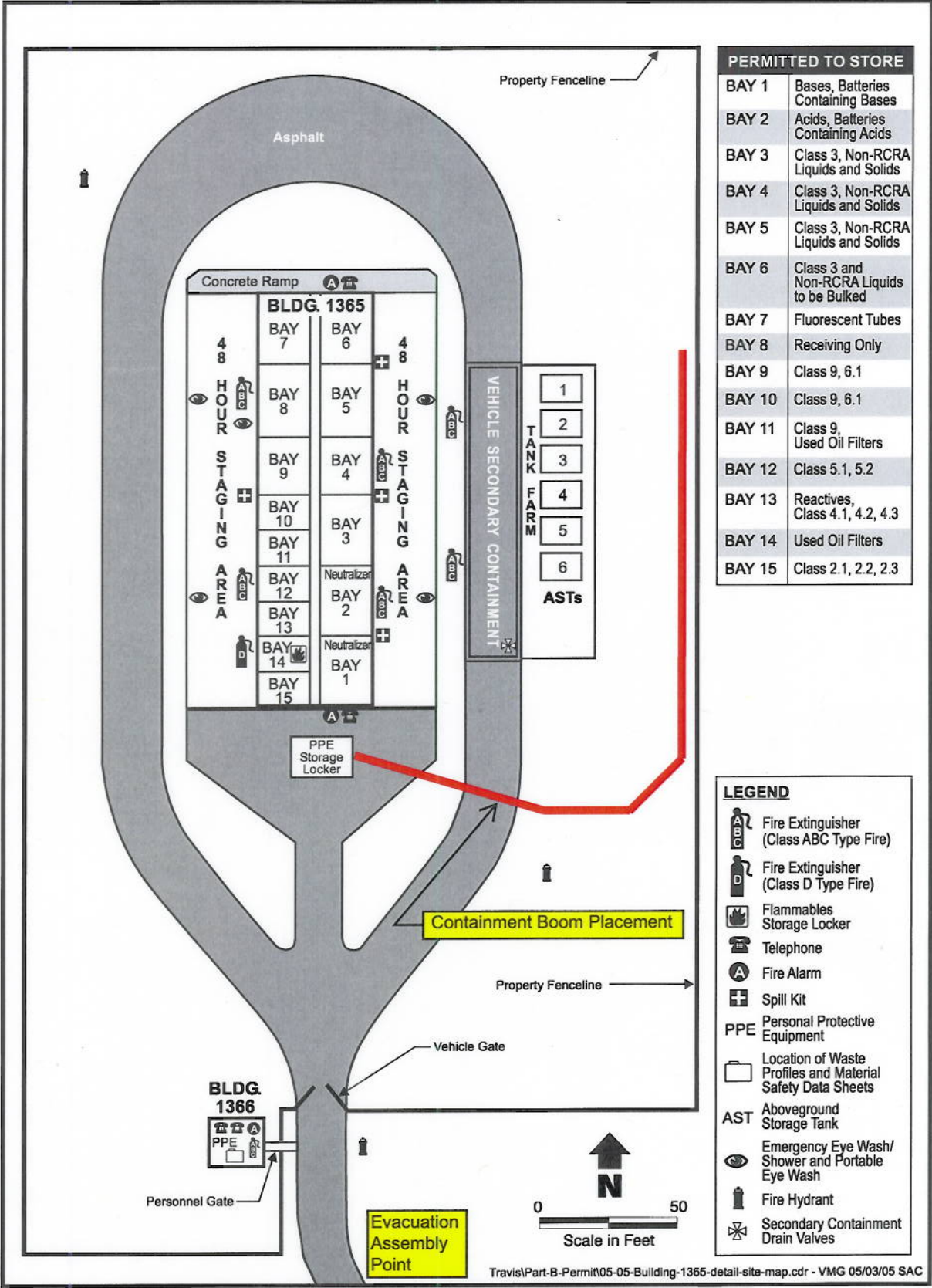
**Table 1
On-Site Emergency Equipment**

Emergency Equipment	Description	Qty.
Fire Extinguisher (ABC)	For extinguishing small fires not involving flammable metals.	6
Fire Extinguisher (D)	For extinguishing small fires involving flammable metals.	2
Cell-phone	For use outside of facility only, may initiate ignition of vapors in explosive atmospheres.	1
Telephone	Two are within 150 feet of storage facility, one in the office of Bldg 1366	3
Portable Emergency Eyewash	Used for flushing out eyes with water in the event of chemical splashes affecting the eye area.	1
Emergency Eyewash	Used for flushing out eyes with water in the event of chemical splashes affecting the eye area.	4
Personal Protective Equipment Located in Bay 8		
Gloves	Used to protect hands from injury during the handling of drums; provides limited chemical exposure protection.	4 Pair
Goggles	Used to protect eyes from injury during the handling of drums; provides limited chemical exposure protection.	4
Aprons	Used to protect body from injury during the handling of drums; provides limited chemical exposure protection.	4
Safety Glasses	Used to protect eyes from injury during the handling of drums; provides limited chemical exposure protection.	4
Face Shields	Used to protect face from injury during the handling of drums; provides limited chemical exposure protection.	2
Coveralls (cotton)	Used to protect body from injury during spill cleanup of acids, bases, and unknown liquids; provides limited chemical exposure protection	4
Spill Cleanup Supplies Located Between Bays 9 & 10		
Broom	Used to sweep up spilled material.	2
85 gal Over-pack	Used to over-pack damaged containers.	1
Drum pump	Used to transfer liquids	1
Aggressive Absorbent	Used to absorb acids, bases, and unknown liquids.	20 Bag
Non-aggressive Absorbent	Used to absorb oils, coolants, solvents and water.	20 Bag
Spill Cleanup Supplies Located Between Bays 1 & 2		
3" X 4' Socks	Used to absorb spilled liquids containing acids, bases, or unknown liquid.	13
3" X 10' Socks	Used to absorb spilled liquids containing acids, bases, or unknown liquids.	2
5" X 10' Socks	Used to absorb spilled liquids containing acids, bases, or unknown liquids.	2

2-Liter Pillows	Used to absorb spilled liquids containing acids, bases, or unknown liquids.	7
Mats	Used to absorb spilled liquids containing acids, bases, or unknown liquids.	50
Disposal Bags	Used for containing HW socks, pads, mats, and PPE.	10
Silver Shield Gloves	To protect hands during cleanup of acids, bases, and unknown liquids; provides limited chemical exposure protection.	4 Pair
Nitrile Gloves	Used to protect hands from injury during spill cleanup of acids, bases, and unknown liquids; provides limited chemical exposure protection.	4 Pair
Leather Gloves	Used to protect hands from injury during spill cleanup; provides limited chemical exposure protection.	1 Pair
Goggles	Used to protect eyes from injury during spill cleanup of acids, bases, and unknown liquids; provides limited chemical exposure protection.	2
Face Shield	Used to protect face from injury during spill cleanup of acids, bases, and unknown liquids; provides limited chemical exposure protection.	1
Tyvek® Coveralls	Used to protect body from injury during spill cleanup of acids, bases, and unknown liquids; provides limited chemical exposure protection.	4
Shoe Covers	Used to protect feet from injury during spill cleanup of acids, bases, and unknown liquids; provides limited chemical exposure protection.	4
Pulp Bags	Used to absorb spilled liquids containing acids, bases, and unknown liquids.	2
Chemical Spill Sign	Used to identify that a chemical spill has occurred in designated area.	1
Class II Guide Book	Used to determine the proper spill response procedures for the specified spilled material.	1
Non-sparking Shovel	Used for picking up or removing spilled material containing acids, bases, and unknown materials.	1
Spill Cleanup Supplies Located Between Bays 3 & 4 and Between Bays 5 & 6		
3" X 4' Socks	Used to absorb spilled liquids containing oils, coolants, solvents, and water.	30
3" X 10' Socks	Used to absorb spilled liquids containing oils, coolants, solvents, and water.	2
Two Liter Pillows	Used to absorb spilled liquids containing oils, coolants, solvents, and water.	20
Mats	Used to absorb spilled liquids containing oils, coolants, solvents, and water.	25
Disposal Bags	Used for containing HW socks, pads, mats, and PPE.	24
Silver Shield Gloves	To protect hands during cleanup of acids, bases, and unknown liquids; provides limited chemical exposure protection.	4 Pair
Nitrile Gloves	Used to protect hands from injury during spill cleanup of acids, bases, and unknown liquids; provides limited chemical exposure protection.	4 Pair
Goggles	Used to protect eyes from injury during spill cleanup of acids, bases, and unknown liquids; provides limited chemical exposure protection.	2
Tyvek® Coveralls	Used to protect body from injury during spill cleanup of acids, bases, and unknown liquids; provides limited chemical exposure protection.	4

wipes	Used to absorb spilled liquids containing oils, coolants, solvents, and water.	1
Metatarsal Guards	Used for foot protection	4 pair
Pulp Bag	Used to absorb spilled liquids containing oils, coolants, solvents, and water.	1
Chemical Spill Sign	Used to identify that a chemical spill has occurred in designated area.	1
Sticks of Repair Putty	Used to repair damaged drums.	2
Solid Absorbent (25 lb)	Used to absorb spilled liquids containing oils, coolants, solvents, and water.	1 Bag
Class II Guide Book	Used to determine the proper spill response procedures for the specified spilled material.	1
Non-sparking Shovel	Used for picking up or removing spilled material containing oils, coolants, solvents, and water.	1
Additional Equipment		
Diesel Forklift	Used for moving Drums	1
Bung Wrench	Used for opening and tightening bungs on drums; located inside toolbox.	1
Drum Dolly	Used for moving individual drums.	1

Bldg. 1365 Site Map



PERMITTED TO STORE

BAY 1	Bases, Batteries Containing Bases
BAY 2	Acids, Batteries Containing Acids
BAY 3	Class 3, Non-RCRA Liquids and Solids
BAY 4	Class 3, Non-RCRA Liquids and Solids
BAY 5	Class 3, Non-RCRA Liquids and Solids
BAY 6	Class 3 and Non-RCRA Liquids to be Bulked
BAY 7	Fluorescent Tubes
BAY 8	Receiving Only
BAY 9	Class 9, 6.1
BAY 10	Class 9, 6.1
BAY 11	Class 9, Used Oil Filters
BAY 12	Class 5.1, 5.2
BAY 13	Reactives, Class 4.1, 4.2, 4.3
BAY 14	Used Oil Filters
BAY 15	Class 2.1, 2.2, 2.3

LEGEND

- Fire Extinguisher (Class ABC Type Fire)
- Fire Extinguisher (Class D Type Fire)
- Flammables Storage Locker
- Telephone
- Fire Alarm
- Spill Kit
- Personal Protective Equipment
- Location of Waste Profiles and Material Safety Data Sheets
- Aboveground Storage Tank
- Emergency Eye Wash/ Shower and Portable Eye Wash
- Fire Hydrant
- Secondary Containment Drain Valves

60TH AMW INTEGRATED CONTINGENCY PLAN FOR OIL AND HAZARDOUS
SUBSTANCE SPILL PREVENTION AND RESPONSE

EMERGENCY RESPONSE ACTION PLAN

THE RED PLAN

PURPOSE — IN THE EVENT OF A SPILL OF OIL OR HAZARDOUS SUBSTANCE, USE **THE RED PLAN** TO INITIATE RESPONSE ACTIONS. REFER TO THE REMAINDER OF THE *60 AMW INTEGRATED CONTINGENCY PLAN (60 AMW ICP)* FOR IN-DEPTH INFORMATION ON RESPONSE, NOTIFICATION, ORGANIZATION, DUTIES, CONTAINMENT, CLEANUP AND REMEDIATION PROCEDURES.

- USE **THE RED PLAN** IN THE EARLY STAGES OF A SPILL AND TRANSITION TO THE *60 AMW ICP*, AFTER APPROPRIATE NOTIFICATIONS AND RESPONSE ACTIONS ARE UNDERWAY.

INITIAL RESPONSE ACTIONS

• IF A SPILL OCCURS, THE PERSON DISCOVERING THE SPILL WILL MAKE EVERY EFFORT TO TAKE THE FOLLOWING ACTIONS AS SOON AS POSSIBLE:

- (1) **STOP THE PRODUCT FLOW** – STOP TRANSFERS, SECURE PUMPS, CLOSE VALVES;
- (2) **WARN PERSONNEL** – SOUND ALARMS, ENFORCE SAFETY AND SECURITY MEASURES;
- (3) **SHUT OFF IGNITION SOURCES** – MOTORS, ELECTRICAL CIRCUITS, OPEN FLAMES;
- (4) **CONTAIN THE SPILL** – SECURE VALVES, BLOCK DRAINS, DEPLOY ABSORBENTS;
- (5) **MAKE NOTIFICATIONS** – SUPERVISOR, FIRE DEPARTMENT;
- (6) **BEGIN CLEANUP** – IF WITHIN CAPABILITIES (SEE RESPONSIBLE UNIT ACTIONS).

• IF THE SPILL IS CONSIDERED AN EMERGENCY AND THERE IS A POTENTIAL ENVIRONMENTAL, LIFE, HEALTH, FIRE OR OTHER SAFETY HAZARD, NOTIFY THE FIRE DEPARTMENT IMMEDIATELY.

Travis AFB Fire Department
911 using base phone
707-424-4911 using cell phone

• IN THE EVENT OF A SPILL, THE RESPONDING SENIOR FIRE OFFICER (SFO) WILL INITIALLY ACT AS THE INCIDENT COMMANDER (IC). AS NECESSARY, THE IC WILL TAKE ACTION TO NOTIFY (THROUGH THE COMMAND POST, 4-5517) THE APPROPRIATE SPILL CLEANUP TEAM, THE ASSET MANAGEMENT FLIGHT, BIOENVIRONMENTAL FLIGHT, SECURITY FORCES AND OTHERS AS NECESSARY FOR SUPPORT (SEE KEY BASE PERSONNEL, OFFICES AND RESPONSE TEAM MEMBERS LIST ON PAGE RP-6).

EOC DIRECTOR AND QUALIFIED INDIVIDUAL

THE MISSION SUPPORT GROUP COMMANDER (60 MSG/CC) IS THE DESIGNATED EMERGENCY OPERATIONS CENTER (EOC) DIRECTOR. THE FIRST ALTERNATE EOC DIRECTOR IS THE DEPUTY MISSION SUPPORT GROUP COMMANDER (60 MSG/CD). THE BASE CIVIL ENGINEER (60 CES/CC) IS THE SECOND ALTERNATE EOC DIRECTOR AND IS THE DESIGNATED QUALIFIED INDIVIDUAL (QI) WITH AUTHORITY TO CONTRACT OUTSIDE CLEANUP SERVICES IF NEEDED.

Designated EOC Director	60 MSG/CC	(707) 424-2665
1st Alternate EOC Director	60 MSG/CD	(707) 424-2666
2nd Alternate EOC Director/QI	60 CES/CC	(707) 424-2492

• THE ABOVE TELEPHONE NUMBERS ARE DAYTIME WORK NUMBERS. AT OTHER TIMES, CONTACT CAN BE MADE THROUGH THE FIRE DEPARTMENT (707) 424-3886 OR THE TRAVIS AFB COMMAND POST AT (707) 424-5517.

RESPONSIBLE UNIT/ACTIVITY ACTIONS

• RESPONSIBLE UNITS/ACTIVITIES WILL CLEAN UP SMALL SPILLS IF IT CAN BE DONE SAFELY AND IT IS WITHIN THEIR CAPABILITIES TO DO SO. WASTE GENERATED FROM CLEAN UP MANAGED IN ACCORDANCE WITH THE TRAVIS AFB HAZARDOUS WASTE MANAGEMENT PLAN.

• NOTIFY THE FIRE DEPARTMENT FOR ALL SPILLS BEYOND THE CLEANUP CAPABILITIES OF THE RESPONSIBLE UNIT/ACTIVITY **AND/OR** IF THE SPILL POSES AN ENVIRONMENTAL, FIRE, EXPLOSION, OR EXPOSURE HAZARD.

➤ CONTACT THE FIRE DEPARTMENT FOR ANY SPILL THAT CONTACTS SOIL, WATER OR ENTERS A STORM OR SANITARY SEWER DRAIN.

RESPONSE STRATEGY/INCIDENT COMMANDER ACTIONS

• THE FIRE DEPARTMENT IS THE FIRST RESPONDER TO ALL SPILLS BEYOND RESPONSIBLE UNIT/ACTIVITY CLEANUP CAPABILITIES. UPON ARRIVAL AT THE SPILL SITE, APPROPRIATE STEPS WILL BE TAKEN TO ENSURE CONTROL OF THE SPILL AND MINIMIZE OR ELIMINATE FIRE/EXPLOSION HAZARDS. EVERY EFFORT WILL BE MADE TO CONTAIN THE SPILL AT THE SITE AND PREVENT IT FROM ENTERING SOIL AND DRAINAGE SYSTEMS WHERE IT COULD MIGRATE OFF THE INSTALLATION TO SENSITIVE AREAS. THE SFO WILL BE THE IC FOR THE SPILL UNLESS RELIEVED AS APPROVED BY 60 MSG/CC, 60 MSG/CD OR 60 CES/CC.

• UPON NOTIFICATION, THE FIRE DEPARTMENT DEPLOYS TO THE SCENE WITH EMERGENCY AND SPILL RESPONSE VEHICLES AND EQUIPMENT, INITIATES CONTAINMENT AND CONTROL, THEN MOBILIZES/NOTIFIES THE APPROPRIATE SPILL CLEANUP TEAM, THE ASSET MANAGEMENT FLIGHT, BIOENVIRONMENTAL FLIGHT, SECURITY FORCES AND ANY OTHER FUNCTIONS OR OFFICES REQUIRED

➤ REFER TO THE SPILL RESPONSE PROCEDURE DECISION CHART ON PAGE RP-4 AND THE EMERGENCY NOTIFICATIONS LIST ON PAGE RP-6

DEPENDING ON RESPONSE ACTIONS REQUIRED, **60 MSG/CC**, **60 MSG/CD** OR **60 CES/CC** MAY RESPOND TO THE SITE AND ASSUME **IC** RESPONSIBILITIES. THE FIRE DEPARTMENT WILL RETAIN FIRE PROTECTION RESPONSIBILITIES AND WORK WITH THE **IC** TO COORDINATE ACTIONS.

- ON BASE RESOURCES WILL BE USED TO CLEAN UP THE SPILL IF POSSIBLE. THE SPILL RESPONSE CONTRACTOR WILL BE MOBILIZED FOR LARGE SPILLS THAT EXCEED THE INSTALLATION'S CAPABILITIES.

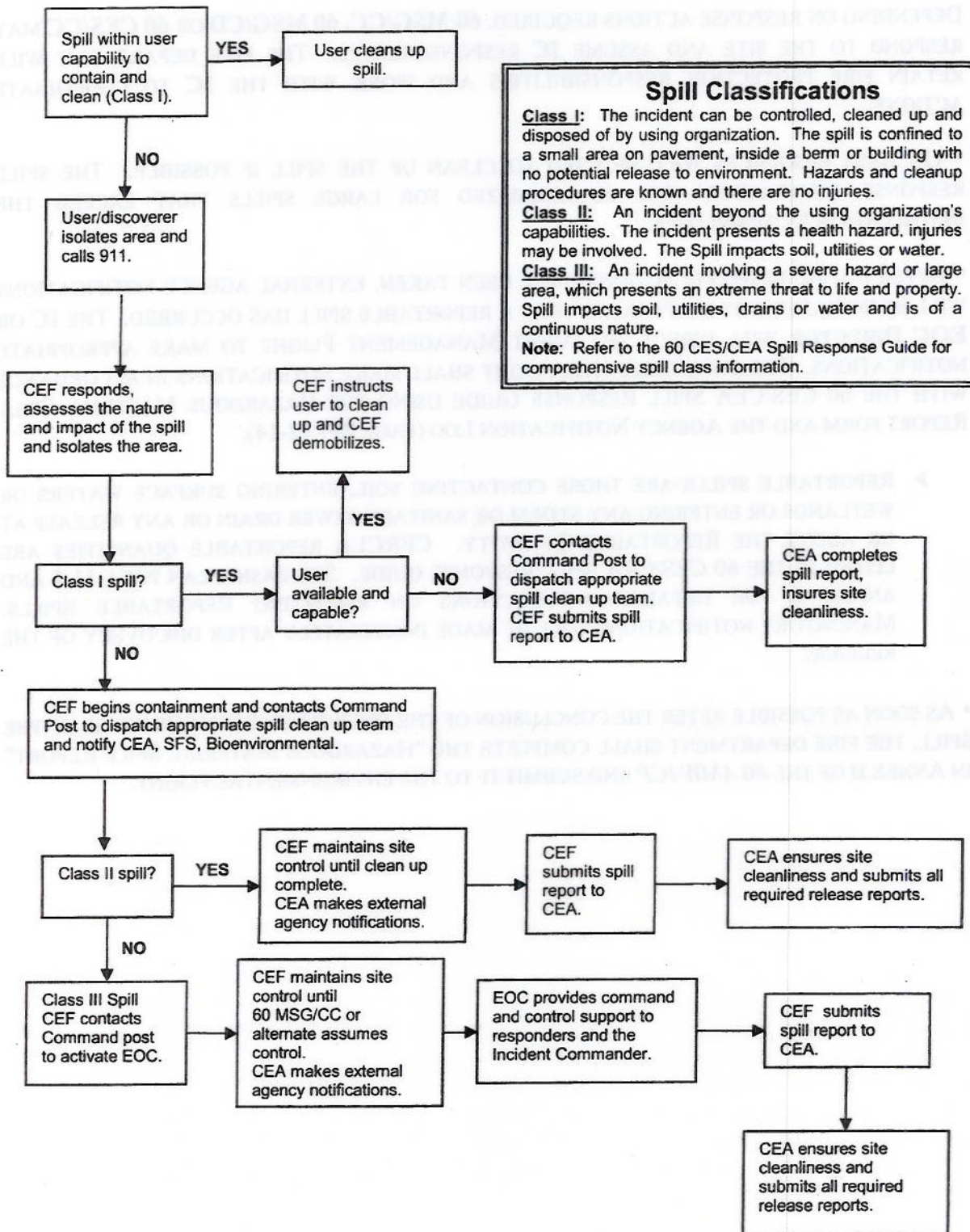
- AFTER INITIAL RESPONSE ACTIONS HAVE BEEN TAKEN, EXTERNAL AGENCY NOTIFICATIONS WILL BE INITIATED IF IT IS APPARENT THAT A REPORTABLE SPILL HAS OCCURRED. THE **IC** OR **EOC DIRECTOR** WILL DIRECT THE ASSET MANAGEMENT FLIGHT TO MAKE APPROPRIATE NOTIFICATIONS. THE ENVIRONMENTAL FLIGHT SHALL MAKE NOTIFICATIONS IN ACCORDANCE WITH THE **60 CES/CEA SPILL RESPONSE GUIDE** USING THE **HAZARDOUS MATERIAL SPILL REPORT FORM** AND THE **AGENCY NOTIFICATION LOG** (PAGE RP- 12-14).

➤ REPORTABLE SPILLS ARE THOSE CONTACTING SOIL, ENTERING SURFACE WATERS OR WETLANDS OR ENTERING ANY STORM OR SANITARY SEWER DRAIN OR ANY RELEASE AT OR ABOVE THE REPORTABLE QUANTITY. CERCLA REPORTABLE QUANTITIES ARE LISTED IN THE **60 CES/CEA SPILL RESPONSE GUIDE**. SEE BASIC PLAN PARA 11.4 AND ANNEX B FOR DETAILED INSTRUCTIONS ON REPORTING REPORTABLE SPILLS. MANDATORY NOTIFICATIONS WILL BE MADE IMMEDIATELY AFTER DISCOVERY OF THE RELEASE.

- AS SOON AS POSSIBLE AFTER THE CONCLUSION OF THE EMERGENCY RESPONSE PHASE OF THE SPILL, THE FIRE DEPARTMENT SHALL COMPLETE THE "HAZARDOUS MATERIAL SPILL REPORT" IN ANNEX B OF THE **60 AMW ICP** AND SUBMIT IT TO THE ENVIRONMENTAL FLIGHT.



SPILL RESPONSE PROCEDURE DECISION CHART



Spill Classifications

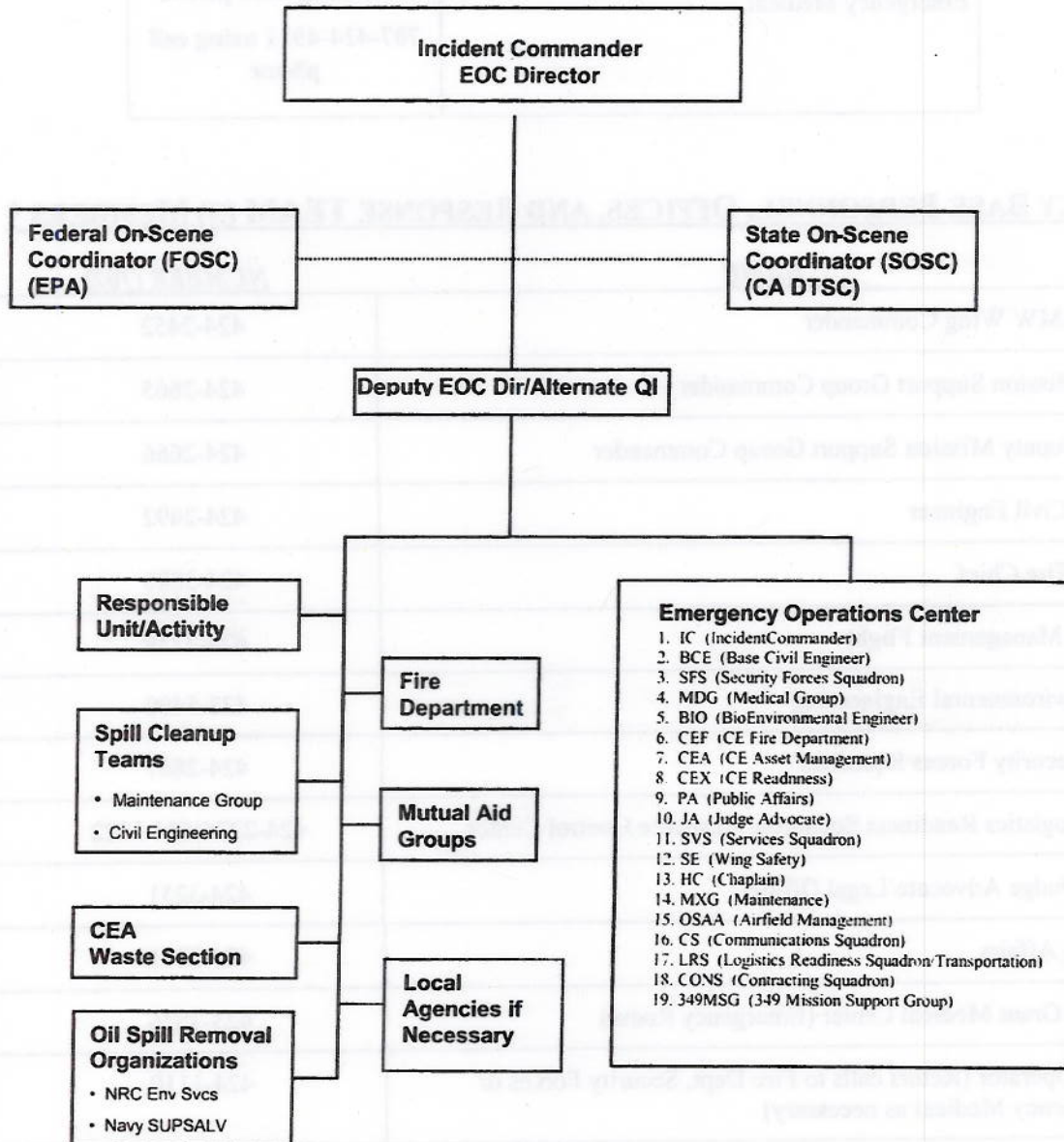
Class I: The incident can be controlled, cleaned up and disposed of by using organization. The spill is confined to a small area on pavement, inside a berm or building with no potential release to environment. Hazards and cleanup procedures are known and there are no injuries.

Class II: An incident beyond the using organization's capabilities. The incident presents a health hazard, injuries may be involved. The Spill impacts soil, utilities or water.

Class III: An incident involving a severe hazard or large area, which presents an extreme threat to life and property. Spill impacts soil, utilities, drains or water and is of a continuous nature.

Note: Refer to the 60 CES/CEA Spill Response Guide for comprehensive spill class information.

Travis AFB Organization for Spill Response



EMERGENCY NOTIFICATIONS LIST

ALL NUMBERS ARE AREA CODE (707) UNLESS LISTED OTHERWISE

<i>SERVICE</i>	<i>LOCAL</i>
Travis AFB Fire Department, Security Forces, Emergency Medical	911 using base phone 707-424-4911 using cell phone

KEY BASE PERSONNEL, OFFICES, AND RESPONSE TEAM (S) MEMBERS *

<i>NAME</i>	<i>NUMBER (707)</i>
60 th AMW Wing Commander	424-2452
60 th Mission Support Group Commander	424-2665
60 th Deputy Mission Support Group Commander	424-2666
Base Civil Engineer	424-2492
Base Fire Chief	424-3886
Asset Management Flight	424-3739
Bioenvironmental Engineering	423-5490
60 th Security Forces Squadron	424-2867
60 th Logistics Readiness Squadron, Resource Control Center	424-2274/424-1222
Staff Judge Advocate/Legal Officer	424-3251
Public Affairs	424-2011
David Grant Medical Center (Emergency Room)	423-3826
Base Operator (Refers calls to Fire Dept, Security Forces or Emergency Medical as necessary)	424-1110

* NOTE: Off-duty telephone numbers and points-of-contact for above listed personnel and office representatives are maintained at the Command Post at 424-5517.

OUTSIDE AGENCY NOTIFICATIONS **

Refer to 60 CES/CEA Spill Response Guide for notifications based on size/impact of spill.

<u>AGENCY</u>	<u>NUMBER</u>
National Response Center (NRC)	(800) 424-8802 (24 hrs)
California Office of Emergency Services Warning Center	(800) 852-7550 (24 hrs)
California Regional Water Quality Control Board -San Francisco Bay Region	(510) 622 - 2347 (510) 622-2460 (to fax report)
Solano County Department of Resource Management	784-6765 After hours 421-7090 (County Sheriff's dispatcher, 24 hrs)
California Dept. of Fish and Game	(916) 445-0045 (24 hrs)
United States Coast Guard - Sector San Francisco	(415) 556-2103 (24 hrs)
CA Department of Toxic Substances Control	(510) 540-2122
Fairfield-Suisun Sewer District	429-3233 (24 hrs)
Defense Energy Support Center - Los Angeles	(310) 900-6960
Defense Energy Support Center - Staff Duty Officer	(703) 767-8420 (24 hrs)
Headquarters, Air Mobility Command, Directorate of Civil Engineering, Environmental Programs Division, Quality Branch (HQ AMC/A7VQ)	(618) 229-0862 DSN 779-0862

**** NOTE: Only the QI or designee will contact outside agencies to report an oil or hazardous substance discharge at Travis AFB. Typically, 60 CES/CEA will be responsible for all off-Base notifications.**

SPILL CLEANUP CONTRACTOR NOTIFICATIONS

<u>CONTRACTOR</u>	<u>NUMBER</u>
NRC Environmental Services	(800) 337-7455 (24 hrs)
US Navy Supervisor of Salvage (SUPSALV) Via NAVSEA Duty Officer	(805) 982-4463 (703) 607-2758 (24 hrs)

PROTECTION PRIORITIES

THE FIRST PRIORITY IN ANY SPILL IS TO PROTECT HUMAN HEALTH AND SAFETY. AN OIL SPILL MAY DRAIN TO OUTFALLS LEADING TO UNION CREEK, WHICH IN TURN DRAINS TO SUISUN SLOUGH AND ULTIMATELY TO SUISUN BAY. THESE AREAS INCLUDE WETLANDS THAT MUST BE PROTECTED. ACTION MUST BE TAKEN TO ENSURE THE STORMWATER DRAINAGE SYSTEM AND DRAINAGE DITCHES ARE CONTROLLED OR BLOCKED WITH ABSORBENT MATERIALS OR BOOMS.

- SEE RP-11 FOR A DIAGRAM SHOWING OUTFALLS AND ASSOCIATED DRAINAGE AREAS. PERSONNEL WILL DEPLOY BOOMS AND CONTAINMENT MEASURES AT THE APPROPRIATE OUTFALL FOR RELEASES THAT ENTER THE STORM DRAIN SYSTEM.

SPILL HAZARDS

ONLY TRAINED RESPONSE PERSONNEL WILL CONDUCT SPILL RECOVERY OPERATIONS. FUELS ARE RELATIVELY VOLATILE. LARGE SPILLS MAY RESULT IN SIGNIFICANT VAPOR GENERATION POSING A FIRE OR EXPLOSION HAZARD. IGNITION SOURCES IN THE AREA OF THE SPILL MUST BE CONTROLLED OR ELIMINATED. SPECIAL SPARK-FREE AND EXPLOSION-PROOF EQUIPMENT WILL BE USED TO RECOVER POOLED OR CONTAINED FUELS.

RESPONSE TRAINING

- ALL PERSONNEL WHO HAVE RESPONSIBILITIES FOR HANDLING OIL OR HAZARDOUS SUBSTANCES MUST COMPLETE AWARENESS TRAINING AND BASIC SPILL RESPONSE TRAINING. FIRE DEPARTMENT AND SPILL RESPONSE TEAM PERSONNEL ARE TRAINED TO HANDLE SPILLS AND HAVE ACCESS TO THE REQUIRED EQUIPMENT. REFER TO APPENDIX M OF THE 60 AMW ICP FOR A DETAILED DISCUSSION OF TRAINING AND EXERCISE REQUIREMENTS.

INSTALLATION RESPONSE EQUIPMENT AND LOCATIONS

EQUIPMENT FOR CONTAINMENT AND RECOVERY OF DISCHARGES AND TO PROTECT PERSONNEL IS AVAILABLE AT MOST STORAGE AND HANDLING LOCATIONS. THE FIRE DEPARTMENT AND RESPONSE TEAMS ALSO MAINTAIN RESPONSE EQUIPMENT. THE FOLLOWING ABBREVIATED LIST IS PROVIDED IN MORE DETAIL IN ANNEX F OF THE 60 AMW ICP.

<i>EQUIPMENT ITEMS</i>	<i>LOCATION/RESPONSIBLE ORGANIZATION</i>
Personal Protective Equipment, Absorbent Materials, Tools, Overpack Containers for Disposal	Fuel Handling Units/Activities
Spill Response Trailer with miscellaneous Support Equipment	Fire Department
Heavy Equipment to support a response (trucks, loaders, pumps, compressors, etc)	Civil Engineer Squadron
Personal Protective Equipment,	Maintenance Group Spill Trailer

<i>EQUIPMENT ITEMS</i>	<i>LOCATION/RESPONSIBLE ORGANIZATION</i>
Absorbent Materials, Tools. Overpack Containers for Disposal	Civil Engineer Squadron Spill Trailer
Personal Protective Equipment, Absorbent Materials, Tools, Sorbent Booms, Product Recovery Equipment	Union Creek Outfall I Union Creek Outfall II Union Creek Outfall IV (Civil Engineer Squadron is responsible for all assets located at outfalls)

COMMUNICATIONS AND ALARM SYSTEMS

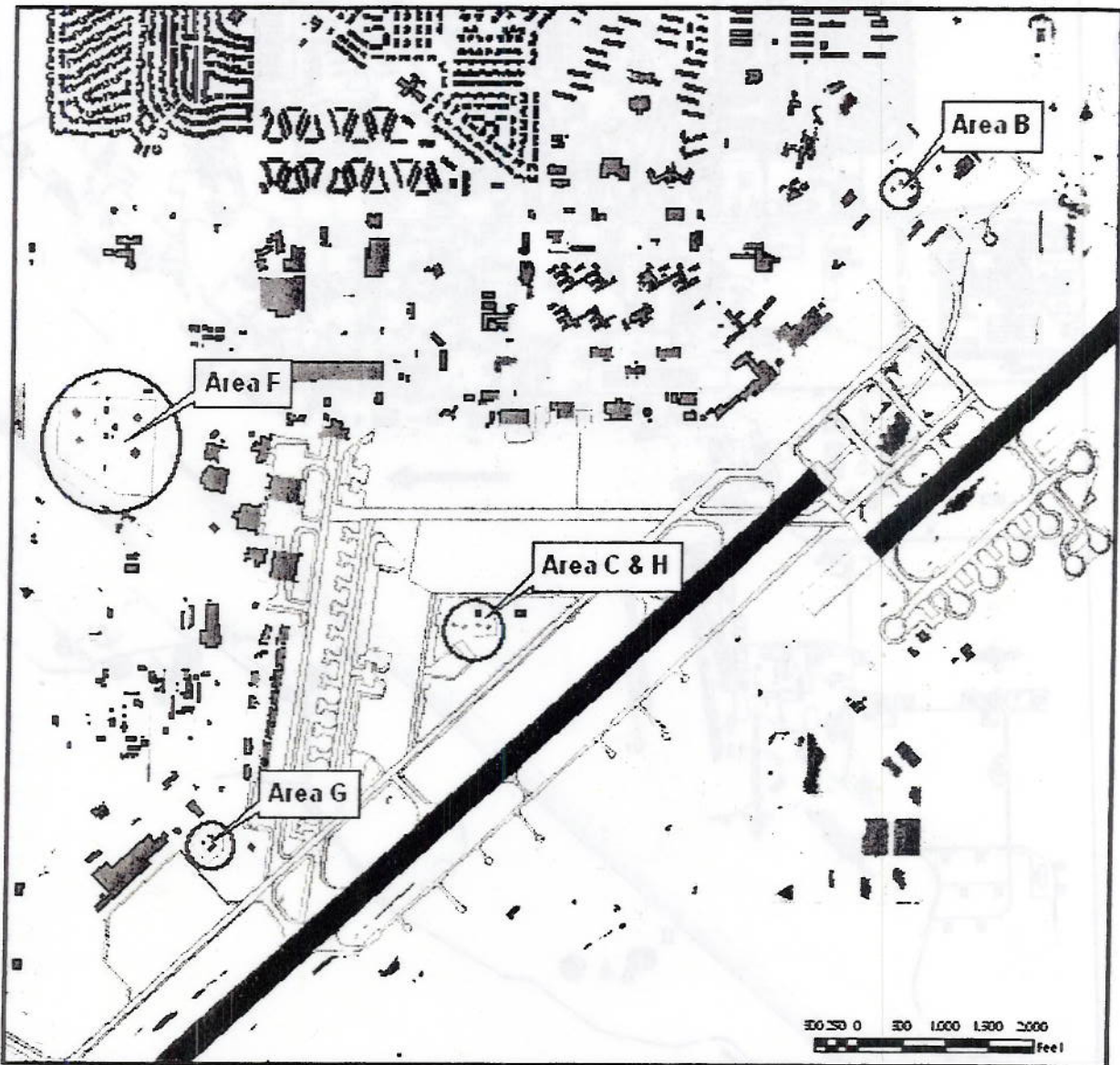
COMMUNICATION SYSTEMS ARE EXTENSIVE AND ALLOW THE FIRE DEPARTMENT, EMERGENCY MEDICAL PERSONNEL, AND SECURITY FORCES TO BE FULLY FUNCTIONAL ON A 24-HOUR BASIS. BOTH THE FIRE DEPARTMENT AND SECURITY FORCES HAVE MULTI-CHANNEL RADIO CAPABILITY AUGMENTED BY CELLULAR TELEPHONES, WITH BACKUP TELEPHONE AND RADIO SYSTEMS AT THEIR DISPATCH CENTERS.

FIRE ALARM PULL BOXES ARE LOCATED THROUGHOUT THE INSTALLATION IN BUILDINGS AND AT KEY OPERATIONAL SITES FOR USE IN EMERGENCIES TO ALERT THE FIRE DEPARTMENT.









EVACUATION PLAN

SINCE THERE ARE SIGNIFICANT QUANTITIES OF JP-8, DIESEL FUEL, GASOLINE, AND HAZARDOUS SUBSTANCES STORED AT VARIOUS LOCATIONS, THE IC MAY DETERMINE THAT AN EVACUATION IS NECESSARY. REFER TO ANNEX C OF THE *60 AMW ICP* FOR A COMPLETE DISCUSSION OF EVACUATIONS.



WHEN DIRECTED BY THE IC, THE SECURITY FORCES WILL INITIATE EVACUATION OF BASE PERSONNEL AND RESIDENTS AND CONDUCT TRAFFIC CONTROL AS REQUIRED. LARGE-SCALE EVACUATIONS WILL BE CARRIED-OUT IN ACCORDANCE WITH THE *60TH AMW COMPREHENSIVE EMERGENCY MANAGEMENT PLAN 10-2 2007*. LOCALIZED EVACUATIONS WILL BE CONDUCTED IN ACCORDANCE WITH PROCEDURES ESTABLISHED BY THE UNIT/ACTIVITY WHERE THE INCIDENT OCCURRED. GENERAL EVACUATION ROUTES ARE SHOWN IN ANNEX C OF THE *60 AMW ICP*.

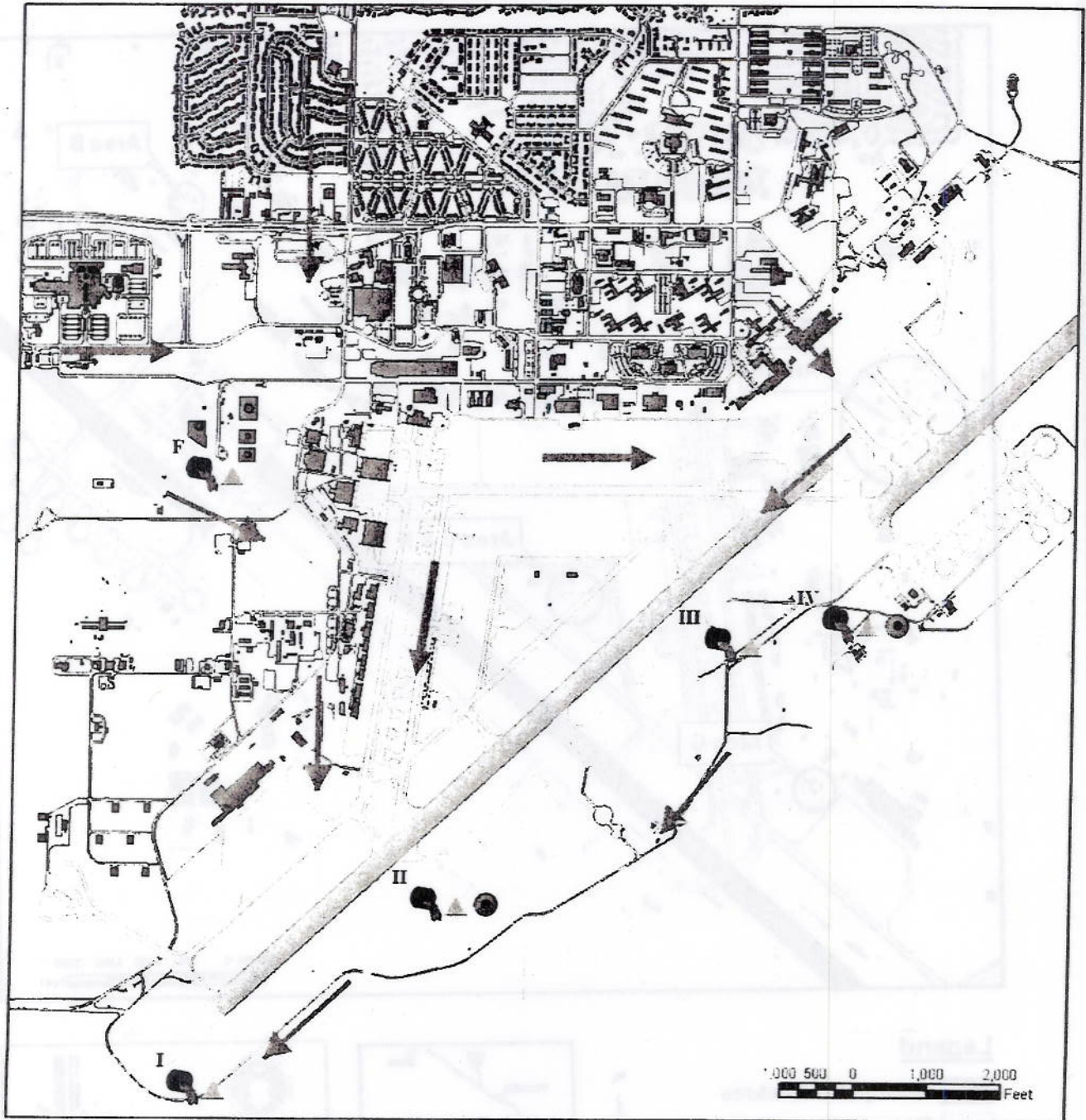


Legend

-  Buildings and Structures
-  Ramps, Taxiways, & Over Runs
-  Runway
-  Installation Boundary
-  Roads
-  Preserve Area
-  Wetland Area
-  Major Bulk Storage Sites

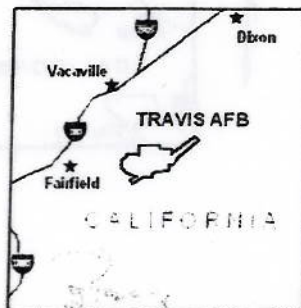


	
TRAVIS AFB MAJOR BULK STORAGE SITES	
Figure 2	DATE: 02/11/2008



Legend

- Buildings and Structures
- Blast Fence
- Ramps, Taxiways, & Over Runs
- Runway
- Installation Boundary
- Roads
- General Drainage Direction
- Outfall
- Spill Equipment Locker
- Mechanical Spillmer



<p>TRAVIS AFB GENERAL DRAINAGE, OUTFALLS AND RESPONSE EQUIPMENT</p>	
<p>Project: 161R-DATA/CP-5_Mch/04TRAB/DP/actb1 Travis Drainage Outfalls Response Fig. A-2.mxd</p>	
<p>FIGURE A-2</p>	<p>DATE 06/01/2004</p>

HAZARDOUS MATERIAL SPILL REPORT

Complete this form and deliver to 60 CES/CEA. Fax: 707-424-5105. Note: All times to be entered as military time (24 hour clock).

NOTIFICATION/DESCRIPTION

1. INFORMATION SUPPLIED BY (Name, Rank, Duty Phone)

2. ORGANIZATION (Office Symbol, Address)

3. TIME OF SPILL (Time, Date Year)

4. LOCATION OF SPILL (Building, Parking Spot, Aircraft Tail Number)

5. TYPE OF MATERIAL SPILLED (JP-8, Oil, Solvent, Etc)

6. QUANTITY (Estimate)

7. SPILL CLASS (I, II, III)

8. DESCRIPTION OF INCIDENT INCLUDING CAUSE OF SPILL (Use attached continuation sheet if necessary).

RESPONSE

9. FIRE DEPARTMENT ARRIVAL TIME

10. FIRE DEPARTMENT DEPARTURE TIME

11. INCIDENT COMMANDER

12. BIOENVIRONMENTAL

13. ENVIRONMENTAL FLIGHT

14. OTHER

15. SPILL CLEANUP TEAM SUPERVISOR

16. SPILL CLEANUP START TIME

17. SPILL CLEANUP COMPLETION TIME

18. MATERIALS USED FOR CLEANUP

19. SPILL QUANTITY RECOVERED

20. QUANTITY NOT RECOVERED

21. DESCRIBE CLEANUP ACTIONS TAKEN (Use attached continuation sheet if necessary).

22. DESCRIBE ANY UTILITY (Storm/Sewer Drain), SOIL OR WATER IMPACTED. (Use attached continuation sheet if necessary).

23. TOTAL QUANTITY OF WASTE DISPOSED

24. DISPOSAL LOCATION

25. NAME (S) OF ANY INJURED PERSONNEL

26. DESCRIBE ANY OCCURENCES OF INJURIES OR EXPOSURE (Use attached continuation sheet if necessary).

27. DESCRIBE CORRECTIVE AND PREVENTIVE ACTIONS TAKEN (Use attached continuation sheet if necessary).

HAZARDOUS MATERIAL SPILL REPORT
CONTINUATION SHEET

DESCRIPTION OF INCIDENT

DESCRIPTION OF CLEANUP ACTIONS TAKEN

INJURIES OR EXPOSURE

CORRECTIVE/PREVENTATIVE ACTIONS

AGENCY NOTIFICATION LOG

AGENCY	PERSON NOTIFIED OR LEFT MESSAGE	TIME	DATE	COMMENTS/INSTRUCTIONS
National Response Center 800 - 424 - 8802 (24 hrs)				
CA OES 800-852-7550 (24 hrs)				
CA RWQCB - SF Bay Region: 510-622-2347 510-622-2460 (Fax report)				
Solano County Dept. of Resource Mgmt: 707-784-6765 After regular business hours: 707-421-7090 (County Sheriff's dispatch center, 24 hrs)				
CA Fish and Game: 916-445-0045 (24 hrs)				
USCG Sector San Francisco 415-556-2103 (24 hrs)				
DTSC: 510-540-2122				
FSSD: 707-429-3233 (24 hrs)				
DESC Los Angeles (310) 900-6960				
DESC Staff Duty Officer 703-767-8420 (24 hrs)				
HQ AMC A7VQ DSN 779-0862 or 618-229-0862				
NRC Environmental Services 800-337-7455 CA Office in Alameda 510-749-1390				
US Navy SupSalvage 703-607-2758				

CLEAN UP PROCEDURES

1. Provided are clean up procedures for various types of hazardous materials. These procedures apply after initial hazards and types of materials involved have been identified and containment and control have been established.

2. If sufficient material has been released to necessitate pumping into a container, tank or tank truck, pumping shall be accomplished by properly trained individuals from the Spill Team or the spill response contractor.

3. Prior to beginning clean up ensure:

a. Proper personal protective equipment (PPE) has been identified in consultation with 60 AMDS/SGPB and is available on site.

b. Proper containers for wastes are available for all types of wastes that will be generated.

NOTE: Compatibility of wastes generated as a result of clean up activities shall be determined to ensure proper containerization and disposal.

NOTE: No wastes shall leave the facility until all waste characterization is complete. Characterization shall be as directed and approved by 60 CES/CEV.

c. New or properly decontaminated clean up equipment is available. Equipment is available on site (Table 1) or will be provided by the Spill Team or spill response contractor.

4. All contaminated PPE and clean up equipment shall be disposed as waste or properly decontaminated. Decontaminate equipment as directed by 60 CES/CEV and 60 AMDS/SGPB. All waste water and other residues and materials generated as a result of decontamination shall be captured, containerized and characterized for disposal.

5. All waste containers shall be stored on site if possible or relocated to the 90-day hazardous waste disposal facility until characterization and removal from Base for disposal are complete.

FLAMMABLES

➤ Flammables includes: Jet Fuel, Gasoline, Diesel, Petroleum Solvents, Alcohol, Petroleum Based Paints/Resin Coatings, Hydraulic Fluid, Lube Oils

- If the spill is from one or more of the jet fuel or used oil storage tanks into a secondary containment area, all material shall be removed from the containment area prior to beginning clean up actions described below.
- If the spill is the result of a failure or leak in the primary storage tank, all remaining waste in the affected tank shall be completely removed.

1. Flammable material spills will evaporate rapidly, increasing in rate with temperature increase. Therefore, the risk of fire or explosion and the toxic exposure may be high until vapors disperse. Flammable material spills in areas where flammable vapors can accumulate shall be monitored and cleared for entry by 60 AMDS/SGPB.

2. Don PPE in accordance with MSDSs, NIOSH Guide or as directed by the Fire Dept. and/or 60 AMDS/SGPB.

3. When safe to do so, place absorbents around and on the spill in such a manner as to prevent the spread of the spill, indicate its boundaries, and reduce vaporization.

4. Use an appropriate solvent and absorbent wipes to clean contaminated equipment and vertical surfaces. If the situation involves water and oil, first use oil-only absorbing materials to remove oil from the water as much as possible. Absorb, wipe/mop up and/or pump remaining oily water into drums or portable tanks. If soil has been contaminated, excavate to sufficient area and depth to remove all contamination. Coordinate with 60 CES/CEV to ensure removal of all contaminated soil. Use non-sparking tools and equipment to collect soaked absorbents, pump liquids and collect soil as necessary. Apply absorbent as many times as necessary to completely remove all residues.

5. Place all waste materials into approved and properly labeled containers and manage as hazardous waste until directed otherwise by 60 CES/CEV.

MERCURY

1. Mercury vaporizes in ambient air and vaporization rate increases as temperature increases. It is considered extremely toxic, is difficult to contain and control and must be handled with proper care. Mercury spills in areas where vapors can accumulate should be monitored and cleared for entry by 60 AMDS/SGPB.

2. Don PPE in accordance with NIOSH Guide or as directed by the Fire Dept. and/or 60 AMDS/SGPB.

3. Since mercury will split into small droplets and roll, survey the area to ensure all spilled mercury has been located. Surround and/or contain the area if necessary to prevent any further movement of mercury droplets. If appreciable elemental mercury is visible or if vapors above the permissible exposure limit are detected, apply mercury vapor absorbent to the spill.

4. Sweep up any powder, broken glass or compound. Vacuum the area with a mercury vacuum or apply mercury vapor absorbent to the area and sweep up residue. Mercury vapor absorbent may be mixed with water and used to wipe or mop spill areas. Continue vacuuming and/or cleaning with absorbent until vapors below the permissible exposure limit are verified by 60 AMDS/SGPB. If soil has been contaminated, excavate to sufficient area and depth to remove all contamination. Coordinate with 60 CES/CEV to ensure removal of all contaminated soil.

5. Place all waste materials into approved and properly labeled containers and manage as hazardous waste until directed otherwise by 60 CES/CEV.

PESTICIDES, INSECTICIDES

LIQUID SPILLS

1. Don PPE in accordance with MSDSs, NIOSH Guide or as directed by the Fire Dept. and/or 60 AMDS/SGPB.
2. When safe to do so, place absorbents around and on the spill in such a manner as to prevent the spread of the spill, indicate its boundaries, and reduce vaporization.
3. Wash contaminated equipment and vertical surfaces and other contaminated areas carefully with water and detergent. If soil has been contaminated, excavate to sufficient area and depth to remove all contamination. Coordinate with 60 CES/CEV to ensure removal of all contaminated soil. If flammable or combustible insecticide is present, use non-sparking tools and equipment to collect soaked absorbents and collect soil as necessary. Wash and/or apply absorbent as many times as necessary to completely remove all residues.
4. Place all waste materials into approved and properly labeled containers and manage as hazardous waste until directed otherwise by 60 CES/CEV.

SOLID SPILLS

1. Don PPE in accordance with MSDSs, NIOSH Guide or as directed by the Fire Dept. and/or 60 AMDS/SGPB.
2. If dust is a hazard, moisten with a liquid (water or other solvent) to prevent the spread of dust particulates. The liquid must be selected based on the reactivity of the spilled solid. Block any nearby drains and otherwise prevent run off from the affected area prior to moistening.
3. Clean up with dustpans, shovels and brooms as necessary. It may be necessary to vacuum the area to clean up material in hard to access areas (under surfaces, in pavement cracks, etc). Use a high efficiency particulate filter vacuum for this purpose.
4. Place waste materials plastic bags, and into approved and properly labeled containers and manage as hazardous waste until directed otherwise by 60 CES/CEV

MODERATE TOXICS

➤ Includes are Latex Paints, Paint Strippers and Ethylene Glycol

1. Don PPE in accordance with MSDSs, NIOSH Guide or as directed by the Fire Dept. and/or 60 AMDS/SGPB.
2. When safe to do so, place absorbents around and on the spill in such a manner as to prevent the spread of the spill, indicate its boundaries, and reduce vaporization.
3. Use brooms and shovels as necessary to clean up soaked absorbents. If necessary, use an appropriate solvent or wash contaminated equipment and vertical surfaces with soap and water. If the situation involves contaminated water, absorb, wipe/mop up and/or pump water into drums or portable tanks. If soil has been contaminated, excavate to sufficient area and depth to remove all contamination. Coordinate with 60 CES/CEV to ensure removal of all contaminated soil. Apply absorbent as many times as necessary to completely remove all residues.
4. Place all waste materials into approved and properly labeled containers and manage as hazardous waste until directed otherwise by 60 CES/CEV.

CORROSIVES

LIQUID ACID SPILLS

1. Don PPE in accordance with MSDSs, NIOSH Guide or as directed by the Fire Dept. and/or 60 AMDS/SGPB.
2. If safe to do so, place absorbent materials around and on the spill in such a manner as to prevent the spread of the spill, indicate its boundaries, and reduce fuming by covering the surface.
3. Cleanup methods:
 - a. Liquid neutralizer method: Absorb excess acid liquid using polypropylene pads. If absorption is slow because of the viscosity of the spilled material, careful application of a minimum amount of liquid acid neutralizer to the spill boundary will enhance absorption. Neutralize remaining acid residue with liquid acid neutralizer until analysis with pH paper indicates a final pH reading in the range of 6 to 10. Absorb all free liquid and cleanup residue.
 - b. Sodium Bicarbonate neutralizer method: Dike and contain released liquid with solid neutralizer. Spread sufficient material over the spill to cover the surface with a light coating. Mix neutralizer sufficiently with the acid to effect absorption of all free liquid. If necessary, a small quantity of water may be added to cool the slurry or increase the rate of neutralization. Monitor progress of the neutralization reaction using pH paper until a final pH reading in the range of 6 to 10 is obtained. Absorb all free liquid and cleanup residue.
4. Wash the area with a soap and water solution after the neutralization process is complete. If floor tiles or equipment are involved, examine all surfaces and hidden areas for free liquid or residual contamination. Block any nearby drains and otherwise prevent run off from the affected area prior to washing. If soil has been contaminated, excavate to sufficient area and depth to remove all contamination. Coordinate with 60 CES/CEV to ensure removal of all contaminated soil.
5. Place all waste materials into approved and properly labeled containers and manage as hazardous waste until directed otherwise by 60 CES/CEV

LIQUID CAUSTIC SPILLS

1. Don PPE in accordance with MSDSs, NIOSH Guide or as directed by the Fire Dept. and/or 60 AMDS/SGPB.

2. If safe to do so, place absorbent materials around and on the spill in such a manner as to prevent the spread of the spill, indicate its boundaries, and reduce fuming by covering the surface.

3. Cleanup methods:

a. Liquid neutralizer method: Absorb excess caustic liquid using polypropylene pads. If absorption is slow because of the viscosity of the spilled material, careful application of a minimum amount of liquid neutralizer to the spill boundary will enhance absorption. Neutralize remaining caustic residue with liquid neutralizer until analysis with pH paper indicates a final pH reading in the range of 6 to 10. Absorb all free liquid and cleanup residue.

b. Solid Citric Acid neutralizer method: Dike and contain released liquid with solid neutralizer. Spread sufficient material over the spill to cover the surface with a light coating. Mix neutralizer sufficiently with the caustic to effect absorption of all free liquid. If necessary, a small quantity of water may be added to cool the slurry or increase the rate of neutralization. Monitor progress of the neutralization reaction using pH paper until a final pH reading in the range of 6 to 10 is obtained. Absorb all free liquid and cleanup residue.

4. Wash the area with a soap and water solution after the neutralization process is complete. If floor tiles or equipment are involved, examine all surfaces and hidden areas for free liquid or residual contamination. Block any nearby drains and otherwise prevent run off from the affected area prior to washing. If soil has been contaminated, excavate to sufficient area and depth to remove all contamination. Coordinate with 60 CES/CEV to ensure removal of all contaminated soil.

5. Place all waste materials into approved and properly labeled containers and manage as hazardous waste until directed otherwise by 60 CES/CEV

SOLID CAUSTIC SPILLS

1. Don PPE in accordance with MSDSs, NIOSH Guide or as directed by the Fire Dept. and/or 60 AMDS/SGPB.

2. Spills of solid caustic can be cleaned-up with a dustpan or shovel and broom or by using a high efficiency particulate filter vacuum. Neutralize remaining caustic residue with liquid neutralizer until analysis with pH paper indicates a final pH reading in the range of 6 to 10. Absorb all free liquid and cleanup residue.

NOTE: It may be necessary to wet the caustic prior to cleanup to reduce dusting. **DO NOT USE** water for this purpose. Use a non-reactive, viscous liquid such as ethylene glycol. Consult with 60 AMDS/SGPB first if wetting appears necessary

4. Wash the area with a soap and water solution after the neutralization process is complete. If floor tiles or equipment are involved, examine all surfaces and hidden areas for free liquid or residual contamination. Block any nearby drains and otherwise prevent run off from the affected area prior to washing. If soil has been contaminated, excavate to sufficient area and depth to remove all contamination. Coordinate with 60 CES/CEV to ensure removal of all contaminated soil.

5. Place all waste materials into approved and properly labeled containers and manage as hazardous waste until directed otherwise by 60 CES/CEV.

HAZARDOUS MATERIAL SPILL REPORT

Complete this form and deliver to 60 CES/CEV. Fax: 707-424-5105. Note: All times to be entered as military time (24 hour clock).

NOTIFICATION/DESCRIPTION

1. INFORMATION SUPPLIED BY (Name, Rank, Duty Phone)

2. ORGANIZATION (Office Symbol, Address)

3. TIME OF SPILL (Time, Date Year)

4. LOCATION OF SPILL (Building, Parking Spot, Aircraft Tail Number)

5. TYPE OF MATERIAL SPILLED (JP-8, Oil, Solvent, Etc)

6. QUANTITY (Estimate)

7. SPILL CLASS (I, II, III)

8. DESCRIPTION OF INCIDENT INCLUDING CAUSE OF SPILL (Use attached continuation sheet if necessary).

RESPONSE

9. FIRE DEPARTMENT ARRIVAL TIME

10. FIRE DEPARTMENT DEPARTURE TIME

11. INCIDENT COMMANDER

12. BIOENVIRONMENTAL

13. ENVIRONMENTAL FLIGHT

14. OTHER

15. SPILL CLEANUP TEAM SUPERVISOR

16. SPILL CLEANUP START TIME

17. SPILL CLEANUP COMPLETION TIME

18. MATERIALS USED FOR CLEANUP

19. SPILL QUANTITY RECOVERED

20. QUANTITY NOT RECOVERED

21. DESCRIBE CLEANUP ACTIONS TAKEN (Use attached continuation sheet if necessary).

22. DESCRIBE ANY UTILITY (Storm/Sewer Drain), SOIL OR WATER IMPACTED. (Use attached continuation sheet if necessary).

23. TOTAL QUANTITY OF WASTE DISPOSED

24. DISPOSAL LOCATION

25. NAME (S) OF ANY INJURED PERSONNEL

26. DESCRIBE ANY OCCURENCES OF INJURIES OR EXPOSURE (Use attached continuation sheet if necessary).

27. DESCRIBE CORRECTIVE AND PREVENTIVE ACTIONS TAKEN (Use attached continuation sheet if necessary).

HAZARDOUS MATERIAL SPILL REPORT
CONTINUATION SHEET

DESCRIPTION OF INCIDENT

DESCRIPTION OF CLEANUP ACTIONS TAKEN

INJURIES OR EXPOSURE

CORRECTIVE/PREVENTATIVE ACTIONS