

**GROUND-WATER DATA COLLECTED AT SPECIAL-STUDY SITES  
DELAWARE RIVER BASIN NAWQA PROJECT**

**GROUND WATER IN THE CLASTIC BEDROCK WITHIN THE VALLEY AND RIDGE PHYSIOGRAPHIC PROVINCE**

The following tables contain site, water-level, and water-quality data from a network of 30 domestic and observation wells. The network was established as part of the National Water-Quality Assessment (NAWQA) Program in the Delaware River Basin (DELR).

The wells were sampled to assess the status of ground-water quality in the clastic bedrock of the Valley and Ridge Physiographic Province. Samples were tested for field parameters, nutrients, major ions, trace elements, dissolved and volatile organic compounds (VOCs), pesticides (including their metabolites), radioisotopes, and selected bacteriological parameters. Many VOCs and pesticide constituents were not detected at any of the 30 wells.

Tables listing all of the VOC and pesticide schedule analytes and their reporting levels are on pages 463-466. Only VOCs and pesticide compounds measured at or above the reporting levels at one or more sites (either surface water or ground water) of the DELR NAWQA Project are listed in the water-quality table.

GROUND-WATER DATA COLLECTED AT SPECIAL-STUDY SITES  
DELAWARE RIVER BASIN NAWQA PROJECT

GROUND WATER IN THE CLASTIC BEDROCK WITHIN THE VALLEY AND RIDGE PHYSIOGRAPHIC PROVINCE

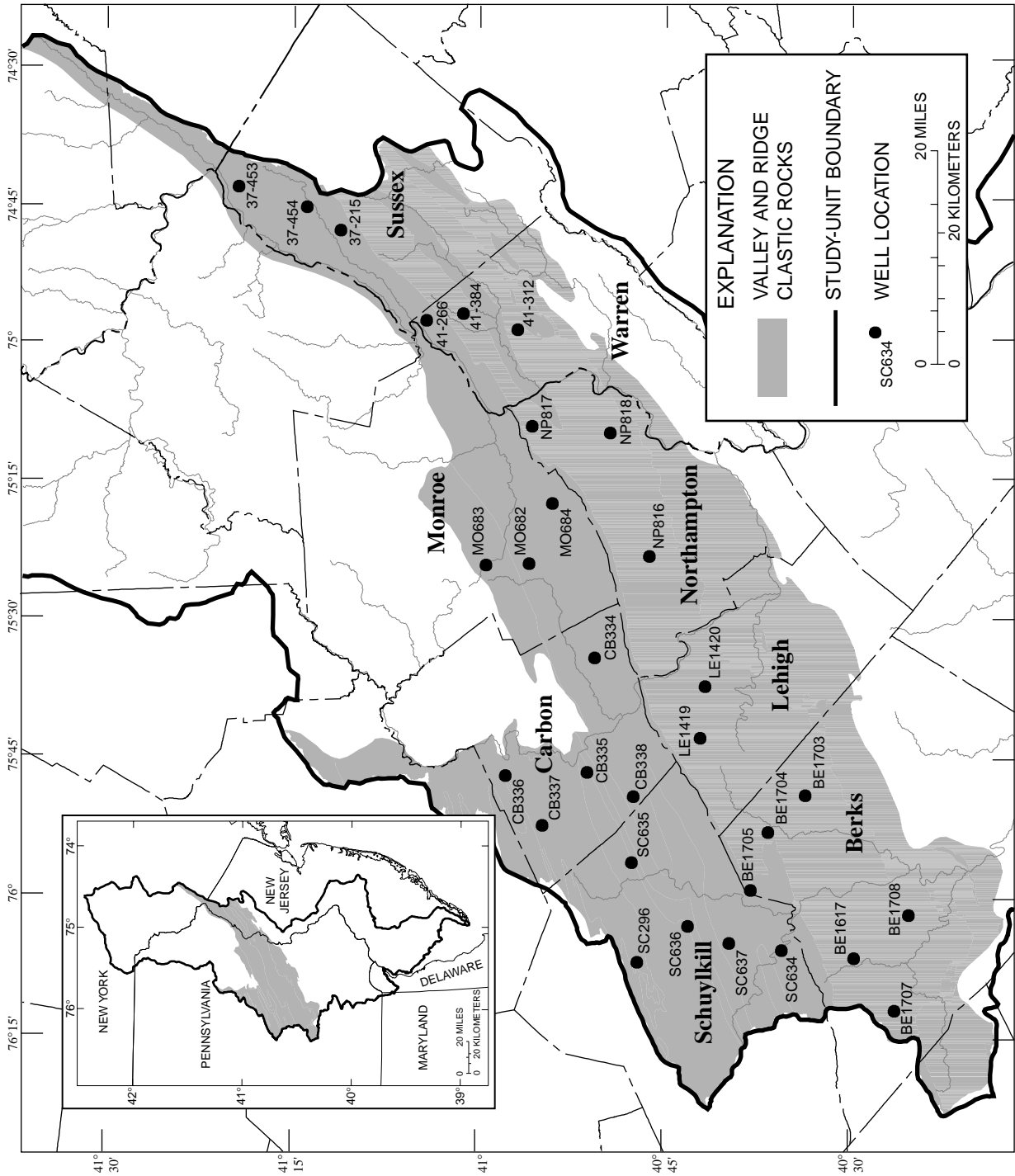


Figure 18.--Location of Delaware River Basin National Water-Quality Assessment Program ground-water sampling sites in the Clastic Bedrock within the Valley and Ridge Physiographic Province.

**GROUND-WATER DATA COLLECTED AT SPECIAL-STUDY SITES  
DELAWARE RIVER BASIN NAWQA PROJECT**

**GROUND WATER IN THE CLASTIC BEDROCK WITHIN THE VALLEY AND RIDGE PHYSIOGRAPHIC PROVINCE**

WATER-QUALITY DATA, WATER YEAR OCTOBER 1999 TO SEPTEMBER 2000

LOCAL ID	STATION NUMBER	DATE	TIME	SAMPLE TYPE	AGENCY ANA-LYZING SAMPLE (CODE NUMBER) (00028)	AGENCY COL-LECTING SAMPLE (CODE NUMBER) (00027)	ELEV. OF LAND SURFACE DATUM (FT. ABOVE NGVD) (72000)	DEPTH OF WELL, TOTAL (FEET) (72008)
BERKS COUNTY PA								
BE 1617	402939076062701	07-11-00	1200	ENVIRONMENTAL	80020	1028	560	128.00
BE 1703	403342075485901	05-08-00	1100	ENVIRONMENTAL	80020	1028	560	120.00
BE 1704	403640075530001	05-23-00	1200	ENVIRONMENTAL	80020	1028	500	300.00
BE 1705	403803075591401	07-18-00	1200	ENVIRONMENTAL	80020	1028	1300	245.00
BE 1707	402622076120201	06-20-00	1200	ENVIRONMENTAL	80020	1028	550	90.00
		06-20-00	1201	REPLICATE	80020	1028	550	90.00
		06-20-00	1210	REPLICATE	80020	1028	550	90.00
BE 1708	402517076014701	06-22-00	1200	ENVIRONMENTAL	80020	1028	400	175.00
CARBON COUNTY PA								
CB 334	405046075341901	05-10-00	1200	ENVIRONMENTAL	80020	1028	1030	440.00
CB 335	405118075464101	06-13-00	1100	ENVIRONMENTAL	80020	1028	1060	220.00
		06-13-00	1101	REPLICATE	80020	1028	1060	220.00
CB 336	405754075470401	06-15-00	1100	ENVIRONMENTAL	80020	1028	1280	88.00
CB 337	405453075522601	07-10-00	1300	ENVIRONMENTAL	80020	1028	1240	500.00
		07-10-00	1301	REPLICATE	80020	1028	1240	500.00
CB 338	404734075491601	07-12-00	1200	ENVIRONMENTAL	80020	1028	620	150.00
		07-12-00	1201	REPLICATE	80020	1028	620	150.00
		07-12-00	1204	REPLICATE	80020	1028	620	150.00
LEHIGH COUNTY PA								
LE 1419	404212075425401	05-22-00	1200	ENVIRONMENTAL	80020	1028	615	220.00
LE 1420	404150075371901	05-24-00	1200	ENVIRONMENTAL	80020	1028	710	130.00
MONROE COUNTY PA								
MO 682	405605075240901	05-15-00	1200	ENVIRONMENTAL	80020	1028	970	340.00
MO 683	405934075242001	05-16-00	1100	ENVIRONMENTAL	80020	1028	1120	160.00
MO 684	405414075174001	06-12-00	1400	ENVIRONMENTAL	80020	1028	760	260.00
NORTHAMPTON COUNTY PA								
NP 816	404624075232001	05-09-00	1100	ENVIRONMENTAL	80020	1028	840	150.00
NP 817	405552075091901	05-11-00	1200	ENVIRONMENTAL	80020	1028	800	200.00
		05-11-00	1201	REPLICATE	1028	1028	800	200.00
		05-11-00	1210	REPLICATE	1028	1028	800	200.00
NP 818	404935075100201	06-14-00	1200	ENVIRONMENTAL	80020	1028	740	260.00
SCHUYLKILL COUNTY PA								
SC 296	404708076070701	04-26-00	1400	ENVIRONMENTAL	80020	1028	1290	242.00
SC 634	403529076054201	04-25-00	1300	ENVIRONMENTAL	80020	1028	540	120.00
SC 635	404740075562301	04-27-00	1200	ENVIRONMENTAL	80020	1028	1030	306.00
SC 636	404306076031101	06-19-00	1200	ENVIRONMENTAL	80020	1028	1060	314.00
SC 637	403944076045901	06-21-00	1100	ENVIRONMENTAL	80020	1028	660	164.00
		06-21-00	1101	REPLICATE	80020	1028	660	164.00

**GROUND-WATER DATA COLLECTED AT SPECIAL-STUDY SITES  
DELAWARE RIVER BASIN NAWQA PROJECT**

**GROUND WATER IN THE CLASTIC BEDROCK WITHIN THE VALLEY AND RIDGE PHYSIOGRAPHIC PROVINCE**

WATER-QUALITY DATA, WATER YEAR OCTOBER 1999 TO SEPTEMBER 2000

LOCAL ID	DEPTH BELOW LAND SURFACE (WATER LEVEL) (FEET) (72019)	OXYGEN, DIS- SOLVED (MG/L) (00300)	PH WATER WHOLE FIELD (STAND- ARD UNITS) (00400)	SPE- CIFIC CON- DUCT- ANCE (µS/CM) (00095)	TEMPER- ATURE WATER (DEG C) (00010)	HARD- NESS TOTAL (MG/L AS CACO3) (00900)	CALCIUM DIS- SOLVED (MG/L AS CA) (00915)	MAGNE- SIUM, DIS- SOLVED (MG/L AS MG) (00925)	POTAS- SIUM, DIS- SOLVED (MG/L AS K) (00935)	SODIUM, DIS- SOLVED (MG/L AS NA) (00930)
BERKS COUNTY PA										
BE 1617	75.70	2.1	7.5	197	15.8	83	22.8	6.32	.6	6.5
BE 1703	29.20	9.3	7.7	323	13.6	140	42.4	8.83	.6	3.9
BE 1704	47.68	6.0	7.4	168	12.2	78	25.3	3.45	.6	3.7
BE 1705	75.65	6.1	5.3	18	13.0	5	.51	.95	.3	.9
BE 1707	41.48	4.6	6.8	195	15.0	92	5.86	18.7	.6	5.1
	41.48	4.6	6.8	195	15.0	93	6.04	18.8	.7	5.2
BE 1708	41.48	4.6	6.8	195	15.0	--	--	--	--	--
	15.26	.2	7.9	269	14.6	120	40.2	5.34	.8	4.8
CARBON COUNTY PA										
CB 334	105.11	6.6	7.3	183	12.2	83	22.5	5.32	.3	5.0
CB 335	78.55	9.0	5.8	35	12.2	14	4.29	.80	.3	1.3
	78.55	9.0	5.8	35	12.2	--	--	--	--	--
CB 336	74.00	7.3	5.3	49	13.4	13	2.76	1.51	.7	3.6
CB 337	25.74	9.2	5.6	137	14.2	51	15.2	3.05	.6	2.7
	25.74	9.2	5.6	137	14.2	--	--	--	--	--
CB 338	--	.2	7.6	122	14.2	52	14.5	3.67	E.2	4.8
	--	.2	7.6	122	14.2	--	--	--	--	--
	--	.2	7.6	122	14.2	--	--	--	--	--
LEHIGH COUNTY PA										
LE 1419	7.69	<.2	8.0	297	11.8	130	38.9	8.97	.6	6.9
LE 1420	57.15	4.0	7.4	271	15.2	130	38.7	8.43	.4	7.6
MONROE COUNTY PA										
MO 682	87.49	5.7	6.2	144	12.6	46	10.4	4.83	.5	8.5
MO 683	55.95	9.4	5.1	82	11.0	22	3.81	2.93	.7	5.0
MO 684	126.09	9.5	6.9	105	12.4	49	17.9	1.06	E.2	1.0
NORTHAMPTON COUNTY PA										
NP 816	52.21	7.0	6.9	304	16.6	120	41.8	3.95	.4	10.0
NP 817	36.92	1.2	7.7	175	12.2	79	24.3	4.28	.3	6.7
	36.92	1.2	7.7	175	12.2	--	24.3	4.25	.28	6.6
	36.92	1.2	7.7	175	12.2	--	--	--	--	--
NP 818	46.97	8.5	6.2	187	12.2	85	24.6	5.60	.8	3.9
SCHUYLKILL COUNTY PA										
SC 296	40.12	7.1	5.6	79	11.8	30	8.61	2.00	.7	1.6
SC 634	45.27	.4	7.8	158	15.0	67	21.6	3.05	.4	5.2
SC 635	14.05	3.7	7.4	186	10.8	53	19.2	1.01	E.2	16.9
SC 636	65.95	11.6	6.2	47	11.6	20	6.55	.97	.4	.6
SC 637	14.46	.2	7.3	188	13.4	85	26.9	4.34	.4	5.9
	14.46	.2	7.3	188	13.4	--	--	--	--	--



**GROUND-WATER DATA COLLECTED AT SPECIAL-STUDY SITES  
DELAWARE RIVER BASIN NAWQA PROJECT**

**GROUND WATER IN THE CLASTIC BEDROCK WITHIN THE VALLEY AND RIDGE PHYSIOGRAPHIC PROVINCE**

WATER-QUALITY DATA, WATER YEAR OCTOBER 1999 TO SEPTEMBER 2000

LOCAL ID	PHOS- PHORUS DIS- SOLVED (MG/L AS P) (00666)	PHOS- PHORUS ORTHO, DIS- SOLVED (MG/L AS P) (00671)	CARBON, ORGANIC DIS- SOLVED (MG/L AS C) (00681)	SOLIDS, RESIDUE AT 180 DEG. C DIS- SOLVED (MG/L) (70300)	SOLIDS, SUM OF CONSTI- TUENTS, DIS- SOLVED (MG/L) (70301)	TUR- BID- ITY FIELD WATER UNFLTRD (NTU) (61028)	COLI- FORM, TOTAL, IMMED. (COLS. PER 100 ML) (31501)	E. COLI WTR FLT MF 0.7U NUT AG- AR+MUG COL/100 (50278)	ALUM- INUM, DIS- SOLVED (µG/L AS AL) (01106)	ANTI- MONY, DIS- SOLVED (µG/L AS SB) (01095)
BERKS COUNTY PA										
BE 1617	.028	.027	E.26	124	121	0	K1	<1	4	<1
BE 1703	.009	.013	E.24	205	194	0	<1	<1	18	<1
BE 1704	.018	.014	E.32	102	102	2	<1	<1	10	<1
BE 1705	<.006	<.010	<.33	13	14	1	<1	<1	10	<1
BE 1707	.062	.058	E.20	120	122	0	<1	<1	4	<1
	.062	.058	--	125	122	0	--	--	--	--
BE 1708	--	--	--	--	--	0	--	--	12	<1
	.037	.037	<.33	176	167	0	<1	<1	<1	<1
CARBON COUNTY PA										
CB 334	.006	<.010	E.26	119	114	0	<1	<1	5	<1
CB 335	.020	.016	<.33	30	26	3	<1	<1	8	<1
	--	--	--	--	--	3	--	--	--	--
CB 336	.008	<.010	E.26	35	32	<1	<1	<1	5	<1
CB 337	.012	<.010	E.31	125	91	8	<1	<1	10	<1
	--	--	--	--	--	8	--	--	--	--
CB 338	.092	.085	<.33	86	--	0	<1	<1	8	<1
	--	--	<.33	--	--	0	--	--	--	--
	--	--	--	--	--	0	--	--	--	--
LEHIGH COUNTY PA										
LE 1419	E.005	<.010	E.22	187	181	13	K1	<1	15	<1
LE 1420	E.003	<.010	E.20	201	192	0	K110	<1	14	<1
MONROE COUNTY PA										
MO 682	.009	<.010	E.25	91	84	1	K91	<1	8	<1
MO 683	E.004	<.010	E.23	53	45	0	<1	<1	17	<1
MO 684	.317	.285	<.33	68	--	10	<1	<1	2	<1
NORTHAMPTON COUNTY PA										
NP 816	.010	<.010	E.29	199	180	0	<1	<1	12	<1
NP 817	.050	.042	<.33	115	111	6	<1	<1	9	<1
	.050	.045	--	--	--	6	--	--	--	--
	--	--	--	--	--	6	--	--	12.5	<1
NP 818	.015	.015	.33	144	135	0	28	K7	11	<1
SCHUYLKILL COUNTY PA										
SC 296	.024	.021	.43	50	47	2	<1	<1	2	<1
SC 634	.008	.014	E.32	100	105	1	<1	<1	<1	<1
SC 635	<.006	.017	E.22	110	--	7	<1	<1	<1	<1
SC 636	.027	.026	.44	35	30	0	24	<1	<1	<1
SC 637	.029	.020	E.23	134	128	2	<1	<1	5	<1
	--	--	E.21	--	--	2	--	--	--	--







**GROUND-WATER DATA COLLECTED AT SPECIAL-STUDY SITES  
DELAWARE RIVER BASIN NAWQA PROJECT**

**GROUND WATER IN THE CLASTIC BEDROCK WITHIN THE VALLEY AND RIDGE PHYSIOGRAPHIC PROVINCE**

WATER-QUALITY DATA, WATER YEAR OCTOBER 1999 TO SEPTEMBER 2000

LOCAL ID	ZINC, DIS- SOLVED (µG/L AS ZN) (01090)	ACETO- CHLOR ESA FLTRD 0.7 µM GF REC (µG/L) (61029)	ACETO- CHLOR OA FLTRD 0.7 µM GF REC (µG/L) (61030)	ACETO- CHLOR, WATER FLTRD REC (µG/L) (49260)	ALA- CHLOR OA FLTRD 0.7 µM GF REC (µG/L) (61031)	ALA- CHLOR, (ESA) WAT FLT REC (µG/L) (50009)	ALA- CHLOR, WATER, DISS, REC, (µG/L) (46342)	ATRA- ZINE, WATER, DISS, REC (µG/L) (39632)	BEN- FLUR- ALIN WAT FLD GF, REC (µG/L) (82673)	BUTYL- ATE, WATER, DISS, REC (µG/L) (04028)
	BERKS COUNTY PA									
BE 1617	3	<.05	<.05	<.002	<.05	<.050	<.002	<.001	<.002	<.002
BE 1703	5	<.05	<.05	<.002	<.05	.280	<.002	.043	<.002	<.002
BE 1704	3	<.05	<.05	<.002	<.05	<.050	<.002	<.001	<.002	<.002
BE 1705	17	<.05	<.05	<.002	<.05	<.050	<.002	<.001	<.002	<.002
BE 1707	6	<.05	<.05	<.002	.21	.210	.178	E.004	<.002	<.002
	--	--	--	--	--	--	--	--	--	--
BE 1708	9	--	--	--	--	--	--	--	--	--
	3	<.05	<.05	<.002	<.05	<.050	<.002	<.001	<.002	<.002
	CARBON COUNTY PA									
CB 334	4	<.05	<.05	<.002	<.05	.470	<.002	.005	<.002	<.002
CB 335	4	<.05	<.05	<.002	<.05	<.050	<.002	<.001	<.002	<.002
	--	--	--	--	--	--	--	--	--	--
CB 336	5	<.05	<.05	<.002	<.05	<.050	<.002	.006	<.002	<.002
CB 337	7	<.05	<.05	<.002	<.05	.150	<.002	.021	<.002	<.002
	--	--	--	--	--	--	--	--	--	--
CB 338	4	<.05	<.05	<.002	<.05	<.050	<.002	<.001	<.002	<.002
	--	<.05	<.05	--	<.05	<.050	--	--	--	--
	--	--	--	--	--	--	--	--	--	--
	LEHIGH COUNTY PA									
LE 1419	3	<.05	<.05	--	<.05	<.050	--	--	--	--
LE 1420	5	<.05	<.05	<.002	<.05	<.050	<.002	.006	<.002	<.002
	MONROE COUNTY PA									
MO 682	7	<.05	<.05	<.002	<.05	<.050	<.002	<.001	<.002	<.002
MO 683	16	<.05	<.05	<.002	<.05	.210	<.002	E.004	<.002	<.002
MO 684	3	<.05	<.05	<.002	<.05	<.050	<.002	<.001	<.002	<.002
	NORTHAMPTON COUNTY PA									
NP 816	9	<.05	<.05	<.002	<.05	<.050	<.002	<.005	<.002	<.002
NP 817	3	<.05	<.05	<.002	<.05	<.050	<.002	<.001	<.002	<.002
	--	--	--	--	--	--	--	--	--	--
	3	--	--	--	--	--	--	--	--	--
NP 818	5	<.05	<.05	<.002	<.05	.260	<.002	.006	<.002	<.002
	SCHUYLKILL COUNTY PA									
SC 296	2	<.05	<.05	<.002	<.05	<.050	<.002	<.001	<.002	<.002
SC 634	<1	<.05	<.05	<.002	<.05	<.050	<.002	<.001	<.002	<.002
SC 635	2	<.05	<.05	<.002	<.05	<.050	<.002	<.001	<.002	<.002
SC 636	<1	<.05	<.05	<.002	<.05	<.050	<.002	<.001	<.002	<.002
SC 637	3	<.05	<.05	<.002	<.05	<.050	<.002	E.002	<.002	<.002
	--	<.05	<.05	<.002	<.05	<.050	<.002	<.001	<.002	<.002

**GROUND-WATER DATA COLLECTED AT SPECIAL-STUDY SITES  
DELAWARE RIVER BASIN NAWQA PROJECT**

**GROUND WATER IN THE CLASTIC BEDROCK WITHIN THE VALLEY AND RIDGE PHYSIOGRAPHIC PROVINCE**

WATER-QUALITY DATA, WATER YEAR OCTOBER 1999 TO SEPTEMBER 2000

LOCAL ID	CAR- BARYL WATER FLTRD 0.7 µ GF, REC (µG/L) (82680)	CARBO- FURAN WATER FLTRD 0.7 µ GF, REC (µG/L) (82674)	CHLOR- PYRIFOS DIS- SOLVED (µG/L) (38933)	CYANA- ZINE, WATER, FLTRD DIS- REC (µG/L) (04041)	DCPA WATER FLTRD 0.7 µ GF, REC (µG/L) (82682)	DEETHYL ATRA- ZINE, WATER, FLTRD DISS, REC (µG/L) (04040)	DI- AZINON, DIS- SOLVED (µG/L) (39572)	DI- ELDRIN DIS- SOLVED (µG/L) (39381)	EPTC WATER FLTRD 0.7 µ GF, REC (µG/L) (82668)	FONOFOS WATER FLTRD DISS REC (µG/L) (04095)
BERKS COUNTY PA										
BE 1617	<.003	<.003	<.004	<.004	<.002	<.002	<.002	<.001	<.002	<.003
BE 1703	<.003	<.003	<.004	<.004	<.002	E.23	<.002	<.001	<.002	<.003
BE 1704	<.003	<.003	<.004	<.004	<.002	<.002	<.002	<.001	<.002	<.003
BE 1705	<.003	<.003	<.004	<.004	<.002	<.002	<.002	<.001	<.002	<.003
BE 1707	<.003	<.003	<.004	<.004	<.002	E.004	<.002	<.001	<.002	<.003
	--	--	--	--	--	--	--	--	--	--
BE 1708	<.003	<.003	<.004	<.004	<.002	<.002	<.002	<.001	<.002	<.003
CARBON COUNTY PA										
CB 334	<.003	<.003	<.004	<.004	<.002	E.017	<.002	<.001	<.002	<.003
CB 335	<.003	<.003	<.004	<.004	<.002	<.002	<.002	<.001	<.002	<.003
	--	--	--	--	--	--	--	--	--	--
CB 336	<.003	<.003	<.004	<.004	<.002	E.022	<.002	<.001	<.002	<.003
CB 337	<.003	<.003	<.004	<.004	<.002	E.20	<.002	<.001	<.002	<.003
	--	--	--	--	--	--	--	--	--	--
CB 338	<.003	<.003	<.004	<.004	<.002	<.002	<.002	<.001	<.002	<.003
	--	--	--	--	--	--	--	--	--	--
	--	--	--	--	--	--	--	--	--	--
LEHIGH COUNTY PA										
LE 1419	--	--	--	--	--	--	--	--	--	--
LE 1420	<.003	<.003	<.004	<.004	<.002	<.002	<.002	<.001	<.002	<.003
MONROE COUNTY PA										
MO 682	<.003	<.003	<.004	<.004	<.002	<.002	<.002	<.001	<.002	<.003
MO 683	<.003	<.003	<.004	<.004	<.002	E.003	<.002	<.001	<.002	<.003
MO 684	<.003	<.003	<.004	<.004	<.002	<.002	<.002	<.001	<.002	<.003
NORTHAMPTON COUNTY PA										
NP 816	<.003	<.003	<.004	<.004	<.002	<.002	<.002	<.001	<.002	<.003
NP 817	<.003	<.003	<.004	<.004	<.002	<.002	<.002	<.001	<.002	<.003
	--	--	--	--	--	--	--	--	--	--
NP 818	E.004	<.003	<.004	<.004	<.002	E.005	E.001	<.001	<.002	<.003
	--	--	--	--	--	--	--	--	--	--
SCHUYLKILL COUNTY PA										
SC 296	<.003	<.003	<.004	<.004	<.002	<.002	<.002	<.001	<.002	<.003
SC 634	<.003	<.003	<.004	<.004	<.002	<.002	<.002	<.001	<.002	<.003
SC 635	<.003	<.003	<.004	<.004	<.002	<.002	<.002	<.001	<.002	<.003
SC 636	<.003	<.003	<.004	<.004	<.002	<.002	<.002	<.001	<.002	<.003
SC 637	<.003	<.003	<.004	<.004	<.002	<.002	<.002	<.001	<.002	<.003
	<.003	<.003	<.004	<.004	<.002	<.002	<.002	<.001	<.002	<.003

**GROUND-WATER DATA COLLECTED AT SPECIAL-STUDY SITES  
DELAWARE RIVER BASIN NAWQA PROJECT**

**GROUND WATER IN THE CLASTIC BEDROCK WITHIN THE VALLEY AND RIDGE PHYSIOGRAPHIC PROVINCE**

WATER-QUALITY DATA, WATER YEAR OCTOBER 1999 TO SEPTEMBER 2000

LOCAL ID	LINDANE DIS- SOLVED (µG/L) (39341)	LIN- URON WATER FLTRD 0.7 µ GF, REC (µG/L) (82666)	MALA- THION, DIS- SOLVED (µG/L) (39532)	METHYL AZIN- PHOS WAT FLT 0.7 µ GF, REC (µG/L) (82686)	METOLA- CHLOR ESA FLTRD 0.7 µM GF REC (µG/L) (61043)	METOLA- CHLOR OA FLTRD 0.7 µM GF REC (µG/L) (61044)	METO- LACHLOR WATER DISSOLV (µG/L) (39415)	METRI- BUZIN WATER DISSOLV (µG/L) (82630)	NAPROP- AMIDE WATER FLTRD 0.7 µ GF, REC (µG/L) (82684)	P, P' DDE DISSOLV (µG/L) (34653)
	BERKS COUNTY PA									
BE 1617	<.004	<.002	<.005	<.001	.08	<.05	<.002	<.004	<.003	<.006
BE 1703	<.004	<.002	<.005	<.001	1.41	.08	.005	<.004	<.003	<.006
BE 1704	<.004	<.002	<.005	<.010	<.05	<.05	<.002	<.004	<.003	<.006
BE 1705	<.004	<.002	<.005	<.001	<.05	<.05	<.002	<.004	<.003	<.006
BE 1707	<.004	<.002	<.005	<.010	<.05	<.05	.005	<.004	<.003	<.006
	--	--	--	--	--	--	--	--	--	--
BE 1708	<.004	<.002	<.005	<.001	<.05	<.05	<.002	E.002	<.003	<.006
	--	--	--	--	--	--	--	--	--	--
CARBON COUNTY PA										
CB 334	<.004	<.002	<.005	<.010	.59	<.05	<.002	<.004	<.003	<.006
CB 335	<.004	<.002	<.005	<.001	<.05	<.05	<.002	<.004	<.003	E.001
	--	--	--	--	--	--	--	--	--	--
CB 336	<.004	<.002	<.005	<.001	<.05	<.05	<.002	<.004	<.003	<.006
CB 337	<.004	<.002	<.005	<.001	10.1	2.51	.500	.005	.034	<.006
	--	--	--	--	--	--	--	--	--	--
CB 338	<.004	<.002	<.005	<.001	<.05	<.05	<.002	<.004	<.003	<.006
	--	--	--	--	<.05	<.05	--	--	--	--
	--	--	--	--	--	--	--	--	--	--
LEHIGH COUNTY PA										
LE 1419	--	--	--	--	.06	<.05	--	--	--	--
LE 1420	<.004	<.002	<.005	<.001	.42	.12	.004	<.004	<.003	<.006
MONROE COUNTY PA										
MO 682	<.004	<.002	<.005	<.001	<.05	<.05	<.002	<.004	<.003	<.006
MO 683	<.004	<.002	<.005	<.010	.22	<.05	.005	<.004	<.003	<.006
MO 684	<.004	<.002	<.005	<.001	<.05	<.05	<.002	<.004	<.003	E.002
NORTHAMPTON COUNTY PA										
NP 816	<.004	<.002	<.005	<.001	<.05	<.05	<.002	<.004	<.003	<.006
NP 817	<.004	<.002	<.005	<.001	<.05	<.05	<.002	<.004	<.003	<.006
	--	--	--	--	--	--	--	--	--	--
NP 818	<.004	<.002	<.005	<.001	<.05	<.05	E.004	E.002	<.003	E.002
SCHUYLKILL COUNTY PA										
SC 296	<.004	<.002	<.005	<.001	.37	<.05	<.002	<.004	<.003	<.006
SC 634	<.004	<.002	<.005	<.001	<.05	<.05	<.002	<.004	<.003	<.006
SC 635	<.004	<.002	<.005	<.001	<.05	<.05	<.002	<.004	<.003	<.006
SC 636	<.004	<.002	<.005	<.001	<.05	<.05	<.002	<.004	<.003	<.006
SC 637	<.004	<.002	<.005	<.001	<.05	<.05	<.002	<.004	<.003	<.006
	<.004	<.002	<.005	<.001	<.05	<.05	<.002	<.004	<.003	<.006

**GROUND-WATER DATA COLLECTED AT SPECIAL-STUDY SITES  
DELAWARE RIVER BASIN NAWQA PROJECT**

**GROUND WATER IN THE CLASTIC BEDROCK WITHIN THE VALLEY AND RIDGE PHYSIOGRAPHIC PROVINCE**

WATER-QUALITY DATA, WATER YEAR OCTOBER 1999 TO SEPTEMBER 2000

LOCAL ID	PENDI-METH-ALIN WAT FLT 0.7 µ GF, REC (µG/L) (82683)	PRO-METON, WATER, DISS, REC (µG/L) (04037)	PRON-AMIDE WATER FLTRD 0.7 µ GF, REC (µG/L) (82676)	PROPA-CHLOR, WATER, DISS, REC (µG/L) (04024)	PRO-PANIL WATER FLTRD 0.7 µ GF, REC (µG/L) (82679)	SI-MAZINE, WATER, DISS, REC (µG/L) (04035)	TEBU-THIURON WATER FLTRD 0.7 µ GF, REC (µG/L) (82670)	TER-BACIL WATER FLTRD 0.7 µ GF, REC (µG/L) (82665)	TER-BUTHYL-AZINE, WATER, DISS, REC (µG/L) (04022)	TRIAL-LATE WATER FLTRD 0.7 µ GF, REC (µG/L) (82678)
BERKS COUNTY PA										
BE 1617	<.004	<.018	<.003	<.007	<.004	<.005	<.010	<.007	--	<.001
BE 1703	<.004	<.018	<.003	<.007	<.004	.014	<.010	<.007	--	<.001
BE 1704	<.004	<.018	<.003	<.007	<.004	<.005	<.010	<.007	--	<.001
BE 1705	<.004	<.018	<.003	<.007	<.004	<.005	<.010	<.007	--	<.001
BE 1707	<.004	<.018	<.003	<.007	<.004	<.005	<.010	<.007	--	<.001
	--	--	--	--	--	--	--	--	--	--
BE 1708	<.004	<.018	<.003	<.007	<.004	<.005	<.010	<.007	--	E.001
CARBON COUNTY PA										
CB 334	<.004	<.018	<.003	<.007	<.004	<.005	<.010	<.007	--	<.001
CB 335	<.004	<.018	<.003	<.007	<.004	<.005	<.010	<.007	--	<.001
	--	--	--	--	--	--	--	--	--	--
CB 336	<.004	<.018	<.003	<.007	<.004	<.005	<.010	<.007	--	<.001
CB 337	<.004	<.018	<.003	<.007	<.004	<.005	<.010	<.007	--	<.001
	--	--	--	--	--	--	--	--	--	--
CB 338	<.004	<.018	<.003	<.007	<.004	<.005	<.010	<.007	--	<.001
	--	--	--	--	--	--	--	--	--	--
	--	--	--	--	--	--	--	--	--	--
LEHIGH COUNTY PA										
LE 1419	--	--	--	--	--	--	--	--	--	--
LE 1420	<.004	<.018	<.003	<.007	<.004	<.005	<.010	<.007	--	<.001
MONROE COUNTY PA										
MO 682	<.004	<.018	<.003	<.007	<.004	.008	<.010	<.007	--	<.001
MO 683	<.004	<.018	<.003	<.007	<.004	<.005	<.010	<.007	--	<.001
MO 684	<.004	<.018	<.003	<.007	<.004	<.005	<.010	<.007	--	<.001
NORTHAMPTON COUNTY PA										
NP 816	<.004	<.018	<.003	<.007	<.004	<.005	<.010	<.007	--	<.001
NP 817	<.004	<.018	<.003	<.007	<.004	<.005	<.010	<.007	--	<.001
	--	--	--	--	--	--	--	--	--	--
NP 818	<.004	<.018	E.001	<.007	E.001	<.005	<.010	<.007	--	<.001
SCHUYLKILL COUNTY PA										
SC 296	<.004	<.018	<.003	<.007	<.004	<.005	<.010	<.007	--	<.001
SC 634	<.004	<.018	<.003	<.007	<.004	<.005	<.010	<.007	--	<.001
SC 635	<.004	<.018	<.003	<.007	<.004	<.005	<.010	<.007	--	<.001
SC 636	<.004	<.018	<.003	<.007	<.004	<.005	<.010	<.007	--	<.001
SC 637	<.004	<.018	<.003	<.007	<.004	<.005	<.010	<.007	--	<.001
	<.004	<.018	<.003	<.007	<.004	<.005	<.010	<.007	--	<.001













**GROUND-WATER DATA COLLECTED AT SPECIAL-STUDY SITES  
DELAWARE RIVER BASIN NAWQA PROJECT**

**GROUND WATER IN THE CLASTIC BEDROCK WITHIN THE VALLEY AND RIDGE PHYSIOGRAPHIC PROVINCE**

WATER-QUALITY DATA, WATER YEAR OCTOBER 1999 TO SEPTEMBER 2000

LOCAL ID	TRI- CHLORO- FLUORO- METHANE TOTAL (µG/L) (34488)	ALPHA RADIO- WATER DISS AS TH-230 (PCI/L) (04126)	GROSS BETA, DIS- SOLVED (PCI/L) AS CS-137) (03515)	RADIUM DIS- 226, DIS- SOLVED (PCI/L) (09503)	RADIUM 228 DIS- SOLVED AS RA-228) (81366)	RA-224 WATER FLTRD (PCI/L) (50833)	RADON 222 TOTAL (PCI/L) (82303)	URANIUM NATURAL DIS- SOLVED (µG/L AS U) (22703)	MEDIUM CODE
BERKS COUNTY PA									
BE 1617	<.09	6.18	4.62	<1.00	<1.00	<1.00	1200	<1	6
BE 1703	<.09	<3.00	<4.00	<1.00	<1.00	<1.00	765	<1	6
BE 1704	<.09	<3.00	<4.00	<1.00	<1.00	<1.00	1320	<1	6
BE 1705	<.09	<3.00	<4.00	<1.00	<1.00	<1.00	3680	<1	6
BE 1707	<.09	<3.00	<4.00	<1.00	<1.00	<1.00	1500	<1	6
	--	--	--	--	--	--	--	--	S
BE 1708	<.09	5.35	5.33	<1.00	<1.00	<1.00	82.0	<1 2	S 6
CARBON COUNTY PA									
CB 334	<.09	<3.00	<4.00	<1.00	<1.00	<1.00	1830	<1	6
CB 335	<.09	36.7	47.9	<1.00	<1.00	<1.00	6020	<1	6
	--	--	--	--	--	--	5980	--	S
CB 336	<.09	<3.00	<4.00	<1.00	<1.00	<1.00	5930	<1	6
CB 337	<.09	<3.00	<4.00	<1.00	<1.00	<1.00	3460	<1	6
	--	--	--	--	--	--	3290	--	S
CB 338	<.09	<3.00	<4.00	<1.00	<1.00	<1.00	60.0	<1	6
	--	--	--	--	--	--	--	--	S
	<.09	--	--	--	--	--	--	--	S
LEHIGH COUNTY PA									
LE 1419	<.09	<3.00	4.46	<1.00	<1.00	<1.00	139	<1	6
LE 1420	<.09	5.25	5.56	<1.00	<1.00	<1.00	661	<1	6
MONROE COUNTY PA									
MO 682	<.09	<3.00	<4.00	<1.00	<1.00	<1.00	1360	<1	6
MO 683	<.09	<3.00	<4.00	<1.00	<1.00	<1.00	3060	<1	6
MO 684	<.09	9.92	8.50	<1.00	<1.00	<1.00	4300	<1	6
NORTHAMPTON COUNTY PA									
NP 816	<.09	<3.00	<4.00	<1.00	<1.00	<1.00	3450	<1	6
NP 817	<.09	<3.00	<4.00	<1.00	<1.00	<1.00	586	<1	6
	--	--	--	--	--	--	--	--	S
	--	--	--	--	--	--	--	--	S
NP 818	<.09	<3.00	<4.00	<1.00	<1.00	<1.00	3660	<1	6
SCHUYLKILL COUNTY PA									
SC 296	<.09	<3.00	<4.00	<1.00	<1.00	<1.00	3980	<1	6
SC 634	<.09	7.66	8.85	<1.00	<1.00	<1.00	542	<1	6
SC 635	<.09	9.09	11.5	<1.00	<1.00	<1.00	847	<1	6
SC 636	<.09	<3.00	<4.00	<1.00	<1.00	<1.00	2410	<1	6
SC 637	<.09	<3.00	<4.00	<1.00	<1.00	<1.00	313	<1	6
	--	--	--	--	--	--	294	--	S

**GROUND-WATER DATA COLLECTED AT SPECIAL-STUDY SITES  
DELAWARE RIVER BASIN NAWQA PROJECT**

**GROUND WATER IN THE CLASTIC BEDROCK WITHIN THE VALLEY AND RIDGE PHYSIOGRAPHIC PROVINCE**

WATER-QUALITY DATA, WATER YEAR OCTOBER 1999 TO SEPTEMBER 2000

LOCAL ID	STATION NUMBER	DATE	TIME	SAMPLE TYPE	AGENCY ANA-LYZING SAMPLE (CODE NUMBER) (00028)	AGENCY COLLECTING SAMPLE (CODE NUMBER) (00027)	ELEV.	DEPTH
							OF LAND SURFACE DATUM ABOVE NGVD) (72000)	
SUSSEX COUNTY NJ								
370215	411117074480401	06-06-00	1100	ENVIRONMENTAL	80020	1028	760	185.00
370453	4111930074431401	07-19-00	1200	ENVIRONMENTAL	80020	1028	560	65.00
		07-19-00	1222	REPLICATE	80020	1028	560	65.00
370454	411401074452901	06-05-00	1300	ENVIRONMENTAL	80020	1028	860	325.00
WARREN COUNTY NJ								
410266	410422074575101	06-07-00	1300	ENVIRONMENTAL	80020	1028	650	172.00
410312	405702074585201	05-17-00	1200	ENVIRONMENTAL	80020	1028	685	400.00
410384	410127074571601	05-18-00	1200	ENVIRONMENTAL	80020	--	780	115.00

WATER-QUALITY DATA, WATER YEAR OCTOBER 1999 TO SEPTEMBER 2000

LOCAL ID	DEPTH	PH		SPE- CIFIC CON- DUCT- ANCE (µS/CM) (00095)	TEMPER- ATURE WATER (DEG C) (00010)	HARD- NESS TOTAL (MG/L AS CACO3) (00900)	CALCIUM DIS- SOLVED (MG/L AS CA) (00915)	MAGNE- SIUM, DIS- SOLVED (MG/L AS MG) (00925)	POTAS- SIUM, DIS- SOLVED (MG/L AS K) (00935)	SODIUM, DIS- SOLVED (MG/L AS NA) (00930)
	BELOW LAND SURFACE (WATER LEVEL) (FEET) (72019)	OXYGEN, DIS- SOLVED (MG/L) (00300)	WATER FIELD (STAND- ARD UNITS) (00400)							
SUSSEX COUNTY NJ										
370215	--	7.4	6.7	99	12.0	45	9.76	5.04	.5	1.8
370453	11.83	6.2	8.0	315	13.2	150	31.8	17.2	.7	4.4
	11.83	6.2	8.0	315	13.2	--	--	--	--	--
370454	19.25	2.3	7.7	234	11.6	110	24.9	11.1	1.2	7.5
WARREN COUNTY NJ										
410266	33.41	2.4	8.0	225	12.4	110	25.5	12.0	.8	3.4
410312	-1.11	2.9	7.4	549	14.2	280	68.2	27.5	.6	5.4
410384	--	5.5	6.6	296	11.6	110	38.8	4.25	1.5	11.6

WATER-QUALITY DATA, WATER YEAR OCTOBER 1999 TO SEPTEMBER 2000

LOCAL ID	ALKA- LINITY WAT DIS TOT IT FIELD (MG/L AS CACO3) (39086)	CHLO- RIDE, DIS- SOLVED (MG/L AS CL) (00940)	FLUO- RIDE, DIS- SOLVED (MG/L AS F) (00950)	SILICA, DIS- SOLVED (MG/L AS SIO2) (00955)	SULFATE DIS- SOLVED (MG/L AS SO4) (00945)	NITRO- GEN, AM- MONIA + ORGANIC DIS. (MG/L AS N) (00623)	NITRO- GEN, AM- MONIA DIS- SOLVED (MG/L AS N) (00608)	NITRO- GEN, NO2+NO3 DIS- SOLVED (MG/L AS N) (00631)	NITRO- GEN, NITRITE DIS- SOLVED (MG/L AS N) (00613)	PHOS- PHATE, ORTHO, DIS- SOLVED (MG/L AS PO4) (00660)
	SUSSEX COUNTY NJ									
370215	40	1.8	<.1	6.6	6.0	<.10	<.020	<.050	<.010	.034
370453	110	3.2	<.1	9.1	47.7	<.10	<.020	.459	<.010	.037
	110	--	--	--	--	--	--	--	--	--
370454	118	1.7	<.1	11.4	6.6	<.10	<.020	<.050	<.010	.037
WARREN COUNTY NJ										
410266	112	1.6	<.1	7.9	6.5	<.10	<.020	<.050	<.010	.046
410312	170	25.2	<.1	12.6	64.3	<.10	<.020	7.20	.021	--
410384	103	25.9	<.1	10.7	18.0	<.10	<.020	1.55	<.010	--

**GROUND-WATER DATA COLLECTED AT SPECIAL-STUDY SITES  
DELAWARE RIVER BASIN NAWQA PROJECT**

**GROUND WATER IN THE CLASTIC BEDROCK WITHIN THE VALLEY AND RIDGE PHYSIOGRAPHIC PROVINCE**

WATER-QUALITY DATA, WATER YEAR OCTOBER 1999 TO SEPTEMBER 2000

LOCAL ID	PHOS-PHORUS DIS-SOLVED (MG/L AS P) (00666)	PHOS-PHORUS ORTHO-DIS-SOLVED (MG/L AS P) (00671)	CARBON ORGANIC DIS-SOLVED (MG/L AS C) (00681)	SOLIDS, RESIDUE AT 180 DEG. C SOLVED (MG/L) (70300)	SOLIDS, SUM OF CONSTI-TUENTS, DIS-SOLVED (MG/L) (70301)	TUR-BID-ITY FIELD WATER UNFLTRD (NTU) (61028)	COLI-FORM, TOTAL, IMMED. (COLS. PER 100 ML) (31501)	E. COLI WTR FLT MF 0.7U NUT AG-AR+MUG COL/100 (50278)	ALUM-INUM, DIS-SOLVED (MG/L AS AL) (01106)	ANTI-MONY, DIS-SOLVED (MG/L AS SB) (01095)
SUSSEX COUNTY NJ										
370215	.013	.011	E.29	57	56	0	<1	<1	1	<1
370453	.008	.012	E.19	192	185	1	<1	<1	19	<1
	--	--	--	--	--	1	--	--	--	--
370454	.012	.012	E.29	134	136	9	<1	<1	10	<1
WARREN COUNTY NJ										
410266	.019	.015	E.22	123	125	7	<1	<1	3	<1
410312	E.004	<.010	E.25	352	338	1	<1	<1	9	<1
410384	E.004	<.010	.34	178	180	0	<1	<1	12	<1

WATER-QUALITY DATA, WATER YEAR OCTOBER 1999 TO SEPTEMBER 2000

LOCAL ID	ARSENIC DIS-SOLVED (MG/L AS AS) (01000)	BARIUM, DIS-SOLVED (MG/L AS BA) (01005)	BERYL-LIUM, DIS-SOLVED (MG/L AS BE) (01010)	BORON, DIS-SOLVED (MG/L AS B) (01020)	BROMIDE DIS-SOLVED (MG/L AS BR) (71870)	CADMIUM DIS-SOLVED (MG/L AS CD) (01025)	CHRO-MIUM, DIS-SOLVED (MG/L AS CR) (01030)	COBALT, DIS-SOLVED (MG/L AS CO) (01035)	COPPER, DIS-SOLVED (MG/L AS CU) (01040)	IRON, DIS-SOLVED (MG/L AS FE) (01046)
SUSSEX COUNTY NJ										
370215	<.9	60	<1	E8	<.01	<1.0	<.8	<1	11	<10
370453	E.5	56	<1	34	.01	<1.0	1.0	<1	3	<10
	--	--	--	--	--	--	--	--	--	--
370454	7.7	175	<1	21	.02	<1.0	<.8	<1	1	<10
WARREN COUNTY NJ										
410266	<.9	85	<1	E6	.02	<1.0	<.8	<1	7	<10
410312	E.7	41	<1	E9	.03	<1.0	1.9	<1	3	E10
410384	<.9	3	<1	29	.02	<1.0	<.8	<1	6	<10

WATER-QUALITY DATA, WATER YEAR OCTOBER 1999 TO SEPTEMBER 2000

LOCAL ID	LEAD, DIS-SOLVED (MG/L AS PB) (01049)	LITHIUM DIS-SOLVED (MG/L AS LI) (01130)	MANGA-NESE, DIS-SOLVED (MG/L AS MN) (01056)	MOLYB-DENUM, DIS-SOLVED (MG/L AS MO) (01060)	NICKEL, DIS-SOLVED (MG/L AS NI) (01065)	SELE-NIUM, DIS-SOLVED (MG/L AS SE) (01145)	SILVER, DIS-SOLVED (MG/L AS AG) (01075)	STRON-TIUM, DIS-SOLVED (MG/L AS SR) (01080)	THAL-LIUM, DIS-SOLVED (MG/L AS TL) (01057)	VANA-DIUM, DIS-SOLVED (MG/L AS V) (01085)
SUSSEX COUNTY NJ										
370215	<1	3.2	<1	<1	<1	<.7	<1	50.4	<.9	<1
370453	<1	11.1	<1	<1	<1	<.7	<1	2390	<.9	<1
	--	--	--	--	--	--	--	--	--	--
370454	<1	16.2	<1	2	<1	E.4	<1	1030	<.9	<1
WARREN COUNTY NJ										
410266	<1	2.8	<1	<1	1	<.7	<1	193	<.9	<1
410312	<1	3.7	5	<1	2	2.8	<1	278	<.9	<1
410384	<1	3.5	<1	<1	<1	<.7	<1	184	<.9	<1

**GROUND-WATER DATA COLLECTED AT SPECIAL-STUDY SITES  
DELAWARE RIVER BASIN NAWQA PROJECT**

**GROUND WATER IN THE CLASTIC BEDROCK WITHIN THE VALLEY AND RIDGE PHYSIOGRAPHIC PROVINCE**

WATER-QUALITY DATA, WATER YEAR OCTOBER 1999 TO SEPTEMBER 2000

LOCAL ID	ZINC, DIS- SOLVED (µG/L AS ZN) (01090)	ACETO- CHLOR ESA FLTRD 0.7 µM GF REC (µG/L) (61029)	ACETO- CHLOR OA FLTRD 0.7 µM GF REC (µG/L) (61030)	ACETO- CHLOR, WATER FLTRD 0.7 µM REC (µG/L) (49260)	ALA- CHLOR OA FLTRD 0.7 µM GF REC (µG/L) (61031)	ALA- CHLOR, (ESA) WAT FLT 0.7U REC (µG/L) (50009)	ALA- CHLOR, WATER, DISS, REC, (µG/L) (46342)	ATRA- ZINE, WATER, DISS, REC (µG/L) (39632)	BEN- FLUR- ALIN WAT FLD 0.7 µ GF, REC (µG/L) (82673)	BUTYL- ATE, WATER, DISS, REC (µG/L) (04028)
	SUSSEX COUNTY NJ									
370215	3	<.05	<.05	<.002	<.05	<.050	<.002	<.001	<.002	<.002
370453	7	<.05	<.05	<.002	<.05	<.050	<.002	<.001	<.002	<.002
	--	--	--	--	--	--	--	--	--	--
370454	3	<.05	<.05	<.002	<.05	<.050	<.002	<.001	<.002	<.002
WARREN COUNTY NJ										
410266	2	<.05	<.05	<.002	<.05	<.050	<.002	<.001	<.002	<.002
410312	38	<.05	<.05	<.002	<.05	.360	<.002	<.001	<.002	<.002
410384	5	<.05	<.05	<.002	<.05	<.050	<.002	<.001	<.002	<.002

WATER-QUALITY DATA, WATER YEAR OCTOBER 1999 TO SEPTEMBER 2000

LOCAL ID	CAR- BARYL WATER FLTRD 0.7 µ GF, REC (µG/L) (82680)	CARBO- FURAN WATER FLTRD 0.7 µ GF, REC (µG/L) (82674)	CHLOR- PYRIFOS DIS- SOLVED (µG/L) (38933)	CYANA- ZINE, WATER, DISS, REC (µG/L) (04041)	DCPA WATER FLTRD 0.7 µ GF, REC (µG/L) (82682)	DEETHYL ATRA- ZINE, WATER, DISS, REC (µG/L) (04040)	DI- AZINON, DIS- SOLVED (µG/L) (39572)	DI- ELDRIN DIS- SOLVED (µG/L) (39381)	EPTC WATER FLTRD 0.7 µ GF, REC (µG/L) (82668)	FONOFOS WATER DISS REC (µG/L) (04095)
	SUSSEX COUNTY NJ									
370215	<.003	<.003	<.004	<.004	<.002	<.002	<.002	<.001	<.002	<.003
370453	<.003	<.003	<.004	<.004	<.002	<.002	<.002	<.001	<.002	<.003
	--	--	--	--	--	--	--	--	--	--
370454	<.003	<.003	<.004	<.004	<.002	<.002	<.002	<.001	<.002	<.003
WARREN COUNTY NJ										
410266	<.003	<.003	<.004	<.004	<.002	<.002	<.002	<.001	<.002	<.003
410312	<.003	<.003	<.004	<.004	<.002	<.002	<.002	<.001	<.002	<.003
410384	<.003	<.003	<.004	<.004	<.002	<.002	<.002	<.001	<.002	<.003

WATER-QUALITY DATA, WATER YEAR OCTOBER 1999 TO SEPTEMBER 2000

LOCAL ID	LINDANE DIS- SOLVED (µG/L) (39341)	LIN- URON WATER FLTRD 0.7 µ GF, REC (µG/L) (82666)	MALA- THION, DIS- SOLVED (µG/L) (39532)	METHYL AZIN- PHOS WAT FLT 0.7 µ GF, REC (µG/L) (82686)	METOLA- CHLOR ESA FLTRD 0.7 µM GF REC (µG/L) (61043)	METOLA- CHLOR OA FLTRD 0.7 µM GF REC (µG/L) (61044)	METO- LACHLOR WATER DISSOLV (µG/L) (39415)	METRI- BUZIN WATER DISSOLV (µG/L) (82630)	NAPROP- AMIDE WATER FLTRD 0.7 µ GF, REC (µG/L) (82684)	P, P' DDE DISSOLV (µG/L) (34653)
	SUSSEX COUNTY NJ									
370215	<.004	<.002	<.005	<.001	<.05	<.05	<.002	<.004	<.003	<.006
370453	<.004	<.002	<.005	<.001	<.05	<.05	<.002	<.004	<.003	<.006
	--	--	--	--	--	--	--	--	--	--
370454	<.004	<.002	<.005	<.001	<.05	<.05	.005	<.004	<.003	<.006
WARREN COUNTY NJ										
410266	<.004	<.002	<.005	<.001	<.05	<.05	<.002	<.004	<.003	<.006
410312	<.004	<.002	<.005	<.010	1.44	.60	.005	<.004	<.003	<.006
410384	<.004	<.002	<.005	<.001	<.05	<.05	<.002	<.004	<.003	<.006

**GROUND-WATER DATA COLLECTED AT SPECIAL-STUDY SITES  
DELAWARE RIVER BASIN NAWQA PROJECT**

**GROUND WATER IN THE CLASTIC BEDROCK WITHIN THE VALLEY AND RIDGE PHYSIOGRAPHIC PROVINCE**

WATER-QUALITY DATA, WATER YEAR OCTOBER 1999 TO SEPTEMBER 2000

LOCAL ID	PENDI-METH-ALIN WAT FLT 0.7 µ GF, REC (µG/L) (82683)	PRO-METON, WATER, DISS, REC (µG/L) (04037)	PRON-AMIDE WATER FLTRD 0.7 µ GF, REC (µG/L) (82676)	PROPA-CHLOR, WATER, DISS, REC (µG/L) (04024)	PRO-PANIL WATER FLTRD 0.7 µ GF, REC (µG/L) (82679)	SI-MAZINE, WATER, DISS, REC (µG/L) (04035)	TEBU-THIURON WATER FLTRD 0.7 µ GF, REC (µG/L) (82670)	TER-BACIL WATER FLTRD 0.7 µ GF, REC (µG/L) (82665)	TER-BUTHYL-AZINE, WATER, DISS, REC (µG/L) (04022)	TRIAL-LATE WATER FLTRD 0.7 µ GF, REC (µG/L) (82678)
SUSSEX COUNTY NJ										
370215	<.004	<.018	<.003	<.007	<.004	<.005	<.010	<.007	--	<.001
370453	<.004	<.018	<.003	<.007	<.004	<.005	<.010	<.007	--	<.001
370454	<.004	<.018	<.003	<.007	<.004	<.005	<.010	<.007	--	<.001
WARREN COUNTY NJ										
410266	<.004	<.018	<.003	<.007	<.004	<.005	<.010	<.007	--	<.001
410312	<.004	<.018	<.003	<.007	<.004	<.005	<.010	<.007	--	<.001
410384	<.004	<.018	<.003	<.007	<.004	<.005	<.010	<.007	--	<.001

WATER-QUALITY DATA, WATER YEAR OCTOBER 1999 TO SEPTEMBER 2000

LOCAL ID	TRI-FLUR-ALIN WAT FLT 0.7 µ GF, REC (µG/L) (82661)	1,1,1-TRI-CHLORO-ETHANE TOTAL (µG/L) (34506)	1,1,2-TRI-CHLORO-ETHANE TOTAL (µG/L) (34511)	1,1-DI-CHLORO-ETHANE TOTAL (µG/L) (34496)	1,1-DI-CHLORO-ETHYL-ENE TOTAL (µG/L) (34501)	1,2-DI-CHLORO-PROPANE TOTAL (µG/L) (34541)	ACETONE WATER WHOLE TOTAL (µG/L) (81552)	BENZENE 123-TRI-METHYL-UNFLTRD RECOVER (µG/L) (77221)	BENZENE 1,2,4-TRI-CHLORO-WAT UNF REC (µG/L) (34551)	BENZENE 124-TRI-METHYL-UNFILT RECOVER (µG/L) (77222)
SUSSEX COUNTY NJ										
370215	<.002	E.01	<.06	<.07	<.04	<.07	<7	<.1	<.2	<.06
370453	<.002	<.03	<.06	<.07	<.04	<.07	<7	<.1	<.2	<.06
370454	<.002	<.03	<.06	<.07	<.04	<.07	<7	<.1	<.2	<.06
WARREN COUNTY NJ										
410266	<.002	<.03	<.06	<.07	<.04	<.07	<7	<.1	<.2	<.06
410312	<.002	<.03	<.06	<.07	<.04	E.05	<7	<.1	<.2	<.06
410384	<.002	<.03	<.06	<.07	<.04	<.07	<7	<.1	<.2	<.06

WATER-QUALITY DATA, WATER YEAR OCTOBER 1999 TO SEPTEMBER 2000

LOCAL ID	BENZENE 135-TRI-METHYL- WATER UNFLTRD REC (µG/L) (77226)	BENZENE 1,3-DI-CHLORO- WATER UNFLTRD REC (µG/L) (34566)	BENZENE 1,4-DI-CHLORO- WATER UNFLTRD REC (µG/L) (34571)	ISO-PROPYL-BENZENE WATER WHOLE REC (µG/L) (77223)	BENZENE N-BUTYL WATER UNFLTRD REC (µG/L) (77342)	BENZENE N-PROPYL WATER UNFLTRD REC (µG/L) (77224)	BENZENE O-DI-CHLORO- WATER UNFLTRD REC (µG/L) (34536)	BENZENE TOTAL REC (µG/L) (34030)	BROMO-FORM TOTAL REC (µG/L) (32104)	CARBON DI-SULFIDE WATER WHOLE TOTAL REC (µG/L) (77041)
SUSSEX COUNTY NJ										
370215	<.04	<.05	<.05	<.03	<.2	<.04	<.05	<.04	<.06	<.07
370453	<.04	<.05	<.05	<.03	<.2	<.04	<.05	<.04	<.06	<.07
370454	<.04	<.05	<.05	<.03	<.2	<.04	<.05	<.04	<.06	<.07
WARREN COUNTY NJ										
410266	<.04	<.05	<.05	<.03	<.2	<.04	<.05	<.04	<.06	<.07
410312	<.04	<.05	<.05	<.03	<.2	<.04	<.05	<.04	<.06	<.07
410384	<.04	<.05	<.05	<.03	<.2	<.04	<.05	<.04	<.06	<.07

**GROUND-WATER DATA COLLECTED AT SPECIAL-STUDY SITES  
DELAWARE RIVER BASIN NAWQA PROJECT**

**GROUND WATER IN THE CLASTIC BEDROCK WITHIN THE VALLEY AND RIDGE PHYSIOGRAPHIC PROVINCE**

WATER-QUALITY DATA, WATER YEAR OCTOBER 1999 TO SEPTEMBER 2000

LOCAL ID	CARBON TETRA- CHLO- RIDE TOTAL (µG/L) (32102)	CHLORO- BENZENE TOTAL (µG/L) (34301)	CHLORO- DI- BROMO- METHANE TOTAL (µG/L) (32105)	CHLORO- ETHANE TOTAL (µG/L) (34311)	CHLORO- FORM TOTAL (µG/L) (32106)	CIS-1,2 -DI- CHLORO- ETHENE WATER TOTAL (µG/L) (77093)	BROMO- DI- CHLORO- METHANE TOTAL (µG/L) (32101)	ETHER ETHYL WATER UNFLTRD RECOVER (µG/L) (81576)	ETHER TERT- BUTYL ETHYL UNFLTRD RECOVER (µG/L) (50004)	ETHER TERT- PENTYL METHYL UNFLTRD RECOVER (µG/L) (50005)
	SUSSEX COUNTY NJ									
370215	<.06	<.03	<.2	<.1	E.02	<.04	<.05	<.2	<.05	<.1
370453	<.06	<.03	<.2	<.1	<.05	<.04	<.05	<.2	<.05	<.1
370454	<.06	<.03	<.2	<.1	<.05	<.04	<.05	<.2	<.05	<.1
WARREN COUNTY NJ										
410266	<.06	<.03	<.2	<.1	<.05	<.04	<.05	<.2	<.05	<.1
410312	<.06	<.03	<.2	<.1	<.05	<.04	<.05	<.2	<.05	<.1
410384	<.06	<.03	<.2	<.1	E.03	<.04	<.05	<.2	<.05	<.1

WATER-QUALITY DATA, WATER YEAR OCTOBER 1999 TO SEPTEMBER 2000

LOCAL ID	ETHYL- BENZENE TOTAL (µG/L) (34371)	FREON- 113 WATER UNFLTRD REC (µG/L) (77652)	FURAN, TETRA- HYDRO- WATER UNFLTRD RECOVER (µG/L) (81607)	ISO- DURENE WATER UNFLTRD RECOVER (µG/L) (50000)	METHYL TERT- BUTYL ETHER WAT UNF REC (µG/L) (78032)	METHYL- CHLO- RIDE TOTAL (µG/L) (34418)	METHYL ENE CHLO- RIDE TOTAL (µG/L) (34423)	METHYL- ETHYL- WATER WHOLE TOTAL (µG/L) (81595)	METHYL ISO- BUTYL KETONE WAT. WH. TOTAL (µG/L) (78133)	META/ PARA- XYLENE WATER UNFLTRD REC (µG/L) (85795)
	SUSSEX COUNTY NJ									
370215	<.03	<.06	<2	<.2	<.2	<.5	<.4	<2	<.4	<.06
370453	<.03	<.06	<2	<.2	<.2	<.5	<.4	<2	<.4	<.06
370454	<.03	<.06	<2	<.2	<.2	<.5	<.4	<2	<.4	<.06
WARREN COUNTY NJ										
410266	<.03	<.06	<2	<.2	<.2	<.5	<.4	<2	<.4	<.06
410312	<.03	<.06	<2	<.2	.3	<.5	<.4	<2	<.4	<.06
410384	<.03	<.06	<2	<.2	E.1	<.5	<.4	<2	<.4	<.06

WATER-QUALITY DATA, WATER YEAR OCTOBER 1999 TO SEPTEMBER 2000

LOCAL ID	NAPHTH- ALENE TOTAL (µG/L) (34696)	O- CHLORO- TOLUENE WATER WHOLE TOTAL (µG/L) (77275)	O- XYLENE WATER WHOLE TOTAL (µG/L) (77135)	P-ISO- PROPYL- TOLUENE WATER WHOLE REC (µG/L) (77356)	STYRENE TOTAL (µG/L) (77128)	TETRA- CHLORO- ETHYL- ENE TOTAL (µG/L) (34475)	TOLUENE O-ETHYL WATER UNFLTRD RECOVER (µG/L) (77220)	TOLUENE TOTAL (µG/L) (34010)	TRI- CHLORO- ETHYL- ENE TOTAL (µG/L) (39180)
	SUSSEX COUNTY NJ								
370215	<.2	<.04	<.04	<.07	<.04	<.1	<.06	<.05	<.04
370453	<.2	<.04	<.04	<.07	<.04	<.1	<.06	<.05	<.04
370454	<.2	<.04	<.04	<.07	<.04	<.1	<.06	<.05	<.04
WARREN COUNTY NJ									
410266	<.2	<.04	<.04	<.07	<.04	<.1	<.06	<.05	<.04
410312	<.2	<.04	<.04	<.07	<.04	<.1	<.06	<.05	<.04
410384	<.2	<.04	<.04	<.07	<.04	.2	<.06	<.05	<.04

**GROUND-WATER DATA COLLECTED AT SPECIAL-STUDY SITES  
DELAWARE RIVER BASIN NAWQA PROJECT**

**GROUND WATER IN THE CLASTIC BEDROCK WITHIN THE VALLEY AND RIDGE PHYSIOGRAPHIC PROVINCE**

WATER-QUALITY DATA, WATER YEAR OCTOBER 1999 TO SEPTEMBER 2000

LOCAL ID	TRI- CHLORO- FLUORO- METHANE TOTAL (µG/L) (34488)	ALPHA RADIO- WATER DISS AS TH-230 (PCI/L) (04126)	GROSS BETA, DIS- SOLVED (PCI/L) AS CS-137 (03515)	RADIUM DIS- 226, SOLVED (PCI/L) DIS- SOLVED (PCI/L) (09503)	RADIUM DIS- 228 SOLVED (PCI/L) AS RA-228 (81366)	RA-224 WATER FLTRD (PCI/L) (50833)	RADON 222 TOTAL (PCI/L) (82303)	URANIUM NATURAL DIS- SOLVED (µG/L AS U) (22703)	MEDIUM CODE
	SUSSEX COUNTY NJ								
370215	<.09	<3.00	5.18	<1.00	<1.00	<1.00	5310	<1	6
370453	<.09	3.56	<4.00	<1.00	<1.00	<1.00	1440	<1	6
	--	<3.00	<4.00	<1.00	<1.00	<1.00	--	--	S
370454	<.09	<3.00	<4.00	<1.00	<1.00	<1.00	957	2	6
WARREN COUNTY NJ									
410266	<.09	<3.00	<4.00	<1.00	<1.00	<1.00	1080	<1	6
410312	<.09	<3.00	<4.00	<1.00	<1.00	<1.00	1330	2	6
410384	<.09	<3.00	<4.00	<1.00	<1.00	<1.00	2970	<1	6

WATER-QUALITY CONTROL DATA

As part of the water-quality sampling for the DELR NAWQA, an extensive quality-assurance plan was executed to ensure the integrity of the sample results. Quality-control samples were collected as blanks, including ambient, trip, source solution, and equipment; replicates; and spikes. These quality-control samples were analyzed for nutrients, major ions, trace elements, dissolved and volatile organic compounds, pesticides and their metabolites, radioisotopes, and bacteria. Source-solution blanks were analyzed for volatile organic compounds (VOCs), and spikes were analyzed for pesticides and VOCs.

The following summarizes the quality-control sample results: Replicate samples were collected at 15 separate sample sites for one or more of the above chemical groups. All replicate closely reproduced the results for the environmental samples. Results from replicate samples are included within the water-quality tables on pages 625-646. Thirty-one blank samples were collected. Concentrations of all constituents analyzed in the blank samples were less than the method detection limits, except for total toluene, which had three detections at E 0.01, E 0.01, and E 0.02 µG/L. As a result, toluene was censored for results below the lab reporting limit of 0.05 µG/L, and was assigned a value of <0.05 µG/L. The two pesticide spikes of 100-µL/1-L liter of sample had recoveries between 96 and 114 percent. The two VOC spikes of 20-µL/40-mL had recoveries between 91 and 109 percent. For the bacteriological samples, 69 quality-control samples were run (30 equipment blanks, 30 final blanks run between each test series, and 9 replicates). Two of the final blanks had a total coliform count of 1 colony/100 mls, indicating incomplete rinsing between dilutions. Both of the series with the final blank detections had high coliform counts. The differences between the sets of 9 replicates were within five percent.