

## SCHUYLKILL RIVER BASIN

## 01469500 LITTLE SCHUYLKILL RIVER AT TAMAQUA, PA

**LOCATION.**--Lat 40°48'25", long 75°58'20", Schuylkill County, Hydrologic Unit 02040203, on left bank along State Highway 309, 0.6 mi upstream from Tamaqua, and 0.8 mi upstream from Panther Creek.

**DRAINAGE AREA.**--42.9 mi<sup>2</sup>.

**PERIOD OF RECORD.**--October 1919 to current year. June 1916 to September 1919, gage heights and discharge measurements only, in reports of Water Supply Commission of Pennsylvania.

**REVISED RECORDS.**--WSP 756: Drainage area. WSP 971: 1942. WSP 1302: 1922, 1926-30. WSP 1432: 1920-21, 1933.

**GAGE.**--Water-stage recorder and broad-crested weir. Datum of gage is 817.48 ft above sea level. Prior to June 21, 1929, nonrecording gage at site 3,600 ft downstream at datum 28.64 ft lower.

**REMARKS.**--Records good except those for estimated daily discharges, which are poor. Flow regulated by Still Creek Reservoir (station 01469200) 6.5 mi upstream. Several measurements of water temperature were made during the year. Satellite telemetry at station.

**COOPERATION.**--Records of diversion and change in contents of Still Creek Reservoir provided by the Borough of Tamaqua.

DISCHARGE, CUBIC FEET PER SECOND, WATER YEAR OCTOBER 1999 TO SEPTEMBER 2000  
DAILY MEAN VALUES

DAY	OCT	NOV	DEC	JAN	FEB	MAR	APR	MAY	JUN	JUL	AUG	SEP
1	114	28	93	54	e40	300	173	79	101	111	155	43
2	94	72	85	52	e38	245	154	82	93	100	158	42
3	83	e120	80	52	e37	194	137	74	85	93	91	30
4	94	e90	76	56	e34	160	167	69	76	91	82	26
5	94	77	72	63	e32	140	137	67	72	83	63	23
6	76	72	79	51	e31	122	114	65	150	73	54	20
7	67	67	74	46	e30	109	136	61	113	66	54	18
8	62	62	64	43	e30	103	167	57	83	59	47	17
9	60	59	58	41	e29	96	246	53	70	55	44	17
10	84	61	58	76	e28	91	214	157	63	56	40	17
11	86	58	59	112	e28	104	213	245	59	51	38	17
12	70	50	53	88	e29	172	208	160	87	45	39	17
13	67	47	51	84	e33	131	191	142	93	41	42	30
14	70	46	83	75	67	115	179	146	83	38	37	21
15	63	43	129	72	77	111	172	116	72	59	35	25
16	59	40	116	e70	63	107	168	102	69	53	30	20
17	56	37	108	e60	58	175	134	94	62	43	26	18
18	56	34	103	e56	59	138	109	94	65	38	26	17
19	50	34	97	e54	62	127	89	138	62	34	25	24
20	51	34	98	e58	56	122	82	136	55	33	23	38
21	49	37	104	e54	52	201	90	126	65	29	21	25
22	45	35	90	e52	51	608	97	140	177	29	20	20
23	43	33	82	e50	54	478	96	175	106	27	21	18
24	39	35	77	e49	65	352	86	286	91	27	22	18
25	37	44	71	e48	97	275	82	307	98	25	21	18
26	34	69	70	e50	155	222	78	252	136	25	20	23
27	33	186	68	e48	184	188	78	208	144	26	20	22
28	32	134	65	e47	440	357	76	176	128	24	22	18
29	31	114	62	e44	372	277	84	150	131	24	23	17
30	29	103	60	e46	---	236	84	128	134	32	21	16
31	28	---	57	e43	---	202	---	112	---	67	19	---
TOTAL	1856	1921	2442	1794	2331	6258	4041	4197	2823	1557	1339	675
MEAN	59.9	64.0	78.8	57.9	80.4	202	135	135	94.1	50.2	43.2	22.5
MAX	114	186	129	112	440	608	246	307	177	111	158	43
MIN	28	28	51	41	28	91	76	53	55	24	19	16
(†)	3.3	3.2	3.2	3.3	2.9	3.2	3.1	3.2	3.3	3.0	2.8	2.9

† Diversion from Still Creek Reservoir, equivalent in cubic feet per second.

e Estimated.

SCHUYLKILL RIVER BASIN

01469500 LITTLE SCHUYLKILL RIVER AT TAMAQUA, PA--Continued

STATISTICS OF MONTHLY MEAN DATA FOR WATER YEARS 1933 - 2000, BY WATER YEAR (WY) (SINCE REGULATION)

	OCT	NOV	DEC	JAN	FEB	MAR	APR	MAY	JUN	JUL	AUG	SEP
MEAN	50.0	82.1	103	91.0	95.6	142	142	108	65.2	50.6	39.2	43.5
MAX	317	242	321	338	242	365	475	315	430	394	226	259
(WY)	1977	1952	1997	1996	1951	1936	1993	1989	1972	1947	1933	1933
MIN	5.82	7.81	12.2	8.57	26.6	42.5	46.6	21.1	14.6	8.87	6.25	6.46
(WY)	1964	1942	1981	1981	1934	1985	1985	1941	1941	1965	1944	1964

SUMMARY STATISTICS FOR 1999 CALENDAR YEAR FOR 2000 WATER YEAR WATER YEARS 1933 - 2000

ANNUAL TOTAL	23256.6			31234			84.2					
ANNUAL MEAN	63.7			85.3			155					
HIGHEST ANNUAL MEAN							33.8					
LOWEST ANNUAL MEAN							2790					
HIGHEST DAILY MEAN	798			Jan 24			608			Mar 22		
LOWEST DAILY MEAN	5.0			Sep 1			16			Sep 30		
ANNUAL SEVEN-DAY MINIMUM	5.7			Aug 30			18			Sep 6		
INSTANTANEOUS PEAK FLOW							651			Mar 21		
INSTANTANEOUS PEAK STAGE							4.13			Mar 22		
INSTANTANEOUS LOW FLOW										11.10		
10 PERCENT EXCEEDS	125			169			177					
50 PERCENT EXCEEDS	50			65			51					
90 PERCENT EXCEEDS	8.6			25			13					

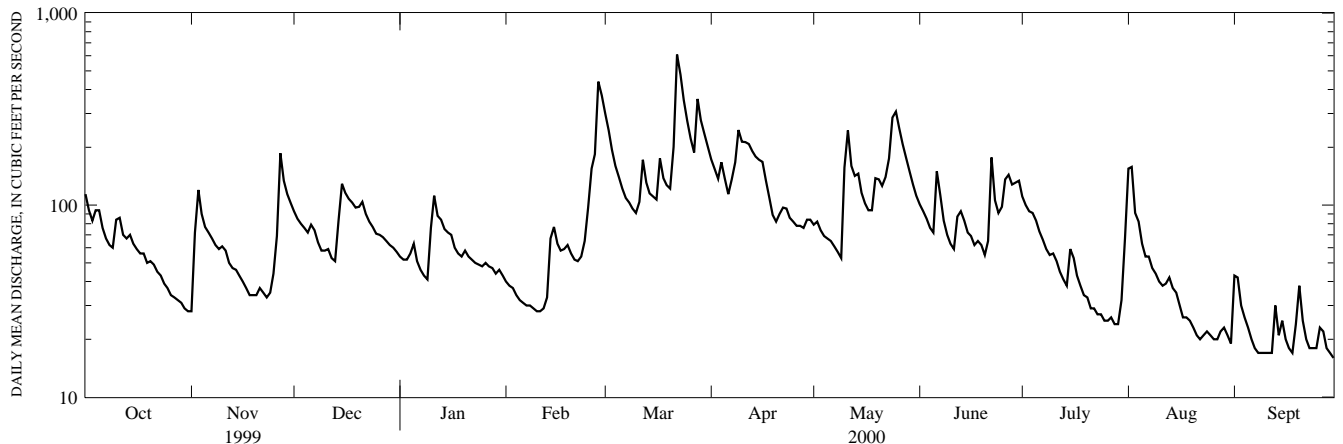
STATISTICS OF MONTHLY MEAN DATA FOR WATER YEARS 1920 - 1932, BY WATER YEAR (WY) (PRIOR TO REGULATION)

	OCT	NOV	DEC	JAN	FEB	MAR	APR	MAY	JUN	JUL	AUG	SEP
MEAN	73.0	96.5	101	78.7	103	188	143	112	74.4	57.0	33.7	37.7
MAX	227	308	241	266	344	410	227	208	209	185	81.5	152
(WY)	1928	1927	1928	1924	1925	1920	1928	1924	1922	1928	1927	1924
MIN	6.67	6.74	7.99	13.3	25.7	88.5	72.6	32.8	27.3	14.5	10.3	6.66
(WY)	1931	1931	1931	1931	1931	1931	1926	1926	1921	1923	1923	1932

SUMMARY STATISTICS WATER YEARS 1920 - 1932

ANNUAL TOTAL ANNUAL MEAN	91.5	
HIGHEST ANNUAL MEAN	145	1928
LOWEST ANNUAL MEAN	42.3	1931
HIGHEST DAILY MEAN	3600	Sep 30 1924
LOWEST DAILY MEAN	3.0	Dec 23 1930
ANNUAL SEVEN DAY MINIMUM	3.8	Dec 14 1930
INSTANTANEOUS PEAK FLOW	5000	Sep 30 1924
INSTANTANEOUS LOW FLOW	1.8	Dec 18 1931
ANNUAL RUNOFF (CFSM)	2.13	
ANNUAL RUNOFF (INCHES)	28.97	
10 PERCENT EXCEEDS	201	
50 PERCENT EXCEEDS	54	
90 PERCENT EXCEEDS	12	

a From rating curve extended above 3,200 ft<sup>3</sup>/s on basis of contracted-opening measurement of peak flow.



1-YEAR HYDROGRAPH  
OCTOBER 1, 1999 TO SEPTEMBER 30, 2000