

## LACKAWAXEN RIVER BASIN

## 01431500 LACKAWAXEN RIVER AT HAWLEY, PA

**LOCATION.**--Lat 41°28'34", long 75°10'21", Wayne County, Hydrologic Unit 02040103, on left bank at bridge on Church Street in Hawley, 700 ft upstream from Wallenpaupack Creek, and 3,000 ft downstream from Middle Creek.

**DRAINAGE AREA.**--290 mi<sup>2</sup>.

## WATER-DISCHARGE RECORDS

**PERIOD OF RECORD.**--July 1908 to September 1917, August 1938 to current year. Monthly discharge only for some periods, published in WSP 1302. October 1917 to December 1919, gage heights and discharge measurements only, in reports of Water Supply Commission of Pennsylvania.

**REVISED RECORDS.**--WSP 1951: 1938-41. WSP 1302: 1909-17. WSP 1432: 1942. WSP 1502: 1956.

**GAGE.**--Water-stage recorder and crest-stage gage. Datum of gage is 869.00 ft above sea level. Prior to 1938, nonrecording gage at same site and datum, and Aug 20, 1955, to Feb. 13, 1956, nonrecording gage at site 1,000 ft downstream at same datum.

**REMARKS.**--Records good except those for estimated daily discharges, which are poor. Regulation since 1960 by Prompton Reservoir (station 01428900) 14.9 mi upstream, and at high flow since 1959 by General Edgar Jadwin Reservoir (station 01429400) 13.0 mi upstream. Several measurements of water temperature were made during the year. Satellite telemetry at station.

**EXTREMES OUTSIDE PERIOD OF RECORD.**--Flood of 1936 reached a stage of 19.1 ft at present site, 13.9 ft at former site, from floodmarks, discharge, 27,600 ft<sup>3</sup>/s.

DISCHARGE, CUBIC FEET PER SECOND, WATER YEAR OCTOBER 1999 TO SEPTEMBER 2000  
DAILY MEAN VALUES

DAY	OCT	NOV	DEC	JAN	FEB	MAR	APR	MAY	JUN	JUL	AUG	SEP
1	228	134	e540	225	e230	e2400	616	467	389	368	759	89
2	175	146	e470	220	e220	1810	537	435	352	301	493	129
3	138	370	422	249	e200	e1400	499	398	379	266	311	272
4	197	326	401	296	e190	e1100	747	353	320	280	345	141
5	328	263	380	395	e180	1000	1130	333	347	240	249	126
6	259	231	382	316	e170	927	845	305	2020	196	197	106
7	208	206	392	278	e170	846	673	282	3990	170	475	95
8	176	188	337	246	e160	929	586	275	1980	167	381	90
9	173	179	303	236	e160	1020	1220	259	1160	159	272	86
10	242	172	297	325	e170	1090	1280	340	800	165	231	83
11	383	171	286	984	e180	1130	1260	756	644	153	202	82
12	308	161	257	740	e190	e3700	1050	595	1010	152	190	88
13	248	155	248	559	e230	e2500	877	731	1040	135	190	466
14	268	150	300	e420	e360	e1500	753	814	1160	126	171	384
15	272	151	812	e380	e760	1090	657	671	1090	233	178	283
16	237	144	897	e350	e700	e920	597	511	864	398	184	254
17	210	139	716	e290	e600	1820	557	420	679	282	158	197
18	195	135	565	e280	e540	1500	1430	397	688	205	140	164
19	173	132	477	e270	e520	1110	1650	1070	735	169	128	147
20	181	131	433	e250	e470	899	1180	1790	616	e150	118	218
21	218	133	597	e260	e430	769	1160	1460	480	e140	109	207
22	204	131	531	e260	e400	671	1820	1150	690	e140	103	165
23	197	127	e460	e250	e420	586	1550	1660	595	e140	106	142
24	193	128	e400	e250	e580	518	1290	2160	441	e130	124	132
25	180	145	e350	e230	e800	466	1020	2630	381	e120	119	124
26	169	277	e330	e220	e1200	502	852	1680	568	e110	108	127
27	164	2780	e320	e250	1830	474	715	1140	677	e120	102	135
28	154	1660	e290	e240	4740	1160	703	860	584	123	98	125
29	149	945	e280	e220	e3500	1380	667	695	446	114	95	113
30	143	713	261	e210	---	955	564	574	455	127	91	106
31	136	---	236	e250	---	748	---	461	---	315	88	---
TOTAL	6506	10723	12970	9949	20300	36920	28485	25672	25580	5894	6515	4876
MEAN	210	357	418	321	700	1191	950	828	853	190	210	163
MAX	383	2780	897	984	4740	3700	1820	2630	3990	398	759	466
MIN	136	127	236	210	160	466	499	259	320	110	88	82

e Estimated.

LACKAWAXEN RIVER BASIN

01431500 LACKAWAXEN RIVER AT HAWLEY, PA--Continued

STATISTICS OF MONTHLY MEAN DATA FOR WATER YEARS 1960 - 2000, BY WATER YEAR (WY) (SINCE REGULATION)

	OCT	NOV	DEC	JAN	FEB	MAR	APR	MAY	JUN	JUL	AUG	SEP
MEAN	244	447	541	507	577	1008	1015	617	353	181	132	184
MAX (WY)	1056	1643	1671	1915	1434	2651	2392	1826	1475	680	522	1368
MIN (WY)	1977	1973	1997	1996	1976	1977	1994	1989	1972	1984	1994	1987
MIN (WY)	20.8	25.7	62.6	92.0	133	280	348	196	63.6	29.7	26.1	20.5
(WY)	1965	1965	1999	1981	1980	1981	1988	1962	1965	1965	1999	1964

SUMMARY STATISTICS	FOR 1999 CALENDAR YEAR	FOR 2000 WATER YEAR	WATER YEARS 1960 - 2000
ANNUAL TOTAL	118353	194390	
ANNUAL MEAN	324	531	483
HIGHEST ANNUAL MEAN			761 1973
LOWEST ANNUAL MEAN			204 1965
HIGHEST DAILY MEAN	3280	Jan 25	4740 Feb 28 11600 Mar 15 1986
LOWEST DAILY MEAN	14	Aug 12,13	82 Sep 11 14 Aug 12,13 1999
ANNUAL SEVEN-DAY MINIMUM	15	Aug 7	90 Sep 6 15 Aug 7 1999
INSTANTANEOUS PEAK FLOW			5260 Feb 28 16400 Jun 29 1973
INSTANTANEOUS PEAK STAGE			8.18 Feb 28 13.00 Jun 29 1973
10 PERCENT EXCEEDS	705		1160 1120
50 PERCENT EXCEEDS	216		310 250
90 PERCENT EXCEEDS	27		129 55

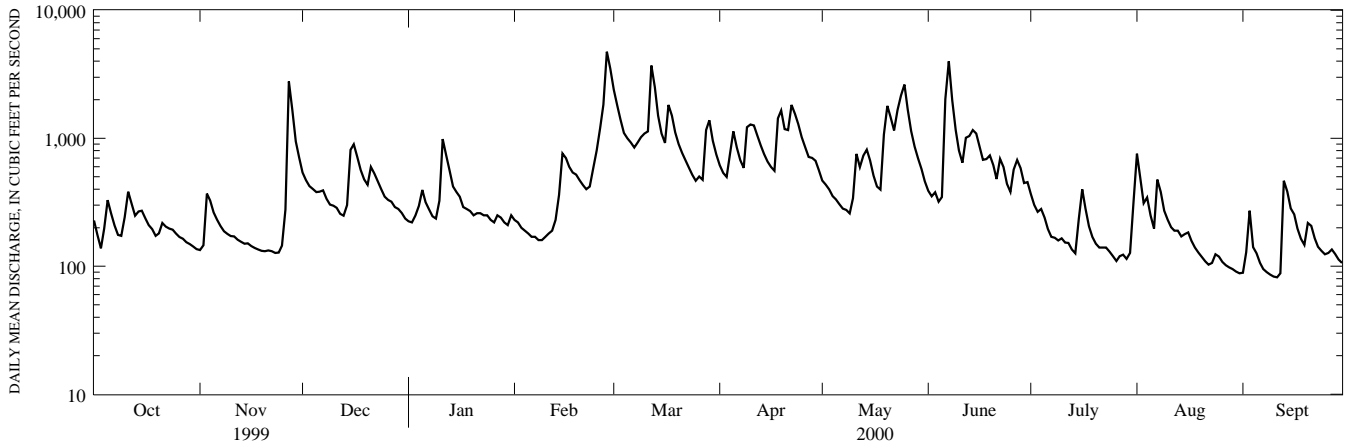
STATISTICS OF MONTHLY MEAN DATA FOR WATER YEARS 1909-17, 1939-59, BY WATER YEAR (WY) (PRIOR TO REGULATION)

	OCT	NOV	DEC	JAN	FEB	MAR	APR	MAY	JUN	JUL	AUG	SEP
MEAN	239	388	482	527	555	1019	1117	629	296	236	209	156
MAX (WY)	1773	1116	1166	1235	1279	2985	2644	1531	680	1246	2485	601
MIN (WY)	1956	1956	1951	1913	1909	1945	1940	1942	1916	1947	1955	1945
MIN (WY)	25.4	28.6	89.0	116	180	353	280	166	79.7	38.2	32.1	24.6
(WY)	1910	1910	1909	1944	1940	1915	1946	1941	1959	1955	1957	1909

SUMMARY STATISTICS WATER YEARS 1909 - 1917 1939 - 1959

ANNUAL MEAN	487	
HIGHEST ANNUAL MEAN	748	1952
LOWEST ANNUAL MEAN	316	1917
HIGHEST DAILY MEAN	28100	May 23 1942
LOWEST DAILY MEAN	8.0	Sep 8 1909
ANNUAL SEVEN DAY MINIMUM	12	Sep 4 1909
INSTANTANEOUS PEAK FLOW	a51900	Aug 19 1955
INSTANTANEOUS PEAK STAGE	b24.80	Aug 19 1955
ANNUAL RUNOFF (CFSM)	1.68	
ANNUAL RUNOFF (INCHES)	22.83	
10 PERCENT EXCEEDS	1110	
50 PERCENT EXCEEDS	242	
90 PERCENT EXCEEDS	49	

a From rating curve extended above 12,000 ft<sup>3</sup>/s on basis of slope-area measurement at gage height 20.1 ft.  
 b From floodmark.



1-YEAR HYDROGRAPH  
 OCTOBER 1, 1999 TO SEPTEMBER 30, 2000