

## LACKAWAXEN RIVER BASIN

## 01429500 DYBERRY CREEK NEAR HONESDALE, PA

**LOCATION.**--Lat 41°36'26", long 75°16'03", Wayne County, Hydrologic Unit 02040103, on right bank 180 ft upstream from unnamed tributary, 1,700 ft downstream from General Edgar Jadwin Reservoir, 2.1 mi north of Honesdale, and 2.6 mi upstream from mouth.

**DRAINAGE AREA.**--64.6 mi<sup>2</sup>.

**PERIOD OF RECORD.**--October 1943 to current year. Published as "*at Dyberry*" October 1943 to September 1959 and as "*near Dyberry*" October 1959 to September 1961.

**REVISED RECORDS.**--WSP 1382: 1947(M), 1950(M), 1951-53.

**GAGE.**--Water-stage recorder. Datum of gage is 970.70 ft above sea level. Prior to Oct. 1, 1957, nonrecording gage at site 1.9 mi upstream at datum 13.70 ft higher.

**REMARKS.**--Records good except those for estimated daily discharges, which are poor. Flow regulated since October 1959 by General Edgar Jadwin Reservoir (station 01429400) 1,700 ft upstream. Several measurements of water temperature were made during the year. Satellite and landline telemetry at station.

**EXTREMES OUTSIDE PERIOD OF RECORD.**--Flood of May 23, 1942 reached a stage of 15.86 ft, from floodmarks, site and datum then in use, discharge not determined.

DISCHARGE, CUBIC FEET PER SECOND, WATER YEAR OCTOBER 1999 TO SEPTEMBER 2000  
DAILY MEAN VALUES

DAY	OCT	NOV	DEC	JAN	FEB	MAR	APR	MAY	JUN	JUL	AUG	SEP
1	53	33	137	59	62	460	161	126	110	65	89	16
2	37	36	115	59	53	395	143	118	98	56	69	19
3	30	113	107	65	48	302	141	106	92	60	77	26
4	89	80	102	83	48	242	275	91	91	66	121	39
5	97	63	97	104	48	224	296	87	94	55	61	29
6	71	55	101	71	44	216	214	78	297	44	48	21
7	54	50	100	66	44	208	178	72	570	38	137	18
8	44	45	85	59	40	252	158	78	251	34	77	16
9	44	43	76	58	39	268	325	71	174	32	54	15
10	74	42	74	100	40	279	281	182	136	31	47	15
11	98	42	75	252	44	282	293	363	112	28	41	15
12	71	40	65	150	47	886	247	205	163	26	38	18
13	59	39	62	e115	42	546	216	266	168	24	45	238
14	77	38	79	e96	102	311	190	298	238	23	40	108
15	66	37	214	e95	247	242	169	213	227	74	44	89
16	56	37	208	95	186	206	154	168	185	96	40	73
17	51	35	156	e65	138	403	147	138	148	60	35	50
18	48	33	127	66	105	292	447	125	139	41	31	41
19	43	33	110	69	113	232	397	348	168	34	27	43
20	48	33	104	65	104	199	261	466	143	30	24	111
21	60	33	166	63	91	173	282	335	106	26	22	72
22	51	33	131	61	86	157	420	264	165	26	21	52
23	49	32	108	62	100	139	310	446	145	24	23	42
24	47	33	e88	61	e130	125	275	669	103	22	37	37
25	44	38	81	55	e210	115	222	710	89	21	30	35
26	41	173	84	59	363	155	191	361	117	20	25	36
27	38	1060	79	56	434	127	170	254	98	25	22	40
28	37	402	66	52	1150	425	186	205	91	26	20	33
29	34	215	69	53	865	349	183	183	75	24	19	29
30	33	170	65	52	---	236	150	157	80	54	18	27
31	33	---	64	66	---	192	---	128	---	128	17	---
TOTAL	1677	3116	3195	2432	5023	8638	7082	7311	4673	1313	1399	1403
MEAN	54.1	104	103	78.5	173	279	236	236	156	42.4	45.1	46.8
MAX	98	1060	214	252	1150	886	447	710	570	128	137	238
MIN	30	32	62	52	39	115	141	71	75	20	17	15

e Estimated.

LACKAWAXEN RIVER BASIN

01429500 DYBERRY CREEK NEAR HONESDALE, PA--Continued

STATISTICS OF MONTHLY MEAN DATA FOR WATER YEARS 1960 - 2000, BY WATER YEAR (WY) (SINCE REGULATION)

	OCT	NOV	DEC	JAN	FEB	MAR	APR	MAY	JUN	JUL	AUG	SEP
MEAN	58.0	111	125	116	143	234	242	142	76.4	43.4	30.6	41.7
MAX	292	413	388	402	466	552	572	397	291	170	145	281
(WY)	1977	1973	1997	1996	1981	1977	1993	1989	1972	1973	1994	1987
MIN	4.17	5.48	17.4	20.8	20.2	73.0	83.6	43.3	12.0	3.23	5.21	2.26
(WY)	1965	1965	1999	1981	1980	1981	1985	1965	1962	1962	1999	1980

SUMMARY STATISTICS FOR 1999 CALENDAR YEAR FOR 2000 WATER YEAR WATER YEARS 1960 - 2000

ANNUAL TOTAL		30216.6		47262								
ANNUAL MEAN		82.8		129						113		
HIGHEST ANNUAL MEAN										186		1973
LOWEST ANNUAL MEAN										51.4		1965
HIGHEST DAILY MEAN				1060	Nov 27		1150	Feb 28		2460	Jan 20	1996
LOWEST DAILY MEAN				2.8	Aug 13		15	Sep 9-11		1.2	Jul 29	1970
ANNUAL SEVEN-DAY MINIMUM				3.2	Aug 7		17	Sep 6		1.8	Oct 5	1980
INSTANTANEOUS PEAK FLOW							1230	Feb 28		2600	Jan 20	1996
INSTANTANEOUS PEAK STAGE							5.42	Feb 28		7.32	Jan 20	1996
INSTANTANEOUS LOW FLOW										a.00	Oct 2	1968
10 PERCENT EXCEEDS				169			281			250		
50 PERCENT EXCEEDS				54			78			56		
90 PERCENT EXCEEDS				5.5			29			10		

STATISTICS OF MONTHLY MEAN DATA FOR WATER YEARS 1944 - 1959, BY WATER YEAR (WY) (PRIOR TO REGULATION)

	OCT	NOV	DEC	JAN	FEB	MAR	APR	MAY	JUN	JUL	AUG	SEP
MEAN	53.7	110	128	119	109	236	262	145	55.8	68.9	45.7	30.5
MAX	348	263	255	248	227	539	628	345	127	293	339	90.8
(WY)	1956	1946	1953	1952	1951	1945	1958	1947	1946	1952	1955	1952
MIN	10.2	18.8	20.4	29.0	47.4	91.8	59.9	44.4	19.2	8.16	5.82	5.30
(WY)	1948	1947	1947	1944	1958	1949	1946	1955	1959	1955	1953	1953

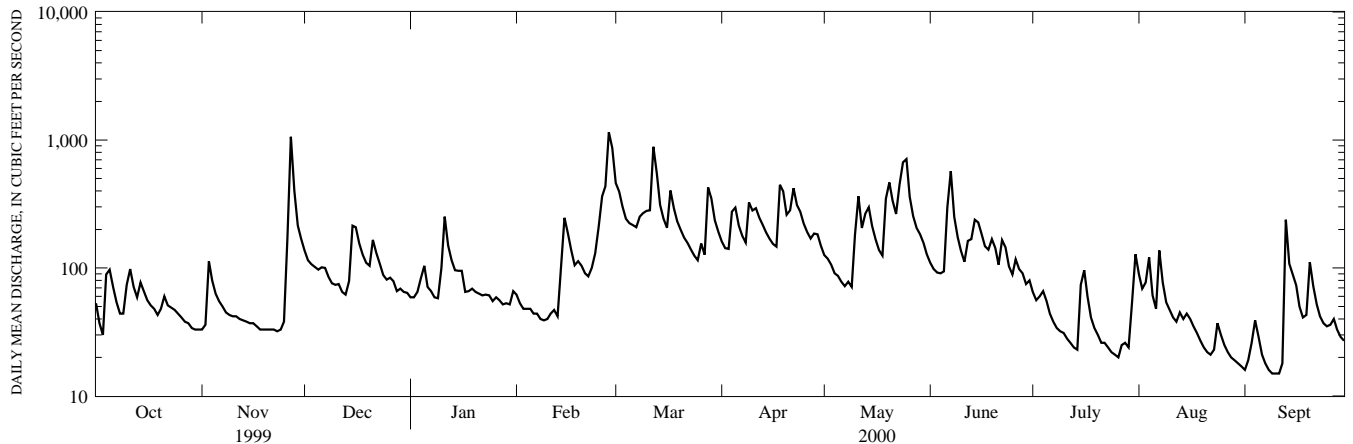
SUMMARY STATISTICS WATER YEARS 1944 - 1959

ANNUAL MEAN		114										
HIGHEST ANNUAL MEAN		170				1952						
LOWEST ANNUAL MEAN		77.2				1957						
HIGHEST DAILY MEAN		5880			Jul 10	1952						
LOWEST DAILY MEAN		2.0			Oct 5	1953						
ANNUAL SEVEN DAY MINIMUM		2.3			Sep 29	1953						
INSTANTANEOUS PEAK FLOW		b15500			Jul 10	1952						
INSTANTANEOUS PEAK STAGE		c14.60			Jul 10	1952						
ANNUAL RUNOFF (CFSM)		1.76										
ANNUAL RUNOFF (INCHES)		23.91										
10 PERCENT EXCEEDS		252										
50 PERCENT EXCEEDS		54										
90 PERCENT EXCEEDS		9.4										

a Result of shutoff at General Jadwin Reservoir.

b From rating curve extended above 2,500 ft<sup>3</sup>/s on basis of slope-area measurement at gage height 13.78 ft.

c Site and datum then in use.



1-YEAR HYDROGRAPH  
OCTOBER 1, 1999 TO SEPTEMBER 30, 2000