

LACKAWAXEN RIVER BASIN

01429000 WEST BRANCH LACKAWAXEN RIVER AT PROMPTON, PA

LOCATION.--Lat 41°35'14", long 75°19'38", Wayne County, Hydrologic Unit 02040103, on left bank 500 ft downstream from Prompton Reservoir, 1,500 ft upstream from bridge on U.S. Highway 6 at Prompton, and 2,000 ft upstream from Van Auken Creek.

DRAINAGE AREA.--59.7 mi².

WATER-DISCHARGE RECORDS

PERIOD OF RECORD.--August 1944 to current year. Prior to October 1952, published as Lackawaxen River at Prompton.

REVISED RECORDS.--WSP 1432: 1948-49. WDR PA-71-1: 1970(M).

GAGE.--Water-stage recorder. Datum of gage is 1,083.78 ft above sea level.

REMARKS.--Records good except those for estimated daily discharges, which are poor. Flow regulated since 1960 by Prompton Reservoir (station 01428900) 500 ft upstream. Satellite and landline telemetry at station.

EXTREMES OUTSIDE PERIOD OF RECORD.--Flood of May 23, 1942 reached a stage of 16.7 ft, from floodmark, discharge not determined.

DISCHARGE, CUBIC FEET PER SECOND, WATER YEAR OCTOBER 1999 TO SEPTEMBER 2000
DAILY MEAN VALUES

DAY	OCT	NOV	DEC	JAN	FEB	MAR	APR	MAY	JUN	JUL	AUG	SEP
1	44	40	e110	50	47	484	179	101	103	57	93	30
2	45	40	93	48	46	390	155	96	90	50	99	29
3	41	64	84	50	46	320	139	90	84	45	88	28
4	48	77	79	58	46	260	211	82	71	43	104	29
5	74	71	76	79	44	224	314	75	66	40	89	32
6	70	66	75	73	43	205	260	71	132	38	72	e32
7	60	60	77	65	42	195	209	66	282	36	115	e31
8	53	54	70	59	41	220	177	62	255	35	110	31
9	50	50	64	56	40	283	257	59	201	34	88	29
10	59	49	60	65	40	325	273	70	155	32	77	28
11	80	46	59	179	40	309	262	146	121	31	69	27
12	77	43	55	179	41	729	234	147	143	30	60	27
13	68	41	53	151	42	568	209	165	157	29	55	102
14	76	41	55	120	48	370	184	200	200	27	53	130
15	77	40	101	e89	126	278	164	180	215	27	61	108
16	68	e39	159	e82	166	228	149	144	192	32	62	97
17	61	e38	160	e74	159	299	141	116	160	36	55	79
18	55	37	135	e68	140	290	318	101	133	37	49	64
19	49	36	115	e64	132	236	394	191	137	36	45	54
20	49	e35	102	e62	125	198	308	334	122	34	41	72
21	55	34	110	e59	112	171	280	324	101	33	38	73
22	58	e34	108	e56	101	149	369	277	125	31	37	59
23	61	33	94	e55	100	131	325	379	118	30	36	49
24	59	e32	80	e53	118	117	276	570	96	28	38	45
25	56	e35	68	e52	178	108	225	577	84	27	38	41
26	57	e50	64	e50	276	121	189	428	85	26	36	39
27	57	e300	62	e55	342	119	163	311	79	26	35	39
28	55	e190	58	51	875	275	151	240	76	26	34	38
29	51	e140	57	49	739	351	137	193	66	25	33	37
30	47	e120	53	46	---	273	118	153	62	27	32	36
31	44	---	52	47	---	217	---	123	---	68	31	---
TOTAL	1804	1935	2588	2244	4295	8443	6770	6071	3911	1076	1873	1515
MEAN	58.2	64.5	83.5	72.4	148	272	226	196	130	34.7	60.4	50.5
MAX	80	300	160	179	875	729	394	577	282	68	115	130
MIN	41	32	52	46	40	108	118	59	62	25	31	27

e Estimated.

LACKAWAXEN RIVER BASIN

01429000 WEST BRANCH LACKAWAXEN RIVER AT PROMPTON, PA--Continued

STATISTICS OF MONTHLY MEAN DATA FOR WATER YEARS 1961 - 2000, BY WATER YEAR (WY) (SINCE REGULATION)

	OCT	NOV	DEC	JAN	FEB	MAR	APR	MAY	JUN	JUL	AUG	SEP
MEAN	59.8	97.2	117	104	124	213	229	132	71.7	39.7	30.7	39.7
MAX	307	362	309	312	369	620	556	329	260	133	127	221
(WY)	1978	1973	1997	1979	1981	1977	1993	1989	1973	1984	1994	1987
MIN	7.15	7.65	17.3	19.1	19.0	60.4	86.5	45.8	17.5	9.66	6.82	6.67
(WY)	1965	1965	1999	1981	1980	1981	1988	1965	1962	1999	1999	1964

SUMMARY STATISTICS	FOR 1999 CALENDAR YEAR		FOR 2000 WATER YEAR		WATER YEARS 1961 - 2000	
ANNUAL TOTAL	28027.2		42525			
ANNUAL MEAN	76.8		116		105	
HIGHEST ANNUAL MEAN					176	
LOWEST ANNUAL MEAN					49.7	
HIGHEST DAILY MEAN	753		Jan 25		875	
LOWEST DAILY MEAN	5.0		Aug 7		25	
ANNUAL SEVEN-DAY MINIMUM	5.3		Aug 6		26	
INSTANTANEOUS PEAK FLOW					1010	
INSTANTANEOUS PEAK STAGE					3.66	
INSTANTANEOUS LOW FLOW					1.8	
10 PERCENT EXCEEDS	164		274		241	
50 PERCENT EXCEEDS	55		71		56	
90 PERCENT EXCEEDS	8.0		34		14	

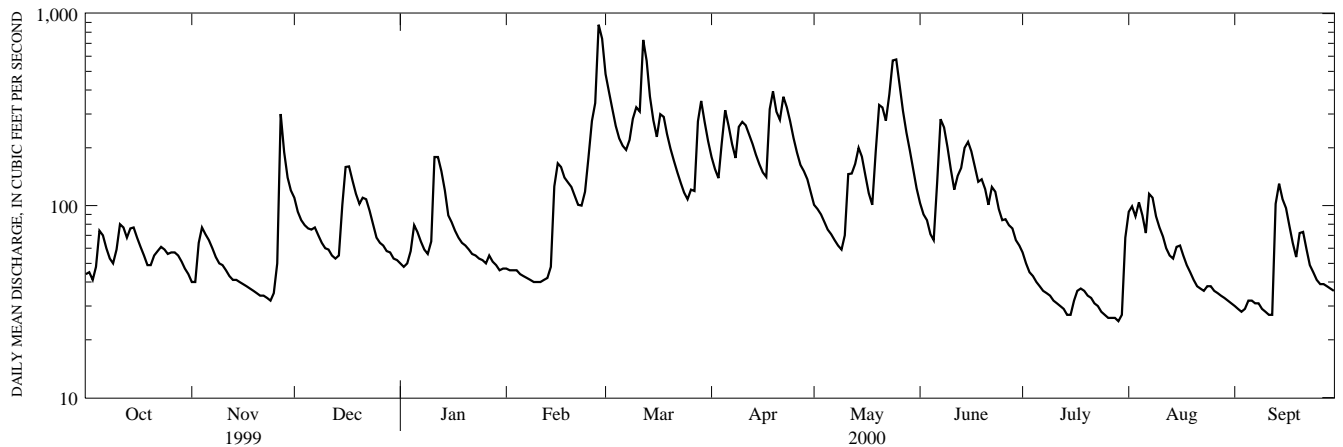
STATISTICS OF MONTHLY MEAN DATA FOR WATER YEARS 1945 - 1960, BY WATER YEAR (WY) (PRIOR TO REGULATION)

	OCT	NOV	DEC	JAN	FEB	MAR	APR	MAY	JUN	JUL	AUG	SEP
MEAN	62.2	113	136	130	125	221	264	139	63.6	54.3	45.8	47.0
MAX	376	213	243	245	230	409	539	301	155	190	304	153
(WY)	1956	1946	1951	1952	1951	1945	1958	1947	1960	1947	1955	1960
MIN	15.2	23.7	28.8	36.2	46.4	104	57.4	38.6	16.4	10.3	1.33	11.6
(WY)	1958	1958	1947	1948	1958	1960	1946	1951	1959	1955	1960	1957

SUMMARY STATISTICS WATER YEARS 1945 - 1960

ANNUAL MEAN	117	
HIGHEST ANNUAL MEAN	152	1952
LOWEST ANNUAL MEAN	78.1	1957
HIGHEST DAILY MEAN	2440	Aug 19 1955
LOWEST DAILY MEAN	.00	Jul 27 1960
ANNUAL SEVEN DAY MINIMUM	.00	Jul 27 1960
INSTANTANEOUS PEAK FLOW	^a 5860	Aug 18 1955
INSTANTANEOUS PEAK STAGE	^b 9.24	Aug 18 1955
INSTANTANEOUS LOW FLOW	^b .00	Jul 26 1960
ANNUAL RUNOFF (CFSM)	1.95	
ANNUAL RUNOFF (INCHES)	26.56	
10 PERCENT EXCEEDS	257	
50 PERCENT EXCEEDS	62	
90 PERCENT EXCEEDS	15	

- a From rating curve extended above 3,600 ft³/s.
- b No flow July 26 to Aug. 25, 1960, result of construction work upstream.



1-YEAR HYDROGRAPH
OCTOBER 1, 1999 TO SEPTEMBER 30, 2000

LACKAWAXEN RIVER BASIN

01429000 WEST BRANCH LACKAWAXEN RIVER AT PROMPTON, PA--Continued

WATER-QUALITY RECORDS

PERIOD OF RECORD.--Water years 1964 to 1987.

PERIOD OF DAILY RECORD.--

WATER TEMPERATURE: Water years 1987 to current year.

INSTRUMENTATION.--Temperature probe interfaced with a data collection platform.

REMARKS.--Interruptions in the record were due to malfunctions of the recording instrument.

EXTREMES FOR PERIOD OF DAILY RECORD.--

WATER TEMPERATURE: Maximum, 26.5°C, Sept. 10, 1989; minimum, 0.0°C, several days during March and April 1994 and January 1996.

EXTREMES FOR CURRENT YEAR.--

WATER TEMPERATURE: Maximum, 23.5°C, Aug. 4, 8, 9; minimum, 1.0°C, Feb. 17, 24-26, 28, 29, Mar. 1.

WATER TEMPERATURE, DEGREES CELSIUS, WATER YEAR OCTOBER 1999 TO SEPTEMBER 2000

DAY	MAX	MIN	MEAN	MAX	MIN	MEAN	MAX	MIN	MEAN	MAX	MIN	MEAN
1	16.0	15.5	16.0	10.0	9.0	9.5	---	---	---	3.0	2.5	2.5
2	16.0	15.5	16.0	10.0	9.0	9.5	5.0	4.5	5.0	3.0	2.5	3.0
3	16.0	15.5	16.0	10.0	9.5	9.5	5.0	4.5	4.5	3.0	3.0	3.0
4	16.0	15.5	16.0	9.5	9.5	9.5	5.0	4.5	5.0	3.0	3.0	3.0
5	15.5	15.0	15.0	9.5	9.0	9.5	5.0	5.0	5.0	3.0	2.5	3.0
6	15.0	14.5	15.0	9.5	9.0	9.5	5.0	5.0	5.0	3.0	3.0	3.0
7	14.5	14.0	14.5	9.5	8.5	9.0	5.0	4.5	5.0	3.0	3.0	3.0
8	14.0	13.0	13.5	8.5	8.5	8.5	4.5	4.0	4.5	3.5	3.0	3.5
9	13.5	12.5	13.0	8.5	8.0	8.5	4.5	4.0	4.0	3.5	3.5	3.5
10	13.0	12.5	13.0	8.5	8.0	8.5	4.5	4.0	4.0	3.5	3.5	3.5
11	14.5	13.0	14.0	9.0	8.5	8.5	4.0	3.5	4.0	3.5	3.5	3.5
12	14.0	13.0	13.5	8.5	8.0	8.0	3.5	3.0	3.5	3.5	3.5	3.5
13	13.0	12.5	13.0	8.0	8.0	8.0	3.5	3.0	3.5	3.5	3.0	3.0
14	13.0	12.5	12.5	8.0	7.5	7.5	3.5	3.0	3.0	3.0	3.0	3.0
15	12.5	12.0	12.5	7.5	6.5	7.0	3.5	3.0	3.0	3.0	3.0	3.0
16	12.5	12.0	12.0	---	---	---	3.5	3.0	3.5	3.0	2.5	3.0
17	13.0	12.0	12.5	---	---	---	3.5	3.0	3.0	2.5	2.5	2.5
18	13.5	12.5	13.0	5.0	5.0	5.0	3.0	2.5	3.0	3.0	2.5	2.5
19	12.5	12.0	12.0	5.5	5.0	5.0	2.5	2.5	2.5	3.0	2.5	3.0
20	12.0	11.5	11.5	---	---	---	3.0	2.5	3.0	3.0	2.5	3.0
21	12.0	11.5	12.0	5.5	5.0	5.5	3.0	2.5	2.5	3.0	2.5	2.5
22	11.5	11.0	11.5	---	---	---	2.5	2.0	2.5	3.0	2.5	3.0
23	11.5	11.0	11.0	5.5	5.5	5.5	2.5	2.5	2.5	3.0	3.0	3.0
24	11.0	10.5	11.0	---	---	---	2.5	2.5	2.5	3.0	3.0	3.0
25	11.0	10.5	10.5	---	---	---	2.5	2.5	2.5	3.0	2.5	3.0
26	10.5	10.0	10.5	---	---	---	2.5	2.5	2.5	3.0	2.5	3.0
27	10.0	10.0	10.0	---	---	---	2.5	2.5	2.5	3.0	3.0	3.0
28	10.0	9.5	9.5	---	---	---	2.5	2.5	2.5	3.0	3.0	3.0
29	10.0	9.0	9.5	---	---	---	2.5	2.5	2.5	3.5	3.0	3.0
30	9.5	9.0	9.5	---	---	---	2.5	2.5	2.5	3.5	3.0	3.0
31	10.5	9.0	9.5	---	---	---	2.5	2.5	2.5	3.5	3.0	3.0
MONTH	16.0	9.0	12.5	10.0	5.0	8.0	5.0	2.0	3.4	3.5	2.5	3.0

