

DELAWARE RIVER BASIN

01427510 DELAWARE RIVER AT CALLICOON, NY

LOCATION.--Lat 41°45'24", long 75°03'28", Wayne County, Pennsylvania, Hydrologic Unit 02040101, on right bank, 0.5 mi downstream from Callicoon Creek, 0.5 mi downstream from Interstate Bridge 7, and 0.8 mi southeast of Callicoon. Water-quality sampling site at discharge station.

DRAINAGE AREA.--1,820 mi².

WATER-DISCHARGE RECORDS

PERIOD OF RECORD.--June 1975 to current year.

REVISED RECORDS.--WDR NY-82-1: Drainage area. WDR NY-86-1: 1975-84 (M).

GAGE.--Water-stage recorder and crest-stage gage. Datum of gage is 734.88 ft above sea level.

REMARKS.--Records good except those for estimated daily discharges, which are poor. Subsequent to September 1954, entire flow from 371 mi² of drainage area controlled by Pepacton Reservoir, and subsequent to October 1963, entire flow from 454 mi² of drainage area controlled by Cannonsville Reservoir. Part of flow from these reservoirs diverted for New York City municipal supply. Remainder of flow (except for conservation releases and spill) impounded for release during period of low flow in the lower Delaware River basin, as directed by the Delaware River Master. Satellite and telephone gage-height and temperature telemeter at station. Information on the above reservoirs can be found in the annual Water Data Report NY-00-1.

EXTREMES FOR PERIOD OF RECORD.--Maximum discharge, 95,600 ft³/s, Jan. 19, 1996, gage-height, 16.31 ft; minimum discharge, 306 ft³/s, Sept. 24, 25, 1997; minimum gage height, 2.20 ft, Sept. 13, 1977, Aug. 23, 1985.

EXTREMES FOR CURRENT YEAR.--Maximum discharge, 23,700 ft³/s, Feb. 28, gage height, 7.99 ft; maximum gage height, 8.93 ft, Feb. 26 (ice jam); minimum discharge, 613 ft³/s, Sept. 8, 9, gage height, 2.71 ft.

DISCHARGE, CUBIC FEET PER SECOND, WATER YEAR OCTOBER 1999 TO SEPTEMBER 2000
DAILY MEAN VALUES

DAY	OCT	NOV	DEC	JAN	FEB	MAR	APR	MAY	JUN	JUL	AUG	SEP
1	2120	950	2760	1270	e1300	8390	4860	3580	3520	2090	1380	804
2	1610	964	2320	1200	e1300	7780	4230	3250	2980	1740	1180	1100
3	1330	2040	2090	1220	e1200	6950	4070	2920	2460	1520	1090	1230
4	1550	2510	1930	1370	e1100	6040	8120	2620	2040	1750	1060	972
5	2190	1920	1840	1670	e1200	5480	11600	2310	1780	1580	1090	835
6	1850	1700	1780	1490	e1100	4930	9510	2070	2830	1280	963	734
7	1570	1560	1830	1260	e1100	4550	7670	1790	6490	1100	1010	651
8	1370	1430	1630	1330	e1100	5350	6340	1550	6430	1000	1010	622
9	1370	1340	1470	1300	e1000	7040	8250	1410	5110	933	994	837
10	1720	1300	1390	1420	e1000	10100	7730	2380	4150	895	1100	1010
11	2350	1270	1400	2660	e980	9760	6880	4730	3600	877	1320	802
12	2180	1210	1330	2480	e960	17400	6160	4630	4440	826	1980	759
13	1830	1140	1250	2200	e1100	13800	5640	7650	6240	784	2020	2960
14	1980	1080	1280	1700	e1200	10200	5240	8590	6830	768	1500	3120
15	2160	1030	1910	1460	e2200	7860	4960	7530	6280	1030	1500	2110
16	1820	1000	2380	e1300	e2600	6330	4720	6340	5470	3310	1300	2110
17	1640	958	2310	e1200	e3300	8340	4630	5310	4600	3360	1140	1610
18	1540	901	2040	e1100	e2800	7660	8250	4360	4190	2280	1030	1360
19	1400	856	1850	e1200	e2600	6560	10100	6220	4750	1530	950	1260
20	1410	839	1760	e1300	e2200	5740	8360	8690	4190	1230	883	1350
21	1570	831	2220	e1300	e2100	5030	8000	8050	3350	1090	815	1180
22	1470	817	2290	e1400	e1900	4420	9890	7200	4210	1050	797	1060
23	1430	842	1940	e1300	e2000	3930	10300	9200	4070	965	893	1030
24	1660	864	1760	e1400	e2100	3460	9910	16600	3400	874	1050	966
25	1510	946	1420	e1400	e4000	3080	8430	17300	2840	845	1180	930
26	1350	1520	e1300	e1300	e6600	2940	7140	13700	3220	807	1020	905
27	1250	8810	e1300	e1300	9030	2710	6090	10800	3540	804	930	905
28	1180	6900	e1200	e1300	20100	5260	5600	8630	3190	943	778	873
29	1110	4370	e1200	e1400	12700	7560	4860	6960	2720	1230	740	813
30	1060	3370	e1200	e1300	---	6570	4140	5610	2510	1250	719	771
31	999	---	e1200	e1200	---	5680	---	4460	---	1580	713	---
TOTAL	49579	55268	53580	44730	91870	210900	211680	196440	121430	41321	34135	35669
MEAN	1599	1842	1728	1443	3168	6803	7056	6337	4048	1333	1101	1189
MAX	2350	8810	2760	2660	20100	17400	11600	17300	6830	3360	2020	3120
MIN	999	817	1200	1100	960	2710	4070	1410	1780	768	713	622

STATISTICS OF MONTHLY MEAN DATA FOR WATER YEARS 1975 - 2000, BY WATER YEAR (WY)

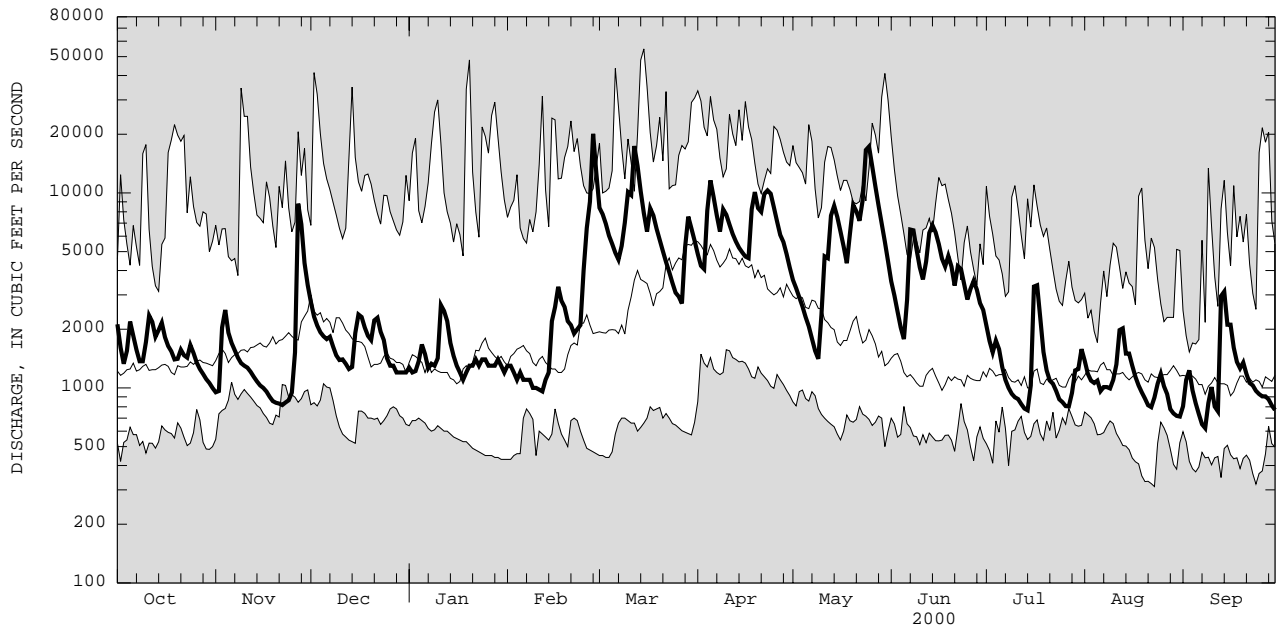
	2017	2629	2636	2530	2695	4665	5678	3591	1784	1399	1296	1409
MEAN	2017	2629	2636	2530	2695	4665	5678	3591	1784	1399	1296	1409
MAX	6545	6561	11130	7594	7993	11080	14500	7866	4048	3571	2710	3716
(WY)	1978	1997	1997	1978	1976	1977	1993	1984	2000	1996	1994	1977
MIN	701	1130	1035	587	611	1177	1496	935	734	777	560	839
(WY)	1992	1979	1999	1977	1980	1981	1985	1985	1985	1981	1985	1994

e Estimated.

DELAWARE RIVER BASIN

01427510 DELAWARE RIVER AT CALLICOON, NY--Continued

SUMMARY STATISTICS	FOR 1999 CALENDAR YEAR		FOR 2000 WATER YEAR		WATER YEARS 1975 - 2000	
ANNUAL TOTAL	691624		1146602			
ANNUAL MEAN	1895		3133		2688	
HIGHEST ANNUAL MEAN					3972	1978
LOWEST ANNUAL MEAN					1434	1985
HIGHEST DAILY MEAN	21800	Jan 24	20100	Feb 28	54800	Mar 15 1986
LOWEST DAILY MEAN	640	Jan 1	622	Sep 8	312	Aug 23 1985
ANNUAL SEVEN-DAY MINIMUM	797	Jan 1	774	Sep 6	354	Aug 17 1985
10 PERCENT EXCEEDS	3380		7660		6080	
50 PERCENT EXCEEDS	1430		1730		1400	
90 PERCENT EXCEEDS	912		905		794	



CURRENT WATER YEAR DAILY MEAN DISCHARGE (BOLD) WITH DAILY MEDIAN FOR PERIOD OF RECORD.
 SHADED AREAS SHOW HIGHEST AND LOWEST DAILY MEAN FOR PERIOD OF RECORD THROUGH PREVIOUS WATER YEAR.

DELAWARE RIVER BASIN

01427510 DELAWARE RIVER AT CALLICOON, NY--Continued

WATER-QUALITY RECORDS

PERIOD OF DAILY RECORD.--

WATER TEMPERATURES: June 1975 to current year.

INSTRUMENTATION.--Water-temperature satellite telemeter since May 1989, provides 15-minute-interval readings. Prior to May 1989, water-temperature recorder provided one-hour-interval readings.

REMARKS.--Water temperature is affected by release of water from upstream reservoir. Interruption of record was due to malfunction of recording instrument.

EXTREMES FOR PERIOD OF DAILY RECORD.--

WATER TEMPERATURES: Maximum recorded, (water years 1976-2000), 30.5°C, July 12, 1987; minimum, 0.0°C on many days during winters.

EXTREMES FOR CURRENT YEAR.--

WATER TEMPERATURES: Maximum, 27.0°C, Aug. 9; minimum, 0.0°C on many days during winter.

WATER TEMPERATURE, DEGREES CELSIUS, WATER YEAR OCTOBER 1999 TO SEPTEMBER 2000

DAY	MAX	MIN	MEAN	MAX	MIN	MEAN	MAX	MIN	MEAN	MAX	MIN	MEAN
	OCTOBER			NOVEMBER			DECEMBER			JANUARY		
1	16.5	14.5	15.5	11.0	9.0	10.0	2.5	.5	1.5	.5	.0	.0
2	16.5	13.5	15.0	12.0	9.0	10.0	1.0	.0	.5	.5	.0	.0
3	15.0	14.0	14.5	12.0	9.0	10.5	2.0	.5	1.0	1.0	.0	.5
4	14.0	12.5	13.0	9.0	6.5	8.0	3.5	2.0	2.5	3.0	1.0	2.0
5	12.5	11.0	12.0	7.5	5.5	6.5	5.5	3.5	4.5	2.5	.0	.5
6	11.5	10.0	11.0	8.0	5.5	7.0	6.5	5.0	6.0	.5	.0	.0
7	10.5	8.5	9.5	7.0	5.0	6.0	6.5	5.0	6.0	.5	.0	.0
8	10.5	7.5	9.0	5.5	4.0	5.0	5.0	4.0	4.5	.0	.0	.0
9	12.5	9.5	11.0	6.5	4.5	5.5	4.0	3.0	3.5	.5	.0	.0
10	12.0	11.0	11.5	8.0	5.5	6.5	3.0	2.5	3.0	1.0	.5	.5
11	14.0	12.0	13.0	8.0	6.5	7.5	3.0	1.5	2.0	1.5	.5	1.0
12	13.5	11.5	12.5	6.5	5.0	5.5	2.0	.5	1.5	2.5	1.5	2.0
13	13.0	10.5	11.5	6.0	5.5	5.5	2.0	.5	1.5	1.5	.0	1.0
14	12.5	10.0	11.5	5.5	4.5	5.0	2.5	1.5	2.0	.0	.0	.0
15	11.0	9.0	10.0	5.0	3.5	4.0	3.0	1.5	2.5	.0	.0	.0
16	11.5	8.5	10.0	3.5	2.0	2.5	4.0	3.0	3.5	.0	.0	.0
17	12.0	10.0	11.0	2.0	.5	1.5	3.5	2.5	3.0	.0	.0	.0
18	12.0	10.5	11.5	2.0	.0	1.5	2.5	1.5	2.0	.0	.0	.0
19	11.0	9.0	10.0	4.0	2.0	3.0	1.5	.5	1.0	.0	.0	.0
20	10.0	9.5	9.5	4.0	2.5	3.0	1.5	.5	1.0	.0	.0	.0
21	10.5	8.5	9.5	5.5	4.0	4.5	2.0	1.5	1.5	.0	.0	.0
22	9.5	8.0	9.0	7.0	5.0	6.0	2.0	1.0	1.5	.0	.0	.0
23	9.0	8.0	8.5	8.5	6.5	7.5	1.0	.0	.5	.0	.0	.0
24	9.0	7.5	8.0	10.5	8.0	9.5	.0	.0	.0	.0	.0	.0
25	9.0	7.0	8.0	10.0	9.0	9.5	.0	.0	.0	.0	.0	.0
26	9.0	6.5	8.0	11.0	8.5	9.0	.0	.0	.0	.0	.0	.0
27	8.0	6.5	7.0	10.5	9.0	9.5	.0	.0	.0	.0	.0	.0
28	8.0	5.5	7.0	9.0	6.5	8.0	.0	.0	.0	.0	.0	.0
29	8.5	5.5	7.0	6.5	4.5	5.5	.0	.0	.0	.0	.0	.0
30	9.5	6.5	8.0	4.5	2.5	4.0	.0	.0	.0	.0	.0	.0
31	11.0	8.0	9.5	---	---	---	.0	.0	.0	.0	.0	.0
MONTH	16.5	5.5	10.5	12.0	.0	6.0	6.5	.0	2.0	3.0	.0	.5

DELAWARE RIVER BASIN

01427510 DELAWARE RIVER AT CALLICOON, NY--Continued

WATER TEMPERATURE, DEGREES CELSIUS, WATER YEAR OCTOBER 1999 TO SEPTEMBER 2000

DAY	MAX	MIN	MEAN	MAX	MIN	MEAN	MAX	MIN	MEAN	MAX	MIN	MEAN
	FEBRUARY			MARCH			APRIL			MAY		
1	.0	.0	.0	3.0	2.5	2.5	7.5	5.0	6.0	12.0	10.0	10.5
2	.0	.0	.0	3.0	2.5	2.5	7.0	6.5	6.5	13.0	10.5	11.0
3	.0	.0	.0	2.5	1.5	2.0	8.0	6.5	7.0	14.0	10.0	12.0
4	.0	.0	.0	3.0	1.5	2.5	9.0	7.5	8.5	16.0	11.5	13.5
5	.0	.0	.0	3.5	2.5	3.0	8.5	5.0	7.0	17.0	13.5	15.5
6	.0	.0	.0	4.5	2.5	3.5	6.0	4.0	5.0	19.5	15.0	17.0
7	.0	.0	.0	5.0	3.0	4.0	7.0	6.0	6.5	21.5	16.5	19.0
8	.0	.0	.0	6.0	4.5	5.0	9.5	7.0	8.0	23.0	18.0	20.5
9	.0	.0	.0	6.5	5.5	6.0	9.0	4.5	6.5	24.0	18.5	21.0
10	.0	.0	.0	6.0	5.0	5.5	5.5	4.0	4.5	21.5	15.5	18.5
11	.0	.0	.0	5.0	3.5	4.0	5.0	4.5	4.5	16.5	15.0	15.5
12	.0	.0	.0	3.5	3.0	3.5	5.5	4.5	5.0	15.0	13.5	14.5
13	.0	.0	.0	3.0	2.0	2.5	6.5	4.0	5.5	15.0	13.0	14.0
14	.0	.0	.0	4.0	2.5	3.0	8.5	6.0	7.0	15.5	14.5	15.0
15	.0	.0	.0	4.5	3.5	4.0	10.0	7.5	9.0	14.5	12.5	13.5
16	.0	.0	.0	6.0	4.5	5.0	12.5	9.5	11.0	13.5	11.5	12.5
17	.0	.0	.0	6.0	3.0	5.0	11.0	8.5	10.0	15.0	13.0	14.0
18	.0	.0	.0	3.0	2.0	2.5	8.5	6.5	7.0	16.0	14.0	15.0
19	.0	.0	.0	4.0	2.5	3.0	7.5	6.0	7.0	15.0	12.5	14.0
20	.0	.0	.0	4.5	3.5	4.0	9.0	7.5	8.5	12.5	10.5	11.0
21	.0	.0	.0	5.0	4.5	5.0	9.0	8.0	8.5	11.0	10.5	10.5
22	.0	.0	.0	6.5	5.0	5.5	8.0	7.5	8.0	11.5	11.0	11.0
23	.0	.0	.0	8.5	5.5	7.0	8.0	7.0	7.5	12.0	11.0	11.5
24	.0	.0	.0	9.0	6.5	7.5	9.0	6.5	8.0	13.5	12.0	13.0
25	.0	.0	.0	9.0	7.0	8.0	10.0	8.5	9.5	13.5	12.5	13.0
26	.0	.0	.0	10.0	7.5	8.5	10.0	9.0	9.0	13.0	12.5	12.5
27	1.0	.0	.5	9.0	6.5	8.0	9.0	8.0	8.5	13.5	12.0	12.5
28	1.5	.0	1.0	8.0	6.5	7.5	9.5	8.0	9.0	14.5	13.0	13.5
29	3.0	1.5	2.5	6.5	5.0	6.0	11.0	8.5	10.0	14.5	13.5	14.0
30	---	---	---	5.5	5.0	5.0	12.5	10.0	11.0	16.0	13.5	15.0
31	---	---	---	6.0	4.5	5.5	---	---	---	17.5	15.0	16.0
MONTH	3.0	.0	.0	10.0	1.5	4.5	12.5	4.0	7.5	24.0	10.0	14.0
DAY	MAX	MIN	MEAN	MAX	MIN	MEAN	MAX	MIN	MEAN	MAX	MIN	MEAN
	JUNE			JULY			AUGUST			SEPTEMBER		
1	20.0	16.0	17.5	23.0	18.5	20.5	21.5	20.0	21.0	24.5	23.0	24.0
2	20.5	17.0	18.5	24.0	19.0	21.5	25.0	20.5	22.5	25.0	22.5	24.0
3	21.0	17.0	19.0	22.0	20.0	21.0	24.5	22.0	23.5	24.0	21.5	23.0
4	20.5	16.5	18.5	23.5	20.0	21.5	25.5	21.5	23.5	24.0	21.0	22.5
5	18.0	15.5	16.5	24.0	19.5	22.0	25.0	20.5	23.0	21.5	18.0	20.0
6	15.5	12.5	14.0	23.5	19.0	21.5	23.5	20.5	21.0	21.0	16.5	19.0
7	14.0	12.0	13.0	22.5	18.5	20.5	24.0	20.0	22.0	21.5	17.0	19.0
8	16.0	13.0	14.5	22.5	17.5	20.0	25.5	21.0	23.5	21.5	18.0	19.5
9	18.0	15.0	16.5	22.0	18.0	20.5	27.0	22.5	24.5	21.5	19.5	20.5
10	20.5	16.5	18.5	24.0	20.0	22.0	26.5	22.5	24.5	21.0	19.5	20.5
11	22.0	18.5	20.0	24.0	19.5	22.0	25.0	22.0	23.5	20.0	18.5	19.0
12	20.5	19.0	20.0	25.0	19.5	22.5	23.0	18.0	20.0	19.5	18.5	19.0
13	19.0	15.5	17.0	25.0	20.5	23.0	19.5	17.0	18.0	21.0	18.0	19.5
14	15.5	14.5	15.0	24.0	21.5	23.0	19.0	18.0	18.5	19.5	17.0	18.5
15	16.5	14.5	15.5	23.0	20.5	21.5	22.5	17.5	20.0	19.0	17.5	18.5
16	19.5	16.5	18.0	20.5	18.5	20.0	23.0	19.5	21.5	17.5	15.0	16.5
17	20.5	19.0	19.5	20.5	18.0	19.0	22.5	19.0	21.0	17.0	14.0	15.5
18	19.0	16.5	17.5	22.5	18.5	20.0	21.0	18.5	19.5	18.5	14.0	16.0
19	17.5	15.5	16.5	20.5	18.5	19.5	21.5	17.5	19.5	18.5	16.0	17.0
20	20.5	16.5	18.5	23.5	18.0	20.5	21.5	17.5	19.5	20.5	17.0	18.5
21	20.0	18.5	19.0	21.5	18.5	20.0	22.0	16.5	19.5	---	---	---
22	20.0	18.5	19.0	22.5	19.0	20.5	22.5	17.5	20.0	19.0	---	---
23	20.5	18.0	19.0	24.0	18.5	21.0	21.5	19.0	19.5	17.5	15.5	16.0
24	20.5	18.0	19.0	22.5	19.5	21.0	23.0	18.5	20.5	16.5	15.0	16.0
25	23.0	19.0	20.5	23.0	19.5	21.5	23.5	18.5	21.0	15.5	13.0	14.5
26	23.5	20.5	21.5	22.0	20.0	20.5	23.5	19.0	21.5	15.0	13.0	13.5
27	21.5	19.5	20.5	23.0	20.0	21.0	23.0	20.0	21.5	16.0	12.0	14.0
28	21.0	18.0	19.5	25.5	21.0	23.0	23.0	20.0	21.5	15.0	13.0	14.0
29	22.0	19.0	20.5	24.0	21.5	22.5	23.0	21.0	22.0	14.5	11.0	13.0
30	22.0	18.5	20.0	22.5	21.0	22.0	24.0	20.5	22.0	15.0	11.5	13.5
31	---	---	---	22.5	20.5	21.5	25.0	22.0	23.5	---	---	---
MONTH	23.5	12.0	18.0	25.5	17.5	21.0	27.0	16.5	21.5	---	---	---