



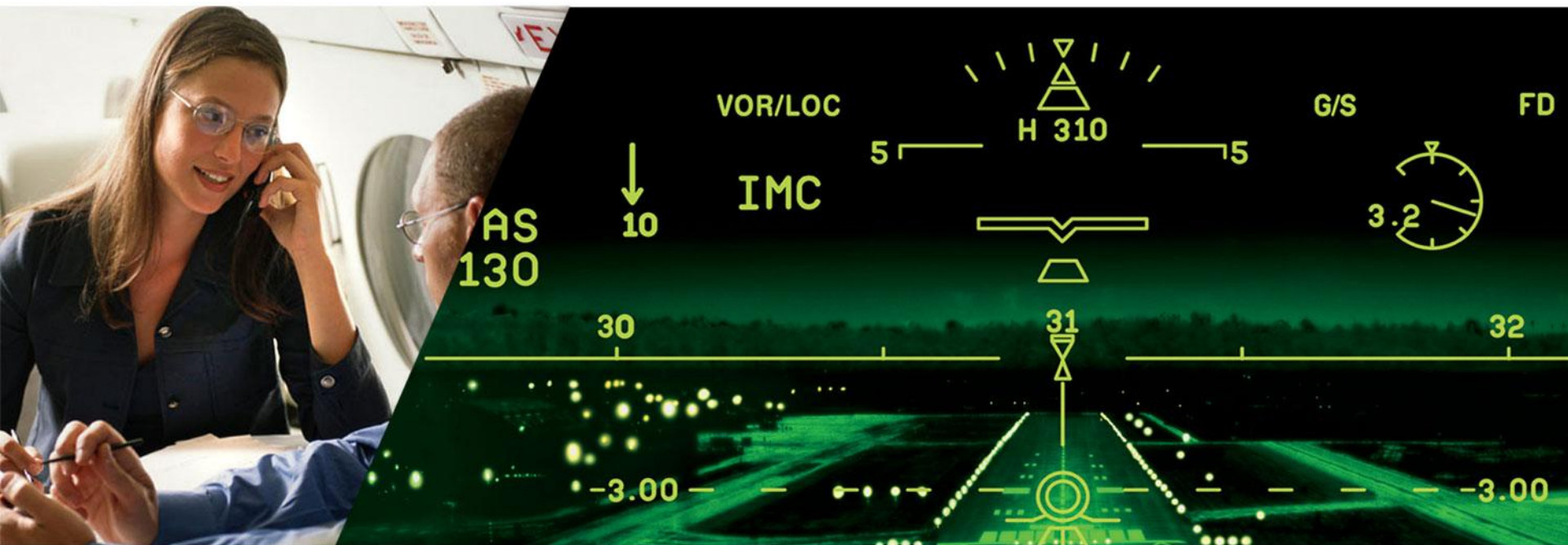
## Rockwell Collins – Melbourne

The contents of this document are proprietary to Rockwell Collins, Inc.

© Copyright 2012 Rockwell Collins, Inc.  
All rights reserved.

**Rockwell  
Collins**

## Our vision



Building upon our vision – *Working together to be the most trusted source of communication and aviation electronics solutions –*

we apply both insight and foresight to help our customers succeed today and anticipate needs for tomorrow.

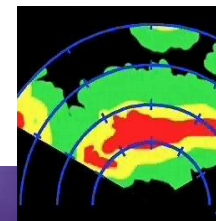
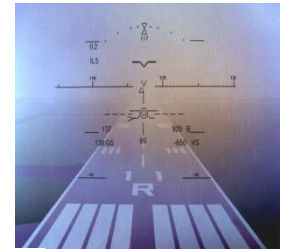
## Every day

- Pilots safely arrive and land at their destinations using our advanced avionics and head-up guidance systems.
- Airline passengers follow their flight's path on our moving map displays.
- Soldiers pinpoint their location and see their way using our navigation and display systems.



## Rockwell Collins - Melbourne Capabilities

- | Engineering Design and Development
- | Regional Human Resources and Security
- | Service Parts (Rockwell Collins Services)
- | Metrology
- | Procurement
- | Support Services
- | Finance
- | Business & Regional Systems Customer Support
- | Quality
- | Operations
  - | Assembly
  - | Environmental Stress Screening
  - | Testing



## Business and Regional Systems & Air Transport Systems



### Key Markets

Regional airlines and OEM  
Business aviation and OEM  
Air Transport OEM

### Core Product Capabilities

- Situational awareness systems
- Integrated avionics systems
- Flight management systems
- Flight display systems
- Flight control systems
- Communication systems
- Navigation systems

## Melbourne Manufacturing

- Turn key Operations supporting our customers for over 30 years
- Our 200,000 sq. ft.
  - warehousing & distribution
  - printed circuit board assembly
  - final unit assembly and product testing
- Supports Business and Regional Systems (BRS) & Air Transport Systems (ATS)
- Manufactures over 1600 different products



# Melbourne Design Center Core Capabilities

## Communication

- Leadership in communications products supporting voice and data needs
  - HF, VHF, Inmarsat Aero, Ku band
  - High bandwidth connectivity through partnerships



## Navigation Sensors

- Broad line of accurate, high quality and high integrity navigation sensors utilizing latest MEMS technology
- Radio and terrestrial sensors



## Safety/Surveillance

- Broad line of leading edge safety system products including the new Multiscan™ weather radar
- Collision avoidance products meeting today's needs and preparing for future airspace requirements



## Process Center

- Approximately 22,000 Sq Ft of production space
- High Mix / Low Volume Printed Circuit Board (PCB) assembly: Surface Mount and Leaded Technologies
- Electrical & mechanical automated and manual processes
- Lean Supermarket to improve flow and on-time responsiveness to our customers
- Current workmanship Quality levels in the 10 Defects Per Million Opportunity (DPMO) range





## Cellular Manufacturing

- Thirty Five (35) Product Cells
- Over 800 active top level 10 digit part numbers
- Eight (8) product lines executing to pull strategy
- Perform postwave through top level test and ship table



## Material & Supply

On site Material & Supply Support consisting of:

- Procurement & Subcontracts
  - Supply Chain Management of Raw Material Needs across all commodities
  - Subcontracts/3<sup>rd</sup> Party Equipment Supply Chain Management
- Logistics
  - Full Warehouse Operations including Receiving, Receiving Inspection, Stock Induction and Issue, Shipping and Import/Export Compliance
- Application Engineering
  - Design Engineering support on Supplier Selection
  - Factory Support on existing design/production issues

## Small Business & Supplier Diversity Office

*Innovation, quality and customer responsiveness make Rockwell Collins a leader in the aerospace and defense industry. Diverse suppliers contribute to our company's success in promoting this innovative spirit. Working together with a diverse supply chain that delivers superior products and services, Rockwell Collins builds trust every day with our customers.*

-Rockwell Collins Small Business Executive Steering Team

### **Contact**

Amber Janey

[abjaney@rockwellcollins.com](mailto:abjaney@rockwellcollins.com)

319-263-9506

Kris Gralund

[klgralun@rockwellcollins.com](mailto:klgralun@rockwellcollins.com)

319-263-3344

## Small Business Outreach Activities

### Dept of Defense Mentor-Protégé Program

Supports development of small businesses through

- Quality management system development/certification
- LEAN implementation
- Business development
- Engineering & technical development

### Small Business Innovative Research

Program to support the research & development of new technologies by small businesses.

### Seaport-e

The government's electronic contracting vehicle, Rockwell Collins is looking to expand small business team members to support Seaport-e as prime and subcontractors.

### Small Business set asides

Rockwell Collins supports small businesses as prime contractors for small business set asides.