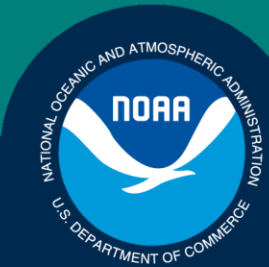


Science, Service, Stewardship

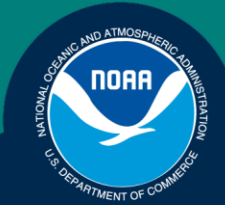


2011 Fleet Behavior to SSL Interim Final Rule

SSL Mitigation Committee Meeting
July 16-17, 2012

**NOAA
FISHERIES
SERVICE**

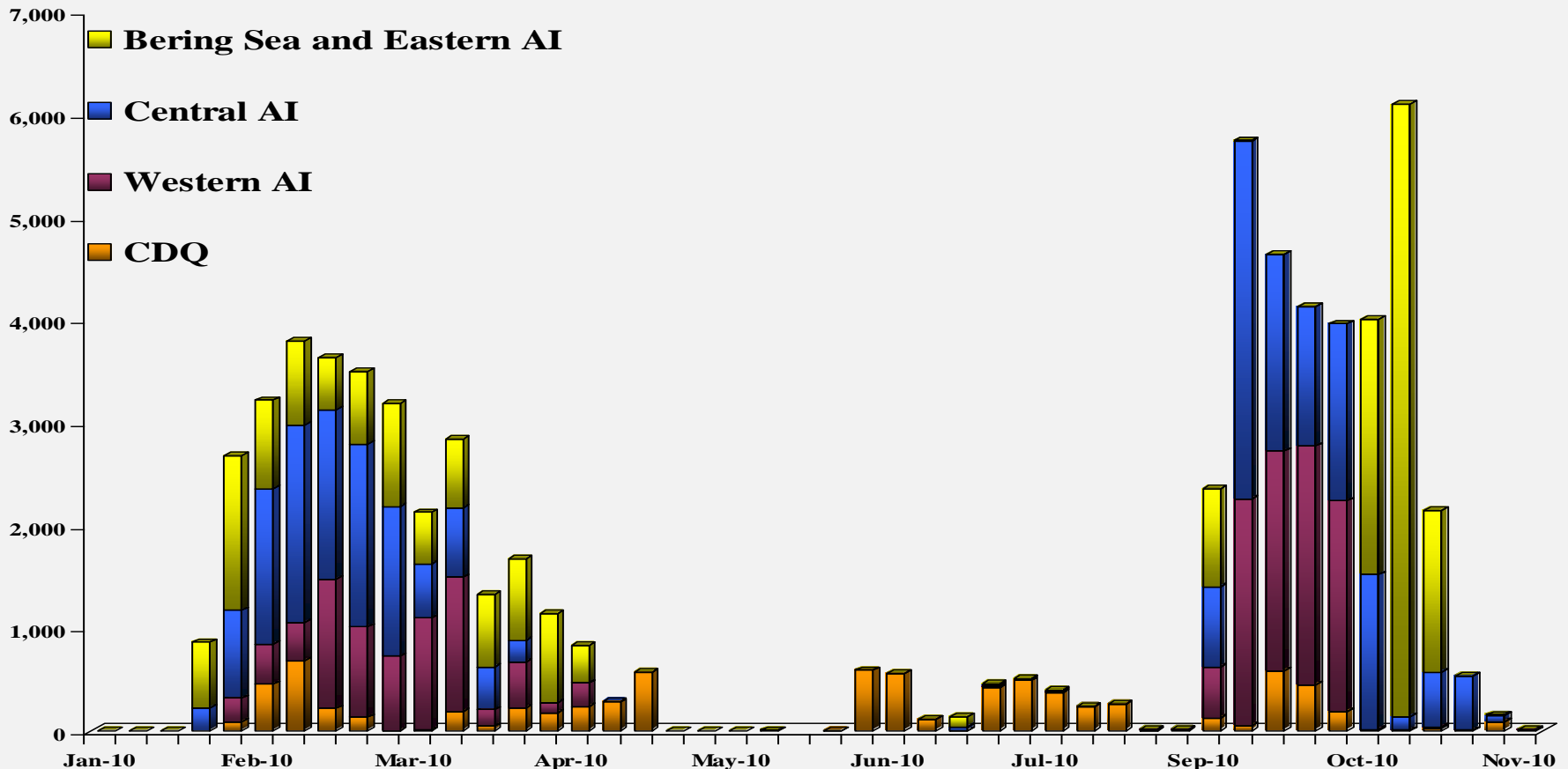
NOAA



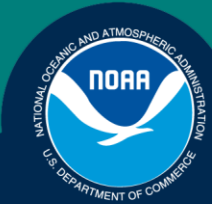
Primary Topics

- Atka Mackerel Fishery
- Trawl Pacific cod
 - Trawl CP
 - Trawl CV
- Non-Trawl Pacific cod
- Re-initiation Triggers
- Non RPA effects

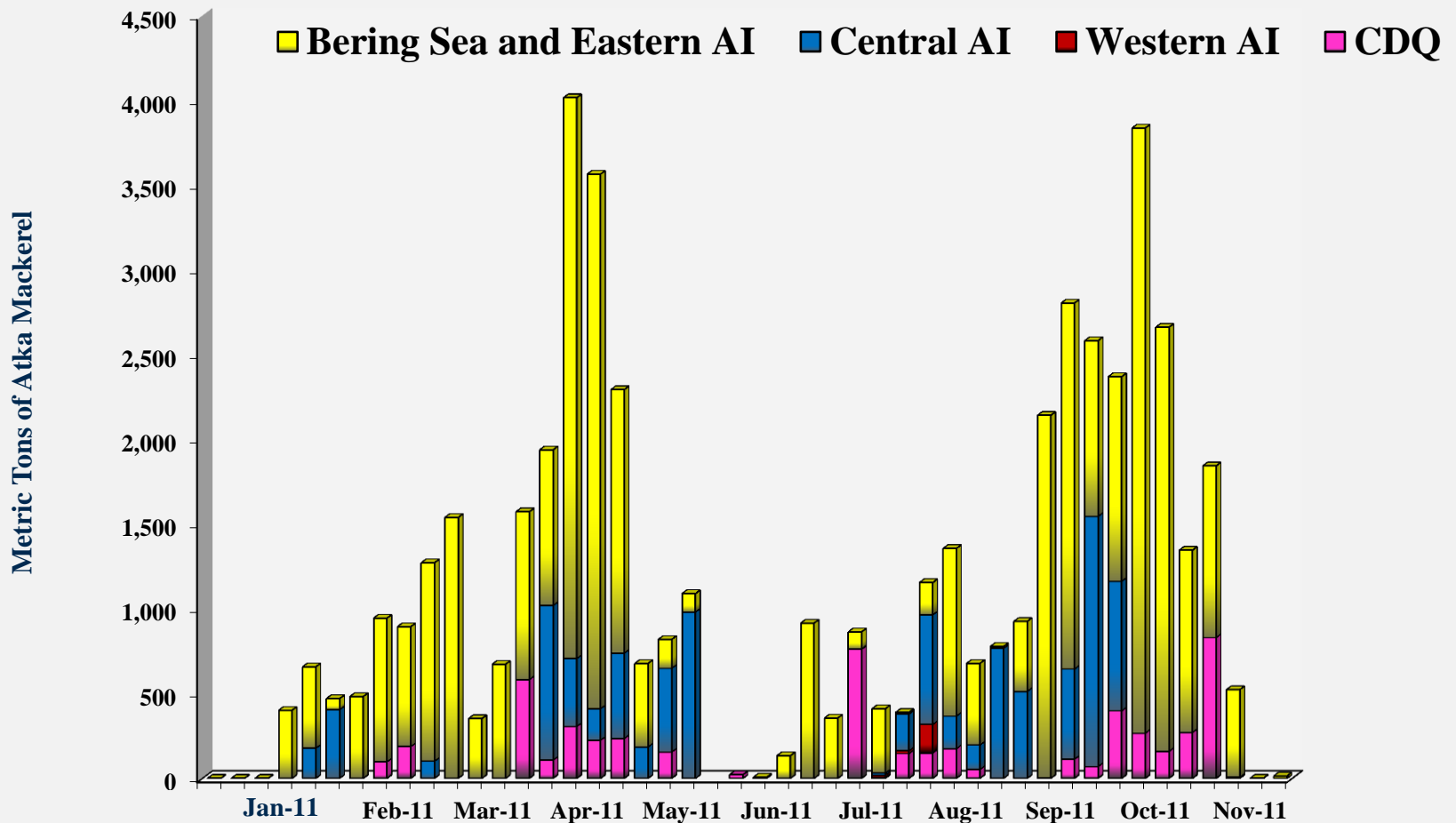
2010 Atka Mackerel Catch by Week and Area



2011 Atka Mackerel Catch by Week and Area



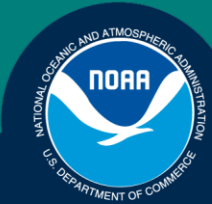
- Season dates for Atka Mackerel relaxed and HLA eliminated



2004-2011 Atka Mackerel Weekly Catch rate

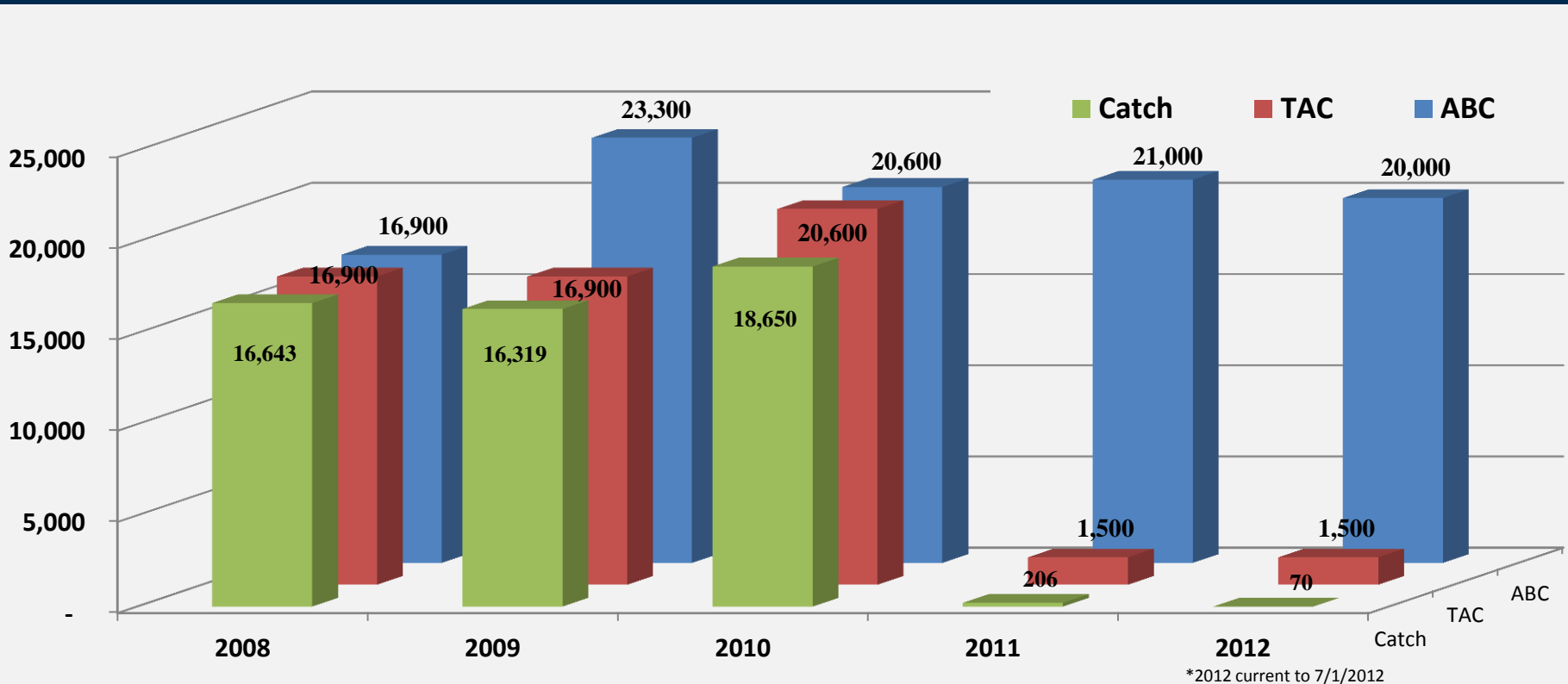


Average Weekly Amck Rate		Max Weekly AMCK Rate	
2004	2,832	6,558	
2005	3,573	7,134	
2006	4,137	7,411	
2007	2,670	6,664	
2008	2,793	5,209	
2009	2,872	5,361	Pre-RPA Average
2010	2,617	6,083	2,991
2011	1,247	3,692	Post-RPA Average
2012	1,197	3,092	1,229



Western AI (543) Atka Mackerel Total Catch

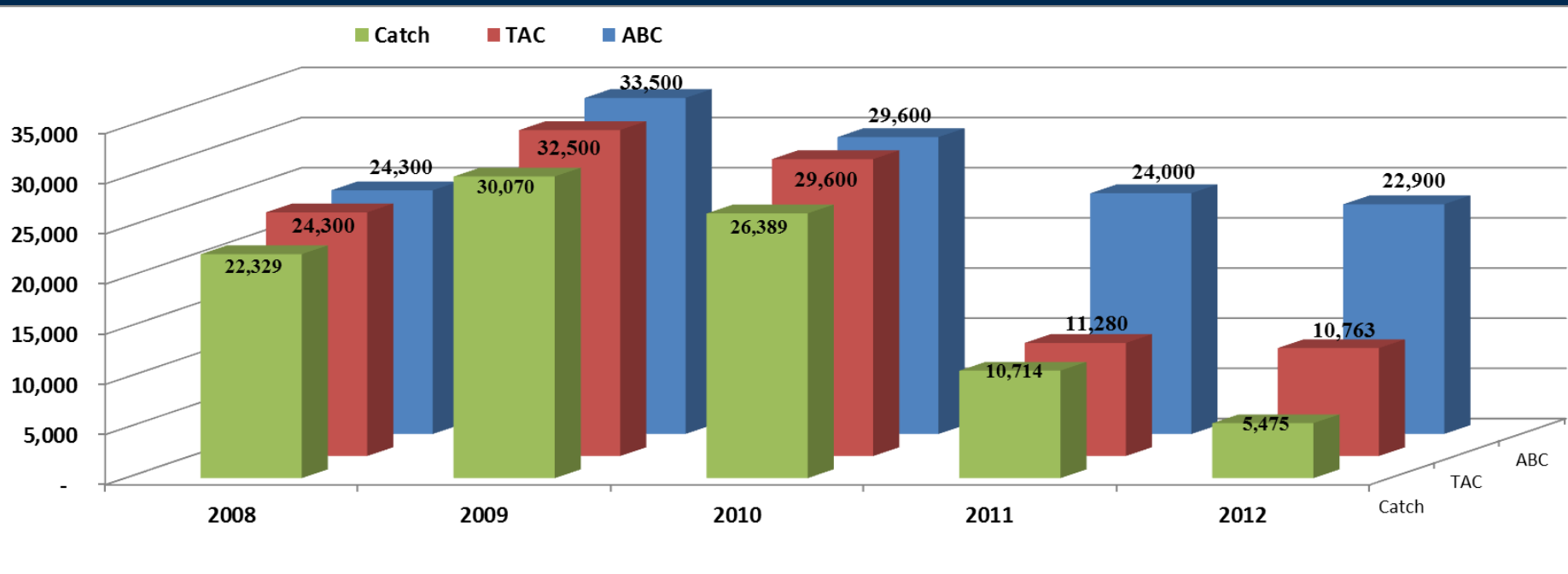
- No retention of Atka Mackerel
- Establish a TAC sufficient to support the incidental catch
 - Total incidental catch was 206 mt, 11 mt was inside Critical habitat. All incidental catch was in the Rockfish target or POP .



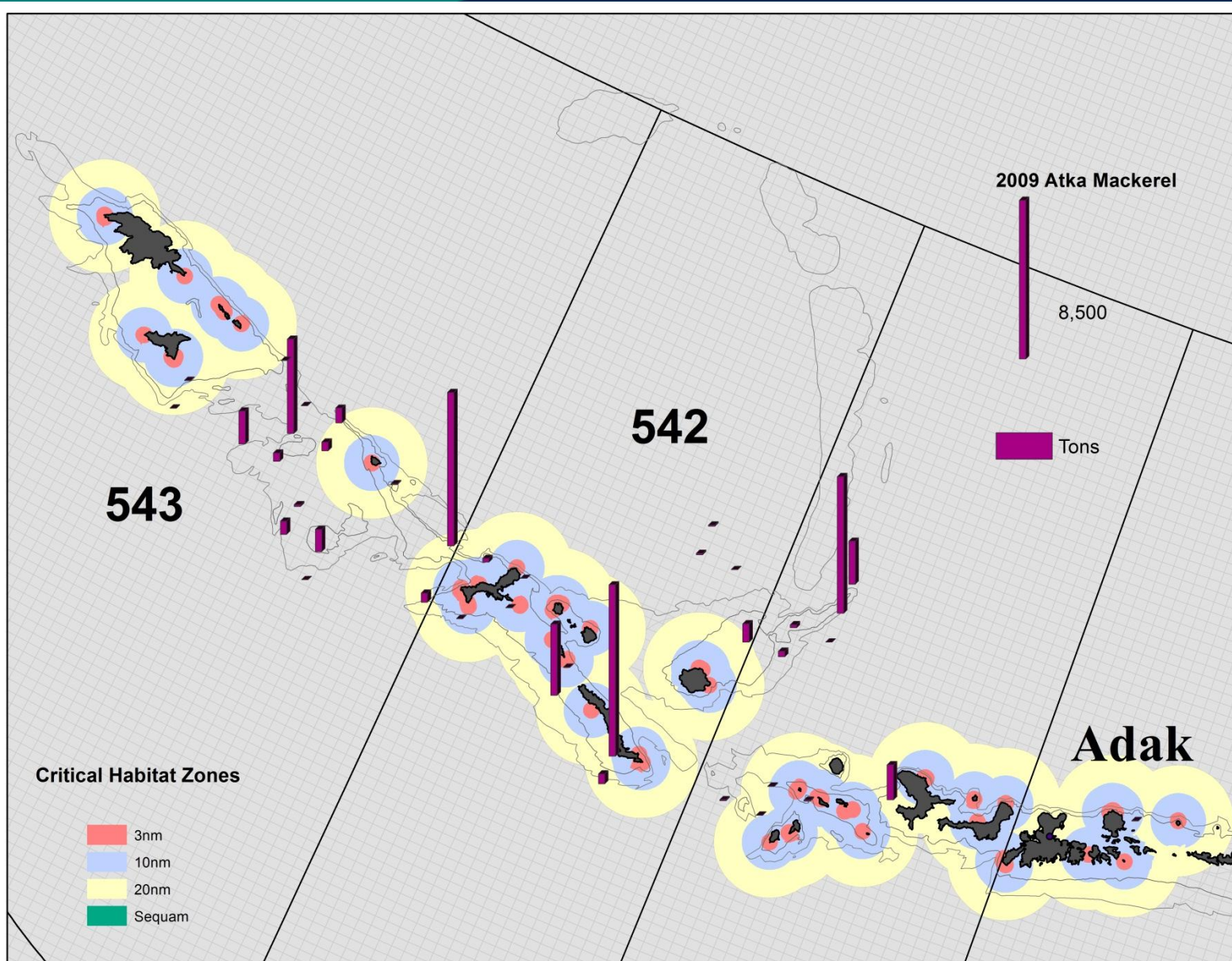
Central AI (542) Atka Mackerel Total Catch



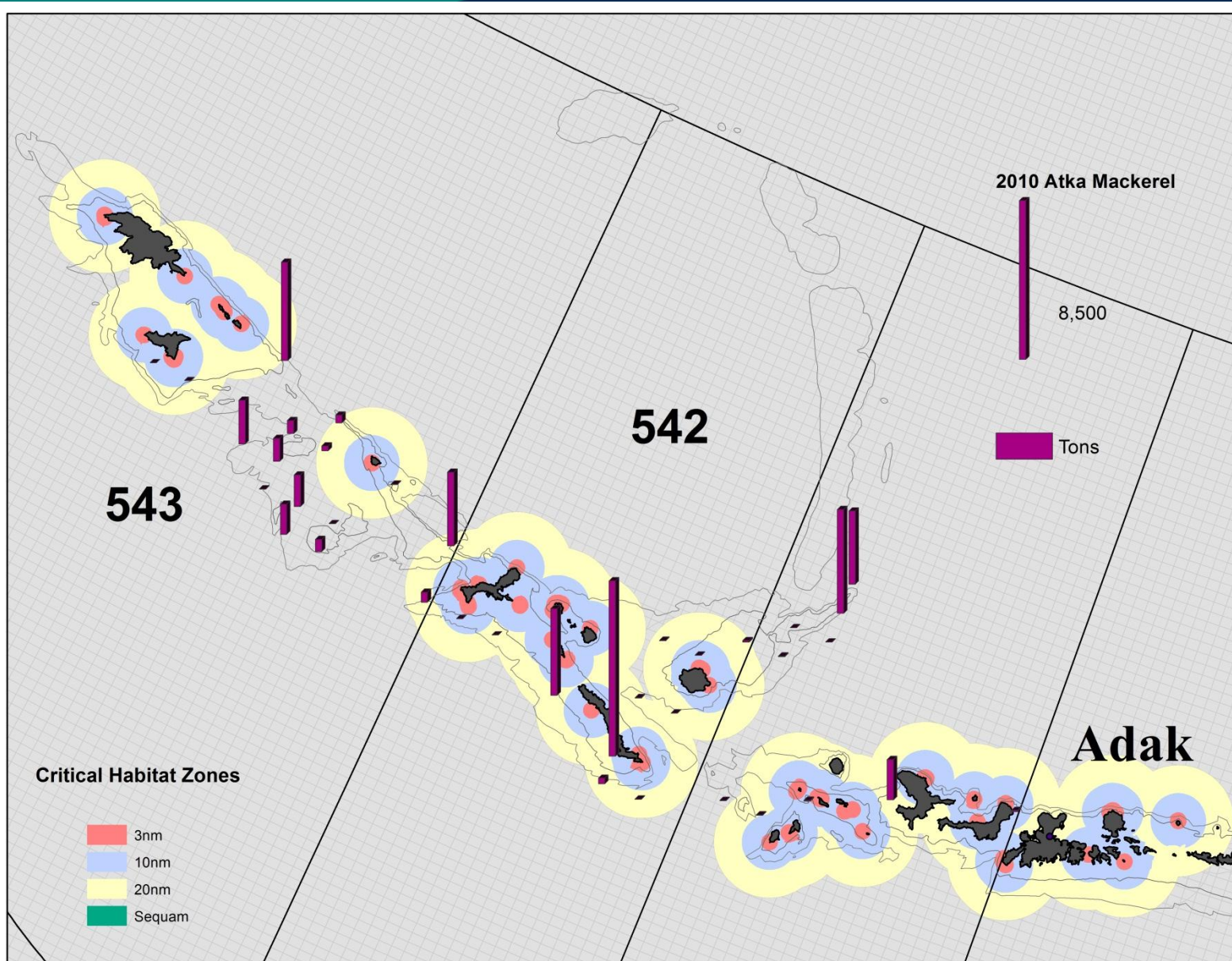
- Set TAC for Area 542 to no more than 47 percent of the acceptable biological catch (ABC).
- Catch Concentrated on the Petrel Banks



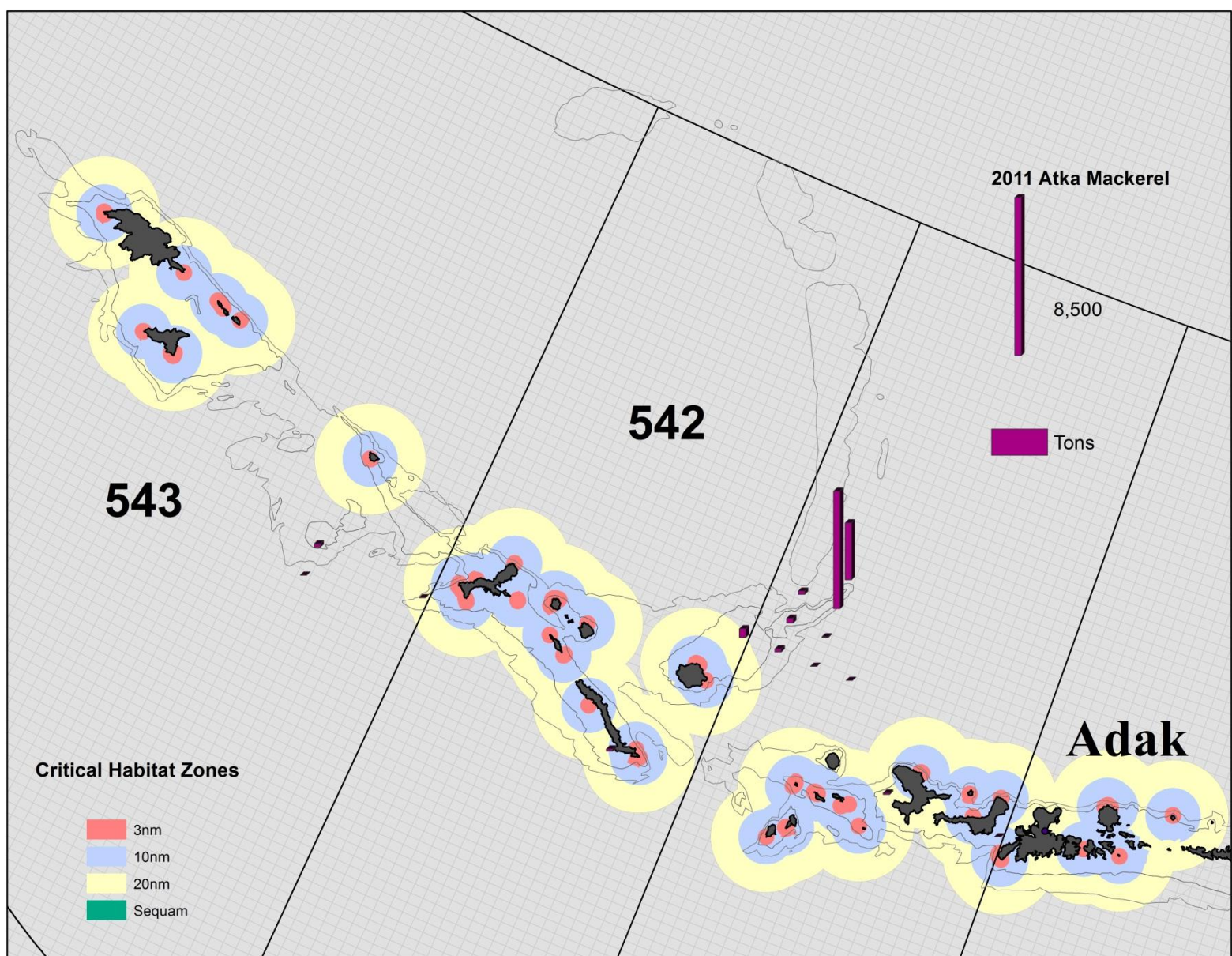
2009 Atka Mackerel Catch in 542/543



2010 Atka Mackerel Catch in 542/543



2011 Atka Mackerel Catch in 542/543





Central AI (542) Atka Mackerel Critical Habitat

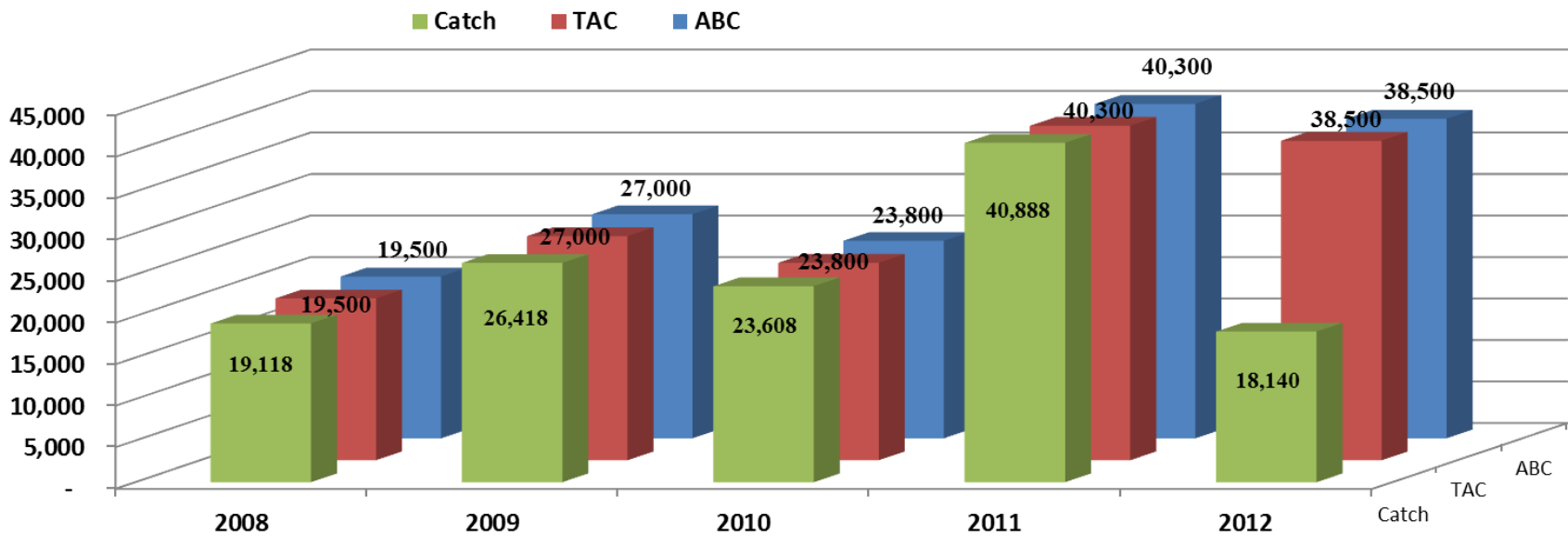
- Critical habitat from 0–20 nm closed to directed fishing for Atka mackerel, except between 179 W to 178 W longitude where only 10-20 nm is open to CDQ and Amendment 80 coop vessels.
- Limit the amount of Atka mackerel harvest allowed inside critical habitat to no more than 10 percent of the annual allocation.

2011 Atka Mackerel Tac, Critical Habitat Limit and Total Catch in Area 542	
Total Allowable Catch	11,280
Critical Habitat Limit	1,038
Total Atka Mackerel Catch in 542	10,714
Catch inside 542 Critical Habitat	88

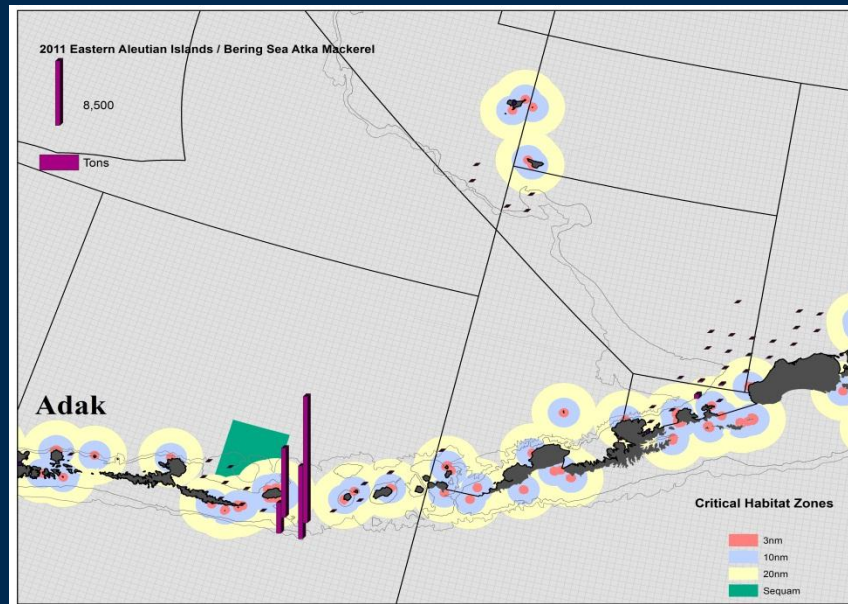
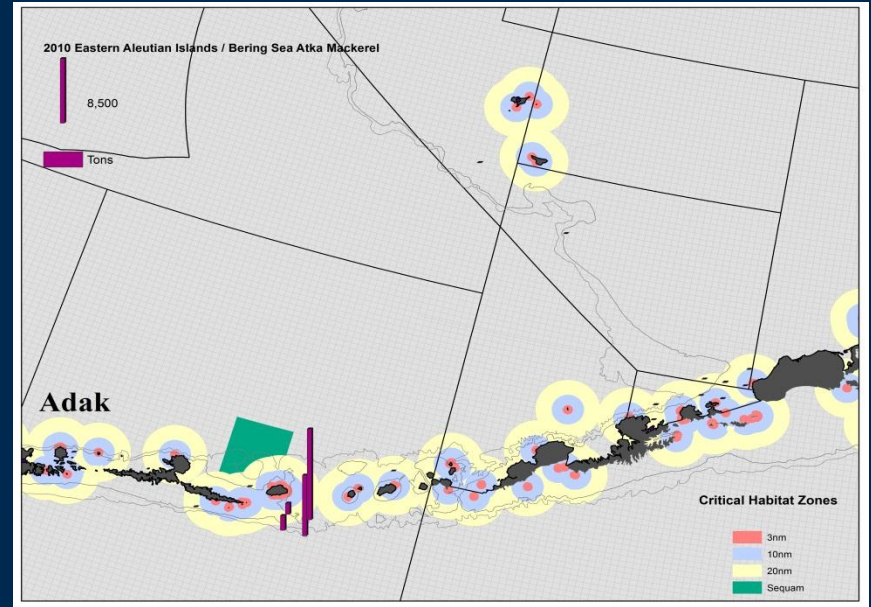
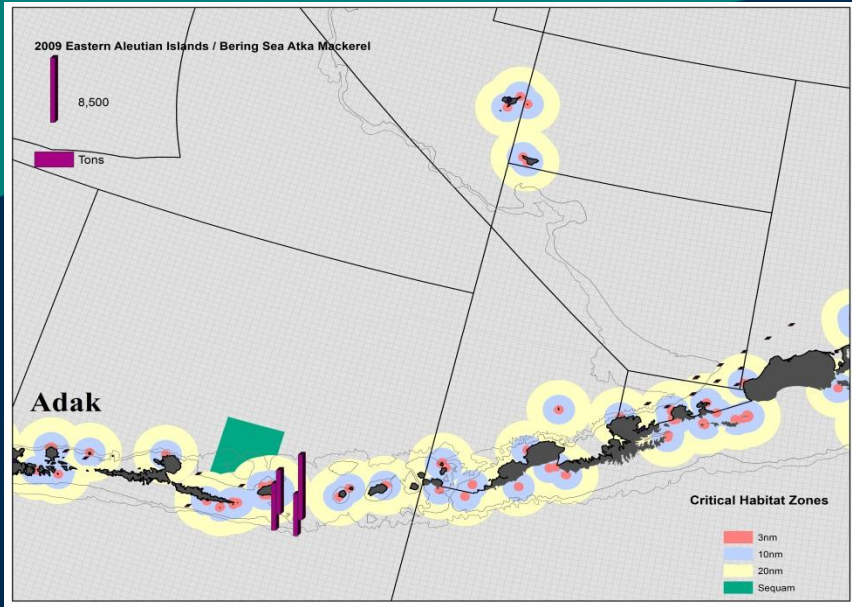
Eastern AI / Bering Sea Atka Mackerel Total Catch



- Eastern Shift of Atka Mackerel TAC
- Higher incidental catch of Atka Mackerel in the Bering Sea by pollock fleet



2009 - 2011 Atka Mackerel Catch in 541 / EBS





Pacific cod

	BSAI TAC	Total Catch*	Total AI Catch	% of BSAI Catch
2004	215,400	212,161	28,873	14%
2005	206,000	205,632	22,699	11%
2006	189,768	189,300	20,493	11%
2007	170,720	170,300	30,221	18%
2008	170,720	166,391	26,597	16%
2009	176,540	173,659	26,507	15%
2010	168,780	167,930	25,122	15%
2011	227,950	219,914	10,620	5%
2012	261,000	166,547	11,258	7%

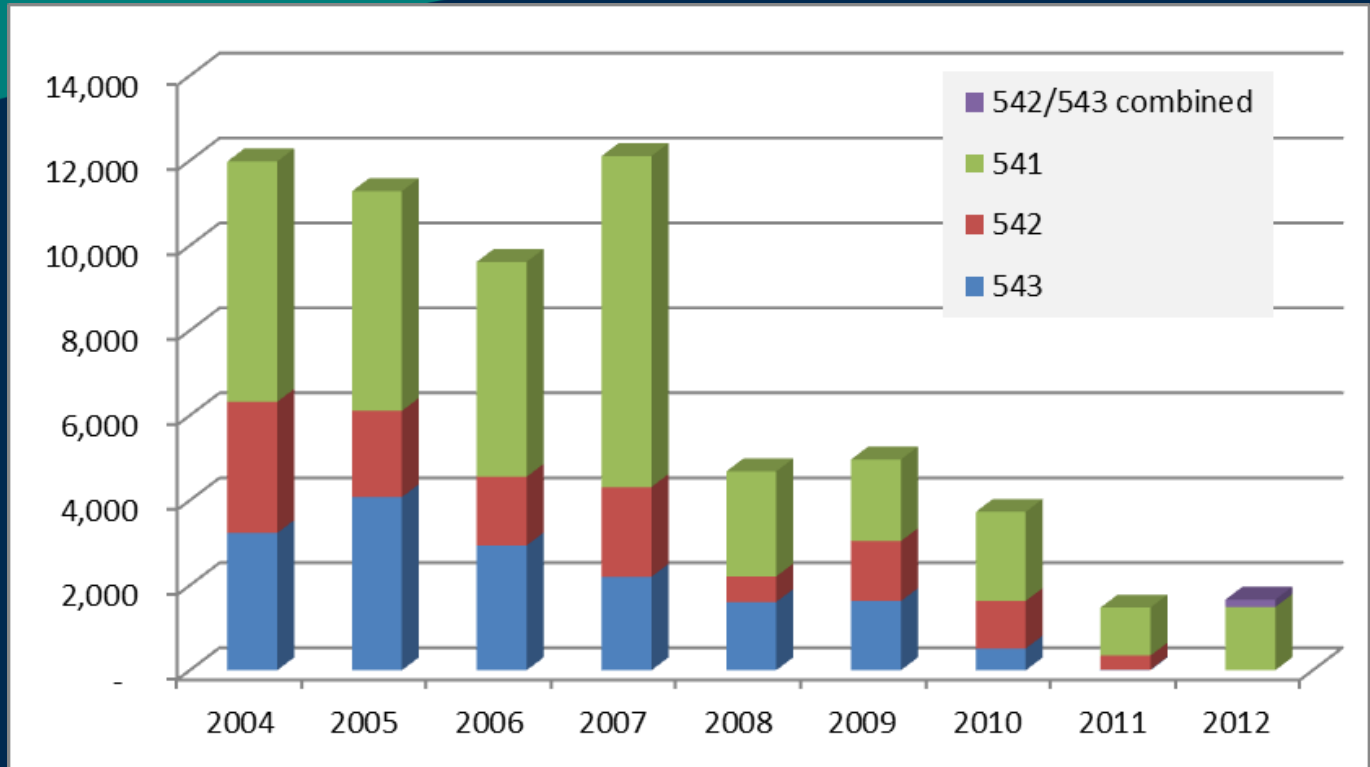
* Total catch does not include ICA catch (up to 500 tons)



Trawl Gear Pacific cod Restrictions

- 543 closed to Pacific cod (PSC)
- 0-20 nm Critical habitat (CH) in 542 closed year round west of 178 W longitude
- 0-10 nm CH in 542 closed year round east of 178 W longitude
- 0-10 nm CH in 541 closed year round
- Seasonal closures
 - Jan 1 – Jan 20; Trawl gear closed in BSAI
 - Jan 20 – Jun 10; 10-20 nm CH open in 542 East of 178 W longitude, 10-20 nm CH open in 541, Outside CH open
 - Jun 10 – Nov 1; 0-20 nm CH closed in both 541 and 542
 - Nov 1- Dec 31; Trawl gear for Pacific cod closed in BSAI

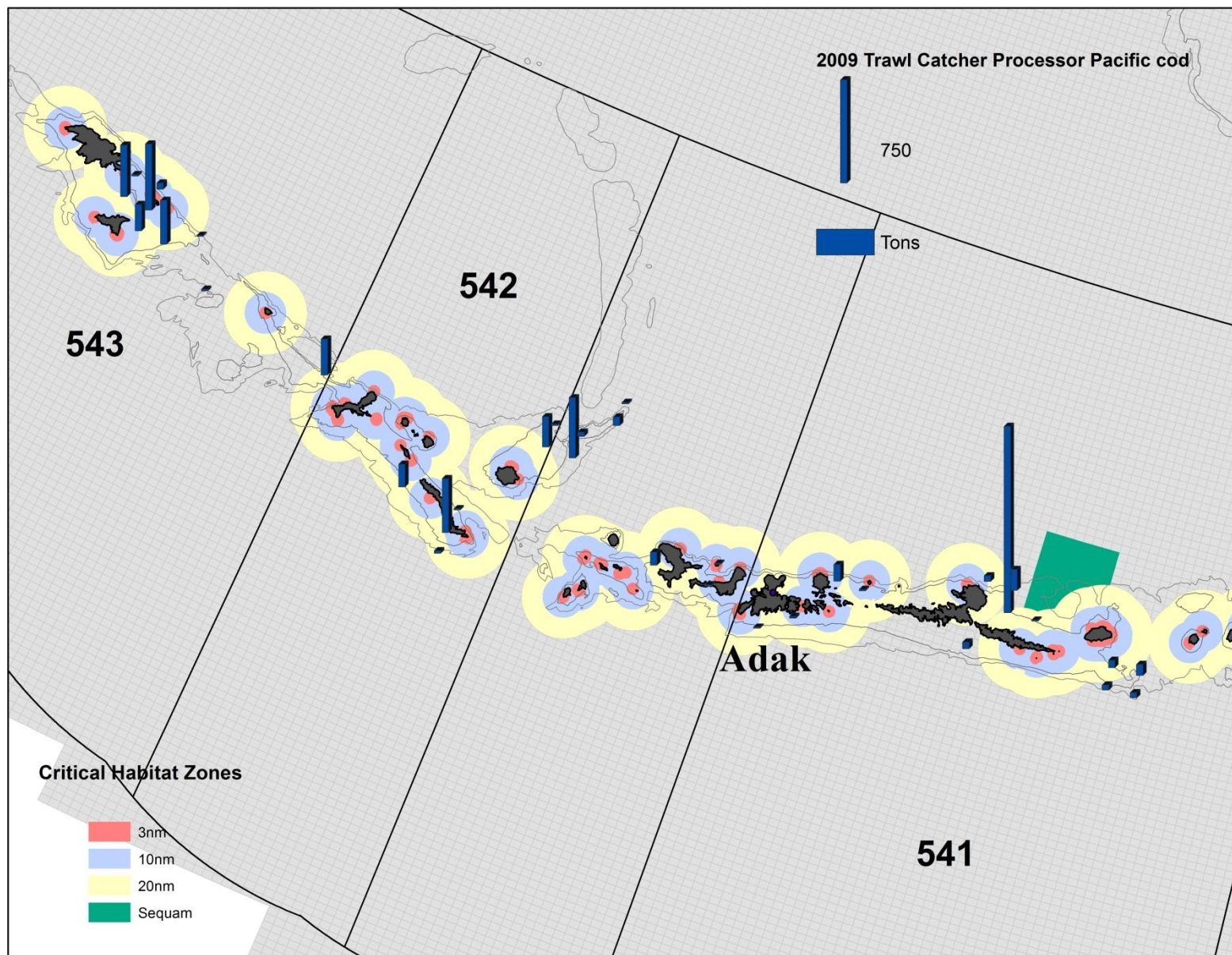
Trawl Catcher Processor Pacific Cod



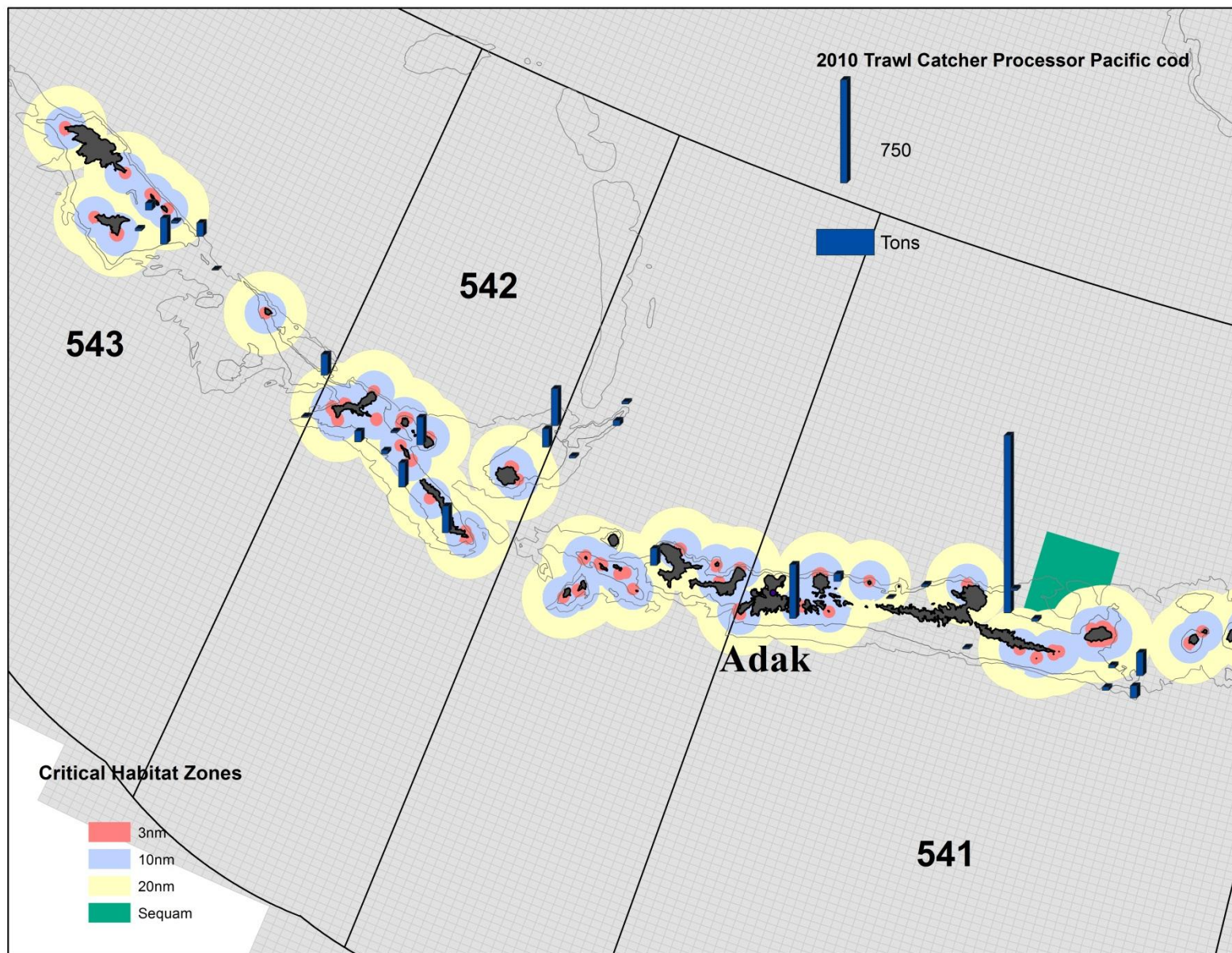
	BSAI TAC*	Total Catch	541	542	543	Total AI Catch	% of BSAI
2004	41,431	41,335	5,660	3,089	3,231	11,980	29%
2005	35,506	35,448	5,173	2,030	4,078	11,281	32%
2006	35,845	35,327	5,061	1,617	2,940	9,618	27%
2007	37,110	38,280	7,793	2,113	2,201	12,107	32%
2008	25,135	20,513	2,474	600	1,608	4,682	23%
2009	28,951	26,479	1,922	1,412	1,629	4,963	19%
2010	28,069	28,026	2,097	1,120	513	3,730	13%
2011	33,709	31,165	1,131	330	15	1,476	5%
2012	36,593	22,768	1,488	c	c	1,663	7%

*Amendment 80 and AFA Trawl CP combined; adjusted for reallocations

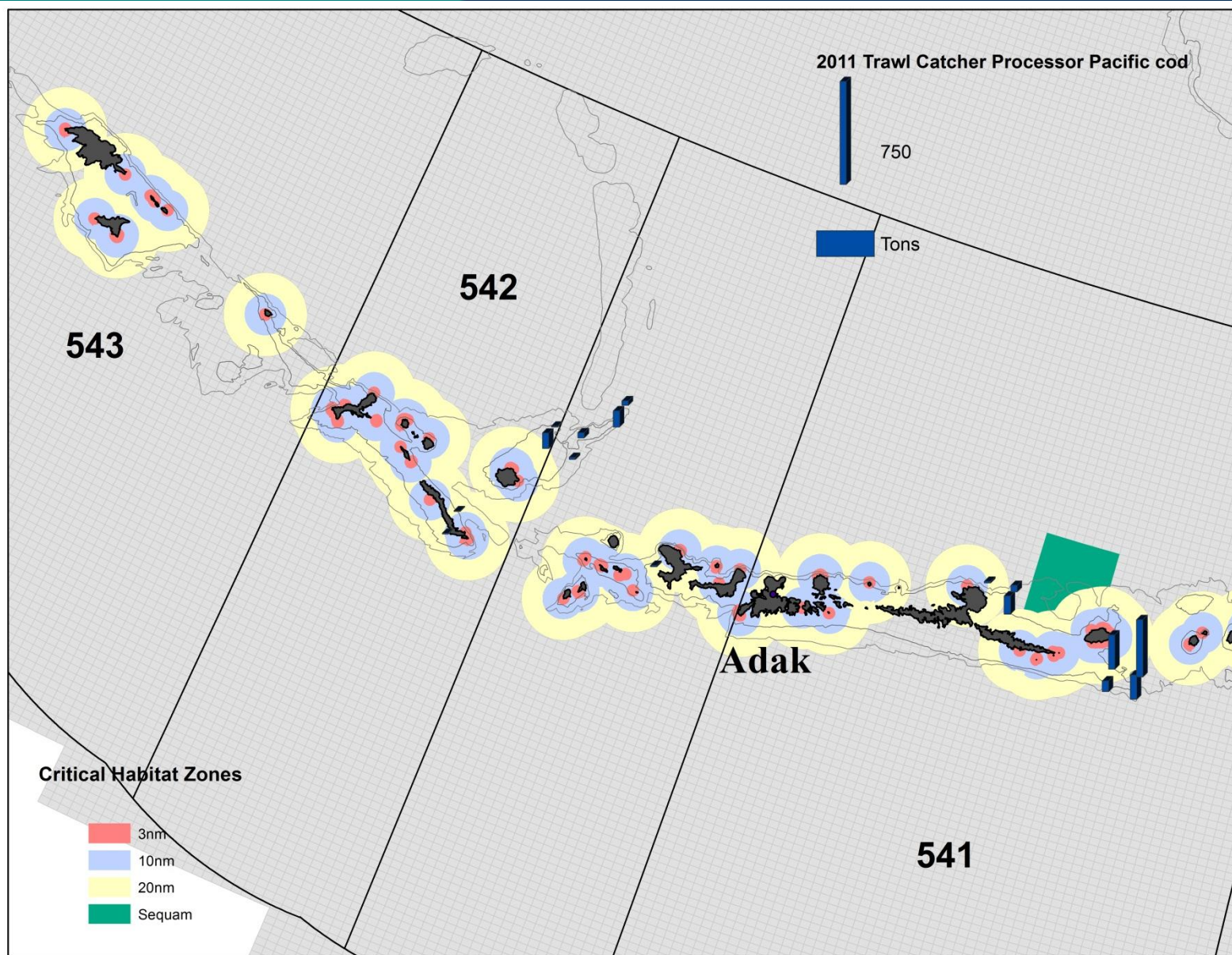
2009 Trawl Catcher Processor Pacific cod Catch in The Aleutian Islands



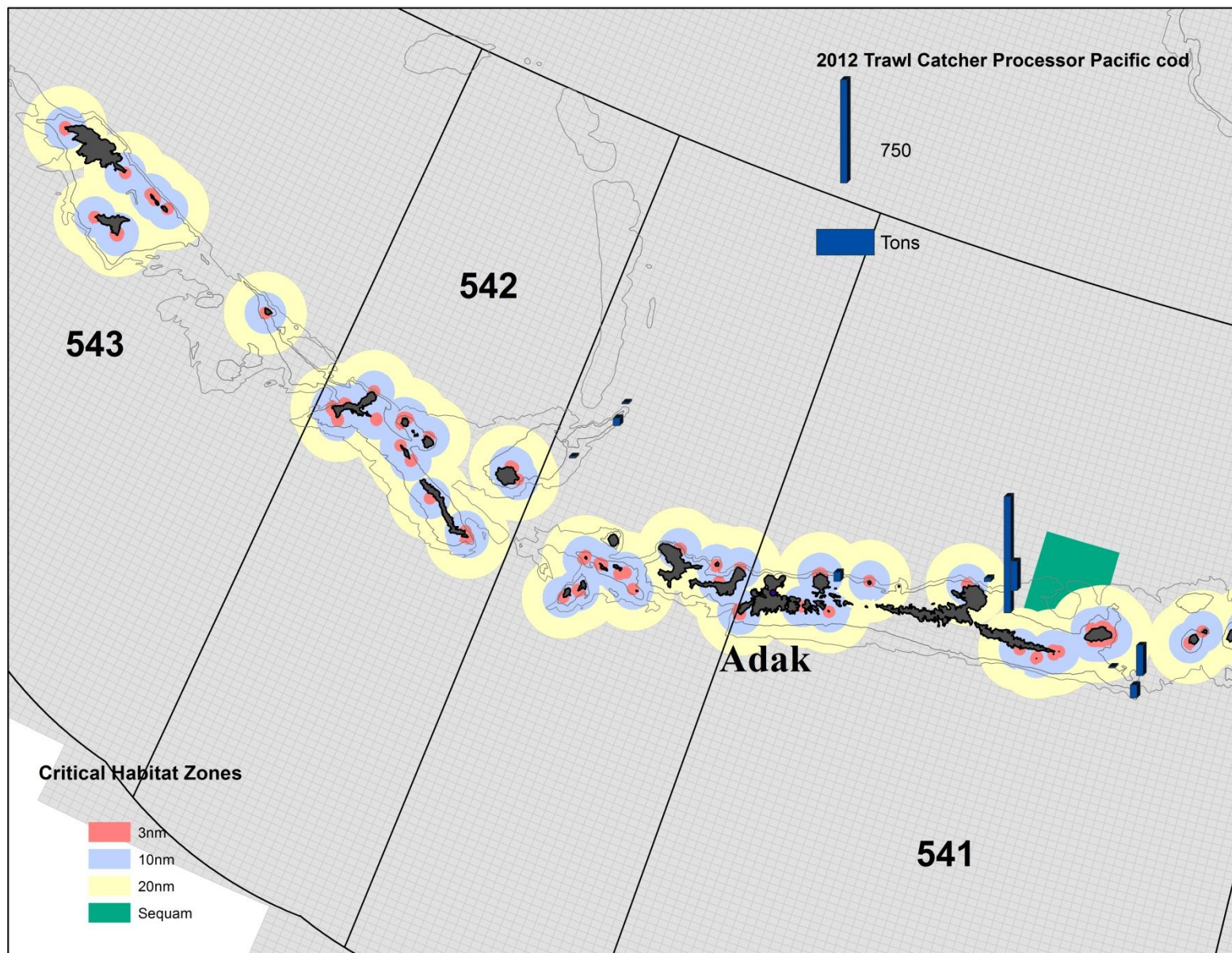
2010 Trawl Catcher Processor Pacific cod Catch in The Aleutian Islands



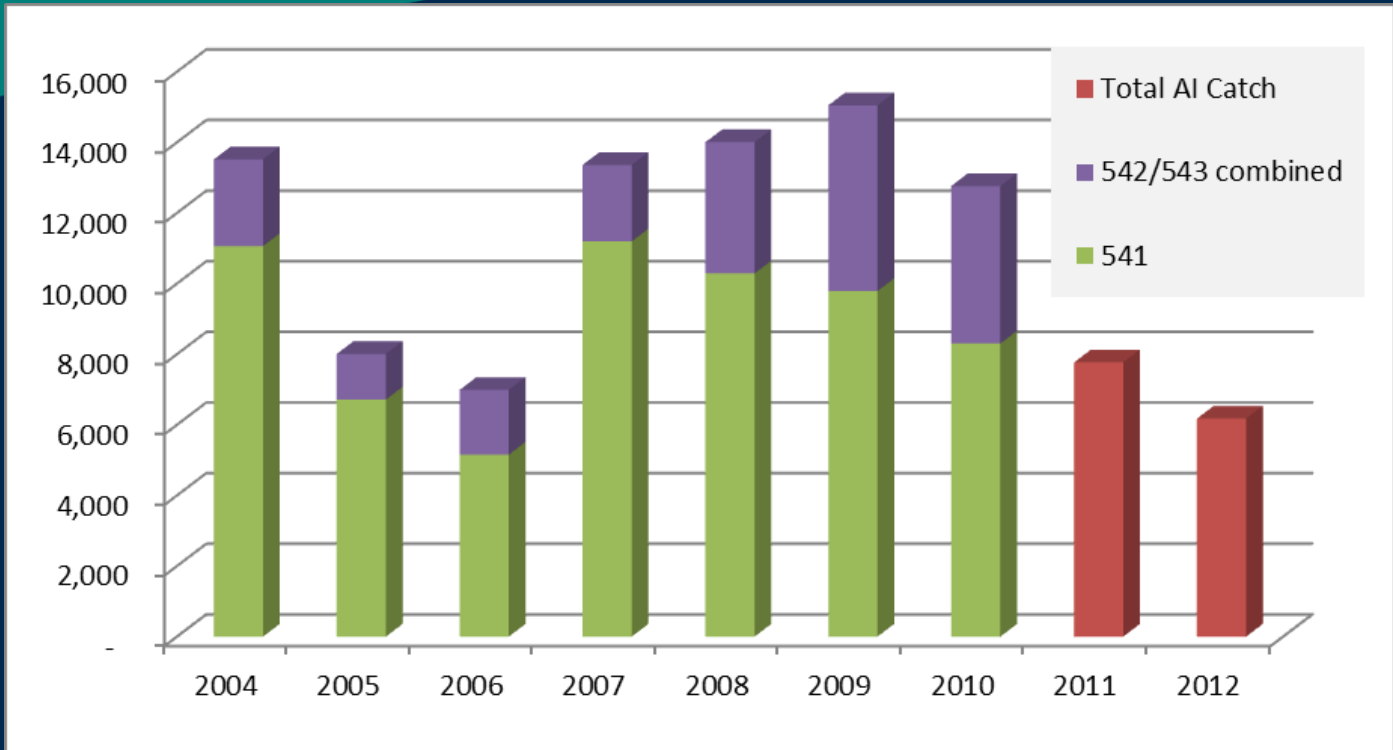
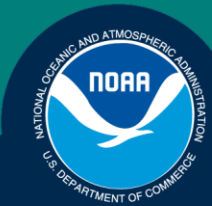
2011 Trawl Catcher Processor Pacific cod Catch in The Aleutian Islands



2012 Trawl Catcher Processor Pacific cod Catch in The Aleutian Islands



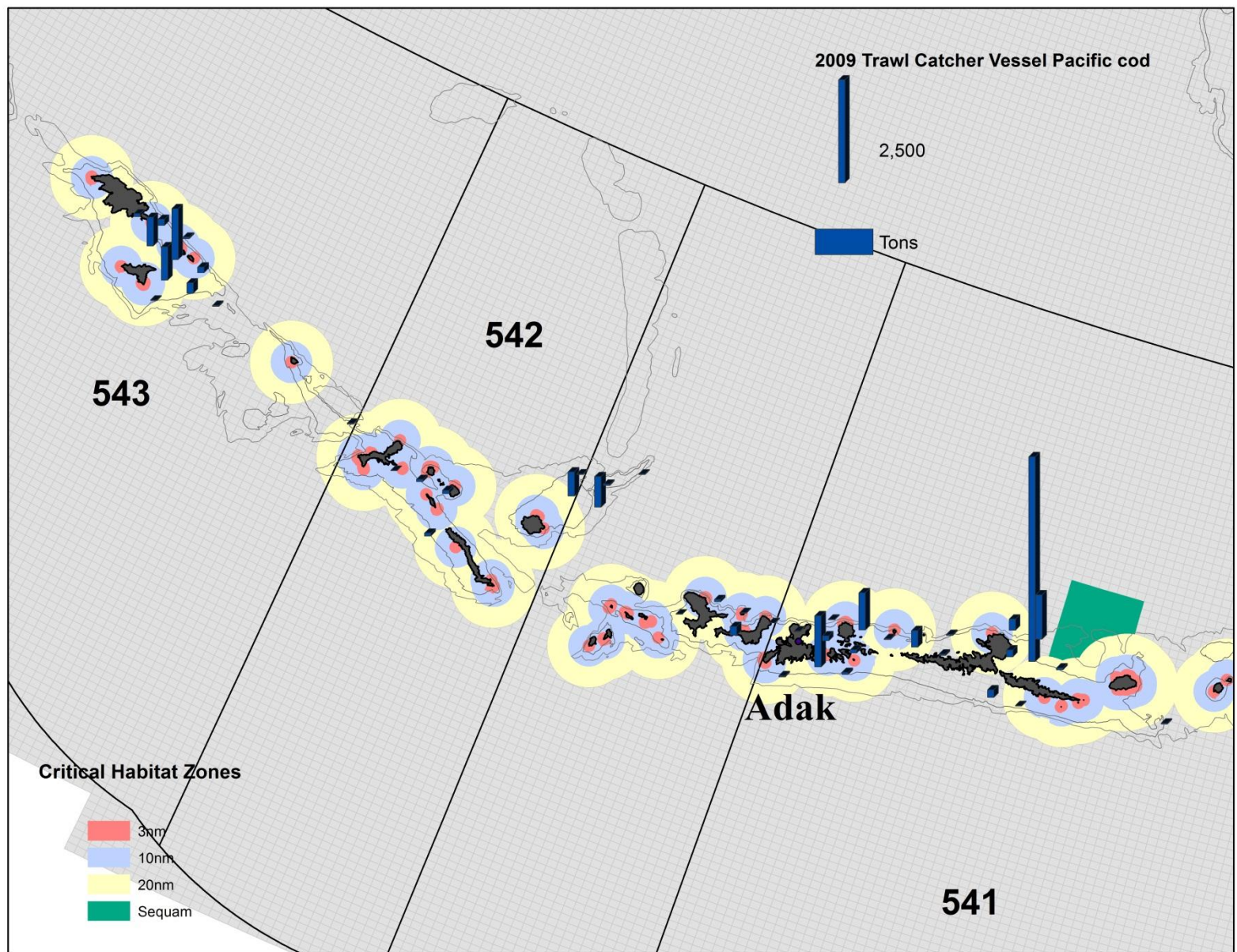
Trawl Catcher Vessel Pacific Cod



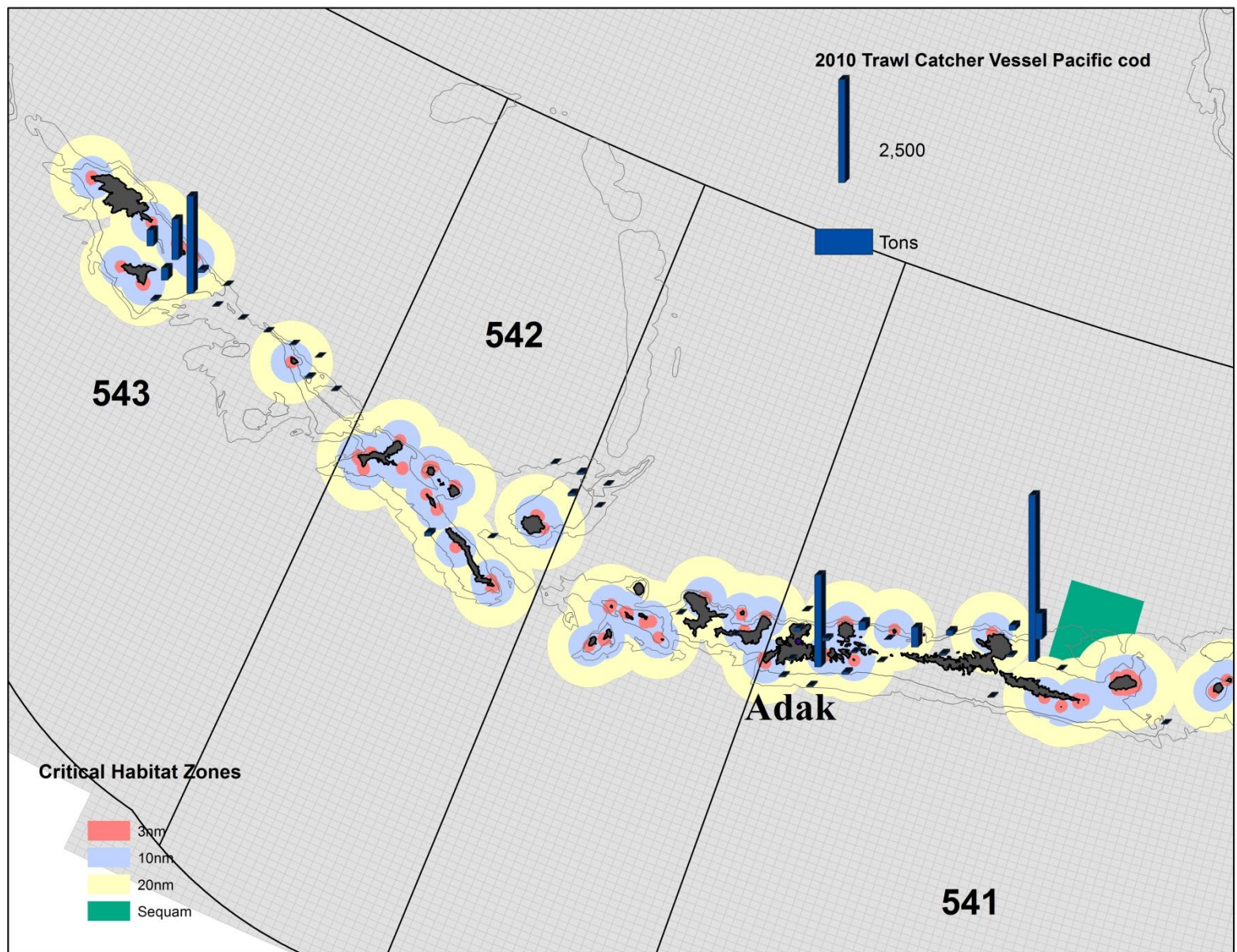
	BSAI TAC*	Total Catch	541	542/543	Total AI Catch	% of BSAI
2004	40,717	41,098	11,062	2,454	13,517	33%
2005	35,847	35,748	6,716	1,291	8,007	22%
2006	33,824	33,647	5,156	1,831	6,987	21%
2007	34,110	31,901	11,193	2,165	13,358	42%
2008	30,842	30,820	10,287	3,715	14,003	45%
2009	29,740	29,630	9,787	5,259	15,046	51%
2010	28,175	28,177	8,301	4,461	12,762	45%
2011	39,897	39,835	c	c	7,766	19%
2012	51,509	44,185	c	c	6,175	14%

*Trawl Catcher vessel Quota; adjusted for reallocations

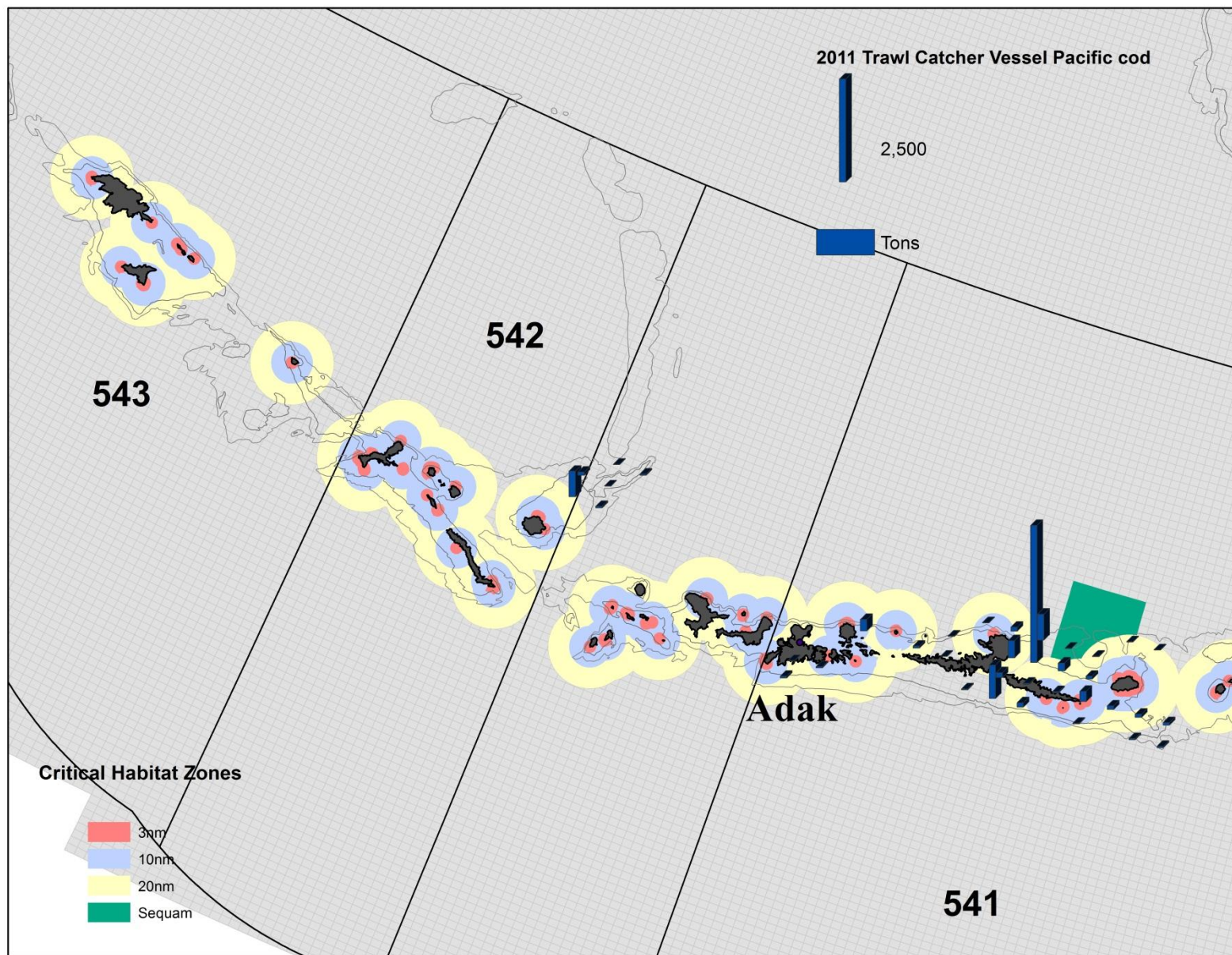
2009 Trawl Catcher Vessel Pacific cod Catch in The Aleutian Islands



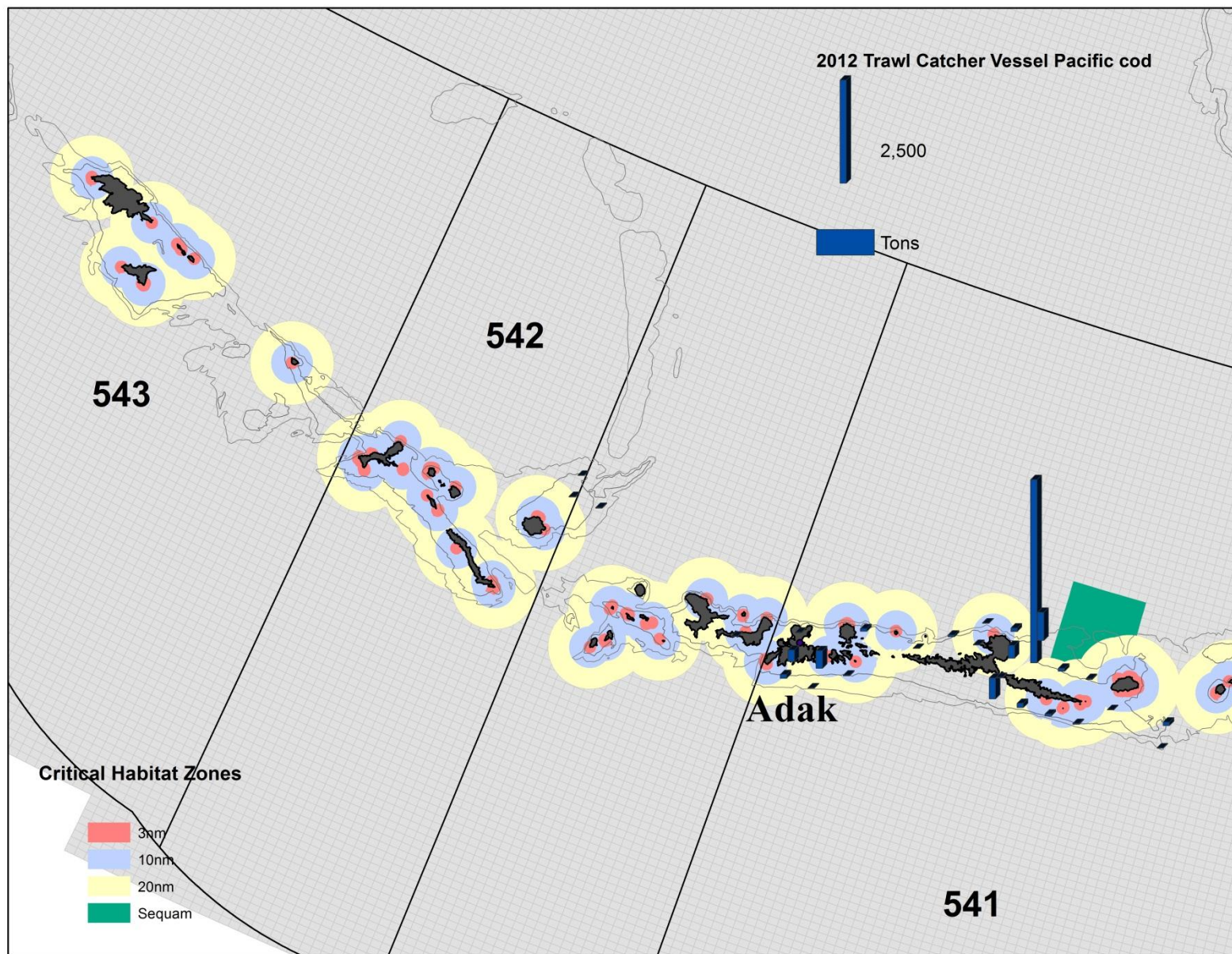
2010 Trawl Catcher Vessel Pacific cod Catch in The Aleutian Islands

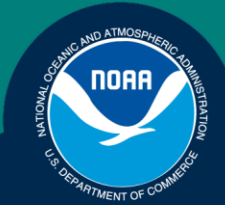


2011 Trawl Catcher Vessel Pacific cod Catch in The Aleutian Islands



2012 Trawl Catcher Vessel Pacific cod Catch in The Aleutian Islands

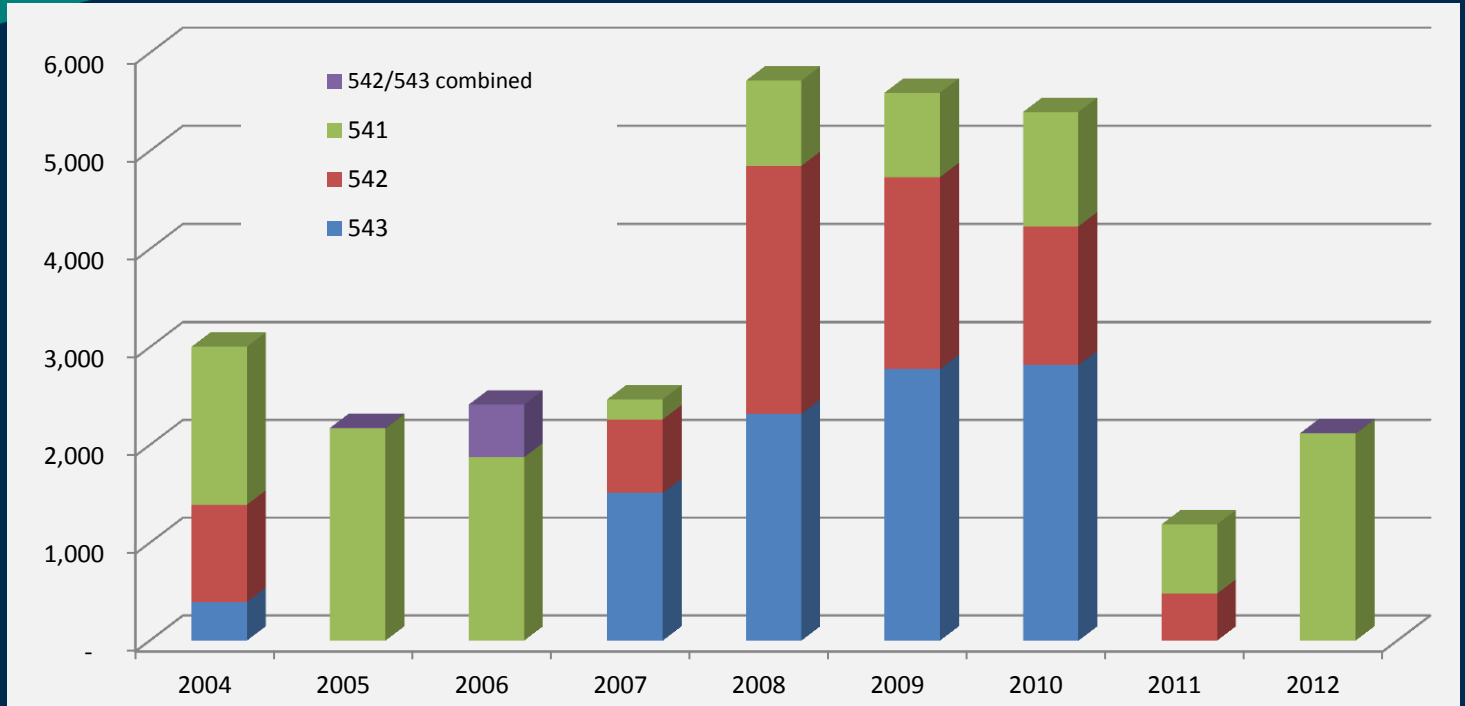
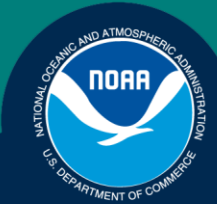




Non-Trawl Gear Pacific cod Restrictions

- 543 closed to Pacific cod (PSC)
- 0-6 nm Critical habitat in 542 closed year round
- 0-10 nm Critical habitat in 541 closed year round
- Seasonal closures
 - Jan 1 – March 1; No fishing inside 0-20 nm Critical habitat, Outside Critical habitat open
 - Mar 1 – Nov 1; 6-20 Critical habitat open in 542, 10-20 nm open in 541, Outside Critical habitat open
 - Nov 1- Dec 31; No fishing in 541 and 542

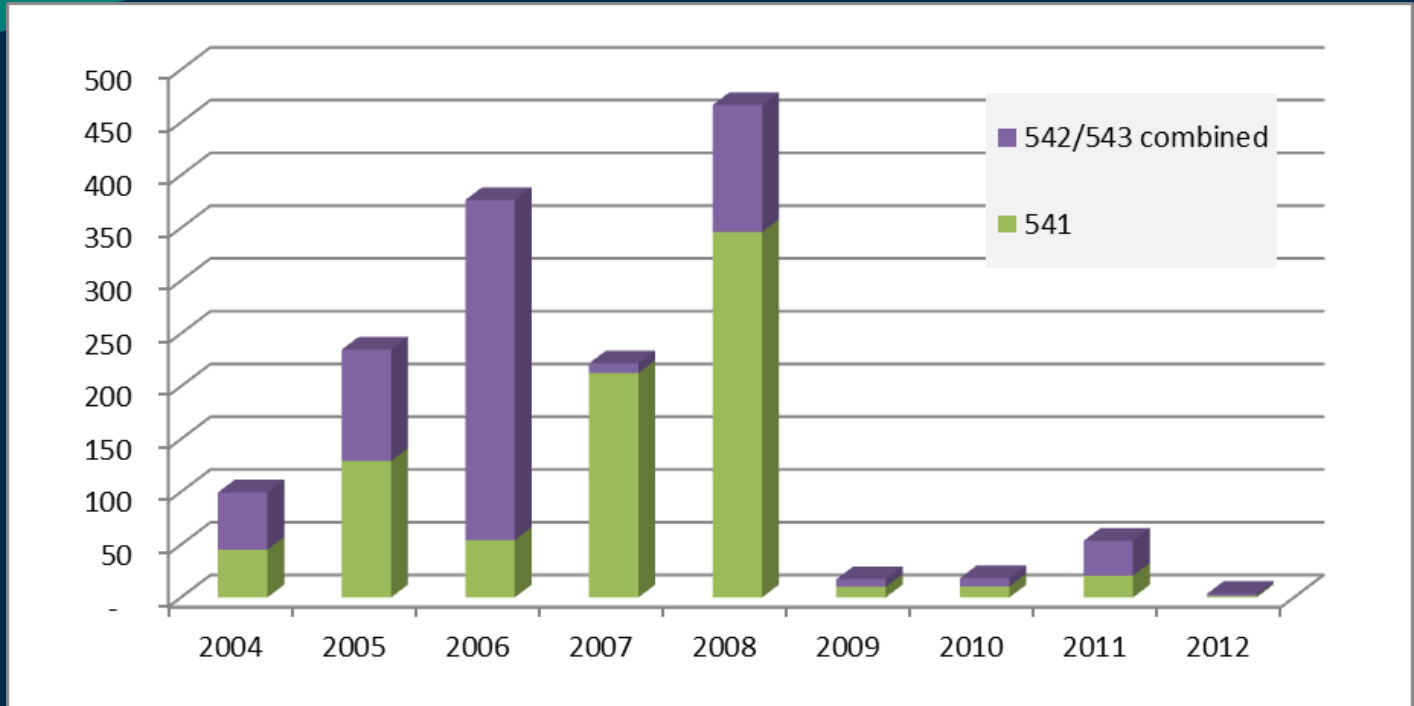
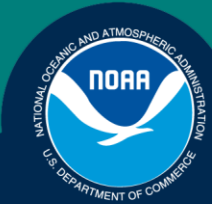
Non-Trawl Catcher Processor Pacific Cod



	BSAI TAC*	Total Catch	541	542	543	Total AI Catch	% of BSAI
2004	101,247	98,736	1,615	994	395	3,003	3%
2005	102,871	104,474	2,171	c	c	2,175	2%
2006	87,762	89,089	1,875	c	c	2,412	3%
2007	70,773	72,025	205	751	1,510	2,467	3%
2008	79,163	79,983	868	2,529	2,319	5,716	7%
2009	87,625	87,845	860	1,957	2,775	5,593	6%
2010	76,540	76,222	1,166	1,414	2,817	5,397	7%
2011	102,894	101,080	708	480	no catch	1,188	1%
2012	116,590	65,198	2,117	c	c	2,120	3%

*HAL CP and POT CP Quotas were combined; adjusted for reallocations

Non-Trawl Catcher Vessel Pacific Cod

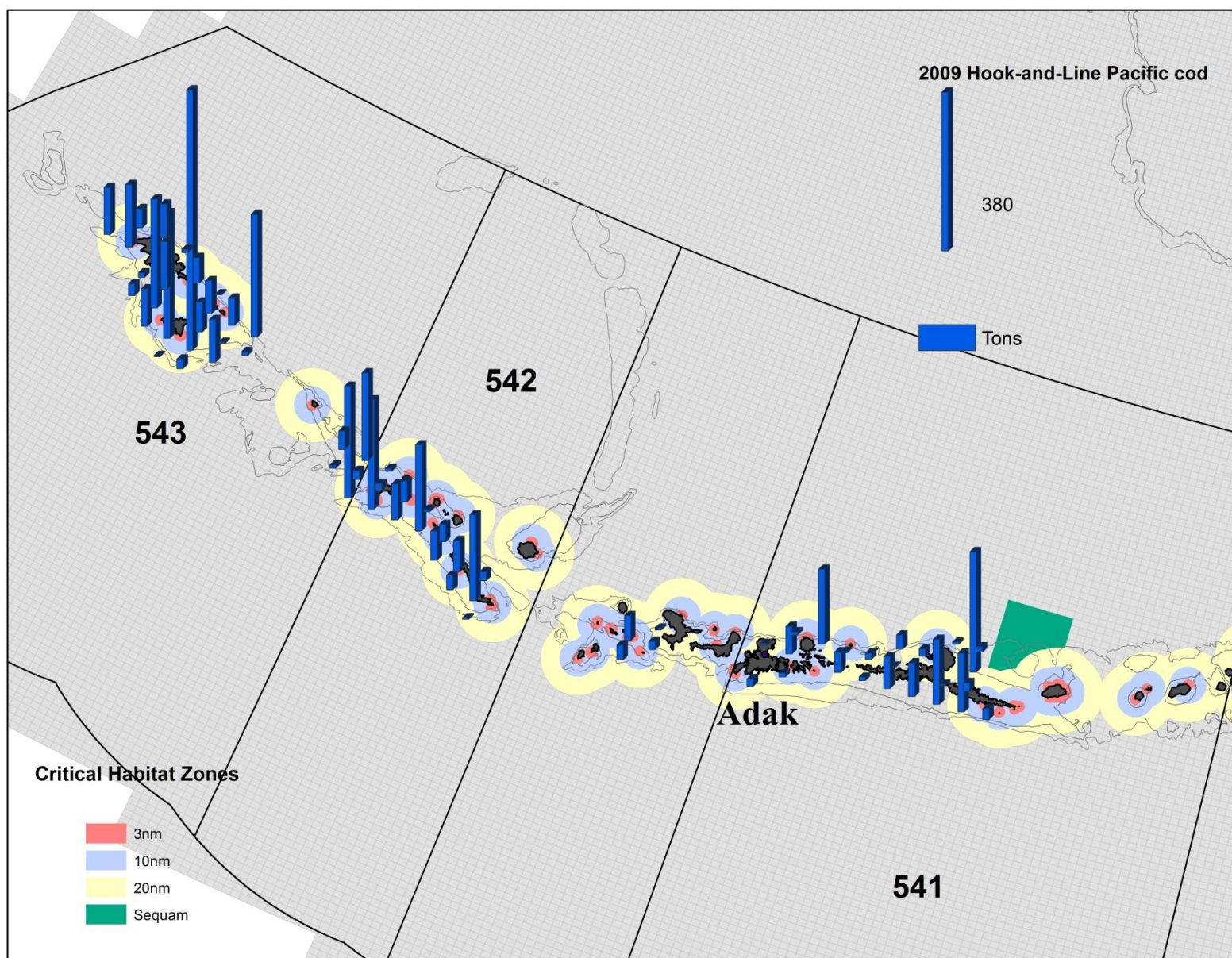


	BSAI TAC*	Total Catch	541	542/543	Total AI Catch	% of BSAI	< 60 HAL / POT	% of CV TAC
2004	15,441	14,962	45	54	100	1%	2,961	19%
2005	15,825	15,272	129	105	235	2%	2,601	16%
2006	17,603	16,981	54	322	377	2%	3,242	18%
2007	15,423	15,321	213	9	222	1%	2,928	19%
2008	16,812	16,892	346	120	467	3%	5,210	31%
2009	10,834	11,167	10	7	17	0.2%	4,434	41%
2010	17,436	17,476	10	8	18	0.1%	5,509	32%
2011	26,560	24,987	21	33	54	0.2%	9,005	34%
2012	27,882	17,089	2	2	4	0.0%	6,445	23%

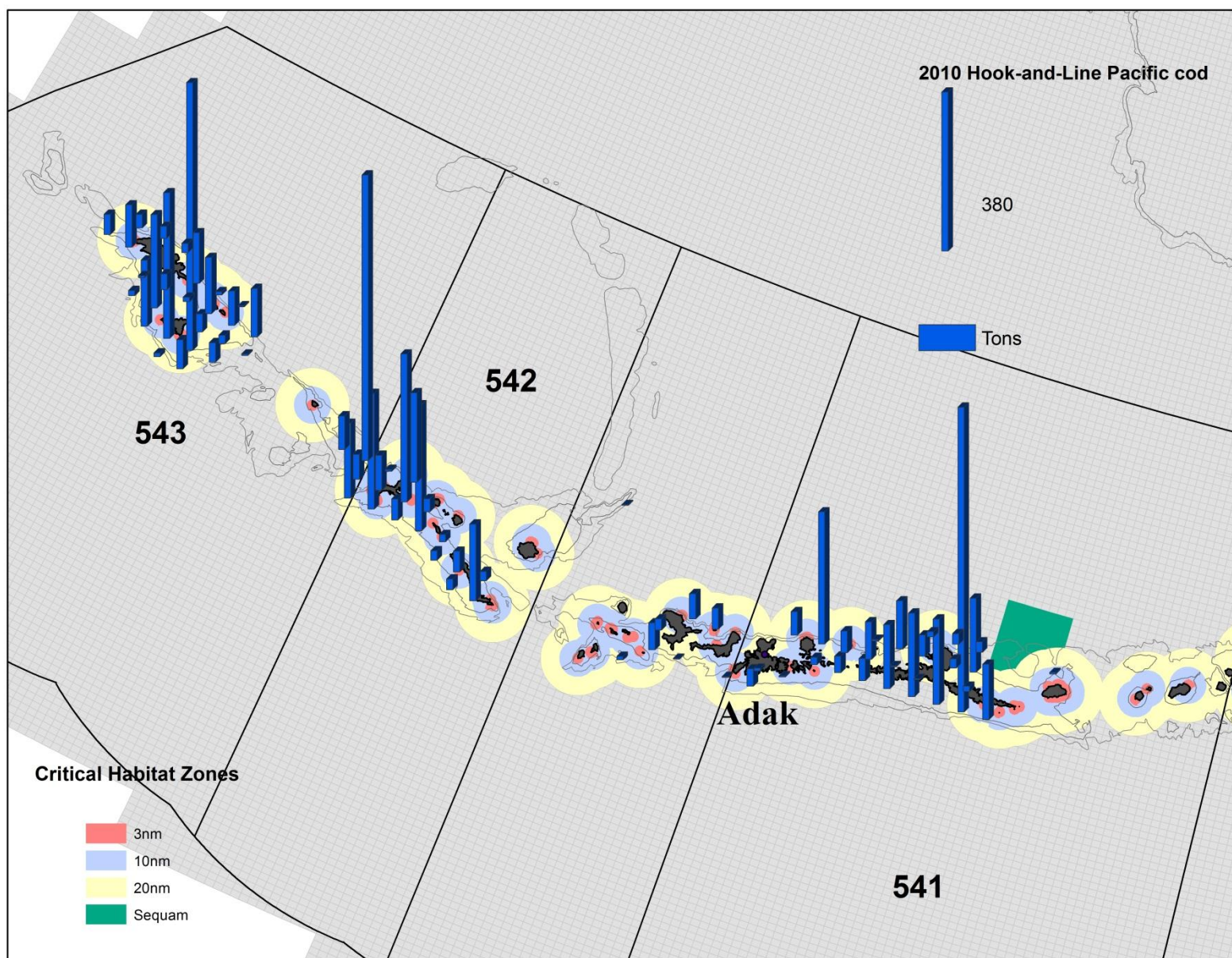
*Includes: > 60 HAL, >60 POT, Jig, <60 HAL/POT; adjusted for reallocations

Expected to get large reallocation in fall to bring total above 9,000 mt (30% +)

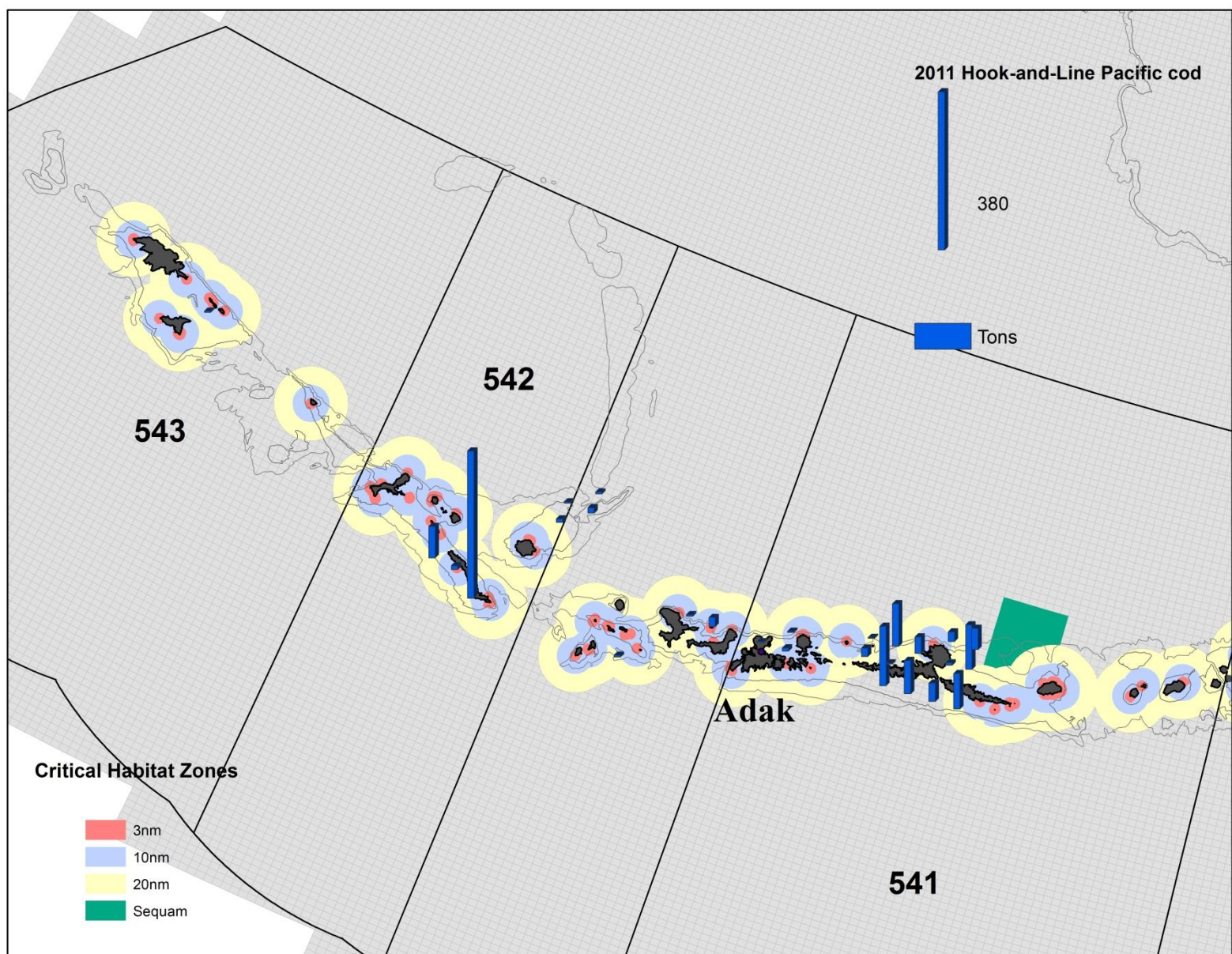
2009 Non-Trawl Pacific cod Catch in The Aleutian Islands



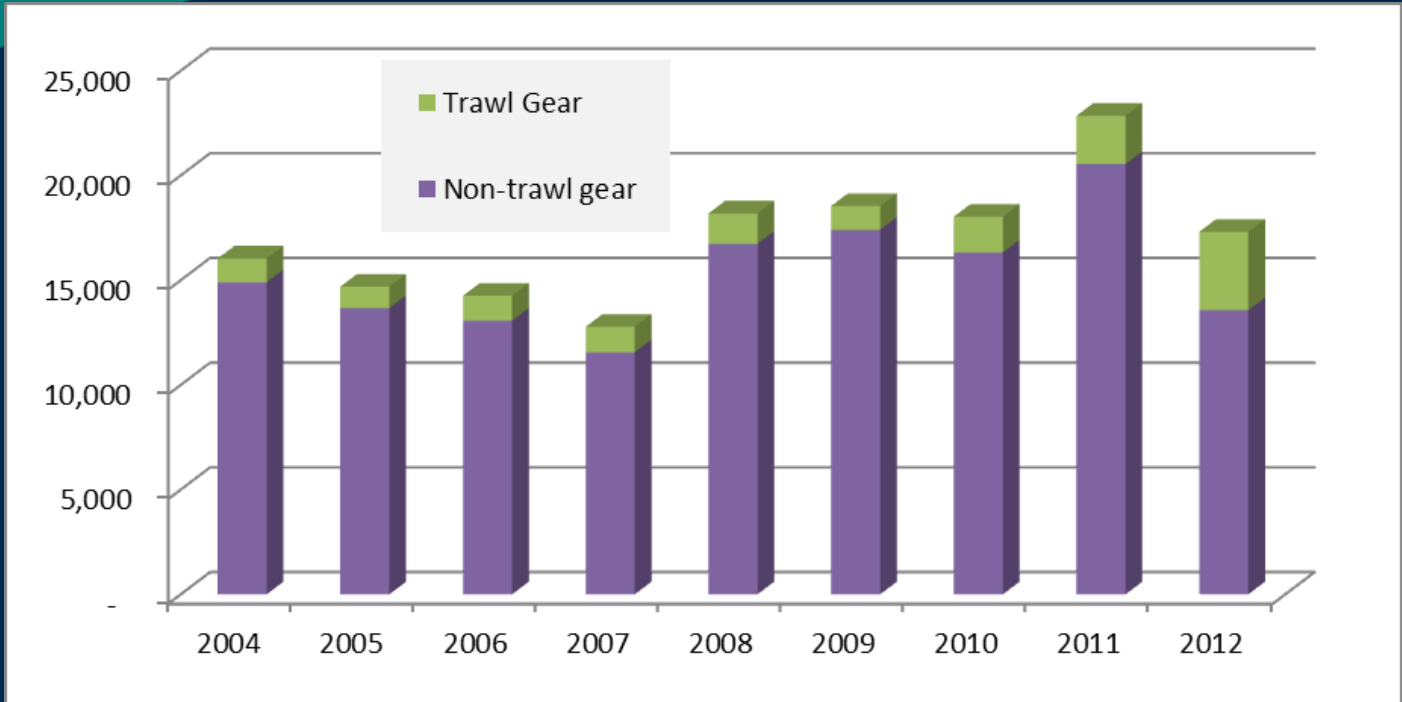
2010 Non-Trawl Pacific cod Catch in The Aleutian Islands



2011 Non-Trawl Pacific cod Catch in The Aleutian Islands



BSAI CDQ Pacific Cod



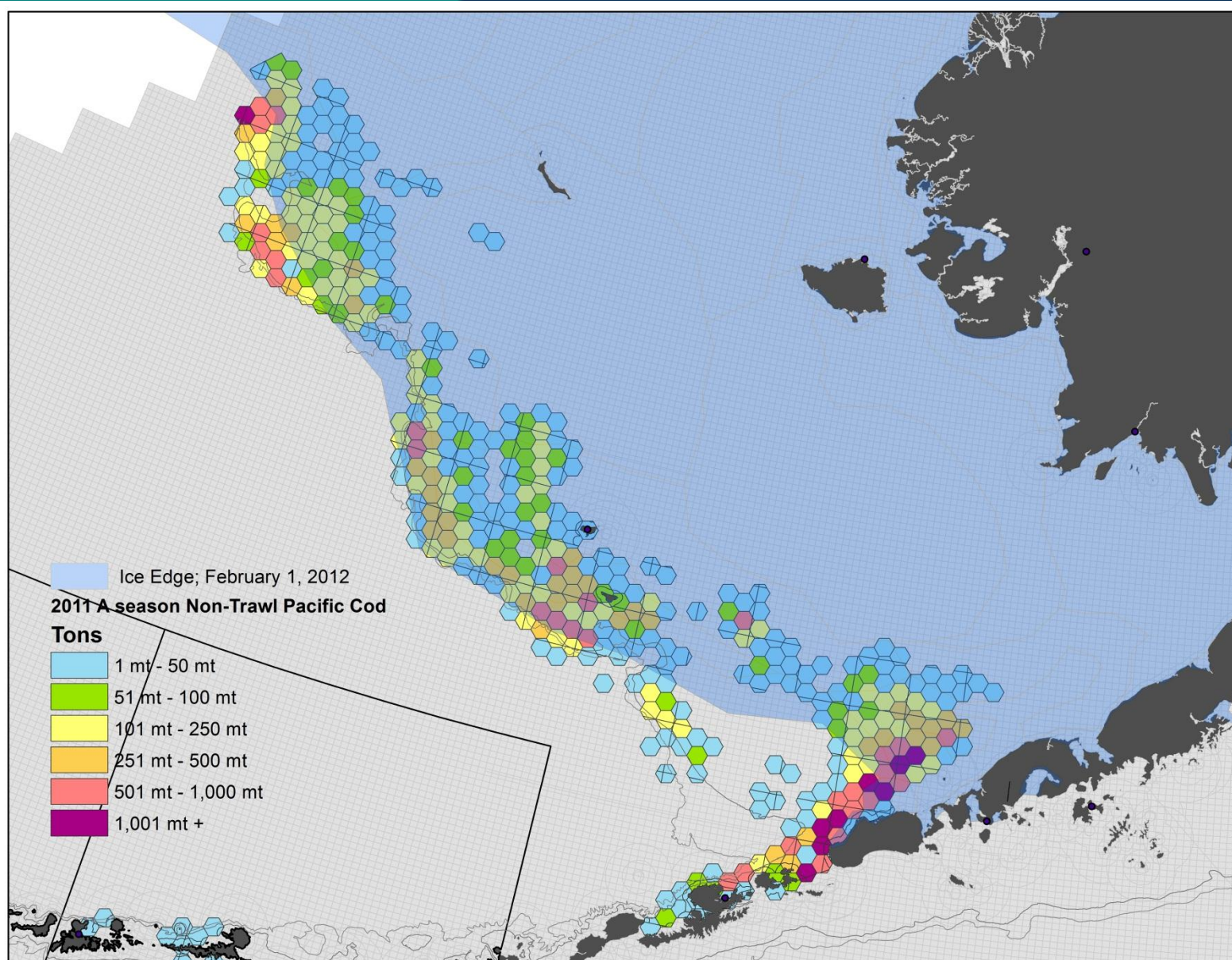
	CDQ TAC	Trawl Gear	Non-trawl gear	Total Catch	Total AI Catch	% of BSAI
2004	16,163	1,131	14,899	16,030	273	2%
2005	15,450	1,021	13,668	14,689	1,002	7%
2006	14,233	1,191	13,064	14,255	1,101	8%
2007	12,804	1,217	11,557	12,773	2,068	16%
2008	18,267	1,451	16,732	18,183	1,730	10%
2009	18,890	1,132	17,407	18,538	887	5%
2010	18,059	1,708	16,321	18,029	3,214	18%
2011	24,391	2,308	20,539	22,847	c	c
2012	27,927	3,742	13,565	17,306	1,297	7%



Non SSL RPA effects on AI Pacific cod fisheries

- Anecdotal evidence suggested that there were larger than average Pacific cod in the Bering sea in 2011 and 2012.
- Large increases of the BSAI Pacific cod ABC in recent years; 35% increase in 2011
- Catch rates and effort in the Bering sea above average in A seasons of 2011 and 2012.
- Freezer Longline Coop formed in August of 2010 that removes the race for fish among hook-and-line catcher processors
- Shoreside processor problems in Adak in A season of 2010 and no operating processor in the first half of 2011
- Ice edge extent of 2012
- Tsunami in Japan

2012 Ice edge effects on Non-trawl Pacific cod fisheries





Pacific Cod Re-initiation Triggers

- Pacific cod in Area 542
 - Non-trawl exceeds 1.5% of the BSAI Pacific cod ABC
 - Trawl exceeds 2.0% of the BSAI Pacific cod ABC
- Pacific cod in Area 541
 - Non-trawl exceeds 1.5% of the BSAI Pacific cod ABC
 - Trawl exceeds 11.25% of the BSAI Pacific cod ABC

	2011		2012	
	<i>BSAI Pacific Cod ABC</i> 235,000 mt		314,000 mt	
	541	542	541	542
Non trawl Trigger Amount	3,525	3,525	4,710	4,710
Total Catch	729	505	2,118	3
Trawl Trigger Amount	26,438	4,700	35,325	6,280
Total Catch	8,211	1,152	8,863	257