

American Samoa Longline Fishery Logbook Summary Report Calendar Year 2005

May 16, 2006

The Federal longline logbook data in this report were compiled by the Pacific Islands Fisheries Science Center with significant support from American Samoa's Department of Marine and Wildlife Resources (DMWR). The DMWR began processing the longline logbook data locally at the beginning of 2000. Logbook data are summarized by date of haul as shown by the table below. All submitted logbook data for longline activities during 2005 have been processed and are reported in this preliminary report. As of May 16, 2006, the documented delinquency rate according to the DMWR Daily Effort Census and Delinquency Reporting System for 2005 was 1.62%. The summary data in this report are considered preliminary and subject to change as additional delinquent data are received and processed.

According to the Daily Effort Census, 37 vessels were engaged in longline fishing during 2005. Of these, 36 vessels turned in longline logs for sets made during the year (Figure 1.) The logbooks submitted by the 36 vessels indicated they made 4,319 sets and deployed 11,119,496 hooks. Even though the number of vessels turning in logs is down 11% from the 40 vessels reporting last year and the number of sets is down by 12%, the number of hooks set is only 5% less than last year because of the higher proportion of large vessels in the fleet; on average, the larger vessels deploy more hooks per set.

Albacore continued to dominate the catch with 192,578 fish caught in 2005 (Figure 4.) This is a 28% increase over the catch of albacore last year. Catches of all other species decreased from last year, except for mahimahi (41% increase). Lower catches were recorded for skipjack (34% decrease), bigeye tuna (34%), billfish (27%), sharks (26%), yellowfin tuna (21%), and wahoo (15%). Lower catches of these species may be due to an increased targeting of albacore.

The CPUE for albacore increased 34% to 17.32 fish per 1000 hooks in 2005 compared to a CPUE of 12.89 for 2004. The CPUE's for other species followed the corresponding changes in catch. Compared with 2004, the CPUE for mahimahi increased by 45%. The skipjack tuna CPUE decreased by 31%, followed by bigeye tuna (30%), billfish (23%), sharks (22%), yellowfin tuna (17%), and wahoo (10%).

In addition to recording their catches of fish, American Samoa longline captains are required to report incidental interactions with protected species, including sea turtles, seabirds, and marine mammals. During 2005, no interactions with protected species were reported.

Western Pacific Logbook Summary Report for Calendar Year 2005

Vessels landing or based in American Samoa
Based on Date of Haul for all areas

TRIP INFORMATION

Number of Vessels:	36
Number of Sets:	4319
1000's of Hooks Set:	11119
Number of Lightsticks Used:	2166

CATCH INFORMATION

Species	# Caught	# Kept	# Finned	# Caught/ 1000 Hooks
BILLFISH				
Black marlin	4	1		0.00
Blue marlin	1740	380		0.16
Striped Marlin	232	71		0.02
Sailfish	555	56		0.05
Spearfish	495	85		0.04
Swordfish	228	136		0.02
TOTALS	3254	729		0.29
SHARKS				
Blue shark	5304	6	2	0.48
Shortfin Mako Shark	249	2		0.02
Thresher Shark	281	1		0.03
White Tip Oceanic Shark	1211	2		0.11
Other Pelagic Sharks	288	0		0.03
TOTALS	7333	11	2	0.66
TUNA				
Albacore	192578	192242		17.32
Bigeye Tuna	9752	9362		0.88
Bluefin Tuna	35	31		0.00
Skipjack Tuna	30183	24306		2.71
Yellowfin Tuna	30055	28832		2.70
TOTALS	262603	254773		23.62
OTHER PELAGICS				
Mahimahi	3611	2772		0.32
Moonfish	775	225		0.07
Oilfish	3250	49		0.29
Pomfret	733	239		0.07
Wahoo	15773	15343		1.42
TOTALS	24142	18628		2.17
NON-PMUS				
Other Pelagic Fish	57	29		0.01

Figure 1. American Samoa Longline Vessels by Year

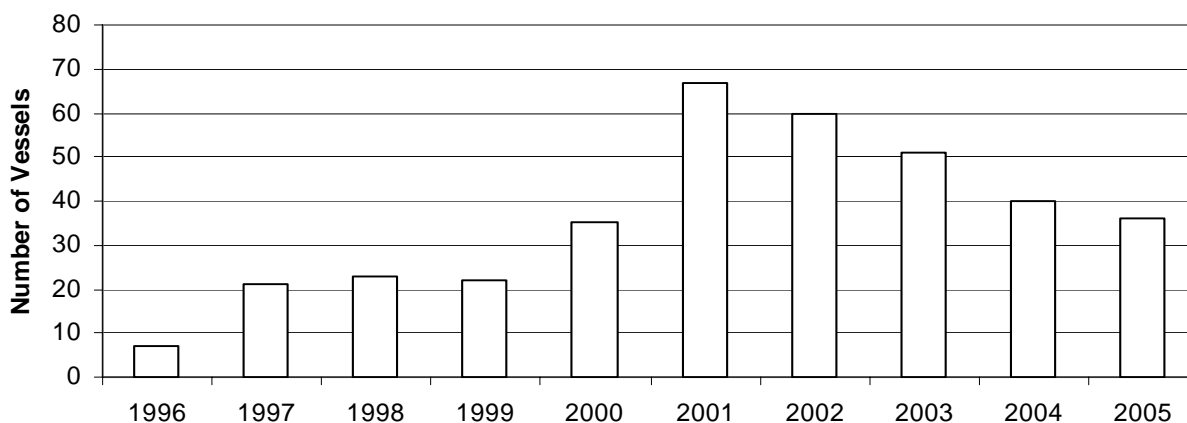


Figure 2. Number of Sets by American Samoa Longline Vessels by Year

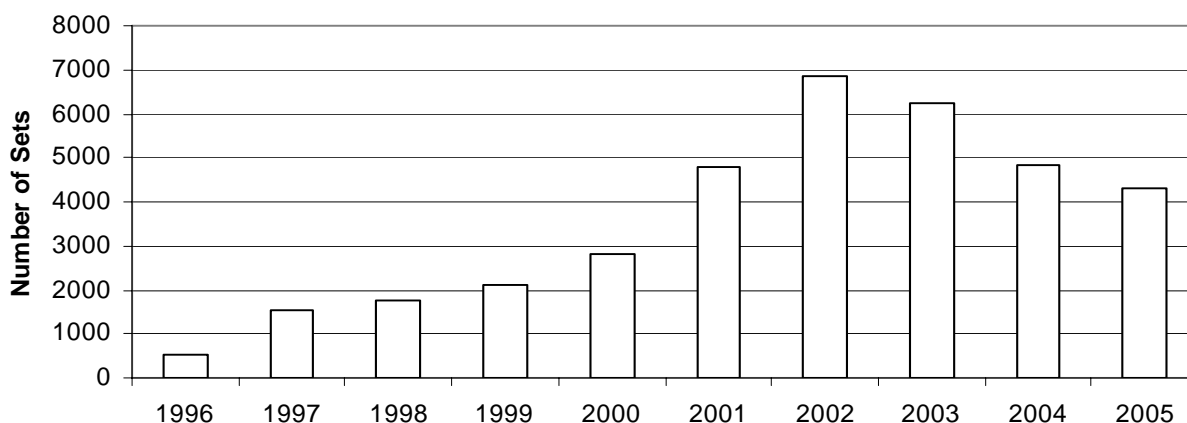


Figure 3. Number of Hooks Set by the American Samoa Longline Fleet by Year

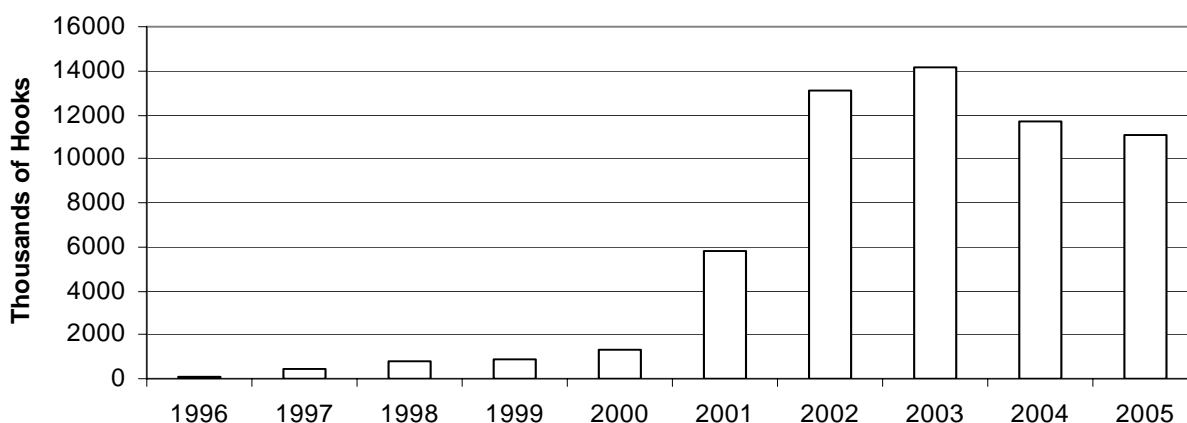


Figure 4. American Samoa Longline Albacore Catch by Year

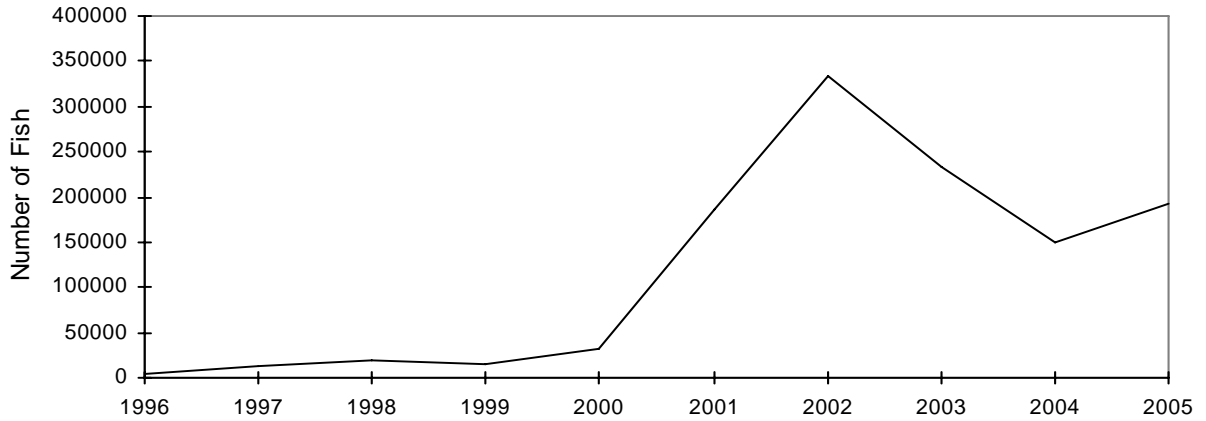


Figure 5. American Samoa Longline Tuna Catch by Year

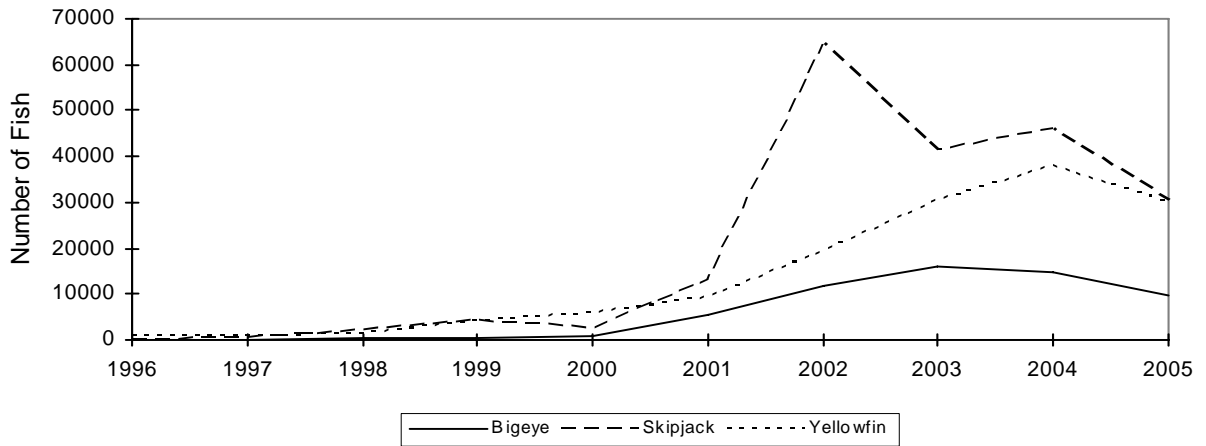


Figure 6. American Samoa Longline Catch of Miscellaneous Pelagic Fish by Year

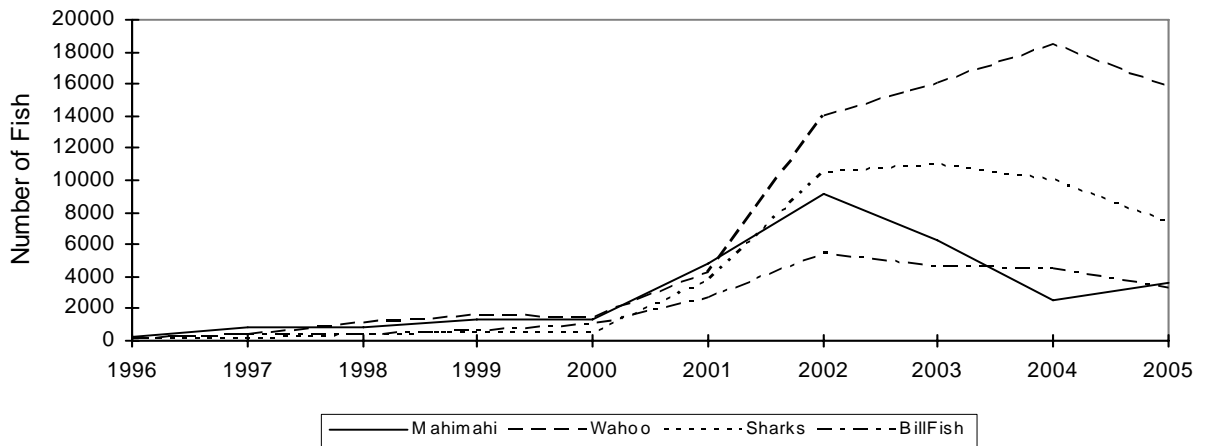


Figure 7. American Samoa Longline Albacore Catch per 1000 Hooks by Year



Figure 8. American Samoa Longline Tuna Catch per 1000 Hooks by Year

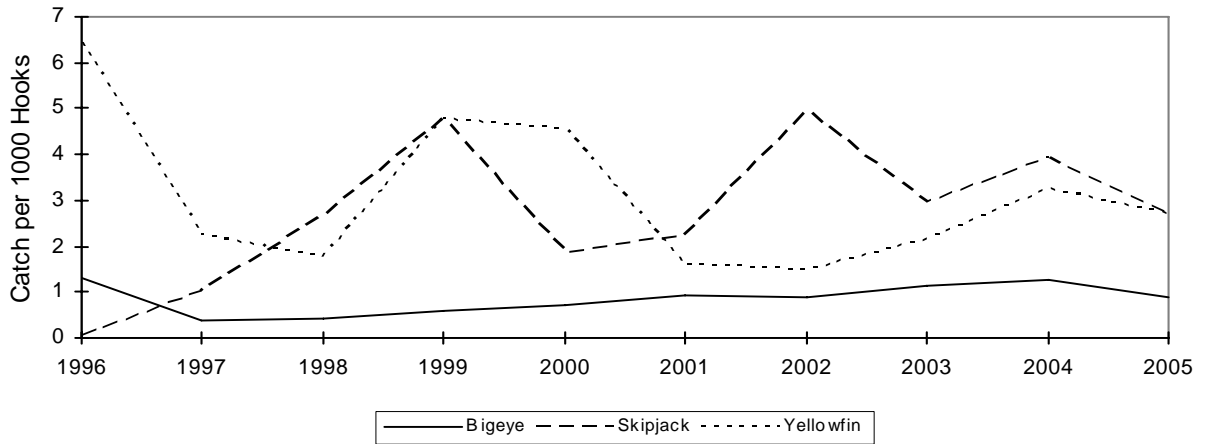


Figure 9. American Samoa Longline Catch of Other Pelagic Fish per 1000 Hooks by Year

