

Department of Marine & Wildlife Resources
Report on the NMFS Logbook Program for the
American Samoa Longline Fishery
October-December 2006

March 14, 2007

Logbook data in this report are summarized by date of haul as shown in the following table. All submitted logbook data for longline activities during the fourth quarter of 2006 have been processed and are reported in this preliminary report. As of March 14, 2007, the documented delinquency rate according to the Department of Marine and Wildlife Resources (DMWR) Daily Effort Census and Delinquency Reporting System for the fourth quarter of 2006 was 5.16%. The summary data in this report are considered preliminary and subject to change as additional delinquent data are received and processed.

According to the Daily Effort Census, 30 vessels were engaged in longline fishing during the fourth quarter of 2006 and so far 25 of these vessels turned in some or all of their longline logs for sets made during the quarter. These 25 vessels made 1,304 sets and set 3,888,497 hooks. This quarter is almost identical to the fourth quarter of last year both in terms of the effort and the catch. The number of vessels participating this quarter is identical with the year ago quarter with the number of sets decreasing by 2% and the number of hooks set increasing by 5%. The average number of hooks per set increased slightly from 2779 to 2981, reflecting the continuing trend toward a fishing fleet of fewer but larger vessels.

The total catch for all species of 104,890 fish was almost equal to the 104,310 fish caught in the fourth quarter of last year. Albacore continued to dominate the catch with 77,750 fish caught in the fourth quarter of 2006. This is 5% more than the 73,800 albacore caught in the fourth quarter of last year. The catch of bigeye tuna increased by 26% compared to the 4th quarter of 2005 while the catch of skipjack tuna decreased by 25% and the catch of yellowfin tuna decreased by 53%. The catch of mahimahi was 2.5 times the catch for the 2005 fourth quarter while the catch of billfish increased by 31%. On the down side the catch of wahoo decreased by 13% from the 2005 fourth quarter while the catch of sharks decreased by 9%.

Albacore Catch/1000 hooks was almost equal to the year ago quarter value since both the albacore catch and the number of hooks both increased by 5%. The Catch/1000 Hooks for all other species rose and fell with the catches for these species. Bigeye tuna Catch/1000 Hooks increased by 20%, skipjack tuna Catch/1000 Hooks decreased by 29% and yellowfin tuna Catch/1000 Hooks decreased by 55% compared to the fourth quarter of 2005. The Catch/1000 Hooks of mahimahi increased by 2.5 times its value for the year ago quarter while the Catch/1000 Hooks of billfish increased by 24%. On the downside the Catch/1000 Hooks of wahoo decreased by 17% and the shark Catch/1000 Hooks decreased by 14%.

Western Pacific Logbook Summary Report for 4th Quarter 2006

Vessels landing or based in American Samoa
Based on Date of Haul for all areas

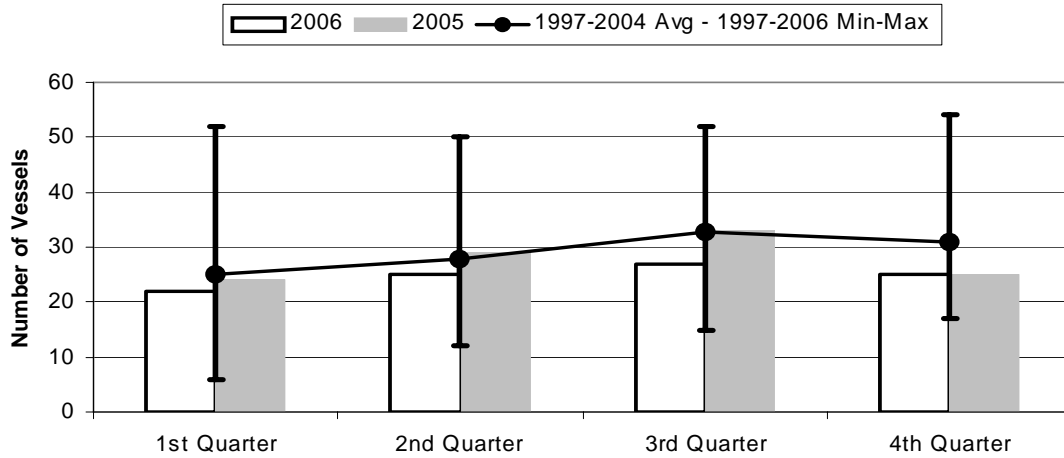
TRIP INFORMATION

Number of Vessels:	25
Number of Sets:	1304
1000's of Hooks Set:	3888
Number of Lightsticks Used:	7415

CATCH INFORMATION

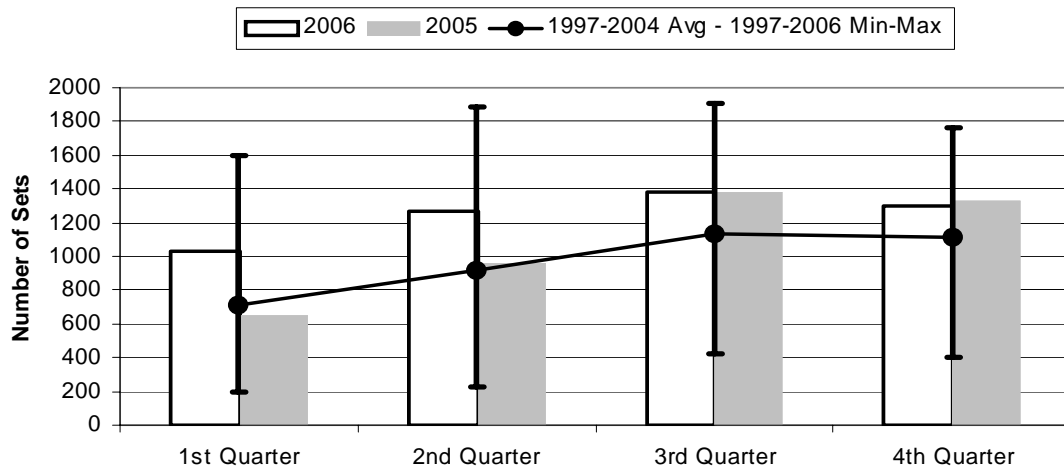
Species	# Caught	# Kept	# Finned	# Caught/ 1000 Hooks
BILLFISH				
Black marlin	2	0		0.00
Blue marlin	773	83		0.20
Striped Marlin	102	24		0.03
Sailfish	146	11		0.04
Spearfish	208	8		0.05
Swordfish	433	370		0.11
TOTALS	1664	496		0.43
SHARKS				
Blue shark	1279	2		0.33
Shortfin Mako Shark	87	16		0.02
Thresher Shark	84	0		0.02
White Tip Oceanic Shark	241	0		0.06
Other Sharks	99	0		0.03
TOTALS	1790	18		0.46
TUNA				
Albacore	77750	77726		19.99
Bigeye Tuna	3874	3475		1.00
Bluefin Tuna	5	1		0.00
Skipjack Tuna	7152	5430		1.84
Yellowfin Tuna	3079	2919		0.79
TOTALS	91860	89551		23.62
OTHER PELAGICS				
Mahimahi	620	340		0.16
Moonfish	197	70		0.05
Oilfish	2976	17		0.77
Pomfret	189	43		0.05
Wahoo	5476	4895		1.41
TOTALS	9458	5365		2.43
NON-PMUS				
Other Pelagic Fish	117	7		0.03

Figure 1. American Samoa Longline Vessels Submitting Logs by Quarter for



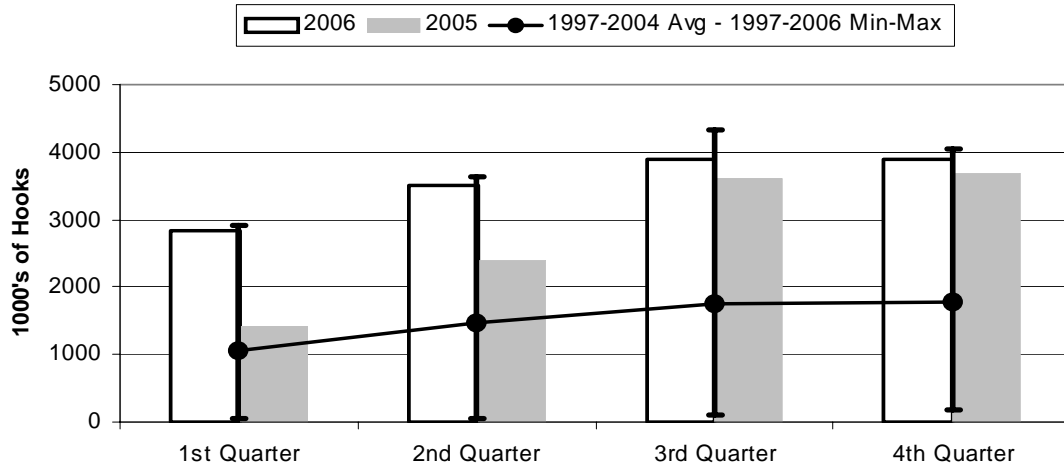
	1st Quarter	2nd Quarter	3rd Quarter	4th Quarter
2006	22	25	27	25
2005	24	29	33	25
1997-2006 Max	52	50	52	54
1997-2004 Avg	25.0	27.9	32.9	31.0
1997-2006 Min	6	12	15	17

Figure 2. Number of Sets by American Samoa Longline Vessels by Quarter for



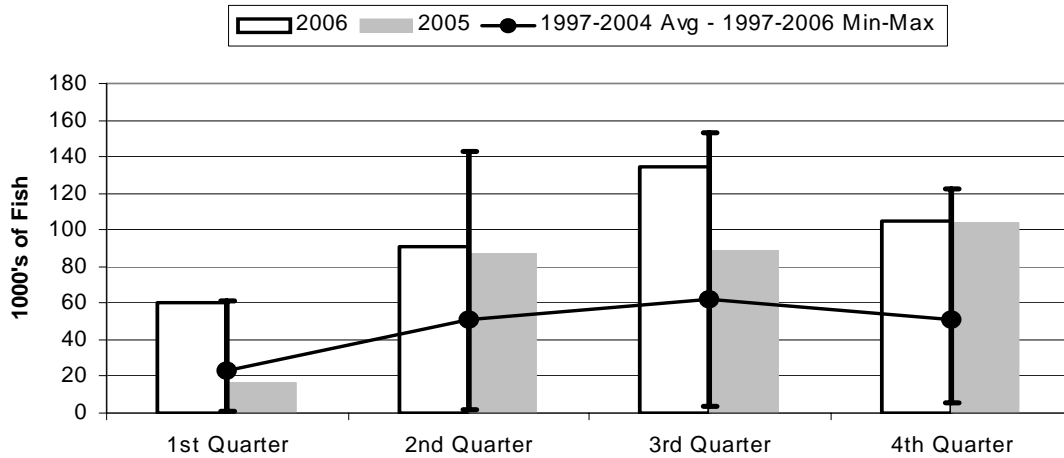
	1st Quarter	2nd Quarter	3rd Quarter	4th Quarter
2006	1027	1271	1383	1304
2005	653	956	1384	1326
1997-2006 Max	1602	1886	1903	1758
1997-2004 Avg	715	913	1130	1110
1997-2006 Min	192	223	424	402

Figure 3. Number of Hooks Set by the American Samoa Longline Fleet by Quarter for



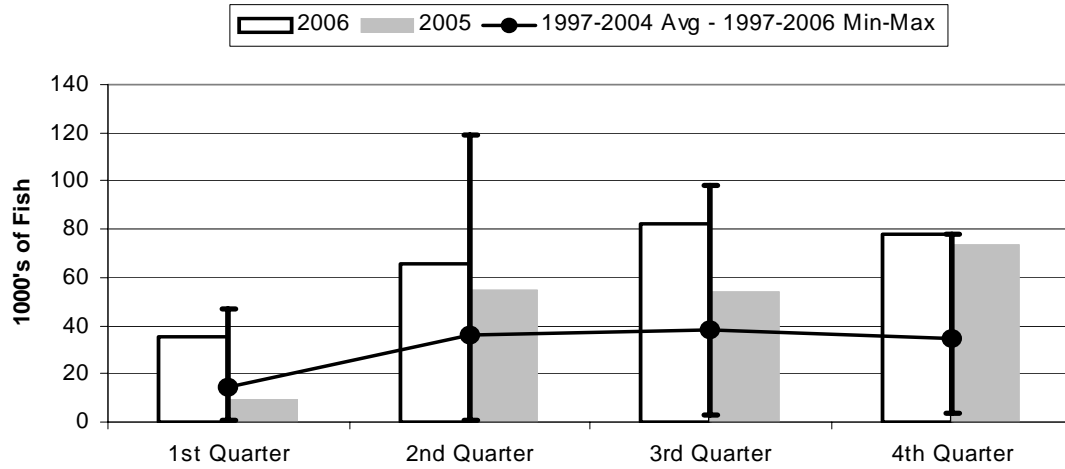
	1st Quarter	2nd Quarter	3rd Quarter	4th Quarter
2006	2837	3502	3905	3888
2005	1427	2400	3608	3685
1997-2006 Max	2902	3629	4338	4044
1997-2004 Avg	1044	1462	1751	1766
1997-2006 Min	41	51	101	175

Figure 4. American Samoa Longline Total Catch (All Species) by Quarter for



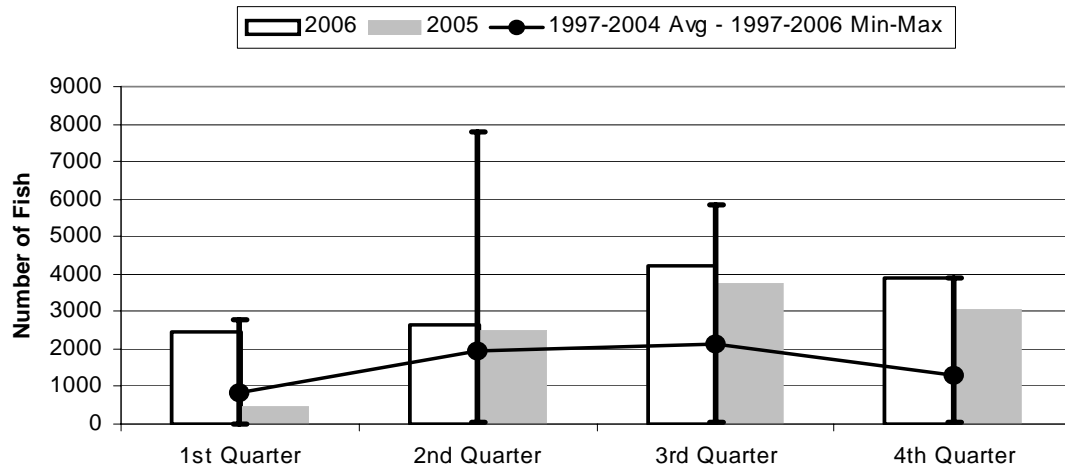
	1st Quarter	2nd Quarter	3rd Quarter	4th Quarter
2006	60.64	90.81	134.23	104.89
2005	17.15	87.16	88.71	104.31
1997-2006 Max	61.24	142.60	153.30	122.34
1997-2004 Avg	22.92	50.84	62.07	51.24
1997-2006 Min	1.32	1.42	4.13	5.20

Figure 5. American Samoa Longline Albacore Catch by Quarter for



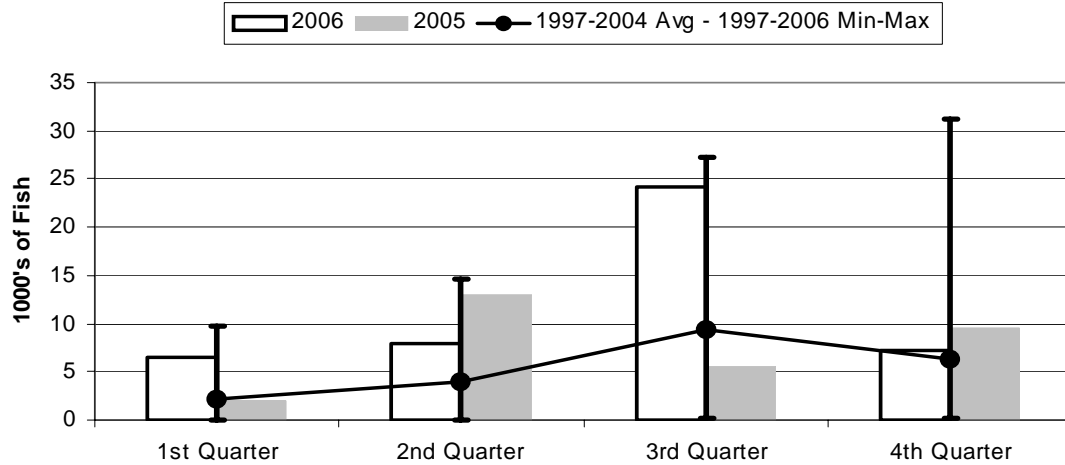
	1st Quarter	2nd Quarter	3rd Quarter	4th Quarter
2006	35.14	65.81	82.53	77.75
2005	9.38	54.90	54.46	73.80
1997-2006 Max	46.98	118.99	98.09	77.75
1997-2004 Avg	14.41	35.94	37.92	34.80
1997-2006 Min	0.94	0.85	3.18	3.47

Figure 6. American Samoa Longline Bigeye Tuna Catch by Quarter for



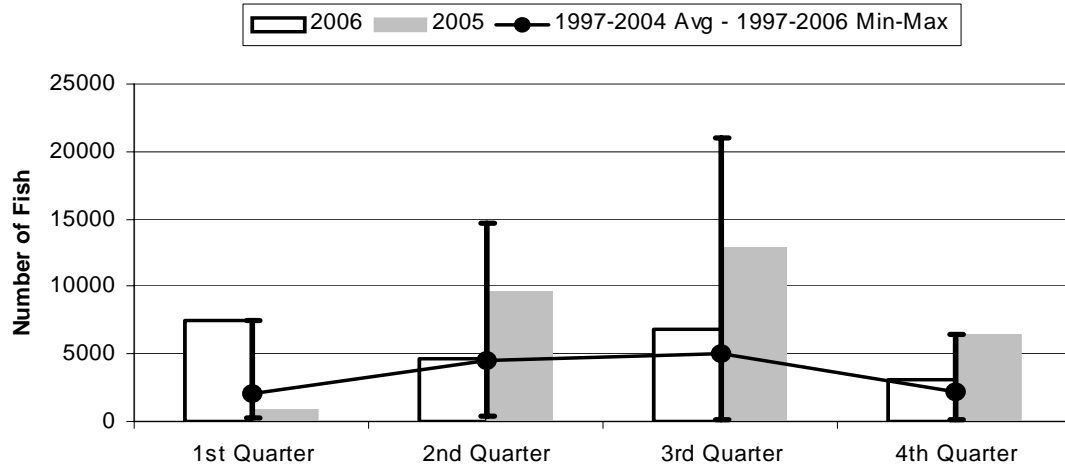
	1st Quarter	2nd Quarter	3rd Quarter	4th Quarter
2006	2437	2647	4206	3874
2005	459	2489	3742	3060
1997-2006 Max	2781	7785	5834	3874
1997-2004 Avg	821	1960	2137	1322
1997-2006 Min	6	26	55	55

Figure 7. American Samoa Longline Skipjack Tuna Catch by Quarter for



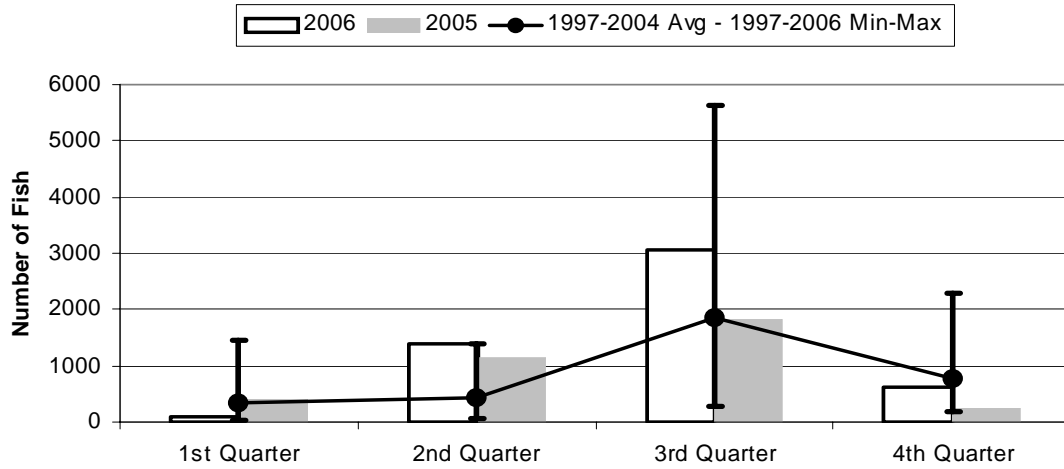
	1st Quarter	2nd Quarter	3rd Quarter	4th Quarter
2006	6.58	7.85	24.20	7.15
2005	2.06	12.93	5.64	9.55
1997-2006 Max	9.81	14.61	27.23	31.19
1997-2004 Avg	2.22	3.92	9.32	6.32
1997-2006 Min	0.00	0.01	0.24	0.18

Figure 8. American Samoa Longline Yellowfin Tuna Catch by Quarter for



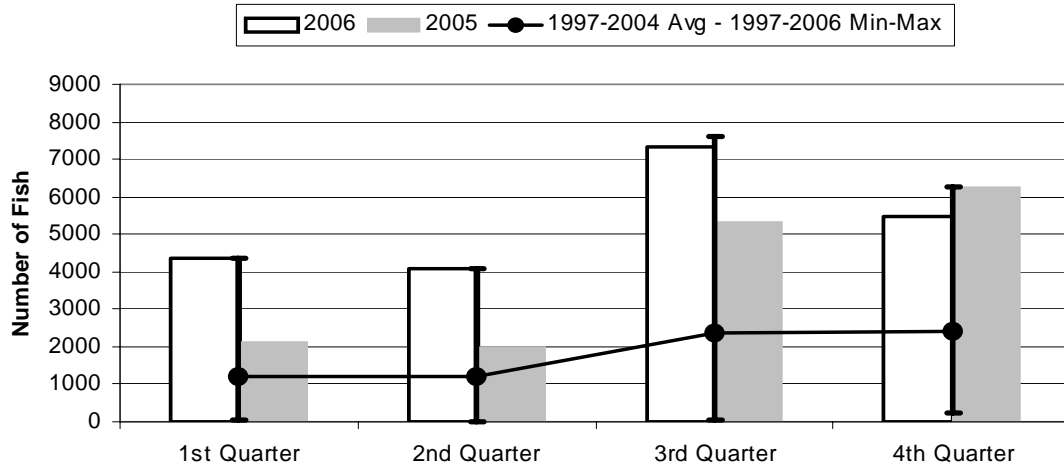
	1st Quarter	2nd Quarter	3rd Quarter	4th Quarter
2006	7419	4676	6840	3079
2005	946	9680	12944	6480
1997-2006 Max	7419	14681	20993	6480
1997-2004 Avg	2088	4486	5015	2177
1997-2006 Min	213	356	84	177

Figure 9. American Samoa Mahimahi Catch by Quarter for



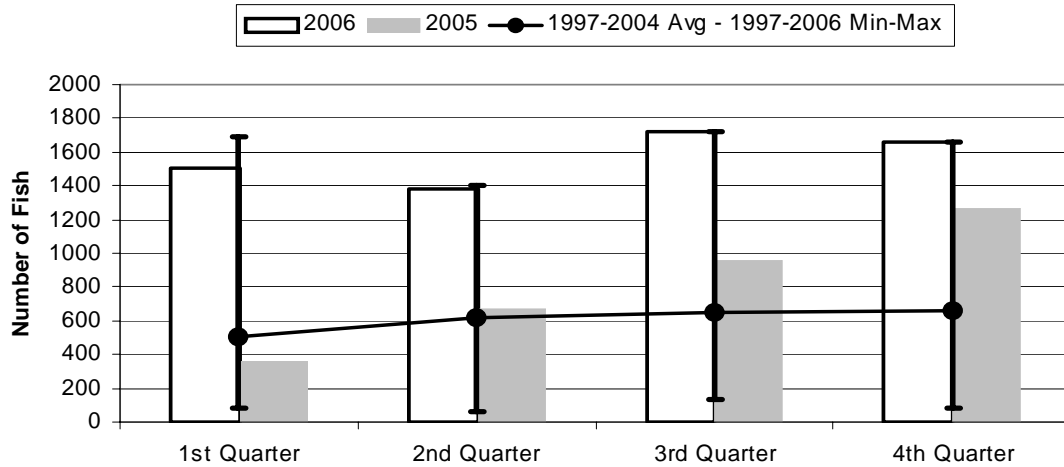
	1st Quarter	2nd Quarter	3rd Quarter	4th Quarter
2006	97	1391	3061	620
2005	409	1154	1813	235
1997-2006 Max	1455	1391	5642	2297
1997-2004 Avg	330	437	1862	769
1997-2006 Min	30	59	280	181

Figure 10. American Samoa Wahoo Catch by Quarter for



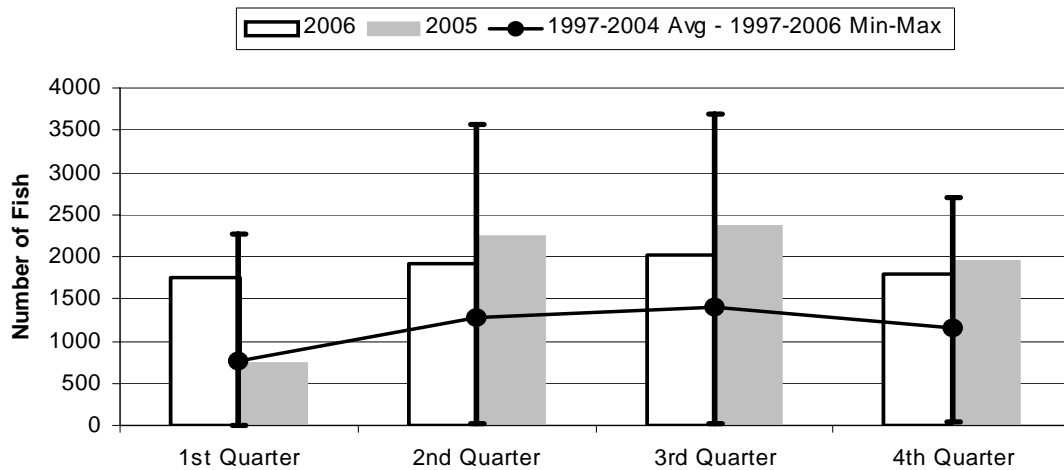
	1st Quarter	2nd Quarter	3rd Quarter	4th Quarter
2006	4367	4076	7325	5476
2005	2153	2007	5348	6267
1997-2006 Max	4367	4076	7629	6267
1997-2004 Avg	1202	1183	2349	2405
1997-2006 Min	27	20	68	209

Figure 11. American Samoa Billfish Catch by Quarter for



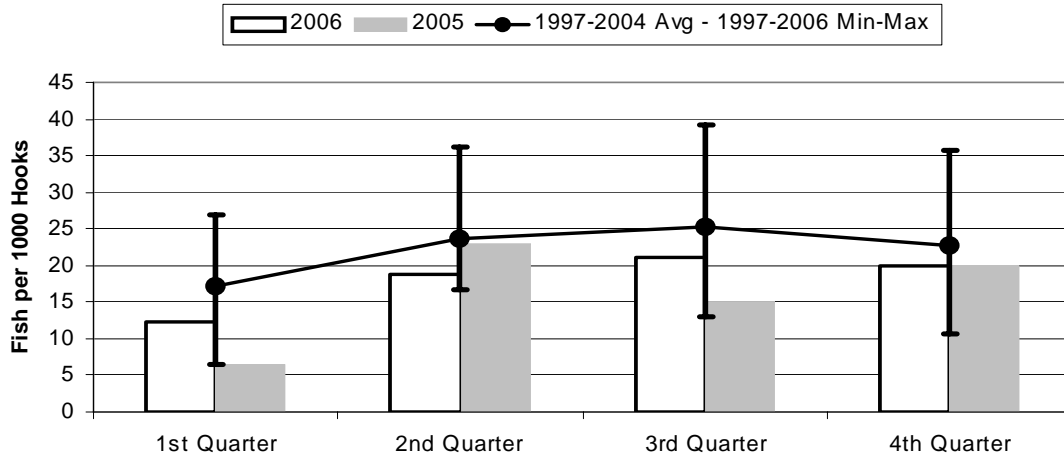
	1st Quarter	2nd Quarter	3rd Quarter	4th Quarter
2006	1507	1385	1726	1664
2005	360	668	958	1268
1997-2006 Max	1692	1404	1726	1664
1997-2004 Avg	509	615	645	655
1997-2006 Min	83	58	132	84

Figure 12. American Samoa Shark Catch by Quarter for



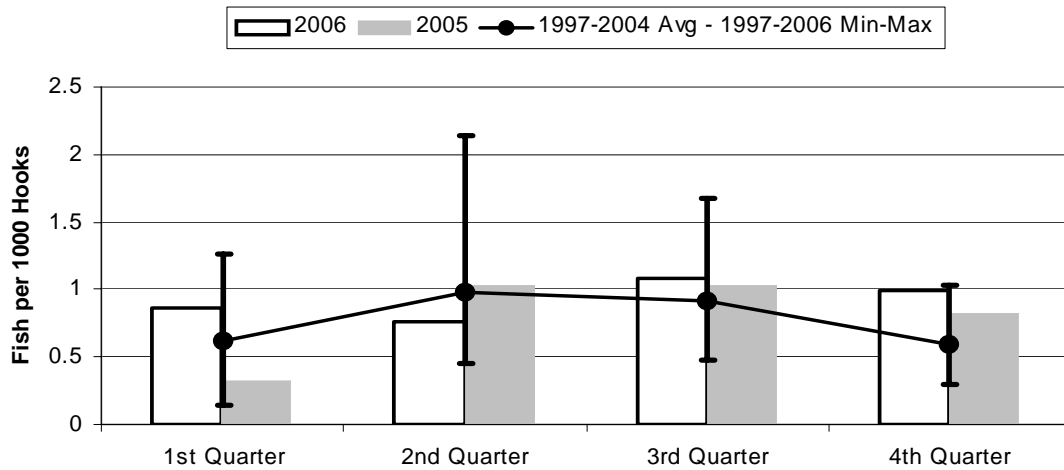
	1st Quarter	2nd Quarter	3rd Quarter	4th Quarter
2006	1757	1909	2012	1790
2005	745	2251	2366	1969
1997-2006 Max	2262	3562	3686	2695
1997-2004 Avg	767	1270	1394	1152
1997-2006 Min	5	16	26	49

Figure 13. American Samoa Longline Albacore Catch/1000 Hooks by Quarter for



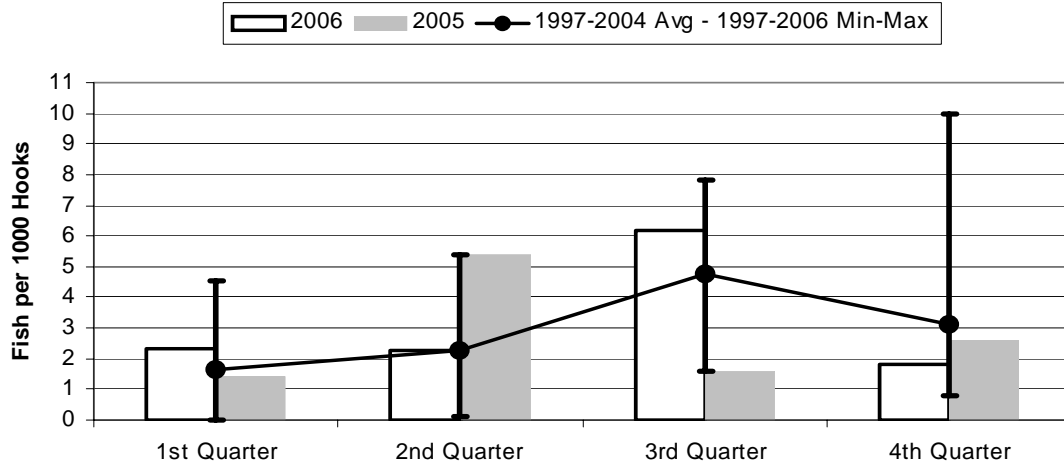
	1st Quarter	2nd Quarter	3rd Quarter	4th Quarter
2006	12.39	18.79	21.14	19.99
2005	6.58	22.88	15.09	20.03
1997-2006 Max	27.01	36.18	39.13	35.75
1997-2004 Avg	17.17	23.62	25.37	22.69
1997-2006 Min	6.58	16.77	12.96	10.56

Figure 14. American Samoa Longline Bigeye Tuna Catch/1000 Hooks by Quarter for



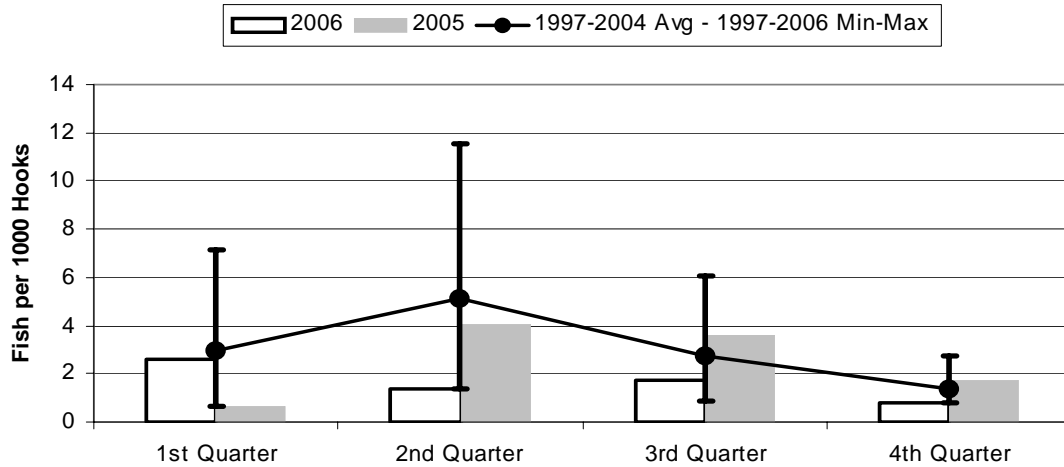
	1st Quarter	2nd Quarter	3rd Quarter	4th Quarter
2006	0.859	0.756	1.077	0.996
2005	0.322	1.037	1.037	0.830
1997-2006 Max	1.267	2.145	1.679	1.030
1997-2004 Avg	0.619	0.982	0.915	0.595
1997-2006 Min	0.146	0.452	0.478	0.296

Figure 15. American Samoa Longline Skipjack Tuna Catch/1000 Hooks by Quarter for



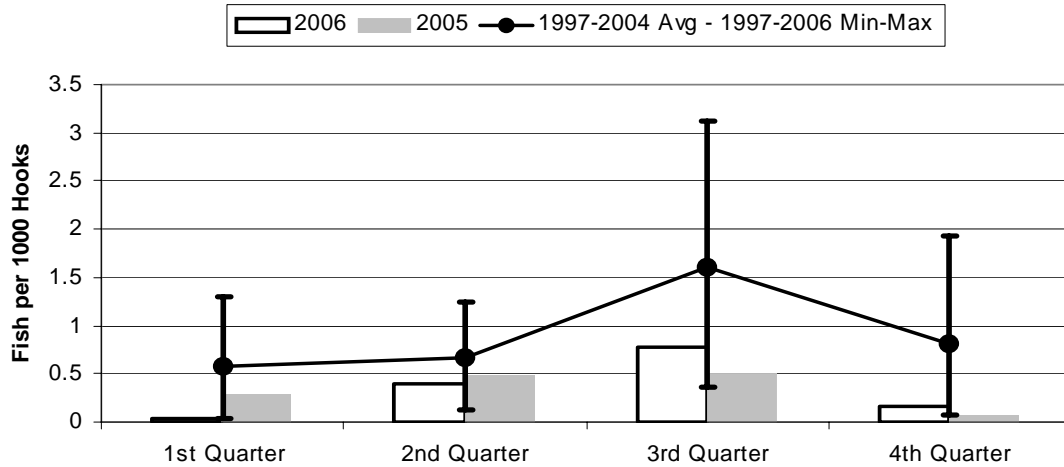
	1st Quarter	2nd Quarter	3rd Quarter	4th Quarter
2006	2.319	2.241	6.197	1.839
2005	1.443	5.388	1.564	2.591
1997-2006 Max	4.556	5.388	7.837	9.975
1997-2004 Avg	1.667	2.247	4.789	3.123
1997-2006 Min	0.000	0.118	1.564	0.785

Figure 16. American Samoa Yellowfin Tuna Catch/1000 Hooks by Quarter for



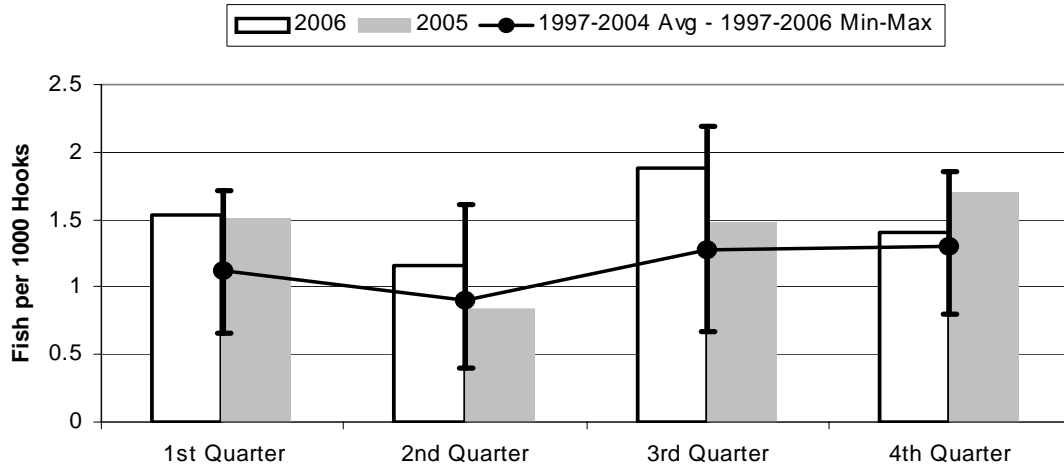
	1st Quarter	2nd Quarter	3rd Quarter	4th Quarter
2006	2.615	1.335	1.752	0.792
2005	0.663	4.034	3.588	1.758
1997-2004 Avg	2.974	5.138	2.709	1.353
1997-2006 Max	7.120	11.51	6.041	2.757
1997-2006 Min	0.663	1.335	0.831	0.792

Figure 17. American Samoa Longline Mahimahi Catch/1000 Hooks by Quarter for



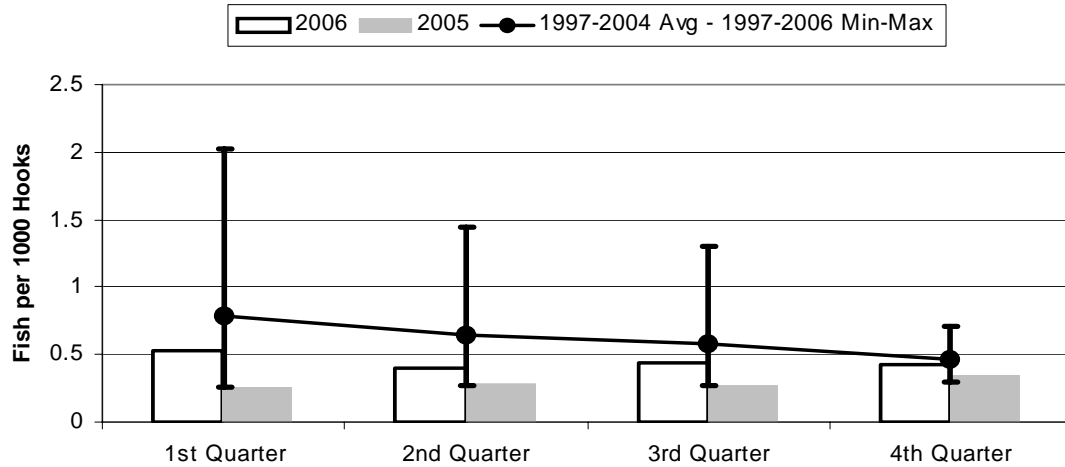
	1st Quarter	2nd Quarter	3rd Quarter	4th Quarter
2006	0.034	0.397	0.784	0.159
2005	0.287	0.481	0.503	0.064
1997-2006 Max	1.304	1.248	3.125	1.932
1997-2004 Avg	0.581	0.669	1.611	0.806
1997-2006 Min	0.034	0.123	0.357	0.064

Figure 18. American Samoa Wahoo Catch/1000 Hooks by Quarter for



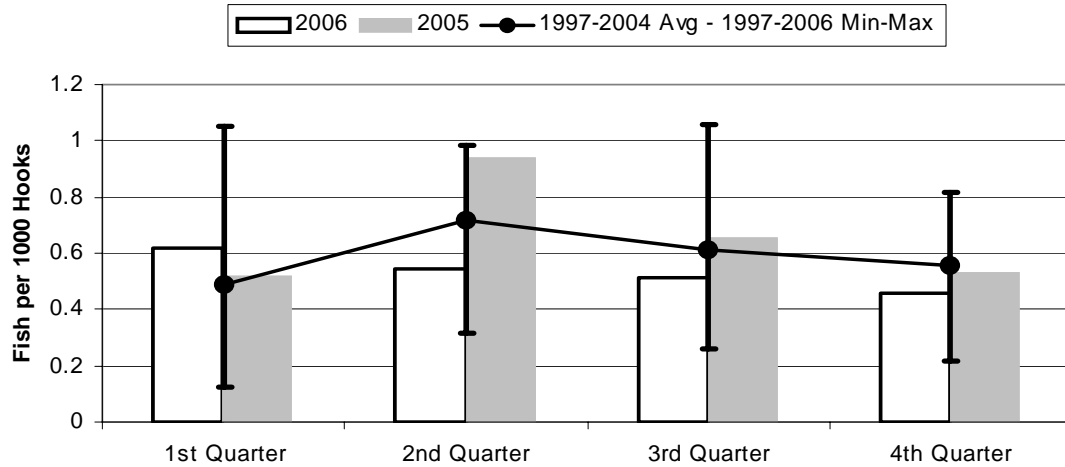
	1st Quarter	2nd Quarter	3rd Quarter	4th Quarter
2006	1.540	1.164	1.876	1.408
2005	1.509	0.836	1.482	1.701
1997-2006 Max	1.710	1.617	2.195	1.861
1997-2004 Avg	1.118	0.903	1.280	1.299
1997-2006 Min	0.657	0.394	0.673	0.803

Figure 19. American Samoa Billfish Catch/1000 Hooks by Quarter for



	1st Quarter	2nd Quarter	3rd Quarter	4th Quarter
2006	0.531	0.395	0.442	0.428
2005	0.252	0.278	0.265	0.344
1997-2006 Max	2.019	1.439	1.306	0.712
1997-2004 Avg	0.783	0.649	0.585	0.465
1997-2006 Min	0.252	0.268	0.265	0.302

Figure 20. American Samoa Shark Catch/1000 Hooks by Quarter for



	1st Quarter	2nd Quarter	3rd Quarter	4th Quarter
2006	0.619	0.545	0.515	0.460
2005	0.522	0.938	0.656	0.534
1997-2006 Max	1.051	0.986	1.061	0.819
1997-2004 Avg	0.491	0.716	0.610	0.556
1997-2006 Min	0.122	0.315	0.257	0.216