

American Samoa Longline Fishery Logbook Summary Report October-December 2005

May 15, 2006

The Federal longline logbook data in this report were compiled by the Pacific Islands Fisheries Science Center with significant support from American Samoa's Department of Marine and Wildlife Resources (DMWR). The data are summarized by date of haul as shown in the following table. All submitted logbook data for longline activities during the fourth quarter of 2005 have been processed and are reported in this preliminary report. As of May 15, 2006, the documented delinquency rate according to the DMWR Daily Effort Census and Delinquency Reporting System for the fourth quarter of 2005 was 2.00%. The summary data in this report are considered preliminary and subject to change as additional delinquent data are received and processed.

According to the Daily Effort Census, 27 vessels were engaged in longline fishing during the fourth quarter of 2005 and 25 of these vessels turned in some or all of their longline logs for sets made during the quarter. These 25 vessels made 1,326 sets and deployed 3,685,214 hooks. Compared to the fourth quarter of last year, fewer vessels were active this year, but deployed more hooks and reported a bigger catch. The number of vessels participating decreased by 21%, the number of sets was almost the same, and the number of hooks deployed increased by 16% compared to the fourth quarter of 2004. The average number of hooks per set increased slightly from 2,664 to 2,779, reflecting the continuing trend of smaller American Samoa longline vessels (the *alia* fleet) to not try to compete with the larger longline vessels and with a trend toward larger longline vessels setting more hooks.

The total catch for all species was 104,309 fish, up by 76% compared to the fourth quarter of last year. Albacore continued to dominate the catch with 73,804 fish caught in the fourth quarter of 2005. This is 2.2 times the 33,570 albacore caught in the fourth quarter of last year and almost 8 times the albacore catch during the first quarter of 2005, which was a very poor quarter for longline fishing in American Samoa. Catches of other species also increased compared to the fourth quarter of last year, except for the catch of mahimahi, which decreased by 69% and the catch of sharks, which was almost the same. Catch increases were recorded for yellowfin tuna (72% increase), bigeye tuna (35%), skipjack tuna (34%), billfish (32%) and wahoo (5%). These results were opposite those of the third quarter of 2005, when catches of mahimahi increased and catches of other species decreased compared with the same quarter in 2004.

Compared with CPUE values in the fourth quarter of 2004, the CPUE for most species rose or fell in parallel with corresponding catch levels. The exceptions were wahoo and sharks, whose CPUE decreased by 8% and 16%, respectively. Increases in CPUE were observed for yellowfin tuna (48% increase), skipjack (16%), bigeye tuna (16%), and billfish (14%). The CPUE of mahimahi decreased by 72%.

Western Pacific Logbook Summary Report for 4th Quarter 2005

Vessels landing or based in American Samoa
Based on Date of Haul for all areas

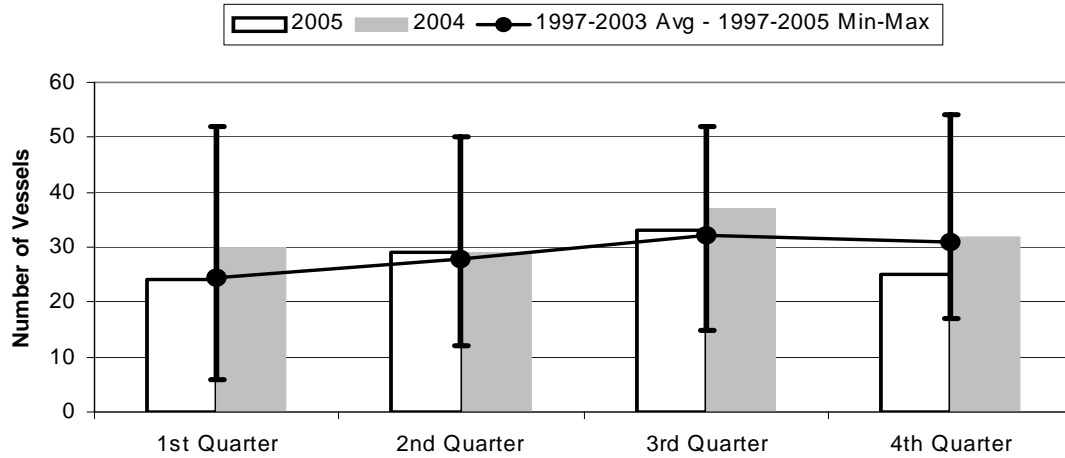
TRIP INFORMATION

Number of Vessels:	25
Number of Sets:	1326
1000's of Hooks Set:	3685
Number of Lightsticks Used:	750

CATCH INFORMATION

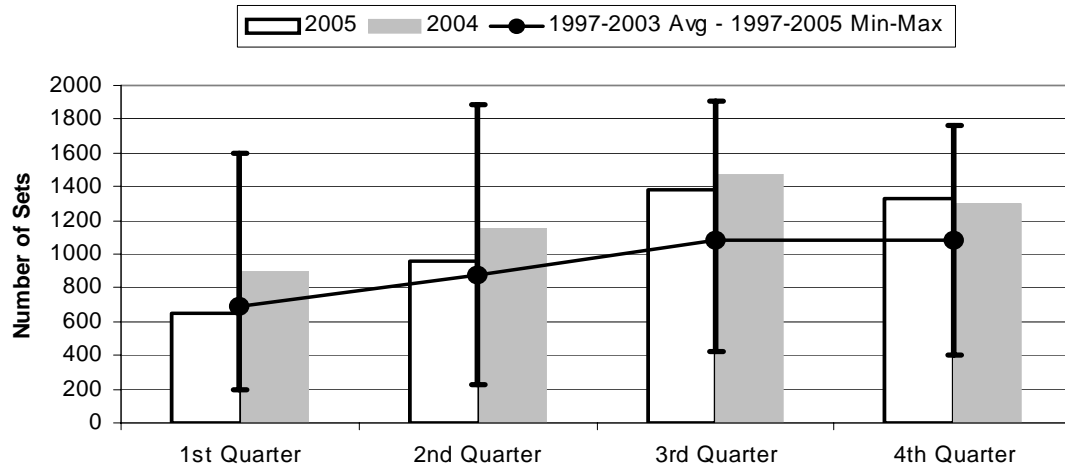
Species	# Caught	# Kept	# Finned	# Caught/ 1000 Hooks
BILLFISH				
Black marlin	3	0		0.00
Blue marlin	733	198		0.20
Striped Marlin	83	30		0.02
Sailfish	146	9		0.04
Spearfish	212	14		0.06
Swordfish	91	63		0.02
TOTALS	1268	314		0.34
SHARKS				
Blue shark	1275	3		0.35
Shortfin Mako Shark	54	2		0.01
Thresher Shark	114	1		0.03
White Tip Oceanic Shark	449	2		0.12
Other Pelagic Sharks	77	0		0.02
TOTALS	1969	8		0.53
TUNA				
Albacore	73804	73789		20.03
Bigeye Tuna	3060	2972		0.83
Bluefin Tuna	3	1		0.00
Skipjack Tuna	9547	7968		2.59
Yellowfin Tuna	6480	6448		1.76
TOTALS	92894	91178		25.21
OTHER PELAGICS				
Mahimahi	235	209		0.06
Moonfish	254	93		0.07
Oilfish	1248	24		0.34
Pomfret	174	42		0.05
Wahoo	6267	6205		1.70
TOTALS	8178	6573		2.22

Figure 1. American Samoa Longline Vessels Submitting Logs by Quarter



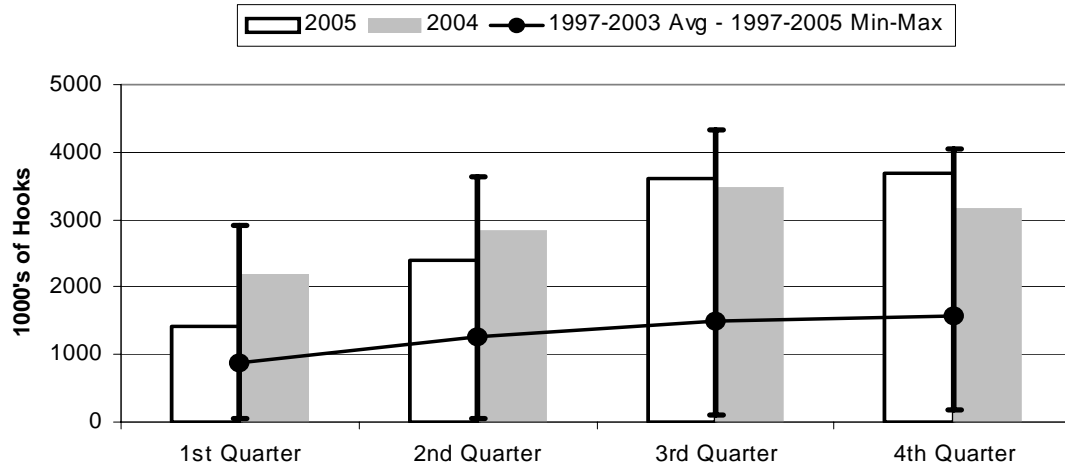
	1st Quarter	2nd Quarter	3rd Quarter	4th Quarter
2005	24	29	33	25
2004	30	29	37	32
1997-2005 Max	52	50	52	54
1997-2003 Avg	24.3	27.7	32.3	30.9
1997-2005 Min	6	12	15	17

Figure 2. Number of Sets by American Samoa Longline Vessels by Quarter



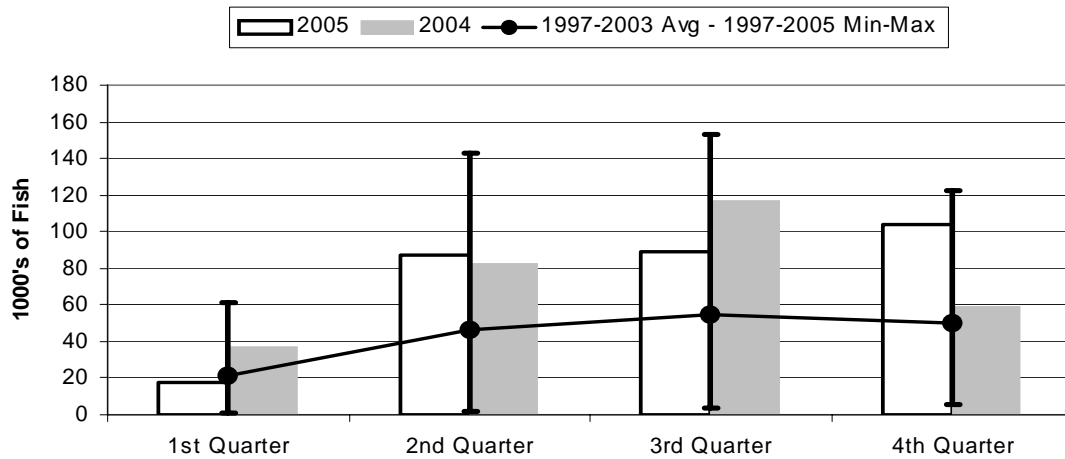
	1st Quarter	2nd Quarter	3rd Quarter	4th Quarter
2005	654	956	1383	1326
2004	894	1158	1474	1304
1997-2005 Max	1602	1886	1903	1758
1997-2003 Avg	689	878	1081	1083
1997-2005 Min	192	223	424	402

Figure 3. Number of Hooks Set by the American Samoa Longline Fleet by Quarter



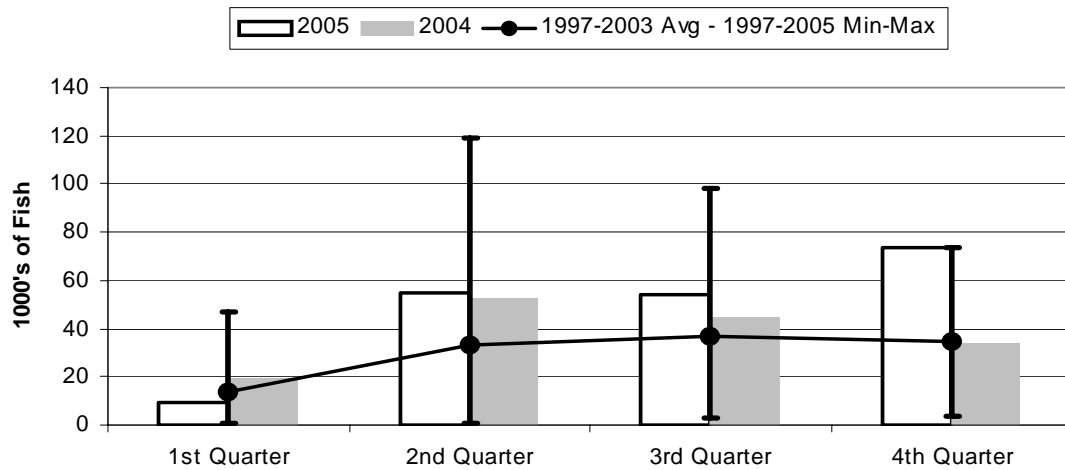
	1st Quarter	2nd Quarter	3rd Quarter	4th Quarter
2005	1429	2400	3605	3685
2004	2195	2837	3475	3179
1997-2005 Max	2902	3629	4338	4044
1997-2003 Avg	880	1266	1504	1564
1997-2005 Min	41	51	101	175

Figure 4. American Samoa Longline Total Catch (All Species) by Quarter



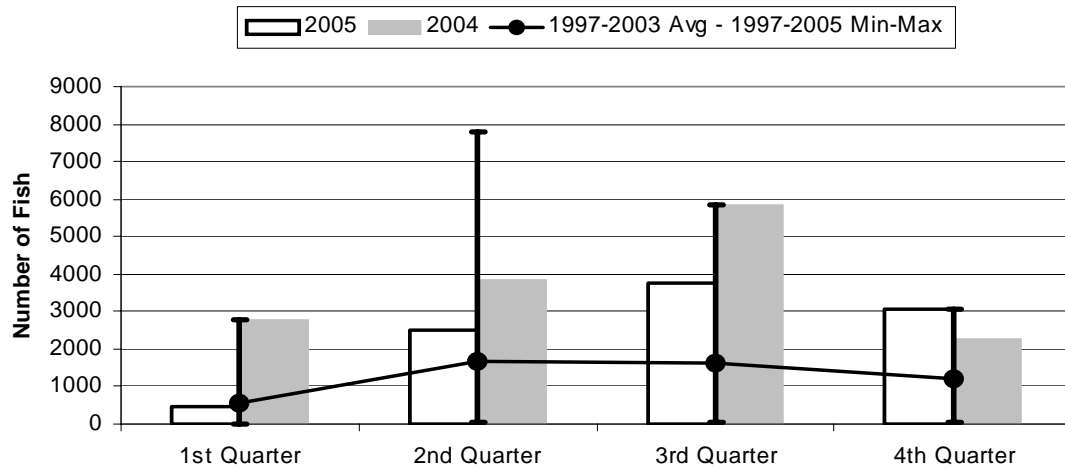
	1st Quarter	2nd Quarter	3rd Quarter	4th Quarter
2005	17.21	87.16	88.71	104.31
2004	36.74	82.81	116.57	59.32
1997-2005 Max	61.24	142.60	153.30	122.34
1997-2003 Avg	20.95	46.27	54.29	50.09
1997-2005 Min	1.32	1.42	4.13	5.20

Figure 5. American Samoa Longline Albacore Catch by Quarter



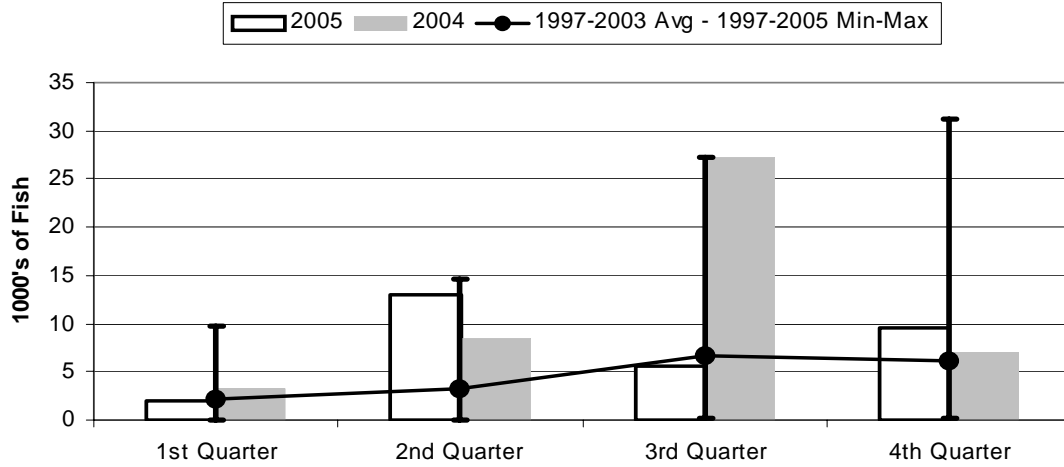
	1st Quarter	2nd Quarter	3rd Quarter	4th Quarter
2005	9.42	54.90	54.46	73.80
2004	19.17	52.89	45.03	33.57
1997-2005 Max	46.98	118.99	98.09	73.80
1997-2003 Avg	13.73	33.51	36.91	34.98
1997-2005 Min	0.94	0.85	3.18	3.47

Figure 6. American Samoa Longline Bigeye Tuna Catch by Quarter



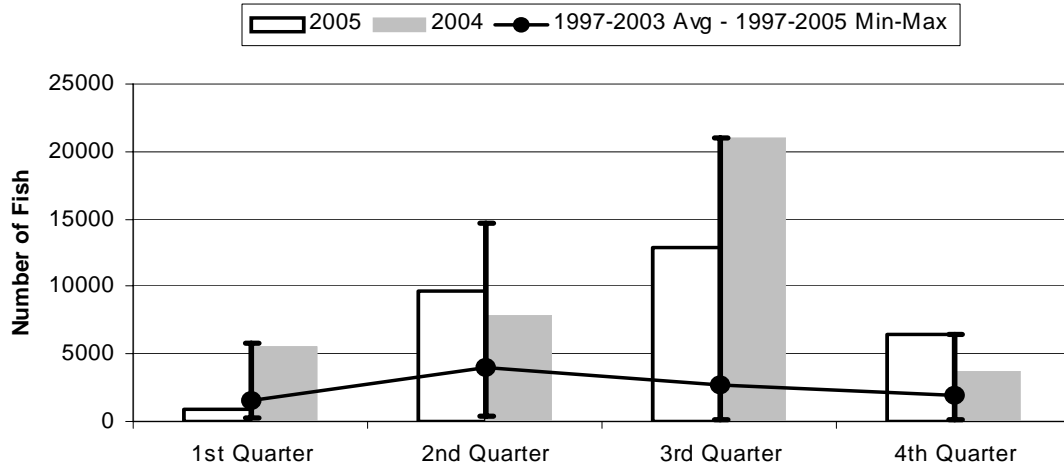
	1st Quarter	2nd Quarter	3rd Quarter	4th Quarter
2005	461	2489	3742	3060
2004	2781	3833	5834	2273
1997-2005 Max	2781	7785	5834	3060
1997-2003 Avg	541	1692	1609	1186
1997-2005 Min	6	26	55	55

Figure 7. American Samoa Longline Skipjack Tuna Catch by Quarter



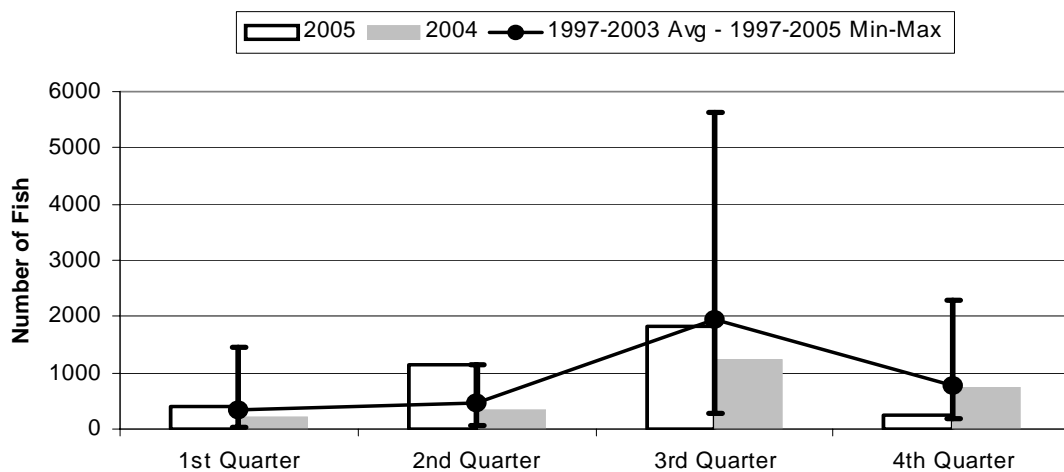
	1st Quarter	2nd Quarter	3rd Quarter	4th Quarter
2005	2.06	12.93	5.64	9.55
2004	3.16	8.40	27.23	7.11
1997-2005 Max	9.81	14.61	27.23	31.19
1997-2003 Avg	2.08	3.28	6.76	6.20
1997-2005 Min	0.00	0.01	0.24	0.18

Figure 8. American Samoa Longline Yellowfin Tuna Catch by Quarter



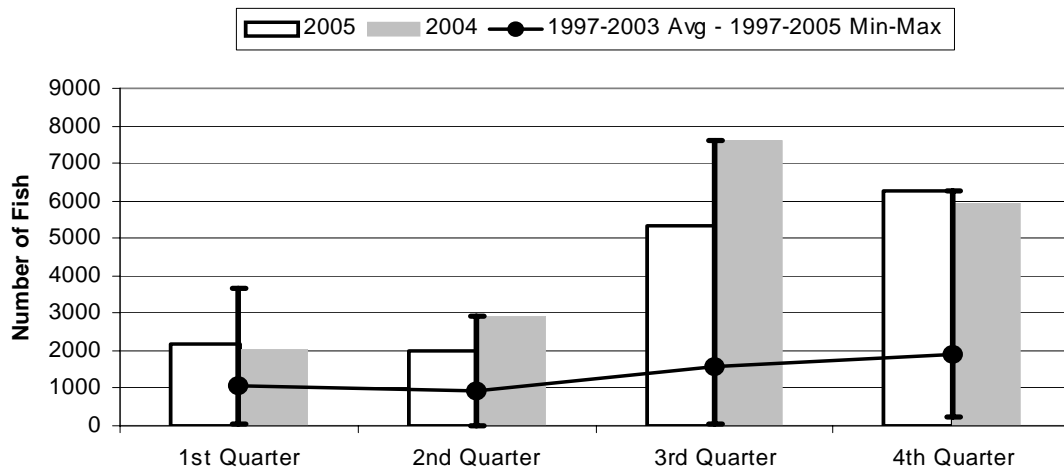
	1st Quarter	2nd Quarter	3rd Quarter	4th Quarter
2005	951	9680	12944	6480
2004	5491	7812	20993	3771
1997-2005 Max	5848	14681	20993	6480
1997-2003 Avg	1602	4010	2732	1950
1997-2005 Min	213	356	84	177

Figure 9. American Samoa Mahimahi Catch by Quarter



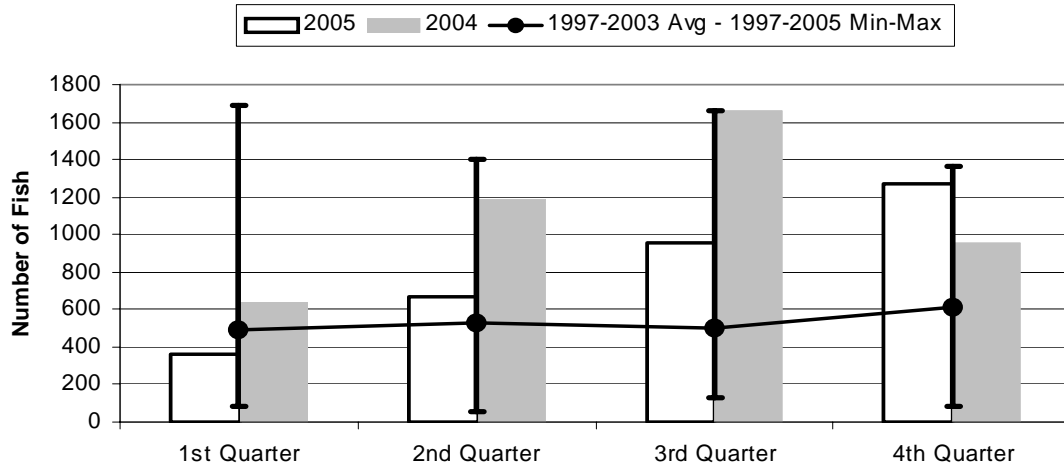
	1st Quarter	2nd Quarter	3rd Quarter	4th Quarter
2005	409	1154	1813	235
2004	214	348	1240	751
1997-2005 Max	1455	1154	5642	2297
1997-2003 Avg	346	450	1951	772
1997-2005 Min	30	59	280	181

Figure 10. American Samoa Wahoo Catch by Quarter



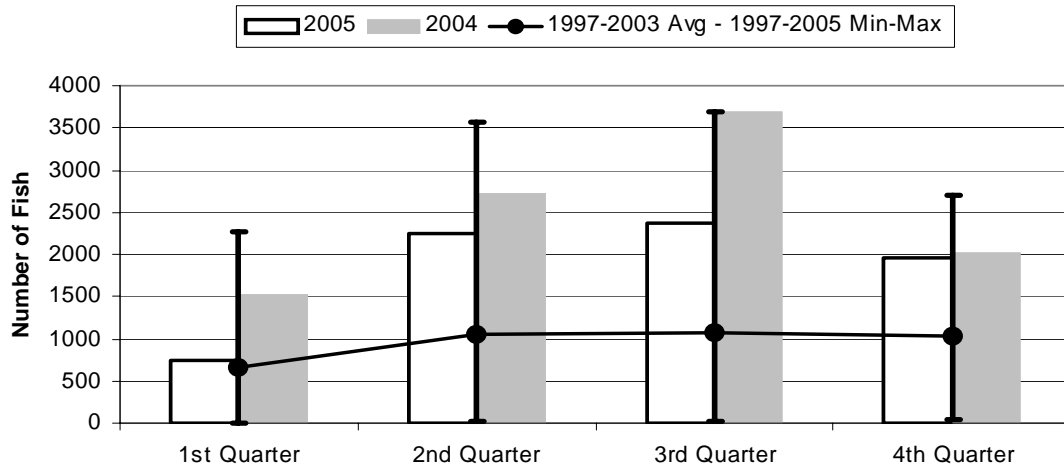
	1st Quarter	2nd Quarter	3rd Quarter	4th Quarter
2005	2158	2007	5341	6267
2004	2024	2921	7629	5918
1997-2005 Max	3681	2921	7629	6267
1997-2003 Avg	1084	935	1594	1903
1997-2005 Min	27	20	68	209

Figure 11. American Samoa Billfish Catch by Quarter



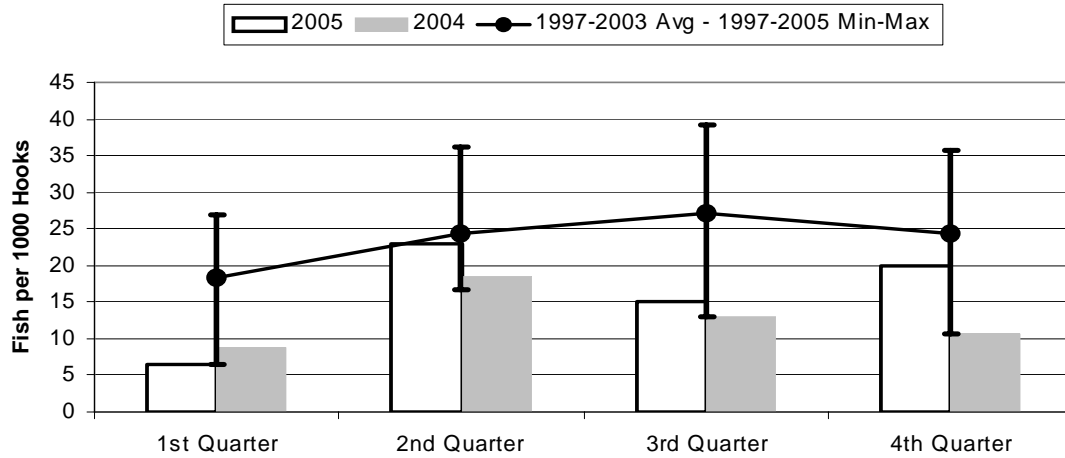
	1st Quarter	2nd Quarter	3rd Quarter	4th Quarter
2005	360	668	958	1268
2004	636	1186	1663	959
1997-2005 Max	1692	1404	1663	1361
1997-2003 Avg	491	533	500	612
1997-2005 Min	83	58	132	84

Figure 12. American Samoa Shark Catch by Quarter



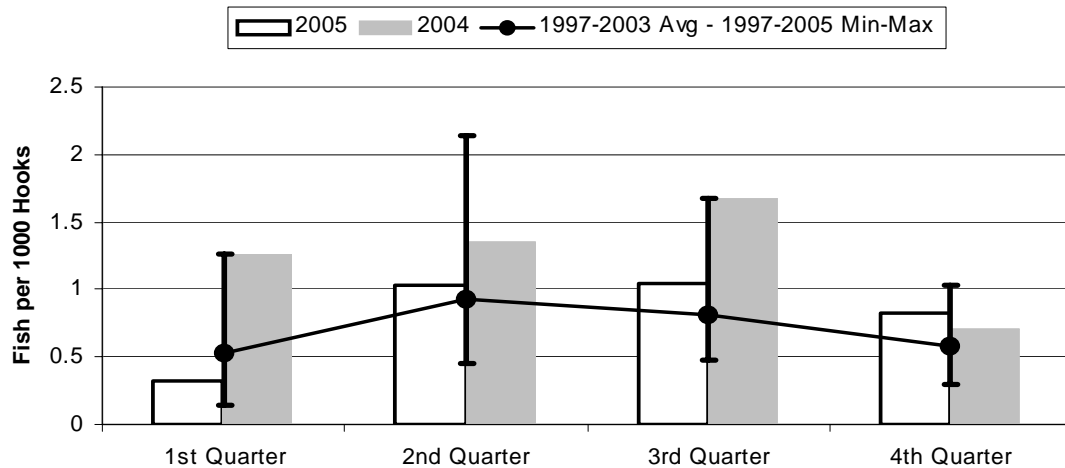
	1st Quarter	2nd Quarter	3rd Quarter	4th Quarter
2005	747	2251	2366	1969
2004	1522	2729	3686	2017
1997-2005 Max	2262	3562	3686	2695
1997-2003 Avg	659	1062	1066	1029
1997-2005 Min	5	16	26	49

Figure 13. American Samoa Longline Albacore Catch/1000 Hooks by Quarter



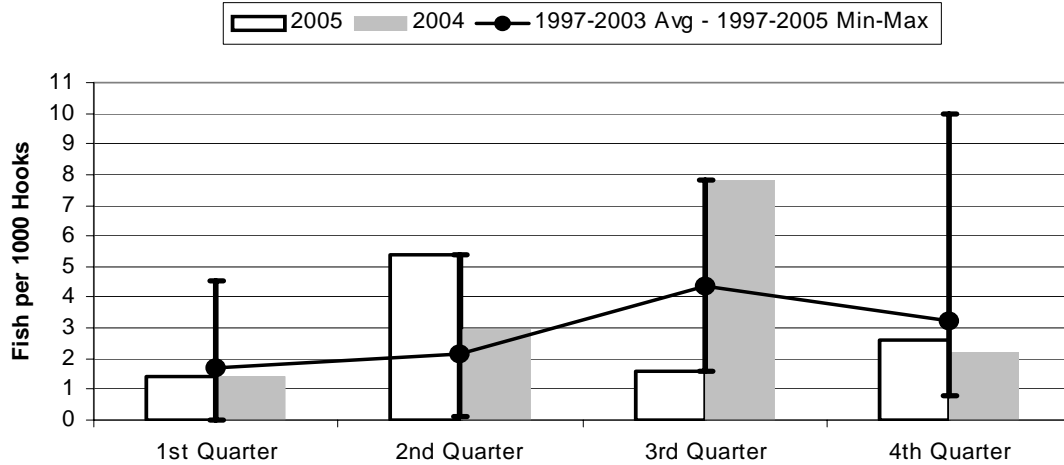
	1st Quarter	2nd Quarter	3rd Quarter	4th Quarter
2005	6.59	22.88	15.10	20.03
2004	8.73	18.64	12.96	10.56
1997-2005 Max	27.01	36.18	39.13	35.75
1997-2003 Avg	18.38	24.34	27.14	24.42
1997-2005 Min	6.59	16.77	12.96	10.56

Figure 14. American Samoa Longline Bigeye Tuna Catch/1000 Hooks by Quarter



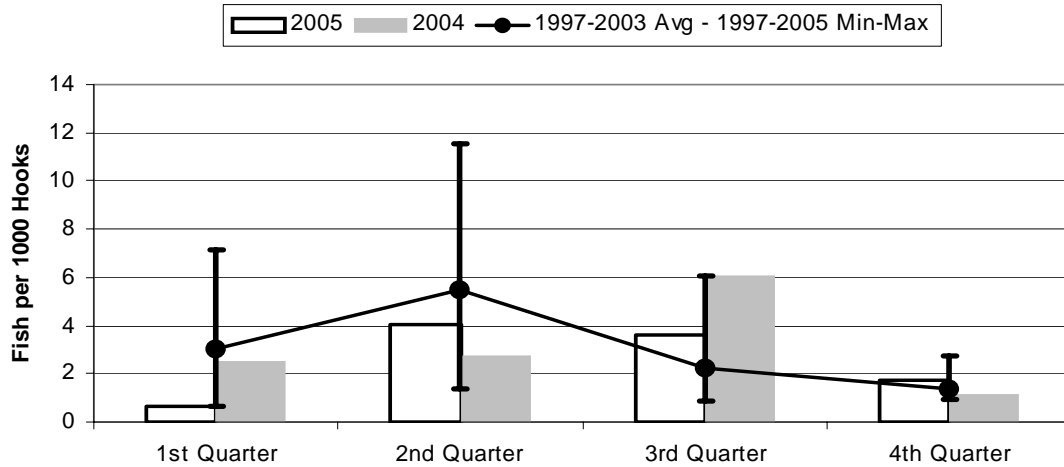
	1st Quarter	2nd Quarter	3rd Quarter	4th Quarter
2005	0.323	1.037	1.038	0.830
2004	1.267	1.351	1.679	0.715
1997-2005 Max	1.267	2.145	1.679	1.030
1997-2003 Avg	0.527	0.929	0.805	0.578
1997-2005 Min	0.146	0.452	0.478	0.296

Figure 15. American Samoa Longline Skipjack Tuna Catch/1000 Hooks by Quarter



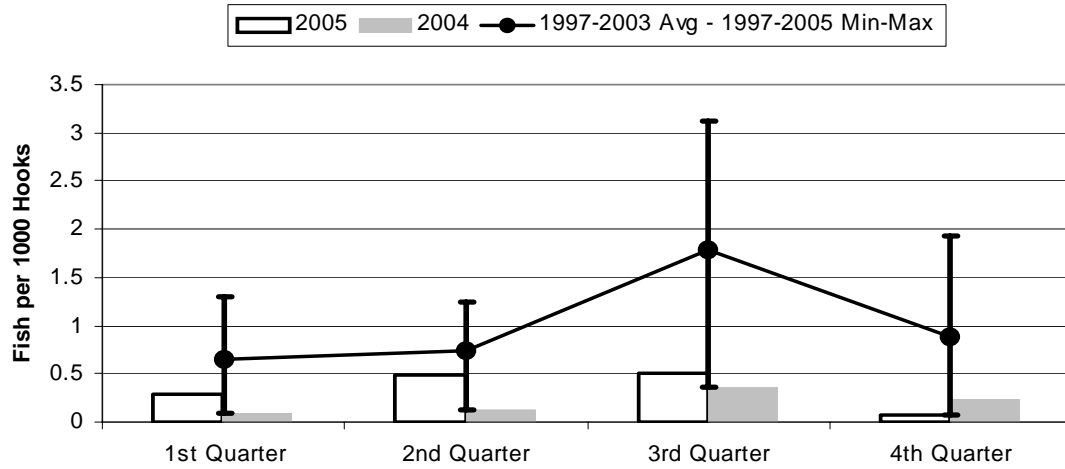
	1st Quarter	2nd Quarter	3rd Quarter	4th Quarter
2005	1.444	5.388	1.565	2.591
2004	1.440	2.960	7.838	2.237
1997-2005 Max	4.556	5.388	7.838	9.975
1997-2003 Avg	1.700	2.145	4.353	3.249
1997-2005 Min	0.000	0.118	1.565	0.785

Figure 16. American Samoa Yellowfin Tuna Catch/1000 Hooks by Quarter



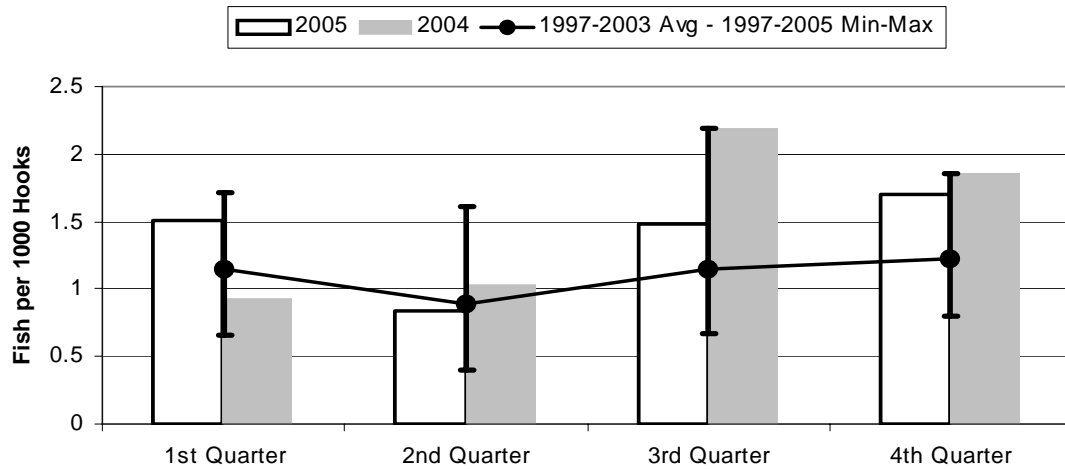
	1st Quarter	2nd Quarter	3rd Quarter	4th Quarter
2005	0.665	4.034	3.590	1.758
2004	2.502	2.754	6.042	1.186
1997-2005 Max	7.120	11.51	6.042	2.757
1997-2003 Avg	3.041	5.479	2.233	1.377
1997-2005 Min	0.665	1.395	0.831	0.968

Figure 17. American Samoa Longline Mahimahi Catch/1000 Hooks by Quarter



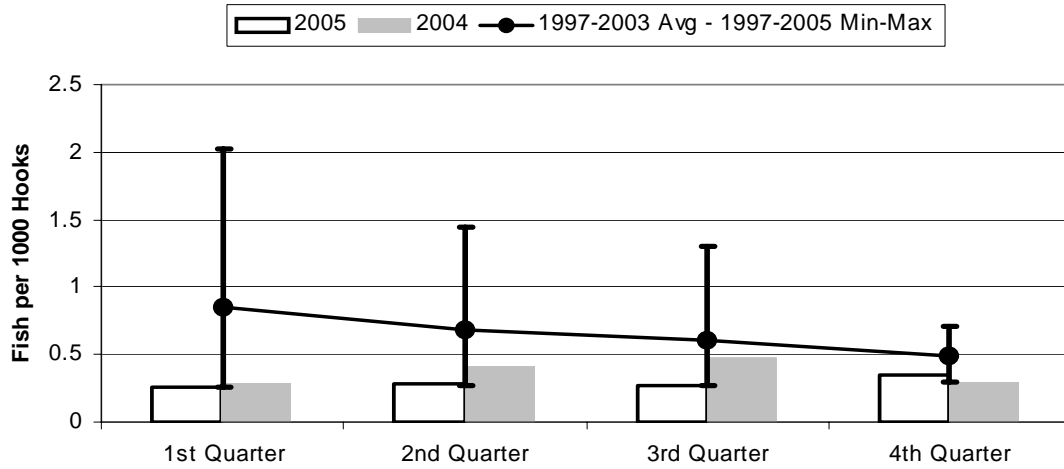
	1st Quarter	2nd Quarter	3rd Quarter	4th Quarter
2005	0.286	0.481	0.503	0.064
2004	0.098	0.123	0.357	0.236
1997-2005 Max	1.304	1.248	3.125	1.932
1997-2003 Avg	0.650	0.748	1.790	0.887
1997-2005 Min	0.091	0.123	0.357	0.064

Figure 18. American Samoa Wahoo Catch/1000 Hooks by Quarter



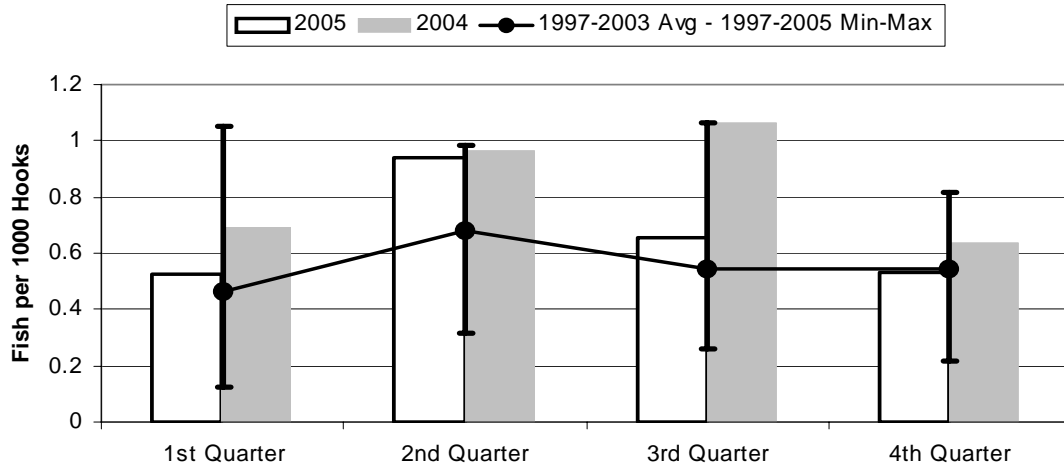
	1st Quarter	2nd Quarter	3rd Quarter	4th Quarter
2005	1.510	0.836	1.481	1.701
2004	0.922	1.030	2.196	1.861
1997-2005 Max	1.710	1.617	2.196	1.861
1997-2003 Avg	1.146	0.885	1.149	1.218
1997-2005 Min	0.657	0.394	0.673	0.803

Figure 19. American Samoa Billfish Catch/1000 Hooks by Quarter



	1st Quarter	2nd Quarter	3rd Quarter	4th Quarter
2005	0.252	0.278	0.266	0.344
2004	0.290	0.418	0.479	0.302
1997-2005 Max	2.019	1.439	1.306	0.712
1997-2003 Avg	0.854	0.682	0.600	0.488
1997-2005 Min	0.252	0.268	0.266	0.302

Figure 20. American Samoa Shark Catch/1000 Hooks by Quarter



	1st Quarter	2nd Quarter	3rd Quarter	4th Quarter
2005	0.523	0.938	0.656	0.534
2004	0.694	0.962	1.061	0.635
1997-2005 Max	1.051	0.986	1.061	0.819
1997-2003 Avg	0.462	0.681	0.546	0.545
1997-2005 Min	0.122	0.315	0.257	0.216