

Department of Marine & Wildlife Resources
Report on the NMFS Logbook Program for the
American Samoa Longline Fishery
July-September 2004

January 4, 2005

The Department of Marine and Wildlife Resources (DMWR) began processing the longline logbook data locally at the beginning of the year 2000 and very significant progress has been made to improve compliance of reporting requirements in the American Samoa longline fishery. Logbook data in this report are summarized by date of haul as shown in the following table. All submitted logbook data for longline activities during the third quarter of 2004 have been processed and are reported in this preliminary report. As of January 4, 2005, the documented delinquency rate according to the DMWR Daily Effort Census and Delinquency Reporting System for the third quarter of 2004 was 11.26%. The summary data in this report are considered preliminary and subject to change as additional delinquent data are received and processed.

According to the Daily Effort Census, 38 vessels were engaged in longline fishing during the third quarter of 2004 and 37 of these vessels turned in some or all of their longline logs for sets made during the quarter (which is 21.3 % less boats than the one year ago value). These 37 vessels made 1,427 sets and set 3,329,222 hooks. Compared to the third quarter of 2003, this is approximately 25 % less than the number of sets made with 1,012,778 less hooks set compare to last year. The average number of hooks per set is almost the same with 2333 hooks per set (3rd quarter 2003 value was 2282 hooks per set).

Albacore continued to dominate the catch with only 43,420 fish caught in the third quarter of 2004. This is a decrease of 21.8 % of the 52,882 albacores caught in the second quarter of 2004, which depict the usual seasonal variation of albacore catches, but a decrease of 34.3% of the albacores caught during the third quarter of 2003 (66,696 fish). The total catch of all species increased by 11.7%.

Catches of skipjack tuna has increased by 141.5%, Yellowfin tuna increased by 321.8% while big eye increased by 46.4%. The wahoo catches increased by 72.4%, while bill fish catch increased by 29% and shark catch increased by 15 %. The mahi-mahi catches decreased by 61.3%. As the number of hooks set has dropped by 23.3%, variations of CPUE moderate the effects of the negative catches variations and accentuate the positive catches variations.

Overall CPUE increase by 45.7% compare to third quarter 2003.

Albacore CPUE decreased by 43% of its previous quarter value and decreased by 14.3% of its a year ago value to 13.04 fish per 1000 hooks in the third quarter of 2004. The CPUE for all other species of tuna increased dramatically over their year ago values. The CPUE for skipjack increased by 214.9% from the quarter a year ago, yellowfin increased by 450.1% and Big eye by 90.9 % (but the catch rate for this fish

has varied erratically during at least the last 7 quarters). It is the sixth quarter in a row that the catch rate for Mahi-mahi decrease compare to their one year ago values. This quarter, the value decreased by 49.5% to 0.36 Mahi-mahi per 1000 hooks. At the opposite the catch rate for Wahoo increased by 124.9 % (to 2.16 fish/1000 hooks), Billfish by 68.2 % (to 0.49 fish/1000 hooks) and sharks by 50% (to 1.09 fish/1000 hooks).

Western Pacific Logbook Summary Report for 3rd Quarter 2004

Vessels landing or based in American Samoa
Based on Date of Haul for all areas

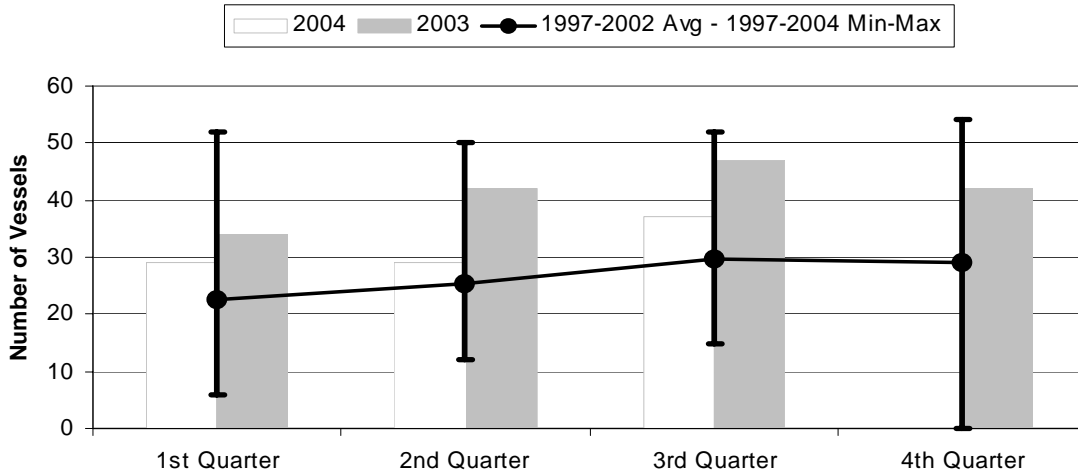
TRIP INFORMATION

Number of Vessels:	37
Number of Sets:	1427
1000's of Hooks Set:	3329
Number of Lightsticks Used:	720

CATCH INFORMATION

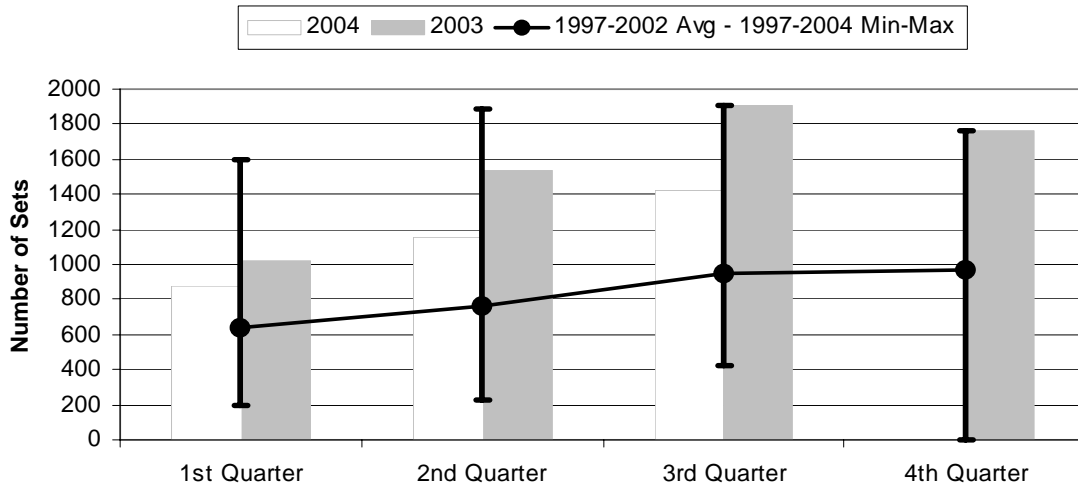
Species	# Caught	# Kept	# Finned	# Caught/ 1000 Hooks
BILLFISH				
Black marlin	1	0		0.00
Blue marlin	484	40		0.15
Striped Marlin	74	15		0.02
Sailfish	403	19		0.12
Spearfish	559	15		0.17
Swordfish	108	60		0.03
TOTALS	1629	149		0.49
SHARKS				
Blue shark	2310	2		0.69
Mako Shark	103	2		0.03
Thresher Shark	149	0		0.04
White-Tip Shark	900	0		0.27
Other Sharks	167	0		0.05
TOTALS	3629	4		1.09
TUNA				
Albacore	43420	43067		13.04
Bigeye Tuna	5640	5361		1.69
Bluefin Tuna	2	1		0.00
Skipjack Tuna	26805	20756		8.05
Yellowfin Tuna	20300	19598		6.10
TOTALS	96167	88783		28.89
OTHER PELAGICS				
Mahimahi	1190	906		0.36
Moonfish	253	28		0.08
Oilfish	2355	18		0.71
Pomfret	408	60		0.12
Wahoo	7193	6293		2.16
TOTALS	11399	7305		3.42
NON-PMUS				
Other Pelagic Fish	225	8		0.07
TOTALS	225	8		0.07

Figure 1. American Samoa Longline Vessels Submitting Logs by Quarter for



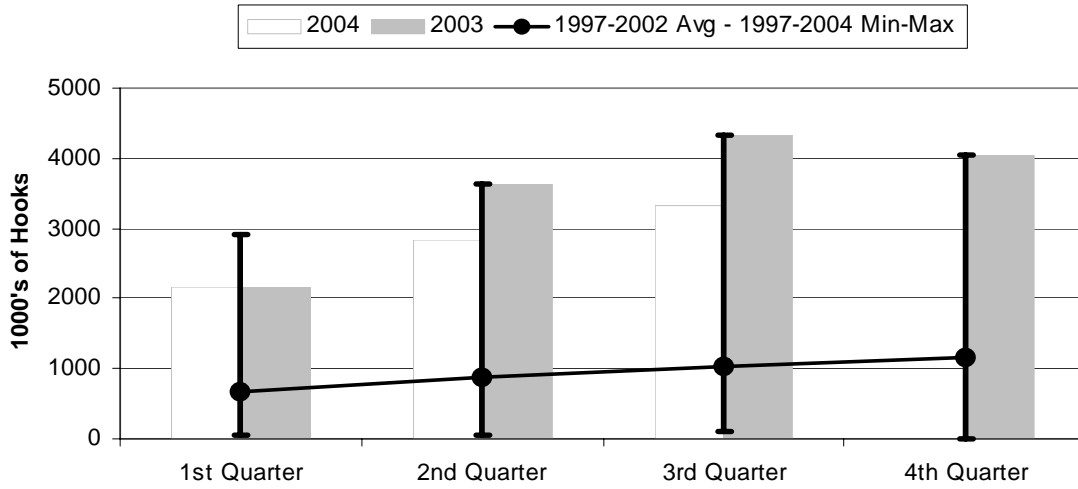
	1st Quarter	2nd Quarter	3rd Quarter	4th Quarter
2004	29	29	37	0
2003	34	42	47	42
1997-2004 Max	52	50	52	54
1997-2002 Avg	22.7	25.3	29.8	29.0
1997-2004 Min	6	12	15	0

Figure 2. Number of Sets by American Samoa Longline Vessels by Quarter for



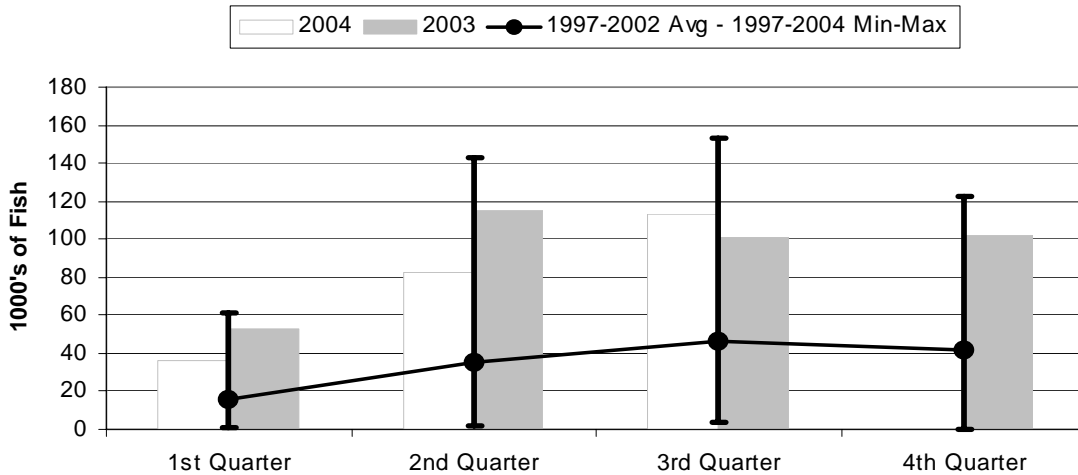
	1st Quarter	2nd Quarter	3rd Quarter	4th Quarter
2004	881	1158	1427	0
2003	1018	1541	1903	1758
1997-2004 Max	1602	1886	1903	1758
1997-2002 Avg	635	767	944	971
1997-2004 Min	192	223	424	0

Figure 3. Number of Hooks Set by the American Samoa Longline Fleet by Quarter for



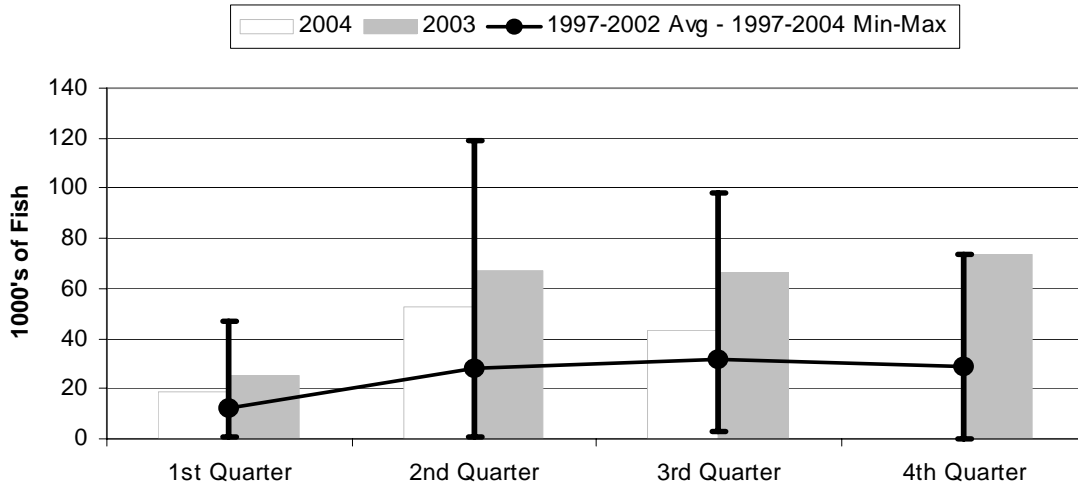
	1st Quarter	2nd Quarter	3rd Quarter	4th Quarter
2004	2159	2837	3329	0
2003	2153	3629	4342	4044
1997-2004 Max	2904	3629	4342	4044
1997-2002 Avg	668	872	1032	1151
1997-2004 Min	41	51	102	0

Figure 4. American Samoa Longline Total Catch (All Species) by Quarter for



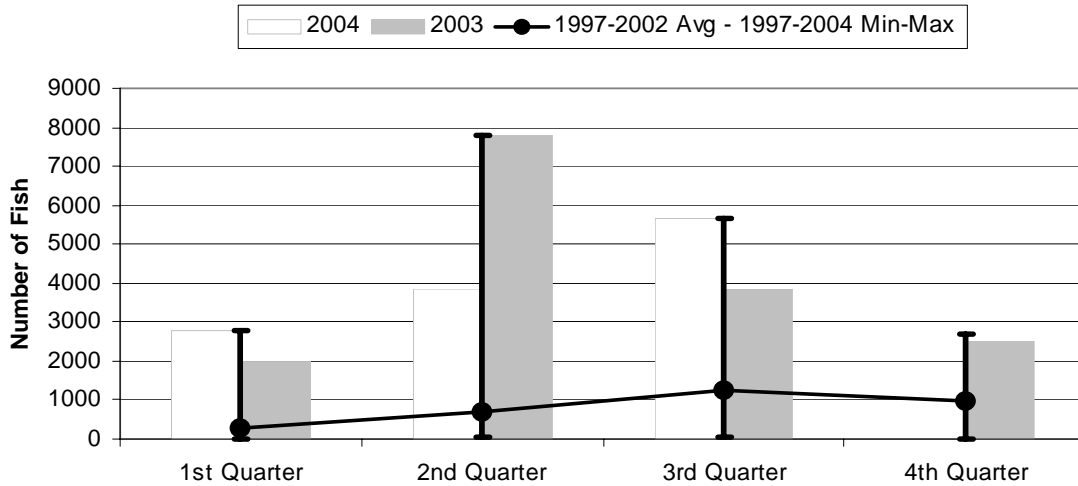
	1st Quarter	2nd Quarter	3rd Quarter	4th Quarter
2004	36.42	82.81	113.05	0.00
2003	52.76	114.75	101.19	101.77
1997-2004 Max	61.24	142.60	153.30	122.34
1997-2002 Avg	15.75	34.86	46.47	41.48
1997-2004 Min	1.32	1.42	4.13	0.00

Figure 5. American Samoa Longline Albacore Catch by Quarter for



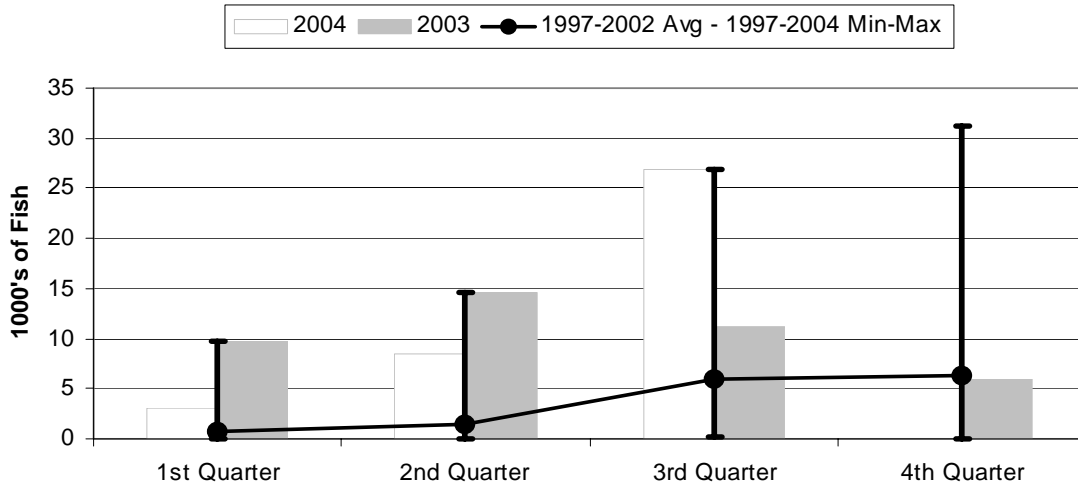
	1st Quarter	2nd Quarter	3rd Quarter	4th Quarter
2004	18.98	52.89	43.42	0.00
2003	25.22	67.35	66.10	73.77
1997-2004 Max	46.98	118.99	98.09	73.77
1997-2002 Avg	11.92	27.88	32.04	28.51
1997-2004 Min	0.94	0.85	3.18	0.00

Figure 6. American Samoa Longline Bigeye Tuna Catch by Quarter for



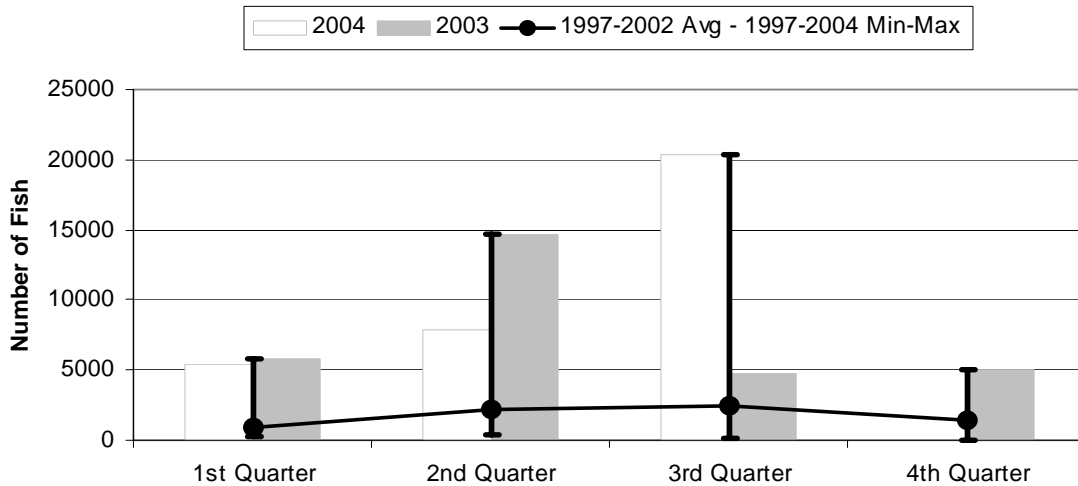
	1st Quarter	2nd Quarter	3rd Quarter	4th Quarter
2004	2770	3833	5640	0
2003	1993	7785	3853	2500
1997-2004 Max	2770	7785	5640	2678
1997-2002 Avg	299	675	1235	967
1997-2004 Min	6	26	55	0

Figure 7. American Samoa Longline Skipjack Tuna Catch by Quarter for



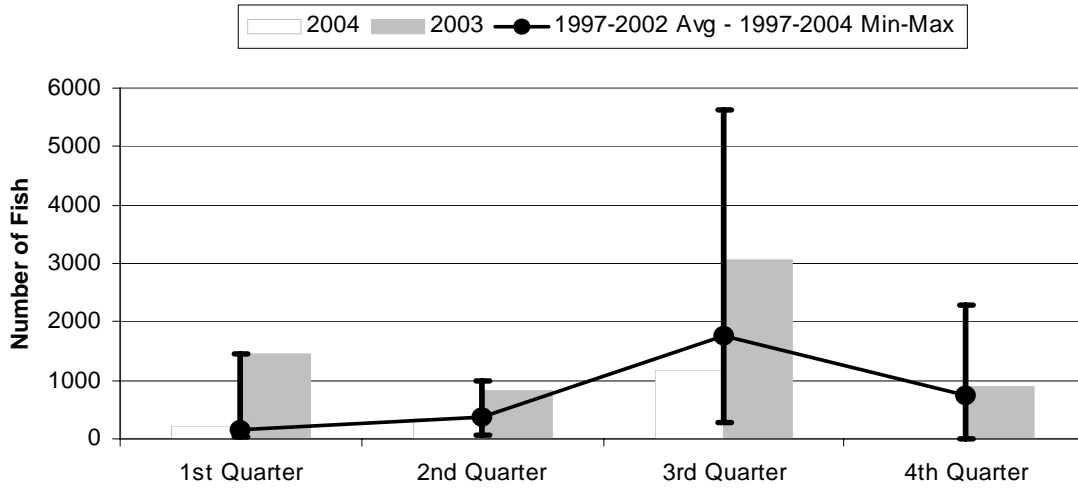
	1st Quarter	2nd Quarter	3rd Quarter	4th Quarter
2004	3.13	8.40	26.81	0.00
2003	9.81	14.61	11.10	6.01
1997-2004 Max	9.81	14.61	26.81	31.19
1997-2002 Avg	0.79	1.40	6.03	6.23
1997-2004 Min	0.00	0.01	0.24	0.00

Figure 8. American Samoa Longline Yellowfin Tuna Catch by Quarter for



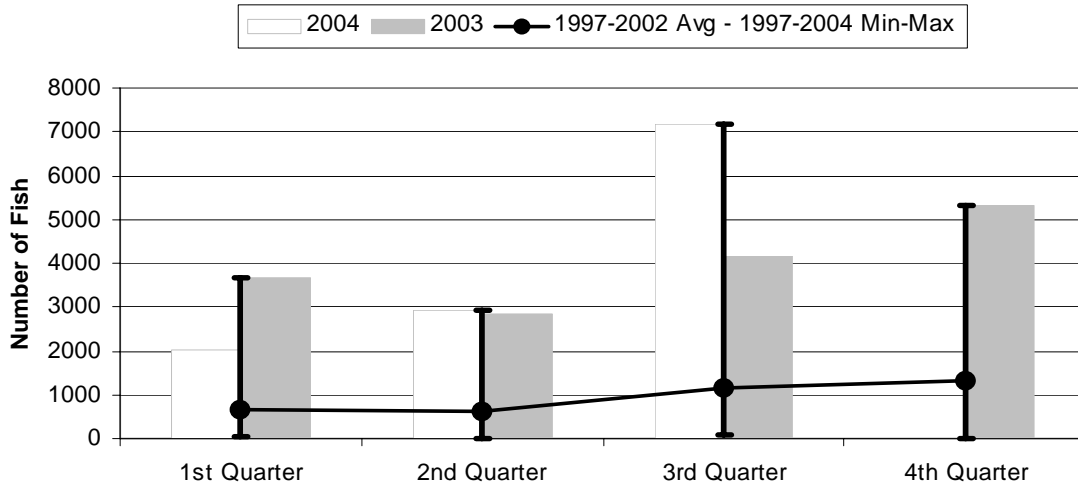
	1st Quarter	2nd Quarter	3rd Quarter	4th Quarter
2004	5471	7812	20300	0
2003	5848	14681	4813	5078
1997-2004 Max	5848	14681	20300	5078
1997-2002 Avg	894	2234	2385	1428
1997-2004 Min	213	356	84	0

Figure 9. American Samoa Mahimahi Catch by Quarter for



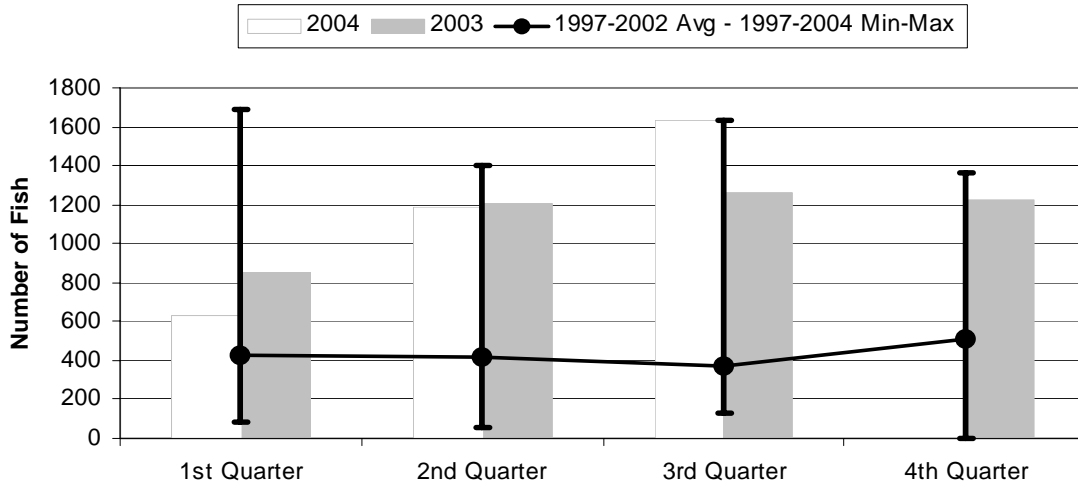
	1st Quarter	2nd Quarter	3rd Quarter	4th Quarter
2004	213	348	1190	0
2003	1455	847	3076	886
1997-2004 Max	1455	979	5642	2297
1997-2002 Avg	161	384	1763	754
1997-2004 Min	30	59	280	0

Figure 10. American Samoa Wahoo Catch by Quarter for



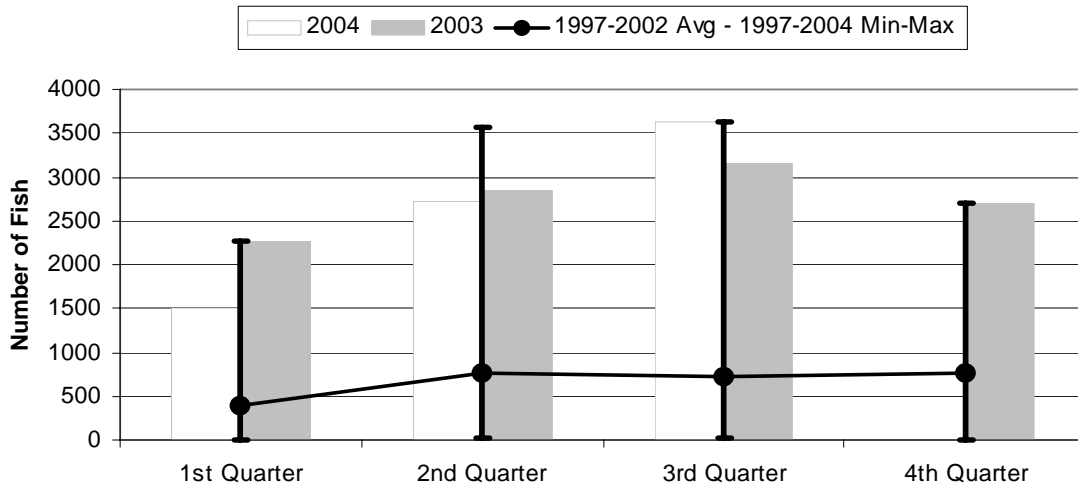
	1st Quarter	2nd Quarter	3rd Quarter	4th Quarter
2004	2008	2921	7193	0
2003	3681	2865	4172	5333
1997-2004 Max	3681	2921	7193	5333
1997-2002 Avg	652	615	1165	1331
1997-2004 Min	27	20	68	0

Figure 11. American Samoa Billfish Catch by Quarter for



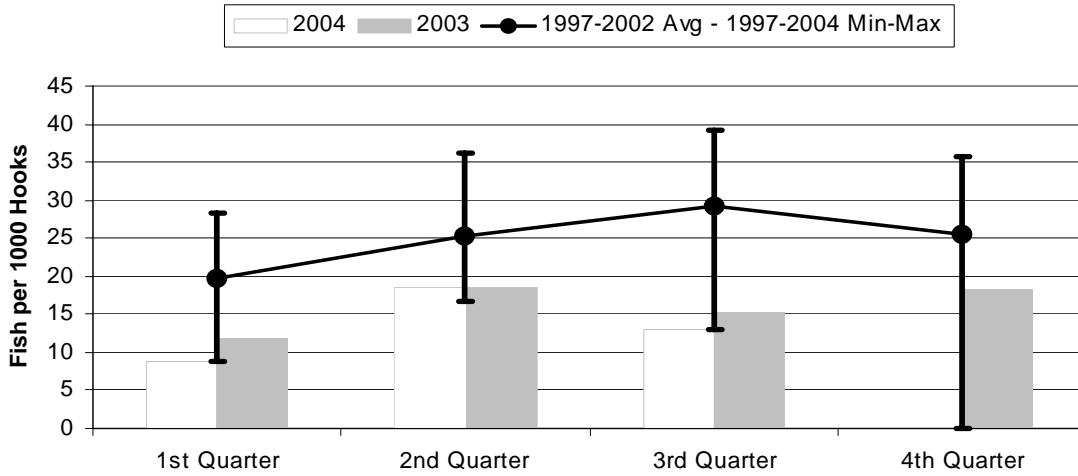
	1st Quarter	2nd Quarter	3rd Quarter	4th Quarter
2004	628	1186	1629	0
2003	852	1207	1263	1221
1997-2004 Max	1692	1404	1629	1361
1997-2002 Avg	431	421	372	510
1997-2004 Min	83	58	132	0

Figure 12. American Samoa Shark Catch by Quarter for



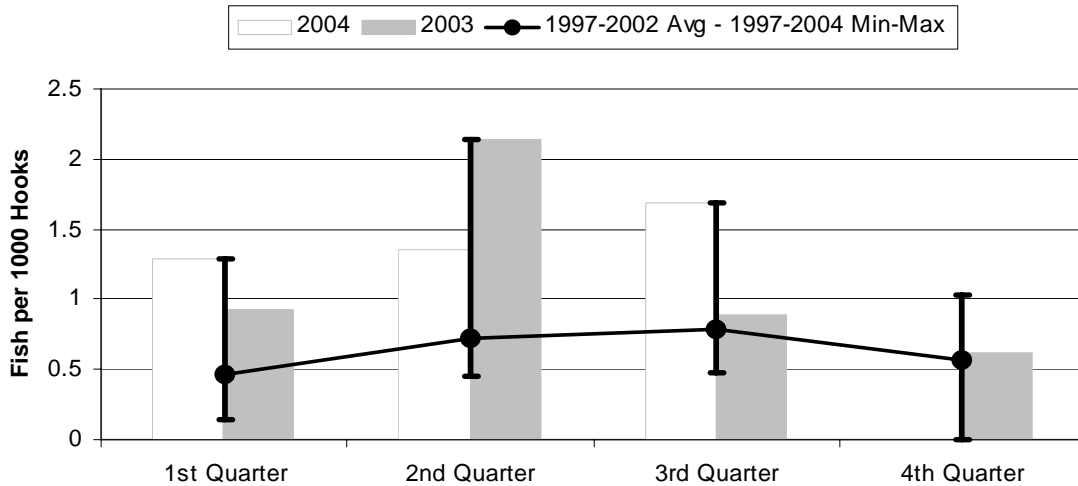
	1st Quarter	2nd Quarter	3rd Quarter	4th Quarter
2004	1500	2729	3629	0
2003	2262	2855	3156	2695
1997-2004 Max	2262	3562	3629	2695
1997-2002 Avg	392	763	718	753
1997-2004 Min	5	16	26	0

Figure 13. American Samoa Longline Albacore Catch/1000 Hooks by Quarter for



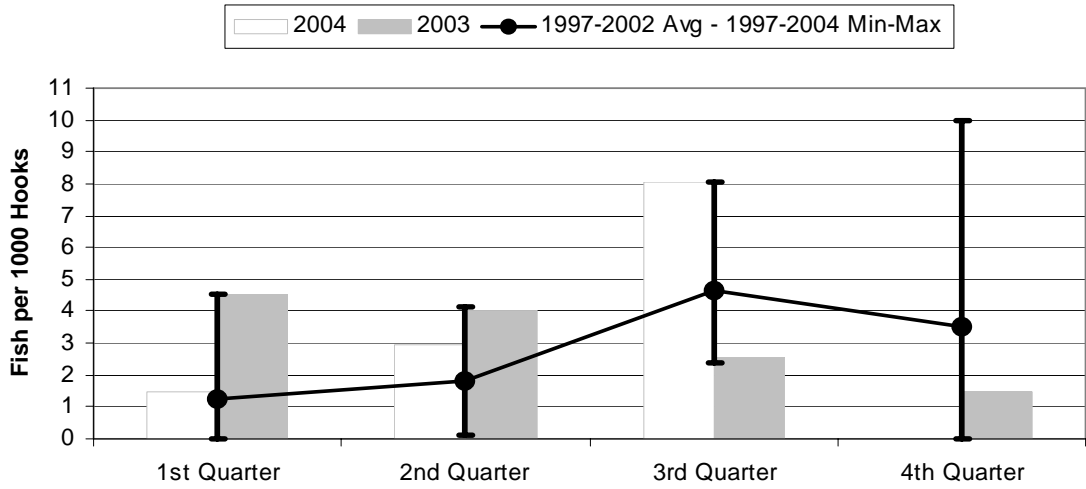
	1st Quarter	2nd Quarter	3rd Quarter	4th Quarter
2004	8.79	18.64	13.04	0.00
2003	11.72	18.56	15.22	18.24
1997-2004 Max	28.33	36.18	39.13	35.68
1997-2002 Avg	19.72	25.30	29.12	25.44
1997-2004 Min	8.79	16.77	13.04	0.00

Figure 14. American Samoa Longline Bigeye Tuna Catch/1000 Hooks by Quarter for



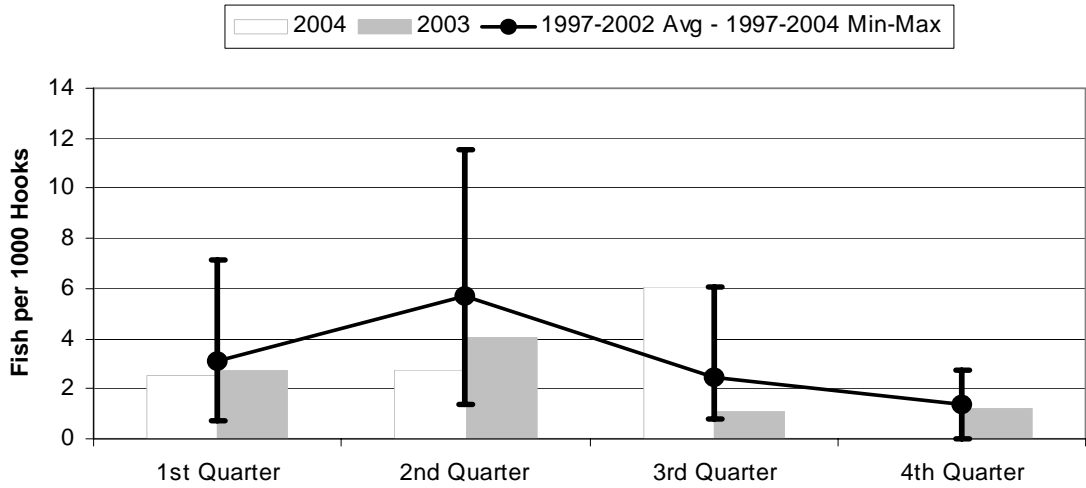
	1st Quarter	2nd Quarter	3rd Quarter	4th Quarter
2004	1.283	1.351	1.694	0.000
2003	0.926	2.145	0.887	0.618
1997-2004 Max	1.283	2.145	1.694	1.030
1997-2002 Avg	0.461	0.721	0.792	0.571
1997-2004 Min	0.146	0.452	0.479	0.000

Figure 15. American Samoa Longline Skipjack Tuna Catch/1000 Hooks by Quarter for



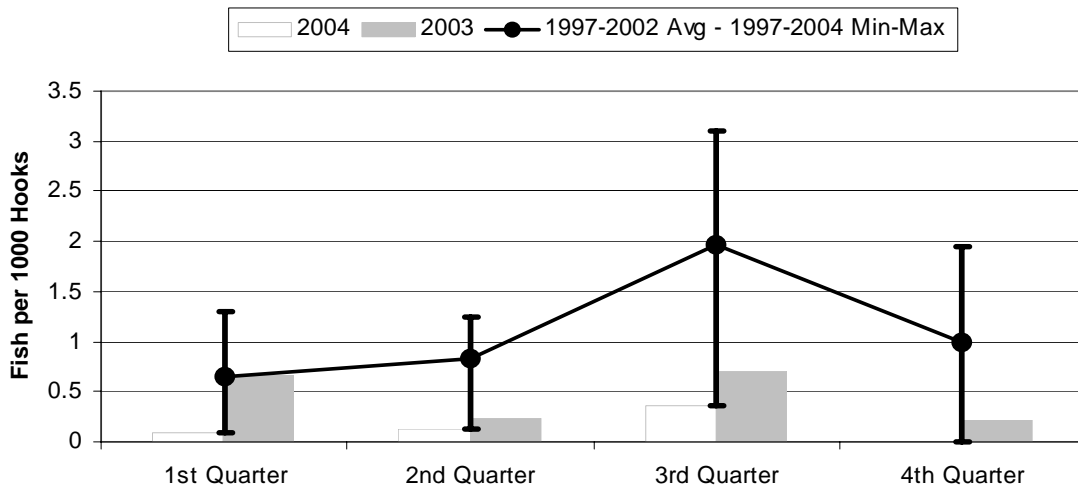
	1st Quarter	2nd Quarter	3rd Quarter	4th Quarter
2004	1.450	2.960	8.051	0.000
2003	4.556	4.025	2.557	1.485
1997-2004 Max	4.556	4.155	8.051	9.975
1997-2002 Avg	1.225	1.833	4.655	3.543
1997-2004 Min	0.000	0.118	2.399	0.000

Figure 16. American Samoa Yellowfin Tuna Catch/1000 Hooks by Quarter for



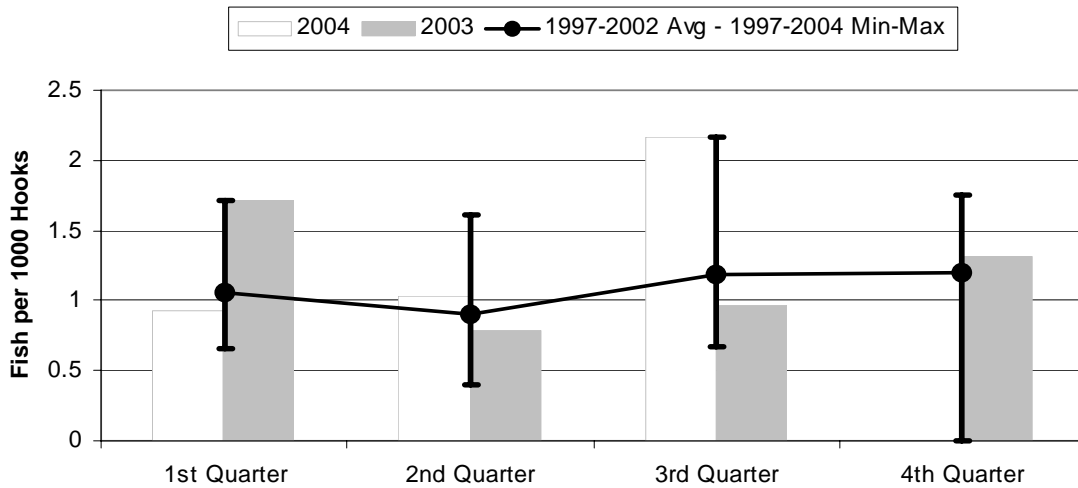
	1st Quarter	2nd Quarter	3rd Quarter	4th Quarter
2004	2.534	2.754	6.098	0.000
2003	2.716	4.046	1.108	1.256
1997-2004 Max	7.139	11.57	6.098	2.759
1997-2002 Avg	3.099	5.728	2.421	1.396
1997-2004 Min	0.695	1.394	0.826	0.000

Figure 17. American Samoa Longline Mahimahi Catch/1000 Hooks by Quarter for



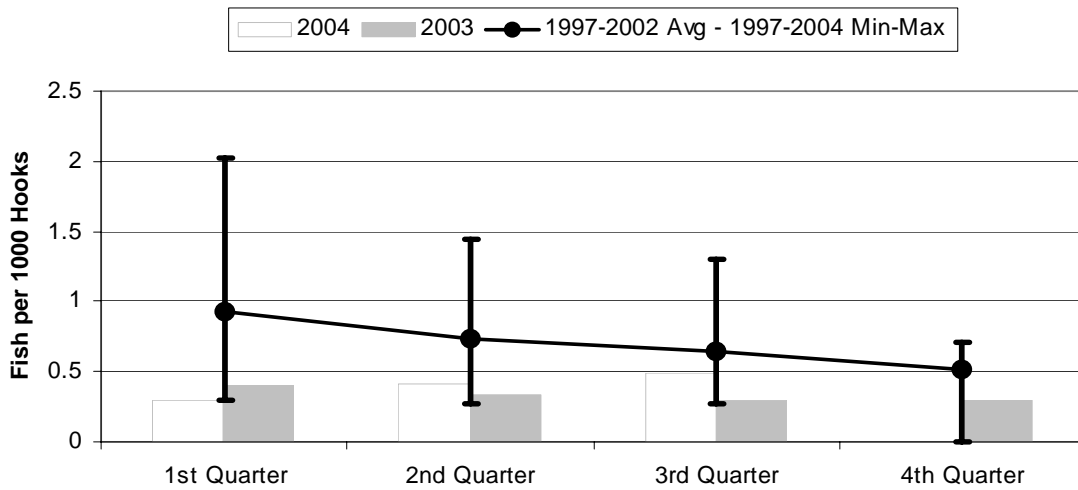
	1st Quarter	2nd Quarter	3rd Quarter	4th Quarter
2004	0.099	0.123	0.357	0.000
2003	0.676	0.233	0.708	0.219
1997-2004 Max	1.305	1.248	3.106	1.940
1997-2002 Avg	0.647	0.834	1.969	1.000
1997-2004 Min	0.091	0.123	0.357	0.000

Figure 18. American Samoa Wahoo Catch/1000 Hooks by Quarter for



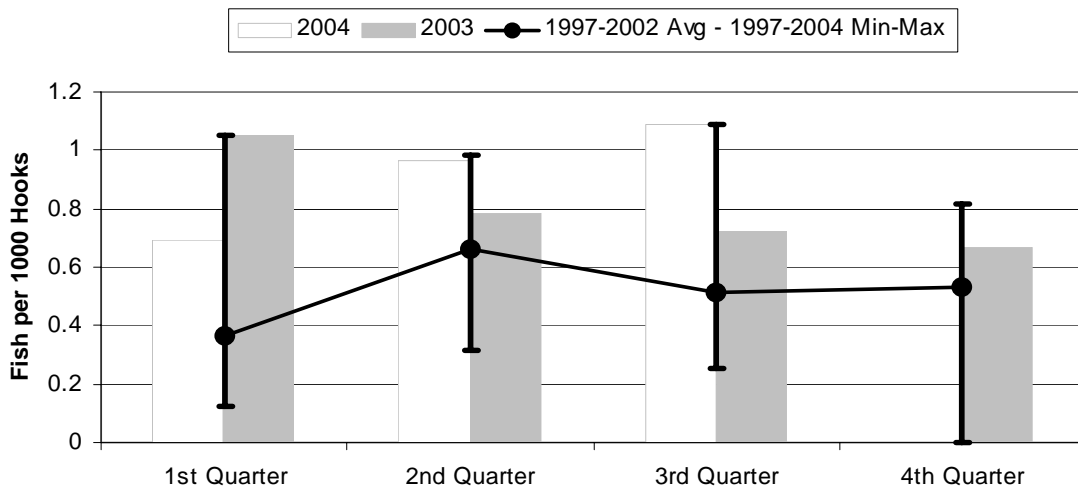
	1st Quarter	2nd Quarter	3rd Quarter	4th Quarter
2004	0.930	1.030	2.161	0.000
2003	1.710	0.790	0.961	1.319
1997-2004 Max	1.710	1.617	2.161	1.755
1997-2002 Avg	1.052	0.908	1.181	1.202
1997-2004 Min	0.657	0.394	0.669	0.000

Figure 19. American Samoa Billfish Catch/1000 Hooks by Quarter for



	1st Quarter	2nd Quarter	3rd Quarter	4th Quarter
2004	0.291	0.418	0.489	0.000
2003	0.396	0.333	0.291	0.302
1997-2004 Max	2.019	1.439	1.298	0.713
1997-2002 Avg	0.931	0.740	0.650	0.519
1997-2004 Min	0.291	0.268	0.271	0.000

Figure 20. American Samoa Shark Catch/1000 Hooks by Quarter for



	1st Quarter	2nd Quarter	3rd Quarter	4th Quarter
2004	0.695	0.962	1.090	0.000
2003	1.051	0.787	0.727	0.666
1997-2004 Max	1.051	0.986	1.090	0.819
1997-2002 Avg	0.364	0.663	0.515	0.532
1997-2004 Min	0.122	0.315	0.256	0.000