

Department of Marine & Wildlife Resources
Report on the NMFS Logbook Program for the
American Samoa Longline Fishery
July-September 2003

January 14, 2004

The Department of Marine and Wildlife Resources (DMWR) began processing the longline logbook data locally at the beginning of the year 2000 and very significant progress has been made to improve compliance of reporting requirements in the American Samoa longline fishery. Logbook data in this report are summarized by date of haul as shown in the following table. All submitted logbook data for longline activities during the third quarter of 2003 have been processed and are reported in this preliminary report. As of January 14, 2004, the documented delinquency rate according to the DMWR Daily Effort Census and Delinquency Reporting System for the third quarter of 2003 was 11.14%. The summary data in this report are considered preliminary and subject to change as additional delinquent data are received and processed.

According to the Daily Effort Census, 51 vessels were engaged in longline fishing during the third quarter of 2003 and 44 of these vessels turned in some or all of their longline logs for sets made during the quarter. These 44 vessels made 1,779 sets and set 4,145,337 hooks. Compared to the third quarter of 2002, there is an increase of 23.6% of the number of sets made with a 20.1% increase in the number of hooks set. The average number of hooks per set increased from 1,886 to 2,330, caused primarily by the relative increase in the activity of the large vessels in the fleet which set more hooks per set than the smaller alia fleet.

The total catch of all species decreased by 37.0% compare to third quarter 2002. Albacore continued to dominate the catch with only 62,696 fishes caught in the third quarter of 2003. This is a dramatic decrease by 36.0% of the 98,030 albacores caught in the third quarter of 2002 and also decreased by 4.5% of the albacore catch for the second quarter of 2003. Indeed catches of other species decreased dramatically with skipjack tuna catches decreasing by 57.3%, yellowfin tuna decreasing by 45.4%, bigeye tuna decreasing by 26.1%, mahimahi decreasing by 47.4%, wahoo only decreased by 8.1%, the catch of billfish increased by 32.7% and sharks by 27.7%.

The total catch rates decreased by 47.5% with a CPUE of 23.30 fishes per 1000 hooks compare to the 44.38 fishes per 1000 hooks of its a year ago value. Albacore CPUE decreased by 18.27% of its previous quarter value and by 46.7% of its a year ago value to 15.12 fish per 1000 hooks in the third quarter of 2003. This is close to the all time low of 11.78 fish per 1000 hooks for this species. The CPUE for all other species, except for billfishes which increased by 10.7% (CPUE : 0.3) and for shark (CPUE : 0.754) which increased by 6.5%, decreased dramatically over their year ago values. The CPUE for skipjack (CPUE : 2.56) decreased 64.4% from the quarter a year ago, yellowfin (CPUE : 1.086) also decreased by 54.5%, bigeye tuna (CPUE : 0.914)

decreased by 38.5%, mahimahi (CPUE : 0.717) decreased by 56.1 %, and wahoo (CPUE : 0.967) decreased by 23.5% compared to last year.

Western Pacific Logbook Summary Report for 3rd Quarter 2003

Vessels landing or based in American Samoa
Based on Date of Haul for all areas

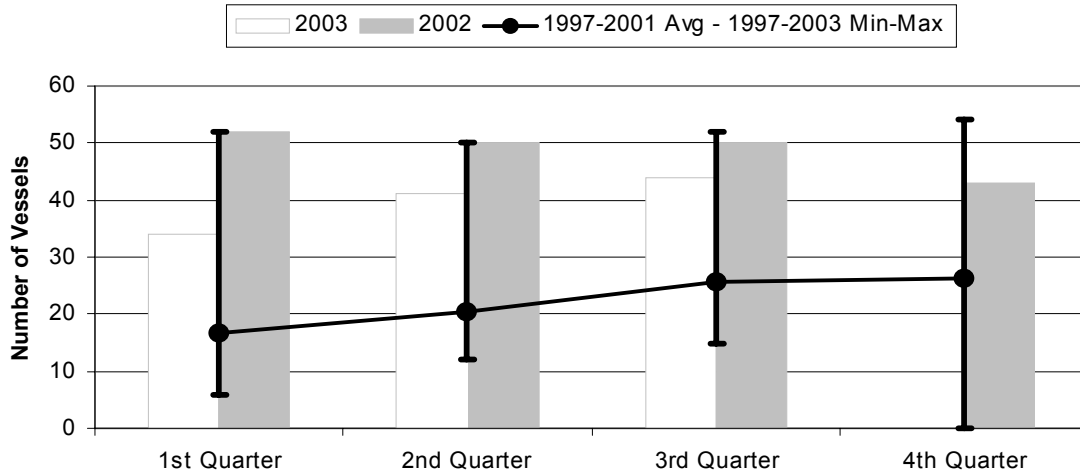
TRIP INFORMATION

Number of Vessels:	44
Number of Sets:	1779
1000's of Hooks Set:	4145
Number of Lightsticks Used:	684

CATCH INFORMATION

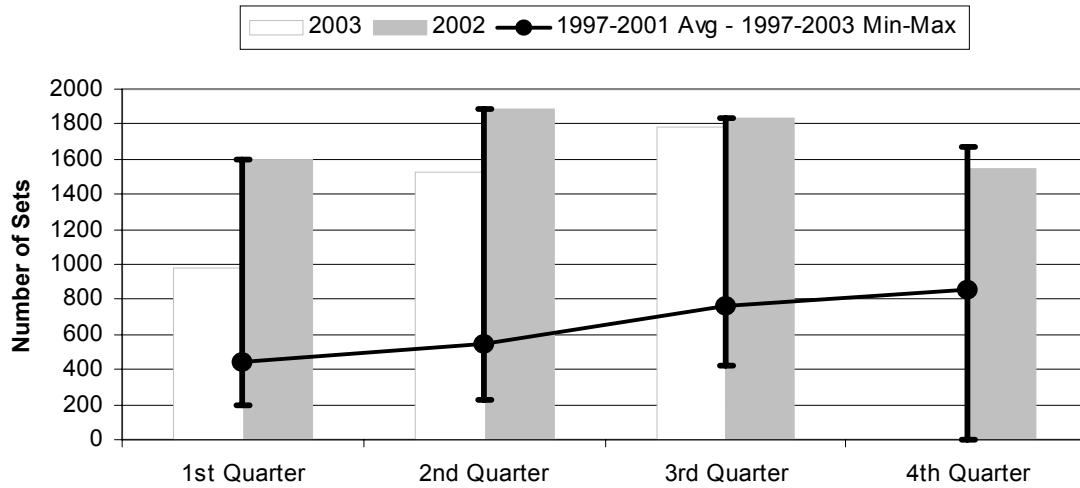
Species	# Caught	# Kept	# Finned	# Caught/ 1000 Hooks
BILLFISH				
Black marlin	9	0		0.00
Blue marlin	653	53		0.16
Striped Marlin	110	43		0.03
Sailfish	158	18		0.04
Spearfish	171	62		0.04
Swordfish	142	80		0.03
TOTALS	1243	256		0.30
SHARKS				
Blue shark	2265	40		0.55
Mako Shark	178	4		0.04
Thresher Shark	110	0		0.03
White-Tip Shark	504	7		0.12
Other Sharks	67	2		0.02
TOTALS	3124	53		0.75
TUNA				
Albacore	62696	62670		15.12
Bigeye Tuna	3789	3452		0.91
Bluefin Tuna	9	8		0.00
Skipjack Tuna	10612	6985		2.56
Yellowfin Tuna	4500	4222		1.09
TOTALS	81606	77337		19.69
OTHER PELAGICS				
Mahimahi	2974	1803		0.72
Moonfish	358	60		0.09
Oilfish	2312	33		0.56
Pomfret	375	65		0.09
Wahoo	4010	3598		0.97
TOTALS	10029	5559		2.42
NON-PMUS				
Other Pelagic Fish	589	4		0.14
TOTALS	589	4		0.14

Figure 1. American Samoa Longline Vessels Submitting Logs by Quarter for



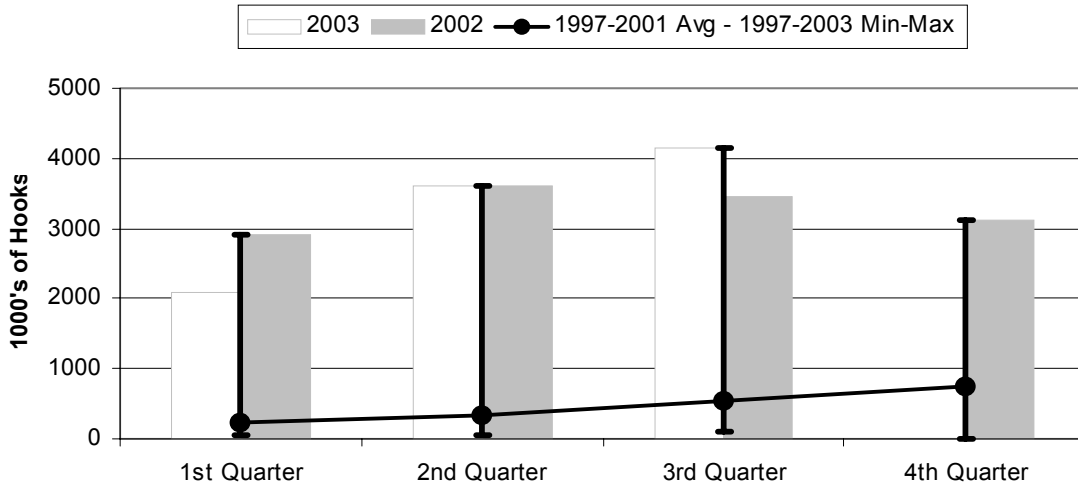
	1st Quarter	2nd Quarter	3rd Quarter	4th Quarter
2003	34	41	44	0
2002	52	50	50	43
1997-2003 Max	52	50	52	54
1997-2001 Avg	16.8	20.4	25.8	26.2
1997-2003 Min	6	12	15	0

Figure 2. Number of Sets by American Samoa Longline Vessels by Quarter for



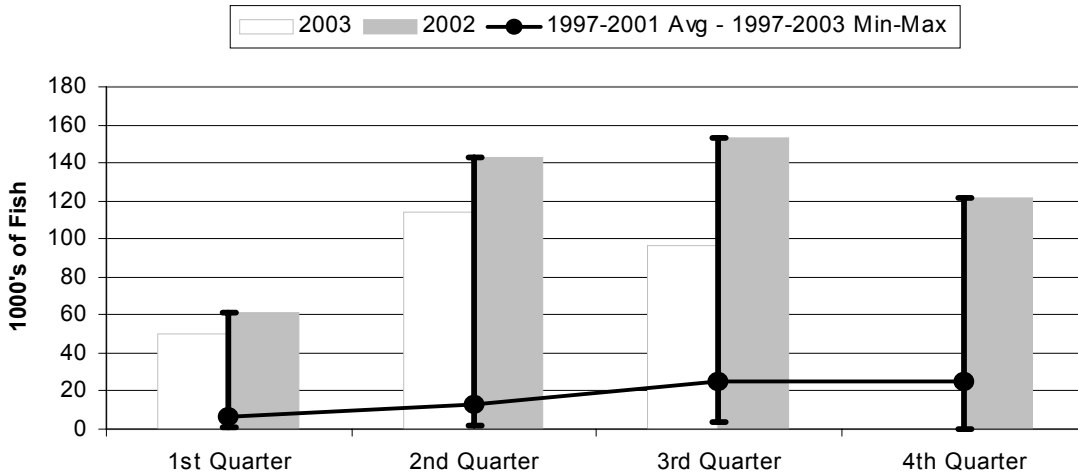
	1st Quarter	2nd Quarter	3rd Quarter	4th Quarter
2003	982	1528	1779	0
2002	1602	1886	1831	1543
1997-2003 Max	1602	1886	1831	1665
1997-2001 Avg	441	543	766	854
1997-2003 Min	192	222	424	0

Figure 3. Number of Hooks Set by the American Samoa Longline Fleet by Quarter for



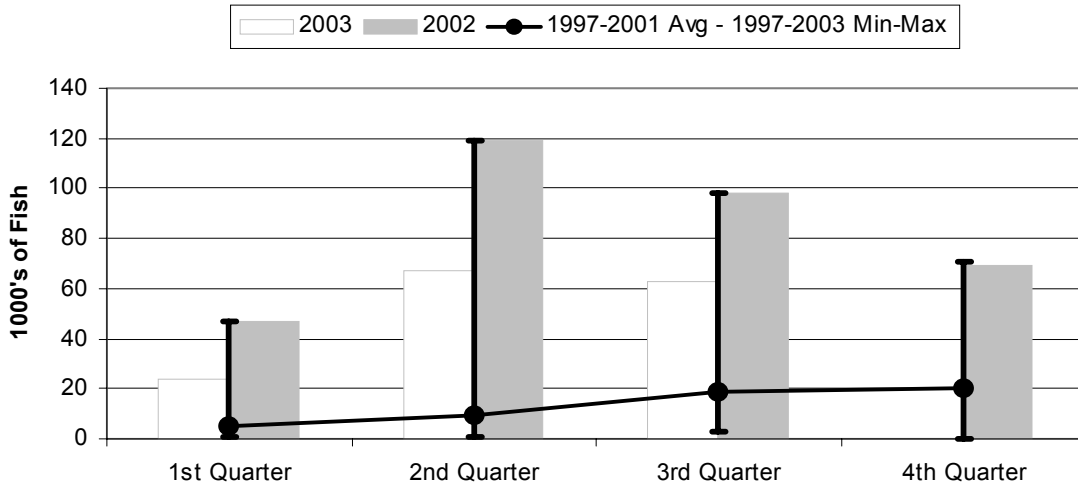
	1st Quarter	2nd Quarter	3rd Quarter	4th Quarter
2003	2083	3611	4145	0
2002	2904	3613	3453	3107
1997-2003 Max	2904	3613	4145	3107
1997-2001 Avg	221	324	547	756
1997-2003 Min	41	51	102	0

Figure 4. American Samoa Longline Total Catch (All Species) by Quarter for



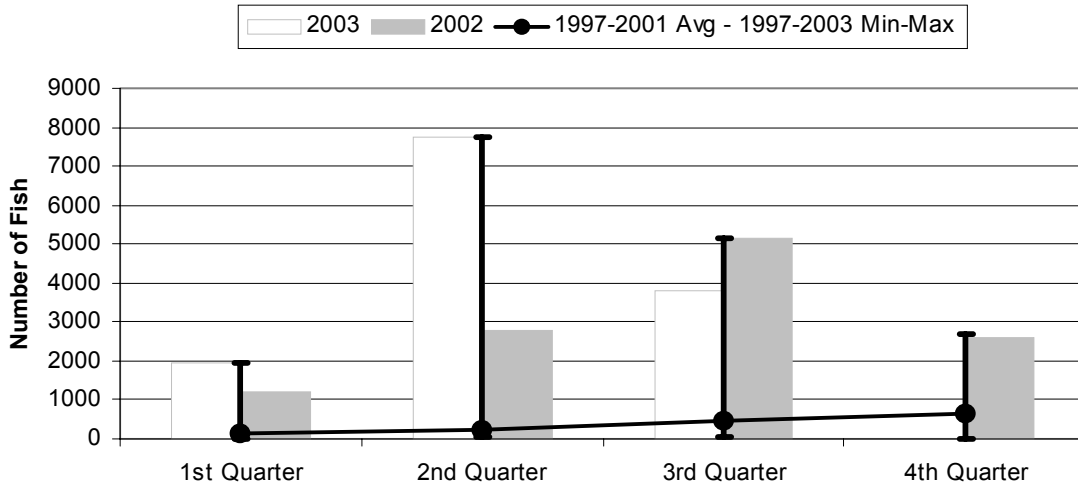
	1st Quarter	2nd Quarter	3rd Quarter	4th Quarter
2003	50.47	114.04	96.59	0.00
2002	61.24	142.60	153.23	121.83
1997-2003 Max	61.24	142.60	153.23	121.83
1997-2001 Avg	6.65	13.31	25.10	25.30
1997-2003 Min	1.32	1.41	4.13	0.00

Figure 5. American Samoa Longline Albacore Catch by Quarter for



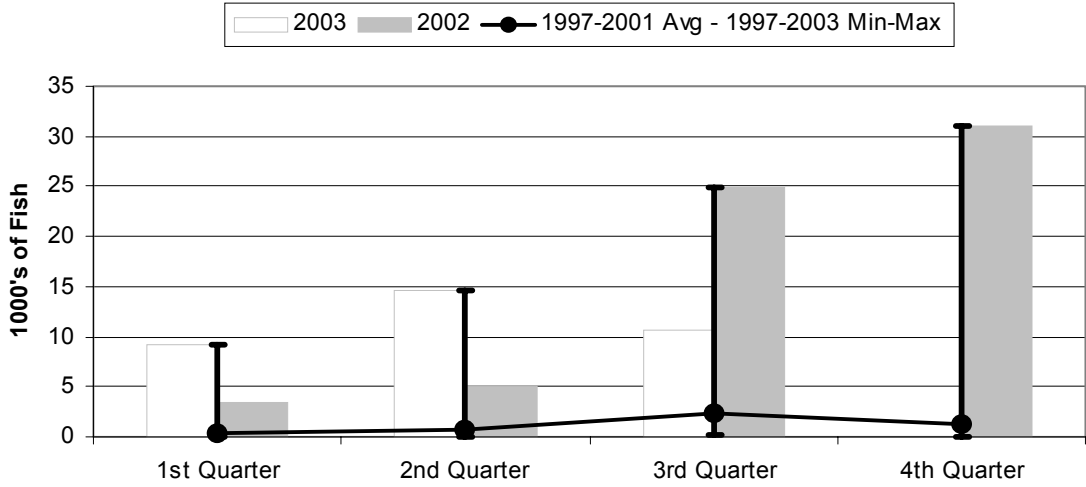
	1st Quarter	2nd Quarter	3rd Quarter	4th Quarter
2003	23.93	66.78	62.70	0.00
2002	46.98	118.99	98.03	69.21
1997-2003 Max	46.98	118.99	98.03	70.53
1997-2001 Avg	4.91	9.65	18.83	20.30
1997-2003 Min	0.94	0.85	3.18	0.00

Figure 6. American Samoa Longline Bigeye Tuna Catch by Quarter for



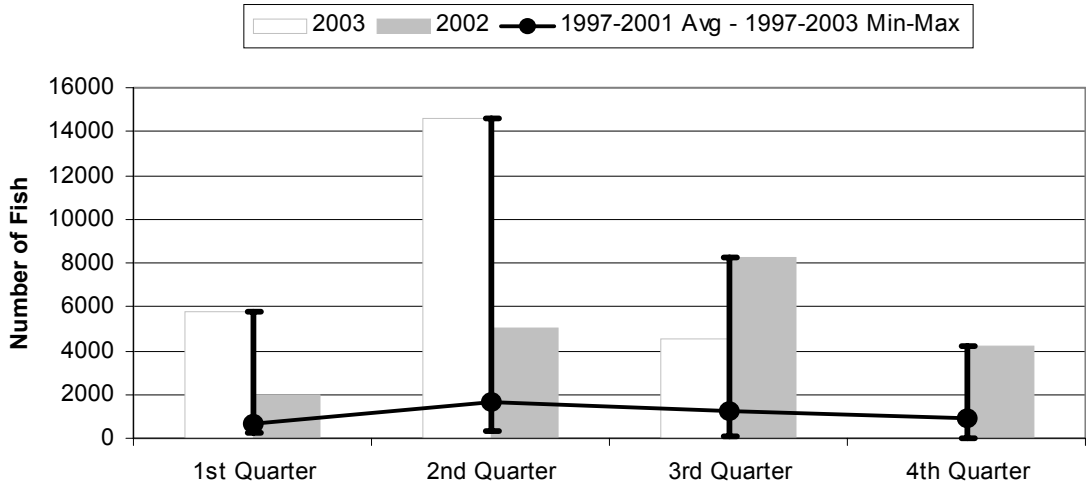
	1st Quarter	2nd Quarter	3rd Quarter	4th Quarter
2003	1942	7740	3789	0
2002	1188	2798	5130	2619
1997-2003 Max	1942	7740	5130	2678
1997-2001 Avg	121	251	455	634
1997-2003 Min	6	26	55	0

Figure 7. American Samoa Longline Skipjack Tuna Catch by Quarter for



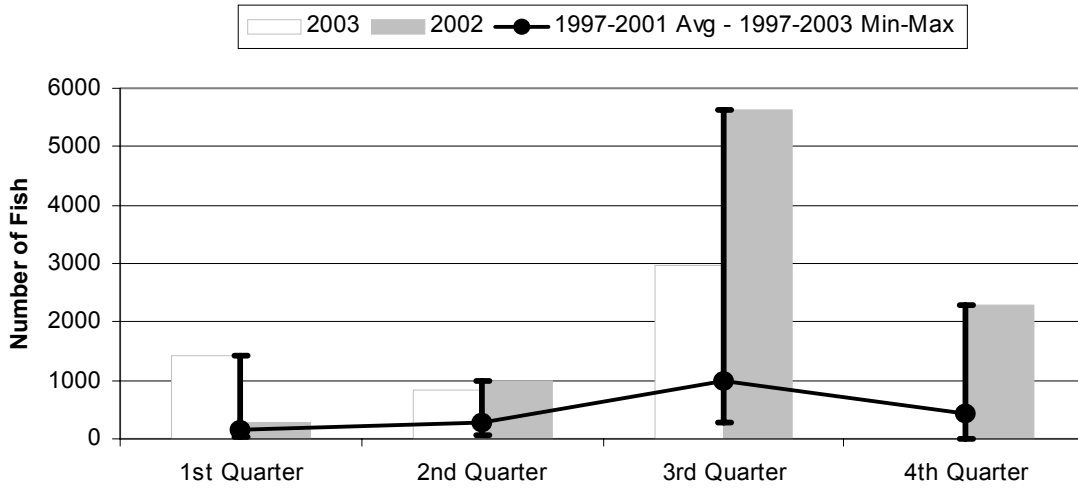
	1st Quarter	2nd Quarter	3rd Quarter	4th Quarter
2003	9.20	14.61	10.61	0.00
2002	3.37	4.99	24.86	31.11
1997-2003 Max	9.20	14.61	24.86	31.11
1997-2001 Avg	0.28	0.68	2.27	1.24
1997-2003 Min	0.00	0.01	0.24	0.00

Figure 8. American Samoa Longline Yellowfin Tuna Catch by Quarter for



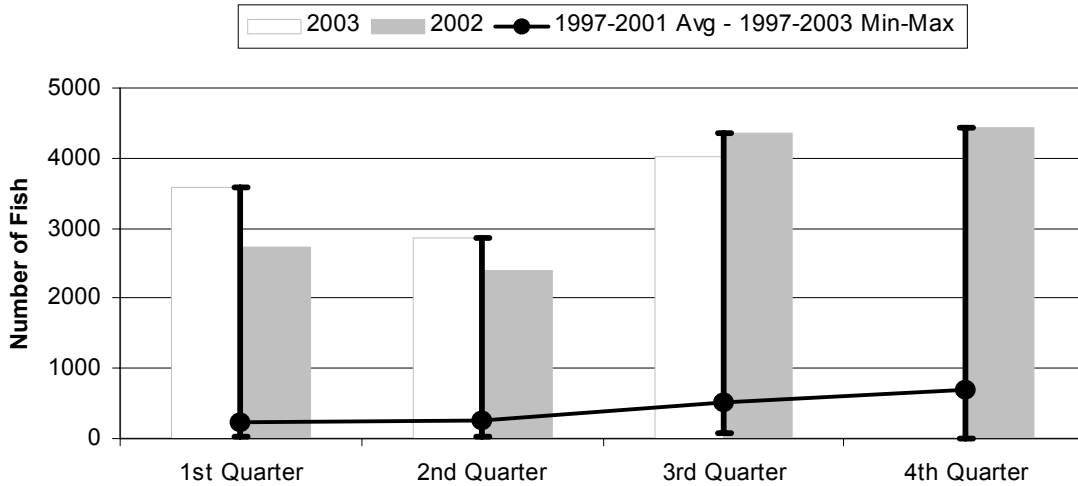
	1st Quarter	2nd Quarter	3rd Quarter	4th Quarter
2003	5754	14603	4500	0
2002	2017	5037	8241	4181
1997-2003 Max	5754	14603	8241	4181
1997-2001 Avg	669	1673	1212	874
1997-2003 Min	213	356	84	0

Figure 9. American Samoa Mahimahi Catch by Quarter for



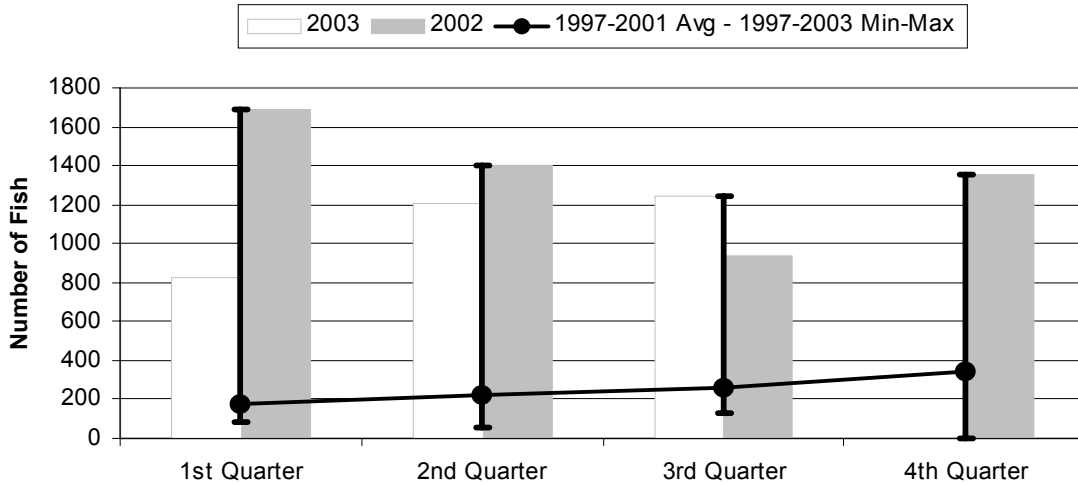
	1st Quarter	2nd Quarter	3rd Quarter	4th Quarter
2003	1429	847	2974	0
2002	263	979	5642	2287
1997-2003 Max	1429	979	5642	2287
1997-2001 Avg	141	265	987	445
1997-2003 Min	30	59	280	0

Figure 10. American Samoa Wahoo Catch by Quarter for



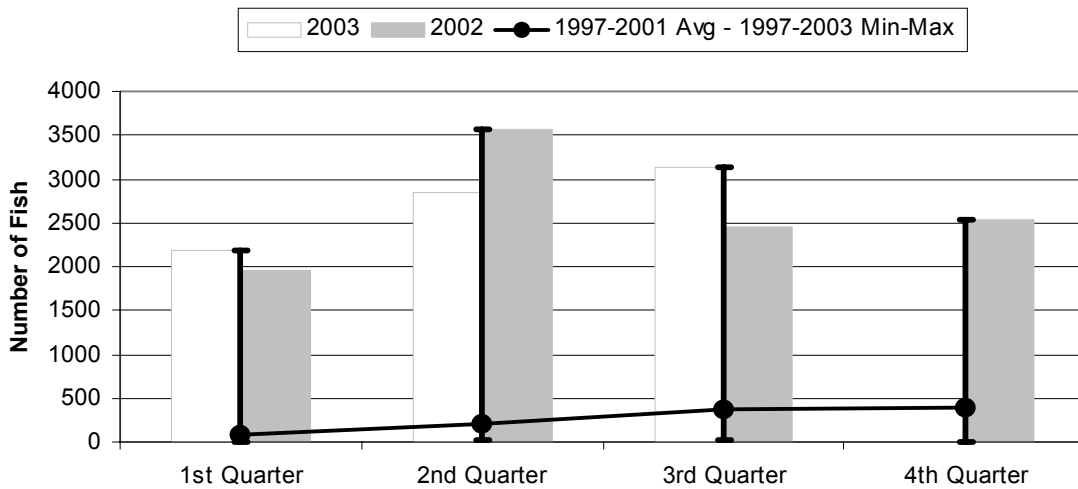
	1st Quarter	2nd Quarter	3rd Quarter	4th Quarter
2003	3589	2861	4010	0
2002	2729	2394	4365	4440
1997-2003 Max	3589	2861	4365	4440
1997-2001 Avg	236	259	525	705
1997-2003 Min	27	20	68	0

Figure 11. American Samoa Billfish Catch by Quarter for



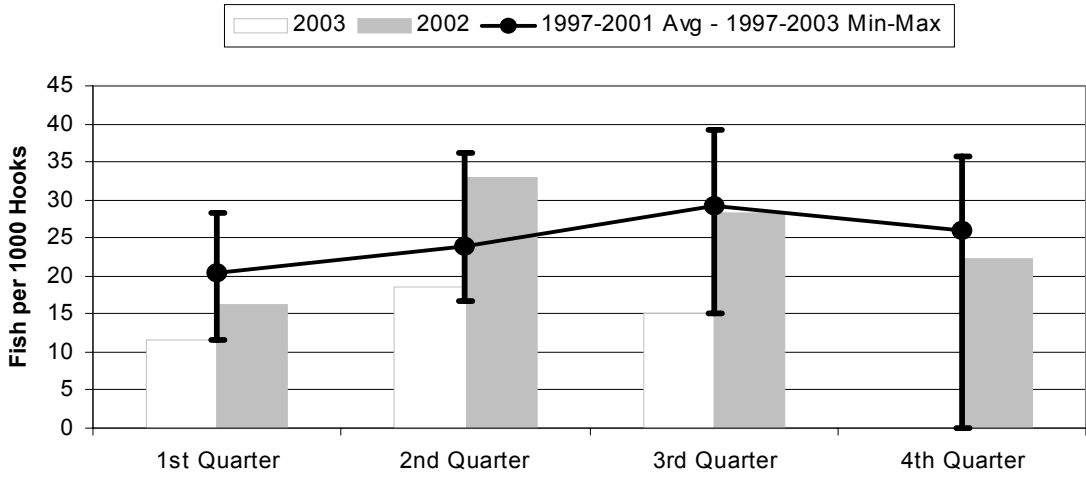
	1st Quarter	2nd Quarter	3rd Quarter	4th Quarter
2003	827	1206	1243	0
2002	1692	1404	937	1351
1997-2003 Max	1692	1404	1243	1351
1997-2001 Avg	178	224	259	340
1997-2003 Min	83	58	132	0

Figure 12. American Samoa Shark Catch by Quarter for



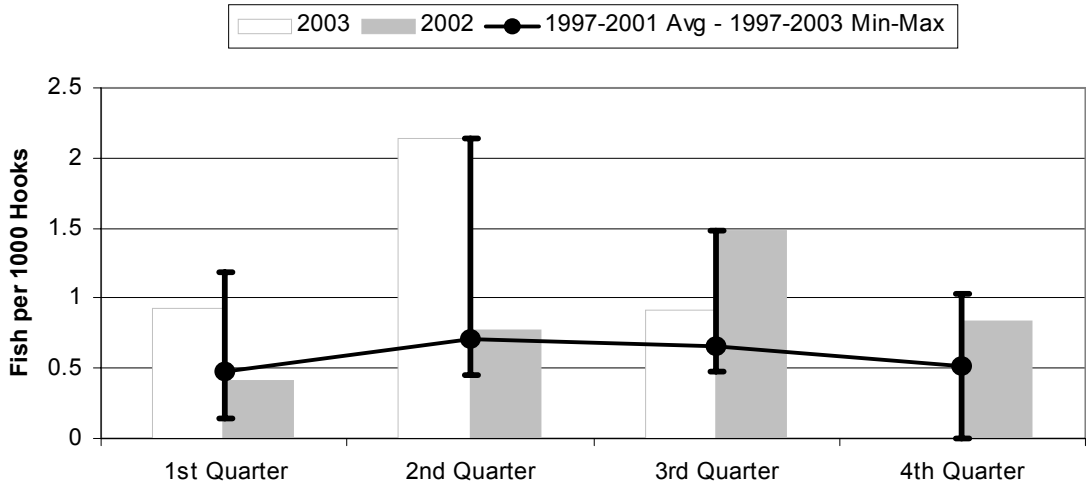
	1st Quarter	2nd Quarter	3rd Quarter	4th Quarter
2003	2191	2838	3124	0
2002	1968	3562	2446	2535
1997-2003 Max	2191	3562	3124	2535
1997-2001 Avg	76	203	372	391
1997-2003 Min	5	15	26	0

Figure 13. American Samoa Longline Albacore Catch/1000 Hooks by Quarter for



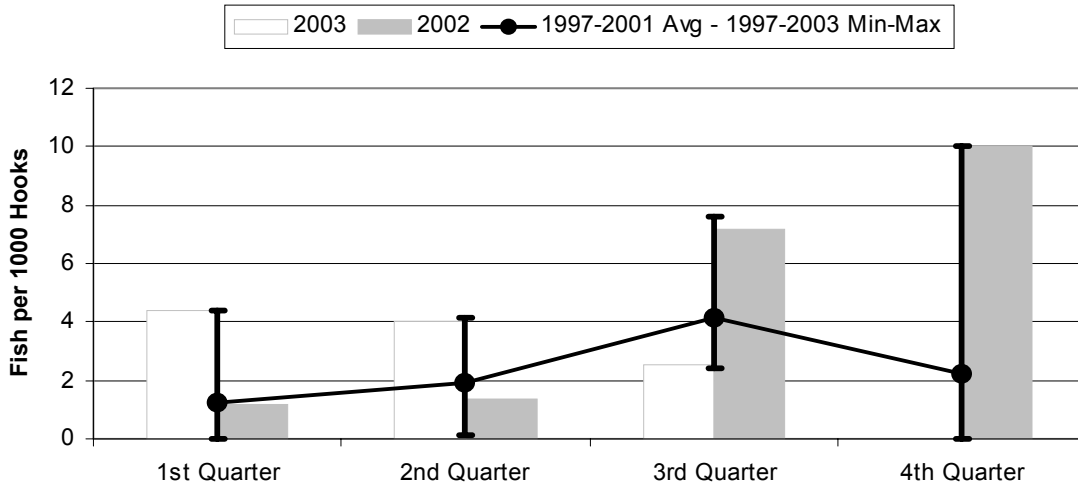
	1st Quarter	2nd Quarter	3rd Quarter	4th Quarter
2003	11.49	18.49	15.12	0.00
2002	16.18	32.93	28.39	22.27
1997-2003 Max	28.33	36.18	39.13	35.68
1997-2001 Avg	20.43	23.78	29.26	26.08
1997-2003 Min	11.49	16.80	15.12	0.00

Figure 14. American Samoa Longline Bigeye Tuna Catch/1000 Hooks by Quarter for



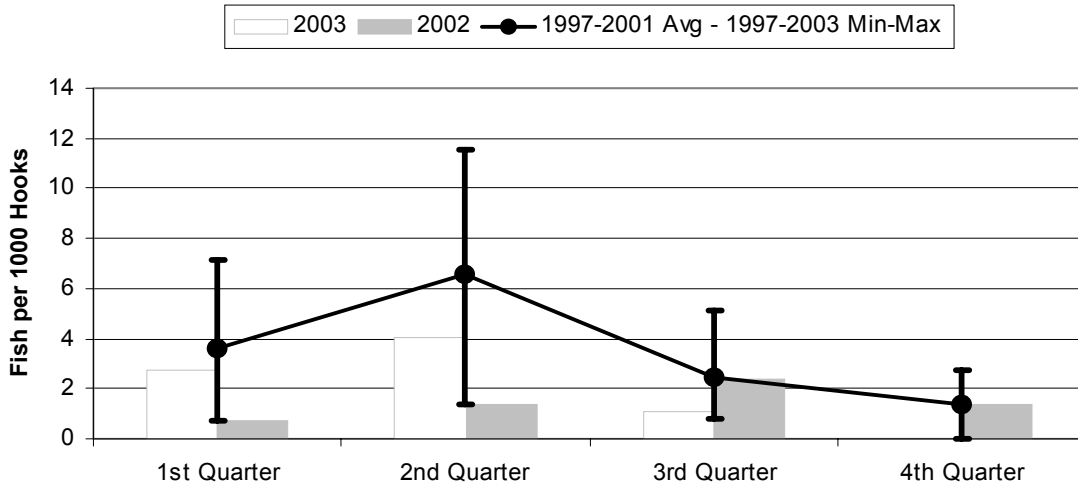
	1st Quarter	2nd Quarter	3rd Quarter	4th Quarter
2003	0.932	2.144	0.914	0.000
2002	0.409	0.774	1.486	0.843
1997-2003 Max	1.185	2.144	1.486	1.030
1997-2001 Avg	0.471	0.710	0.653	0.518
1997-2003 Min	0.146	0.452	0.479	0.000

Figure 15. American Samoa Longline Skipjack Tuna Catch/1000 Hooks by Quarter for



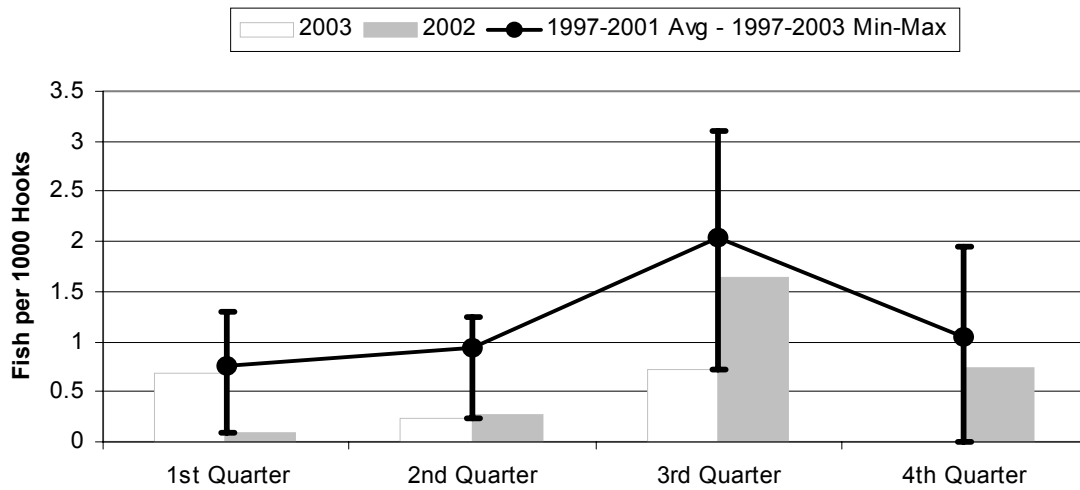
	1st Quarter	2nd Quarter	3rd Quarter	4th Quarter
2003	4.418	4.045	2.560	0.000
2002	1.160	1.380	7.199	10.01
1997-2003 Max	4.418	4.155	7.615	10.01
1997-2001 Avg	1.238	1.923	4.148	2.257
1997-2003 Min	0.000	0.119	2.399	0.000

Figure 16. American Samoa Yellowfin Tuna Catch/1000 Hooks by Quarter for



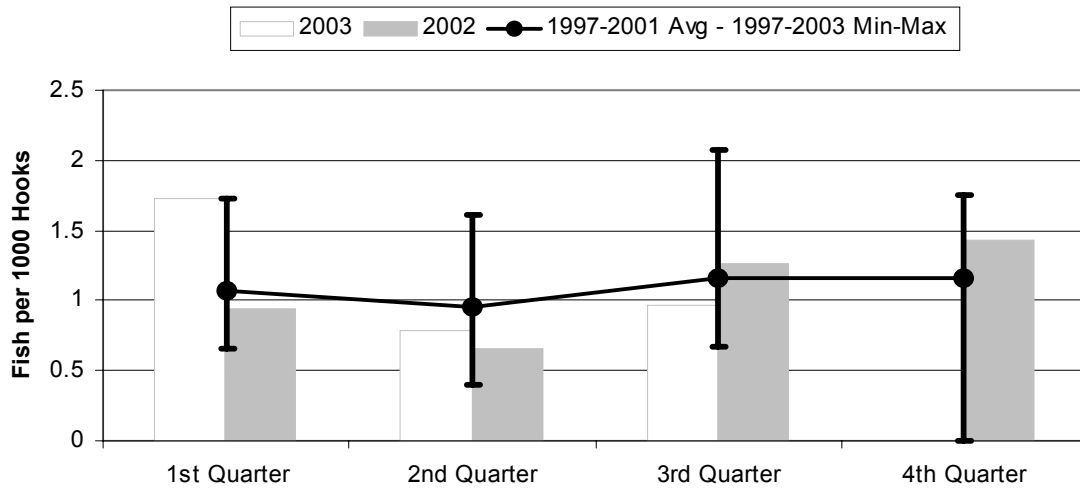
	1st Quarter	2nd Quarter	3rd Quarter	4th Quarter
2003	2.763	4.044	1.086	0.000
2002	0.695	1.394	2.387	1.346
1997-2001 Avg	3.580	6.600	2.428	1.407
1997-2003 Max	7.139	11.57	5.088	2.759
1997-2003 Min	0.695	1.394	0.826	0.000

Figure 17. American Samoa Longline Mahimahi Catch/1000 Hooks by Quarter for



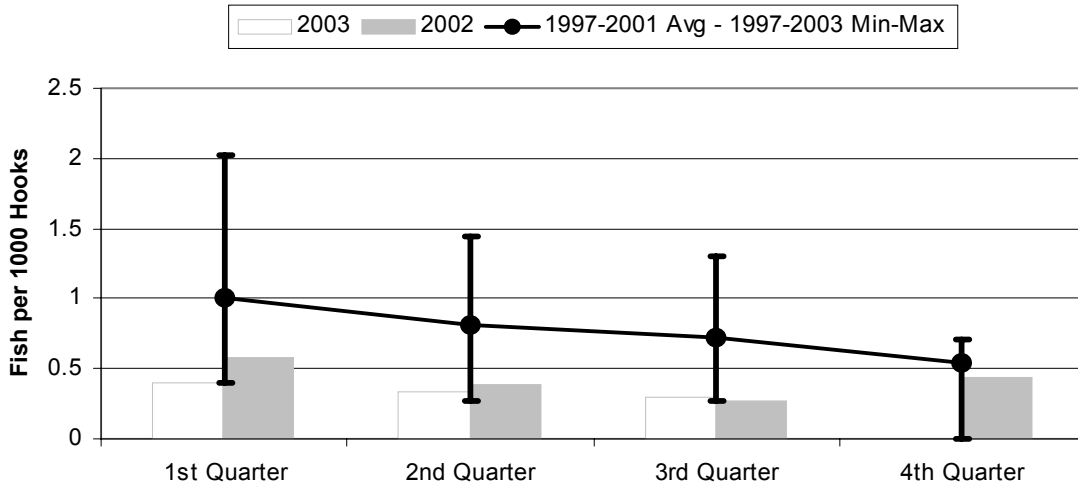
	1st Quarter	2nd Quarter	3rd Quarter	4th Quarter
2003	0.686	0.235	0.717	0.000
2002	0.091	0.271	1.634	0.736
1997-2003 Max	1.305	1.248	3.106	1.940
1997-2001 Avg	0.758	0.947	2.036	1.053
1997-2003 Min	0.091	0.235	0.717	0.000

Figure 18. American Samoa Wahoo Catch/1000 Hooks by Quarter for



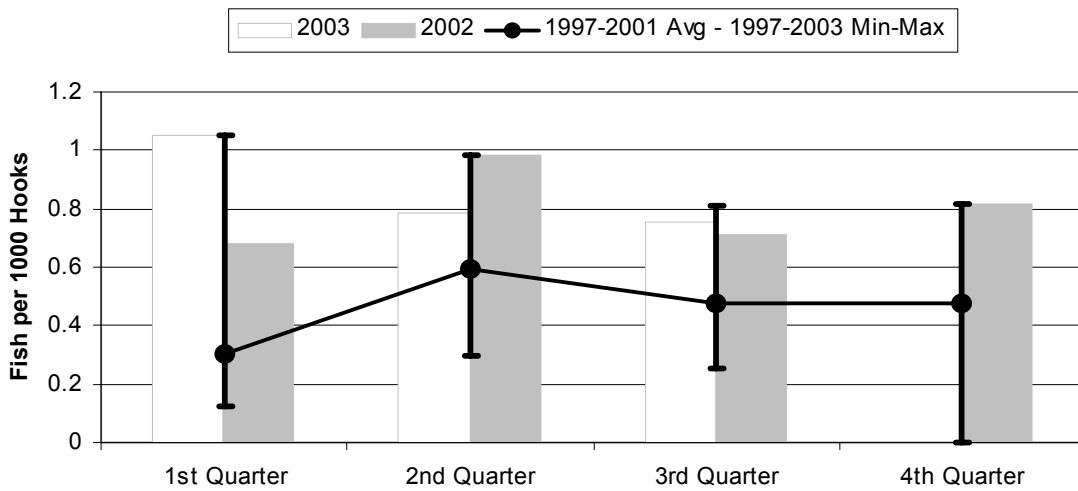
	1st Quarter	2nd Quarter	3rd Quarter	4th Quarter
2003	1.723	0.792	0.967	0.000
2002	0.940	0.663	1.264	1.429
1997-2001 Avg	1.075	0.957	1.165	1.157
1997-2003 Max	1.723	1.617	2.080	1.755
1997-2003 Min	0.657	0.396	0.669	0.000

Figure 19. American Samoa Billfish Catch/1000 Hooks by Quarter for



	1st Quarter	2nd Quarter	3rd Quarter	4th Quarter
2003	0.397	0.334	0.300	0.000
2002	0.583	0.389	0.271	0.435
1997-2003 Max	2.019	1.444	1.298	0.713
1997-2001 Avg	1.000	0.812	0.726	0.536
1997-2003 Min	0.397	0.268	0.271	0.000

Figure 20. American Samoa Shark Catch/1000 Hooks by Quarter for



	1st Quarter	2nd Quarter	3rd Quarter	4th Quarter
2003	1.052	0.786	0.754	0.000
2002	0.678	0.986	0.708	0.816
1997-2003 Max	1.052	0.986	0.810	0.816
1997-2001 Avg	0.301	0.595	0.477	0.475
1997-2003 Min	0.122	0.297	0.256	0.000