

Department of Marine & Wildlife Resources
Report on the NMFS Logbook Program for the
American Samoa Longline Fishery
January-March 2006

September 21, 2006

Logbook data in this report are summarized by date of haul as shown in the following table. All submitted logbook data for longline activities during the first quarter of 2006 have been processed and are reported in this preliminary report. As of September 21, 2006, the documented delinquency rate according to the DMWR Daily Effort Census and Delinquency Reporting System for the first quarter of 2006 was 1.82%. The summary data in this report are considered preliminary and subject to change as additional delinquent data are received and processed.

According to the Daily Effort Census, 25 vessels were engaged in longline fishing during the first quarter of 2006 and 22 of these vessels turned in some or all of their longline logs for sets made during the quarter. These 22 vessels made 1,027 sets and set 2,836,630 hooks. This quarter reflects the trend in American Samoa toward a smaller number of vessels of larger size setting more hooks. The number of vessels participating this quarter is down from the 24 vessels fishing in the 1st Quarter of 2005, yet the number of sets increased by 57% and the number of hooks set almost doubles with a 98% increase /compared to the year ago quarter. The average number of hooks per set decreased slightly from 2779 in the 4th Quarter of 2005 to 2762 this quarter, reflecting the continued demise of the alia longline fleet and the dominance of the large longline vessels. Many of the alia are no longer active and those that are active are bottomfishing. The demand and price/pound for bottomfish is higher in the local Samoan market than it is for pelagic fish and bottomfishing requires less fuel, bait and equipment.

The total catch for all species of 60,640 fish was 3 ½ times the 17210 fish caught during the really bad first quarter of 2005. Albacore continued to dominate the catch with 35,141 fish caught in the first quarter of 2006. This is less than half or down 52% from to 73,800 albacore caught in the fourth quarter of last year. Catches of other species also increased dramatically when compared to the bad year ago quarter. Skipjack tuna catches increased by 3.19 times, yellowfin tuna catches increased by 7.8 times and bigeye tuna catches increased by 5.28 times the first quarter of 2005 catches. Of the non-tuna species the wahoo catch increase by 2.0 times, the billfish catch increased by 4.18 times and the shark catch increased by 1.18 times the 1st Quarter 2005 values. The only species whose catch decreased was mahimahi and it decreased to 1/4th or 23.7% of its 1st Quarter 2005 value.

The Catch/1000 hooks or CPUE also increased dramatically when compared to the bad 1st Quarter of 2005 but not as dramatically as the catch because of the larger fishing effort in the 1st Quarter of 2006. Albacore CPUE increased to 1.88 times its value during the bad first quarter of 2005. Skipjack tuna CPUE increased by 1.60 times, yellowfin tuna CPUE increased by 3.93 times and bigeye tuna increased by 2.66 times. For non-tuna species the wahoo CPUE stayed almost the same, the shark CPUE increased by 18% and the billfish CPUE increased by 2.10 times. The only species whose CPUE decreased compared to the bad 1st Quarter of 2005 was mahimahi and its CPUE decreased to 11.8% of its 1st Quarter of 2005 value.

Western Pacific Logbook Summary Report for 1st Quarter 2006

Vessels landing or based in American Samoa
Based on Date of Haul for all areas

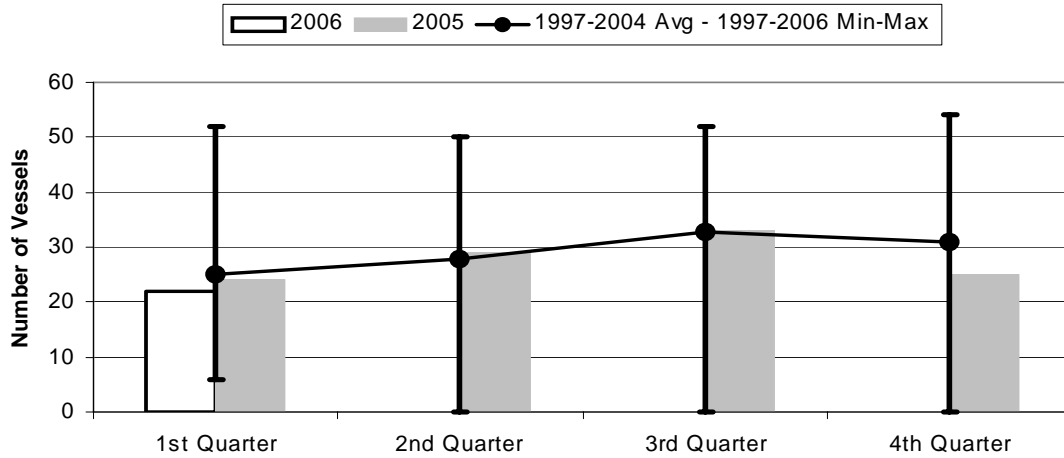
TRIP INFORMATION

Number of Vessels:	22
Number of Sets:	1027
1000's of Hooks Set:	2837
Number of Lightsticks Used:	9001

CATCH INFORMATION

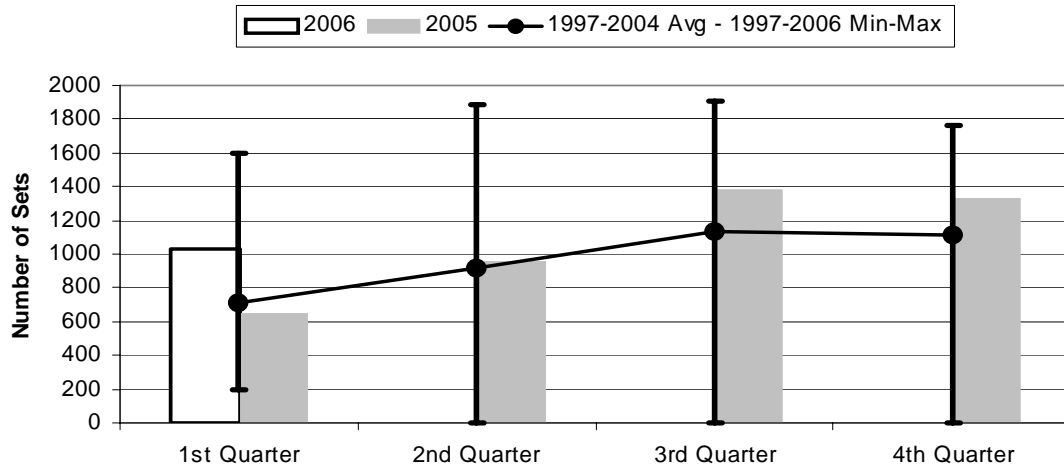
Species	# Caught	# Kept	# Finned	# Caught/ 1000 Hooks
BILLFISH				
Black marlin	1	1		0.00
Blue marlin	623	101		0.22
Striped Marlin	127	57		0.04
Sailfish	140	1		0.05
Spearfish	145	3		0.05
Swordfish	471	432		0.17
TOTALS	1507	595		0.53
SHARKS				
Blue shark	1146	6		0.40
Shortfin Mako Shark	58	1		0.02
Thresher Shark	64	0		0.02
White Tip Oceanic Shark	351	2		0.12
Other Pelagic Sharks	138	0		0.05
TOTALS	1757	9		0.62
TUNA				
Albacore	35141	35083		12.39
Bigeye Tuna	2437	2240		0.86
Bluefin Tuna	10	10		0.00
Skipjack Tuna	6579	5866		2.32
Yellowfin Tuna	7419	7371		2.62
TOTALS	51586	50570		18.19
OTHER PELAGICS				
Mahimahi	97	90		0.03
Moonfish	154	59		0.05
Oilfish	936	37		0.33
Pomfret	222	35		0.08
Wahoo	4367	4302		1.54
TOTALS	5776	4523		2.04
NON-PMUS				
Other Pelagic Fish	9	7		0.00

Figure 1. American Samoa Longline Vessels Submitting Logs by Quarter for



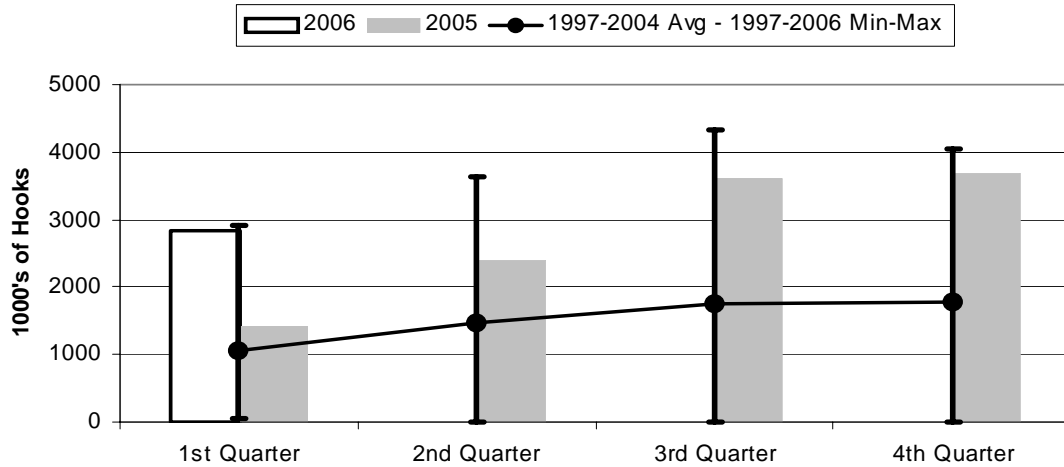
	1st Quarter	2nd Quarter	3rd Quarter	4th Quarter
2006	22	0	0	0
2005	24	29	33	25
1997-2006 Max	52	50	52	54
1997-2004 Avg	25.0	27.9	32.9	31.0
1997-2006 Min	6	0	0	0

Figure 2. Number of Sets by American Samoa Longline Vessels by Quarter for



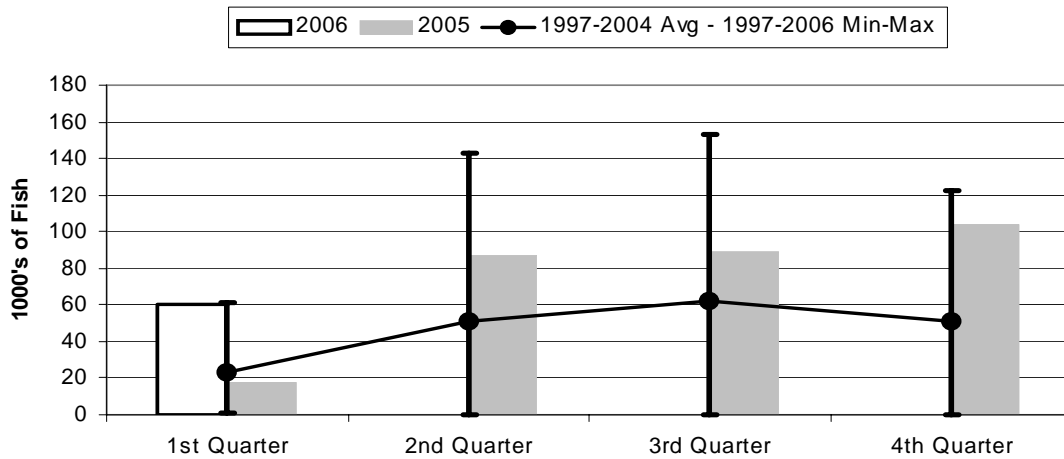
	1st Quarter	2nd Quarter	3rd Quarter	4th Quarter
2006	1027	0	0	0
2005	654	956	1383	1326
1997-2006 Max	1602	1886	1903	1758
1997-2004 Avg	715	913	1130	1110
1997-2006 Min	192	0	0	0

Figure 3. Number of Hooks Set by the American Samoa Longline Fleet by Quarter for



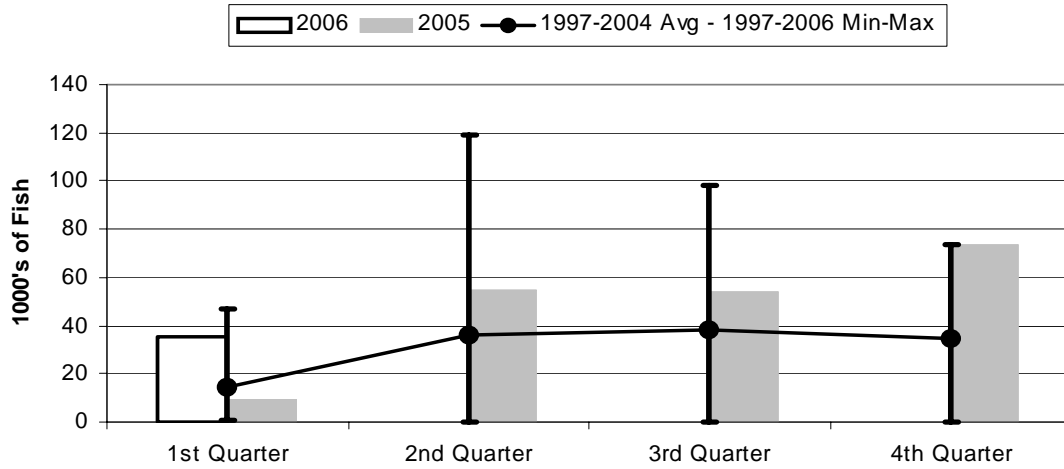
	1st Quarter	2nd Quarter	3rd Quarter	4th Quarter
2006	2837	0	0	0
2005	1429	2400	3605	3685
1997-2006 Max	2902	3629	4338	4044
1997-2004 Avg	1044	1462	1751	1766
1997-2006 Min	41	0	0	0

Figure 4. American Samoa Longline Total Catch (All Species) by Quarter for



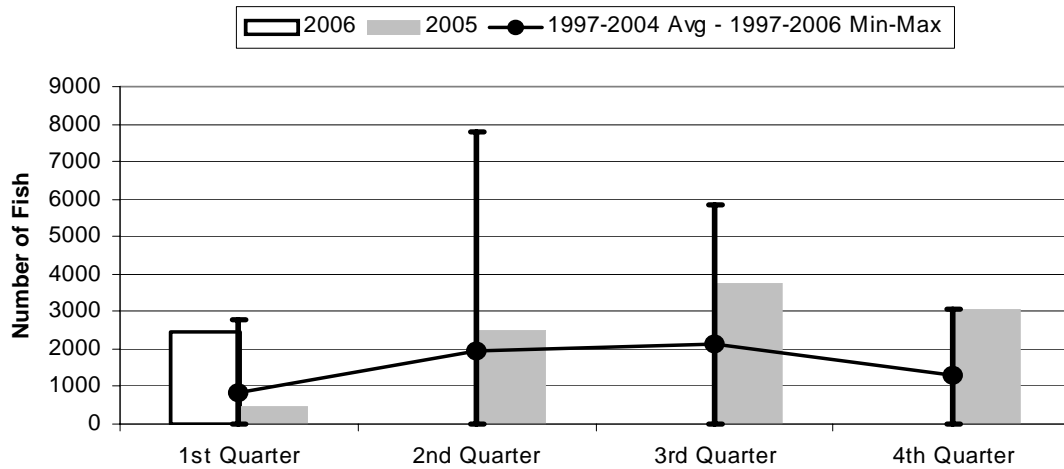
	1st Quarter	2nd Quarter	3rd Quarter	4th Quarter
2006	60.64	0.00	0.00	0.00
2005	17.21	87.16	88.71	104.31
1997-2006 Max	61.24	142.60	153.30	122.34
1997-2004 Avg	22.92	50.84	62.07	51.24
1997-2006 Min	1.32	0.00	0.00	0.00

Figure 5. American Samoa Longline Albacore Catch by Quarter for



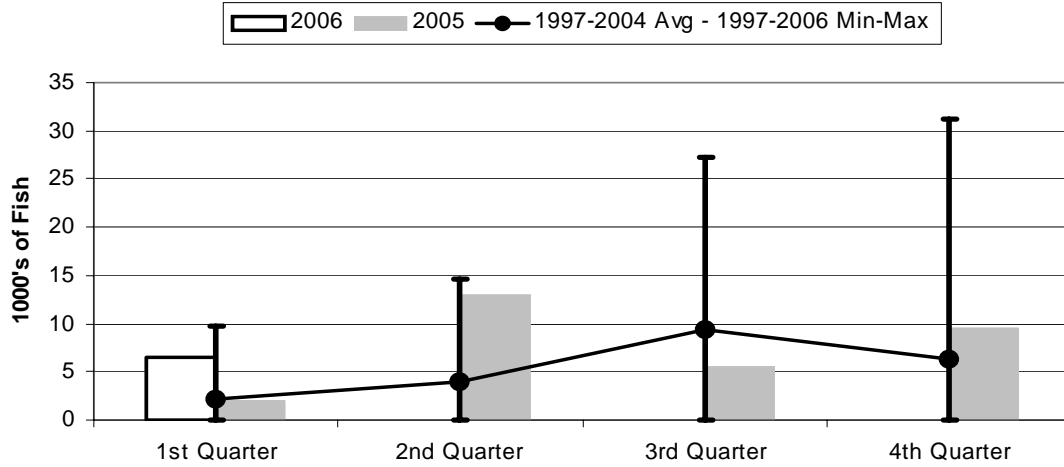
	1st Quarter	2nd Quarter	3rd Quarter	4th Quarter
2006	35.14	0.00	0.00	0.00
2005	9.42	54.90	54.46	73.80
1997-2006 Max	46.98	118.99	98.09	73.80
1997-2004 Avg	14.41	35.94	37.92	34.80
1997-2006 Min	0.94	0.00	0.00	0.00

Figure 6. American Samoa Longline Bigeye Tuna Catch by Quarter for



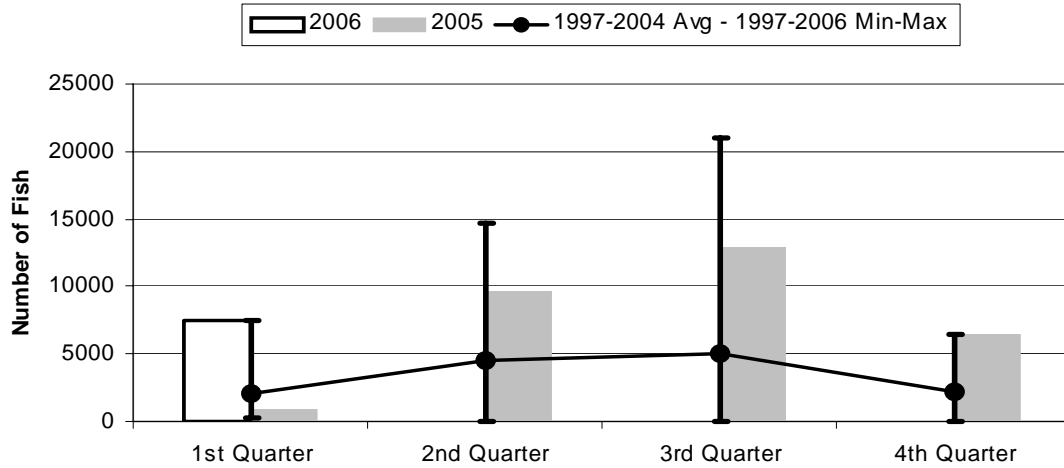
	1st Quarter	2nd Quarter	3rd Quarter	4th Quarter
2006	2437	0	0	0
2005	461	2489	3742	3060
1997-2006 Max	2781	7785	5834	3060
1997-2004 Avg	821	1960	2137	1322
1997-2006 Min	6	0	0	0

Figure 7. American Samoa Longline Skipjack Tuna Catch by Quarter for



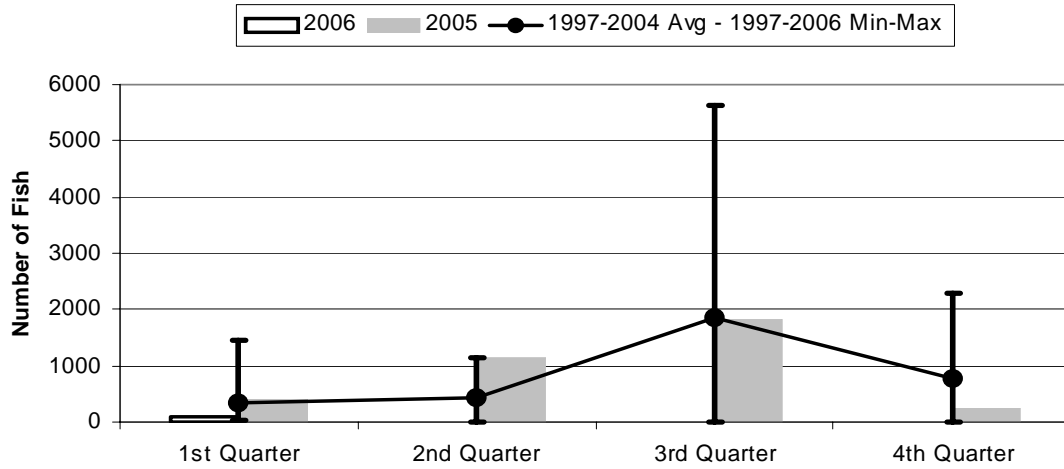
	1st Quarter	2nd Quarter	3rd Quarter	4th Quarter
2006	6.58	0.00	0.00	0.00
2005	2.06	12.93	5.64	9.55
1997-2006 Max	9.81	14.61	27.23	31.19
1997-2004 Avg	2.22	3.92	9.32	6.32
1997-2006 Min	0.00	0.00	0.00	0.00

Figure 8. American Samoa Longline Yellowfin Tuna Catch by Quarter for



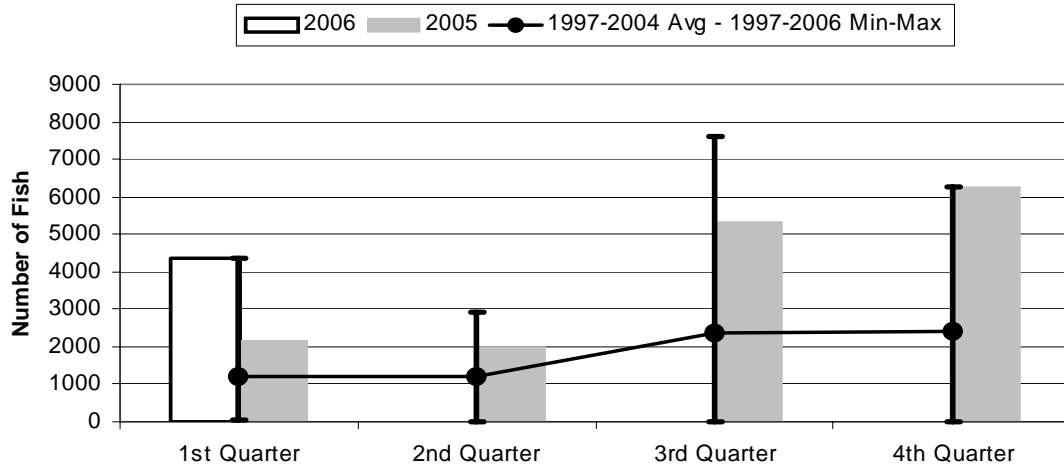
	1st Quarter	2nd Quarter	3rd Quarter	4th Quarter
2006	7419	0	0	0
2005	951	9680	12944	6480
1997-2006 Max	7419	14681	20993	6480
1997-2004 Avg	2088	4486	5015	2177
1997-2006 Min	213	0	0	0

Figure 9. American Samoa Mahimahi Catch by Quarter for



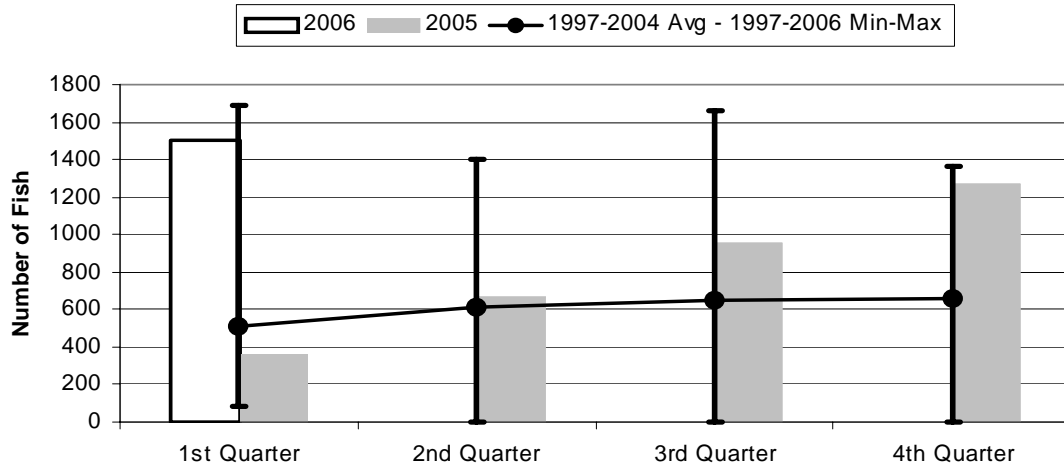
	1st Quarter	2nd Quarter	3rd Quarter	4th Quarter
2006	97	0	0	0
2005	409	1154	1813	235
1997-2006 Max	1455	1154	5642	2297
1997-2004 Avg	330	437	1862	769
1997-2006 Min	30	0	0	0

Figure 10. American Samoa Wahoo Catch by Quarter for



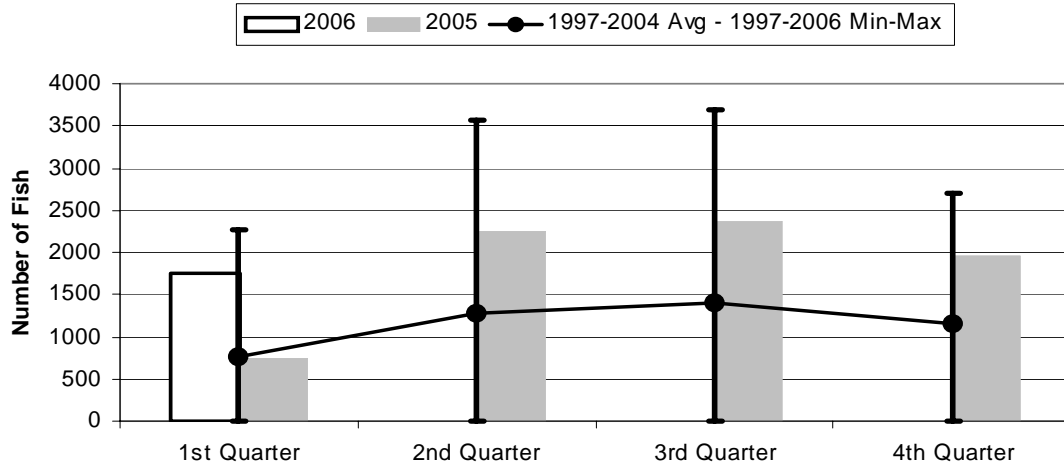
	1st Quarter	2nd Quarter	3rd Quarter	4th Quarter
2006	4367	0	0	0
2005	2158	2007	5341	6267
1997-2006 Max	4367	2921	7629	6267
1997-2004 Avg	1202	1183	2349	2405
1997-2006 Min	27	0	0	0

Figure 11. American Samoa Billfish Catch by Quarter for



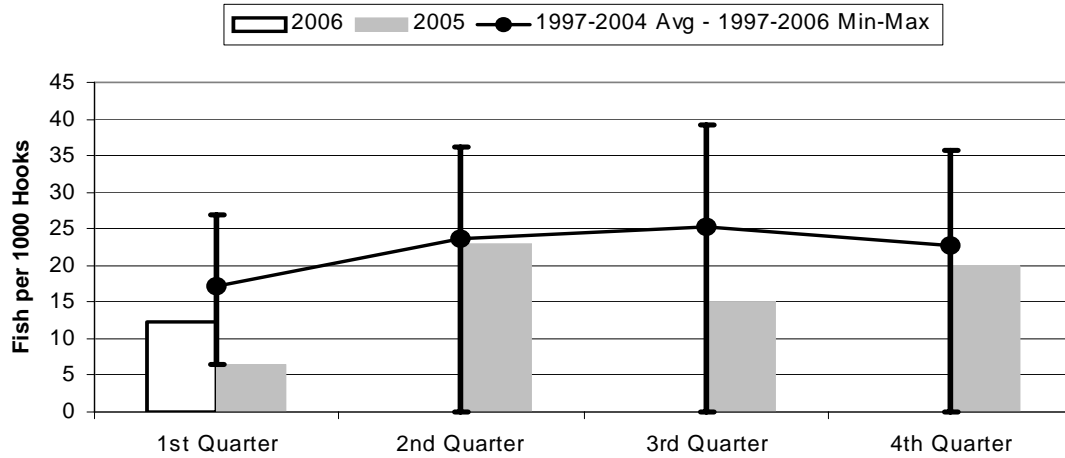
	1st Quarter	2nd Quarter	3rd Quarter	4th Quarter
2006	1507	0	0	0
2005	360	668	958	1268
1997-2006 Max	1692	1404	1663	1361
1997-2004 Avg	509	615	645	655
1997-2006 Min	83	0	0	0

Figure 12. American Samoa Shark Catch by Quarter for



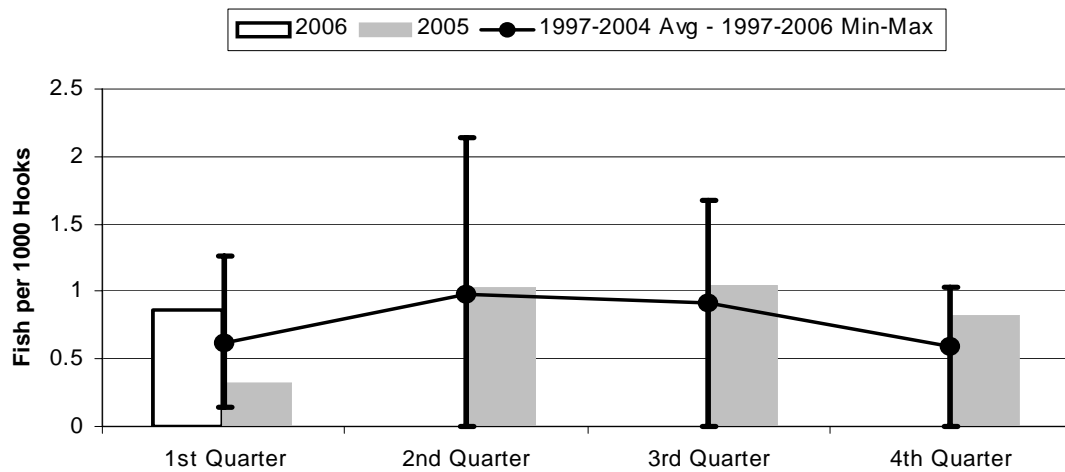
	1st Quarter	2nd Quarter	3rd Quarter	4th Quarter
2006	1757	0	0	0
2005	747	2251	2366	1969
1997-2006 Max	2262	3562	3686	2695
1997-2004 Avg	767	1270	1394	1152
1997-2006 Min	5	0	0	0

Figure 13. American Samoa Longline Albacore Catch/1000 Hooks by Quarter for



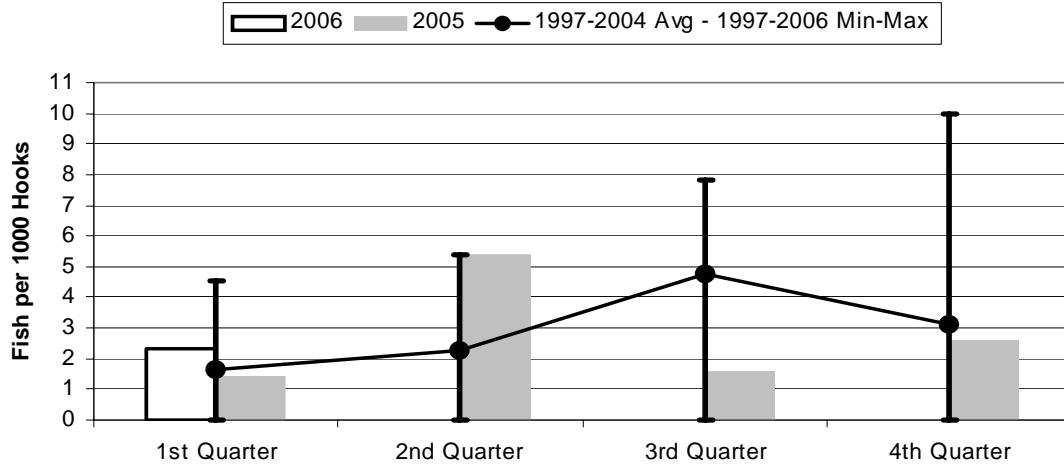
	1st Quarter	2nd Quarter	3rd Quarter	4th Quarter
2006	12.39	0.00	0.00	0.00
2005	6.59	22.88	15.10	20.03
1997-2006 Max	27.01	36.18	39.13	35.75
1997-2004 Avg	17.17	23.62	25.37	22.69
1997-2006 Min	6.59	0.00	0.00	0.00

Figure 14. American Samoa Longline Bigeye Tuna Catch/1000 Hooks by Quarter for



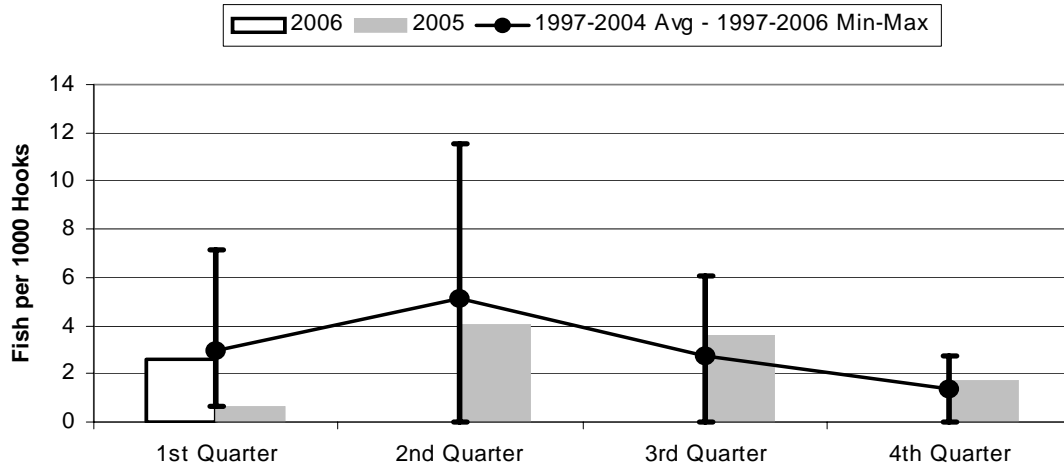
	1st Quarter	2nd Quarter	3rd Quarter	4th Quarter
2006	0.859	0.000	0.000	0.000
2005	0.323	1.037	1.038	0.830
1997-2006 Max	1.267	2.145	1.679	1.030
1997-2004 Avg	0.619	0.982	0.915	0.595
1997-2006 Min	0.146	0.000	0.000	0.000

Figure 15. American Samoa Longline Skipjack Tuna Catch/1000 Hooks by Quarter for



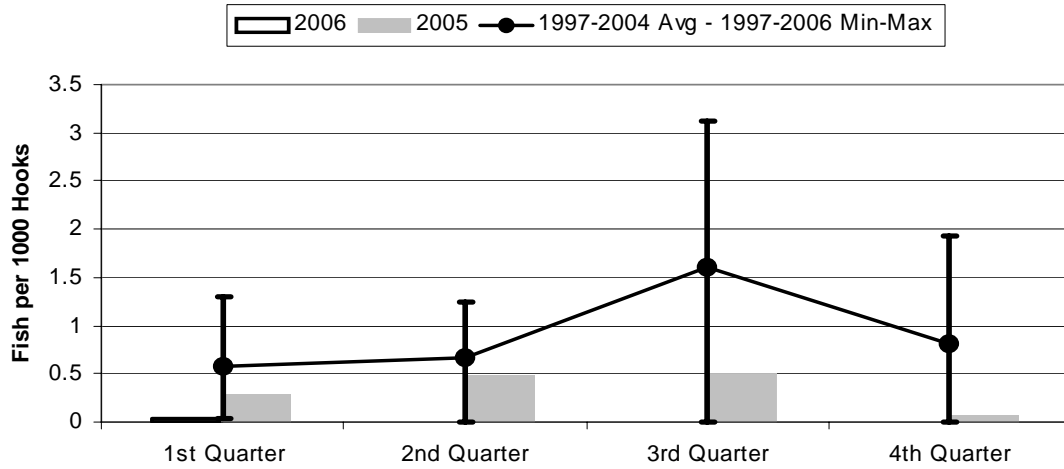
	1st Quarter	2nd Quarter	3rd Quarter	4th Quarter
2006	2.319	0.000	0.000	0.000
2005	1.444	5.388	1.565	2.591
1997-2006 Max	4.556	5.388	7.837	9.975
1997-2004 Avg	1.667	2.247	4.789	3.123
1997-2006 Min	0.000	0.000	0.000	0.000

Figure 16. American Samoa Yellowfin Tuna Catch/1000 Hooks by Quarter for



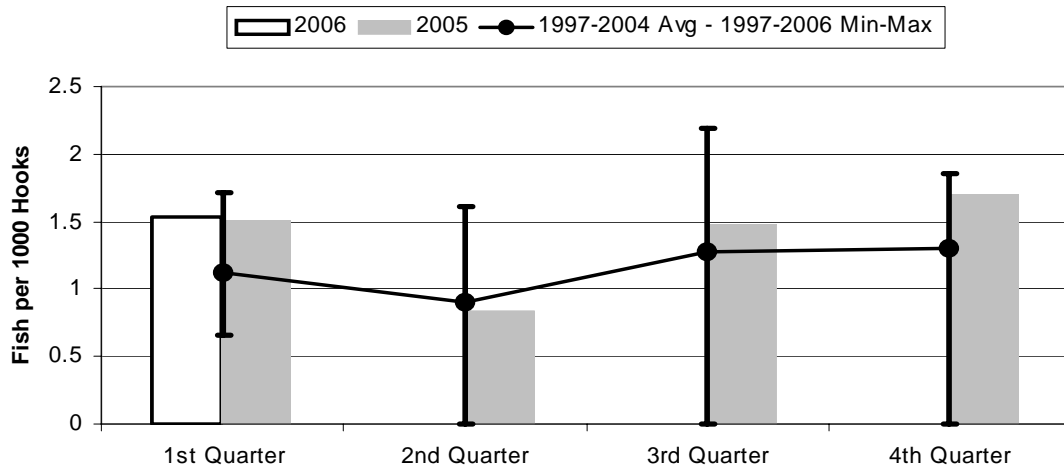
	1st Quarter	2nd Quarter	3rd Quarter	4th Quarter
2006	2.615	0.000	0.000	0.000
2005	0.665	4.034	3.590	1.758
1997-2006 Max	7.120	11.51	6.041	2.757
1997-2004 Avg	2.974	5.138	2.709	1.353
1997-2006 Min	0.665	0.000	0.000	0.000

Figure 17. American Samoa Longline Mahimahi Catch/1000 Hooks by Quarter for



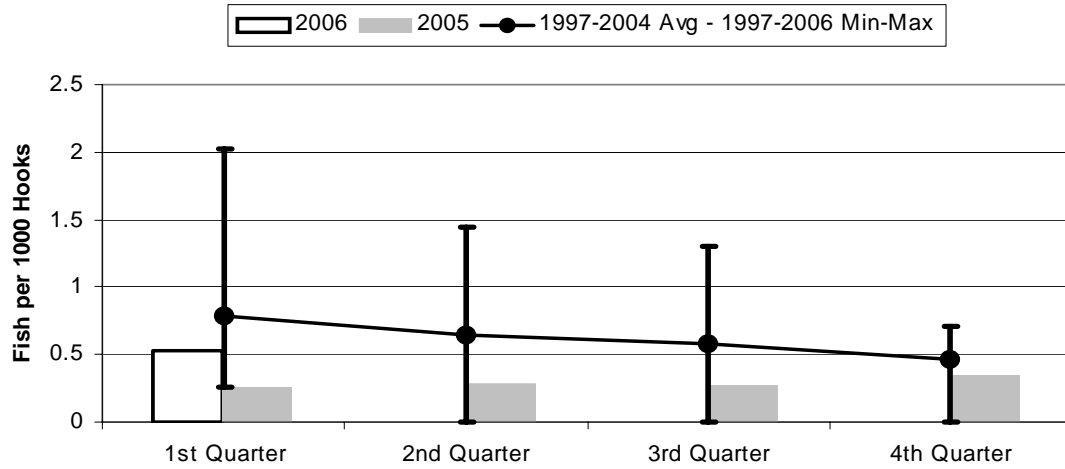
	1st Quarter	2nd Quarter	3rd Quarter	4th Quarter
2006	0.034	0.000	0.000	0.000
2005	0.286	0.481	0.503	0.064
1997-2006 Max	1.304	1.248	3.125	1.932
1997-2004 Avg	0.581	0.669	1.611	0.806
1997-2006 Min	0.034	0.000	0.000	0.000

Figure 18. American Samoa Wahoo Catch/1000 Hooks by Quarter for



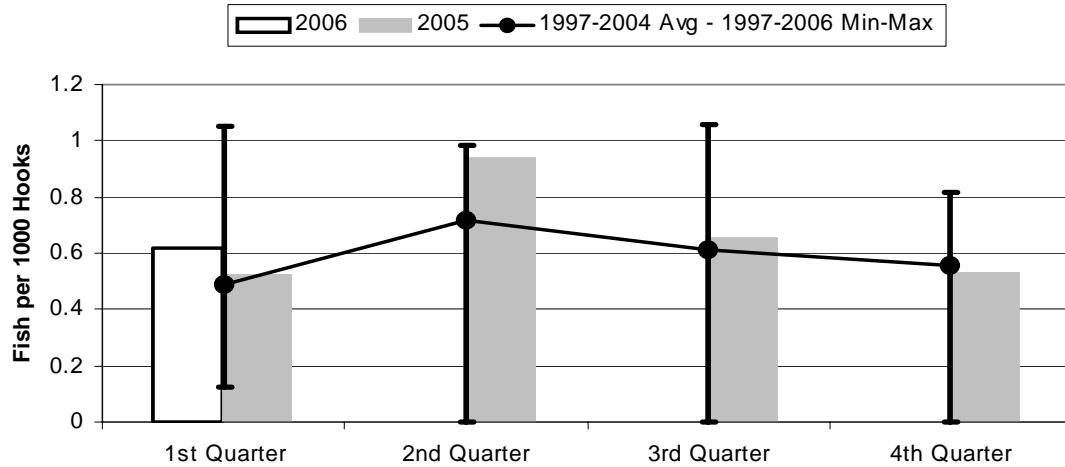
	1st Quarter	2nd Quarter	3rd Quarter	4th Quarter
2006	1.540	0.000	0.000	0.000
2005	1.510	0.836	1.481	1.701
1997-2006 Max	1.710	1.617	2.195	1.861
1997-2004 Avg	1.118	0.903	1.280	1.299
1997-2006 Min	0.657	0.000	0.000	0.000

Figure 19. American Samoa Billfish Catch/1000 Hooks by Quarter for



	1st Quarter	2nd Quarter	3rd Quarter	4th Quarter
2006	0.531	0.000	0.000	0.000
2005	0.252	0.278	0.266	0.344
1997-2006 Max	2.019	1.439	1.306	0.712
1997-2004 Avg	0.783	0.649	0.585	0.465
1997-2006 Min	0.252	0.000	0.000	0.000

Figure 20. American Samoa Shark Catch/1000 Hooks by Quarter for



	1st Quarter	2nd Quarter	3rd Quarter	4th Quarter
2006	0.619	0.000	0.000	0.000
2005	0.523	0.938	0.656	0.534
1997-2006 Max	1.051	0.986	1.061	0.819
1997-2004 Avg	0.491	0.716	0.610	0.556
1997-2006 Min	0.122	0.000	0.000	0.000