

Department of Marine & Wildlife Resources
Report on the NMFS Logbook Program for the
American Samoa Longline Fishery
January-March 2005

May 16, 2005

The Department of Marine and Wildlife Resources (DMWR) began processing the longline logbook data locally at the beginning of the year 2000 and very significant progress has been made to improve compliance of reporting requirements in the American Samoa longline fishery. Logbook data in this report are summarized by date of haul as shown in the following table. All submitted logbook data for longline activities during the first quarter of 2005 have been processed and are reported in this preliminary report. The documented delinquency rate according to the DMWR Daily Effort Census and Delinquency Reporting System for the first quarter of 2005 was 14.04%. The summary data in this report are considered preliminary and subject to change as additional delinquent data are received and processed.

According to the Daily Effort Census, 27 vessels were engaged in longline fishing during the first quarter of 2005 and 24 of these vessels turned in some or all of their longline logs for sets made during the quarter. These 24 vessels made 643 sets and set 1,425,052 hooks. Compared to the first quarter of 2003, this is a 18.0% decrease in the number of hooks set. The average number of hooks per set decreased for the second time in a row from 2,485 to 2,440 (-1.8%). Probably caused by the fact that the biggest longliners have leaved the American Samoa fishing grounds.

Albacore continued to dominate the catch with only 9,398 fish caught in the first quarter of 2005. This is a dramatic decrease by 47.6% of it's one year ago value (17,924 in 1st quarter 2004) this is also a decrease by 46.4% of the albacore catch for the 4th quarter of 2004. The total catch of all species decreased by 58.1% indicating a global rarity of the fish. Indeed catch of other tuna species all species decreased : Skipjack tuna catches decreased by 30.9%, yellow fin tuna decreased by 82.7, big eye tuna decreased by 82.8 %. Also the billfish catch decreased by 41.7 % and sharks by 47.3%, while mahi mahi catch increased by 86.3% and Wahoo catch increased by 11.4 %.

The global CPUE decreased by 39.5 %.

Albacore CPUE decreased by 37.6% of its previous quarter value and by 24.3% of its a year ago value to 6.59 fish per 1000 hooks in the first quarter of 2005. This is the all time lowest value observed for this species. The CPUE for all species, except for Mahi mahi and Wahoo which increased respectively by 169% and 61%, have decreased during this quarter. The CPUE for skipjack almost remain the same (-0.3%). Yellow fin tuna CPUE decreased by 75%, Big eye CPUE decreased by 75%, Billfish CPUE decreased by 16% and sharks CPUE decreased by 24%.

Western Pacific Logbook Summary Report for 1st Quarter 2005

Vessels landing or based in American Samoa
Based on Date of Haul for all areas

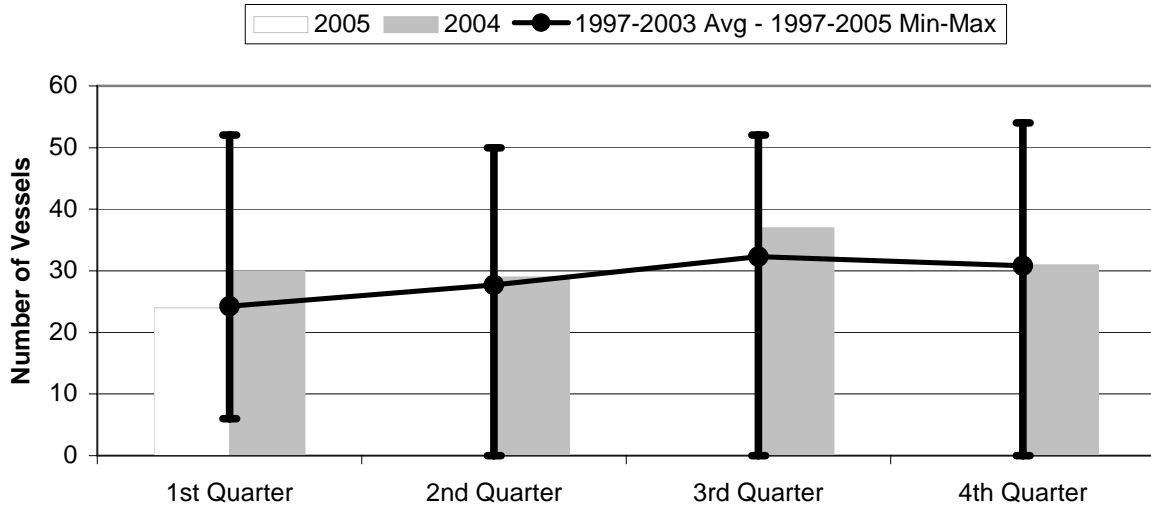
TRIP INFORMATION

Number of Vessels:	24
Number of Sets:	643
1000's of Hooks Set:	1425
Number of Lightsticks Used:	30

CATCH INFORMATION

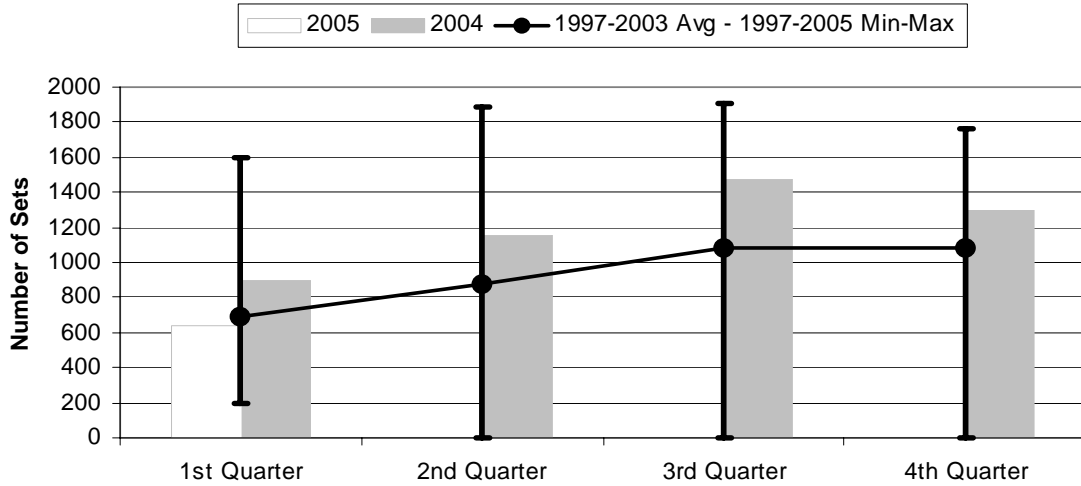
Species	# Caught	# Kept	# Finned	# Caught/ 1000 Hooks
BILLFISH				
Black marlin	1	1		0.00
Blue marlin	234	97		0.16
Striped Marlin	37	16		0.03
Sailfish	34	8		0.02
Spearfish	21	10		0.01
Swordfish	33	29		0.02
TOTALS	360	161		0.25
SHARKS				
Blue shark	543	1		0.38
Mako Shark	19	0		0.01
Thresher Shark	35	0		0.02
White-Tip Shark	120	0		0.08
Other Pelagic Sharks	30	0		0.02
TOTALS	747	1		0.52
TUNA				
Albacore	9398	9295		6.59
Bigeye Tuna	461	443		0.32
Bluefin Tuna	27	27		0.02
Skipjack Tuna	2044	1779		1.43
Yellowfin Tuna	924	890		0.65
TOTALS	12854	12434		9.02
OTHER PELAGICS				
Mahimahi	395	353		0.28
Moonfish	85	57		0.06
Oilfish	438	1		0.31
Pomfret	54	31		0.04
Wahoo	2146	2083		1.51
TOTALS	3118	2525		2.19
NON-PMUS				
Other Pelagic Fish	36	17		0.03
TOTALS	36	17		0.03

Figure 1. American Samoa Longline Vessels Submitting Logs by Quarter for



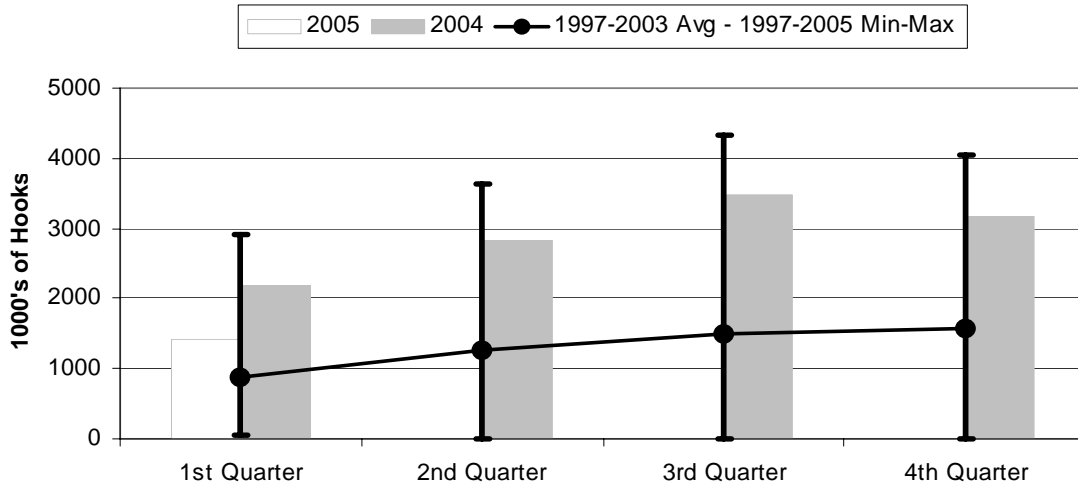
	1st Quarter	2nd Quarter	3rd Quarter	4th Quarter
2005	24	0	0	0
2004	30	29	37	31
1997-2005 Max	52	50	52	54
1997-2003 Avg	24.3	27.7	32.3	30.9
1997-2005 Min	6	0	0	0

Figure 2. Number of Sets by American Samoa Longline Vessels by Quarter for



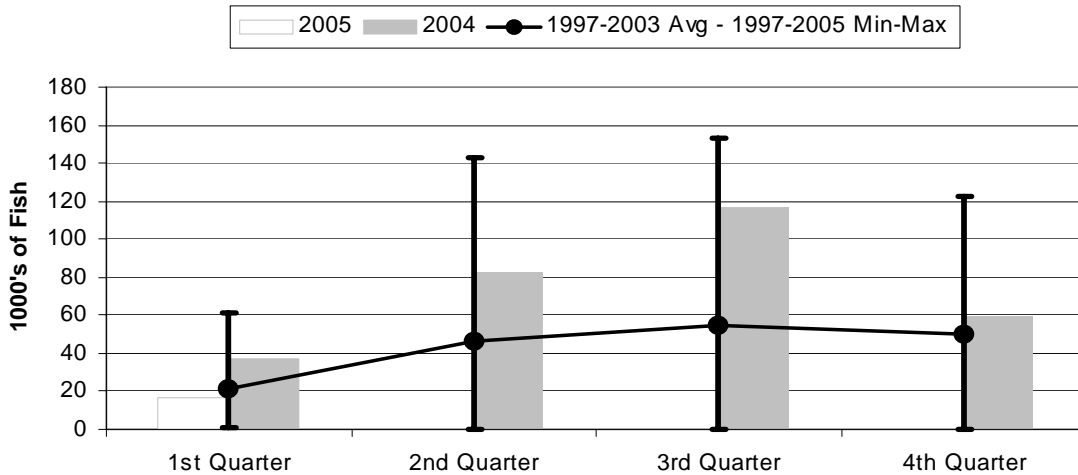
	1st Quarter	2nd Quarter	3rd Quarter	4th Quarter
2005	643	0	0	0
2004	894	1158	1474	1297
1997-2005 Max	1602	1886	1903	1758
1997-2003 Avg	689	878	1081	1083
1997-2005 Min	192	0	0	0

Figure 3. Number of Hooks Set by the American Samoa Longline Fleet by Quarter for



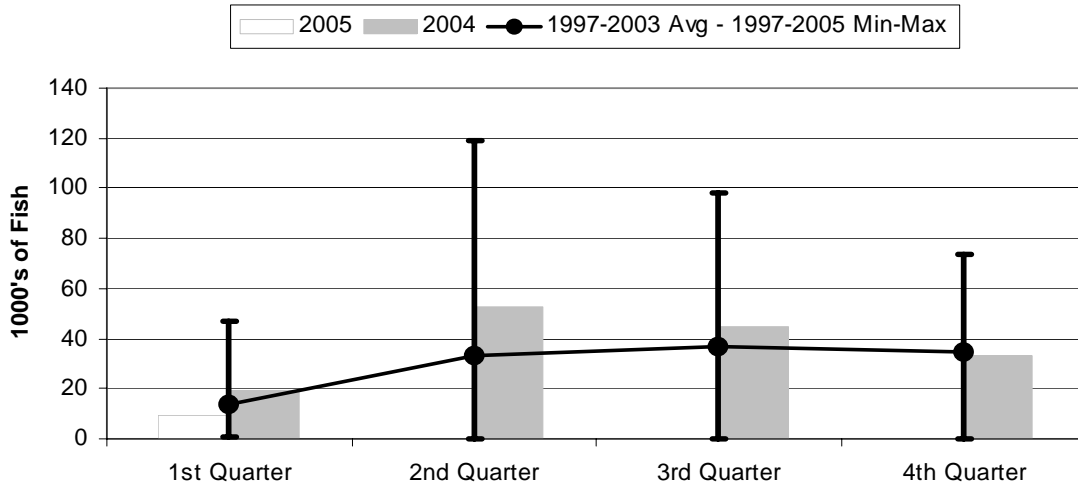
	1st Quarter	2nd Quarter	3rd Quarter	4th Quarter
2005	1425	0	0	0
2004	2195	2837	3475	3165
1997-2005 Max	2902	3629	4342	4044
1997-2003 Avg	880	1265	1505	1565
1997-2005 Min	41	0	0	0

Figure 4. American Samoa Longline Total Catch (All Species) by Quarter for



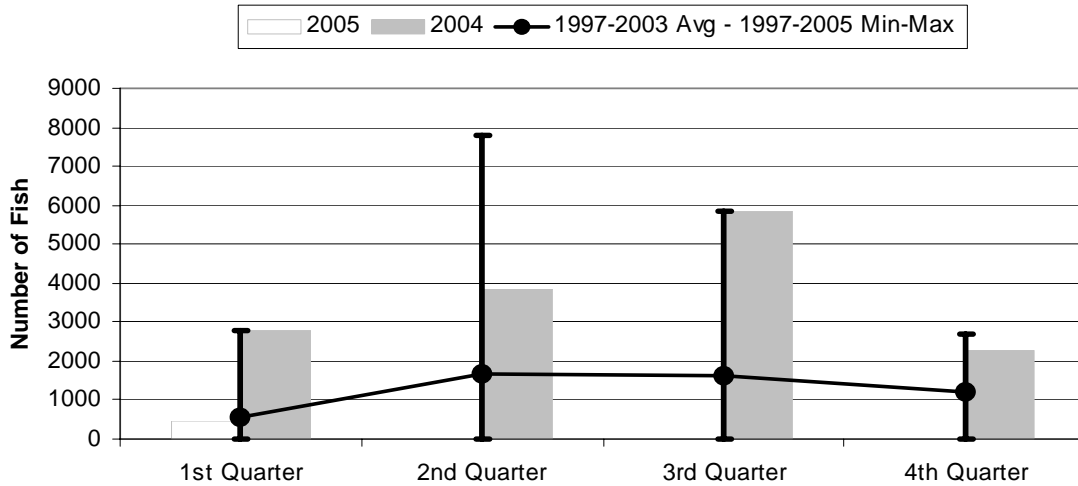
	1st Quarter	2nd Quarter	3rd Quarter	4th Quarter
2005	17.12	0.00	0.00	0.00
2004	36.74	82.81	116.57	59.13
1997-2003 Avg	21.04	46.27	54.29	50.09
1997-2005 Min	1.32	0.00	0.00	0.00
1997-2005 Max	61.24	142.60	153.30	122.34

Figure 5. American Samoa Longline Albacore Catch by Quarter for



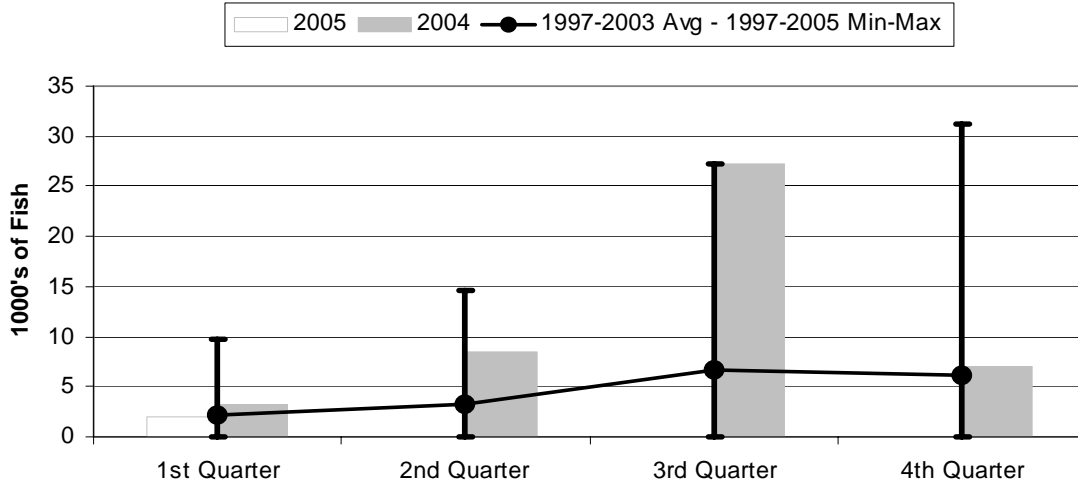
	1st Quarter	2nd Quarter	3rd Quarter	4th Quarter
2005	9.40	0.00	0.00	0.00
2004	19.17	52.89	45.03	33.45
1997-2005 Max	46.98	118.99	98.09	73.77
1997-2003 Avg	13.82	33.51	36.91	34.98
1997-2005 Min	0.94	0.00	0.00	0.00

Figure 6. American Samoa Longline Bigeye Tuna Catch by Quarter for



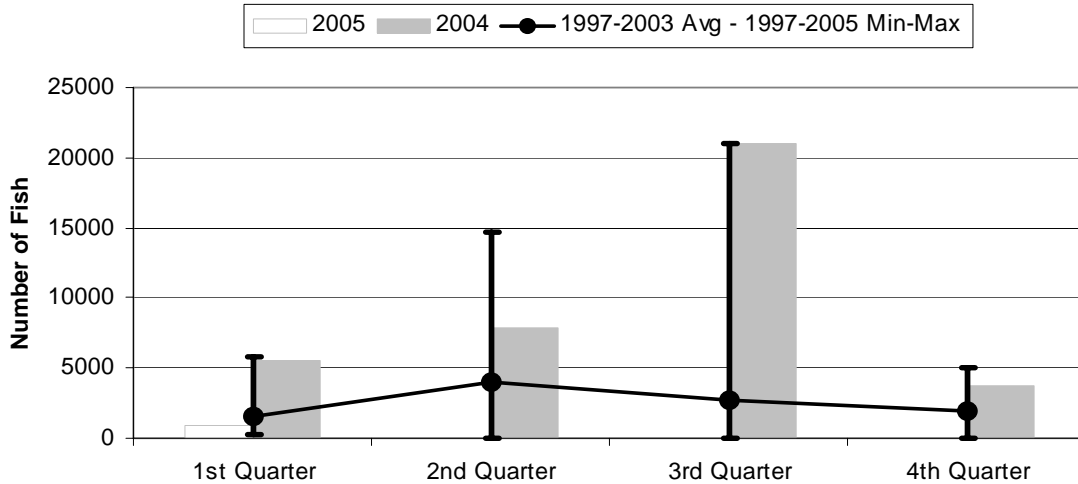
	1st Quarter	2nd Quarter	3rd Quarter	4th Quarter
2005	461	0	0	0
2004	2781	3833	5834	2270
1997-2005 Max	2781	7785	5834	2678
1997-2003 Avg	541	1691	1609	1186
1997-2005 Min	6	0	0	0

Figure 7. American Samoa Longline Skipjack Tuna Catch by Quarter for



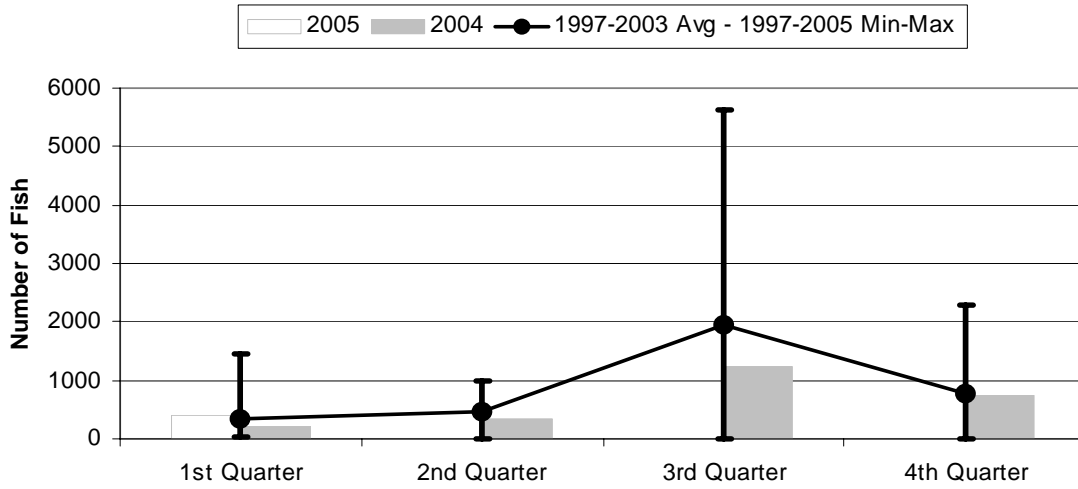
	1st Quarter	2nd Quarter	3rd Quarter	4th Quarter
2005	2.04	0.00	0.00	0.00
2004	3.16	8.40	27.23	7.08
1997-2005 Max	9.81	14.61	27.23	31.19
1997-2003 Avg	2.08	3.28	6.76	6.20
1997-2005 Min	0.00	0.00	0.00	0.00

Figure 8. American Samoa Longline Yellowfin Tuna Catch by Quarter for



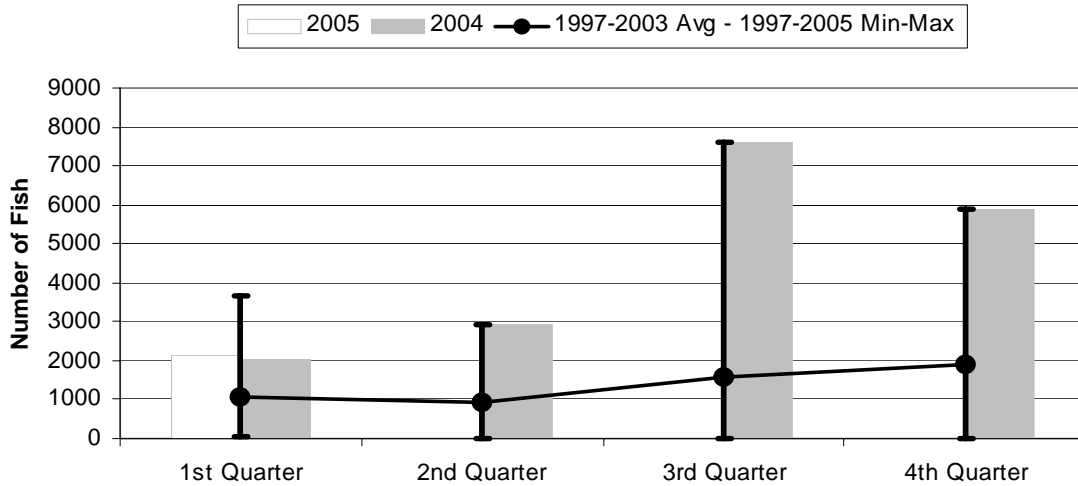
	1st Quarter	2nd Quarter	3rd Quarter	4th Quarter
2005	924	0	0	0
2004	5491	7812	20993	3753
1997-2005 Max	5848	14681	20993	5078
1997-2003 Avg	1602	4012	2732	1950
1997-2005 Min	213	0	0	0

Figure 9. American Samoa Mahimahi Catch by Quarter for



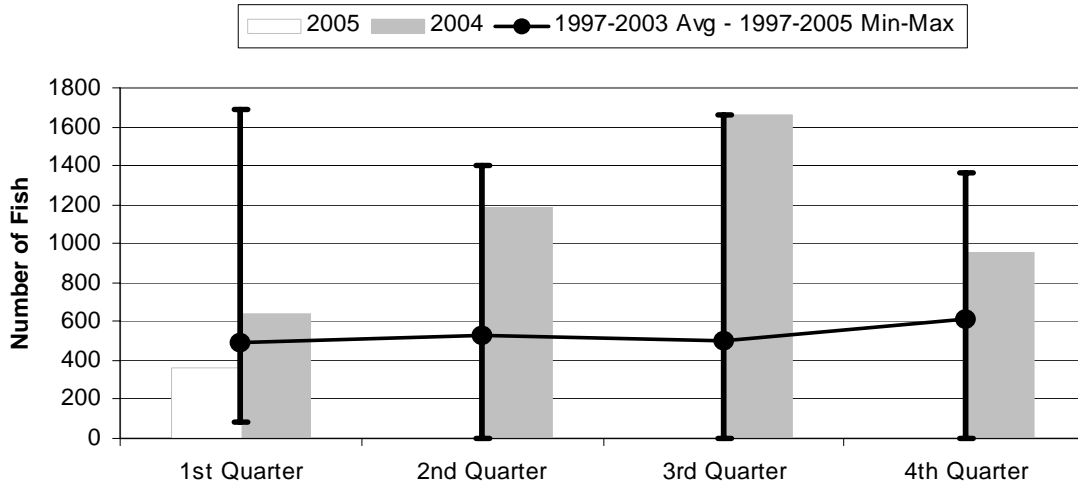
	1st Quarter	2nd Quarter	3rd Quarter	4th Quarter
2005	395	0	0	0
2004	214	348	1240	750
1997-2005 Max	1455	979	5642	2297
1997-2003 Avg	346	450	1951	773
1997-2005 Min	30	0	0	0

Figure 10. American Samoa Wahoo Catch by Quarter for



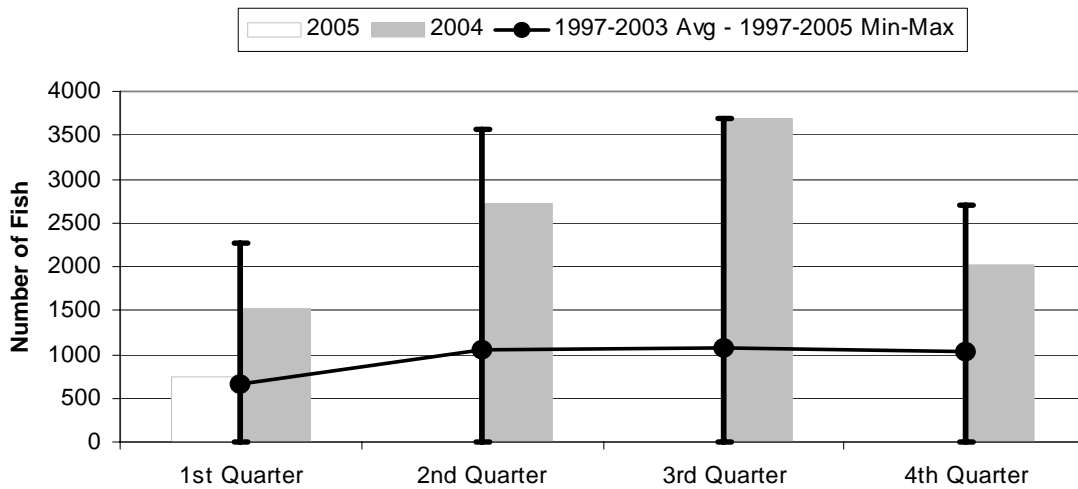
	1st Quarter	2nd Quarter	3rd Quarter	4th Quarter
2005	2146	0	0	0
2004	2024	2921	7629	5894
1997-2005 Max	3681	2921	7629	5894
1997-2003 Avg	1084	937	1594	1903
1997-2005 Min	27	0	0	0

Figure 11. American Samoa Billfish Catch by Quarter for



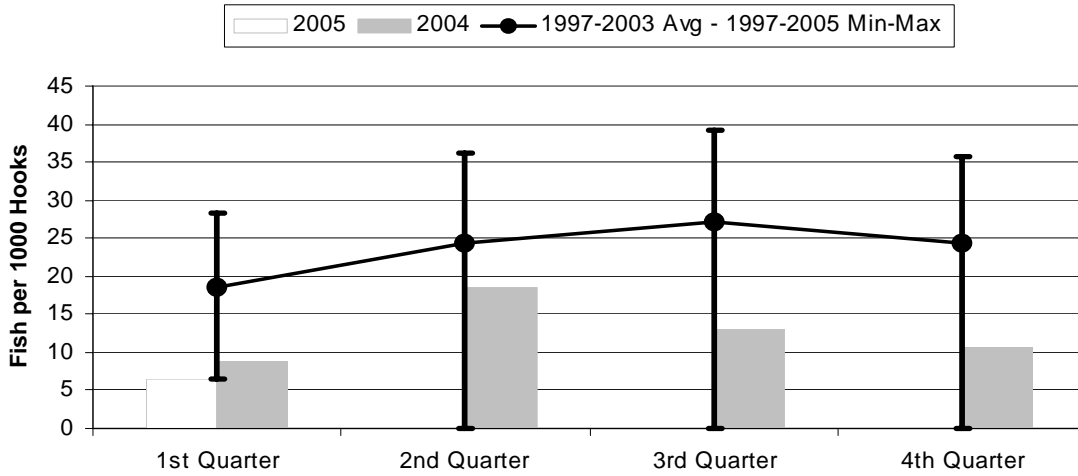
	1st Quarter	2nd Quarter	3rd Quarter	4th Quarter
2005	360	0	0	0
2004	636	1186	1663	956
1997-2005 Max	1692	1404	1663	1361
1997-2003 Avg	491	533	500	612
1997-2005 Min	83	0	0	0

Figure 12. American Samoa Shark Catch by Quarter for



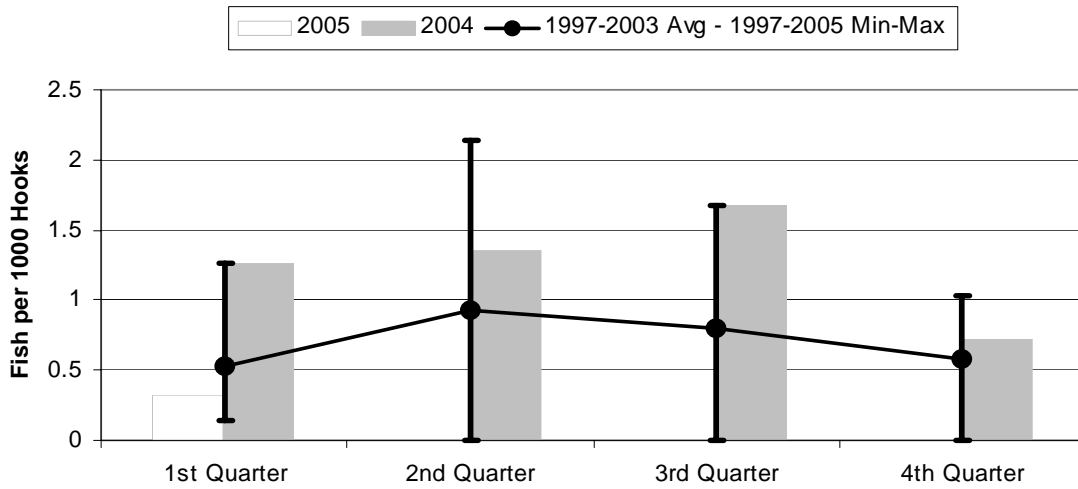
	1st Quarter	2nd Quarter	3rd Quarter	4th Quarter
2005	747	0	0	0
2004	1522	2729	3686	2017
1997-2005 Max	2262	3562	3686	2695
1997-2003 Avg	659	1062	1066	1030
1997-2005 Min	5	0	0	0

Figure 13. American Samoa Longline Albacore Catch/1000 Hooks by Quarter for



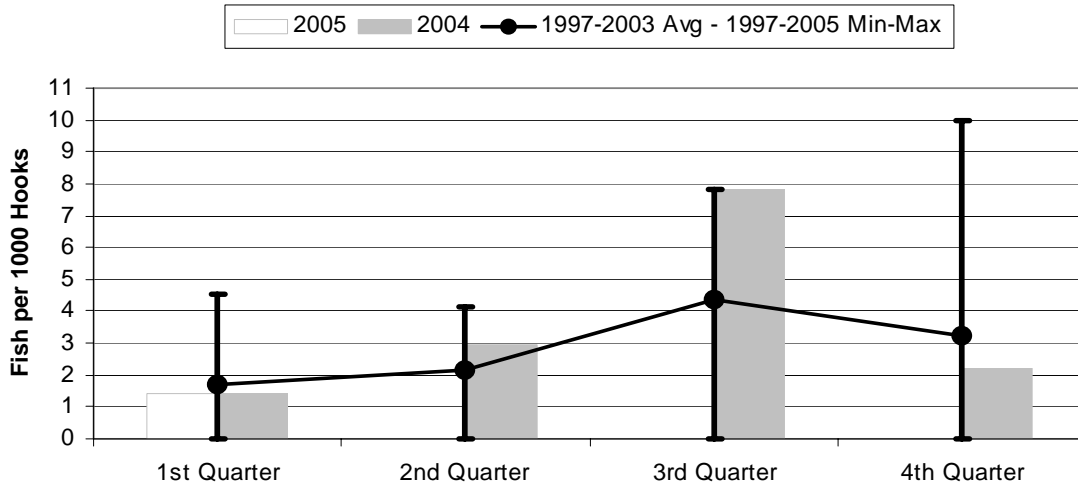
	1st Quarter	2nd Quarter	3rd Quarter	4th Quarter
2005	6.59	0.00	0.00	0.00
2004	8.73	18.64	12.96	10.57
1997-2005 Max	28.33	36.18	39.13	35.68
1997-2003 Avg	18.58	24.34	27.13	24.41
1997-2005 Min	6.59	0.00	0.00	0.00

Figure 14. American Samoa Longline Bigeye Tuna Catch/1000 Hooks by Quarter for



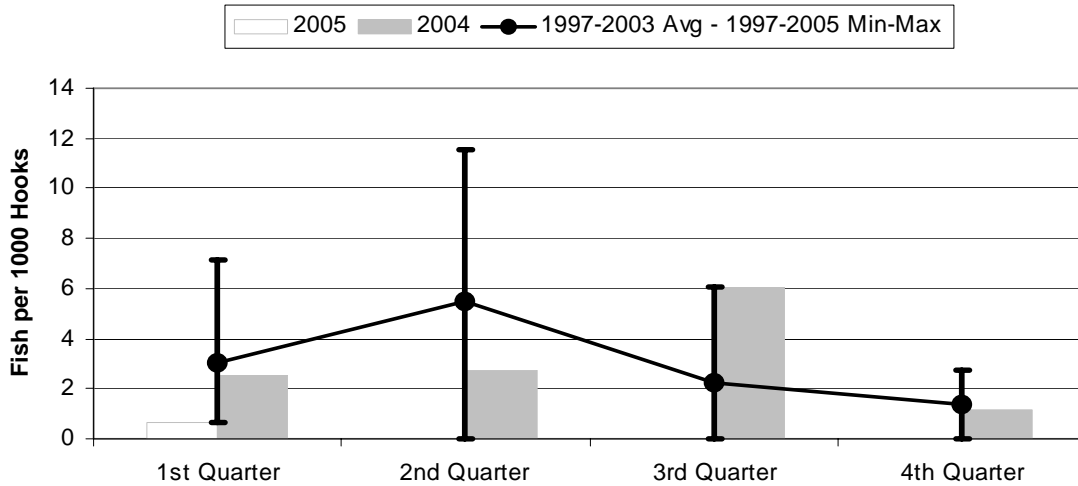
	1st Quarter	2nd Quarter	3rd Quarter	4th Quarter
2005	0.324	0.000	0.000	0.000
2004	1.267	1.351	1.679	0.717
1997-2005 Max	1.267	2.145	1.679	1.030
1997-2003 Avg	0.527	0.924	0.805	0.578
1997-2005 Min	0.146	0.000	0.000	0.000

Figure 15. American Samoa Longline Skipjack Tuna Catch/1000 Hooks by Quarter for



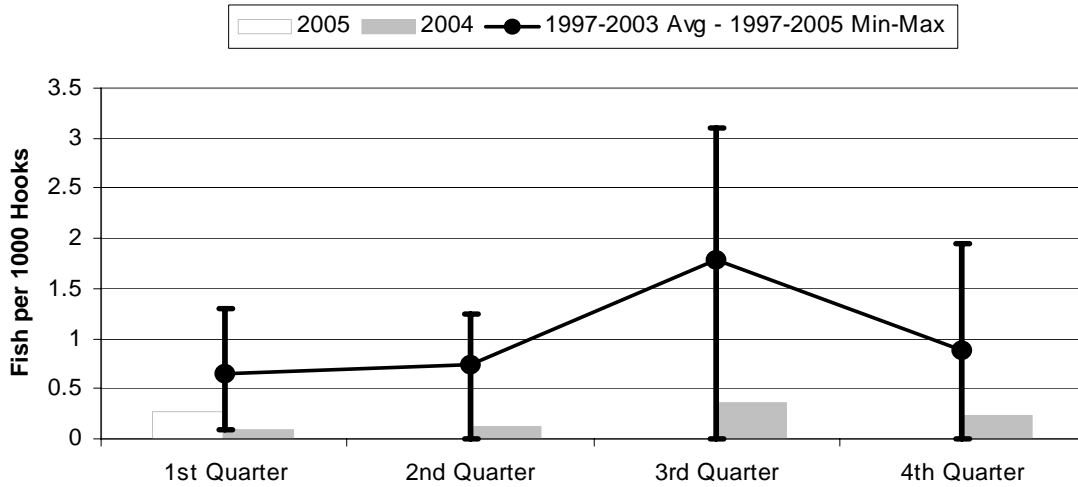
	1st Quarter	2nd Quarter	3rd Quarter	4th Quarter
2005	1.434	0.000	0.000	0.000
2004	1.440	2.960	7.838	2.236
1997-2005 Max	4.556	4.155	7.838	9.975
1997-2003 Avg	1.701	2.146	4.356	3.249
1997-2005 Min	0.000	0.000	0.000	0.000

Figure 16. American Samoa Yellowfin Tuna Catch/1000 Hooks by Quarter for



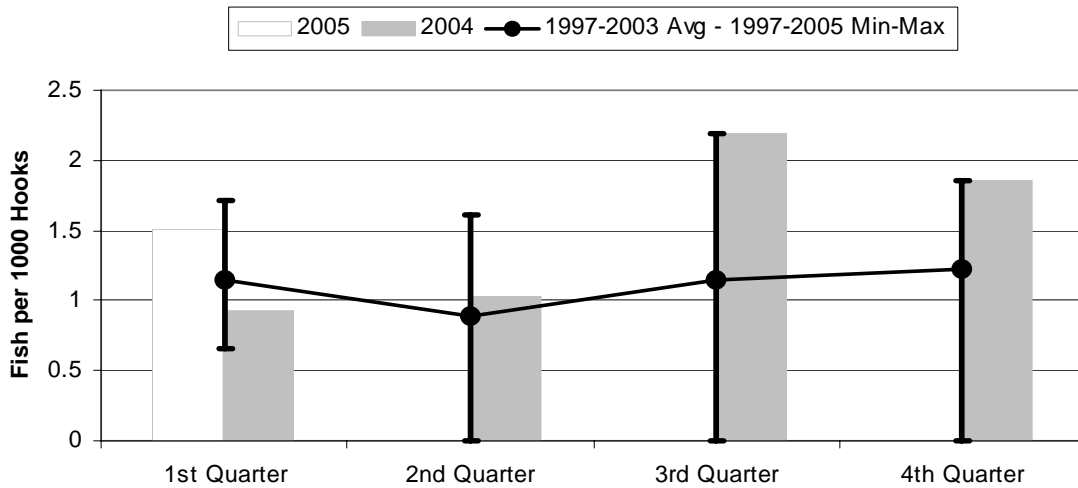
	1st Quarter	2nd Quarter	3rd Quarter	4th Quarter
2005	0.648	0.000	0.000	0.000
2004	2.502	2.754	6.042	1.186
1997-2005 Max	7.139	11.57	6.042	2.759
1997-2003 Avg	3.044	5.488	2.234	1.376
1997-2005 Min	0.648	0.000	0.000	0.000

Figure 17. American Samoa Longline Mahimahi Catch/1000 Hooks by Quarter for



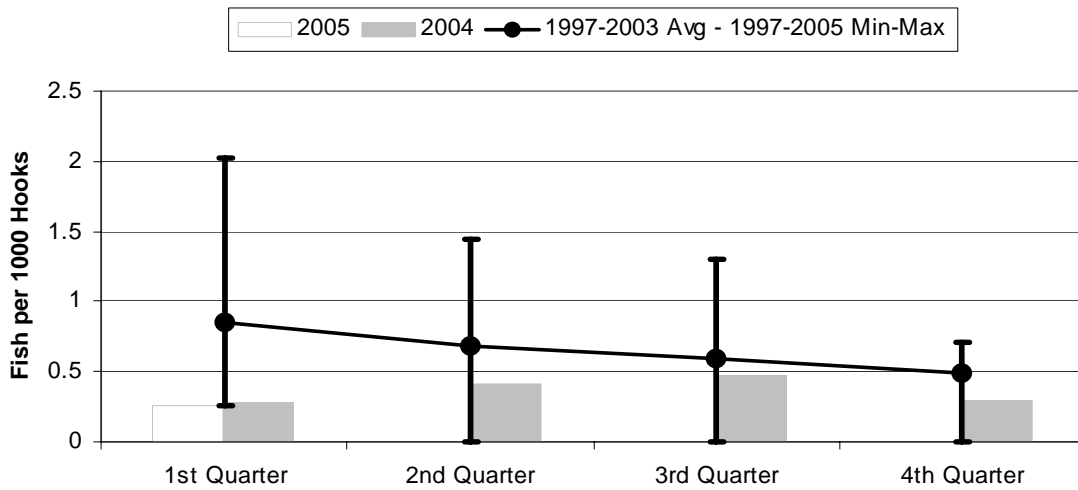
	1st Quarter	2nd Quarter	3rd Quarter	4th Quarter
2005	0.277	0.000	0.000	0.000
2004	0.098	0.123	0.357	0.237
1997-2005 Max	1.305	1.248	3.106	1.940
1997-2003 Avg	0.651	0.748	1.789	0.888
1997-2005 Min	0.091	0.000	0.000	0.000

Figure 18. American Samoa Wahoo Catch/1000 Hooks by Quarter for



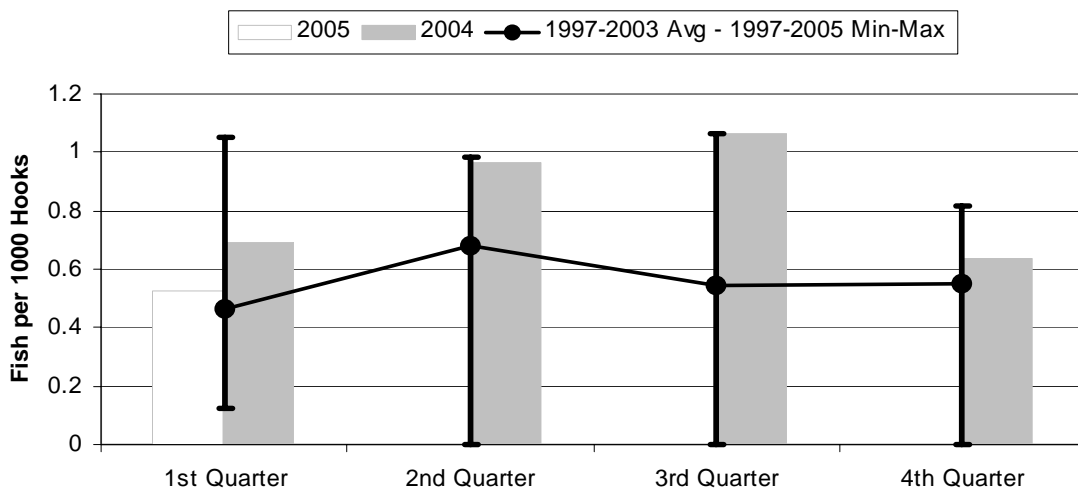
	1st Quarter	2nd Quarter	3rd Quarter	4th Quarter
2005	1.506	0.000	0.000	0.000
2004	0.922	1.030	2.196	1.862
1997-2003 Avg	1.146	0.891	1.150	1.218
1997-2005 Max	1.710	1.617	2.196	1.862
1997-2005 Min	0.657	0.000	0.000	0.000

Figure 19. American Samoa Billfish Catch/1000 Hooks by Quarter for



	1st Quarter	2nd Quarter	3rd Quarter	4th Quarter
2005	0.253	0.000	0.000	0.000
2004	0.290	0.418	0.479	0.302
1997-2005 Max	2.019	1.439	1.298	0.713
1997-2003 Avg	0.854	0.682	0.599	0.488
1997-2005 Min	0.253	0.000	0.000	0.000

Figure 20. American Samoa Shark Catch/1000 Hooks by Quarter for



	1st Quarter	2nd Quarter	3rd Quarter	4th Quarter
2005	0.524	0.000	0.000	0.000
2004	0.694	0.962	1.061	0.637
1997-2005 Max	1.051	0.986	1.061	0.819
1997-2003 Avg	0.462	0.681	0.546	0.551
1997-2005 Min	0.122	0.000	0.000	0.000