

**Department of Marine & Wildlife Resources**  
**Report on the NMFS Logbook Program for the**  
**American Samoa Longline Fishery**  
**January-March 2004**

May 28, 2004

The Department of Marine and Wildlife Resources (DMWR) began processing the longline logbook data locally at the beginning of the year 2000 and very significant progress has been made to improve compliance of reporting requirements in the American Samoa longline fishery. Logbook data in this report are summarized by date of haul as shown in the following table. All submitted logbook data for longline activities during the first quarter of 2004 have been processed and are reported in this preliminary report. As of April 11, 2003, the documented delinquency rate according to the DMWR Daily Effort Census and Delinquency Reporting System for the first quarter of 2004 was 13.64%. The summary data in this report are considered preliminary and subject to change as additional delinquent data are received and processed.

According to the Daily Effort Census, 37 vessels were engaged in longline fishing during the first quarter of 2004 and 27 of these vessels turned in some or all of their longline logs for sets made during the quarter. These 27 vessels made 785 sets and set 1,929,401 hooks. Compared to the first quarter of 2002, this is less than half of the number of sets made with a 36% decrease in the number of hooks set. The average number of hooks per set increased from 1,812 to 2,347. caused primarily by the relative increase in the activity of the large vessels in the fleet which set more hooks per set than the smaller alia fleet.

Albacore continued to dominate the catch with only 17,004 fish caught in the first quarter of 2004. This is a dramatic decrease to only 31% of the 69,200 albacore caught in the fourth quarter of 2002 and to only 46% of the albacore catch for the first quarter of 2002. The total catch of all species only decreased by 34% indicating a diversification away from an almost all albacore catch. Indeed catches of other species increased dramatically with skipjack tuna catches increasing by 149%, yellowfin tuna increasing by 123%, bigeye tuna increasing by 53% and mahimahi increasing by 353%. The catch of wahoo only increased by 18%, the catch of billfish decreased by 55% and sharks remained the same.

Albacore CPUE decreased to 52% of its previous quarter value and to 72% of its a year ago value to 8.81 fish per 1000 hooks in the first quarter of 2004. This is close to the all time low of 11.78 fish per 1000 hooks for this species. The CPUE for all other species, except for billfishes which decreased by 41%, increased dramatically over their year ago values. The CPUE for skipjack increased 288% from the quarter a year ago, yellowfin also increased by 288% and bigeye tuna increased by 139% compared to last year. The catch rates of mahimahi, wahoo and sharks all increased dramatically compared to the first quarter of 2002 indicating that species other than albacore are being targeted more and more.

## Western Pacific Logbook Summary Report for 1st Quarter 2004

Vessels landing or based in American Samoa

Based on Date of Haul for all areas

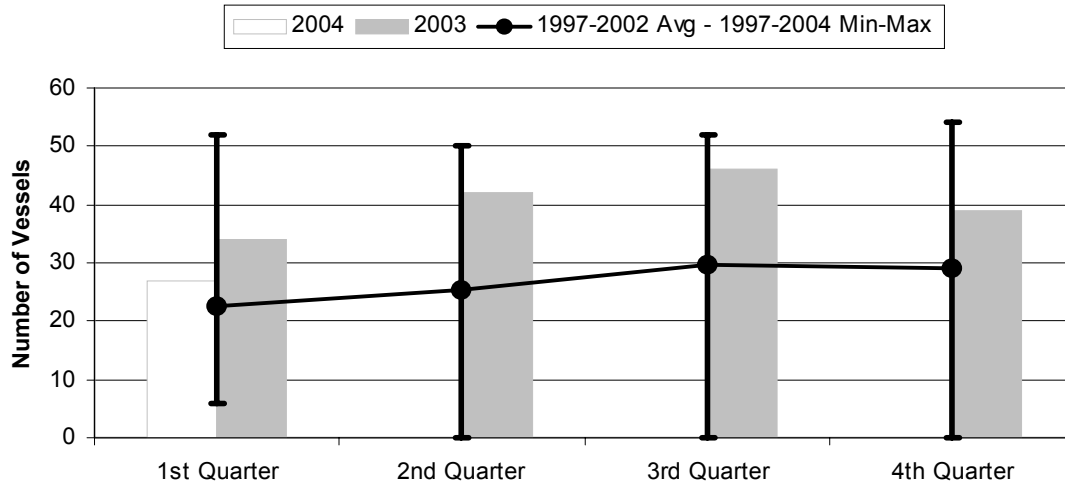
### TRIP INFORMATION

Number of Vessels:	27
Number of Sets:	785
1000's of Hooks Set:	1929
Number of Lightsticks Used:	160

### CATCH INFORMATION

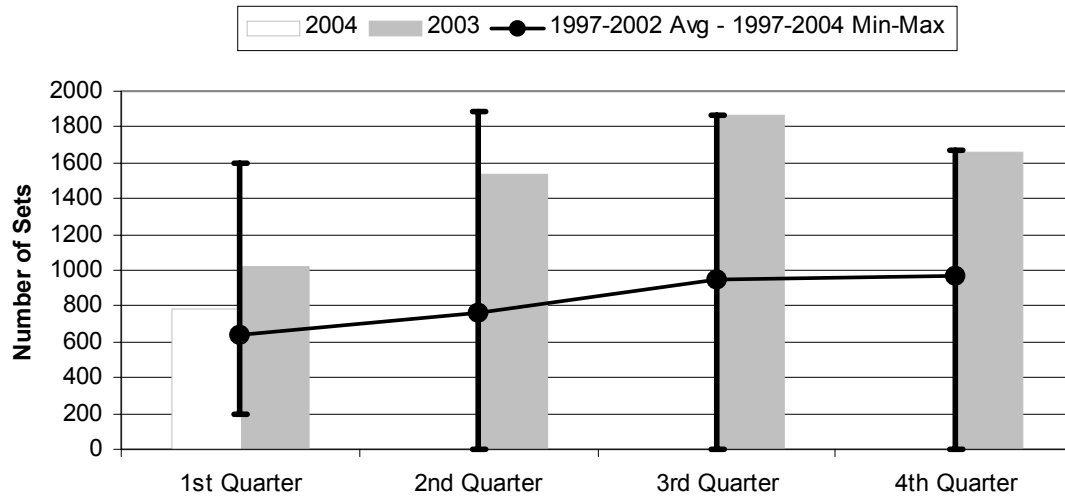
<b>Species</b>	<b># Caught</b>	<b># Kept</b>	<b># Finned</b>	<b># Caught/ 1000 Hooks</b>
<b>BILLFISH</b>				
Blue marlin	429	70		0.22
Striped Marlin	13	9		0.01
Sailfish	62	3		0.03
Spearfish	55	4		0.03
Swordfish	54	29		0.03
<b>TOTALS</b>	<b>613</b>	<b>115</b>		<b>0.32</b>
<b>SHARKS</b>				
Blue shark	1054	1		0.55
Mako Shark	61	0		0.03
Thresher Shark	85	0		0.04
White-Tip Shark	153	0		0.08
Other Sharks	17	0		0.01
<b>TOTALS</b>	<b>1370</b>	<b>1</b>		<b>0.71</b>
<b>TUNA</b>				
Albacore	17004	16879		8.81
Bigeye Tuna	2570	2504		1.33
Bluefin Tuna	2	2		0.00
Skipjack Tuna	2930	2702		1.52
Yellowfin Tuna	5187	5113		2.69
<b>TOTALS</b>	<b>27693</b>	<b>27200</b>		<b>14.35</b>
<b>OTHER PELAGICS</b>				
Mahimahi	207	163		0.11
Moonfish	136	31		0.07
Oilfish	1264	12		0.66
Pomfret	88	48		0.05
Wahoo	1854	1813		0.96
<b>TOTALS</b>	<b>3549</b>	<b>2067</b>		<b>1.84</b>
<b>NON-PMUS</b>				
Other Pelagic Fish	48	14		0.02
<b>TOTALS</b>	<b>48</b>	<b>14</b>		<b>0.02</b>

**Figure 1. American Samoa Longline Vessels Submitting Logs by Quarter for**



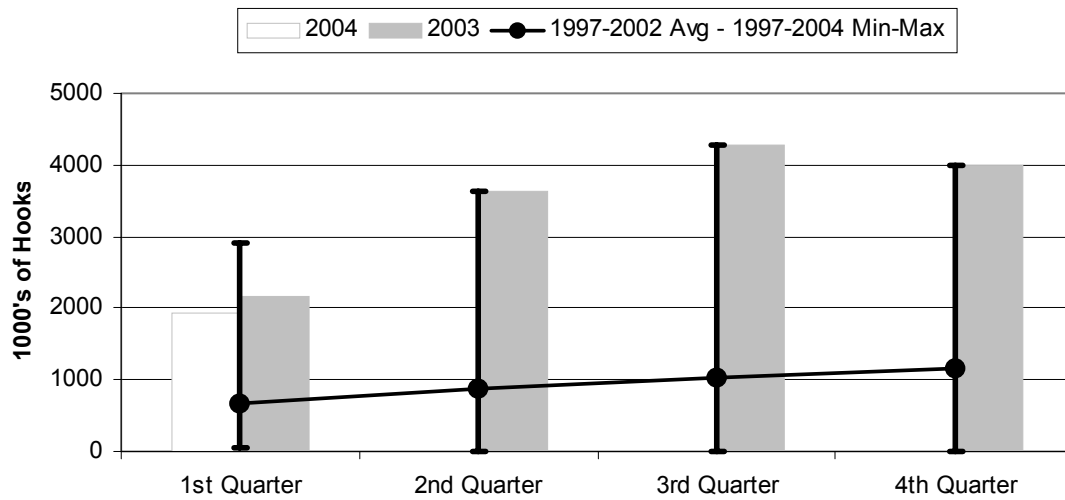
	1st Quarter	2nd Quarter	3rd Quarter	4th Quarter
2004	27	0	0	0
2003	34	42	46	39
1997-2004 Max	52	50	52	54
1997-2002 Avg	22.7	25.3	29.8	29.0
1997-2004 Min	6	0	0	0

**Figure 2. Number of Sets by American Samoa Longline Vessels by Quarter for**



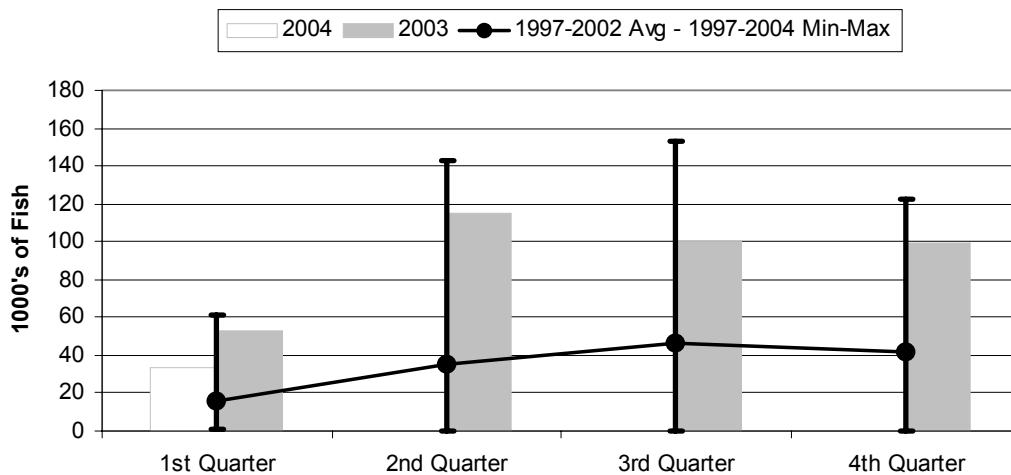
	1st Quarter	2nd Quarter	3rd Quarter	4th Quarter
2004	785	0	0	0
2003	1018	1541	1862	1662
1997-2004 Max	1602	1886	1862	1665
1997-2002 Avg	635	767	944	971
1997-2004 Min	192	0	0	0

**Figure 3. Number of Hooks Set by the American Samoa Longline Fleet by Quarter for**



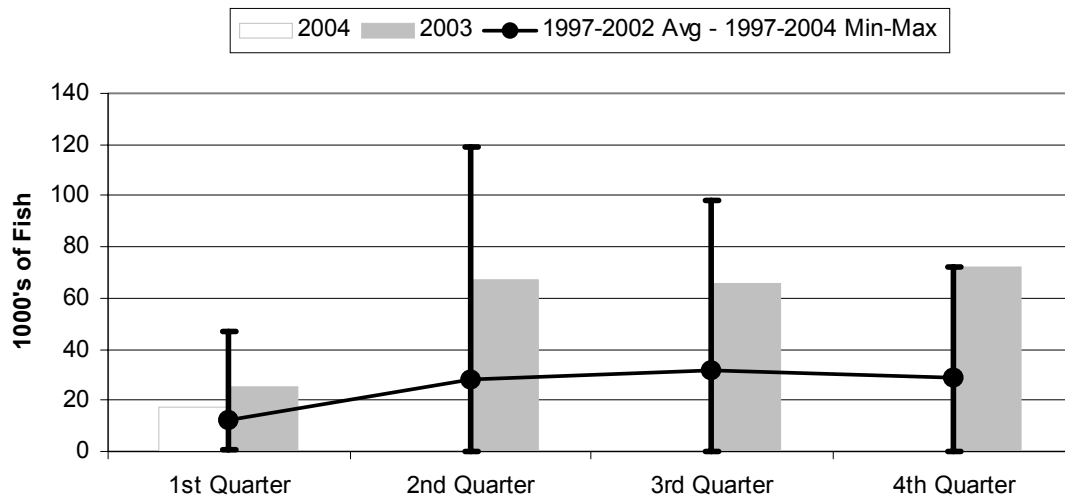
	1st Quarter	2nd Quarter	3rd Quarter	4th Quarter
2004	1929	0	0	0
2003	2153	3629	4267	3983
1997-2004 Max	2904	3629	4267	3983
1997-2002 Avg	668	872	1032	1151
1997-2004 Min	41	0	0	0

**Figure 4. American Samoa Longline Total Catch (All Species) by Quarter for**



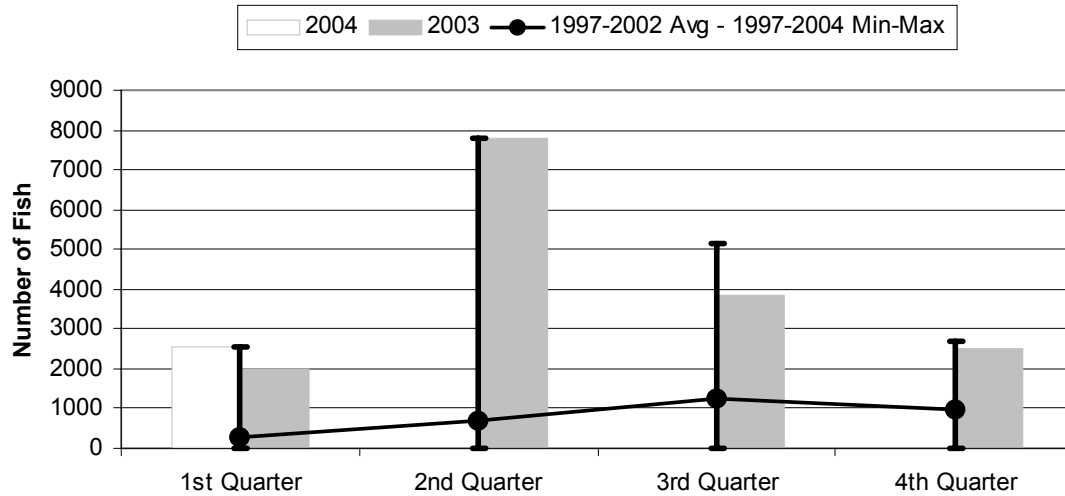
	1st Quarter	2nd Quarter	3rd Quarter	4th Quarter
2004	33.27	0.00	0.00	0.00
2003	52.76	114.75	100.46	99.56
1997-2004 Max	61.24	142.60	153.30	122.34
1997-2002 Avg	15.75	34.86	46.47	41.47
1997-2004 Min	1.32	0.00	0.00	0.00

**Figure 5. American Samoa Longline Albacore Catch by Quarter for**



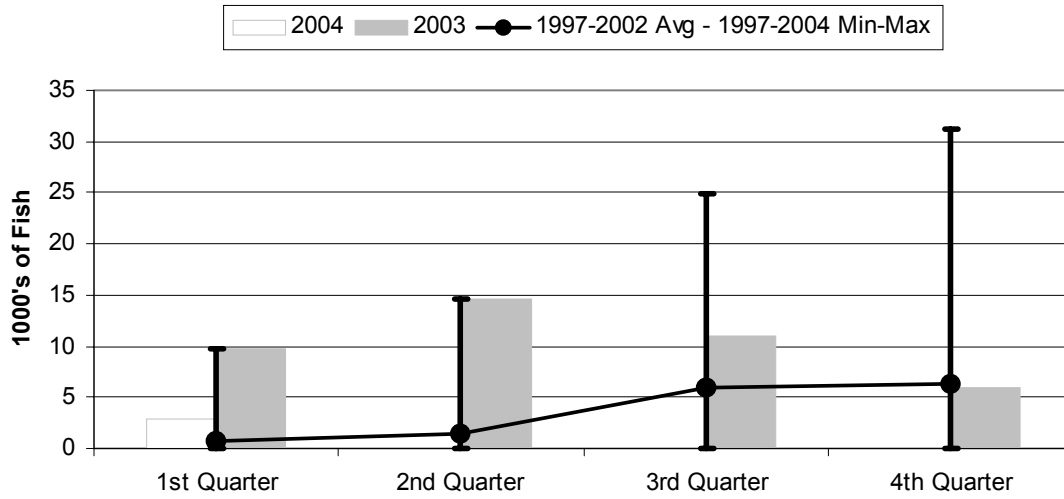
	1st Quarter	2nd Quarter	3rd Quarter	4th Quarter
2004	17.00	0.00	0.00	0.00
2003	25.22	67.35	65.46	72.06
1997-2004 Max	46.98	118.99	98.09	72.06
1997-2002 Avg	11.92	27.88	32.04	28.51
1997-2004 Min	0.94	0.00	0.00	0.00

**Figure 6. American Samoa Longline Bigeye Tuna Catch by Quarter for**



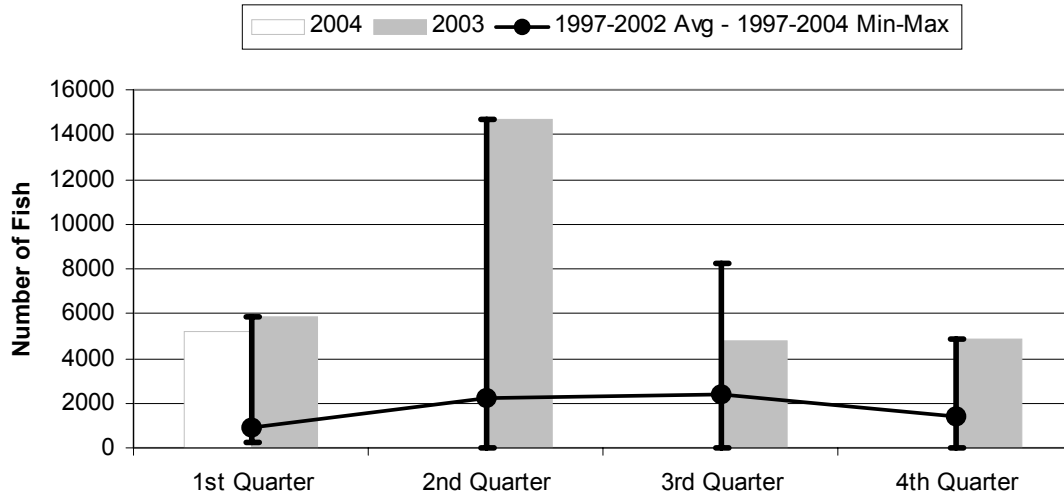
	1st Quarter	2nd Quarter	3rd Quarter	4th Quarter
2004	2570	0	0	0
2003	1993	7785	3831	2487
1997-2004 Max	2570	7785	5134	2678
1997-2002 Avg	299	675	1235	967
1997-2004 Min	6	0	0	0

**Figure 7. American Samoa Longline Skipjack Tuna Catch by Quarter for**



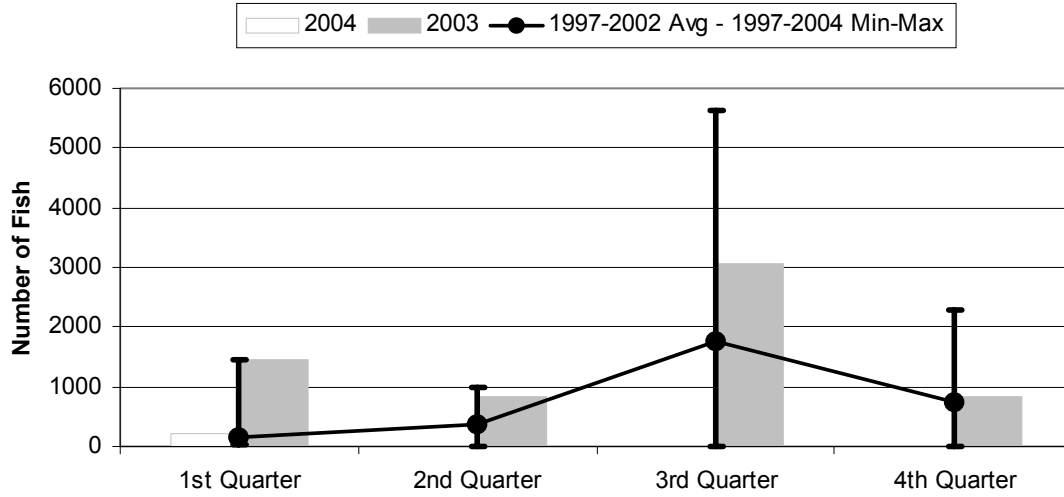
	1st Quarter	2nd Quarter	3rd Quarter	4th Quarter
2004	2.93	0.00	0.00	0.00
2003	9.81	14.61	11.09	5.98
1997-2004 Max	9.81	14.61	24.86	31.19
1997-2002 Avg	0.79	1.40	6.03	6.23
1997-2004 Min	0.00	0.00	0.00	0.00

**Figure 8. American Samoa Longline Yellowfin Tuna Catch by Quarter for**



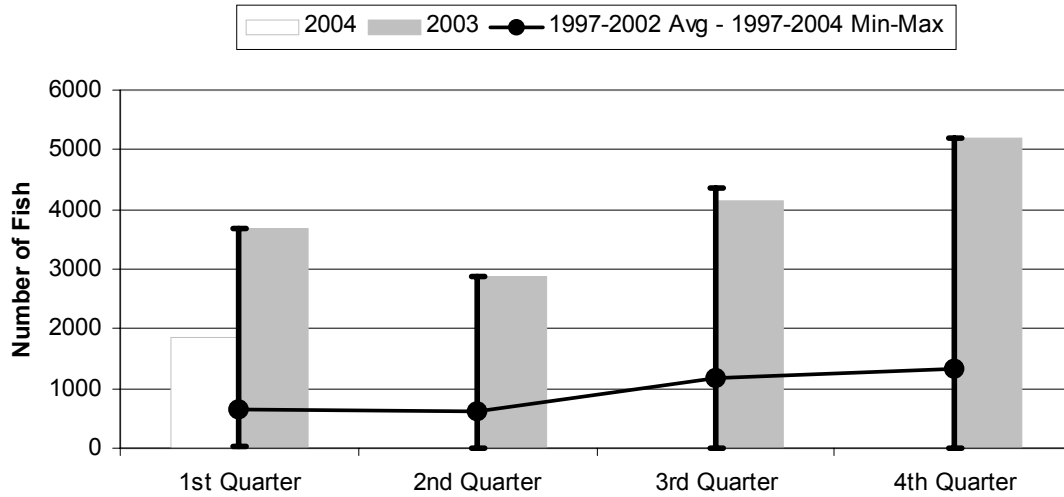
	1st Quarter	2nd Quarter	3rd Quarter	4th Quarter
2004	5187	0	0	0
2003	5848	14681	4793	4843
1997-2004 Max	5848	14681	8246	4843
1997-2002 Avg	894	2234	2385	1428
1997-2004 Min	213	0	0	0

**Figure 9. American Samoa Mahimahi Catch by Quarter for**



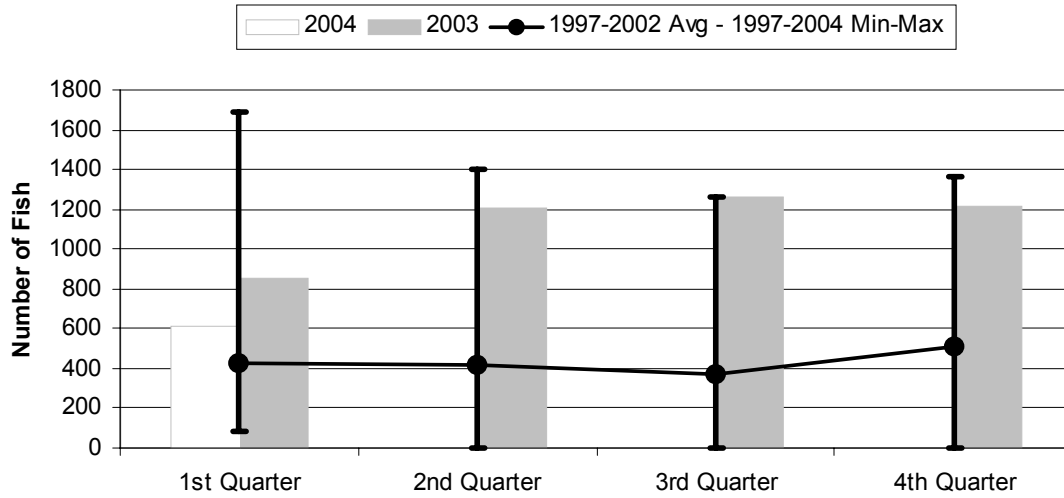
	1st Quarter	2nd Quarter	3rd Quarter	4th Quarter
2004	207	0	0	0
2003	1455	847	3076	825
1997-2004 Max	1455	979	5642	2297
1997-2002 Avg	161	384	1763	754
1997-2004 Min	30	0	0	0

**Figure 10. American Samoa Wahoo Catch by Quarter for**



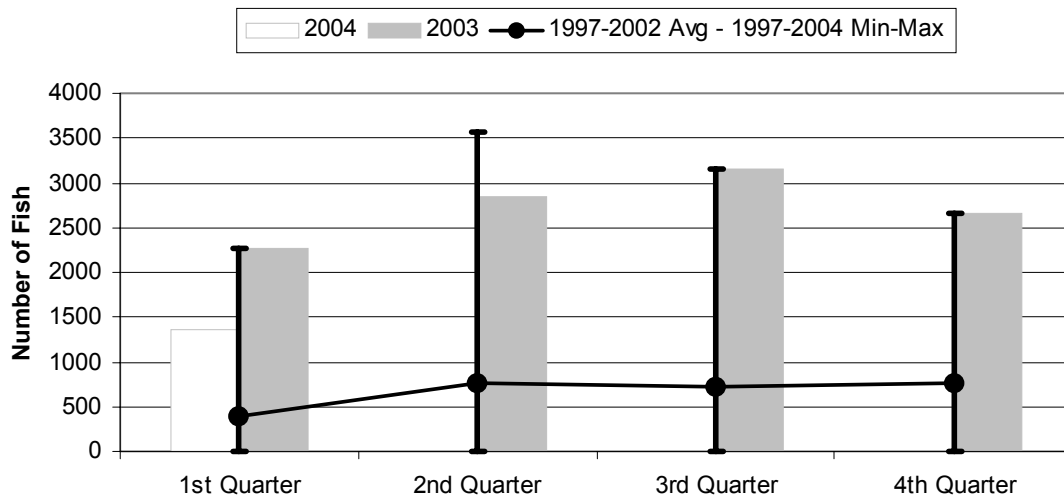
	1st Quarter	2nd Quarter	3rd Quarter	4th Quarter
2004	1854	0	0	0
2003	3681	2865	4143	5206
1997-2004 Max	3681	2865	4365	5206
1997-2002 Avg	652	615	1165	1331
1997-2004 Min	27	0	0	0

**Figure 11. American Samoa Billfish Catch by Quarter for**



	1st Quarter	2nd Quarter	3rd Quarter	4th Quarter
2004	613	0	0	0
2003	852	1207	1259	1211
1997-2004 Max	1692	1404	1259	1361
1997-2002 Avg	431	421	372	510
1997-2004 Min	83	0	0	0

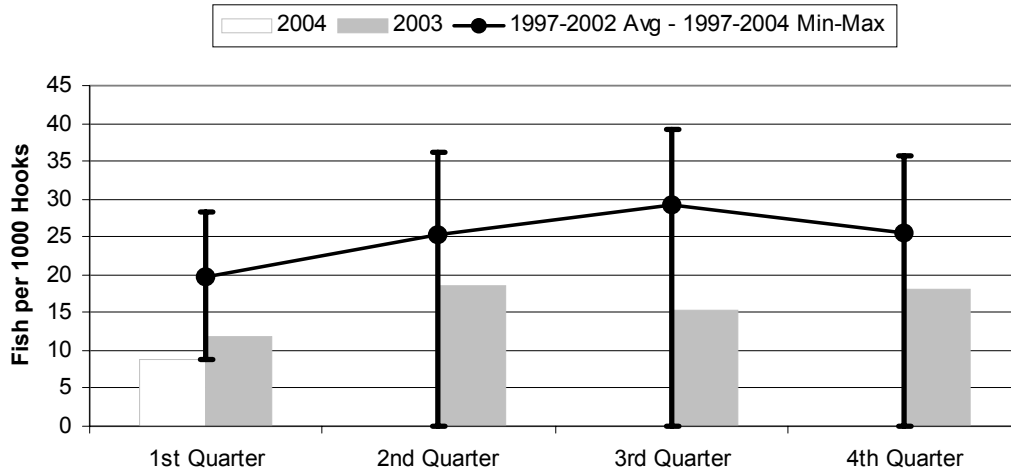
**Figure 12. American Samoa Shark Catch by Quarter for**



	1st Quarter	2nd Quarter	3rd Quarter	4th Quarter
2004	1370	0	0	0
2003	2262	2855	3153	2654
1997-2004 Max	2262	3562	3153	2654
1997-2002 Avg	392	763	718	753
1997-2004 Min	5	0	0	0

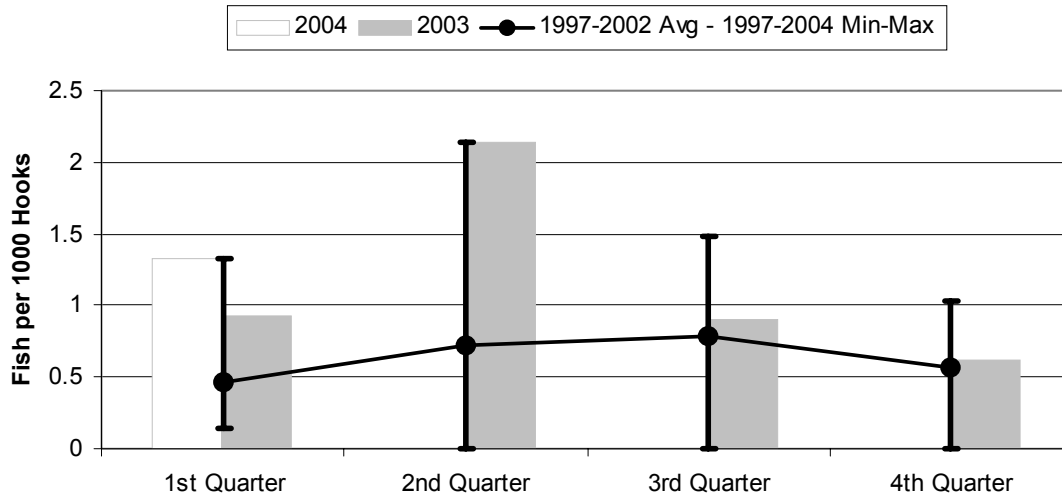


**Figure 13. American Samoa Longline Albacore Catch/1000 Hooks by Quarter for**



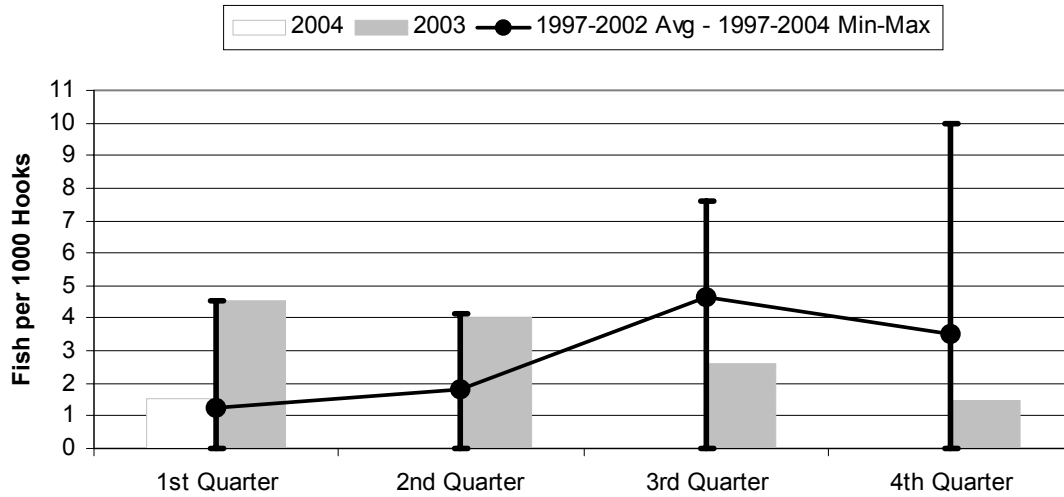
	1st Quarter	2nd Quarter	3rd Quarter	4th Quarter
2004	8.81	0.00	0.00	0.00
2003	11.72	18.56	15.34	18.09
1997-2004 Max	28.33	36.18	39.13	35.68
1997-2002 Avg	19.72	25.30	29.12	25.44
1997-2004 Min	8.81	0.00	0.00	0.00

**Figure 14. American Samoa Longline Bigeye Tuna Catch/1000 Hooks by Quarter for**



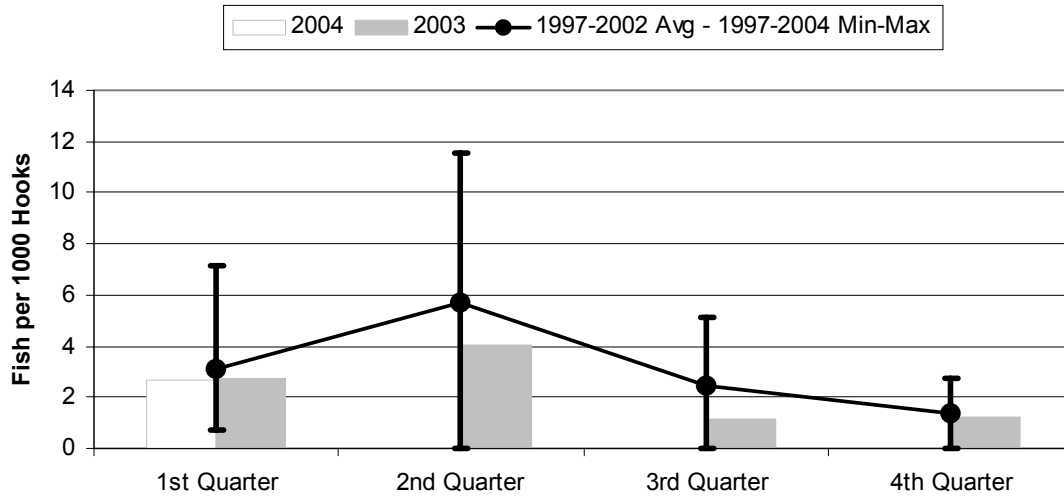
	1st Quarter	2nd Quarter	3rd Quarter	4th Quarter
2004	1.332	0.000	0.000	0.000
2003	0.926	2.145	0.898	0.624
1997-2004 Max	1.332	2.145	1.486	1.030
1997-2002 Avg	0.461	0.721	0.792	0.572
1997-2004 Min	0.146	0.000	0.000	0.000

**Figure 15. American Samoa Longline Skipjack Tuna Catch/1000 Hooks by Quarter for**



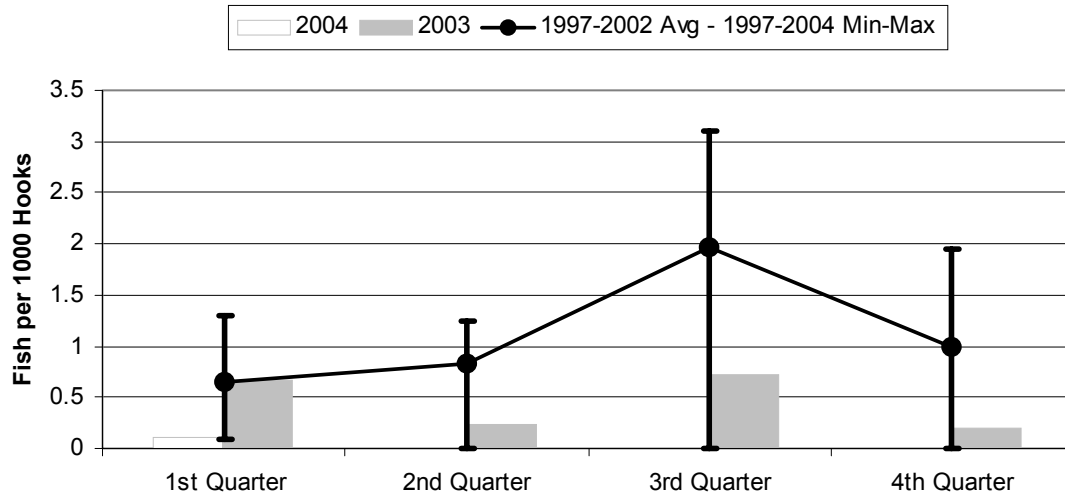
	1st Quarter	2nd Quarter	3rd Quarter	4th Quarter
2004	1.519	0.000	0.000	0.000
2003	4.556	4.025	2.598	1.502
1997-2004 Max	4.556	4.155	7.615	9.975
1997-2002 Avg	1.225	1.833	4.655	3.544
1997-2004 Min	0.000	0.000	0.000	0.000

**Figure 16. American Samoa Yellowfin Tuna Catch/1000 Hooks by Quarter for**



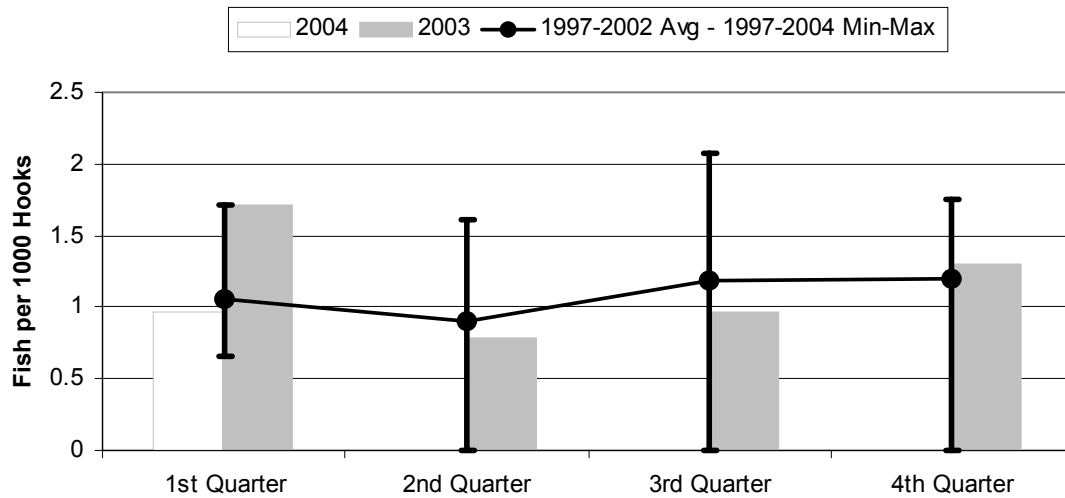
	1st Quarter	2nd Quarter	3rd Quarter	4th Quarter
2004	2.688	0.000	0.000	0.000
2003	2.716	4.046	1.123	1.216
1997-2004 Max	7.139	11.57	5.088	2.759
1997-2002 Avg	3.099	5.728	2.421	1.396
1997-2004 Min	0.695	0.000	0.000	0.000

**Figure 17. American Samoa Longline Mahimahi Catch/1000 Hooks by Quarter for**



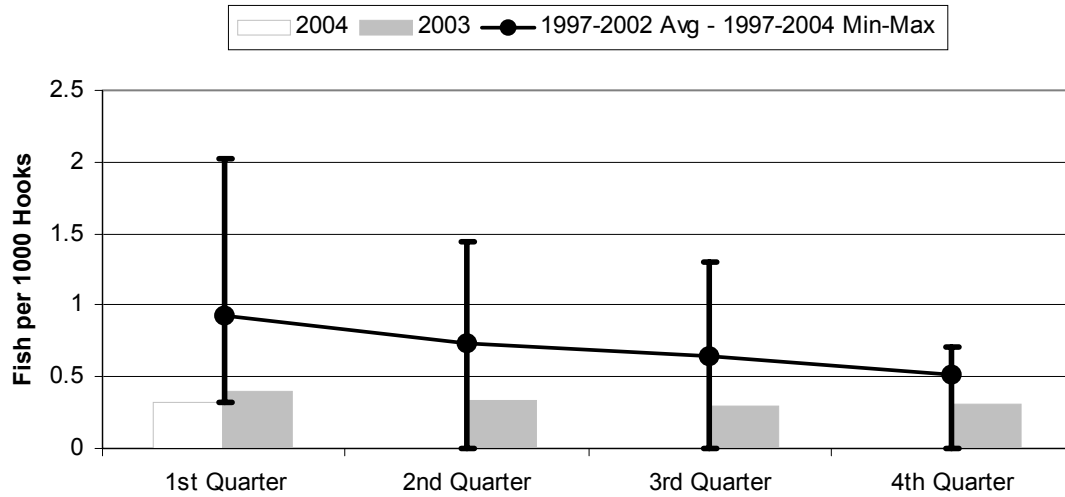
	1st Quarter	2nd Quarter	3rd Quarter	4th Quarter
2004	0.107	0.000	0.000	0.000
2003	0.676	0.233	0.721	0.207
1997-2004 Max	1.305	1.248	3.106	1.940
1997-2002 Avg	0.647	0.834	1.969	1.000
1997-2004 Min	0.091	0.000	0.000	0.000

**Figure 18. American Samoa Wahoo Catch/1000 Hooks by Quarter for**



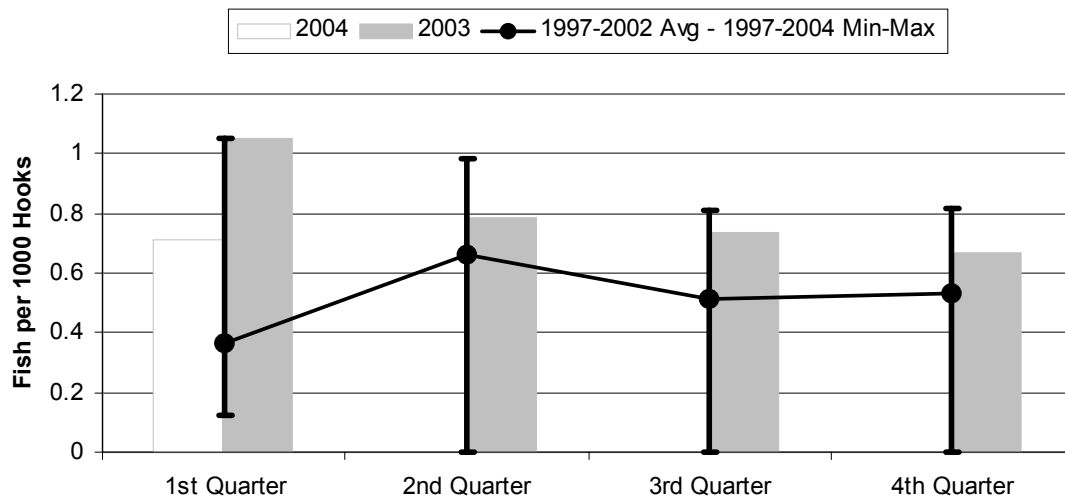
	1st Quarter	2nd Quarter	3rd Quarter	4th Quarter
2004	0.961	0.000	0.000	0.000
2003	1.710	0.790	0.971	1.307
1997-2004 Max	1.710	1.617	2.080	1.755
1997-2002 Avg	1.052	0.908	1.181	1.202
1997-2004 Min	0.657	0.000	0.000	0.000

**Figure 19. American Samoa Billfish Catch/1000 Hooks by Quarter for**



	1st Quarter	2nd Quarter	3rd Quarter	4th Quarter
2004	0.318	0.000	0.000	0.000
2003	0.396	0.333	0.295	0.304
1997-2004 Max	2.019	1.439	1.298	0.713
1997-2002 Avg	0.931	0.740	0.650	0.519
1997-2004 Min	0.318	0.000	0.000	0.000

**Figure 20. American Samoa Shark Catch/1000 Hooks by Quarter for**



	1st Quarter	2nd Quarter	3rd Quarter	4th Quarter
2004	0.710	0.000	0.000	0.000
2003	1.051	0.787	0.739	0.666
1997-2004 Max	1.051	0.986	0.810	0.819
1997-2002 Avg	0.364	0.663	0.515	0.532
1997-2004 Min	0.122	0.000	0.000	0.000