

**Department of Marine & Wildlife Resources**  
**Report on the NMFS Logbook Program for the**  
**American Samoa Longline Fishery**  
**January-March 2003**

September 15, 2003

The Department of Marine and Wildlife Resources (DMWR) began processing the longline logbook data locally at the beginning of the year 2000 and very significant progress has been made to improve compliance of reporting requirements in the American Samoa longline fishery. Logbook data in this report are summarized by date of haul as shown in the following table. All submitted logbook data for longline activities during the first quarter of 2003 have been processed and are reported in this preliminary report. As of September 15, 2003, the documented delinquency rate according to the DMWR Daily Effort Census and Delinquency Reporting System for the first quarter of 2003 was 23.97%. The summary data in this report are considered preliminary and subject to change as additional delinquent data are received and processed.

According to the Daily Effort Census, 43 vessels were engaged in longline fishing during the first quarter of 2003 and 33 of these vessels turned in some or all of their longline logs for sets made during the quarter. These 33 vessels made 920 sets and set 2,070,422 hooks. Compared to the first quarter of 2002, this is a 28.7% decrease in the number of hooks set. The average number of hooks per set increased from 1,813 to 2,250. caused primarily by the relative increase in the activity of the large vessels in the fleet which set more hooks per set than the smaller alia fleet.

Albacore continued to dominate the catch with only 23,739 fishes caught in the first quarter of 2003. This is a dramatic decrease to only 50.5% of the 46,980 Albacores caught in the first quarter of 2002 and to only 34.3% of the albacore catch for the fourth quarter of 2002 (69,210). The total catch of all species only decreased by 18.2% indicating a diversification away from an almost all albacore catch. Indeed catches of most others species increased dramatically with skipjack tuna catches increasing by 173.0%, yellow fin tuna increasing by 181.5%, big eye tuna increasing by 62.5%, and mahi-mahi increasing by 424.3%. The catch of Wahoo increased also by 30.8% and sharks by 11.3%. At the same time, the catch of billfish decreased by 51.4%.

The total CPUE increased by 14.8%, mostly due to the important increase of skipjack, yellow fin, big eyes and mahi-mahi CPUE, which mask the dramatic decreased of Albacore CPUE.

Albacore CPUE decreased to 70.9% of its previous quarter value and is the lowest CPUE ever obtain for Albacore (11.47 fishes per 1000 hooks). The CPUE for all other species, except for billfishes which decreased by 31.7%, increased dramatically over their year ago values. The CPUE for skipjack increased 283.2% from the quarter a year ago, yellow fin also increased by 294.5% and big eye tuna increased by 127.9% compared to last year. The catch rates of mahi-mahi (+631.9%), Wahoo (+83.4%) and

sharks (+56.0%) all increased dramatically compared to the first quarter of 2002 indicating that species other than albacore are being targeted more and more.

## Western Pacific Logbook Summary Report for 1st Quarter 2003

Vessels landing or based in American Samoa  
Based on Date of Haul for all areas

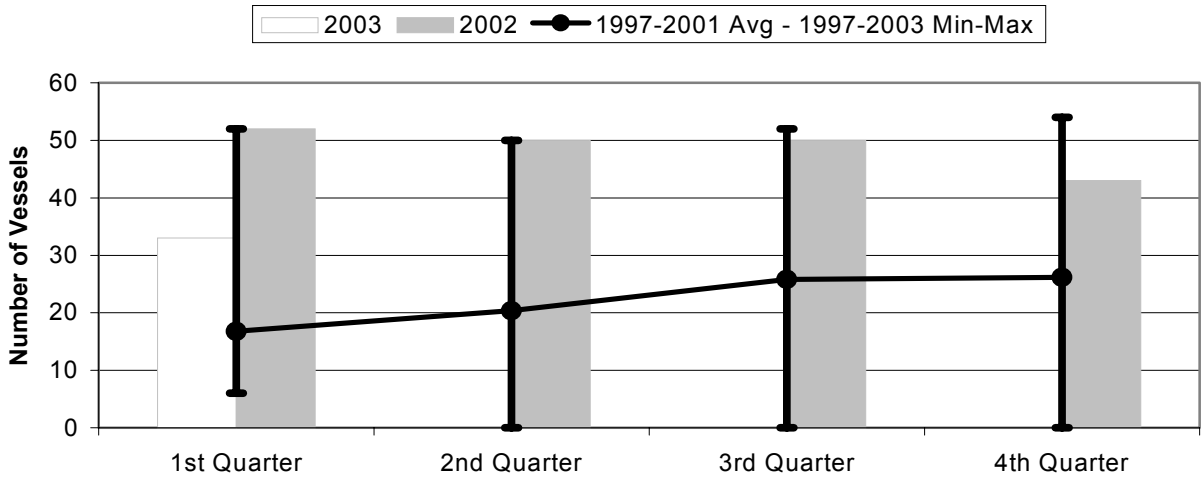
### TRIP INFORMATION

Number of Vessels:	33
Number of Sets:	920
1000's of Hooks Set:	2070
Number of Lightsticks Used:	52

### CATCH INFORMATION

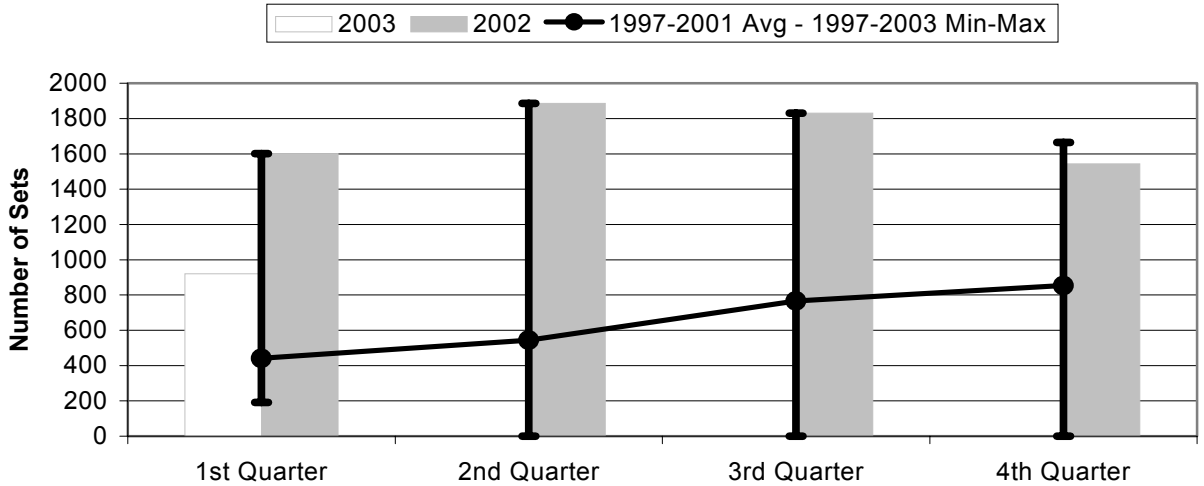
Species	# Caught	# Kept	# Finned	# Caught/ 1000 Hooks
<b>BILLFISH</b>				
Black marlin	7	0		0.00
Blue marlin	601	34		0.29
Striped Marlin	44	8		0.02
Sailfish	78	4		0.04
Spearfish	34	2		0.02
Swordfish	59	38		0.03
TOTALS	823	86		0.40
<b>SHARKS</b>				
Blue shark	1570	11		0.76
Mako Shark	19	0		0.01
Thresher Shark	44	9		0.02
White-Tip Shark	444	16		0.21
Other Sharks	114	1		0.06
TOTALS	2191	37		1.06
<b>TUNA</b>				
Albacore	23739	23737		11.47
Bigeye Tuna	1930	1773		0.93
Bluefin Tuna	18	18		0.01
Skipjack Tuna	9202	7472		4.44
Yellowfin Tuna	5677	5479		2.74
TOTALS	40566	38479		19.59
<b>OTHER PELAGICS</b>				
Mahimahi	1379	796		0.67
Moonfish	110	25		0.05
Oilfish	795	19		0.38
Pomfret	130	48		0.06
Wahoo	3570	2977		1.72
TOTALS	5984	3865		2.89
<b>NON-PMUS</b>				
Other Pelagic Fish	553	3		0.27
TOTALS	553	3		0.27

**Figure 1. American Samoa Longline Vessels Submitting Logs by Quarter for**



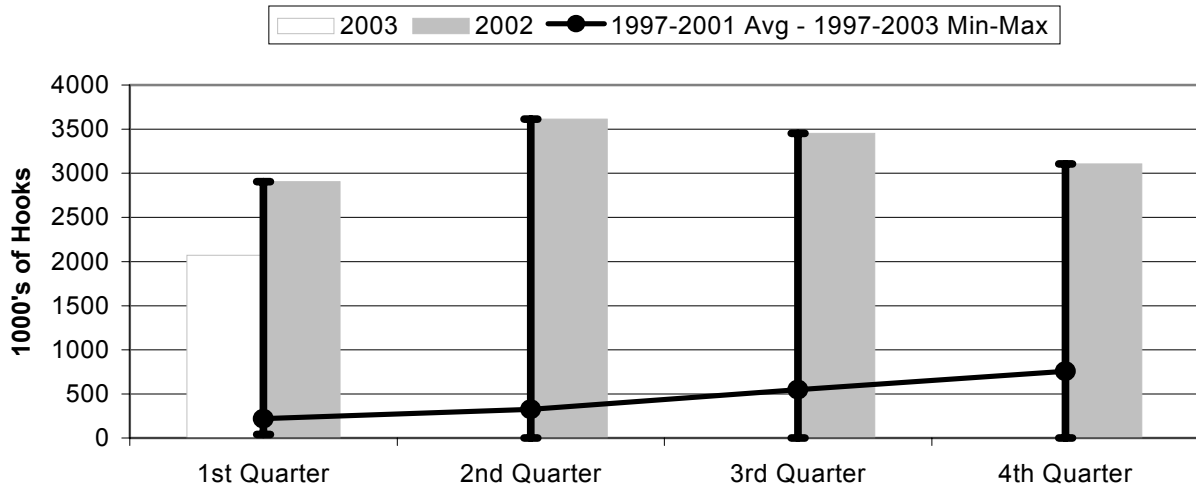
	1st Quarter	2nd Quarter	3rd Quarter	4th Quarter
2003	33	0	0	0
2002	52	50	50	43
1997-2003 Max	52	50	52	54
1997-2001 Avg	16.8	20.4	25.8	26.2
1997-2003 Min	6	0	0	0

**Figure 2. Number of Sets by American Samoa Longline Vessels by Quarter for**



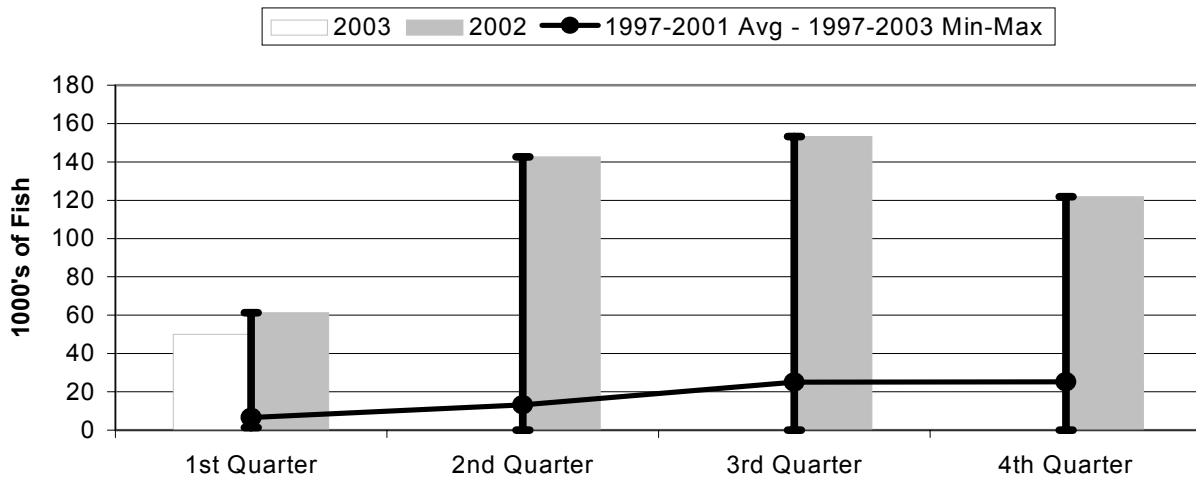
	1st Quarter	2nd Quarter	3rd Quarter	4th Quarter
2003	920	0	0	0
2002	1602	1886	1831	1543
1997-2003 Max	1602	1886	1831	1665
1997-2001 Avg	441	543	766	854
1997-2003 Min	192	0	0	0

**Figure 3. Number of Hooks Set by the American Samoa Longline Fleet by Quarter for**



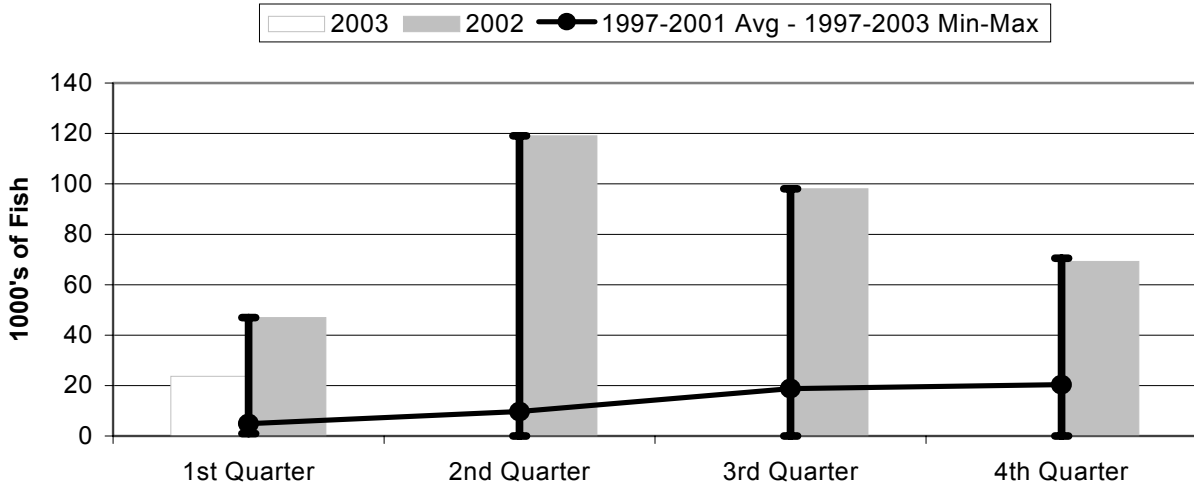
	1st Quarter	2nd Quarter	3rd Quarter	4th Quarter
2003	2070	0	0	0
2002	2904	3613	3453	3107
1997-2003 Max	2904	3613	3453	3107
1997-2001 Avg	221	324	547	756
1997-2003 Min	41	0	0	0

**Figure 4. American Samoa Longline Total Catch (All Species) by Quarter for**



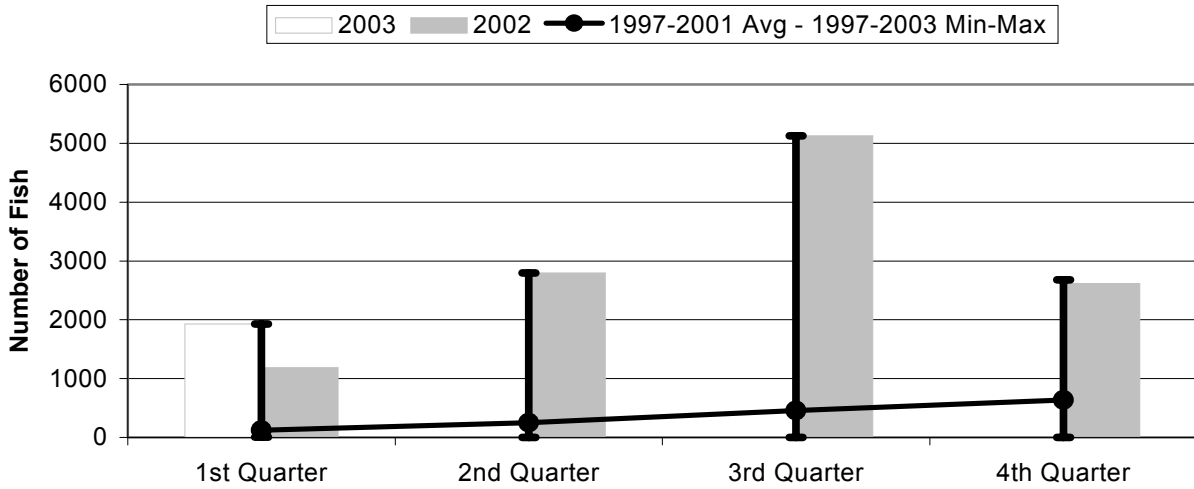
	1st Quarter	2nd Quarter	3rd Quarter	4th Quarter
2003	50.12	0.00	0.00	0.00
2002	61.24	142.60	153.23	121.83
1997-2003 Max	61.24	142.60	153.23	121.83
1997-2001 Avg	6.65	13.31	25.10	25.30
1997-2003 Min	1.32	0.00	0.00	0.00

**Figure 5. American Samoa Longline Albacore Catch by Quarter for**



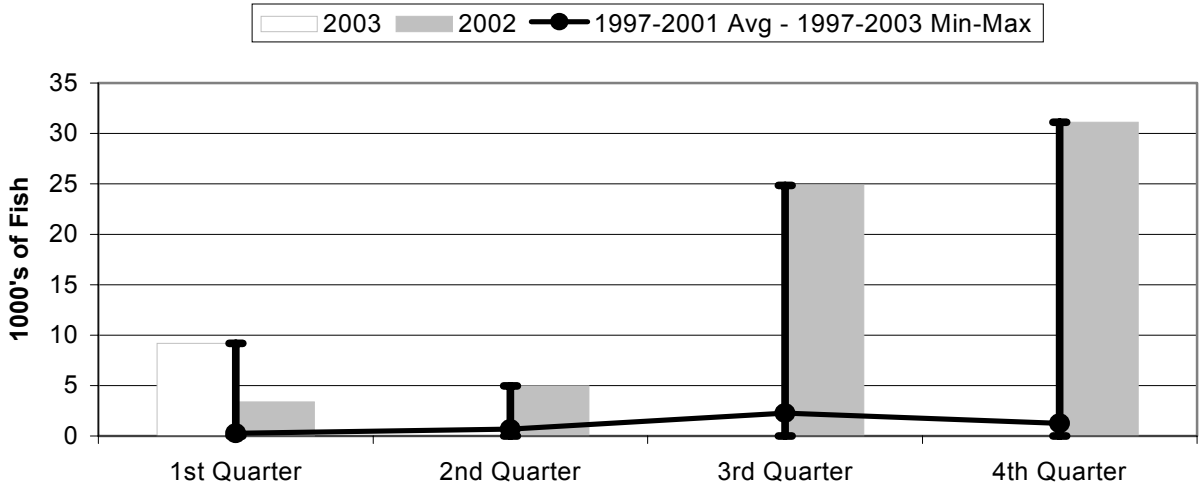
	1st Quarter	2nd Quarter	3rd Quarter	4th Quarter
2003	23.74	0.00	0.00	0.00
2002	46.98	118.99	98.03	69.21
1997-2003 Max	46.98	118.99	98.03	70.53
1997-2001 Avg	4.91	9.65	18.83	20.30
1997-2003 Min	0.94	0.00	0.00	0.00

**Figure 6. American Samoa Longline Bigeye Tuna Catch by Quarter for**



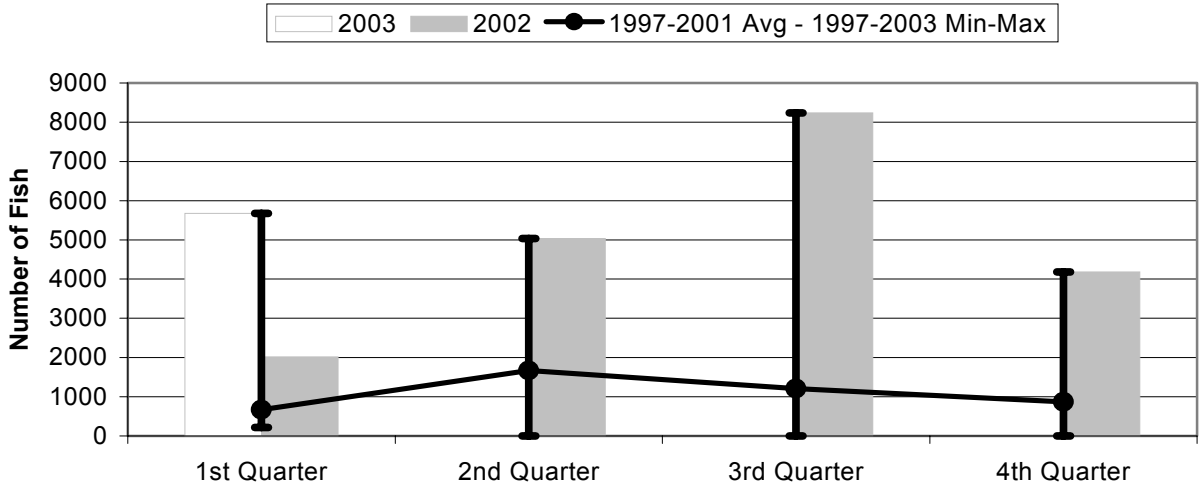
	1st Quarter	2nd Quarter	3rd Quarter	4th Quarter
2003	1930	0	0	0
2002	1188	2798	5130	2619
1997-2003 Max	1930	2798	5130	2678
1997-2001 Avg	121	251	455	634
1997-2003 Min	6	0	0	0

**Figure 7. American Samoa Longline Skipjack Tuna Catch by Quarter for**



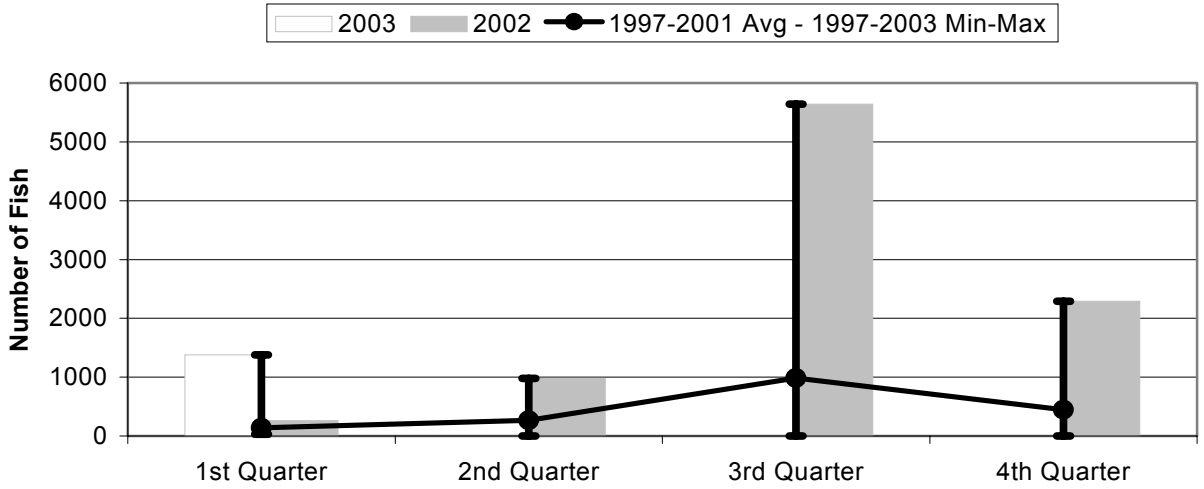
	1st Quarter	2nd Quarter	3rd Quarter	4th Quarter
2003	9.20	0.00	0.00	0.00
2002	3.37	4.99	24.86	31.11
1997-2003 Max	9.20	4.99	24.86	31.11
1997-2001 Avg	0.28	0.68	2.27	1.24
1997-2003 Min	0.00	0.00	0.00	0.00

**Figure 8. American Samoa Longline Yellowfin Tuna Catch by Quarter for**



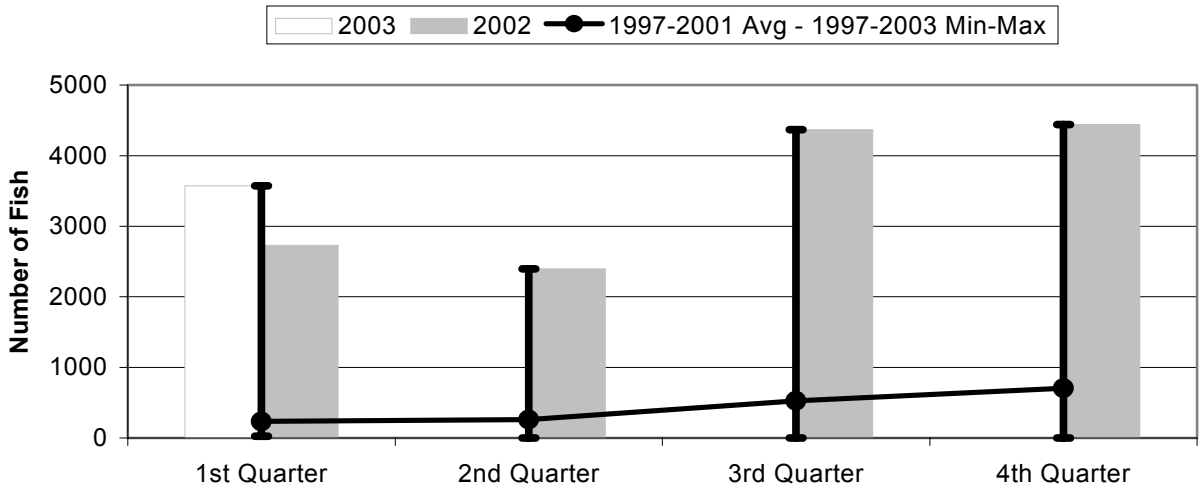
	1st Quarter	2nd Quarter	3rd Quarter	4th Quarter
2003	5677	0	0	0
2002	2017	5037	8241	4181
1997-2003 Max	5677	5037	8241	4181
1997-2001 Avg	669	1673	1212	874
1997-2003 Min	213	0	0	0

**Figure 9. American Samoa Mahimahi Catch by Quarter for**



	1st Quarter	2nd Quarter	3rd Quarter	4th Quarter
2003	1379	0	0	0
2002	263	979	5642	2287
1997-2003 Max	1379	979	5642	2287
1997-2001 Avg	141	265	987	445
1997-2003 Min	30	0	0	0

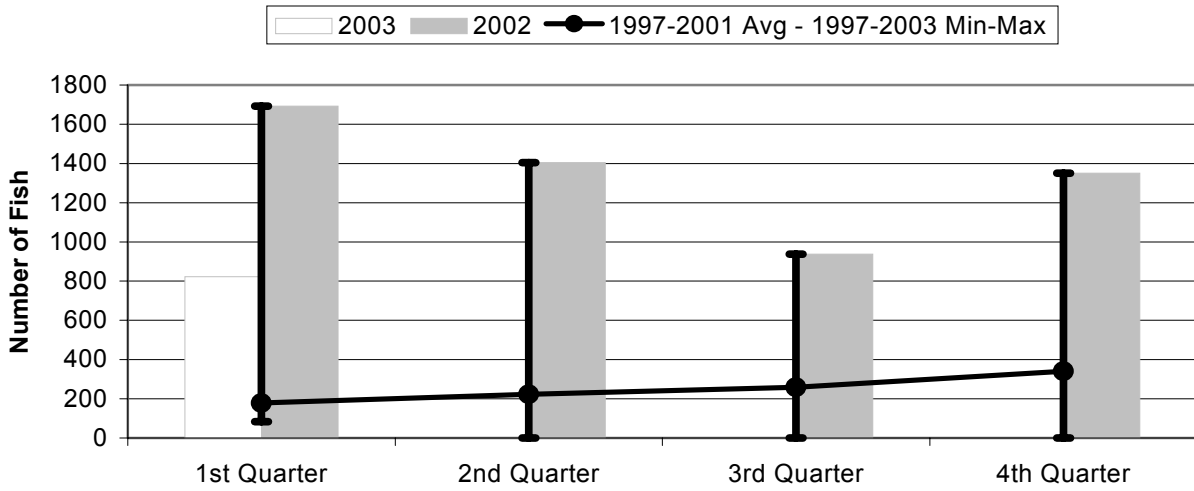
**Figure 10. American Samoa Wahoo Catch by Quarter for**



	1st Quarter	2nd Quarter	3rd Quarter	4th Quarter
2003	3570	0	0	0
2002	2729	2394	4365	4440
1997-2003 Max	3570	2394	4365	4440
1997-2001 Avg	236	259	525	705
1997-2003 Min	27	0	0	0

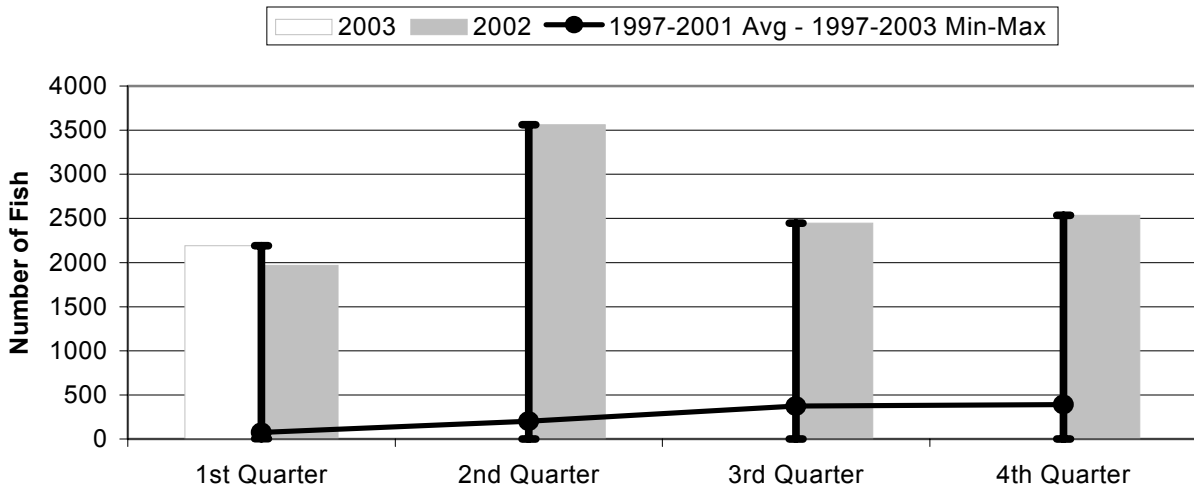


**Figure 11. American Samoa Billfish Catch by Quarter for**



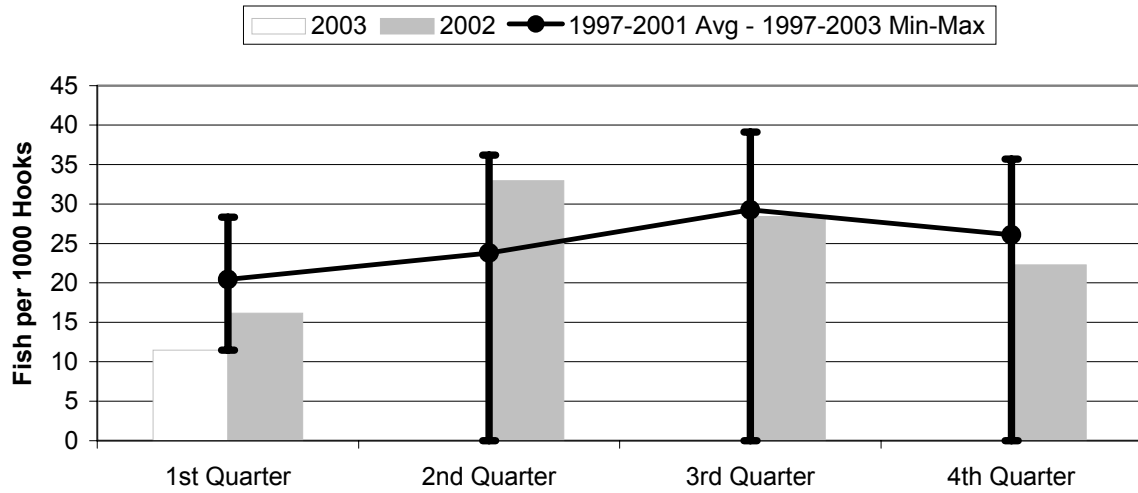
	1st Quarter	2nd Quarter	3rd Quarter	4th Quarter
2003	823	0	0	0
2002	1692	1404	937	1351
1997-2003 Max	1692	1404	937	1351
1997-2001 Avg	178	224	259	340
1997-2003 Min	83	0	0	0

**Figure 12. American Samoa Shark Catch by Quarter for**



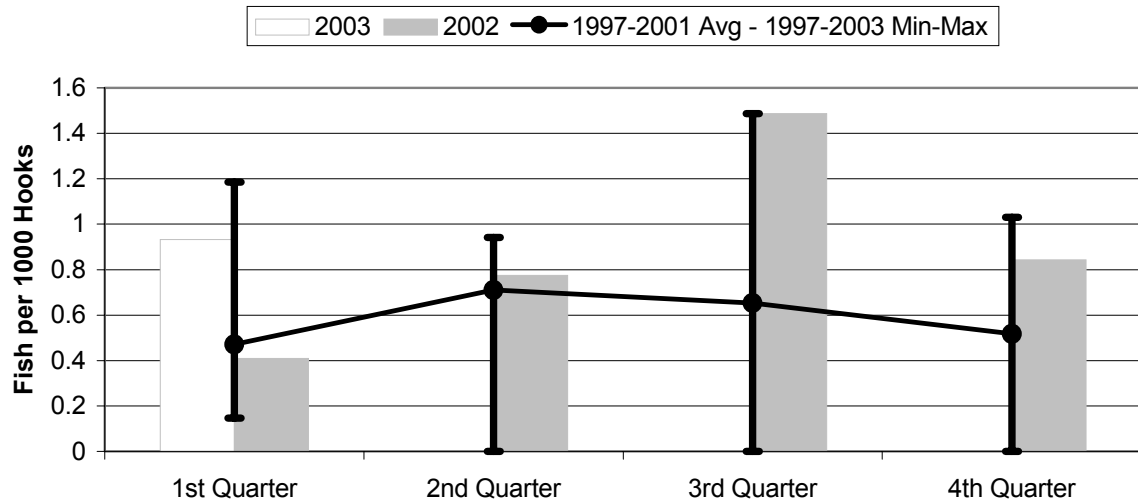
	1st Quarter	2nd Quarter	3rd Quarter	4th Quarter
2003	2191	0	0	0
2002	1968	3562	2446	2535
1997-2003 Max	2191	3562	2446	2535
1997-2001 Avg	76	203	372	391
1997-2003 Min	5	0	0	0

**Figure 13. American Samoa Longline Albacore Catch/1000 Hooks by Quarter for**



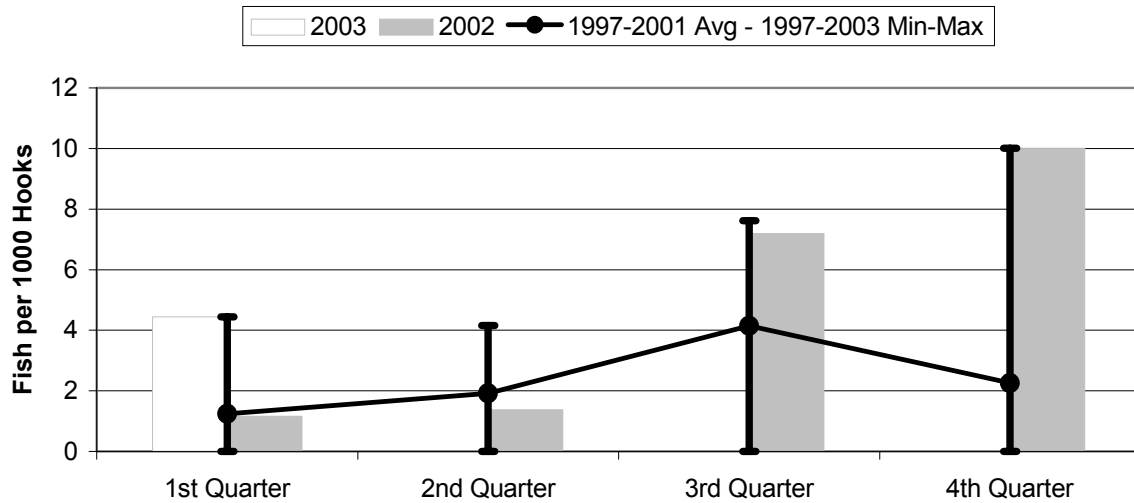
	1st Quarter	2nd Quarter	3rd Quarter	4th Quarter
2003	11.47	0.00	0.00	0.00
2002	16.18	32.93	28.39	22.27
1997-2003 Max	28.33	36.18	39.13	35.68
1997-2001 Avg	20.43	23.78	29.26	26.08
1997-2003 Min	11.47	0.00	0.00	0.00

**Figure 14. American Samoa Longline Bigeye Tuna Catch/1000 Hooks by Quarter for**



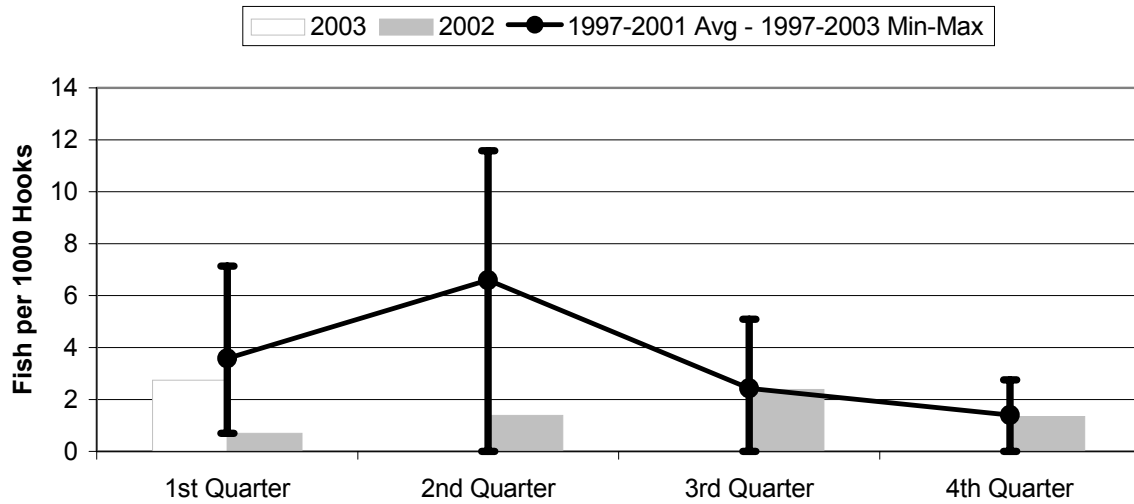
	1st Quarter	2nd Quarter	3rd Quarter	4th Quarter
2003	0.932	0.000	0.000	0.000
2002	0.409	0.774	1.486	0.843
1997-2003 Max	1.185	0.942	1.486	1.030
1997-2001 Avg	0.471	0.710	0.653	0.518
1997-2003 Min	0.146	0.000	0.000	0.000

**Figure 15. American Samoa Longline Skipjack Tuna Catch/1000 Hooks by Quarter for**



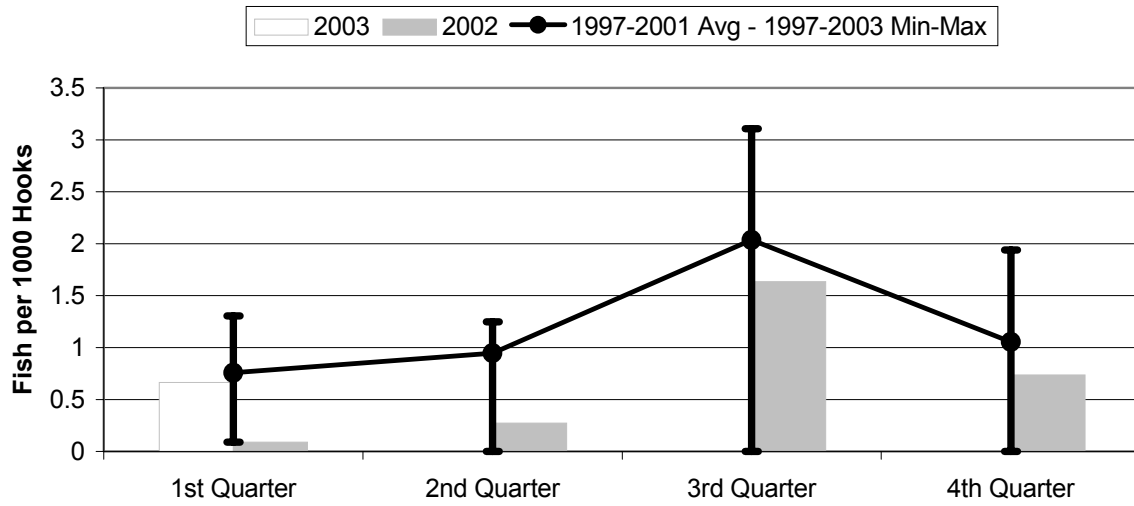
	1st Quarter	2nd Quarter	3rd Quarter	4th Quarter
2003	4.445	0.000	0.000	0.000
2002	1.160	1.380	7.199	10.01
1997-2003 Max	4.445	4.155	7.615	10.01
1997-2001 Avg	1.238	1.923	4.148	2.257
1997-2003 Min	0.000	0.000	0.000	0.000

**Figure 16. American Samoa Yellowfin Tuna Catch/1000 Hooks by Quarter for**



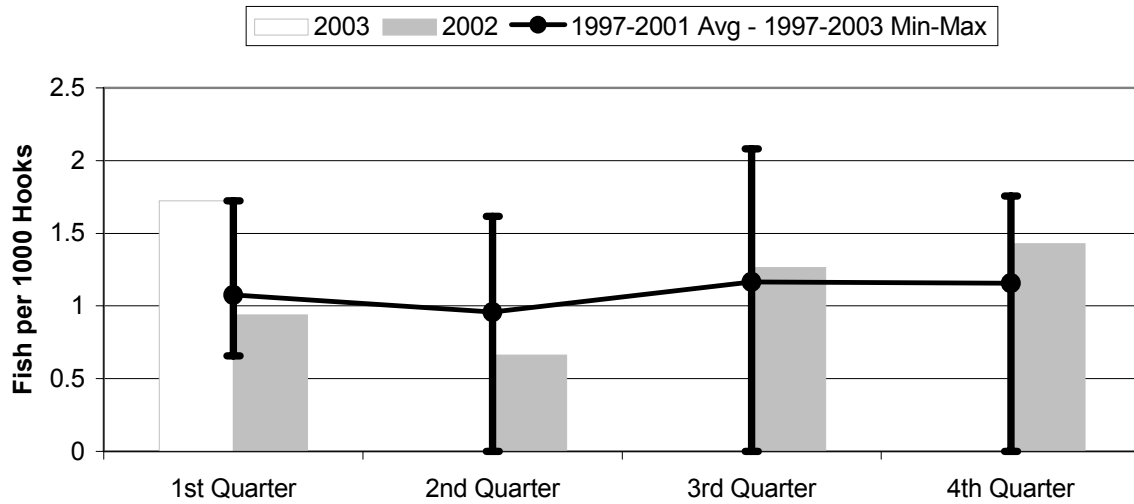
	1st Quarter	2nd Quarter	3rd Quarter	4th Quarter
2003	2.742	0.000	0.000	0.000
2002	0.695	1.394	2.387	1.346
1997-2003 Max	7.139	11.57	5.088	2.759
1997-2001 Avg	3.580	6.600	2.428	1.407
1997-2003 Min	0.695	0.000	0.000	0.000

**Figure 17. American Samoa Longline Mahimahi Catch/1000 Hooks by Quarter for**



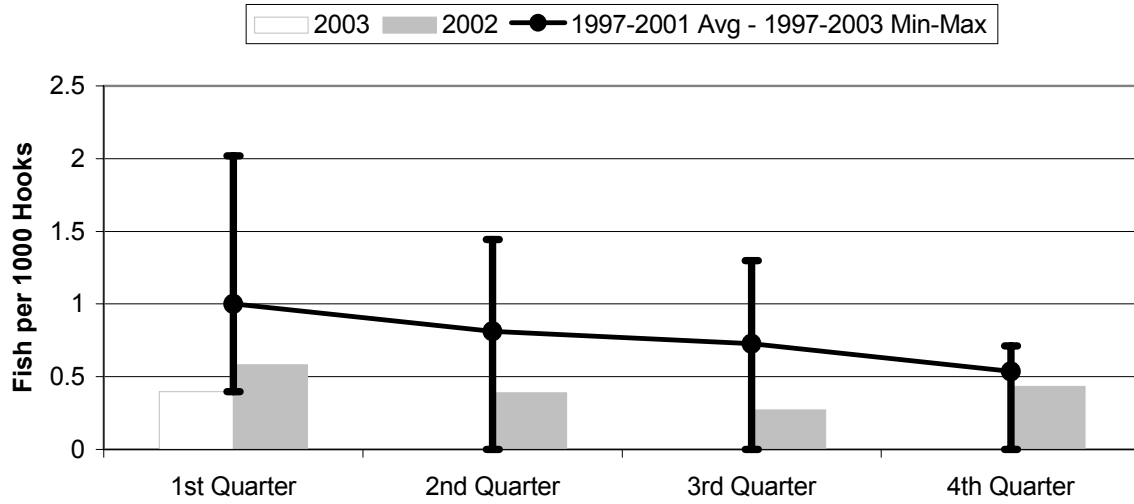
	1st Quarter	2nd Quarter	3rd Quarter	4th Quarter
2003	0.666	0.000	0.000	0.000
2002	0.091	0.271	1.634	0.736
1997-2003 Max	1.305	1.248	3.106	1.940
1997-2001 Avg	0.758	0.947	2.036	1.053
1997-2003 Min	0.091	0.000	0.000	0.000

**Figure 18. American Samoa Wahoo Catch/1000 Hooks by Quarter for**



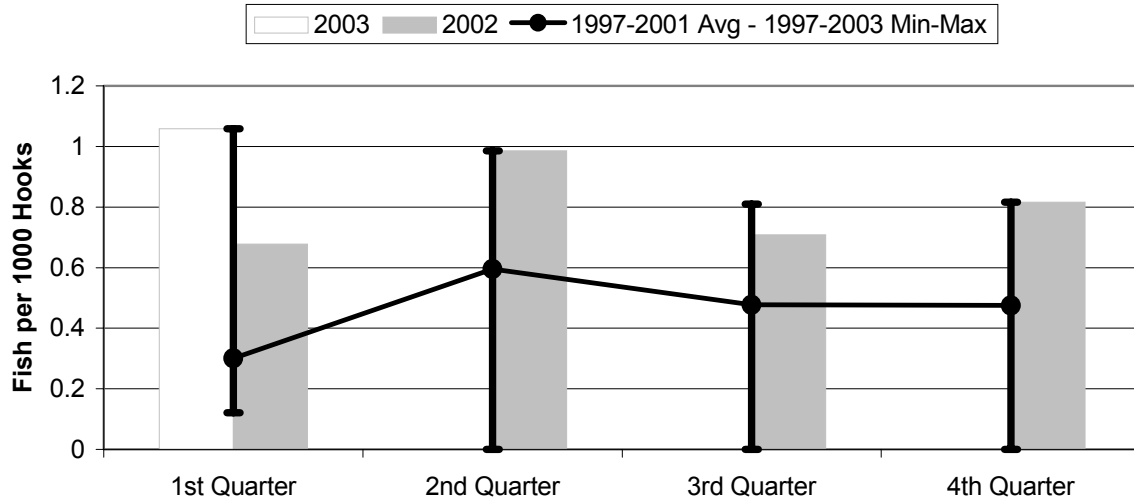
	1st Quarter	2nd Quarter	3rd Quarter	4th Quarter
2003	1.724	0.000	0.000	0.000
2002	0.940	0.663	1.264	1.429
1997-2003 Max	1.724	1.617	2.080	1.755
1997-2001 Avg	1.075	0.957	1.165	1.157
1997-2003 Min	0.657	0.000	0.000	0.000

**Figure 19. American Samoa Billfish Catch/1000 Hooks by Quarter for**



	1st Quarter	2nd Quarter	3rd Quarter	4th Quarter
2003	0.398	0.000	0.000	0.000
2002	0.583	0.389	0.271	0.435
1997-2003 Max	2.019	1.444	1.298	0.713
1997-2001 Avg	1.000	0.812	0.726	0.536
1997-2003 Min	0.398	0.000	0.000	0.000

**Figure 20. American Samoa Shark Catch/1000 Hooks by Quarter for**



	1st Quarter	2nd Quarter	3rd Quarter	4th Quarter
2003	1.058	0.000	0.000	0.000
2002	0.678	0.986	0.708	0.816
1997-2003 Max	1.058	0.986	0.810	0.816
1997-2001 Avg	0.301	0.595	0.477	0.475
1997-2003 Min	0.122	0.000	0.000	0.000