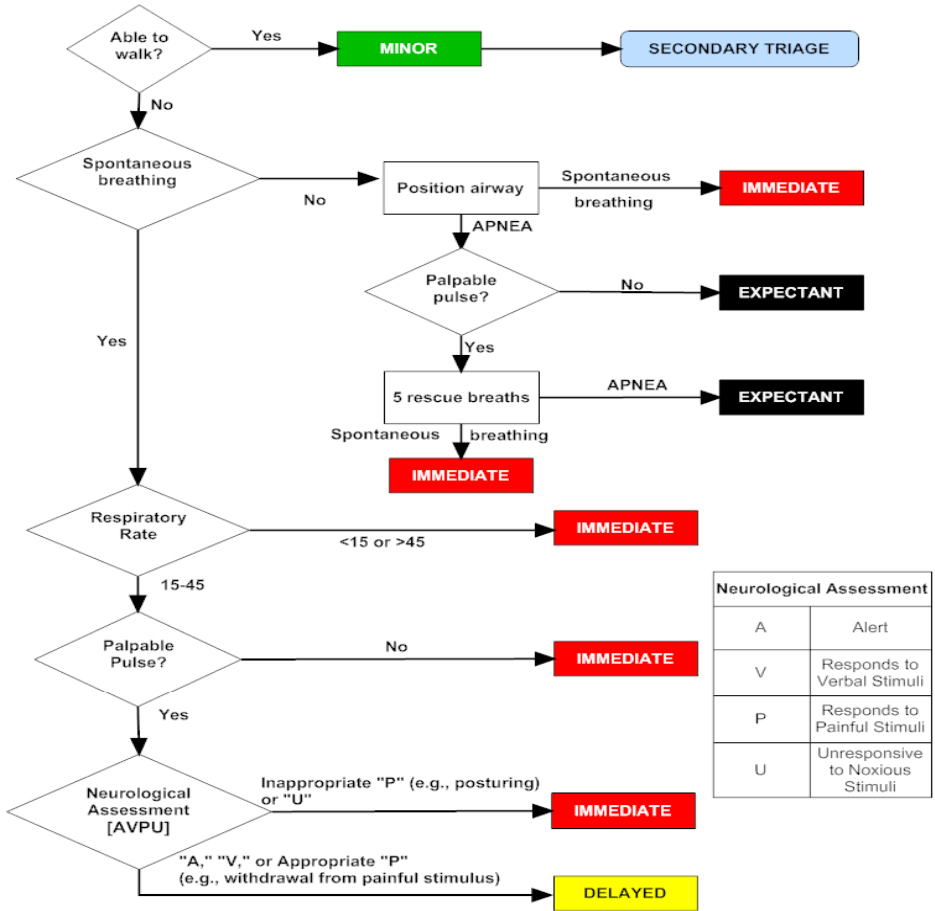


**JumpSTART Pediatric Multiple Casualty Incident Triage**



Use JumpSTART if the Patient appears to be a child.

Use an adult system, such as START, if the patient appears to be a young adult.

**Conventional Triage Categories**

<p><b>EXPECTANT</b> Black Triage Tag Color</p> <ul style="list-style-type: none"> <li>Victim unlikely to survive given severity of injuries, level of available care, or both</li> <li>Palliative care and pain relief should be provided</li> </ul>	<p><b>DELAYED</b> Yellow Triage Tag Color</p> <ul style="list-style-type: none"> <li>Victim's transport can be delayed</li> <li>Includes serious and potentially life-threatening injuries, but status not expected to deteriorate significantly over several hours</li> </ul>
<p><b>IMMEDIATE</b> Red Triage Tag Color</p> <ul style="list-style-type: none"> <li>Victim can be helped by immediate intervention and transport</li> <li>Requires medical attention within minutes for survival (up to 60)</li> <li>Includes compromises to patient's Airway, Breathing, Circulation</li> </ul>	<p><b>MINOR</b> Green Triage Tag Color</p> <ul style="list-style-type: none"> <li>Victim with relatively minor injuries</li> <li>Status unlikely to deteriorate over days</li> <li>May be able to assist in own care: "Walking Wounded"</li> </ul>