

Yuba River Watershed

Linear Stream Miles

Above Englebright Dam - 1,529
(excluding lake/reservoir centerline)

Miles of Historic

Salmonid Habitat - 228*

*Lindley *et al.*, 2006

Year of FERC License Expiration

2009

FERC No. 2088 South Fork

2013

Ferc No. 2266 Yuba-Bear
FERC No. 2310 Drum-Spaulding

2016

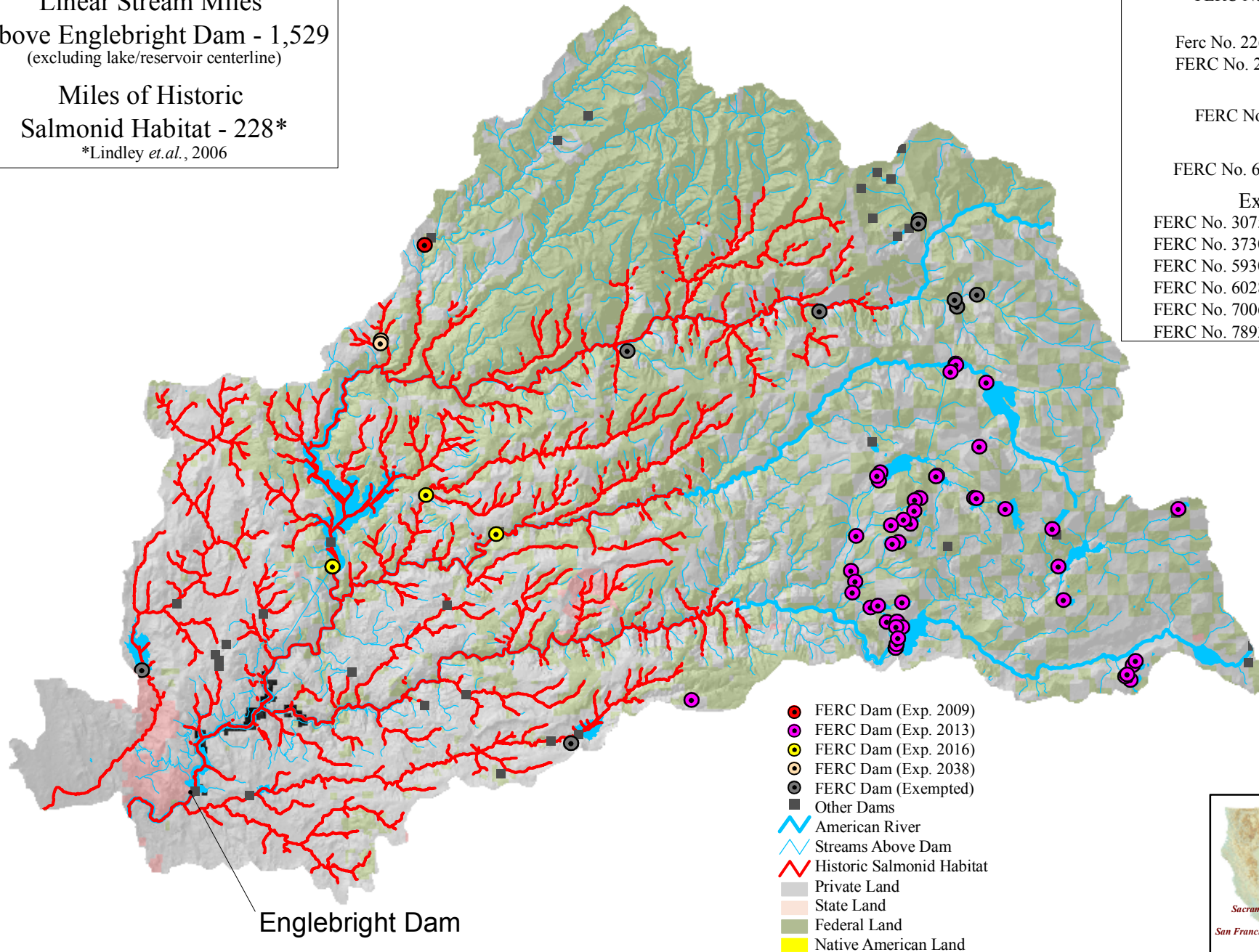
FERC No. 2246 Yuba River

2038

FERC No. 6780 Deadwood Creek

Exemptions

FERC No. 3075 Virginia Ranch Dam
FERC No. 3730 Salmon Creek
FERC No. 5930 Scotts Flat
FERC No. 6028 Lower Haypress Creek
FERC No. 7006 Charcoal Ravine
FERC No. 7893 Wright Ranch



Englebright Dam

- FERC Dam (Exp. 2009)
- FERC Dam (Exp. 2013)
- FERC Dam (Exp. 2016)
- FERC Dam (Exp. 2038)
- FERC Dam (Exempted)
- Other Dams
- ~ American River
- ~ Streams Above Dam
- ~ Historic Salmonid Habitat
- Private Land
- State Land
- Federal Land
- Native American Land

Sources:
Lindley, S.T. *et al.* "Historical Population Structure of Central Valley Steelhead and its Alteration by Dams" 2006.
Federal Energy Regulatory Commission Database 2002
California Gap Analysis "Land ownership and management for California" 1998
Map Created by: C. Gavette; Oct. 2007



Area of Detail

