



# Merced River Watershed

Linear Stream Miles

Above New Exchequer Dam - 1,305

(excluding lake/reservoir centerline)

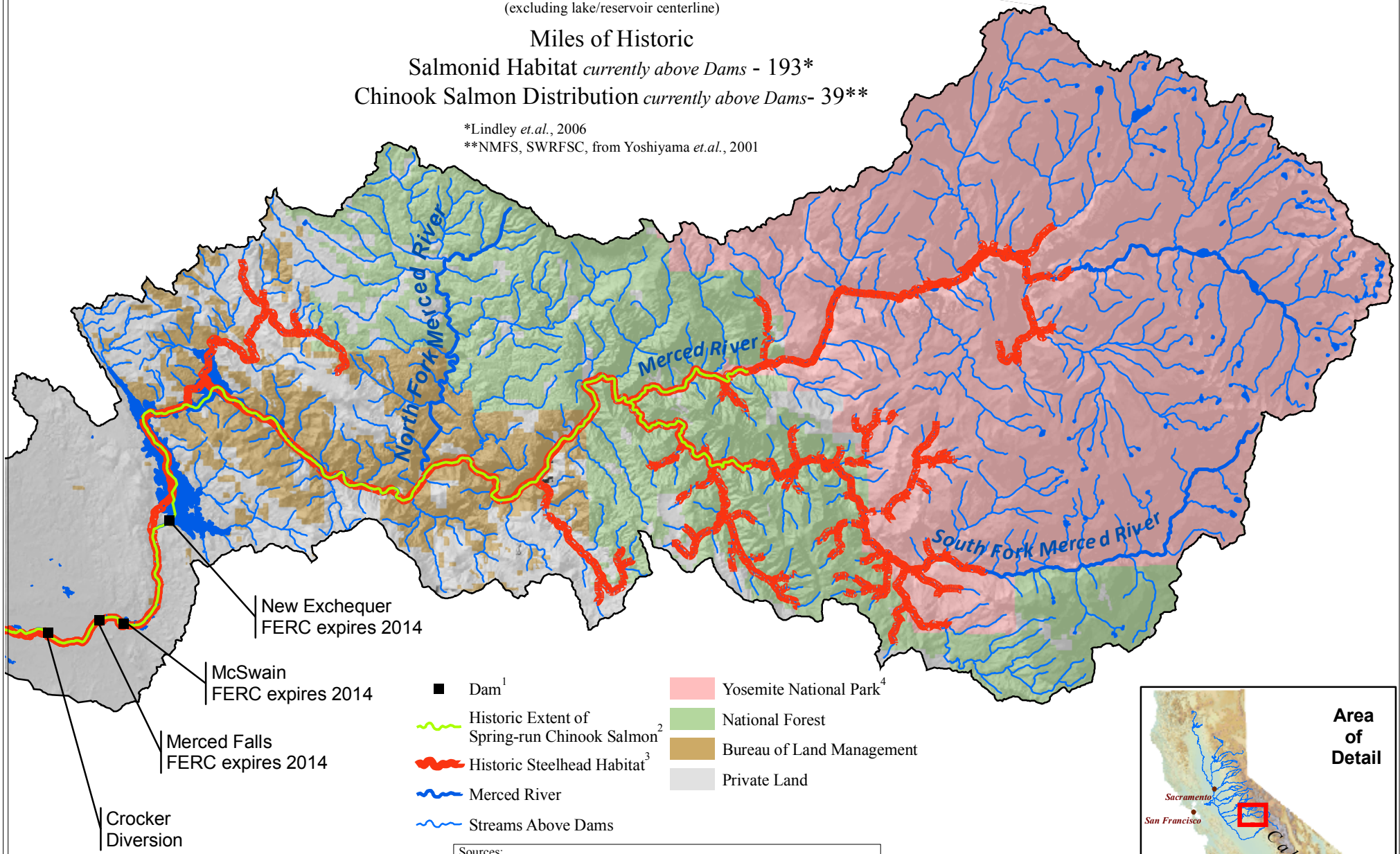
Miles of Historic

Salmonid Habitat *currently above Dams* - 193\*

Chinook Salmon Distribution *currently above Dams*- 39\*\*

\*Lindley *et al.*, 2006

\*\*NMFS, SWRFSC, from Yoshiyama *et al.*, 2001



Sources:  
<sup>1</sup>Federal Energy Regulatory Commission Database 2002  
<sup>2</sup>NMFS, SWFSC Santa Cruz 2003  
<sup>3</sup>Lindley, S.T. *et al.* "Historical Population Structure of Central Valley Steelhead and its Alteration by Dams" 2006.  
<sup>4</sup>California Gap Analysis "Land ownership and management for California" 1998  
 Map Created by: NMFS-SWR-Santa Rosa, October 2009

