

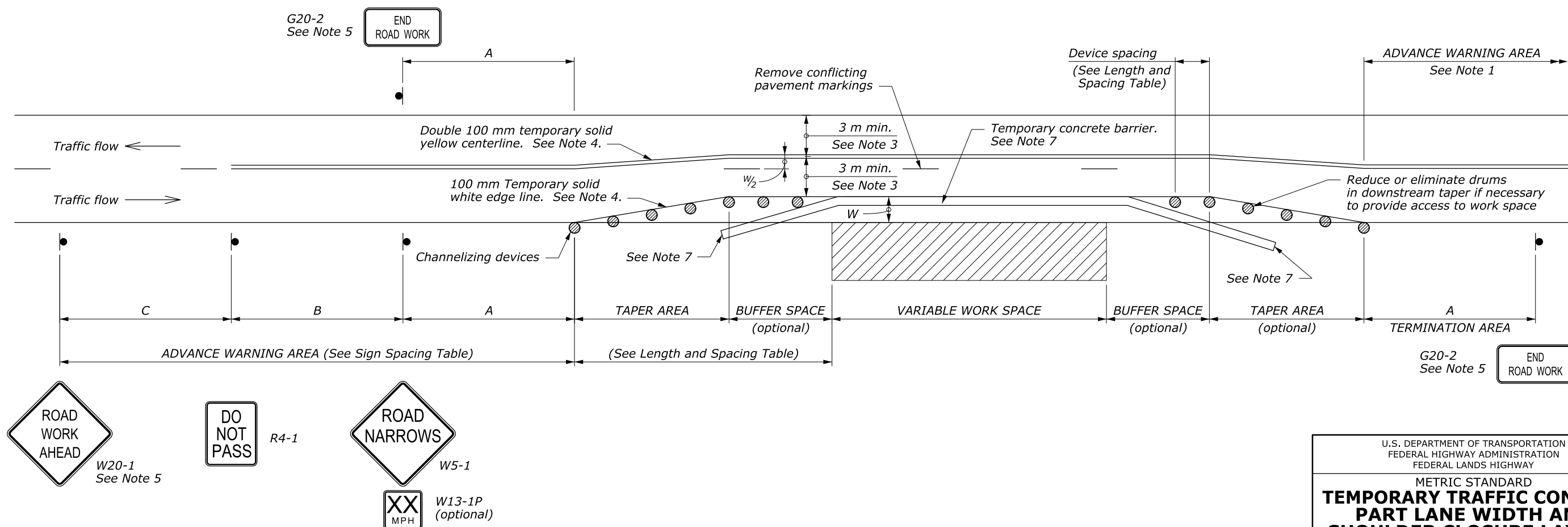
LENGTH AND SPACING TABLE						
APPROACH SPEED*		MINIMUM TAPER LENGTH	BUFFER SPACE LENGTH	CHANNELIZING DEVICE		
MPH	km/h			TAPER AREA	BUFFER SPACE	WORK SPACE
20	30	Shifting taper formula: $L = \frac{WS^2}{310}$ for $S < 70$ km/h $L = \frac{WS}{3.2}$ for $S \geq 70$ km/h Where: L = Minimum length of taper W = Width of offset in meters S = Metric equivalent of posted speed limit or 85 percentile speed prior to work in kilometers per hour	35	6	12	12
25	40		45	8	15	15
30	50		60	9	18	18
35	55		75	11	21	21
40	65		95	12	24	24
45	70	110	14	27	27	
50	80	130	15	30	30	
55	90	150	17	34	34	
60	95	175	18	37	37	
65	105	195	20	40	40	
70	115	225	21	43	43	

ROAD TYPE	DISTANCE BETWEEN SIGNS IN METERS		
	A	B	C
Urban and Rural ≤ 50 km/h [≤ 30 MPH]	30	30	30
Urban and Rural 60-80 km/h [35-50 MPH]	100	100	100
Rural greater than 80 km/h [50 MPH]	150	150	150
Expressway / Freeway	300	450	800

NOTE:

- Signs are shown for one direction of travel only. Place devices similar to those depicted for the opposite direction of travel.
- Final location and spacing of signs and devices may be changed to fit field conditions as approved by the CO.
- For project specific minimum width, refer to Special Contract Requirements, Section 156.
- If the roadway surface is paved, install temporary pavement markings. If nearest no-passing zone is within 120 m, extend markings to connect zones.
- If closure is completely within the project limits, eliminate the "ROAD WORK AHEAD" (W20-1) and "END ROAD WORK" (G20-2) signs.
- Install "PASS WITH CARE" sign (R4-2) at ends of no-passing zone if directed by the CO.
- Place the barrier according to the AASHTO Roadside Design Guide. Terminate barrier ends outside the clear zone or protect the ends of the barrier with a crash cushion. Include reflectors on barrier at 7.6 m intervals.
- Do not allow equipment, materials, or vehicles to be parked or stored in the buffer space.
- Dimensions without units are millimeters.

* Approach speed based on the regulatory posted speed, not the advisory speed.



NO SCALE

U.S. DEPARTMENT OF TRANSPORTATION
 FEDERAL HIGHWAY ADMINISTRATION
 FEDERAL LANDS HIGHWAY

METRIC STANDARD

**TEMPORARY TRAFFIC CONTROL
 PART LANE WIDTH AND
 SHOULDER CLOSURE LAYOUT
 WITH TEMPORARY BARRIER**

STANDARD APPROVED FOR USE 6/2005

REVISOR: DRAFT: 9/2010

STANDARD M635-12