

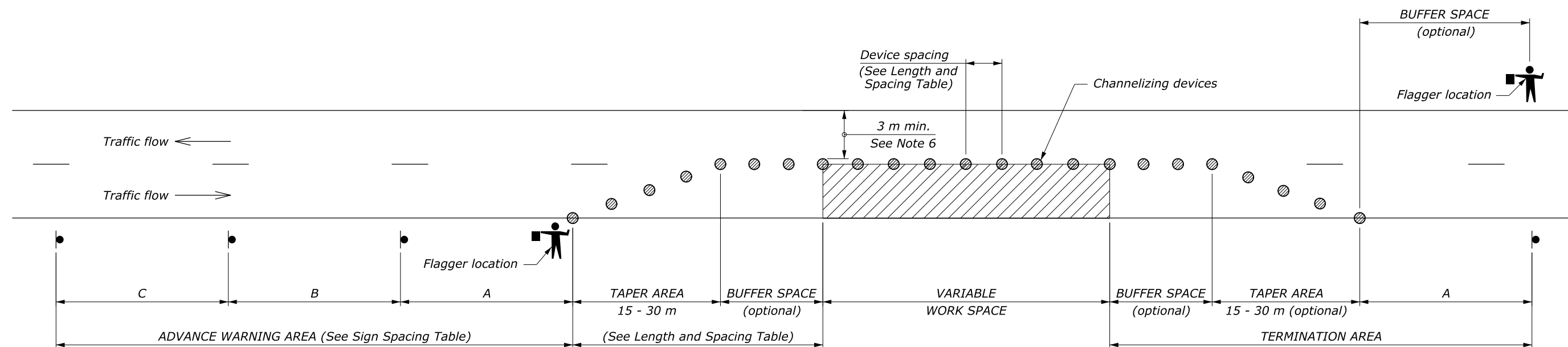
LENGTH AND SPACING TABLE					
APPROACH SPEED*		BUFFER SPACE LENGTH	CHANNELIZING DEVICE		
MPH	km/h		TAPER AREA	BUFFER SPACE	WORK SPACE
		METER	SPACING IN METERS		
20	30	35	6	12	12
25	40	45	6	15	15
30	50	60	6	18	18
35	55	75	6	21	21
40	65	95	6	24	24
45	70	110	6	27	27
50	80	130	6	30	30
55	90	150	6	34	34
60	95	175	6	37	37
65	105	195	6	40	40
70	115	225	6	43	43

* Approach speed based on the regulatory posted speed, not the advisory speed.

ROAD TYPE	DISTANCE BETWEEN SIGNS IN METERS		
	A	B	C
Urban and Rural ≤ 50 km/h [≤ 30 MPH]	30	30	30
Urban and Rural 60-80 km/h [35-50 MPH]	100	100	100
Rural greater than 80 km/h [50 MPH]	150	150	150
Expressway / Freeway	300	450	800

NOTE:

1. Signs are shown for one direction of travel only. Place devices similar to those depicted for the opposite direction of travel.
2. Final location and spacing of signs and devices may be changed to fit field conditions as approved by the CO.
3. For pilot car operation, mount the PILOT CAR FOLLOW ME (G20-4) sign at a conspicuous location on the rear of vehicle. Prominently display the name of the contractor on the pilot car.
4. If closure is completely within the project limits, eliminate the "ROAD WORK AHEAD" (W20-1) and "END ROAD WORK" (G20-2) signs.
5. For night time flagging operation, provide floodlighting at flagger stations.
6. For project specific minimum width, refer to the Special Contract Requirements, Section 156.
7. Do not allow equipment, materials, or vehicles to be parked or stored in the buffer space.



W20-1
See Note 4



W20-4



W13-1P
(optional)



W20-7a



W16-2P
(optional)



G20-2
See Note 4

NO SCALE

U.S. DEPARTMENT OF TRANSPORTATION FEDERAL HIGHWAY ADMINISTRATION FEDERAL LANDS HIGHWAY	
METRIC STANDARD	
TEMPORARY TRAFFIC CONTROL SINGLE LANE CLOSURE LAYOUT (WITH FLAGGERS)	
STANDARD APPROVED FOR USE 6/2005	STANDARD
REVISED: DRAFT: 9/2010	M635-6