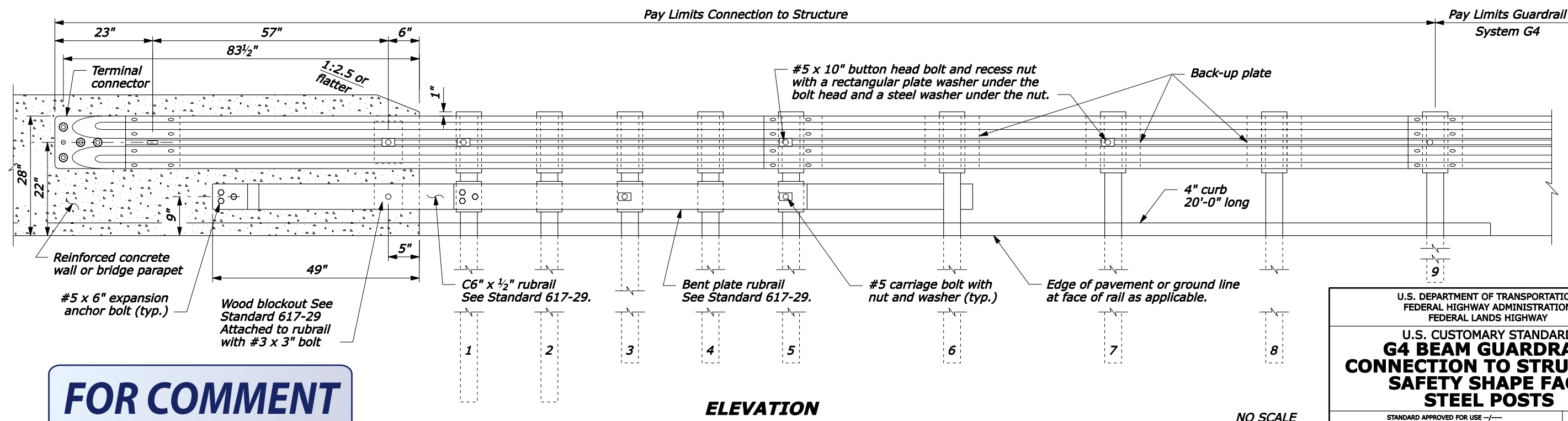
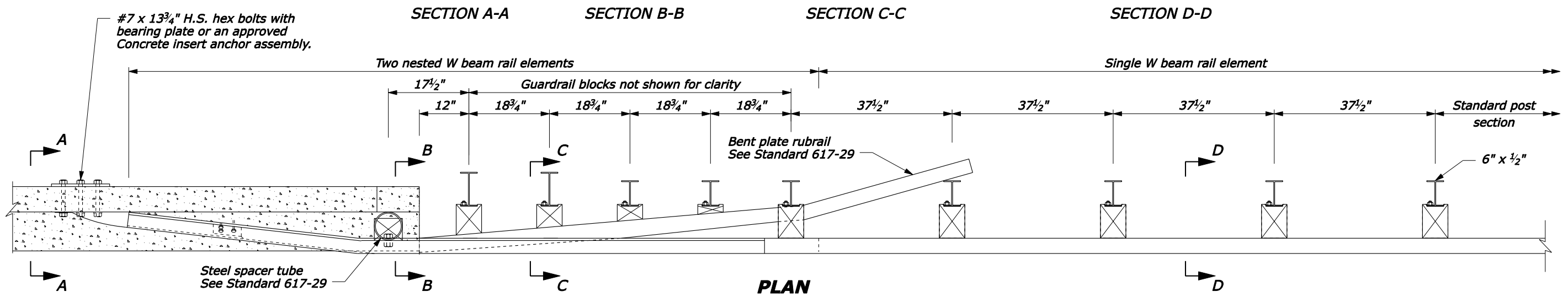


- NOTE:**
- Posts 1 through 5 require an additional hole to attach lower wood blocks and/or rubrail.
 - Offset drill wood blocks for rubrail to sit squarely on the post flange on posts 1 through 4. Secure blocks to posts 2 and 4. Secure rubrail and blocks to post flange on posts 1, 3, and 5 using #5 carriage bolts.
 - Do not bolt W beam to posts and blocks at posts 2 and 4.
 - Reinforced concrete wall or bridge parapet must be capable of developing a 59.6 kip pull out strength.



FOR COMMENT

NO SCALE

U.S. DEPARTMENT OF TRANSPORTATION
 FEDERAL HIGHWAY ADMINISTRATION
 FEDERAL LANDS HIGHWAY

**U.S. CUSTOMARY STANDARD
 G4 BEAM GUARDRAIL
 CONNECTION TO STRUCTURE
 SAFETY SHAPE FACE
 STEEL POSTS**

STANDARD APPROVED FOR USE --/---

REVISED: 6/2004

STANDARD 617-28

22-Jun-2004 03:57 PM
 F:\StdDraw\Draft\181728.dgn [US Customary]