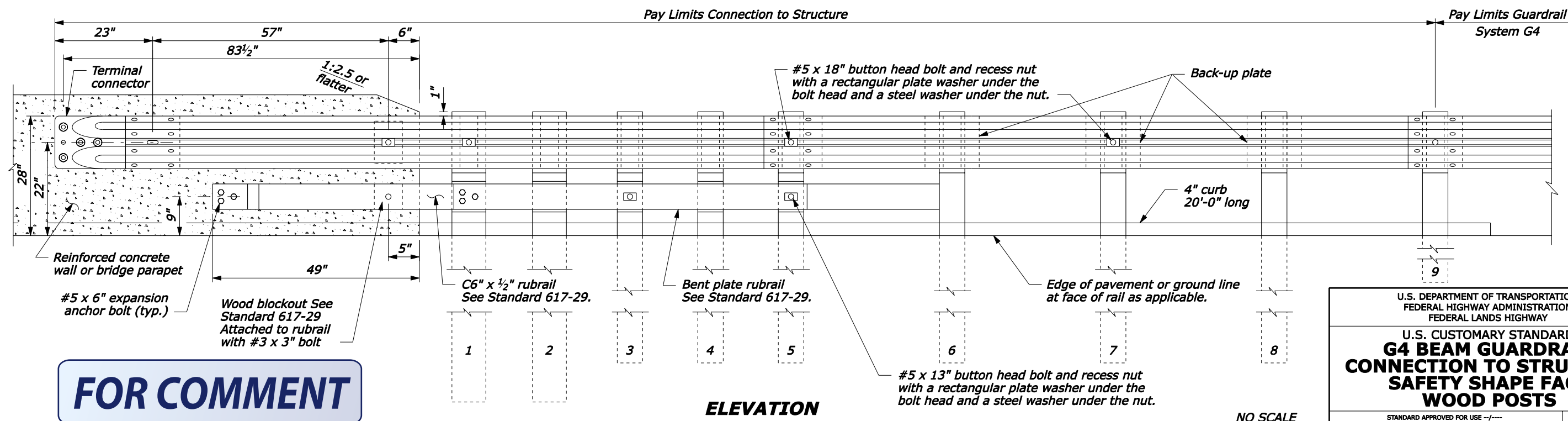
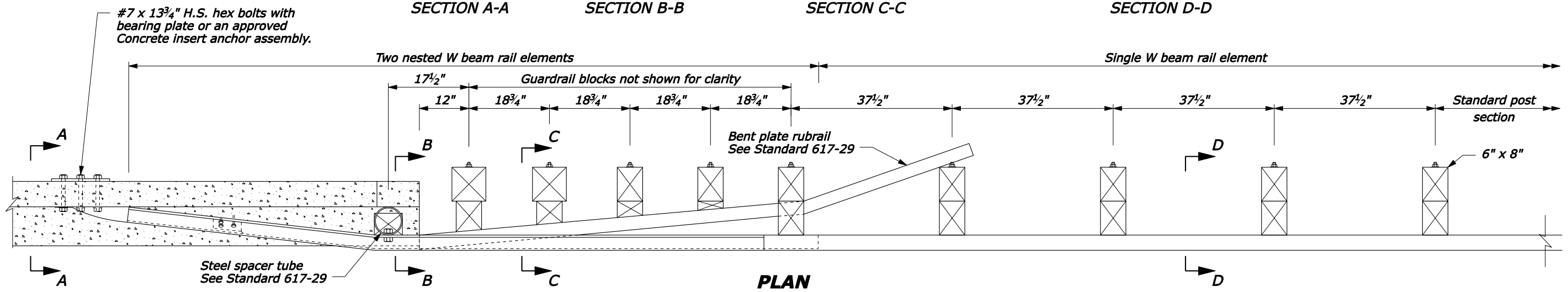


- NOTE:**
1. Posts 1 through 5 require an additional hole to attach lower wood blocks and/or rubrail.
 2. Center drill wood blocks for rubrail located on posts 1 through 4. Secure blocks to posts 2 and 4. Secure rubrail and blocks to posts 1, 3, and 5 using M16 carriage bolts.
 3. Do not bolt W beam to posts and blocks at posts 2 and 4.
 4. Reinforced concrete wall or bridge parapet must be capable of developing a 59.6 kip pull out strength.



FOR COMMENT

U.S. DEPARTMENT OF TRANSPORTATION
 FEDERAL HIGHWAY ADMINISTRATION
 FEDERAL LANDS HIGHWAY

**U.S. CUSTOMARY STANDARD
 G4 BEAM GUARDRAIL
 CONNECTION TO STRUCTURE
 SAFETY SHAPE FACE
 WOOD POSTS**

STANDARD APPROVED FOR USE --/---

REVIS: 6/2004
 DRAFT: 6/2004

STANDARD
 617-27

23-Jun-2004 04:07 PM
 F:\StdDraw\Draft\18161727.dgn [US Customary]