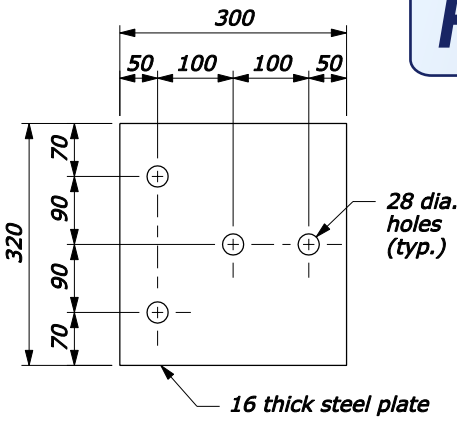
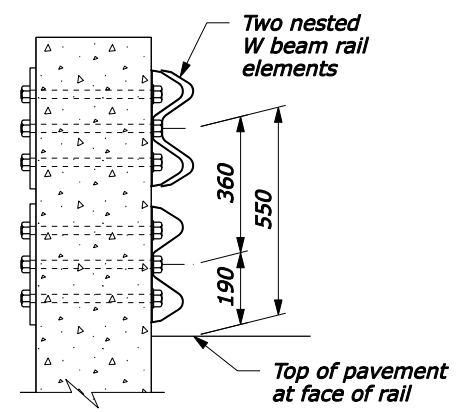


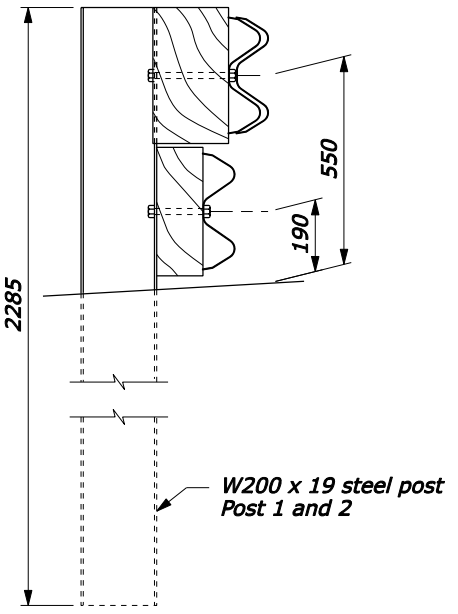
FOR COMMENT



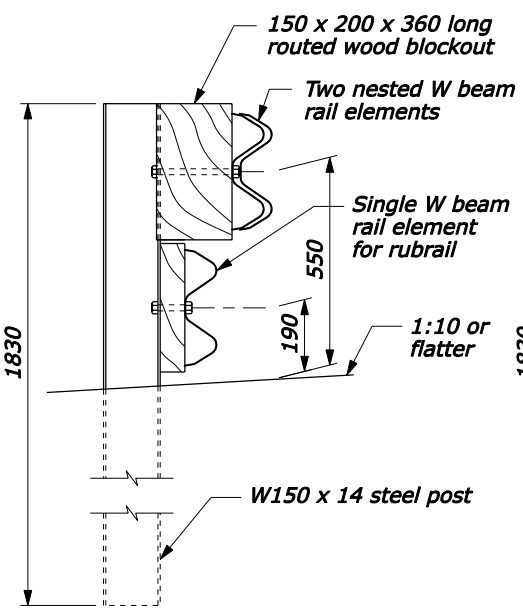
BEARING PLATE



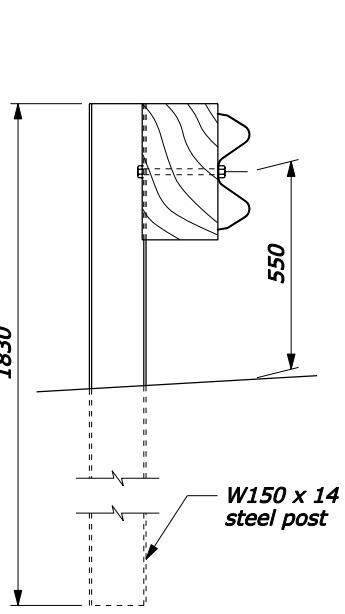
SECTION A-A



SECTION B-B

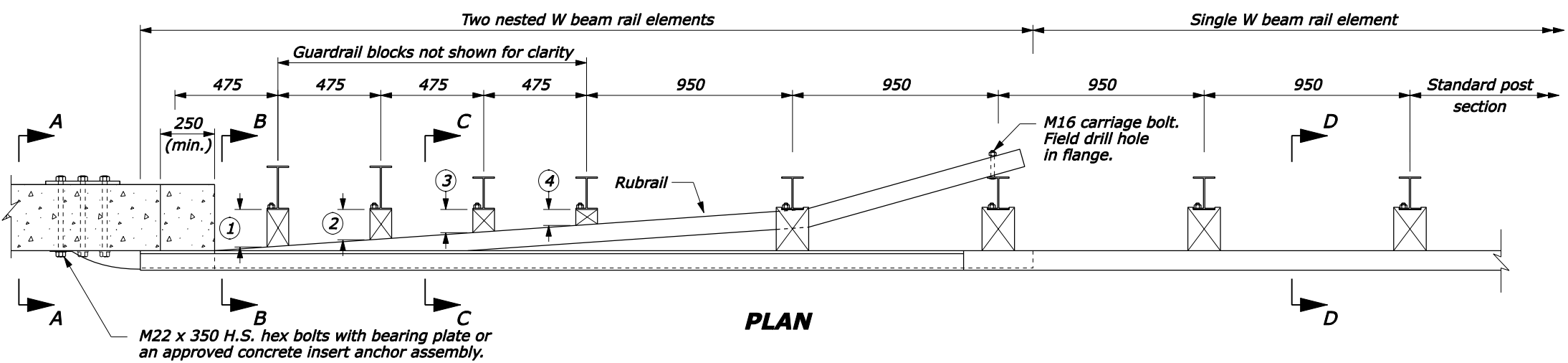


SECTION C-C



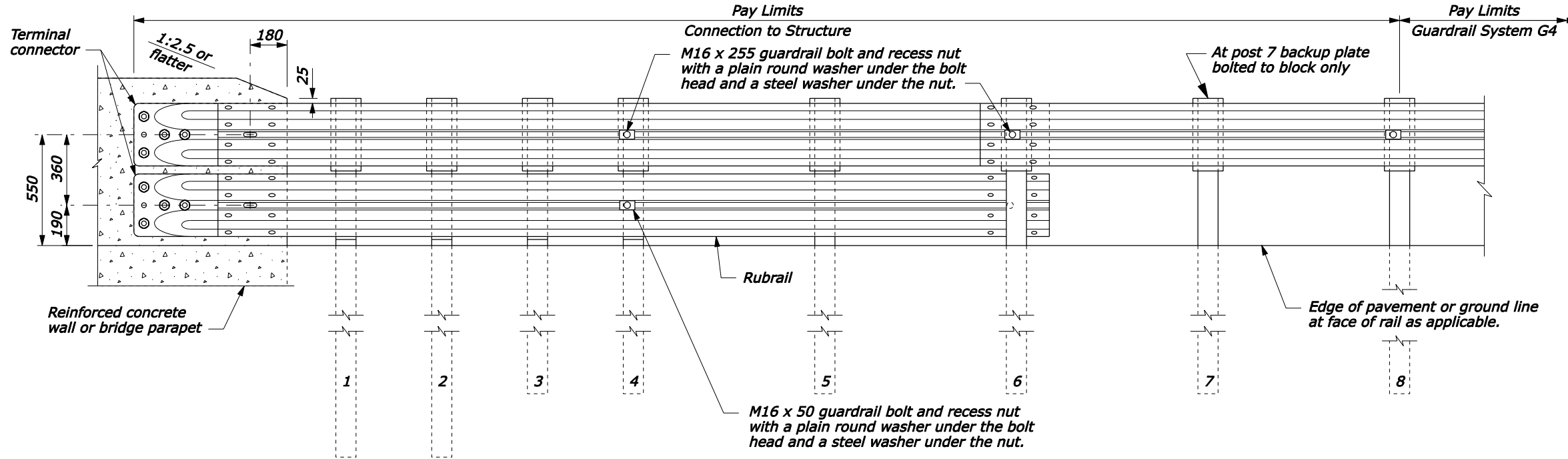
SECTION D-D

- NOTE:**
- The rubrail may be shop bent in the last 950 mm to facilitate installation.
 - Offset drill wood blocks for rubrail to sit squarely on the post flange posts 1 through 4. Secure blocks to post 1 through 3 with M16 carriage bolts.
 - Posts 1, 2, 3, 4 and 6 require an additional hole to attach lower wood blocks and/or the rubrail.
 - Do not bolt nested W beam or rubrail W beam to posts and blocks on posts 1, 2, 3 and 5. Bolt blocks directly to posts.
 - Reinforced concrete wall or bridge parapet must be capable of developing a 265 kN pull out strength.
 - Furnish hardware in the metric sizes shown. Equivalent US Customary sizes may be used when metric sizes are not available.
 - Dimensions without units are millimeters.

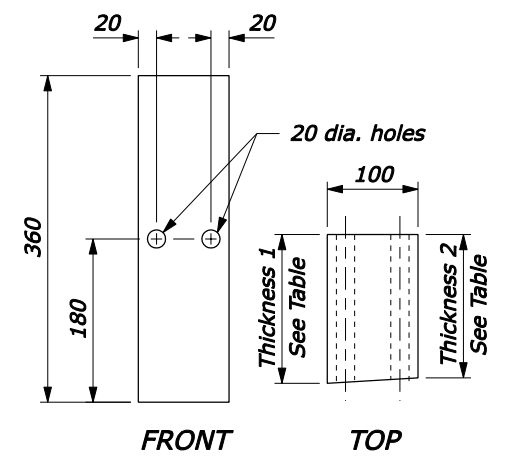


PLAN

WOOD BLOCKS FOR RUBRAIL		
POST	THICKNESS 1	THICKNESS 2
①	164	158
②	131	125
③	99	93
④	67	61
⑤	NO BLOCK	NO BLOCK



ELEVATION



WOOD BLOCK FOR RUBRAIL

U.S. DEPARTMENT OF TRANSPORTATION
FEDERAL HIGHWAY ADMINISTRATION
FEDERAL LANDS HIGHWAY

**METRIC STANDARD
G4 W-BEAM GUARDRAIL
CONNECTION TO
VERTICAL FACE STRUCTURE
STEEL POSTS**

STANDARD APPROVED FOR USE 3/1996

REVISOR: 5/2005

STANDARD M617-26

NO SCALE

5/2/2005 F:\StanDraw\Draw\18\181726.dgn [Metric]