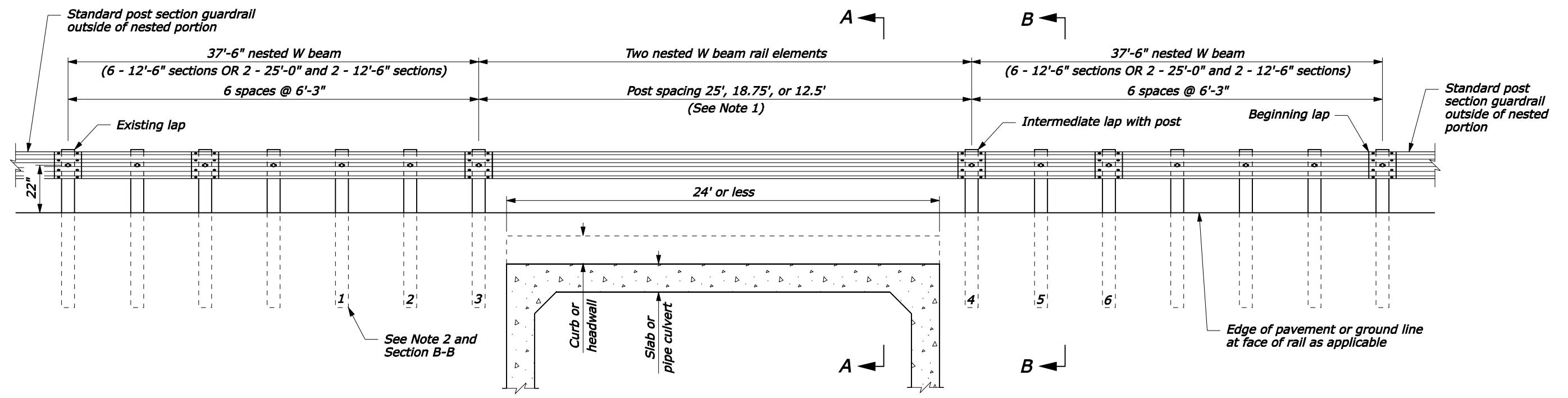
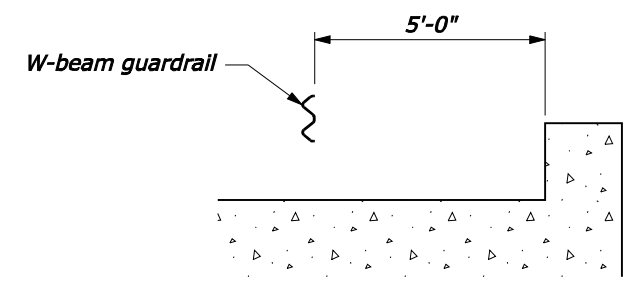


NOTE:

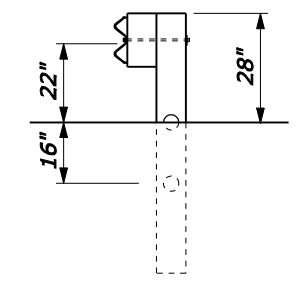
- 25'-0" rail lengths may be used to eliminate the intermediate lap without a post. Do not place a lap without a post unless needed due to length of gap.
- Posts 1 thru 6 are CRT posts with two blockouts. See Section B-B for details.
- Install the back face of the nested guardrail a minimum of 5'-0" from the face of the curb-like headwall.



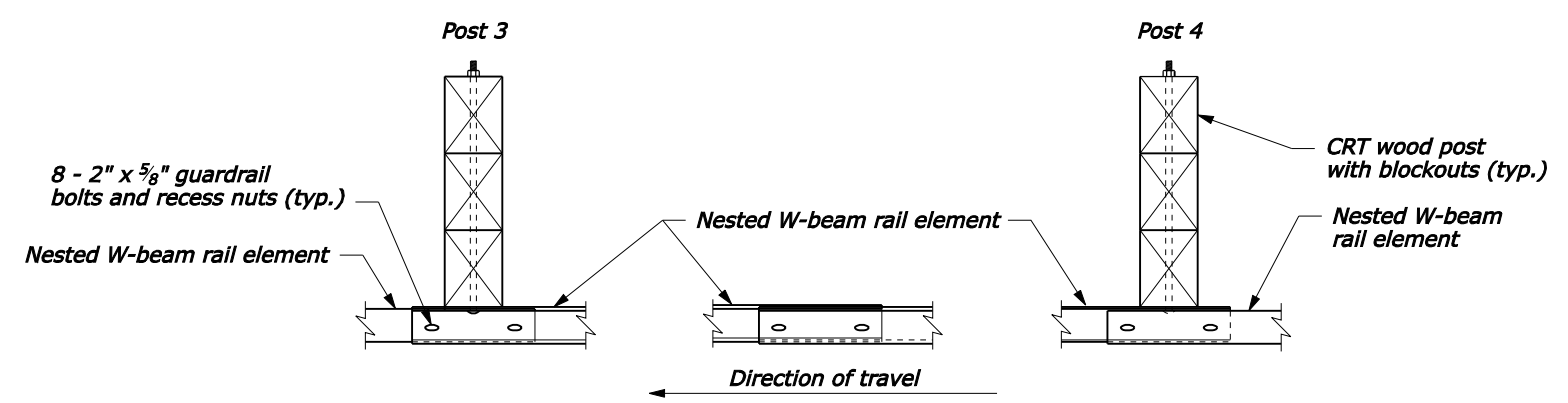
ELEVATION



SECTION A-A
(See Note 3)



SECTION B-B
(See Note 2)



ENDING LAP

INTERMEDIATE LAP WITHOUT POST

BEGINNING LAP

NO SCALE

U.S. DEPARTMENT OF TRANSPORTATION FEDERAL HIGHWAY ADMINISTRATION FEDERAL LANDS HIGHWAY	
U.S. CUSTOMARY STANDARD G4 W-BEAM GUARDRAIL LONG SPAN, DOUBLE-NESTED GUARDRAIL SYSTEM	
STANDARD APPROVED FOR USE 1/1994 REVISED: 4/1994 6/2005	STANDARD 617-24

06-Nov-2007 07:57 AM P:\198.145.186.2\std. plan\std. plan\std61724.dgn [US Customary]