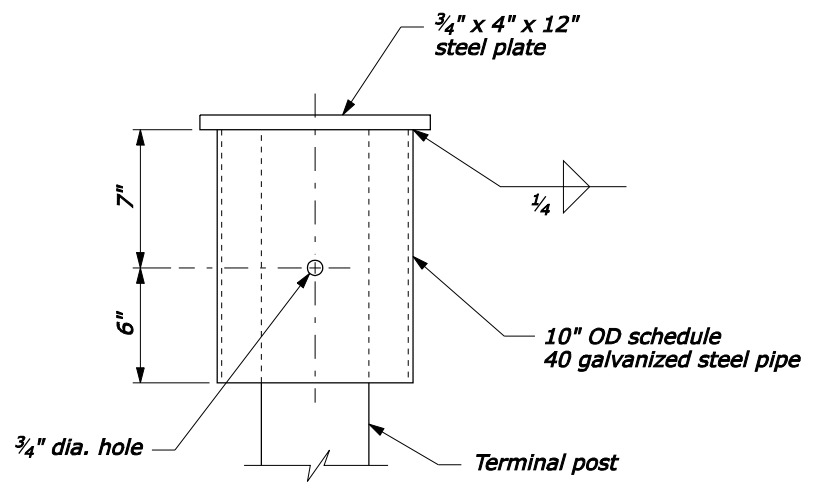


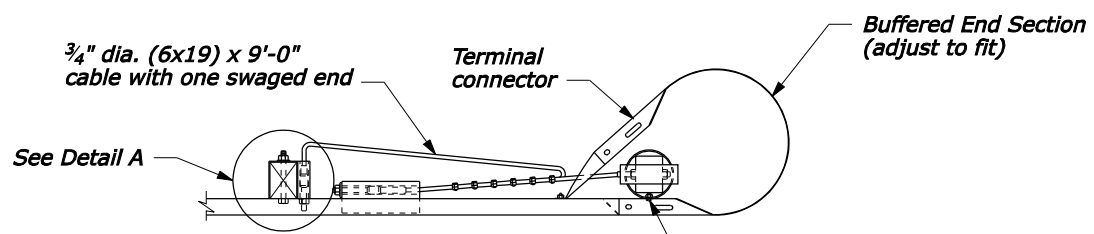
DETAIL A



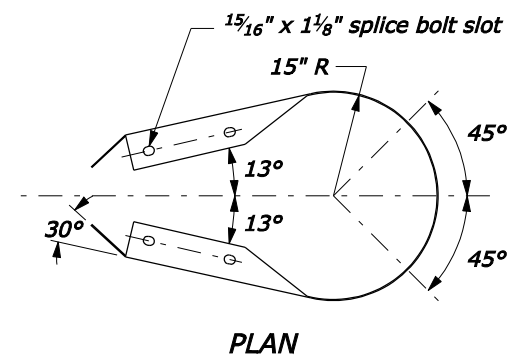
DETAIL B

**NOTE:**

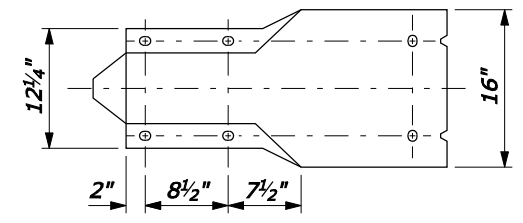
1. See Standard 617-15 for other details.
2. Dimensional tolerances not shown or implied are intended to be those consistent with the proper functioning of the part, including its appearance, and accepted manufacturing practices.



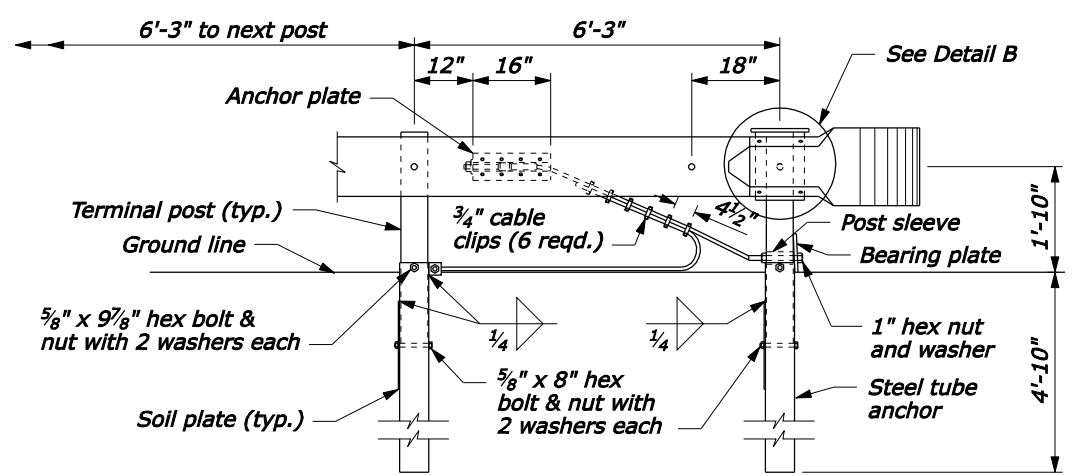
PLAN



PLAN



ELEVATION  
BUFFERED END SECTION



ELEVATION  
ANCHORAGE ASSEMBLY

NO SCALE

U.S. DEPARTMENT OF TRANSPORTATION FEDERAL HIGHWAY ADMINISTRATION FEDERAL LANDS HIGHWAY	
U.S. CUSTOMARY STANDARD <b>CRG W-BEAM GUARDRAIL CABLE RELEASING TERMINAL TYPE CRT, WOOD POSTS</b>	
STANDARD APPROVED FOR USE 1/1994	STANDARD
REVISED: 4/1994 6/2005	617-22
DRAFT 3/2006	

F:\StdDraw\std61722.dgn [US Customary] 20-Mar-2006 11:12 AM