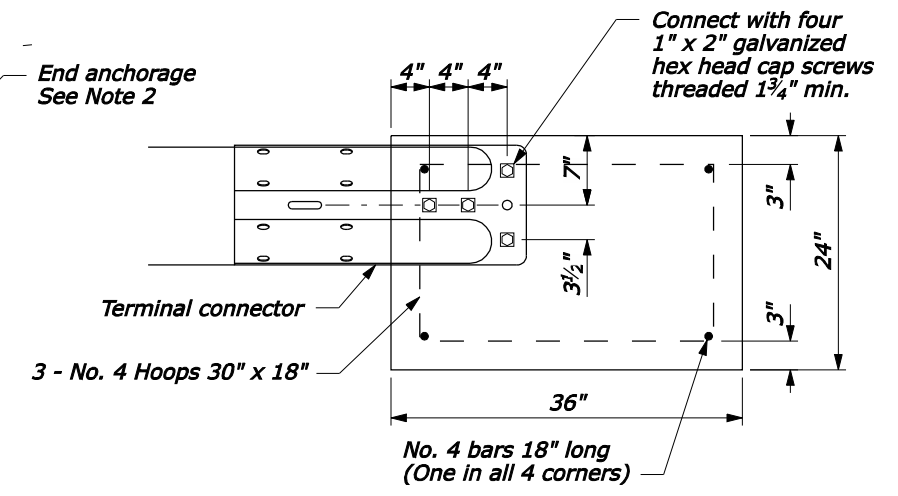
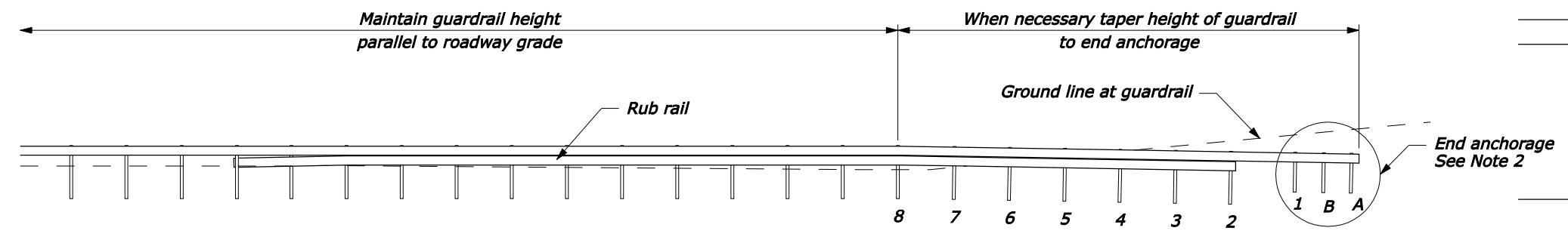
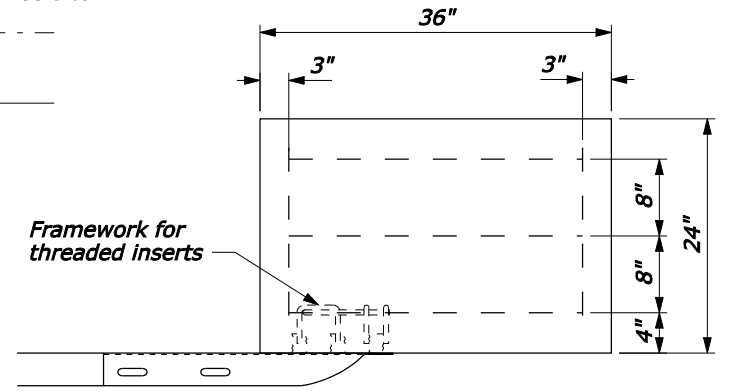


- NOTE:**
1. See sheet 2 of 2 for post and block details.
 2. When alternate concrete block anchor end terminal is used, remove Posts A and B.
 3. Add rub rail when clearance between bottom of rail and ground surface exceeds 17½".

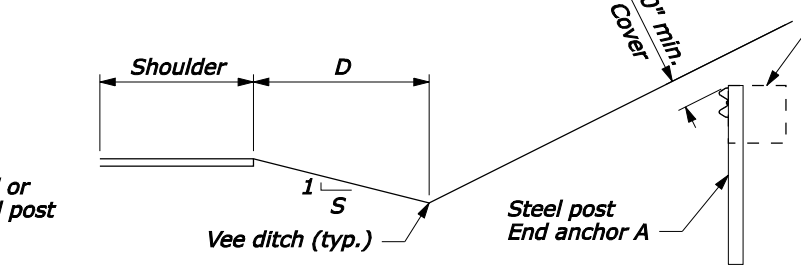
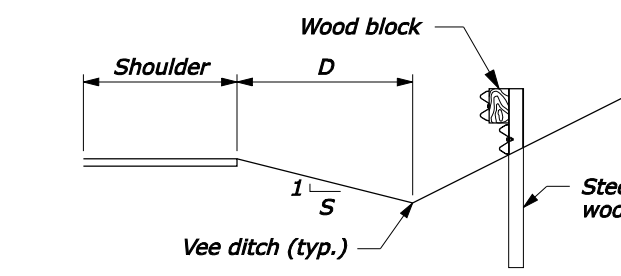
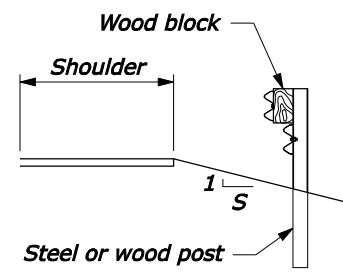
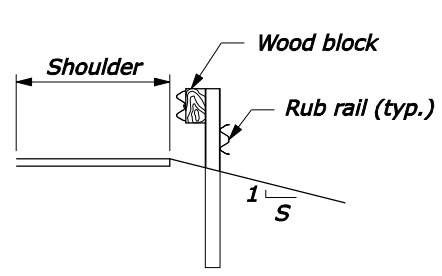


**ALTERNATE
CONCRETE BLOCK ANCHOR**

| GUARDRAIL FLARE | | |
|------------------|-------|-------|
| DESIGN SPEED MPH | F | |
| | S = 4 | S = 6 |
| 70 | 13 | 15 |
| 60 | 13 | 13 |
| 55 | 13 | 12 |
| 50 | 13 | 11 |
| 45 | 13 | 10 |
| 35 | 13 | 9 |
| ≤ 30 | 13 | 7 |

| CROSS SECTION DIMENSIONS | |
|--------------------------|-----------------|
| DITCH SLOPE (S) | DITCH WIDTH (D) |
| 4 | 6'-0" |
| 6 | 8'-10" |

| POST OFFSETS FROM VEE DITCH | |
|-----------------------------|----------|
| POST | DISTANCE |
| A | 8' |
| #2 | 5' |
| #4 | 3' |
| #8 | 0 |



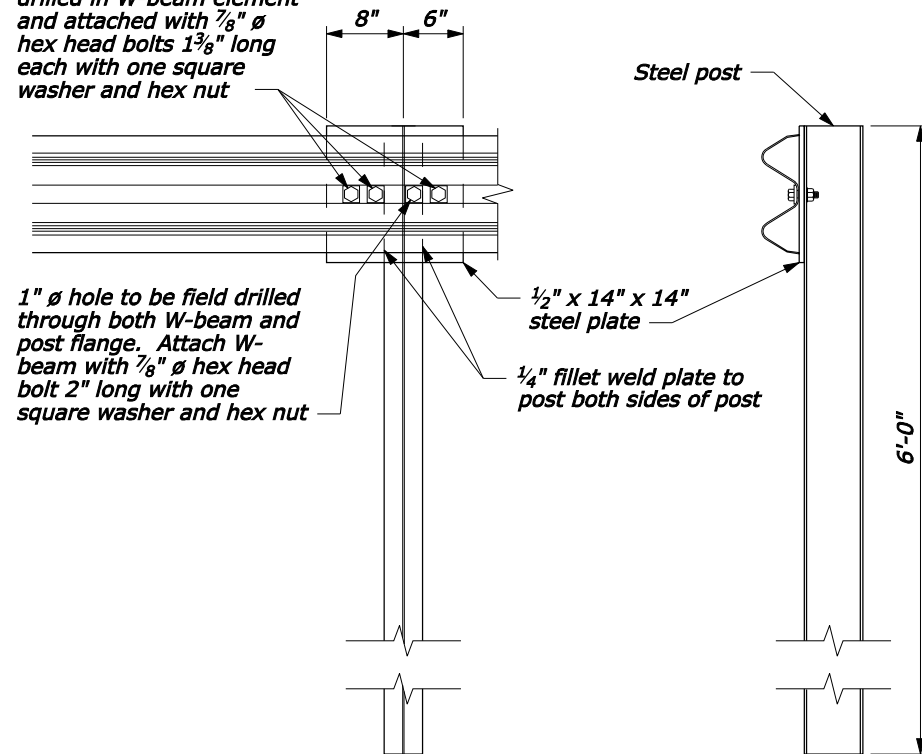
NO SCALE

U.S. DEPARTMENT OF TRANSPORTATION
FEDERAL HIGHWAY ADMINISTRATION
FEDERAL LANDS HIGHWAY

U.S. CUSTOMARY STANDARD
**G4 W-BEAM GUARDRAIL
BACK SLOPE ANCHOR TERMINAL
TYPE G4-BAT**
Sheet 1 of 2

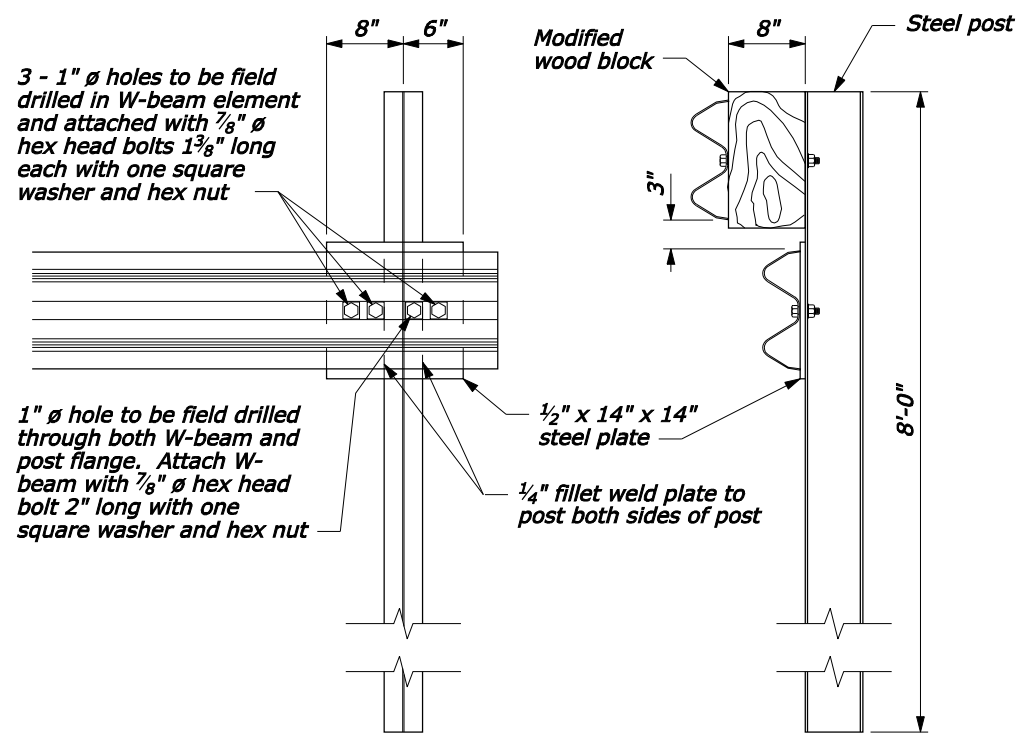
| | |
|----------------------------------|-----------------|
| STANDARD APPROVED FOR USE 1/1994 | STANDARD 617-17 |
| REVISED: 4/1994 6/2005 | |
| DRAFT: 11/2007 | |

3 - 1" ϕ holes to be field drilled in W-beam element and attached with $\frac{7}{8}$ " ϕ hex head bolts $1\frac{3}{8}$ " long each with one square washer and hex nut

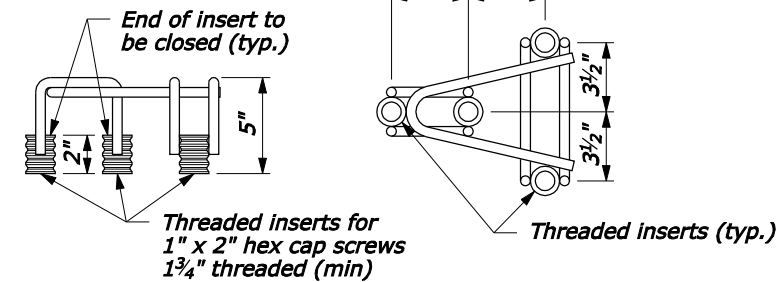


SPECIAL RAIL TO POST CONNECTION AT POSTS A, B, AND 1

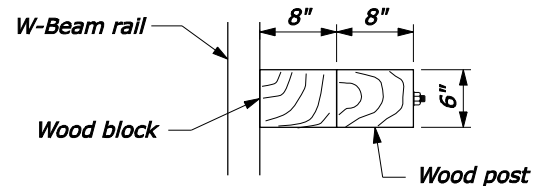
3 - 1" ϕ holes to be field drilled in W-beam element and attached with $\frac{7}{8}$ " ϕ hex head bolts $1\frac{3}{8}$ " long each with one square washer and hex nut



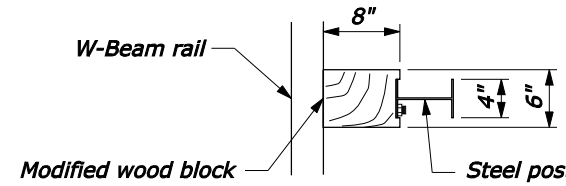
SPECIAL RUBRAIL TO POST CONNECTION AT POST 2



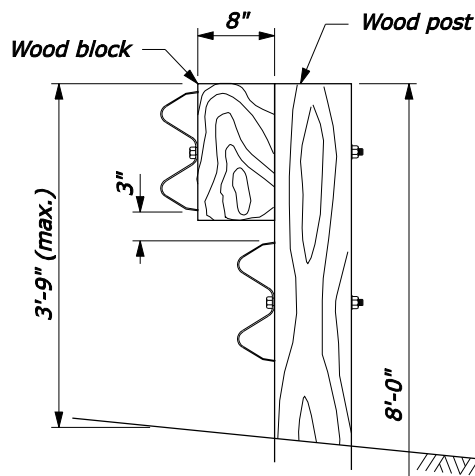
FRAMEWORK FOR THREADED INSERTS



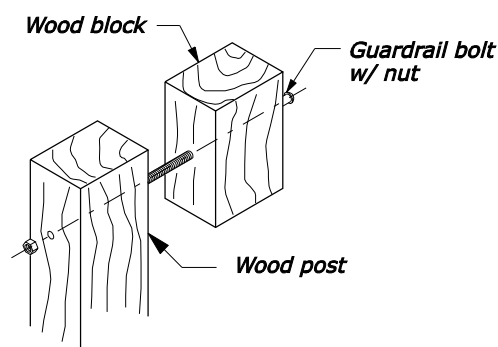
PLAN



PLAN

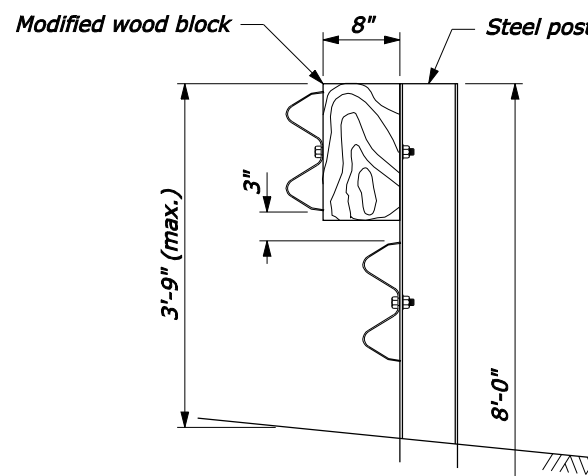


ELEVATION



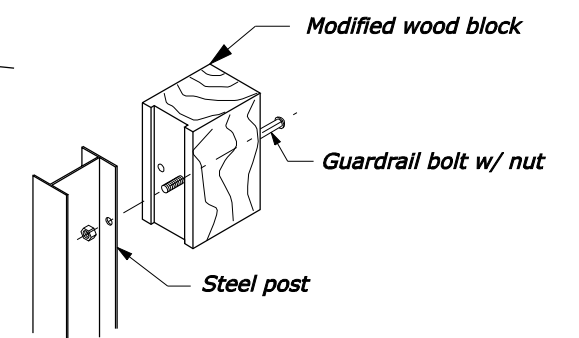
EXPLODED VIEW
(Rail and washer not shown)

WOOD POST AND BLOCK DETAIL



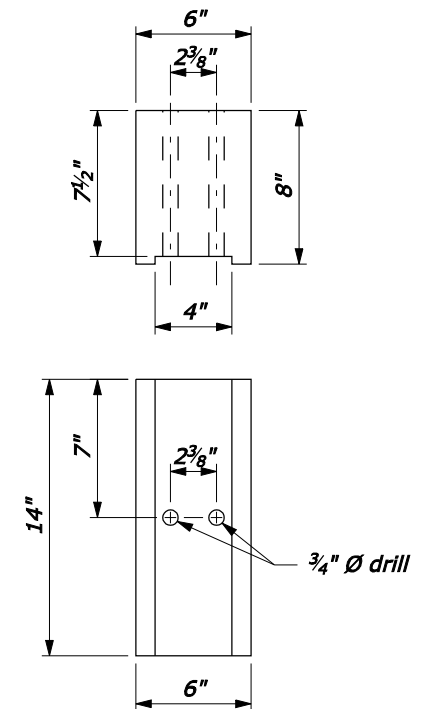
ELEVATION

STEEL POST AND BLOCK DETAIL



EXPLODED VIEW
(Rail and washer not shown)

MODIFIED WOOD BLOCK



NOTE:

1. See sheet 1 of 2 for terminal layout.
2. For posts #3 and higher match post material of adjacent guardrail run unless otherwise noted.

NO SCALE

| | |
|--|----------|
| U.S. DEPARTMENT OF TRANSPORTATION FEDERAL HIGHWAY ADMINISTRATION FEDERAL LANDS HIGHWAY | |
| U.S. CUSTOMARY STANDARD G4 W-BEAM GUARDRAIL BACK SLOPE ANCHOR TERMINAL TYPE G4-BAT Sheet 2 of 2 | |
| STANDARD APPROVED FOR USE 1/1994 | STANDARD |
| REVISED: 4/1994 6/2005 DRAFT: 11/2007 | 617-17 |