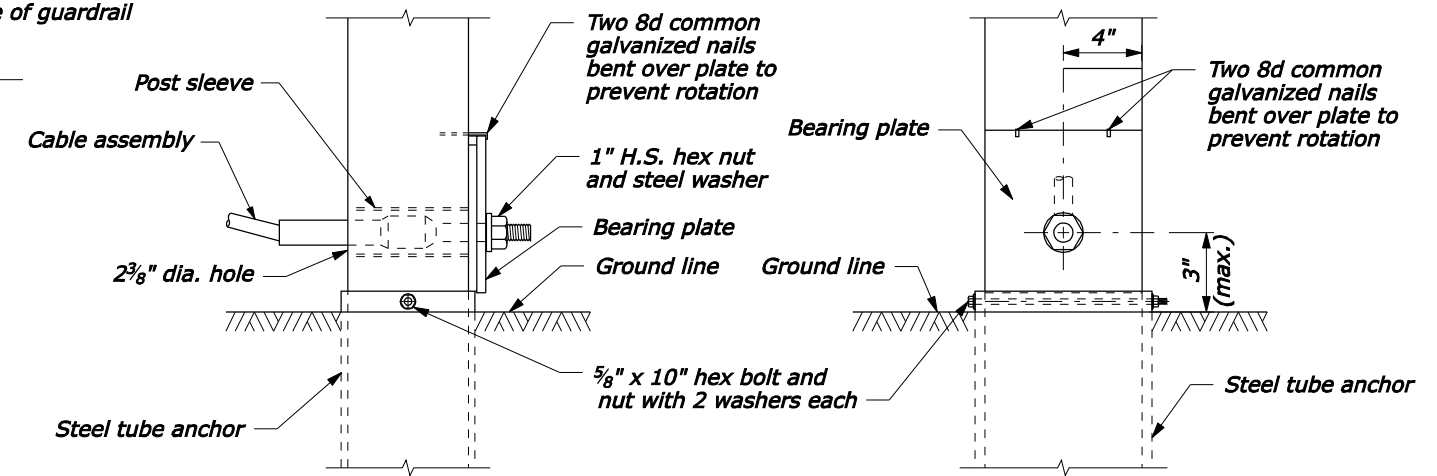


PLAN

NOTE:

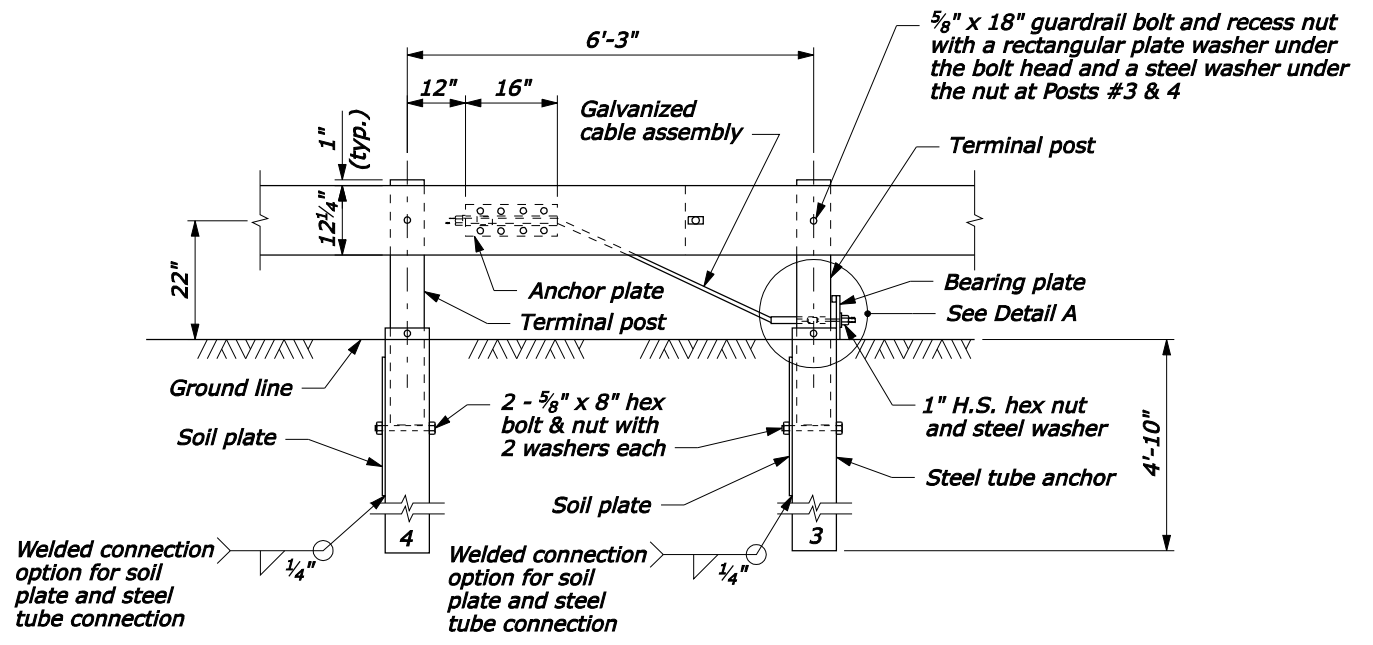
1. Pay limits for terminal section type LST include the in-line anchorage assembly at the last two posts of G4 guardrail.
2. Use offset from face of rail to slope break as shown unless otherwise shown on plan.
3. Posts 1 and 2 are standard guardrail posts. See Standard 617-10 for details.
4. See Standard 617-15 for other details.
5. Do not use LST terminal where speeds are in excess of 45 MPH.



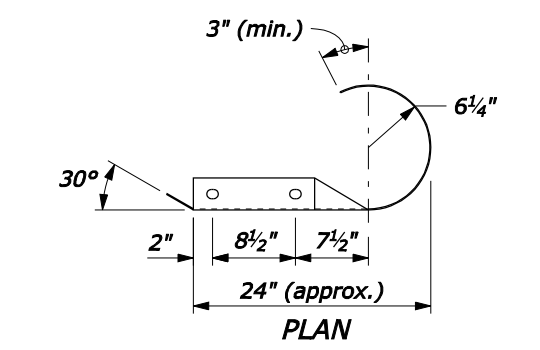
FRONT

RIGHT SIDE

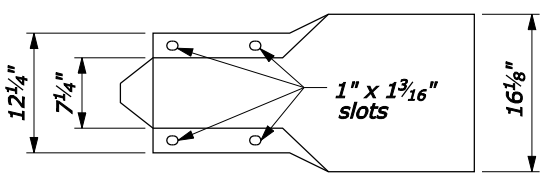
DETAIL A



IN-LINE ANCHORAGE ASSEMBLY ELEVATION



PLAN



ELEVATION ROUND END SECTION

NO SCALE

U.S. DEPARTMENT OF TRANSPORTATION FEDERAL HIGHWAY ADMINISTRATION FEDERAL LANDS HIGHWAY	
U.S. CUSTOMARY STANDARD G4-W BEAM GUARDRAIL LOW SPEED TERMINAL TYPE LST, WOOD POSTS	
STANDARD APPROVED FOR USE 6/2005	STANDARD 617-14
REVISED: DRAFT: 2/2007	

F:\StdDraw\std61714.dgn [US Customary] 26-Feb-2007 09:26 AM