



Earth System Research Laboratory

Serving Society through Science

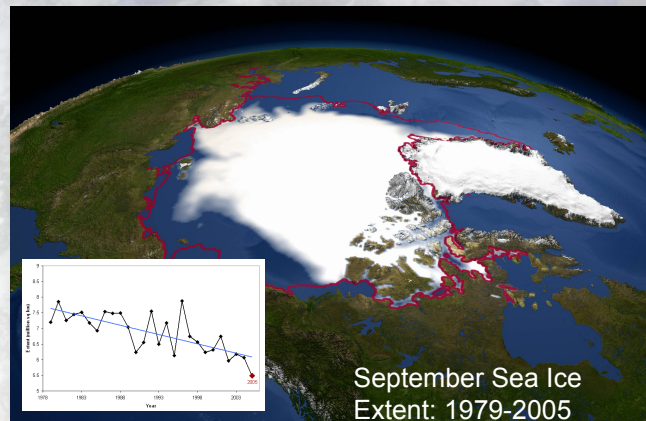
Climate Change in the Arctic - A Bellwether for the Planet?

<http://www.esrl.noaa.gov/about/dedication>

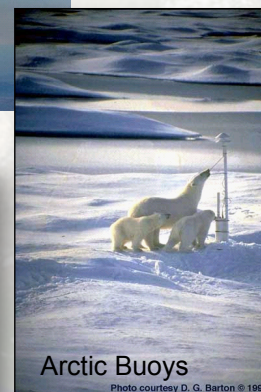
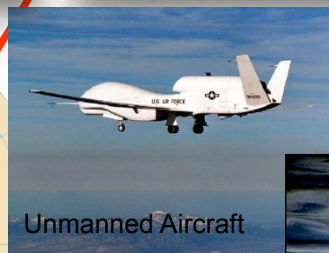
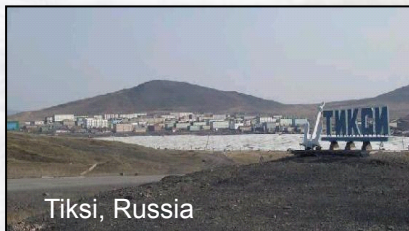
Session Chair: Taneil Uttal, Taneil.Uttal@noaa.gov

The Arctic is on the Fast Track of Change

Change in the Arctic is being observed in surface temperatures, the extent and volume of sea ice, the Greenland ice cap, glaciers, permafrost, distributions of biological systems and human societies. Long considered just a “climate canary” or indicator of planetary climate change, the Arctic might in fact be a primary driver of global climate.



Arctic issues are Global and International



Monitor and Understand

ESRL global networks, intensive observatories, and aircraft/buoy programs will collect measurements over decades to untangle Arctic-specific issues.