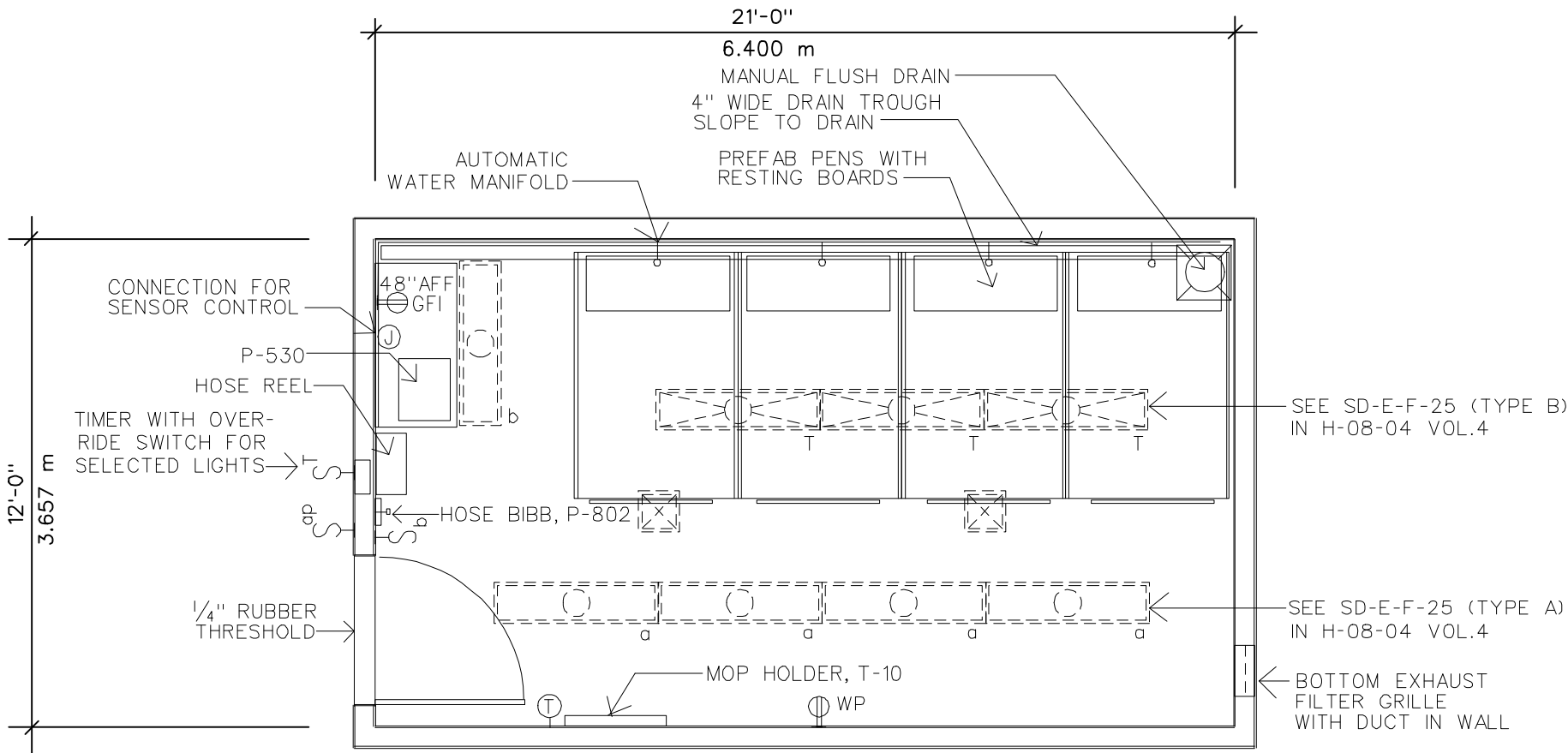


26 February 1993



- NOTE: REMOVABLE DIVIDER PANELS OPTIONAL
- NOTE: LOCATE MANUAL FLUSH DRAIN VALVE ALONG PLUMBING WALL
- NOTE: HOSE BIBB TO BE LOCATED 24" ABOVE FINISH FLOOR
- NOTE: FOR ALL P AND T EQUIPMENT SEE H-08-04 VOL.1

NOTE: CONNECT THE AUTOMATIC WATER MANIFOLD TO A PRESSURE CONTROL PANEL OUTSIDE THE ROOM. ONE PANEL CAN SERVE SEVERAL ANIMAL ROOMS.

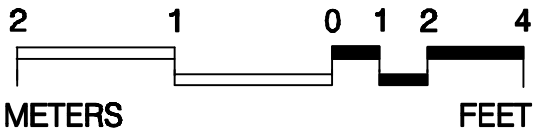
NOTE: BACK WALL SHOULD BE CLAD WITH STAINLESS STEEL WHEN PEN ABUTS BACK WALL

NOTE: TO FACILITATE TROUGH MAINTENANCE, AN 18" WALK SPACE MAY BE ALLOWED BETWEEN WALL AND TROUGH

NOTE: PROVIDE ONE GROUND FAULT INTERRUPTER (GFI) RECEPTACLE, TO SUBFEED OTHER RECEPTACLES.

**252 NSF**  
**23.411 m<sup>2</sup>**

# Animal Room (Large Animal Conventional Housing)



# Equipment & Utility Plan

# Animal Room (Large Animal Conventional Housing)

# Design Standards

## ARCHITECTURAL

Floor Area	252 NSF	Wall Finish	CMU (SC)
Ceiling	PCP	Wainscot	-
Ceiling Height	9'-0"	Base	ERF
Slab Depression	-	Floor Finish	ERF
Notes:		Lead Lining	-

## SPECIAL EQUIPMENT

NONE

## ELECTRICAL

### Lighting

General	20-60 FC, 3.0 W/SF
Special	-
Emergency	*

Notes:

\*TIMER CONTROLLED LIGHTS

### Power

General	400 W
Special	-
Emergency	-

## COMMUNICATIONS

Telephone	-	ADP	-
Intercom	-	Radio	-
Public Address	-	Other	-

Notes:

## HEATING, VENTILATING AND AIR CONDITIONING

AC Load Lights	2.3 W/SF
AC Load Equipment	0.7 W/SF
Number of People	1 + ANIMALS
Noise Criteria	NC-40
Room Pressure	NEGATIVE
Dry Bulb Temp Cooling (F)	65
Dry Bulb Temp Heating (F)	85
Minimum Air Changes per Hour	15 (SA)
Minimum % Outside Air	100
100% Exhaust Air	YES
Special Exhaust	-
Steam	-
Relative Humidity - Cooling	60* %
Relative Humidity - Heating	30* %

Notes:

\*PLUS/MINUS 5%

SEE NARRATIVE "ENVIRONMENTAL MONITORING" FOR ALARMS

## PLUMBING AND MEDICAL GASES

Sanitary Drain	YES	Cold Water	YES
Acid Waste	-	Hot Water	YES
Silver Recovery	-	Reagent Water	-
Medical Air	-	Laboratory Air	-
Medical Vacuum	-	Laboratory Vacuum	-
Oxygen	-	Fuel Gas	-
Nitrous Oxide	-	Anesthesia Evac	-

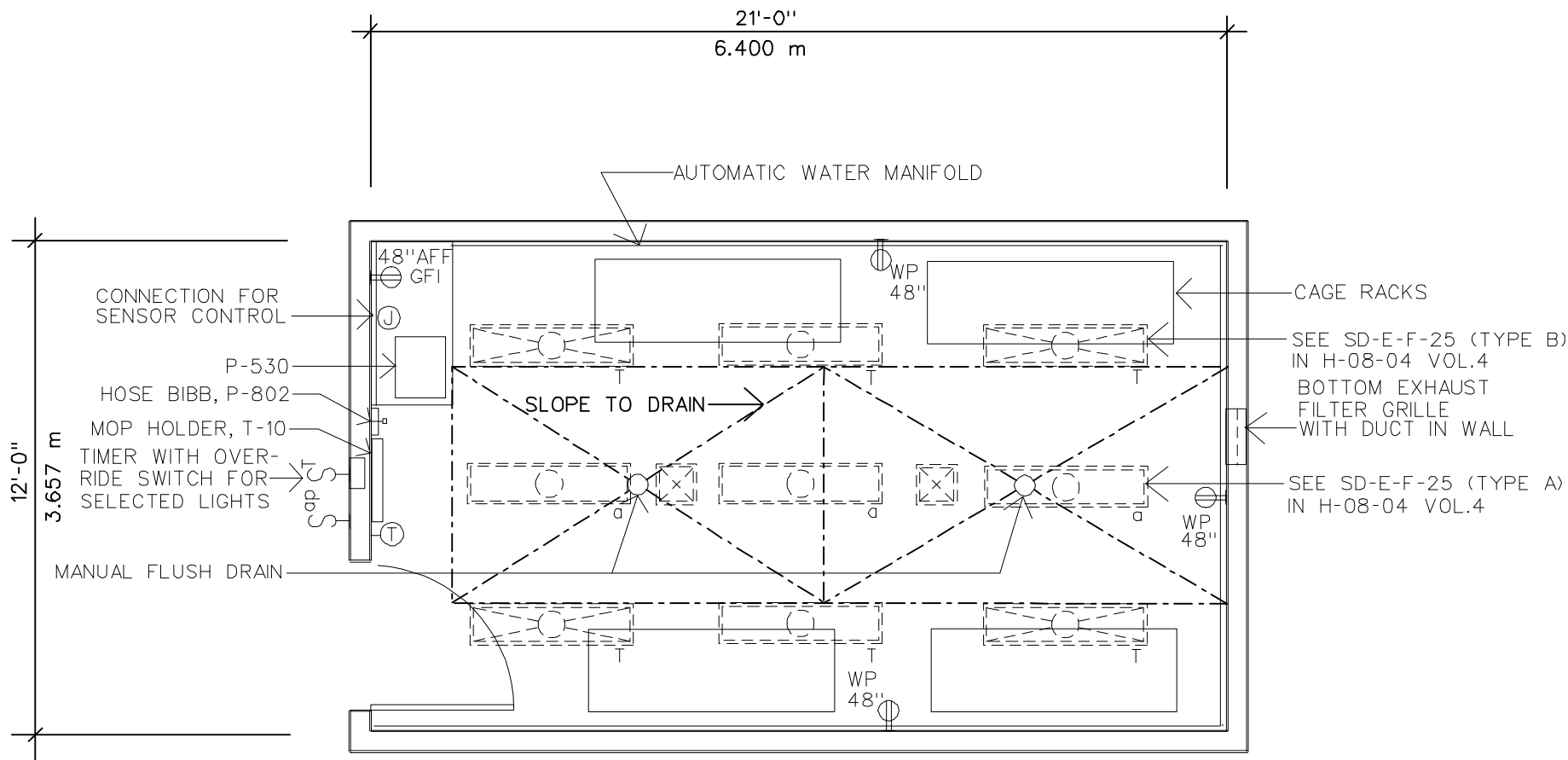
Notes:

## Animal Room (Large Animal Conventional Housing)

## Equipment Guide List

SYMBOL	QTY	AI	DESCRIPTION
P-530	1	CC	SINK, CORROSION RESISTING STEEL, SINGLE COMPARTMENT, WALL HUNG, WITH SENSOR CONTROL, 18" X 15" X 10" DEEP WITH 8" SPLASHBACK, 24" X 48" OVERALL WITH DRAINBOARD (H-08-1, MCS 15450)
P-802	1	CC	HOSE BIBB, COMBINATION FAUCET, 24" OFF FLOOR, WALL MOUNTED, CONCEALED SUPPLY PIPES (H-08-1, MCS 15450; H-08-4, SD 4.2)
	1	VV	HOSE REEL
T-10	1	CC	RACK, MOP, WALL MOUNTED (H-08-1, MCS 10360; H-08-4, SD 64B & 66)
	AR	CC	RECEPTACLE, ELECTRICAL, DUPLEX, 120 VOLT, 20 AMP, WITH WEATHERPROOF COVER PLATE (H-08-1, MCS 16140; H-08-3, CS 801-3)
	1	CC	RECEPTACLE, ELECTRICAL, DUPLEX, 120 VOLT, 20 AMP, WITH GROUND FAULT INTERRUPTER (H-08-1, MCS, 16140; H-08-3, CS 801-3)
			NOTE: PROVIDE ONE GROUND FAULT INTERRUPTER (GFI) RECEPTACLE, TO SUBFEED OTHER RECEPTACLES.
	AR	CC	DRAIN, FLOOR, MANUAL, FLUSH VALVE ON WALL (H-08-1, MCS 15400)
	AR	VV	CAGES
			-OR-
			THE FOLLOWING ENCLOSURE FOR RUNS/PENS IS MODIFIABLE TO ACCOMMODATE VARIATIONS IN ANIMAL POPULATION (MUST BE 24 - 30 SF).
			ALUMINUM OR STAINLESS STEEL ANIMAL ENCLOSURE COMPONENTS:
	AR	VV	FRONT PANELS, WITH HORIZONTALLY SLIDING GATES, 4' WIDE X 7' HIGH
	AR	VV	DIVIDER PANELS, LOWER PORTION SHEET AND UPPER PORTION ROD, WITH ADJUSTABLE LEGS, 6' LONG X 7' HIGH
	AR	VV	END PANELS, ALL SHEET CONSTRUCTION, WITH ADJUSTABLE LEGS, 4' LONG X 7' HIGH
	AR	VV	FLOORS, 3/4" WIDE FLOOR MEMBER SPACED, 3/4" APART, 2 (4' WIDE X 4' WIDE SECTIONS) REST ON ANGLES WELDED TO DIVIDER PANELS, REMOVABLE
			NOTE: FLOOR MEMBERS SHOULD BE HEAVY DUTY EXPANDED METAL, PLASTIC COATED, MOUNTED ON CROSS MEMBERS, 6" ABOVE FLOOR.
	AR	VV	FEEDERS, STAINLESS STEEL, FOR SLIDING GATES
	AR	VV	RESTING BOARDS, 3/4" POLYPROPYLENE BOARD TRIMMED IN A SUITABLE MATERIAL TO PREVENT ANIMALS FROM CHEWING ON THE BOARDS, I.E., ALUMINUM, APPROXIMATELY, 16" WIDE X 48" LONG, MOUNT IN REAR OF EACH RUN
	AR	VV	AUTOMATIC WATER MANIFOLD, STAINLESS STEEL PIPE WITH ADJUSTABLE VALVE HEIGHT
			NOTE: IF ROOMS INCLUDE CAGE RACKS, PROVIDE QUICK DISCONNECT FROM AUTOMATIC WATER MANIFOLD.
			NOTE: EQUIPMENT FOR SMALL ANIMAL CONVENTIONAL HOUSING IS SAME AS ABOVE EXCEPT NO HOSE REEL OR DRAIN TROUGH IS REQUIRED.

26 February 1993



NOTE: SEE EQUIPMENT GUIDE LIST FOR LARGE ANIMAL CONVENTIONAL HOUSING

NOTE: HOSE BIBB TO BE LOCATED 24" ABOVE FINISH FLOOR

NOTE: 1/4" PER FOOT FLOOR SLOPE MAXIMUM

NOTE: CONNECT THE AUTOMATIC WATER MANIFOLD TO A PRESSURE CONTROL PANEL OUTSIDE THE ROOM. ONE PANEL CAN SERVE SEVERAL ANIMAL ROOMS.

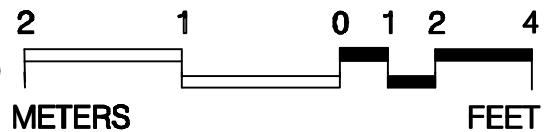
NOTE: LOCATE MANUAL FLUSH DRAIN VALVE ALONG PLUMBING WALL

NOTE: FOR ALL P AND T EQUIPMENT SEE H-08-04 VOL.1

NOTE: PROVIDE ONE GROUND FAULT INTERRUPTER (GFI) RECEPTACLE, TO SUBFEED OTHER RECEPTABLES.

**252 NSF**  
**23.411 m<sup>2</sup>**

# Animal Room (Small Animal Conventional Housing)



# Equipment & Utility Plan

# Animal Room (Small Animal Conventional Housing) Design Standards

## ARCHITECTURAL

Floor Area	252 NSF	Wall Finish	CMU (SC)
Ceiling	PCP	Wainscot	-
Ceiling Height	9'-0"	Base	ERF
Slab Depression	-	Floor Finish	ERF
Notes:		Lead Lining	-

## SPECIAL EQUIPMENT

NONE

## ELECTRICAL

### Lighting

General	20-60 FC, 3 W/SF
Special	-
Emergency	*

Notes:

\*TIMER CONTROLLED LIGHTS

### Power

General	400 W
Special	-
Emergency	-

## COMMUNICATIONS

Telephone	-	ADP	-
Intercom	-	Radio	-
Public Address	-	Other	-

Notes:

## HEATING, VENTILATING AND AIR CONDITIONING

AC Load Lights	2.6 W/SF
AC Load Equipment	0.8 W/SF
Number of People	1 + ANIMALS
Noise Criteria	NC-40
Room Pressure	NEGATIVE
Dry Bulb Temp Cooling (F)	65
Dry Bulb Temp Heating (F)	85
Minimum Air Changes per Hour	15 (SA)
Minimum % Outside Air	100
100% Exhaust Air	YES
Special Exhaust	-
Steam	-
Relative Humidity - Cooling	60* %
Relative Humidity - Heating	30* %

Notes:

\*PLUS/MINUS 5%

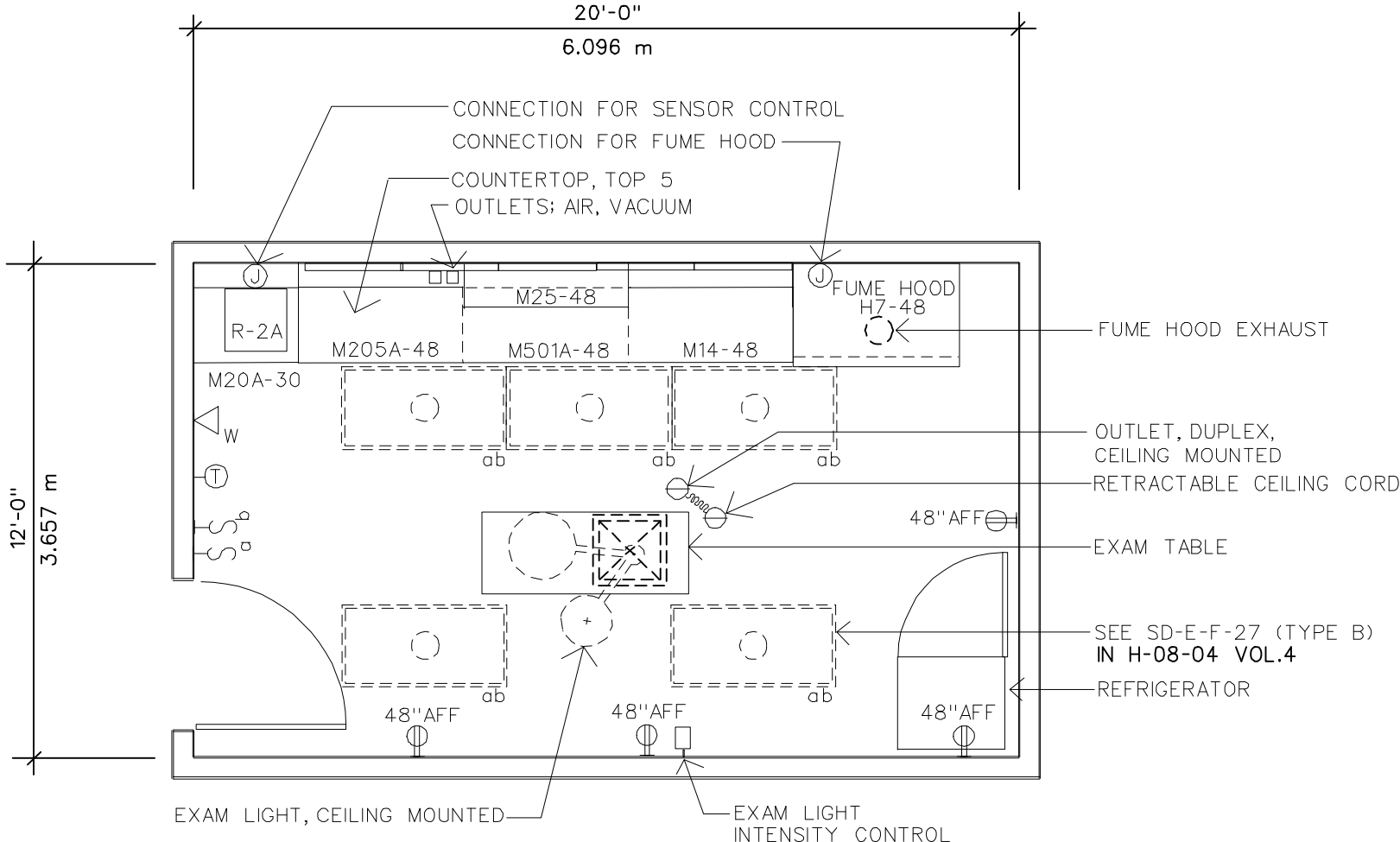
SEE NARRATIVE "ENVIRONMENTAL MONITORING" FOR ALARMS

## PLUMBING AND MEDICAL GASES

Sanitary Drain	YES	Cold Water	YES
Acid Waste	-	Hot Water	YES
Silver Recovery	-	Reagent Water	-
Medical Air	-	Laboratory Air	-
Medical Vacuum	-	Laboratory Vacuum	-
Oxygen	-	Fuel Gas	-
Nitrous Oxide	-	Anesthesia Evac	-

Notes:

26 February 1993



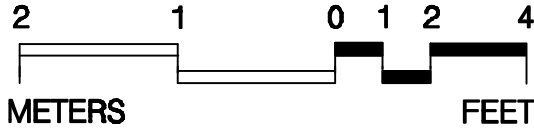
NOTE: FOR ALL M, R AND H EQUIPMENT SEE H-08-06

NOTE: OUTLETS AT COUNTER LOCATION ARE 48" ABOVE FINISHED FLOOR

NOTE: RETRACTABLE CEILING CORD TAKE UP REEL NEEDS TO BE STRUCTURALLY SUPPORTED AT CEILING.

**240 NSF**  
**22.296 m<sup>2</sup>**

**Procedural Laboratory  
(Standard)**



**Equipment & Utility Plan**

# Procedural Laboratory (Standard)

# Design Standards

## ARCHITECTURAL

Floor Area	240 NSF	Wall Finish	CMU (SC)
Ceiling	PCP	Wainscot	-
Ceiling Height	9'-0"	Base	ERF
Slab Depression	-	Floor Finish	ERF
Notes:		Lead Lining	-

## SPECIAL EQUIPMENT

H7-48 FUME HOOD

## ELECTRICAL

### Lighting

General	70 FC, 3.5 W/SF*
Special	**
Emergency	-

Notes:

\*FLUOR LAMPS COLOR CORRECTED

\*\* (1) SURGICAL LIGHT, 1 HEAD

\*\*\*STRIP MOLD: 360 W; REFRIGERATOR: 1200 W; H7: 400W

### Power

General	540 W
Special	***
Emergency	-

## COMMUNICATIONS

Telephone	WALL MTD	ADP	EMPTY CONDUIT
Intercom	PART OF TELEPHONE	Radio	-
Public Address	-	Other	-

Notes:

## HEATING, VENTILATING AND AIR CONDITIONING

AC Load Lights	4.2 W/SF
AC Load Equipment	7.2 W/SF*
Number of People	3
Noise Criteria	NC-40
Room Pressure	POSITIVE
Dry Bulb Temp Cooling (F)	78
Dry Bulb Temp Heating (F)	72
Minimum Air Changes per Hour	15 (SA)
Minimum % Outside Air	100
100% Exhaust Air	YES
Special Exhaust	YES**
Steam	-
Relative Humidity - Cooling	50 %
Relative Humidity - Heating	30 %

Notes:

\*EXAM LIGHT INCLUDED IN EQUIPMENT LOAD

\*\*H7: 875 CFM, 0.30" PD

## PLUMBING AND MEDICAL GASES

Sanitary Drain	YES	Cold Water	YES
Acid Waste	YES	Hot Water	YES
Silver Recovery	-	Reagent Water	-
Medical Air	-	Laboratory Air	YES
Medical Vacuum	-	Laboratory Vacuum	YES
Oxygen	-	Fuel Gas	YES
Nitrous Oxide	-	Anesthesia Evac	-

Notes:

H7: LAB AIR, LAB VACUUM, FUEL GAS, COLD WATER, ACID WASTE

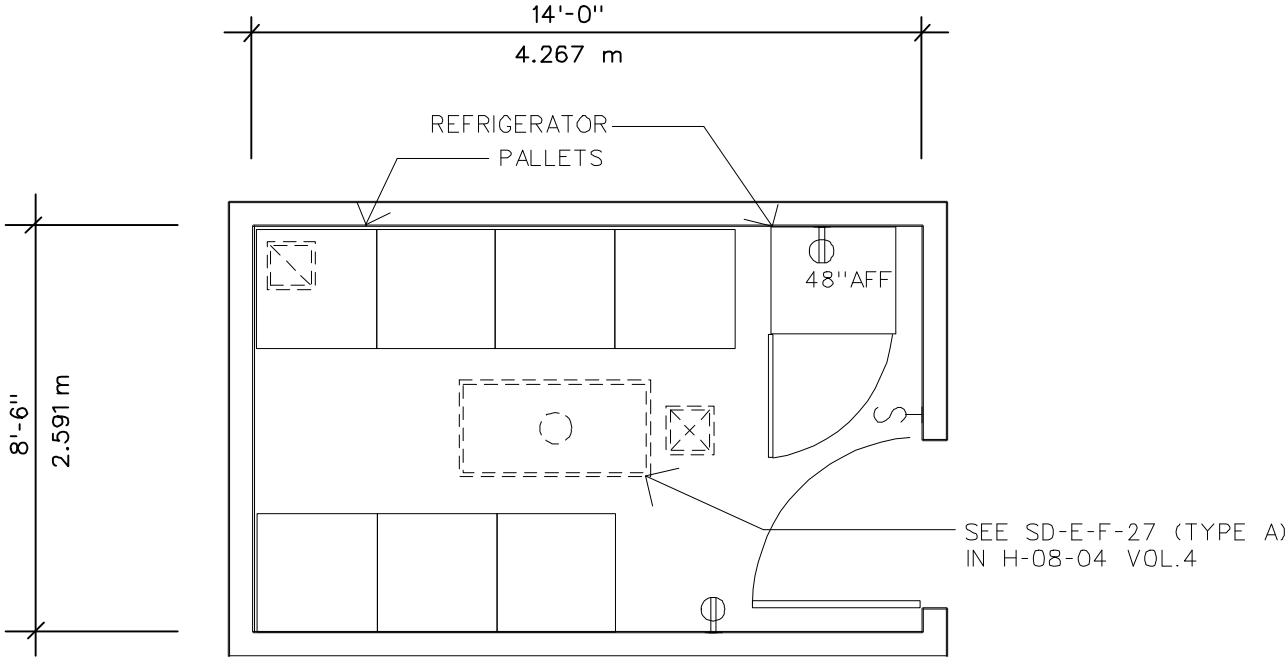
# Procedural Laboratory (Standard)

# Equipment Guide List

SYMBOL	QTY	AI	DESCRIPTION
			NOTE: ALL LABORATORY FURNITURE SYMBOLS PREFIXED BY "M" SHALL BE INTERCHANGABLE SUSPENSION SYSTEM TYPE.
TOP 5	1	CF	COUNTERTOP, CORROSION RESISTING (STAINLESS) STEEL, RAISED RIM, WITH INTEGRAL SINK AND SPLASHBACKS (H-08-1 & H-08-6, MCS 11602)
R-2A	1	CF	SINK, CORROSION RESISTING (STAINLESS) STEEL, WITH END OR CORNER DRAIN OUTLET, WITH OR WITHOUT DRAINBOARD AND SENSOR CONTROL, 18" X 18" X 16" DEEP (H-08-1 & H-08-6, MCS 11602)
M20/20A	1	CF	CABINET, UNDERCOUNTER, SINK UNIT, 2 HINGED PANEL DOORS, AVAILABLE WIDTHS 30", 36", 42", 48"; DEPTH 22"; HEIGHTS 31", 25" (H-08-1 & H-08-6, MCS 12346)
M205/205A	1	CF	CABINET, UNDERCOUNTER, 6/5 DRAWERS, WITH LOCK AND KEY, AVAILABLE WIDTHS 36", 48"; DEPTH 22"; HEIGHTS 31", 25" (H-08-1 & H-08-6, MCS 12346)
			-OR-
M202/202A	1	CF	CABINET, UNDERCOUNTER, 7/6 DRAWERS, WITH LOCK AND KEY, AVAILABLE WIDTHS 36", 48"; DEPTH 22"; HEIGHTS 31", 25" (H-08-1 & H-08-6, MCS 12346)
M501/501A	1	CF	CABINET, UNDERCOUNTER, 6/5 DRAWERS, 1 DOOR AND 1 ADJUSTABLE SHELF, WITH LOCK AND KEY, AVAILABLE WIDTHS 36", 48"; DEPTH 22"; HEIGHTS 31", 25" (H-08-1 & H-08-6, MCS 12346)
M14	AR	CF	TABLE FRAME, WITH DRAWER(S), KNEE SPACE UNIT, AVAILABLE WIDTHS AS REQUIRED, DEPTH 22"; HEIGHT 31" (H-08-1 & H-08-6, MCS 12346)
	1	VV	REFRIGERATOR, DOMESTIC TYPE, 15 CU. FT., APPROX. 31"W X 28"D X 66"H, 120 VOLT, 20 AMP
M25	1	CF	CABINET, WALL, WITH SLOPING TOP, 2 GLAZED SLIDING DOORS AND 2 ADJUSTABLE SHELVES, WITH LOCK AND KEY, AVAILABLE WIDTHS 30", 36", 42", 48"; DEPTH 13"; HEIGHT 30" (H-08-1 & H-08-6, MCS 12346)
			NOTE: REQUIREMENT FOR H7-48, TO BE DETERMINED ON PROJECT BY PROJECT BASIS.
H7-48	1	CC	FUME HOOD, AIR BY-PASS, WITH CABINET BASE, 48"W X 31"D X 96"H, WITH CUP SINK, AIR, GAS, VACUUM AND COLD WATER OUTLETS, 120 VOLT, 20 AMP RECEPTACLES (H-08-1 & H-08-6, MCS 11610)
	1	VV	TABLE, EXAMINATION, STAINLESS STEEL, 24" X 60"
	1	CF	LIGHT, EXAM, SINGLE LIGHTHEAD, CEILING MOUNTED, SWIVEL ARM, ADJUSTABLE INTENSITY, 120 VOLT, 20 AMP (H-08-1, MCS 16515)
	1	CC	OUTLETS, ONE EACH, AIR AND VACUUM GROUPED OVER COUNTER (H-08-1 & H-08-6, MCS 11602)
	1	CC	RETRACTABLE CEILING CORD, (NEAR EXAM LIGHT) 120 VOLT, 20 AMP (H-08-1, MCS 16140; H-08-3, CS 801-3)
	1	CC	OUTLET, ELECTRICAL, DUPLEX, 120 VOLT, 20 AMP, CEILING MOUNTED, FOR RETRACTABLE CEILING CORD (H-08-1, MCS 16140)
	AR	CC	RECEPTACLE, ELECTRICAL, DUPLEX, 120 VOLT, 20 AMP, STRIP MOLD WITH OUTLETS ON 24" CENTERS, 9" ABOVE COUNTER (H-08-1, MCS 16140; H-08-3, CS 801-3)
	AR	CC	RECEPTACLE, ELECTRICAL, DUPLEX, 120 VOLT, 20 AMP (H-08-1, MCS 16140; H-08-3, CS 801-3)

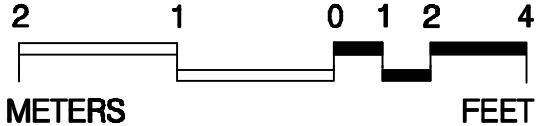


26 February 1993



120 NSF
11.148 m <sup>2</sup>

Dry Feed and Bedding Storage



Equipment & Utility Plan

# Dry Feed and Bedding Storage

# Design Standards

## ARCHITECTURAL

Floor Area	120 NSF	Wall Finish	CMU (SC)
Ceiling	PCP	Wainscot	-
Ceiling Height	9'-0"	Base	ERF
Slab Depression	-	Floor Finish	ERF
Notes:		Lead Lining	-

## SPECIAL EQUIPMENT

REFRIGERATOR

## ELECTRICAL

### Lighting

General	20 FC, 1.0 W/SF
Special	-
Emergency	-
Notes:	

### Power

General	-
Special	REFRIGERATOR
1200W	
Emergency	-

## COMMUNICATIONS

Telephone	-	ADP	-
Intercom	-	Radio	-
Public Address	-	Other	-
Notes:			

## HEATING, VENTILATING AND AIR CONDITIONING

AC Load Lights	0.9 W/SF
AC Load Equipment	5.7 W/SF
Number of People	1
Noise Criteria	NC-40
Room Pressure	(0)
Dry Bulb Temp Cooling (F)	78
Dry Bulb Temp Heating (F)	72
Minimum Air Changes per Hour	4 (SA)
Minimum % Outside Air	100
100% Exhaust Air	YES
Special Exhaust	-
Steam	-
Relative Humidity - Cooling	50 %
Relative Humidity - Heating	30 %
Notes:	

## PLUMBING AND MEDICAL GASES

Sanitary Drain	-	Cold Water	-
Acid Waste	-	Hot Water	-
Silver Recovery	-	Reagent Water	-
Medical Air	-	Laboratory Air	-
Medical Vacuum	-	Laboratory Vacuum	-
Oxygen	-	Fuel Gas	-
Nitrous Oxide	-	Anesthesia Evac	-
Notes:			

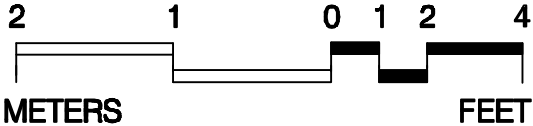
26 February 1993

## Dry Feed and Bedding Storage

## Equipment Guide List

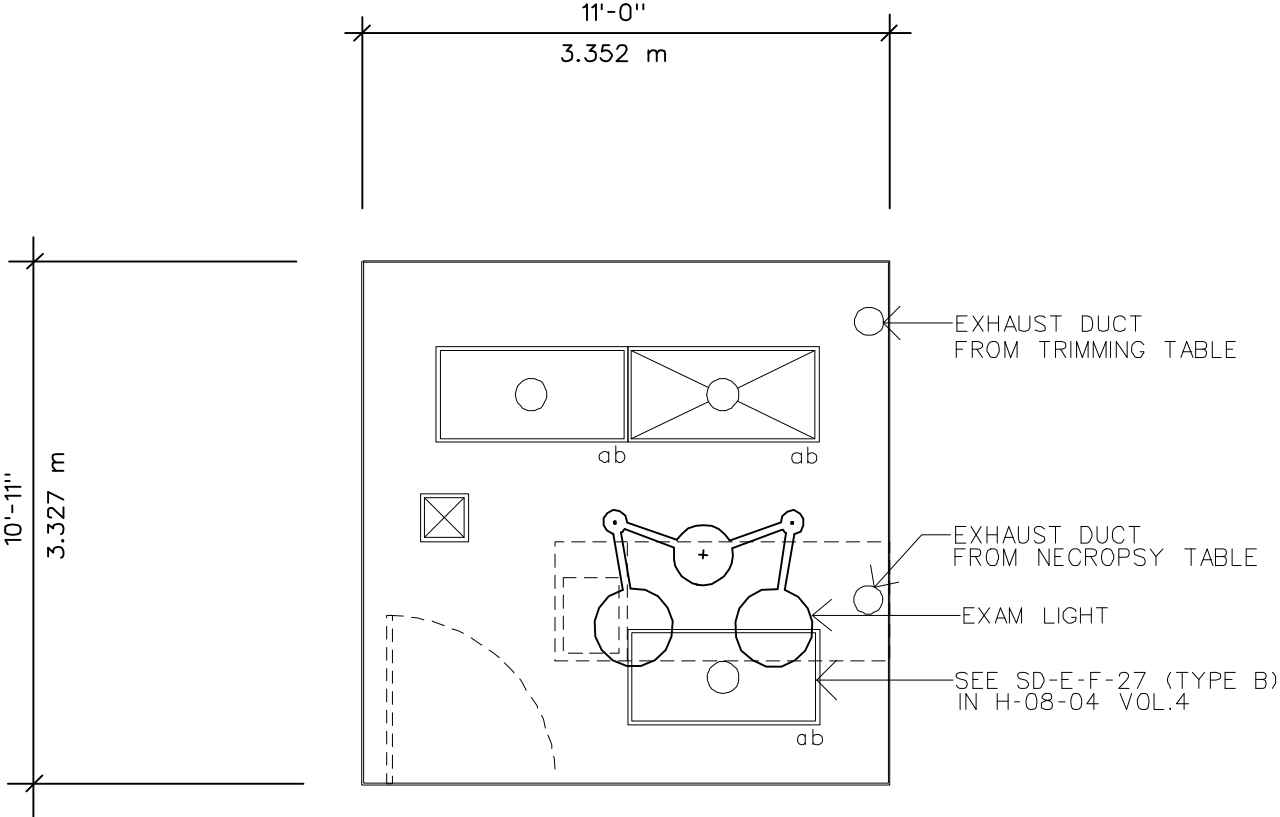
<b>SYMBOL</b>	<b>QTY</b>	<b>AI</b>	<b>DESCRIPTION</b>
AR		VV	PALLETS, PLASTIC (SIZE AS REQUIRED)
1		VV	REFRIGERATOR, DOMESTIC TYPE, 15 CU. FT., APPROX. 31"W X 28"D X 66"H, 120 VOLT, 20 AMP
AR		CC	RECEPTACLE, ELECTRICAL, DUPLEX, 120 VOLT, 20 AMP (H-08-1, MCS 16140; H-08-3, CS 801-3)

# Necropsy

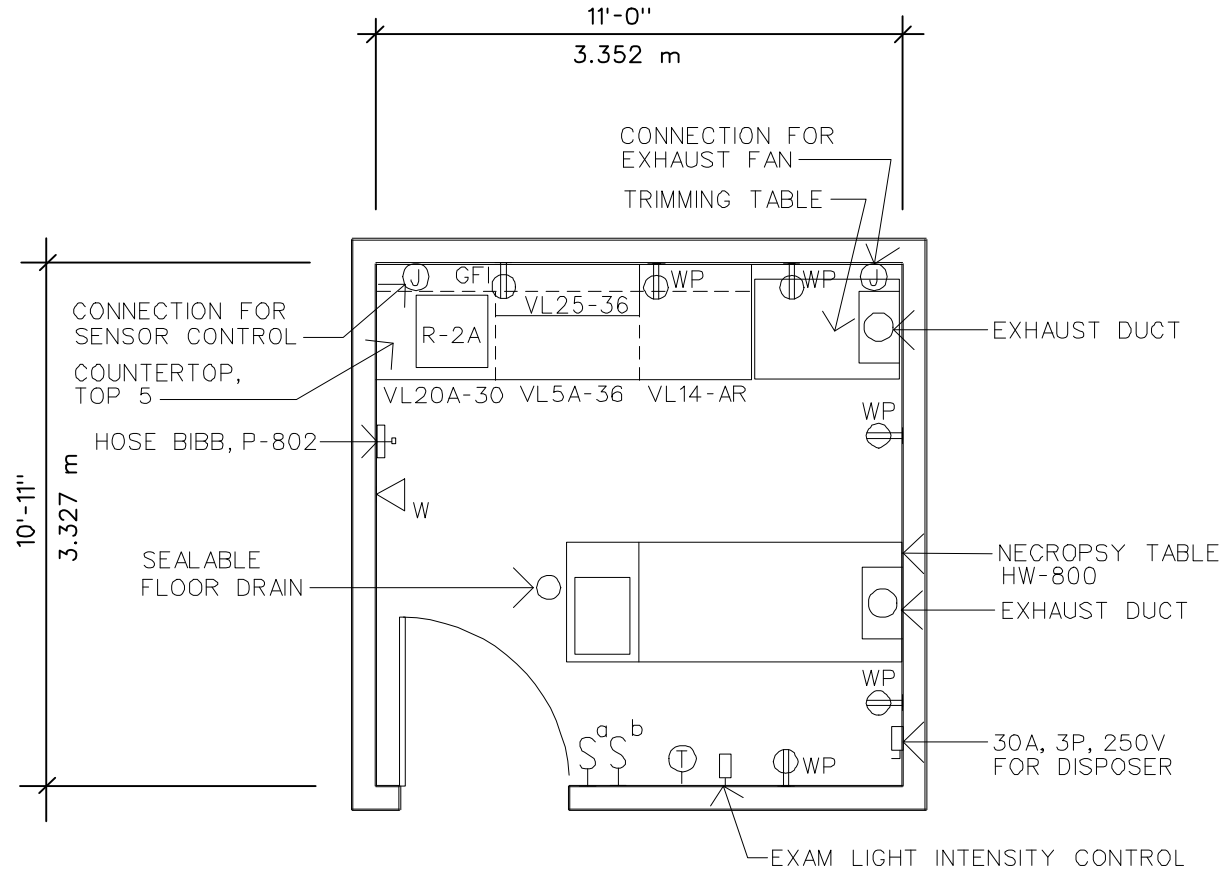


# Reflected Ceiling Plan

120 NSF  
11.148 m<sup>2</sup>



26 February 1993



NOTE: IF NECROPSY IS ADJACENT TO COLD ROOM, THEN THERE IS NO NEED TO INCLUDE A REFRIGERATOR IN NECROPSY

NOTE: OUTLETS AT COUNTER LOCATION ARE 48" ABOVE FINISHED FLOOR

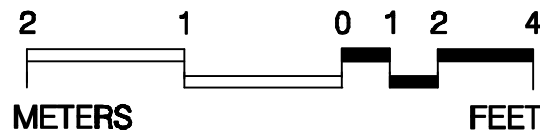
NOTE: PROVIDE ONE GROUND FAULT INTERRUPTER (GFI) RECEPTACLE, TO SUBFEED OTHER RECEPTACLES.

NOTE: FOR ALL P EQUIPMENT SEE H-08-04 VOL.1

NOTE: FOR ALL VL, R AND HW EQUIPMENT SEE H-08-06

**120 NSF**  
**11.148 m<sup>2</sup>**

# Necropsy



# Equipment & Utility Plan

# Necropsy

# Design Standards

## ARCHITECTURAL

Floor Area	120 NSF	Wall Finish	CMU (SC)
Ceiling	PCP	Wainscot	-
Ceiling Height	9'-0"	Base	ERF
Slab Depression	-	Floor Finish	ERF
Notes:		Lead Lining	-

## SPECIAL EQUIPMENT

HW-800 NECROPSY TABLE  
TRIMMING TABLE

## ELECTRICAL

### Lighting

General	70 FC, 3.5 W/SF*
Special	**
Emergency	33% GEN FLUOR

Notes:

\*FLUOR LAMPS COLOR CORRECTED

\*\* (1) SURGICAL LIGHT, 2 HEADS

\*\*\*HW-800: 15 A, 115 V, 1 PHASE

### Power

General	1080 W
Special	***
Emergency	-

## COMMUNICATIONS

Telephone	WALL MTD	ADP	-
Intercom	PART OF TELEPHONE	Radio	-
Public Address	-	Other	EMPTY CONDUIT*

Notes:

\*TO ALLOW FOR DICTATION

## HEATING, VENTILATING AND AIR CONDITIONING

AC Load Lights	5.0 W/SF
AC Load Equipment	17.0 W/SF*
Number of People	3
Noise Criteria	NC-40
Room Pressure	NEGATIVE
Dry Bulb Temp Cooling (F)	76
Dry Bulb Temp Heating (F)	76
Minimum Air Changes per Hour	15 (SA)
Minimum % Outside Air	100
100% Exhaust Air	YES
Special Exhaust	YES**
Steam	-
Relative Humidity - Cooling	60 %
Relative Humidity - Heating	30 %

Notes:

\*EXAM LIGHT INCLUDED AS EQUIPMENT LOAD

\*\*SEE HVAC DESIGN MANUAL "AUTOPSY" FOR EXH REQUIREMENTS

## PLUMBING AND MEDICAL GASES

Sanitary Drain	YES	Cold Water	YES
Acid Waste	-	Hot Water	YES
Silver Recovery	-	Reagent Water	-
Medical Air	-	Laboratory Air	YES
Medical Vacuum	-	Laboratory Vacuum	YES
Oxygen	-	Fuel Gas	YES
Nitrous Oxide	-	Anesthesia Evac	-

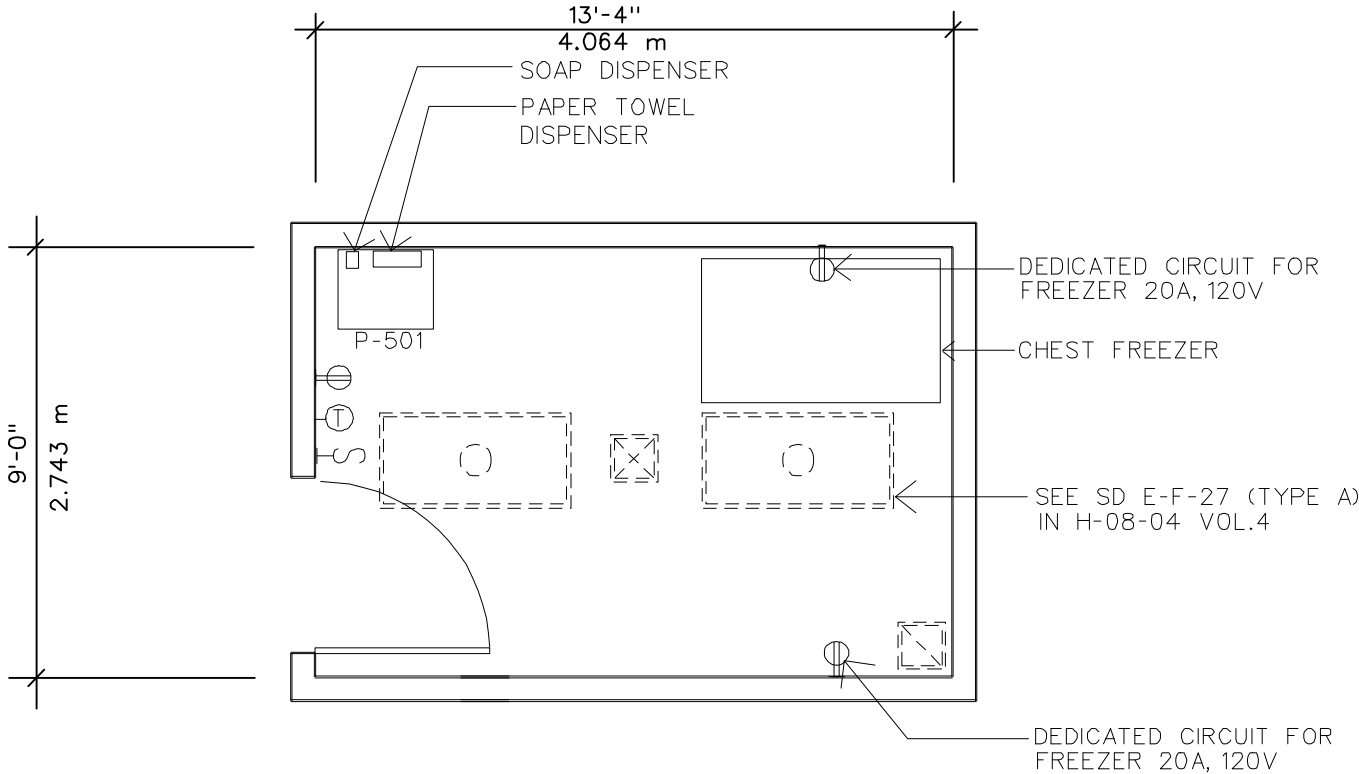
Notes:

## Necropsy

## Equipment Guide List

SYMBOL	QTY	AI	DESCRIPTION
	1	CF	LIGHT, EXAM, DUAL LIGHT, CEILING MOUNTED, SWIVEL ARM, ADJUSTABLE INTENSITY, 120 VOLT, 20 AMP (H-08-1, MCS 16515)
HW-800	1	CC	TABLE, NECROPSY, DISSECTING, CORROSION RESISTING (STAINLESS) STEEL, FAUCETS, 3/4 HP DISPOSAL UNIT, SPRAY HOSE ATTACHMENT, WITH DOWN DRAFT EXHAUST (H-08-1 & H-08-6, MCS 11620)
TOP 5	1	CF	COUNTERTOP, CORROSION RESISTING (STAINLESS) STEEL, RAISED RIM, WITH INTEGRAL SINK AND SPLASHBACKS (H-08-1 & H-08-6, MCS 11602)
R-2A	1	CF	SINK, CORROSION RESISTING (STAINLESS) STEEL, WITH END OR CORNER DRAIN OUTLET, WITH OR WITHOUT DRAINBOARD AND SENSOR CONTROL, 18" X 18" X 16" DEEP (H-08-1 & H-08-6, MCS 11602)
VL20/20A	1	CF	CABINET, UNDERCOUNTER, SINK UNIT, 2 HINGED PANEL DOORS, AVAILABLE WIDTHS 30", 36", 42", 48"; DEPTH 22"; HEIGHTS 31", 25", FOR FLOOR MOUNTED ADD 5" TOE BASE (H-08-1 & H-08-6, MCS 12345)
VL5/5A	AR	CF	CABINET, UNDERCOUNTER, WITH 4/3 DRAWERS, 1 HINGED DOOR AND 2/1 ADJUSTABLE SHELVES, AVAILABLE WIDTHS 36", 48"; DEPTH 22"; HEIGHTS 31", 25", FOR FLOOR MOUNTED ADD 5" TOE BASE (H-08-1 & H-08-6, MCS 12345)
VL14	AR	CF	TABLE FRAME, WITH DRAWER(S), KNEE SPACE UNIT, AVAILABLE WIDTHS 18", 24", 30", 36", 42", 48"; DEPTH 22"; HEIGHT 31" (H-08-1 & H-08-6, MCS 12345)
VL25	AR	CF	CABINET, WALL, WITH SLOPING TOP, 2 GLAZED SLIDING DOORS AND 2 ADJUSTABLE SHELVES, AVAILABLE WIDTHS 30", 36", 42", 48"; DEPTH 13"; HEIGHT 30" (H-08-1 & H-08-6, MCS 12345)
	1	VV	TABLE, TRIMMING, HOODED, VENTILATED
	1	VV	REFRIGERATOR, DOMESTIC TYPE, 15 CU. FT., APPROX. 31"W X 28"D X 66"H, 120 VOLT, 20 AMP
P-802	1	CC	HOSE BIBB, COMBINATION FAUCET, WALL MOUNTED, CONCEALED SUPPLY PIPES (H-08-1, MCS 15450; H-08-4, SD 4.2)
	1	CC	DRAIN, FLOOR, SEALABLE (H-08-1, MCS 15400)
	AR	CC	RECEPTACLE, ELECTRICAL, DUPLEX, 120 VOLT, 20 AMP, WITH WEATHERPROOF COVER PLATE (H-08-1, MCS 16140; H-08-3, CS 801-3)
			NOTE: PROVIDE ONE GROUND FAULT INTERRUPTER (GFI) RECEPTACLE, TO SUBFEED OTHER RECEPTACLES.
	1	CC	RECEPTACLE, ELECTRICAL, DUPLEX, 120 VOLT, 20 AMP, WITH GROUND FAULT INTERRUPTER (H-08-1, MCS, 16140; H-08-3, CS 801-3)

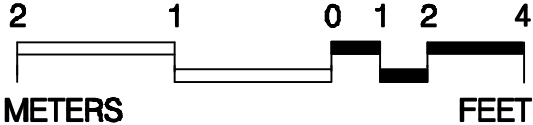
26 February 1993



120 NSF
<hr/>
11.148 m <sup>2</sup>

NOTE: FOR ALL P EQUIPMENT  
SEE H-08-04 VOL.1

# Carcass and Waste Storage



# Equipment & Utility Plan



# Carcass and Waste Storage

# Design Standards

## ARCHITECTURAL

Floor Area	120 NSF	Wall Finish	CMU (SC)
Ceiling	PCP	Wainscot	-
Ceiling Height	9'-0"	Base	ERF
Slab Depression	-	Floor Finish	ERF
Notes:		Lead Lining	-

## SPECIAL EQUIPMENT

FREEZERS

## ELECTRICAL

### Lighting

General	30 FC, 1.5 W/SF
Special	-
Emergency	-

Notes:

### Power

General	180 W
Special	*
Emergency	*

\*(2) DEDICATED 20A, 120V EMERGENCY CIRCUITS FOR FREEZERS

## COMMUNICATIONS

Telephone	-	ADP	-
Intercom	-	Radio	-
Public Address	-	Other	-

Notes:

## HEATING, VENTILATING AND AIR CONDITIONING

AC Load Lights	3.4 W/SF
AC Load Equipment	5.9 W/SF
Number of People	1
Noise Criteria	NC-40
Room Pressure	NEGATIVE
Dry Bulb Temp Cooling (F)	78
Dry Bulb Temp Heating (F)	72
Minimum Air Changes per Hour	10 (EA)
Minimum % Outside Air	100
100% Exhaust Air	YES
Special Exhaust	-
Steam	-
Relative Humidity - Cooling	50 %
Relative Humidity - Heating	30 %

Notes:

## PLUMBING AND MEDICAL GASES

Sanitary Drain	YES	Cold Water	YES
Acid Waste	-	Hot Water	YES
Silver Recovery	-	Reagent Water	-
Medical Air	-	Laboratory Air	-
Medical Vacuum	-	Laboratory Vacuum	-
Oxygen	-	Fuel Gas	-
Nitrous Oxide	-	Anesthesia Evac	-

Notes:

26 February 1993

## Carcass and Waste Storage

## Equipment Guide List

<b>SYMBOL</b>	<b>QTY</b>	<b>AI</b>	<b>DESCRIPTION</b>
	AR	VV	FREEZER, CHEST TYPE, 4 DEGREES TO 0 DEGREES C., CAPACITY AS REQUIRED, 120 VOLT, 20 AMP
P-501	1	CC	SINK, SERVICE, REGULAR (H-08-1, MCS 15450; H-08-4, SD 4.1)
	1	VV	DISPENSER, SOAP, LIQUID, WALL MOUNTED
	1	VV	DISPENSER, BIFOLD PAPER TOWEL, SURFACE MOUNTED
	AR	CC	RECEPTACLE, ELECTRICAL, DUPLEX, 120 VOLT, 20 AMP (H-08-1, MCS 16140; H-08-3, CS 801-3)