

Section 4

**Design Guide Plates
and Data Sheets:
Inpatient Pharmacy**

Guide Plate Series	Plate Number
Dispensing Station - Unit Dose and Ward Stock	
Equipment & Utility Plan	4-1
Reflected Ceiling	4-1
Design Standards	4-1
Equipment Guide List	4-1
Medication Assignment Area and Stat Counter	
Equipment & Utility Plan	4-2
Reflected Ceiling	4-2
Design Standards	4-2
Equipment Guide List	4-2
Controlled Substance Vault and Secured Dispensing Area	
Equipment & Utility Plan	4-3
Reflected Ceiling Plan.....	4-3
Design Standards	4-3
Equipment Guide List	4-3
Receiving Area	
Equipment & Utility Plan	4-4
Reflected Ceiling Plan.....	4-4
Design Standards	4-4
Equipment Guide List	4-4

Section 4

**Design Guide Plates
and Data Sheets:
Inpatient Pharmacy**

Guide Plate Series	Plate Number
Extemporaneous Repackaging and Extemporaneous Compounding	
Equipment & Utility Plan	4-5
Reflected Ceiling Plan.....	4-5
Design Standards	4-5
Equipment Guide List	4-5
Intravenous Admixture and Aseptic Transfer	
Equipment & Utility Plan	4-6
Reflected Ceiling Plan.....	4-6
Design Standards	4-6
Equipment Guide List	4-6
Oncology Drugs	
Equipment & Utility Plan	4-7
Reflected Ceiling Plan.....	4-7
Design Standards	4-7
Equipment Guide List	4-7

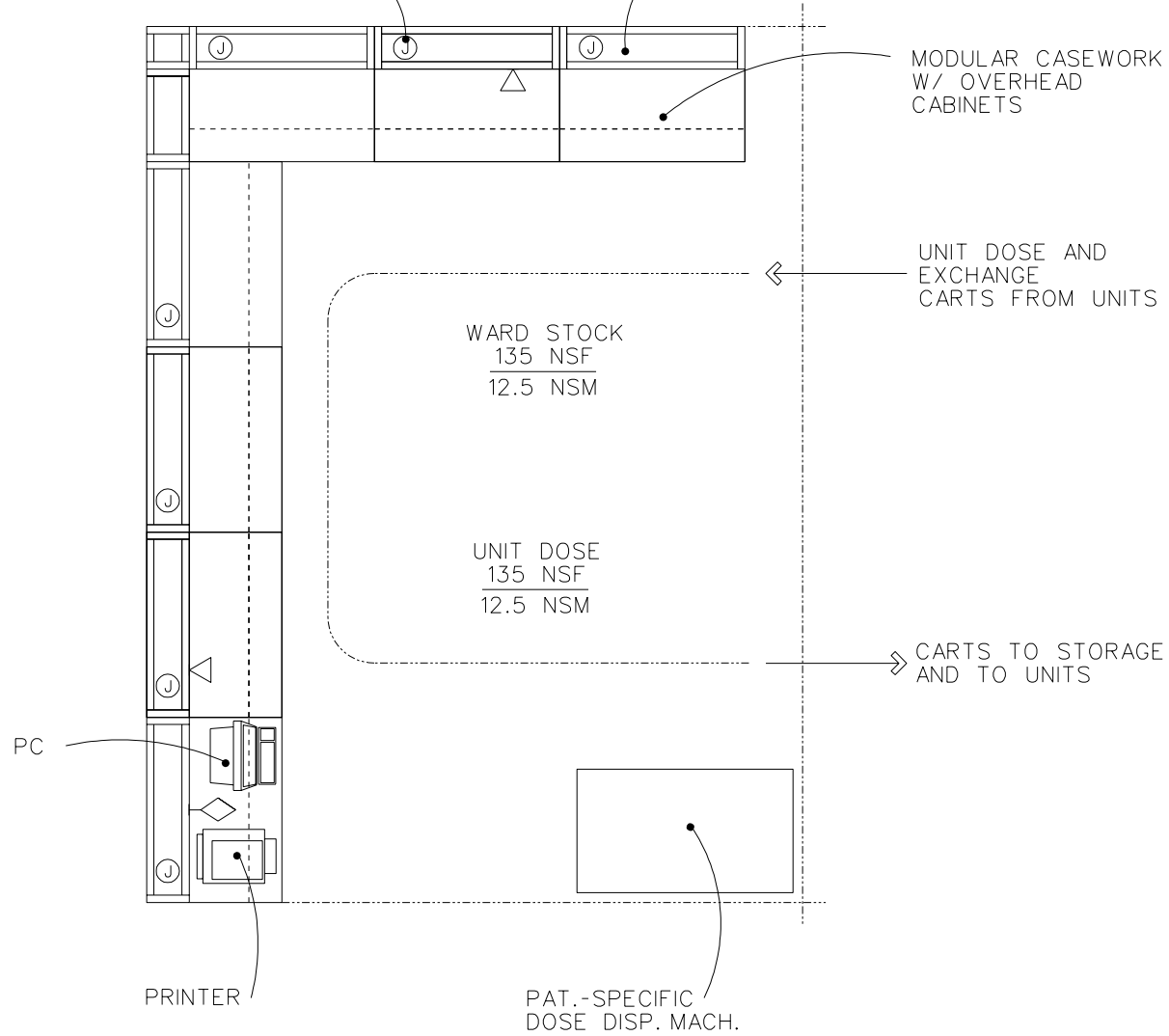
Equipment & Utility Plan

Unit Dose and Ward Stock

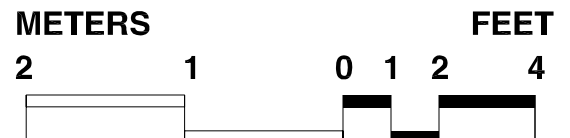
FINAL DRAFT 11-30-95
REVISED MARCH 1997

SEE: DESIGN STDS.
POWER-NOTE 1. (TYP.)

PREFAB.
SERVICE MODULE

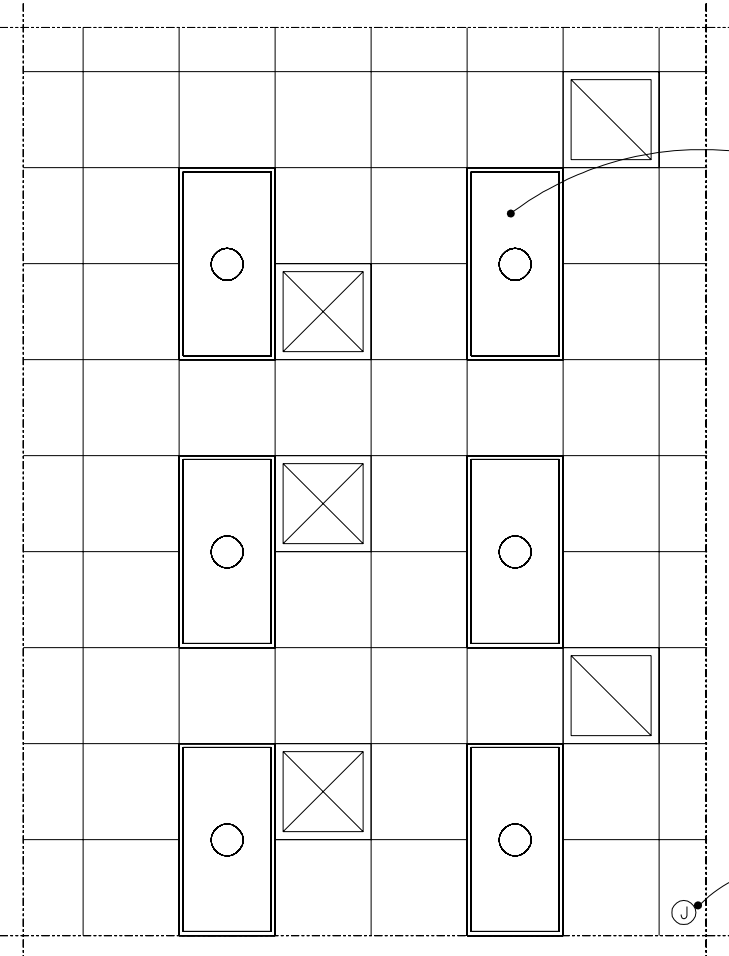


25.1 NSM
270 NSF



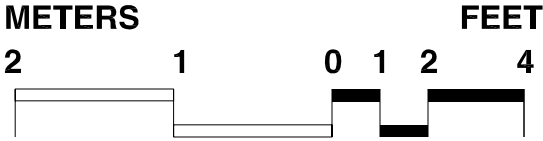
Reflected Ceiling Plan Unit Dose and Ward Stock

FINAL DRAFT 11-30-95
REVISED MARCH 1997



SEE: DESIGN STDS.
LIGHTING-NOTE 2. (TYP.)

SEE: DESIGN STDS.
POWER-NOTE 2.



Design Standards

Unit Dose and Ward Stock

ARCHITECTURAL

Ceiling:	Acoustic lay-in ceiling tile
Ceiling Ht:	2740 mm (9'-0")
Wall Finish:	Paint
Wainscot:	--
Base:	Resilient base
Floor Finish:	Vinyl composition tile
Slab Depr:	--
Notes:	

SPECIAL EQUIPMENT

None

LIGHTING

General:	100 FC
Special:	--

- Notes:
1. Lighting control by area; switch(es) at room entrance.
 2. 600 x 1200 mm (2'x4') recessed fluorescent light fixture, acrylic prismatic lens, W/2-F32T8 lamps, 3500° K CRI=75 (minimum)

POWER

General:	3000W (Receptacles on electrical strip mold on modular casework)
----------	------------------------------------------------------------------

Emergency: --

- Notes:
1. Junction box for 120V power connection to electrical strip mold on modular casework
 2. Junction box for dose dispensing machine to be ceiling-mounted

COMMUNICATIONS

ADP:	Yes
Radio:	--
Telephone:	Yes
Intercom:	--
Pub. Addr:	--

- Notes:
1. Communications cabling routed via modular casework utility access module to outlets on casework.

HEATING, VENTILATING AND AIR CONDITIONING

Dry Bulb Temp Cooling:	22°C (72°F)
Dry Bulb Temp Heating:	22°C (72°F)
Minimum % Outside Air:	15
100% Exhaust Air:	--
Noise Criteria:	NC-35
Steam:	--
Relative Humidity/Cooling:	50%
Relative Humidity/Heating:	30%
Minimum Air Changes/Hr.:	4
Room Pressure:	0
AC Load Equipment:	54 w/sm (5W/SF)
AC Load Lighting:	32 w/sm (3 W/SF)
Number of People:	3
Special Exhaust:	--

Notes:

PLUMBING AND MEDICAL GASES

Cold Water:	--
Hot Water:	--
Laboratory Air:	--
Laboratory Vacuum:	--
Sanitary Drain:	--
Reagent Grade Water:	--
Medical Air:	--
Medical Vacuum:	--
Oxygen:	--

Notes:

Equipment Guide List

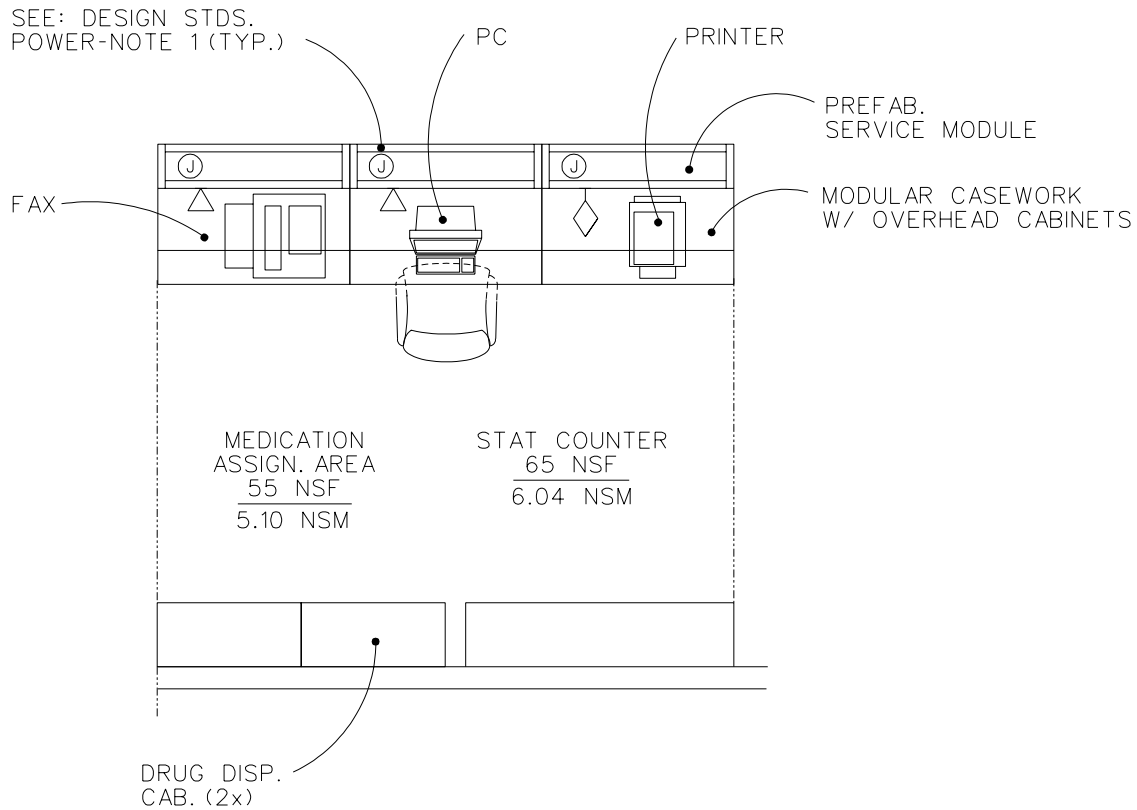
Unit Dose and Ward Stock

SYMBOL	QTY	AI	DESCRIPTION
AR		CF	MODULAR CASEWORK , W/ OVERHEAD CABINETS, GRAVITY FEED SHELVES AND UTILITY ACCESS MODULE
AR		VV	CHAIR, ROTARY, WITH ARMS
AR		VV	COMPUTER, PRINTER
AR		VV	PC, COMPUTER SYSTEM, WITH KEYBOARD
AR		VV	DOSE DISPENSING MACHINE, PATIENT SPECIFIC

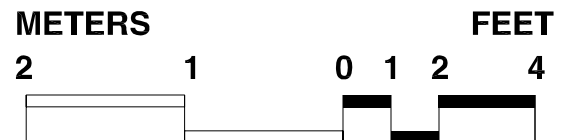
Equipment & Utility Plan

Medication Assignment and Stat Counter

FINAL DRAFT 11-30-95
REVISED MARCH 1997

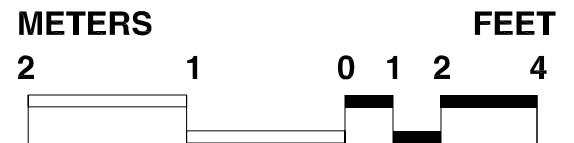
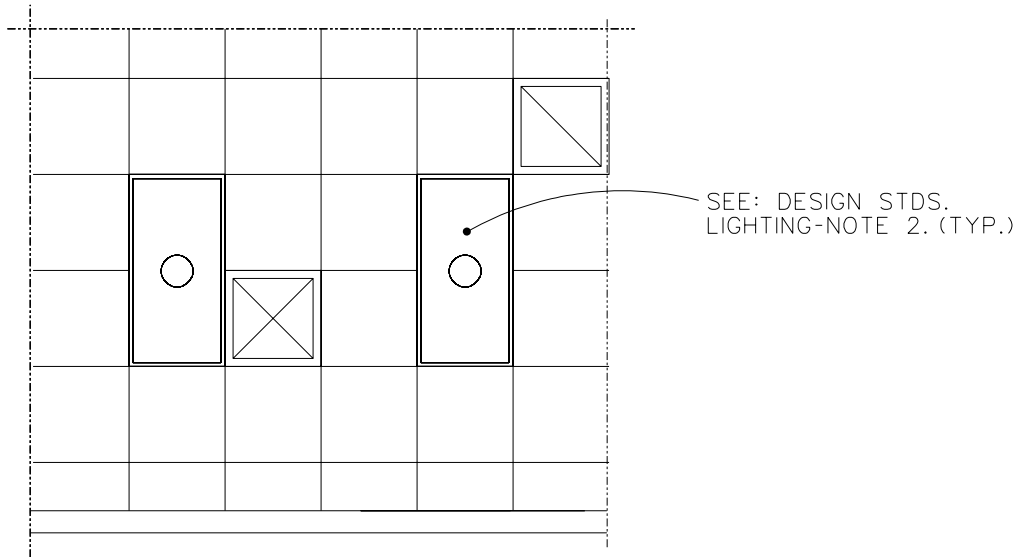


11.15 NSM
120 NSF



Reflected Ceiling Plan Medication Assignment and Stat Counter

FINAL DRAFT 11-30-95
REVISED MARCH 1997



Design Standards

Medication Assignment Area and Stat Counter

ARCHITECTURAL

Ceiling:	Acoustic lay-in ceiling tile
Ceiling Ht:	2740 mm (9'-0")
Wall Finish:	Painted Gypsum Wallboard
Wainscot:	--
Base:	Resilient base
Floor Finish:	Vinyl Composition Tile or Carpet
Slab Depr:	--
Notes:	

SPECIAL EQUIPMENT

This space will have immediate access to a material transport system.

LIGHTING

General:	50 FC
Special:	--
Notes:	<ol style="list-style-type: none"> 1. Lighting control by area; switch(es) at room entrance. 2. 600 x 1200 mm (2'x4')recessed fluorescent light fixture, acrylic prismatic lens, W/2-F32T8 lamps, 3500° K CRI=75 (Min.)

POWER

General:	600W (Receptacles on electrical strip mold on modular casework)
Emergency:	--
Notes:	<ol style="list-style-type: none"> 1. Junction box for 120V power connection to electrical strip mold on modular casework

COMMUNICATIONS

ADP:	Yes
Radio:	--
Telephone:	Yes
Intercom:	--
Pub. Addr:	--
Notes:	<ol style="list-style-type: none"> 1. Communications cabling routed via modular casework utility access module to outlets on casework.

HEATING, VENTILATING AND AIR CONDITIONING

Dry Bulb Temp Cooling:	22°C (72°F)
Dry Bulb Temp Heating:	22°C (72°F)
Minimum % Outside Air:	15
100% Exhaust Air:	--
Noise Criteria:	NC-40
Steam:	--
Relative Humidity/Cooling:	50%
Relative Humidity/Heating:	30%
Minimum Air Changes/Hr.:	4
Room Pressure:	0
AC Load Lighting:	18 w/sm (1.7 w/sf)
AC Load Equipment:	54 w/sm (5 w/hr)
Number of People:	3
Special Exhaust:	--
Notes:	

PLUMBING AND MEDICAL GASES

Cold Water:	--
Hot Water:	--
Laboratory Air:	--
Laboratory Vacuum:	--
Sanitary Drain:	--
Reagent Grade Water:	--
Medical Air:	--
Medical Vacuum:	--
Oxygen:	--
Notes:	

Equipment Guide List

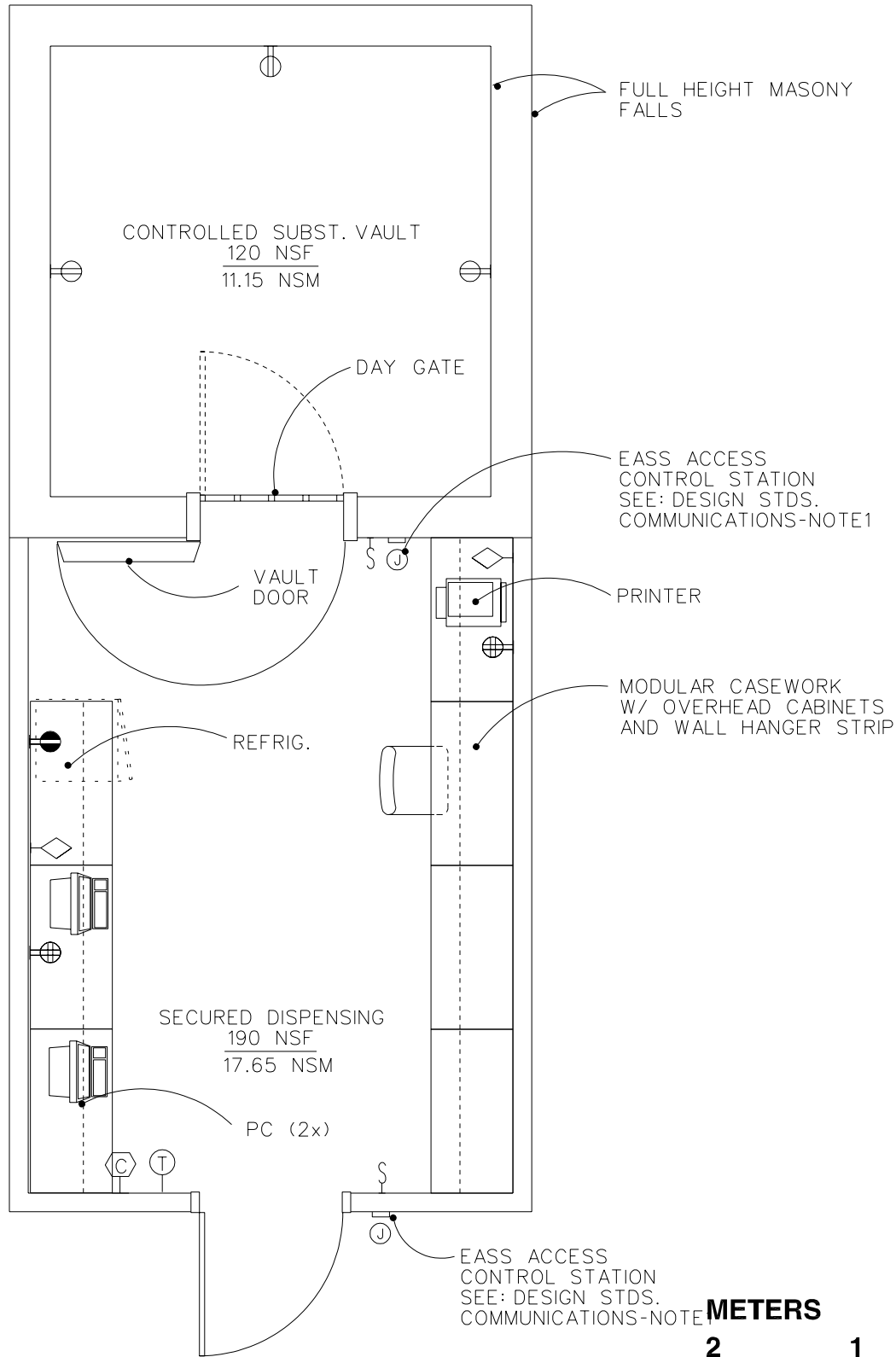
Medication Assignment and Stat Counter

SYMBOL	QTY	AI	DESCRIPTION
AR		CF	CABINET, FULL HEIGHT, DRUG DISPENSING, 1 FIXED SHELF, 1 ADJUSTABLE SHELF AND 8 DISPENSING SHELVES WITH GRAVITY FEED TRAYS, 910mm W x 405mm D x 2130mm H(36"W X 16"D X 84"H)
AR		CF	MODULAR CASEWORK , W/ OVERHEAD CABINETS AND UTILITY ACCESS MODULE
AR		VV	CHAIR, ROTARY, WITH ARMS
AR		VV	CLOCK, BATTERY OPERATED
AR		VV	COMPUTER, PRINTER
AR		VV	PC, COMPUTER SYSTEM, WITH KEYBOARD
AR		VV	TELECOPIER, FACSIMILE RECEIVER/FAX MACHINE

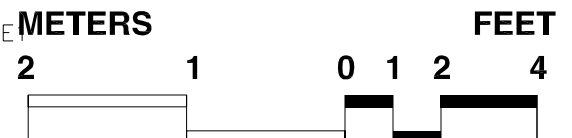
Equipment & Utility Plan

Controlled Substances Vault & Secured Dispensing Area

FINAL DRAFT 11-30-95
REVISED MARCH 1997



28.8 NSM
310 NSF



Design Standards

Controlled Substance Vault & Secured Dispensing Area

ARCHITECTURAL

Ceiling: 1. Acoustic Tile in Secured Dispensing
2. Painted Gypsum Wallboard

Ceiling Ht: 2740 mm (9'-0")

Wall Finish: Paint Masonry & GWBD

Wainscot: --

Base: Resilient base

Floor Finish: Vinyl composition tile

Slab Depr: --

Notes: 1. Vault Construction: Reinforced concrete or reinforced CMU walls; concrete slab "roof".

2. Vault door and day gate: Refer to VA Construction Standard H-08-3, CD-49 for additional security criteria.

SPECIAL EQUIPMENT

None

LIGHTING

General: Secured dispensing = 100 FC
Vault = 20 FC

Notes: 1. Single switch per room controls lighting

2. 300mm x 1200mm (1' x 4') surface mounted fluorescent light fixture, wrap-around acrylic lens, W/2-F32T8 lamps, 3500°K, CRI=75 (minimum)

3. 600mm x 1200mm (2' x 4') recessed fluorescent light fixtures, acrylic prismatic lens, W/2F32T8 lamps, 3500°K, CRI=75 (minimum)

POWER

General: 1000W (Receptacles)

Emergency: --

Notes: 1. Junction box for power and signal connections to electronic access reader (2 locations)

COMMUNICATIONS

ADP: Yes

Radio: --

Telephone: Yes

Intercom: --

Pub. Addr: --

Notes: 1. Conduit and junction boxes required for electronic access security system.

HEATING, VENTILATING AND AIR CONDITIONING

Dry Bulb Temp Cooling: 22°C (72°F)

Dry Bulb Temp Heating: 22°C (72°F)

Minimum % Outside Air: 15

100% Exhaust Air: --

Noise Criteria: NC-40

Steam: --

Relative Humidity/Cooling: 50%

Relative Humidity/Heating: 30%

Minimum Air Changes/Hr.: 4

Room Pressure: 0

AC Load Lighting: Vault Area 11 w/sm (1 w/sf)
Secured Area 32 w/sm (3 w/sf)

AC Load Equipment: Vault Area 43 w/sm (4 w/sf)
Secured Area 54 w/sm (5 w/sf)

Number of People: 3

Special Exhaust: --

Notes:

PLUMBING AND MEDICAL GASES

Cold Water: --

Hot Water: --

Laboratory Air: --

Laboratory Vacuum: --

Sanitary Drain: --

Reagent Grade Water: --

Medical Air: --

Medical Vacuum: --

Oxygen: --

Notes:

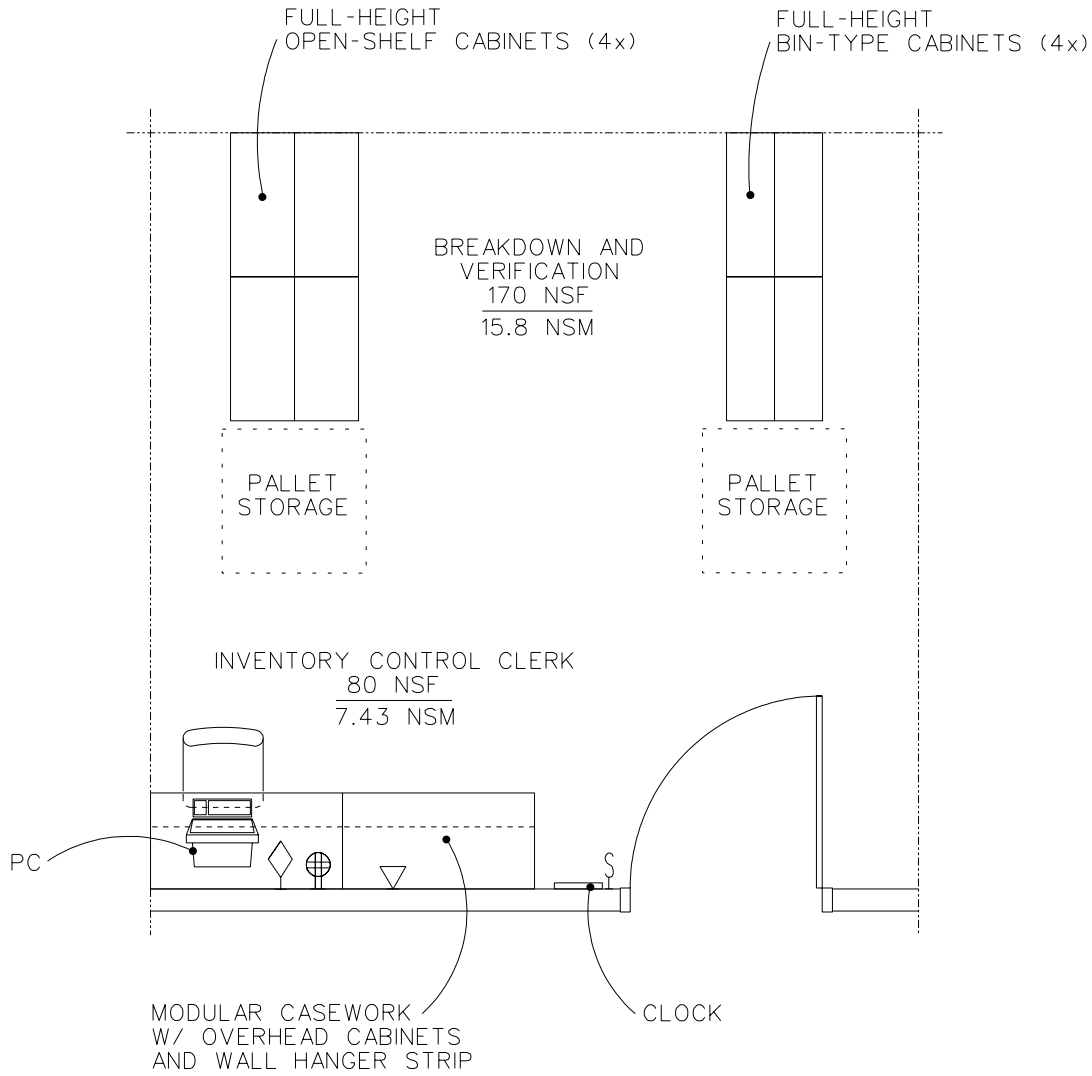
Equipment Guide List

Controlled Substance Vault & Secured Dispensing Area

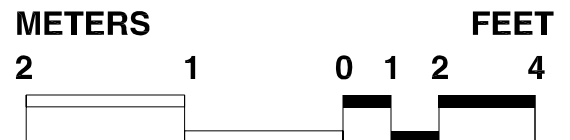
SYMBOL	QTY	AI	DESCRIPTION
AR		CF	MODULAR CASEWORK , W/ OVERHEAD CABINETS AND WALL HANGER STRIP
1		CF	REFRIGERATOR, UNDER COUNTER, 5 CU. FT., 120 VOLTS, 20 AMPS, 600mm W x 600mm D x 960mm H (24"W X 24"D X 38"H)
AR		VV	CHAIR, ROTARY, WITH ARMS
AR		VV	CLOCK, BATTERY OPERATED
AR		VV	COMPUTER, PRINTER
AR		VV	PC, COMPUTER SYSTEM, WITH KEYBOARD
AR		VV	CABINET, FULL HEIGHT OPEN SHELVES, 5 ADJUSTABLE, 1 FIXED SHELF, 900mm W x 405mm D x 2130mm H (36"x16"x84")

Equipment & Utility Plan Receiving Area

FINAL DRAFT 11-30-95
REVISED MARCH 1997



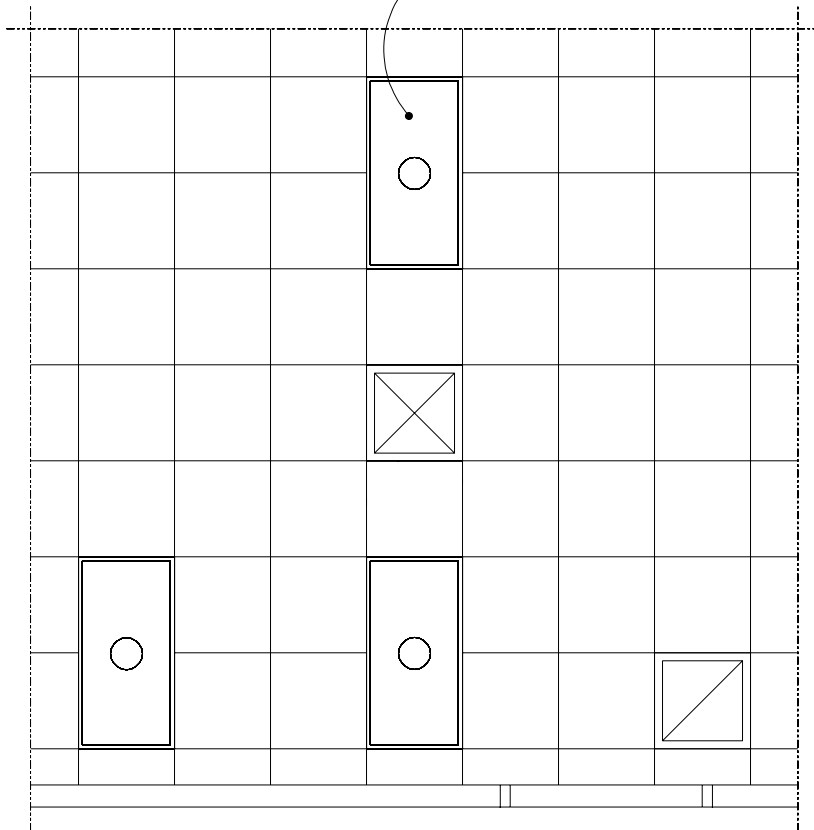
23.2 NSM
250 NSF



Reflected Ceiling Plan Receiving Area

FINAL DRAFT 11-30-95
REVISED MARCH 1997

SEE: DESIGN STDS.
LIGHTING-NOTE 4. (TYP.)



METERS

2 1

FEET

0 1 2 4



Design Standards

Receiving Area

ARCHITECTURAL

Ceiling:	Acoustic lay-in ceiling tile
Ceiling Ht:	2740 mm (9'-0")
Wall Finish:	Painted Gypsum Wallboard
Wainscot:	--
Base:	Resilient base
Floor Finish:	Vinyl Composition Tile
Slab Depr:	--
Notes:	1. 1120mm (3'-8") Wide Door

SPECIAL EQUIPMENT

None

LIGHTING

General:	30 FC
Special:	--
Notes:	1. Lighting control by area; switching 2. 600 x 1200 mm (2'x4')recessed fluorescent light fixture, acrylic prismatic lens, W/2-F32T8 lamps, 3500° K CRI=75 (minimum)

POWER

General:	500 W (Receptacles)
Emergency:	--
Notes:	--

COMMUNICATIONS

ADP:	Yes
Radio:	--
Telephone:	Yes
Intercom:	--
Pub. Addr:	--
Notes:	--

HEATING, VENTILATING AND AIR CONDITIONING

Dry Bulb Temp Cooling:	22°C (72°F)
Dry Bulb Temp Heating:	22°C (72°F)
Minimum % Outside Air:	15
100% Exhaust Air:	--
Noise Criteria:	NC-40
Steam:	--
Relative Humidity/Cooling:	50%
Relative Humidity/Heating:	30%
Minimum Air Changes/Hr.:	4
Room Pressure:	0
AC Load Lighting:	13 w/sm (1.2 W/sf)
AC Load Equipment:	32 w/sm (3W/sf)
Number of People:	6
Special Exhaust:	--
Notes:	--

PLUMBING AND MEDICAL GASES

Cold Water:	--
Hot Water:	--
Laboratory Air:	--
Laboratory Vacuum:	--
Sanitary Drain:	--
Reagent Grade Water:	--
Medical Air:	--
Medical Vacuum:	--
Oxygen:	--
Notes:	--

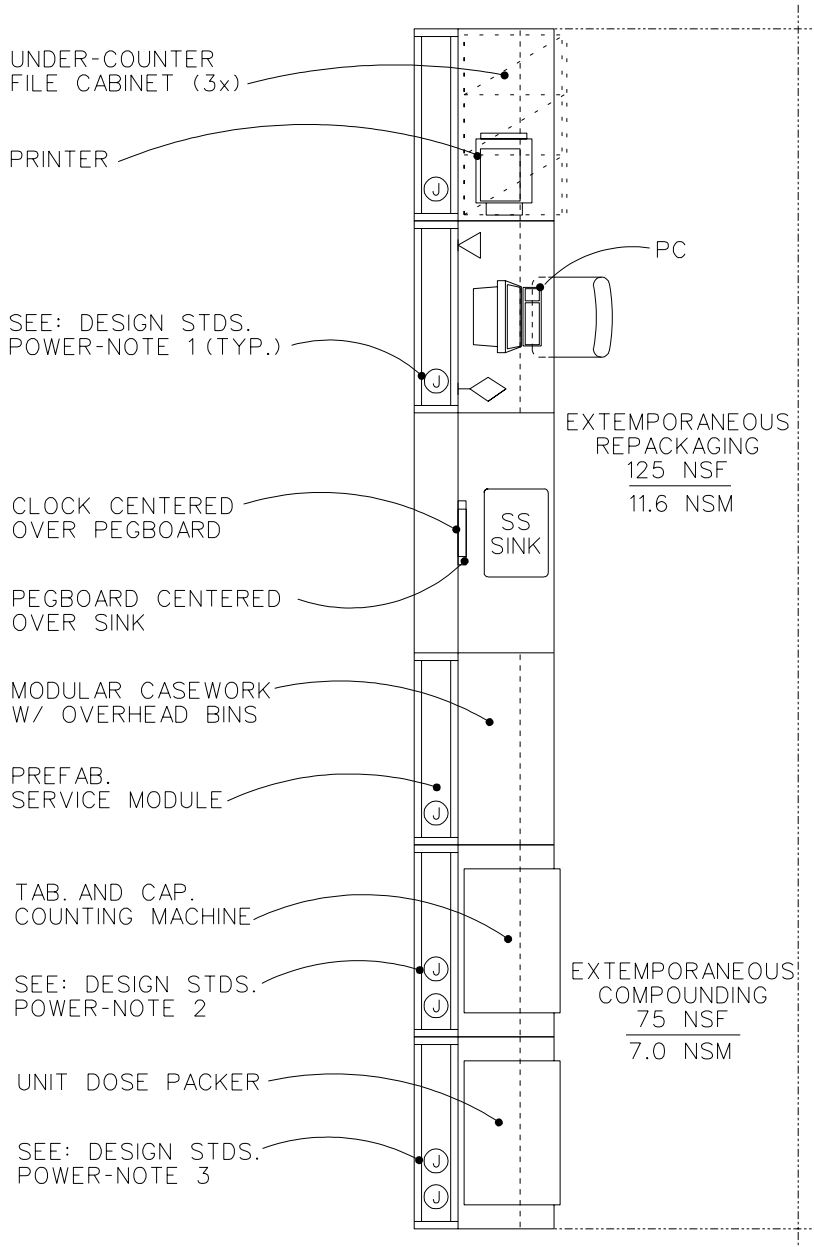
Equipment Guide List Receiving Area

SYMBOL	QTY	AI	DESCRIPTION
AR	CF		MODULAR CASEWORK , W/ OVERHEAD CABINETS AND WALL HANGER STRIP
AR	CF		CABINET, FULL HEIGHT, BIN TYPE, ADJUSTABLE SHELVES, WITH 60 REMOVEABLE BINS, 910mm W x 305mm D x 2130mm H (36"W X 12"D X 84"H)
AR	CF		CABINET, FULL HEIGHT, OPEN SHELVES, 5 ADJUSTABLE AND 1 FIXED SHELF, AVAILABLE WIDTHS, 915mm (36"), 1200mm (48"); DEPTH 405mm (16"), HEIGHT 2130mm (84")
AR	VV		CHAIR, ROTARY, WITH ARMS
AR	VV		CLOCK, BATTERY OPERATED
AR	VV		PC, COMPUTER SYSTEM, WITH KEYBOARD

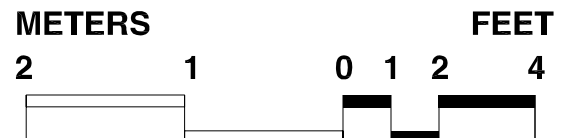
Equipment & Utility Plan

FINAL DRAFT 11-30-95
REVISED MARCH 1997

Extemporaneous Repackaging & Extemporaneous Compounding

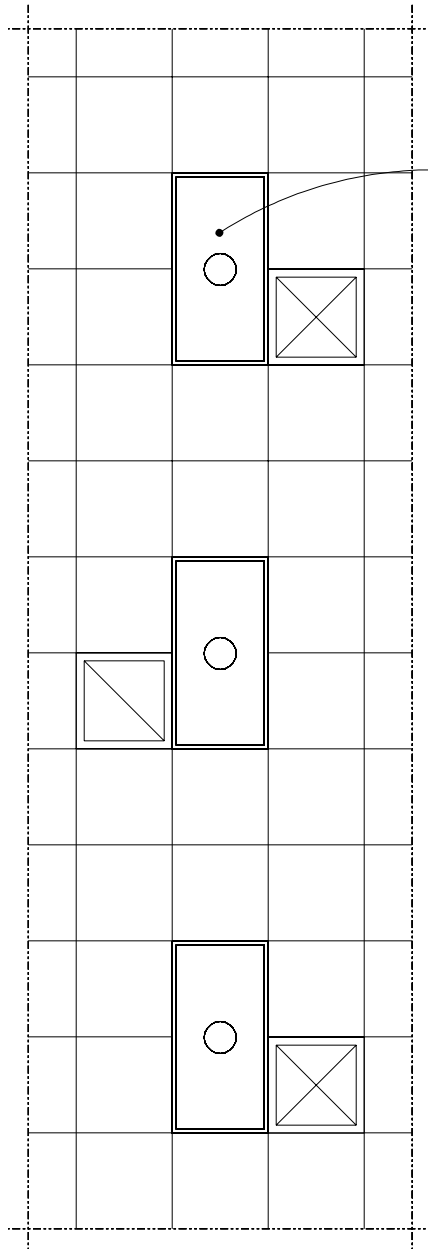


18.6 NSM
200 NSF

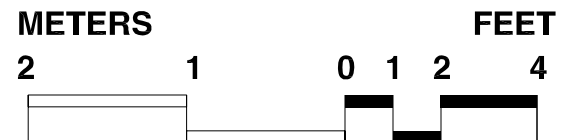


Reflected Ceiling Plan Extemporaneous Repackaging & Extemporaneous Compounding

FINAL DRAFT 11-30-95
REVISED MARCH 1997



SEE: DESIGN STDS.
LIGHTING-NOTE 2. (TYP.)



Design Standards

Extemporaneous Repackaging & Extemporaneous Compounding

ARCHITECTURAL

Ceiling:	Acoustic lay-in ceiling Tile
Ceiling Ht:	2740 mm (9'-0")
Wall Finish:	Painted Gypsum Wallboard
Wainscot:	--
Base:	Resilient Base
Floor Finish:	Vinyl Composition Tile or Carpet
Slab Depr:	--
Notes:	--

SPECIAL EQUIPMENT

None

LIGHTING

General:	100 FC
Special:	--
Notes:	<ol style="list-style-type: none"> 1. Lighting control by area; switch(es) at room entrance. 2. 600 x 1200 mm (2'x4') recessed fluorescent light fixture, acrylic prismatic lens, W/3-F32T8 lamps, 3500° K CRI=75 (Min.).

POWER

General:	2400W (Receptacles on electrical strip mold on modular casework)
Emergency:	--
Notes:	<ol style="list-style-type: none"> 1. Junction box for 120V power connection to electrical strip mold on modular casework 2. Junction box for 120V power connection to tablet and capsule counting machine. 3. Junction box for 120V power connection to unit dose packer machine.

COMMUNICATIONS

ADP:	--
Radio:	--
Telephone:	Yes
Intercom:	--
Pub. Addr:	--
Notes:	1. Communications cabling routed via modular casework utility access lab module to outlets on casework.

HEATING, VENTILATING AND AIR CONDITIONING

Dry Bulb Temp Cooling:	22°C (72°F)
Dry Bulb Temp Heating:	22°C (72°F)
Minimum % Outside Air:	15
100% Exhaust Air:	--
Noise Criteria:	NC-40
Steam:	--
Relative Humidity/Cooling:	50%
Relative Humidity/Heating:	30%
Minimum Air Changes/Hr.:	4
Room Pressure:	0
AC Load Lighting:	32 w/sm (3 w/sf)
AC Load Equipment:	64 w/sm (5 w/sf)
Number of People:	3
Special Exhaust:	--
Notes:	

PLUMBING AND MEDICAL GASES

Cold Water:	Yes
Hot Water:	Yes
Laboratory Air:	--
Laboratory Vacuum:	--
Sanitary Drain:	--
Reagent Grade Water:	Yes
Medical Air:	--
Medical Vacuum:	--
Oxygen:	--
Notes:	1. Drain and vent need to be chemical resistant type.

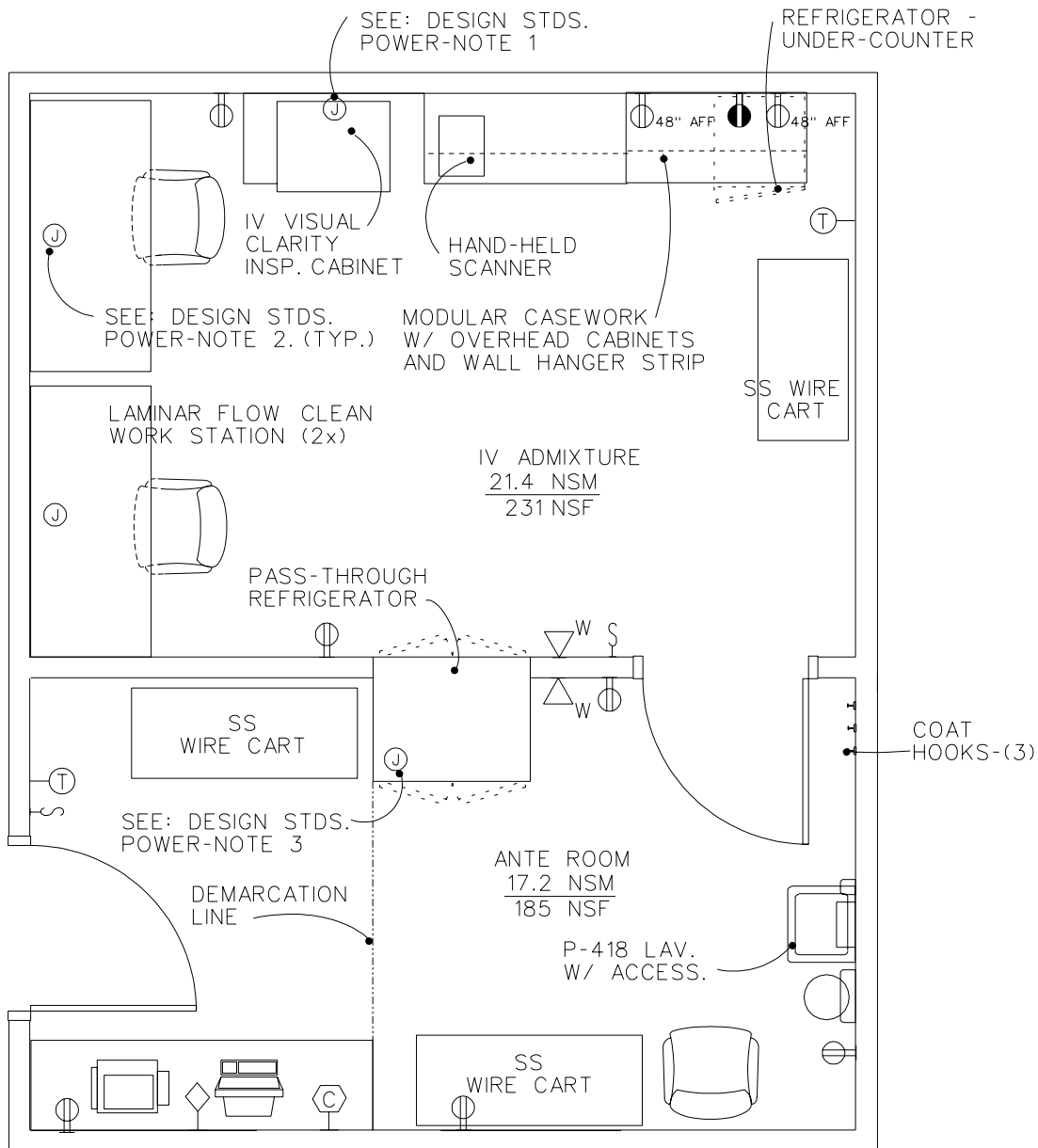
Equipment Guide List

Extemporaneous Repackaging & Extemporaneous Compounding

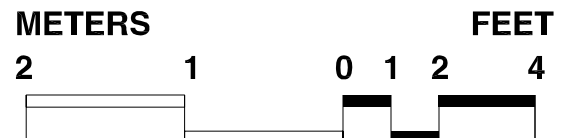
SYMBOL	QTY	AI	DESCRIPTION
AR	CF		MODULAR CASEWORK , W/ OVERHEAD BINS,UTILITY ACCESS MODULE AND WALL HANGER STRIP
AR	CF		SINK, CORROSION RESISTING STEEL, 555mm x 405mm x 205mm (22" X 16" X 8")
AR	CF		PEGBOARD, 405mm W x 600mm H (16"W X 24"H)
AR	VV		CABINET, FILING, UNDER COUNTER, 380mm W x 635mm D (15"W X 25"D)
AR	VV		CHAIR, ROTARY, WITH ARMS
AR	VV		CLOCK, BATTERY OPERATED
AR	VV		MACHINE, COUNTING, TABLET AND CAPSULE, 910mm W x 600mm D (36"W X 24"D)
AR	VV		MACHINE, UNIT DOSE PACKER, STRIP PACKAGING, 910mm W x 600mm D (36"W X 24"D), 120 VOLTS, 20 AMPS
AR	VV		COMPUTER, PRINTER
AR	VV		PC, COMPUTER SYSTEM, WITH KEYBOARD

Equipment & Utility Plan Intravenous Admixture and Aseptic Transfer

FINAL DRAFT 11-30-95
REVISED MARCH 1997



38.6 NSM
416 NSF

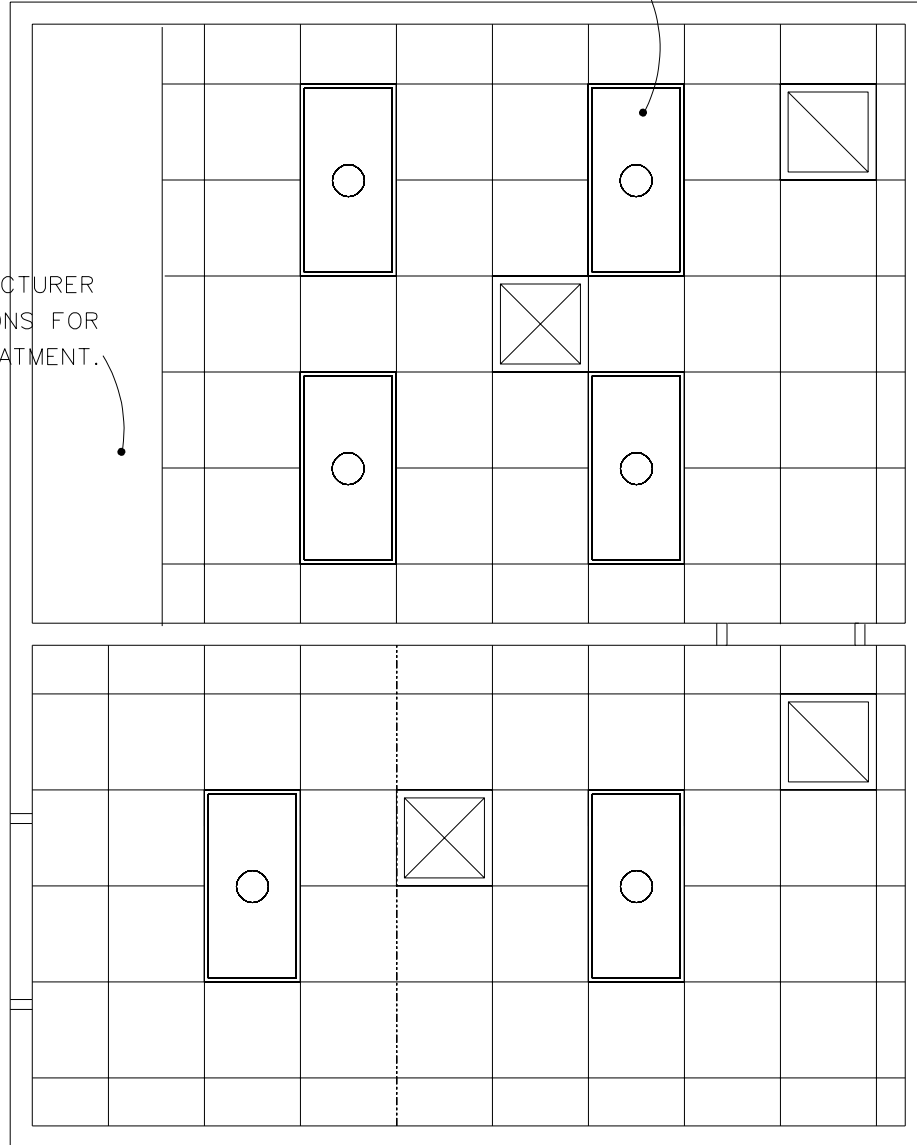


Reflected Ceiling Plan Intravenous Admixture and Aseptic Transfer

FINAL DRAFT 11-30-95
REVISED MARCH 1997

SEE: DESIGN STDS.
LIGHTING-NOTE 2. (TYP.)

FUME HOOD:
SEE MANUFACTURER
SPECIFICATIONS FOR
CEILING TREATMENT.



METERS

2 1

FEET

0 1 2 4



Equipment Guide List

Intravenous Admixture & Aseptic Transfer

SYMBOL	QTY	AI	DESCRIPTION
P-418	1	CC	LAVATORY, WALL HUNG (PG-18-1, MCS 15450; VOL. 3 SD 380)
	AR	CF	MODULAR CASEWORK , W/ OVERHEAD CABINETS AND WALL HANGER STRIP
	AR	CF	REFRIGERATOR, UNDER COUNTER, 5 CU. FT., 120 VOLTS, 20 AMPS, 600mm W x 600mm D x 960mm H (24"W X 24"D X 38"H)
	AR	VV	CABINET, INTRAVENOUS (IV), VISUAL CLARITY INSPECTION, 120 VOLTS, 20 AMPS, 760mm W x 600mm D (30"W X 24"D)
	AR	VV	CART, STAINLESS STEEL, HEAVY DUTY, WIRE, 1525mm L x 600mm D x 2086mm H (60"L X 24"D X 70"H), 205mm (8") CASTERS W/ BRAKE, HORIZONTAL SHELVING
	AR	VV	CHAIR, ROTARY, WITH ARMS
	AR	VV	CLOCK, BATTERY OPERATED
	AR	VV	COMPOUNDER, HIGH SPEED FOR PARENTAL NUTRITION, ELECTRIC, 120 VOLTS, 20 AMPS
	1	VV	DISPENSER, BIFOLD PAPER TOWEL, SURFACE MOUNTED
	1	VV	DISPENSER, SOAP, LIQUID, WALL MOUNTED
	AR	VV	HOOK, COAT, WALL MOUNTED
	AR	VV	LAMINAR FLOW CLEAN WORK STATION, 1830 LINEAR mm (72 LINEAR INCHES) OF WORK SPACE, 815mm D x 2050mm H (32"D X 80"H), PROVIDE 120 VOLTS, 20 AMPS
	AR	VV	MACHINE, COUNTING, TABLET AND CAPSULE, 915mm W x 600mm D (36"W X 24"D)
	1	VV	REFRIGERATOR, SELF CONTAINED, PASS-THRU, .90cm (65 CU. FT.), DISPLAY WITH GLASS DOORS, 1060mm W x 740mm D x 2060mm H (42"W X 33"D X 81"H), 120/208 VOLTS, SINGLE PHASE, 20 AMPS
	AR	VV	SCANNER, LASER, HAND HELD, ELECTRIC, 120 VOLTS, 20 AMPS
	AR	VV	SCANNER, LASER, HAND HELD, ELECTRONIC, 120 VOLTS, 20 AMPS
	AR	VV	COMPUTER, PRINTER
	AR	VV	PC, COMPUTER SYSTEM, WITH KEYBOARD

Design Standards

Intravenous Admixture and Aseptic Transfer

ARCHITECTURAL

Ceiling:	Acoustic lay-in ceiling tile with washable surface
Ceiling Ht:	2740 mm (9'-0")
Wall Finish:	Painted Gypsum Wallboard
Wainscot:	--
Base:	Ceramic Tile
Floor Finish:	Ceramic Tile
Slab Depr:	--
Notes:	1120 (3"-8") Wide Door

SPECIAL EQUIPMENT

None

LIGHTING

General:	50 FC - 1.6 W/SF
Special:	--
Notes:	<ol style="list-style-type: none"> 1. Lighting control by area; switch(es) at room entrance. 2. 600 x 1200 mm (2'x4') recessed fluorescent light fixture, acrylic prismatic lens, W/3-F32T8 lamps, 3500° K CRI=75 (minimum)

POWER

General:	1600 W (Receptacles)
Emergency:	2000 W (Refrigerators)
Notes:	<ol style="list-style-type: none"> 1. Junction box for 120V power connection to visual clarity inspection cabinet. 2. Junction box for 120V power connection to laminar flow work station on emergency power. 3. Junction box for 120V power connection to pass-through refrigerator station on emergency power. 4. Junction box for 120V power connection to tablet and capsule counting machine.

COMMUNICATIONS

ADP:	--
Radio:	--
Telephone:	Yes
Intercom:	--
Pub. Addr:	--
Notes:	--

HEATING, VENTILATING AND AIR CONDITIONING

Dry Bulb Temp Cooling:	22°C (72°F)
Dry Bulb Temp Heating:	22°C (72°F)
Minimum % Outside Air:	100
100% Exhaust Air:	Yes
Noise Criteria:	NC-40
Steam:	--
Relative Humidity/Cooling:	50%
Relative Humidity/Heating:	30%
Minimum Air Changes/Hr.:	10
Room Pressure:	See notes below
AC Load Equipment:	anteroom 32 w/sf (3 w/sf) buffer room 64 w/sf(6 w/sf)
Number of People:	8
Special Exhaust:	--
Notes:	

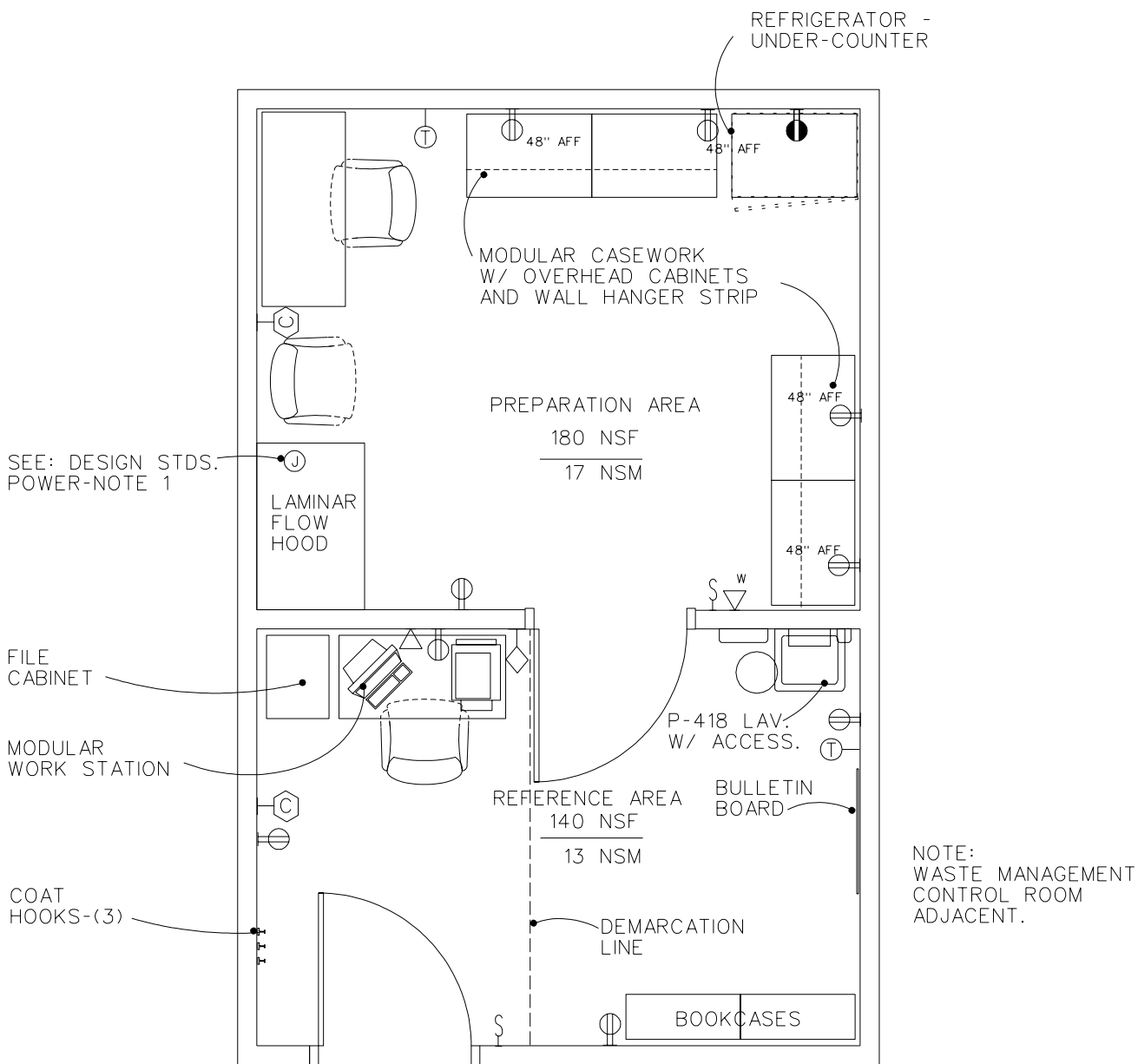
1. Maintain admixture (buffer room) under positive pressure with respect to Ante Room.
2. Maintain Ante Room under positive pressure with respect to Corridor.
3. AC load due to equipment is based on use of water-cooled pass-through refrigerator. If air-cooled refrigerator is used increase heat load correspondingly.
4. HVAC System for Buffer Room (Risk Level II) to be based on 100% outdoor air, HEPA filtered supply air with 100% exhaust from the room.
5. Laminar flow clean work station is self-contained and does not require exhaust to outside the building
6. Provide minimum 12 air changes per hour for Buffer Room and Ante Room

PLUMBING AND MEDICAL GASES

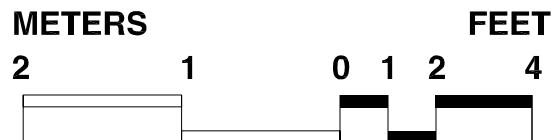
Cold Water:	Yes
Hot Water:	Yes
Laboratory Air:	--
Laboratory Vacuum:	--
Sanitary Drain:	--
Reagent Grade Water:	Yes
Medical Air:	--
Medical Vacuum:	--
Oxygen:	--
Notes:	1. Sanitary drain and vent need to be the chemical resistant type.

Equipment & Utility Plan Oncology Drugs

FINAL DRAFT 11-30-95
REVISED MARCH 1997

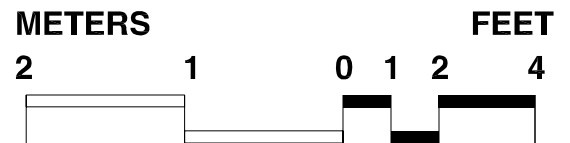
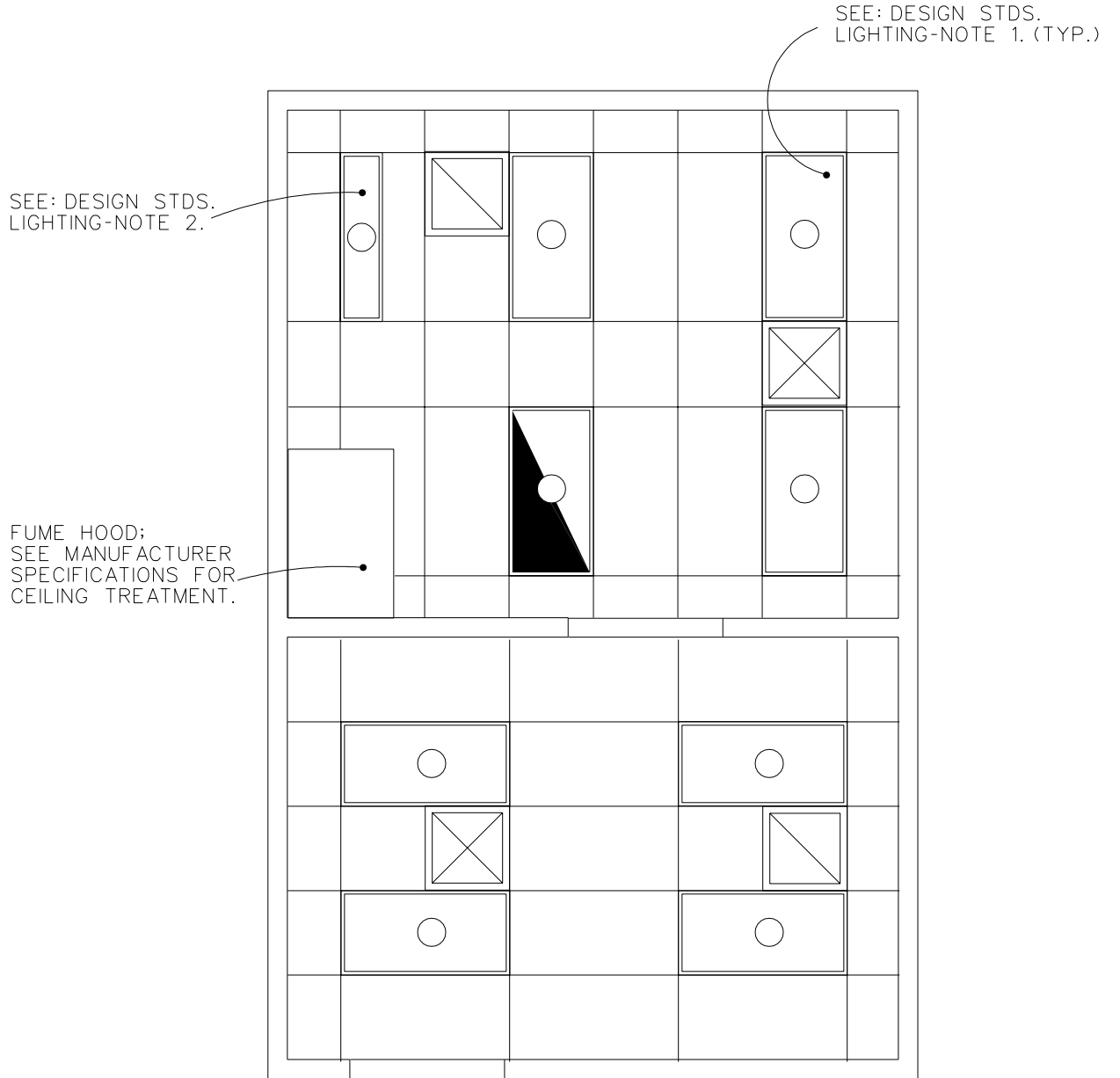


320 NSM
30 NSF



Reflected Ceiling Plan Oncology Drugs

FINAL DRAFT 11-30-95
REVISED MARCH 1997



Design Standards Oncology Drugs

ARCHITECTURAL

Ceiling:	Acoustic lay-in ceiling tile
Ceiling Ht:	2740 mm (9'-0")
Wall Finish:	Paint
Wainscot:	--
Base:	Integral welded seam sheet flooring base
Floor Finish:	Welded seam sheet flooring
Slab Depr:	--
Notes:	1. 1060mm (3'-6") Wide Door

SPECIAL EQUIPMENT

None

LIGHTING

General:	70 FC
Special:	--
Notes:	<ol style="list-style-type: none"> 1. 600 x 1200 mm (2'x4') recessed fluorescent light fixture, acrylic prismatic lens, W/2-F32T8 lamps, 4100° K CRI=85 (minimum) 2. 300mm x 1300mm (1'x4") recessed fluorescent light fixture, acrylic prismatic lens, W/1-F32T8 lamps, 4100° K

POWER

General:	2800W (Receptacles)
Emergency:	2000W (Receptacles)
Notes:	1. Junction box for Laminar Flow Hood on emergency power.

COMMUNICATIONS

ADP:	Yes
Radio:	--
Telephone:	Yes
Intercom:	Yes
Pub. Addr:	--
Notes:	--

HEATING, VENTILATING AND AIR CONDITIONING

Dry Bulb Temp Cooling:	22°C (72°F)
Dry Bulb Temp Heating:	22°C (72°F)
Minimum % Outside Air:	--
100% Exhaust Air:	Yes
Noise Criteria:	NC-40
Steam:	--
Relative Humidity/Cooling:	50%
Relative Humidity/Heating:	30%
Minimum Air Changes/Hr.:	12 (Prep Area)
Room Pressure:	Negative for Prep Area Equal for reference area with respect to corridor
AC Load Lighting:	22 w/sm (2 w/sf) both rooms
AC Load Equipment:	194 w/sm (18 w/sf)
Number of People:	4 per room
Special Exhaust:	Provide dedicated exhaust system for Laminar Flow H12-B2 hood. See HVAC Design Manual for Hospital Projects.

Notes: --

PLUMBING AND MEDICAL GASES

Cold Water:	--
Hot Water:	--
Laboratory Air:	--
Laboratory Vacuum:	--
Sanitary Drain:	--
Reagent Grade Water:	--
Medical Air:	--
Medical Vacuum:	--
Oxygen:	--
Notes:	--

Equipment Guide List

Oncology Drugs

SYMBOL	QTY	AI	DESCRIPTION
REFERENCE AREA			
P-418	1	CC	LAVATORY, SENSOR CONTROL (PG-18-1: MCS 15450, VOL3, SD 380)
	1	VV	WORK STATION, MODULAR
	1	VV	CHAIR, ROTARY, WITH ARMS
	1	VV	CABINET, FILING (LETTER SIZE) 5 DRAWER, APPROX. 381mm x 635mm x 1524mm (15" x 25" x 60")
	1	VV	BOOKCASE, SECTIONAL, EACH SECTION, 838mm x 330mm x 381mm (33" x 13" x 15") WITH 254mm (10") BASE
	1	VV	BULLETIN BOARD, APPROX. 914mm x 914mm (36" x 36")
	AR	VV	CLOCK, BATTERY OPERATED
	AR	CC	RECEPTACLE, ELECTRICAL, DUPLEX, 120 VOLT, 20 AMP (PG-18-1, MCS 16140, H-18-3, CS 801 3)
	1	VV	DISPENSER, PAPER POWEL, SURFACE MOUNTED
	1	VV	DISPENSER, SOAP, LIQUID, WALL MOUNTED
	1	VV	RECEPTACLE, WASTE, STEP-ON TYPE, APPROX. 305mm (12") DIAMETER
	AR	VV	HOOK, COAT, WALL MOUNTED
PREPARATION AREA			
H7-48	AR	CC	BIOLOGICAL SAFETY CABINET (LAMINAR FLOW) CLASS II, TYPE B2 100% DIRECT EXHAUSTED AIR THROUGH WORK SPACE, 1219mm x 787mm x 2438mm (48" x 31" x 96"), WITH CUP SINK, AIR, VACUUM AND COLD WATER OUTLETS, 120 VOLTS, 20 AMP RECEPTACLES, GAS OUTLETS NOT REQUIRED (PG-18-1 & PG-18-6, MCS 11610)
	1	VV	CHAIR, ROTARY, WITH ARMS
J-2	1	CF	SINK, CORROSION RESISTING STEEL, 555mm x 405mm x 205mm (22"x16"x8")
	AR	CF	MODULAR CASEWORK, W/OVERHEAD CABINETS AND WALL HANGER STRIP
	AR	CF	REFRIGERATOR, .14 m3 (5 CU. FT), 120 VOLT, 20 AMP, UNDERCOUNTER, 610mm x 955mm (24" x 38")
	AR	VV	CLOCK, BATTERY OPERATED
	AR	CC	RECEPTACLE, ELECTRICAL, DUPLEX, 120 VOLT, 20 AMP (PG-18-1, MCS 16140, H-18-3, CS 801 3)
	AR	VV	COMPUTER, PRINTER
	AR	VV	PC, COMPUTER SYSTEM, WITH KEYBOARD