

Section 4

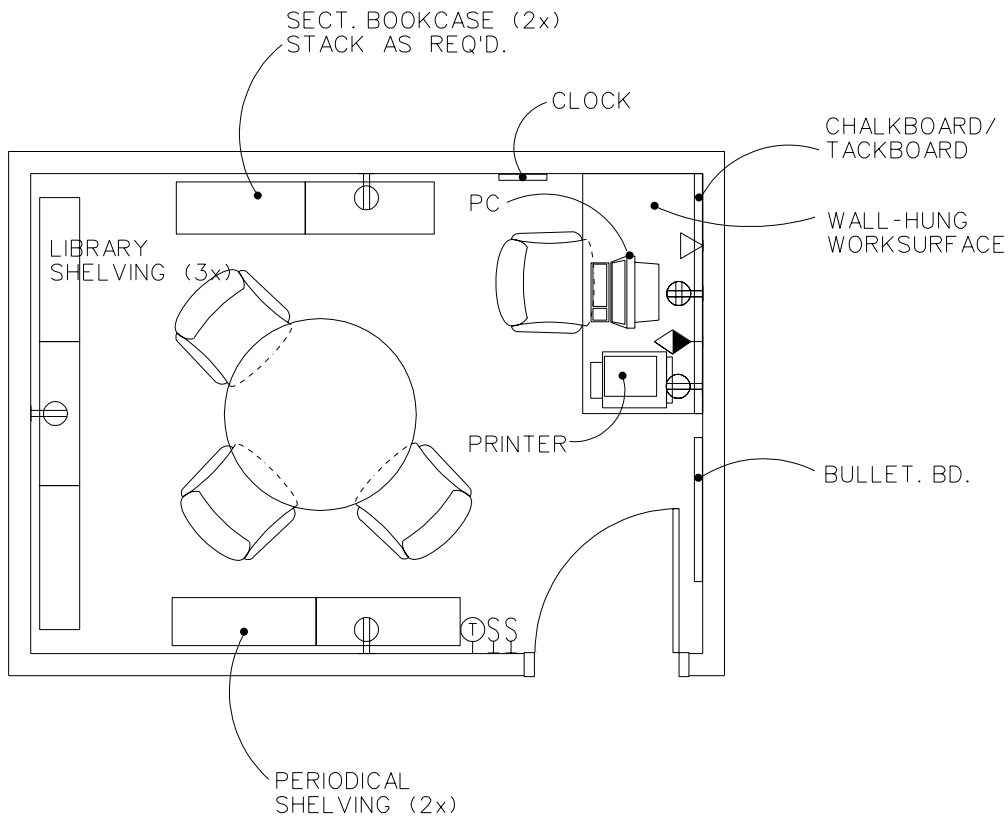
**Design Guide Plates
and Data Sheets:
Pharmacy Specialized
Program**

Guide Plate Series	Plate Number
--------------------	--------------

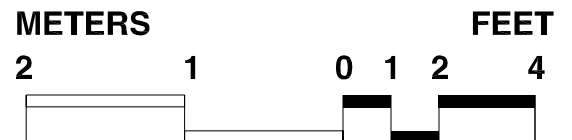
Drug Information Service	
Equipment & Utility Plan	4-1
Reflected Ceiling Plan.....	4-1
Design Standards	4-1
Equipment Guide List	4-1

Equipment & Utility Plan Drug Information Service

First Draft 8-14-96
Revised June 97

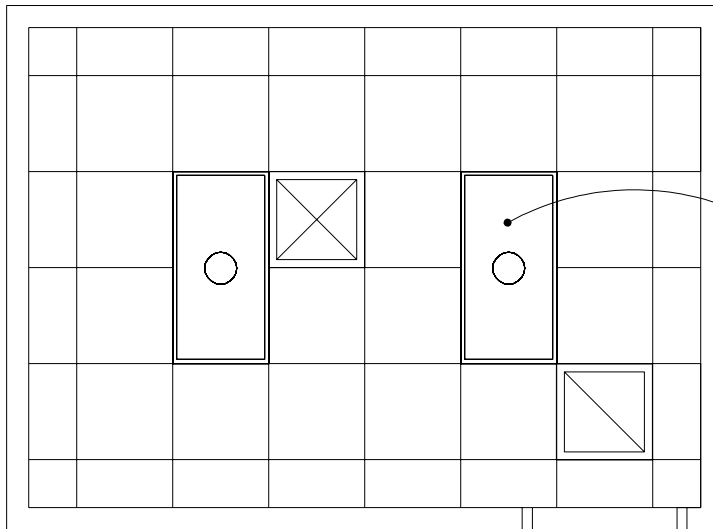


13.0 NSM
140 NSF

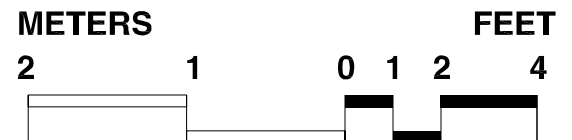


Reflected Ceiling Plan Drug Information Service

First Draft 8-14-96
Revised June 97



SEE: DESIGN STDS.
LIGHTING-NOTE 2.
(TYP.)



Design Standards

Drug Information Service

ARCHITECTURAL

Ceiling:	Acoustic Lay-In Ceiling Tile
Ceiling Ht:	2740 MM (9'-0")
Wall Finish:	Painted Gypsum Wallboard
Wainscot:	--
Base:	Resilient base
Floor Finish:	Carpet or Vinyl Composition Tile
Slab Depr:	--
Notes:	--

SPECIAL EQUIPMENT

None

LIGHTING

General:	1.7 w/sf538 lx (50 FC)
Special:	--
Notes:	1. Dual-level switching provided 50/15 FC levels.
	2. 600 x 1200mm (2'x4') recessed fluorescent light fixture, parabolic louver lens, W/3-F32T8 lamps, 3500°K, CRI=75 (Minimum)

POWER

General:	1200W (receptacles)
Emergency:	--
Notes:	--

COMMUNICATION

ADP:	Yes
Radio:	--
Telephone:	Yes
Intercom:	--
Pub. Addr:	--
Notes:	--

HEATING, VENTILATING AND AIR CONDITIONING

Dry Bulb Temp Cooling:	25°C (78°F)
Dry Bulb Temp Heating :	22°C (72°F)
Minimum % Outside Air:	15
100% Exhaust Air:	--
Noise Criteria:	NC-35
Steam:	--
Relative Humidity/Cooling:	50%
Relative Humidity/Heating:	30%
Minimum Air Changes/Hr.:	4
Room Pressure:	0
AC Load Lighting:	18 w/sm (1.7 w/sf)
AC Load-Equipment:	43 w/hr (4 w/hr)
Number of People:	3
Special Exhaust:	--
Notes:	--

PLUMBING AND MEDICAL GASES

Cold Water:	--
Hot Water:	--
Laboratory Air:	--
Laboratory Vacuum:	--
Sanitary Drain:	--
Reagent Grade Water:	--
Medical Air:	--
Medical Vacuum:	--
Oxygen:	--
Notes:	--

Equipment Guide List

Drug Information Service

SYMBOL	QTY	AI	DESCRIPTION
AR		CC	SHELVING, FREESTANDING STEEL, LIBRARY, SINGLE FACED UNITS, WITH ADJUSTABLE SHELVES, 915mm W x 255mm D x 2285mm H (36"W X 10"D X 90"H) (PG-18-1, MCS 11052; PG-18-4)
AR		CC	SHELVING, SINGLE FACED UNITS, PERIODICAL, WITH SLOPING AND ADJUSTABLE SHELVES, 915mm W x 305mm D x 2285mm H (36"W X 12"D X 90"H) (PG-18-1, MCS 11052; PG-18-4)
AR		VV	BOOKCASE, SECTIONAL (EACH SECTION, 315mm W x 330mm D x 380mm H (33"W X 13"D X 15"H)) WITH 255mm H (10"H) BASE
1		VV	BULLETIN BOARD, APPROX., 915mm W x 915mm H (36"W X 36"H)
AR		VV	CHAIR, ROTARY, WITH ARMS
AR		VV	CHAIR, STRAIGHT, WITH ARMS
1		VV	CHALKBOARD/TACKBOARD COMBINATION, 1525mm W x 1220mm H (60"W x 48"H)
AR		VV	CLOCK, BATTERY OPERATED
AR		VV	COMPUTER, PRINTER
AR		VV	PC, COMPUTER SYSTEM, WITH KEYBOARD
1		VV	TABLE, OCCASIONAL, 1220mm (48") DIA.
AR		CF	CABINET, UNDERCOUNTER, 3 DRAWER, 395mm W x 555mm D x 760mm H (15"W x 22"D x 30"H)
AR		CF	COUNTER, TOP, HIGH PRESSURE LAMINATED, DECORATIVE 760mm W x 1525m L (30"W x 60"L)
1		CC	RECEPTACLE, ELECTRICAL, QUADAPLEX FOR COMPUTER EQUIPMENT ITEMS (PG-18-1, MCS 16140, H18-3, CS 866-1)
AR		CC	RECEPTACLE, ELECTRICAL, DUPLEX, 120 VOLTS, 20 AMPS (PG-18-1, MCS 16140: H-18-3, CS 801-3)