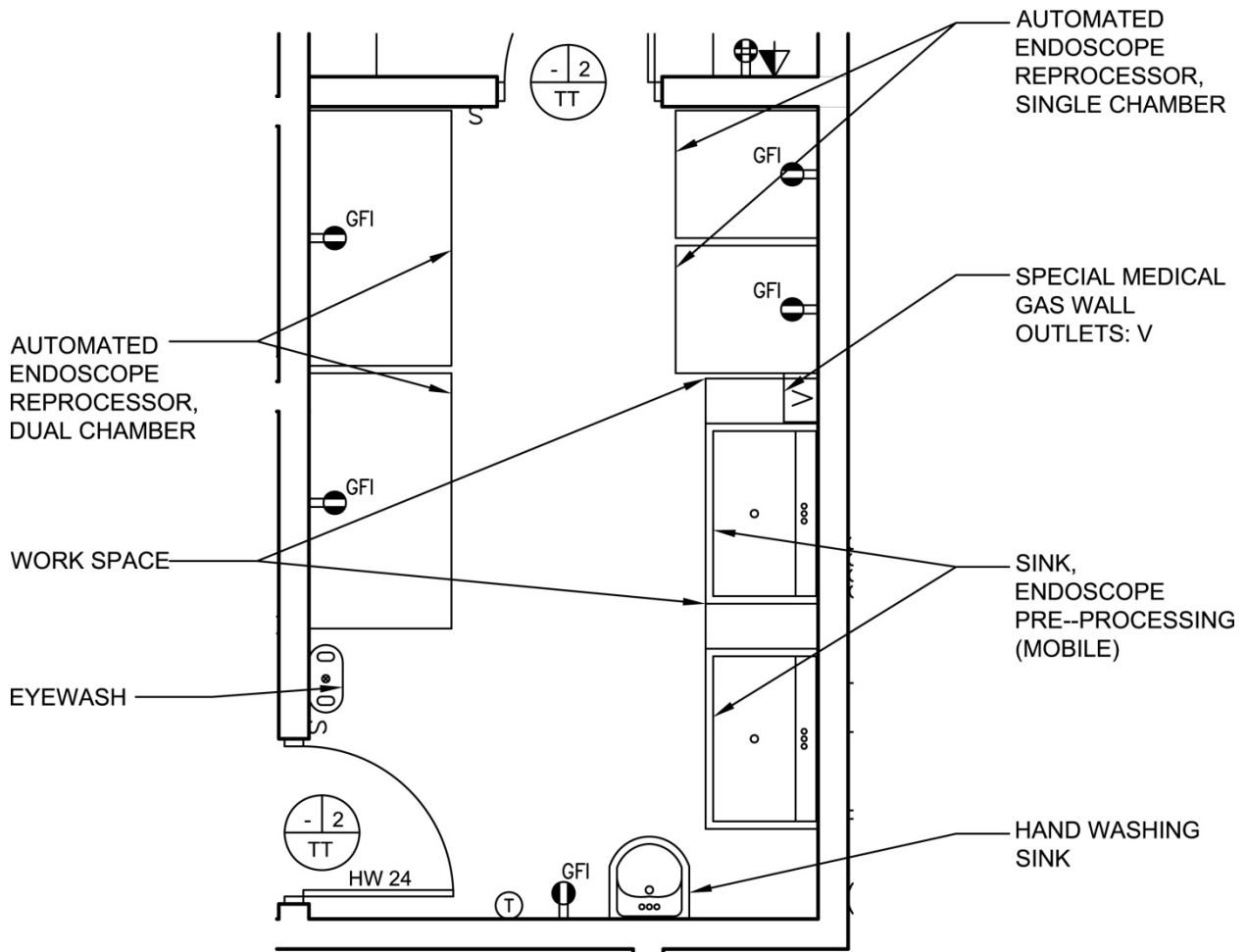
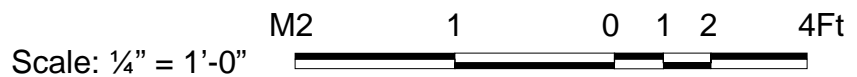


Endoscope Processing / High Level Disinfection (USCL2)

Floor Plan

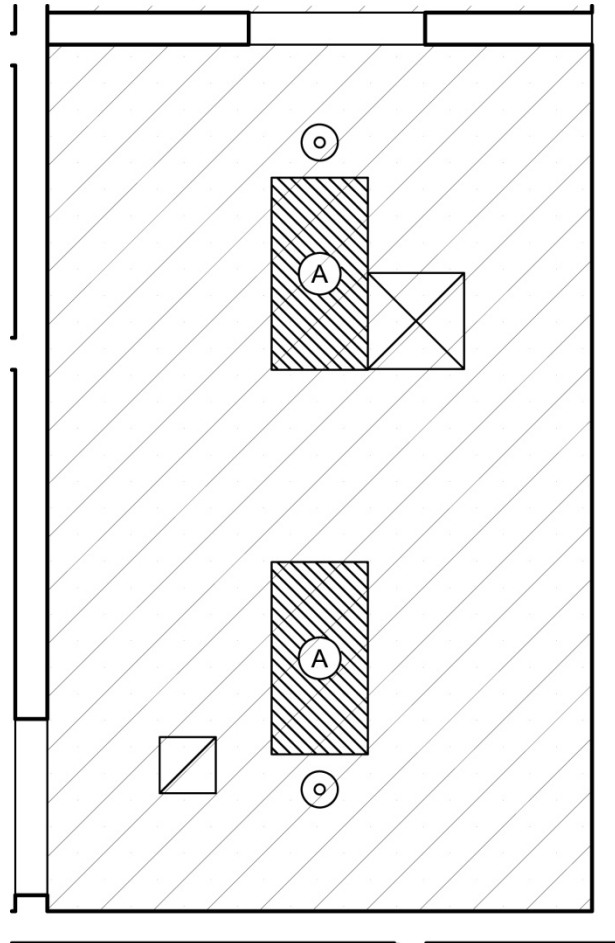


200 NSF / 18.6 NSM



NOTE: Guide plates are graphical representations of selected room types, illustrating the integration of space, components, systems, and equipment. They provide typical configurations and general technical guidance, and are not intended to be project specific. Specific infrastructure design requirements are contained in VA Design Manuals and Space Planning Criteria located in the VA Technical Information Library.

Endoscope Processing / High Level Disinfection (USCL2)
Reflected Ceiling Plan



200 NSF / 18.6 NSM

Scale: 1/4" = 1'-0" M2 1 0 1 2 4Ft

NOTE: Guide plates are graphical representations of selected room types, illustrating the integration of space, components, systems, and equipment. They provide typical configurations and general technical guidance, and are not intended to be project specific. Specific infrastructure design requirements are contained in VA Design Manuals and Space Planning Criteria located in the VA Technical Information Library.

Endoscope Processing / High Level Disinfection (USCL2)

Design Standards

ARCHITECTURAL

Ceiling:	RES-W/GWB (SC)
Ceiling Height:	9'-0" (2700 mm)
Wall Finish:	RES-W/GWB (SC)
Wainscot:	--
Base:	RES
Floor Finish:	RES3
Slab Depression:	--
Sound Protection:	--
Notes:	--

SPECIAL EQUIPMENT

	--
--	----

LIGHTING

General:	50 FC – 1 W/SF
Special:	As Shown
Notes:	

- 1) Fixture A1: 2'x4' (600 mm x 1200 mm) recessed, flange mounted fluorescent light fixture, UL listed for wet location, prismatic lens with gasketing, w/ F32T8 lamps 3500•K, CRI=70 (minimum).).
- 2) The foot-candle level is average maintained.
- 3) Exact quantity, location, and lamping of light fixtures shall be chosen to meet the foot-candle requirement.

POWER

General:	As Shown
Emergency:	All
Notes:	--

COMMUNICATION/SPECIAL SYSTEMS

Data:	--
Telephone:	Yes
Intercom:	--
Nurse Call:	--
Public Address:	--
Radio/Entertainment:	--
MATV:	--
CCTV:	--
MID:	--
Security/Duress:	--
VTEL:	--
VA Satellite TV:	--
Notes:	--

HEATING, VENTILATING AND AIR CONDITIONING

Inside Design Conditions:	
Dry-Bulb Temperature:	70F-75F (21C-24C)
Relative Humidity:	30% - 55%
Minimum Total Air Changes per Hour:	10
Room Air Exhaust Required:	Yes, 100%
Special Exhaust or General Exhaust:	Special Exhaust
Room Air Return Permitted:	No
Room Air Balance:	Negative (-)

PLUMBING AND MEDICAL GASES

Cold Water:	Yes
Hot Water:	Yes
Non-Patient Medical Air:	--
Laboratory Vacuum:	Yes
Sanitary Drain:	Yes
Reagent Grade Water:	Yes
Medical Air:	--
Medical Vacuum:	--
Oxygen:	--
Notes:	--

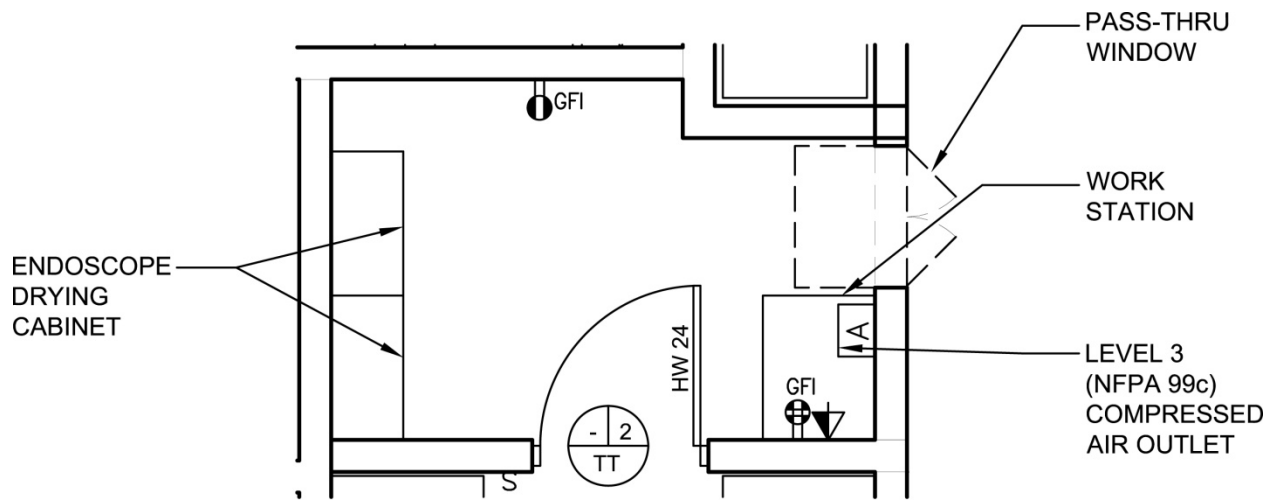
Endoscope Processing / High Level Disinfection (USCL2)

Equipment List

JSN	SYMBOL	QTY	AI	DESCRIPTION
		2		<u>Automated Endoscope Reprocessor, Dual Chamber</u> Automated Endoscope Reprocessor for flexible endoscopes. Unit shall have dual reprocessing chambers. Unit shall be equipped with a visual display and audible alarm. An integrated printer is required for system performance record for each cycle. Installation Dimensions H 61 x W 68 x D 38.
		2		<u>Automated Endoscope Reprocessor, Single Chamber</u> Automated Endoscope Reprocessor for flexible endoscopes. Unit shall have single reprocessing chamber. Unit shall be equipped with a visual display and audible alarm. An integrated printer is required for system performance record for each cycle. Installation Dimensions H 61 x W 34 x D 38.
		2		<u>Sink, Endoscope Pre-Processing, Mobile</u> Semi automated sink for pre-processing endoscopes prior to high level disinfection or sterilization. Installation Dimensions H 50 x W 48 x D 30.
		AR		<u>Handwashing Sink</u> Bowl size approximately H 7" x W 15" x D 10".
		AR		Eye wash station.
		AR		Equipment to check scopes for leaks.
		AR		Equipment to effectively clean scopes - either mechanical washer or special sink with capability to purge scope channels.
		AR		Equipment to sterilize scopes.
		AR		Equipment for chemical scope soak, with capability to eliminate fumes.
		AR	CC	Receptacle, electrical, duplex, 120 volt, ground fault interrupter (PG-18-1, MCS 26 27 26).

Scope Storage (ZSPD2)

Floor Plan



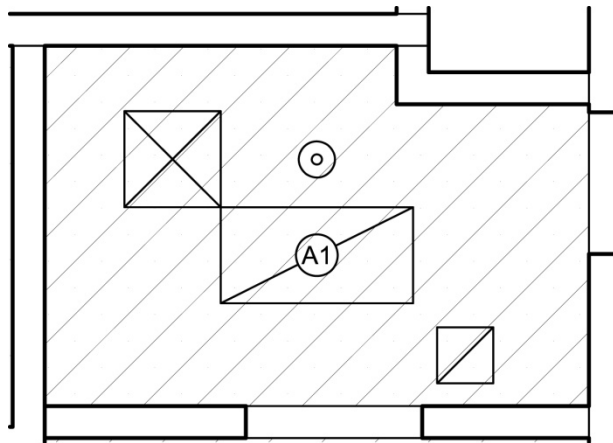
80 NSF / 7.4 NSM



NOTE: Guide plates are graphical representations of selected room types, illustrating the integration of space, components, systems, and equipment. They provide typical configurations and general technical guidance, and are not intended to be project specific. Specific infrastructure design requirements are contained in VA Design Manuals and Space Planning Criteria located in the VA Technical Information Library.

Scope Storage (ZSPD2)

Reflected Ceiling Plan



80 NSF / 7.4 NSM



NOTE: Guide plates are graphical representations of selected room types, illustrating the integration of space, components, systems, and equipment. They provide typical configurations and general technical guidance, and are not intended to be project specific. Specific infrastructure design requirements are contained in VA Design Manuals and Space Planning Criteria located in the VA Technical Information Library.

Scope Storage (ZSPD2)

Design Standards

ARCHITECTURAL

Ceiling:	RES-W/GWB (SC)
Ceiling Height:	9'-0" (2700 mm)
Wall Finish:	RES-W/GWB (SC)
Wainscot:	--
Base:	RES
Floor Finish:	RES3
Slab Depression:	--
Sound Protection:	--
Notes:	--

SPECIAL EQUIPMENT

	--
--	----

LIGHTING

General:	50 FC – 1 W/SF
Special:	As Shown
Notes:	

- 1) Fixture A1: 2'x4' (600 mm x 1200 mm) recessed, flange mounted fluorescent light fixture, UL listed for wet location, prismatic lens with gasketing, w/ F32T8 lamps 3500•K, CRI=70 (minimum).).
- 2) The foot-candle level is average maintained.
- 3) Exact quantity, location, and lamping of light fixtures shall be chosen to meet the foot-candle requirement.

POWER

General:	As Shown
Emergency:	All
Notes:	--

COMMUNICATION/SPECIAL SYSTEMS

Data:	Yes
Telephone:	Yes
Intercom:	--
Nurse Call:	--
Public Address:	--
Radio/Entertainment:	--
MATV:	--
CCTV:	--
MID:	--
Security/Duress:	--
VTEL:	--
VA Satellite TV:	--
Notes:	--

HEATING, VENTILATING AND AIR CONDITIONING

Inside Design Conditions:	None
Dry-Bulb Temperature:	--
Relative Humidity:	--
Minimum Total Air Changes per Hour:	6
Room Air Exhaust Required:	Yes, 100%
Special Exhaust or General Exhaust:	General Exhaust
Room Air Return Permitted:	No
Room Air Balance:	Negative (-)

PLUMBING AND MEDICAL GASES

Cold Water:	Yes
Hot Water:	Yes
Non-Patient Medical Air::	Yes
Laboratory Vacuum:	--
Sanitary Drain:	Yes
Reagent Grade Water:	Yes
Medical Air:	--
Medical Vacuum:	--
Oxygen:	--
Notes:	--

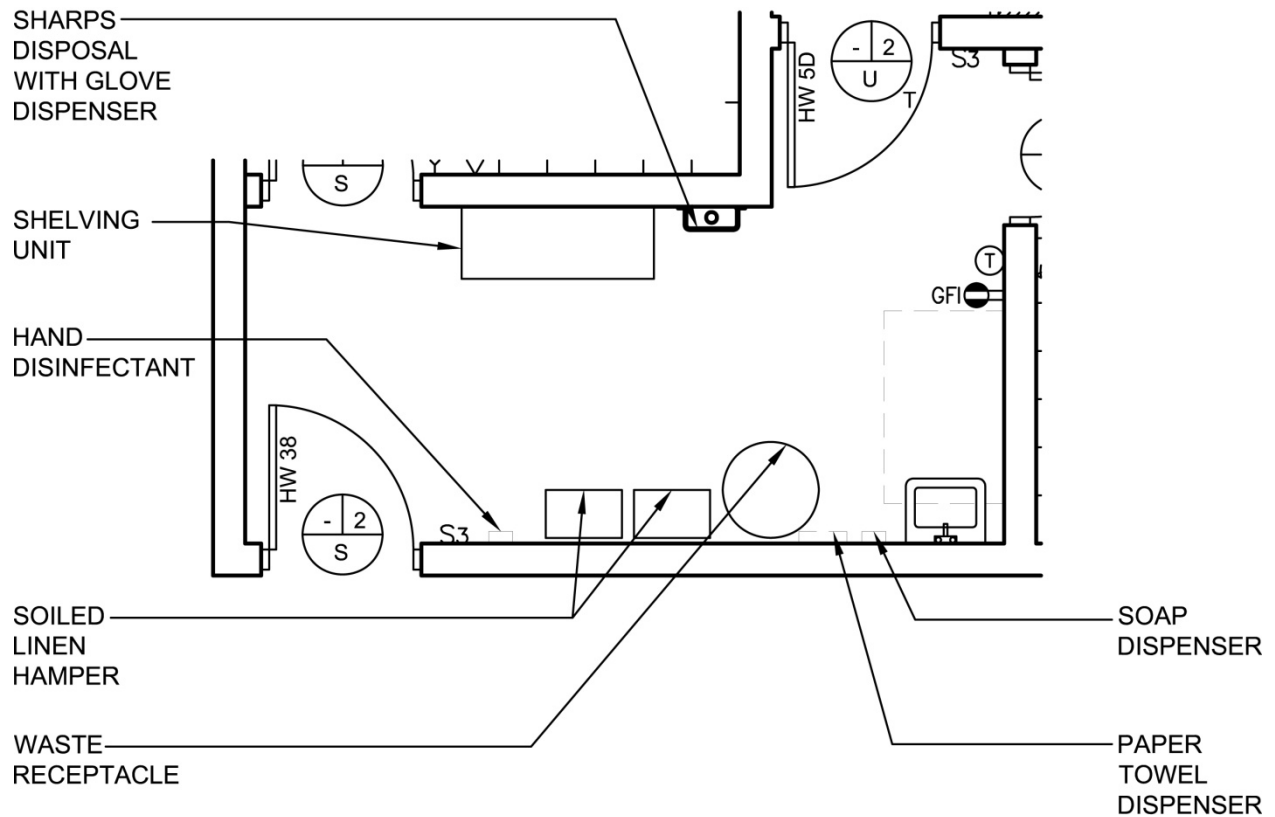
Scope Storage (ZSPD2)

Equipment List

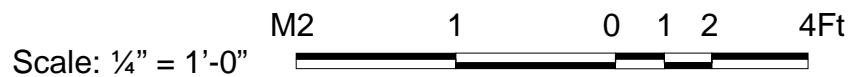
JSN	SYMBOL	QTY	AI	DESCRIPTION
A1010		1	CC	Telephone/Data Combination Outlet (PG-18-1, MCS 27 31 00) Telephone/data outlet location.
		2		<u>Cabinet, Drying, Endoscope</u> Ventilated, HEPA filtered, drying cabinet for storage of flexible endoscopes. Unit shall have tempered glass, hinged single or double door with interior illumination. Installation Dimensions H 93 x W 36 x D 18.
		AR		Equipment to dry scopes.
		AR	CC	Receptacle, electrical, duplex, 120 volt, ground fault interrupter (PG-18-1, MCS 26 27 26).
		1	CC	Receptacle, electrical, quadruplex, ground fault interrupter, for computer equipment items (PG-18-1, MCS 26 27 26).

Decontamination / Ante-Room / PPE / Gowning (CSDE4)

Floor Plan



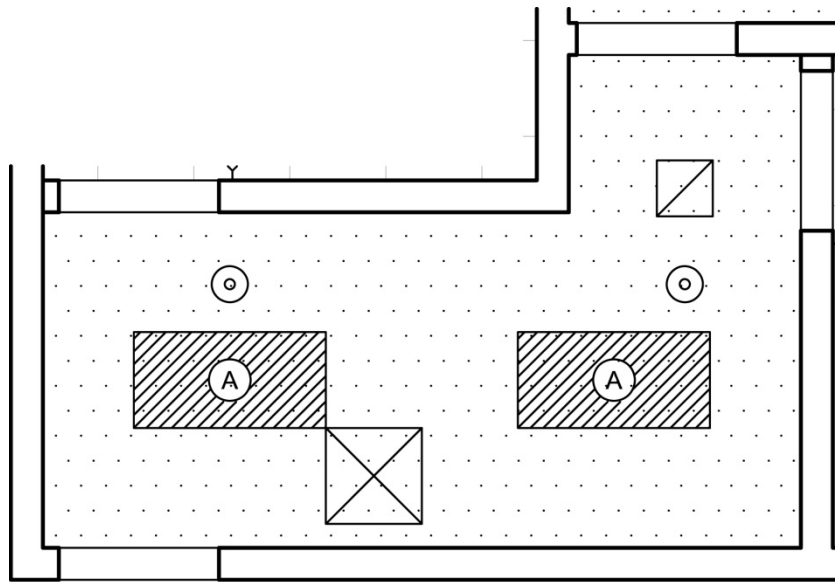
125 NSF / 11.5 NSM



NOTE: Guide plates are graphical representations of selected room types, illustrating the integration of space, components, systems, and equipment. They provide typical configurations and general technical guidance, and are not intended to be project specific. Specific infrastructure design requirements are contained in VA Design Manuals and Space Planning Criteria located in the VA Technical Information Library.

Decontamination / Ante-Room / PPE / Gowning (CSDE4)

Reflected Ceiling Plan



125 NSF / 11.5 NSM



NOTE: Guide plates are graphical representations of selected room types, illustrating the integration of space, components, systems, and equipment. They provide typical configurations and general technical guidance, and are not intended to be project specific. Specific infrastructure design requirements are contained in VA Design Manuals and Space Planning Criteria located in the VA Technical Information Library.

Decontamination / Ante-Room / PPE / Gowning (CSDE4)**Design Standards****ARCHITECTURAL**

Ceiling:	RES-W/GWB(SC)
Ceiling Height:	9'-0" (2700 mm)
Wall Finish:	RES-W/GWB(SC)
Wainscot:	--
Base:	RES
Floor Finish:	RES
Slab Depression:	--
Sound Protection:	--
Notes:	--

SPECIAL EQUIPMENT

--

LIGHTING

General:	30 FC – 1.5 W/SF (MIN)
Special:	As Shown
Notes:	

- 1) Fixture A: 2'x4' (600 mm x 1200 mm) recessed, grid mounted fluorescent light fixture, UL listed for wet location, prismatic lens with gasketing, w/ F32T8 lamps 3500•K, CRI=70 (minimum).
- 2) The foot-candle level is average maintained.
- 3) Exact quantity, location, and lamping of light fixtures shall be chosen to meet the foot-candle requirement.

POWER

General:	As Shown
Emergency:	All
Notes:	--

COMMUNICATION/SPECIAL SYSTEMS

Data:	--
Telephone:	--
Intercom:	--
Nurse Call:	--
Public Address:	--
Radio/Entertainment:	--
MATV:	--
CCTV:	--
MID:	--
Security/Duress:	--
VTEL:	--
VA Satellite TV:	--
Notes:	--

HEATING, VENTILATING AND AIR CONDITIONING

Inside Design Conditions:	
Dry-Bulb Temperature:	70F-75F (21C-24C)
Relative Humidity:	30% - 55%
Room Air Exhaust Required:	No
Special Exhaust or General Exhaust:	None
Room Air Return Permitted:	No
Room Air Balance:	Negative (-)
Notes:	

PLUMBING AND MEDICAL GASES

Cold Water:	Yes
Hot Water:	Yes
Laboratory Air:	--
Laboratory Vacuum:	--
Sanitary Drain:	--
Reagent Grade Water:	--
Medical Air:	--
Medical Vacuum:	--
Oxygen:	--
Notes:	--

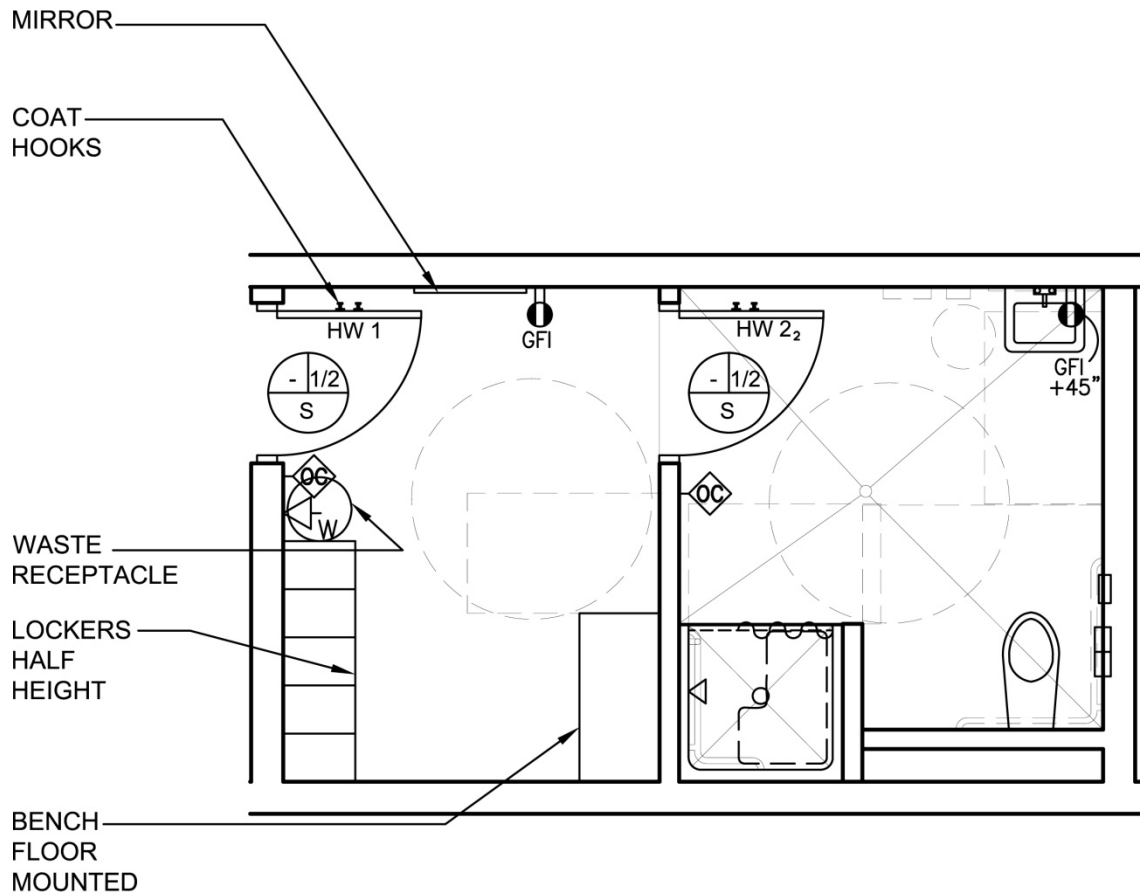
Decontamination / Ante-Room / PPE / Gowning (CSDE4)

Equipment List

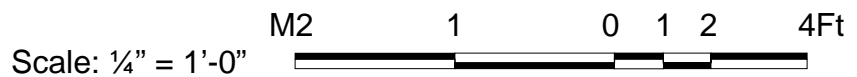
JSN	SYMBOL	QTY	AI	DESCRIPTION
A5106		1	VV	<u>Waste Disposal Unit, Sharps with Glove Dispenser</u> The unit is designed for the disposal of sharps and complies with OSHA guidelines for the handling of sharps. It shall house a 5 quart container and be capable of being mounted on a wall. It shall have a glove dispenser attached. The unit shall be secured by a locked enclosure.
		AR		Small linen collection hamper(s)
F2020		1	VV	<u>Can, Trash, 44 Gallon</u> Forty four (44) gallon trash can, 32" high X 24" diameter, with lid. Used to collect and transport refuse from a point of origin to point of disposal (example: from soiled utility or a nursing unit to the trash compactor at housekeeping).
		AR		Stainless steel storage for PPE.
		AR		Hand disinfectant.
				Sink.
		AR	CC	Receptacle, electrical, duplex, ground fault interrupter, 120 volt (PG-18-1, MCS 26 27 26).

Locker Rooms (Soiled Area) (LR001)

Floor Plan



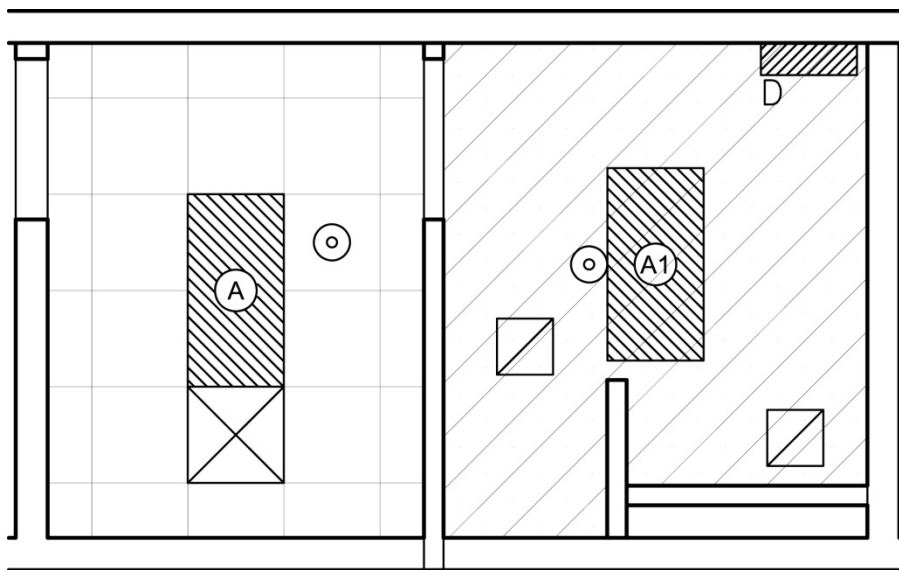
80 NSF / 7.4 NSM



NOTE: Guide plates are graphical representations of selected room types, illustrating the integration of space, components, systems, and equipment. They provide typical configurations and general technical guidance, and are not intended to be project specific. Specific infrastructure design requirements are contained in VA Design Manuals and Space Planning Criteria located in the VA Technical Information Library.

Locker Rooms (Soiled Area) (LR001)

Reflected Ceiling Plan



80 NSF / 7.4 NSM



NOTE: Guide plates are graphical representations of selected room types, illustrating the integration of space, components, systems, and equipment. They provide typical configurations and general technical guidance, and are not intended to be project specific. Specific infrastructure design requirements are contained in VA Design Manuals and Space Planning Criteria located in the VA Technical Information Library.

Locker Rooms (Soiled Area) (LR001)

Design Standards

ARCHITECTURAL

Ceiling:	AT
Ceiling Height:	9'-0" (2700 mm)
Wall Finish:	GWB
Wainscot:	
Base:	RB
Floor Finish:	VCT
Slab Depression:	--
Sound Protection:	--
Notes:	--

SPECIAL EQUIPMENT

	--
--	----

LIGHTING

General:	20 FC- 1W/SF
Special:	
Notes:	

- 1) Fixture A: 2'x4' (600 mm x 1200 mm) recessed, grid mounted fluorescent light fixture, UL listed for wet location, prismatic lens with gasketing, w/ F32T8 lamps 3500°K, CRI=70 (minimum).
Fixture D: 24" wall mounted fluorescent fixture mounted 92" (2300mm) AAF unless otherwise noted, prismatic acrylic shield, w/ F17T8 lamps, 3500°K, CRI=70 (minimum).
- 2) The foot-candle level is average maintained.
- 3) Exact quantity, location, and lamping of light fixtures shall be chosen to meet the foot-candle requirement.

POWER

General:	As Shown
Emergency:	All
Notes:	--

COMMUNICATION/SPECIAL SYSTEMS

Data:	--
Telephone:	Yes
Intercom:	Yes
Nurse Call:	--
Public Address:	--
Radio/Entertainment:	--
MATV:	--
CCTV:	--
MID:	--
Security/Duress:	--
VTEL:	--
VA Satellite TV:	--
Notes:	--

HEATING, VENTILATING AND AIR CONDITIONING

Indoor Design Conditions:	None
Dry-Bulb Temperature:	--
Relative Humidity:	--
Minimum Total Air Changes per Hour:	6
Room Air Exhaust Required:	No
Special Exhaust or General Exhaust:	None
Room Air Return Permitted:	No
Room Air Balance:	Negative (-)
Notes:	
1) Room air used as make-up for exhaust through adjoining toilet and shower.	

PLUMBING AND MEDICAL GASES

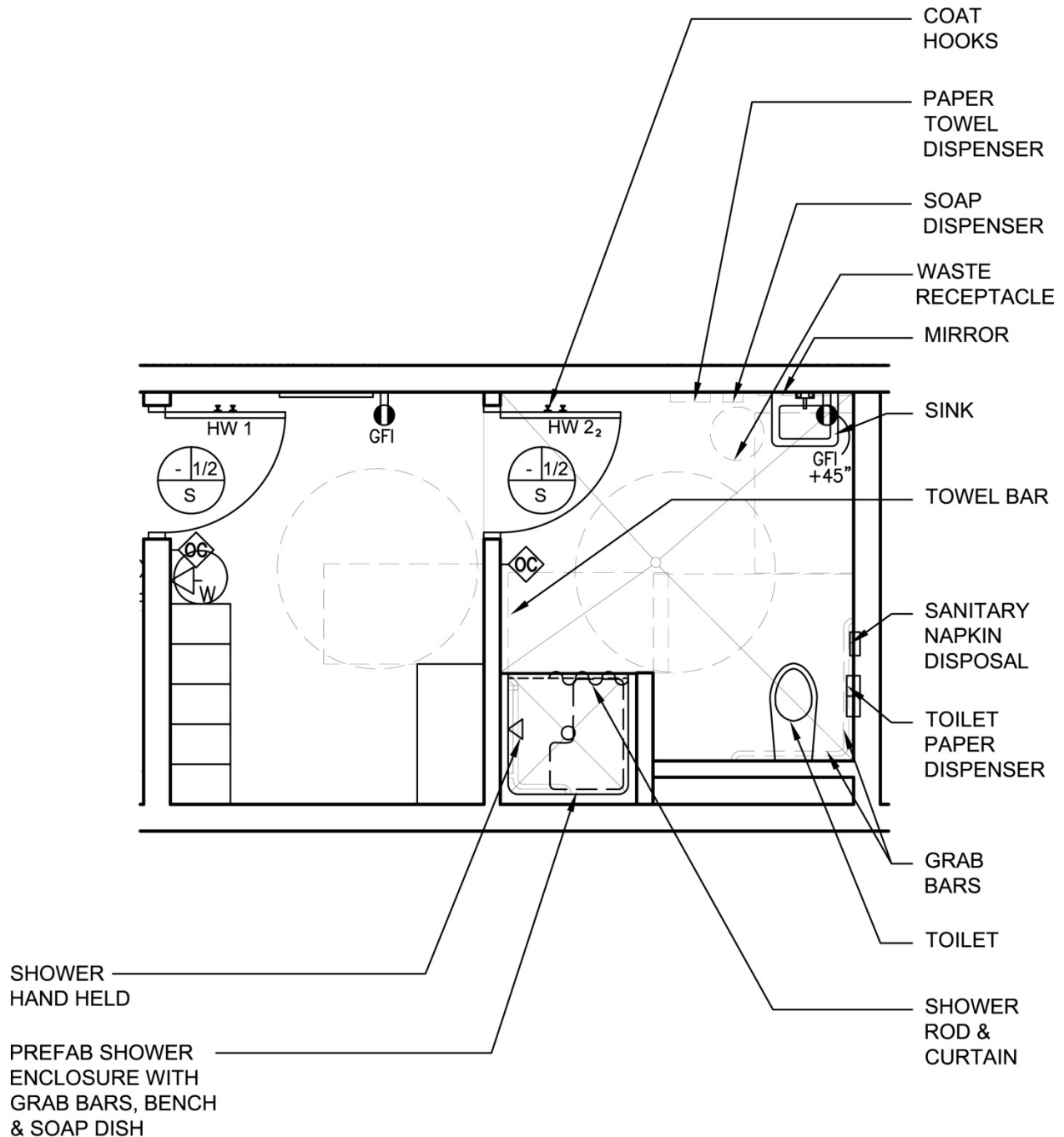
Cold Water:	Yes
Hot Water:	Yes
Laboratory Air:	--
Laboratory Vacuum:	--
Sanitary Drain:	Yes
Reagent Grade Water:	--
Medical Air:	--
Medical Vacuum:	--
Oxygen:	--
Notes:	--

Locker Rooms (Soiled Area) (LR001)

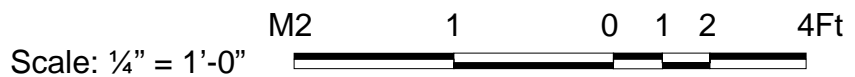
Equipment List

JSN	SYMBOL	QTY	AI	DESCRIPTION
A1010		1	CC	<u>Telecommunication Outlet (PG-18-1, MCS 27 31 00)t</u> Telecommunication outlet location.
A1012		1	CC	<u>Telephone, Wall-Mounted, One Line</u> Telephone, wall mounted, 1 line.
A1035		1	VV	<u>Locker, Single Tier</u> Locker, single tier, approximately 72" H x 12" W x 18" D. Unit includes coat hooks, hanger rod, and ventilating louvers. Door latch permits the use of a padlock. For storage of personal belongings.
A1080		AR	CC	<u>Mirror, Posture, Wall Mounted</u> Wall mounted posture mirror. Consists of a 1/4" plate glass in a sturdy corrosion resistant frame with water proof back. For educational and therapy programs.
A5020		AR	VV	<u>Bench, Locker Room, Floor Mounted – No Wood</u> Portable locker room bench. Approximately 1-1/2" thick. Benches shall be laminated hardwood with a moisture resistant sealer or anodized aluminum. Units are mounted on strong pedestals. No wood permitted.
A5145		AR	CC	<u>Hook, Garment, Double, Stainless Steel, Surface Mounted</u> A surface mounted, satin finish stainless steel, double garment hook. Equipped with a concealed mounting bracket that is secured to a concealed wall plate. For general purpose use throughout the facility to hang various items of apparel.
F2000		1	VV	<u>Basket, Wastepaper, Round, Metal</u> Round wastepaper basket, approximately 18" high X 16" diameter. This metal unit is used to collect and temporarily store small quantities of paper refuse in patient rooms, administrative areas and nursing stations.
		AR		Hamper.
		AR		Hand disinfectant.
		1	CC	Receptacle, electrical, duplex, 120 volt, ground fault interrupter (PG-18-1, MCS 26 27 26).
		1	CC	Occupancy sensor, dual technology, wall mounted. (PG-18-1, MCS 26 09 23)

Toilet & Shower Rooms (Soiled Area) (TLTS1)
 Floor Plan



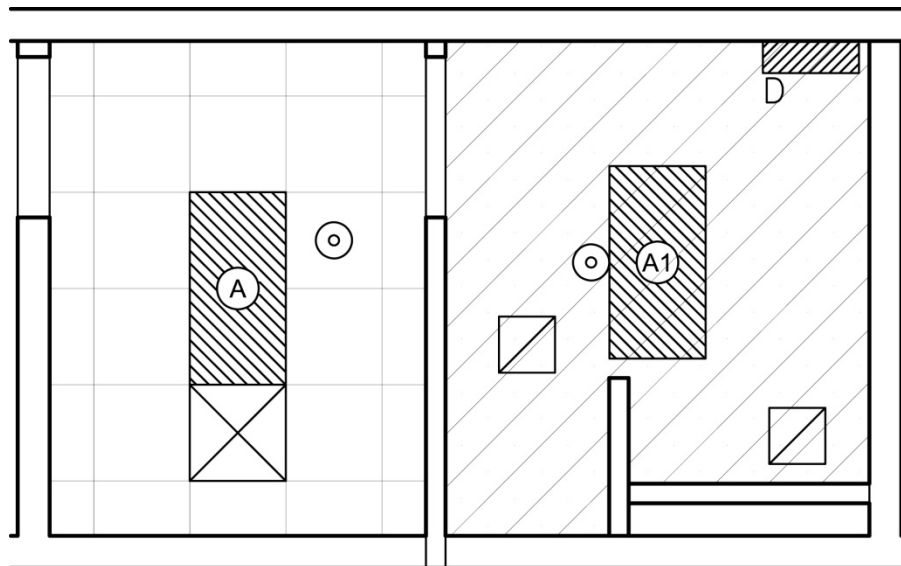
80 NSF / 7.4 NSM



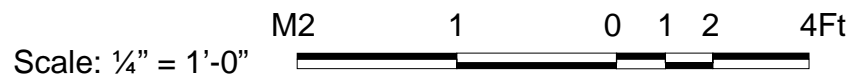
NOTE: Guide plates are graphical representations of selected room types, illustrating the integration of space, components, systems, and equipment. They provide typical configurations and general technical guidance, and are not intended to be project specific. Specific infrastructure design requirements are contained in VA Design Manuals and Space Planning Criteria located in the VA Technical Information Library.

Toilet & Shower Rooms (Soiled Area) (TLTS1)

Reflected Ceiling Plan



80 NSF / 7.4 NSM



NOTE: Guide plates are graphical representations of selected room types, illustrating the integration of space, components, systems, and equipment. They provide typical configurations and general technical guidance, and are not intended to be project specific. Specific infrastructure design requirements are contained in VA Design Manuals and Space Planning Criteria located in the VA Technical Information Library.

Toilet & Shower Rooms (Soiled Area) (TLTS1)

Design Standards

ARCHITECTURAL

Ceiling:	GWB (SC)
Ceiling Height:	9'-0" (2700 mm)
Wall Finish:	GWB1/S1, 4
Wainscot:	CT1 4'-0"
Base:	PT1
Floor Finish:	PT
Slab Depression:	--
Sound Protection:	--
Notes:	

SPECIAL EQUIPMENT

Toilet Room Accessories	--
-------------------------	----

LIGHTING

General:	30 FC-1W/SF
Special:	--
Notes:	

- 1) Fixture A1: 2'x4' (600 mm x 1200 mm) recessed, flange mounted fluorescent light fixture, UL listed for wet location, prismatic lens with gasketing, w/ F32T8 lamps 3500°K, CRI=70 (minimum).
Fixture D: 24" Wall mounted fluorescent fixture - mounted over mirror, prismatic acrylic shield, w/ F17T8 lamps, 3500°K, CRI=70 (minimum).
- 2) The foot-candle level is average maintained.
- 3) Exact quantity, location, and lamping of light fixtures shall be chosen to meet the foot-candle requirement.

POWER

General:	As Shown
Emergency:	As Shown
Notes:	--

COMMUNICATION/SPECIAL SYSTEMS

Data:	--
Telephone:	--
Intercom:	--
Nurse Call:	--
Public Address:	--
Radio/Entertainment:	--
MATV:	--
CCTV:	--
MID:	--
Security/Duress:	--
VTEL:	--
VA Satellite TV:	--
Notes:	--

HEATING, VENTILATING AND AIR CONDITIONING

Indoor Design Conditions:	None
Minimum Total Air Changes per Hour:	10
Room Air Exhaust Required:	Yes, 100%
Special Exhaust or General Exhaust:	General Exhaust
Room Air Return Permitted:	No
Room Air Balance:	Double Negative (--)
Notes:	
1) Exhaust, transfer air received from the adjoining locker room, outdoors.	

PLUMBING AND MEDICAL GASES

Cold Water:	Yes
Hot Water:	Yes
Laboratory Air:	--
Laboratory Vacuum:	--
Sanitary Drain:	Yes
Reagent Grade Water:	--
Medical Air:	--
Medical Vacuum:	--
Oxygen:	--
Notes:	--

Toilet & Shower Rooms (Soiled Area) (TLTS1)

Equipment List

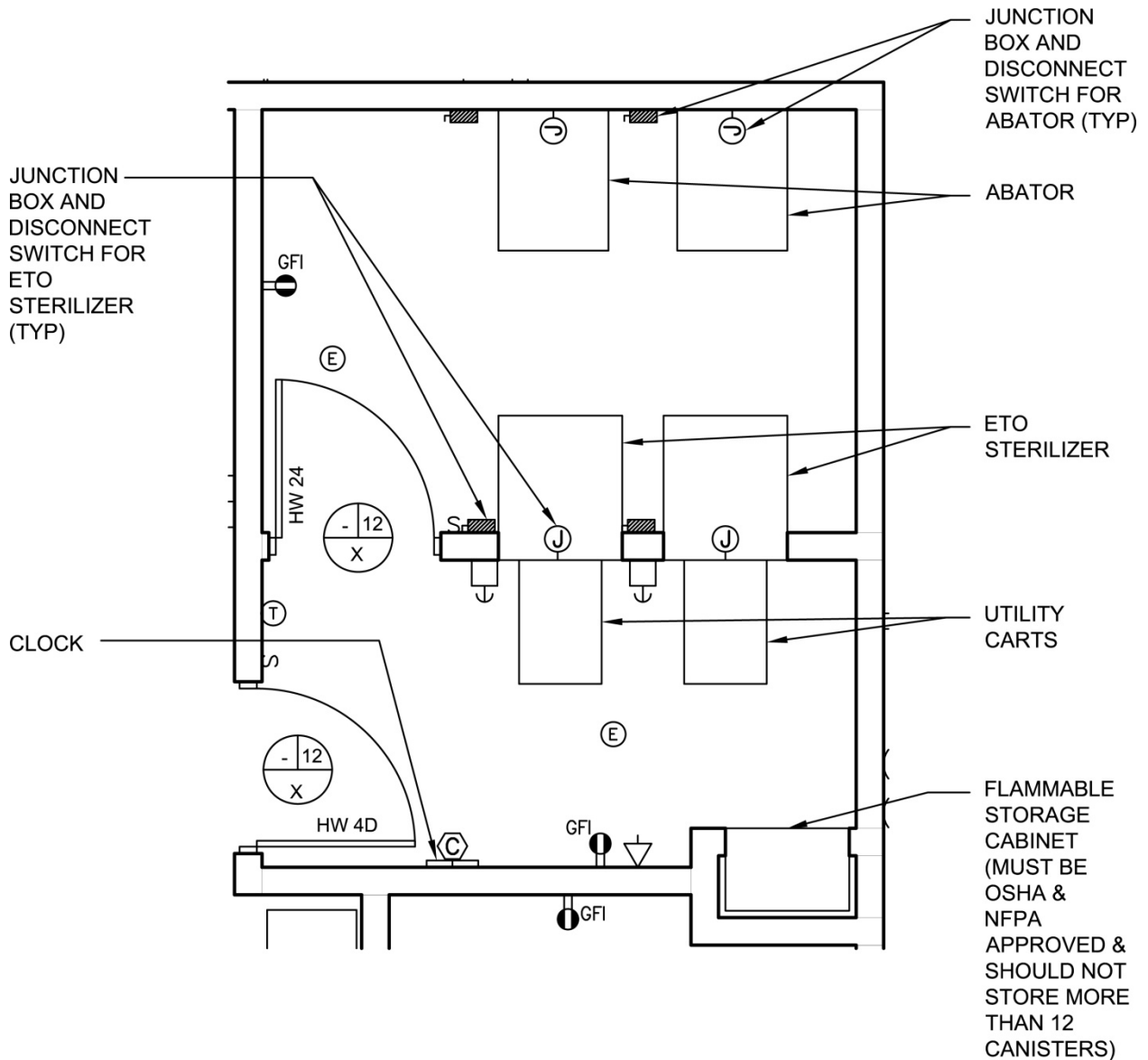
JSN	SYMBOL	QTY	AI	DESCRIPTION
A1066		AR	CC	<u>Mirror, Float Glass, with Stainless Steel Frame</u> A high quality 1/4" polished float glass mirror 36X18, framed in a one-piece, bright polished, stainless steel channel frame with 90° mitered corners. All edges of the mirror are protected by absorbing filler strips. Mirror has a galvanized steel back with integral horizontal hanging brackets and wall hanger for concealed mounting. For mounting above single wall mounted lavatories located in toilet areas, Doctors examination offices, etc. May also be used above double lavatories, either wall or countertop mounted, found in restroom areas.
A5075		AR	VV	<u>Dispenser, Soap, Disposable</u> Disposable soap dispenser. One-handed dispensing operation. Designed to accommodate disposable soap cartridge and valve.
A5080		AR	CC	<u>Dispenser, Paper Towel, Stainless Steel, Surface Mounted</u> A surface mounted, satin finish stainless steel, single-fold, paper towel dispenser. Dispenser features: tumbler lock; front hinged at bottom; and refill indicator slot. Minimum capacity 400 single-fold paper towels. For general purpose use throughout the facility.
A5109		AR	CC	<u>Grab Bar, 1-1/4" Diameter, Stainless Steel, 2 Wall, Wheelchair Accessible</u> A 1-1/4" diameter, satin finish stainless steel, peened gripping surface, 2 wall toilet stall/ room, grab bar with concealed mounting flanges. Snap over flanges are provided to conceal mounting screws. A selection of mounting kits and concealed anchor devices are available from the manufacturers for different types of installations. Grab bar shall comply with barrier-free accessibility guidelines for structural strength. For typical water closet applications in toilet stalls and rooms where ADA (American's With Disabilities Act) requirements must be met.
A5110		AR	CC	<u>Grab Bar, 1-1/4" Diameter, Stainless Steel, 2 Wall, Shower Use</u> A 1-1/4" diameter, satin finish stainless steel, peened gripping surface, 2 wall shower, grab bar with concealed mounting flanges. Snap over flanges are provided to conceal mounting screws. A selection of mounting kits and concealed anchor devices are available from the manufacturers for different types of installations. Grab bar shall comply with barrier-free accessibility guidelines for structural strength. For typical applications in shower stalls where ADA (American's With Disabilities Act) requirements must

				be met.
A5145		1	CC	<u>Hook, Garment, Double, Stainless Steel, Surface Mounted</u> A surface mounted, satin finish stainless steel, double garment hook. Equipped with a concealed mounting bracket that is secured to a concealed wall plate. For general purpose use throughout the facility to hang various items of apparel.
A5170		1	CC	<u>Rod, Shower Curtain, 1" Diameter, with Curtain & Hooks</u> A concealed mounted, 1" outside diameter, satin finish stainless steel, shower curtain rod with white vinyl shower curtain (72" H) and SS shower curtain hooks. Rod and curtain available in various widths. For general purpose use at shower stall or bathtub locations. Pricing based upon standard shower stall dimensions of 36" x 36" and a standard curtain height of 72".
A5205		1	CC	<u>Bar, Towel, 1" Diameter, Stainless Steel, Surface Mounted</u> A surface mounted, satin finish stainless steel, 1" diameter, towel bar. Support posts and flanges are one piece, chrome-plated, cast heavy brass with satin finish. Towel bar shall not rotate within support posts. Available in 18", 24" and 30" widths. For general purpose use in shower or bathtub rooms. Pricing based upon a suggested standard width of 18".
F2000		1	VV	<u>Basket, Wastepaper, Round, Metal</u> Round wastepaper basket, approximately 18" high X 16" diameter. This metal unit is used to collect and temporarily store small quantities of paper refuse in patient rooms, administrative areas and nursing stations.
P3000		1	CC	<u>Lavatory, Vitreous China, Straight Back</u> Wall mounted, vitreous china lavatory (approximate bowl size 7"x15"x10") with: straight-front apron, straight or contoured back; faucet holes on 4" centers; gooseneck spout; wrist blade handles; and grid strainer. It shall be suitable for use in clinics, offices, washrooms or patient care areas.
P5040		1	CC	<u>Shower, Single, Hand-Held</u> A complete, barrier-free, single hand-held, personal shower system. The shower system includes: pressure balanced mixing valve with high temperature limit stop; personal hand shower; shower hose; wall supply; and slide bar. For general purpose use throughout the facility in shower stalls.
		AR		Pre-fab shower enclosure.
		AR		Toilet, wall hung.
		AR	CC	Receptacle, electrical, duplex, 120 volt, ground fault interrupter (PG-18-1, MCS 26 27 26).
		1	CC	Occupancy sensor, dual technology, wall mounted. (PG-18-1, MCS 26 09 23)

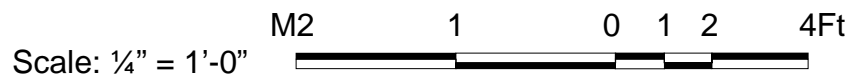
This page intentionally left blank.

EtO Sterilizer / Aerator Room (CSSS4 / CSSS5)

Floor Plan



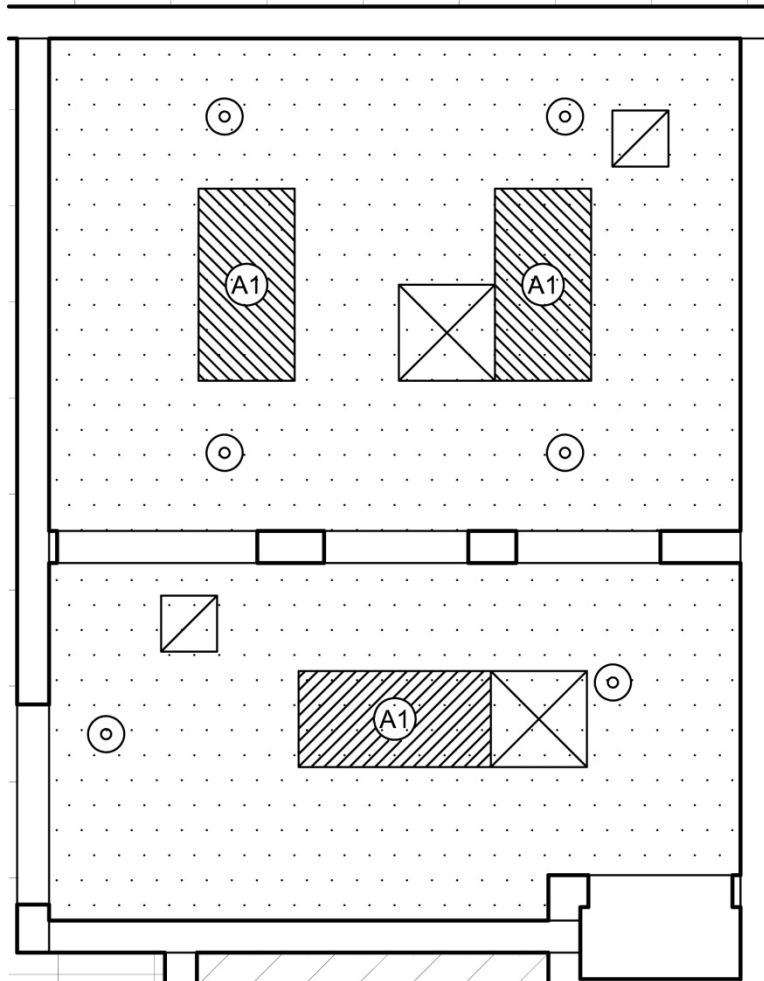
Aerator: 150 NSF / 13.9 NSM
 Sterilizer: 100 NSF / 9.3 NSM



NOTE: Guide plates are graphical representations of selected room types, illustrating the integration of space, components, systems, and equipment. They provide typical configurations and general technical guidance, and are not intended to be project specific. Specific infrastructure design requirements are contained in VA Design Manuals and Space Planning Criteria located in the VA Technical Information Library.

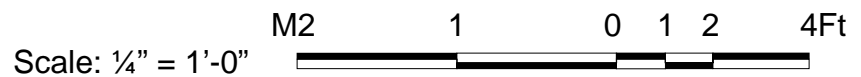
EtO Sterilizer / Aerator Room (CSSS4 / CSSS5)

Reflected Ceiling Plan



Aerator: 150 NSF / 13.9 NSM

Sterilizer: 100 NSF / 9.3 NSM



NOTE: Guide plates are graphical representations of selected room types, illustrating the integration of space, components, systems, and equipment. They provide typical configurations and general technical guidance, and are not intended to be project specific. Specific infrastructure design requirements are contained in VA Design Manuals and Space Planning Criteria located in the VA Technical Information Library.

EtO Sterilizer / Aerator Room (CSSS4 / CSSS5)

Design Standards

ARCHITECTURAL

Ceiling:	RES-W/GWB (SC)
Ceiling Height:	9'-0" (2700 mm)
Wall Finish:	RES-W/GWB(SC)/ Pre-Fab
Wainscot:	
Base:	RES
Floor Finish:	RES
Slab Depression:	--
Sound Protection:	--
Notes:	--

SPECIAL EQUIPMENT

	--
--	----

LIGHTING

General:	50 FC- 1.5 W/SF* (MIN)
Special:	30 FC- 1 W/SF**

Notes: *Lobby, ** Service Area

- 1) Fixture A1: 2'x4' (600 mm x 1200 mm) recessed, flange mounted fluorescent light fixture, UL listed for wet location, prismatic lens with gasketing, w/ F32T8 lamps 3500•K, CRI=70 (minimum).
- 2) The foot-candle level is average maintained.
- 3) Exact quantity, location, and lamping of light fixtures shall be chosen to meet the foot-candle requirement.

POWER

General:	As shown
Emergency:	All power and lighting

Notes:

- 1) Coordinate ETO sterilizer equipment power requirements with manufacturer.
- 2) ETO Sterilizers that have chambers above 10 cubic feet (.283 cubic meters) or utilize ethylene oxide containers above 200 grams, the sterilizer room and maintenance area shall conform to NFPA 560 and must incorporate the following:
 - a) All power and lighting shall be explosion proof in accordance with NFPA 70 for Class I, Division II, Group B areas.
 - b) All piping shall be bonded to earth ground.
 - c) All equipment shall be grounded in accordance with NFPA 70.

COMMUNICATION/SPECIAL SYSTEMS

Data:	--
Telephone:	Yes
Intercom:	--
Nurse Call:	--
Public Address:	--
Radio/Entertainment:	--
MATV:	--
CCTV:	--
MID:	--
Security/Duress:	--
VTEL:	--
VA Satellite TV:	--
Notes:	--

HEATING, VENTILATING AND AIR CONDITIONING

Indoor Design Conditions:	
Dry-Bulb Temperature:	73F – 75F (23C – 24C)
Relative Humidity:	30% - 55%
Minimum Total Air Changes per Hour:	10
Room Air Exhaust Required:	Yes, 100%
Special Exhaust or General Exhaust:	Special Exhaust
Room Air Return Permitted:	No
Room Air Balance:	Negative (-)
Notes:	--

PLUMBING AND MEDICAL GASES

Cold Water:	Yes. See Note 1)
Hot Water:	--
Laboratory Air:	--
Laboratory Vacuum:	--
Sanitary Drain:	Yes. See Note 1)
Reagent Grade Water:	--
Medical Air:	--
Medical Vacuum:	--
Oxygen:	--
Other:	Compressed Air. See Note 1)

Notes:

- 1) Provide as needed per sterilizer equipment requirements.

EtO Sterilizer / Aerator Room (CSSS4 / CSSS5)

Equipment List

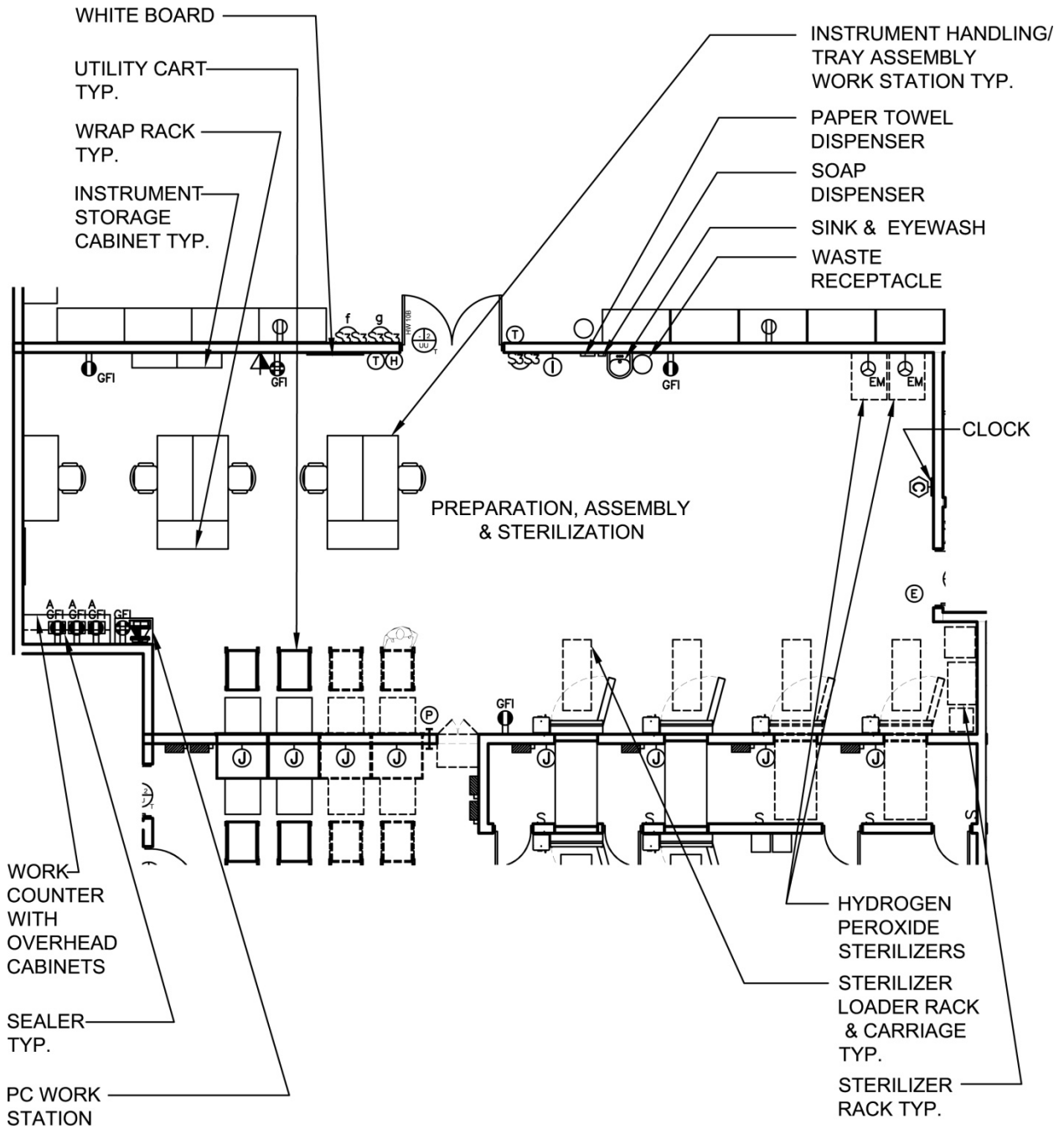
JSN	SYMBOL	QTY	AI	DESCRIPTION
A1010		1	CC	<u>Telecommunication Outlet (PG-18-1, MCS 27 31 00)</u> Telecommunication outlet location.
F3200		1	VV	<u>Clock, Battery, 12" Diameter</u> Clock, 12" diameter. Round surface, easy to read numbers with sweep second hand. Wall mounted unit for use when impractical to install a fully synchronized clock system. Battery operated, (batteries not included).
M2020		1	CC	<u>Cabinet, Storage, Safety, Built In, Vented</u> Safety storage cabinet. This unit is of double steel wall construction, with vented grounding attachment, raised leak proof door sill, and adjustable shelving. Equipped with two doors and three-point key lock. The construction meets standards set by OSHA and NFPA Code 30 requirements. Designed for storage of flammable type liquids. The cabinet fits into a laboratory casework configuration and its ventilation ports are in the back to leave the counterspace free. The cabinet requires ventilation ducting and an exhaust fan as part of the HVAC (heating, ventilation and air conditioning) system.
S0290		1	CC	<u>Rack, 2 Shelves, 20x20x38 Chamber</u> Rack with two extendable shelves for use with sterilizers having a 20X20X38 chamber. For use in providing loading efficiency for a wide variety of mixed or single item loads.
S0395		1	CC	<u>Loading Car & Transfer Carriage, Large Chamber</u> Loading car and transfer carriage for use with sterilizers having a 24"W x 36"H x36"D chamber. Loading car is a welded, CRS framework with two full-length adjustable shelves of CRS welded sheet metal and wire. Transfer carriage is constructed of a welded CRS or painted for corrosion protection frame and provided two fixed and two swivel casters. Loading car is secured to the transfer carriage by a locking mechanism. For loading and unloading 24x36x36 sterilizers and for transferring goods to and from processing areas.
S0595		AR	CC	<u>Loading Car & Transfer Carriage, 24x36x60 Chamber</u> Loading car and transfer carriage for use with sterilizers having a 24x36x60 chamber. Loading car is a welded, CRS framework with two full-length adjustable shelves of CRS welded sheet metal and wire. Transfer carriage is constructed of a welded CRS or painted for corrosion protection frame and provided two fixed and two swivel casters. Loading car is secured to the transfer carriage by a locking

				mechanism. For loading and unloading 24x36x60 sterilizers and for transferring goods to and from processing areas.
S9610		2	CC	<u>Station, Utility/Rack</u> Rack / utility station. The station consists of a stainless steel countertop, 4-1/2" apron, legs and necessary cross-member supports. The stations are specially designed to handle loading racks or trays for use with a specific manufacturer's related equipment and accessories but may also serve a variety of general uses, such as an accumulating, sorting, inspecting, or processing station. Various station widths/lengths (25" to 126", depending upon manufacturer) are available. Pricing based on 48' width/length. Not needed; include if space allows.
U0012		2	CC	<u>Sterilizer, Ethylene Oxide</u> A floor mounted, low temperature hydrogen peroxide gas plasma sterilizer. Sterilization chamber shall have a capacity of approximately 3.5 cubic feet (100 liters). The sterilizer shall be capable of processing metal instruments, plastics, heat and moisture sensitive devices in approximately 75 minutes with no aeration required. Unit shall be equipped with a visual display and audible alarm. A built in printer will provide system performance record for each cycle.
		2		<u>Ethylene Oxide Abator</u> Abatement system for the prevention of Ethylene Oxide discharge into the atmosphere. Unit shall be catalytic converter. Dimensions H 41 x W 32 x D 41.
		AR		Carts to support items being loaded and unloaded from sterilizers.
		AR		Flammable Storage cabinet for storing EtO canisters.
		1	CC	Receptacle, electrical, duplex, ground fault interrupter, 120 volt (PG-18-1, MCS 26 27 26).
		AR	CC	Disconnect Switch (PG-18-1, MCS 26 29 21).
		AR	CC	Junction Box (PG-18-1, MCS 26 05 33).
		AR	CC	Emergency Power Off Switch.

This page intentionally left blank.

Preparation, Assembly & Sterilization Area (CSIA3)

Floor Plan



NSF (NSM) per Space Criteria

M2 1 0 2'-8" 5'-4" 10'-8"Ft

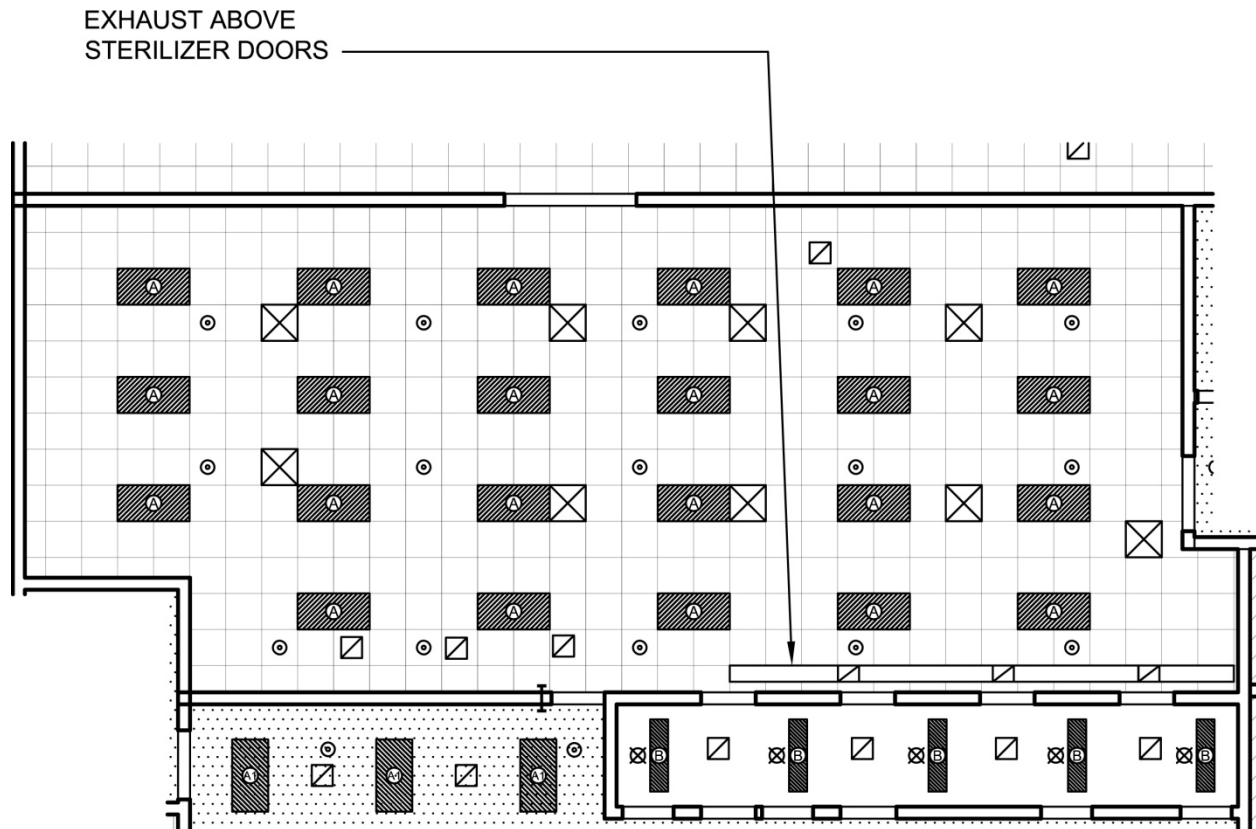
Scale: 3/32" = 1'-0"



NOTE: Guide plates are graphical representations of selected room types, illustrating the integration of space, components, systems, and equipment. They provide typical configurations and general technical guidance, and are not intended to be project specific. Specific infrastructure design requirements are contained in VA Design Manuals and Space Planning Criteria located in the VA Technical Information Library.

Preparation, Assembly & Sterilization Area (CSIA3)

Reflected Ceiling Plan



NSF (NSM) per Space Criteria

M2 1 0 2'-8" 5'-4" 10'-8" Ft

Scale: 3/32" = 1'-0"



NOTE: Guide plates are graphical representations of selected room types, illustrating the integration of space, components, systems, and equipment. They provide typical configurations and general technical guidance, and are not intended to be project specific. Specific infrastructure design requirements are contained in VA Design Manuals and Space Planning Criteria located in the VA Technical Information Library.

Preparation, Assembly & Sterilization Area (CSIA3)

Design Standards

ARCHITECTURAL

Ceiling:	RES-W/GWB (SC)
Ceiling Height:	9'-0" (2700 mm)
Wall Finish:	RES-W/GWB (SC)
Wainscot:	--
Base:	RES
Floor Finish:	RES3
Slab Depression:	--
Sound Protection:	--
Notes:	--

SPECIAL EQUIPMENT

Wall Protection	--
-----------------	----

LIGHTING

General:	50 FC- 1.5 W/SF
Special:	--
Notes:	

- 1) Fixture A: 2'x4' (600 mm x 1200 mm) recessed, grid mounted fluorescent light fixture, UL listed for wet location, prismatic lens with gasketing, w/ F32T8 lamps 3500•K, CRI=70 (minimum).
- 2) The foot-candle level is average maintained.
- 3) Provide ballasts per fixture for desired switching configuration. To provide a uniform lighting level, switch inner lamp(s) on first switch and outer lamps on second switch.
- 4) Exact quantity, location, and lamping of light fixtures shall be chosen to meet the foot-candle requirement.

POWER

General:	As Shown
Emergency:	As Shown
Notes:	--

COMMUNICATION/SPECIAL SYSTEMS

Data:	Yes
Telephone:	Yes
Intercom:	Yes
Nurse Call:	--
Public Address:	--
Radio/Entertainment:	--
MATV:	--
CCTV:	--
MID:	--
Security/Duress:	--
VTEL:	--
VA Satellite TV:	--
Notes:	--

HEATING, VENTILATING AND AIR CONDITIONING

Indoor Design Conditions:	
Dry-Bulb Temperature:	73F (23C)
Relative Humidity:	30% - 55%
Minimum Total Air Changes per Hour:	10
Room Air Exhaust Required:	Yes, 100%
Special Exhaust or General Exhaust:	General Exhaust
Room Air Return Permitted:	No
Room Air Balance:	Double Positive (++)
Notes:	--

PLUMBING AND MEDICAL GASES

Cold Water:	Yes
Hot Water:	Yes
Laboratory Air:	--
Laboratory Vacuum:	--
Sanitary Drain:	Yes
Reagent Grade Water:	--
Medical Air:	--
Medical Vacuum:	--
Oxygen:	--
Notes:	--

Preparation, Assembly & Sterilization Area (CSIA3)

Equipment List

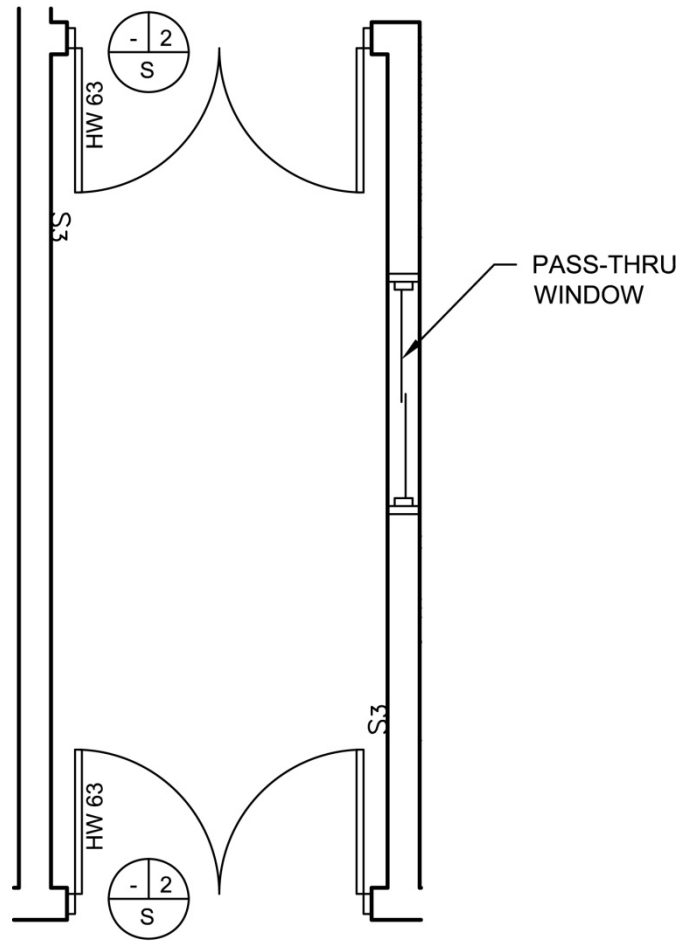
JSN	SYMBOL	QTY	AI	DESCRIPTION
A1010		1	CC	<u>Telephone/Data Combination Outlet (PG-18-1, MCS 27 31 00)</u> Telephone/data outlet location.
C0037		AR	CC	<u>Rail, Apron, 4x36x1</u> Apron rail. Also referred to as an apron front, apron panel, or knee space rail. Used to close in front knee space area and/or provide work surface support between two base cabinets or a base cabinet and wall. Apron rails should be ordered in pairs to provide both front and rear work surface support.
CE050		AR	CC	<u>Cabinet, Tall, Sloping Top, Stainless Steel</u> Tall cabinet with framed-glass hinged doors and sloping top. Also referred to as a framed-glass hinged double door wall case. Must be stainless steel and include enclosed pegs to hang ring instruments.
CT030		AR	CC	<u>Countertop, Stainless Steel</u>
E0945		1	VV	<u>Cart, Computer, Mobile, 36"H x 32"W x 22"D</u> THIS TYPICALLY INCLUDES: 1 Cart Body, Style-A Narrow, with Raised Edge Top 1 Flip-Up Shelf 1 Sharps Container Holder 1 Wastebasket and Holder 1 Chart Holder 2 Drawers, 3"H (76mm) 2 Drawers, 6"H (152mm) Drawer Organizer Bins
F0230		3	VV	<u>Chair, Drafting, Rotary - No Cloth</u> Drafting chair approximately 47" high X 20" wide X 20" deep with rotary stool and a 5 (five) star base with casters. Padded seat and back. Foot ring adjusts with chair. No cloth permitted.
F3200		1	VV	<u>Clock, Battery, 12" Diameter</u> Clock, 12" diameter. Round surface, easy to read numbers with sweep second hand. Wall mounted unit for use when impractical to install a fully synchronized clock system. Battery operated, (batteries not included).
M1801		1	VV	<u>Computer, Microprocessing, with Flat Panel Monitor</u> Desk top microprocessing computer. The unit shall consist of a central processing mini tower, flat panel monitor, keyboard, mouse and speakers. The computer is used throughout the facility to input, manipulate and retrieve information.
M2700		3	VV	<u>Sealer, Heat, Plastic Bag, with Motor, Portable</u> Portable plastic bag heat sealing machine. Heavy duty portable sealer, motor driven with foot switch, 16 inches long clamping jaw minimum, 1/8 inch (2mm) wide heat seal, grounding plug and 3-wire electrical

				cable. Equipped with low voltage impulse generator with electronic timer. For making air and water-tight seals on plastic bags.
S0290		1	CC	<u>Rack, 2SH, 20x20x38 Chamber</u> Rack with two extendable shelves for use with sterilizers having a 20X20X38 chamber. For use in providing loading efficiency for a wide variety of mixed or single item loads.
S0395		1	CC	<u>Loading Car & Transfer Carriage, Large Chamber</u> Loading car and transfer carriage for use with sterilizers having a 24"W x 36"H x36"D chamber. Loading car is a welded, CRS framework with two full-length adjustable shelves of CRS welded sheet metal and wire. Transfer carriage is constructed of a welded CRS or painted for corrosion protection frame and provided two fixed and two swivel casters. Loading car is secured to the transfer carriage by a locking mechanism. For loading and unloading 24x36x36 sterilizers and for transferring goods to and from processing areas.
		2		<u>Sterilizer, Steam, Bulk, Prevacuum, Double Door</u> Floor mounted, through the wall, double door, prevacuum, steam sterilizer for the sterilization of medical instrumentation. May have integrated steam generator or hospital provided steam source. Unit shall be capable of providing variable vacuum and gravity sterilization cycles. Unit shall be equipped with visual display, pressure sensitive keypad, audible alarms, and integrated impact printer which provides a record of system performance for each cycle. Installation requirement dimensions H80xW112xD124.
S5500		2	CC	<u>Sterilizer, Hydrogen Peroxide Gas</u> A floor mounted, low temperature hydrogen peroxide gas plasma sterilizer. The sterilizer shall be capable of processing metal instruments, plastics, heat and moisture sensitive devices in approximately 75 minutes with no aeration required. Unit shall be equipped with a visual display and audible alarm. Unit shall have an integrated printer to provide a record of system performance for each cycle. Installation Dimensions H 89 x W 115 x D 84.
S9610		2	CC	<u>Station, Utility/Rack</u> Rack / utility station. The station consists of a stainless steel countertop, 4-1/2" apron, legs and necessary cross-member supports. The stations are specially designed to handle loading racks or trays for use with a specific manufacturer's related equipment and accessories but may also serve a variety of general uses, such as an accumulating, sorting, inspecting, or processing station. Various station widths/lengths (25" to 126", depending upon manufacturer) are available. Pricing based on 48' width/length.

S9770		1	CC	<u>Cart, Loading, Sterilizable</u> All purpose sterilizable loading/supply cart with fixed bottom shelf, two full-length adjustable shelves, and two adjustable retaining rods. The cart is specially constructed to resist the corrosive action of high temperature steam and gas sterilization. For use with cart loading sterilizers and washers to process, transport and store goods. Cart is available in a minimum of two sizes. Dimensions and pricing based on a cart for a chamber size of 26X62X76.
		AR		Multiple work tables for instrument handling/tray assembly and packaging.
		AR		Same quantity of stools as workstations above.
		AR		Hardware for electronic instrument tracking.
		AR		Equipment for drying instruments and equipment that require EtO sterilization.
		AR		Appropriate lighting and magnification for instrument inspection.
		AR		Surfaces to support racks that are ejected from washer/disinfectors.
		AR		Storage for clean linen.
		AR		Water-saver technology for sterilizers above.
		AR		Multiple utility and storage carts.
		AR		Printers for tray lists, barcode labels, preference cards
		AR		Hamper(s).
		3		Equipment for incubation of biological testing.
		AR		Equipment for sharps disposal.
		AR		Storage for sterilization wrap.
		AR		Waste cans.
		AR		Boards for staff communication.
		AR		Equipment to recharge batteries.
		AR		Change cart to ergonomic, general-use computer workstation cart.
		AR		Add one (1) computer per tech workstation for instrument tracking, tray assembly, etc.
		AR		White boards for staff communication.
		1	CC	Receptacle, electrical, quadruplex, ground fault interrupter, for computer equipment items (PG-18-1, MCS 26 27 26).
		AR	CC	Receptacle, electrical, duplex, 120 volt, ground fault interrupter (PG-18-1, MCS 26 27 26).
		1	CC	Intercom outlet (PG-18-1, MCS 27 51 33).
		AR	CC	Disconnect Switch (PG-18-1, MCS 26 29 21).
		AR	CC	Junction Box (PG-18-1, MCS 26 05 33).
		AR	CC	Receptacle, electrical, special purpose (PG-18-1, MCS 26 27 26).

Ante-Room (Dispatch Area) (CSCQ2)

Floor Plan



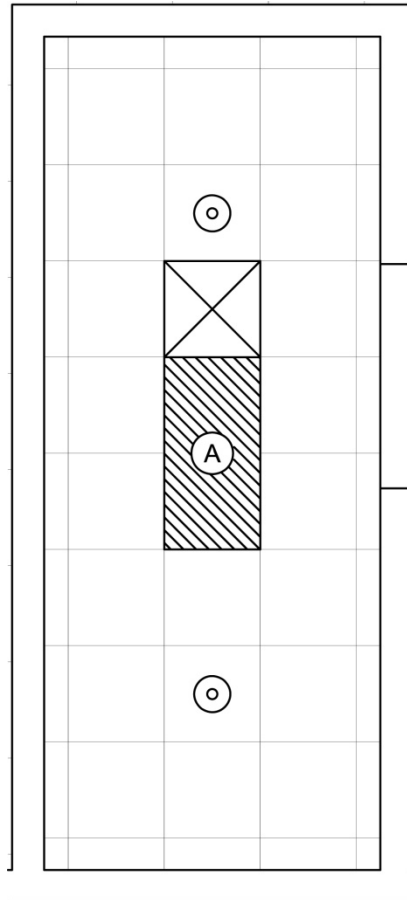
120 NSF / 11.1 NSM



NOTE: Guide plates are graphical representations of selected room types, illustrating the integration of space, components, systems, and equipment. They provide typical configurations and general technical guidance, and are not intended to be project specific. Specific infrastructure design requirements are contained in VA Design Manuals and Space Planning Criteria located in the VA Technical Information Library.

Ante-Room (Dispatch Area) (CSCQ2)

Reflected Ceiling Plan



120 NSF / 11.1 NSM

Scale: 1/4" = 1'-0" M2 1 0 1 2 4Ft

NOTE: Guide plates are graphical representations of selected room types, illustrating the integration of space, components, systems, and equipment. They provide typical configurations and general technical guidance, and are not intended to be project specific. Specific infrastructure design requirements are contained in VA Design Manuals and Space Planning Criteria located in the VA Technical Information Library.

Ante-Room (Dispatch Area) (CSCQ2)**Design Standards****ARCHITECTURAL**

Ceiling:	AT (SP)
Ceiling Height:	9'-0" (2700 mm)
Wall Finish:	GWB (SC)
Wainscot:	--
Base:	RB
Floor Finish:	VCT
Slab Depression:	--
Sound Protection:	--
Notes:	--

SPECIAL EQUIPMENT

	--
--	----

LIGHTING

General:	30 FC – 1W/SF (MIN)
Special:	As Shown
Notes:	

- 1) Fixture A: 2'x4' (600 mm x 1200 mm) recessed, grid mounted fluorescent light fixture, UL listed for wet location, prismatic lens with gasketing, w/ F32T8 lamps 3500•K, CRI=70 (minimum).
- 2) The foot-candle level is average maintained.
- 3) Exact quantity, location, and lamping of light fixtures shall be chosen to meet the foot-candle requirement.

POWER

General:	As Shown
Emergency:	Egress lighting
Notes:	--

COMMUNICATION/SPECIAL SYSTEMS

Data:	--
Telephone:	Yes
Intercom:	Yes
Nurse Call:	--
Public Address:	--
Radio/Entertainment:	--
MATV:	--
CCTV:	--
MID:	--
Security/Duress:	--
VTEL:	--
VA Satellite TV:	--
Notes:	--

HEATING, VENTILATING AND AIR CONDITIONING

Inside Design Conditions:	None
Minimum Total Air Changes per Hour:	10
Room Air Exhaust Required:	No
Special Exhaust or General Exhaust:	None
Room Air Return Permitted:	No
Room Air Balance:	Positive (+)
Notes:	--

PLUMBING AND MEDICAL GASES

Cold Water:	--
Hot Water:	--
Laboratory Air:	--
Laboratory Vacuum:	--
Sanitary Drain:	--
Reagent Grade Water:	--
Medical Air:	--
Medical Vacuum:	--
Oxygen:	--
Notes:	--

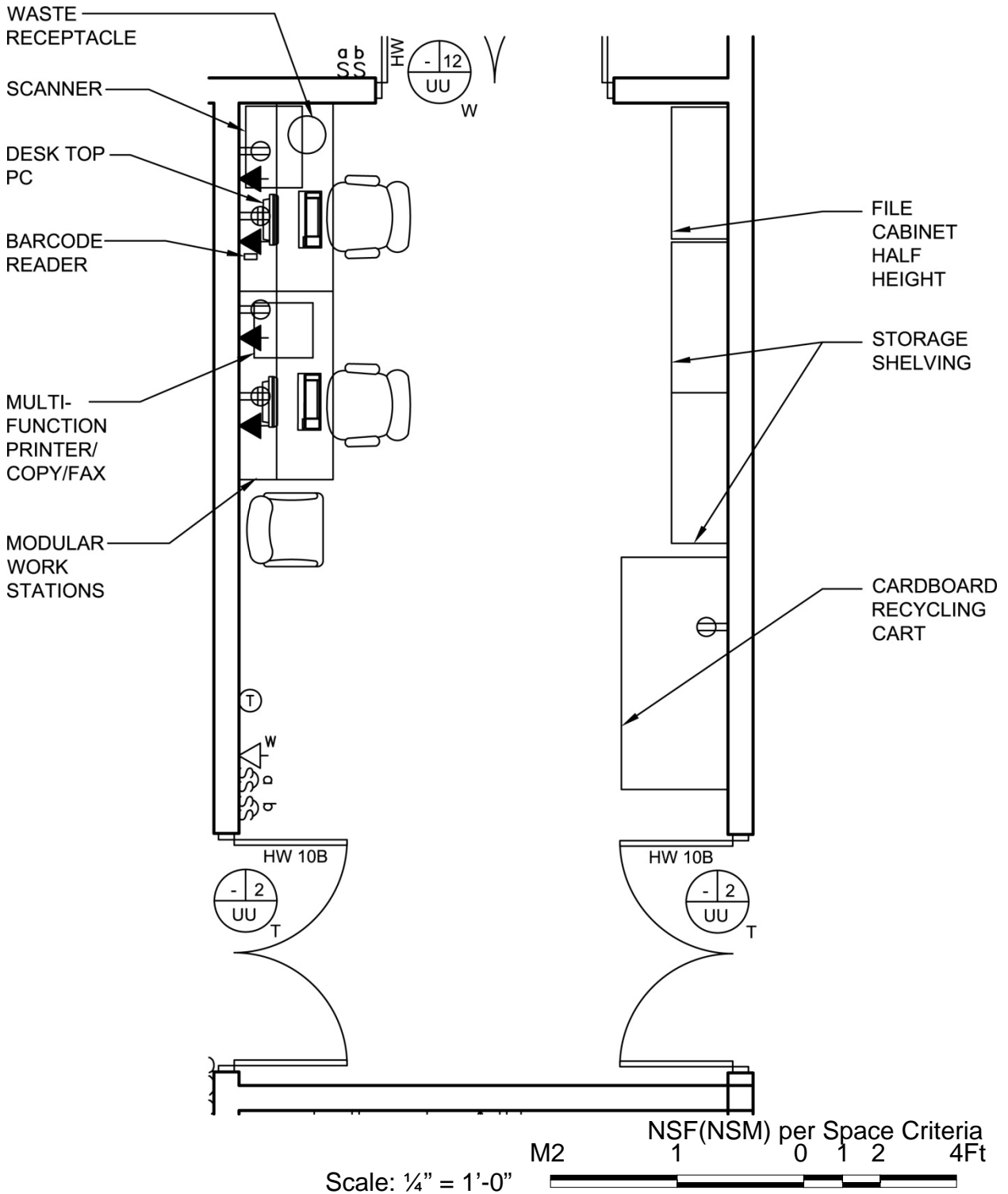
Ante-Room (Dispatch Area) (CSCQ2)

Equipment List

JSN	SYMBOL	QTY	AI	DESCRIPTION

Clean Receiving and Breakout Area (CSIA2)

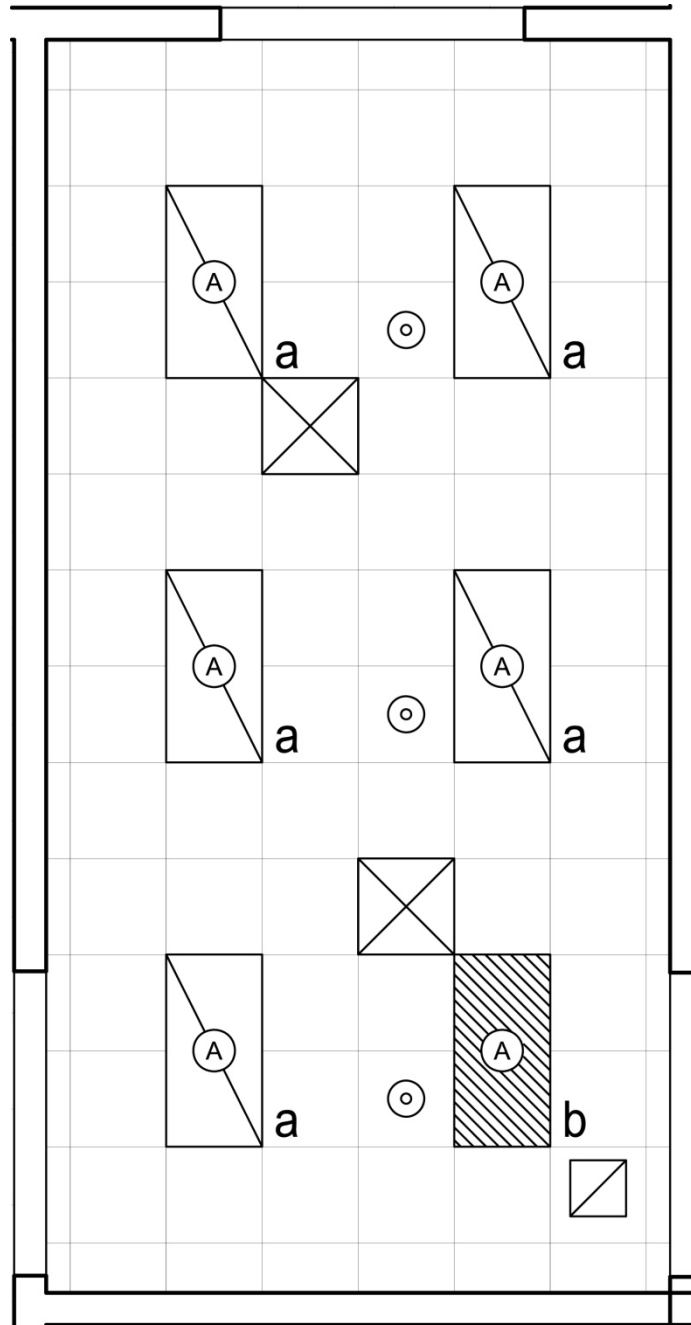
Floor Plan



NOTE: Guide plates are graphical representations of selected room types, illustrating the integration of space, components, systems, and equipment. They provide typical configurations and general technical guidance, and are not intended to be project specific. Specific infrastructure design requirements are contained in VA Design Manuals and Space Planning Criteria located in the VA Technical Information Library.

Clean Receiving and Breakout Area (CSIA2)

Reflected Ceiling Plan



Scale: 1/4" = 1'-0" M2 NSF(NSM) per Space Criteria
1 0 1 2 4Ft

NOTE: Guide plates are graphical representations of selected room types, illustrating the integration of space, components, systems, and equipment. They provide typical configurations and general technical guidance, and are not intended to be project specific. Specific infrastructure design requirements are contained in VA Design Manuals and Space Planning Criteria located in the VA Technical Information Library.

Clean Receiving and Breakout Area (CSIA2)

Design Standards

ARCHITECTURAL

Ceiling:	AT (SP)
Ceiling Height:	9'-0" (2700 mm)
Wall Finish:	GWB (SC)
Wainscot:	--
Base:	RB
Floor Finish:	VCT
Slab Depression:	--
Sound Protection:	--
Notes:	--

SPECIAL EQUIPMENT

Wall Protection	--
-----------------	----

LIGHTING

General:	70 FC – 1.5 W/SF (MIN)
Special:	As Shown
Notes:	

- 1) Fixture A: 2'x4' (600 mm x 1200 mm) recessed, grid mounted fluorescent light fixture, UL listed for wet location, prismatic lens with gasketing, w/ F32T8 lamps 3500•K, CRI=70 (minimum).
- 2) The foot-candle level is average maintained.
- 3) Provide ballasts per fixture for desired switching configuration. To provide a uniform lighting level, switch inner lamp(s) on first switch and outer lamps on second switch.
- 4) Exact quantity, location, and lamping of light fixtures shall be chosen to meet the foot-candle requirement.

POWER

General:	As Shown
Emergency:	As Shown
Notes:	--

COMMUNICATION/SPECIAL SYSTEMS

Data:	Yes
Telephone:	Yes
Intercom:	--
Nurse Call:	--
Public Address:	--
Radio/Entertainment:	--
MATV:	--
CCTV:	--
MID:	--
Security/Duress:	--
VTEL:	--
VA Satellite TV:	--
Notes:	--

HEATING, VENTILATING AND AIR CONDITIONING

Inside Design Conditions:	
Dry-Bulb Temperature:	75F (24C)
Relative Humidity:	30% - 55%
Minimum Total Air Changes per Hour:	6
Room Air Exhaust Required:	Yes, 100%
Special Exhaust or General Exhaust:	General Exhaust
Room Air Return Permitted:	No
Room Air Balance:	Positive (+)
Notes:	

PLUMBING AND MEDICAL GASES

Cold Water:	--
Hot Water:	--
Laboratory Air:	--
Laboratory Vacuum:	--
Sanitary Drain:	--
Reagent Grade Water:	--
Medical Air:	--
Medical Vacuum:	--
Oxygen:	--
Notes:	--

Clean Receiving and Breakout Area (CSIA2)

Equipment List

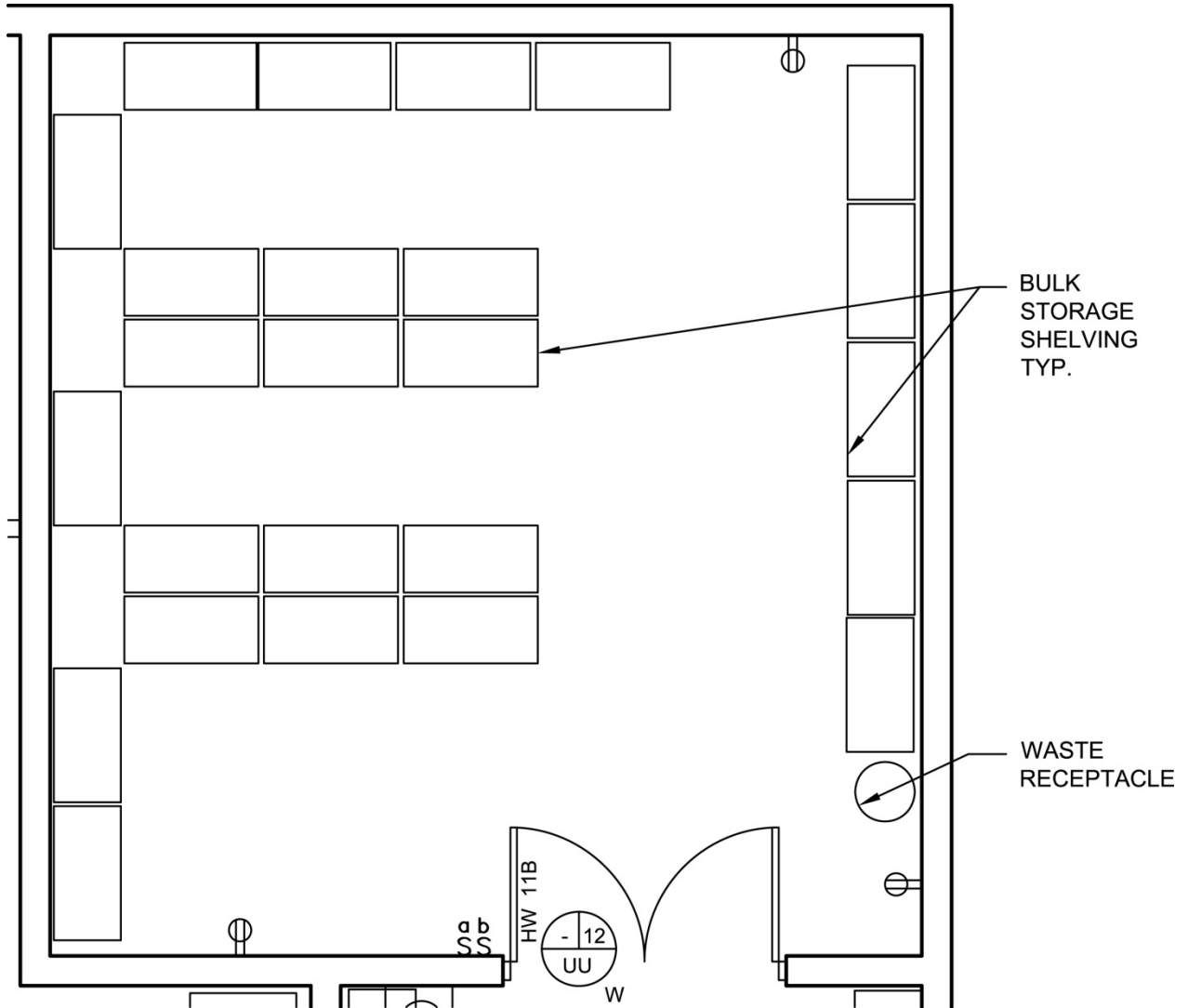
JSN	SYMBOL	QTY	AI	DESCRIPTION
A1010		1	CC	<u>Telecommunication Outlet (PG-18-1, MCS 27 31 00)</u> Telecommunication outlet location.
A1014		1	CC	<u>Telephone, Wall Mounted, 1 Line, with Speaker</u> Telephone, wall mounted, 1 line, with speaker.
A6105		1	CC	<u>Counter, Reception Control, Built In</u> Counter, control, inpatient, built-in. Consists of two 18" wide base cabinets with two drawers and file drawer, two 30" wide pencil drawers and two 18" wide base cabinet with four drawers. The countertop shall be a composition of metal having a hard smooth surface finish, standard thickness of 1" and a 4" butt backsplash/curb. Pricing based on a 30" depth. Must be stainless steel, or use E0078 (see below).
E0078		1	VV	<u>Workstation, Modular</u> Refer to plan for layout.
F0205		1	VV	<u>Chair, Side with Arms</u> Upholstered side chair, 32" high X 21" wide X 23" deep with arms, padded seats and padded backs. Seat height is a minimum of 17". Available with or without sled base. No cloth permitted.
F0275		1	VV	<u>Chair, Swivel, High Back</u> Highback contemporary swivel chair, 41" high X 23" wide X 23" deep with five (5) caster swivel base and arms. Chair may be used at desks or in conference rooms. Back and seat are foam padded and upholstered with vinyl.
F0420		1	VV	<u>Cabinet, Filing, Lateral, Half Height</u> Half height two (2) or three (3) drawer lateral filing cabinet, 28" high X 42" wide X 18" deep with recessed handles, locking device and drawer label holders. Drawers are adaptable to either letter or legal size materials.
F0530		1	VV	<u>Cart, Trash</u> Heavy duty trash cart, 42" high X 74" wide X 34" deep with two (2) solid non-marking rubber roller bearing wheels, two (2) swivel casters, 2000 pound capacity and tilt mechanism.
F0775		1	VV	<u>Table, Work, 2 Drawer</u> Work table approximately 32" high X 72" wide X 30" deep with two drawers and a hard wood top. Must be metal.
F2700		1	VV	<u>Reader, Bar Code, Hand Held, with Interface</u> Hand held laser bar code reader with computer interface. Used for automated inventory, using bar code stickers / labels. Convenience outlet required at point of use.
M1801		1	VV	<u>Computer, Microprocessing, with Flat Panel Monitor</u> Desk top microprocessing computer. The unit shall

				consist of a central processing mini tower, flat panel monitor, keyboard, mouse and speakers. The computer is used throughout the facility to input, manipulate and retrieve information.
M1840		1	VV	<u>Printer/Copier/Fax Combination</u> Multifunctional printer, fax, scanner and copier (PFC) all-in-one machine.
M2055		1	VV	<u>Shelving, Storage, Wire, with Adjustable Shelves</u> Stationary, wire, shelving unit. Unit has fully adjustable shelves constructed of stainless steel. For use in general purpose storage areas. Shelving is provided in various sizes and configurations. Price provided is for a unit approximately 74"H x 18"D x 48"W with four shelves.
M7780		1	VV	<u>Scanner, Document</u> Scanner for recording printed material in an electronic format. Some models process both color and black-and-white images. Options include automatic paper feeders and transparency adapters. Most models require connection to a microcomputer for independent operation or use as part of a network. Larger models for high use applications which connect directly to a network without passing information through a microcomputer are available.
		AR		Container for recycling cardboard.
		AR	CC	Receptacle, electrical, quadruplex, for computer equipment items (PG-18-1, MCS 26 27 26).
		AR	CC	Receptacle, electrical, duplex, 120 volt (PG-18-1, MCS 26 27 26).
		AR	CC	Computer Data outlet (PG-18-1, MCS 27 31 00).

This page intentionally left blank.

Bulk Storage Area (SRS01)

Floor Plan



NSF (NSM) per Space Criteria

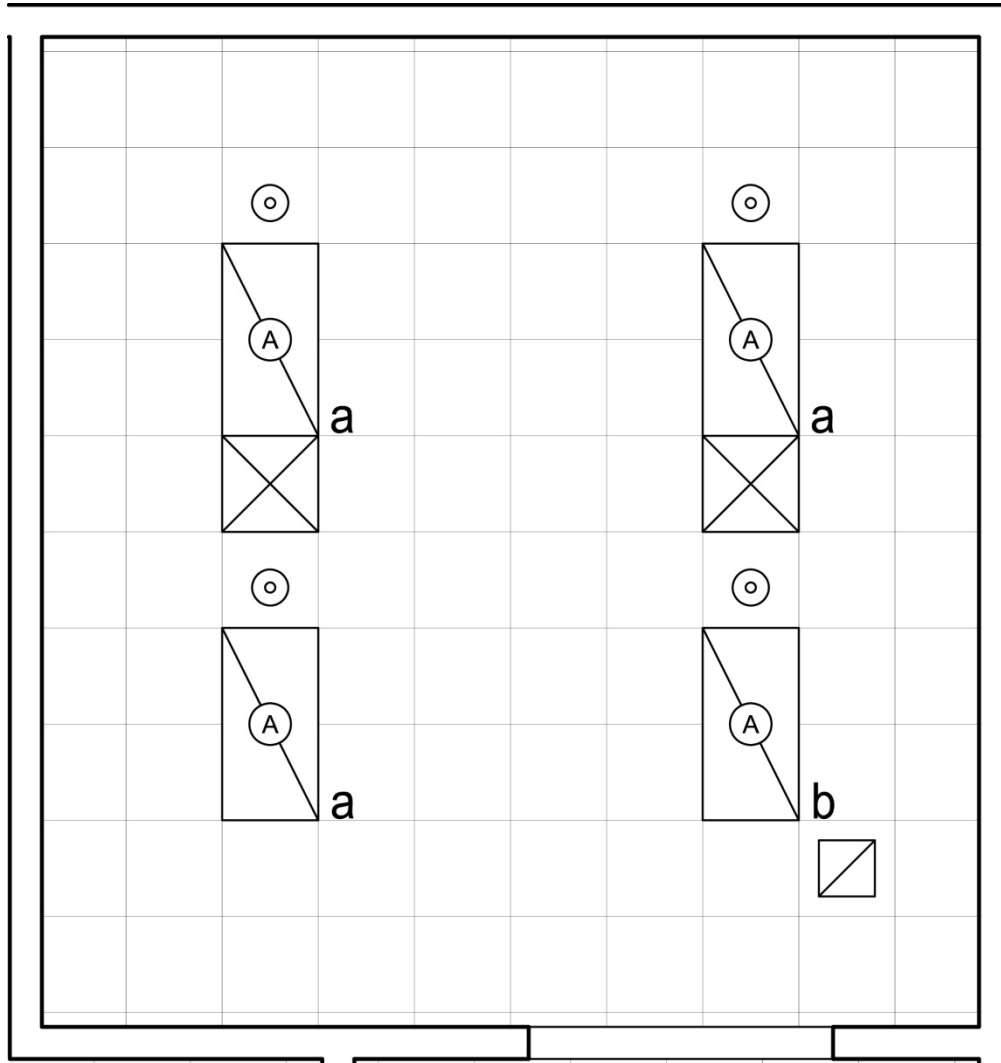
M2 1 0 1 2 4Ft

Scale: 1/4" = 1'-0"

NOTE: Guide plates are graphical representations of selected room types, illustrating the integration of space, components, systems, and equipment. They provide typical configurations and general technical guidance, and are not intended to be project specific. Specific infrastructure design requirements are contained in VA Design Manuals and Space Planning Criteria located in the VA Technical Information Library.

Bulk Storage Area (SRS01)

Reflected Ceiling Plan



NSF (NSM) per Space Criteria

M2 1 0 1 2 4Ft

Scale: 1/4" = 1'-0"

NOTE: Guide plates are graphical representations of selected room types, illustrating the integration of space, components, systems, and equipment. They provide typical configurations and general technical guidance, and are not intended to be project specific. Specific infrastructure design requirements are contained in VA Design Manuals and Space Planning Criteria located in the VA Technical Information Library.

Bulk Storage Area (SRS01)

Design Standards

ARCHITECTURAL

Ceiling:	AT (SP)
Ceiling Height:	9'-0" (2700 mm)
Wall Finish:	GWB (SC)
Wainscot:	--
Base:	RB
Floor Finish:	VCT
Slab Depression:	--
Sound Protection:	--
Notes:	--

SPECIAL EQUIPMENT

Wall Protection	--
-----------------	----

LIGHTING

General:	20 FC – 1 W/SF (MIN)
Special:	As Shown
Notes:	

- 1) Fixture A: 2'x4' (600 mm x 1200 mm) recessed, grid mounted fluorescent light fixture, UL listed for wet location, prismatic lens with gasketing, w/ F32T8 lamps 3500•K, CRI=70 (minimum).
- 2) The foot-candle level is average maintained.
- 3) Provide ballasts per fixture for desired switching configuration. To provide a uniform lighting level, switch inner lamp(s) on first switch and outer lamps on second switch.
- 4) Exact quantity, location, and lamping of light fixtures shall be chosen to meet the foot-candle requirement.

POWER

General:	As Shown
Emergency:	Egress lighting
Notes:	--

COMMUNICATION/SPECIAL SYSTEMS

Data:	--
Telephone:	--
Intercom:	--
Nurse Call:	--
Public Address:	--
Radio/Entertainment:	--
MATV:	--
CCTV:	--
MID:	--
Security/Duress:	--
VTEL:	--
VA Satellite TV:	--
Notes:	--

HEATING, VENTILATING AND AIR CONDITIONING

Inside Design Conditions:	
Dry-Bulb Temperature:	73F (23C)
Relative Humidity:	30% - 55%
Minimum Total Air Changes per Hour:	4
Room Air Exhaust Required:	Yes, 100%
Special Exhaust or General Exhaust:	General Exhaust
Room Air Return Permitted:	No
Room Air Balance:	Neutral (0)
Notes:	--

PLUMBING AND MEDICAL GASES

Cold Water:	--
Hot Water:	--
Laboratory Air:	--
Laboratory Vacuum:	--
Sanitary Drain:	--
Reagent Grade Water:	--
Medical Air:	--
Medical Vacuum:	--
Oxygen:	--
Notes:	--

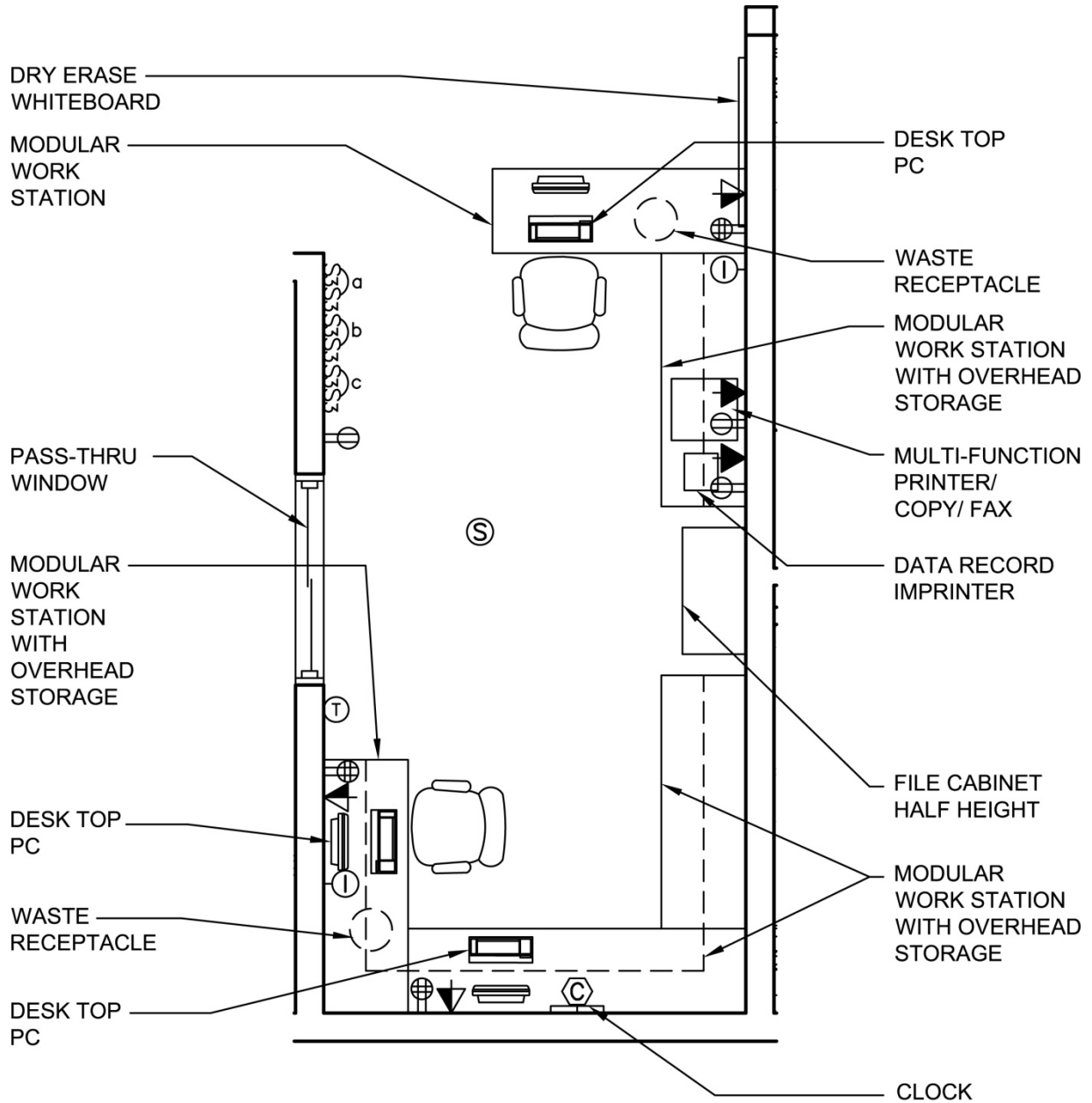
Bulk Storage Area (SRS01)

Equipment List

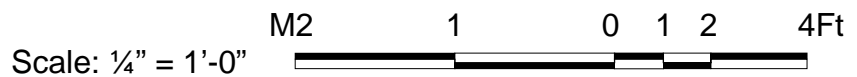
JSN	SYMBOL	QTY	AI	DESCRIPTION
F0530		1	VV	<u>Cart, Trash</u> Heavy duty trash cart, 42" high X 74" wide X 34" deep with two (2) solid non-marking rubber roller bearing wheels, two (2) swivel casters, 2000 pound capacity and tilt mechanism.
F2000		1	VV	<u>Basket, Wastepaper, Round, Metal</u> Round wastepaper basket, approximately 18" high X 16" diameter. This metal unit is used to collect and temporarily store small quantities of paper refuse in patient rooms, administrative areas and nursing stations.
M2055		1	VV	<u>Shelving, Storage, Wire, with Adjustable Shelves</u> Stationary, wire, shelving unit. Unit has fully adjustable shelves constructed of stainless steel. For use in general purpose storage areas. Shelving is provided in various sizes and configurations. Price provided is for a unit approximately 74"H x 18"D x 48"W with four shelves.
M2070		AR	VV	<u>Shelving, Storage, 77x36x18</u> Storage shelving unit approximately 77" H X 36" W X 18" D. Corrosion resistant baked enamel, galvanized or stainless steel open unit with adjustable shelves. The closed version is also available. For use in the storage room.
		AR		Bulk shelving units.
		AR	CC	Receptacle, electrical, duplex, 120 volt (PG-18-1, MCS 26 27 26).

Dispatch Area (ZSPD3)

Floor Plan



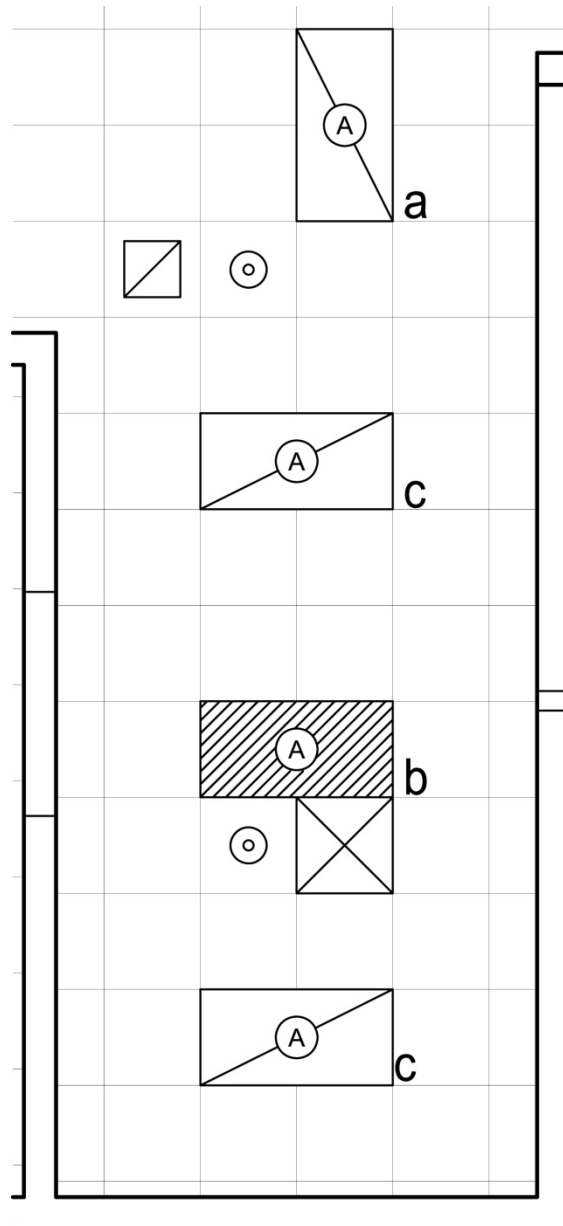
200 NSF / 18.6 NSM



NOTE: Guide plates are graphical representations of selected room types, illustrating the integration of space, components, systems, and equipment. They provide typical configurations and general technical guidance, and are not intended to be project specific. Specific infrastructure design requirements are contained in VA Design Manuals and Space Planning Criteria located in the VA Technical Information Library.

Dispatch Area (ZSPD3)

Reflected Ceiling Plan



200NSF / 18.6 NSM



NOTE: Guide plates are graphical representations of selected room types, illustrating the integration of space, components, systems, and equipment. They provide typical configurations and general technical guidance, and are not intended to be project specific. Specific infrastructure design requirements are contained in VA Design Manuals and Space Planning Criteria located in the VA Technical Information Library.

Dispatch Area (ZSPD3)

Design Standards

ARCHITECTURAL

Ceiling:	AT (SP)
Ceiling Height:	9'-0" (2700 mm)
Wall Finish:	GWB (SC)
Wainscot:	--
Base:	RB
Floor Finish:	VCT
Slab Depression:	--
Sound Protection:	--

Notes:

- 1) 0.1x sterile/ non-sterile storage.

SPECIAL EQUIPMENT

--

LIGHTING

General:	70 FC – 1.5 W/SF
Special:	As Shown

Notes:

- 1) Fixture A: 2'x4' (600 mm x 1200 mm) recessed, grid mounted fluorescent light fixture, UL listed for wet location, prismatic lens with gasketing, w/ F32T8 lamps 3500•K, CRI=70 (minimum).).
- 2) The foot-candle level is average maintained.
- 3) Provide ballasts per fixture for desired switching configuration. To provide a uniform lighting level, switch inner lamp(s) on first switch and outer lamps on second switch.
- 4) Exact quantity, location, and lamping of light fixtures shall be chosen to meet the foot-candle requirement.

POWER

General:	As Shown
Emergency:	As Shown

Notes:

- 1) Coordinate location and height of work station receptacles with modular furniture.

COMMUNICATION/SPECIAL SYSTEMS

Data:	Yes
Telephone:	Yes
Intercom:	Yes
Nurse Call:	--
Public Address:	Yes*
Radio/Entertainment:	--
MATV:	--
CCTV:	--
MID:	--
Security/Duress:	--
VTEL:	--
VA Satellite TV:	--

Notes: *Connect to hospital system

- 1) Coordinate location and height of work station telephone/data outlets with modular furniture.

HEATING, VENTILATING AND AIR CONDITIONING

Inside Design Conditions:

Dry-Bulb Temperature:	70F – 75F (21C – 24C)
Relative Humidity:	30% - 55%
Minimum Total Air Changes per Hour:	4
Room Air Exhaust Required:	Yes, 100%
Special Exhaust or General Exhaust:	General Exhaust
Room Air Return Permitted:	No
Room Air Balance:	Neutral (0)
Notes:	--

PLUMBING AND MEDICAL GASES

Cold Water:	--
Hot Water:	--
Laboratory Air:	--
Laboratory Vacuum:	--
Sanitary Drain:	--
Reagent Grade Water:	--
Medical Air:	--
Medical Vacuum:	--
Oxygen:	--
Notes:	--

Dispatch Area (ZSPD3)

Equipment List

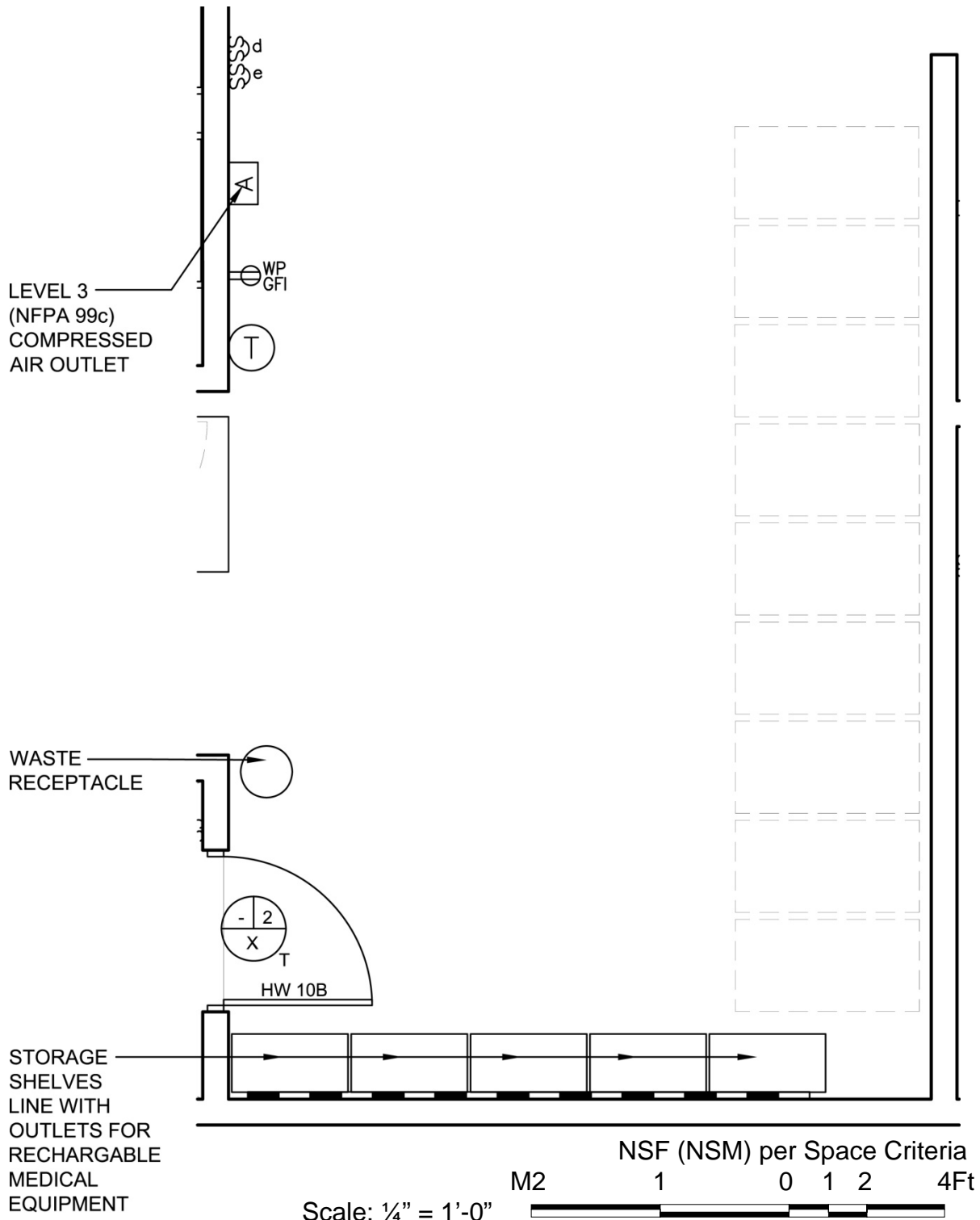
JSN	SYMBOL	QTY	AI	DESCRIPTION
A1010		1	CC	<u>Telephone/Data Combination Outlet (PG-18-1, MCS 27 31 00)</u> Telephone/data outlet location.
A1015		1	CC	<u>Telephone, Desk, Multiple Line</u> Telephone, desk, multiple line.
A1016		1	CC	<u>Telephone, Desk, with Speaker</u> Telephone, desk, with speaker.
C0045		1	CC	<u>Frame, Apron, 1 Drawer, 4x36x22</u> Apron frame with one standard drawer. Also referred to as a drawer frame or table frame. Used for a knee space as a combination frame and drawer to support a top between base cabinets or a base cabinet and a wall. No wood or cloth permitted.
C0046		1	CC	<u>Frame, Apron, 2 Drawer, 4x48x22</u> Apron frame with two standard drawers. Also referred to as a drawer frame or table frame. Used for a knee space as a combination frame and drawers to support a top between base cabinets or a base cabinet and a wall. No wood or cloth permitted.
C06M0		6	CC	<u>Cabinet, Under Counter Base, 1 Pullboard, 2 Drawer, 1 File Drawer, 30x18x22</u> Sitting height under counter base cabinet with a pullboard above two drawers and file drawer. Also referred to as a drawer cabinet. For general purpose use throughout the facility. No wood or cloth permitted.
C09F0		1	CC	<u>Cabinet, Under Counter Base, 2 Half Drawer, 2 Door</u> Sitting height under counter base cabinet, 30" H x 36" W x 22" D with two half width drawers above solid hinged doors. Also referred to as a combination cabinet or drawer and cupboard cabinet. For general purpose use throughout the facility. No wood or cloth permitted.
C09G0		1	CC	<u>Cabinet, U/C/B, 1 Shelf, 2 Doors, 30x36x22</u> Sitting height under counter base cabinet with one adjustable shelf and solid hinged doors. Also referred to as a cupboard or door cabinet. For general purpose use throughout the facility. No wood or cloth permitted.
CG040		1	CC	<u>Cabinet, Wall Hung, 2 Shelves, 2 Sliding Glass Doors, Sloping Top, 38x36x13</u> Wall hung cabinet with two adjustable shelves, framed-glass sliding doors, and sloping top. Also referred to as a framed-glass sliding double door wall case. For general purpose use throughout the facility. No wood or cloth permitted.
CG050		1	CC	<u>Cabinet, Wall Hung, 2 Shelves, 2 Sliding Glass Doors, Sloping Top, 38x48x13</u>

				Wall hung cabinet with two adjustable shelves, framed-glass sliding doors, and sloping top. Also referred to as a framed-glass sliding double door wall case. For general purpose use throughout the facility. No wood or cloth permitted.
E0078		1	VV	<u>Workstation, Modular</u> Refer to plan for layout.
F0110		1	VV	<u>Bookcase, 3 Shelf</u> Freestanding open metal shelf book case, approximately 60" high X 36" wide X 18" deep with three (3) adjustable shelves and four (4) non-marking floor glides.
F0275		1	VV	<u>Chair, Swivel, High Back</u> Highback contemporary swivel chair, 41" high X 23" wide X 23" deep with five (5) caster swivel base and arms. Chair may be used at desks or in conference rooms. Back and seat are foam padded and upholstered with vinyl. No cloth permitted.
F0280		1	VV	<u>Chair, Swivel, Low Back</u> Low back contemporary swivel chair, 37" high X 25" wide X 31" deep with a five (5) caster swivel base, arms and foam padded seat and back upholstered with vinyl. No cloth permitted.
F0405		1	VV	<u>Cabinet, Filing, Full Height, 4-5 Drawer</u> Four (4) or five (5) drawer letter size, vertical filing cabinet, 53" high X 15" wide X 29" deep with locking device. Each drawer has label holder, handle and roller cradle.
F0420		1	VV	<u>Cabinet, Filing, Lateral, Half Height, 36" Wide</u> Half height two (2) or three (3) drawer lateral filing cabinet, 28" high X 42" wide X 18" deep with recessed handles, locking device and drawer label holders. Drawers are adaptable to either letter or legal size materials.
F0635		1	VV	<u>Desk, Double Pedestal</u> Double pedestal flat top desk, 30" high X 60" wide X 30" deep with center pencil drawer, choices of combinations of file and box drawers, floor glides and modesty panel.
F2000		1	VV	<u>Basket, Wastepaper, Round, Metal</u> Round wastepaper basket, approximately 18" high X 16" diameter. This metal unit is used to collect and temporarily store small quantities of paper refuse in patient rooms, administrative areas and nursing stations.
F3050		1	CC	<u>Whiteboard, Dry Erase</u> Whiteboard unit, approximately 36" H x 48" W consisting of a white porcelain enamel writing surface with an attached chalk tray. Magnetic surface available. Image can be easily removed with a standard chalkboard eraser. For use with water color pens. Unit is ready to hang.
F3200		1	VV	<u>Clock, Battery, 12" Diameter</u>

				Clock, 12" diameter. Round surface, easy to read numbers with sweep second hand. Wall mounted unit for use when impractical to install a fully synchronized clock system. Battery operated, (batteries not included).
M1801		1	VV	<u>Computer, Microprocessing, with Flat Panel Monitor</u> Desk top microprocessing computer. The unit shall consist of a central processing mini tower, flat panel monitor, keyboard, mouse and speakers. The computer is used throughout the facility to input, manipulate and retrieve information.
M1820		1	VV	<u>Imprinter, Data Record, Electric</u> Electric data record imprinter. The device accepts embossed plastic patient cards in either the 50 column or the 80 column format and adjusts automatically for card size and form thickness. Device will provide clear readable impressions with a cycle that is less than 1 second in length. Electro-mechanical design provides for a consistent impression that is independent of operator knowledge or technique. Unit may include a date/time stamp as an accessory.
M1825		1	VV	<u>Printer, Computer</u> High resolution computer printer with a variety of type styles and sheet/envelope feeder trays. Database information reflects network ready, medium duty office style laser printers. Other types of printers (bubble jet, dot matrix, line or plotter) as well as light or heavy use capabilities are available.
M1840		1	VV	<u>Printer/Copier/Fax Combination</u> Multifunctional printer, fax, scanner and copier (PFC) all-in-one machine.
M4125		1	VV	<u>Radio Communication System</u> Radio equipment to support daily administrative, patient transport, emergency, mass casualty, fire protection and security operations. Includes base station(s), handheld portables, vehicle units, antennas, power supplies, controllers, electrical panels, computers, pagers and other equipment as required. The size, complexity and cost of the system depend on the geographic region covered, dispersement of the facility staff, size and capability of the facility, facility mission and distances to supporting police, fire and disaster relief organizations.
		AR	CC	Receptacle, electrical, duplex (PG-18-1, MCS 26 27 26).
		AR	CC	Receptacle, electrical, quadruplex, for computer equipment items (PG-18-1, MCS 26 27 26).
		1	CC	Public address speaker, ceiling mount (PG-18-1, MCS 27 51 16).
		AR	CC	Intercom outlet (PG-18-1, MCS 27 51 23).
		AR	CC	Computer Data outlet (PG-18-1, MCS 27 31 00).

Equipment Storage and Testing Area (SRE01)

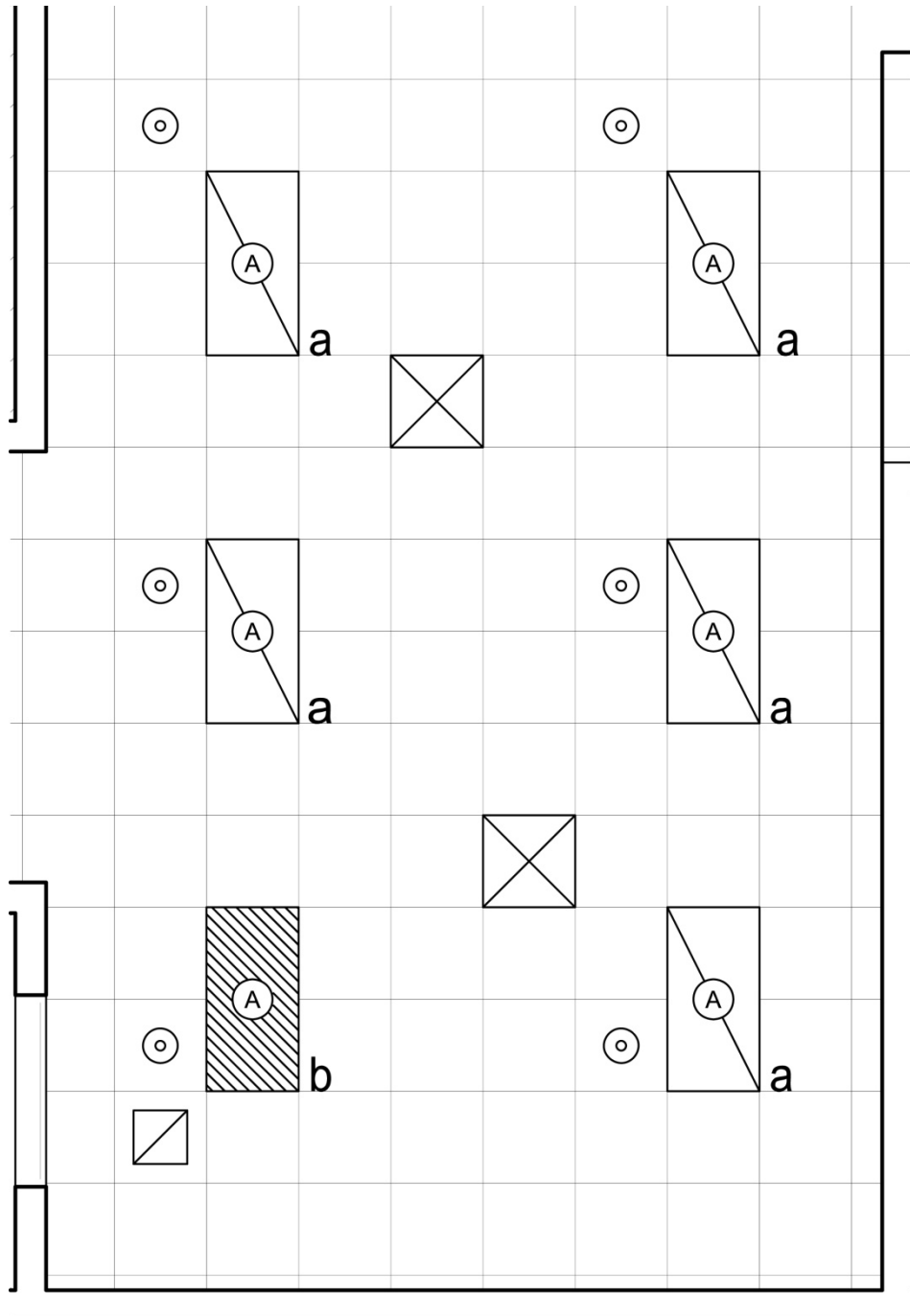
Floor Plan



NOTE: Guide plates are graphical representations of selected room types, illustrating the integration of space, components, systems, and equipment. They provide typical configurations and general technical guidance, and are not intended to be project specific. Specific infrastructure design requirements are contained in VA Design Manuals and Space Planning Criteria located in the VA Technical Information Library.

Equipment Storage and Testing Area (SRE01)

Reflected Ceiling Plan



NSF (NSM) per Space Criteria
M2 1 0 1 2 4Ft

Scale: 1/4" = 1'-0"



NOTE: Guide plates are graphical representations of selected room types, illustrating the integration of space, components, systems, and equipment. They provide typical configurations and general technical guidance, and are not intended to be project specific. Specific infrastructure design requirements are contained in VA Design Manuals and Space Planning Criteria located in the VA Technical Information Library.

Equipment Storage and Testing Area (SRE01)

Design Standards

ARCHITECTURAL

Ceiling:	AT (SP)
Ceiling Height:	9'-0" (2700 mm)
Wall Finish:	GWB (SC)
Wainscot:	--
Base:	RB
Floor Finish:	VCT
Slab Depression:	--
Sound Protection:	--

Notes:

- 1) .035x sterile/ non-sterile storage must be situated close to Prep Area.

SPECIAL EQUIPMENT

Wall Protection	--
-----------------	----

LIGHTING

General:	50 FC – 1 W/SF
Special:	As Shown

Notes:

- 1) Fixture A: 2'x4' (600 mm x 1200 mm) recessed, grid mounted fluorescent light fixture, UL listed for wet location, prismatic lens with gasketing, w/ F32T8 lamps 3500•K, CRI=70 (minimum).
- 2) The foot-candle level is average maintained.
- 3) Provide ballasts per fixture for desired switching configuration. To provide a uniform lighting level, switch inner lamp(s) on first switch and outer lamps on second switch.
- 4) Exact quantity, location, and lamping of light fixtures shall be chosen to meet the foot-candle requirement.

POWER

General:	As Shown
Emergency:	Egress lighting
Notes:	--

COMMUNICATION/SPECIAL SYSTEMS

Data:	--
Telephone:	--
Intercom:	--
Nurse Call:	--
Public Address:	--
Radio/Entertainment:	--
MATV:	--
CCTV:	--
MID:	--
Security/Duress:	--
VTEL:	--
VA Satellite TV:	--
Notes:	--

HEATING, VENTILATING AND AIR CONDITIONING

Inside Design Conditions:

Dry-Bulb Temperature:	73F (23C)
Relative Humidity:	30% - 55%
Minimum Total Air Changes per Hour:	4
Room Air Exhaust Required:	Yes, 100%
Special Exhaust or General Exhaust:	General Exhaust
Room Air Return Permitted:	No
Room Air Balance:	Note 1)

Notes:

- 1) Positive (+) to surrounding corridor

PLUMBING AND MEDICAL GASES

Cold Water:	--
Hot Water:	--
Non-Patient Medical Air:	Yes
Laboratory Vacuum:	--
Sanitary Drain:	--
Reagent Grade Water:	--
Medical Air:	--
Medical Vacuum:	--
Oxygen:	--
Notes:	--

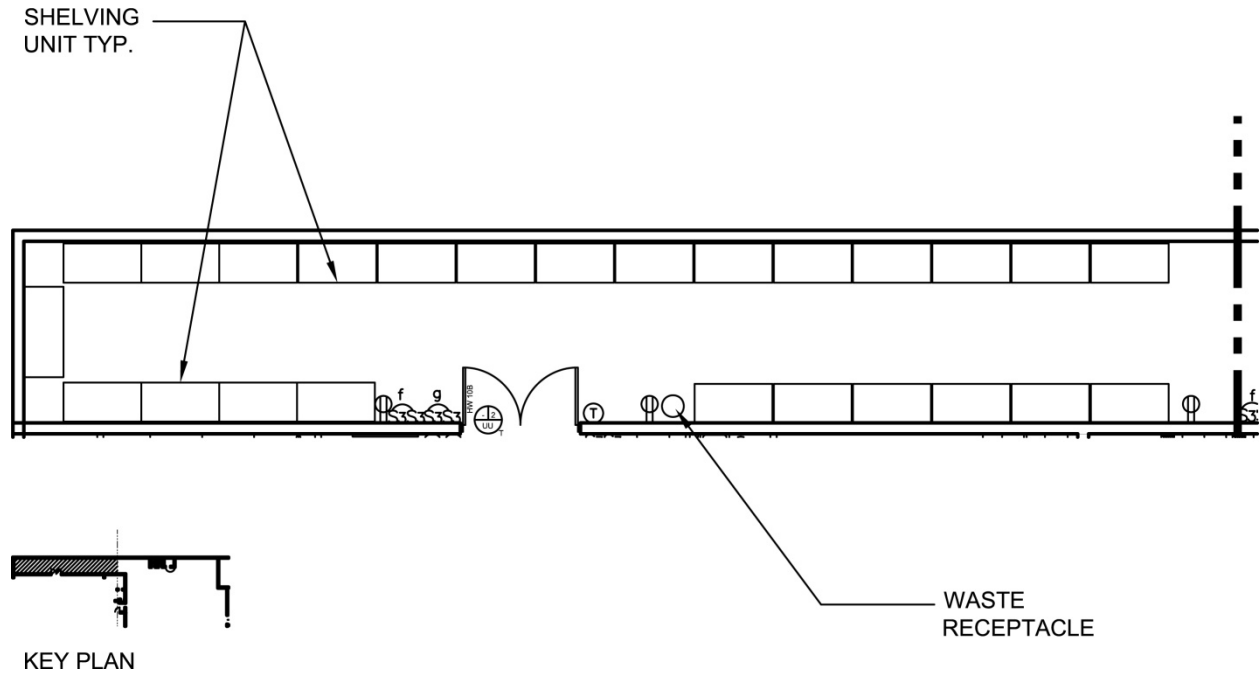
Equipment Storage and Testing Area (SRE01)

Equipment List

JSN	SYMBOL	QTY	AI	DESCRIPTION
		AR		<u>Table, Stainless Steel, with Drawers</u> Stainless steel work table with closed drawers.
F2000		1	VV	Round wastepaper basket, approximately 18" high X 16" diameter. This metal unit is used to collect and temporarily store small quantities of paper refuse in patient rooms, administrative areas and nursing stations.
M2070		AR	VV	Storage shelving unit approximately 77" H X 36" W X 18" D. Corrosion resistant baked enamel, galvanized or stainless steel open unit with adjustable shelves. The closed version is also available. For use in the storage room.
		AR	CC	Receptacle, electrical, duplex, 120 volt, ground fault interrupter (PG-18-1, MCS 26 27 26).
		AR	CC	Surface mount, multiple outlet assembly w/120 volt receptacles (PG-18-1, MCS 26 27 26).

Sterile and Non-Sterile Storage Area (Surgery) (ORSS1)

Floor Plan



NSF (NSM) per Space Criteria

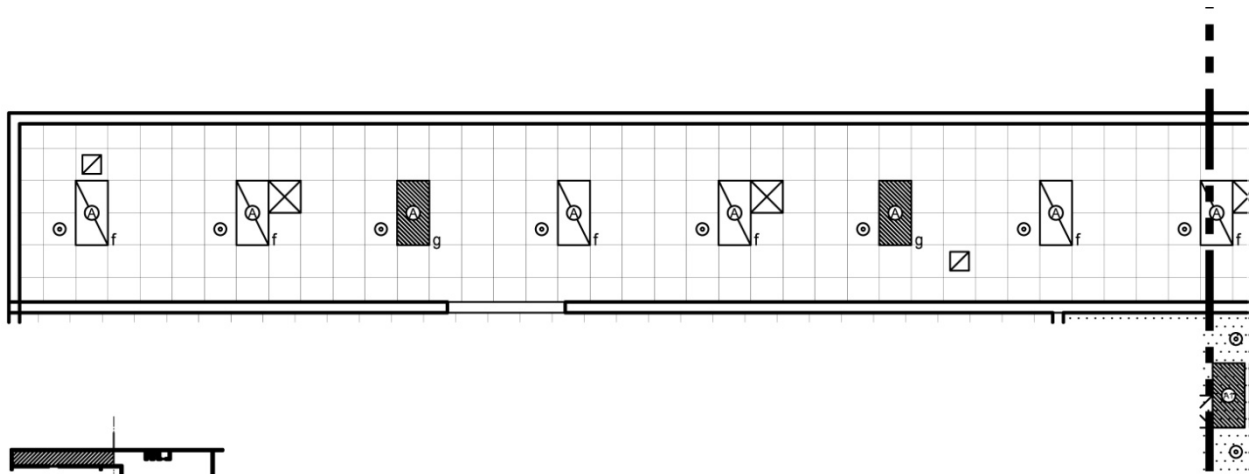
M2 1 0 2'-8" 5'-4" 10'-8" Ft

Scale: 3/32" = 1'-0"



NOTE: Guide plates are graphical representations of selected room types, illustrating the integration of space, components, systems, and equipment. They provide typical configurations and general technical guidance, and are not intended to be project specific. Specific infrastructure design requirements are contained in VA Design Manuals and Space Planning Criteria located in the VA Technical Information Library.

Sterile and Non-Sterile Storage Area (Surgery) (ORSS1)
Reflected Ceiling Plan



KEY PLAN

NSF (NSM) per Space Criteria

M2 1 0 2'-8" 5'-4" 10'-8" Ft

Scale: 3/32" = 1'-0"



NOTE: Guide plates are graphical representations of selected room types, illustrating the integration of space, components, systems, and equipment. They provide typical configurations and general technical guidance, and are not intended to be project specific. Specific infrastructure design requirements are contained in VA Design Manuals and Space Planning Criteria located in the VA Technical Information Library.

Sterile and Non-Sterile Storage Area (Surgery) (ORSS1)

Design Standards

ARCHITECTURAL

Ceiling:	AT (SP)
Ceiling Height:	9'-0" (2700 mm)
Wall Finish:	GWB (SC)
Wainscot:	--
Base:	WSF
Floor Finish:	WSF
Slab Depression:	--
Sound Protection:	--
Notes:	--

SPECIAL EQUIPMENT

Wall Protection	--
-----------------	----

LIGHTING

General:	20 FC – 0.5 W/SF (MIN)
Special:	As Shown
Notes:	

- 1) Fixture A: 2'x4' (600 mm x 1200 mm) recessed, grid mounted fluorescent light fixture, UL listed for wet location, prismatic lens with gasketing, w/ F32T8 lamps 3500•K, CRI=70 (minimum).
- 2) The foot-candle level is average maintained.
- 3) Provide ballasts per fixture for desired switching configuration. To provide a uniform lighting level, switch inner lamp(s) on first switch and outer lamps on second switch.
- 4) Exact quantity, location, and lamping of light fixtures shall be chosen to meet the foot-candle requirement.

POWER

General:	As Shown
Emergency:	As Shown
Notes:	--

COMMUNICATION/SPECIAL SYSTEMS

Data:	Yes
Telephone:	Yes
Intercom:	--
Nurse Call:	--
Public Address:	--
Radio/Entertainment:	--
MATV:	--
CCTV:	--
MID:	--
Security/Duress:	--
VTEL:	--
VA Satellite TV:	--
Notes:	--

HEATING, VENTILATING AND AIR CONDITIONING

Inside Design Conditions:	
Dry-Bulb Temperature:	73F (23C)
Relative Humidity:	30% - 55%
Minimum Total Air Changes per Hour:	4
Room Air Exhaust Required:	Yes, 100%
Special Exhaust or General Exhaust:	General Exhaust
Room Air Return Permitted:	No
Room Air Balance:	Positive (+)
Notes:	

PLUMBING AND MEDICAL GASES

Cold Water:	--
Hot Water:	--
Laboratory Air:	--
Laboratory Vacuum:	--
Sanitary Drain:	--
Reagent Grade Water:	--
Medical Air:	--
Medical Vacuum:	--
Oxygen:	--
Notes:	--

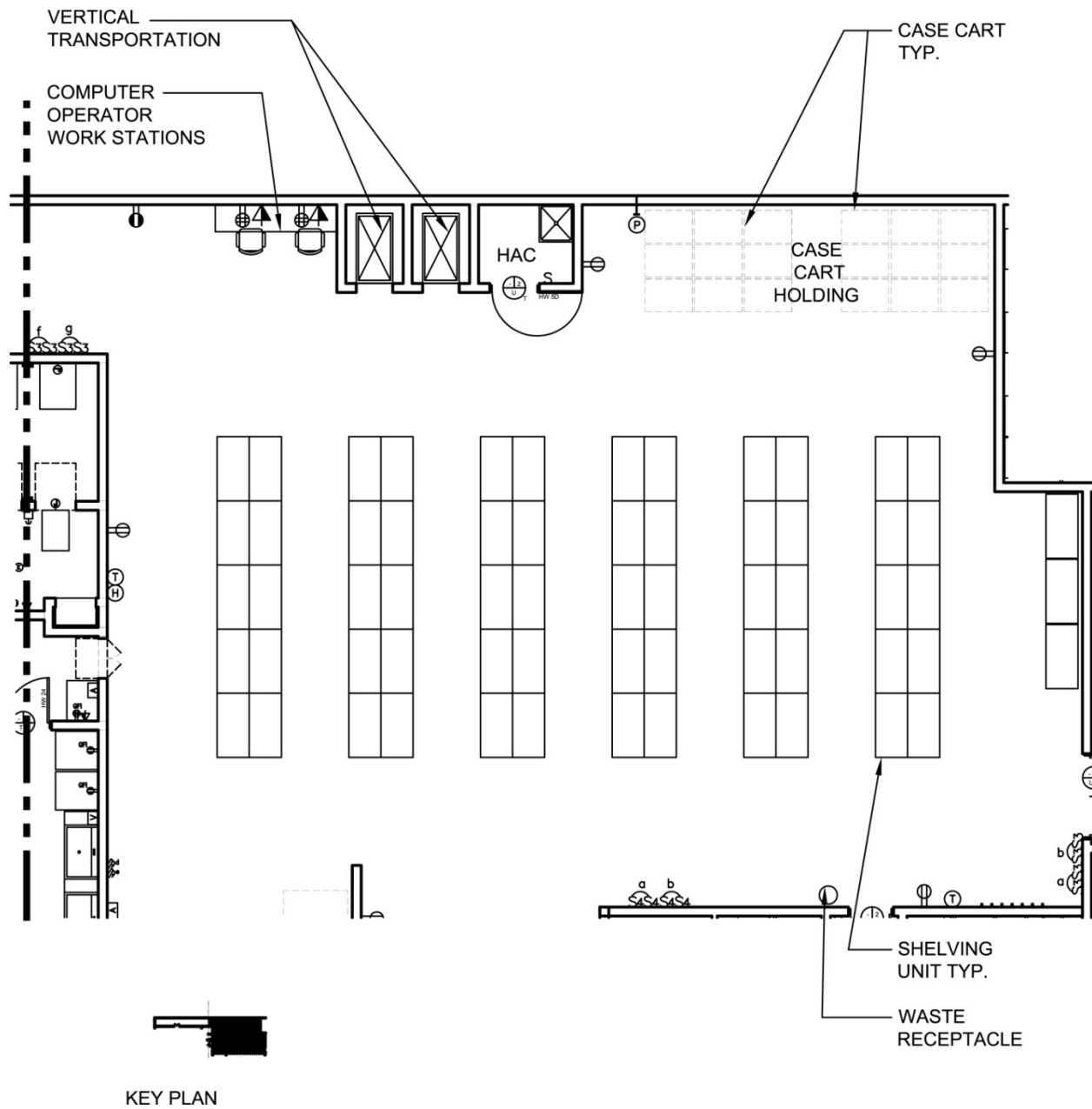
Sterile and Non-Sterile Storage Area (Surgery) (ORSS1)

Equipment List

JSN	SYMBOL	QTY	AI	DESCRIPTION
		AR		<u>Shelves, Freestanding, Open Wire, on Wheels</u> Freestanding open wire shelves on wheels. Bottom shelf is to be solid and 8" from the floor.
A5145		1	CC	<u>Hook, Garment, Double, Stainless Steel, Surface Mounted</u> A surface mounted, satin finish stainless steel, double garment hook. Equipped with a concealed mounting bracket that is secured to a concealed wall plate. For general purpose use throughout the facility to hang various items of apparel.
F2000		1	VV	<u>Basket, Wastepaper, Round, Metal</u> Round wastepaper basket, approximately 18" high x 16" diameter. This metal unit is used to collect and temporarily store small quantities of paper refuse in patient rooms, administrative areas and nursing stations.
		AR	CC	Receptacle, electrical, duplex, 120 volt (PG-18-1, MCS 26 27 26).
		AR	CC	Receptacle, electrical, quadruplex, 120 volt, for computer equipment items (PG-18-1, MCS 26 27 26).
		AR	CC	Telephone/Data combination outlet (PG-18-1, MCS 27 31 00).

Sterile and Non-Sterile Storage Area (Nursing Units) (SRS01)

Floor Plan



NSF (NSM) per Space Criteria

M2 1 0 2'-8" 5'-4" 10'-8" Ft

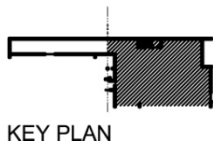
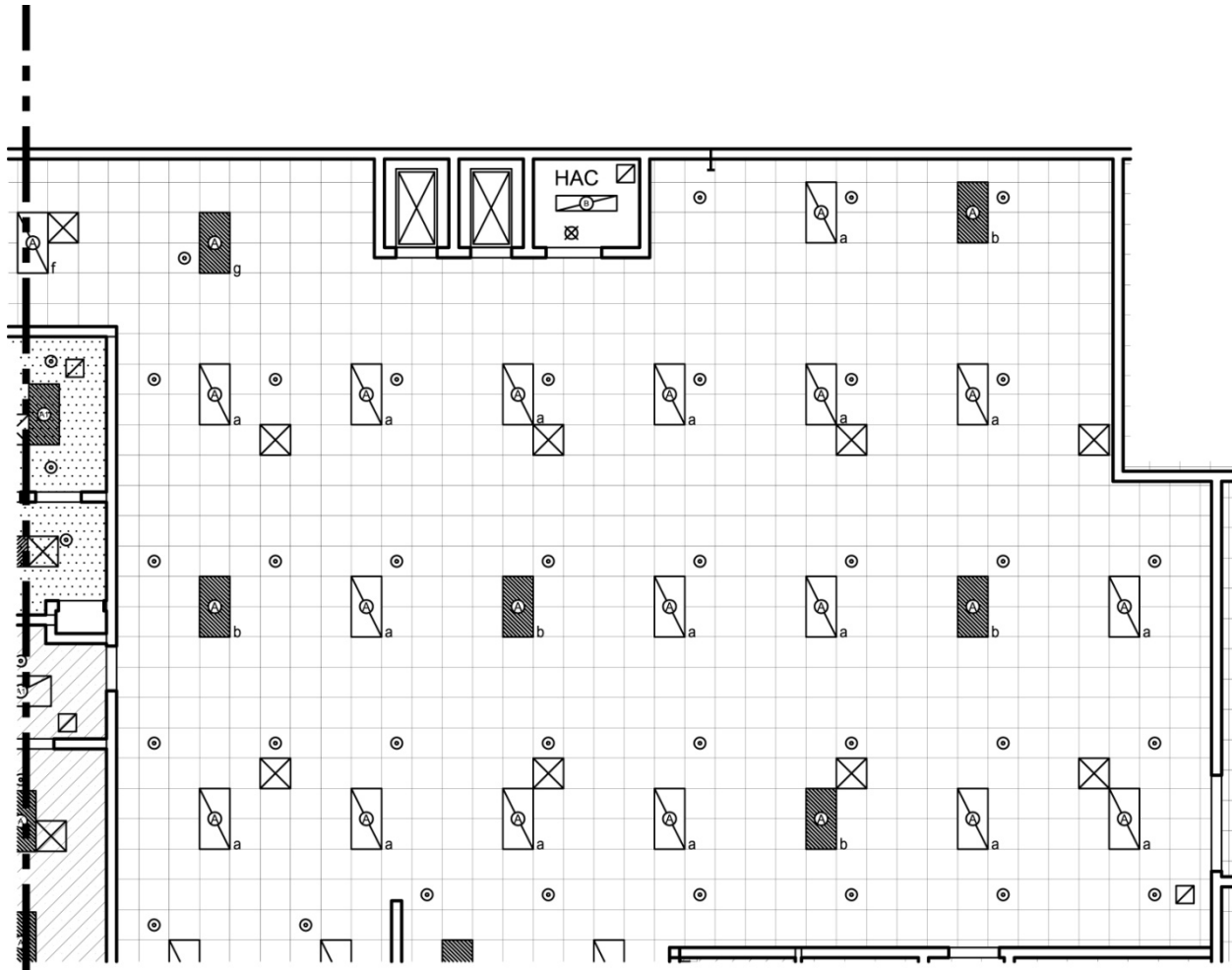
Scale: 3/32" = 1'-0"



NOTE: Guide plates are graphical representations of selected room types, illustrating the integration of space, components, systems, and equipment. They provide typical configurations and general technical guidance, and are not intended to be project specific. Specific infrastructure design requirements are contained in VA Design Manuals and Space Planning Criteria located in the VA Technical Information Library.

Sterile and Non-Sterile Storage Area (Nursing Units) (SRS01)

Reflected Ceiling Plan



NSF (NSM) per Space Criteria

M2 1 0 2'-8" 5'-4" 10'-8" Ft

Scale: 3/32" = 1'-0"



NOTE: Guide plates are graphical representations of selected room types, illustrating the integration of space, components, systems, and equipment. They provide typical configurations and general technical guidance, and are not intended to be project specific. Specific infrastructure design requirements are contained in VA Design Manuals and Space Planning Criteria located in the VA Technical Information Library.

Sterile and Non-Sterile Storage Area (Nursing Units) (SRS01)

Design Standards

ARCHITECTURAL

Ceiling:	AT (SP)
Ceiling Height:	9'-0" (2700 mm)
Wall Finish:	GWB (SC)
Wainscot:	--
Base:	RB
Floor Finish:	VCT
Slab Depression:	--
Sound Protection:	--
Notes:	--

SPECIAL EQUIPMENT

Wall Protection	--
-----------------	----

LIGHTING

General:	20 FC – 0.5 W/SF (MIN)
Special:	As Shown

Notes:

- 1) Fixture A: 2'x4' (600 mm x 1200 mm) recessed, grid mounted fluorescent light fixture, UL listed for wet location, prismatic lens with gasketing, w/ F32T8 lamps 3500•K, CRI=70 (minimum).).
- 2) The foot-candle level is average maintained.
- 3) Provide ballasts per fixture for desired switching configuration. To provide a uniform lighting level, switch inner lamp(s) on first switch and outer lamps on second switch.
- 4) Exact quantity, location, and lamping of light fixtures shall be chosen to meet the foot-candle requirement.

POWER

General:	As Shown
Emergency:	Egress lighting
Notes:	--

COMMUNICATION/SPECIAL SYSTEMS

Data:	--
Telephone:	--
Intercom:	--
Nurse Call:	--
Public Address:	--
Radio/Entertainment:	--
MATV:	--
CCTV:	--
MID:	--
Security/Duress:	--
VTEL:	--
VA Satellite TV:	--
Notes:	--

HEATING, VENTILATING AND AIR CONDITIONING

Inside Design Conditions:	
Dry-Bulb Temperature:	73F (23C)
Relative Humidity:	30% - 55%
Minimum Total Air Changes per Hour:	4
Room Air Exhaust Required:	Yes, 100%
Special Exhaust or General Exhaust:	General Exhaust
Room Air Return Permitted:	No
Room Air Balance:	Note 1)
Notes:	
1) Positive (+) to Clean Receiving & Breakout Area	

PLUMBING AND MEDICAL GASES

Cold Water:	--
Hot Water:	--
Laboratory Air:	--
Laboratory Vacuum:	--
Sanitary Drain:	--
Reagent Grade Water:	--
Medical Air:	--
Medical Vacuum:	--
Oxygen:	--
Notes:	--

Sterile and Non-Sterile Storage Area (Nursing Units) (SRS01)

Equipment List

JSN	SYMBOL	QTY	AI	DESCRIPTION
		AR		<u>Shelves, Freestanding, Open Wire, on Wheels</u> Freestanding open wire shelves on wheels. Bottom shelf is to be solid and 8" from the floor.
A5145		1	CC	<u>Hook, Garment, Double, Stainless Steel, Surface Mounted</u> A surface mounted, satin finish stainless steel, double garment hook. Equipped with a concealed mounting bracket that is secured to a concealed wall plate. For general purpose use throughout the facility to hang various items of apparel.
F2000		1	VV	<u>Basket, Wastepaper, Round, Metal</u> Round wastepaper basket, approximately 18" high X 16" diameter. This metal unit is used to collect and temporarily store small quantities of paper refuse in patient rooms, administrative areas and nursing stations.
M2070		AR	VV	<u>Shelving, Storage, 77x36x18</u> Storage shelving unit approximately 77" H X 36" W X 18" D. Corrosion resistant baked enamel, galvanized or stainless steel open unit with adjustable shelves. The closed version is also available. For use in the storage room.
		AR		<u>Shelves, Freestanding, Open Wire, on Wheels</u> Freestanding open wire shelves on wheels. Bottom shelf is to be solid.
		AR		Closed transport carts.
		AR	CC	Receptacle, electrical, duplex, 120 volt (PG-18-1, MCS 26 27 26).

This page intentionally left blank.

Section 5

Appendix

	Page
Glossary of Terms.....	5-1
SEPS / Cross-Reference Guide Plate Index.....	5-3



This page intentionally left blank.

Glossary of Terms

AERATOR: A machine designed to speed up the removal of EtO residues from sterilized items by subjecting them to warm, circulating air.

BIOBURDEN: Population of viable microorganisms on a product and/or a package.

CENTRAL SERVICE DEPARTMENT: Department within a health care facility that processes, issues, and controls medical supplies, devices, and equipment, both sterile and non-sterile, for some or all patient care areas of the facility. Also known as **STERILE PROCESSING DEPARTMENT**.

CLEANING: The physical removal of debris. It has two major effects. First, it results in a reduction in the number of microorganisms present. Second, it removes organic matter, such as blood and tissue, and other debris, which may interfere with sterilization or disinfection.

DECASING / BREAKOUT AREA or SPACE: Unpacking area or space where products are removed from their external shipping containers before being taken into the preparation and packaging area or the sterile storage area.

DECONTAMINATION: According to OSHA, "the use of physical or chemical means to remove, inactivate, or destroy blood-borne pathogens on a surface or item to the point where they are no longer capable of transmitting infectious particles and the surface item is rendered safe for handling, use, or disposal." [29 CFR 1910.1030].

DISINFECTION: Process that kills pathogenic and other microorganisms by physical or chemical means.

DISINFECTION, HIGH LEVEL: Process that kills all microbial organisms but not necessarily large numbers of bacterial spores.

DISINFECTION, INTERMEDIATE LEVEL: Process that kills viruses, mycobacteria, fungi, and vegetative bacteria, but not necessarily bacterial spores.

ETHYLENE OXIDE GAS STERILIZER (EtO): Sterilization at relatively low temperatures possible with ethylene oxide gas. Using a heated unit at 49C (120F), sterilization can be achieved in 2 - 3 hours.

NONRESTRICTED AREA: Area where traffic is not limited and where attire is not prescribed.

OCCUPATIONAL HAZARD: Contact, through inhalation, ingestion, skin contact, or absorption, with a potentially hazardous material during the course of employment. Occupational exposure to hazardous materials, including chemical and biological agents and potentially infectious materials, is regulated by OSHA (29 CFR Part 1910).

OSHA: Occupational Safety and Health Administration.

PERSONAL PROTECTIVE EQUIPMENT (PPE): According to OSHA, "specialized clothing or equipment worn by an employee for protection against a hazard. General work clothes (e.g., uniforms, pants, shirts, or blouses) not intended to function as protection against a hazard are not considered to be personal protective equipment." [29 CFR 1910.1030].

PLASMA GAS STERILIZATION (STERRAD): To sterilize an item that cannot be sterilized by steam and have been validated to be sterilized by plasma gas. Plasma gas is not a replacement for EtO as it has many limitations as to what can be sterilized by this method due to absorption and lumen limitations.

PRIMARY STOCK: Medical supplies stored within the confines of the SPD Department

PROCESSING AREA: Area of a health care facility in which decontaminated, clean instruments, and other medical and surgical supplies are inspected, assembled into sets and trays, and wrapped, packaged, or placed into rigid sterilization container systems for subsequent sterilization. Note - This area is commonly referred to as the "preparation and packaging area" if it is part of Central Service and as a "pack room" if textile packs are assembled there.

RESTRICTED AREA: Area where access and traffic are limited to authorized personnel and where attire might be prescribed.

REUSABLE MEDICAL DEVICE: Device intended for repeated use on different patients, with appropriate decontamination and other processing between uses.

SECONDARY STOCK: Medical supplies stored in user areas such as wards, clinics, nursing care units, and intensive care units.

STEAM STERILIZATION: Sterilization process that uses saturated steam under pressure, for a specified exposure time and at a specified temperature, as the sterilizing agent.

STERILE: Free from viable microorganisms.

STERILE STORAGE AREA: Area of a health care facility designed to store clean and sterile items and protect them from contamination.

STERILIZATION: Validated process used to render a product free from viable microorganisms. Note - In a sterilization process, the nature of microbiological inactivation is described by an exponential function. Therefore, the presence of a viable microorganism on any individual item can be expressed in terms of probability. While the probability can be reduced to a very low number, it can never be reduced to zero.

STERILIZATION AREA: Area of a health care facility where sterilization activities take place.

STERILIZER, STEAM: Sterilizer that uses saturated steam under pressure as the sterilant.

SEPS / Cross-Reference Guide Plate Index

SEPS Space Designation	Chapter 285 Space Name	Page
(JANC1)	Housekeeping Aides Closet Decon & Clean Areas	4-2
(ZSPD4)	Staff-Conference Room	4-6
(OFA03)	Office, First Clerk	4-12
(OFM01)	Office, Chief of SPD	4-18
(OFA01)	Office, Assistant Chief of SPD	4-24
(CSDE4)	Ante-Room (Clean Area)	4-30
(LR001)	Locker Rooms (Clean Area)	4-34
(TLTS1)	Toilet & Shower Rooms (Clean Area)	4-38
(CWSH2)	Automatic Cart Wash	4-44
(LBWA1)	Detergent & Water Treatment Room	4-48
(CSDE4)	Ante-Room (Soiled Area)	4-52
(ZSPD1)	Soiled Receiving and Decontamination Area	4-56
(CWSH1)	Manual Equipment Wash	4-64
(USCL2)	Endoscope Processing/High Level Disinfection	4-68
(ZSPD2)	Scope Storage	4-72
(CSDE4)	Decontamination/Ante-Room/PPE/Gowning	4-76
(LR001)	Locker Rooms (Soiled Area)	4-80
(TLTS1)	Toilet & Shower Rooms (Soiled Area)	4-84
(CSSS4/CSSS5)	EtO Sterilizer/Aerator Room	4-90
(CSIA3)	Preparation, Assembly, & Sterilization Area	4-96
(CSCQ2)	Ante-Room (Dispatch Area)	4-102
(CSIA2)	Clean Receiving and Breakout Area	4-106
(SRS01)	Bulk Storage Area	4-112
(ZSPD3)	Dispatch Area	4-116
(SRE01)	Equipment Storage and Testing Area	4-122
(ORSS1)	Sterile & Non-Sterile Storage Area (Surgery)	4-126
(SRS01)	Sterile & Non-Sterile Storage Area (Nursing Units)	4-130

This page intentionally left blank.