

Section 4



Guide Plates

	Page
Introduction.....	4-1

Guide Plate

The Guide Plates are organized by Functional Area and then by room name. Guide Plates that apply to more than one functional area are at the front of this section.

See Appendix in Section 5 for Index of Guide Plates by all functional areas, including cross reference by room designations (SEPS code) used in the Space Planning Criteria.

Housekeeping Aides Closet.....	4-2
--------------------------------	-----

Administrative Areas

Staff-Conference Room.....	4-6
Office, First Clerk.....	4-12
Office, Chief of SPD.....	4-18
Office, Assistant Chief of SPD.....	4-24

Lockers and Toilets (Clean Area)

Ante-Room.....	4-30
Locker Rooms.....	4-34
Toilet & Shower Rooms.....	4-38

Section 4

Guide Plates, continued



Page

Soiled Areas

Automatic Cart Wash.....4-44
 Detergent & Water Treatment
 Room.....4-48
 Ante-Room.....4-52
 Soiled Receiving and Decontamination
 Area.....4-56
 Manual Equipment Wash.....4-64
 Endoscope Processing/High Level
 Disinfection.....4-68
 Scope Storage.....4-72
 Decontamination/Ante-Room/
 PPE/Gowning.....4-76
 Locker Rooms.....4-80
 Toilet & Shower Rooms.....4-84

Clean Areas

EtO Sterilizer/Aerator Room.....4-90
 Preparation, Assembly, & Sterilization
 Area.....4-96

Storage Areas

Ante-Room (Dispatch Area).....4-102
 Clean Receiving and Breakout.....4-106
 Bulk Storage Area.....4-112
 Dispatch Area.....4-116
 Equipment Storage and Testing
 Area.....4-122
 Sterile & Non-Sterile Storage Area
 (Surgery).....4-126
 Sterile & Non-Sterile Storage Area
 (Nursing Units).....4-130

Introduction

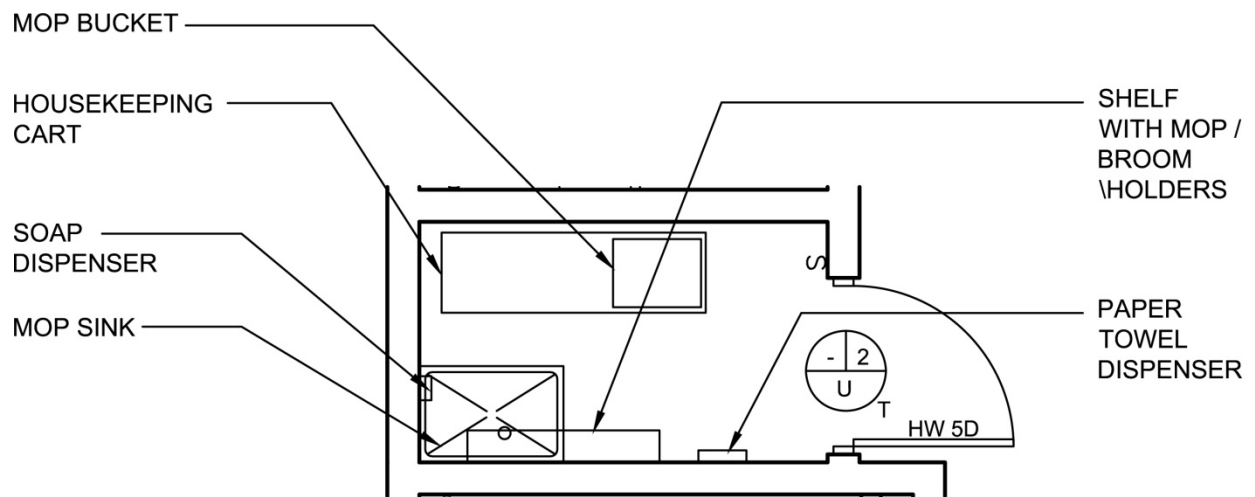
The Design Guide Plates included with this publication are intended as general representations of typical furniture, equipment, functional and personnel space needs. The Design Guide Plates were developed as a design tool to assist the Project Team in understanding the choices to be made during design, and to assist designers in understanding VA's functional requirements for the Supply Processing & Distribution Department. The Guide Plates are not intended to be project specific and are not meant to limit design opportunities.

While plates are provided for a majority of spaces required in the Supply, Processing & Distribution Department, it is not possible to foresee all possible variations or future requirements. The project-specific space program shall be used as the basis for individual project design.

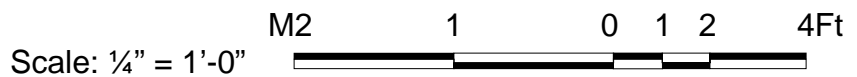
In all cases the Guide Plates must be reviewed against project criteria and any special requirements. Users shall refer to other VA criteria and standards (listed in Section 1) when information is either too detailed or too broad to be included in the Guide Plates. Equipment requirements and technologies are continually evolving. Equipment manufacturers shall be consulted for actual dimensions and utility requirements.

See Section 5 for a cross reference to the Room Names and SEPS designations used in Chapter 285 of the Space Criteria.

Housekeeping Aides Closet (HAC) Decon & Clean Areas (JANC1)
 Floor Plan

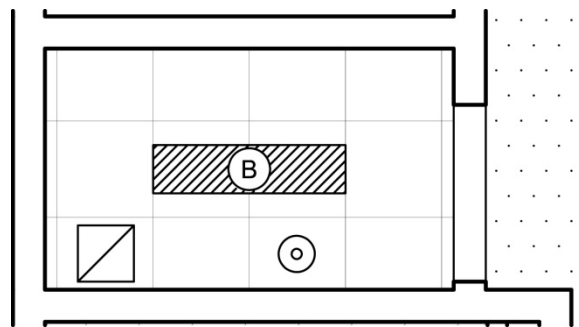


40 NSF / 3.7NSM



NOTE: Guide plates are graphical representations of selected room types, illustrating the integration of space, components, systems, and equipment. They provide typical configurations and general technical guidance, and are not intended to be project specific. Specific infrastructure design requirements are contained in VA Design Manuals and Space Planning Criteria located in the VA Technical Information Library.

Housekeeping Aides Closet (HAC) Decon & Clean Areas (JANC1)
Reflected Ceiling Plan



40 NSF / 3.7 NSM



NOTE: Guide plates are graphical representations of selected room types, illustrating the integration of space, components, systems, and equipment. They provide typical configurations and general technical guidance, and are not intended to be project specific. Specific infrastructure design requirements are contained in VA Design Manuals and Space Planning Criteria located in the VA Technical Information Library.

Housekeeping Aides Closet (HAC) Decon & Clean Areas (JANC1)

Design Standards

ARCHITECTURAL

Ceiling:	AT(SP)
Ceiling Height:	9'-0" (2700 mm)
Wall Finish:	GWB (SC)
Wainscot:	CT4 4'-0"
Base:	PT/QT4
Floor Finish:	PT/QT
Slab Depression:	--
Sound Protection:	--
Notes:	--

SPECIAL EQUIPMENT

	--
--	----

LIGHTING

General:	20 FC – 1.5W/SF (MIN)
Special:	--
Notes:	

- 1) Fixture B: 1'x4' (300 mm x 1200 mm) recessed, flange mounted fluorescent light fixture, UL listed for wet location, prismatic lens with gasketing, w/ F32T8 lamps 3500•K, CRI=70 (minimum).
- 2) The foot-candle level is average maintained.
- 3) Exact quantity, location, and lamping of light fixtures shall be chosen to meet the foot-candle requirement.

POWER

General:	As Shown
Emergency:	As Shown
Notes:	--

COMMUNICATION/SPECIAL SYSTEMS

Data:	--
Telephone:	--
Intercom:	--
Nurse Call:	--
Public Address:	--
Radio/Entertainment:	--
MATV:	--
CCTV:	--
MID:	--
Security/Duress:	--
VTEL:	--
VA Satellite TV:	--
Notes:	--

HEATING, VENTILATING AND AIR CONDITIONING

Indoor Design Conditions:	None
Minimum Total Air Changes per Hour:	10
Room Air Exhaust Required:	Yes, 100%
Special Exhaust or General Exhaust:	General Exhaust
Room Air Return Permitted:	No
Room Air Balance:	Double Negative (--)

PLUMBING AND MEDICAL GASES

Cold Water:	Yes
Hot Water:	Yes
Laboratory Air:	--
Laboratory Vacuum:	--
Sanitary Drain:	Yes
Reagent Grade Water:	--
Medical Air:	--
Medical Vacuum:	--
Oxygen:	--
Notes:	--

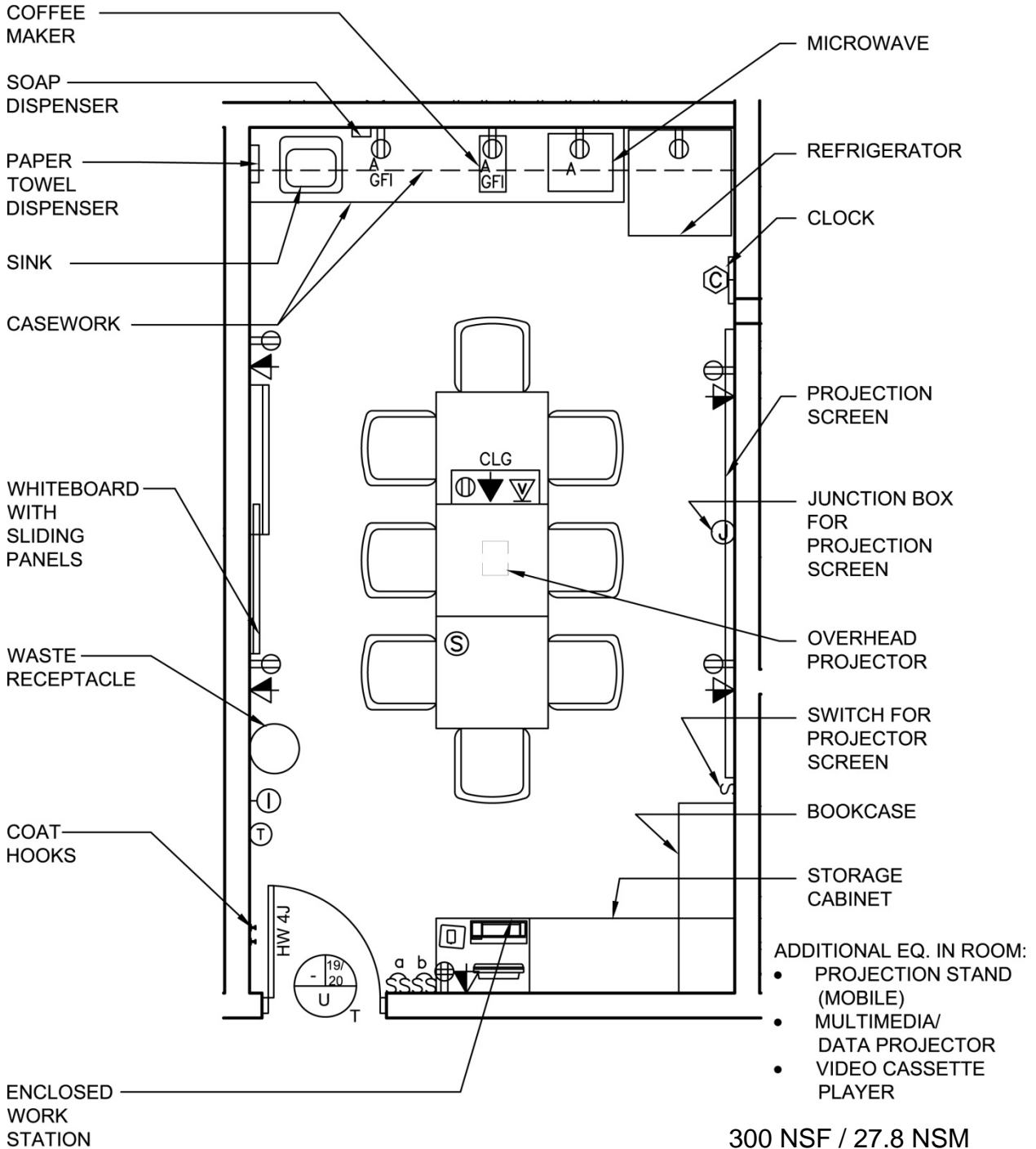
Housekeeping Aides Closet (HAC) Decon & Clean Areas (JANC1)

Equipment List

JSN	SYMBOL	QTY	AI	DESCRIPTION
A5075		1	VV	<u>Dispenser, Soap, Disposable</u> Disposable soap dispenser. One-handed dispensing operation. Designed to accommodate disposable soap cartridge and valve.
A5080		1	CC	<u>Dispenser, Paper Towel, Stainless Steel, Surface Mounted</u> A surface mounted, satin finish stainless steel, single-fold, paper towel dispenser. Dispenser features: tumbler lock; front hinged at bottom; and refill indicator slot. Minimum capacity 400 single-fold paper towels. For general purpose use throughout the facility.
A5135		1	CC	<u>Shelf, Utility with Mop/Broom Holders, Stainless Steel, Surface Mounted</u> A surface mounted, satin finish stainless steel, utility shelf with a maximum of 6 mop/broom holders and 5 rag hooks. Utility shelf features: 8" deep shelf; mounting brackets welded to shelf; spring activated rubber cam holders; and drying rod. Unit is available in various widths 30" (minimum, 3 holders and 2 hooks) to 48" (maximum, 6 holders and 5 hooks). For use in janitor closets. Pricing based on a 36" width.
F0500		1	VV	<u>Cart, Janitor's</u> Janitors cart, 38" high X 66" wide X 20" deep with 25 gallon heavy duty collection bag. Accommodations for locking vault and janitorial support items (broom, dust pan, chemicals, mop and mop bucket; not included).
F0505		1	VV	<u>Bucket, Mop, with Wringer, 26 Quart</u> Mobile mop bucket / wringer combination, approximately 35" H x 17" W x 22" D with four 2" casters. Total capacity is 26 quarts. Unit used for general hard surface floor maintenance.
P4700		1	CC	<u>Sink, Mop, Molded Stone, 10x36x24</u> Mop service sink. Also called a mop service basin and a mop receptor. Unit is made of molded stone and is a one piece item. It shall include a service faucet hose, hose bracket and mop hanger. Used in utility rooms for cleaning mops and floor cleaning equipment.

Staff-Conference Room (ZSPD4)

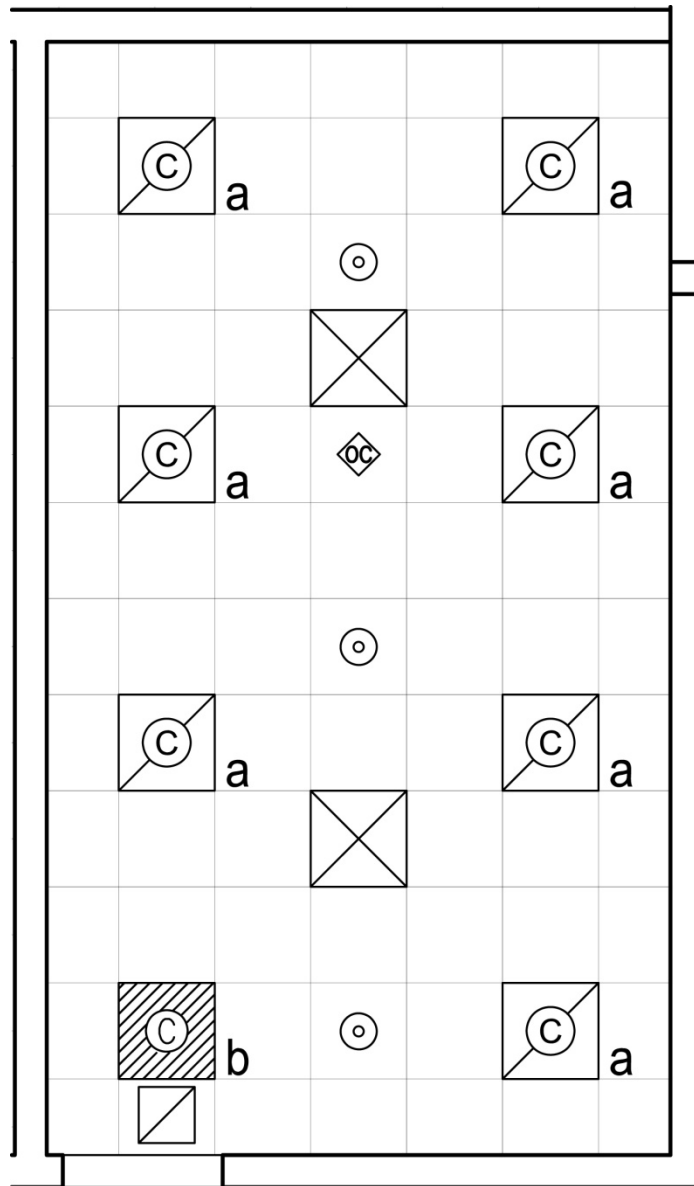
Floor Plan



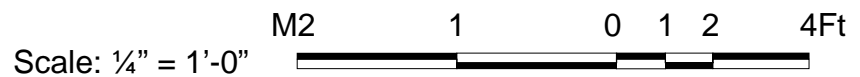
NOTE: Guide plates are graphical representations of selected room types, illustrating the integration of space, components, systems, and equipment. They provide typical configurations and general technical guidance, and are not intended to be project specific. Specific infrastructure design requirements are contained in VA Design Manuals and Space Planning Criteria located in the VA Technical Information Library.

Staff-Conference Room (ZSPD4)

Reflected Ceiling Plan



300 NSF / 27.8 NSM



NOTE: Guide plates are graphical representations of selected room types, illustrating the integration of space, components, systems, and equipment. They provide typical configurations and general technical guidance, and are not intended to be project specific. Specific infrastructure design requirements are contained in VA Design Manuals and Space Planning Criteria located in the VA Technical Information Library.

Staff-Conference Room (ZSPD4)

Design Standards

ARCHITECTURAL

Ceiling:	AT
Ceiling Height:	9'-0" (2700 mm)
Wall Finish:	GWB (SC) 1,2
Wainscot:	--
Base:	RB
Floor Finish:	SVT
Slab Depression:	--
Sound Protection:	--
Notes:	--

SPECIAL EQUIPMENT

	--
--	----

LIGHTING

General:	70 FC – 1.5 W/SF (MIN)
Special:	--
Notes:	

- 1) Fixture C: 2'x2' (600 mm x 600 mm) recessed, grid mounted fluorescent light fixture. direct/indirect w/gasketed acrylic diffuser and lens, w/ F32T8 lamps 3500•K, CRI=70 (minimum).
- 2) The foot-candle level is average maintained.
- 3) Provide ballasts per fixture for desired switching configuration. To provide a uniform lighting level, switch inner lamp(s) on first switch and outer lamps on second switch.
- 4) Exact quantity, location, and lamping of light fixtures shall be chosen to meet the foot-candle requirement.

POWER

General:	As Shown
Emergency:	As Shown
Notes:	--

COMMUNICATION/SPECIAL SYSTEMS

Data:	Yes
Telephone:	Yes
Intercom:	Yes
Nurse Call:	--
Public Address:	Yes
Radio/Entertainment:	Yes
MATV:	--
CCTV:	--
MID:	--
Security/Duress:	--
VTEL:	--
VA Satellite TV:	Yes
Notes:	--

HEATING, VENTILATING AND AIR CONDITIONING

Indoor Design Conditions:	
Dry-Bulb Temperature:	70F - 75F (21C -24C)
Relative Humidity:	30% - 55%
Minimum Total Air Changes per Hour:	6
Room Air Exhaust Required:	Yes, 100%
Special Exhaust or General Exhaust:	General Exhaust
Room Air Return Permitted:	No
Room Air Balance:	Neutral (0)

PLUMBING AND MEDICAL GASES

Cold Water:	Yes
Hot Water:	Yes
Laboratory Air:	--
Laboratory Vacuum:	--
Sanitary Drain:	Yes
Reagent Grade Water:	--
Medical Air:	--
Medical Vacuum:	--
Oxygen:	--
Notes:	--

Staff-Conference Room (ZSPD4)

Equipment List

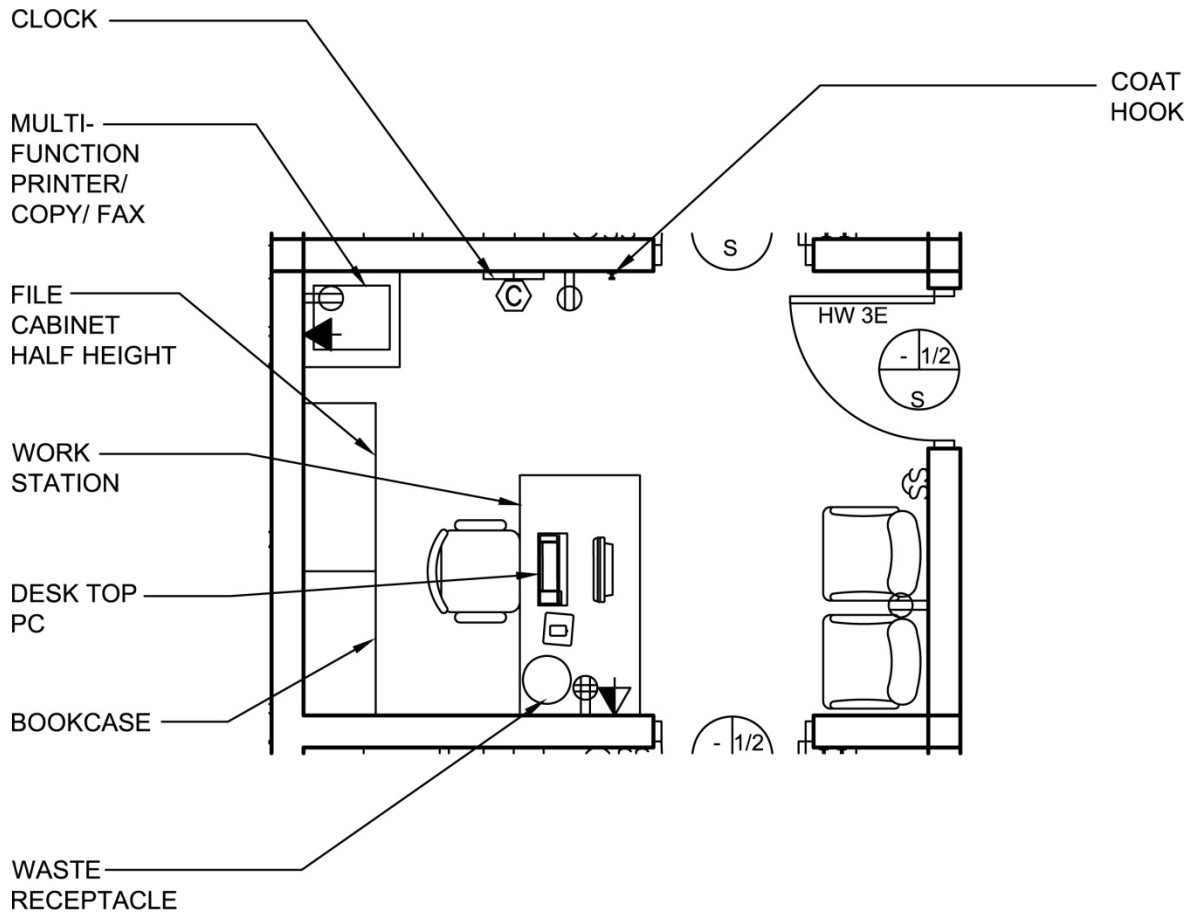
JSN	SYMBOL	QTY	AI	DESCRIPTION
A1010		1	CC	<u>Telephone/Data Outlet (PG-18-1, MCS 27 31 00)</u> Telephone/data outlet outlet location.
A1011		1	CC	<u>Telephone, Desk, 1 Line</u> Telephone, desk, 1 line.
A5145		1	CC	<u>Hook, Garment, Double, Stainless Steel, Surface Mounted</u> A surface mounted, satin finish stainless steel, double garment hook. Equipped with a concealed mounting bracket that is secured to a concealed wall plate. For general purpose use throughout the facility to hang various items of apparel.
A6046		1	VV	<u>Artwork, Decorative, with Frame</u> This JSN is to be used for determining and defining location of decorative artwork.
F0115		1	VV	<u>Bookcase, Open, 5 Shelf</u> Freestanding open shelf bookcase, approximately 82" high X 37" wide X 18" deep with 5 (five) adjustable shelves. Unit can be separate or part of a system with available add-on shelving.
F0220		AR	VV	<u>Chair, Conference</u> Conference chair designed to complement the executive furniture package selected. Foam rubber cushioned seats and backs covered with vinyl. Base with 5 (five) swivel casters.
F0295		AR	VV	<u>Chair, Stacking</u> Stacking chair, approximately 34" H X 21" W X 24" D. May be stacked up to 20 high depending upon the model selected. These chairs are intended primarily as overflow capacity for conference rooms.
F0300		1	VV	<u>Chair, Task, Swivel, with Arms</u> Task chair, approximately 34" H X 26" W X 22" D with adjustable arms and a five caster adjustable swivel base. Seat and back are foam padded and upholstered in vinyl.
F0465		1	VV	<u>Cabinet, Storage, 2 Door, 5 Shelf</u> Storage cabinet, 78" high X 48" wide X 24" deep with two (2) doors and five (5) adjustable shelves.
F0690		1	VV	<u>Workstation, Computer, Enclosed, with Lock</u> Computer operator workstation, approximately 58" high X 36" wide X 25" deep. A fully enclosed workstation for a computer, monitor, printer and supplies. Cabinet has two lockable doors.
F0755		1	VV	<u>Table, Conference</u> Executive conference table. Dimensions are approximately 30" high, 48" wide with lengths varying from 74" to 96". These tables add traditional elegance to any conference room.

F2000		1	VV	<u>Basket, Wastepaper, Round, Metal</u> Round wastepaper basket, approximately 18" high X 16" diameter. This metal unit is used to collect and temporarily store small quantities of paper refuse in patient rooms, administrative areas and nursing stations.
F2225		1	VV	<u>Projector, Overhead</u> Overhead transparency projector with hi-low lamp switch, thermal safety switch and 15 foot power cord. Convenience outlet required at point of use.
F3055		1	VV	<u>Whiteboard, with Sliding Panels</u> Standard installations consist of sliding panels and a fixed back panel with the choice of chalkboard, markerboard, bulletin board, or a combination of these choices.
F3200		1	VV	<u>Clock, Battery, 12" Diameter</u> Clock, 12" diameter. Round surface, easy to read numbers with sweep second hand. Wall mounted unit for use when impractical to install a fully synchronized clock system. Battery operated, (batteries not included).
M0385		1	VV	<u>Projector, Multimedia/Data</u> The projector shall provide computer and video projections. The projector shall be portable and weigh no more than 10 pounds. It shall include a zoom lens and computer and video input ports.
M0400		1	CC	<u>Screen, Projection, 144x144, Remote Control</u> Wall or ceiling mounted, roll-up type screen with remote control. Includes multiple controls to operate the screen from two or more locations, wireless remote control, adjustable preset limit switches, and black borders on all sides. Screen is housed in a solid wood or metal case with removable motor module. For a classroom, conference room, or large auditorium.
M0507		1	VV	<u>Video Teleconferencing System</u> Shall be a video conferencing unit consisting of a camera, microphone, video/audio compression components, a component cart and a 32 inch monitor. It shall provide live audio-visual conferencing capabilities to dispersed geographic sites.
M1801		1	VV	<u>Computer, Microprocessing, with Flat Panel Monitor</u> Desk top microprocessing computer. The unit shall consist of a central processing mini tower, flat panel monitor, keyboard, mouse and speakers. The computer is used throughout the facility to input, manipulate and retrieve information.
		1		<u>Refrigerator/Freezer, Top Mount, 21.7 Cu Ft</u> Refrigerator / Freezer for food storage. Unit shall be frost free with top mounted freezer. Refrigerator shall have adjustable tempered glass shelving for easy cleaning. Dimensions H 67 x W 33 x D 34.

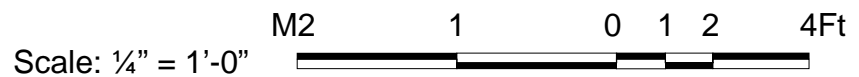
		AR		Handwashing sink
		AR		Microwave
		AR		Coffee Maker
		AR	CC	Receptacle, electrical, duplex, 120 volt (PG-18-1, MCS 26 27 26).
		1	CC	Television outlet (PG-18-1, MCS 27 41 31).
		1	CC	Intercom outlet (PG-18-1, MCS 27 51 33).
		1	CC	Receptacle, electrical, quadruplex, 120 volt, for computer equipment items (PG-18-1, MCS 26 27 26).
		1	CC	Occupancy sensor, ceiling mounted (PG-18-1, MCS 26 09 23).
		1	CC	Public address speaker, ceiling mount (PG-18-1, MCS 27 51 16).
		AR	CC	Receptacle, electrical, duplex, 120 volt, ground fault interrupter (PG-18-1, MCS 26 27 26).

Administration, First Clerk (OFA03)

Floor Plan



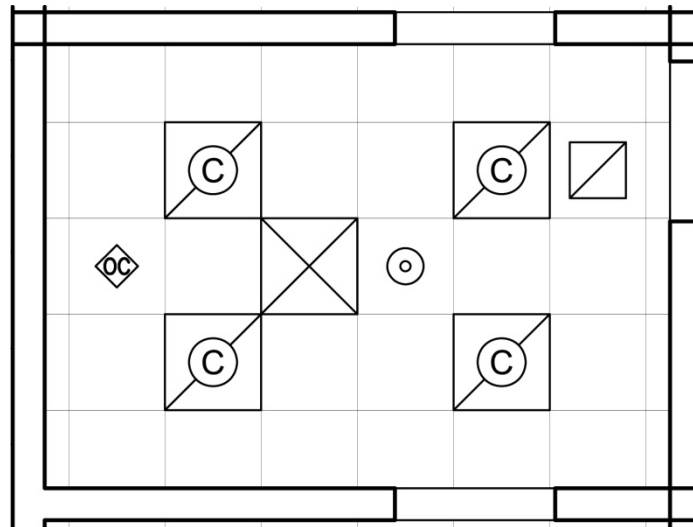
120 NSF / 11.1 NSM



NOTE: Guide plates are graphical representations of selected room types, illustrating the integration of space, components, systems, and equipment. They provide typical configurations and general technical guidance, and are not intended to be project specific. Specific infrastructure design requirements are contained in VA Design Manuals and Space Planning Criteria located in the VA Technical Information Library.

Administration, First Clerk (OFA03)

Reflected Ceiling Plan



120 NSF / 11.1 NSM



NOTE: Guide plates are graphical representations of selected room types, illustrating the integration of space, components, systems, and equipment. They provide typical configurations and general technical guidance, and are not intended to be project specific. Specific infrastructure design requirements are contained in VA Design Manuals and Space Planning Criteria located in the VA Technical Information Library.

Administration, First Clerk (OFA03)

Design Standards

ARCHITECTURAL

Ceiling:	AT
Ceiling Height:	9'-0" (2700 mm)
Wall Finish:	GWB (SC)
Wainscot:	--
Base:	RB
Floor Finish:	CPT/SVT
Slab Depression:	--
Sound Protection:	--
Notes:	--

SPECIAL EQUIPMENT

	--
--	----

LIGHTING

General:	70 FC – 2 W/SF (MIN)
Special:	
Notes:	

- 1) Fixture C: 2'x2' (600 mm x 600 mm) recessed, grid mounted fluorescent light fixture. direct/indirect w/gasketed acrylic diffuser and lens, w/ F32T8 lamps 3500•K, CRI=70 (minimum)
- 2) The foot-candle level is average maintained.
- 3) Provide ballasts per fixture for desired switching configuration. To provide a uniform lighting level, switch inner lamp(s) on first switch and outer lamps on second switch.
- 4) Exact quantity, location, and lamping of light fixtures shall be chosen to meet the foot-candle requirement.

POWER

General:	As Shown
Emergency:	As Shown
Notes:	

- 1) Coordinate location and height of work station receptacles with modular furniture.

COMMUNICATION/SPECIAL SYSTEMS

Data:	Yes
Telephone:	Yes
Intercom:	--
Nurse Call:	--
Public Address:	--
Radio/Entertainment:	--
MATV:	--
CCTV:	--
MID:	--
Security/Duress:	--
VTEL:	--
VA Satellite TV:	--
Notes:	

- 1) Coordinate location and height of workstation telephone/data outlets with modular furniture.

HEATING, VENTILATING AND AIR CONDITIONING

Indoor Design Conditions:	
Dry-Bulb Temperature:	70F - 75F (21C -24C)
Relative Humidity:	30% - 55%
Minimum Total Air Changes per Hour:	4
Room Air Exhaust Required:	Yes, 100%
Special Exhaust or General Exhaust:	General Exhaust
Room Air Return Permitted:	No
Room Air Balance:	Neutral (0)

PLUMBING AND MEDICAL GASES

Cold Water:	--
Hot Water:	--
Laboratory Air:	--
Laboratory Vacuum:	--
Sanitary Drain:	--
Reagent Grade Water:	--
Medical Air:	--
Medical Vacuum:	--
Oxygen:	--
Notes:	--

Administration, First Clerk (OFA03)

Equipment List

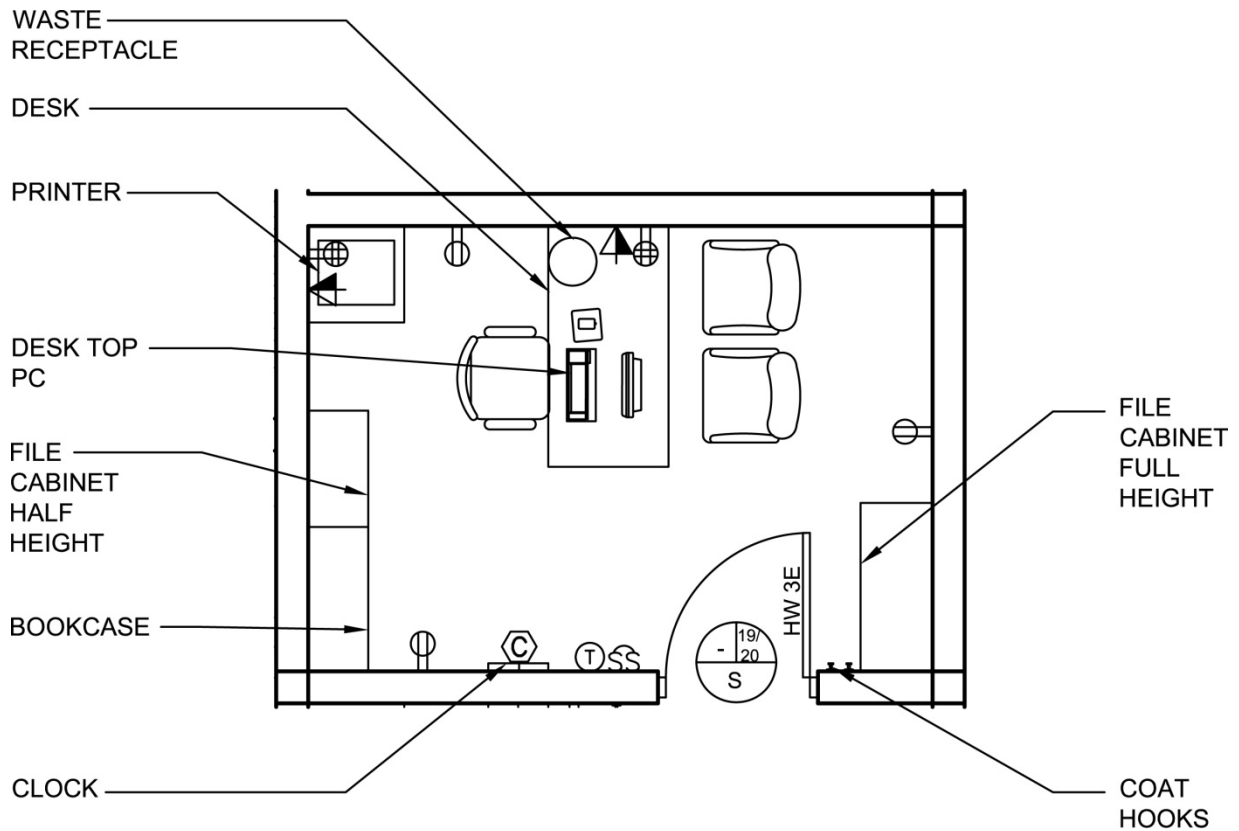
JSN	SYMBOL	QTY	AI	DESCRIPTION
A1010		1	CC	<u>Telephone/Data Combination Outlet (PG-18-1, MCS 27 31 00)</u> Telecommunication outlet location.
A1016		1	CC	<u>Telephone, Desk, with Speaker</u> Telephone, desk, with speaker.
A5145		1	CC	<u>Hook, Garment, Double, Stainless Steel, Surface Mounted</u> A surface mounted, satin finish stainless steel, double garment hook. Equipped with a concealed mounting bracket that is secured to a concealed wall plate. For general purpose use throughout the facility to hang various items of apparel.
E0099		1	VV	<u>Workstation, Modular</u> Refer to plan for layout.
F0110		1	VV	<u>Bookcase, 3 Shelf</u> Freestanding open metal shelf book case, approximately 60" high X 36" wide X 18" deep with three (3) adjustable shelves and four (4) non-marking floor glides.
F0205		1	VV	<u>Chair, Side with Arms</u> Upholstered side chair, 32" high X 21" wide X 23" deep with arms, padded seats and padded backs. Seat height is a minimum of 17". Available with or without sled base.
F0275		1	VV	<u>Chair, Swivel, High Back</u> Highback contemporary swivel chair, 41" high X 23" wide X 23" deep with five (5) caster swivel base and arms. Chair may be used at desks or in conference rooms. Back and seat are foam padded and upholstered with vinyl.
F0420		1	VV	<u>Cabinet, Filing, Lateral, Half Height</u> Half height two (2) or three (3) drawer lateral filing cabinet, 28" high X 42" wide X 18" deep with recessed handles, locking device and drawer label holders. Drawers are adaptable to either letter or legal size materials.
F2000		1	VV	<u>Basket, Wastepaper, Round, Metal</u> Round wastepaper basket, approximately 18" high X 16" diameter. This metal unit is used to collect and temporarily store small quantities of paper refuse in patient rooms, administrative areas and nursing stations.
M1801		1	VV	<u>Computer, Microprocessing, with Flat Panel Monitor</u> Desk top microprocessing computer. The unit shall consist of a central processing mini tower, flat panel monitor, keyboard, mouse and speakers. The computer is used throughout the facility to input, manipulate and retrieve information.

		AR		Device to copy, fax and print.
		1	CC	Receptacle, electrical, quadruplex, for computer equipment items (PG-18-1, MCS 26 27 26).
		AR	CC	Receptacle, electrical, duplex, 120 volt (PG-18-1, MCS 26 27 26).
		1	CC	Computer Data outlet (PG-18-1, MCS 27 31 00).
		1	CC	Occupancy sensor, ceiling mounted (PG-18-1, MCS 26 09 23).

This page intentionally left blank.

Administration, Chief of SPD (OFM01)

Floor Plan



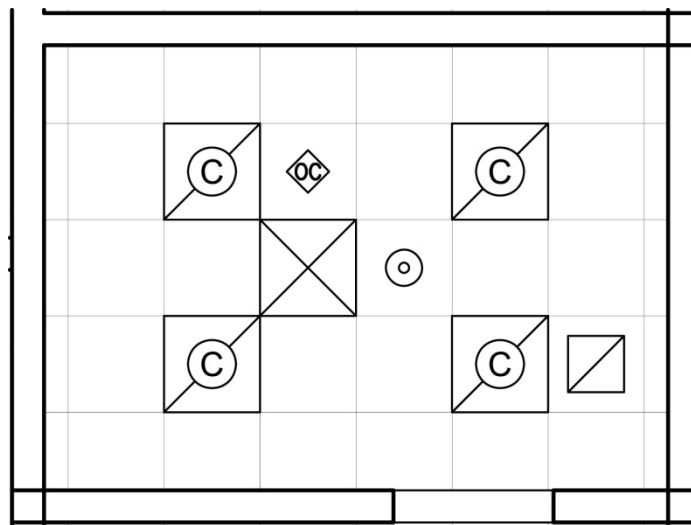
120 NSF / 11.1 NSM



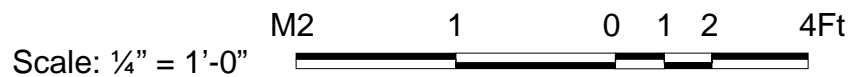
NOTE: Guide plates are graphical representations of selected room types, illustrating the integration of space, components, systems, and equipment. They provide typical configurations and general technical guidance, and are not intended to be project specific. Specific infrastructure design requirements are contained in VA Design Manuals and Space Planning Criteria located in the VA Technical Information Library.

Administration, Chief of SPD (OFM01)

Reflected Ceiling Plan



120 NSF / 11.1 NSM



NOTE: Guide plates are graphical representations of selected room types, illustrating the integration of space, components, systems, and equipment. They provide typical configurations and general technical guidance, and are not intended to be project specific. Specific infrastructure design requirements are contained in VA Design Manuals and Space Planning Criteria located in the VA Technical Information Library.

Administration, Chief of SPD (OFM01)

Design Standards

ARCHITECTURAL

Ceiling:	AT
Ceiling Height:	9'-0" (2700 mm)
Wall Finish:	GWB (SC) 1
Wainscot:	--
Base:	RB
Floor Finish:	CPT/SVT
Slab Depression:	--
Sound Protection:	--
Notes:	--

SPECIAL EQUIPMENT

	--
--	----

LIGHTING

General:	70 FC – 2 W/SF (MIN)
Special:	
Notes:	

- 1) Fixture C: 2'x2' (600 mm x 600 mm) recessed, grid mounted fluorescent light fixture. direct/indirect w/gasketed acrylic diffuser and lens, w/ F32T8 lamps 3500•K, CRI=70 (minimum).
- 2) The foot-candle level is average maintained.
- 3) Provide ballasts per fixture for desired switching configuration. To provide a uniform lighting level, switch inner lamp(s) on first switch and outer lamps on second switch.
- 4) Exact quantity, location, and lamping of light fixtures shall be chosen to meet the foot-candle requirement.

POWER

General:	As Shown
Emergency:	As Shown
Notes:	

- 1) Coordinate location and height of work station receptacles with modular furniture.

COMMUNICATION/SPECIAL SYSTEMS

Data:	Yes
Telephone:	Yes
Intercom:	--
Nurse Call:	--
Public Address:	--
Radio/Entertainment:	--
MATV:	--
CCTV:	--
MID:	--
Security/Duress:	--
VTEL:	--
VA Satellite TV:	--
Notes:	

- 1) Coordinate location and height of work station telephone/data outlets with modular furniture.

HEATING, VENTILATING AND AIR CONDITIONING

Indoor Design Conditions:	
Dry-Bulb Temperature:	70F – 75F (21C – 24C)
Relative Humidity:	30% - 55%
Minimum Total Air Changes per Hour:	4
Room Air Exhaust Required:	Yes, 100%
Special Exhaust or General Exhaust:	General Exhaust
Room Air Return Permitted:	No
Room Air Balance:	Neutral (0)

PLUMBING AND MEDICAL GASES

Cold Water:	--
Hot Water:	--
Laboratory Air:	--
Laboratory Vacuum:	--
Sanitary Drain:	--
Reagent Grade Water:	--
Medical Air:	--
Medical Vacuum:	--
Oxygen:	--
Notes:	--

Administration, Chief of SPD (OFM01)

Equipment List

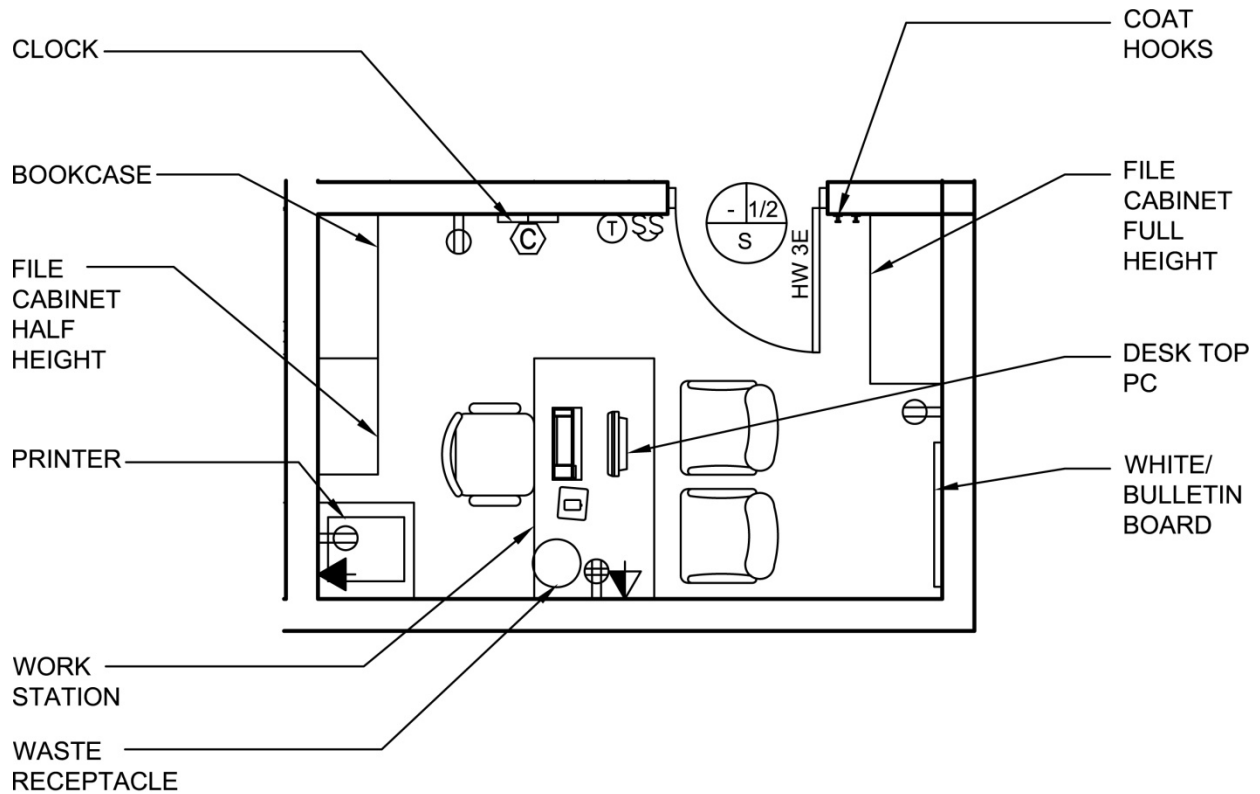
JSN	SYMBOL	QTY	AI	DESCRIPTION
A1010		1	CC	<u>Telephone/Data Combination Outlet (PG-18-1, MCS 27 31 00)</u> Telecommunication outlet location.
A1016		1	CC	<u>Telephone, Desk, with Speaker</u> Telephone, desk, with speaker.
A5145		1	CC	<u>Hook, Garment, Double, Stainless Steel, Surface Mounted</u> A surface mounted, satin finish stainless steel, double garment hook. Equipped with a concealed mounting bracket that is secured to a concealed wall plate. For general purpose use throughout the facility to hang various items of apparel.
A5185		1	VV	<u>Track, Drapery, Ceiling/Wall Mounted, Single Channel Cord</u> Ceiling or wall mounted single channel cord drapery track. Adjustable with mounted brackets and slides. Dimensions and shape as required. Unit consists of a thick extruded aluminum track. Equipped with self-lubricating carriers, beaded drop chain, hooks, removable end caps, and curtain. Designed to be suspended around patient areas where privacy is needed. Price listed is per foot of the track, curtains to be priced per quote.
A6305		1	VV	<u>Drapes, Pair</u> This JSN is to be used for determining and defining the location of drapes. Fabric to be flame retardant, variable colors and patterns with backing. Price based on a pair of drapes for a window approximately 36" W X 60" H.
E0078		1	VV	<u>Workstation, Modular</u> Refer to plan for layout.
F0110		1	VV	<u>Bookcase, 3 Shelf</u> Freestanding open metal shelf book case, approximately 60" high X 36" wide X 18" deep with three (3) adjustable shelves and four (4) non-marking floor glides.
F0205		1	VV	<u>Chair, Side with Arms</u> Upholstered side chair, 32" high X 21" wide X 23" deep with arms, padded seats and padded backs. Seat height is a minimum of 17". Available with or without sled base.
F0275		1	VV	<u>Chair, Swivel, High Back</u> Highback contemporary swivel chair, 41" high X 23" wide X 23" deep with five (5) caster swivel base and arms. Chair may be used at desks or in conference rooms. Back and seat are foam padded and upholstered with vinyl.
F0405		1	VV	<u>Cabinet, Filing, Full Height, 4-5 Drawer</u>

				Four (4) or five (5) drawer letter size, vertical filing cabinet, 53" high X 15" wide X 29" deep with locking device. Each drawer has label holder, handle and roller cradle.
F0420		1	VV	<u>Cabinet, Filing, Lateral, Half Height</u> Half height two (2) or three (3) drawer lateral filing cabinet, 28" high X 42" wide X 18" deep with recessed handles, locking device and drawer label holders. Drawers are adaptable to either letter or legal size materials.
F0635		1	VV	<u>Desk, Double Pedestal</u> Double pedestal flat top desk, 30" high X 60" wide X 30" deep with center pencil drawer, choices of combinations of file and box drawers, floor glides and modesty panel.
F2000		1	VV	<u>Basket, Wastepaper, Round, Metal</u> Round wastepaper basket, approximately 18" high X 16" diameter. This metal unit is used to collect and temporarily store small quantities of paper refuse in patient rooms, administrative areas and nursing stations.
F3050		1	CC	<u>Whiteboard, Dry Erase</u> Whiteboard unit, approximately 36" H x 48" W consisting of a white porcelain enamel writing surface with an attached chalk tray. Magnetic surface available. Image can be easily removed with a standard chalkboard eraser. For use with water color pens. Unit is ready to hang.
F3200		1	VV	<u>Clock, Battery, 12" Diameter</u> Clock, 12" diameter. Round surface, easy to read numbers with sweep second hand. Wall mounted unit for use when impractical to install a fully synchronized clock system. Battery operated, (batteries not included).
M1801		1	VV	<u>Computer, Microprocessing, with Flat Panel Monitor</u> Desk top microprocessing computer. The unit shall consist of a central processing mini tower, flat panel monitor, keyboard, mouse and speakers. The computer is used throughout the facility to input, manipulate and retrieve information.
M1825		1	VV	<u>Printer, Computer</u> High resolution computer printer with a variety of type styles and sheet/envelope feeder trays. Database information reflects network ready, medium duty office style laser printers. Other types of printers (bubble jet, dot matrix, line or plotter) as well as light or heavy use capabilities are available.
		1	CC	Receptacle, electrical, quadruplex, for computer equipment items (PG-18-1, MCS 26 27 26).
		AR	CC	Receptacle, electrical, duplex, 120 volt (PG-18-1, MCS 26 27 26).
		1	CC	Computer Data outlet (PG-18-1, MCS 27 31 00).
		1	CC	Occupancy sensor, ceiling mounted (PG-18-1, MCS

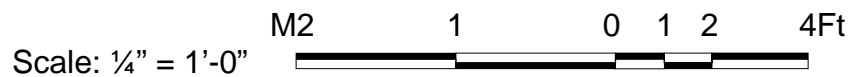
				26 09 23).
--	--	--	--	------------

Administration, Assistant Chief of SPD (OFA01)

Floor Plan



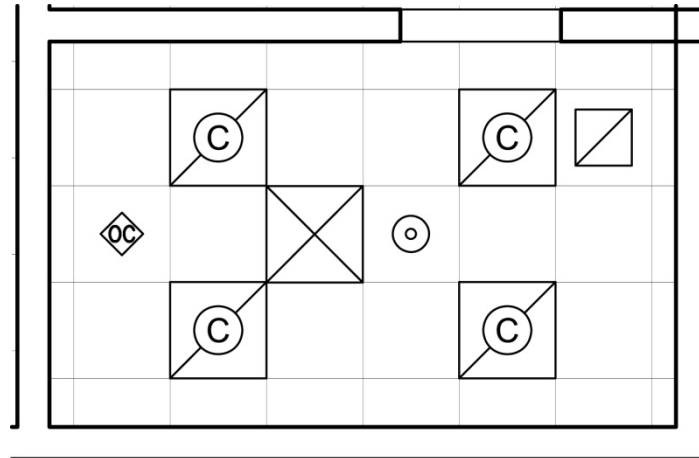
100 NSF / 9.3 NSM



NOTE: Guide plates are graphical representations of selected room types, illustrating the integration of space, components, systems, and equipment. They provide typical configurations and general technical guidance, and are not intended to be project specific. Specific infrastructure design requirements are contained in VA Design Manuals and Space Planning Criteria located in the VA Technical Information Library.

Administration, Assistant Chief of SPD (OFA01)

Reflected Ceiling Plan



100 NSF / 9.3 NSM



NOTE: Guide plates are graphical representations of selected room types, illustrating the integration of space, components, systems, and equipment. They provide typical configurations and general technical guidance, and are not intended to be project specific. Specific infrastructure design requirements are contained in VA Design Manuals and Space Planning Criteria located in the VA Technical Information Library.

Administration, Assistant Chief of SPD (OFA01)

Design Standards

ARCHITECTURAL

Ceiling:	AT
Ceiling Height:	9'-0" (2700 mm)
Wall Finish:	GWB (SC)
Wainscot:	--
Base:	RB
Floor Finish:	CPT/SVT
Slab Depression:	--
Sound Protection:	--
Notes:	--

SPECIAL EQUIPMENT

	--
--	----

LIGHTING

General:	70 FC – 2 W/SF (MIN)
Special:	--
Notes:	

- 1) Fixture C: 2'x2' (600 mm x 600 mm) recessed, grid mounted fluorescent light fixture. direct/indirect w/gasketed acrylic diffuser and lens, w/ F32T8 lamps 3500•K, CRI=70 (minimum).
- 2) The foot-candle level is average maintained.
- 3) Provide ballasts per fixture for desired switching configuration. To provide a uniform lighting level, switch inner lamp(s) on first switch and outer lamps on second switch.
- 4) Exact quantity, location, and lamping of light fixtures shall be chosen to meet the foot-candle requirement.

POWER

General:	Receptacles
Emergency:	As Shown
Notes:	

- 1) Coordinate location and height of work station receptacles with modular furniture.

COMMUNICATION/SPECIAL SYSTEMS

Data:	Yes
Telephone:	Yes
Intercom:	--
Nurse Call:	--
Public Address:	--
Radio/Entertainment:	--
MATV:	--
CCTV:	--
MID:	--
Security/Duress:	--
VTEL:	--
VA Satellite TV:	--
Notes:	

- 1) Coordinate location and height of work station telephone/data outlets with modular furniture.

HEATING, VENTILATING AND AIR CONDITIONING

Indoor Design Conditions:	
Dry-Bulb Temperature:	70F – 75F (21C – 24C)
Relative Humidity:	30% - 55%
Minimum Total Air Changes per Hour:	4
Room Air Exhaust Required:	Yes, 100%
Special Exhaust or General Exhaust:	General Exhaust
Room Air Return Permitted:	No
Room Air Balance:	Neutral (0)

PLUMBING AND MEDICAL GASES

Cold Water:	--
Hot Water:	--
Laboratory Air:	--
Laboratory Vacuum:	--
Sanitary Drain:	--
Reagent Grade Water:	--
Medical Air:	--
Medical Vacuum:	--
Oxygen:	--
Notes:	--

Administration, Assistant Chief of SPD (OFA01)

Equipment List

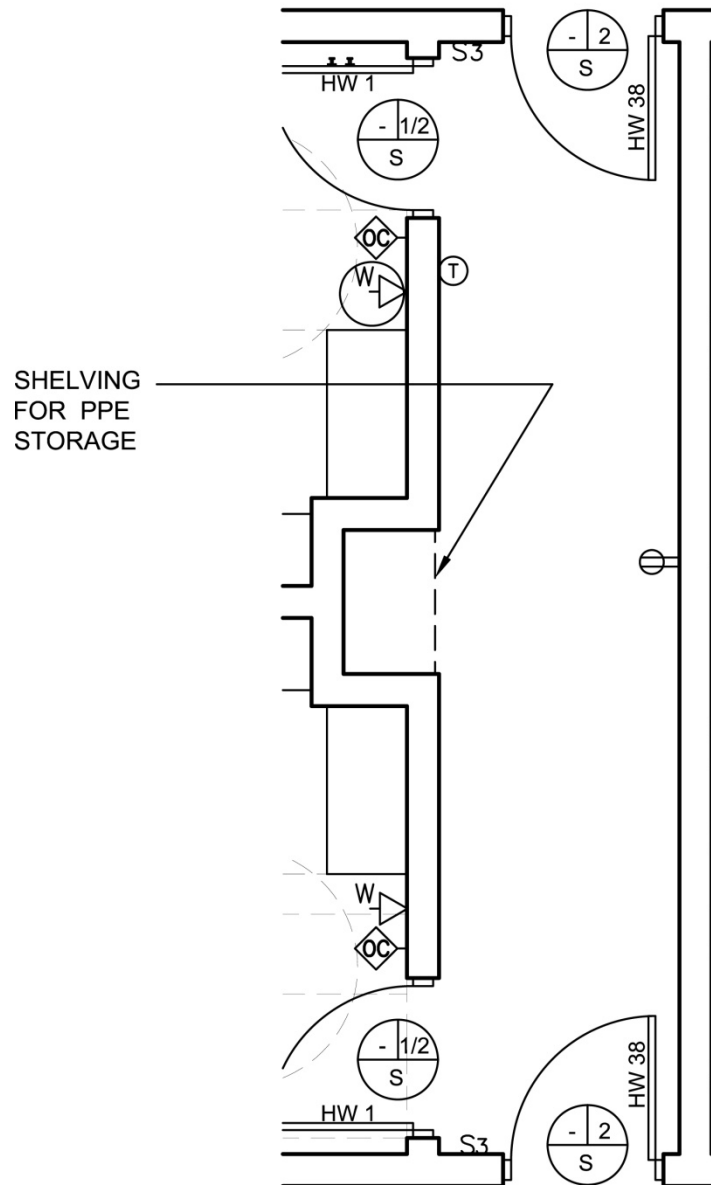
JSN	SYMBOL	QTY	AI	DESCRIPTION
A1010		1	CC	<u>Telephone/Data Combination Outlet (PG-18-1, MCS 27 31 00)</u> Telephone/data outlet location.
A1016		1	CC	<u>Telephone, Desk, with Speaker</u> Telephone, desk, with speaker.
A5145		1	CC	<u>Hook, Garment, Double, Stainless Steel, Surface Mounted</u> A surface mounted, satin finish stainless steel, double garment hook. Equipped with a concealed mounting bracket that is secured to a concealed wall plate. For general purpose use throughout the facility to hang various items of apparel.
A5185		1	VV	<u>Track, Drapery, Ceiling/Wall Mounted, Single Channel Cord</u> Supply drapery track only if exterior window is present. Ceiling or wall mounted single channel cord drapery track. Adjustable with mounted brackets and slides. Dimensions and shape as required. Unit consists of a thick extruded aluminum track. Equipped with self-lubricating carriers, beaded drop chain, hooks, removable end caps, and curtain. Designed to be suspended around patient areas where privacy is needed. Price listed is per foot of the track, curtains to be priced per quote.
A6305		1	VV	<u>Drapes, Pair</u> Supply drapes only if exterior window is present. This JSN is to be used for determining and defining the location of drapes. Fabric to be flame retardant, variable colors and patterns with backing. Price based on a pair of drapes for a window approximately 36" W X 60" H.
E0078		1	VV	<u>Workstation, Modular</u> Refer to plan for layout.
F0110		1	VV	<u>Bookcase, 3 Shelf</u> Freestanding open metal shelf book case, approximately 60" high X 36" wide X 18" deep with three (3) adjustable shelves and four (4) non-marking floor glides.
F0205		1	VV	<u>Chair, Side with Arms</u> Upholstered side chair, 32" high X 21" wide X 23" deep with arms, padded seats and padded backs. Seat height is a minimum of 17". Available with or without sled base.
F0275		1	VV	<u>Chair, Swivel, High Back</u> Highback contemporary swivel chair, 41" high X 23" wide X 23" deep with five (5) caster swivel base and arms. Chair may be used at desks or in conference rooms. Back and seat are foam padded and

				upholstered with vinyl.
F0420		1	VV	<u>Cabinet, Filing, Lateral, Half Height</u> Half height two (2) or three (3) drawer lateral filing cabinet, 28" high X 42" wide X 18" deep with recessed handles, locking device and drawer label holders. Drawers are adaptable to either letter or legal size materials.
F2000		1	VV	<u>Basket, Wastepaper, Round, Metal</u> Round wastepaper basket, approximately 18" high X 16" diameter. This metal unit is used to collect and temporarily store small quantities of paper refuse in patient rooms, administrative areas and nursing stations.
F3050		1	CC	<u>Whiteboard, Dry Erase</u> Whiteboard unit, approximately 36" H x 48" W consisting of a white porcelain enamel writing surface with an attached chalk tray. Magnetic surface available. Image can be easily removed with a standard chalkboard eraser. For use with water color pens. Unit is ready to hang.
F3200		1	VV	<u>Clock, Battery, 12" Diameter</u> Clock, 12" diameter. Round surface, easy to read numbers with sweep second hand. Wall mounted unit for use when impractical to install a fully synchronized clock system. Battery operated, (batteries not included).
M1801		1	VV	<u>Computer, Microprocessing, with Flat Panel Monitor</u> Desk top microprocessing computer. The unit shall consist of a central processing mini tower, flat panel monitor, keyboard, mouse and speakers. The computer is used throughout the facility to input, manipulate and retrieve information.
M1825		1	VV	<u>Printer, Computer</u> High resolution computer printer with a variety of type styles and sheet/envelope feeder trays. Database information reflects network ready, medium duty office style laser printers. Other types of printers (bubble jet, dot matrix, line or plotter) as well as light or heavy use capabilities are available.
		1	CC	Receptacle, electrical, quadruplex, for computer equipment items (PG-18-1, MCS 26 27 26).
		AR	CC	Receptacle, electrical, duplex, 120 volt (PG-18-1, MCS 26 27 26).
		1	CC	Computer data outlet (PG-18-1, MCS 27 31 00).
		1	CC	Occupancy sensor, ceiling mounted (PG-18-1, MCS 26 09 23).

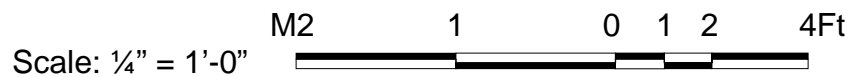
This page intentionally left blank.

Ante-Room (Clean Area) (CSDE4)

Floor Plan



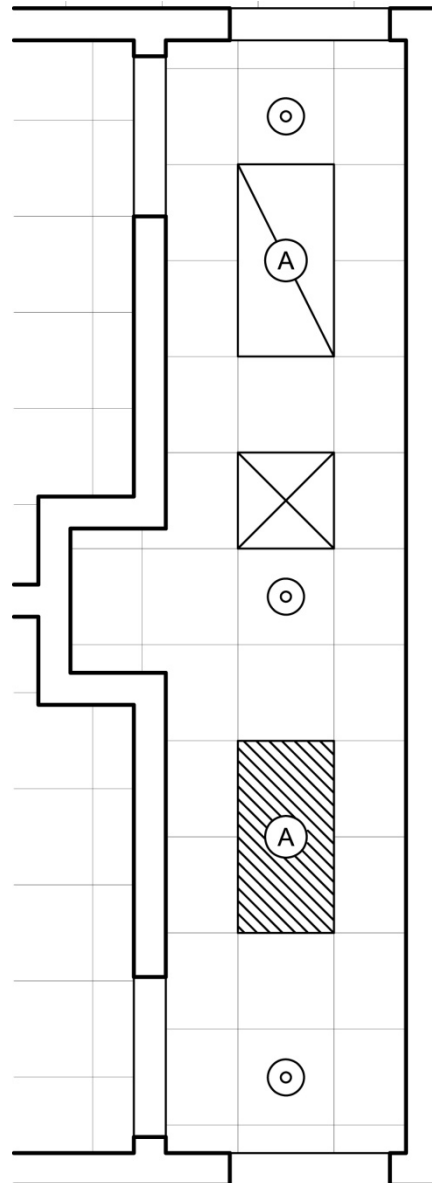
120 NSF / 11.1 NSM



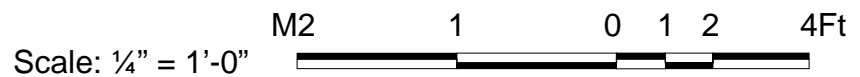
NOTE: Guide plates are graphical representations of selected room types, illustrating the integration of space, components, systems, and equipment. They provide typical configurations and general technical guidance, and are not intended to be project specific. Specific infrastructure design requirements are contained in VA Design Manuals and Space Planning Criteria located in the VA Technical Information Library.

Ante-Room (Clean Area) (CSDE4)

Reflected Ceiling Plan



120 NSF / 11.1 NSM



NOTE: Guide plates are graphical representations of selected room types, illustrating the integration of space, components, systems, and equipment. They provide typical configurations and general technical guidance, and are not intended to be project specific. Specific infrastructure design requirements are contained in VA Design Manuals and Space Planning Criteria located in the VA Technical Information Library.

Ante-Room (Clean Area) (CSDE4)**Design Standards****ARCHITECTURAL**

Ceiling:	AT (SP)
Ceiling Height:	9'-0" (2700 mm)
Wall Finish:	GWB (SC)
Wainscot:	--
Base:	RB
Floor Finish:	VCT
Slab Depression:	--
Sound Protection:	--
Notes:	--

SPECIAL EQUIPMENT

	--
--	----

LIGHTING

General:	30 FC – 1 W/SF (MIN)
Special:	

Notes:

- 1) Fixture A: 2'x4' (600 mm x 1200 mm) recessed, grid mounted fluorescent light fixture, UL listed for wet location, prismatic lens with gasketing, w/ F32T8 lamps 3500•K, CRI=70 (minimum).
- 2) The foot-candle level is average maintained.
- 3) Exact quantity, location, and lamping of light fixtures shall be chosen to meet the foot-candle requirement.

POWER

General:	As Shown
Emergency:	As Shown
Notes:	--

COMMUNICATION/SPECIAL SYSTEMS

Data:	--
Telephone:	--
Intercom:	--
Nurse Call:	--
Public Address:	--
Radio/Entertainment:	--
MATV:	--
CCTV:	--
MID:	--
Security/Duress:	--
VTEL:	--
VA Satellite TV:	--
Notes:	--

HEATING, VENTILATING AND AIR CONDITIONING

Inside Design Conditions:	None
Dry-Bulb Temperatures:	70F – 75F (21C – 24C)
Relative Humidity:	30% - 55%
Minimum Total Air Changes per Hour:	10
Room Air Exhaust Required:	No
Special Exhaust or General Exhaust:	None
Room Air Return Permitted:	No
Room Air Balance:	Positive (+)
Notes:	--

PLUMBING AND MEDICAL GASES

Cold Water:	--
Hot Water:	--
Laboratory Air:	--
Laboratory Vacuum:	--
Sanitary Drain:	--
Reagent Grade Water:	--
Medical Air:	--
Medical Vacuum:	--
Oxygen:	--
Notes:	--

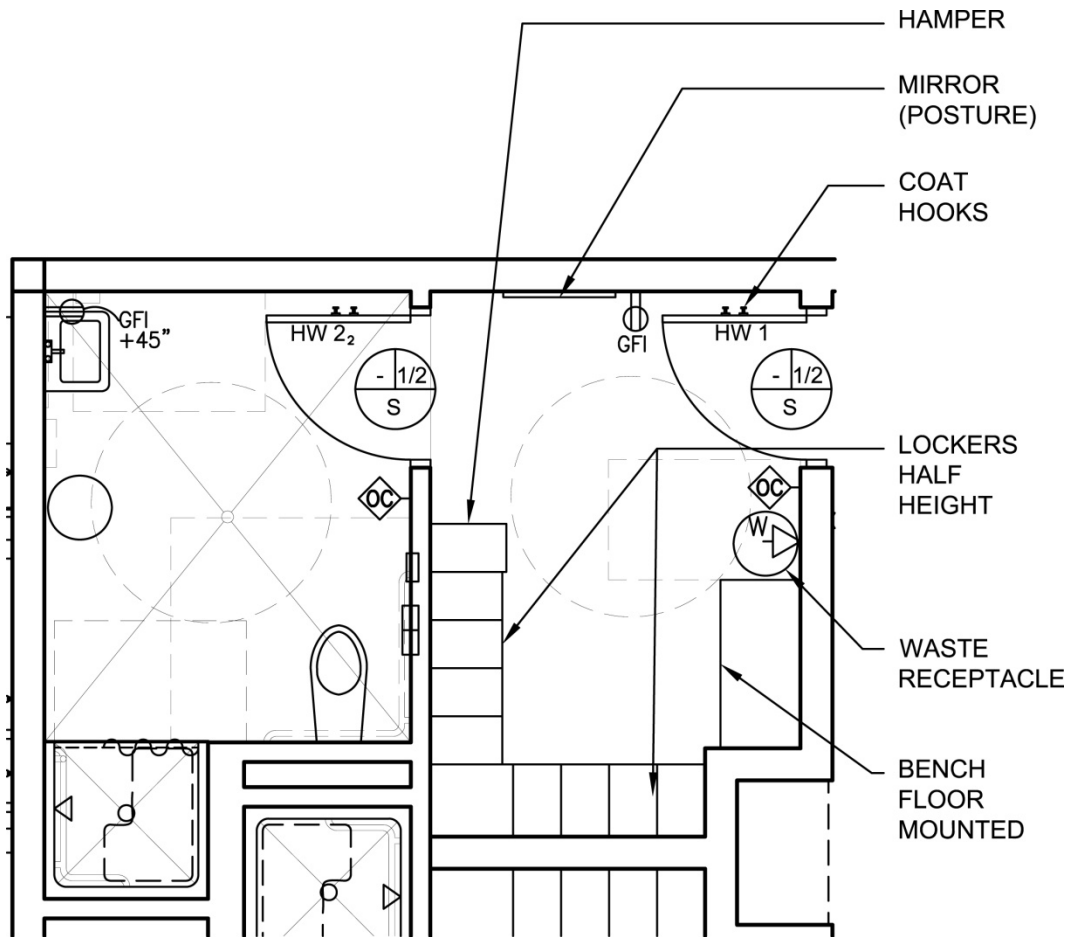
Ante-Room (Clean Area) (CSDE4)

Equipment List

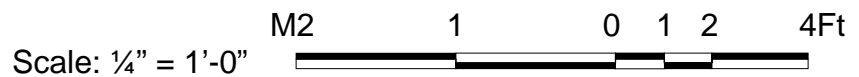
JSN	SYMBOL	QTY	AI	DESCRIPTION
		AR		Shelving, Stainless Steel.
		1	CC	Receptacle, electrical, duplex, 120 volt (PG-18-1, MCS 26 27 26).

Locker Rooms (Clean Area) (LR001)

Floor Plan



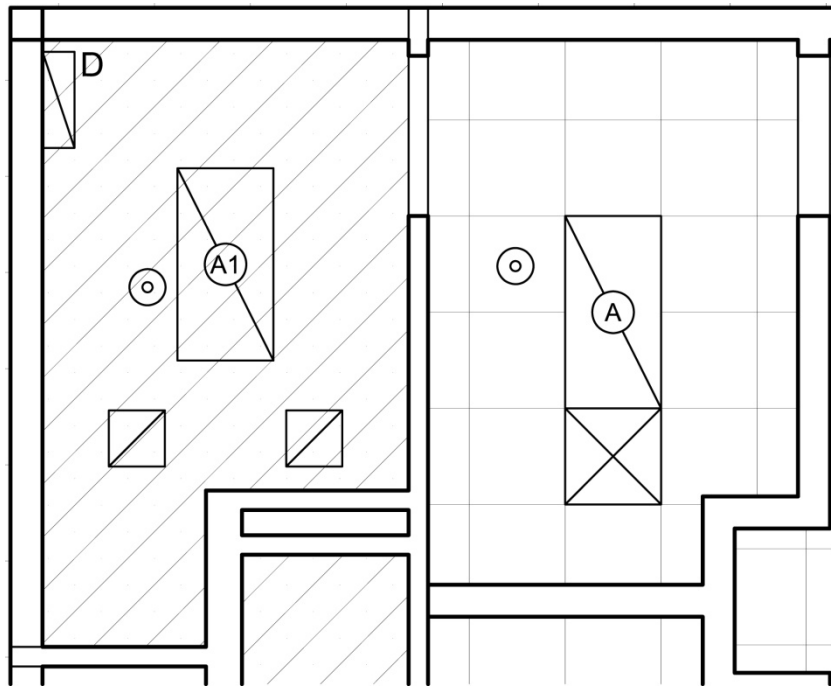
80 NSF / 7.4 NSM



NOTE: Guide plates are graphical representations of selected room types, illustrating the integration of space, components, systems, and equipment. They provide typical configurations and general technical guidance, and are not intended to be project specific. Specific infrastructure design requirements are contained in VA Design Manuals and Space Planning Criteria located in the VA Technical Information Library.

Locker Rooms (Clean Area) (LR001)

Reflected Ceiling Plan



80 NSF / 7.4 NSM



NOTE: Guide plates are graphical representations of selected room types, illustrating the integration of space, components, systems, and equipment. They provide typical configurations and general technical guidance, and are not intended to be project specific. Specific infrastructure design requirements are contained in VA Design Manuals and Space Planning Criteria located in the VA Technical Information Library.

Locker Rooms (Clean Area) (LR001)

Design Standards

ARCHITECTURAL

Ceiling:	AT
Ceiling Height:	9'-0" (2700 mm)
Wall Finish:	GWB
Wainscot:	--
Base:	RB
Floor Finish:	VCT
Slab Depression:	--
Sound Protection:	--

Notes:

- 1) Separate facilities for men & women / enclosed toilet.

SPECIAL EQUIPMENT

--

LIGHTING

General:	20 FC- 1 W/SF
Special:	--

Notes:

- 1) Fixture A: 2'x4' (600 mm x 1200 mm) recessed, grid mounted fluorescent light fixture, UL listed for wet location, prismatic lens with gasketing, w/ F32T8 lamps 3500•K, CRI=70 (minimum).
Fixture D: 24" wall mounted fluorescent fixture mounted 92" (2300mm) AAF unless otherwise noted, prismatic acrylic shield, w/ F17T8 lamps, 3500°K, CRI=70 (minimum).
- 2) The foot-candle level is average maintained.
- 3) Provide ballasts per fixture for desired switching configuration. To provide a uniform lighting level, switch inner lamp(s) on first switch and outer lamps on second switch.
- 4) Exact quantity, location, and lamping of light fixtures shall be chosen to meet the foot-candle requirement.

POWER

General:	As Shown
Emergency:	As Shown

Notes:

--

COMMUNICATION/SPECIAL SYSTEMS

Data:	--
Telephone:	Yes
Intercom:	--
Nurse Call:	--
Public Address:	--
Radio/Entertainment:	--
MATV:	--
CCTV:	--
MID:	--
Security/Duress:	--
VTEL:	--
VA Satellite TV:	--
Notes:	--

HEATING, VENTILATING AND AIR CONDITIONING

Inside Design Conditions:	None
Dry-Bulb Temperatures:	--
Relative Humidity:	--
Minimum Total Air Changes per Hour:	6
Room Air Exhaust Required:	No
Special Exhaust or General Exhaust:	None
Room Air Return Permitted:	No
Room Air Balance:	Negative (-)

Notes:

- 1) Room air used as make-up for exhaust through adjoining toilet and shower.

PLUMBING AND MEDICAL GASES

Cold Water:	Yes
Hot Water:	Yes
Laboratory Air:	--
Laboratory Vacuum:	--
Sanitary Drain:	Yes
Reagent Grade Water:	--
Medical Air:	--
Medical Vacuum:	--
Oxygen:	--
Notes:	--

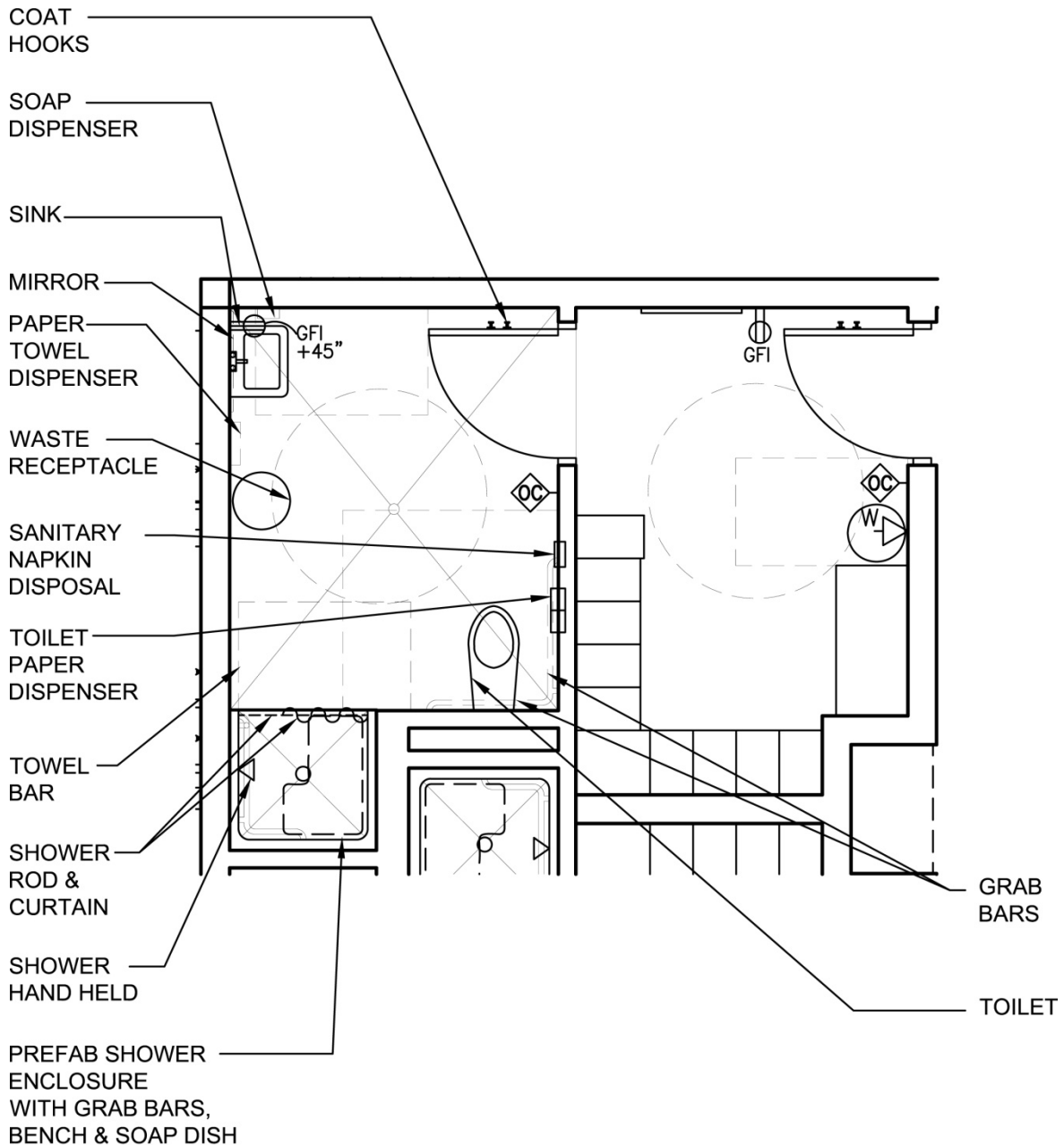
Locker Rooms (Clean Area) (LR001)

Equipment List

JSN	SYMBOL	QTY	AI	DESCRIPTION
A1010		1	CC	<u>Telecommunication Outlet (PG-18-1, MCS 27 31 00)</u> Telecommunication outlet location.
A1012		1	CC	<u>Telephone, Wall Mounted, 1 Line</u> Telephone, wall mounted, 1 line.
A1040		AR	VV	<u>Locker, 2 Person, Side by Side, 72x15x18</u> Two person locker, double tier, 72Hx12Wx18D. This unit includes hooks for coats and hats. Door equipped with safety guard handles. Designed for storage of coats, hats, and other personal belongings. Other width and depths are available.
A1080		1	CC	<u>Mirror, Posture, Wall Mounted</u> Wall mounted posture mirror. Consists of a 1/4" plate glass in a sturdy corrosion resistant frame with water proof back. For educational and therapy programs.
A5020		AR	VV	<u>Bench, Locker Room, Floor Mounted</u> Portable locker room bench. Approximately 1-1/2" thick. Benches shall be laminated hardwood with a moisture resistant sealer or anodized aluminum Units are mounted on strong pedestals.
A5145		1	CC	<u>Hook, Garment, Double, Stainless Steel, Surface Mounted</u> A surface mounted, satin finish stainless steel, double garment hook. Equipped with a concealed mounting bracket that is secured to a concealed wall plate. For general purpose use throughout the facility to hang various items of apparel.
F2000		1	VV	<u>Basket, Wastepaper, Round, Metal</u> Round wastepaper basket, approximately 18" high X 16" diameter. This metal unit is used to collect and temporarily store small quantities of paper refuse in patient rooms, administrative areas and nursing stations.
		AR		Hamper.
		AR		Hand disinfectant.
		1	CC	Receptacle, electrical, duplex, 120 volt, ground fault interrupter (PG-18-1, MCS 26 27 26).
		1	CC	Occupancy sensor, dual technology, wall mounted (PG-18-1, MCS 26 09 23).

Toilet & Shower Rooms (Clean Area) (TLTS1)

Floor Plan



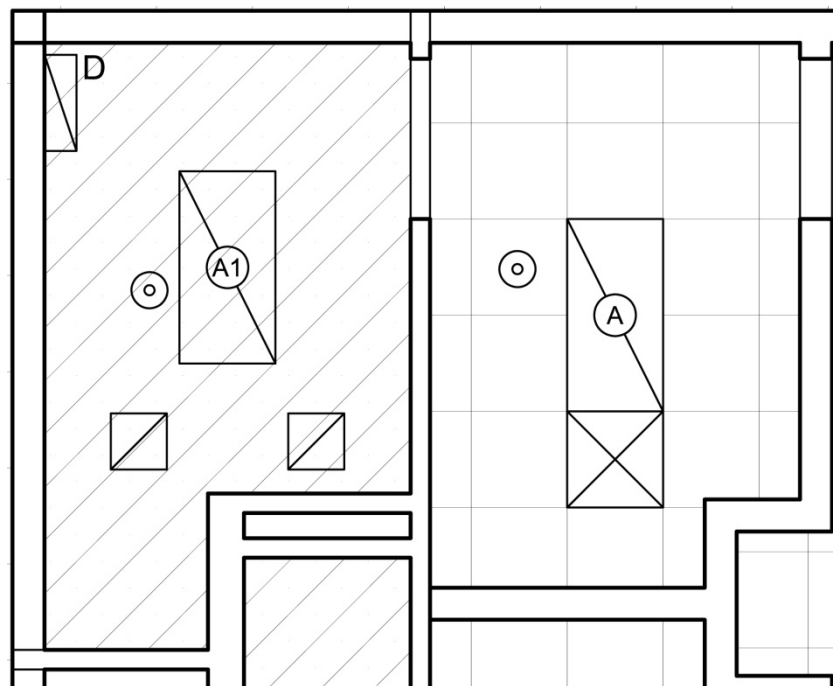
80 NSF / 7.4 NSM



NOTE: Guide plates are graphical representations of selected room types, illustrating the integration of space, components, systems, and equipment. They provide typical configurations and general technical guidance, and are not intended to be project specific. Specific infrastructure design requirements are contained in VA Design Manuals and Space Planning Criteria located in the VA Technical Information Library.

Toilet & Shower Rooms (Clean Area) (TLTS1)

Reflected Ceiling Plan



80 NSF / 7.4 NSM



NOTE: Guide plates are graphical representations of selected room types, illustrating the integration of space, components, systems, and equipment. They provide typical configurations and general technical guidance, and are not intended to be project specific. Specific infrastructure design requirements are contained in VA Design Manuals and Space Planning Criteria located in the VA Technical Information Library.

Toilet & Shower Rooms (Clean Area) (TLTS1)

Design Standards

ARCHITECTURAL

Ceiling:	GWB (SC)
Ceiling Height:	9'-0" (2700 mm)
Wall Finish:	GWB 1 / S 1, 4
Wainscot:	CT1 4'-0"
Base:	PT1
Floor Finish:	PT
Slab Depression:	--
Sound Protection:	--
Notes:	

SPECIAL EQUIPMENT

Toilet Room Accessories:	--
--------------------------	----

LIGHTING

General:	30 FC- 1W/SF (MIN)
Special:	
Notes:	

- 1) Fixture A: 2'x4' (600 mm x 1200 mm) recessed, grid mounted fluorescent light fixture, UL listed for wet location, prismatic lens with gasketing, w/ F32T8 lamps 3500°K, CRI=70 (minimum).
Fixture D: 24" wall mounted fluorescent fixture - mounted over mirror, prismatic acrylic shield, w/ F17T8 lamps, 3500°K, CRI=70 (minimum).
- 2) The foot-candle level is average maintained.
- 3) Provide ballasts per fixture for desired switching configuration. To provide a uniform lighting level, switch inner lamp(s) on first switch and outer lamps on second switch.
- 4) Exact quantity, location, and lamping of light fixtures shall be chosen to meet the foot-candle requirement.

POWER

General:	As Shown
Emergency:	As Shown
Notes:	--

COMMUNICATION/SPECIAL SYSTEMS

Data:	--
Telephone:	--
Intercom:	--
Nurse Call:	Yes
Public Address:	--
Radio/Entertainment:	--
MATV:	--
CCTV:	--
MID:	--
Security/Duress:	--
VTEL:	--
VA Satellite TV:	--
Notes:	--

HEATING, VENTILATING AND AIR CONDITIONING

Inside Design Conditions:	None
Minimum Total Air Changes per Hour:	10
Room Air Exhaust Required:	Yes, 100%
Special Exhaust or General Exhaust:	General Exhaust
Room Air Return Permitted:	No
Room Air Balance:	Double Negative (--)
Notes:	
1) Exhaust, transfer air received from the adjoining locker rooms, outdoors.	

PLUMBING AND MEDICAL GASES

Cold Water:	Yes
Hot Water:	Yes
Laboratory Air:	--
Laboratory Vacuum:	--
Sanitary Drain:	Yes
Reagent Grade Water:	--
Medical Air:	--
Medical Vacuum:	--
Oxygen:	--
Notes:	--

Toilet & Shower Rooms (Clean Area) (TLTS1)

Equipment List

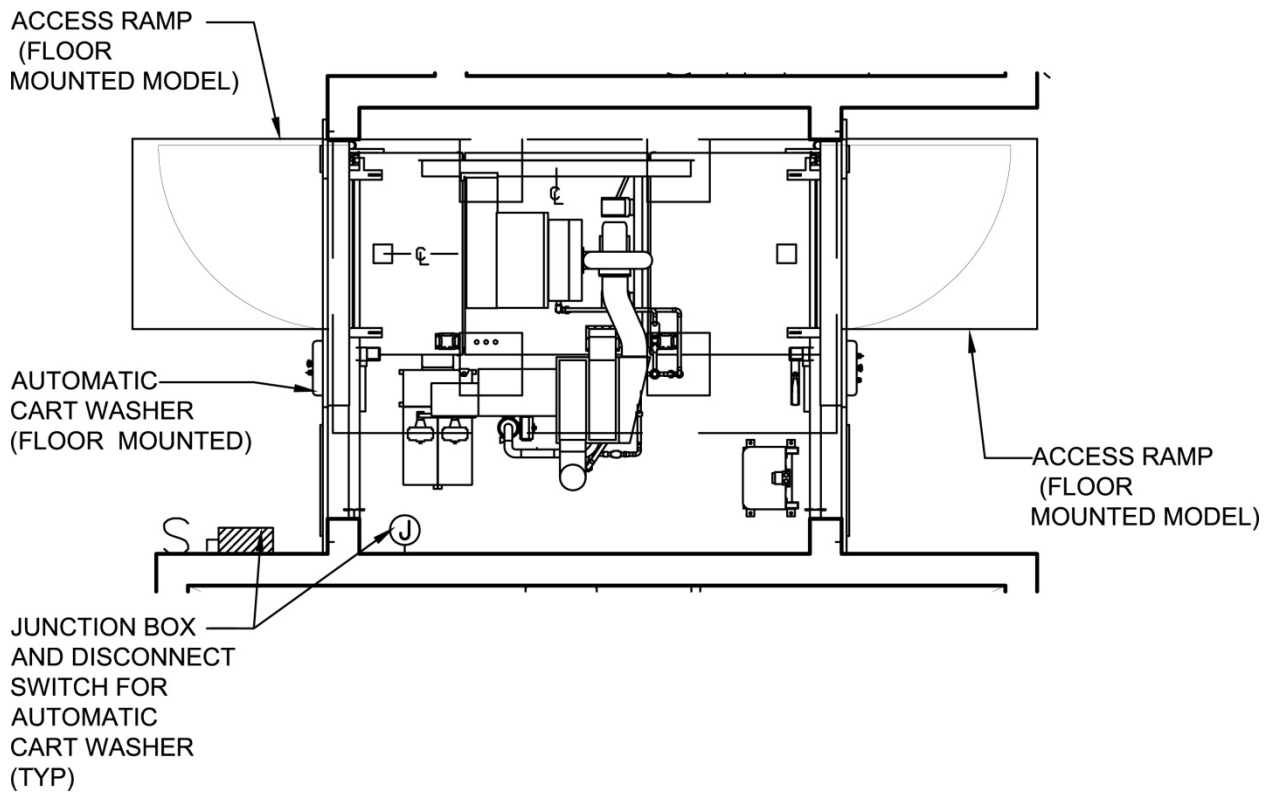
JSN	SYMBOL	QTY	AI	DESCRIPTION
A1066		AR	CC	<u>Mirror, Float Glass, with Stainless Steel Frame</u> A high quality 1/4" polished float glass mirror 36X18, framed in a one-piece, bright polished, stainless steel channel frame with 90° mitered corners. All edges of the mirror are protected by absorbing filler strips. Mirror has a galvanized steel back with integral horizontal hanging brackets and wall hanger for concealed mounting. For mounting above single wall mounted lavatories located in toilet areas, Doctors examination offices, etc. May also be used above double lavatories, either wall or countertop mounted, found in restroom areas.
A5075		AR	VV	<u>Dispenser, Soap, Disposable</u> Disposable soap dispenser. One-handed dispensing operation. Designed to accommodate disposable soap cartridge and valve.
A5080		AR	CC	<u>Dispenser, Paper Towel, Stainless Steel, Surface Mounted</u> A surface mounted, satin finish stainless steel, single-fold, paper towel dispenser. Dispenser features: tumbler lock; front hinged at bottom; and refill indicator slot. Minimum capacity 400 single-fold paper towels. For general purpose use throughout the facility.
A5090		AR	CC	<u>Disposal, Sanitary Napkin, Stainless Steel, Surface Mounted</u> A surface mounted, satin finish stainless steel, sanitary napkin disposal. Disposal features a flip-up cover, secured to the container by a heavy duty stainless steel piano-hinge. Disposal may be secured to wall or toilet partition. For general purpose use in female toilet stalls or rooms and uni-sex toilet rooms.
A5109		AR	CC	<u>Grab Bar, 1-1/4" Dia., SS, 2 Wall, Wheelchair Accessible</u> A 1-1/4" diameter, satin finish stainless steel, peened gripping surface, 2 wall toilet stall/ room, grab bar with concealed mounting flanges. Snap over flanges are provided to conceal mounting screws. A selection of mounting kits and concealed anchor devices are available from the manufacturers for different types of installations. Grab bar shall comply with barrier-free accessibility guidelines for structural strength. For typical water closet applications in toilet stalls and rooms where ADA (American's With Disabilities Act) requirements must be met.
A5145		AR	CC	<u>Hook, Garment, Double, Stainless Steel, Surface Mounted</u> A surface mounted, satin finish stainless steel, double garment hook. Equipped with a concealed mounting

				bracket that is secured to a concealed wall plate. For general purpose use throughout the facility to hang various items of apparel.
A5200		AR	CC	<u>Dispenser, Toilet Tissue, Stainless Steel, 2-Roll, Surface Mounted</u> A concealed surface mounted, double roll, satin finish stainless steel, toilet tissue dispenser. Unit accommodates two standard-core toilet tissue rolls through 5" in diameter. Spindles are chrome plated plastic with a heavy-duty internal spring and turn freely for non-controlled delivery. For general purpose use in restrooms.
F2000		AR	VV	<u>Basket, Wastepaper, Round, Metal</u> Round wastepaper basket, approximately 18" high X 16" diameter. This metal unit is used to collect and temporarily store small quantities of paper refuse in patient rooms, administrative areas and nursing stations.
P9180		AR	CC	<u>Lavatory, Wheelchair, 7x20x27</u> Wheelchair lavatory. Shall be made of vitreous china and accessible to wheelchair bound patients and visitors. Unit is equipped with wrist control handles. Used throughout the facility in handicapped access restrooms.
P9050		AR	CC	<u>Toilet, Wall Hung, Siphon Jet</u> Siphon jet water closet/ toilet. This unit is wall hung with an elongated bowl, top spud flush valve, seat with open front and check hinge, and carrier. Used throughout the health care facility in restrooms.
		AR		Pre-fab shower enclosure.
		1	CC	Receptacle, electrical, duplex, 120V, 20A, ground fault interrupter (PG-18-1, MCS 26 27 26).
		1	CC	Occupancy sensor, dual technology, wall mounted (PG-18-1, MCS 26 09 23).

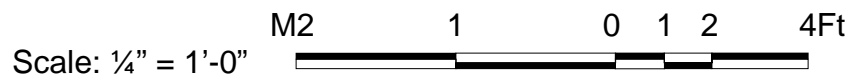
This page intentionally left blank.

Automatic Cart Wash (CWSH2)

Floor Plan



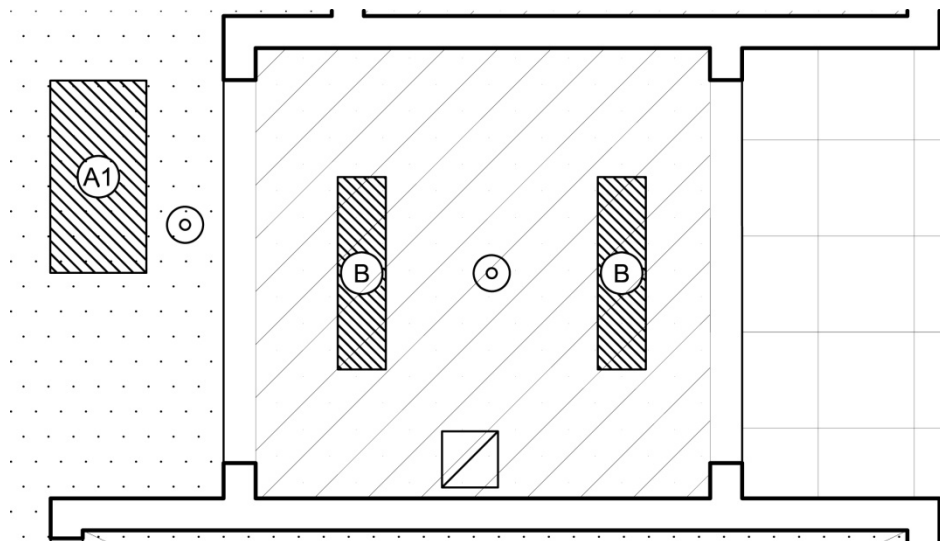
120 NSF / 11.1 NSM



NOTE: Guide plates are graphical representations of selected room types, illustrating the integration of space, components, systems, and equipment. They provide typical configurations and general technical guidance, and are not intended to be project specific. Specific infrastructure design requirements are contained in VA Design Manuals and Space Planning Criteria located in the VA Technical Information Library.

Automatic Cart Wash (CWSH2)

Reflected Ceiling Plan



120 NSF / 11.1 NSM



NOTE: Guide plates are graphical representations of selected room types, illustrating the integration of space, components, systems, and equipment. They provide typical configurations and general technical guidance, and are not intended to be project specific. Specific infrastructure design requirements are contained in VA Design Manuals and Space Planning Criteria located in the VA Technical Information Library.

Automatic Cart Wash (CWSH2)

Design Standards

ARCHITECTURAL

Ceiling:	GWB (SC)
Ceiling Height:	9'-0" (2700 mm)
Wall Finish:	CT4
Wainscot:	--
Base:	RES
Floor Finish:	RES
Slab Depression:	--
Sound Protection:	--
Notes:	

SPECIAL EQUIPMENT

	--
--	----

LIGHTING

General:	30 FC – 1 W/SF (MIN)
Special:	As Shown
Notes:	

- 1) Fixture B: 1'x4' (300 mm x 1200 mm) recessed, flange mounted fluorescent light fixture, UL listed for wet location, prismatic lens with gasketing, w/ F32T8 lamps 3500•K, CRI=70 (minimum).
- 2) The foot-candle level is average maintained.
- 3) Exact quantity, location, and lamping of light fixtures shall be chosen to meet the foot-candle requirement.

POWER

General:	As Shown
Emergency:	All
Notes:	--

COMMUNICATION/SPECIAL SYSTEMS

Data:	--
Telephone:	--
Intercom:	--
Nurse Call:	--
Public Address:	--
Radio/Entertainment:	--
MATV:	--
CCTV:	--
MID:	--
Security/Duress:	--
VTEL:	--
VA Satellite TV:	--
Notes:	--

HEATING, VENTILATING AND AIR CONDITIONING

Inside Design Conditions:	None
Minimum Total Air Changes per Hour:	10
Room Air Exhaust Required:	Yes, 100%
Special Exhaust or General Exhaust:	Special Exhaust ("Wet Exhaust")
Room Air Return Permitted:	No
Room Air Balance:	Negative (-)
Notes:	--

PLUMBING AND MEDICAL GASES

Cold Water:	Yes. Note 1)
Hot Water:	Yes. Note 1)
Laboratory Air:	--
Laboratory Vacuum:	--
Sanitary Drain:	Yes. Note 1)
Reagent Grade Water:	Yes. Note 1)
Medical Air:	--
Medical Vacuum:	--
Oxygen:	--
Notes:	--

- 1) Provide as needed per automatic wash equipment requirements.

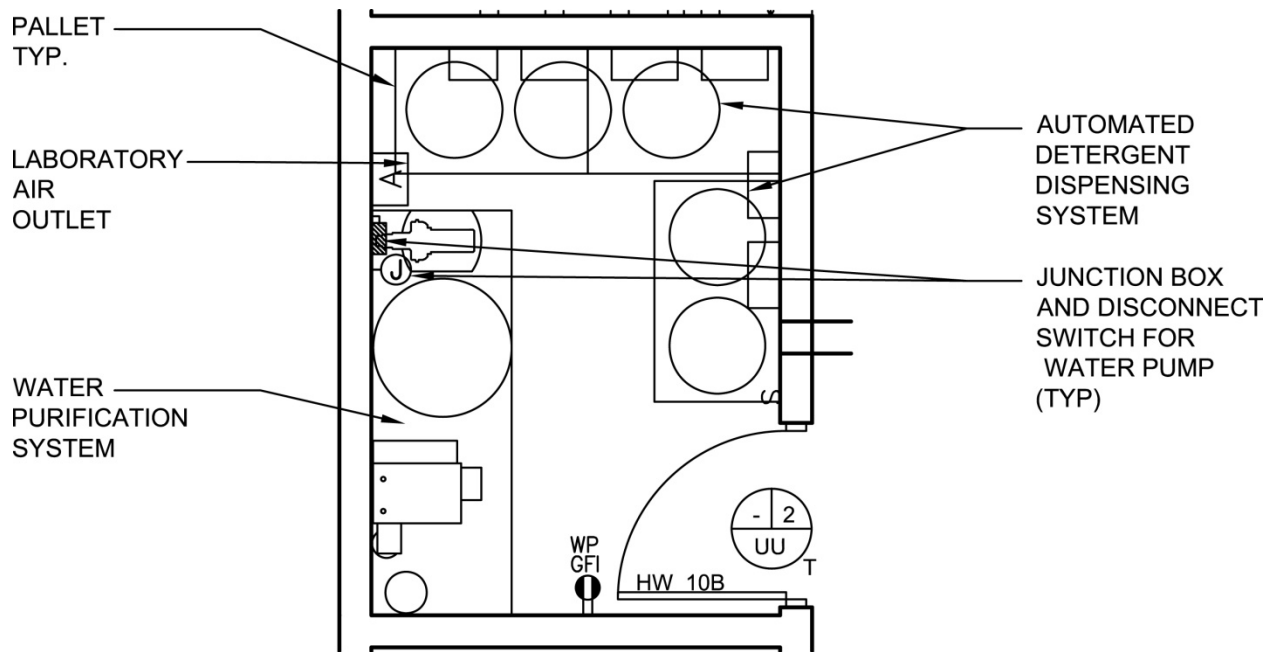
Automatic Cart Wash (CWSH2)

Equipment List

JSN	SYMBOL	QTY	AI	DESCRIPTION
S3185		1	CC	<p><u>Washer, Cart & Utensil, 2 Door, Pit Mounted, Recessed through 2 Walls</u></p> <p>A recessed (through two walls), pit mounted, double door (right or left-hinged, appropriate configuration to be indicated on equipment elevation drawings), cart and utensil washer (minimum chamber load capacity 78X34X76). A microprocessor-based controller monitors and controls system operations and functions. The unit provides: visual and/or audible indication of cycle operation, programmable treatment time and temperatures, and a minimum of three cycles (wash with detergent, rinse, and drying). For use in central processing to clean and decontaminate, carts, patient-care utensils (IV poles, wheelchairs, stretchers, etc.) and other bulk items. Various electrical configurations are available, for pricing 208V, 60HZ, 3-phase is used.</p> <p>NOTE: Cart wash <u>cannot</u> empty into the Prep Room; it must empty into the Clean Sterile Area. The Automatic Cart Wash <u>must</u> have a drying unit.</p>
		AR		Carts for small items (basins, etc.) being processed by the cart washer.
		1	CC	Disconnect Switch (PG-18-1, MCS 26 29 21).
		1	CC	Junction Box (PG-18-1, MCS 26 05 33).

Detergent & Water Treatment Room (LBWA1)

Floor Plan



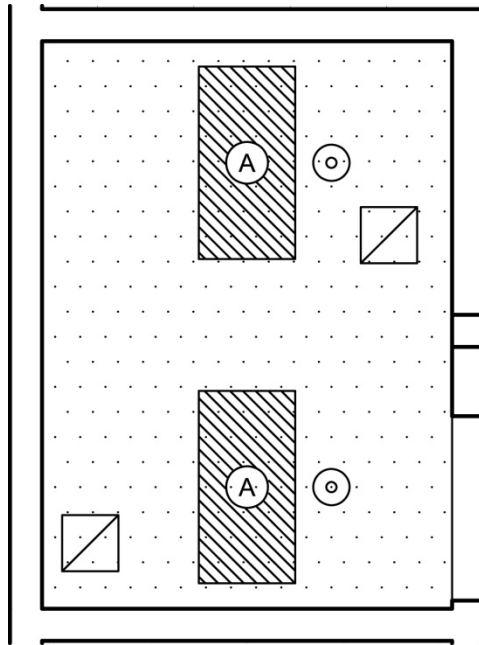
100 NSF / 9.3 NSM



NOTE: Guide plates are graphical representations of selected room types, illustrating the integration of space, components, systems, and equipment. They provide typical configurations and general technical guidance, and are not intended to be project specific. Specific infrastructure design requirements are contained in VA Design Manuals and Space Planning Criteria located in the VA Technical Information Library.

Detergent & Water Treatment Room (LBWA1)

Reflected Ceiling Plan



100 NSF / 9.3 NSM



NOTE: Guide plates are graphical representations of selected room types, illustrating the integration of space, components, systems, and equipment. They provide typical configurations and general technical guidance, and are not intended to be project specific. Specific infrastructure design requirements are contained in VA Design Manuals and Space Planning Criteria located in the VA Technical Information Library.

Detergent & Water Treatment Room (LBWA1)

Design Standards

ARCHITECTURAL

Ceiling:	GWB (SC)
Ceiling Height:	9'-0" (2700 mm)
Wall Finish:	GWB (SC)
Wainscot:	--
Base:	RES
Floor Finish:	RES 3
Slab Depression:	--
Sound Protection:	--
Notes:	--

SPECIAL EQUIPMENT

	--
--	----

LIGHTING

General:	30 FC – 2W/SF (MIN)
Special:	As Shown
Notes:	

- 1) Fixture A1: 2'x4' (600 mm x 1200 mm) recessed, flange mounted fluorescent light fixture, UL listed for wet location, prismatic lens with gasketing, w/ F32T8 lamps 3500•K, CRI=70 (minimum).
- 2) The foot-candle level is average maintained.
- 3) Exact quantity, location, and lamping of light fixtures shall be chosen to meet the foot-candle requirement.

POWER

General:	As Shown
Emergency:	All
Notes:	--

COMMUNICATION/SPECIAL SYSTEMS

Data:	--
Telephone:	--
Intercom:	--
Nurse Call:	--
Public Address:	--
Radio/Entertainment:	--
MATV:	--
CCTV:	--
MID:	--
Security/Duress:	--
VTEL:	--
VA Satellite TV:	--
Notes:	--

HEATING, VENTILATING AND AIR CONDITIONING

Indoor Design Conditions:	None
Minimum Total Air Changes per Hour:	10
Room Air Exhaust Required:	Yes, 100%
Special Exhaust or General Exhaust:	General Exhaust
Room Air Return Permitted:	No
Room Air Balance:	Double Negative (--)

PLUMBING AND MEDICAL GASES

Cold Water:	Yes
Hot Water:	Yes
Non-Patient Medical Air:	Yes
Laboratory Vacuum:	--
Sanitary Drain:	Yes
Reagent Grade Water:	Yes
Medical Air:	--
Medical Vacuum:	--
Oxygen:	--
Notes:	--

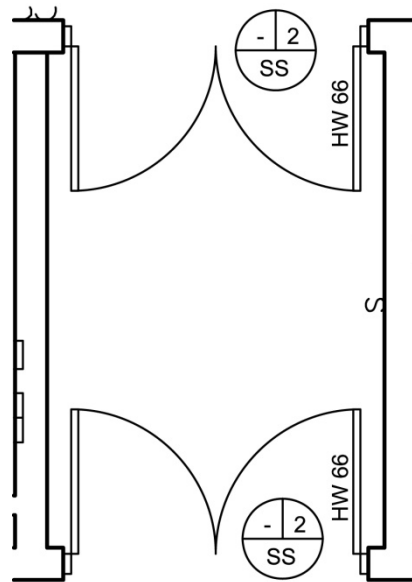
Detergent & Water Treatment Room (LBWA1)

Equipment List


JSN	SYMBOL	QTY	AI	DESCRIPTION
No equipment noted in MLST1691 for this room				
		AR		Automated detergent dispensing units.
		AR		Water purification and water saver system(s).
		1	CC	Receptacle, electrical, duplex, 120 volt, ground fault interrupter (PG-18-1, MCS 26 27 26).
		1	CC	Disconnect Switch (PG-18-1, MCS 26 29 21).
		1	CC	Junction Box (PG-18-1, MCS 26 05 33).

Ante-Room (Soiled Area) (CSDE4)

Floor Plan



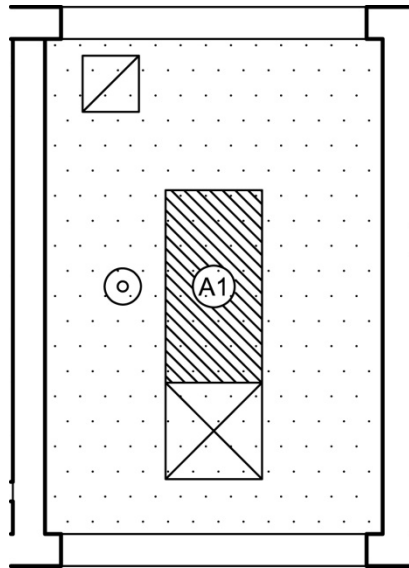
70 NSF / 6.5 NSM

Scale: 1/8" = 1'-0"  M2 1 0 2 4 8Ft

NOTE: Guide plates are graphical representations of selected room types, illustrating the integration of space, components, systems, and equipment. They provide typical configurations and general technical guidance, and are not intended to be project specific. Specific infrastructure design requirements are contained in VA Design Manuals and Space Planning Criteria located in the VA Technical Information Library.

Ante-Room (Soiled Area) (CSDE4)

Reflected Ceiling Plan



70 NSF / 6.5 NSM

M2 1 0 2 4 8Ft

Scale: 1/8" = 1'-0"



NOTE: Guide plates are graphical representations of selected room types, illustrating the integration of space, components, systems, and equipment. They provide typical configurations and general technical guidance, and are not intended to be project specific. Specific infrastructure design requirements are contained in VA Design Manuals and Space Planning Criteria located in the VA Technical Information Library.

Ante-Room (Soiled Area) (CSDE4)

Design Standards

ARCHITECTURAL

Ceiling:	RES-W/GWB(SC)
Ceiling Height:	9'-0" (2700 mm)
Wall Finish:	RES-W/GWB(SC)
Wainscot:	--
Base:	RES
Floor Finish:	RES
Slab Depression:	--
Sound Protection:	--
Notes:	--

SPECIAL EQUIPMENT

--

LIGHTING

General:	30 FC – 1 W/SF (MIN)
Special:	As Shown
Notes:	

- 1) Fixture A1: 2'x4' (600 mm x 1200 mm) recessed, flange mounted fluorescent light fixture, UL listed for wet location, prismatic lens with gasketing, w/ F32T8 lamps 3500•K, CRI=70 (minimum).
- 2) The foot-candle level is average maintained.
- 3) Exact quantity, location, and lamping of light fixtures shall be chosen to meet the foot-candle requirement.

POWER

General:	As Shown
Emergency:	All
Notes:	--

COMMUNICATION/SPECIAL SYSTEMS

Data:	--
Telephone:	--
Intercom:	--
Nurse Call:	--
Public Address:	--
Radio/Entertainment:	--
MATV:	--
CCTV:	--
MID:	--
Security/Duress:	--
VTEL:	--
VA Satellite TV:	--
Notes:	--

HEATING, VENTILATING AND AIR CONDITIONING

Inside Design Conditions:	None
Dry-Bulb Temperature:	--
Relative Humidity:	--
Minimum Total Air Changes per Hour:	--
Room Air Exhaust Required:	No
Special Exhaust or General Exhaust:	None
Room Air Return Permitted:	No
Room Air Balance:	--
Notes:	

PLUMBING AND MEDICAL GASES

Cold Water:	--
Hot Water:	--
Laboratory Air:	--
Laboratory Vacuum:	--
Sanitary Drain:	--
Reagent Grade Water:	--
Medical Air:	--
Medical Vacuum:	--
Oxygen:	--
Notes:	--

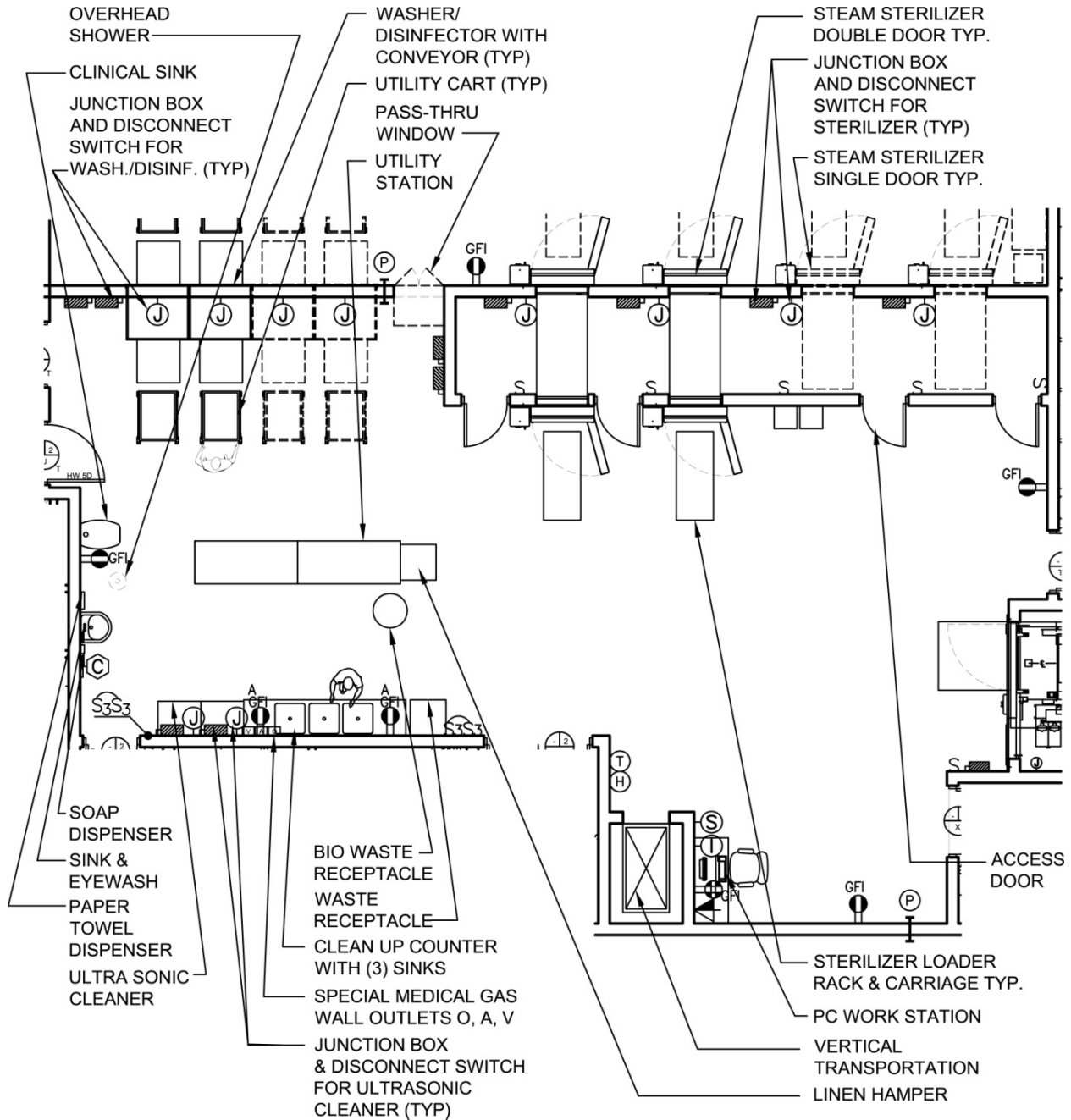
Ante-Room (Soiled Area) (CSDE4)

Equipment List

JSN	SYMBOL	QTY	AI	DESCRIPTION

Soiled Receiving and Decontamination Area (ZSPD1)

Floor Plan



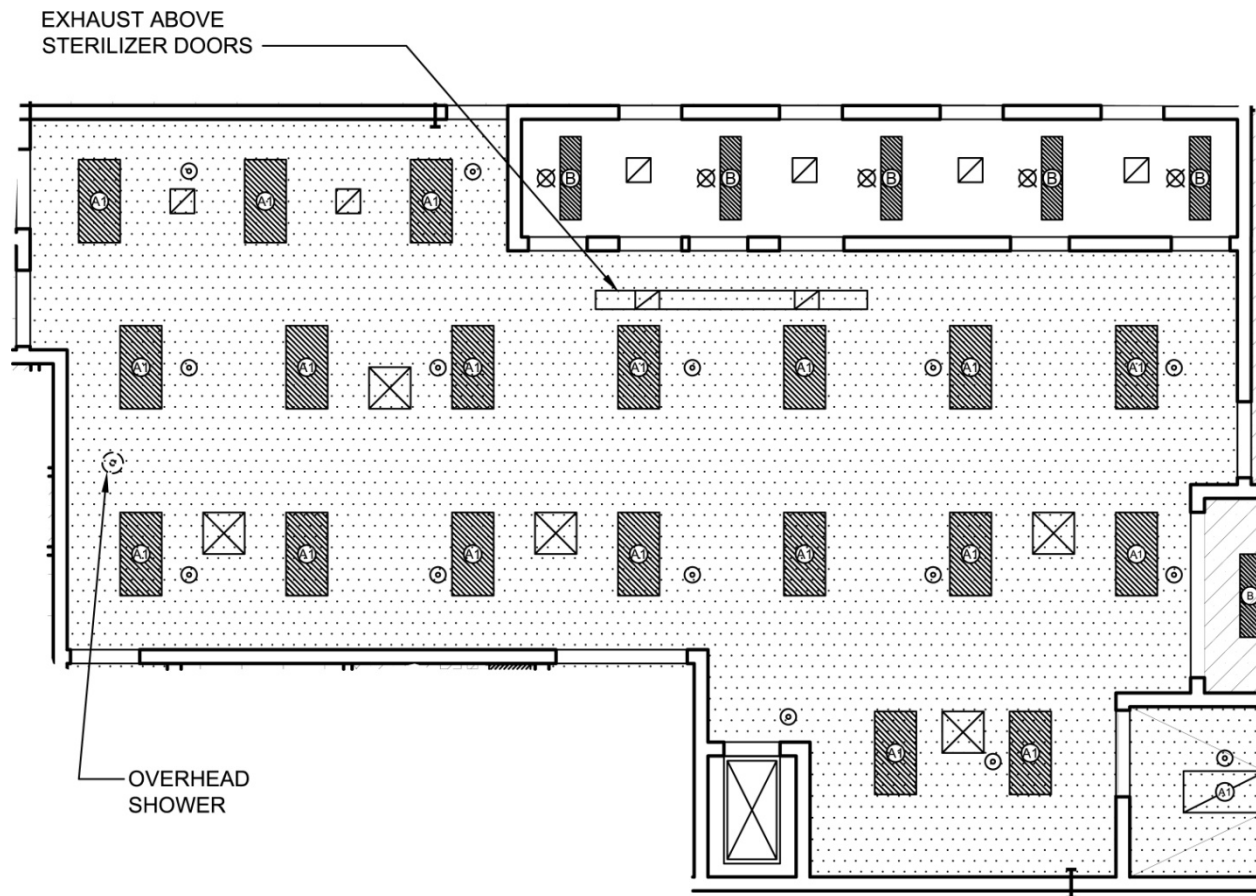
NSF(NSM) per Space Criteria
 M2 1 0 2 4 8Ft

Scale: 1/8" = 1'-0"

NOTE: Guide plates are graphical representations of selected room types, illustrating the integration of space, components, systems, and equipment. They provide typical configurations and general technical guidance, and are not intended to be project specific. Specific infrastructure design requirements are contained in VA Design Manuals and Space Planning Criteria located in the VA Technical Information Library.

Soiled Receiving and Decontamination Area (ZSPD1)

Reflected Ceiling Plan



NSF(NSM) per Space Criteria
M2 1 0 2 4 8Ft

Scale: 1/8" = 1'-0"



NOTE: Guide plates are graphical representations of selected room types, illustrating the integration of space, components, systems, and equipment. They provide typical configurations and general technical guidance, and are not intended to be project specific. Specific infrastructure design requirements are contained in VA Design Manuals and Space Planning Criteria located in the VA Technical Information Library.

Soiled Receiving and Decontamination Area (ZSPD1)

Design Standards

ARCHITECTURAL

Ceiling:	RES-W/GWB (SC)
Ceiling Height:	9'-0" (2700 mm)
Wall Finish:	RES-W/GWB (SC)
Wainscot:	--
Base:	RES
Floor Finish:	RES
Slab Depression:	--
Sound Protection:	--
Notes:	--

SPECIAL EQUIPMENT

--

LIGHTING

General:	30 FC – 1 W/SF (MIN)
Special:	AsShown
Notes:	

- 1) Fixture A1: 2'x4' (600 mm x 1200 mm) recessed, flange mounted fluorescent light fixture, UL listed for wet location, prismatic lens with gasketing, w/ F32T8 lamps 3500•K, CRI=70 (minimum).
Fixture B: 1'x4' (600 mm x 1200 mm) recessed, flange mounted fluorescent light fixture, UL listed for wet location, prismatic lens with gasketing, w/ F32T8 lamps 3500•K, CRI=70 (minimum).
- 2) The foot-candle level is average maintained.
- 3) Provide ballasts per fixture for desired switching configuration. To provide a uniform lighting level, switch inner lamp(s) on first switch and outer lamps on second switch.
- 4) Exact quantity, location, and lamping of light fixtures shall be chosen to meet the foot-candle requirement.
- 5) Sterilizer Equipment Room: 30 FC level.

POWER

General:	As Shown
Emergency:	All
Notes:	

- 1) Provide emergency (critical branch) power to maintain room functionality.
- 2) Consider covers for devices to protect from wet location.

COMMUNICATION/SPECIAL SYSTEMS

Data:	Yes
Telephone:	Yes
Intercom:	Yes
Nurse Call:	--
Public Address:	Yes
Radio/Entertainment:	--
MATV:	--
CCTV:	--
MID:	--
Security/Duress:	--
VTEL:	--
VA Satellite TV:	--
Notes:	--

HEATING, VENTILATING AND AIR CONDITIONING

Inside Design Conditions:	
Dry-Bulb Temperature:	68F (20C)
Relative Humidity:	30% - 55%
Minimum Total Air Changes per Hour:	10
Room Air Exhaust Required:	Yes, 100%
Special Exhaust or General Exhaust:	General Exhaust
Room Air Return Permitted:	No
Room Air Balance:	Double Negative (--)

PLUMBING AND MEDICAL GASES

Cold Water:	Yes
Hot Water:	Yes
Non-Patient Medical Air:	Yes
Laboratory Vacuum:	Yes
Sanitary Drain:	Yes
Reagent Grade Water:	Yes
Medical Air:	--
Medical Vacuum:	--
Oxygen:	Yes
Notes:	--

Soiled Receiving and Decontamination Area (ZSPD1)

Equipment List

JSN	SYMBOL	QTY	AI	DESCRIPTION
A1010		1	CC	<u>Telephone/Data Combination Outlet (PG-18-1, MCS 27 31 00)</u> Telephone/data outlet location.
A1014		1	CC	<u>Telephone, Wall Mounted, 1 Line, With Speaker</u> Telephone, wall mounted, 1 line, with speaker.
A1195		1	CC	<u>Counter, Cleanup, with 2 or 3 Sinks</u> Two or three sink cleanup counter. Unit is constructed of type 304 corrosion resistant stainless steel. It consists of three sinks 14"W X 16"H X 10"D, hot and cold water faucet, and pre-rinse spray hose. Equipped with channel reinforced drainboards, and backsplash, and supported by tubular stainless steel legs. Unit is designed for use in control sterile supply decontamination areas.
A5075		1	VV	<u>Dispenser, Soap, Disposable</u> Disposable soap dispenser. One-handed dispensing operation. Designed to accommodate disposable soap cartridge and valve.
A5080		1	CC	<u>Dispenser, Paper Towel, Stainless Steel, Surface Mounted</u> A surface mounted, satin finish stainless steel, single-fold, paper towel dispenser. Dispenser features: tumbler lock; front hinged at bottom; and refill indicator slot. Minimum capacity 400 single-fold paper towels. For general purpose use throughout the facility.
F2020		1	VV	<u>Can, Trash, 44 Gallon</u> Forty four (44) gallon trash can, 32" high X 24" diameter, with lid. Used to collect and transport refuse from a point of origin to point of disposal (example: from soiled utility or a nursing unit to the trash compactor at housekeeping).
F3200		1	VV	<u>Clock, Battery, 12" Diameter</u> Clock, 12" diameter. Round surface, easy to read numbers with sweep second hand. Wall mounted unit for use when impractical to install a fully synchronized clock system. Battery operated, (batteries not included).
M3070		1	VV	<u>Hamper, Linen, Mobile, with Lid</u> Mobile linen hamper with hand or foot operated lid. Made of heavy tubular stainless steel with heavy gauge welded steel platform. Holds 25" hamper bags. Mounted on ball bearing casters. For linen transport in hospitals and clinics.
M3072		1	VV	<u>Frame, Infectious Waste Bag with Lid</u> Frame for an infectious waste collection bag. Made of heavy tubular stainless steel with heavy gauge welded steel platform. Adjust to hold 18" or 25" trash bags. Mounted on ball bearing casters and includes

				permanently mounted hinged lid. Provides means of bagging infectious waste at point of waste generation.
P6350		1	CC	<u>Sink, Flushing Rim, China</u> Flushing rim sink approximately 18" H x 26" D x 22" W. Also called a clinic service sink. Unit is constructed of vitreous china with an integral flushing rim. It includes: faucet with a fork brace; 6 inch wrist control handles; plain end spout with bucket hook; stainless steel spring type front rim guard; and grid drain. If it is to be floor mounted, a base must be provided. Unit is used in utility rooms to clean equipment and materials.
S0190		AR	CC	<u>Rack, 2SH, 16x16x26 Chamber</u> Rack with two extendable shelves for use with sterilizers having a 16X16X26 chamber. For use in providing loading efficiency for a wide variety of mixed or single item loads.
S0940		1	VV	<u>Washer/Disinfector, Steam, 1 Door, Recessed through 1 Wall, 26x24x24 Chamber</u> A recessed mounted (through one wall), single door (vertical sliding with tempered glass window), multi-level, mechanical, washer/disinfector, minimum chamber size 26X24X24, utilizing facility supplied steam. The unit is controlled by a microcomputer that monitors and controls all unit operations and functions and provides both audible and visual indications of deviations. A printer-recorder documents and records each cycle performance. Processing cycles are pre-programmed with pre-wash, wash/cleaning, rinse, and thermal rinse/disinfection. For use in health care facilities and laboratories where reusable items (instruments, utensils, anesthesia/respiratory goods, and glassware) are handled for decontamination purposes. This unit is not a substitute for terminal sterilization. Unit available with manual or power door, various electrical configurations, options, and accessories. Price based upon power door, 208V, 3-phase, with various options.
S2635		1	CC	<u>Cleaner, Ultrasonic, SINGLE Chamber, CAB, F/S</u> A free-standing, cabinet mounted, single stainless steel chamber (minimum size 10X24X12), ultrasonic cleaner. The cleaning unit includes the following minimum features: power lid, automatic detergent injector, automatic level controls, automatic timer, and switch fill and drain controls. Sonic cleaning energy provided to the chamber by transducers which are powered by a solid-state generator(s) at a frequency of 40 kHz. Designed for use in surgery reprocessing areas, central processing departments and laboratories to clean surgical instruments and other hardware with sonic energy.
S9770		1	CC	<u>Cart, Loading, Sterilizable</u> All purpose sterilizable loading/supply cart with fixed bottom shelf, two full-length adjustable shelves, and

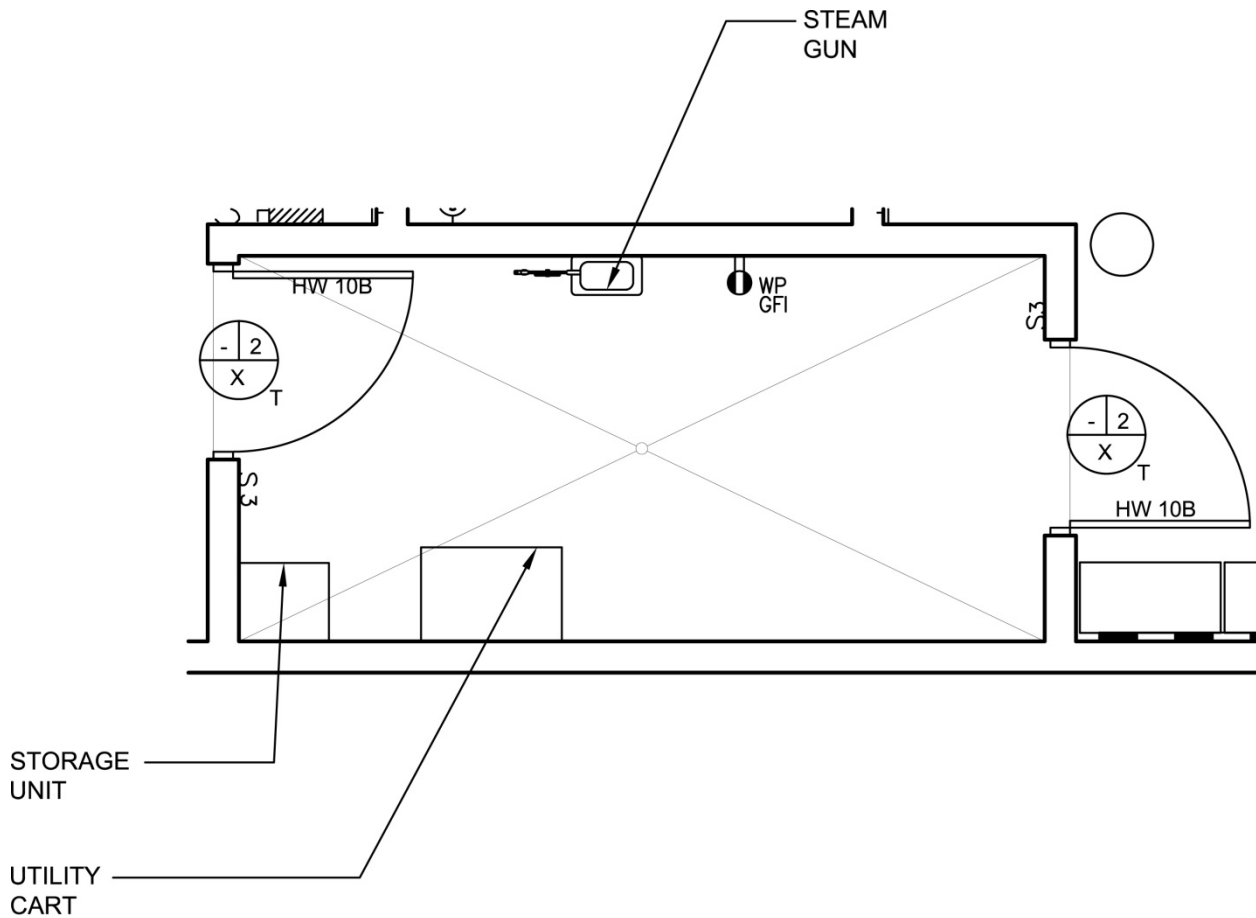
				two adjustable retaining rods. The cart is specially constructed to resist the corrosive action of high temperature steam and gas sterilization. For use with cart loading sterilizers and washers to process, transport and store goods. Cart is available in a minimum of two sizes. Dimensions and pricing based on a cart for a chamber size of 26X62X76.
		1	CC	<u>Sterilizer, Steam, Bulk, Prevacuum, Double Door</u> Floor mounted, through the wall, double door, prevacuum, steam sterilizer for the sterilization of medical instrumentation. May have integrated steam generator or hospital provided steam source. Unit shall be capable of providing variable vacuum and gravity sterilization cycles. Unit shall be equipped with visual display, pressure sensitive keypad, audible alarms, and integrated impact printer which provides a record of system performance for each cycle. Installation Requirement Dimensions H 80 x W 112 x D 124.
S9610		2	CC	<u>Station, Utility/Rack</u> Rack / utility station. The station consists of a stainless steel countertop, 4-1/2" apron, legs and necessary cross-member supports. The stations are specially designed to handle loading racks or trays for use with a specific manufacturer's related equipment and accessories but may also serve a variety of general uses, such as an accumulating, sorting, inspecting, or processing station. Various station widths/lengths (25" to 126", depending upon manufacturer) are available. Pricing based on 48' width/length.
		2		<u>Washer Disinfector, Three Stage</u> Through the wall, tunnel type, multi-level, mechanical, washer/disinfector, utilizing facility supplied steam. The unit is controlled by a microcomputer that monitors and controls all unit operations and functions and provides both audible and visual indications of deviations. A printer-recorder documents and records each cycle performance. Processing cycles are pre-programmed with pre-wash, wash/cleaning, rinse, and thermal rinse/disinfection. For use in health care facilities and laboratories where reusable items (instruments, utensils, anesthesia/respiratory goods, and glassware) are handled for decontamination purposes. Install dimensions H 86 x W 42 x D 195
		AR		Overhead Emergency Shower and Eyewash.
		AR		Surfaces for sorting and staging incoming instruments/equipment.
		AR		Window for passing items from Decontamination Room to Sterile Preparation area.
		AR		Additional washer/disinfector units. Consider multi-chamber units.

		AR		Equipment to ergonomically load racks into washer/disinfectors.
		AR		Multiple utility carts.
		AR		Additional hampers and waste containers.
		AR		Hardware for electronic tracking of instruments and equipment.
		AR		Multiple means of disposing of sharps.
		AR		Additional Sterilizable Loading Cart.
		AR		Carts for cart washer.
		AR		Hand disinfectant dispenser.
		AR		Multiple ultrasonic units specific for laproscopic instruments.
		AR		Exam lighting for tech work areas.
		1	CC	Receptacle, electrical, quadruplex, ground fault interrupter, for computer equipment items (PG-18-1, MCS 26 27 26).
		AR	CC	Receptacle, electrical, duplex, 120 volt, ground fault interrupter (PG-18-1, MCS 26 27 26).
		1	CC	Public address speaker, wall mount (PG-18-1, MCS 27 51 16).
		1	CC	Intercom outlet (PG-18-1, MCS 27 51 33).
		AR	CC	Disconnect Switch (PG-18-1, MCS 26 29 21).
		AR	CC	Junction Box (PG-18-1, MCS 26 05 33).

This page intentionally left blank.

Manual Equipment Wash (CWSH1)

Floor Plan



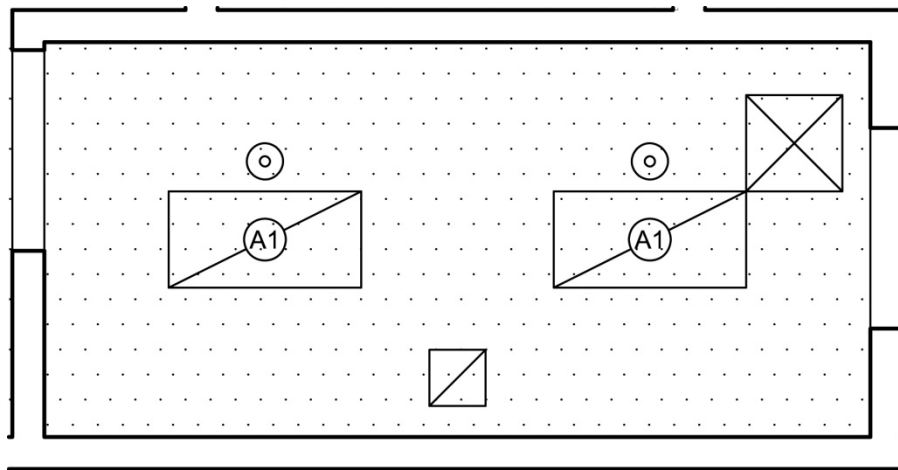
140 NSF / 13.0NSM



NOTE: Guide plates are graphical representations of selected room types, illustrating the integration of space, components, systems, and equipment. They provide typical configurations and general technical guidance, and are not intended to be project specific. Specific infrastructure design requirements are contained in VA Design Manuals and Space Planning Criteria located in the VA Technical Information Library.

Manual Equipment Wash (CWSH1)

Reflected Ceiling Plan



140 NSF / 13.0 NSM



NOTE: Guide plates are graphical representations of selected room types, illustrating the integration of space, components, systems, and equipment. They provide typical configurations and general technical guidance, and are not intended to be project specific. Specific infrastructure design requirements are contained in VA Design Manuals and Space Planning Criteria located in the VA Technical Information Library.

Manual Equipment Wash (CWSH1)

Design Standards

ARCHITECTURAL

Ceiling:	RES-W/GWB (SC)
Ceiling Height:	9'-0" (2700 mm)
Wall Finish:	CT4
Wainscot:	--
Base:	RES
Floor Finish:	RES
Slab Depression:	--
Sound Protection:	--
Notes:	

SPECIAL EQUIPMENT

--

LIGHTING

General:	50 FC – 1 W/SF
Special:	As Shown
Notes:	

- 1) Fixture A1: 2'x4' (600 mm x 1200 mm) recessed, flange mounted fluorescent light fixture, UL listed for wet location, prismatic lens with gasketing, w/ F32T8 lamps 3500•K, CRI=70 (minimum).).
- 2) The foot-candle level is average maintained.
- 3) Exact quantity, location, and lamping of light fixtures shall be chosen to meet the foot-candle requirement.

POWER

General:	As Shown
Emergency:	All
Notes:	--

COMMUNICATION/SPECIAL SYSTEMS

Data:	--
Telephone:	--
Intercom:	--
Nurse Call:	--
Public Address:	--
Radio/Entertainment:	--
MATV:	--
CCTV:	--
MID:	--
Security/Duress:	--
VTEL:	--
VA Satellite TV:	--
Notes:	--

HEATING, VENTILATING AND AIR CONDITIONING

Inside Design Conditions:	None
Dry-Bulb Temperature:	--
Relative Humidity:	--
Minimum Total Air Changes per Hour:	10
Room Air Exhaust Required:	Yes, 100%
Special Exhaust or General Exhaust:	Special Exhaust ("Wet Exhaust")
Room Air Return Permitted:	No
Room Air Balance:	Negative (-)
Notes:	--

PLUMBING AND MEDICAL GASES

Cold Water:	Yes
Hot Water:	Yes
Laboratory Air:	--
Laboratory Vacuum:	--
Sanitary Drain:	Yes. See Note 1)
Reagent Grade Water:	--
Medical Air:	--
Medical Vacuum:	--
Oxygen:	--
Notes:	

- 1) Drain at room center; slope floor at 1/8" per ft.

Manual Equipment Wash (CWSH1)

Equipment List

JSN	SYMBOL	QTY	AI	DESCRIPTION
E0906		AR	VV	<u>Locker, Supply, General, Wall Mounted, Stainless Steel, 23"W x 20"D</u> THIS TYPICALLY INCLUDES: 1 Wall Mounted Rail 1 Locked Storage Container 2 Tray/Shelves 1 Drawer, 3"H (76mm) 3 Drawers, 6"H (152mm) 2 Drawers, 9"H (229mm) 1 Tray/Shelf Divider Drawer Organizer Bins Consider the need for an E0921 to transport the locker from place to place. Must be stainless steel.
E1500		AR	VV	<u>Rail, Modular, Wall Mounted, Hx144xD</u> Wall mounted rail used for hanging (mounting) lockers, shelves drawers on a wall.
S4300		1	CC	<u>Gun, Steam</u> A wall mounted steam gun utilizing facility supplied steam. Steam gun is provided with a 10' high pressure steam hose, 10' detergent hose, detergent tank, two nylon brushes, and one stainless steel brush. Provides a choice of steam only, steam and detergent, hot water and detergent, and hot water only. For use to clean moisture resistant items (carts, racks, and other metal items) that otherwise might require hand scrubbing.
		1		<u>Compressed Air</u> Oil free, water free, compressed air for drying medical instrument lumens. Ability to deliver a minimum of 2 SCFM and a maximum of 10 SCFM. Must provide a regulated source for air.
		AR		Utility cart.
		AR	CC	Receptacle, electrical, duplex, ground fault interrupter, w/weather proof cover, 120 volt (PG-18-1, MCS 26 27 26).