



Department of
Veterans Affairs

Office of Construction & Facilities Management

4. SCI/D Long Term Care

SPINAL CORD INJURY/ DISORDERS CENTER

4.0 SPINAL CORD INJURY/DISORDERS CENTER LONG TERM CARE

* The extent of changes from the 2008 manual to the 2011 version are limited to minor HVAC changes (temperature, humidity, etc.) found in the HVAC section of the design plates. The architectural and electrical requirements remain the same.

4.1 SCI/DC LTC Narrative

4.1.1 Planning Criteria

The design concepts described for SCI/D Centers in Chapter 1.0 of this Design Guide are relevant for SCI/D Long Term Care units.

1. *Design Concepts*

The primary reason for differences in design concepts for the SCI/D Long Term Care unit is that the Veterans being treated in this environment have needs that encompass both Long Term Care and Spinal Cord Injury/Disorders care. The SCI/D Long Term Care Center's occupants should be described as residents rather than patients. The environment should reflect the idea and concept that the SCI/D long term care unit is residential in nature.

However, like the patients with acute spinal cord injuries and/or disorders, those being cared for in the SCI/D Long Term Care environment have special needs related to injuries and/or disorders of the spinal cord. As a result, the SCI/D Long Term Care unit must be able to care for these residents with special needs, while doing so in a residential setting.

2. *Location*

In all new construction, the SCI/D Long Term Care unit must be located at ground level with access

to outdoor spaces including a dedicated Therapeutic Courtyard. Each SCI/D Long Term Care unit should have its own building entrance with a covered canopy and parking lot with accessible parking that meets the requirements for spinal cord injury residents and their adaptive vehicles. The dedicated accessible parking spaces cannot be included in the required accessible parking count for the Medical Center in general. These spaces are in addition to the accessible parking requirement for the Medical Center. The at-grade entry and access to the outdoors is intended to encourage residents to be independent and to enjoy the off-unit environment.

Like the SCI/D Acute Care facility, the SCI/D Long Term Care Center requires support services and clinical services from a host Medical Center. The SCI/D Long Term Care Center should be adjacent, via a climate-controlled connection, to services provided by the Medical Center, just as required for an SCI/D Acute Care Center. These services include Food and Nutrition Service, Supply, and Building Management Service as well as general and specialty clinics. If both types of SCI/D programs are located on the same Medical Center campus, SCI/D Long Term Care units should be physically separated from SCI/D acute patients to avoid impacting SCI/D acute patients who are in early stages of rehabilitation.



Regardless of whether SCI/D Acute Care and SCI/D Long Term Care are located on the same campus, patient/resident transfers need to be accommodated.

Different scenarios for this exist but include SCI/D acute patients “stepping down” to SCI/D Long Term Care facility. In other cases, Long Term Care residents may need to be transferred to SCI/D Acute Care for medical or surgical conditions that require more intensive care and/or specialized services. Conditions may require medical isolation for co-morbid medical conditions and co-morbid psychological problems. Also, the distance between the SCI/D Long Term Care unit and Mental Health services should be maximized. This is mainly to provide a higher degree of protection from mental health patients who could be unstable and unpredictable.

The SCI/D Long Term Care facility that is not located in the same Medical Center as an SCI/D Acute Care facility should have its own clinic space. The clinic areas are used to support outpatient functions for long term care SCI/D patients and for inpatient residents.

3. Layout

Layout concepts discussed for SCI/D Centers in Chapter 1.0 of this Design Guide are relevant for SCI/D Long Term Care units. The “home-like” environment of “Eden Concept” has been adopted by the VA for the Long Term Care Facilities. The environment should be designed as a more residential rather than acute care setting. On unit or sub-unit

clusters as neighborhoods are desirable for the facility. Additionally, the residential nature of the SCI/D Long Term Care unit should encourage the following:

- *Resident Rooms* should include many of the features found in the VA Nursing Home Care guidelines such as the encouragement of resident independence and interaction.
- *Dining Facilities* should be more homelike.
- *Recreational Facilities*, both indoor and outdoor, should be highly accessible for residents. These should include passive and active areas such as walkways, gardens and planted areas.
- *Visiting Spaces* where residents can meet with family and/or friends need to be adjacent to resident living spaces.
- *Services* used by residents need to be proximate whether they be therapy rooms, therapeutic baths, education spaces or others.

4. Space

In the majority of cases, spaces for the SCI/D Long Term Care Center are identical in function and size to SCI/D Acute Care Center spaces. For the required rooms and sizes, refer to Space Allocation Matrices provided for each Center type (Acute Care, Long Term Care or Free-Standing Outpatient Clinics), located in Appendix B of this Design Guide. The following descriptions of spaces are for those that are specific to SCI/D Long Term Care:

- *1-Bed Resident Room - Single or 1-bed rooms are similar for SCI/D Longer Terms Care residents to*

patients at acute care centers. (See Guide Plate No. 1-L) For planning purposes, a minimum of 73% of SCI/D Long Term Care beds should be 1-bed rooms, with the remainder 27% being 2-bed rooms. The minimum size of the SCI/D 1-bed Long Term Care resident room is larger than the SCI/D Acute Care 1-bed room. The minimum size of the SCI/D Long Term Care resident room is similar to the SCI/D Acute Center 1-bed rooms. (See Figure 4.1)

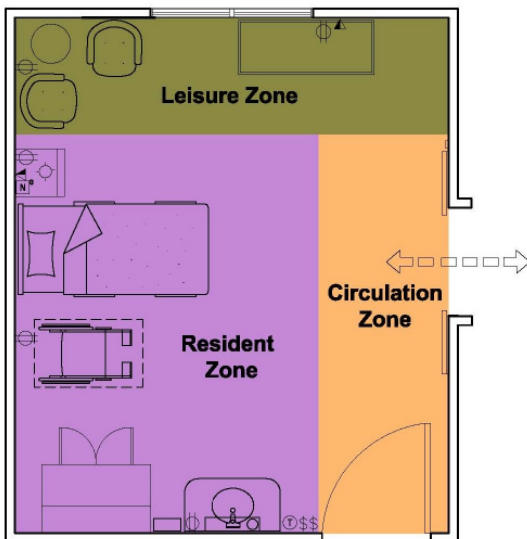


Figure 4.1
1-Bed Resident Room
 Zoning Diagram

- **2-Bed Resident Room** - The 2-bed rooms in SCI/D Long Term Care units are larger than those in SCI/D Acute Care unit. The 2-bed room is especially helpful for residents who desire a roommate. (See Guide Plate No. 2 - L). The effectiveness of 2-bed rooms may be enhanced when the rooms are designed to maximize equality of space for each resident such as access to

the windows and the path to the litter bathroom.

Resident privacy should be maintained by means of ceiling mounted curtains that can be drawn around either of the two beds, in coordination with the transfer lift tracks. One private litter bath per patient bed will be allocated.

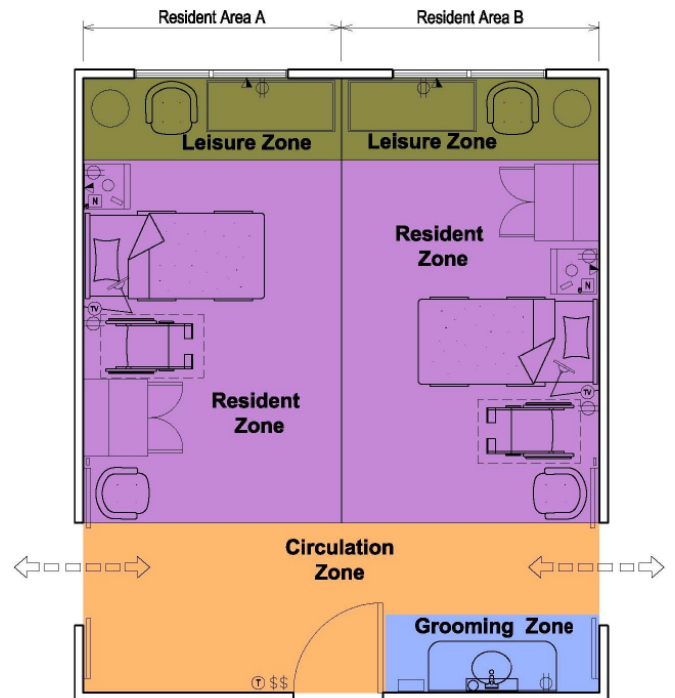


Figure 4.2
2-Bed Resident Room
 Zoning Diagram

The minimum size of the 2-bed SCI/D Long Term Care resident room is slightly larger than the SCI/D Acute Care Center’s 2-bed rooms. (See Figure 4.2)

- **Special Care Room** - Some residents with special care needs may be best served in rooms that are designated as special care rooms. These resident rooms

may accommodate additional equipment such as ventilators.

An additional use for these rooms would be for bariatric residents who need specially dimensioned furniture to accommodate their size and weight. It is required that these special care rooms shall be all single or 1-bed rooms to avoid problems associated with resident care.

Like the other resident rooms, there must be adequate space to allow for resident turnaround in a wheelchair as well as adequate space for resident transfer on/off lift devices.

Ceiling height should be a minimum of 9'-0" (2743 mm) for lift/transfer clearance and flexibility of fixed lift device installation and operation. (See Guide Plate No. 3 - L).

- *Resident Litter Bathroom* - To accommodate the level of care provided with staff assistance in the toileting and showering of SCI/D residents, the resident litter bathroom should be comparable in size to the litter bathroom provided for an SCI/D Acute Care patient. The ceiling transfer lift system used in the resident bed room is extended into the resident litter bathroom to provide transfer ability for the resident with staff assistance. For additional information on resident litter bathroom, please refer to Guide Plate No. 4 in Chapter 3 of this Design Guide.

The recommended use of the transfer lift system is for localized transfer (bed to chair, chair to bowel care chair, etc). Use of the transfer lift system to transport residents directly from bed to litter bathroom should be minimized. In new construction, each resident 1-bed or 2-bed room is required to have an adjoining toilet/shower room. (For separate bathrooms in semi-private rooms, please see Paragraph 1.2.4.4 in Chapter 1 of this Design Guide)

- *Nurse Station (Staff Station)* - The traditional, central nurse or staff station is at the hub of the SCI/D resident unit, (See Figure 4.3).

The approach to decentralize nurse stations near clusters of resident rooms is particularly relevant for SCI/D resident units since staffing ratios are high and since there may be substantial horizontal distances to accommodate oversized resident bed rooms and toilet/showers.



Figure 4.3
Nurse/Staff Station
Out Patient Clinic
University of Denver

Another concept that may be explored in the planning/design phases is to open up the nurse/staff station by eliminating the traditional counter that separates staff from residents. This is seen as a more residential and therefore less institutional design solution. The nurse station concept selected by a SCI/D Long Term Care facility should be consistent with the plan of care. There is no one solution to the design of the nurse station. For additional information on Nurse Station, please refer to Guide Plate No. 6 in Chapter 3 of this Design Guide.

- *Visitor Lounge* - Since SCI/D Long Term Care residents may be lifelong occupants of the facility, spaces like the visitor lounge are very important. (See Guide Plate No. 4 - L).



Figure 4.4
Visitor Lounge
Nursing Home
VAMC N. Chicago

As a socialization space, the visitor lounge serves as a place for residents to visit outside the resident room, with family or other residents, (See Figure 4.4).

Depending on center design, the visitor lounge could be subdivided into several smaller spaces.

- *(On-Unit) Resident Dining* - Meals and mealtime are considered very important to the SCI/D Long Term Care resident. Residents eat lunch and dinner communally in this space while breakfast is typically in the resident room.

Adequate space is needed for circulation between tables. At non-meal times, the resident dining room may be used for other purposes, especially where tables are needed, such as for table games and activities, (See Figure 4.5). The SCI/D Long Term Care dining facility should be more residential in appearance.



Figure 4.5
Dining Room
SCI/D Center Long Term Care Center
VAMC Hampton, VA

However, meals are typically provided by the Medical Center's dietetics service so the meal service concept needs to be coordinated with Medical Center capabilities. The on-unit resident dining concept, with a modular approach to resident seating, is shown in Guide Plate No. 8 - L.

It should be noted that the on-unit resident dining room shall not be provided in lieu of, but rather in addition to the resident dining/serving for Acute Care SCI/D facilities, as illustrated on Guide Plate No. 12 in Chapter 3 of this Design Guide.

- *Storage Room (Resident Belongings)* -The storage of resident belongings needs to be accommodated by the SCI/D Long Term Care facility. Even though storage generally is not encouraged, there is the realization that some veterans receiving care in the SCI/D Long Term Care facility have few available options.

It is recognized that some storage is needed outside the resident room for those items that the residents retain and may use on occasion. The SCI/D Long Term Care facility must have a plan of care that addresses the types and quantities of items that individual residents may store and whether direct resident access is allowed. Storage for resident belongings may be accessed by residents, by staff, or a combination of both. One modular option for storage of resident belongings is shown in Guide Plate No. 9 - L.

- *Physical/Kinesiotherapy/ Occupational Therapy* - SCI/D Long Term Care facilities may choose to combine physical therapy, kinesiotherapy and occupational therapy into one space.

When these spaces are combined, the total square footage of the resulting room must accommodate the functions of the individual program spaces.

The emphasis of PT/KT/OT is somewhat different from SCI/D Acute Care in that Acute Care patients are generally developing skills while the Long Term Care resident is maintaining skills.

However, many of the activities and equipment are similar, including a need for transfer lifts. (See Guide Plate No. 7 - L).

Occupational therapy focuses on strengthening and optimizing a resident's independence while concentrating on finer physical movement. Activities may include vocational training, including special adaptive equipment such as computers and telephones.

Physical therapy concentrates on gross neuromuscular and skeletal activity. (See Figure 4.6).



Figure 4.6
Physical Therapy
Combined Therapy Suite
VAMC N. Chicago.

Typical components of physical therapy may include mats, platforms, gait training, parallel bars, and weights, as well as other resistive equipment and orthotic and prosthetic training services. (See Figure 4.7).



Figure 4.7
Kinesiotherapy
SCI/D Center Long Term Care Center
VAMC Hampton, VA

Kinesiotherapy combines exercise and education to motivate and assist residents in maintaining physical skills. Previously known as Collective Therapy, kinesiology focuses on large motor exercises and activities. (See Figure 4.7). A private Exam Room is desirable in proximity to the treatment area. (See Figure 4.8).

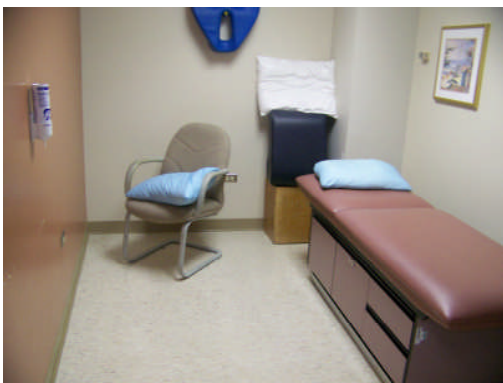


Figure 4.8
Private Exam room
Combined Therapy Suite
VAMC N. Chicago

In the SCI/D Long Term Care facility, recreation therapy plays a very important role for the residents. Since residents may be lifelong, recreation therapy can be crucial to quality of life by providing activities, diversions, and opportunities to socialize through activities.

The recreation therapy room should accommodate a wide variety of recreational activities including adaptive games, traditional table games, as well as suitable arts and crafts. Working with recreation therapists, residents learn to use adaptive equipment and maintain manual dexterity.

The room also may be used by residents for self-directed activities. Ceiling mounted tables may be raised to permit other large group activities or sports requiring extensive floor space.

- **Passive and Active Outdoor Spaces** - Access to the outdoors is important to the residents of the SCI/D Long Term Care facility. (See Figure 4.9).



Figure 4.9
Outdoor Space
SCI/D Center Long Term Care Center
VAMC Hampton, VA

Residents should be encouraged to be independent enough to use the SCI/D dedicated outdoor space as frequently as possible, weather permitting. Other passive and active outdoor spaces include paths and walkways, gardens and planted areas, seating and/or gathering places for meditation and conversation. (See Figure 4.10).



Figure 4.10
Outdoor Walkways and Planted Areas
Nursing Home Care Unit
VAMC N. Chicago

Outdoor dining and picnic areas should be considered. (See Figure 4.11).



Figure 4.11
Outdoor Dining/Picnic Areas
SCI/D Center Long Term Care Center
VAMC Hines, Illinois

- **Computer Lab** - The typical SCI/D Long Term Care resident will have a desk and PC in his/her own room, unlike the SCI/D Acute Care patient.

However, a need exists to provide a classroom for those residents who do not have a PC. In this classroom, SCI/D residents can receive training on the use of the Internet and other PC skills. A computer lab with a minimum of 3 to 4 PC stations, printer, and other appropriate equipment is recommended, (See Figure 4.12).

The PC locations can be either at the perimeter of the room, as shown on Guide Plate No.6 - L, or it can follow a more formal classroom arrangement with the PC desks placed in the center, facing a teaching location/screen.

In both cases, sufficient accessible circulation must be provided for residents and teachers.



Figure 4.12
Computer Lab
SCI/D Center Long Term Care Center
VAMC Hines, Illinois

- *Covered Entry* - At the main entry point of the SCI/D Long Term Care facility, there should be a covered entry for resident drop-off. During inclement weather, this area could be used by residents to be able to spend some time outdoors. (See Figure 4.13).
- *Lobby/Entry* - In the SCI/D Long Term Care facility, the lobby/entry may serve several purposes. The lobby/entry may be appointed with stimulating features such as an aquarium, plants, and furnishings that are residential in nature. (See Figure 4.14).



Figure 4.13
Covered Entrance
SCI/D Center Long Term Care Center
VAMC Hampton, VA



Figure 4.14
Lobby/Entry
SCI/D Center Long Term Care Center
VAMC Hines, Illinois

4.1.2 Relationship and Flow Diagram

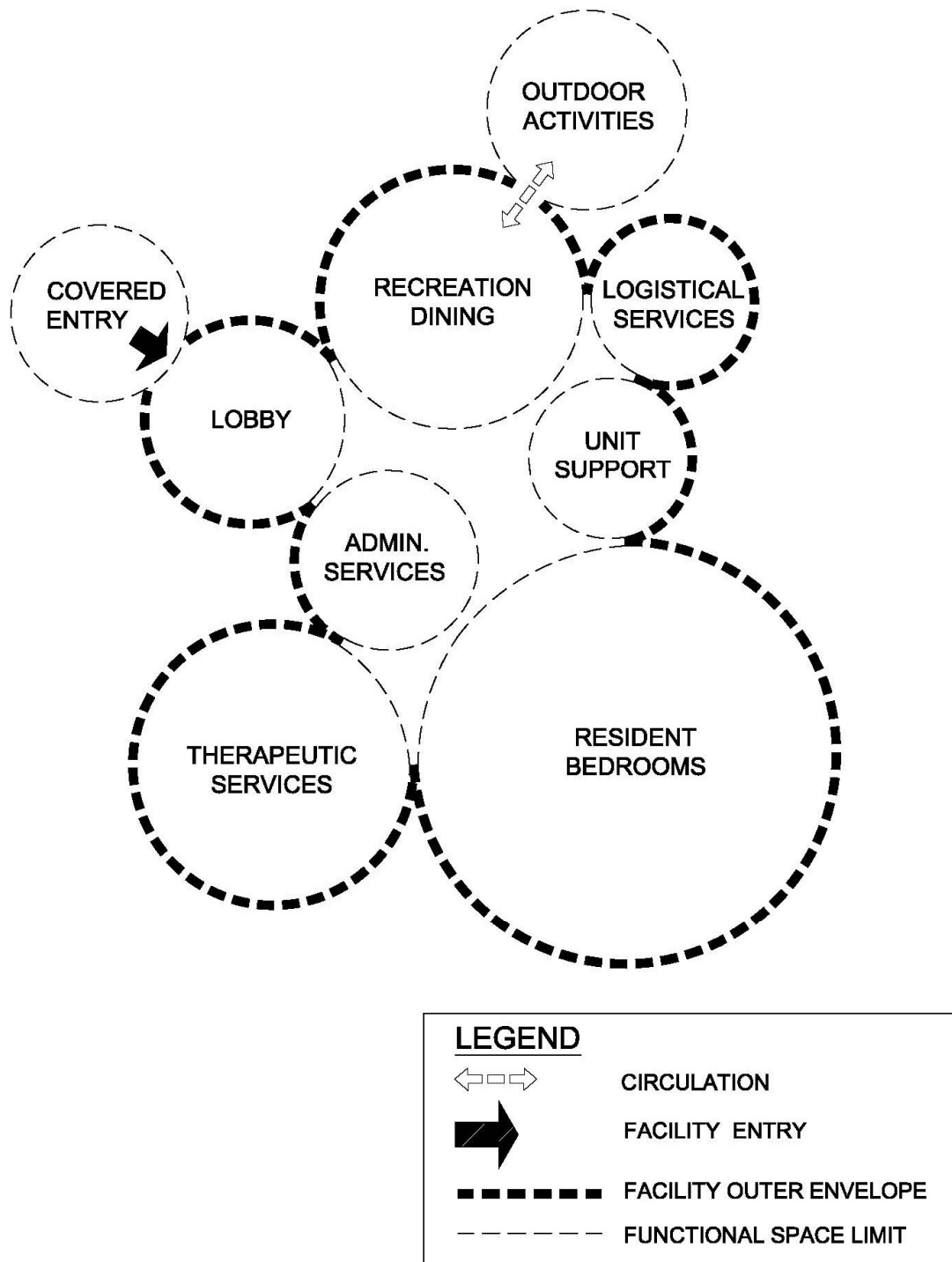


Figure 4.15
Spinal Cord Injury/Disorders-Long Term Care Center
 Relationship and Flow Diagram. (NTS)

4.2 Technical Criteria

4.2.1 Codes, Standards and Executive Orders

The Department of Veterans Affairs requires design consultants to use the latest editions of codes and standards for all projects.

The current profiles of VA clients indicate that a high percentage of RESIDENTS require assistance in activities of daily living such as toileting and showering. The VA *Barrier Free Supplement PG-18-13* establishes requirements, which differ from those of UFAS.

The more stringent requirement is to be followed. It is recommended that facilities adhere to the requirements of PG-18-13, and provide accessibility in 100% of bedrooms and patient toilets designed to accommodate Spinal Cord Injury/Disorders Veterans.

Typical staff assisted activities for veterans include transportation, toileting, bathing, showering, and transfer to and from wheelchairs and beds. Frequent use of lift devices is also required.

Required Codes and Standards for a Spinal Cord Injury/Disorders Long Term Care facility are covered in the Acute Care section of the SCI/D Design Guide in Chapter 2. For more information related to required Codes and Standards for SCI/D facilities, please refer to Chapter 2 of this Design Guide.

4.2.2 Site Considerations

Site analysis and planning are critical to the success of a project. The design team shall perform several preliminary analyses that will affect the final design of the SCI/D Long Term Care facility. Each project designer shall consider the project specifics that include, but are not limited to:

- Site Configuration and Size
- Availability of Parking at a Dedicated Entrance
- Access to VA Medical Center
- Site Topography
- Regional and Climatic Factors
- Utilities
- Outdoor Access

Site related factors required for a Spinal Cord Injury/Disorders Long Term Care facility are covered in the Acute Care Section of the SCI/D Design Guide in Chapter 2. For more information related to the Site Considerations of SCI/D facilities, please refer to Chapter 2 of this Design Guide.

4.2.3 Systems Criteria

All systems and infrastructure criteria shall conform to and comply with the most current version of the Department of Veterans Affairs Design Manuals, VA Design and Construction Procedures, VA Master Construction Specifications, and VA Standard Details, where applicable. Deviations from the VA guidelines may be allowed, provided prior approval is obtained from the VA CFM.

Where specific VA requirements are not available or indicated in this document, design criteria from industry standards such as the National Standard Plumbing Code (NSPC), the National Fire Protection Association (NFPA), ASHRAE, National Electrical Code (NEC), DOE or similar reference guides shall be submitted to the VA for review and approval.

Systems and infrastructure criteria for a Spinal Cord Injury/Disorders Long Term Care facility are also covered in the Acute Care Section of the SCI/D Design Guide in Chapter 2. For more information related to systems and infrastructure criteria for SCI/D facilities, please refer to Chapter 2 of this Design Guide as well as the VA Technical Information Library (TIL).

4.2.4 Programming and Space Criteria

The following information is excerpted from Chapters 104 of the VA Space Planning Criteria for use in this Design Guide. For more detailed planning & programming information, please refer to the Department of Veteran’s Affairs Technical Information Library (TIL) on the VA’s website - www.va.gov/facmgt/standards.

Space Listing

The Spinal Cord Injury/Disorders Center is organized in four Functional groups: A. Patient Care Units; B. Patient Care Unit Support; C. Clinics and Therapy; D. Administration. Note that all square footages included herein are indicated as net square footage (NSF) area numbers. As such, the listings of square footage and subsequent illustrations require the addition of the respective department gross square footage (DGSF) multipliers.

For the typical rooms and sizes, for each SCI/D Center type (Acute Care, Long Term Care or Free-standing Outpatient Clinics) refer to Space Allocation Matrices, located in Appendix B of this Design Guide.

Per VA Space Planning Criteria, certain patient load/workload related spaces may change in size, based on date entered into the formulas. Where shown in the Guideplates, these spaces are typically sized for optimum graphical representation and minimum dimensions / clearances are indicated.

The Guideplates shown in Chapters 3 and 4 of this Design Guide are graphical representations of selected room types that illustrate the integration of space, components, systems and equipment. They provide typical configurations and general technical guidance, and are not intended to be project specific. Specific infrastructure design requirements are contained in VA Design Manuals and Space Planning Criteria located in the VA Technical Information Library (TIL).

A. Resident Care Units

- 1. One-Bed Room (BRMS1) 320 NSF (29.8 NSM)
- 2. Two-Bed Room (BRMS2) 480 NSF (44.6 NSM)
- 3. Negative Isolation Room (BRIT1)/
Anteroom (BRAR1)..... 320 NSF (29.8 NSM)/75 NSF (7.0 NSM)
- 4. Special Care Room (BRMS1) 320 NSF (29.8 NSM)
- 5. Resident (Litter) Bathroom (TLTS1)..... 120 NSF (11.2 NSM)

B. Resident Care Unit Support

1. Entrance/Waiting (WRC01)/
Information Desk (RECP3)..... 200 NSF (18.6 NSM)/100 NSF (9.3 NSM)
2. Nurse Station (NSTA1) 300 NSF (27.9 NSM)
3. Ward Clerk (OFA01/OFA02)..... 80 NSF (7.5 NSM)
4. Medication Room (MEDP1) 120 NSF (11.2 NSM)
5. Conference/Classroom (CRA02) 300 NSF (27.9 NSM)
6. Nurse Supervisor’s Office (OFD01) 130 NSF (12.1 NSM)
7. Staff Lounge (SL001); or Staff Locker Room (LR001); or
Staff Shower (TLTS1) 80 NSF (7.5 NSM)
8. Staff Toilet (TLTU1); or Public Toilet (TLTU1); or
Resident Toilet (TLTU1) 60 NSF (5.6 NSM)
9. Resident Education (OFD03)..... 250 NSF (32.2 NSM)
10. (On-Unit) Resident Dining/Serving (FSCD1) 1665 NSF (154.7 NSM)
11. Resident Laundry (XXYYC)..... 100 NSF (9.3 NSM)
12. Quiet Room (OFA02)..... 150 NSF (13.9 NSM)
13. Visitor Lounge (WRC02)/
Day Room/Lounge (DAYR1)..... 200 NSF (18.6 NSM)/400 NSF (37.2 NSM)
14. Nourishment Kitchen (NCWD1) 100 NSF (9.3 NSM)
15. Activities Coordinator Office (OFD01)..... 130 NSF (12.1 NSM)
16. Veterans Service Organization Office (OFA01/OFA02); or
NSO-PVA Organization Office (OFA01/OFA02) 130 NSF (12.1 NSM)
17. Litter Storage (SRLW1)..... 300 NSF (27.9 NSM)
18. Transfer Equipment Storage (SRE01)/ Medical Equipment
Storage (SRE01) 210 NSF (19.5 NSM)/180 NSF (16.8 NSM)
19. Exam/Treatment (TRGM1) 180 NSF (16.8 NSM)
20. Hydrotherapy (PTWT1)/
Tubroom (PTWT1)..... 380 NSF (35.4 NSM)/200 NSF (18.6 NSM)
21. Clean Linen Holding (LCCL1) 42 NSF (3.9 NSM)
22. Stretcher/Wheelchair Alcove (SRLW1) 40 NSF (3.7 NSM)
23. Clean Utility Room (UCCL1)/
Soiled Utility Room (USCL1) 150 NSF (13.9 NSM)/120 NSF (11.2 NSM)

- 24. Clean Linen Storage (LCCL1)/
Soiled Linen Storage (LCSL1) 80 NSF (7.5 NSM)/ 60 NSF (5.6 NSM)
- 25. Housekeeping Aides’ Closet - HAC (JANC1) 40 NSF (3.7 NSM)
- 26. Meditation Room (RAMR1)..... 150 NSF (13.9 NSM)
- 27. Resident Storage - Resident Belongings (SRPB1)..... 180 NSF (16.8 NSM)

C. Clinics and Therapy

- 1. Clinician Office(OFD01) 130 NSF (12.1 NSM)
- 2. Clean Utility Room (UCCL1) 120 NSF (11.2 NSM)
- 3. Soiled Utility Room (USCL1) 80 NSF (7.5 NSM)
- 4. Housekeeping Aides’ Closet - HAC (JANC1) 40 NSF (3.7 NSM)
- 5. Equipment Storage (SRE01) 150 NSF (13.9 NSM)
- 6. PT/KT/OT Clinic (PTES1) 1700 NSF (157.9 NSM)
- 7. Combined PT/KT/OT Occupational Therapy (XXXXX)..... 800 NSF (74.3 NSM)
- 8. Recreation Therapy (PTES1)..... 850 /1100/1400 NSF (79/102.2/130.1 NSM)
- 9. Computer Lab (CRA02) 300 NSF (27.9 NSM)
- 10. Therapist Cubicle (PTCW1) 80 NSF (7.5 NSM)
- 11. Exam/Treatment Room (TRGS1)..... 180 NSF (16.8 NSM)
- 12. Public Toilet (TLTU1); or Resident Toilet (TLTU1) 60 NSF (5.6 NSM)

D. Administration

- 1. Chief of Service Office (OFM03) 150 NSF (13.9 NSM)
- 2. Secretary/Waiting Office (SEC01)..... 120 NSF (11.2 NSM)
- 3. Psychologist Office (OFDC1); or Social Worker
Office (OFDC1); or Dietitian Office (OFA01/OFA02)..... 130 NSF (12.1 NSM)
- 4. Nurse Administrator Office (OFD01)/ or
Physician Office (OFD01) 130 NSF (12.1 NSM)
- 5. Conference Room (CRA02)..... 300 NSF (27.9 NSM)
- 6. Medical Records/QA (MRS01)..... 150 NSF (13.9 NSM)
- 7. Clerical Cubicle (OFA03) 80 NSF (7.5 NSM)
- 8. Administrative Officer Office (OFA01) 150 NSF (13.9 NSM)

4.2.5 Planning and Design Data References

- VA Space Planning Criteria (Chapters 104, 106 & 270). Department of Veterans Affairs, June 8, 1993. (updated publication date should be listed once the chapter is officially adopted)
- VHA Directive 2005-001. Department of Veterans Affairs, January 11, 2005.
- VHA Directive 2003-067 Department of Veterans Affairs, December 11, 2003
- VA Architectural Design Manual for New Hospitals, May 2006
- VA Nursing Home Design Manual, 2006
- PG – 18 – 13. Barrier-Free Design Guide
- HIPAA Privacy Rule: www.healthprivacy.org/ and www.hhs.gov/ocr/hipaa/

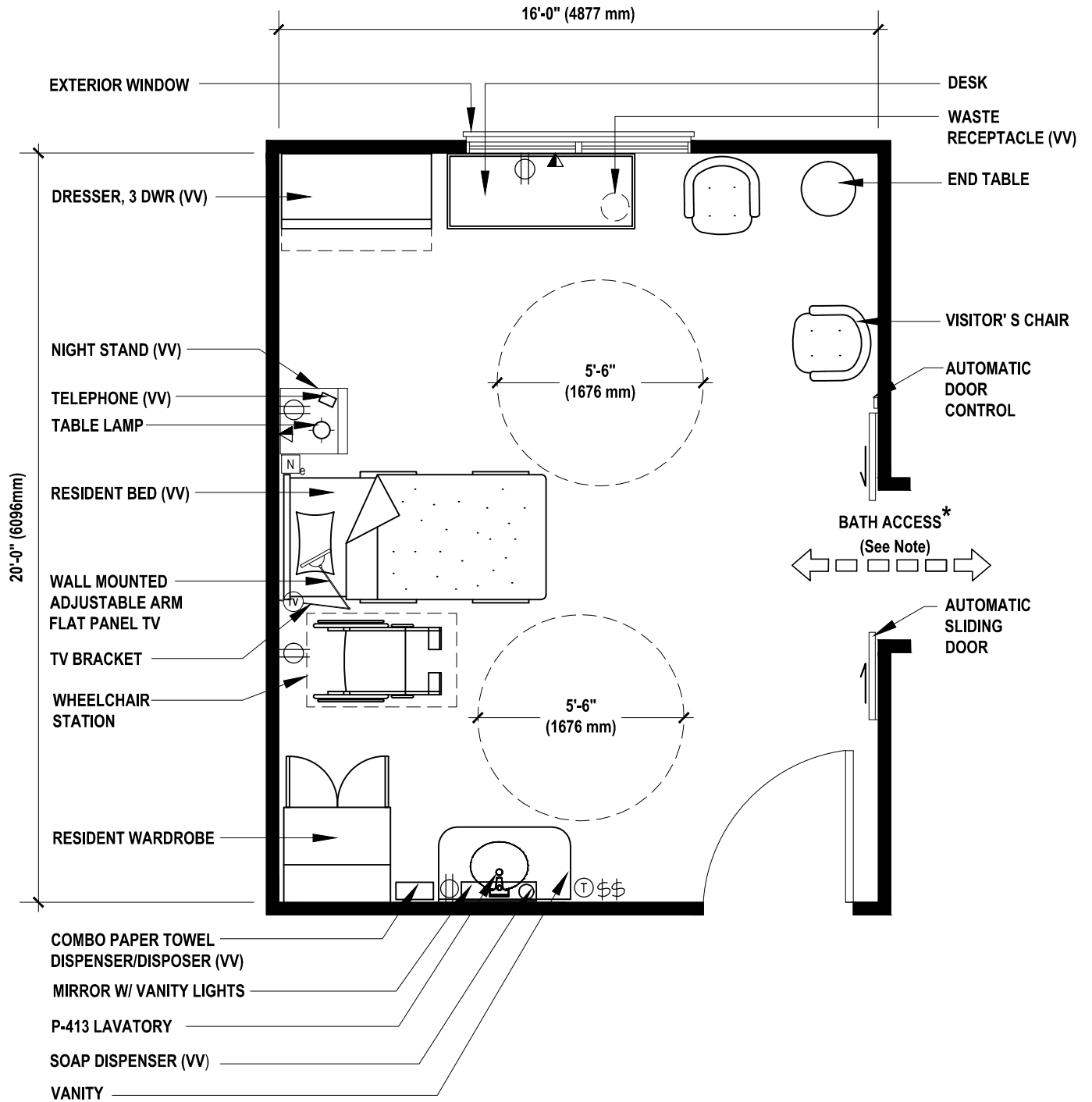
4.3 Interior Guideplates*

| | | |
|--------|---|--------|
| 1 - L. | One-Bed Room (BRMS1)..... | 4 - 19 |
| 2 - L. | Two-Bed Room (BRMS2)..... | 4 - 23 |
| 3 - L. | Special Care Room (BRMS1)..... | 4 - 27 |
| 4 - L. | Visitor Lounge (WRC02)..... | 4 - 33 |
| 5 - L. | Recreation Therapy (PTES1)..... | 4 - 37 |
| 6 - L. | Computer Lab (CRA02)..... | 4 - 41 |
| 7 - L. | PT/KT/OT Clinic (PTES1)..... | 4 - 45 |
| 8 - L. | (On-Unit) Resident Dining/Serving (FSCD1)..... | 4 - 51 |
| 9 - L. | Resident Storage - Resident Belongings (SRPB1)..... | 4 - 55 |

Guideplates are graphical representations of selected room types that illustrate the integration of space, components, systems and equipment. They provide typical configurations and general technical guidance, and are not intended to be project specific. Specific infrastructure design requirements are contained in VA Design Manuals and Space Planning Criteria located in the VA Technical Information Library (TIL).

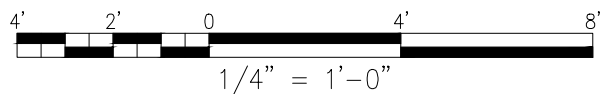
Page Left Blank Intentionally

1 - L. One-Bed Room (BRMS1) Floor Plan

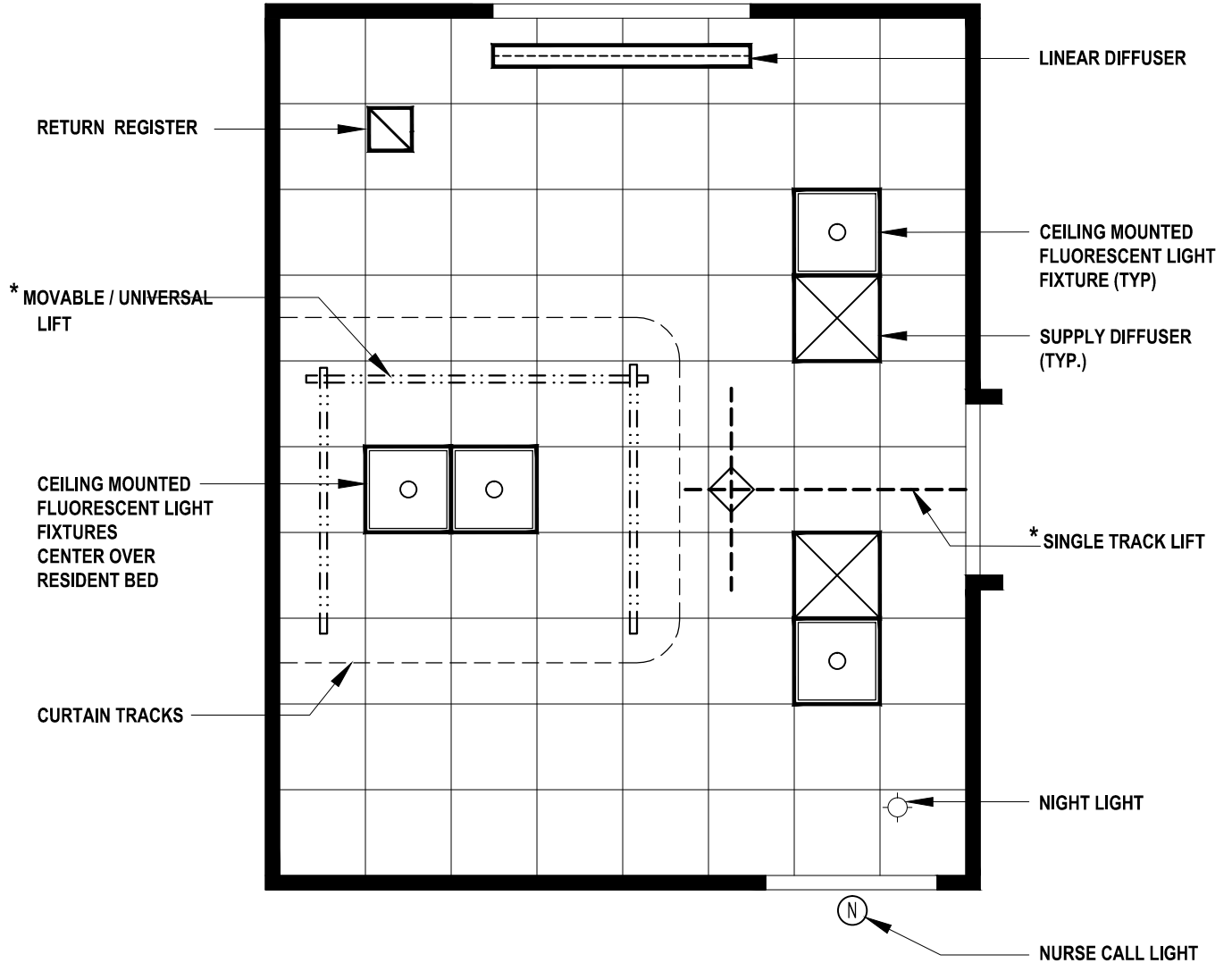


* Note: For Resident (Litter) Bathroom Configuration See Guideplate No. 4 in Chapter 3 of this Design Guide.

320 NSF (29.7 NSM)

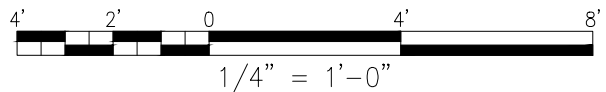


**1 - L. One-Bed Room (BRMS1)
Reflected Ceiling Plan**



NOTE: * BOTH SINGLE TRACK & MOVABLE OR UNIVERSAL TRACK LIFT SYSTEMS ARE INDICATED IN THE PLAN AS AN OPTION. THE TYPE OF LIFT TO BE USED ON SPECIFIC PROJECT IS TO BE SPECIFIED / SELECTED BY THE VA CENTER OR STATION. LOCATIONS OF SINGLE TRACK LIFT RAILS AND LIGHTING FIXTURES MUST BE COORDINATED BY PROJECT DESIGNER.

320 NSF (29.7 NSM)



1 - L. One-Bed Room (BRMS1)

Space Requirement:

320 NSF (29.7 NSM)

Architectural:

| | |
|-----------------------|--|
| Floor Finish: | Vinyl Composition Tile |
| Base: | Resilient Base (RB) |
| Wall Finish: | Gypsum Wallboard* |
| Ceiling: | Acoustical Tile |
| Ceiling Height: | 9'-0" (2743 mm)/8'-0" (2438 mm) w/wall-mount TV |
| Noise (STC Rating): | 40 |
| Slab Depression: | None |
| Special Construction: | - |
| Hardware: | 7 |
| Doors: | 4'-0" x 7'-0" (1219 mm x 2134 mm) wood or metal, optional view glass panel. Automatic sliding doors into bathroom/toilet. |
| Windows: | Required by code, operable, see PG-18-3, Topic 1, Codes, Standards and Executive Orders |

*Vinyl Wallcovering at Lavatory

HVAC:

| | |
|------------------------|--------------------|
| Temperature/Humidity: | |
| Summer: | 72°F (22°C) @60%RH |
| Winter: | 82°F (28°C) @20%RH |
| Min. Air Changes/Hour: | 6 ACH |
| Pressure: | Neutral (0) |
| Max Noise Criteria: | 35 |

Electrical:

| | |
|------------------|------|
| Lighting Levels: | |
| Gen. Illum: | 10fc |
| Task Illum: | 70fc |
| Over Bed: | 30fc |
| Emergency Power: | |
| Night Lights | |
| One Receptacle | |
| Nurse Call | |

1 - L. One-Bed Room (BRMS1)

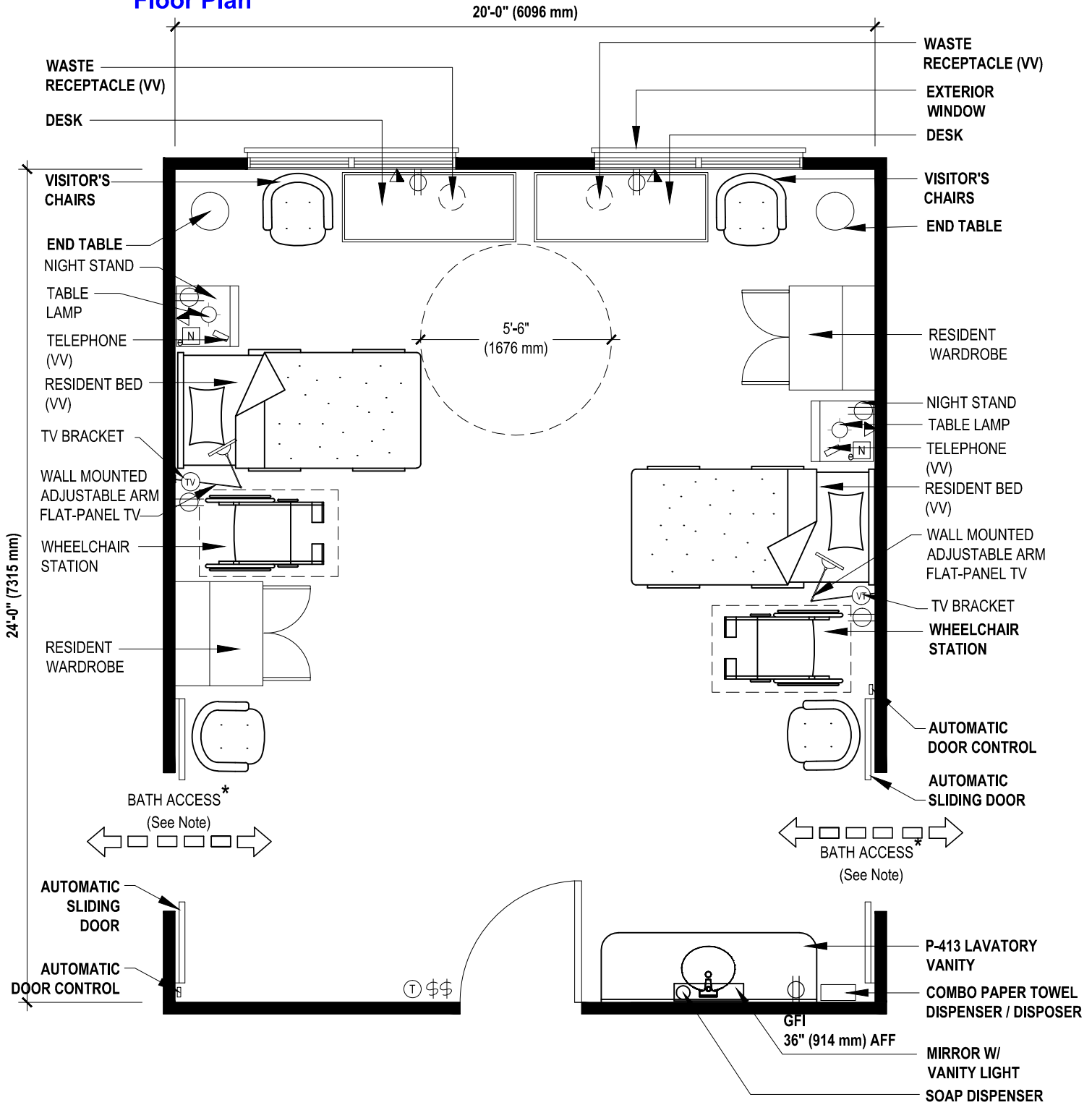
Equipment Table:

| SYMBOL | QUANTITY | | | | AI | DESCRIPTION |
|----------|----------|----|---|---|----|---|
| | A | B | C | D | | |
| | | 1 | | | VV | BED, ELECTRIC, 120 VOLT, 20 AMP, 1067 mm X 2134 mm (42" X 84"), WITH 76 mm (3") BUMPER GUARD |
| | | 1 | | | VV | MATTRESS, BED |
| | | 1 | | | VV | STAND, NIGHT, WITH TOWEL BAR, 470 mm X 464 mm X 876 mm (18-1/2" X 19" X 34-1/2") |
| | | 2 | | | VV | VISITOR'S CHAIR |
| | | AR | | | CC | RECEPTACLE, ELECTRICAL, DUPLEX, 120 VOLT, 20 AMP, FOR POWER OPERATED BED ON WALL AT HEAD OF BED |
| | | 1 | | | CC | LIGHT, NIGHT (FLOURESCENT, OR AS SPECIFIED) |
| | | AR | | | CC | FIXTURE, LIGHTING, FLUORESCENT, FOR GENERAL ILLUMINATION AND READING LIGHT ON HEAD WALL OVER EACH BED, WITH QUIET SWITCH ON FIXTURE WITHIN REACH OF RESIDENT IN BED BY PULL CORD SWITCH |
| | | 1 | | | CC | LIGHT, NIGHT, INCADESCENT, CEILING MOUNTED @ ENTRANCE (PG – 18 – 1, MSC 16510) |
| | | 1 | | | CC | WARDROBE LOCKER, PATIENT, WITH PUSH BUTTON SECURITY LOCK, 36"W X 25½"D X 78"H, WALL MOUNTED |
| | | 1 | | | VV | DRESSER, WITH 3 DRAWERS |
| | | AR | | | CC | RECEPTACLE, ELECTRICAL, DUPLEX, 120 VOLT, 20 AMP, ON WALL, ONE EACH SIDE OF BED |
| | | 1 | | | VV | TELEVISION, FLAT PANEL, WALL MOUNTED WITH ADJUSTABLE ARM. |
| | | 1 | | | VV | BRACKET, TELEVISION |
| | | 1 | | | VV | TABLE LAMP, WALL MOUNTED ABOVE NIGHT STAND |
| | | 1 | | | VV | END TABLE |
| | | 1 | | | CC | MIRROR WITH VANITY LIGHT |
| TYPE S-4 | | 1 | | | CC | VANITY, WITH HIGH PRESSURE PLASTIC LAMINATE COUNTER TOP, MOLDED SELF EDGE AND BACKSPLASH (PG-18-1, MCS 12302) |
| | | 1 | | | CC | DISPENSER, SOAP, LIQUID, WALL MOUNTED |
| | | 1 | | | CC | PAPER TOWEL DISPENSER & DISPOSER (COMBO) |
| | | 1 | | | VV | DESK, 610 mm X 914 mm (24" X 36") |
| | | 1 | | | VV | WASTE RECEPTACLE |
| | | 1 | | | VV | TELEPHONE |
| | | 1 | | | VC | RESIDENT LIFT & TRACK |
| | | 1 | | | CC | CALL, NURSES PANEL, WITH CORRIDOR SIGNAL LIGHT (PG-18-1, MCS 16761) |
| P-413 | | 1 | | | CC | LAVATORY COUNTER MOUNTED, 19" DIAMETER WRIST BLADE HANDLES, GOOSENECK SPOUT (PG-18-1, MCS 15450) |

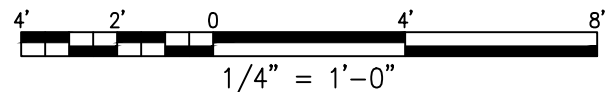
**TABLE 4.1-L
ONE-BED ROOM (BRMS1)**

2 - L. Two-Bed Room (BRMS2)

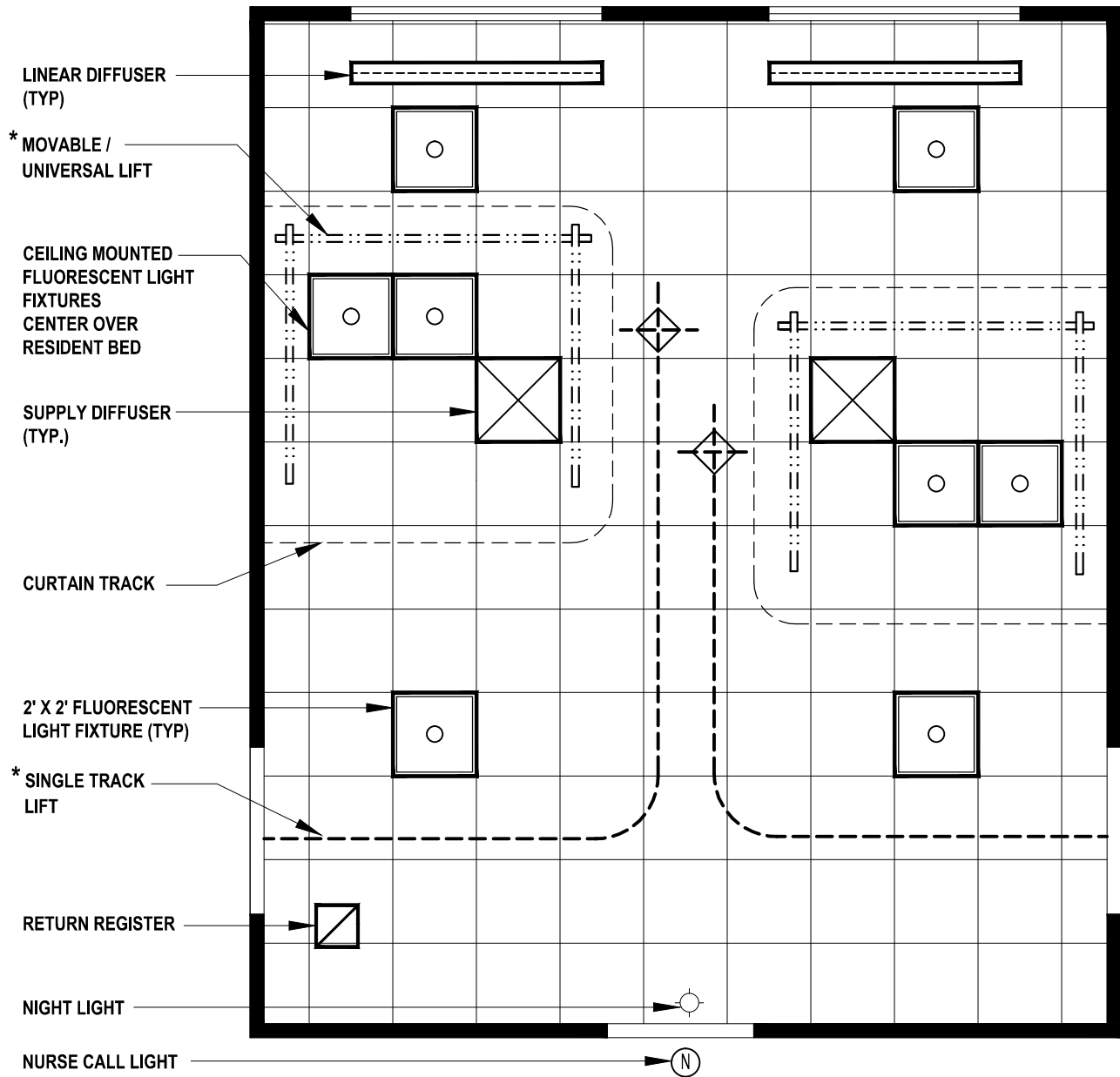
Floor Plan



480 NSF (44.6 NSM)

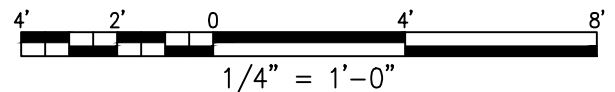


2 - L. Two-Bed Room (BRMS2) Reflected Ceiling Plan



NOTE: * BOTH SINGLE TRACK & MOVABLE OR UNIVERSAL TRACK LIFT SYSTEMS ARE INDICATED IN THE PLAN AS AN OPTION. THE TYPE OF LIFT TO BE USED ON SPECIFIC PROJECT IS TO BE SPECIFIED / SELECTED BY THE VA CENTER OR STATION. LOCATIONS OF SINGLE TRACK LIFT RAILS AND LIGHTING FIXTURES MUST BE COORDINATED BY PROJECT DESIGNER.

480 NSF (44.6 NSM)



2 - L. Two-Bed Room (BRMS2)

Space Requirement:

480 NSF (44.6 NSM)

Architectural:

| | |
|-----------------------|--|
| Floor Finish: | Vinyl Composition Tile |
| Base: | Resilient Base (RB) |
| Wall Finish: | Gypsum Wallboard* |
| Ceiling: | Acoustical Tile |
| Ceiling Height: | 9'-0" (2743 mm)/8'-0" (2438 mm) w/wall-mount TV |
| Noise (STC Rating): | 40 |
| Slab Depression: | None |
| Special Construction: | - |
| Hardware: | 7 |
| Doors: | 4'-0" x 7'-0" (1219 mm x 2134 mm) wood or metal, optional view glass panel. Automatic sliding doors into bathroom/toilet. |
| Windows: | Required by code, operable, see PG-18-3, Topic 1, Codes, Standards and Executive Orders. |

*Vinyl Wallcovering at Lavatory

HVAC:

| | |
|------------------------|--------------------|
| Temperature/Humidity: | |
| Summer: | 72°F (22°C) @60%RH |
| Winter: | 82°F (28°C) @20%RH |
| Min. Air Changes/Hour: | 6 ACH |
| Pressure: | Neutral (0) |
| Max Noise Criteria: | 35 |

Electrical:

| | |
|--|------|
| Lighting Levels: | |
| Gen. Illum: | 10fc |
| Task Illum: | 70fc |
| Over Bed: | 30fc |
| Emergency Power: | |
| Night Lights | |
| Vanity Light | |
| Two Receptacles (One per resident bed) | |
| Nurse Call | |

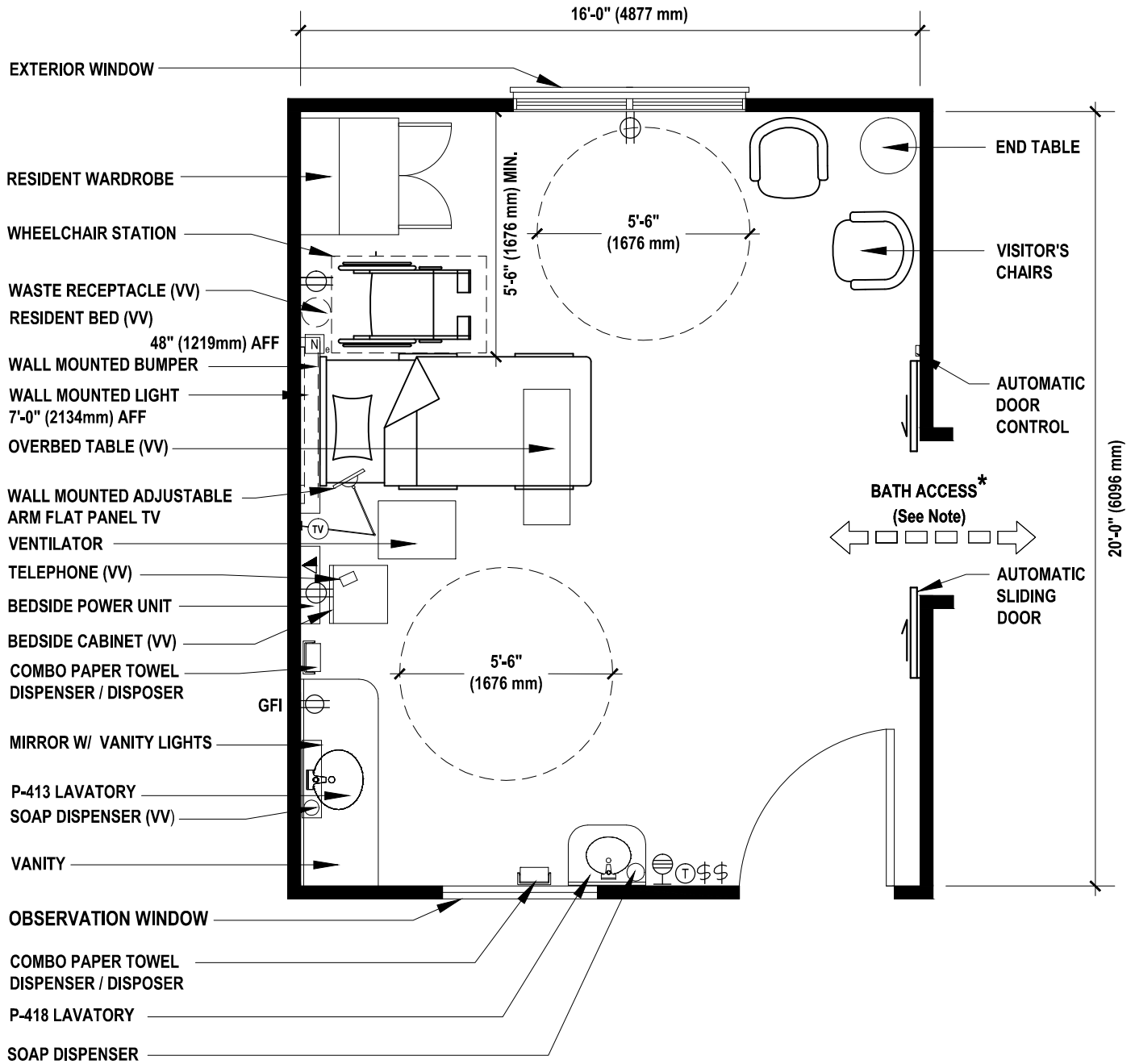
2 - L. Two-Bed Room (BRMS2)

Equipment Table:

| SYMBOL | QUANTITY | | | | AI | DESCRIPTION |
|----------|----------|----|---|---|----|---|
| | A | B | C | D | | |
| | | 2 | | | VV | BED, ELECTRIC, 120 VOLT, 20 AMP, 1067 mm X 2134 mm (42" X 84"), WITH 76 mm (3") BUMPER GUARD |
| | | 2 | | | VV | MATTRESS, BED |
| | | 2 | | | VV | STAND, NIGHT, WITH TOWEL BAR, 470 mm X 464 mm X 876 mm (18-1/2" X 19" X 34-1/2") |
| | | 4 | | | VV | VISITOR'S CHAIR |
| | | AR | | | CC | RECEPTACLE, ELECTRICAL, DUPLEX, 120 VOLT, 20 AMP, FOR POWER OPERATED BED ON WALL AT HEAD OF BED |
| | | 2 | | | CC | LIGHT, NIGHT (FLOURESCENT, OR AS SPECIFIED) |
| | | AR | | | CC | FIXTURE, LIGHTING, FLUORESCENT, FOR GENERAL ILLUMINATION AND READING LIGHT ON HEAD WALL OVER EACH BED, WITH QUIET SWITCH ON FIXTURE WITHIN REACH OF RESIDENT IN BED BY PULL CORD SWITCH |
| | | 1 | | | CC | LIGHT, NIGHT, INCADESCENT, CEILING MOUNTED @ ENTRANCE (PG – 18 – 1, MSC 16510) |
| | | 2 | | | CC | WARDROBE LOCKER, PATIENT, WITH PUSH BUTTON SECURITY LOCK, 36"W X 25½"D X 78"H, WALL MOUNTED |
| | | AR | | | CC | RECEPTACLE, ELECTRICAL, DUPLEX, 120 VOLT, 20 AMP, ON WALL, ONE EACH SIDE OF BED |
| | | 2 | | | VV | TELEVISION, FLAT PANEL, WALL MOUNTED WITH ADJUSTABLE ARM. |
| | | 2 | | | VV | BRACKET, TELEVISION |
| | | 2 | | | VV | TABLE LAMP, WALL MOUNTED ABOVE NIGHT STAND |
| | | 2 | | | VV | END TABLE |
| | | 1 | | | CC | MIRROR WITH VANITY LIGHT |
| TYPE S-4 | | 1 | | | CC | VANITY, WITH HIGH PRESSURE PLASTIC LAMINATE COUNTER TOP, MOLDED SELF EDGE AND BACKSPLASH (PG-18-1, MCS 12302) |
| | | 1 | | | CC | DISPENSER, SOAP, LIQUID, WALL MOUNTED |
| | | 1 | | | CC | PAPER TOWEL DISPENSER & DISPOSER (COMBO) |
| | | 2 | | | VV | DESK, 610 mm X 914 mm (24" X 36") |
| | | 2 | | | VV | WASTE RECEPTACLE |
| | | 2 | | | VV | TELEPHONE |
| | | 1 | | | VC | RESIDENT LIFT & TRACK |
| | | 2 | | | CC | CALL, NURSES PANEL, WITH CORRIDOR SIGNAL LIGHT (PG-18-1, MCS 16761) |
| P-413 | | 1 | | | CC | LAVATORY COUNTER MOUNTED, 19" DIAMETER WRIST BLADE HANDLES, GOOSENECK SPOUT (PG-18-1, MCS 15450) |

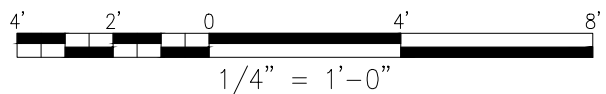
**TABLE 4.2-L
TWO-BED ROOM (BRMS2)**

**3 - L. Special Care Room (BRMS1)
Floor Plan**

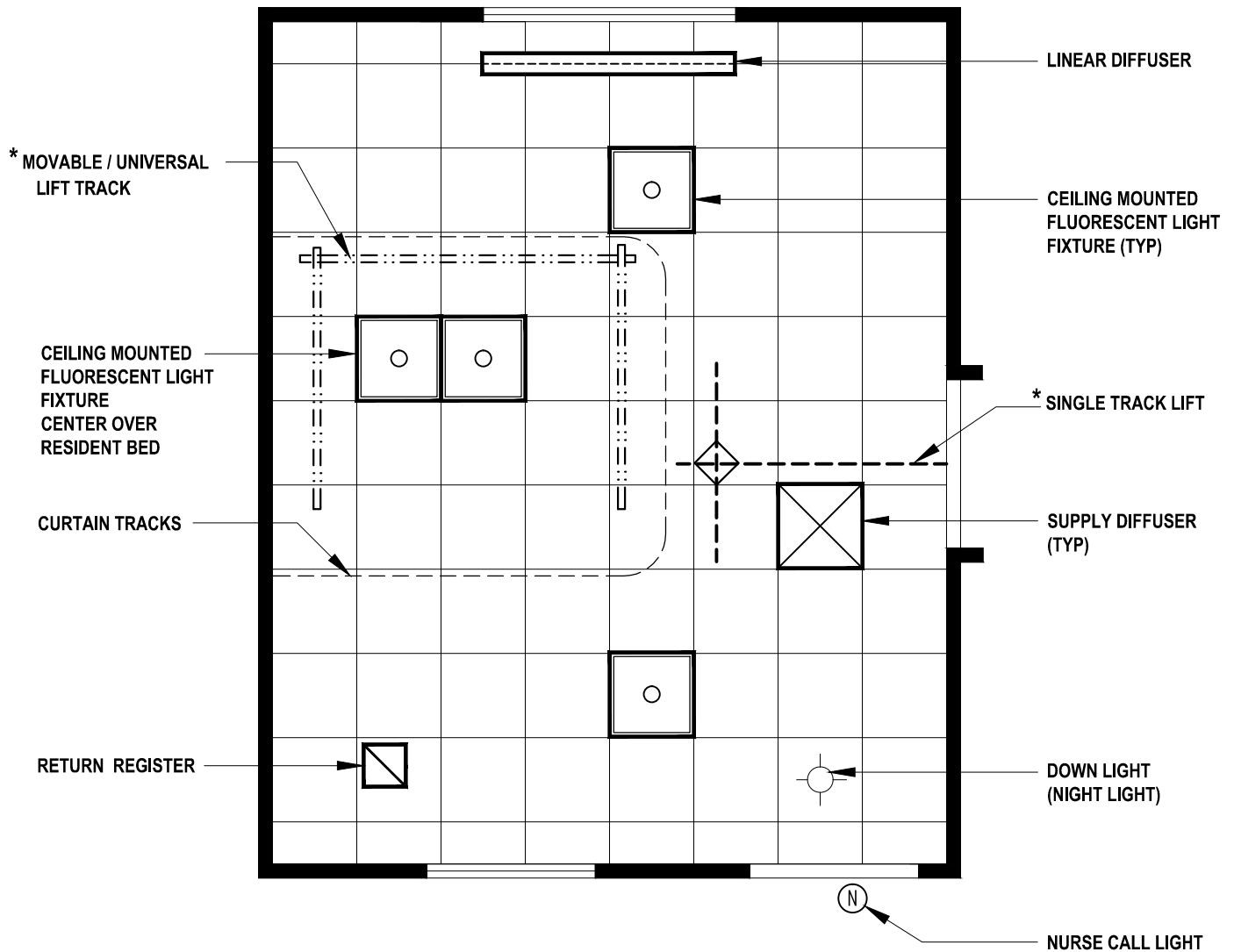


* Note: For Resident (Litter) Bathroom Configuration See Guideplate No. 4 in Chapter 3 of this Design Guide.

320 NSF (29.7 NSM)

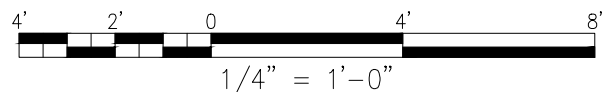


3 - L. Special Care Room (BRMS1) Reflected Ceiling Plan



NOTE: * BOTH SINGLE TRACK & MOVABLE OR UNIVERSAL TRACK LIFT SYSTEMS ARE INDICATED IN THE PLAN AS AN OPTION. THE TYPE OF LIFT TO BE USED ON SPECIFIC PROJECT IS TO BE SPECIFIED / SELECTED BY THE VA CENTER OR STATION. LOCATIONS OF SINGLE TRACK LIFT RAILS AND LIGHTING FIXTURES MUST BE COORDINATED BY PROJECT DESIGNER.

320 NSF (29.7 NSM)



3 - L. Special Care Room (BRMS1)

Space Requirement:

320 NSF (29.7 NSM)

Architectural:

| | |
|-----------------------|--|
| Floor Finish: | Vinyl Composition Tile |
| Base: | Vinyl |
| Wall Finish: | Gypsum Wallboard* |
| Ceiling: | Acoustical Tile |
| Ceiling Height: | 9'-0" (2743 mm)/8'-0" (2438 mm) w/wall-mount TV |
| Noise (STC Rating): | 35 |
| Slab Depression: | None |
| Special Construction: | - |
| Hardware: | 7 |
| Doors: | 4'-0" x 7'-0" (1219 mm x 2134 mm) wood or metal, optional view glass panel. |
| Windows: | Required by code, operable, see PG-18-3, Topic 1, Codes, Standards and Executive Orders. |

*Vinyl Wallcovering at Lavatory

HVAC:

| | |
|------------------------|--------------------|
| Temperature/Humidity: | |
| Summer: | 72°F (22°C) @60%RH |
| Winter: | 82°F (28°C) @20%RH |
| Min. Air Changes/Hour: | 6 ACH |
| Pressure: | Neutral (0) |
| Max Noise Criteria: | 40 |

Electrical:

| | |
|------------------|-------|
| Lighting Levels: | |
| Gen. Illum: | 10 fc |
| Task Illum: | 70 fc |
| Over Bed: | 30 fc |
| Emergency Power: | |
| Medical Gases | |
| Night Lights | |
| Vanity Lights | |
| One Receptacle | |
| Nurse Call | |

3 - L. Special Care Room (BRMS1)

Equipment Table:

| SYMBOL | QUANTITY | | | | AI | DESCRIPTION |
|------------|----------|---|---|---|----|--|
| | A | B | C | D | | |
| | | 1 | | | VV | BED WITH MATTRESS, HOSPITAL PATIENT, ELECTRIC, HI-LO, 42"W X 94"L WITH 3" DIA. WHEELS AND TRAPEZE BAR |
| | | 1 | | | CC | BUMPER GUARD, 2" DEEP, WALL-MOUNTED OFF THE FLOOR BEHIND HEAD OF BED |
| | | 1 | | | VV | TABLE, OVER-BED, ADJUSTABLE HEIGHT, 33"W X 14" D, ON CASTERS |
| | | 1 | | | VV | CABINET, BEDSIDE, PORTABLE 20"W X 16"D X 34 ½"H |
| | | 2 | | | VV | CHAIR, VISITOR |
| | | 1 | | | VV | END TABLE |
| | | 1 | | | CC | WARDROBE LOCKER, PATIENT, WITH PUSH BUTTON SECURITY LOCK, 36"W X 25 ½"D X 78"H (TOP SHELF FOR PILLOW AND BLANKET STORAGE) WALL MOUNTED |
| | | 1 | | | CC | PREFABRICATED BEDSIDE POWER UNIT: TYPE 3, PG-18-4, SD 16630-12.DWG and 16685-4.DWG |
| | | 1 | | | CC | OUTLET, MASTER TELEVISION ANTENNA (H-08-1, MCS 16781: H-08-3, CS 864-1) |
| | | 1 | | | VV | BRACKET FOR TELEVISION RECEIVER |
| | | 1 | | | VV | TELEVISION, FLAT PANEL, WALL MOUNTED, ADJUSTABLE ARM |
| | | 1 | | | VV | LIGHT, BED (ON WALL OVER BED 7 FEET ABOVE FLOOR) PG-18-1, MCS 16510) |
| | | 1 | | | CC | LIGHT, FLUORESCENT, FOR EXAMINATION ILLUMINATION, CEILING MOUNTED OVER EACH BED (PG-18-1, MCS 16510) |
| | | 1 | | | CC | LIGHT, NIGHT, INCANDESCENT, CEILING MOUNTED AT ENTRANCE TO BED ROOM WITH SWITCH AT ENTRANCE TO BED ROOM (PG-18-1, MCS 16510) |
| TYPE S - 4 | | 1 | | | CC | VANITY, WITH HIGH PRESSURE PLASTIC LAMINATE COUNTER TOP, MOLDED SELF EDGE AND BACKSPLASH (PG-18-1, MCS 12302) |
| P - 413 | | 1 | | | CC | LAVATORY COUNTER MOUNTED, 19" DIAMETER WRIST BLADE HANDLES, GOOSENECK SPOUT (PG-18-1 MCS 15450)) |
| | | 1 | | | CC | DISPENSER, SOAP, LIQUID, WALL MOUNTED |
| | | 1 | | | CC | MIRROR, 24"W X 36"L (PG-18-1, MCS 10800) |
| | | 1 | | | CC | LIGHT, FLUORESCENT, VERTICAL BARS WALL MOUNTED AT EACH SIDE OF THE MIRROR (PG-18-1, MCS 16510) |
| | | 2 | | | CC | DISPENSER, PAPER TOWEL AND DISPOSAL COMBINATION UNIT (PG-18-1, MCS 10800) |
| | | 1 | | | CC | RECEPTACLE, ELECTRICAL, 120 VOLT, 20 AMP (PG-18-1, MCS 16140) |

**TABLE 4.3-L
SPECIAL CARE ROOM (BRMS1)**

3 - L. Special Care Room (BRMS1)

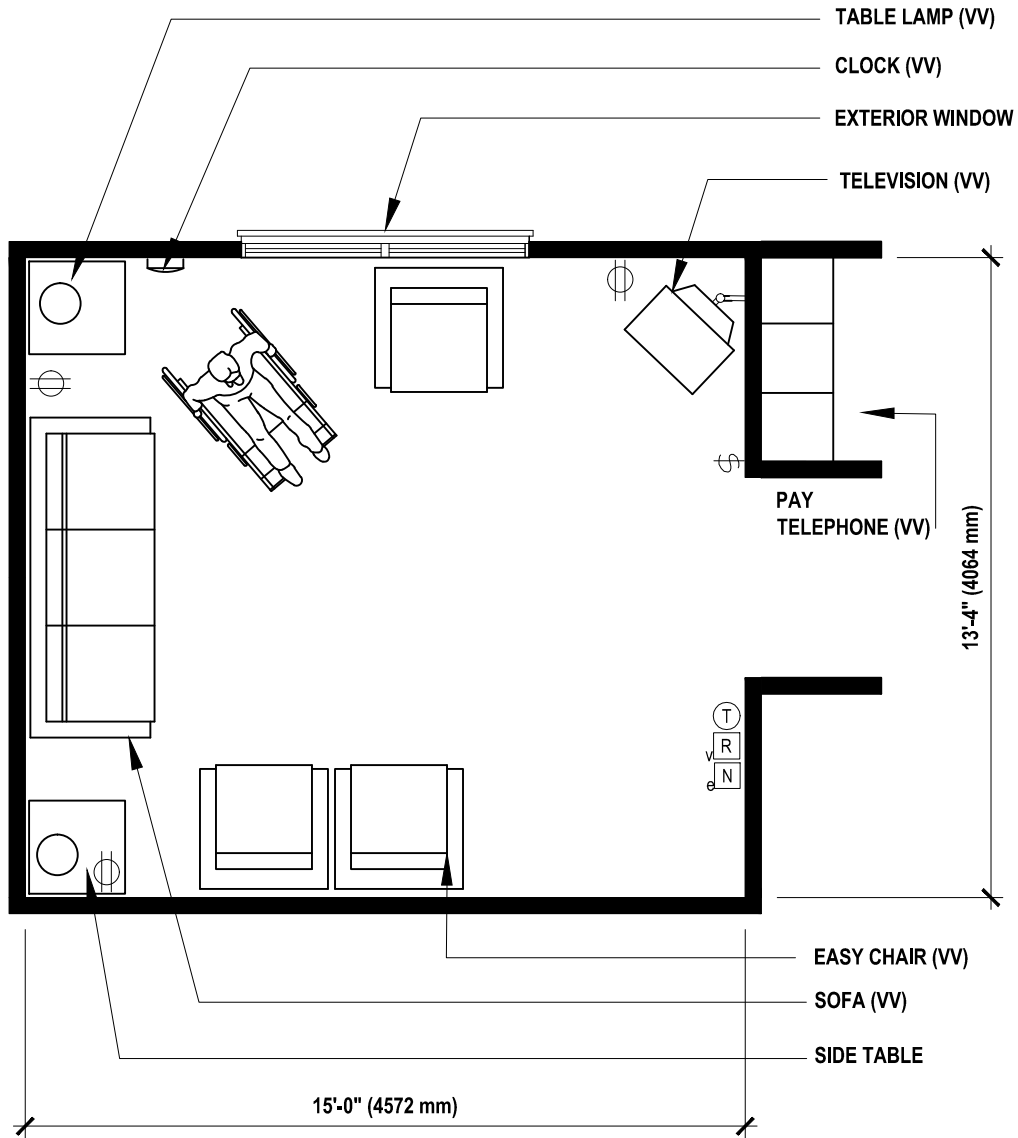
Equipment Table:

| SYMBOL | QUANTITY | | | | AI | DESCRIPTION |
|---------|----------|---|---|---|----|--|
| | A | B | C | D | | |
| | | 1 | | | VV | RECEPTACLE, ELECTRICAL, DUPLEX, 120 VOLT, 20 AMP (PG-18-1, MCS 16140) |
| | | 1 | | | CC | CALL, NURSES PANEL, WITH CORRIDOR SIGNAL LIGHT (PG-18-1, MCS 16761) |
| | | 1 | | | CC | OBSERVATION WINDOW ON CORRIDOR WALL, FIXED FRAME WITH INTEGRAL BLIND CONTROLLED FROM INSIDE THE RESIDENT ROOM. |
| P - 418 | | 1 | | | CC | STAFF SINK, LAVATORY |
| | | 1 | | | CC | CEILING LIFT AND TRACK |
| | | 1 | | | VV | TELEPHONE |
| | | 1 | | | VV | WASTE RECEPTACLE |
| | | 1 | | | CC | PAPER TOWEL DISPENSER |

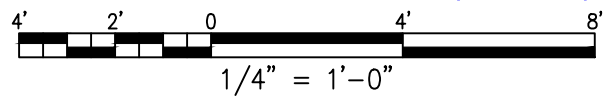
**TABLE 4.3-L (CONT'D)
SPECIAL CARE ROOM (BRMS1)**

Page Left Blank Intentionally

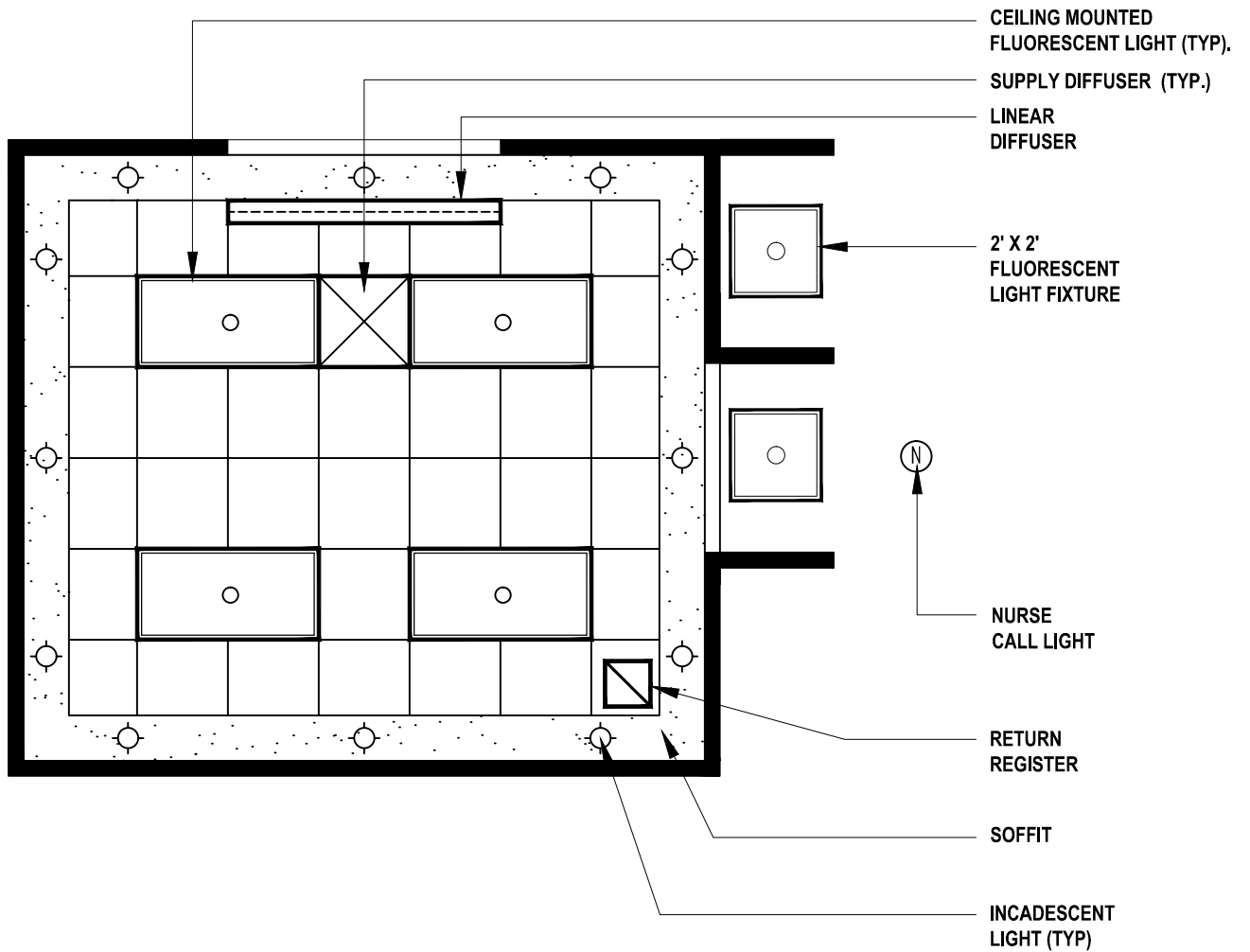
4 - L. Visitor Lounge (WRC0R)
Floor Plan



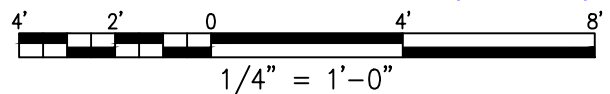
200 NSF (18.6 NSM)



4 - L. Visitor Lounge (WRC0R)
Reflected Ceiling Plan



200 NSF (18.6 NSM)



4 - L. Visitor Lounge (WRC02)

Space Requirement:

200 NSF (18.6 NSM)

Architectural:

| | |
|-----------------------|--|
| Floor Finish: | Vinyl Composition Tile |
| Base: | Vinyl |
| Wall Finish: | Gypsum Wallboard* |
| Ceiling: | Acoustical Tile |
| Ceiling Height: | 9'-0" (2743 mm)/8'-0" (2438 mm) w/wall-mount TV |
| Noise (STC Rating): | 35 |
| Slab Depression: | None |
| Special Construction: | - |
| Hardware: | 7 |
| Doors: | 4'-0" x 7'-0" (1219 mm x 2134 mm) wood or metal, optional view glass panel. |
| Windows: | Required by code, operable, see PG-18-3, Topic 1, Codes, Standards and Executive Orders. |

*Vinyl Wallcovering at Lavatory

HVAC:

| | |
|------------------------|--------------------|
| Temperature/Humidity: | |
| Summer: | 72°F (22°C) @60%RH |
| Winter: | 82°F (28°C) @20%RH |
| Min. Air Changes/Hour: | 6 ACH |
| Pressure: | Neutral (0) |
| Max Noise Criteria: | 40 |

Electrical:

Lighting Levels:

 Three Level Fluorescent:

| | |
|-------|------|
| High: | 60fc |
| Med: | 45fc |
| Low: | 20fc |

 Incandescent

 Wall-Washers

 on Dimmer: 0fc-5fc

Emergency Power:

 One Ceiling Light

 Nurse Call

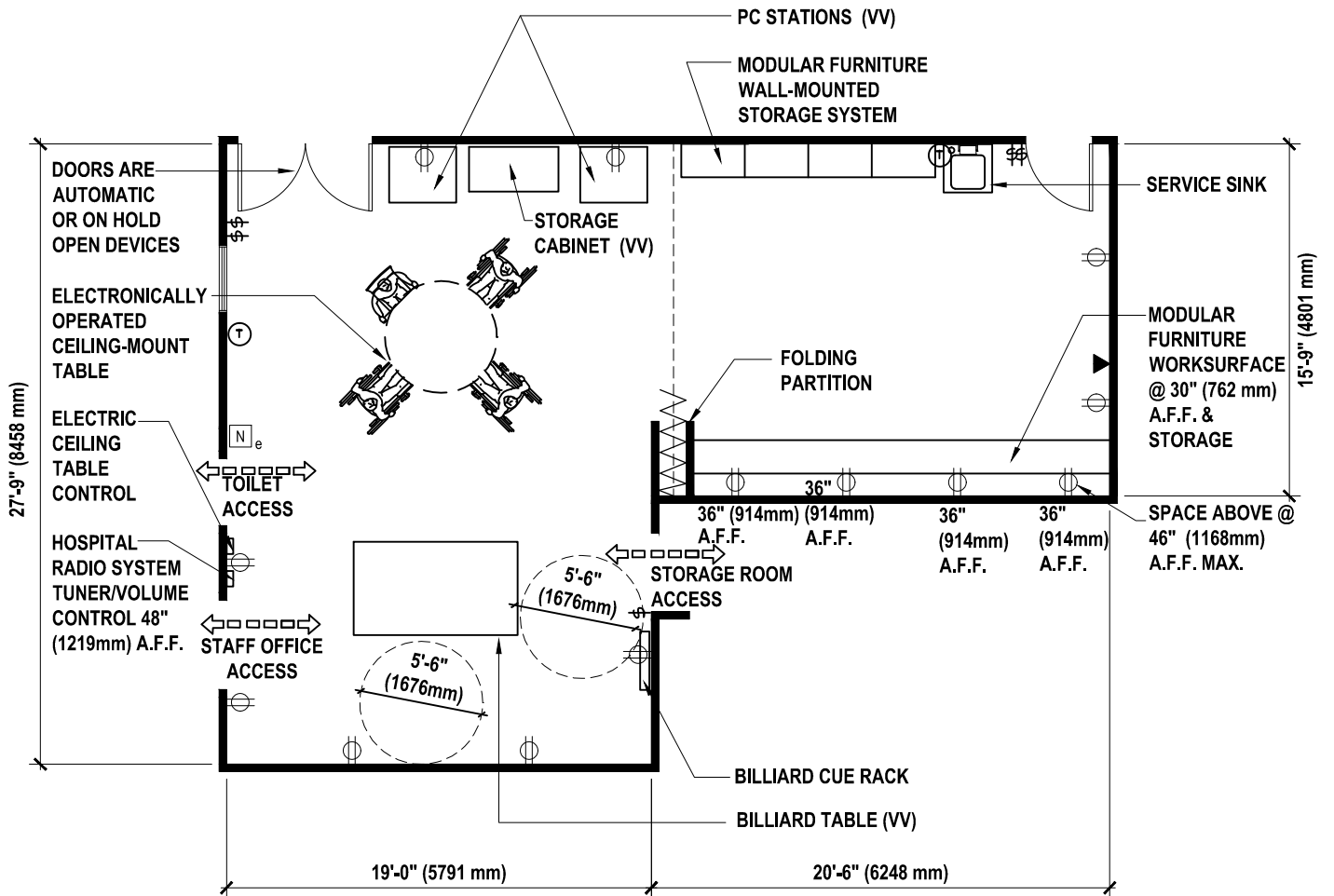
4 - L. Visitor Lounge (WRC02)

Equipment Table:

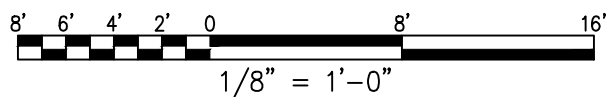
| SYMBOL | QUANTITY | | | | AI | DESCRIPTION |
|--------|----------|----|---|---|----|--|
| | A | B | C | D | | |
| | | 1 | | | VV | SOFA, 3 SEAT UPHOLSTERED, APPROX 83"W X 33"D X 28"H |
| | | 3 | | | VV | EASY CHAIR, UPHOLSTERED, REGULAR |
| | | 2 | | | VV | TABLE, SIDE, APPROX 41"W X 20"D X 15"H |
| | | 1 | | | CC | OUTLET, MASTER TELEVISION ANTENNA (H-08-1, MCS 16781: H-08-3, CS 864-1) |
| | | 1 | | | VV | BRACKET FOR TELEVISION RECEIVER, WALL-MOUNTED |
| | | 1 | | | VV | RECEIVER, TELEVISION WALL MOUNTED |
| | | 1 | | | CC | RECEPTACLE, ELECTRICAL, WALL MOUNTED 120 VOLT, 20 AMP FOR WALL MOUNTED TELEVISION SET (PG-18-1, MCS 16140) |
| | | 1 | | | VV | TELEVISION, FLAT PANEL, WALL MOUNTED, ADJUSTABLE ARM |
| | | 1 | | | VV | CLOCK, BATTERY OPERATED |
| | | 2 | | | VV | LAMP, TABLE (FIXED & HARD WIRED) |
| | | 1 | | | VV | PAY TELEPHONE |
| | | AR | | | CC | LIGHT, FLOURESCENT, GENERAL LIGHT (PG – 18 – 1, MSC 16510) |
| | | 1 | | | CC | LIGHT, NIGHT, INCADESCENT, CEILING MOUNTED @ ENTRANCE (PG – 18 – 1, MSC 16510) |
| | | 1 | | | CC | CALL, NURSES PANEL, WITH CORRIDOR SIGNAL LIGHT (PG-18-1, MCS 16761) |

TABLE 4.4-L
VISITOR LOUNGE (WRC02)

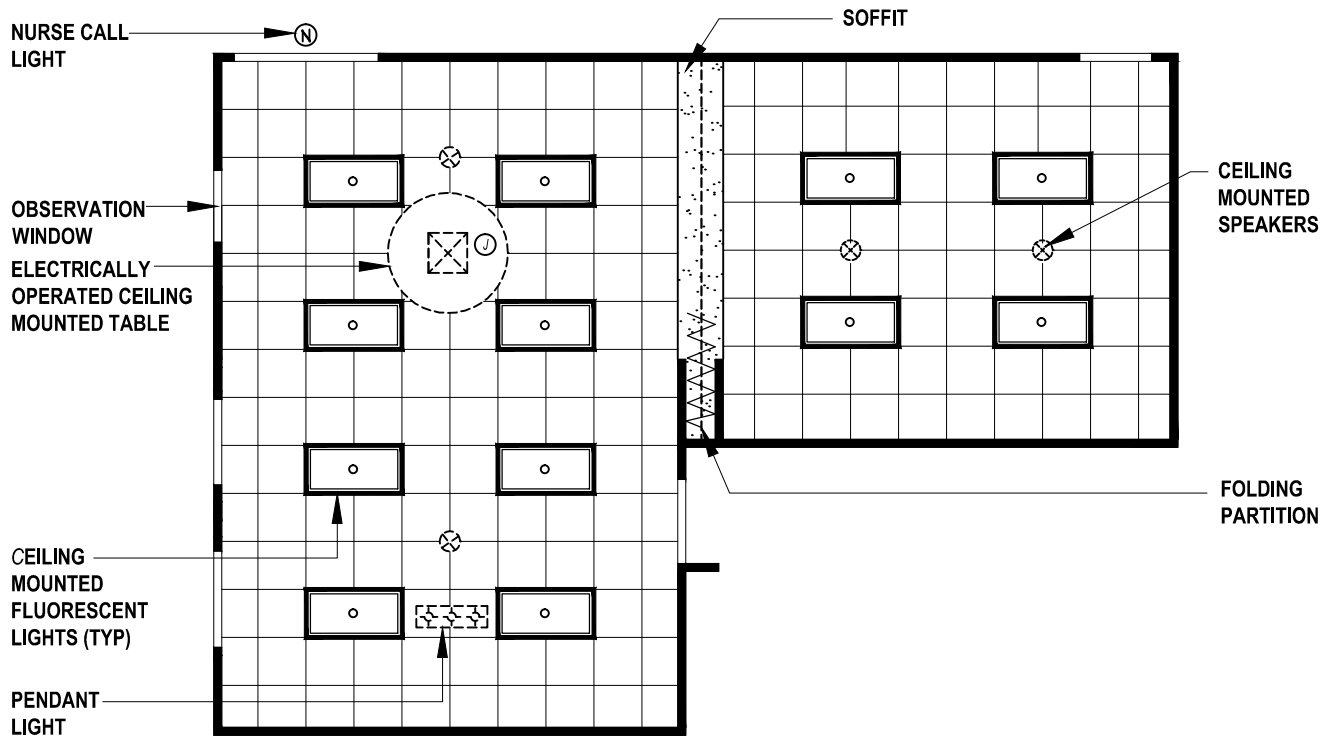
5 - L. Recreation Therapy (PTES1) Floor Plan



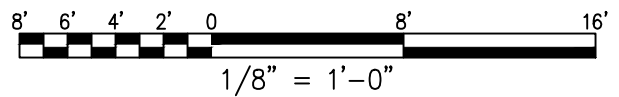
0-30 Beds: 850 NSF (79 NSM)
 31-60 Beds: 1100 NSF (102.2 NSM)
 Over 60 Beds: 1400 NSF (130.1 NSM)



5 - L. Recreation Therapy (PTES1)
Reflected Ceiling Plan



0-30 Beds: 850 NSF (79 NSM)
 31-60 Beds: 1100 NSF (102.2 NSM)
 Over 60 Beds: 1400 NSF (130.1 NSM)



5 - L. Recreation Therapy (PTES1)

Space Requirement:

0-30 Beds: 850 NSF (79 NSM)

31-60 Beds: 1100 NSF (102.2 NSM)

60 or more: 1400 NSF (130.1 NSM)

Architectural:

Floor Finish: Vinyl Composition Tile

Base: Vinyl

Wall Finish: GWB/Vinyl Fabric Wallcovering

Ceiling: Acoustical Tile

Ceiling Height: 10'-0" (3048 mm)/9'-0" (2743 mm) w/wall-mount TV

Noise (STC Rating): 45

Slab Depression: None

Special Construction: -

Hardware: 82

Doors: 2@ 3'-0" x 7'-0" (914 mm x 2133 mm) wood or metal, upper half laminated safe glass.

Windows: Required by code, operable, see PG-18-3, Topic 1, Codes, Standards and Executive Orders.

*Vinyl Wallcovering at Lavatory

HVAC:

Temperature/Humidity:

Summer: 72°F (22°C) @60%RH

Winter: 82°F (28°C) @20%RH

Min. Air Changes/Hour: 6 ACH

Pressure: Neutral (0)

Max Noise Criteria: 40

Electrical:

Lighting Levels:

Gen. Illum: 30fc

Emergency Power:

One Ceiling Light

Nurse Call

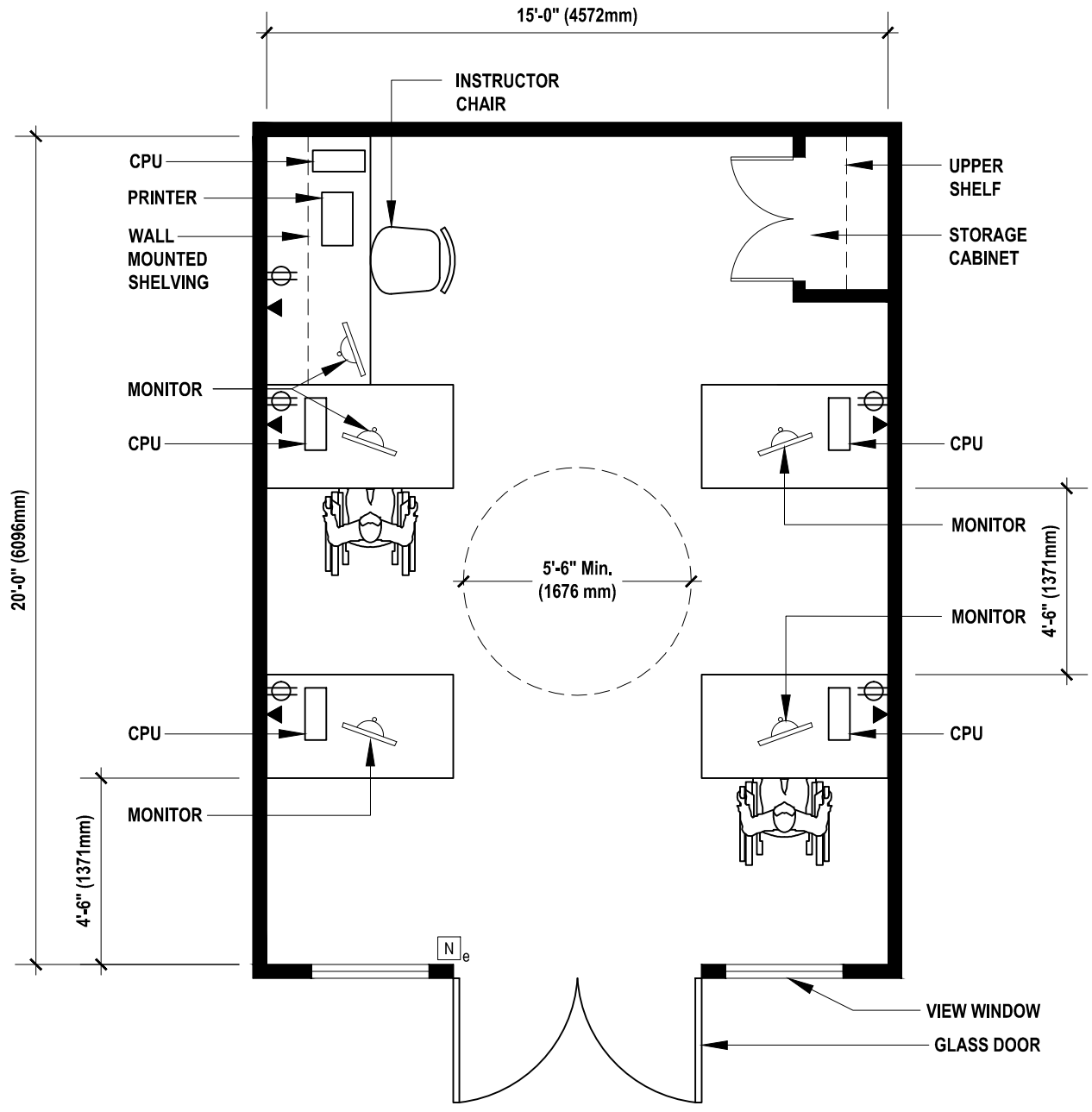
5 - L. Recreation Therapy (PTES1)

Equipment Table:

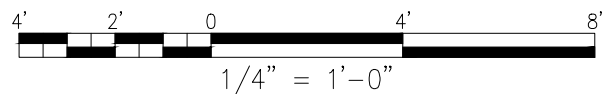
| SYMBOL | QUANTITY | | | | AI | DESCRIPTION |
|--------|----------|----|---|---|----|--|
| | A | B | C | D | | |
| | | 1 | | | CC | DOOR, FOLDING |
| | | 1 | | | VV | TABLE, POOL |
| | | 1 | | | CC | FIXTURE, LIGHTING, FLOURESCENT, DROP TYPE, OVER POOL TABLE (PG-18-1, MCS 16510) |
| | | 1 | | | VV | RACK, CUE, WALL MOUNTED |
| | | AR | | | VV | TABLE, PING PONG, PORTABLE |
| | | AR | | | VV | CHAIR STACKING |
| | | AR | | | VV | BULLETIN BOARD, 48" W X 36" H |
| | | AR | | | VV | SHUFFLEBOARD TABLE 24"W X 96I X 36"H |
| | | AR | | | VV | TABLE, GAME, PORTABLE, ELECTRONIC, 120 VOLT, 20 AMP |
| | | AR | | | VV | TABLE, GAME |
| | | AR | | | CC | RECEPTACLE, ELECTRICAL, DUPLEX, 120 VOLT, 20 AMP (PG-18-1, MCS 16140) |
| | | AR | | | VV | CLOCK, BATTERY OPERATED |
| | | 1 | | | VV | TABLE, SUSPENDED, 60" DIAMETER (SEE ARCHITECTURAL AND ELECTRICAL SERVICE FOR REQUIREMENTS FOR SUSPENDED TABLE) |
| | | AR | | | CC | CEILING SPEAKERS WITH CHANNEL SELECTOR AND VOLUME CONTROL, HOSPITAL RADIO SYSTEM (PG-18-1, MCS 16771) |
| | | 1 | | | CC | CALL, NURSES PANEL, WITH CORRIDOR SIGNAL LIGHT (PG-18-1, MCS 16761) |

**TABLE 4.5-L
RECREATION THERAPY (PTES1)**

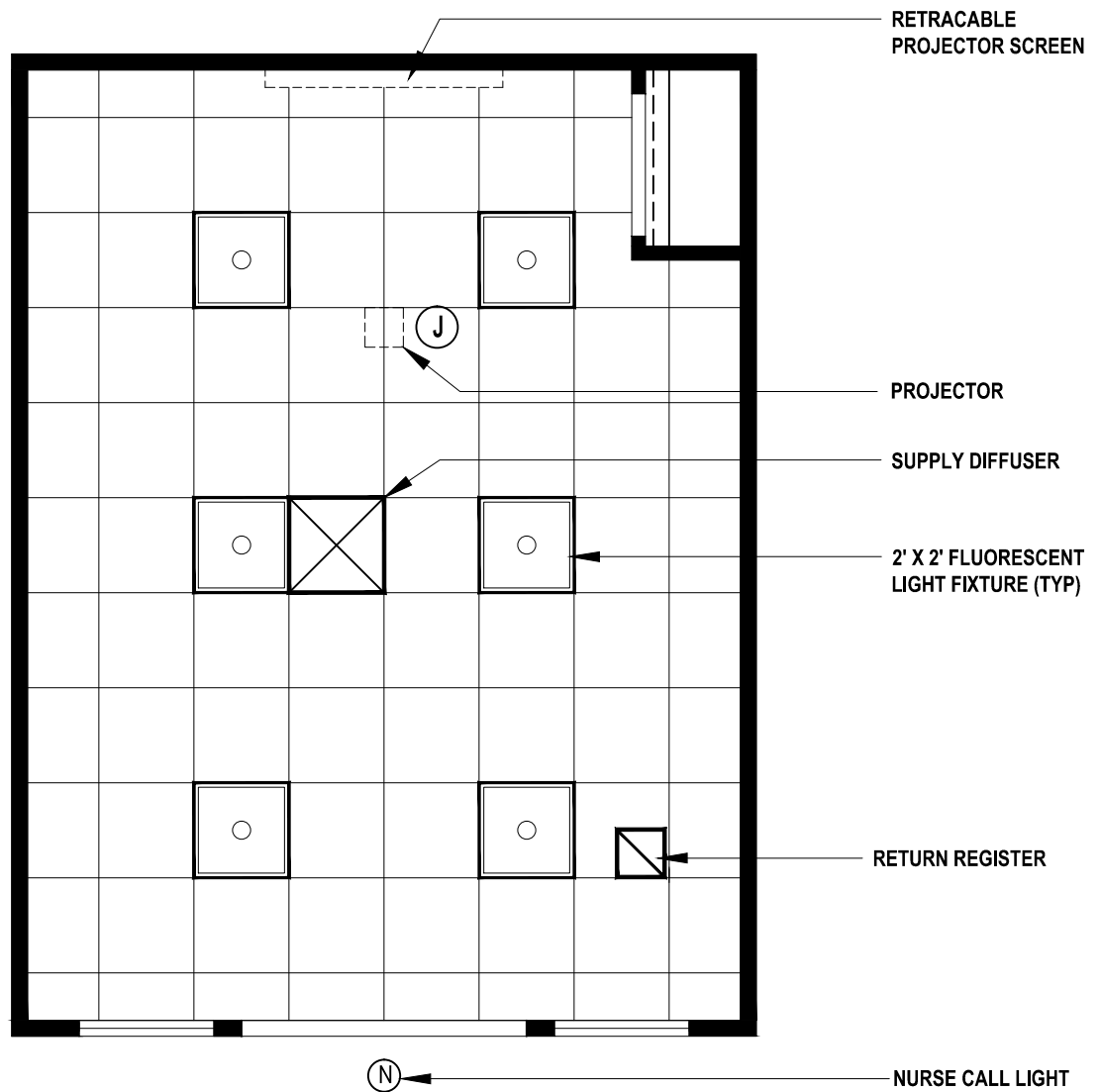
6 - L. Computer Lab (CRA02)
Floor Plan



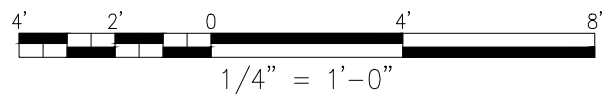
300 NSF (27.9 NSM)



6 - L. Computer Lab (CRA02) Reflected Ceiling Plan



300 NSF (27.9 NSM)



6 - L. Computer Lab (CRA02)

Space Requirement:

300 NSF (27.9 NSM)

Architectural:

| | |
|-----------------------|--|
| Floor Finish: | Vinyl Composition Tile |
| Base: | Vinyl |
| Wall Finish: | Gypsum Wallboard – Vinyl Coated Fabric Wallcovering |
| Ceiling: | Acoustical Tile |
| Ceiling Height: | 9'-0" (2743 mm) |
| Noise (STC Rating): | 35 |
| Slab Depression: | None |
| Special Construction: | - |
| Hardware: | 126 |
| Doors: | 2 @ 3'-0" x 7'-0" (914 mm x 2134 mm) wood or metal, optional view glass panel. |
| Windows: | Desirable, see PG – 18 – 3, Topic 1, Codes and Standards. |

HVAC:

| | |
|------------------------|--------------------|
| Temperature/Humidity: | |
| Summer: | 72°F (22°C) @60%RH |
| Winter: | 82°F (28°C) @20%RH |
| Min. Air Changes/Hour: | 6 ACH |
| Pressure: | Neutral (0) |
| Max Noise Criteria: | 40 |

Electrical:

| | |
|--|---------|
| Lighting Levels: | |
| Three Level Fluorescent: | |
| High: | 60fc |
| Med: | 45fc |
| Low: | 20fc |
| Incandescent Wall-Washers on Dimmer: | 0fc-5fc |
| Emergency Power: | |
| One Ceiling Light | |
| One Receptacle | |
| Nurse Call | |

6 - L. Computer Lab (CRA02)

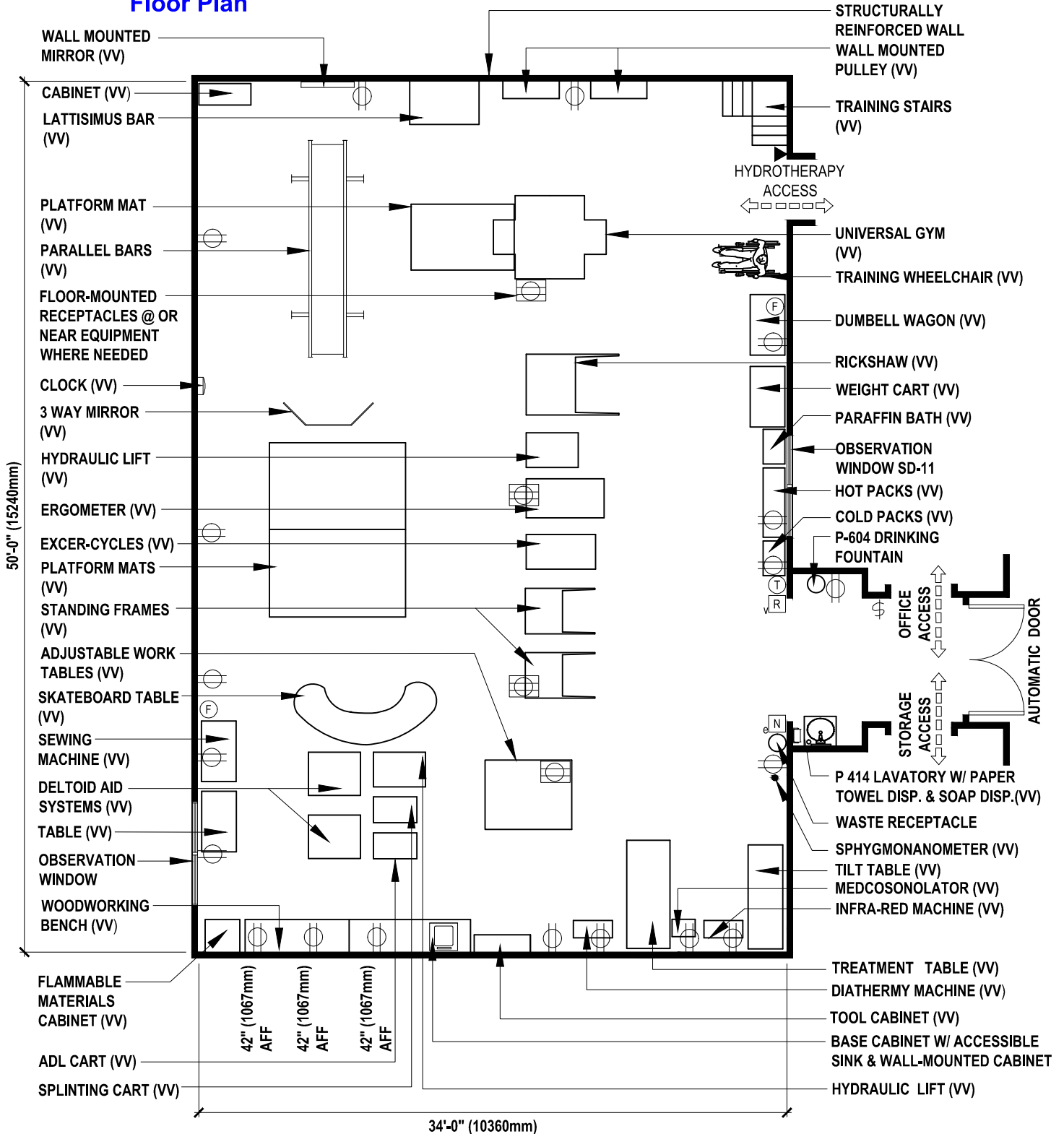
Equipment Table:

| SYMBOL | QUANTITY | | | | AI | DESCRIPTION |
|--------|----------|----|---|---|----|---|
| | A | B | C | D | | |
| | | AR | | | CC | COUNTER WITH STORAGE CABINETS ABOVE, WALL MOUNTED |
| | | 5 | | | VV | CPU'S |
| | | 5 | | | VV | MONITORS |
| | | AR | | | VV | PRINTERS |
| | | AR | | | VV | CHAIRS, INSTRUCTOR |
| | | 1 | | | VV | DESK, INSTRUCTOR |
| | | 1 | | | CC | NURSE CALL, EMERGENCY STATION WITH CORRIDOR SIGNAL LIGHT CONNECTED TO NEAREST NURSE CONTROL STATION |
| | | AR | | | CC | RECEPTACLE, ELECTRICAL, DUPLEX, 120 VOLT, 20 AMP |

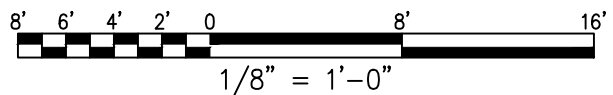
**TABLE 4.6-L
COMPUTER LAB (CRA02)**

7 - L. PT / KT / OT Clinic (PTES1)

Floor Plan

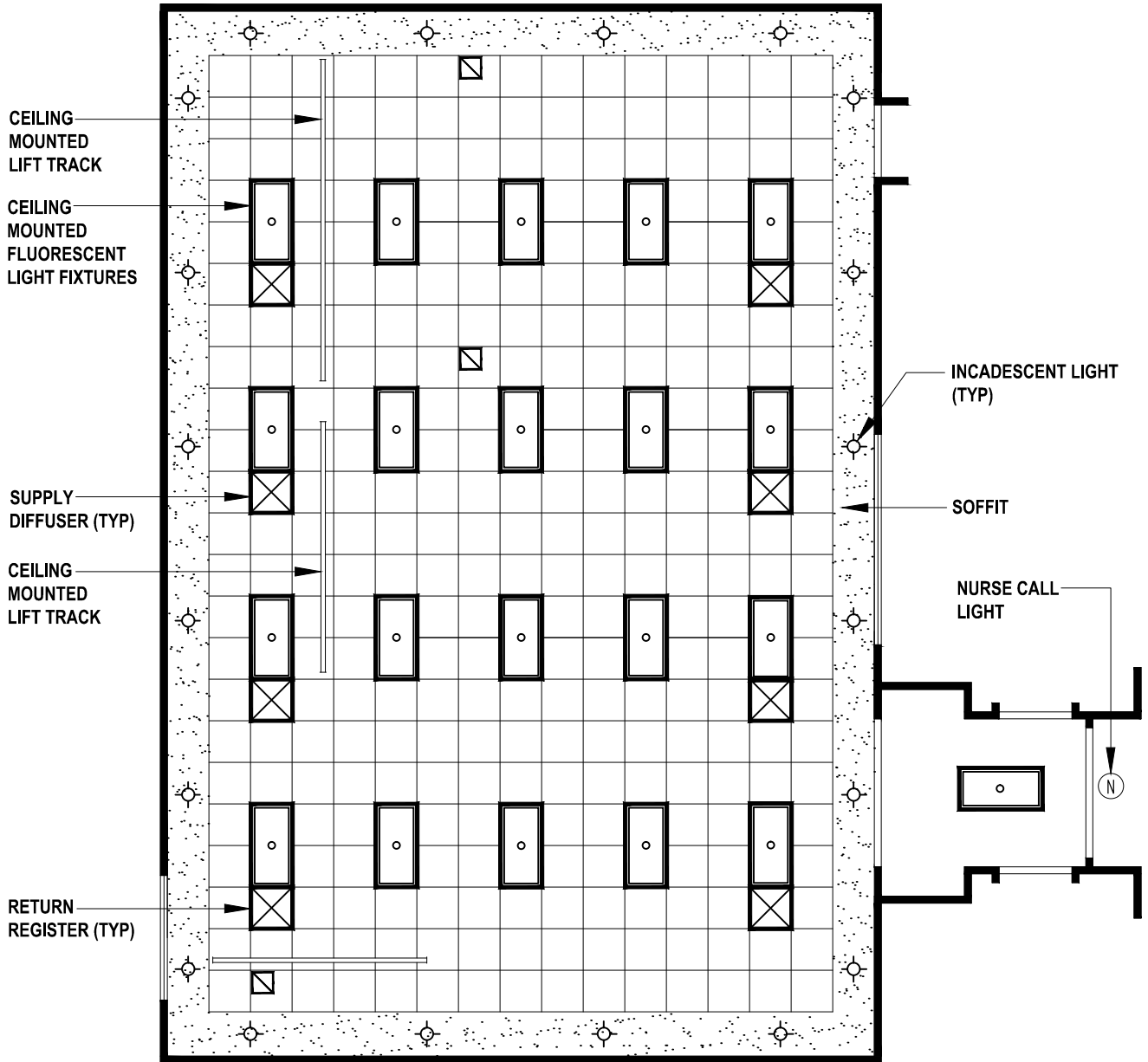


1700 NSF (157.9 NSM)

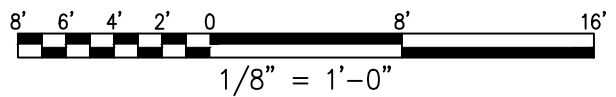


7 - L. PT / KT / OT Clinic (PTES1)

Reflected Ceiling Plan



1700 NSF (157.9 NSM)



7 - L. PT/KT/OT Clinic (PTES1)

Space Requirement:

1700 NSF (157.9 NSM)

Architectural:

| | |
|-----------------------|---|
| Floor Finish: | Vinyl Composition Tile |
| Base: | Vinyl |
| Wall Finish: | Gypsum Wallboard/Paint |
| Ceiling: | Acoustical Tile |
| Ceiling Height: | 9'-6" (2895 mm) |
| Noise (STC Rating): | 30 |
| Slab Depression: | None |
| Special Construction: | Wall-mounted pulleys require a reinforced wall with hardwood, Veneer plywood surface; see Master specifications #06200. |
| Hardware: | 82 |
| Doors: | 2 @ 3'-0" (914 mm) x 7'-0" (2133 mm) wood or metal, upper half=laminated safety glass. |
| Windows: | Desirable, see PG-18-3, Topic 1, Codes and Standards |

HVAC:

| | |
|------------------------|--------------------|
| Temperature/Humidity: | |
| Summer: | 72°F (22°C) @60%RH |
| Winter: | 82°F (28°C) @20%RH |
| Min. Air Changes/Hour: | 6 ACH |
| Pressure: | Neutral (0) |
| Max Noise Criteria: | 40 |

Electrical:

| | |
|-------------------|------|
| Lighting Levels: | |
| Gen. Illum: | 30fc |
| Emergency Power: | |
| One Ceiling Light | |
| Nurse Call | |

7 - L. PT/KT/OT Clinic (PTES1)

Equipment Table:

| A SYMBOL | QUANTITY | | | | AI | DESCRIPTION |
|-------------|----------|---|---|---|----|---|
| | A | B | C | D | | |
| | 2 | 4 | | | VV | PLATFORM, MAT, 72"W X 96"L X 18"H OR 48"W X 84"L X 18"H |
| | 1 | 1 | | | VV | GYM, UNIVERSAL, APPROX. 84" X 84" X 84" NOTE: THE MEDICAL CENTER MAY SUBSTITUTE A PLATFORM MAT FOR THE UNIVERSAL GYM. THIS ELIMINATES THE NEED FOR A SEPARATE LATISSIMUS BAR AND CEILING MOUNTED PULLEY. |
| | 1 | 2 | | | VV | TABLE, TREATMENT, HI-LO ELECTRICAL 120 VOLT, 20 AMP, 30"W X 78"L X 32"H |
| | 2 | 2 | | | VV | FRAMES, STANDING, 32"W X 42"L X 60"H |
| | 1 | 1 | | | VV | BARS, PARALLEL, APPROX. 26"W X 180"L X 40"H |
| | | 1 | | | VV | BARS, PARALLEL, APPROX. 26"W X 144"L X 40"H |
| | 1 | 1 | | | VV | TABLE, TILT, ELECTRICAL, 120 VOLT, 20 AMP, 28"W X 76"L X 32"H |
| | 1 | 2 | | | VV | PULLEY, OVERHEAD, CEILING MOUNTED |
| | 2 | 4 | | | VV | PULLEY, WALL, TRIPLEX APPROX. 38"W X 12"D X 96"H |
| | 1 | 1 | | | VV | RICKSHAW, APPROX. 42"W X 62"L X 30"H |
| | 1 | 2 | | | VV | EXERCYCLE, ELECTRIC, 120 VOLT, 20 AMP, APPROX. 24"W X 48"L X 40"H |
| | 1 | 1 | | | VV | BAR, LATISSIMUS, APPROX. 32"W X 50"L X 96"H |
| | 1 | 2 | | | VV | CART, WEIGHT, APPROX. 26"W X 36"L X 54"H |
| | 1 | 2 | | | VV | WAGON, DUMBELLS, APPROX. 25"W X 46"L X 41"H |
| | 2 | 4 | | | VV | MIRROR, SINGLE, PORTABLE, FULL LENGTH, APPROX. 24"W X 4"D X 72"H |
| | | 1 | | | VV | MIRROR, POSTURE, 3-WAY, APPROX. 81"W X 12"D X 72"H |
| | 1 | 1 | | | VV | BATH, PARAFFIN, ARM, HAND AND FOOT, APPROX. 12"W X 25"L X 36" H |
| | 1 | 1 | | | VV | STAIRS, EXERCISE, APPROX. 39"W X 54"L X 59"H |
| | 2 | 6 | | | VV | WHEELCHAIRS, TEACHING, APPROX. 26"W X 57"L X 36"H |

**TABLE 4.7-L
PT/KT/OT CLINIC (PTES1)**

7 - L. PT/KT/OT Clinic (PTES1)

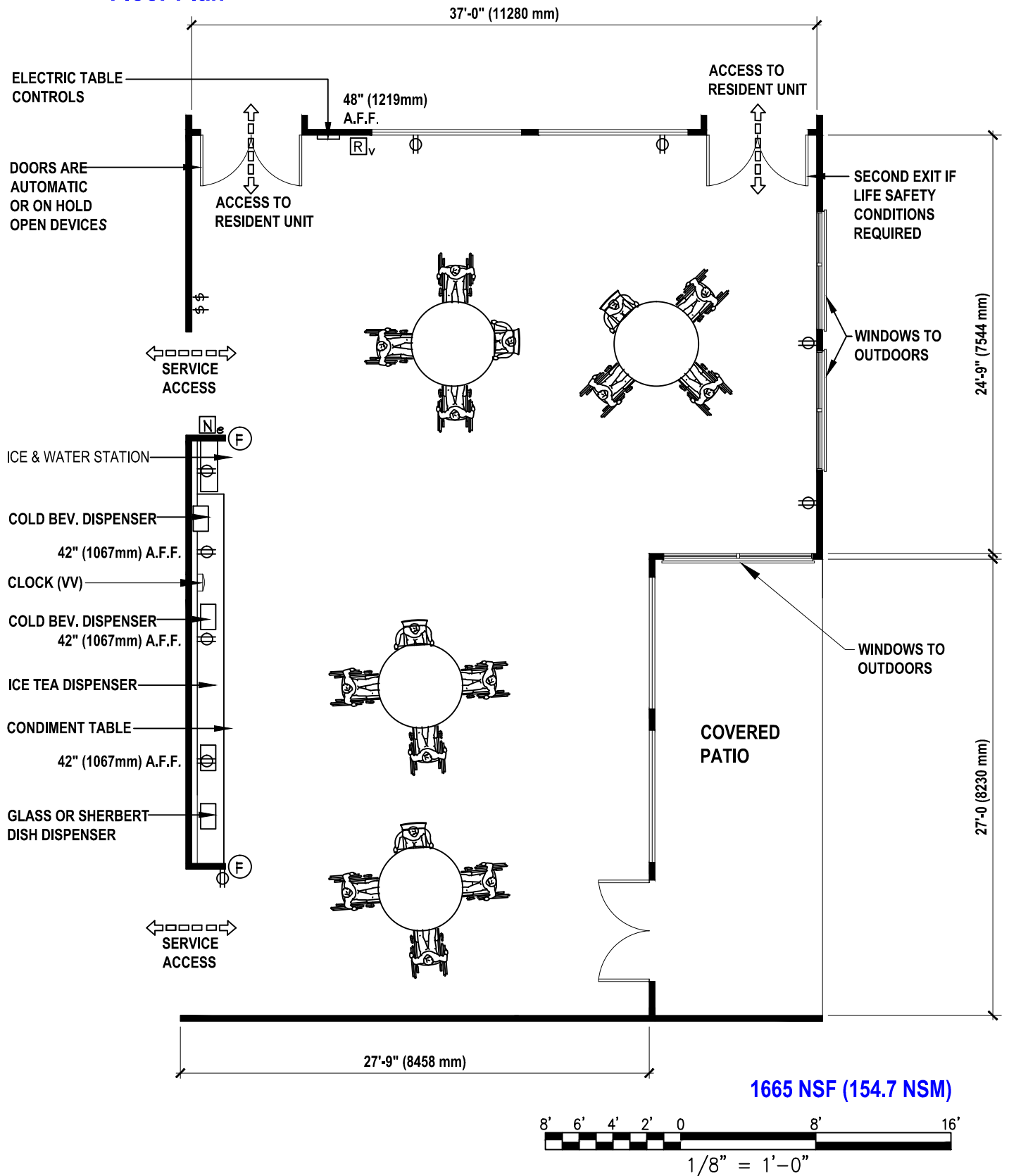
Equipment Table:

| SYMBOL | QUANTITY | | | | AI | DESCRIPTION |
|--------|----------|----|---|---|----|--|
| | A | B | C | D | | |
| | 1 | 2 | | | VV | CABINET, STORAGE, METAL, 2 DOORS WITH LOCK, 48"W X 18"D X 78"H |
| | 1 | 1 | | | VV | ERGOMETER, UPPER EXTREMITIES, APPROX. 29"W X 52"L X 52"H |
| | AR | AR | | | VV | SPHYGMONANOMETER, WALL HUNG |
| | 1 | 1 | | | VV | LIFT, HYDRAULIC, APPROX. 22"W X 36"L X 60"H |
| | 2 | 2 | | | VV | MACHINE, INFRA-RED, APPROX. 15" W X 30"L X 66"H |
| | 1 | 1 | | | VV | MACHINE MEDCOSONALATOR, APPROX. 16"W X 24"L X 33"H |
| | 1 | 1 | | | VV | COLD-PAK, HYDROCOLLATOR, 15 ½"W X 17 ½"L (INCLUDING HANDLES) X 31"H |
| | 1 | 1 | | | VV | HOT, 12-PACK, HYDROCOLLATOR, APPROX. 16"W X 48"L X 31"H |
| P-414 | 1 | 1 | | | CC | LAVATORY, STRAIGHT, BACK, WRIST CONTROL, GOOSENECK SPOUT, 20" X 18" AND 3 1/2" APRON (PG-18-1, MCS 15450) |
| | 1 | 1 | | | VV | DISPENSER, SOAP, LIQUID, WALL MOUNTED |
| | 1 | 1 | | | VV | DISPENSER, BIFOLD PAPER TOWEL, SURFACE MOUNTED |
| | 1 | 1 | | | VV | RECEPTACLE, WASTE, STEP ON TYPE, APPROX. 12" DIAMETER |
| | 1 | 1 | | | VV | CLOCK, BATTERY OPERATED |
| P-604 | 1 | 1 | | | CC | DISPENSER, DRINKING WATER, WHEELCHAIR, MECHANICALLY COOLED, WALL HUNG, SELF-CONTAINED, APPROXIMATELY 18"W X 18"D X 25"H (SEE ARCHITECTURE DRAWING FOR EXACT LOCATION) (PG-18-1, MCS 15450) |
| | AR | AR | | | CC | RECEPTACLE, ELECTRICAL, DUPLEX, 120 VOLT, 20 AMP (PG-18-1, MCS 16140) |
| | AR | AR | | | CC | LIGHT, FLUORESCENT, GENERAL LIGHTING (PG-18-1, MCS 16510) |
| | AR | AR | | | CC | FIRE ALARM STATION, AUDIO & VISUAL DEVICE WALL MOUNTED (PG-18-1, MCS 16721) |
| | AR | AR | | | CC | CALL NURSES EMERGENCY STATION WITH CORRIDOR SIGNAL LIGHT CONNECTED TO NEAREST NURSE CONTROL STATION (PG-18-1, MCS 16761) |
| | AR | AR | | | CC | CEILING AND LIFT TRACK |
| | 1 | 1 | | | CC | FLAMMABLE MATERIALS CABINET |
| | 1 | 1 | | | VV | WOOD WORKING BENCH |
| | 1 | 1 | | | CC | BASE CABINET WITH ACCESSIBLE SINK AND WALL CABINETS |
| | 1 | 1 | | | VV | TOOL CABINET |
| | 1 | 1 | | | VV | ADJUSTABLE WORK TABLE |

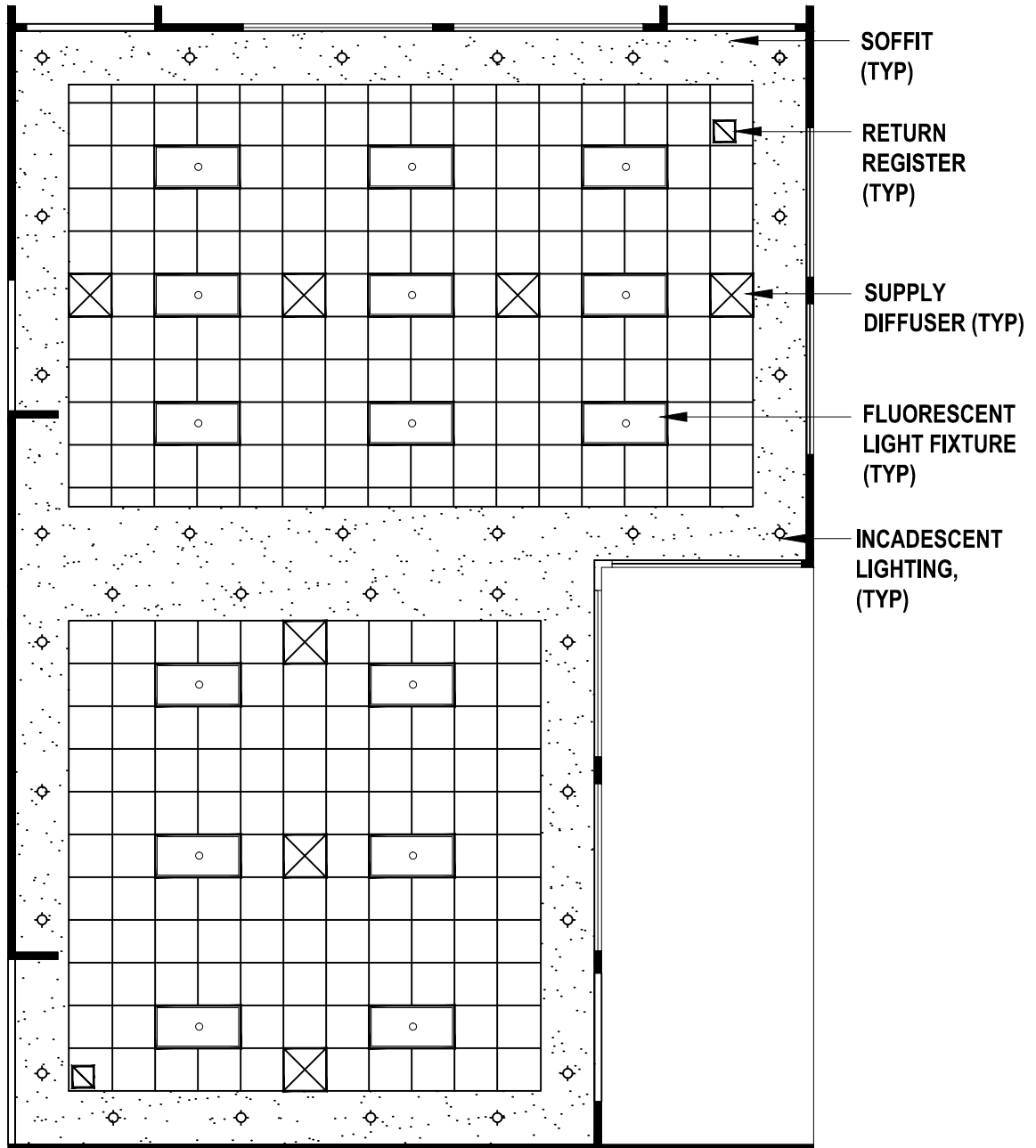
**TABLE 4.7-L (CONT'D)
PT/KT/OT CLINIC (PTES1)**

Page Left Blank Intentionally

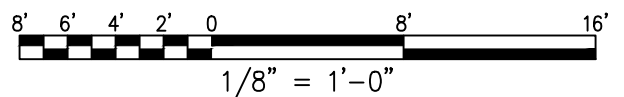
**8 - L. (On Unit) Resident Dining/Serving (FSCD1)
Floor Plan**



8 - L. (On Unit) Resident Dining/Serving (FSCD1) Reflected Ceiling Plan



1665 NSF (154.7 NSM)



8 - L. (On-Unit) Resident Dining/Serving (FSCD1)

Space Requirement:

1665 NSF (154.7 NSM)

Architectural:

Floor Finish: Vinyl Composition Tile
Base: Vinyl
Wall Finish: GWB/Vinyl Fabric Walkover
Ceiling: Acoustical Tile
Ceiling Height: 9'-0" (2743 mm)
Noise (STC Rating): 35
Slab Depression: None
Special Construction: -
Hardware: 82
Doors: 2 @ 3'-0" (914 mm) x 7'-0" (2134 mm) wood or metal, upper half=laminated safety glass.
Windows: Very desirable, see PG-18-3, Topic 1, Codes and Standards.

HVAC:

Temperature/Humidity:
Summer: 72°F (22°C) @60%RH
Winter: 82°F (28°C) @20%RH
Min. Air Changes/Hour: 6 ACH
Pressure: Negative (-)
Max Noise Criteria: 40

Electrical:

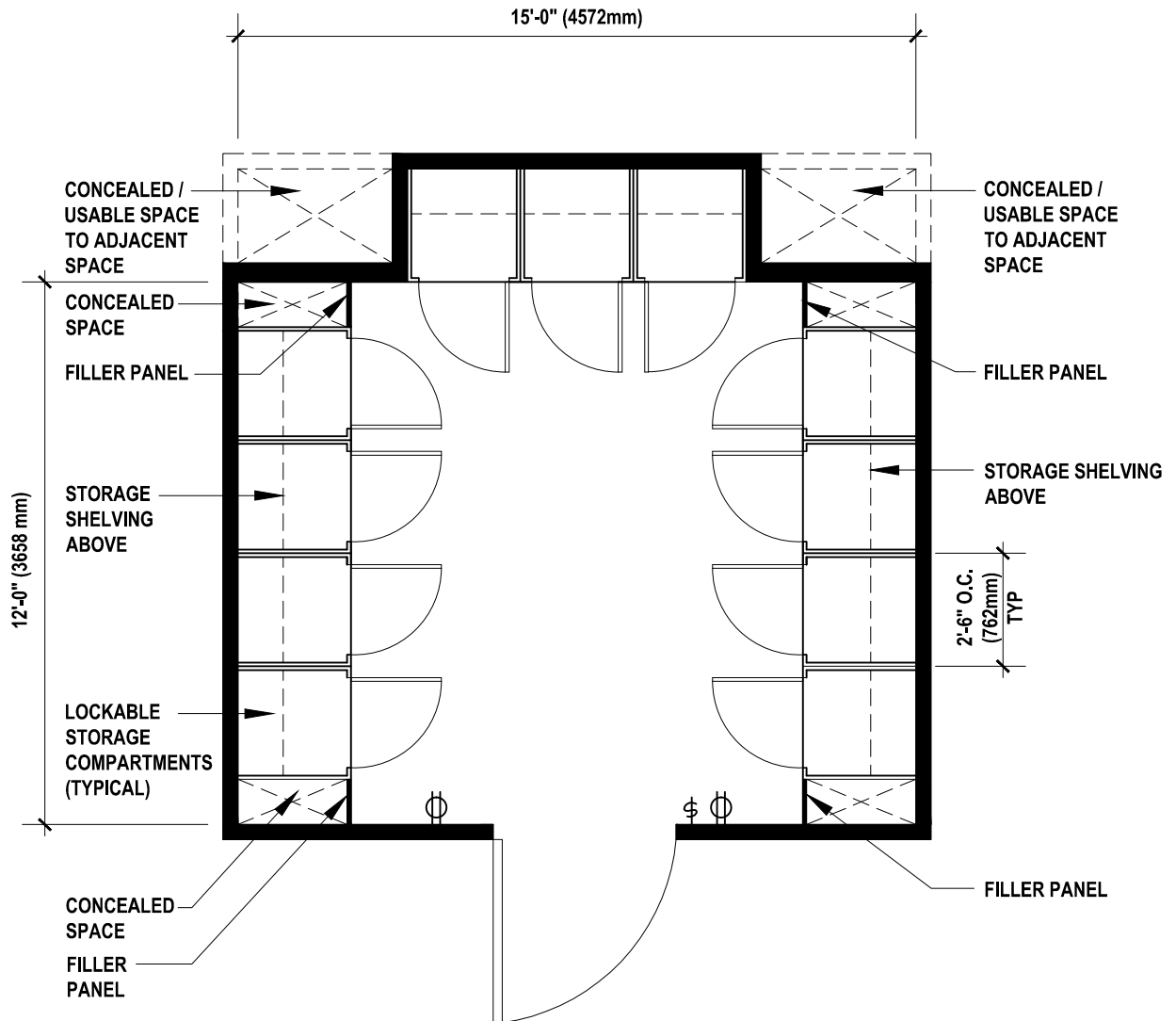
Lighting Levels:
Three Level Illuminations:
High: 30fc
Med: 20fc
Low: 10fc
Emergency Power:
Two Ceiling Lights
Night Lights

8 - L. (On-Unit) Resident Dining/Serving (FSCD1)**Equipment Table:**

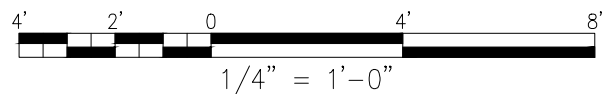
| SYMBOL | QUANTITY | | | | AI | DESCRIPTION |
|--------|----------|----|---|---|----|---|
| | A | B | C | D | | |
| | | AR | | | VV | CHAIR, DINING, APPROX. 18"W X 18"D |
| | | AR | | | VV | TABLE, REGULAR DINING, 60" DIAMETER, WITH FIXED LEGS |
| | | 1 | | | VV | CLOCK, BATTERY OPERATED |
| | | 1 | | | CC | SPEAKER, WITH CHANNEL SELECTOR AND VOLUME CONTROL, HOSPITAL RADIO SYSTEM (PG-18-1, MCS 16771) |
| | | 1 | | | CC | ICE AND WATER STATION WITH AUTOMATIC ICE MAKER AND DISPENSER, FLOOR MOUNTED, 227 KG (500 LB.), PER DAY, 45 KG (100 LB.), BIN, 914 mm X 711 mm X 2134 mm (36" X 28" X 84") |
| | | 1 | | | CC | DISPENSER, PAPER CUP, RECESSED TYPE, TWIN STACK, 177 ML (6 OUNCE) CUPS, WITH DISPOSAL COMBINATION UNITS, LOCATE ADJACENT TO WATER STATION |
| | | 1 | | | CC | DISPENSER, GLASS OR SHERBERT DISH, MOBILE, 787 mm X 584 mm X 914 mm (31" X 23" X 36") |
| | | 1 | | | CC | DISPENSER, BEVERAGE COLD |
| | | 1 | | | CC | DISPENSER, ICE TEA, PORTABLE (TO BE PLACED ON K-9110) |
| | | AR | | | CC | CALL, NURSES- EMERGENCY STATION WITH CORRIDOR SIGNAL LIGHT CONNECTED TO NEAREST NURSE CONTROL STATION (PG-18-1, MCS 16761) |
| | | AR | | | CC | RECEPTACLE, ELECTRICAL, DUPLEX, 120 VOLT, 20 AMP (PG-18-1, MCS 16140) |
| | | AR | | | CC | LIGHT, FLUORESCENT, GENERAL LIGHTING (PG-18-1, MCS 16510) |

**TABLE 4.8-L
(ON-UNIT) RESIDENT DINING/SERVING (FSCD1)**

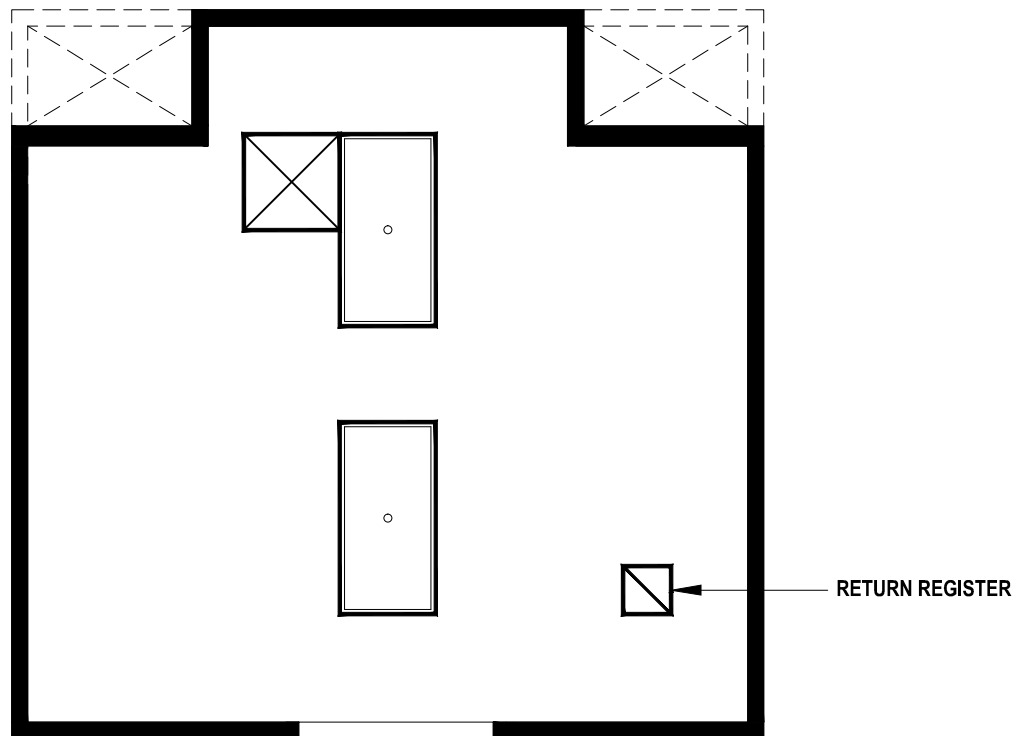
9 - L. Resident Storage-Resident Belongings (SRPB1) Floor Plan



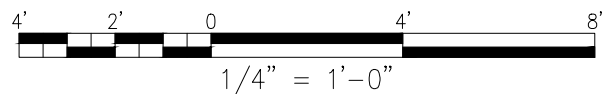
180 NSF (16.7 NSM)



9 - L. Resident Storage-Resident Belongings (SRPB1)
Reflected Ceiling Plan



180 NSF (16.7 NSM)



9 - L. Resident Storage - Resident Belongings (SRPB1)

Space Requirement:

180 NSF (16.8 NSM)

Architectural:

| | |
|-----------------------|---|
| Floor Finish: | Vinyl Composition Tile |
| Base: | Vinyl |
| Wall Finish: | Gypsum Wallboard/Paint |
| Ceiling: | Gypsum Wallboard |
| Ceiling Height: | 8'-0" (2438 mm) |
| Noise (STC Rating): | 30 |
| Slab Depression: | None |
| Special Construction: | - |
| Hardware: | 14 |
| Doors: | 4'-0" (1219 mm) x 7'-0" (2134 mm) wood or metal, optional glass view panel. |
| Windows: | None Required |

HVAC:

| | |
|------------------------|--------------------|
| Temperature/Humidity: | |
| Summer: | 72°F (22°C) @60%RH |
| Winter: | 82°F (28°C) @20%RH |
| Min. Air Changes/Hour: | 4 ACH |
| Pressure: | Negative (-) |
| Max Noise Criteria: | 40 |

NOTES:

1. Room temperature control is optional.

Electrical:

| | |
|------------------|------|
| Lighting Levels: | |
| Gen. Illum: | 20fc |
| Emergency Power: | - |

9 - L. Resident Storage - Resident Belongings (SRPB1)

Equipment Table:

| SYMBOL | QUANTITY | | | | AI | DESCRIPTION |
|--------|----------|----|---|---|----|--|
| | A | B | C | D | | |
| | | AR | | | CC | RECEPTACLE, ELECTRICAL, DUPLEX, 120 VOLT, 20 AMP |
| | | AR | | | CC | BASE CABINETS WITH DOORS, ALONG ALL THREE WALLS |
| | | AR | | | CC | WALL CABINETS/STORAGE SHELVING, WALL MOUNTED ABOVE BASE CABINETS |
| | | AR | | | CC | LIGHT, FLOURESCENT, GENERAL LIGHTING, PG – 18 – 1, MSC 16510 |

**TABLE 4.9-L
RESIDENT STORAGE - RESIDENT BELONGINGS (SRPB1)**