



Mailer Scorecard User Guide

For External Users

Version 1.0
January 13, 2013

Section 1 Mailer Scorecard

1.1 Mailer Scorecard Reporting

1.1.1 Mailer Scorecard

1.1.2 Mailer Scorecard – Full-Service Compliance Panel

1.1.3 Mailer Scorecard – eInduction Panel

1.1.4 Mailer Scorecard - Seamless Panel

1.1.5 Mailer Scorecard - Manual Sampling Panel

1.1.6 Mailer Scorecard - Entry Point Verification Panel

1.1.7 Drilling

1.1.7.1 Mailer Scorecard Job Details (All)

1.1.7.2 Mailer Scorecard Job Details (Full-Service Compliance)

1.1.7.3 Mailer Scorecard Job Details (eInduction)

Figure

1.1.7.4 Mailer Scorecard Job Details (Seamless)

1.1.7.5 Mailer Scorecard Job Details (Manual Sampling)

1.1.7.6 Mailer Scorecard Job Details (Entry Point Verification)

[1.1.7.7 eInduction Job Summary Report](#)

[1.1.7.8 View Error Details by Error Type](#)

[1.1.7.9 Undocumented Summary Report](#)

[1.1.7.10 Mailer Scorecard Weekly Trending](#)

[1.1.8 Exporting to PDF and Excel](#)

[1.2 Appendix](#)

[1.2.1 Mailer Scorecard Map](#)

[1.2.2 Field Map](#)

[1.2.3 Definitions and Source Map](#)

[1.2.4 Abbreviations and Terms](#)

Section 1 Mailer Scorecard

1.1 Mailer Scorecard Reporting

Mailer Scorecard Reporting consists of a dashboard and several drill reports that will allow users to view a summary of performance across several USPS programs. Currently, metrics related to Full-Service Compliance, eInduction, Seamless Acceptance, Manual Sampling and Entry Point Verification are reported.

To view data by Mailer (eDoc submitter CRID), the user will click the Mailer Scorecard folder which is the only access point for this report. The following sections will provide details on the Mailer Scorecard and any associated drill reports.

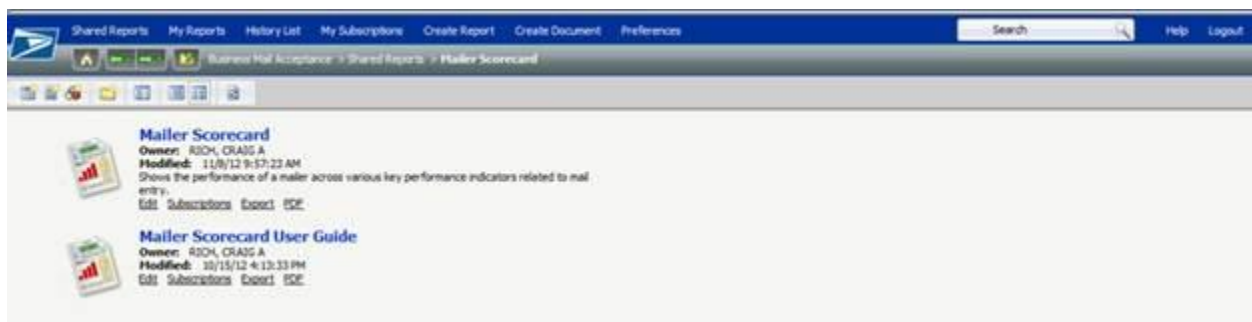


Figure 1 – Mailer Scorecard

The Mailer Scorecard Report is structured as follows:

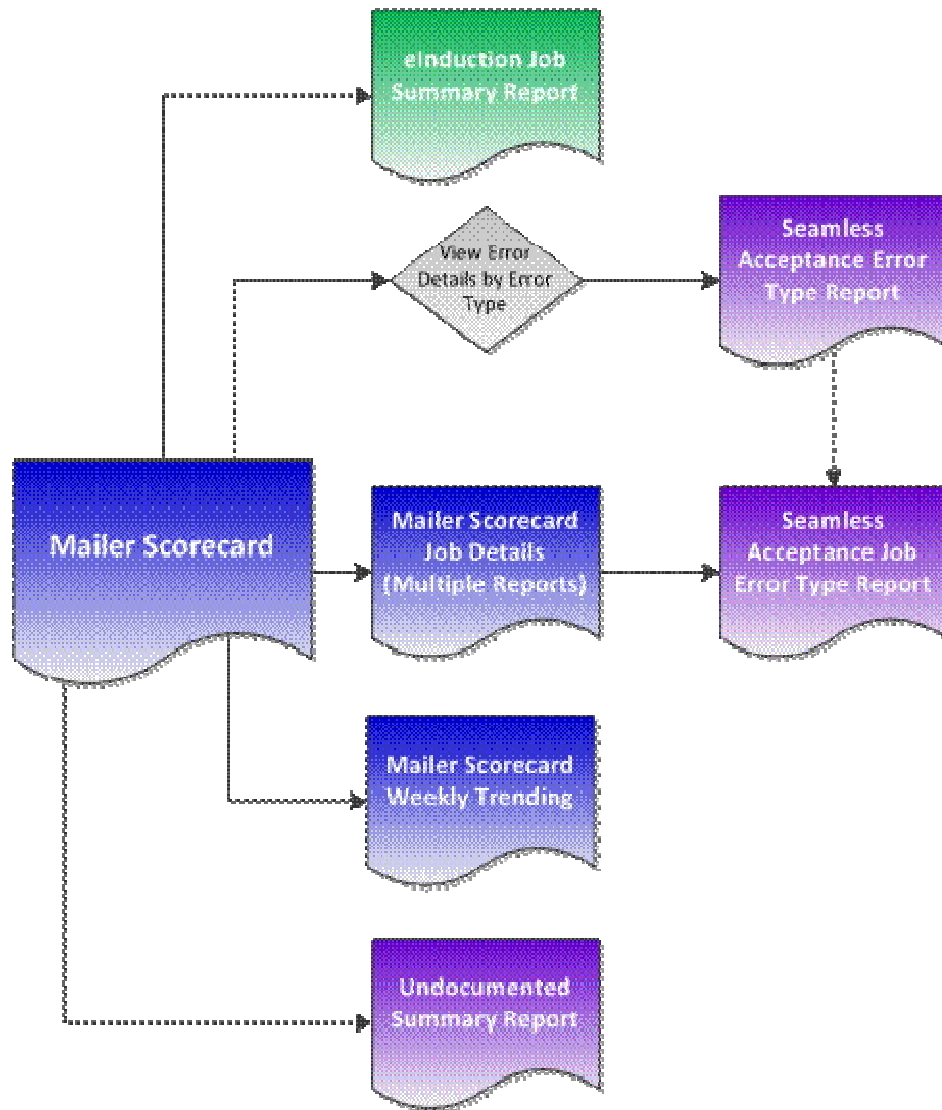


Figure 2 – Mailer Scorecard Flowchart

Report Name	Description
Mailer Scorecard	Users will access the Mailer Scorecard to review the performance of mailers across various key performance indicators related to mail entry.
eInduction Job Summary Report	Users will access the eInduction Job Summary Report to see data associated to eInduction metrics by job.
Mailer Scorecard Job Details	Users will access the Mailer Scorecard Job Details drills to review Full-Service Compliance, eInduction, Seamless Acceptance, Manual Sampling, or Entry Point Verification data by job.
Mailer Scorecard Weekly Trending	Users will access the Mailer Scorecard Weekly Trending report to see how percentage metrics that are reported on the Mailer Scorecard have been trending week-by-week.

Seamless Acceptance Error Type Report	Users will access the Seamless Acceptance Error Type Report to see the details of Full-Service, Seamless Acceptance, Manual Sampling or Entry Point Verification errors by error type.
Seamless Acceptance Job Error Type Report	Users will access the Seamless Acceptance Job Error Type Report to see the details of Full-Service, Seamless Acceptance, Manual Sampling or Entry Point Verification errors by job and error type.
Undocumented Summary Report	Users will access the Undocumented Summary Report in order to investigate the details of undocumented piece counts.

Figure 3 – Mailer Scorecard Flowchart Description

1.1.1 Mailer Scorecard

The Mailer Scorecard requires the user to select a month. Data in the report will be limited to jobs with a postage statement mailing date in the selected month. The report requires the user to select an eDoc submitter CRID. The CRID prompt includes all CRIDs associated to the user in the Business Customer Gateway.

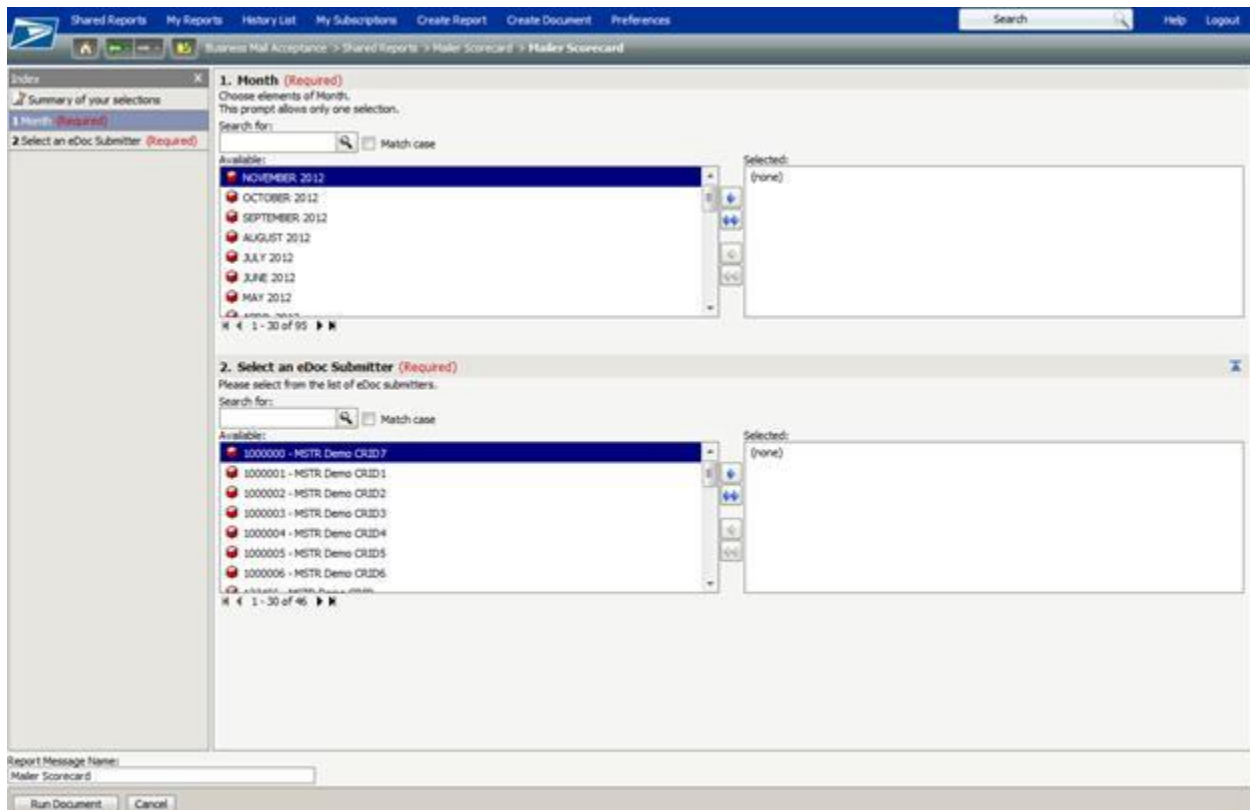


Figure 4 – Mailer Scorecard Prompt

The Mailer Scorecard contains five panels that allow the user to focus on performance in five USPS programs/perspectives: Full-Service Compliance, eInduction, Seamless Acceptance, Manual Sampling and Entry Point Verification.

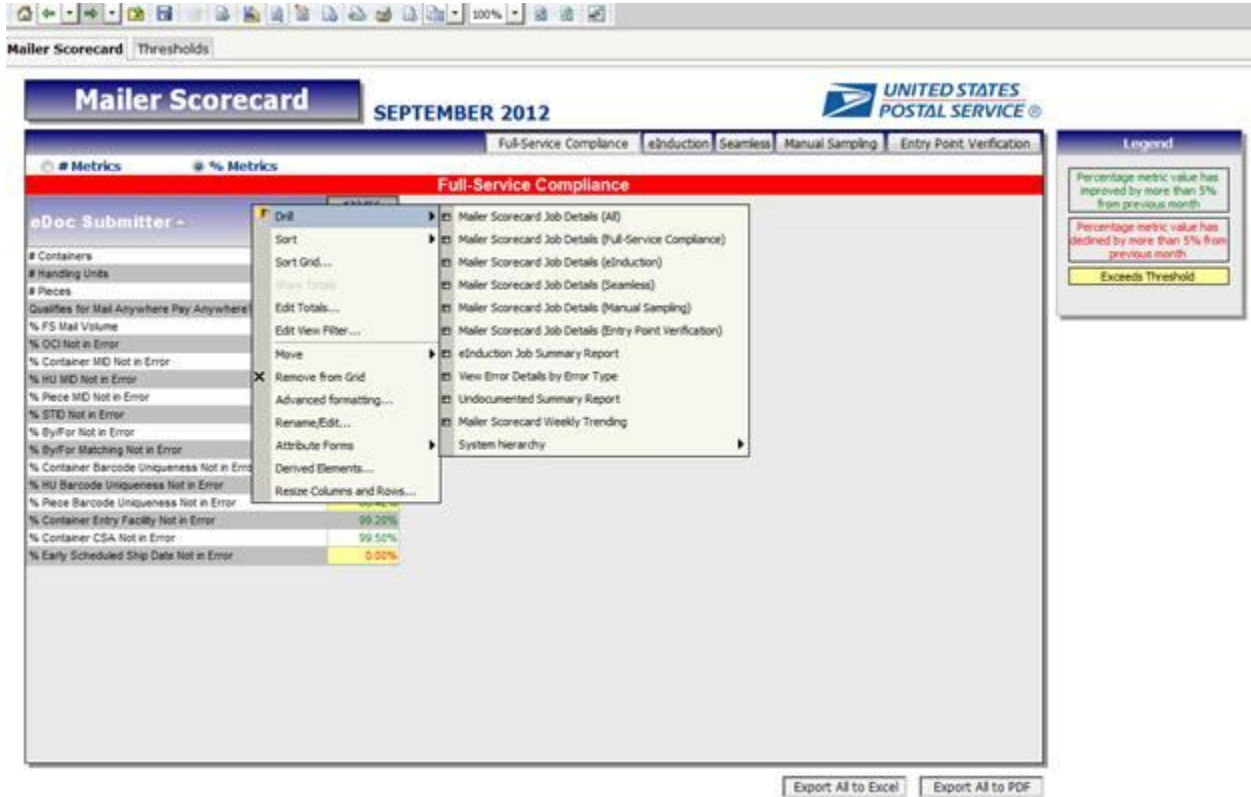


Figure 5 – Mailer Scorecard

Many metric values in the Mailer Scorecard may have conditional formatting applied to indicate trending from the previous month or that a threshold has been exceeded. A legend is provided on the report to clarify the meaning of each type of formatting:

- Percentage metric value has improved by more than 5% from previous month
- Percentage metric value has declined by more than 5% from the previous month
- Exceeds threshold (highlighted in yellow) established by USPS

These rules generally apply to percentage metrics. In the case of Full-Service Compliance numeric metrics, formatting is applied based on the value of the corresponding number metric.

Users can review thresholds for identified performance metrics when clicking on the panel adjacent to the Mailer Scorecard.

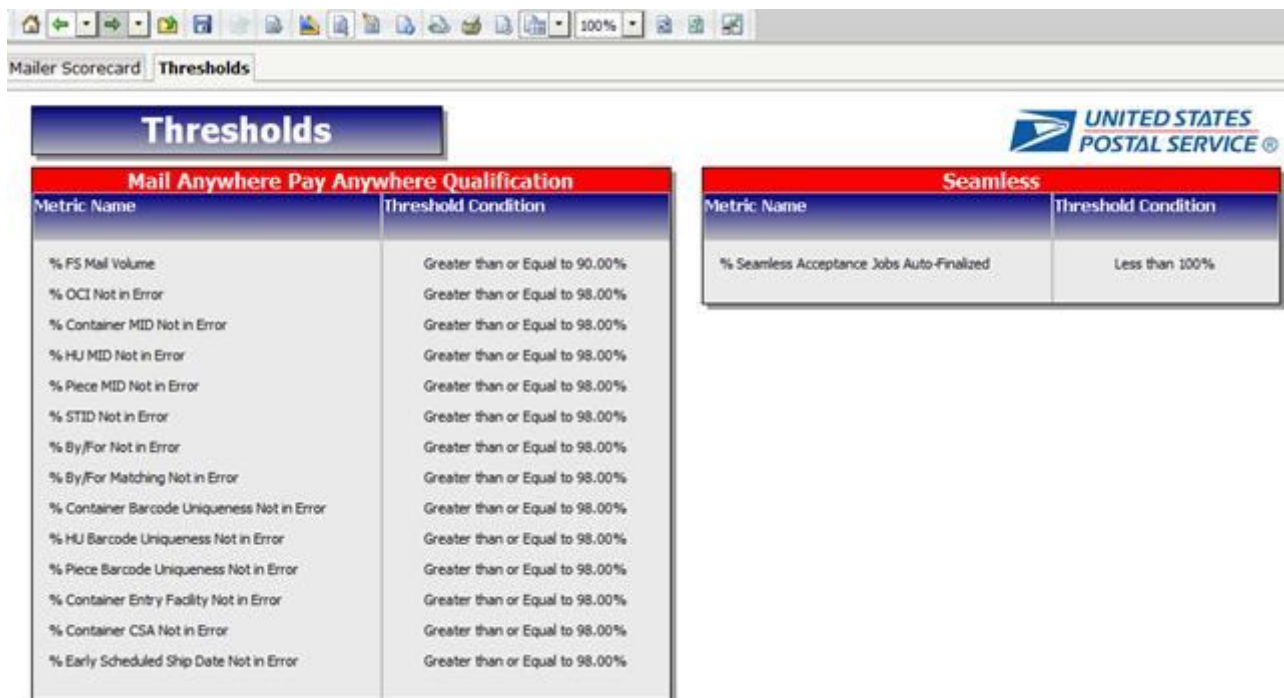


Figure 6 – Threshholds Panel

1.1.2 Mailer Scorecard – Full-Service Compliance Panel

Users will access the Full-Service Compliance panel to evaluate a mailer's participation in the Seamless Acceptance program based upon established acceptance criteria. To see both the Percentage and Number metrics, users can toggle between the Percentage of Metrics and Number of Metrics radio buttons located on the Full-Service Compliance metrics panel. Data associated to Full-Service Compliance metrics is displayed in accordance with the Legend that describes each type of conditional formatting. Additionally, the conditional formatting applies to both the number and percentage performance metrics. A Mailer will qualify for the Mail Anywhere Pay Anywhere program if their full service volume is greater than or equal to 90% or they have less than or equal to 2% of any given error.

The respective sections of this report, Percentage Metrics and Number Metrics, will display the following data for the selected eDoc Submitter:

Percentage of Metrics	Number of Metrics
Number of Containers	
Number of Handling Units	
Number of Pieces	
Qualifies for Mail Anywhere Pay Anywhere?	
Percentage of Full Service Mail Volume	Number of Full Service Pieces
Percentage of OCI Not in Error	Number of OCI Errors

Percentage of Container MID Not in Error	Number of Container MID Errors
Percentage of Handling Unit MID Not in Error	Number of Handling Unit MID Errors
Percentage of Piece MID Not in Error	Number of Piece MID Errors
Percentage of STID Not in Error	Number of STID Errors
Percentage of By/For Not in Error	Number of By/For Errors
Percentage of By/For Matching Not in Error	Number of By/For Matching Errors
Percentage of Container Barcode Uniqueness Not in Error	Number of Container Barcode Uniqueness Errors
Percentage of Handling Unit Barcode Uniqueness Not in Error	Number of Handling Unit Barcode Uniqueness Errors
Percentage of Piece Barcode Uniqueness Not in Error	Number of Piece Barcode Uniqueness Errors
Percentage of Container Entry Facility Not in Error	Number of Container Entry Facility Errors
Percentage of Container CSA Not in Error	Number of Container CSA Errors
Percentage of Early Scheduled Ship Date Not in Error	Number of Early Scheduled Ship Date Errors
	Number of DMU Verified USPS Transported Containers

Figure 7 – Full – Service Compliance Metrics

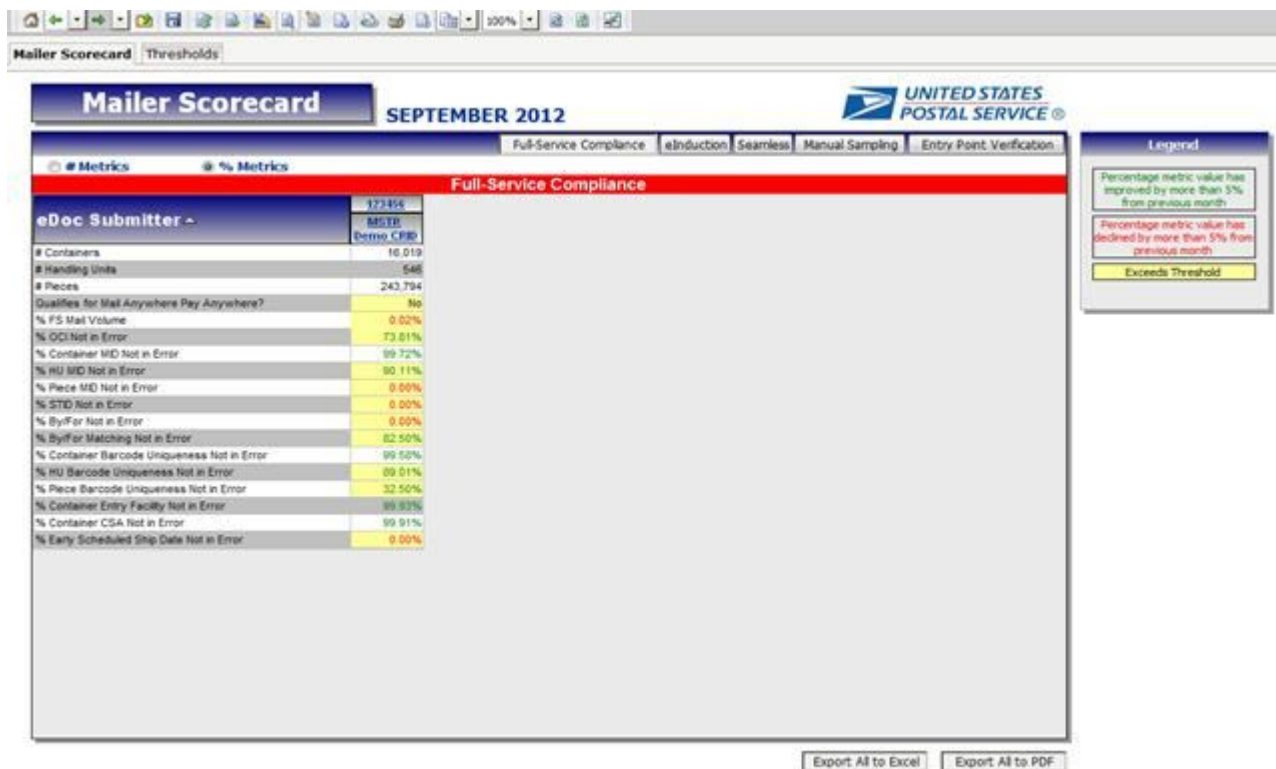


Figure 8 – Full–Service Compliance % Metrics

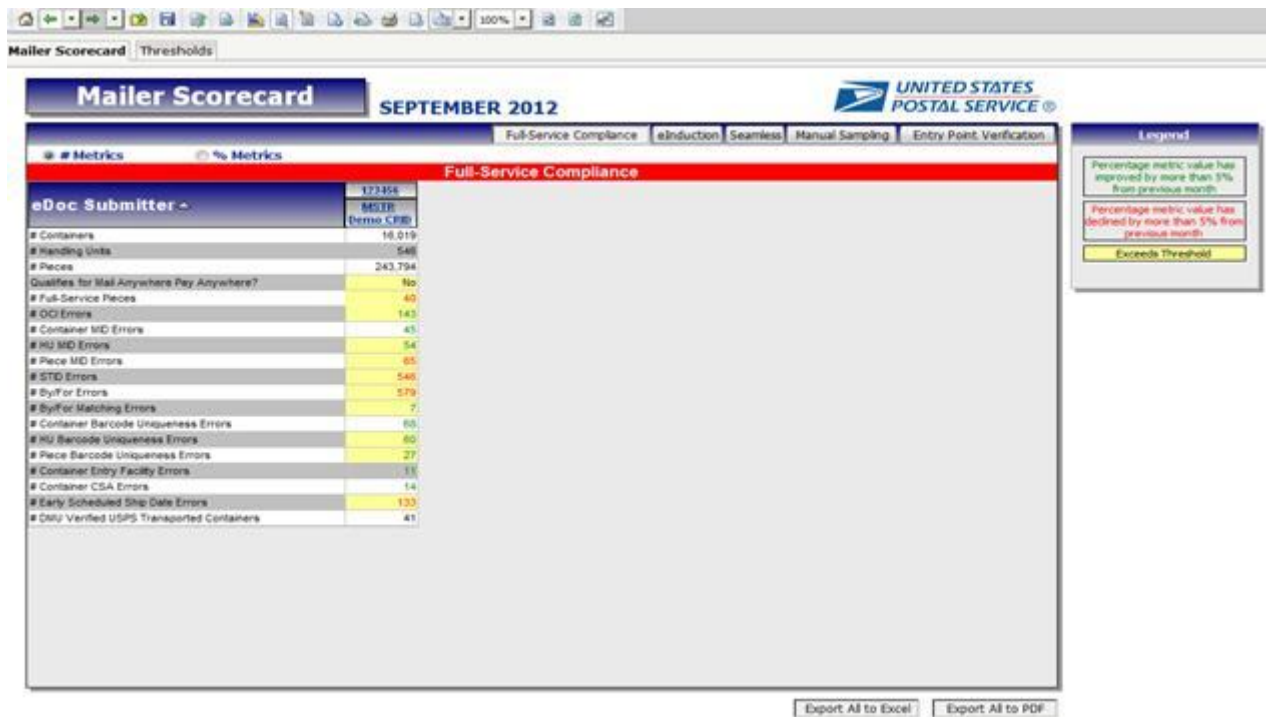


Figure 9 - Full-Service Compliance # Metrics

1.1.3 Mailer Scorecard – eInduction Panel

eInduction requires all mailers to submit electronic documentation (eDoc) through *PostalOne!* to provide information on mail preparation and postage payment. A user would access the eInduction panel located in the upper right-hand corner of the dashboard so that they can evaluate a Mailer's eInduction performance. Data associated to eInduction metrics is displayed in accordance with the Legend that describes each type of conditional formatting.

This section of the report will display the following data for the selected eDoc Submitter:

- Number of Containers
- Percentage of Container eInduction
- Number of PVDS Containers
- Number of Mailer Transported eInduction Containers
- Number of USPS Transported eInduction Containers
- Percentage of eInduction Containers Continuous
- Percentage of eInduction Containers SV
- Percentage of eInduction Containers without Entry Point eDoc Errors
- Percentage of eInduction Containers without Barcode eDoc Errors
- Percentage of eInduction Containers without Manual Overrides
- Percentage of eInduction Containers Released
- Percentage of eInduction Containers not Misshipped
- Percentage of SV eInduction Container Scanned and Accepted without Error

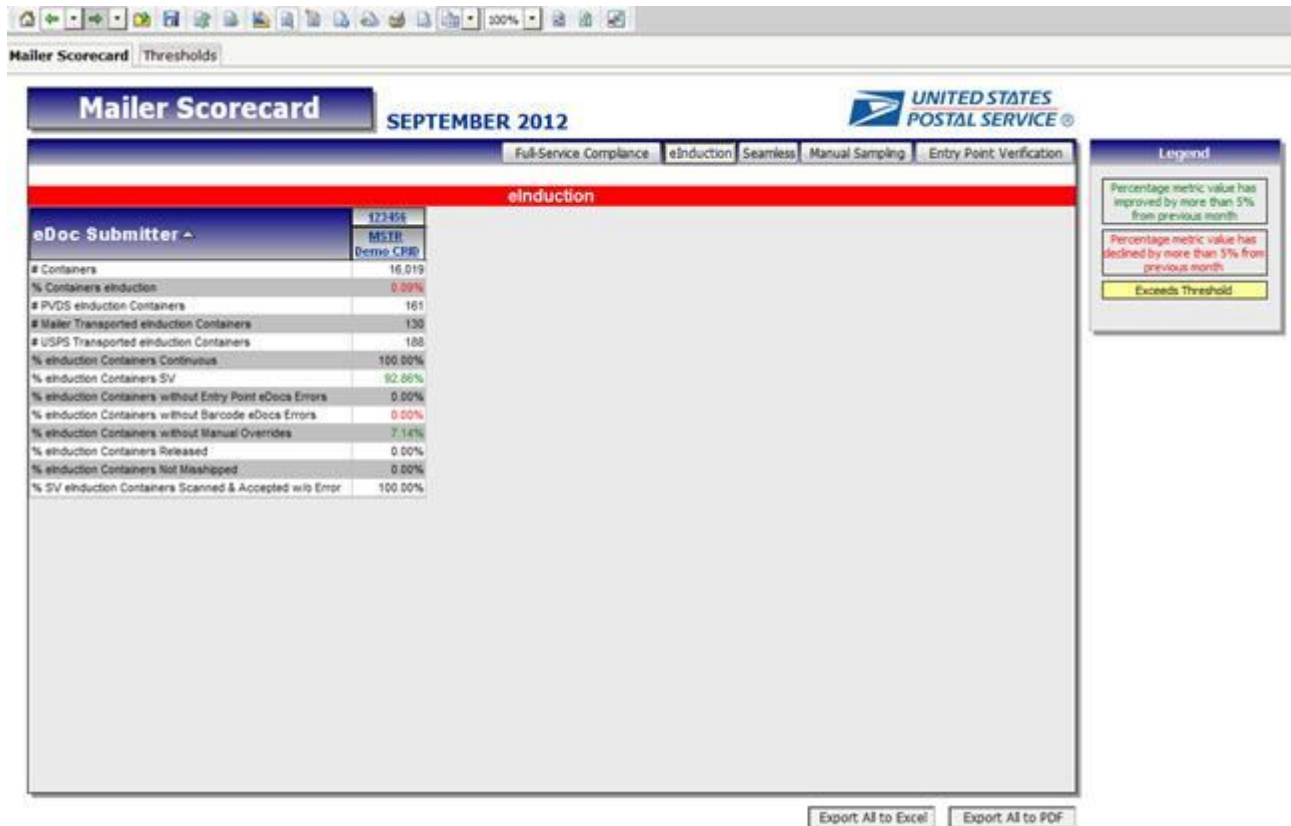


Figure 10 – eInduction Metrics

1.1.4 Mailer Scorecard - Seamless Panel

The Seamless Acceptance program requires that a mailing must be flagged for eInduction to qualify. The *PostalOne!* system performs eInduction specific validations on the mailing to ensure that all fields within the files and messages are populated correctly. A user would access the Seamless Acceptance panel so that they can evaluate a Mailer's performance in the Seamless Acceptance program. Data associated to Seamless metrics is displayed in accordance with the Legend that describes each type of conditional formatting.

This section of the report will display the following data for the selected eDoc Submitter:

- CRID Seamless Status
- Number of Seamless Acceptance Jobs
- Number of Bypass Seamless Acceptance Jobs
- Number of Seamless Acceptance Containers
- Number of Seamless Acceptance Handling Units
- Number of Seamless Acceptance Pieces
- Percentage of Volume Seamless Acceptance
- Percentage of Seamless Acceptance Jobs Auto-Finalized
- Piece Scan Rate
- Adjusted Piece Scan Rate
- Percentage of Presort Not in Error (MPE)
- Percentage of Presort Not in Error (Manual Sampling)
- Percentage of Entry Facility Not in Error
- Percentage of Change of Address Not in Error

- Percentage of DPV Not in Error
- Percentage of Documented Pieces

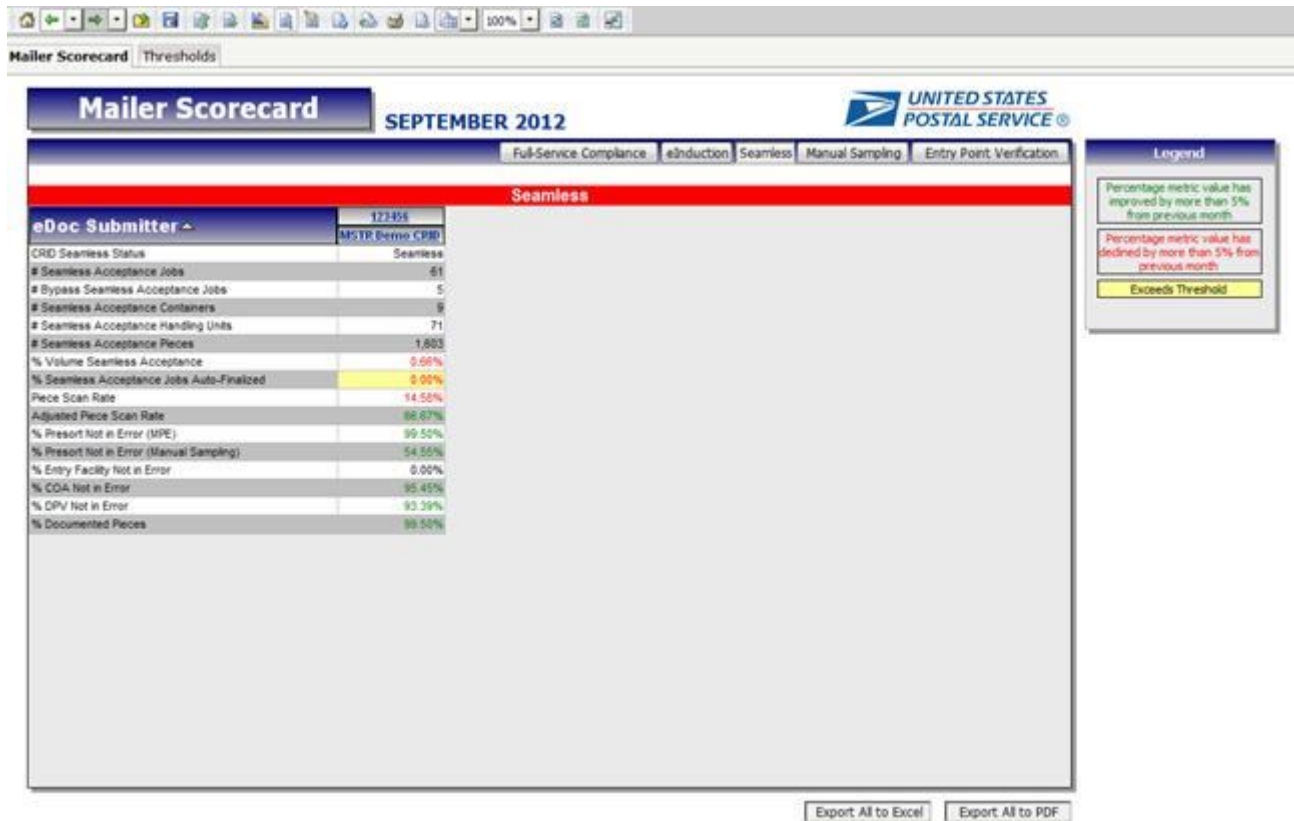


Figure 11 – Seamless Metrics

1.1.5 Mailer Scorecard - Manual Sampling Panel

Manual Sampling is performed by USPS through use of a hand held scanning device, FS-IMD (Full-Service Intelligent Mail Device), and is used to collect data samples from the physical assets of the mailing to provide feedback regarding the quality and content. A user would access the Manual Sampling panel so that they can evaluate a Mailer's performance on mail that was manually sampled. Data associated to the Manual Sampling metrics is displayed in accordance with the Legend that describes each type of conditional formatting.

This section of the report will display the following data for the selected eDoc Submitter:

- Number of Containers Sampled
- Number of Handling Units Sampled
- Number of Pieces Sampled
- Percentage of Container Mail Characteristic Not in Error
- Percentage of Handling Unit Mail Characteristic Not in Error
- Percentage of Piece Mail Characteristic Not in Error

- Percentage of Container Nesting/Sortation Not in Error
- Percentage of Handling Unit Nesting/Sortation Not in Error
- Percentage of Piece Nesting/Sortation Not in Error
- Percentage of Container Barcode Quality Not in Error
- Percentage of Handling Unit Barcode Quality Not in Error
- Percentage of Piece Barcode Quality Not in Error
- Percentage of Piece Weight Not in Error
- Percentage of Piece Postage Not in Error

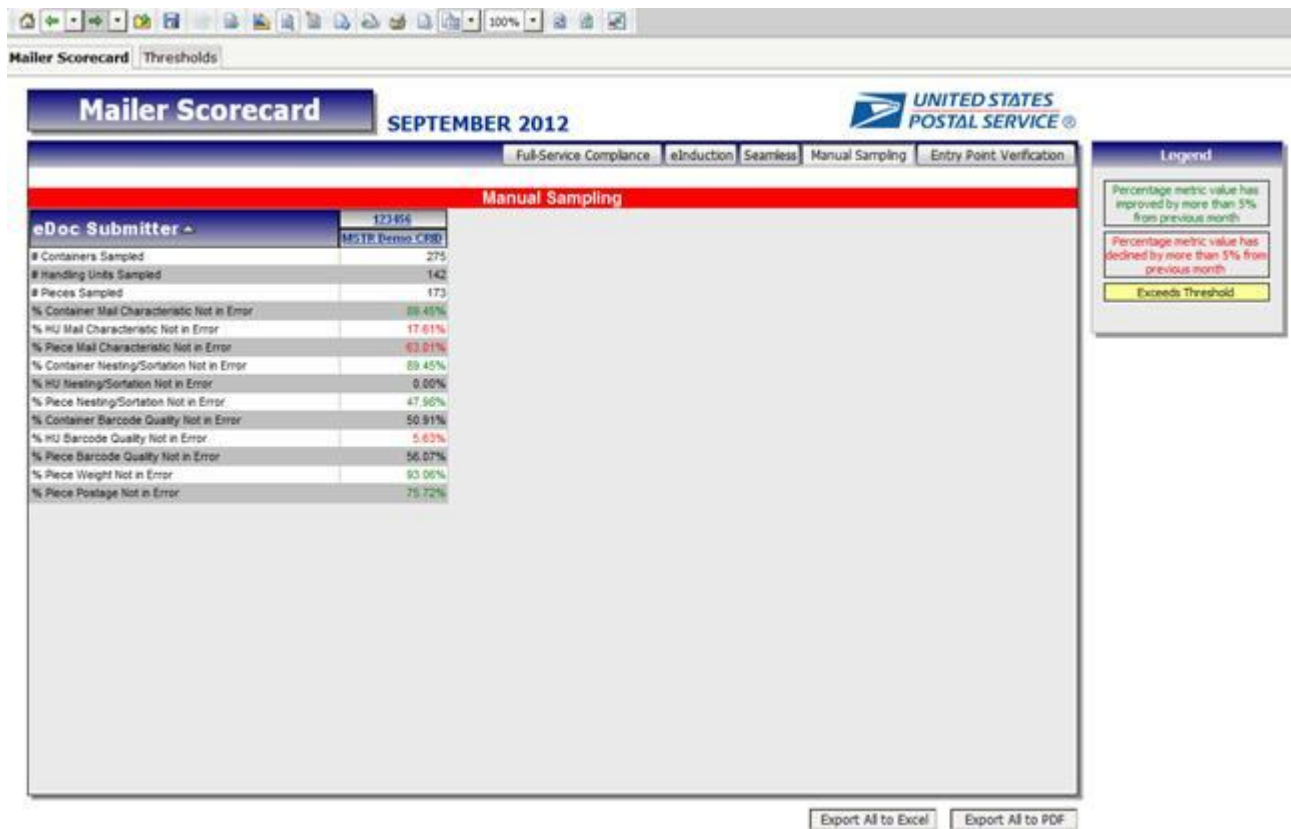


Figure 12 – Manual Sampling Metrics

1.1.6 Mailer Scorecard - Entry Point Verification Panel

Entry Point Verifications are performed by USPS on containers and orphan handling units. A user would access Entry Point Verification panel so that they can evaluate a Mailer's performance pertaining to errors received during entry point verification. Data associated to the Entry Point Verification metrics is displayed in accordance with the Legend that describes each type of conditional formatting.

This section of the report will display the following data for the selected eDoc Submitter:

- Number of Full-Service Containers

- Number of Full-Service Orphan Handling Units
- Percentage of Matching eDoc and Appointment Entry Points
- Percentage of Valid eDoc Locale Key
- Percentage of Valid eDoc Postal Code
- Percentage of Valid MDF Match
- Percentage of MDF Match in Valid Date Range

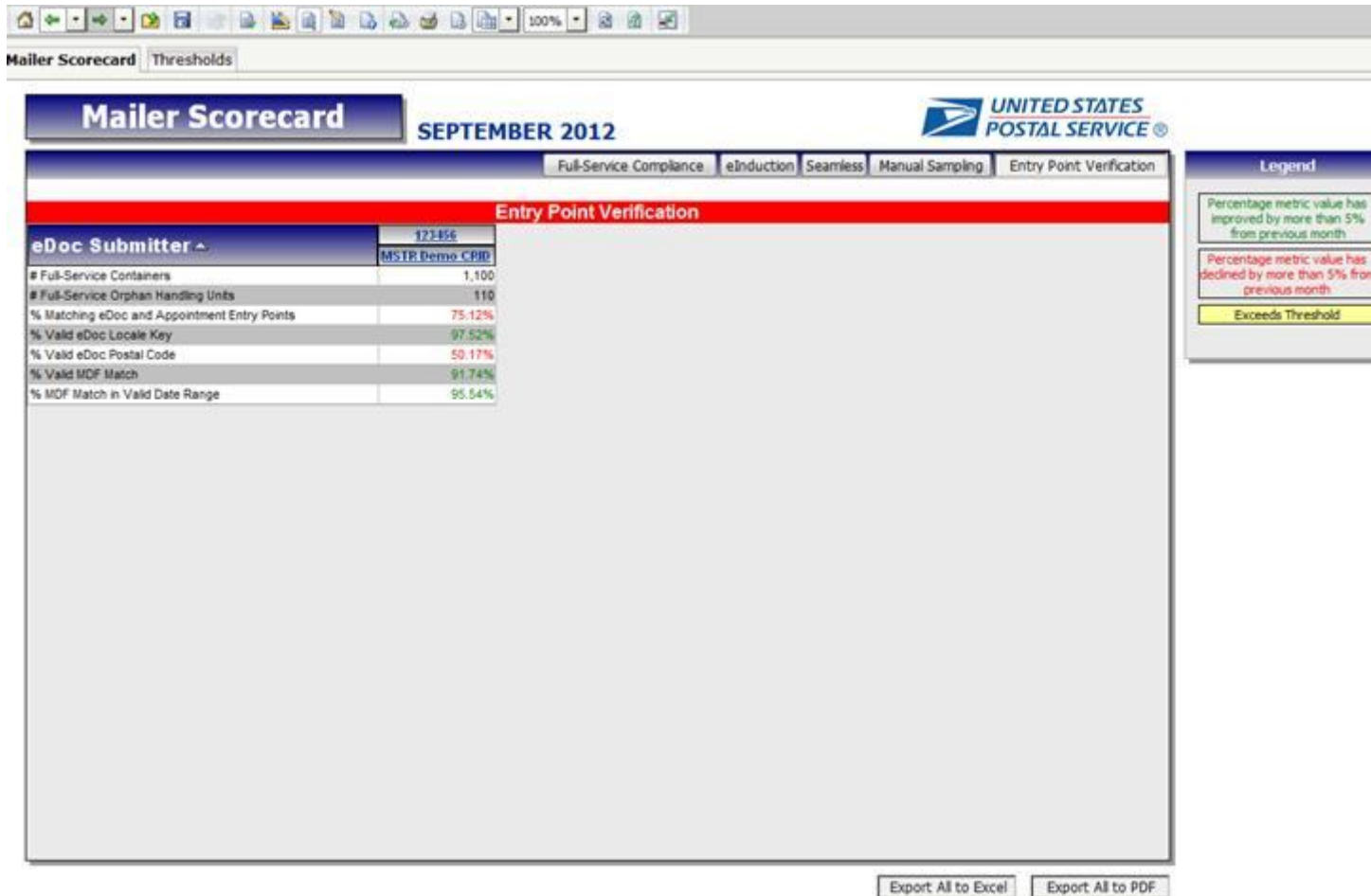


Figure 13 - Entry Point Verification Metrics

1.1.7 Drilling

The following sub-sections provide details relative to the reports users can drill to from the Mailer Scorecard. Users can drill to the detail level reports by right-clicking on the eDoc Submitter column header or specific eDoc Submitters.

Drill Name	Drill Description
------------	-------------------

Mailer Scorecard Job Details (All)	Drill to this report to see metrics from the Full-Service Compliance, eInduction, Seamless, Manual Sampling and Entry Point Verification panels of the Mailer Scorecard broken down by job.
Mailer Scorecard Job Details (Full-Service Compliance)	Drill to this report to see metrics from the Full-Service Compliance panel of the Mailer Scorecard broken down by job.
Mailer Scorecard Job Details (eInduction)	Drill to this report to see metrics from the eInduction panel of the Mailer Scorecard broken down by job.
Mailer Scorecard Job Details (Seamless)	Drill to this report to see metrics from the Seamless panel of the Mailer Scorecard broken down by job.
Mailer Scorecard Job Details (Manual Sampling)	Drill to this report to see Manual Sampling metrics at the job level.
Mailer Scorecard Job Details (Entry Point Verification)	Drill to this report to see Entry Point Verification metrics at the job level.
eInduction Job Summary Report	Drill to this report to see eInduction errors broken down by job.
View Error Details by Error Type	Drill to this report to see Manual Sampling or Entry Point Verification errors broken down by eDoc Submitter.
View Error Details by Job and Error Type	Drill to this report from any job detail report by clicking on the Mailing Group ID to see individual Full-Service Compliance, eInduction, Seamless Acceptance, Manual Sampling and Entry Point Verification errors.
Undocumented Summary Report	Drill to this report to see Undocumented errors broken down by Mailer ID.
Mailer Scorecard Weekly Trending	Drill to this report to see how metrics reported on the Mailer Scorecard have been trending week by week.

Figure 14 – Job Detail Level Report Drills

1.1.7.1 Mailer Scorecard Job Details (All)

Users can drill from the Mailer Scorecard to the Mailer Scorecard Job Details (All) report. This report encompasses all Full-Service Compliance, eInduction, Seamless Acceptance, Manual Sampling and Entry Point Verification attributes and metrics by job and is intended for users who want a holistic view of a job's performance across all programs.

This section of the report will display the following data for the selected eDoc Submitter:

Mailer Scorecard Job Details: All
eDoc Submitter
Customer Group ID
User License Code
Job ID
Mailing Date
Mailing Group ID
Bypass Seamless Acceptance Indicator
Auto-Finalization Indicator
CRID Seamless Status
Number of Containers
Number of Handling Units
Number of Pieces
Qualifies for Mail Anywhere Pay Anywhere?
Percentage of Full Service Mail Volume

Number of OCI Errors	Percentage of OCI Not in Error
Number of Container MID Errors	Percentage of Container MID Not In Error
Number of Handling Unit MID Errors	Percentage of Handling Unit MID Not in Error
Number of Piece MID Errors	Percentage of Piece MID Not in Error
Number of STID Errors	Percentage of STID Not in Error
Number of By/For Errors	Percentage of By/For Not in Error
Number of By/For Matching Errors	Percentage of By/For Matching Not in Error
Number of Container Barcode Uniqueness Errors	Percentage of Container Barcode Uniqueness Not in Error
Number of Handling Unit Barcode Uniqueness Errors	Percentage of Handling Unit Barcode Uniqueness Not in Error
Number of Piece Barcode Uniqueness Errors	Percentage of Piece Barcode Uniqueness Not in Error
Number of Container Entry Facility Errors	Percentage of Container Entry Facility Not in Error
Number of Container CSA Errors	Percentage of Container CSA Not in Error
Number of DMU Verified USPS Transported Containers	N/A
Number of Early Scheduled Ship Date Errors	Percentage of Early Scheduled Ship Date Not in Error
Percentage of Containers eInduction	
Number of PVDS eInduction Containers	
Number of Mailer Transported eInduction Containers	
Number of USPS Transported eInduction Containers	
Percentage of eInduction Containers Continuous	
Percentage of eInduction Containers SV	
Percentage of eInduction Containers without Entry Point eDoc Errors	
Percentage of eInduction Containers without Barcode eDoc Errors	
Percentage of eInduction Containers without Manual Overrides	
Percentage of eInduction Containers Released	
Percentage of eInduction Containers Not Misshipped	
Percentage of SV eInduction Containers Scanned and Accepted without Error	
Number of Seamless Acceptance Containers	
Number of Seamless Acceptance Handling Units	
Number of Seamless Acceptance Pieces	
Percentage of Volume Seamless Acceptance	
Piece Scan Rate	
Adjusted Piece Scan Rate	
Percentage of Presort Not in Error (MPE)	
Percentage of Presort Not in Error (Manual Sampling)	
Percentage of Entry Facility Not in Error	
Percentage of COA Not in Error	
Percentage of DPV Not in Error	
Number of Containers Sampled	
Number of Handling Units Sampled	
Number of Pieces Sampled	
Percentage of Container Mail Characteristic Not in Error	
Percentage of Handling Unit Mail Characteristic Not in Error	
Percentage of Piece Mail Characteristic Not in Error	
Percentage of Container Nesting/Sortation Not in Error	
Percentage of Handling Unit Nesting/Sortation Not in Error	
Percentage of Piece Nesting/Sortation Not in Error	
Percentage of Container Barcode Quality Not in Error	
Percentage of Handling Unit Barcode Quality Not in Error	
Percentage of Piece Barcode Quality Not in Error	
Percentage of Piece Weight Not in Error	

Percentage of Piece Postage Not in Error
Number of Full-Service Containers
Number of Full-Service Orphan Handling Units
Percentage of Matching eDoc and Appointment Entry Points
Percentage of Valid eDoc Locale Key
Percentage of Valid eDoc Postal Code
Percentage of Valid MDF Match
Percentage of MDF Match in Valid Date Range

Figure 15 – Mailer Scorecard Job Details (All) Metrics and Attributes

Mailer Scorecard Job Details Legend
eDoc Submitter Attributes
Full-Service Compliance Metrics
eInduction Metrics
Seamless Acceptance Attributes/Metrics
Manual Sampling Metrics
Entry Point Verification Metrics

Figure 16 – Mailer Scorecard Job Details Legend

eDoc Submitter	Customer Group ID	User License Code	Job ID	Mailing Date	Mailing Group ID	Bypass Seamless Acceptance Indicator	Auto-Finalization Indicator	CRD Seamless Status	# Containers	# Handling Units	# Pieces	Qualifier for Mail Anywhere Pay Anywhere?	
123456	MSTR Demo CRD	NSTR DEMO CRD	A124	MK091601	9/27/2012	123454	N/A	No	Seamless	15,893	546	241,651	No
			A125	MK091701	9/16/2012	123457	N/A	No	Parallel	15,893	546	241,651	No
			A125	MK091701	9/17/2012	123459	Yes	N/A	Seamless	15,893	546	241,651	No
% FS Mail Volume	# O-C Errors	% O-C Not in Error	# Container Mail Errors	% Container Mail Not in Error	# HU Mail Errors	% HU Mail Not in Error	# Piece Mail Errors	% Piece Mail Not in Error	# STD Errors	% STD Not in Error	# By/Fac Errors	% By/Fac Not in Error	# By/Fac Matching Errors
0.00%	N/A	100.00%	0	100.00%	826	0.00%	N/A	N/A	N/A	N/A	N/A	N/A	N/A
1.29%	78	85.71%	0	100.00%	0	100.00%	0	100.00%	0	100.00%	0	100.00%	0
0.00%	N/A	100.00%	0	100.00%	0	100.00%	N/A	N/A	N/A	N/A	N/A	N/A	N/A
10.03%	N/A	N/A	0	100.00%	N/A	N/A	0	100.00%	0	100.00%	0	100.00%	4
# Container Barcode Uniqueness Errors	% Container Barcode Uniqueness Not in Error	# HU Barcode Uniqueness Errors	% HU Barcode Uniqueness Not in Error	# Piece Barcode Uniqueness Errors	% Piece Barcode Uniqueness Not in Error	# Container Entry Facility Errors	% Container Entry Facility Not in Error	# Container CSA Errors	% Container CSA Not in Error	# DMU Verified Transported Containers	# Early Scheduled Ship Date		
0	100.00%	0	100.00%	N/A	N/A	0	100.00%	0	100.00%	N/A	N/A		
0	100.00%	0	100.00%	0	100.00%	0	100.00%	0	100.00%	N/A	N/A		
0	100.00%	0	100.00%	N/A	N/A	0	100.00%	0	100.00%	N/A	N/A		
96	23.81%	N/A	N/A	0	100.00%	0	100.00%	0	100.00%	N/A	N/A		
% Early Scheduled Ship Date Not in Error	% Containers Induction	# PVDS Induction Containers	# Mailer Transported Induction Containers	# USPS Transported Induction Containers	% Induction Containers Continuous	% Induction Containers SV	% Induction Containers without Entry Point errors	% Induction Containers without Barcode errors	% Induction Containers without Manual Overrides	% Induction Containers Released	% Induction Containers Not Misshipped		
N/A	0.49%	N/A	45	N/A	57.69%	100.00%	100.00%	100.00%	0.00%	100.00%	100.00%		
N/A	100.00%	54	N/A	78	0.00%	100.00%	99.21%	99.63%	99.69%	99.92%	100.00%		
N/A	0.85%	64	15	241	100.00%	0.00%	0.00%	100.00%	0.00%	100.00%	100.00%		
N/A	19.00%	45,654	N/A	44	0.00%	100.00%	100.00%	0.00%	0.00%	100.00%	100.00%		
% SV Induction Containers Cleared & Accepted	% Seamless Acceptance Containers	# Seamless Acceptance Handling Units	# Seamless Acceptance Pieces	% Volume Seamless Acceptance	Piece Scan Rate	Adjusted Piece Scan Rate	% Presort Not in Error (MPL)	% Presort Not in Error (Manual Sampling)	% Entry Facility Not in Error	% COA Not in Error	% DPV Not in Error		
10.81%	0	0	4,654	1.90%	N/A	100.00%	100.00%	N/A	N/A	100.00%	99.60%		
100.00%	0	0	0	0.00%	N/A	N/A	N/A	N/A	N/A	N/A	N/A		
N/A	N/A	N/A	N/A	N/A	N/A	N/A	N/A	N/A	N/A	N/A	N/A		
N/A	24	0	4,634	100.00%	N/A	N/A	100.00%	94.74%	100.00%	100.00%	100.00%		
# Containers Sampled	# Handling Units Sampled	# Pieces Sampled	# Container Mail Characteristic Not in Error	% HU Mail Characteristic Not in Error	% Piece Mail Characteristic Not in Error	% Container Resting/Sortation Not in Error	% HU Resting/Sortation Not in Error	% Piece Resting/Sortation Not in Error	% Container Barcode Quality Not in Error	% HU Barcode Quality Not in Error			
N/A	N/A	N/A	N/A	N/A	N/A	N/A	N/A	N/A	N/A	N/A			
N/A	N/A	N/A	N/A	N/A	N/A	N/A	N/A	N/A	N/A	N/A			
N/A	N/A	N/A	N/A	N/A	N/A	N/A	N/A	N/A	N/A	N/A			
N/A	N/A	N/A	N/A	N/A	N/A	N/A	N/A	N/A	N/A	N/A			
% Piece Barcode Quality Not in Error	% Piece Weight Not in Error	% Piece Postage Not in Error	# Full-Service Containers	# Full-Service Orphan Handling Units	% Matching eDoc and Appointment Entry Points	% Valid eDoc Locale Key	% Valid eDoc Postal Code	% Valid MDF Match	% MDF Match in Valid Date Range				
N/A	N/A	N/A	N/A	15,893	56	95.12%	100.00%	95.07%	99.92%				
N/A	N/A	N/A	N/A	15,893	3	100.00%	99.51%	100.00%	99.99%				
N/A	N/A	N/A	N/A	15,893	44	99.55%	99.98%	99.99%	99.23%				
N/A	N/A	N/A	N/A	126	1	100.00%	100.00%	100.00%	99.21%				

Figure 17 – Mailer Scorecard Job Details (All) Metrics and Attributes

1.1.7.2 Mailer Scorecard Job Details (Full-Service Compliance)

Users can drill from the Mailer Scorecard to the Mailer Scorecard Job Details (Full-Service Compliance) report. This report encompasses only Full-Service Compliance attributes and metrics by job and is intended for users who want to focus their investigation on Full-Service Compliance.

This section of the report will display the following data for the selected eDoc Submitter:

Mailer Scorecard Job Details: Full-Service Compliance	
eDoc Submitter	
Customer Group ID	
User License Code	
Job ID	
Mailing Date	
Mailing Group ID	
Number of Containers	
Number of Handling Units	
Number of Pieces	
Qualifies for Mail Anywhere Pay Anywhere?	
Percentage of Full Service Mail Volume	
Number of OCI Errors	Percentage of OCI Not in Error
Number of Container MID Errors	Percentage of Container MID Not In Error
Number of Handling Unit MID Errors	Percentage of Handling Unit MID Not in Error
Number of Piece MID Errors	Percentage of Piece MID Not in Error
Number of STID Errors	Percentage of STID Not in Error
Number of By/For Errors	Percentage of By/For Not in Error
Number of By/For Matching Errors	Percentage of By/For Matching Not in Error
Number of Container Barcode Uniqueness Errors	Percentage of Container Barcode Uniqueness Not in Error
Number of Handling Unit Barcode Uniqueness Errors	Percentage of Handling Unit Barcode Uniqueness Not in Error
Number of Piece Barcode Uniqueness Errors	Percentage of Piece Barcode Uniqueness Not in Error
Number of Container Entry Facility Errors	Percentage of Container Entry Facility Not in Error
Number of Container CSA Errors	Percentage of Container CSA Not in Error
N/A	Number of DMU Verified USPS Transported Containers
Number of Early Scheduled Ship Date Errors	Percentage of Early Scheduled Ship Date Not in Error

Figure 18 – Mailer Scorecard Job Details (Full-Service Compliance) Metrics and Attributes

eDoc Submitter	Customer Group ID	User License Code	Job ID	Mailing Date	Mailing Group ID	# Containers	# Handling Units	# Pieces	Qualifies for Mail Anywhere Play	% FS Mail Volume	# OCI Errors	% OCI Not in Error
123456	MSTR Demo CRD	MSTR DEMO CRD	A124	MK051601	9/17/2012	123456	0	2,143	No	0.00%	N/A	N/A
			A125	MK051701	9/18/2012	123457	15,893	548	241,651	No	0.00%	N/A

# Container MID Errors	% Container MID Not in Error	# HU MID Errors	% HU MID Not in Error	# Piece MID Errors	% Piece MID Not in Error	# STD Errors	% STD Not in Error	# DylFor Errors	% DylFor Not in Error	# DylFor Matching Errors	% DylFor Matching Errors
0	100.00%	N/A	N/A	N/A	N/A	N/A	N/A	N/A	N/A	N/A	N/A
0	100.00%	0	100.00%	N/A	N/A	N/A	N/A	N/A	N/A	N/A	N/A

# Container Barcode Uniqueness Errors	% Container Barcode Uniqueness Not in Error	# HU Barcode Uniqueness Errors	% HU Barcode Uniqueness Not in Error	# Piece Barcode Uniqueness Errors	% Piece Barcode Uniqueness Not in Error	# Container Entry Facility Errors	% Container Entry Facility Not in Error	# Container CSA Errors	% Container CSA Not in Error	# DMU Verified Transported Containers	Early Schedule Ship Date Error
0	100.00%	N/A	N/A	N/A	N/A	0	100.00%	0	100.00%	N/A	N/A
0	100.00%	0	100.00%	N/A	N/A	0	100.00%	0	100.00%	N/A	N/A

Figure 19 - Screenshot of Mailer Scorecard Job Details (Full-Service Compliance)

1.1.7.3 Mailer Scorecard Job Details (eInduction)

Users can drill from the Mailer Scorecard to the Mailer Scorecard Job Details (eInduction) report. This report encompasses only eInduction attributes and metrics by job and is intended for users who want to focus their investigation on eInduction.

This section of the report will display the following data for the selected eDoc Submitter:

Mailer Scorecard Job Details: eInduction	
eDoc Submitter	
Customer Group ID	
User License Code	
Job ID	
Mailing Date	
Mailing Group ID	
Number of Containers	
Percentage of Containers eInduction	
Number of PVDS eInduction Containers	
Number of Mailer Transported eInduction Containers	
Number of USPS Transported eInduction Containers	
Percentage of eInduction Containers Continuous	
Percentage of eInduction Containers SV	
Percentage of eInduction Containers without Entry Point eDoc Errors	
Percentage of eInduction Containers without Barcode eDoc Errors	
Percentage of eInduction Containers without Manual Overrides	
Percentage of eInduction Containers Released	
Percentage of eInduction Containers Not Misshipped	
Percentage of SV eInduction Containers Scanned and Accepted without Error	

Figure 20 - Mailer Scorecard Job Details (eInduction) Metrics and Attributes

eDoc Submitter	Customer Group ID	User License Code	Job ID	Mailing Date	Mailing Group ID	# Containers	% Containers eInduction	# USPS eInduction Containers	# Mailer Transported eInduction Containers	# USPS Transported eInduction Containers	% eInduction Containers Continuous
		A124	MK091801	9/17/2012	121453	15,893	4.90%	N/A	N/A	N/A	0.00%
					121454	15,893	0.49%	N/A	48	N/A	57.69%
					121455	15,893	800.00%	54	N/A	78	0.00%
					121456	126	36.51%	N/A	442	N/A	100.00%
121456	USTR Demo CRD	USTR DEMO CRD		9/16/2012	121457	15,893	0.15%	84	15	341	100.00%
		A125	MK091701	9/17/2012	121458	126	0.00%	45	454	454	N/A
					121459	126	800.00%	N/A	N/A	N/A	5.70%

% eInduction Containers SV	% eInduction Containers without Entry Point eDoc	% eInduction Containers without Barcode eDoc Errors	% eInduction Containers without Manual Overrides	% eInduction Containers Released	% eInduction Containers Not Mismatched	% SV eInduction Containers Received & Accepted via Entry
100.00%	100.00%	100.00%	100.00%	94.30%	0.25%	N/A
100.00%	100.00%	100.00%	0.00%	100.00%	100.00%	15.81%
100.00%	99.21%	99.63%	99.86%	99.92%	100.00%	100.00%
0.00%	100.00%	0.00%	91.30%	100.00%	100.00%	0.00%
0.00%	0.00%	100.00%	0.00%	100.00%	100.00%	N/A
N/A	N/A	N/A	N/A	N/A	N/A	N/A
0.25%	100.00%	100.00%	100.00%	100.00%	100.00%	N/A

Figure 21 - Screenshot of Mailer Scorecard Job Details (eInduction)

1.1.7.4 Mailer Scorecard Job Details (Seamless)

Users can drill from the Mailer Scorecard to the Mailer Scorecard Job Details (Seamless) report. This report encompasses only Seamless attributes and metrics by job and is intended for users who want to focus their investigation on Seamless Acceptance.

This section of the report will display the following data for the selected eDoc Submitter:

Mailer Scorecard Job Details: Seamless
eDoc Submitter
Customer Group ID
User License Code
Job ID
Mailing Date
Mailing Group ID
Bypass Seamless Acceptance Indicator
Auto-Finalization Indicator
CRID Seamless Status
Number of Seamless Acceptance Containers
Number of Seamless Acceptance Handling Units
Number of Seamless Acceptance Pieces
Percentage of Volume Seamless Acceptance
Piece Scan Rate
Adjusted Piece Scan Rate
Percentage of Presort Not in Error (MPE)
Percentage of Presort Not in Error (Manual Sampling)
Percentage of Entry Facility Not in Error

Percentage of COA Not in Error
Percentage of DPV Not in Error

Figure 22 – Mailer Scorecard Job Details (Seamless) Metrics and Attributes

The Auto-Finalization Indicator will display with a yellow background and black text when the value is 'N'.

eDoc Submitter	Customer Group	User License Code	Job ID	Mailing Date	Mailing Group ID	Bypass Seamless Acceptance Indicator	Auto-Finalization Indicator	CRD Seamless Status	# Seamless Acceptance Containers
123456	MSTR Demo CRD	MSTR DEMO CRD	12345678	9/10/2012	123456	Yes	N/A	None	N/A
		4124	12345678	9/10/2012	123456	N/A	Yes	Seamless	0
			12345678	9/10/2012	123456	N/A	No	Partial	0
			12345678	9/10/2012	123456	Yes	N/A	None	N/A
			12345678	9/10/2012	123456	Yes	N/A	None	N/A

# Seamless Acceptance Handling Units	# Seamless Acceptance Pieces	% Volume Seamless Acceptance	Piece Scan Rate	Adjusted Piece Scan Rate	% Presort Not in Error (RPM)	% Presort Not in Error (Manual Sampling)	% Entry Facility Not in Error	% COA Not in Error	% DPV Not in Error
N/A	N/A	N/A	N/A	N/A	N/A	N/A	N/A	N/A	N/A
0	4,854	100%	N/A	100.00%	100.00%	N/A	N/A	100.00%	99.80%
0	0	0.00%	N/A	N/A	N/A	N/A	N/A	N/A	N/A
N/A	N/A	N/A	N/A	N/A	N/A	N/A	N/A	N/A	N/A
N/A	N/A	N/A	N/A	N/A	N/A	N/A	N/A	N/A	N/A

Figure 23 – Screenshot of Mailer Scorecard Job Details (Seamless)

1.1.7.5 Mailer Scorecard Job Details (Manual Sampling)

Users can drill from the Mailer Scorecard to the Mailer Scorecard Job Details (Manual Sampling) report. This report encompasses only Manual Sampling attributes and metrics by job and is intended for users who want to focus their investigation on Manual Sampling.

This section of the report will display the following data for the selected eDoc Submitter:

Mailer Scorecard Job Details: Manual Sampling
eDoc Submitter
Customer Group ID
User License Code
Job ID
Mailing Date
Mailing Group ID
Number of Containers Sampled
Number of Handling Units Sampled
Number of Pieces Sampled
Percentage of Container Barcode Quality Not in Error
Percentage of Container Mail Characteristic Not in Error
Percentage of Container Nesting/Sortation Not in Error

Percentage of Handling Unit Barcode Quality Not in Error
Percentage of Handling Unit Mail Characteristic Not in Error
Percentage of Handling Unit Nesting/Sortation Not in Error
Percentage of Piece Barcode Quality Not in Error
Percentage of Piece Mail Characteristic Not in Error
Percentage of Piece Nesting/Sortation Not in Error
Percentage of Piece Postage Not in Error
Percentage of Piece Weight Not in Error

Figure 24 - Mailer Scorecard Job Details (Manual Sampling) Metrics and Attributes

eDoc Submitter	Customer Group ID	User License Code	Job ID	Mailing Date	Mailing Group ID	# Containers Sampled	# Handling Units Sampled	# Pieces Sampled	% Container Mail Characteristic Not in Error	% HU Mail Characteristic Not in Error	% P...
		A124	MK091601	9/17/2012	123456	N/A	N/A	N/A	N/A	N/A	N/A
					123456	4	1	545	100.00%	0.00%	
					123456	N/A	N/A	N/A	N/A	N/A	N/A
123456	MSTR Demo CRD	MSTR DEMO CRD		9/16/2012	123456	N/A	N/A	N/A	N/A	N/A	N/A

% Container Nesting/Sortation Not in Error	% HU Nesting/Sortation Not in Error	% Piece Nesting/Sortation Not in Error	% Container Barcode Quality Not in Error	% HU Barcode Quality Not in Error	% Piece Barcode Quality Not in Error	% Piece Weight Not in Error	% Piece Postage Not in Error
N/A	N/A	N/A	N/A	N/A	N/A	N/A	N/A
0.00%	0.00%	97.25%	0.00%	0.00%	96.51%	0.00%	91.74%
N/A	N/A	N/A	N/A	N/A	N/A	N/A	N/A
N/A	N/A	N/A	N/A	N/A	N/A	N/A	N/A
N/A	N/A	N/A	N/A	N/A	N/A	N/A	N/A

Figure 25 - Screenshot of Mailer Scorecard Job Details (Manual Sampling)

1.1.7.6 Mailer Scorecard Job Details (Entry Point Verification)

Users can drill from the Mailer Scorecard to the Mailer Scorecard Job Details (Entry Point Verification) report. This report encompasses only Entry Point Verification attributes and metrics by job and is intended for users who want to focus their investigation on Entry Point Verification errors.

This section of the report will display the following data for the selected eDoc Submitter:

Mailer Scorecard Job Details: Entry Point Verification
eDoc Submitter
Customer Group ID
User License Code
Job ID
Mailing Date
Mailing Group ID
Number of Full-Service Orphan Handling Units
Number of Full-Service Containers

Percentage of Matching eDoc and Appointment Entry Points
Percentage of Valid eDoc Locale Key
Percentage of Valid eDoc Postal Code
Percentage of Valid MDF Match
Percentage of MDF Match in Valid Date Range

Figure 26 - Mailer Scorecard Job Details (Entry Point Verification) Metrics and Attributes

eDoc Submitter	Customer Group ID	User License Code	Job ID	Mailing Date	Mailing Group ID	# Full-Service Containers	# Full-Service Orphan Handling Units	% Matching eDoc and Appointment Entry Points	% Valid eDoc Locale Key	% Valid eDoc Postal Code	% Valid MDF Match	% MDF Match in Valid Date Range	
123456	MSTR Demo CRD	MSTR DEMO CRD	A124	MK091601	8/17/2012	123453	15,893	0	100.00%	99.99%	100.00%	100.00%	
						123456	126	76	33.66%	33.17%	66.32%	63.17%	44.55%
					8/27/2012	123454	15,893	50	95.12%	100.00%	95.07%	99.92%	99.99%
						123455	15,893	3	100.00%	99.51%	100.00%	99.99%	99.45%
	A125	MK091701	8/16/2012	123457	15,893	44	99.55%	99.98%	99.99%	99.23%	99.63%		
				123459	126	1	100.00%	100.00%	100.00%	99.21%	99.21%		
			8/17/2012	123460	126	1	72.44%	100.00%	99.21%	88.19%	99.21%		
				123458	126	18	99.31%	99.31%	87.50%	84.72%	84.72%		
8/27/2012	123458	126	1	0.00%	23.62%	99.21%	99.21%	74.02%					

Figure 27 - Screenshot of Mailer Scorecard Job Details (Entry Point Verification)

1.1.7.7 eInduction Job Summary Report

Users can right-click from the Mailer Scorecard and select the eInduction Job Summary Report to see data associated to eInduction metrics. Users can further drill to the existing eInduction Container Status report by clicking the hyperlink in the Mailing Group ID column. For further information regarding eInduction reports, please review existing eInduction user documentation.

eDoc Submitter	Mailing Date	Job ID	User License Code	Customer Group ID	Mailing Group ID	# Containers Submitted for eInduction	# Containers Finalized/FPP for eInduction
20490409 - STREAMLINED ACCEPTANCE (63101)	8/2/2012	V01R32GC	PH01		361216	123	15
Total						123	15

# Containers Finalized/FPP for eInduction	# Containers Sent to SV	# Containers Sent to FAST	# Containers with SV Unload Scan	# Containers with eInduction Errors	% Containers with eInduction Errors	# Unique Barcode Errors	# Barcode Format Errors	# Pre-Induction EPD Errors	# Missing Barcode Errors	# Pre-Induction Payment Errors
15	19	3	6	1	0.81%	7	4	3	4	1
15	19	3	6	1	0.81%	7	4	3	4	1

# Single Appointment Errors	# USPS Transported Appointment Errors	# Container Manifest Errors	# Pre-Induction Zone Based Errors	# Labeling List Errors	# Post-Induction EPD Errors	# Post-Induction Payment Errors	# Post-Induction Zone Based Errors	# FAST Appointment Errors	# Missshipped Containers	# SV Unscannable Errors	# Duplicate Barcode Scan Errors
14	15	6	7	2	6	11	9	3	5	9	4
14	15	6	7	2	6	11	9	3	5	9	4

Figure 28 – eInduction Job Summary Report

1.1.7.8 View Error Details by Error Type

Users can drill from the Mailer Scorecard to the View Error Details by Error Type report to see the details of Full-Service, Seamless Acceptance, Manual Sampling and Entry Point Verification errors. This provides an easy way to link the Mailer Scorecard to the existing suite of Seamless Acceptance reports. When drilling, the user is required to filter on Seamless Acceptance errors, Full-Service Compliance errors, Manual Sampling errors and Entry Point Verification errors.

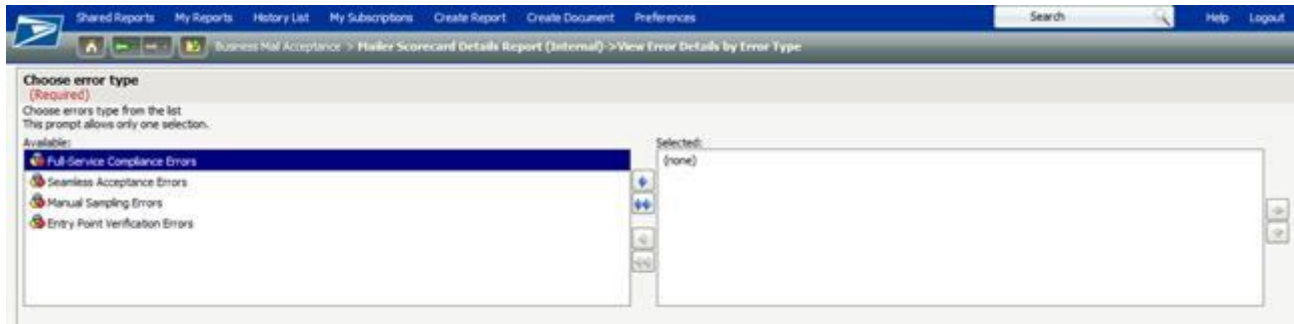


Figure 29 - View Error Details by Error Type Drill

Upon selection of error grouping, data will return and user can further drill to Seamless Acceptance Job Error Type report or Seamless Acceptance Error Type Trending report when clicking on the hyperlink in the Error Type column. For further information regarding Seamless Report, please review existing Seamless Acceptance user documentation.

eDoc Submitter	Error Type	Threshold	# Container Errors	# Handling Unit Errors					
3275196 - 123 STORE (94403-2503)	Entry Facility	70.00%	1	0					
# Piece Errors	# Projected Container Errors	# Projected Handling Unit Errors	# Projected Piece Errors	% Containers Not in Error	% Handling Units Not in Error	% Pieces Not in Error	% Containers Not in Error National Average	% Handling Units Not in Error National Average	% Pieces Not in Error National Average
0	1	0	0	99.97%	100.00%	100.00%	99.98%	100.00%	100.00%

Figure 30 – Seamless Acceptance Error Type Report

eDoc Submitter	Error Type	Threshold	# Container Errors	# Handling Unit Errors
20400555 - 123 STORE (94403-2503)	Barcode Use		1	0
20400555 - 123 STORE (94403-2503)	Entry Facility		4	0
20400555 - 123 STORE (94403-2503)	Mailer ID		1	1
20400555 - 123 STORE (94403-2503)	Neatening/Sortation		3	0

Figure 31 – Drills to further investigate errors.

1.1.7.9 Undocumented Summary Report

Users can drill from the Mailer Scorecard to the Undocumented Summary Report in order to investigate the details of undocumented piece counts.

REPORT DETAILS	
Report Filter:	(Month = JULY 2012) And ((eDoc Submitter) (0)) <- ^-17
PAGE BY:	Source: All Sources

Mailer CRID ▲	Mailer ID ▲	# Undocumented Containers ▼	# Undocumented Handling Units ▼	# Undocumented Pieces ▼
2000003 - MSTR Demo CRID23	20406302	0	0	65,987
3000002 - MSTR Demo CRID32	20406301	0	0	41,964

Figure 32 – Screenshot of Undocumented Summary Report

Users can further drill to the existing Undocumented Reports by right-clicking on the Mailing Group ID: Undocumented Report by Scan Facility, Undocumented Trending Report and Undocumented Detailed Report.

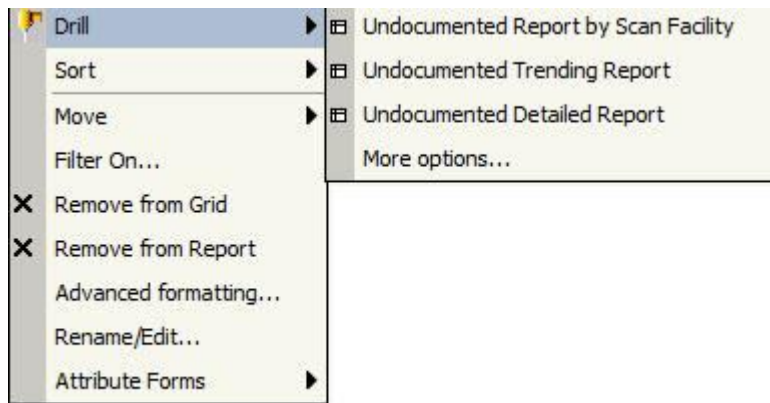


Figure 33 - Drill to further investigate undocumented postage.

1.1.7.10 Mailer Scorecard Weekly Trending

Users can drill from the Mailer Scorecard to the Mailer Scorecard Weekly Trending report. This report displays as a graph and encompasses a Page-By selector that allows users to see how metrics that are reported on the Mailer Scorecard have been trending week-by-week. This section of the report displays Mailer Scorecard percentage metrics individually, with the exception of undocumented pieces, when selected from the Page-By. This graph is broken-down by postal week.

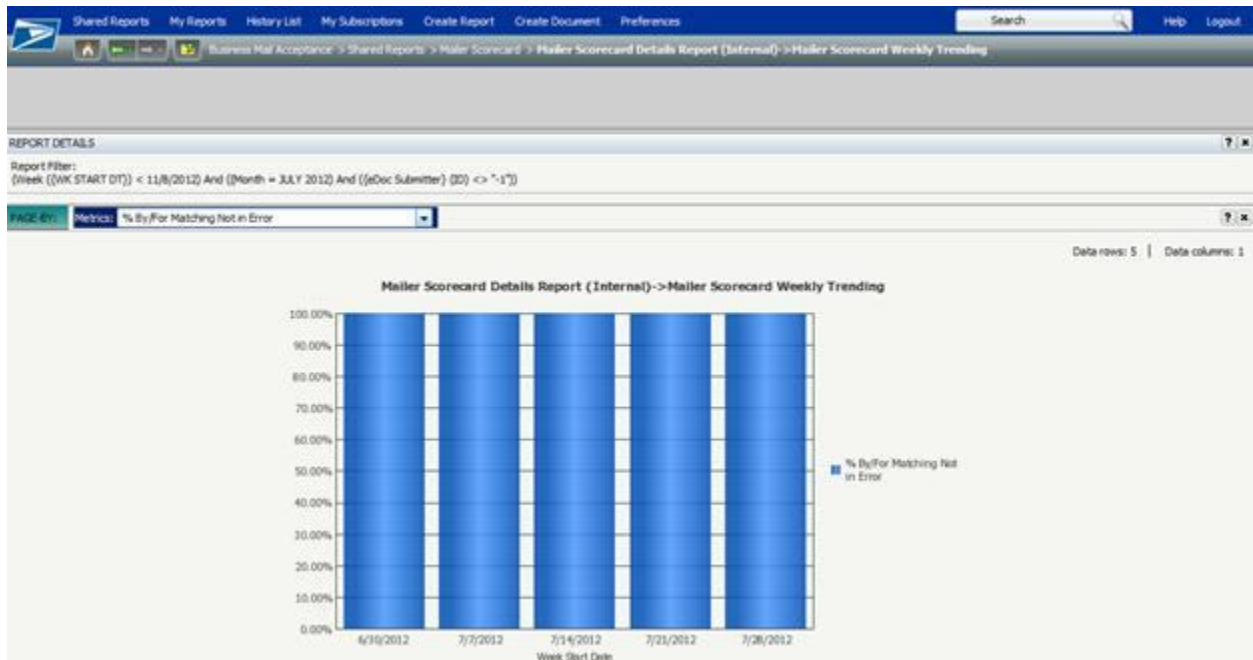


Figure 34 – Screenshot of Mailer Scorecard Weekly Trending Report

1.1.8 Exporting to PDF and Excel

The Mailer Scorecard allows all data to be exported in a single PDF or Excel file by using the buttons provided at the bottom of the report. This is useful for users who want to see everything on a single page or want to perform manual calculations on the data.



Mailer Scorecard Details Report

eDoc Submitter	123456
	MSTR Demo CRID
CRID Seamless Status	Seamless
# Containers	16,019
# Handling Units	546
# Pieces	243,794
Qualifies for Mail Anywhere Pay Anywhere?	No
# Full-Service Pieces	40
% FS Mail Volume	0.02%
# OCI Errors	143
% OCI Not In Error	73.81%
# Container MID Errors	45
% Container MID Not In Error	95.91%
# HU MID Errors	54
% HU MID Not In Error	90.11%
# Piece MID Errors	65
% Piece MID Not In Error	0.00%
# STID Errors	546
% STID Not In Error	0.00%
# By/For Errors	579
% By/For Not In Error	0.00%
# By/For Matching Errors	7
% By/For Matching Not In Error	82.50%
# Container Barcode Uniqueness Errors	68
% Container Barcode Uniqueness Not In Error	93.82%
# HU Barcode Uniqueness Errors	60
% HU Barcode Uniqueness Not In Error	89.01%
# Piece Barcode Uniqueness Errors	27
% Piece Barcode Uniqueness Not In Error	32.50%
# Container Entry Facility Errors	11
% Container Entry Facility Not In Error	99.00%
# Container CSA Errors	14
% Container CSA Not In Error	98.73%
# Early Scheduled Ship Date Errors	133
# DMU Verified USPS Transported Containers	41
% Early Scheduled Ship Date Not In Error	0.00%
% Containers eInduction	0.09%
# PVDS eInduction Containers	161
# Mailer Transported eInduction Containers	130
# USPS Transported eInduction Containers	188
% eInduction Containers Continuous	100.00%
% eInduction Containers SV	92.86%
% eInduction Containers without Entry Point eDocs Errors	0.00%
% eInduction Containers without Barcode eDocs Errors	0.00%
% eInduction Containers without Manual Overrides	7.14%
% eInduction Containers Released	0.00%
% eInduction Containers Not Misshipped	0.00%
% SV eInduction Containers Scanned & Accepted w/o Error	100.00%
# Seamless Acceptance Jobs	61
# Bypass Seamless Acceptance Jobs	5

Figure 35 – Exported to PDF Document



Mailer Scorecard Details Report

eDoc Submitter

123456

MSTR Demo CRID

# Seamless Acceptance Containers	9
# Seamless Acceptance Handling Units	71
# Seamless Acceptance Pieces	1,603
% Volume Seamless Acceptance	0.66%
% Seamless Acceptance Jobs Auto-Finalized	0.00%
Piece Scan Rate	14.58%
Adjusted Piece Scan Rate	66.67%
% Presort Not in Error (MPE)	99.50%
% Presort Not in Error (Manual Sampling)	54.55%
% Entry Facility Not in Error	0.00%
% COA Not in Error	95.45%
% DPV Not in Error	93.39%
% Documented Pieces	99.50%
# Containers Sampled	48,978
# Handling Units Sampled	55
# Pieces Sampled	45,458
% Container Mail Characteristic Not in Error	99.88%
% HU Mail Characteristic Not in Error	0.00%
% Piece Mail Characteristic Not in Error	98.80%
% Container Nesting/Sortation Not in Error	96.90%
% HU Nesting/Sortation Not in Error	0.00%
% Piece Nesting/Sortation Not in Error	99.02%
% Container Barcode Quality Not in Error	99.80%
% HU Barcode Quality Not in Error	0.00%
% Piece Barcode Quality Not in Error	87.91%
% Piece Weight Not in Error	98.79%
% Piece Postage Not in Error	98.81%
# Full-Service Containers	1,100
# Full-Service Orphan Handling Units	110
% Matching eDoc and Appointment Entry Points	75.12%
% Valid eDoc Locale Key	97.52%
% Valid eDoc Postal Code	50.17%
% Valid MDF Match	91.74%
% MDF Match in Valid Date Range	95.54%

Figure 36 - Exported to PDF Document, Continued

1.2 Appendix

1.2.1 Mailer Scorecard Map

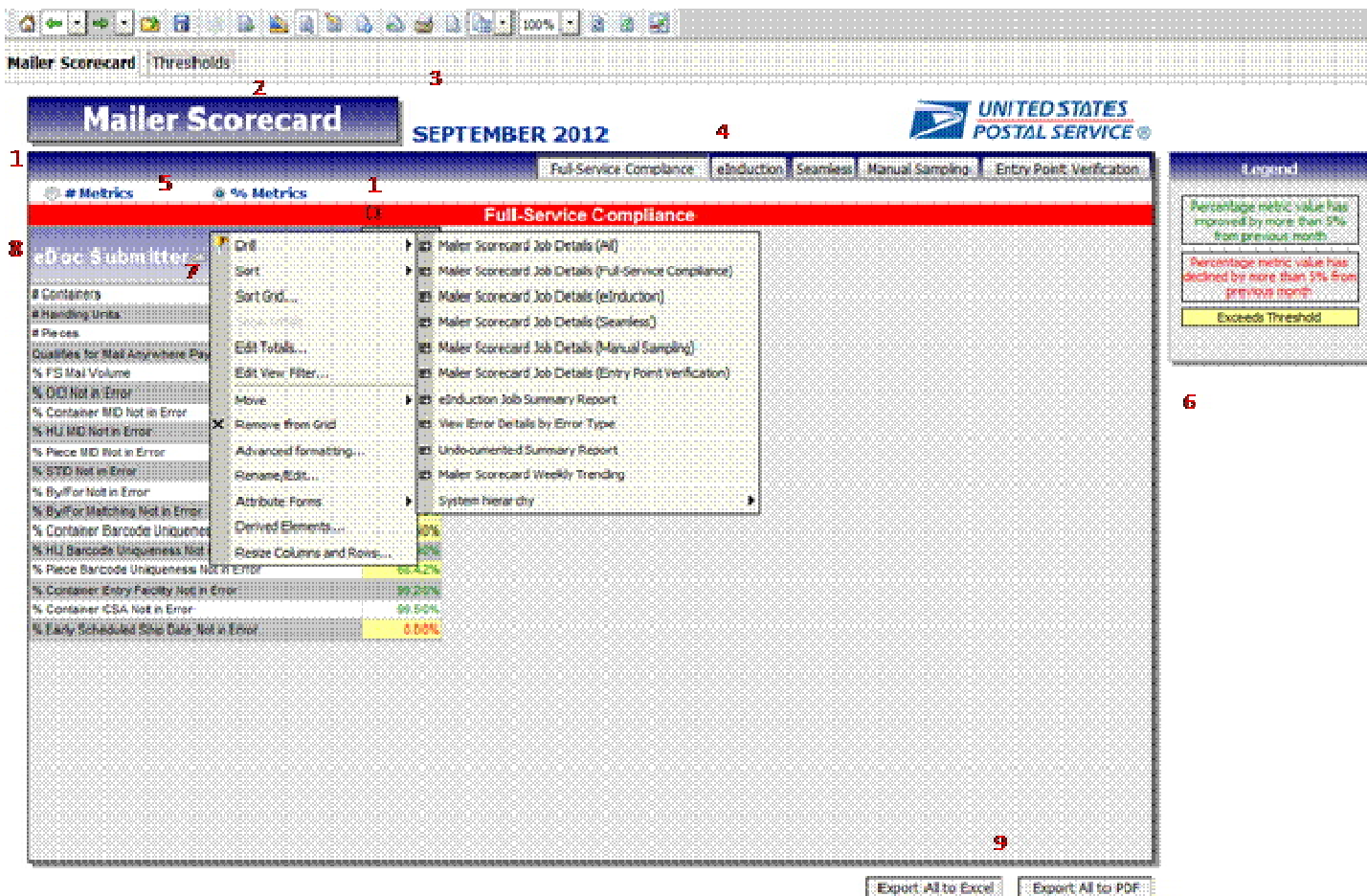


Figure 37 – Mailer Scorecard Map

Map Number	Description
1	Mailer Scorecard: Allows user to view Mailer Scorecard Dashboard
2	Thresholds: Allows user to view USPS-configurable threshold values (discussed in detail in section 1.1.1).
3	Month/Year: Allows user to view the month selection that was made on initial date prompt

4	Panels: Five panels that the user can toggle between to view metrics specific to Full-Service Compliance, eInduction, Seamless, Manual Sampling and Entry Point Verification, respectively.
5	% Metrics/# Metrics: Two radio buttons allowing the user to adjust metrics to display in either percentage or number form as preferred.
6	Legend: Allows users to view a static legend explaining the conditional formatting (color coding) used within the Mailer Scorecard (discussed in detail in section 1.1.1).
7	eDoc Submitter column headers: Allows users to view a single eDoc Submitter (and corresponding data) per column. Users can also right-click these column headers (eDoc Submitters) to drill to more detailed reports.
8	Report rows: Allows users the view metrics for eDoc Submitters across rows.
9	Export All to Excel/Export All to PDF: Allows users to export Mailer Scorecard information to excel and PDF (discussed in detail in section 1.1.8).
10	Title Bar: Allows user to see (in white text and red background font) what panel they are currently viewing (Full-Service Compliance, eInduction, Seamless, Manual Sampling and Entry Point Verification).

1.2.2 Field Map

The Field Mapping chart provides a map for users to identify specific fields that are located on each report.

Field Name	Mailer Scorecard					Job Level Drill					
	FS	EIN	SA	Manual	EPV	All	FS	EIN	SA	Manual	EPV
Adjusted Piece Scan Rate			X			X			X		
Auto-Finalization Indicator						X			X		
Bypass Seamless Acceptance Indicator						X			X		
CRID Seamless Status			X			X			X		
Customer Group ID						X	X	X	X	X	X
eDoc Submitter						X	X	X	X	X	X
Job ID						X	X	X	X	X	X
Mailing Date						X	X	X	X	X	X
Mailing Group ID						X	X	X	X	X	X
Number of Full-Service Orphan Handling Units					X	X					X
Number of By/For Errors	X					X	X				
Number of By/For Matching Errors	X					X	X				
Number of Bypass Seamless Acceptance Jobs			X								
Number of Container Barcode Uniqueness Errors	X					X	X				
Number of Container CSA Errors	X					X	X				
Number of Container Entry Facility Errors	X					X	X				

Field Name	Mailer Scorecard					Job Level Drill					
	FS	EIN	SA	Manual	EPV	All	FS	EIN	SA	Manual	EPV
Number of Container MID Errors	X					X	X				
Number of Containers	X	X				X	X	X			
Number of Containers Sampled				X		X				X	
Number of DMU Verified USPS Transported Containers	X					X	X				
Number of Early Scheduled Ship Date Errors	X					X	X				
Number of Full Service Pieces	X										
Number of Full-Service Containers					X	X					X
Number of Handling Unit Barcode Uniqueness Errors	X					X	X				
Number of Handling Unit MID Errors	X					X	X				
Number of Handling Units	X					X	X				
Number of Handling Units Sampled				X		X				X	
Number of Mailer Transported eInduction Containers		X				X		X			
Number of OCI Errors	X					X	X				
Number of Piece Barcode Uniqueness Errors	X					X	X				
Number of Piece MID Errors	X					X	X				
Number of Pieces	X					X	X				
Number of Pieces Sampled				X		X				X	
Number of PVDS eInduction Containers		X				X		X			
Number of Seamless Acceptance Containers			X			X			X		
Number of Seamless Acceptance Handling Units			X			X			X		
Number of Seamless Acceptance Jobs			X								
Number of Seamless Acceptance Pieces			X			X			X		
Number of STID Errors	X					X	X				
Number of USPS Transported eInduction Containers		X				X		X			
Percentage of By/For Matching Not in Error	X					X	X				
Percentage of By/For Not in Error	X					X	X				
Percentage of COA Not in Error			X			X			X		
Percentage of Container Barcode				X		X				X	

Field Name	Mailer Scorecard					Job Level Drill					
	FS	EIN	SA	Manual	EPV	All	FS	EIN	SA	Manual	EPV
Quality Not in Error											
Percentage of Container Barcode Uniqueness Not in Error	X					X	X				
Percentage of Container CSA Not in Error	X					X	X				
Percentage of Container Entry Facility Not in Error	X					X	X				
Percentage of Container Mail Characteristic Not in Error				X		X				X	
Percentage of Container MID Not In Error	X					X	X				
Percentage of Container Nesting/Sortation Not in Error				X		X				X	
Percentage of Containers eInduction		X				X		X			
Percentage of Documented Pieces			X								
Percentage of DPV Not in Error			X			X			X		
Percentage of Early Scheduled Ship Date Not in Error	X					X	X				
Percentage of eInduction Containers Continuous		X				X		X			
Percentage of eInduction Containers Not Misshipped		X				X		X			
Percentage of eInduction Containers Released		X				X		X			
Percentage of eInduction Containers SV		X				X		X			
Percentage of eInduction Containers without Barcode eDoc Errors		X				X		X			
Percentage of eInduction Containers without Entry Point eDoc Errors		X				X		X			
Percentage of eInduction Containers without Manual Overrides		X				X		X			
Percentage of Entry Facility Not in Error			X			X			X		
Percentage of Full Service Mail Volume	X					X	X				
Percentage of Handling Unit Barcode Quality Not in Error				X		X				X	
Percentage of Handling Unit Barcode Uniqueness Not in Error	X					X	X				
Percentage of Handling Unit Mail Characteristic Not in Error				X		X				X	

Field Name	Mailer Scorecard					Job Level Drill					
	FS	EIN	SA	Manual	EPV	All	FS	EIN	SA	Manual	EPV
Percentage of Handling Unit MID Not in Error	X					X	X				
Percentage of Handling Unit Nesting/Sortation Not in Error				X		X				X	
Percentage of Matching eDoc and Appointment Entry Points					X	X					X
Percentage of MDF Match in Valid Date Range					X	X					X
Percentage of OCI Not in Error	X					X	X				
Percentage of Piece Barcode Quality Not in Error				X		X				X	
Percentage of Piece Barcode Uniqueness Not in Error	X					X	X				
Percentage of Piece Mail Characteristic Not in Error				X		X				X	
Percentage of Piece MID Not in Error	X					X	X				
Percentage of Piece Nesting/Sortation Not in Error				X		X				X	
Percentage of Piece Postage Not in Error				X		X				X	
Percentage of Piece Weight Not in Error				X		X				X	
Percentage of Presort Not in Error (Manual Sampling)			X			X			X		
Percentage of Presort Not in Error (MPE)			X			X			X		
Percentage of Seamless Acceptance Jobs Auto-Finalized			X								
Percentage of STID Not in Error	X					X	X				
Percentage of SV eInduction Containers Scanned and Accepted without Error		X				X		X			
Percentage of Valid eDoc Locale Key					X	X					X
Percentage of Valid eDoc Postal Code					X	X					X
Percentage of Valid MDF Match					X	X					X
Percentage of Volume Seamless Acceptance			X			X			X		
Piece Scan Rate			X			X			X		
Qualifies for Mail Anywhere Pay Anywhere?	X					X	X				

Field Name	Mailer Scorecard					Job Level Drill						
	FS	EIN	SA	Manual	EPV	All	FS	EIN	SA	Manual	EPV	
User License Code						X	X	X	X	X		X

1.2.3 Definitions and Source Map

- Definition - Describes attributes and how the metrics are calculated.
- Source Mapping - Identifies where data associated to an attributed or metric is sourced from.

Field Name	Definition	Data Source
Adjusted Piece Scan Rate	The total number of unique piece scans as a percentage of the total number of unique pieces associated to an eDoc excluding pieces whereby a scan is not expected based on mail class, processing category, rate category, or entry type facility.	Manual, MPE
Adjusted Postage of Sampled Pieces	The difference between original postage for samples and newly determined postage for samples as a result of errors logged during sampling verification of the job.	Manual
Auto-Finalization Indicator	Indicates if the job was auto-finalized.	eDoc Verification
Bypass Seamless Acceptance Indicator	Indicates if the job has been marked to bypass Seamless Acceptance Processing.	eDoc Verification
CRID Seamless Status	Indicates if the eDoc submitter CRID is enabled for Seamless Acceptance or Seamless Acceptance Parallel Processing.	eDoc Verification
Customer Group ID	The customer group ID of the job.	eDoc Verification
eDoc Submitter	The CRID and location of the eDoc Submitter.	eDoc Verification
Job ID	The Job ID submitted in the eDoc.	eDoc Verification
Mailing Date	Postage statement mailing date submitted in the eDoc.	eDoc Verification
Mailing Group ID	USPS assigned ID for the mailing submitted.	eDoc Verification
Number of Full-Service Orphan Handling Units	The number of orphan handling units that are full service.	eDoc Verification
Number of By/For Errors	The total number of full service piece By/For validation errors.	eDoc Verification
Number of By/For Matching Errors	The total number of full service piece By/For matching validation errors.	eDoc Verification
Number of Bypass Seamless Acceptance Jobs	The number of jobs submitted by a Seamless Acceptance eDoc submitter that have been marked to bypass Seamless Acceptance processing.	eDoc Verification
Number of Container Barcode Uniqueness Errors	The total number of full service container barcode uniqueness validation errors.	eDoc Verification
Number of Container CSA Errors	The total number of full service container customer service agreement (CSA) validation errors.	eDoc Verification
Number of Container Entry Facility Errors	The total number of full service container entry facility validation errors as a percentage of the total number of full service containers.	eDoc Verification

Field Name	Definition	Data Source
Number of Container MID Errors	The total number of full service container mailer ID (MID) validation errors.	eDoc Verification
Number of Containers	The total number of containers claimed in electronic documentation.	eDoc Verification
Number of Containers Sampled	The number of containers samples taken.	Manual
Number of DMU Verified USPS Transported Containers	The total number of full service containers that have an induction method of DMU verified USPS transported.	eDoc Verification
Number of Early Scheduled Ship Date Errors	The total number of full service DMU verified USPS transported containers that have been excluded from service measurement due to a scheduled ship date two or more days prior to the postage statement finalization date.	eDoc Verification
Number of Full Service Pieces	Used to calculate Percentage of Full Service Mail Volume.	eDoc Verification
Number of Full-Service Containers	The number of containers that are full service.	eDoc Verification
Number of Handling Unit Barcode Uniqueness Errors	The total number of full service handling unit barcode uniqueness validation errors.	eDoc Verification
Number of Handling Unit MID Errors	The total number of full service handling unit mailer ID (MID) validation errors.	eDoc Verification
Number of Handling Units	The total number of handling units claimed in electronic documentation.	eDoc Verification
Number of Handling Units Sampled	The number of handling unites samples taken.	Manual
Number of Mailer Transported eInduction Containers	The number of eInduction containers indicating the mailer transported induction method.	eInduction
Number of OCI Errors	The total number of full service handling unit original identification file (OCI) validation errors.	eDoc Verification
Number of Piece Barcode Uniqueness Errors	The total number of full service piece barcode uniqueness validation errors.	eDoc Verification
Number of Piece MID Errors	The total number of full service piece mailer identifier (MID) validation errors.	eDoc Verification
Number of Pieces	The total number of pieces claimed in electronic documentation.	eDoc Verification
Number of Pieces Sampled	The number of piece samples taken.	Manual
Number of PVDS eInduction Containers	The number of eInduction containers indicating the plant verified drop ship induction method.	eInduction
Number of Seamless Acceptance Containers	The number of containers marked for Seamless Acceptance processing.	eDoc Verification
Number of Seamless Acceptance Handling Units	The number of handling units marked for Seamless Acceptance processing.	eDoc Verification
Number of Seamless Acceptance Jobs	The number of jobs submitted by a Seamless Acceptance eDoc submitter.	eDoc Verification
Number of Seamless Acceptance Pieces	The number of pieces marked for Seamless Acceptance processing.	eDoc Verification
Number of STID Errors	The total number of full service piece service type identifier (STID) validation errors.	eDoc Verification
Number of USPS Transported eInduction Containers	The number of eInduction containers indicating the USPS transported induction method.	eInduction

Field Name	Definition	Data Source
Percentage of By/For Matching Not in Error	The total number of full service piece By/For matching validations not in error as a percentage of the total number of full service pieces.	eDoc Verification
Percentage of By/For Not in Error	The total number of full service piece By/For validations not in error as a percentage of the total number of full service pieces.	eDoc Verification
Percentage of COA Not in Error	The number of piece change of address (COA) validations not in error as a percentage of the number of Seamless Acceptance pieces.	eDoc Verification
Percentage of Container Barcode Quality Not in Error	The total number of container barcode quality validations not in error as a percentage of the total number of containers sampled.	Manual
Percentage of Container Barcode Uniqueness Not in Error	The total number of full service container barcode uniqueness validations not in error as a percentage of the total number of full service containers.	eDoc Verification
Percentage of Container CSA Not in Error	The total number of full service container customer service agreement (CSA) validations not in error as a percentage of the total number of full service containers.	eDoc Verification
Percentage of Container Entry Facility Not in Error	The percentage of full service containers that have not failed entry facility validations.	eDoc Verification
Percentage of Container Mail Characteristic Not in Error	The total number of container mail characteristic validations not in error as a percentage of the total number of containers sampled.	Manual
Percentage of Container MID Not In Error	The total number of full service container mailer ID (MID) validations not in error as a percentage of the total number of full service containers.	eDoc Verification
Percentage of Container Nesting/Sortation Not in Error	The total number of container nesting/sortation validations not in error as a percentage of the total number of containers sampled.	Manual
Percentage of Containers eInduction	The number of containers marked for eInduction in electronic documentation as a percentage of the total number of containers.	eInduction
Percentage of Documented Pieces	The number of seamless acceptance piece scans that could be associated to an eDoc as a percentage of the number of seamless acceptance pieces plus the number of piece scans that could not be associated to an eDoc.	Manual, MPE
Percentage of DPV Not in Error	The number of piece delivery point verification (DPV) validations not in error as a percentage of the number of Seamless Acceptance pieces.	eDoc Verification
Percentage of Early Scheduled Ship Date Not in Error	The percentage of full service detached mail unit (DMU) verified USPS transported containers that have not been excluded from service measurement due to a scheduled ship date two or more days prior to the postage statement finalization date.	eDoc Verification
Percentage of eInduction Containers Continuous	The number of eInduction containers that have a continuous mailer MID as a percentage of the total number of eInduction containers.	eInduction
Percentage of eInduction Containers Not Misshipped	The number of eInduction containers that have not been flagged as misshipped by SV as a percentage of the total number of eInduction containers.	eInduction

Field Name	Definition	Data Source
Percentage of eInduction Containers Released	The number of eInduction containers that were released to either SV or FAST as a percentage of the total number of eInduction containers.	eInduction
Percentage of eInduction Containers SV	The number of eInduction containers that are scheduled for induction into a SV site out of the total number of eInduction containers.	eInduction
Percentage of eInduction Containers without Barcode eDoc Errors	The number of eInduction containers that did not fail pre-induction barcode discount as a percentage of the total number of eInduction containers.	eInduction
Percentage of eInduction Containers without Entry Point eDoc Errors	The number of eInduction containers that did not fail pre-induction entry point discount as a percentage of the total number of eInduction containers.	eInduction
Percentage of eInduction Containers without Manual Overrides	The number of eInduction containers that did not fail pre-induction errors that were not manually overridden as a percentage of the total number of eInduction containers.	eInduction
Percentage of Entry Facility Not in Error	The number of container entry facility validations not in error as a percentage of the number of Seamless Acceptance containers.	eDoc Verification
Percentage of Full Service Mail Volume	The percentage of total pieces that are full service.	eDoc Verification
Percentage of Handling Unit Barcode Quality Not in Error	The total number of handling unit barcode quality validations not in error as a percentage of the total number of handling units sampled.	Manual
Percentage of Handling Unit Barcode Uniqueness Not in Error	The total number of full service handling unit barcode uniqueness validations not in error as a percentage of the total number of full service handling units.	eDoc Verification
Percentage of Handling Unit Mail Characteristic Not in Error	The total number of handling unit mail characteristic validations not in error as a percentage of the total number of handling units sampled.	Manual
Percentage of Handling Unit MID Not in Error	The total number of full service handling unit mailer ID (MID) validations not in error as a percentage of the total number full service handling units.	eDoc Verification
Percentage of Handling Unit Nesting/Sortation Not in Error	The total number of handling unit nesting/sortation validations not in error as a percentage of the total number of handling units sampled.	Manual
Percentage of Matching eDoc and Appointment Entry Points	The number of matching eDoc and Appointment Entry Points as a percentage of the total number of full service Containers and full service orphan handling units.	eDoc Verification
Percentage of MDF Match in Valid Date Range	The number of MDF match validations in valid date range as a percentage of the total number of full service Containers and full service orphan handling units.	eDoc Verification
Percentage of OCI Not in Error	The total number of full service handling unit original identification file (OCI) validations not in error as a percentage of the total number of full service handling units.	eDoc Verification
Percentage of Piece Barcode Quality Not in Error	The total number of piece barcode quality validations not in error as a percentage of the total number of pieces sampled.	Manual
Percentage of Piece Barcode Uniqueness Not in Error	The total number of full service piece barcode uniqueness validations not in error as a percentage of full service pieces.	eDoc Verification

Field Name	Definition	Data Source
Percentage of Piece Mail Characteristic Not in Error	The total number of piece mail characteristic validations not in error as a percentage of the total number of pieces sampled.	Manual
Percentage of Piece MID Not in Error	The total number of full service piece mailer ID (MID) validations not in error as a percentage of the total number of full service pieces.	eDoc Verification
Percentage of Piece Nesting/Sortation Not in Error	The total number of piece nesting/sortation validations not in error as a percentage of the total number of pieces sampled.	Manual
Percentage of Piece Postage Not in Error	The total number of piece postage validations not in error as a percentage of the total number of pieces sampled.	Manual
Percentage of Piece Weight Not in Error	The total number of piece weight validations not in error as a percentage of the total number of pieces sampled.	Manual
Percentage of Presort Not in Error (Manual Sampling)	The number of presort from manual sampling not in error as a percentage of the number of pieces sampled.	Manual
Percentage of Presort Not in Error (MPE)	The number of piece presort errors from census scanning as a percentage of the number of Seamless Acceptance pieces.	MPE, Manual
Percentage of Seamless Acceptance Jobs Auto-Finalized	The number of Seamless Acceptance jobs that were auto-finalized as a percentage of the number of Seamless Acceptance jobs.	eDoc Verification
Percentage of STID Not in Error	The total number of full service piece service type identifier (STID) validations not in error as a percentage of the total number of full service pieces.	eDoc Verification
Percentage of SV eInduction Containers Scanned and Accepted without Error	The number of eInduction containers that did not fail any pre-induction validations, were successfully released to and scanned by SV at induction, and did not fail any post-induction validations out of the total number of SV eInduction containers.	eInduction
Percentage of Valid eDoc Locale Key	The number of valid eDoc locale key validations as a percentage of the total number of full service Containers and full service orphan handling units.	eDoc Verification
Percentage of Valid eDoc Postal Code	The number of valid eDoc postal code validations as a percentage of the total number of full service Containers and full service orphan handling units.	eDoc Verification
Percentage of Valid MDF Match	The number of valid MDF match validations as a percentage of the total number of full service Containers and full service orphan handling units.	eDoc Verification
Percentage of Volume Seamless Acceptance	The number of pieces marked for Seamless Acceptance processing as a percentage of the total number of pieces claimed in eDocumentation.	eDoc Verification
Piece Scan Rate	The total number of unique piece scans as a percentage of the total number of unique pieces associated to an eDoc.	Manual, MPE
Qualifies for Mail Anywhere Pay Anywhere?	Indicates if the mailer qualifies for the Mail Anywhere Pay Anywhere program based on established thresholds.	eDoc Verification
User License Code	Unique ID provided by the IDEAlliance for each Mail.dat eDoc submitter.	eDoc Verification

1.2.4 Abbreviations and Terms

The Abbreviation and Term table provides the full name of abbreviations used throughout the Mailer Scorecard. Users can review the table to identify any unknown abbreviations.

Abbreviation	Term
COA	Change of Address
CSA	Customer Service Agreement
DMU	Detached Mail Unit
DPV	Delivery Point Verification
EPV	Entry Point Verification
FS	Full-Service
HU	Handling Unit
MAPA	Mail Anywhere Pay Anywhere
MDF	Mail Direction File
MID	Mailer Identifier
MPE	Mail Processing Equipment
OCI	Original Container Linkage
PAF	Postage Adjustment Factor
PVDS	Plant Verified Drop Shipment
STID	Service Type Identifier
SV	Surface Visibility

Figure 38 – Mailer Scorecard Abbreviations