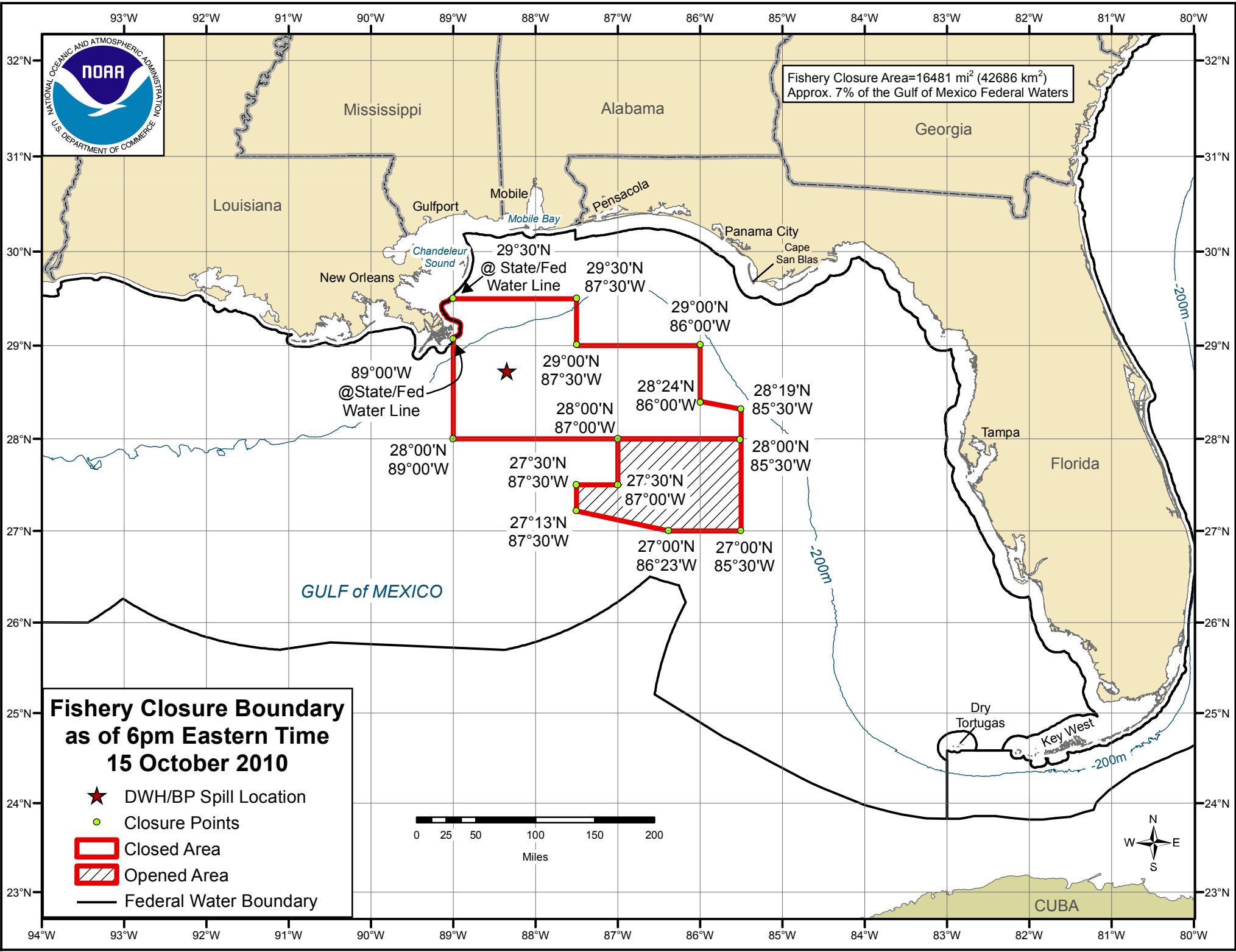


Fishery Closure Area=16481 mi² (42686 km²)
Approx. 7% of the Gulf of Mexico Federal Waters



Fishery Closure Boundary as of 6pm Eastern Time 15 October 2010

- ★ DWH/BP Spill Location
- Closure Points
- ▭ Closed Area
- ▨ Opened Area
- Federal Water Boundary



GULF of MEXICO

29°30'N 87°30'W
29°00'N 86°00'W
28°24'N 86°00'W
28°19'N 85°30'W
28°00'N 85°30'W
28°00'N 87°00'W
28°00'N 89°00'W
27°30'N 87°30'W
27°30'N 87°00'W
27°13'N 87°30'W
27°00'N 86°23'W
27°00'N 85°30'W

29°30'N @ State/Fed Water Line
29°00'N @ State/Fed Water Line

