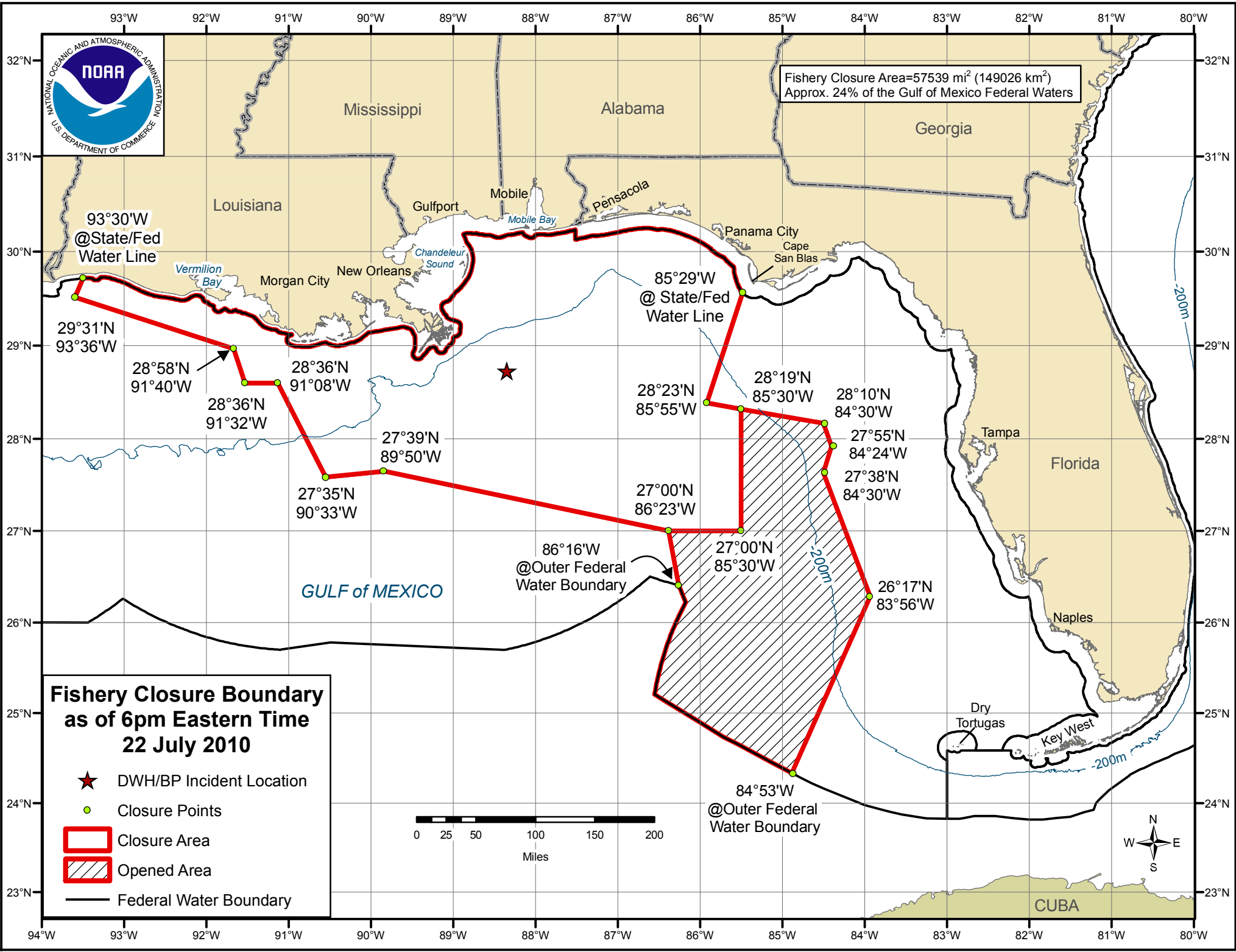


Fishery Closure Area=57539 mi² (149026 km²)
Approx. 24% of the Gulf of Mexico Federal Waters



Fishery Closure Boundary as of 6pm Eastern Time 22 July 2010

- ★ DWH/BP Incident Location
- Closure Points
- ▭ Closure Area
- ▨ Opened Area
- Federal Water Boundary



GULF of MEXICO

86°16'W
@Outer Federal
Water Boundary

84°53'W
@Outer Federal
Water Boundary

93°30'W
@State/Fed
Water Line

85°29'W
@ State/Fed
Water Line

28°58'N
91°40'W

28°36'N
91°32'W

28°36'N
91°08'W

27°35'N
90°33'W

27°39'N
89°50'W

27°00'N
86°23'W

27°00'N
85°30'W

28°23'N
85°55'W

28°19'N
85°30'W

28°10'N
84°30'W

27°55'N
84°24'W

27°38'N
84°30'W

26°17'N
83°56'W

-200m

-200m

-200m