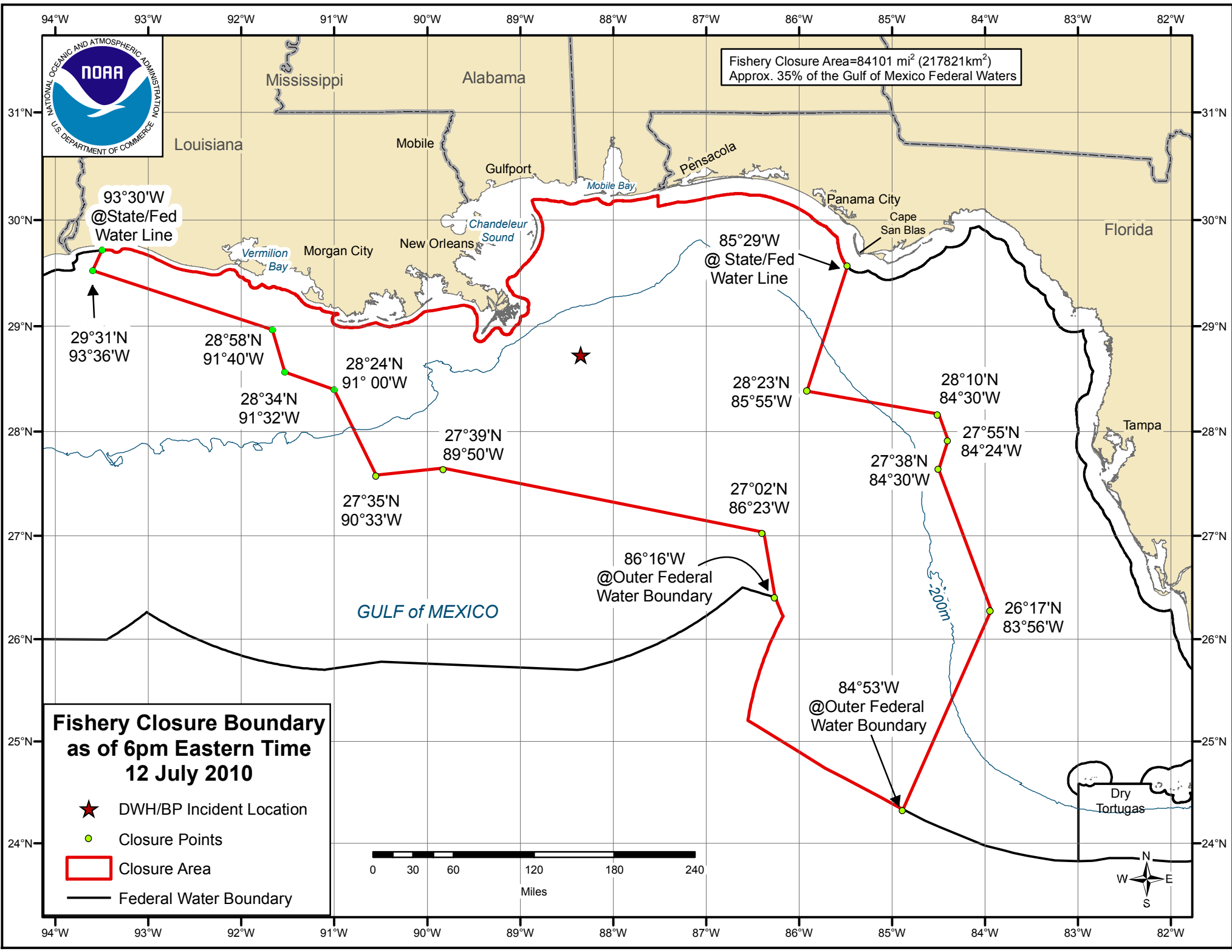
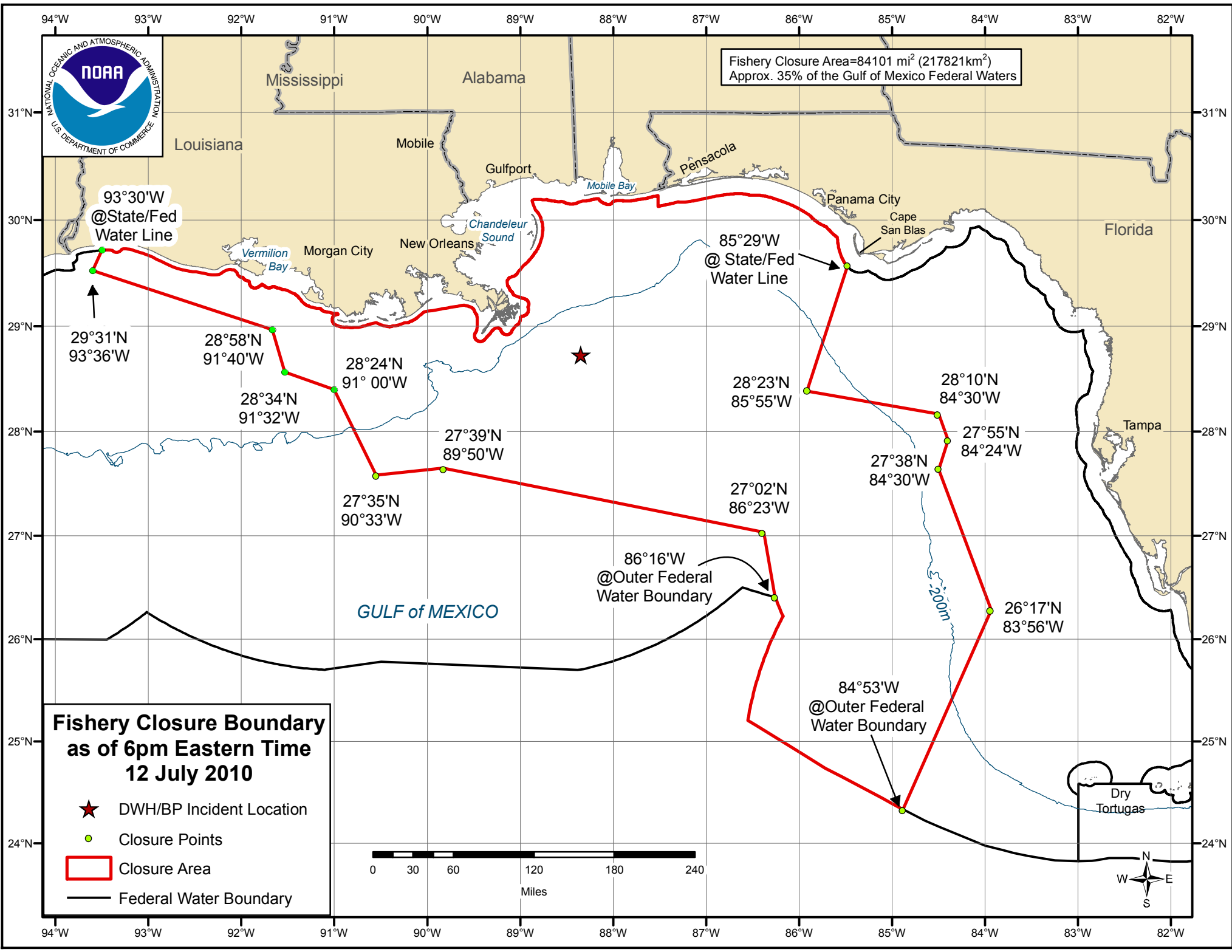
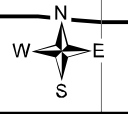
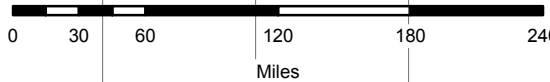


Fishery Closure Area=84101 mi² (217821km²)
Approx. 35% of the Gulf of Mexico Federal Waters



Fishery Closure Boundary as of 6pm Eastern Time 12 July 2010

- ★ DWH/BP Incident Location
- Closure Points
- ▭ Closure Area
- Federal Water Boundary



93°30'W
@State/Fed
Water Line

29°31'N
93°36'W

28°58'N
91°40'W

28°34'N
91°32'W

28°24'N
91°00'W

27°39'N
89°50'W

27°35'N
90°33'W

85°29'W
@State/Fed
Water Line

28°23'N
85°55'W

28°10'N
84°30'W

27°55'N
84°24'W

27°38'N
84°30'W

27°02'N
86°23'W

86°16'W
@Outer Federal
Water Boundary

84°53'W
@Outer Federal
Water Boundary

26°17'N
83°56'W

Dry
Tortugas