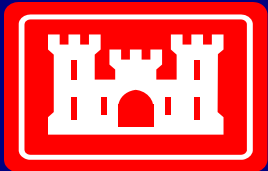




Federal Remediation Technologies Roundtable

Source Removal of VOC Contaminants in Bedrock

Letterkenny Army Depot
Chambersburg, Pennsylvania



US Army Corps
of Engineers
Baltimore District

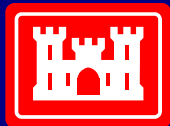




**US Army Corps
of Engineers**
Baltimore District

Special Thanks

- **Drew Clemmons (CENAB)**
- **Riadh Hossian (CENAB)**
- **Paul Landry & Ken Cowan (Weston)**
- **Corinne Shia and Wayne Stoner**
- **Jay Holley, Eric Powers, Jason Prosser**
- **Mike West**
- **Ed Kellar**
- **Mark Tucker**



**US Army Corps
of Engineers**
Baltimore District

Site Information and Background/Pilots

- **LEAD has Two (2) NPL sites**
- **SE (Southeast Area)**
- **PDO (Property Disposal Office Area)**

- **SE OU 3A DA Pilot Study - In-Situ Chemical Oxidation (Fenton's). SE OU 3A Currently in PP Stage**



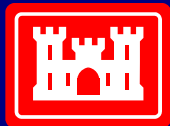
**US Army Corps
of Engineers**
Baltimore District

SE Pilots (cont)

- **SE OU 11 In-Situ – Peroxone Pilot Study (Lagoon Area) Currently in PP Stage**

**SE OUs 3A and 11 discharge to SE OU Six
(Offpost groundwater) PP**

- **SE OU 10 SSIA Contaminated Groundwater (VOCs and BTEX); Enhanced Bio Currently in RAO**



**US Army Corps
of Engineers**
Baltimore District

SE OU 3A, 10 & 11 Site History

- **Sources of Volatile Organic Compounds (VOCs) contamination in SE 11: former leaking industrial wastewater sewers, former Industrial Waste Treatment Plant (IWTP) lagoons .**
- **Sources of VOC contamination in Disposal Area (DA): former waste solvent disposal lagoons (Area K-1), and spill area (Area A).**
- **VOC contamination in SE OU 10 leaking industrial wastewater sewers**



US Army Corps
of Engineers
Baltimore District

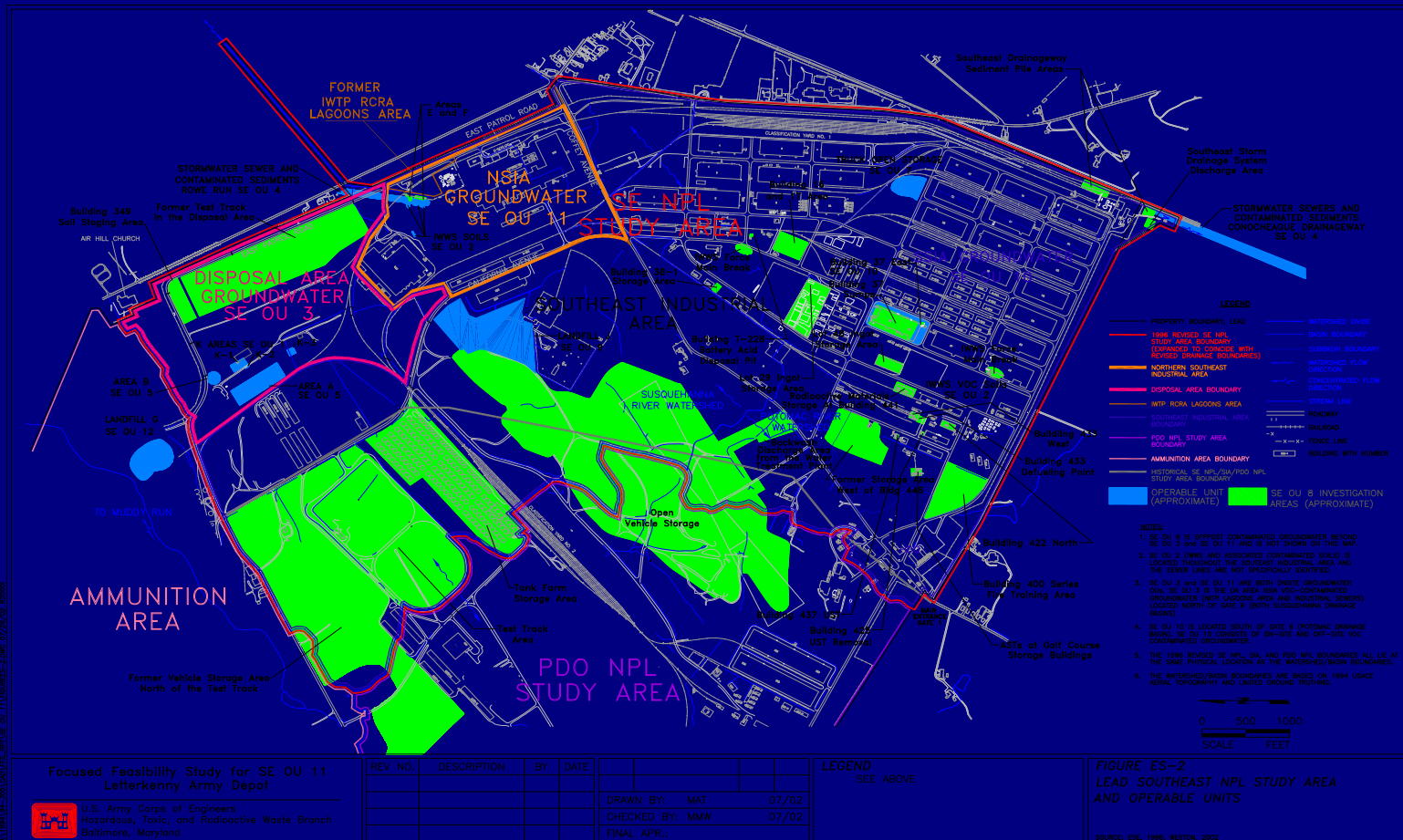
Oxidizer Strength

● Substance	Volts	ISCO
● Fluorine	3.0	No
● Hydroxyl Radical	2.8	Yes
● Ozone	2.1	Yes
● H ₂ O ₂	1.8	Yes
● 2 KMnO ₄	1.7	Yes



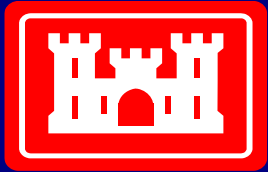
US Army Corps
of Engineers
Baltimore District

Study Areas



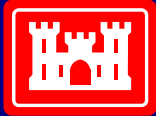


In Situ Chemical Oxidation Pilot Study of a DNAPL Source Area Within the SE OU 3A Karst Bedrock Aquifer



US Army Corps
of Engineers
Baltimore District





US Army Corps
of Engineers
Baltimore District

K-1 Area Site History

- Former waste solvent disposal lagoon (10^6 gallons)
- Source removal no effect on groundwater quality treated using LT^3
- VOC-impacted groundwater sources/plume delineated in DA

Geology

- St. Paul formation (ordovician limestone)
- Karst features present (solutioning)

Hydrogeology

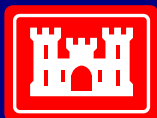
- Generally high flow/permeability 20+ gpm yields
- Water table ranges from ~5 ft. to >30 ft. bgs



US Army Corps
of Engineers
Baltimore District

Characterization of Source Area

- **Review historical groundwater data, dye study data, and pumping test results**
- **Bench-scale study**
 - Evaluate reactivity between limestone bedrock and acidic injection fluids
 - Determine optimal mixture of injection fluids for most effective VOC reductions
- **Conduct baseline groundwater sampling**
- **Geophysical logging/downhole video**
- **Packer Testing**



US Army Corps
of Engineers
Baltimore District

Bench Study Results

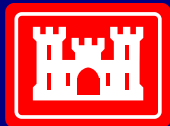
- pH of injection fluid (3) not effected by dissolved carbonates in groundwater
- Any reaction with bedrock was over within 2 hours.
- Bedrock surface covered with precipated iron which protected rock surface.
- No reaction between bedrock and H_2O_2
- Change of injection fluid pH (from 3 to 5) had no noticable effect on OH. Generation



US Army Corps
of Engineers
Baltimore District

Bench Study Results (cont)

- Oxidation efficiency was only mildly influenced by hydrogen peroxide concentration.
- 50% hydrogen peroxide solution resulted in a slightly lower oxidation efficiency relative to 25%, 12.5%, and 6.25% solutions.
- Most likely due to vigorous iron oxidation and precipitation in the 50% solution experiments.



US Army Corps
of Engineers
Baltimore District

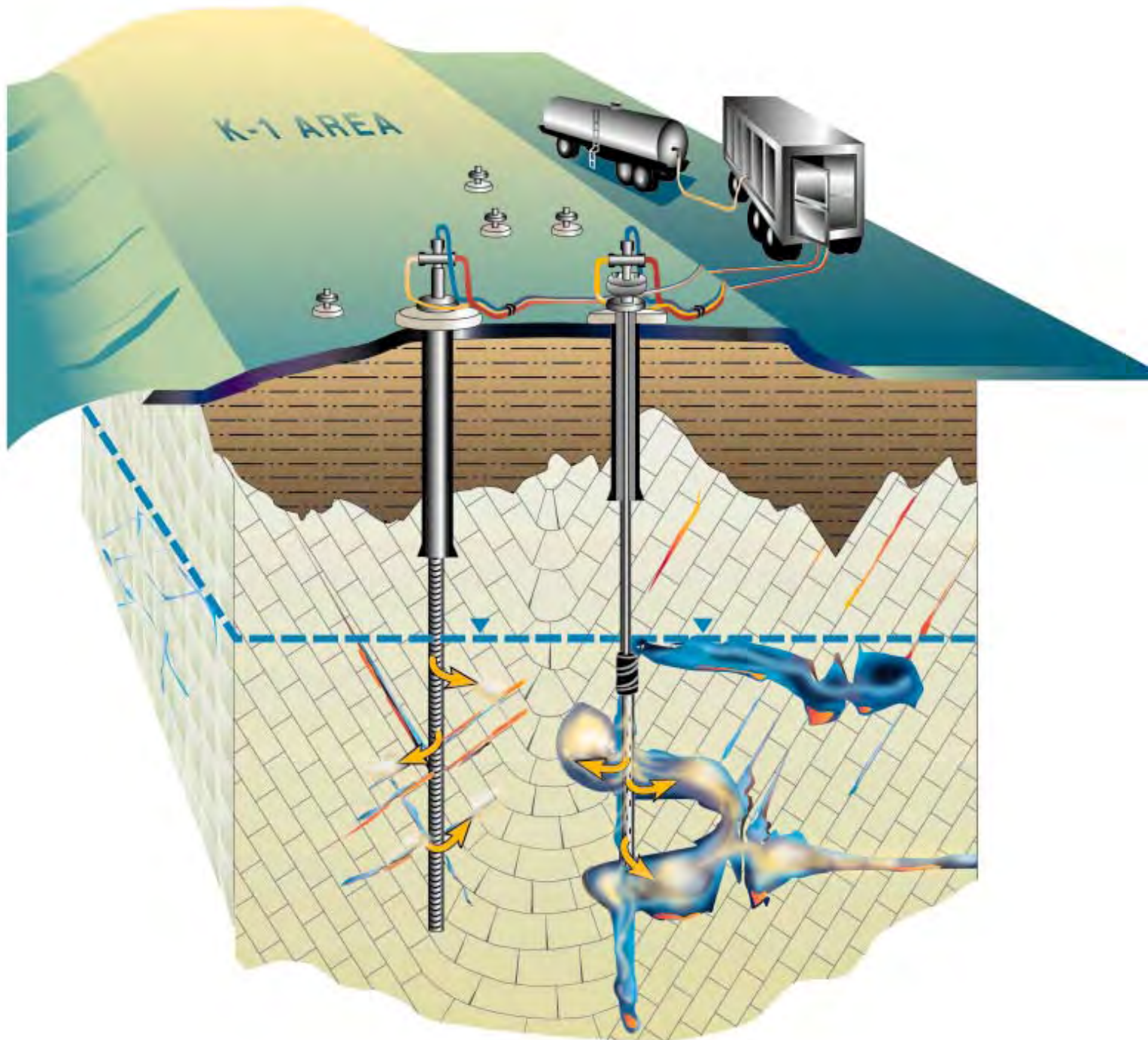
Groundwater Contamination Summary

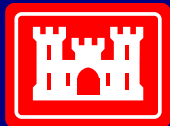
- **VOC-impacted groundwater plume contains over 94% Chlorinated VOCs**
- **Chlorinated VOCs consist mainly of 1,2-DCE (61%), TCE (20%), Vinyl Chloride (10.5%), and PCE (3%)**
- **Maximum Total and Chlorinated VOCs = 114, 242 $\mu\text{g/L}$ (PW-6)**





**US Army Corps
of Engineers**
Baltimore District





US Army Corps
of Engineers
Baltimore District

K-1 Area - Pilot Study Objectives

- **Determine effectiveness in Karst setting**
 - Reactivity of injection fluids with limestone
 - Success in high flow conditions
 - Ability to achieve proper pH
- **Determine if reductions can be maintained**
- **Determine if organic and inorganic COCs mobilized**



US Army Corps
of Engineers
Baltimore District

Injection Approach

- **Inject from upgradient edge and along bedrock strike**
- **Use both fixed injectors and movable packer sealed injectors**
- **Monitor multiple water-producing zones individually during injection**
- **Collect pre- and post-injection groundwater samples**

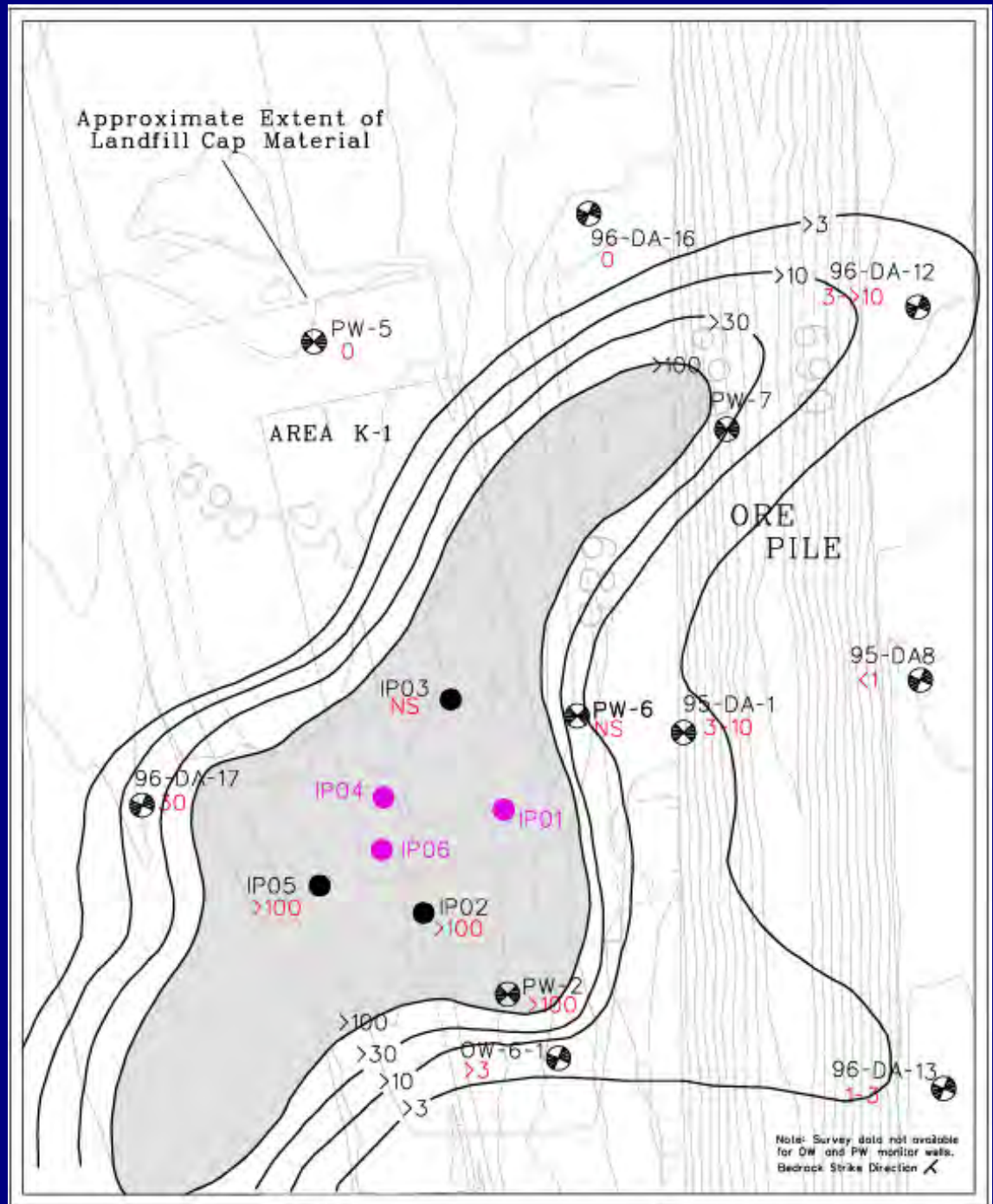


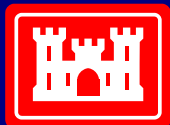
US Army Corps
of Engineers
Baltimore District

H₂O₂ Distribution Round 7 (03:40-09:50)

Legend

- == Roads
- Injection/Monitor Well
- 95-DA-1 Monitor Well
- Injection Point





US Army Corps
of Engineers
Baltimore District

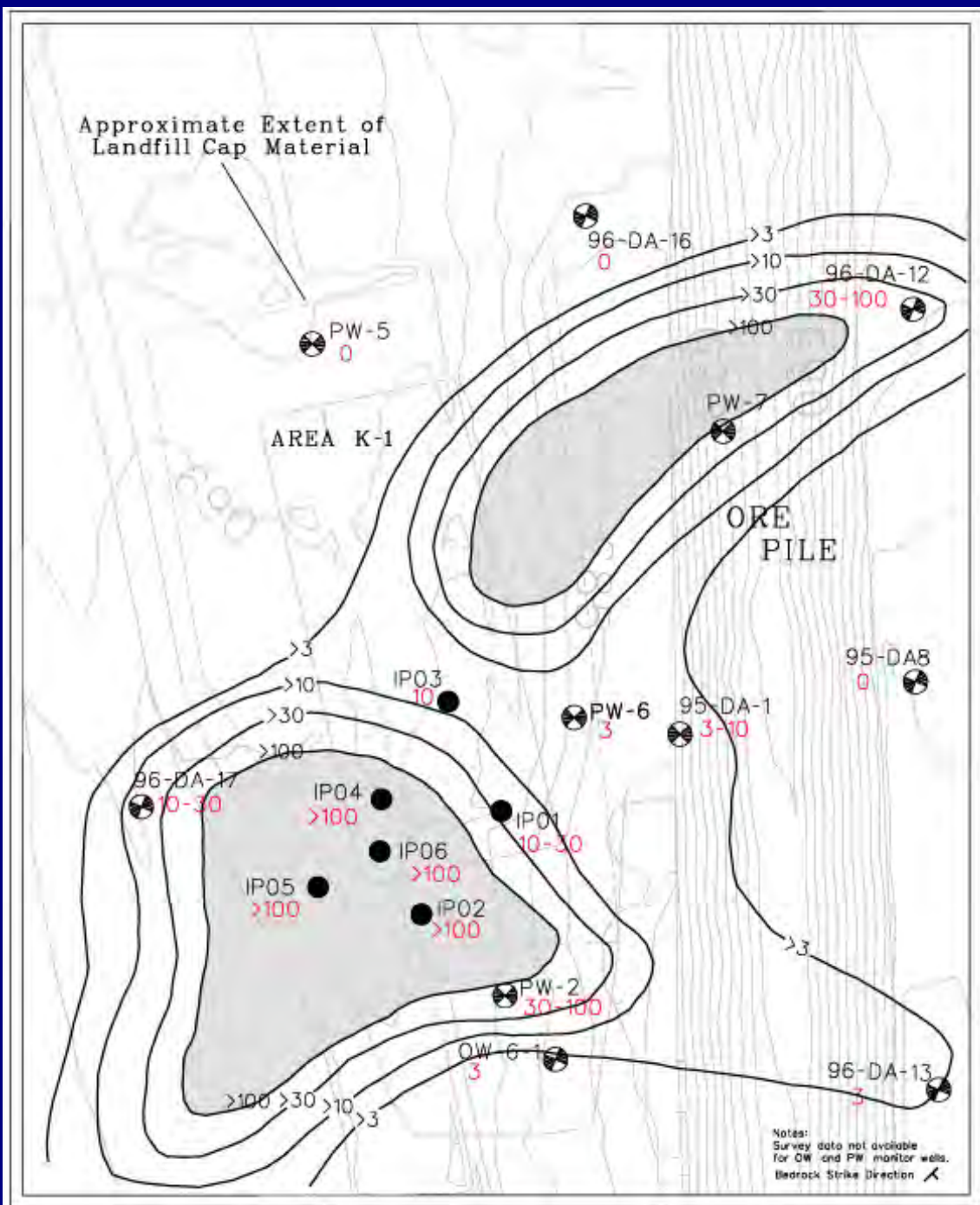
H₂O₂ Distribution Round 9 (24 Hours Following Shutdown)

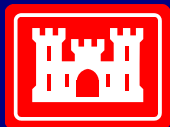
Legend

== Roads

● Injection/Monitor Well

95-DA-1
⊕ Monitor Well



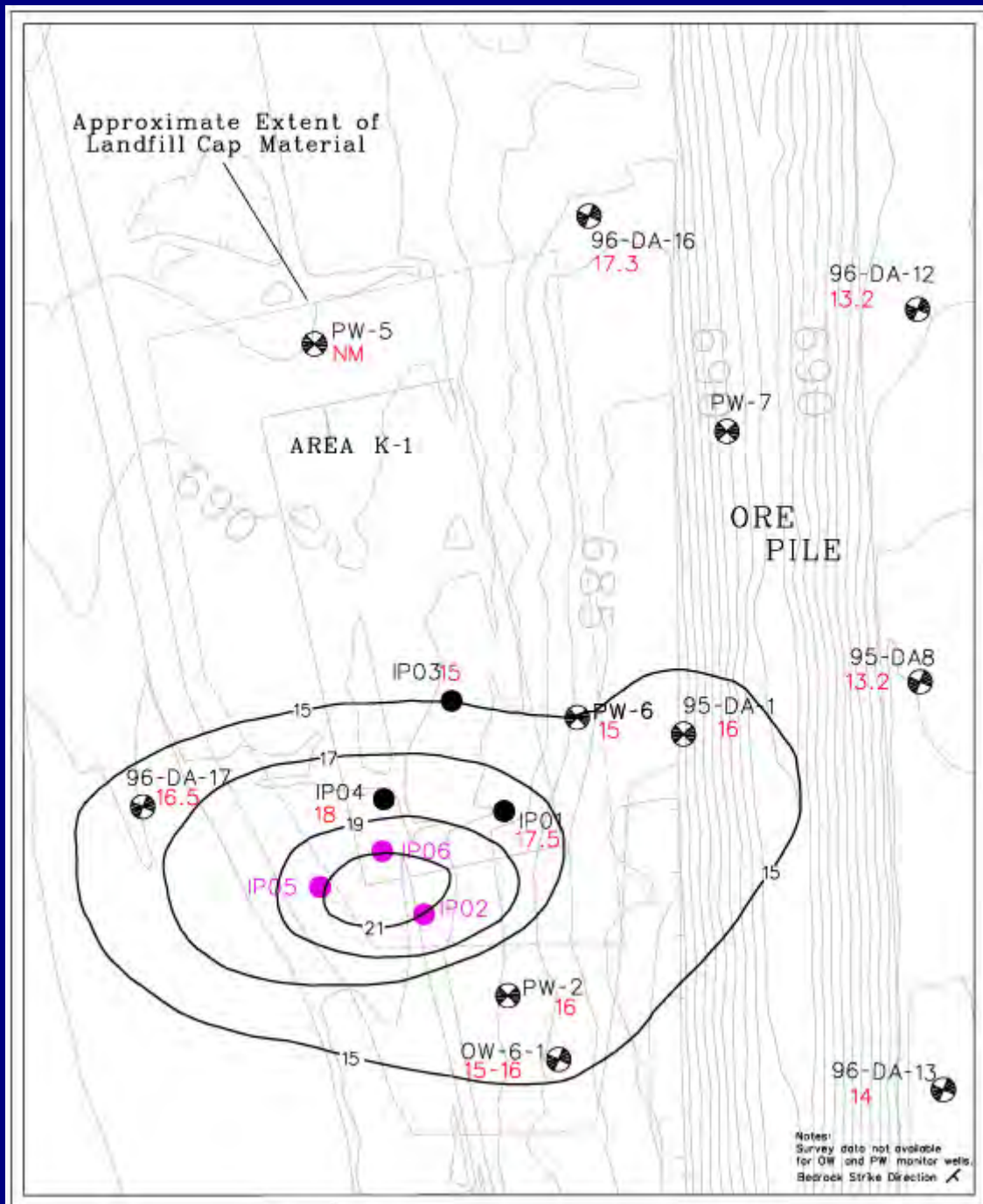


US Army Corps
of Engineers
Baltimore District

Temperature (°C) Baseline

Legend

- == Roads
- Injection/Monitor Well
- 95-DA-1 ● Monitor Well
- Injection Point



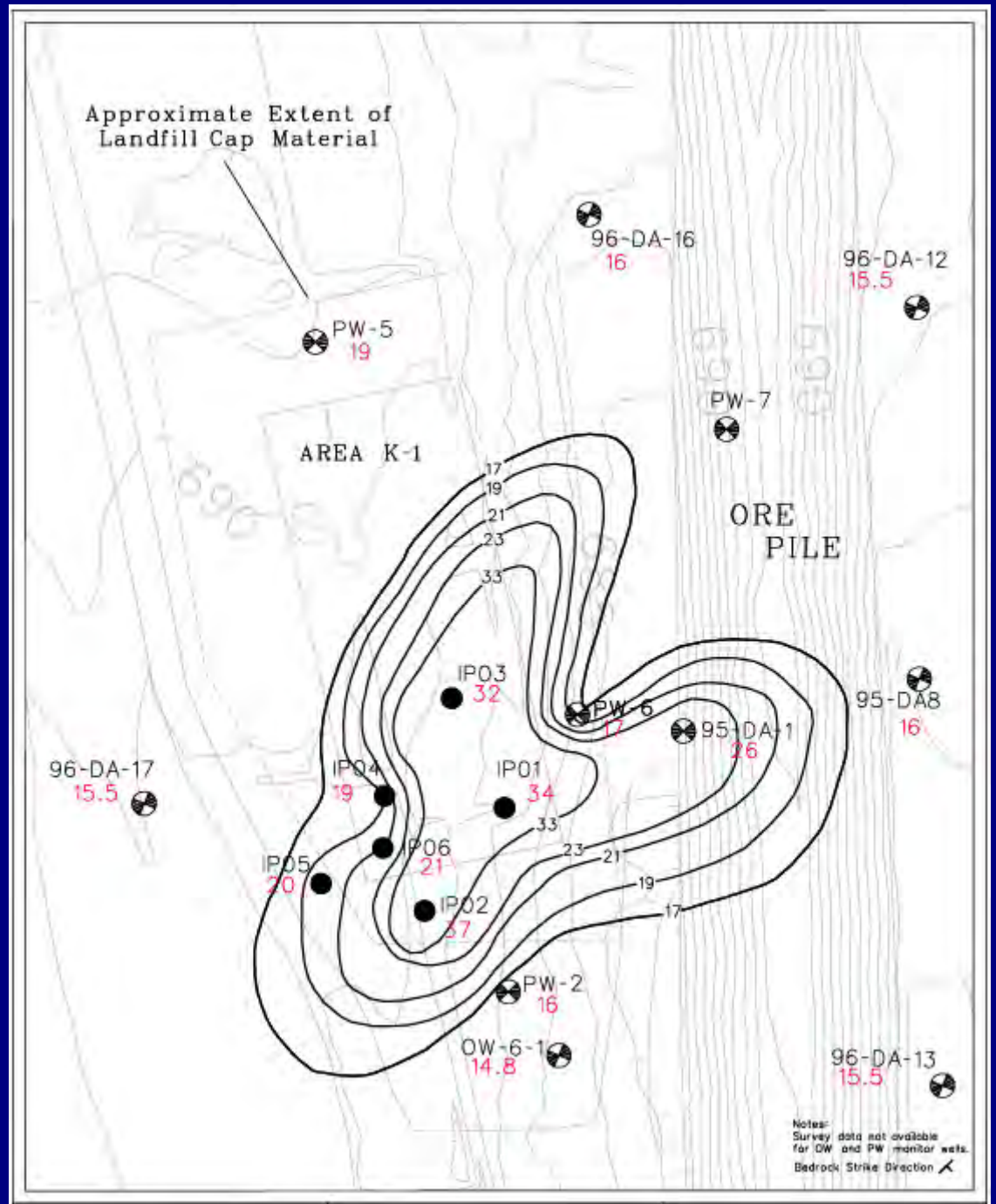


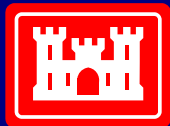
**US Army Corps
of Engineers**
Baltimore District

Temperature ($^{\circ}\text{C}$) Round 8 (4 Hours Following Shutdown)

Legend

- == Roads
- Injection/Monitor Well
- 95-DA-1 Monitor Well
- Injection Point

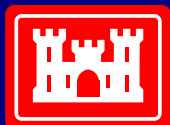




US Army Corps
of Engineers
Baltimore District

Pilot Study Operation Summary

- **Operated 24 hrs/day for 3.5 days**
- **Injected 12,700 gallons H₂O₂ (50%)**
- **Injected 36,000 gallons catalysts**
- **Collected 7 field monitoring rounds**



US Army Corps
of Engineers
Baltimore District

Chlorinated VOCs ($\mu\text{g}/\text{L}$) Baseline Sampling Round

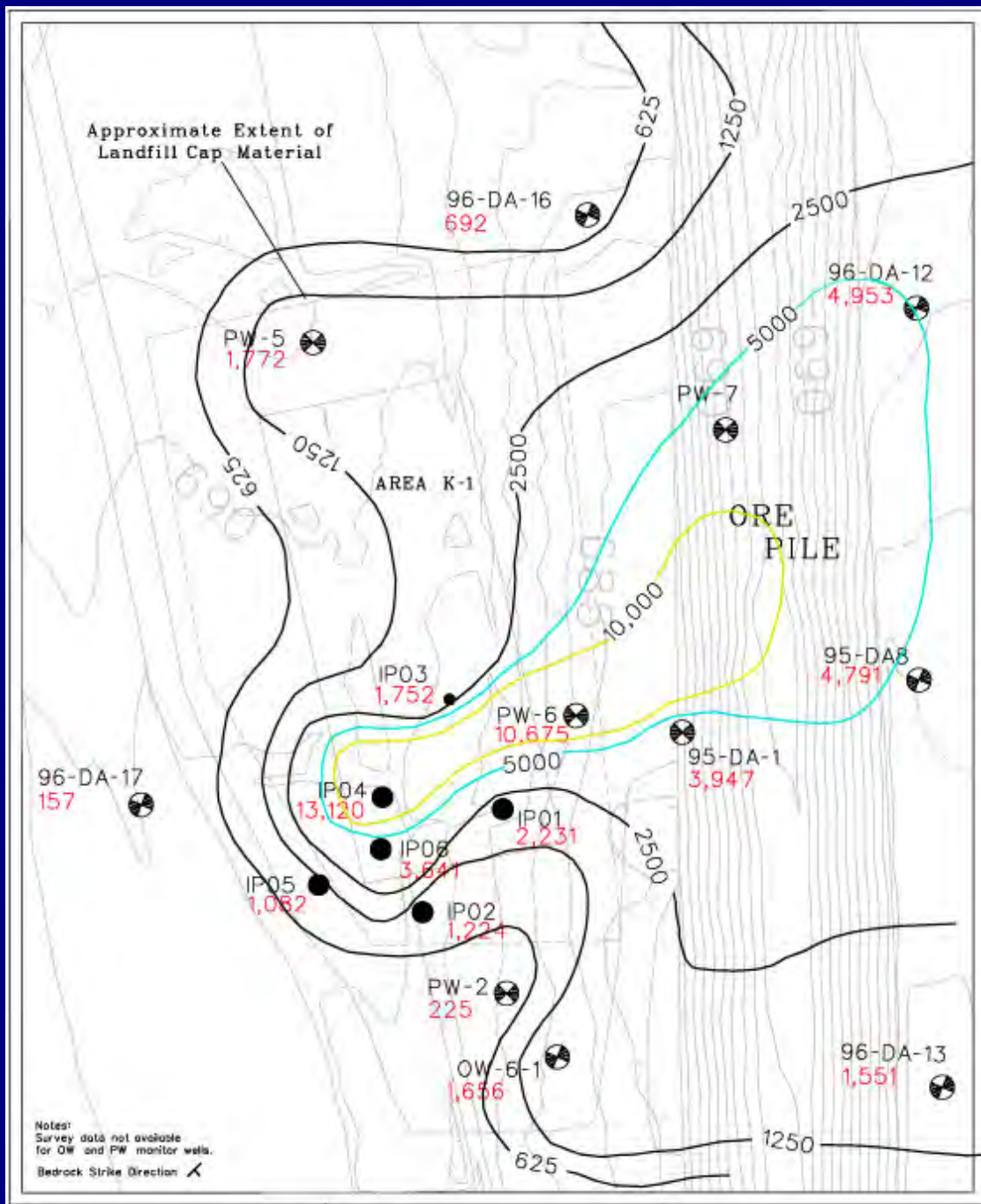
Legend

== Roads

95-DA-1 Monitor Points

● Injection/Monitor Well

⊕ Monitor Well





US Army Corps
of Engineers
Baltimore District

Chlorinated VOCs ($\mu\text{g/L}$) Post 1 Sampling Round

Legend

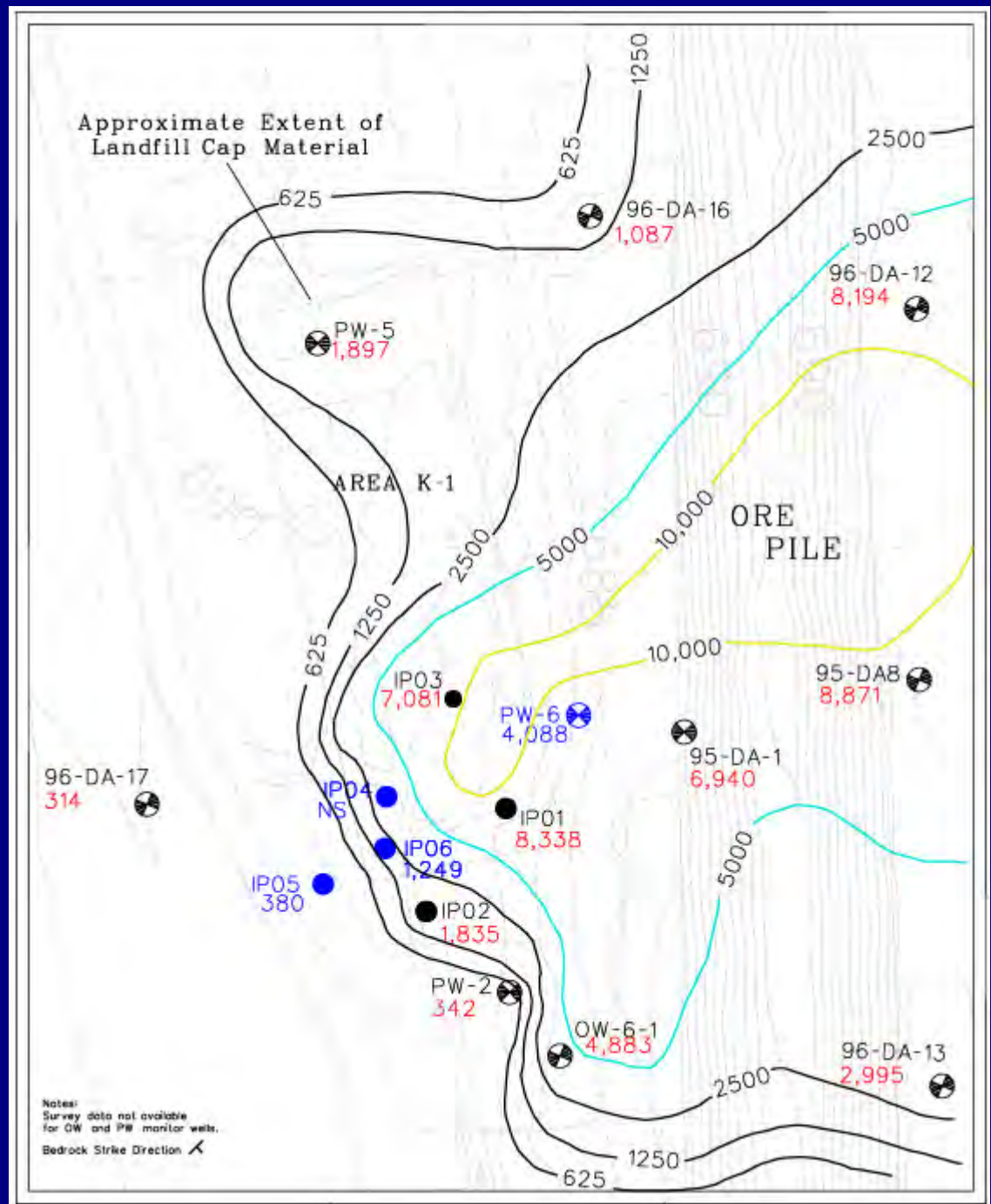
== Roads

95-DA-1 Monitor Points

● Injection/Monitor Well

⊕ Monitor Well

● VOC Levels Reduced From Baseline





US Army Corps
of Engineers
Baltimore District

Chlorinated VOCs (ug/L) Post 4 Sampling Round (9 Months)

Legend

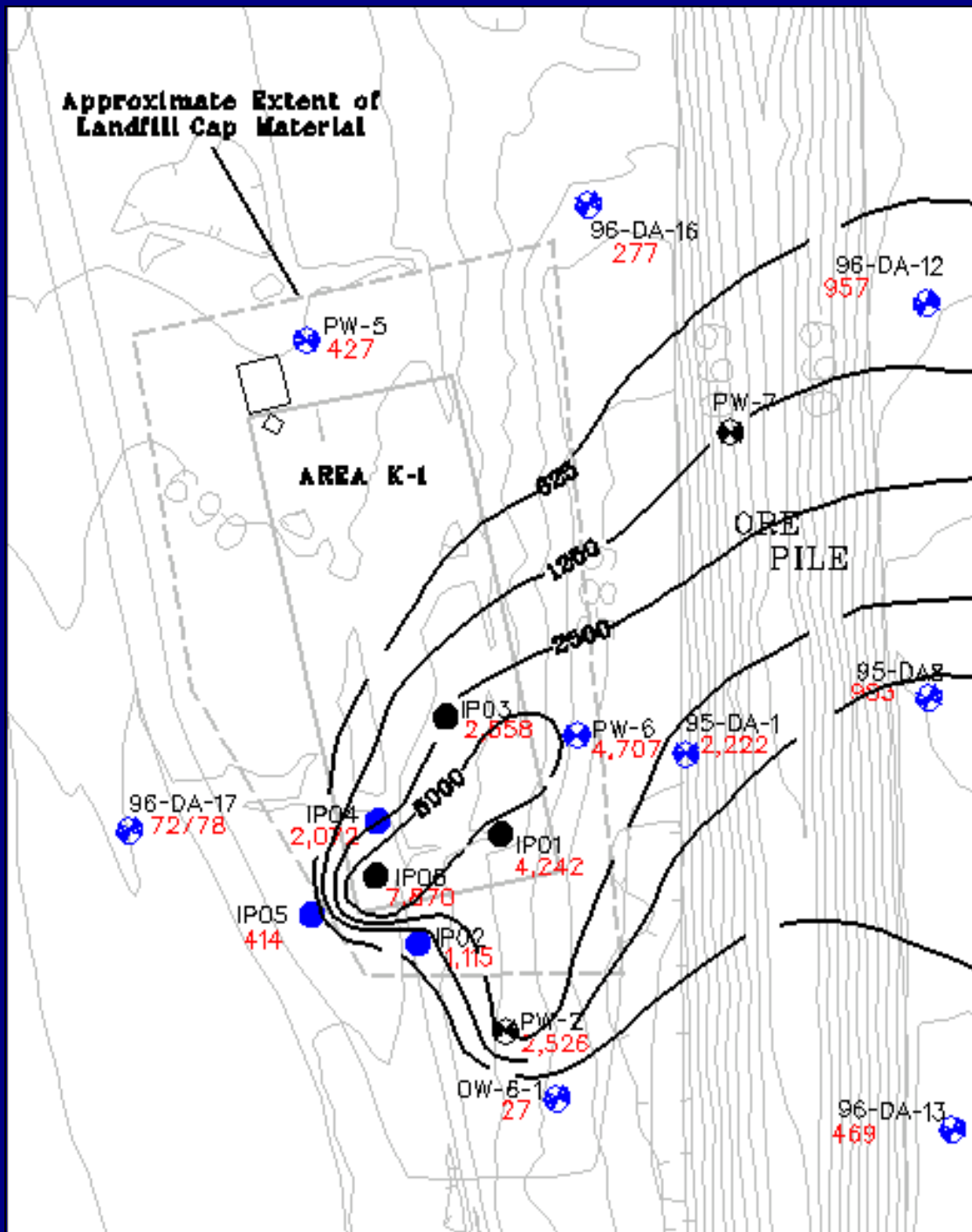
== Roads

95-DA-1 Monitor Points

● Injection/Monitor Well

⊕ Monitor Well

● VOC Levels Reduced From Baseline





US Army Corps
of Engineers
Baltimore District

Summary of Key Findings

- Both injector designs are effective
- Chemical oxidants effectively delivered
- Destruction ratio of 7:1 predicted during initial stages (12,519 lbs H_2O_2 to 1,942 lbs VOCs destroyed)
- Reduction maintained along upgradient edge
- Organics were mobilized
- Limestone bedrock not measureably degraded

In Situ Chemical Oxidation Pilot Test in a Karst Aquifer Southeast Operable Unit 11 IWTP Lagoons



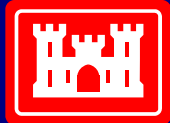
US Army Corps
of Engineers
Baltimore District



US Army Corps
of Engineers
Baltimore District

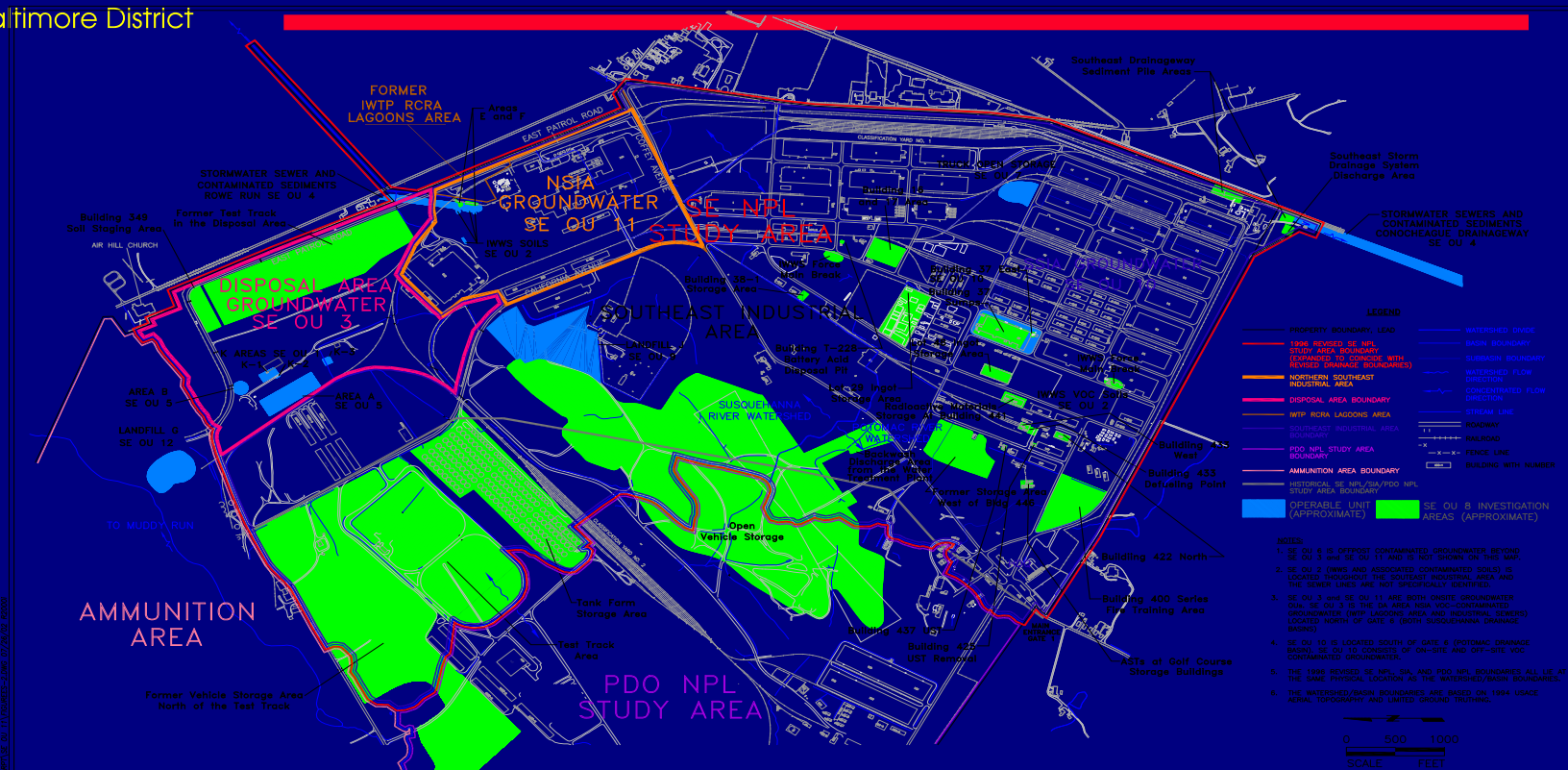
Letterkenny Army Depot Chambersburg, Pennsylvania

Performed by:
**Science Applications International Corporation
(SAIC)**



Site Map

US Army Corps
of Engineers
Baltimore District



- LEGEND**
- PROPERTY BOUNDARY, LEAD
 - 1996 REVISED SE NPL STUDY AREA BOUNDARY (EXPANDED TO COINCIDE WITH PROPERTY BOUNDARIES)
 - NORTHERN SOUTHEAST INDUSTRIAL AREA
 - DISPOSAL AREA BOUNDARY
 - WWF FROM LAGOONS AREA
 - SOUTHEAST INDUSTRIAL AREA BOUNDARY
 - PDO NPL STUDY AREA BOUNDARY
 - AMMUNITION AREA BOUNDARY
 - HISTORICAL SE NPL/SA/PDO NPL STUDY AREA BOUNDARY
 - OPERABLE UNIT (APPROXIMATE)
 - SE OU B INVESTIGATION AREAS (APPROXIMATE)
 - WATERSHED DRAINAGE
 - BASIN BOUNDARY
 - SUBBASIN BOUNDARY
 - WATERSHED FLOW DIRECTION
 - CONCENTRATED FLOW DIRECTION
 - STREAM LINE
 - ROADWAY
 - AIRLADDER
 - FENCE LINE
 - BUILDING WITH NUMBER

- NOTES**
- SE OU 8 IS OFF-SITE CONTAMINATED GROUNDWATER BEYOND SE OU 3 AND SE OU 11 AND IS NOT SHOWN ON THIS MAP.
 - SE OU 2 (BURN AND ASSOCIATED CONTAMINATED SOILS) IS LOCATED THROUGHOUT THE SOUTHEAST INDUSTRIAL AREA AND THE SENECA LINES (ARE NOT SPECIFICALLY IDENTIFIED).
 - SE OU 3 AND SE OU 11 ARE BOTH ON-SITE GROUNDWATER OUA. SE OU 3 IS THE SA AREA NSFA VOC-CONTAMINATED GROUNDWATER (WITH LAGOONS AREA AND INDUSTRIAL SOURCE) LOCATED NORTH OF GATE 8 (BOTH SUSQUEHANNA DRAINAGE BASIN).
 - SE OU 10 IS LOCATED SOUTH OF GATE 8 (POTIOMAC DRAINAGE BASIN). SE OU 10 CONSISTS OF ON-SITE AND OFF-SITE VOC CONTAMINATED GROUNDWATER.
 - THE 1996 REVISED SE NPL, SA, AND PDO NPL BOUNDARIES ALL LIE AT THE SAME PHYSICAL LOCATION AS THE WATERSHED/BASIN BOUNDARIES.
 - THE WATERSHED/BASIN BOUNDARIES ARE BASED ON 1984 USACE AERIAL PHOTOGRAPHY AND LIMITED GROUND TRUTHING.



Focused Feasibility Study for SE OU 11
Latterkenny Army Depot

REV. NO.	DESCRIPTION	BY	DATE

LEGEND
SEE ABOVE

DRAWN BY:	MAT	07/02
CHECKED BY:	MMW	07/02
FINAL APPR.:		

FIGURE ES-2
LEAD SOUTHEAST NPL STUDY AREA
AND OPERABLE UNITS

SOURCE: ESC, 1998; WESTON, 2002

U.S. Army Corps of Engineers
Hazardous, Toxic, and Radioactive Waste Branch
Baltimore, Maryland



**US Army Corps
of Engineers**
Baltimore District

Site History

- **Industrial Wastewater Treatment Lagoons (IWTP)**
 - Lagoon constructed in 1954 and operated until 1967, when sinkhole opened under lagoon. Two new reinforced concrete lagoons constructed and operated until 1988.
- **Groundwater contamination is the result of uncontrolled release of wastewater containing solvents and other industrial residuals.**
- **200 gpm Pump and treat no effect**
- **Soils removal no effect**



1967 Air Photo



US Army Corps
of Engineers
Baltimore District

Excavation of Lagoons





US Army Corps
of Engineers
Baltimore District

Environmental Setting

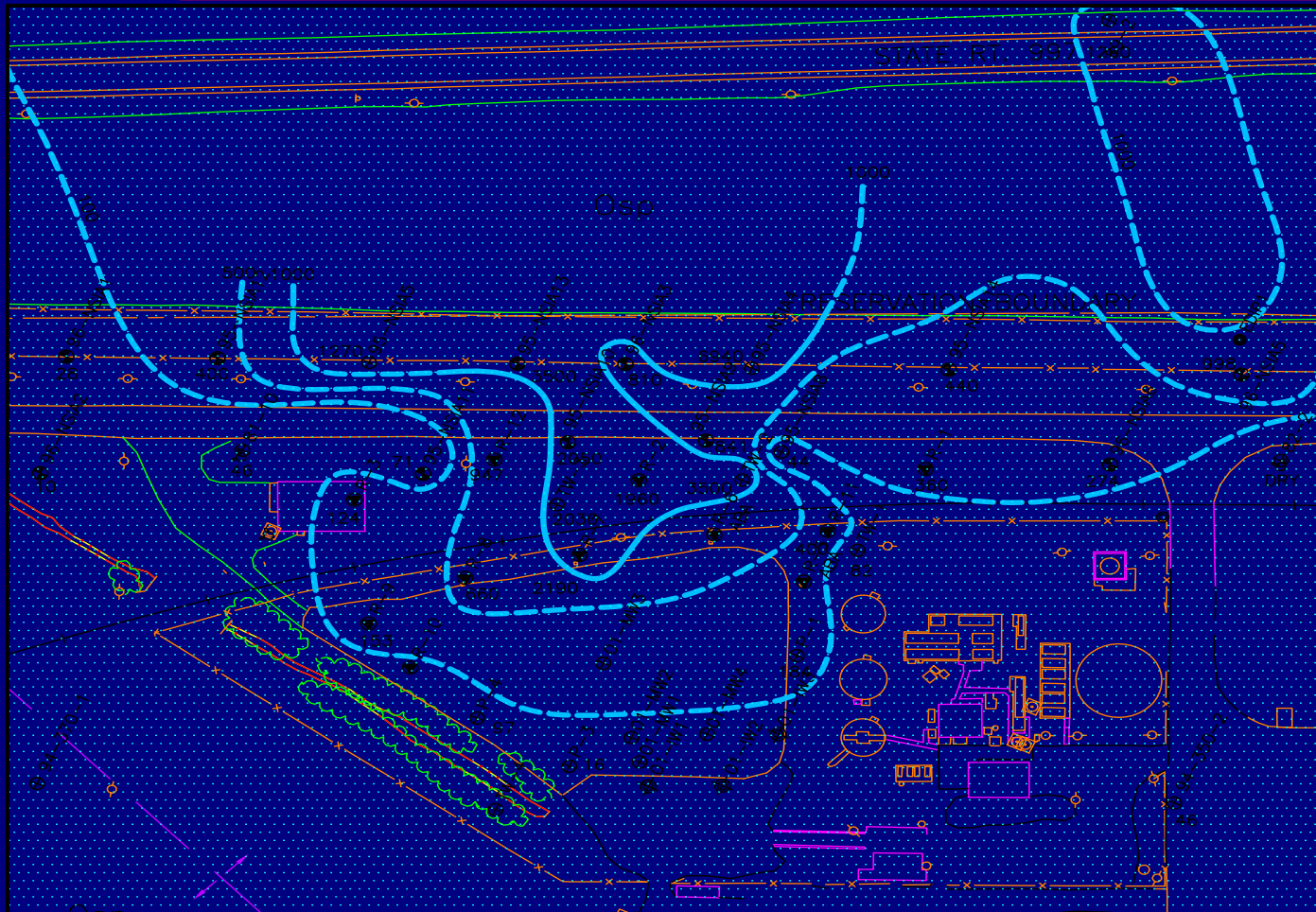
Hydrogeology

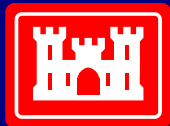
- **Water table averages 30 ft. bgs, with storm event and seasonal fluctuations**
- **Regional groundwater gradient to the east**
- **Groundwater crosses NE boundary, discharging at springs 2 miles offpost**
- **Epikarst zone – Top 75 feet of aquifer .**
- **Below 100 feet, decreasing fractures and voids**



US Army Corps
of Engineers
Baltimore District

Total VOCs – Iso- concentration Map





US Army Corps
of Engineers
Baltimore District

Conceptual Site Model – OU 11

- **Epikarst - Highly karstified (top 100'), with sediment-filled & open voids in fractured limestone bedrock.**
- **Fractured Bedrock - Preferential flow along bedding planes.**
- **Release of DNAPL from lagoon through sink hole**
- **Contaminant source (DNAPL) resides in fractures, mud-filled seams, and is smeared on rock surface.**
- **DNAPL dissolves in groundwater, migrates with groundwater, offsite, rapidly discharging to off post springs. Frequent flushing by precipitation events.**



US Army Corps
of Engineers
Baltimore District

Peroxone Oxidant

- $\text{H}_2\text{O}_2 + 2\text{O}_3 \rightarrow 2\cdot\text{OH} + 3\text{O}_2$
- Off-post flushing little concern
- New ozone generation technology
- Super-saturated solution increases O_3 concentration
- Pilot applicable to other oxidants





US Army Corps
of Engineers
Baltimore District

Pilot Test Goals

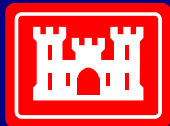
- **Determine ability to displace aquifer water with oxidant solution**
- **Determine ability to deliver/sustain oxidant in the target zone**
- **Test the generator and delivery system**
- **Collect design information for construction of full-scale system.**



US Army Corps
of Engineers
Baltimore District

Pilot Test Steps

- **Design of injection, delivery and monitoring systems**
- **Install injection/monitoring wells**
- **Determine background chemical constituent concentrations**
- **Perform dye injection**
- **Conduct Peroxone injection**

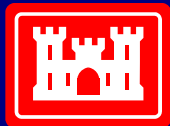


US Army Corps
of Engineers
Baltimore District

Design of Injection, Delivery and Monitoring System

- **Estimate from available data:**
 - Porosity/pore volume
 - Injected solution flow direction
 - Area of influence (target zone)
 - Reasonable injection rate

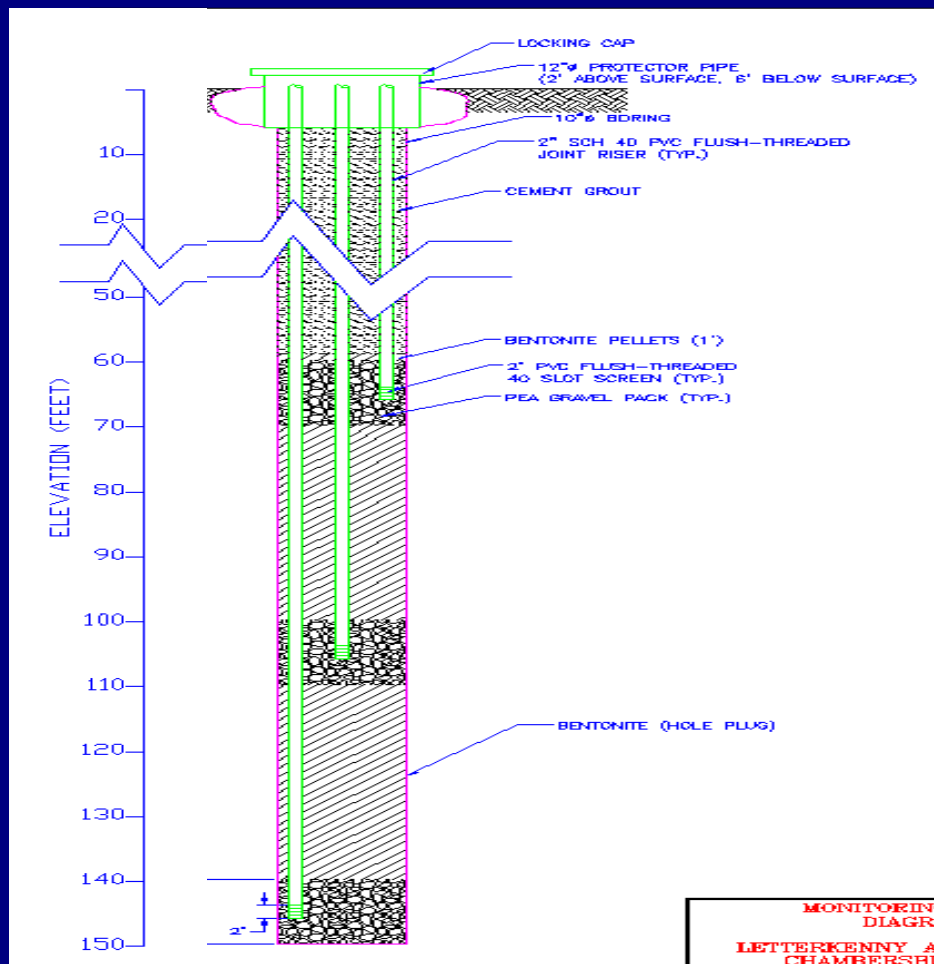
- **Available information**
 - Well drilling logs
 - Pumping, slug tests
 - Pumping records
 - Aerial photo analysis
 - Geophysical logs
 - Dye studies
 - Geologic Mapping
 - Previous pilot tests



US Army Corps
of Engineers
Baltimore District

Design of injection, delivery and monitoring system

- Three 3-level injection wells, oriented to test preferential flow directions in epikarst and fractured bedrock
- Four 3-level monitoring wells spaced 20, 40 and 100 feet along suspected flow pathways

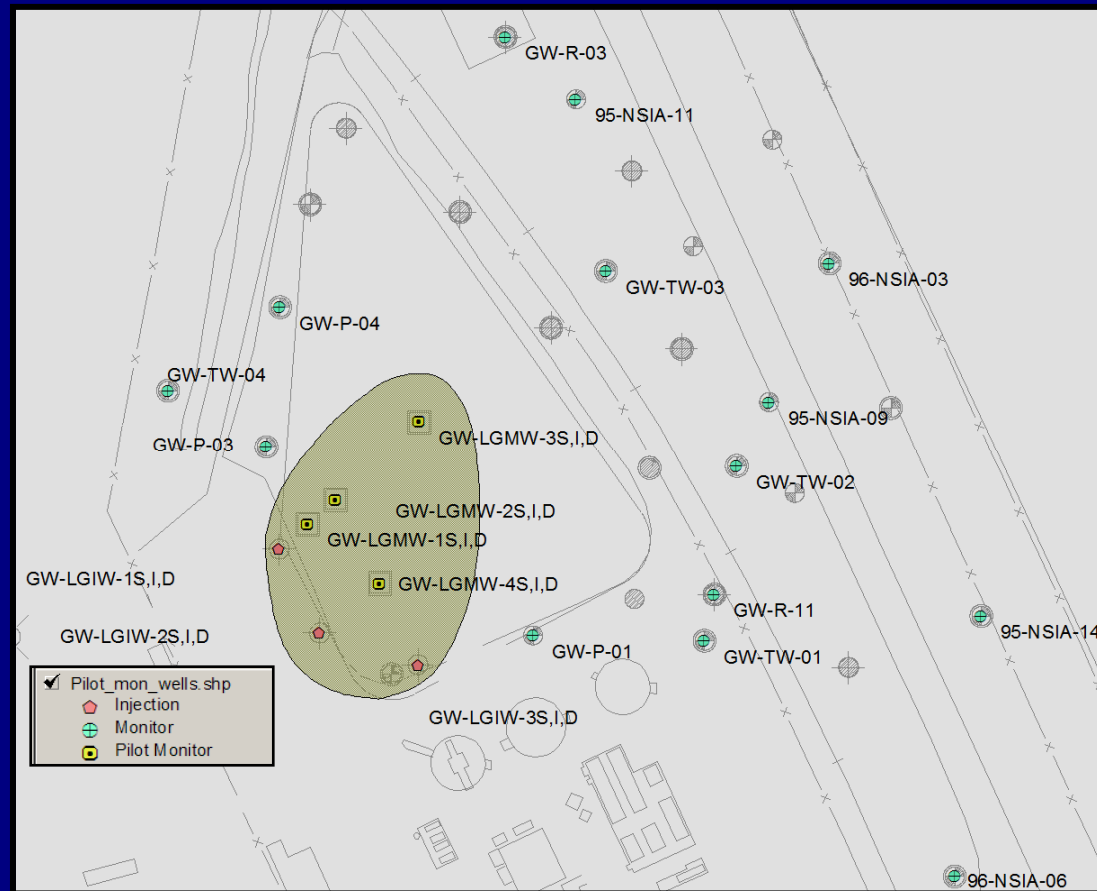


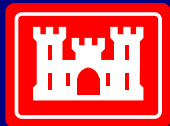


US Army Corps
of Engineers
Baltimore District

Design of injection, delivery and monitoring system

- Injected quantity of fluid to occupy 1 aquifer pore volume (15 gpm for 5 days).
- Injection rate chosen to minimize contaminant mobilization.
- Injected fluid immediately up-gradient of contaminant source.

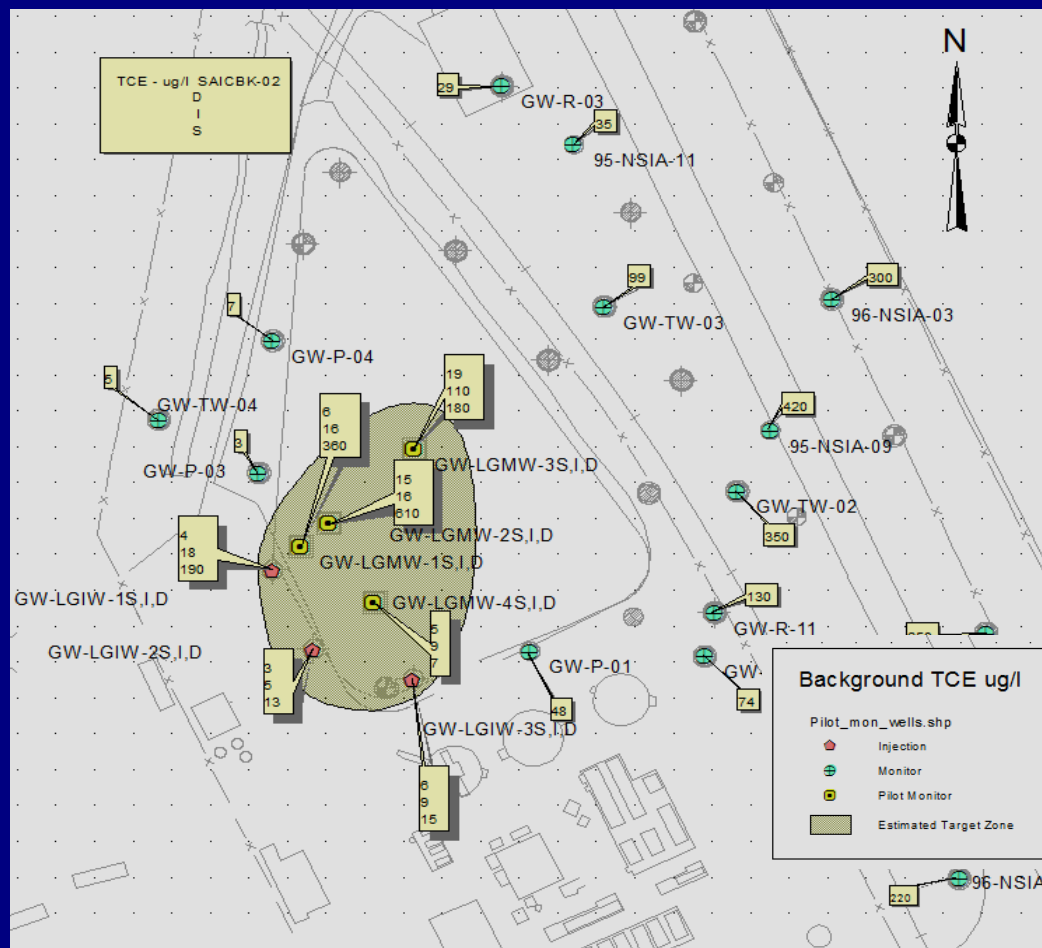


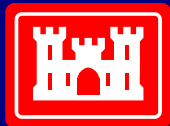


US Army Corps
of Engineers
Baltimore District

TCE – Baseline Concentrations

- **Two rounds**
 - 3 Injection wells
 - 4 Pilot monitoring wells
 - 14 existing monitoring wells
- **10-650 ppb TCE**
- **10-1170 ppb TVOCs**

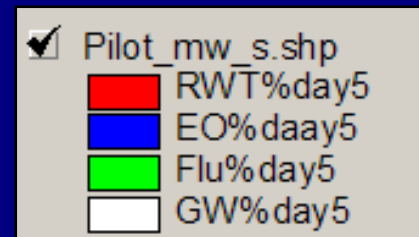




US Army Corps
of Engineers
Baltimore District

Dye Injection - Depth Differential

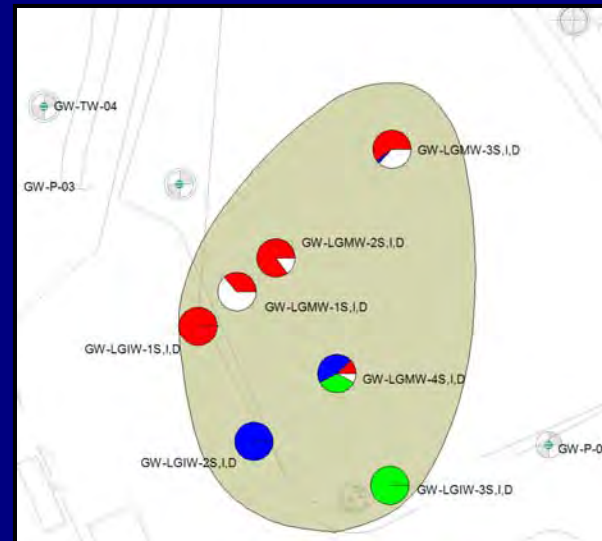
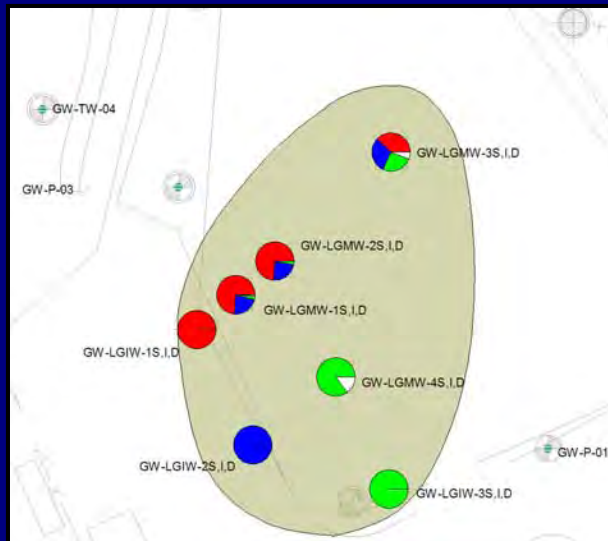
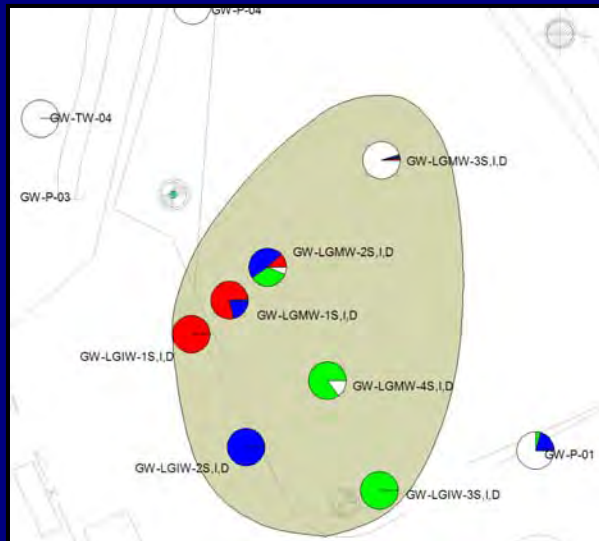
- Shallow injection to the northwest
- Deep injection to the northeast
- High level of displacement achieved



Shallow 50-70'

Intermediate 100-110'

Deep 140-150'





US Army Corps
of Engineers
Baltimore District

Peroxone Injection

- Injected 5 gpm/well
15 gpm for total
system
- Continuous
injection for 13
days.



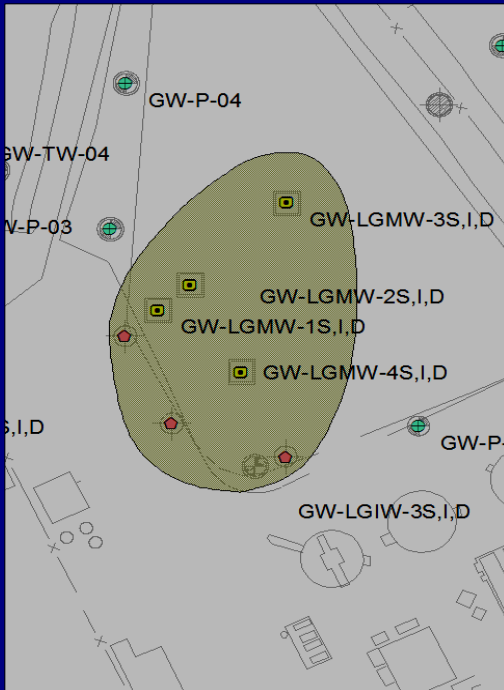


US Army Corps
of Engineers
Baltimore District

Peroxone Injection

● Monitored for:

- VOCs, anions, carbonate, chlorides
- DO, ORP, pH, Temp, Sp. Cond, H_2O_2 , Fe, CO_2 , O_3

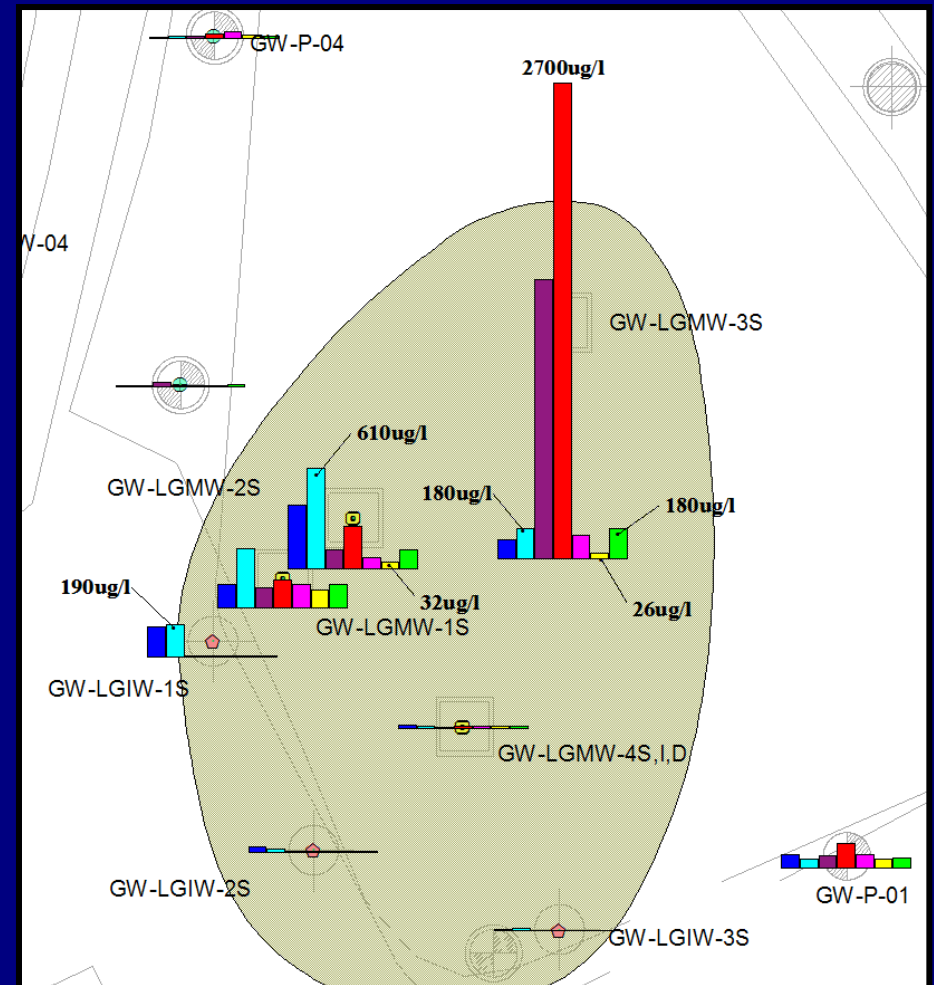
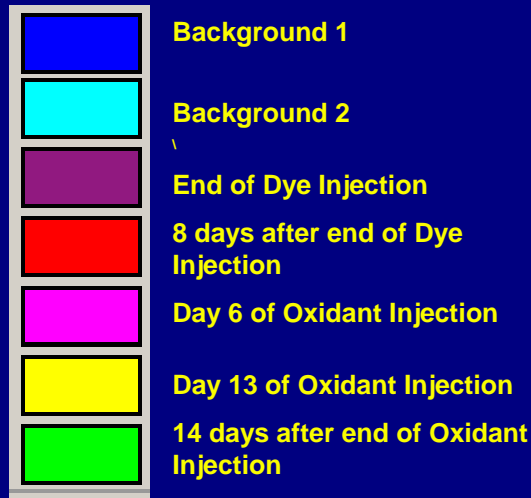




US Army Corps
of Engineers
Baltimore District

Peroxone Injection

- TCE concentrations in target zone reduced significantly with injection of oxidant

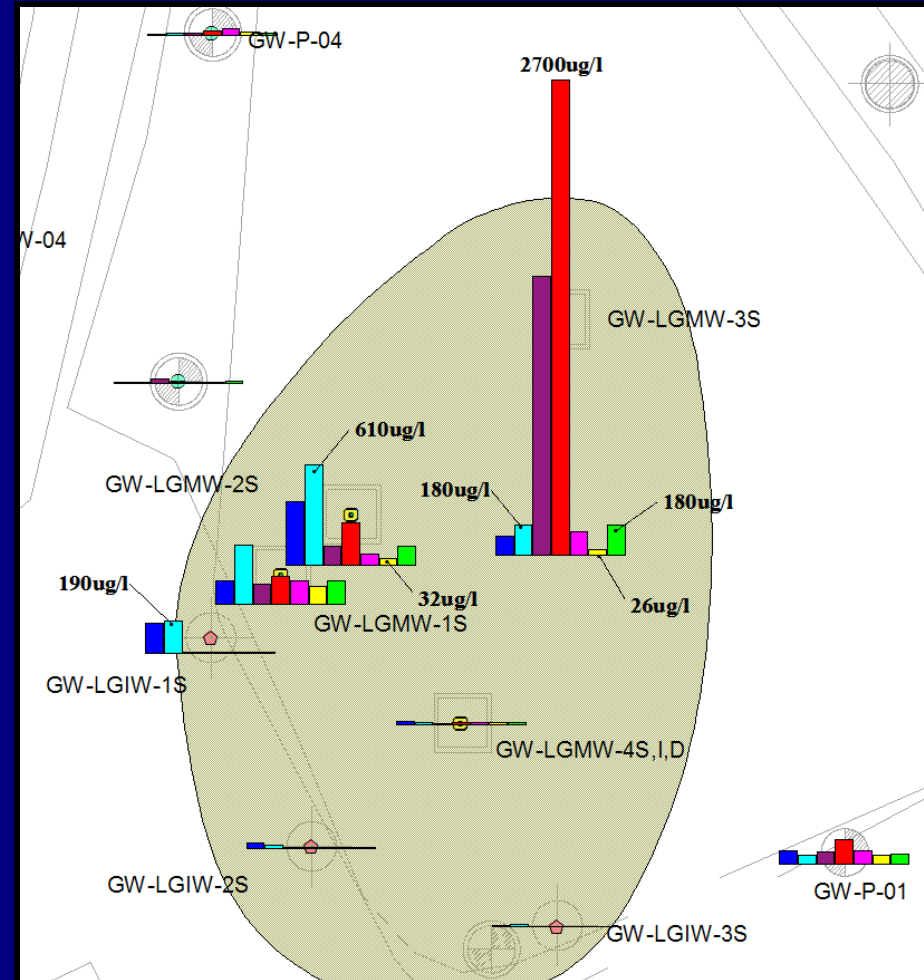




US Army Corps
of Engineers
Baltimore District

Peroxone Injection (Cont'd)

- Dye Injection raised concentration of COCs
- TCE concentrations in target zone reduced significantly with injection of oxidant
- Rebound to pretest levels indicates response time of system
- Did not expect to permanently reduce concentrations in pilot test time frame

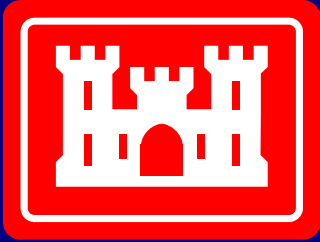




US Army Corps
of Engineers
Baltimore District

Conclusions

- **Up front hydrogeologic characterization was sufficient to design injection system.**
- **Multi-level injection important to gain 3D distribution in target zone.**
- **Objective to displace aquifer water with injected solution was realized.**
- **Concentrations of TCE reduced by oxidant injection**
- **More testing required to evaluate ozone persistence and long term impacts.**
- **Microbial and cave shrimp populations rebounded**

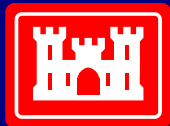


**US Army Corps
of Engineers**
Baltimore District



Enhanced Bioremediation Of VOC-Contaminated Groundwater SE OU 10

**Letterkenny Army Depot
Chambersburg, PA**



US Army Corps
of Engineers
Baltimore District



Introduction/Site History

- Release of chlorinated solvents occurred from sewer lines around Building 37
- Release of petroleum products occurred from return line of UST system at the south end of Building 37
- Sewer system repaired and UST replaced
- FFS commenced to identify remedial action alternatives
- Enhanced bioremediation pilot study initiated



**US Army Corps
of Engineers**
Baltimore District

Characterization Activities



- **Investigations Completed Before Field Biopilot Testing**

- Geologic Mapping and Analysis
- Surface Geophysical Surveys
- Monitor Well Installation
- Downhole Geophysical Logging
- Aquifer Testing - Packer and Pumping Tests
- Dye Studies
- Groundwater Sampling for Contaminants & Natural Attenuation Parameters
- Microcosm Studies





US Army Corps
of Engineers
Baltimore District

Microcosm Study

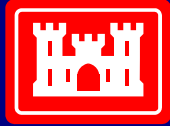




US Army Corps
of Engineers
Baltimore District

Summary of Groundwater Analytical Results

- VOCs in groundwater consisted mainly of TCE, 1,1,1-TCA, 1,2-DCE, 1,1-DCE, 1,1-DCA, Vinyl Chloride and Chloroethane.
- VOCs ranged from 7.4 ug/L to 574 ug/L.
- 4 wells within VOC plume contained BTEX (ranging from 7.3 ug/L to 916 ug/L).

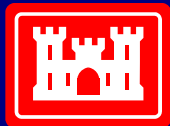


**US Army Corps
of Engineers**
Baltimore District

Conclusions from Bench Top Studies



- **Microbial processes are destroying dissolved CAH contamination at Building 37.**
- **Microbial processes responsible for degradation are anaerobic (probably methanogenic). No evidence of aerobic degradation.**
- **Indigenous microbial communities are robust and can be stimulated to accelerate reductive dechlorination processes.**
- **Field biopilot study initiated to facilitate further development of anaerobic/methanogenic conditions by adding anaerobic substrate.**



US Army Corps
of Engineers
Baltimore District



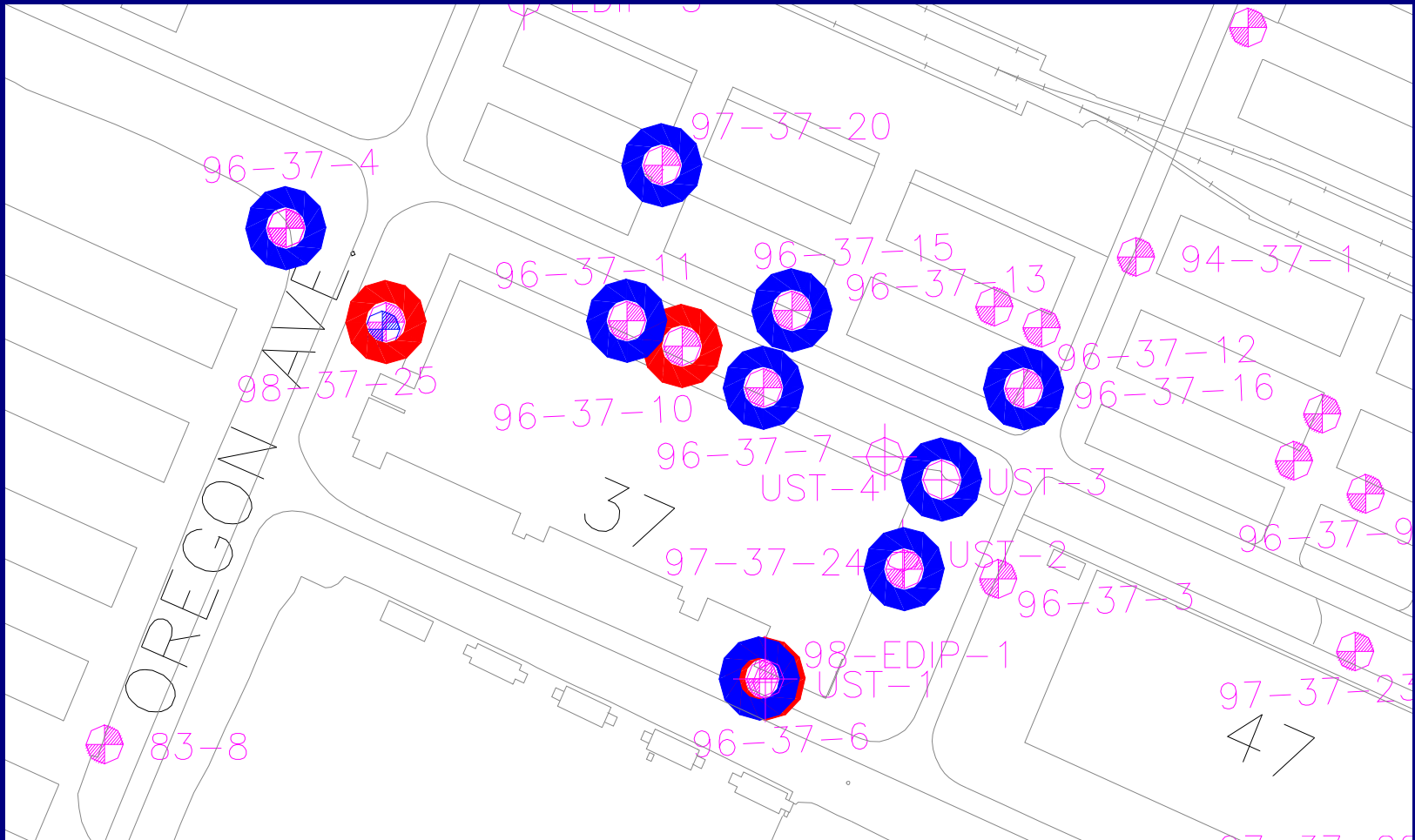
Enhanced Biopilot Study Objective and Scope

- Evaluate the feasibility of in-situ enhanced bioremediation of dissolved CAHs
- Nutrient introduction
 - Continuously introduce sodium lactate solution at 3 locations for 44 days.
 - Inject 400 liters/day at 27,150 mg/L.
- Dye tracing
 - Add dye(s) to nutrient solution as a tracer.
- Six-Month monitoring period
 - Monitor geochemical parameters.
 - Monitor distribution of nutrients/tracer dye(s).
 - Monitor CAH concentrations, distribution, and presence/absence of degradation products.



US Army Corps
of Engineers
Baltimore District

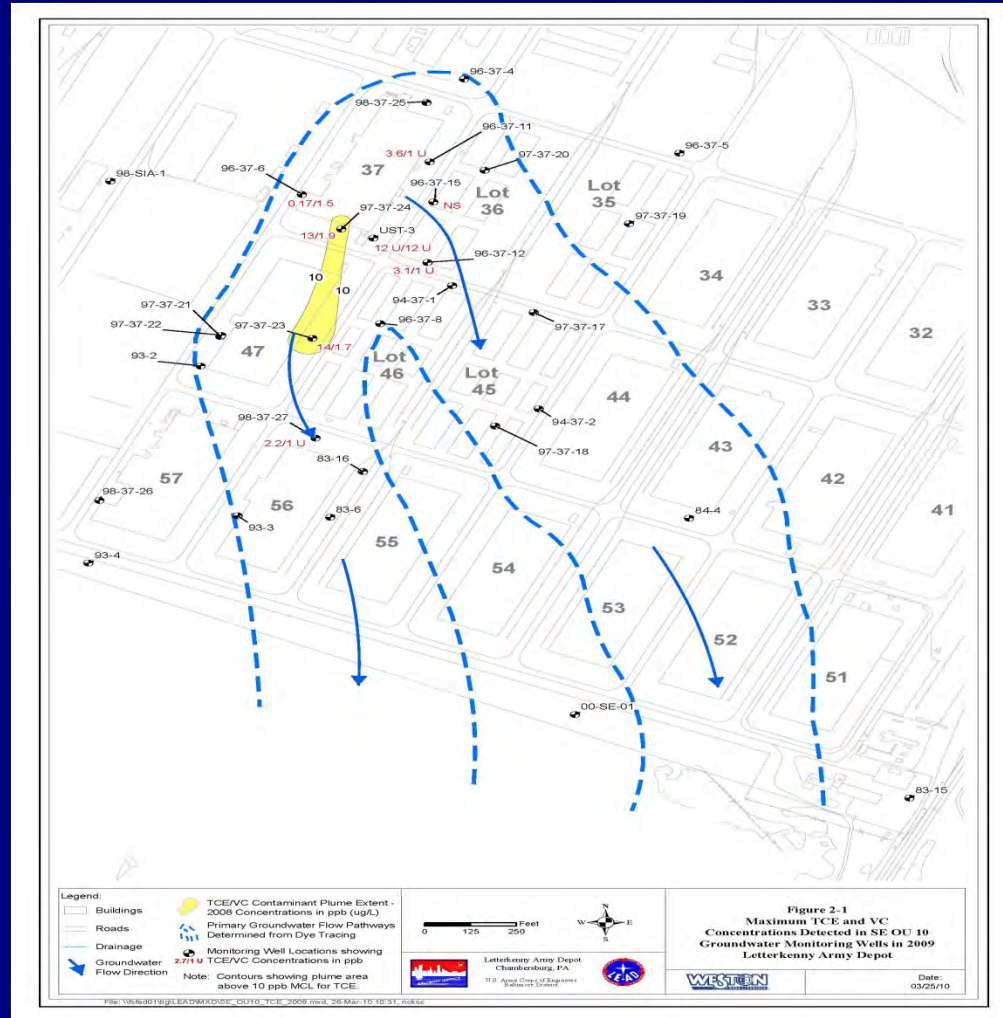
Nutrient Introduction and Monitoring Points for Field Biopilot Test





US Army Corps
of Engineers
Baltimore District

TCE and VC 2009

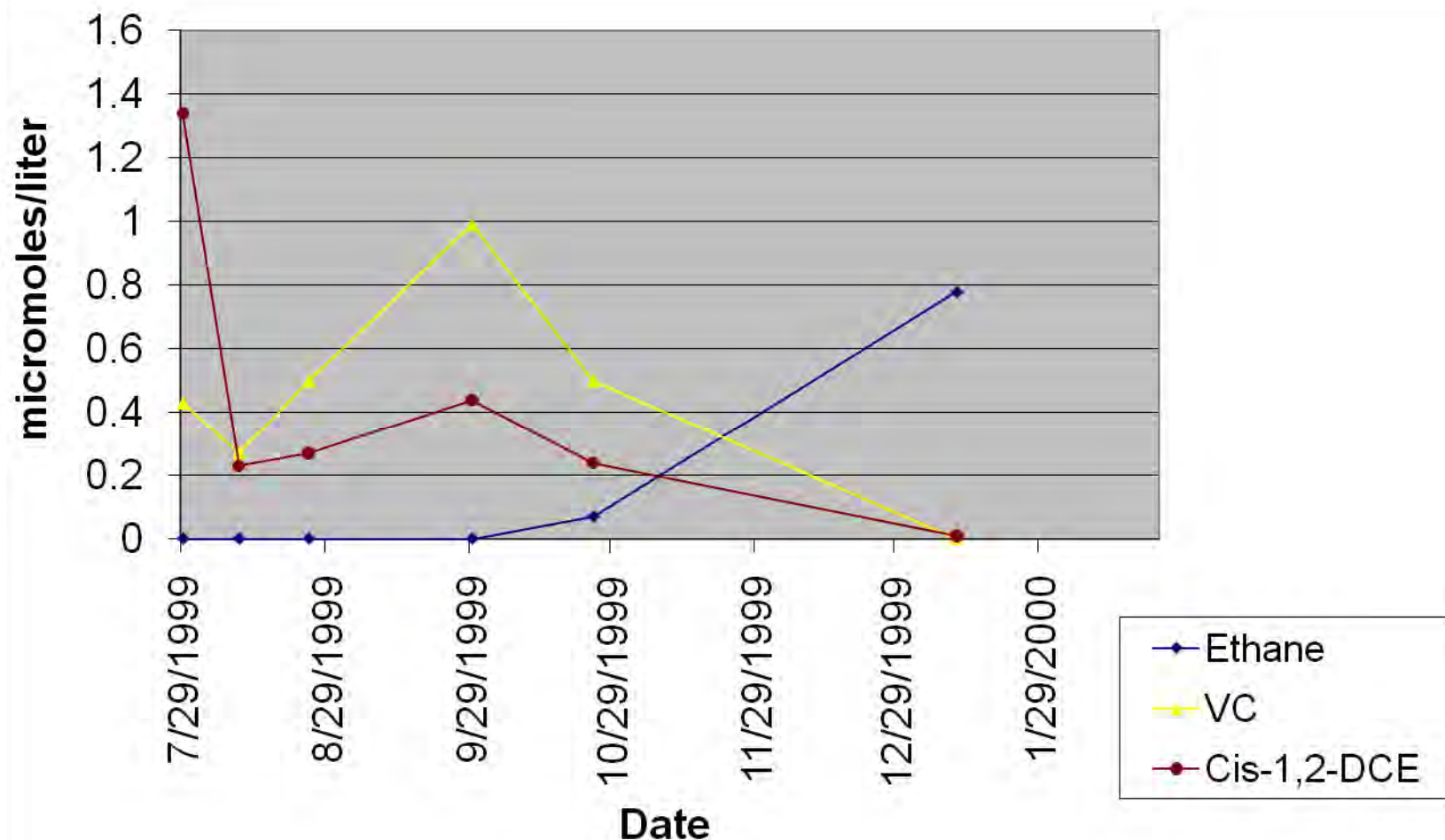


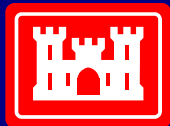


US Army Corps
of Engineers
Baltimore District

Solvent Variation with Time

Well 96-37-11

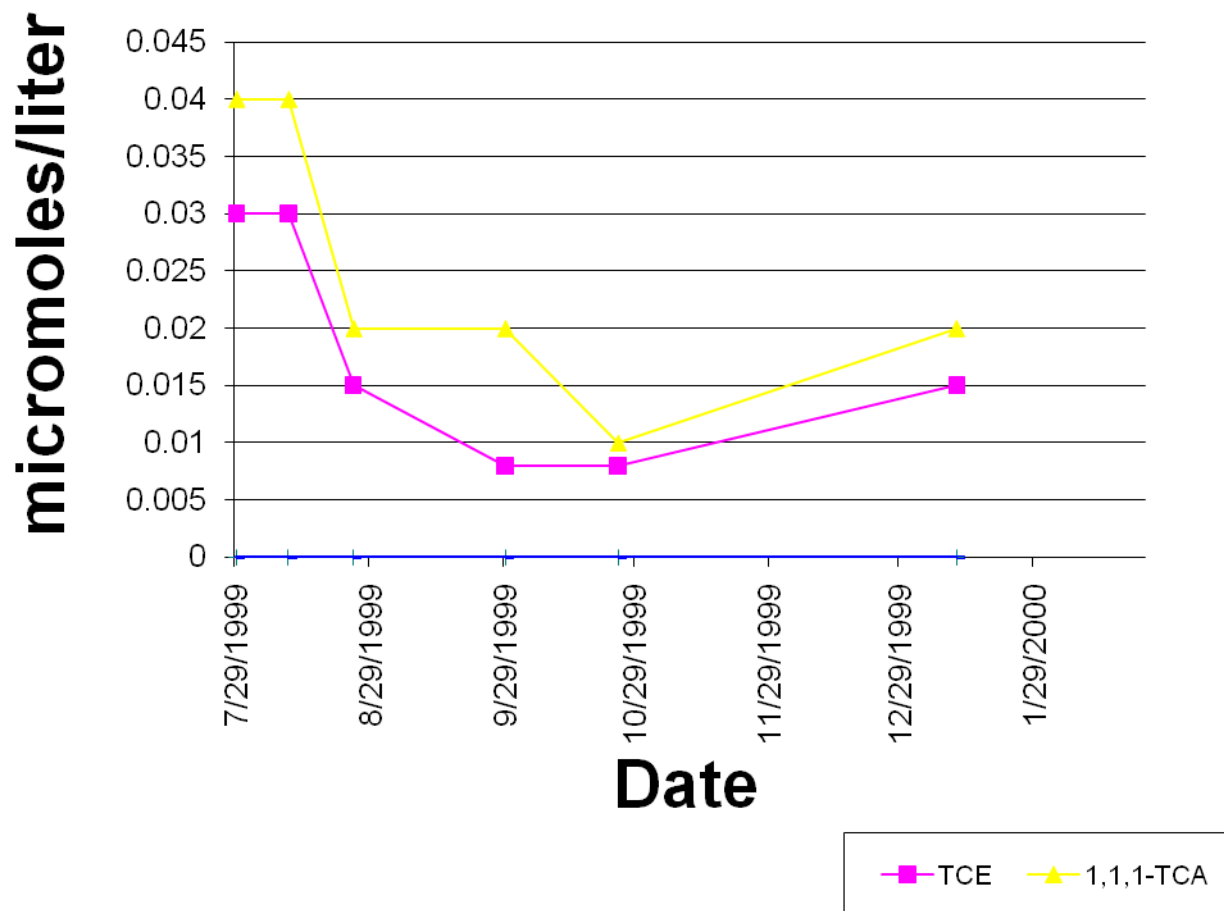




US Army Corps
of Engineers
Baltimore District



Solvent Variation with Time Hawbaker Spring





**US Army Corps
of Engineers**
Baltimore District

Hawbaker Spring





**US Army Corps
of Engineers**
Baltimore District

Summary

- **Complete reductive dechlorination of VOCs demonstrated through production of end-point daughters**
- **Multiple degradation pathways have been observed in the natural environment**
- **Retention periods of up to 6 months have been observed for dye and nutrients.**
- **Total mass of chlorinated solvents in site groundwater has been reduced over study period**
- **Discharges to off-post springs have been reduced/eliminated**



**US Army Corps
of Engineers**
Baltimore District

Conclusions

- **Extensive site characterization required before attempting to pilot a technology in karst**
- **Determining migration pathways crucial**
- **Law of diminishing returns for ISCO**
- **TI may be required (and information to support it)**
- **Natural Attenuation usually part of the remedy**
- **Monitoring costs may be substantial**
- **Verifying no migration of oxidants important**
- **RA issues and karst**



**US Army Corps
of Engineers**
Baltimore District

Cost of Pilot Studies

- **SE OU 3 – ~ 400K (DA In-Situ Chemical Remediation Oxidation Pilot Study; H₂O₂)**
- **SE OU 10 – ~ 260K (In-Situ Enhanced Biodegradation-Pilot)**
- **SE OU 11 – ~ 450K (In-Situ – Ozone Pilot Study (Lagoon Area))**