



APPENDIX I: ECOSYSTEM PROTECTION IMPLEMENTATION PLAN

GFNMS MANAGEMENT PLAN

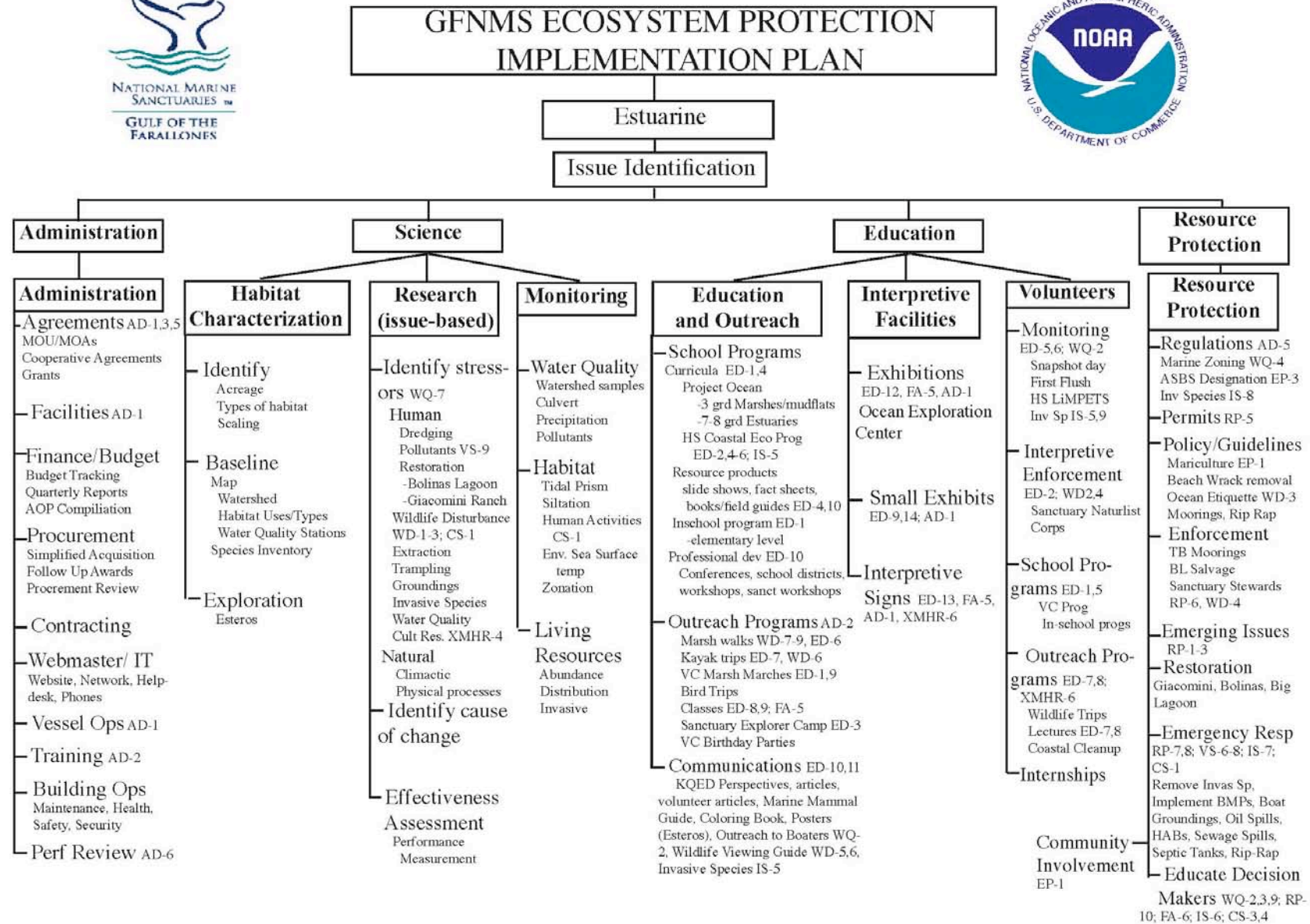
- A. Estuarine Habitat**
- B. Open Ocean Habitat**
- C. Rocky Shores Habitat**
- D. Sandy Shores Habitat**

Ecosystem Protection Implementation Plan

Introduction

The following Ecosystem Protection Implementation Plan presents the strategies from the Management Plan organized into four key habitats of the sanctuary: estuarine, rocky shores, sandy shores, and open ocean. This organizational chart prioritizes the implementation of strategies to ensure that the sanctuary adequately addresses the priority resource management issues within each key habitat. This chart allows sanctuary staff to identify opportunities to collaborate between program areas focused around priority sanctuary habitats. These charts are organized by the sanctuary's programmatic organizational structure, within the context of the four priority sanctuary habitats. A lead staff member will oversee each habitat team to ensure coordination across program areas and protection for each habitat. Additionally, since Gulf of the Farallones and Monterey Bay sanctuaries share joint management authority over the geographic area between the Marin Headlands in the north and Ano Nuevo in the south, strategies from the Monterey Bay Sanctuary Management Plan that address issues in the four priority habitats within the shared area are noted in the Ecosystem Protection Implementation Plan.

Appendix IA: Estuarine Habitat

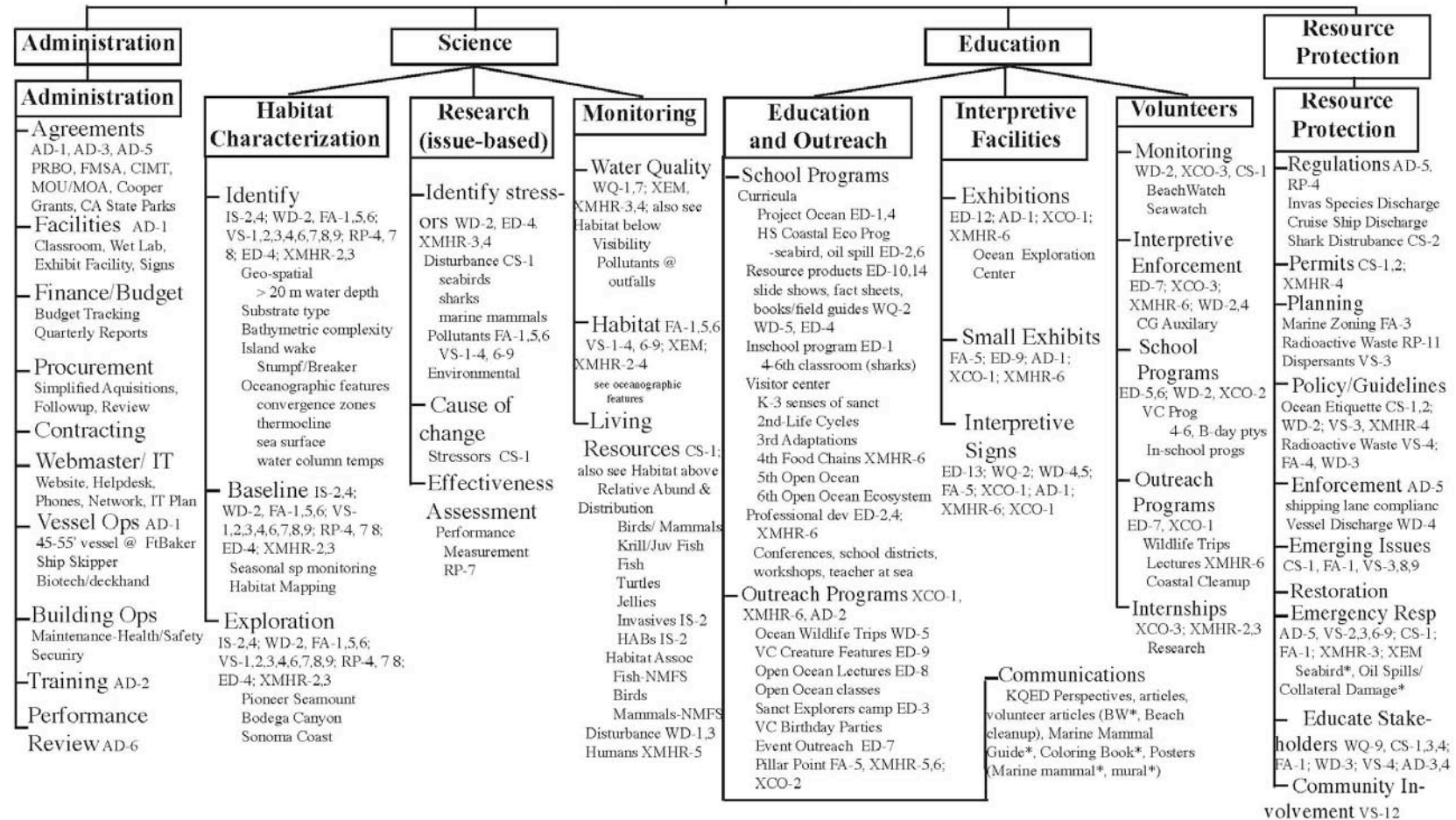


Appendix IB: Open Ocean Habitat



GFNMS ECOSYSTEM PROTECTION IMPLEMENTATION PLAN

Open Ocean Issue Identification



Appendix IC: Rocky Shores Habitat

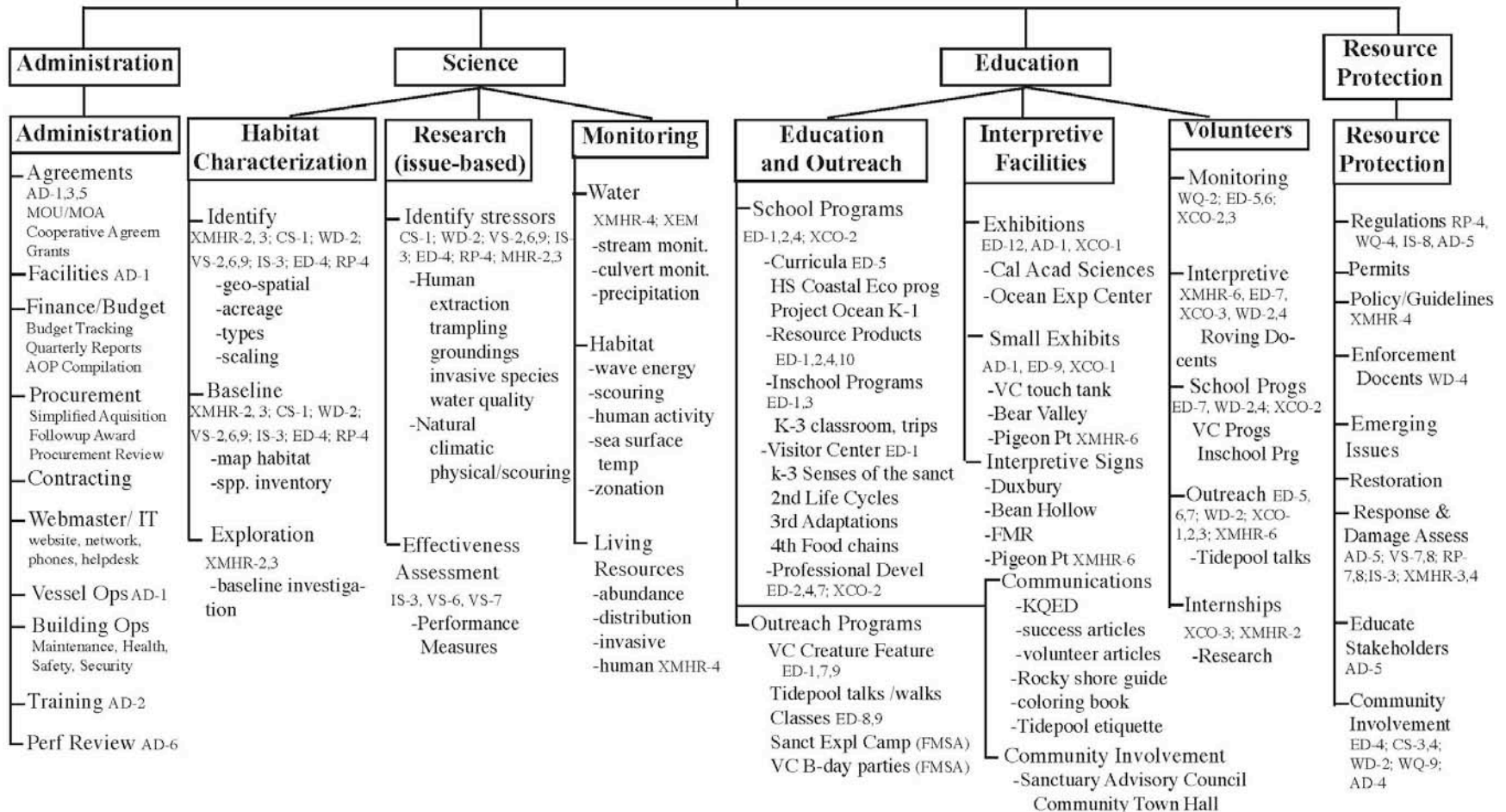


GFNMS ECOSYSTEM PROTECTION IMPLEMENTATION PLAN



Rocky Shores

Issue Identification



Appendix ID: Sandy Shores Habitat



GFNMS ECOSYSTEM PROTECTION IMPLEMENTATION PLAN



Sandy Shores

Issue Identification

