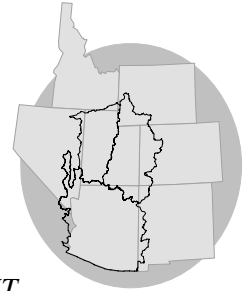


WATER SUPPLY OUTLOOK

for the UPPER COLORADO

COLORADO BASIN RIVER FORECAST CENTER

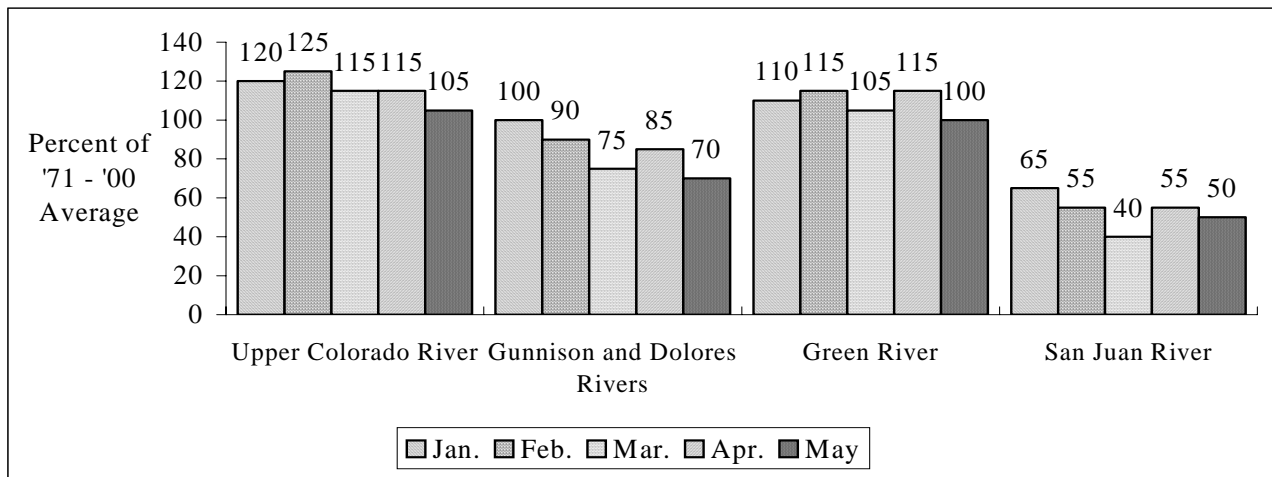
NATIONAL WEATHER SERVICE, SALT LAKE CITY, UT



MAY 1, 2006

April precipitation, with just a few exceptions, was below to much below average over the basin with above normal temperatures. This led to above normal melt with many areas experiencing above to much above normal streamflow for April. In general, forecasts dropped from those issued April 1st.

APRIL - JULY VOLUME FORECASTS

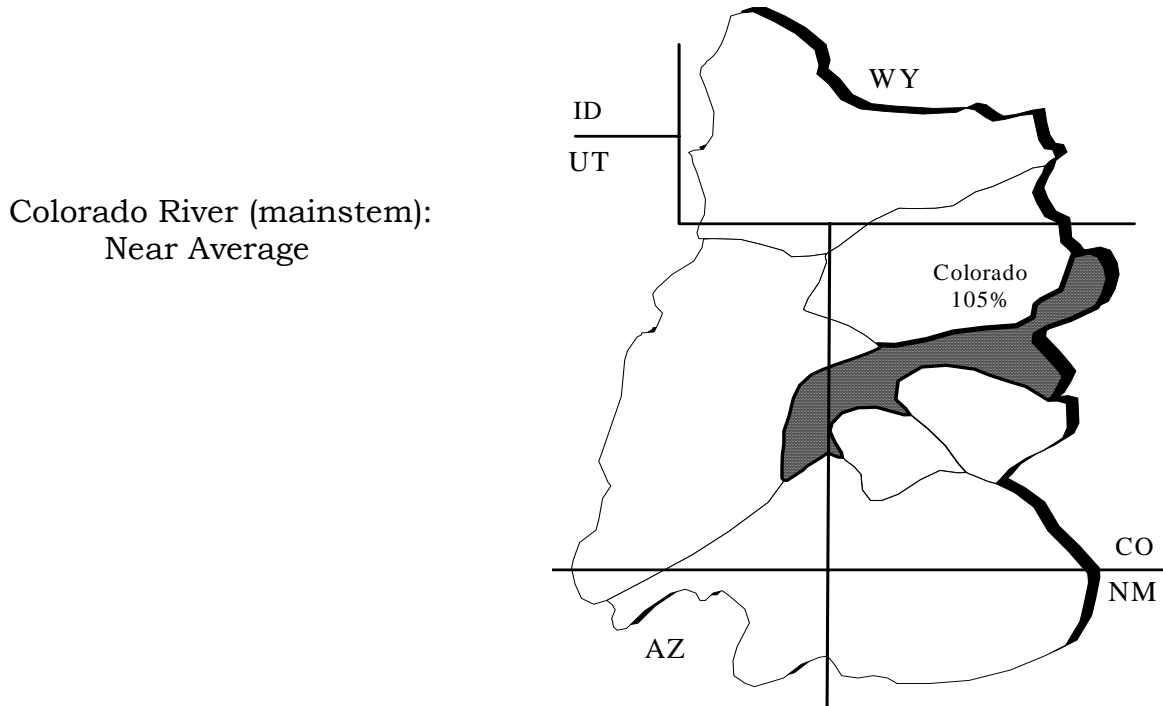


| INSIDE | |
|------------------------------|-------|
| Summary | 1 |
| Upper Colorado Mainstem | 2 |
| Gunnison and Dolores Rivers | 3 |
| Green River | 4 |
| San Juan River | 5 |
| Specific Site Forecasts | 6 |
| Flood Control Forecasts | 11 |
| Res. Monthly Infl. Forecasts | 12 |
| EOM Reservoir Contents | 13 |
| Monthly Streamflows | 14 |
| Precipitation Maps | 16,17 |
| Additional Information | 18 |

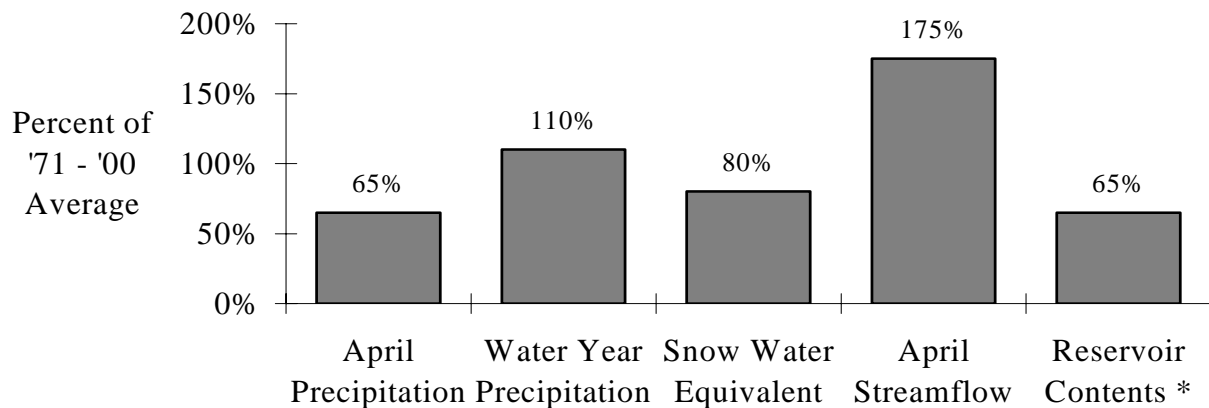
UPPER COLORADO MAINSTEM

April precipitation was below to much below average over the Upper Colorado headwaters. Streamflows were above to much above average due to above normal temperatures, especially during the last half of April. Forecasts generally decreased from those issued April 1 and now vary from 75% to 113% of the April through July average.

April-July streamflow forecasts for the Upper Colorado Mainstem are as follows:



BASIN CONDITIONS - MAY 1, 2006



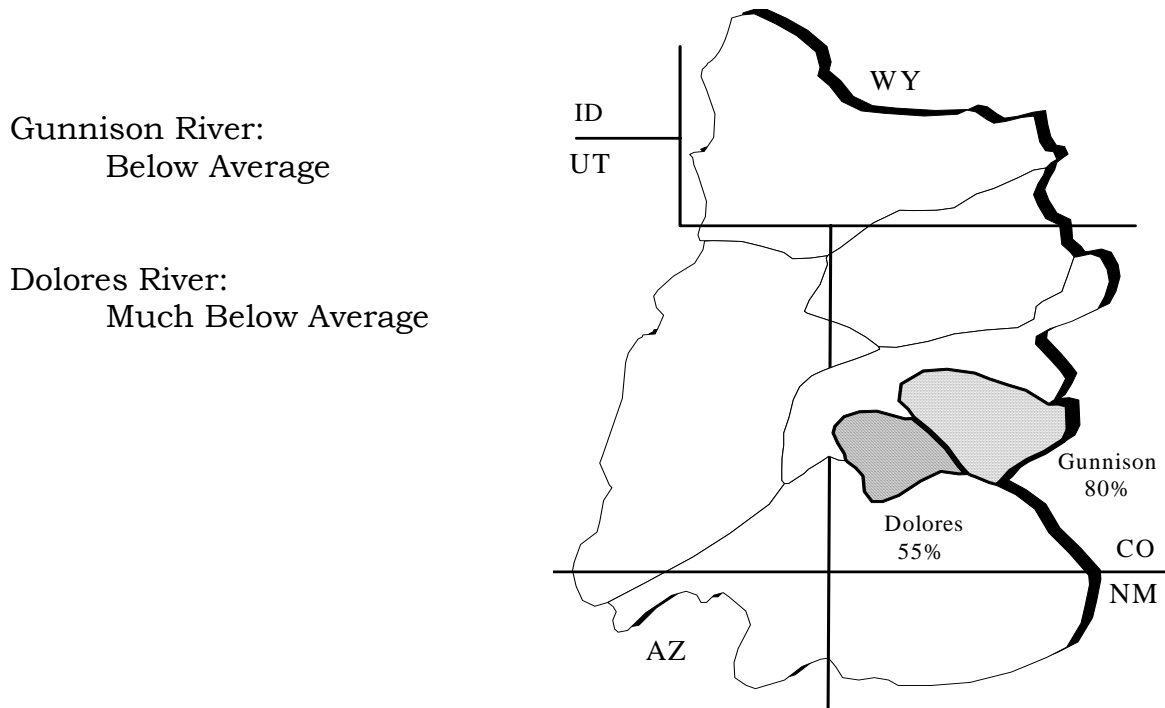
* Percent usable capacity, not percent average contents.

Specific site forecasts are listed beginning on page 6.

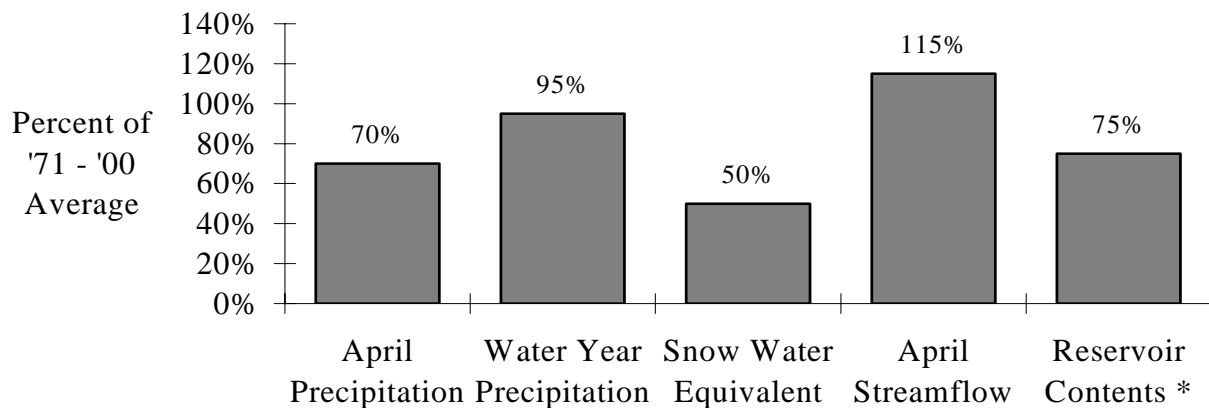
GUNNISON AND DOLORES RIVERS

April precipitation was below to much below average over the Gunnison/Dolores/San Miguel basins. Streamflows were above to much above average in most areas due to above average temperatures during the latter half of April, but below average on the lower Dolores. Forecasts now range from 41% to 85% of the April-July average.

April-July streamflow forecasts for the Gunnison and Dolores Rivers are as follows:



BASIN CONDITIONS - MAY 1, 2006



* Percent usable capacity, not percent average contents.

Specific site forecasts are listed beginning on page 7.

GREEN RIVER

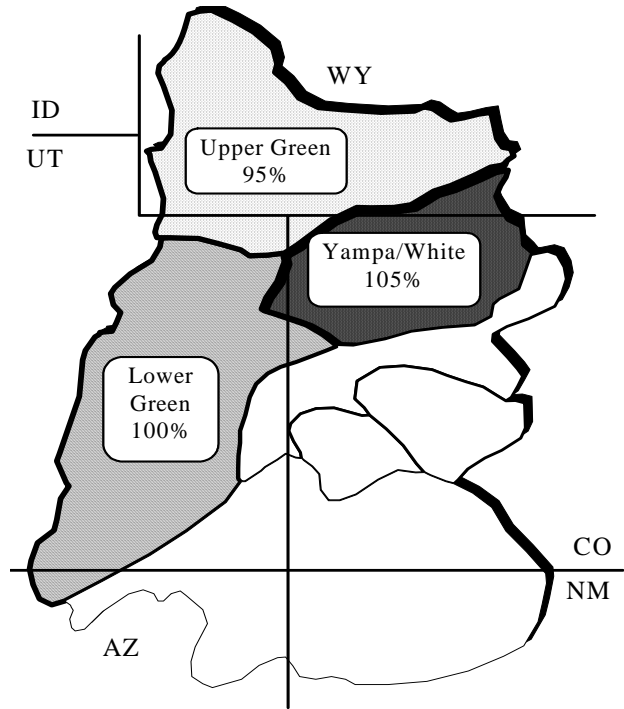
April precipitation was below average and lead to a reduction in forecasts issued April 1st. Climate outlooks indicate a trend towards below average temperatures during the next couple of weeks which may slow melt during this period. Runoff volume forecasts for areas on the mainstem Yampa, western Uintas and Wasatch Plateau remain slightly above average.

April-July streamflow forecasts for the Green River are as follows:

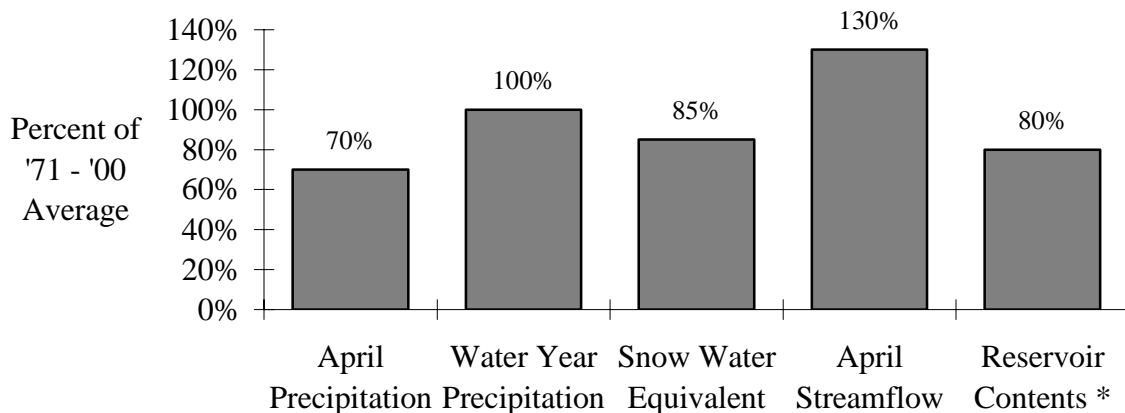
Upper Green River:
Near Average

Yampa/White Rivers:
Near Average

Lower Green River
(blo Flaming Gorge):
Near Average



BASIN CONDITIONS - MAY 1, 2006



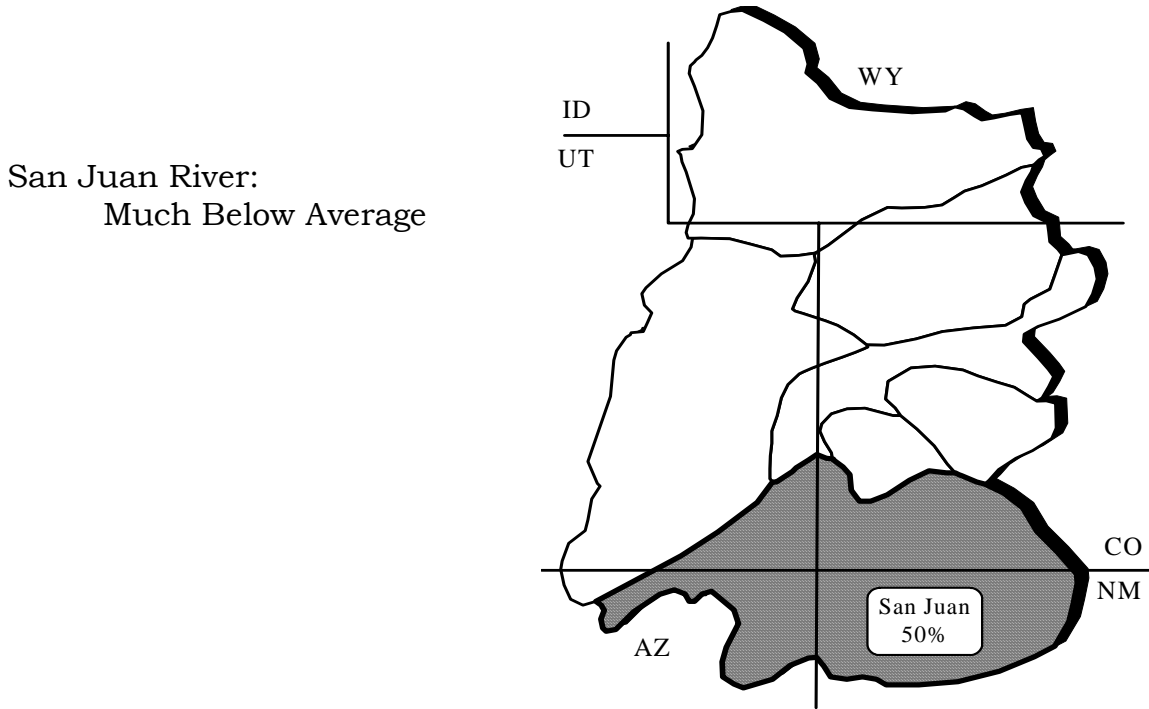
* Percent usable capacity, not percent average contents.

Specific site forecasts are listed beginning on page 8.

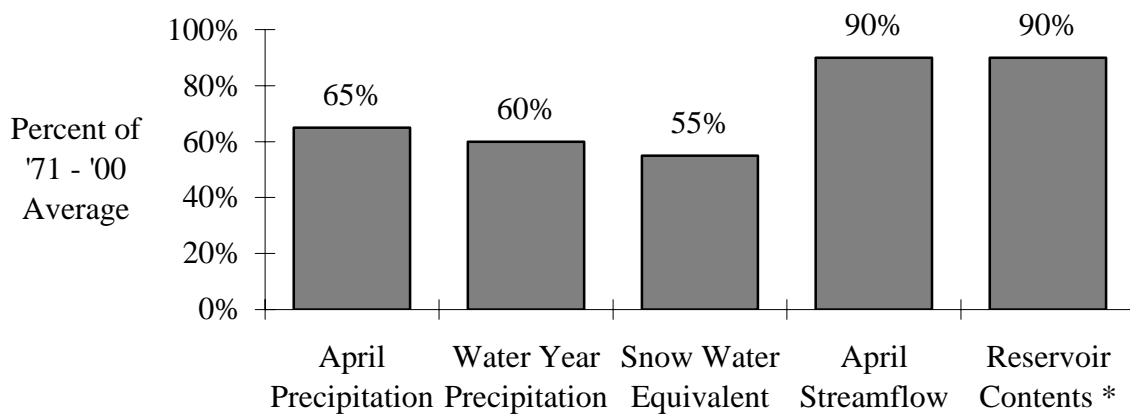
SAN JUAN RIVER

Below average precipitation in April did nothing to help the much below average water supply season in the San Juan. The snowmelt runoff began due to seasonal temperatures, but flows were on the low side of April averages. April through July runoff forecasts ranged from 16% to 68% of average with a median forecast of 52%.

April-July streamflow forecasts for the San Juan Basin are as follows:



BASIN CONDITIONS - MAY 1, 2006



* Percent usable capacity, not percent average contents.

Specific site forecasts are listed beginning on page 10.

SPECIFIC SITE FORECASTS

Upper Colorado Mainstem: April through July volume (kaf) forecasts (except where noted).

| Stream | Station | Most Probable | Percent Avg. | Reas. Max | Reas. Min |
|---------------|--------------------------------|---------------|--------------|-----------|-----------|
| COLORADO | LAKE GRANBY, GRANBY, NR | 195 | 87 | 230 | 162 |
| | DOTSERO, NR | 1530 | 106 | 1840 | 1250 |
| | GLENWOOD SPRINGS, BLO | 2230 | 103 | 2650 | 1800 |
| | CAMEO, NR | 2500 | 103 | 3030 | 1980 |
| | CISCO, NR | 4050 | 87 | 5670 | 2420 |
| WILLOW CK | WILLOW CK RES, GRANBY, NR | 38 | 75 | 49 | 29 |
| FRASER | WINTER PARK | 20 | 100 | 25 | 15.5 |
| WILLIAMS FORK | WILLIAMS FORK RES, PARSHALL, N | 103 | 108 | 123 | 86 |
| MUDDY CK | WOLFORD MTN RES, BLO | 67 | 112 | 88 | 50 |
| BLUE | DILLON RES | 185 | 111 | 220 | 154 |
| | GREEN MTN RES | 315 | 112 | 380 | 260 |
| EAGLE | GYPSUM, BLO | 380 | 113 | 460 | 305 |
| FRYING PAN | RUEDI RES, BASALT, NR | 150 | 106 | 179 | 123 |
| ROARING FORK | GLENWOOD SPRINGS | 685 | 96 | 815 | 570 |
| PLATEAU CK | CAMEO, NR | 100 | 87 | 168 | 32 |
| MILL CK | MOAB, NR, SHELEY TUN, AT | 3.9 | 78 | 4.9 | 3 |

For more detailed information about each forecast, visit www.wrh.noaa.gov/cbrfc/westernwater

SPECIFIC SITE FORECASTS

Gunnison and Dolores Basins: April through July volume (kaf) forecasts (except where noted).

| Stream | Station | Most Probable | Percent Avg. | Reas. Max | Reas. Min |
|-------------|---------------------------|---------------|--------------|-----------|-----------|
| TAYLOR | TAYLOR PARK RES | 87 | 84 | 106 | 70 |
| | ALMONT | 130 | 79 | 170 | 90 |
| EAST | ALMONT | 160 | 83 | 186 | 136 |
| GUNNISON | GUNNISON, NR | 310 | 79 | 380 | 250 |
| TOMICHI CK | GUNNISON | 45 | 56 | 68 | 29 |
| LAKE FORK | GATEVIEW | 107 | 85 | 126 | 89 |
| GUNNISON | MORROW POINT RES | 615 | 78 | 755 | 475 |
| | CRYSTAL RES | 690 | 75 | 880 | 500 |
| MUDDY CK | ★ PAONIA RES, BARDINE, NR | 71 | 71 | 92 | 56 |
| NF GUNNISON | SOMERSET, NR | 245 | 80 | 295 | 205 |
| SURFACE CK | CEDAREEDGE | 13.9 | 81 | 17.6 | 10.9 |
| UNCOMPAHGRE | RIDGWAY RES | 75 | 74 | 97 | 57 |
| | COLONA | 90 | 65 | 125 | 63 |
| | DELTA | 70 | 60 | 131 | 30 |
| GUNNISON | GRAND JUNCTION, NR | 1180 | 76 | 1580 | 780 |
| DOLORES | DOLORES | 150 | 57 | 193 | 117 |
| | MCPHEE RES | 175 | 55 | 220 | 138 |
| | CISCO, NR | 255 | 41 | 445 | 66 |
| SAN MIGUEL | PLACERVILLE, NR | 85 | 64 | 112 | 63 |

★ = March - June forecast period.

For more detailed information about each forecast, visit www.wrh.noaa.gov/cbrfc/westernwater

Green River Basin: April through July volume (kaf) forecasts (except where noted).

| Stream | Station | Most Probable | Percent Avg. | Reas. Max | Reas. Min |
|------------------|-------------------------------|---------------|--------------|-----------|-----------|
| GREEN | DANIEL, NR, WARREN BRIDGE, AT | 245 | 92 | 290 | 205 |
| | GREEN RIVER, WY, NR | 810 | 93 | 1020 | 620 |
| | GREEN RIVER, UT | 3300 | 104 | 4230 | 2370 |
| PINE CK | FREMONT LK, ABV | 101 | 97 | 118 | 86 |
| NEW FORK | BIG PINEY, NR | 370 | 94 | 460 | 290 |
| BIG SANDY | FARSON, NR | 52 | 90 | 67 | 40 |
| BLACKS FORK | ROBERTSON, NR | 97 | 102 | 123 | 74 |
| EF SMITHS FORK | ROBERTSON, NR | 26 | 84 | 36 | 18 |
| HAMS FORK | FRONTIER, NR, POLE CK, BLO | 72 | 111 | 89 | 57 |
| | VIVA NAUGHTON RES | 97 | 109 | 126 | 72 |
| YAMPA | STAGECOACH RSVR, ABV | 32 | 110 | 43 | 21 |
| | STEAMBOAT SPRINGS | 305 | 109 | 365 | 245 |
| | MAYBELL, NR | 1100 | 111 | 1210 | 690 |
| ELK | MILNER, NR | 375 | 115 | 375 | 375 |
| ELKHEAD CK | ELKHEAD, NR | 39 | 100 | 50 | 28 |
| | MAYNARD GULCH, BLO | 63 | 107 | 80 | 46 |
| FORTIFICATION CK | ★ FORTIFICATION, NR | 7.5 | 100 | 10.7 | 4.3 |
| LITTLE SNAKE | SLATER, NR | 170 | 107 | 200 | 139 |
| | DIXON, NR | 320 | 97 | 420 | 220 |
| | LILY, NR | 355 | 97 | 480 | 200 |

★= March - June forecast period.

For more detailed information about each forecast, visit www.wrh.noaa.gov/cbrfc/westernwater

Green River Basin continued: April through July volume (kaf) forecasts (except where noted).

| Stream | Station | Most Probable | Percent Avg. | Reas. Max | Reas. Min |
|---------------|--------------------------------|---------------|--------------|-----------|-----------|
| BIG BRUSH CK | VERNAL, NR, RED FLEET RES, ABV | 18 | 86 | 27 | 9.5 |
| ASHLEY CK | VERNAL, NR | 35 | 67 | 54 | 15.5 |
| WF DUCHESNE | HANNA, NR | 26 | 108 | 35 | 17.3 |
| ROCK CK | UPPER STILLWATER RES | 89 | 109 | 105 | 73 |
| | MOUNTAIN HOME, NR | 100 | 112 | 124 | 76 |
| DUCHESNE | TABIONA, NR | 106 | 101 | 137 | 75 |
| | DUCHESNE, NR, KNIGHT DIV, ABV | 200 | 106 | 245 | 156 |
| | MYTON | 250 | 94 | 360 | 141 |
| | RANDLETT, NR | 290 | 89 | 470 | 112 |
| STRAWBERRY | SOLDIER SPRINGS, NR | 62 | 105 | 96 | 28 |
| | DUCHESNE, NR | 126 | 103 | 181 | 71 |
| CURRENT CK | CURRENT CK RES | 31 | 124 | 41 | 21 |
| LAKE FORK | MOON LAKE RES, MTN HOME, NR | 73 | 107 | 94 | 52 |
| YELLOWSTONE | ALTONAH, NR | 61 | 98 | 77 | 45 |
| WHITEROCKS | WHITEROCKS, NR | 48 | 86 | 73 | 23 |
| WHITE | MEEKER, NR | 300 | 103 | 380 | 220 |
| | WATSON, NR | 315 | 103 | 420 | 210 |
| GOOSEBERRY CK | SCOFIELD, NR | 13 | 109 | 16.8 | 9.3 |
| PRICE | SCOFIELD RES, SCOFIELD, NR | 50 | 109 | 73 | 33 |
| WHITE | BLO TABBYUNE CK, SOLDIER SUMMI | 21 | 121 | 27 | 15 |
| HUNTINGTON CK | ELECTRIC LAKE | 18 | 115 | 20 | 15.7 |
| | HUNTINGTON, NR | 50 | 102 | 73 | 27 |
| SEELEY CK | JOES VLY RES, ORANGEVILLE, NR | 67 | 116 | 85 | 49 |
| FERRON CK | FERRON, NR | 46 | 118 | 56 | 36 |
| SEVEN MILE CK | FISH LAKE, NR | 4 | 57 | 7.5 | 0.51 |
| MUDDY CK | EMERY, NR | 25 | 126 | 30 | 19.7 |

For more detailed information about each forecast, visit www.wrh.noaa.gov/cbrfc/westernwater

San Juan River Basin: April through July volume (kaf) forecasts (except where noted).

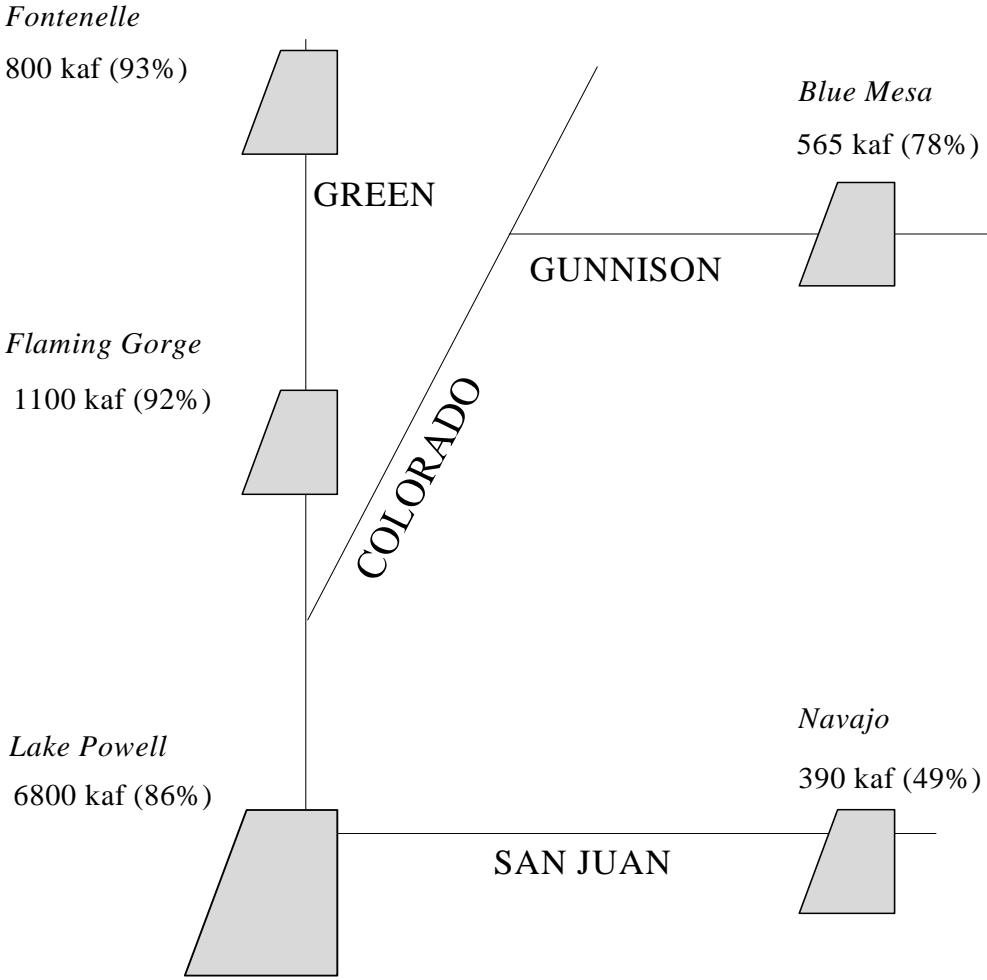
| Stream | Station | Most Probable | Percent Avg. | Reas. Max | Reas. Min |
|--------------|----------------------------------|---------------|--------------|-----------|-----------|
| SAN JUAN | PAGOSA SPRINGS | 118 | 52 | 163 | 73 |
| | CARRACAS, NR | 225 | 56 | 310 | 210 |
| | FARMINGTON | 620 | 51 | 825 | 375 |
| | BLUFF, NR | 565 | 46 | 800 | 380 |
| RIO BLANCO | PAGOSA SPRINGS, NR, BLANCO DAM | 34 | 64 | 42 | 27 |
| NAVAJO | CHROMO, NR, OSO DIV DAM, BLO | 42 | 61 | 53 | 33 |
| PIEDRA | ARBOLES, NR | 120 | 52 | 152 | 94 |
| LOS PINOS | VALLECITO RES, BAYFIELD, NR | 125 | 61 | 150 | 105 |
| ANIMAS | DURANGO | 300 | 68 | 375 | 240 |
| FLORIDA | LEMON RES, DURANGO, NR | 33 | 57 | 41 | 27 |
| LA PLATA | HESPERUS | 17 | 68 | 21 | 13.5 |
| MANCOS | MANCOS, NR | 21 | 52 | 35 | 6.7 |
| SOUTH CK | ★ LLOYD'S RSVR NR MONTICELLO, AB | 0.3 | 23 | 0.77 | 0.07 |
| RECAPTURE CK | ★ BLANDING, NR, JOHNSON CK, BLO | 1 | 16 | 2.6 | 0.24 |

★ = March - July forecast period.

For more detailed information about each forecast, visit www.wrh.noaa.gov/cbrfc/westernwater

FLOOD CONTROL FORECASTS

MOST PROBABLE FORECASTS
2006 APRIL - JULY INFLOW VOLUMES
 (% OF '71 - '00 AVERAGE)

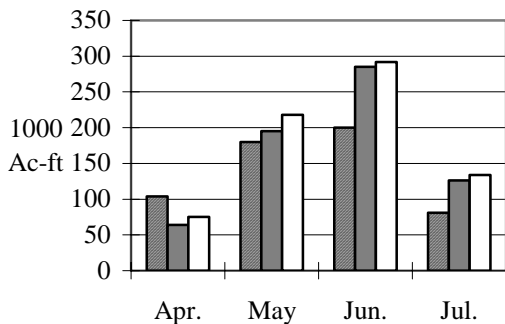


NOTE: Colorado River flood control forecasts account for a smaller set of upstream adjustments than water supply forecast points.

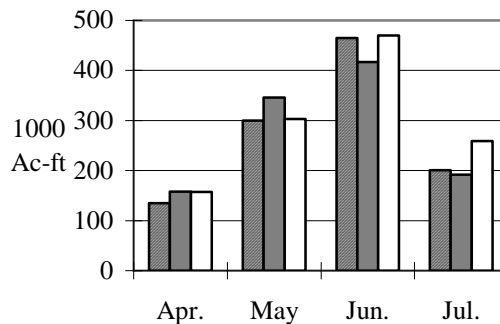
RESERVOIR MONTHLY INFLOW FORECASTS



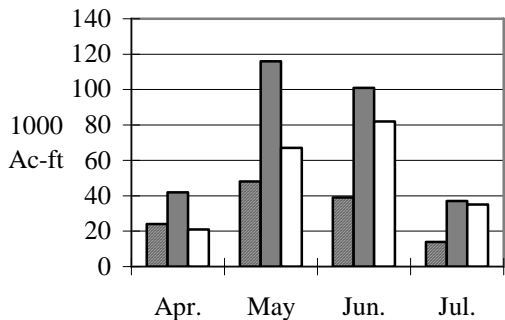
Blue Mesa Reservoir Inflow



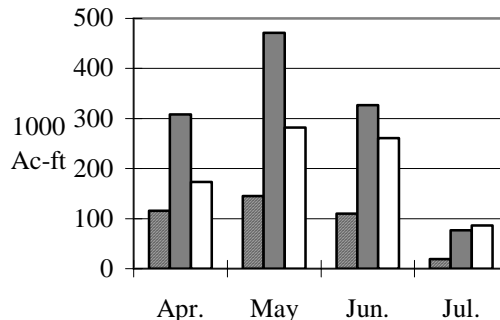
Flaming Gorge Reservoir Inflow



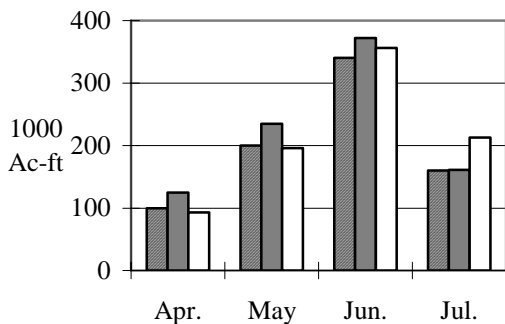
Vallecito Reservoir Inflow



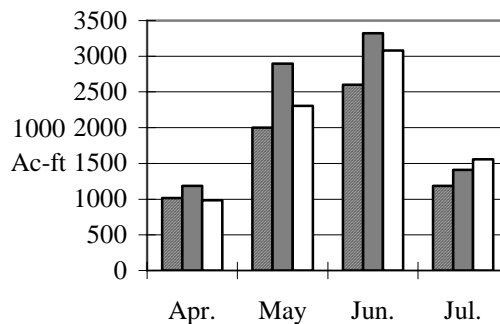
Navajo Reservoir Inflow



Fontenelle Reservoir Inflow

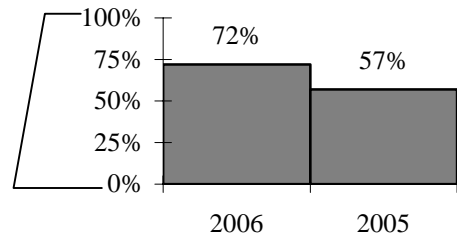
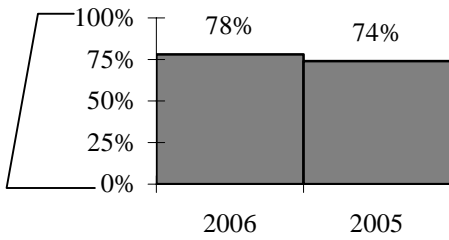


Lake Powell Inflow

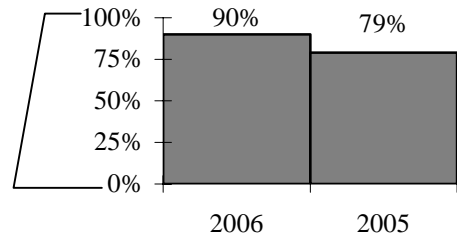
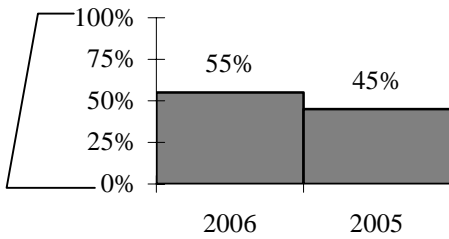


END OF MONTH RESERVOIR CONTENTS

Percent of Usable Capacity



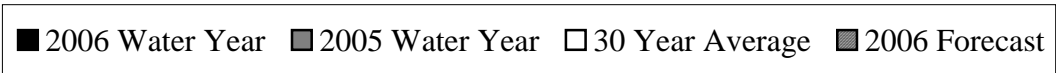
Green
 Combined
 Upper Colorado, Gunnison, and Dolores
 San Juan



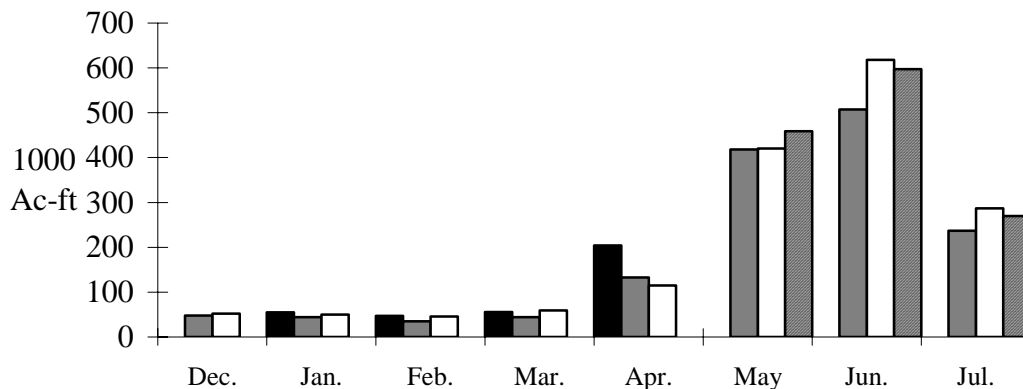
| RESERVOIR | Reservoir | Usable | EOM Usable | Percent Usable |
|----------------------|-----------|----------|------------|----------------|
| (vol. in 1000 ac-ft) | status | Capacity | Contents | Capacity |
| Fontenelle | 1,4 | 344.8 | 162.5 | 47 |
| Flaming Gorge | 1,4 | 3749 | 3036.1 | 81 |
| Strawberry | 1,4 | 1105.9 | 848.6 | 77 |
| Starvation | 1,4 | 165.3 | 143.8 | 87 |
| Lake Granby | 2,4 | 490.3 | 266.9 | 54 |
| Dillon | 2,4 | 254 | 226.9 | 89 |
| Green Mountain | 2,4 | 146.9 | 70.4 | 48 |
| Taylor Park | 2,4 | 106.2 | 74.1 | 70 |
| Blue Mesa | 2,4 | 829.5 | 602.2 | 73 |
| Ridgway | 2,4 | 83.2 | 76.1 | 92 |
| McPhee | 2,4 | 381.1 | 323.4 | 85 |
| Vallecito | 3,4 | 125.4 | 101.9 | 81 |
| Navajo | 3,4 | 1696 | 1538.2 | 91 |
| Lake Powell | 4 | 24322 | 11093.4 | 46 |

- 1 = Green River reservoir status
- 2 = Upper Colorado River reservoir status
- 3 = San Juan River reservoir status
- 4 = Combined reservoir status

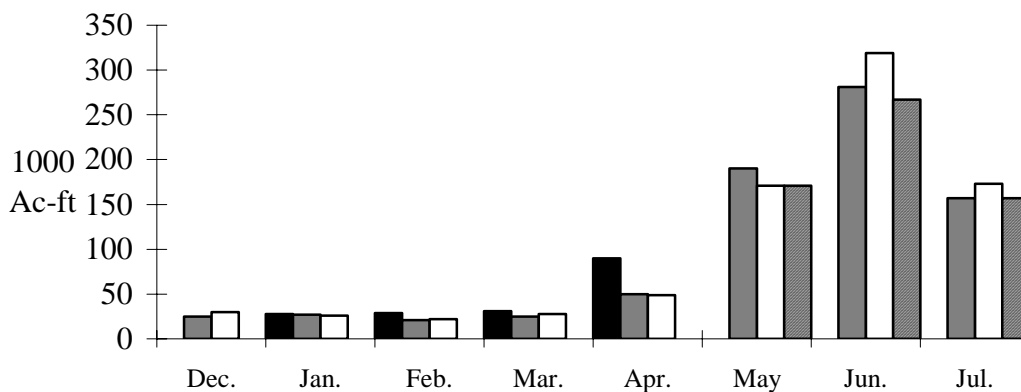
MONTHLY STREAMFLOWS



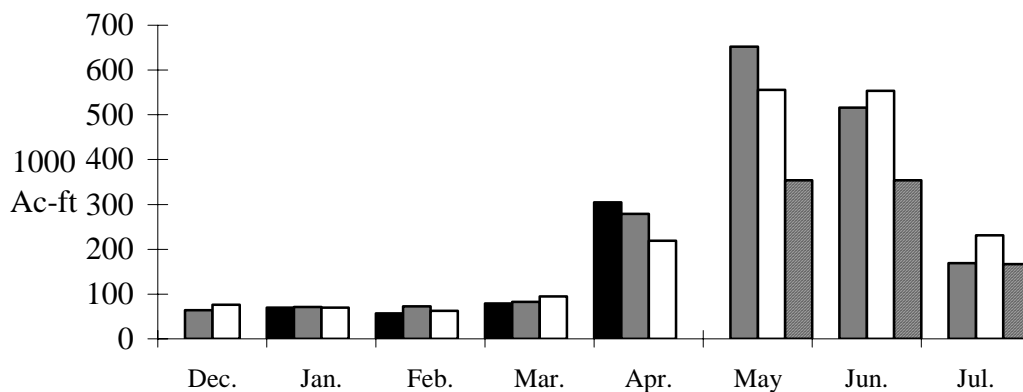
Colorado - Dotsero, nr:



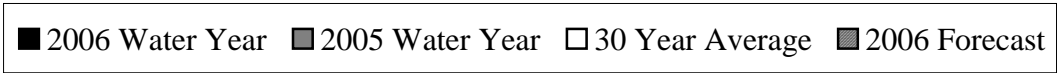
Roaring Fork - Glenwood Springs:



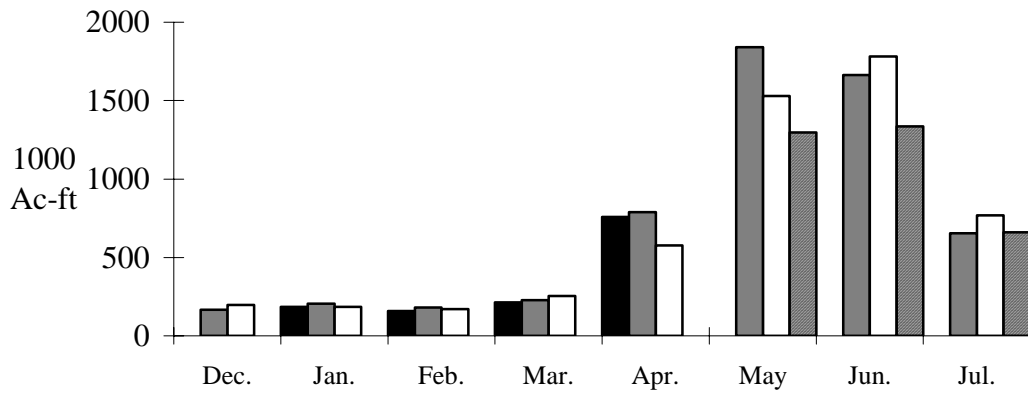
Gunnison - Grand Junction, nr:



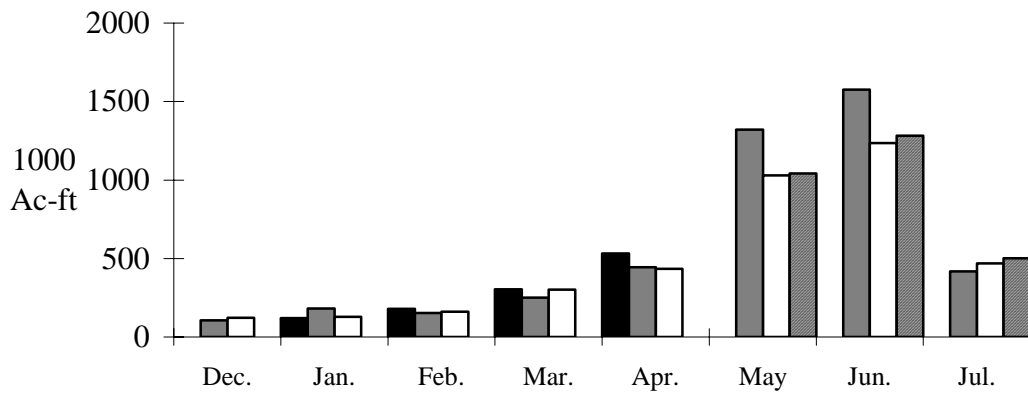
* Data Not Available



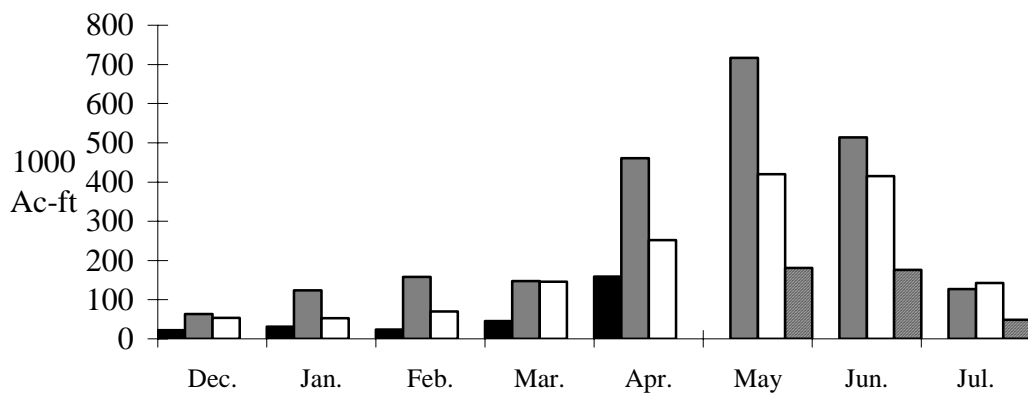
Colorado - Cisco, nr:



Green - Green River, UT:



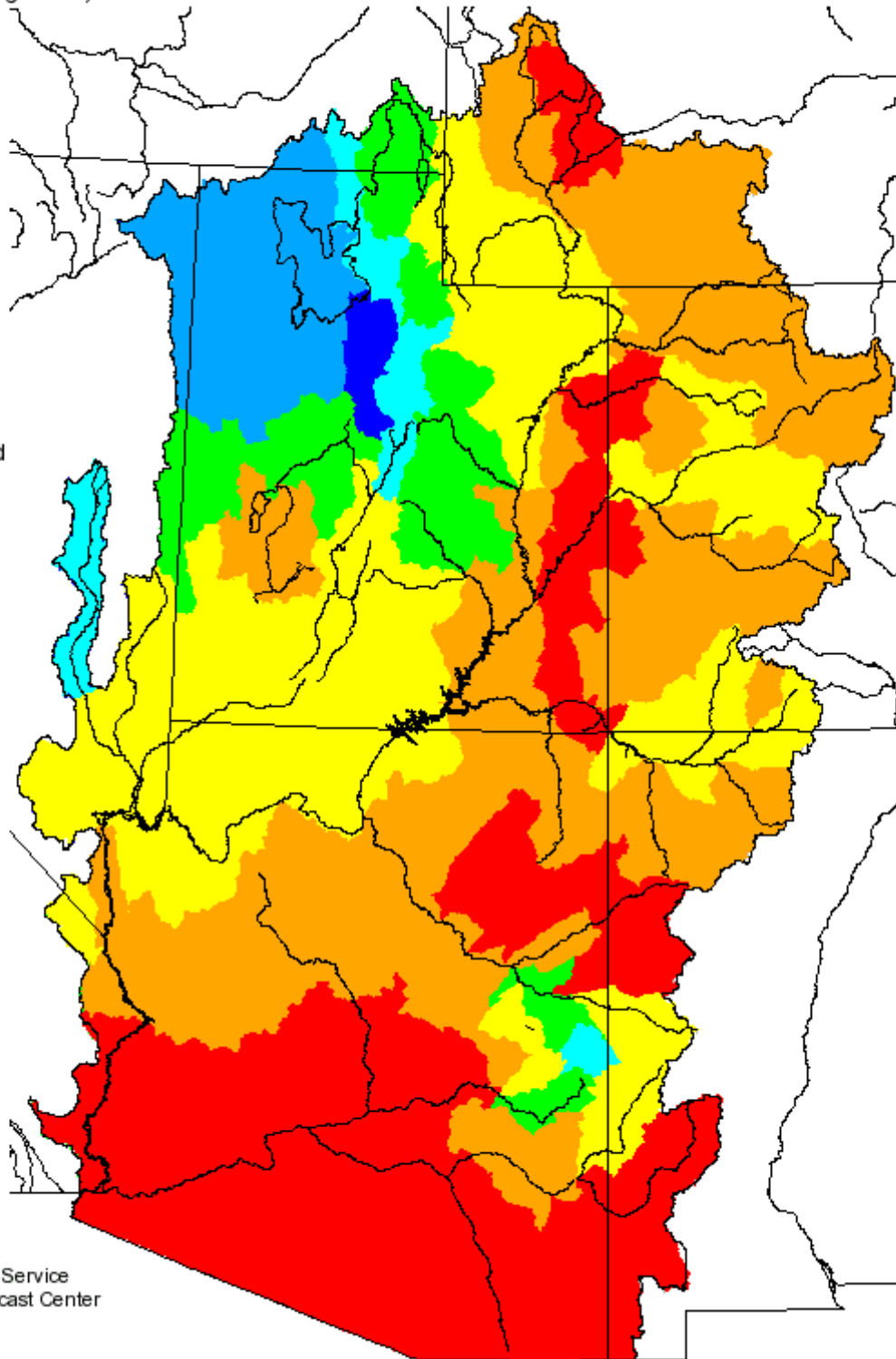
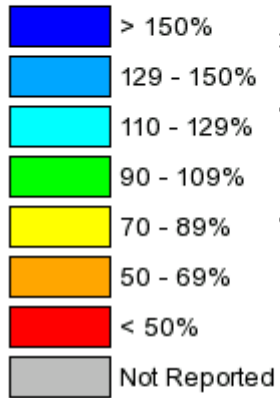
San Juan - Bluff, nr:



Monthly Precipitation for April 2006

(Averaged by Hydrologic Unit)

% Average

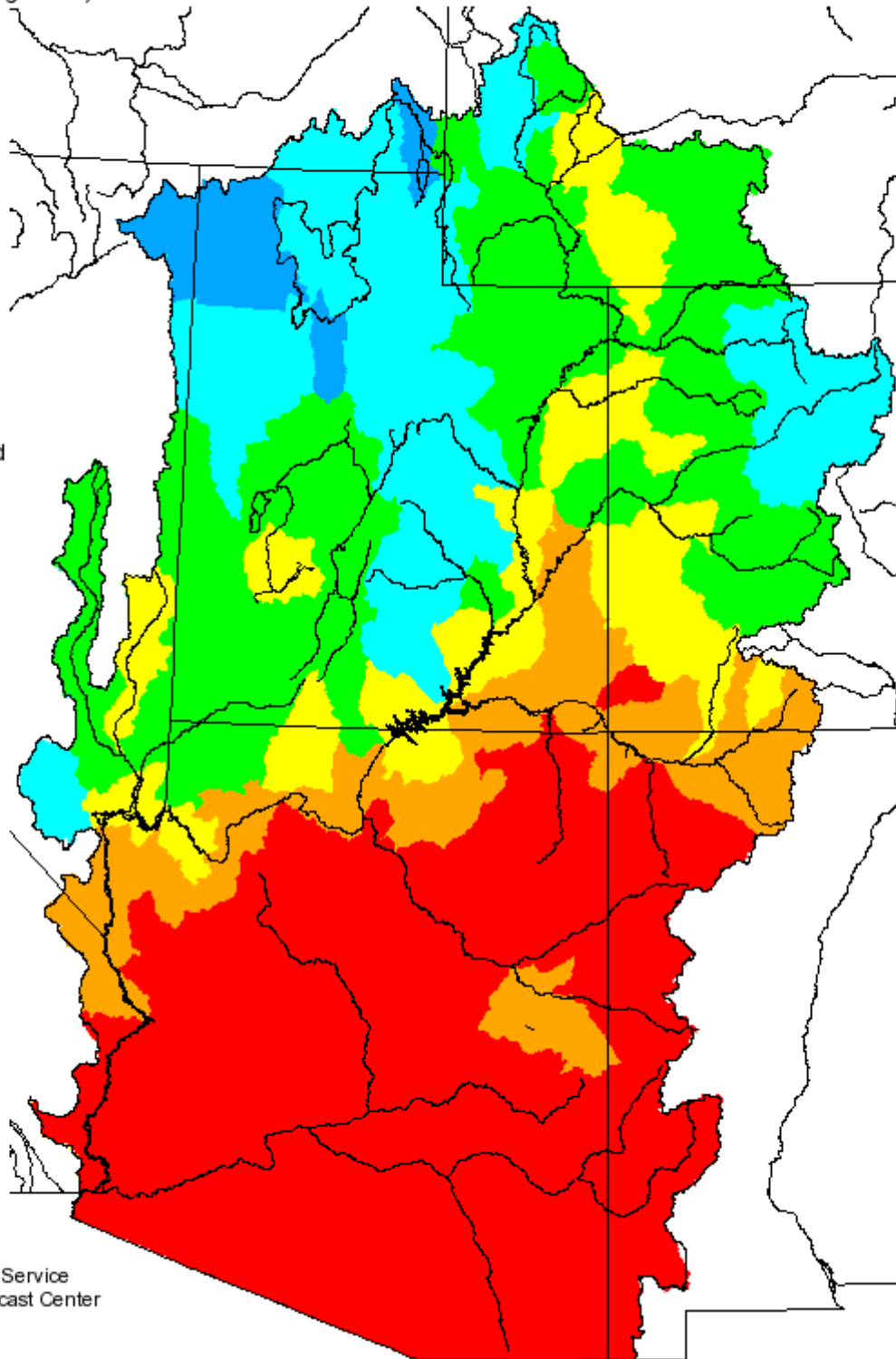
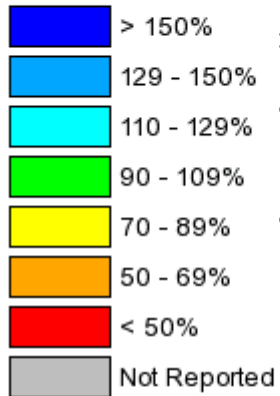


Prepared by
NOAA, National Weather Service
Colorado Basin River Forecast Center
Salt Lake City, Utah
www.cbafc.noaa.gov

Seasonal Precipitation, October 2005 - April 2006

(Averaged by Hydrologic Unit)

% Average



Prepared by
NOAA, National Weather Service
Colorado Basin River Forecast Center
Salt Lake City, Utah
www.cbrfc.noaa.gov

ADDITIONAL INFORMATION

Water supply forecasts take into consideration present hydrometeorological conditions and use average basin temperatures and precipitation for the forecast period. As the forecast season progresses, a greater portion of the future hydrologic and climatic uncertainty becomes known and monthly forecasts become more accurate.

Volume forecasts represent adjusted flows; that is, observed flows with upstream water use taken into account. Adjusted flows will closely approximate natural or unimpaired flows. However, not all upstream diversions or impoundments are measured or quantifiable. For specific adjustments used with each forecast point, consult the Guide to Water Supply Forecasting.

The Water Supply Outlook is issued monthly January through May by the Colorado Basin River Forecast Center, National Weather Service. It represents a coordinated effort between the National Weather Service, Natural Resources Conservation Service, Bureau of Reclamation, U.S. Geological Survey and local water district managers.

DEFINITIONS:

Acre-Foot:

The volume equal to one acre covered one foot deep (43,560 cubic feet).

Average:

The arithmetic mean. The sum of the values divided by the number of values.

Categories:

| | | | | |
|---|---------------------------|-------------------------|-------------------------|--------------------------------------|
| Much above Average Greater than 130% | Above Average 111-130% | Near Average 90-110% | Below Average 70-89% | Much Below Average- Less than 70% |
|---|---------------------------|-------------------------|-------------------------|--------------------------------------|

Forecast Period:

The period from April 1 through July 31.

Median:

The middle value. One half of the observed values are higher and half of the values are lower than this.

Most Probable Forecast:

Given the current hydrometeorological conditions to date, this is the best estimate of what the runoff volume will be this season.

Reasonable Maximum Forecast:

Given the current hydrometeorological conditions, the seasonal runoff that has a ten percent (10%) chance of being exceeded.

Reasonable Minimum Forecast:

Given the current hydrometeorological conditions, the seasonal runoff that has a ninety percent (90%) chance of being exceeded.

Water Year:

The period from October 1 through September 30.

NOTE: Data used in this report are provisional and are subject to revision.

For more information, or to be included on the mailing list, please contact:

Colorado Basin River Forecast Center, National Weather Service
2442 West North Temple, Salt Lake City, UT 84116