

WATER SUPPLY OUTLOOK

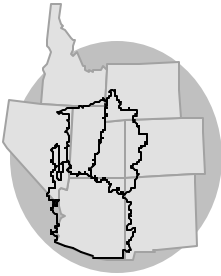
for the

EASTERN GREAT BASIN

COLORADO BASIN

RIVER FORECAST CENTER

NATIONAL WEATHER SERVICE, SALT LAKE CITY, UT

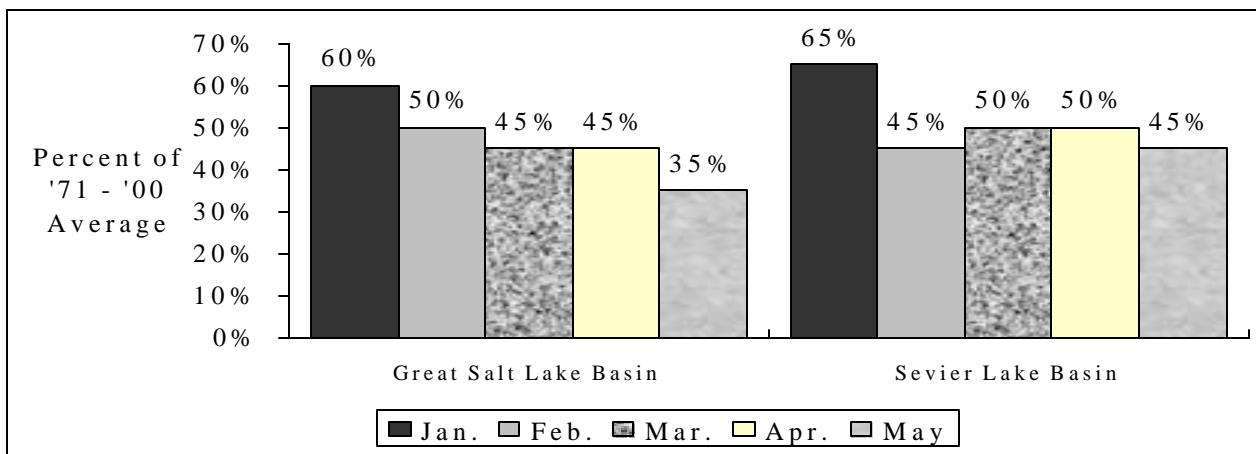


MAY 1, 2003

SUMMARY

As of May 1 much below average April-July runoff is expected throughout the Eastern Great Basin. Forecasts range from 10 to 55 percent of the 1971-2000 average in the Great Salt Lake Basin and 20 to 55 percent in the Sevier Lake Basin. Snowmelt occurred last month with little response in streamflow. Forecasts decreased slightly from last month in most basins, with the exception of the Bear River Basin, which decreased 15 percent overall.

APRIL - JULY VOLUME FORECASTS



INSIDE	
Summary	1
Great Salt Lake Basin	2
Sevier Basin	3
Specific Site Forecasts	4,5
EOM Reservoir Contents	6
Monthly Streamflows	7
Precipitation Maps	8,9
Additional Information	10

GREAT SALT LAKE BASIN

The May 1 water supply outlook is for much below average runoff in the Great Salt Lake Basin.

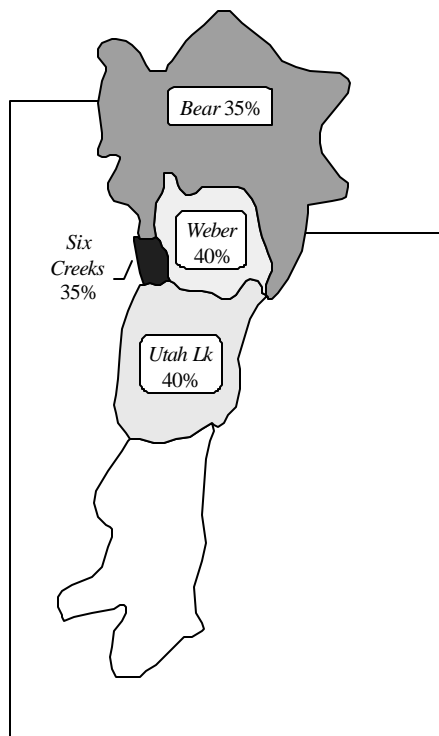
April-July streamflow forecasts for the Great Salt Lake Basin are as follows:

Bear River:
Much Below Average

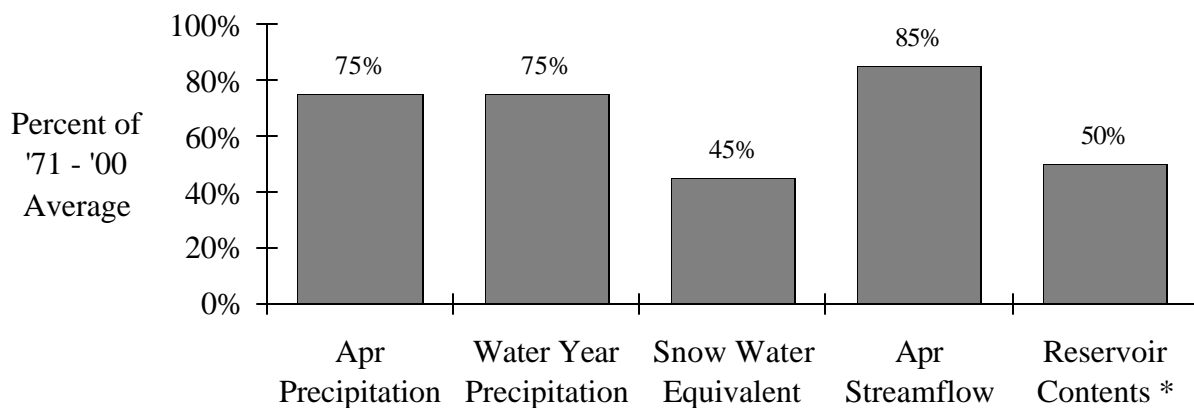
Weber River:
Much Below Average

Utah Lake:
Much Below Average

Six Creeks:
Much Below Average



BASIN CONDITIONS - MAY 1, 2003



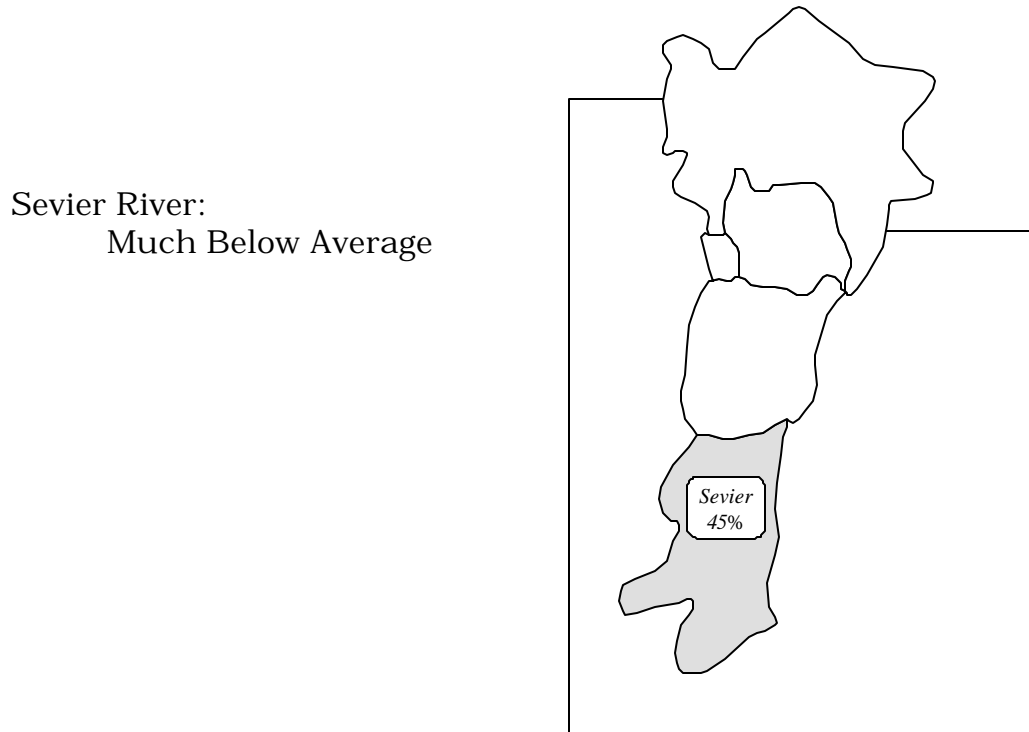
* Percent usable capacity, not percent average contents.

Specific site forecasts are listed beginning on page 4.

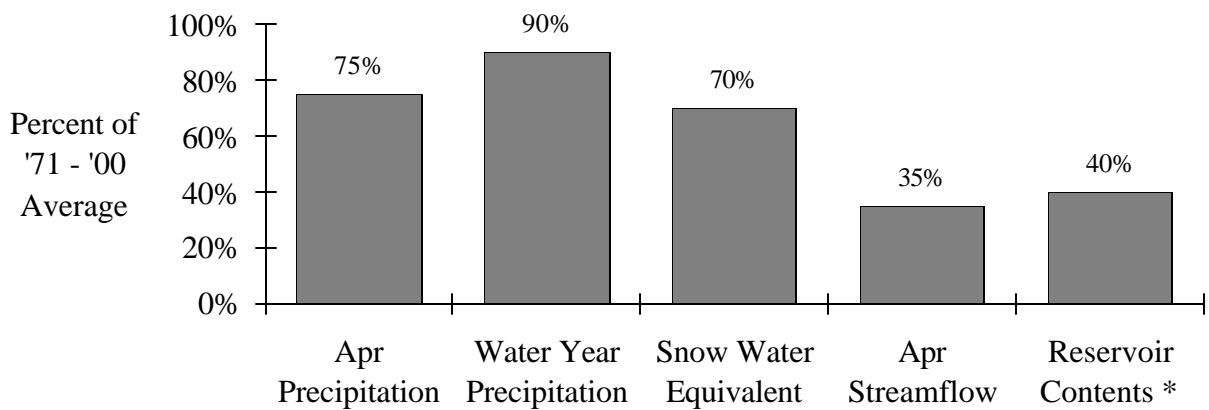
SEVIER LAKE BASIN

The May 1 water supply outlook is for much below average April-July runoff volumes in the Sevier Lake Basin.

April-July streamflow forecasts for the Sevier Lake Basin are as follows:



BASIN CONDITIONS - MAY 1, 2003



* Percent usable capacity, not percent average contents.

Specific site forecasts are listed beginning on page 5.

SPECIFIC SITE FORECASTS

Great Salt Lake Basin: April through July volume (kaf) forecasts (except where noted).

Stream	Station	Most Probable	Percent Avg.	Reas. Max	Reas. Min
BEAR	UTAH-WYOMING STATE LINE, NR	62	53	70	54
	WOODRUFF NARROWS RES	32	24	55	15
	MONTPELIER, NR, STEWART DAM, B	30	10	109	22
BIG CK	RANDOLPH, NR	1.3	27	4.8	0.34
SMITHS FORK	BORDER, NR	45	44	57	35
LOGAN	LOGAN, NR, STATE DAM, ABV	58	48	66	51
BLACKSMITH FORK	HYRUM, NR, UP&L DAM, ABV	18.4	38	22	15.3
SMITH AND MOREHOUSE CK	OAKLEY, NR	18	53	22	13.9
WEBER	OAKLEY, NR	61	50	76	46
	ROCKPORT RES, WANSHIP, NR	62	46	81	43
	COALVILLE, NR	62	45	80	44
	ECHO RES, ECHO, AT	80	45	109	51
	GATEWAY	113	32	171	55
CHALK CK	COALVILLE	15	33	27	2.7
LOST CK	LOST CK RES, CROYDON, NR	4.8	27	7.2	2.9
EAST CANYON CK	EAST CANYON RES, MORGAN, NR	10.7	35	14.6	7.4
SF OGDEN	HUNTSVILLE, NR	19	30	26	12
OGDEN	PINEVIEW RES, OGDEN, NR	37	28	57	17
WHEELER CK	HUNTSVILLE, NR	1.8	29	3.4	0.19
SPANISH FORK	CASTILLA, NR	26	34	68	7
PROVO	WOODLAND, NR	45	44	69	29
	HAILSTONE, NR	41	38	76	15.5
	DEER CK RES	55	44	95	23
AMERICAN FORK	AMERICAN FORK, NR, UP PWRPLNT,	9.5	30	15.7	4.4
JORDAN	UTAH LAKE, PROVO, NR	117	36	245	7.5
LITTLE COTTONWOOD CK	SALT LAKE CITY, NR	20	50	26	14.3
BIG COTTONWOOD CK	SALT LAKE CITY, NR	18	47	25	11.2
CITY CK	SALT LAKE CITY, NR	3.2	37	6.1	0.28
EMIGRATION CK	SALT LAKE CITY, NR	1.3	29	3.8	0
MILL CK	SALT LAKE CITY, NR	2.4	34	4.4	0.37
DELL FK	LITTLE DELL RES	2	29	5.1	0
PARLEYS CK	SALT LAKE CITY, NR	5.7	34	11.2	0.25
VERNON CK	VERNON, NR	0.32	22	0.53	0.19
S WILLOW CK	GRANTSVILLE, NR	1.46	46	3.3	0.63
SETTLEMENT CK	TOOELE, NR	0.6	30	1.06	0.32

Sevier Lake Basin: April through July volume (kaf) forecasts (except where noted).

Stream	Station	Most Probable	Percent Avg.	Reas. Max	Reas. Min
SEVIER	HATCH	29	53	45	12.7
	KINGSTON, NR	45	51	76	14.3
	PIUTE RES, MARYSVALE, NR	58	46	115	0.84
	VERMILLION DAM	83	48	153	12.6
	SIGURD, NR	86	46	181	30
	GUNNISON, NR, SAN PITCH, BLO	123	44	340	50
EF SEVIER	KINGSTON, NR	20	53	39	0.8
CLEAR CK	SEVIER, NR, DIV, ABV	12	55	21	3.5
SALINA CK	* SALINA	MB	0	0	0
CHICKEN CK	LEVAN, NR	0.93	21	1.3	0.67
OAK CK	OAK CITY, NR, LITTLE CK, ABV	0.63	39	0.86	0.46
BEAVER	BEAVER, NR	14	54	18.4	10.7
	MINERSVILLE RES, MINERSVILLE,	7.5	45	11	4.6
COAL CK	CEDAR CITY, NR	8.4	44	15	2

* Categorical Forecast - Current regulations allow for discontinuance of a streamflow volume forecast when observations at the point have not been taken or recorded for 5 years or longer. Recognizing the importance to the user, the NWS and NRCS have often continued to provide forecasts long after observations have ceased. Forecasters will now have the option to express these forecasts categorically (e.g. instead of issuing a forecast of 77 percent of average, the forecast would simply be “below average”). Specifically, the categories are:

MA - much above normal (greater than 130 percent of normal)

AN - above normal (111- 130 percent of normal)

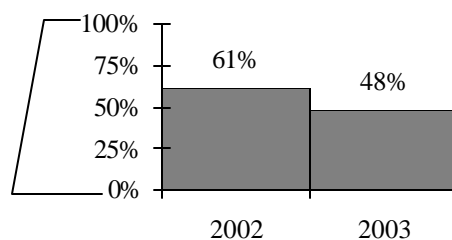
NN - near normal (90-110 percent of normal)

BN - below normal (70-89 percent of normal)

MB - much below normal (less than 70 percent of normal)

END OF MONTH RESERVOIR CONTENTS

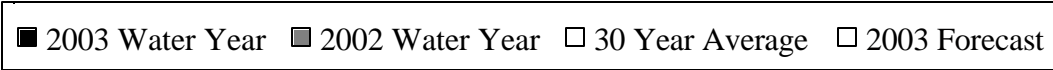
Percent of Usable Capacity



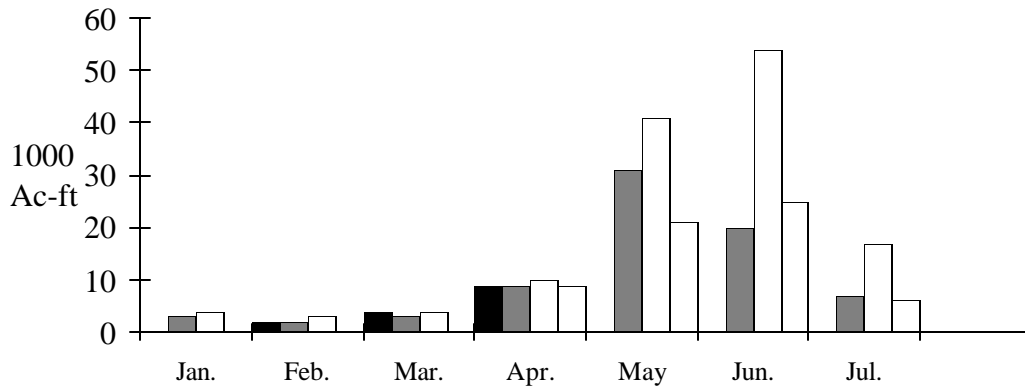
RESERVOIR (vol. in 1000 ac-ft)	Usable Capacity	EOM Usable Contents	Percent Usable Capacity (%)
Bear Lake	1421	396.7	28
Causey	7.1	4.9	69
Jordanelle	311	237.1	76
Deer Creek	149.7	93.6	63
East Canyon	49.5	16.3	33
Echo	73.9	47.1	64
Gunnison	20.3	3.6	18
Hyrum	15.3	missing	missing
Lost Creek	22.5	6.3	28
Minersville	23.3	6	26
Otter Creek	52.5	38.6	74
Pine View	110.1	68.2	62
Piute	71.8	33.7	47
Rockport	60.9	41.9	69
Sevier bridge	236	87.4	37
* Utah Lake	870.9	560.2	64
Willard	215	127.5	59
Woodruff Narrows	55.8	18.5	33
TOTAL	3751.3	1787.6	48
Flaming Gorge	3749	2673.1	71
Lake Powell	24322	12243.4	50
Moon Lake	36	24.1	67
Red Fleet	25.7	13.5	53
Scofield	65.8	missing	missing
Starvation	165.3	157.2	95
Steinaker	34.4	11.9	35
Strawberry	1105.9	817.7	74
Upper Stillwater	32.5	2.3	7

* Usable capacity taken at compromise Total does not include missing site usable capacities

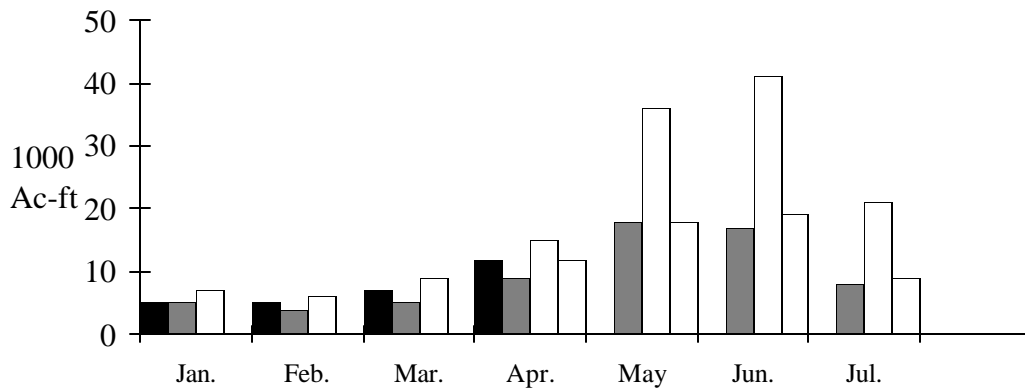
MONTHLY STREAMFLOWS



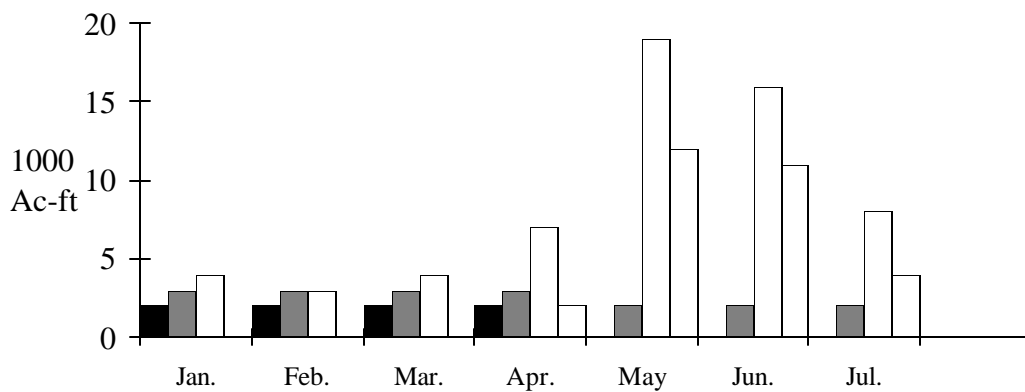
Weber Oakley, nr:



Logan - Logan, nr, State Dam, abv:



Sevier - Hatch:

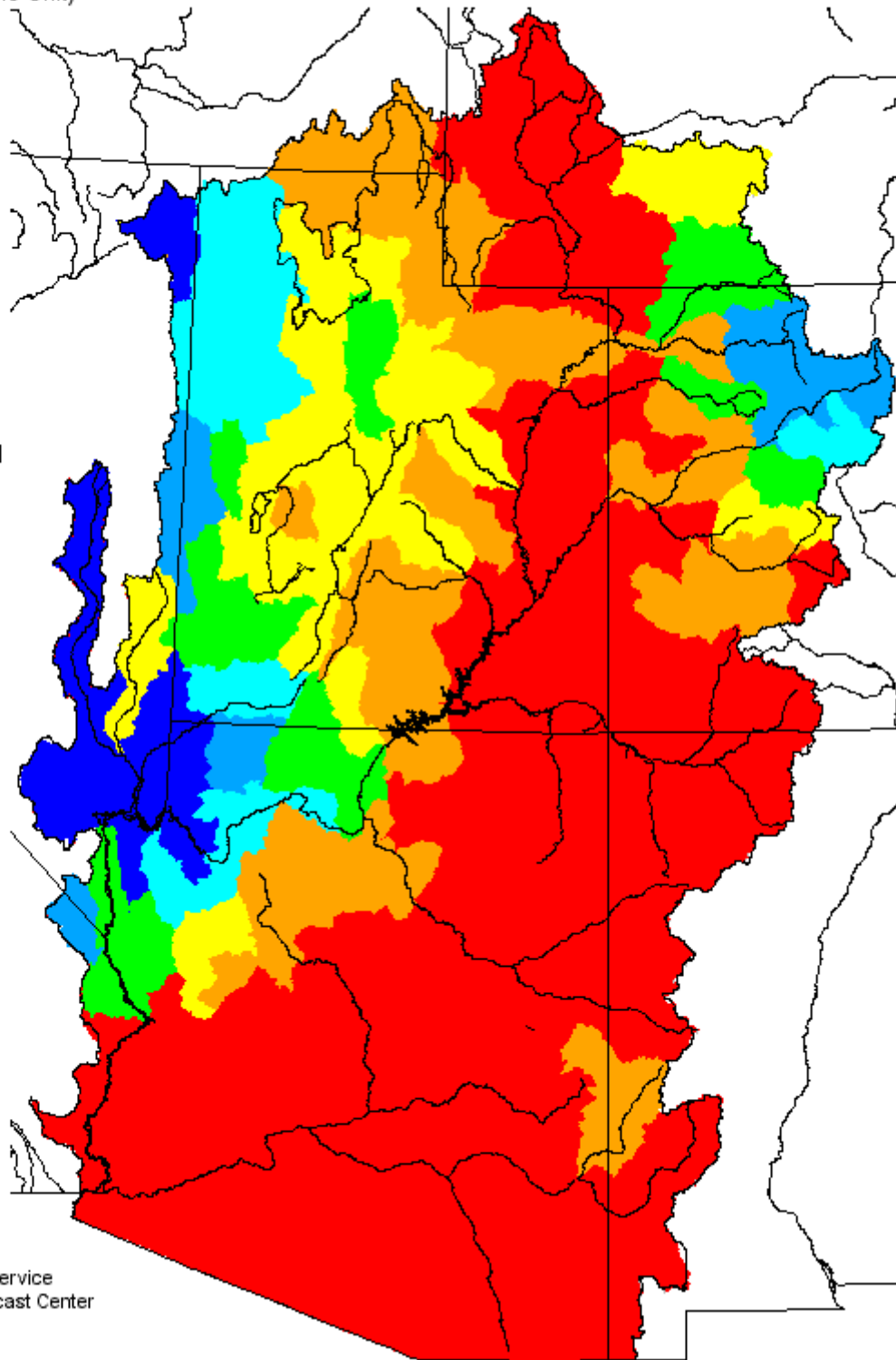
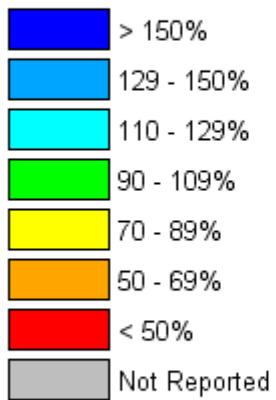


* observed data unavailable

Monthly Precipitation for April 2003

(Averaged by Hydrologic Unit)

% Average

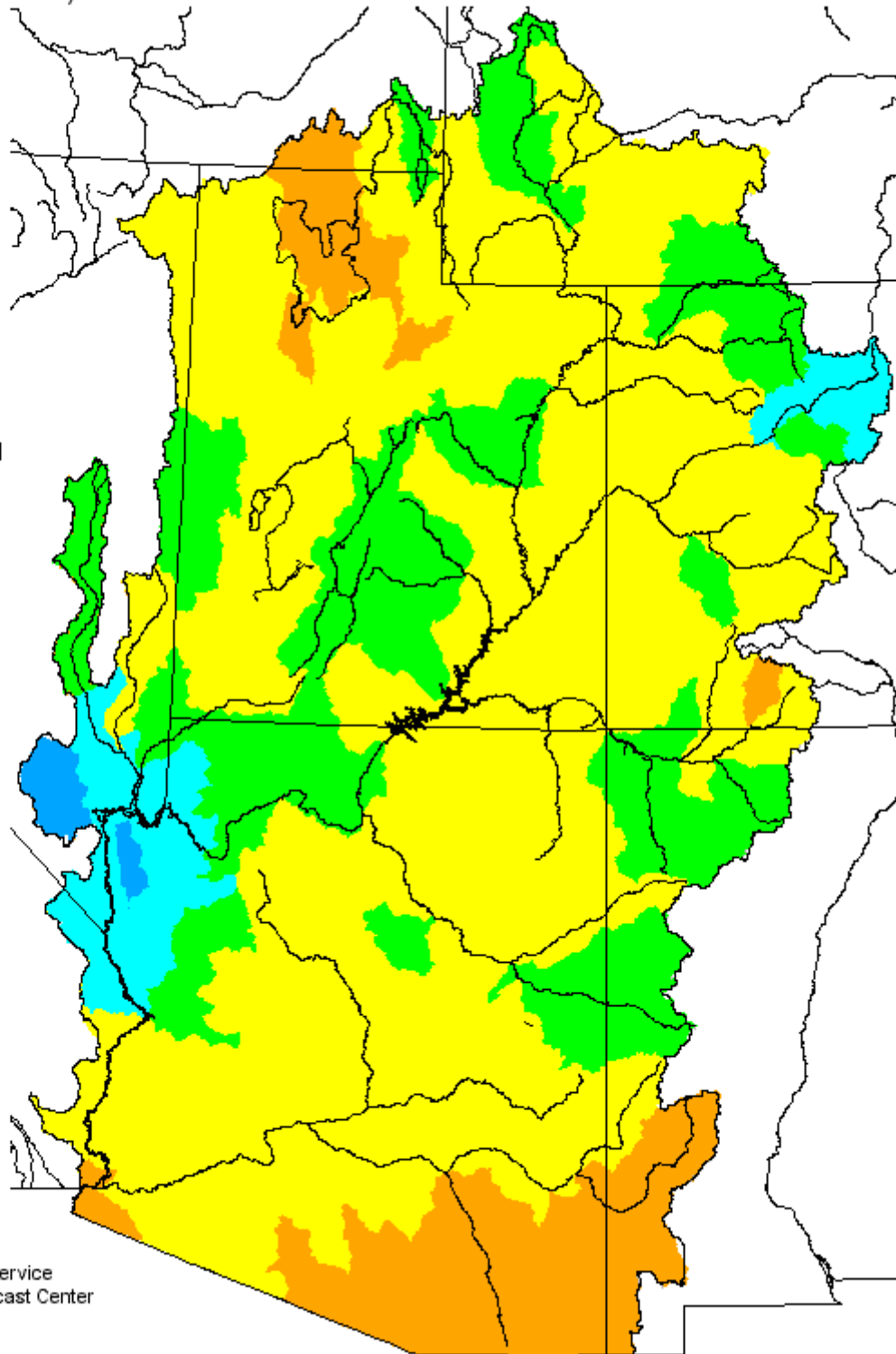
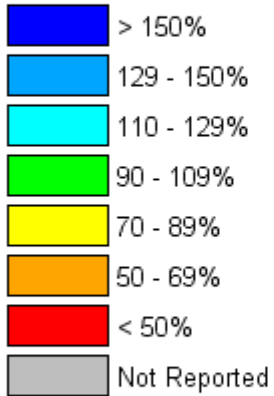


Prepared by
NOAA, National Weather Service
Colorado Basin River Forecast Center
Salt Lake City, Utah
www.cbrfc.noaa.gov

Seasonal Precipitation, October 2002 - April 2003

(Averaged by Hydrologic Unit)

% Average



Prepared by
NOAA, National Weather Service
Colorado Basin River Forecast Center
Salt Lake City, Utah
www.cbrfc.noaa.gov

ADDITIONAL INFORMATION

Water supply forecasts take into consideration present hydrometeorological conditions and use average basin temperatures and precipitation for the forecast period. As the forecast season progresses, a greater portion of the future hydrologic and climatic uncertainty becomes known and monthly forecasts become more accurate.

Volume forecasts represent adjusted flows; that is, observed flows with upstream water use taken into account. Adjusted flows will closely approximate natural or unimpaired flows. However, not all upstream diversions or impoundments are measured or quantifiable. For specific adjustments used with each forecast point, consult the Guide to Water Supply Forecasting.

The Water Supply Outlook is issued monthly January through May by the Colorado Basin River Forecast Center, National Weather Service. It represents a coordinated effort between the National Weather Service, Natural Resources Conservation Service, Bureau of Reclamation, U.S. Geological Survey and local water district managers.

DEFINITIONS:

Acre-Foot:

The volume equal to one acre covered one foot deep (43,560 cubic feet).

Average:

The arithmetic mean. The sum of the values divided by the number of values.

Categories:

Much above Average	Above Average	Near Average	Below Average	Much Below Average
Greater than 130%	111-130%	90-110%	70-89%	Less than 70%

Forecast Period:

The period from April 1 through July 31.

Median:

The middle value. One half of the observed values are higher and half of the values are lower than this.

Most Probable Forecast:

Given the current hydrometeorological conditions to date, this is the best estimate of what the runoff volume will be this season.

Reasonable Maximum Forecast:

Given the current hydrometeorological conditions, the seasonal runoff that has a ten percent (10%) chance of being exceeded.

Reasonable Minimum Forecast:

Given the current hydrometeorological conditions, the seasonal runoff that has a ninety percent (90%) chance of being exceeded.

Water Year:

The period from October 1 through September 30.

NOTE: Data used in this report are provisional and are subject to revision.

For more information, or to be included on the mailing list, please contact:
Colorado Basin River Forecast Center, National Weather Service

2242 W. North Temple · Salt Lake City, UT 84116 · (801) 524-5130 · <http://www.cbrfc.gov>