



US Army Corps
of Engineers



PLANNING ASSOCIATES
PROGRAM
CRITICAL THINK PIECE

***Short-Term Actions for
Aligning Projects with
Broad-Based Goals***

RED TEAM

M. DIETL, A. FOX, B. WALTERS

R-1



US Army Corps
of Engineers

Purpose

- *Stimulate efforts to shift the focus of water resource projects from localized goals and objectives toward broader, interagency, watershed, regional and national goals and objectives and set the stage for future successes in comprehensive integrated water resource planning and management*



THE RED ROVERS
CRITICAL THINK PIECE





US Army Corps
of Engineers

Introduction

- Identify actions to implement collaborative regional or watershed approaches to water-resource projects
- Explain how those actions would help align Corps efforts with the goals and efforts of other stakeholders
- Show how the actions compliment the Chief's Actions for Change, Civil Works Strategic Plan, and Planning and Policy CoP Charter



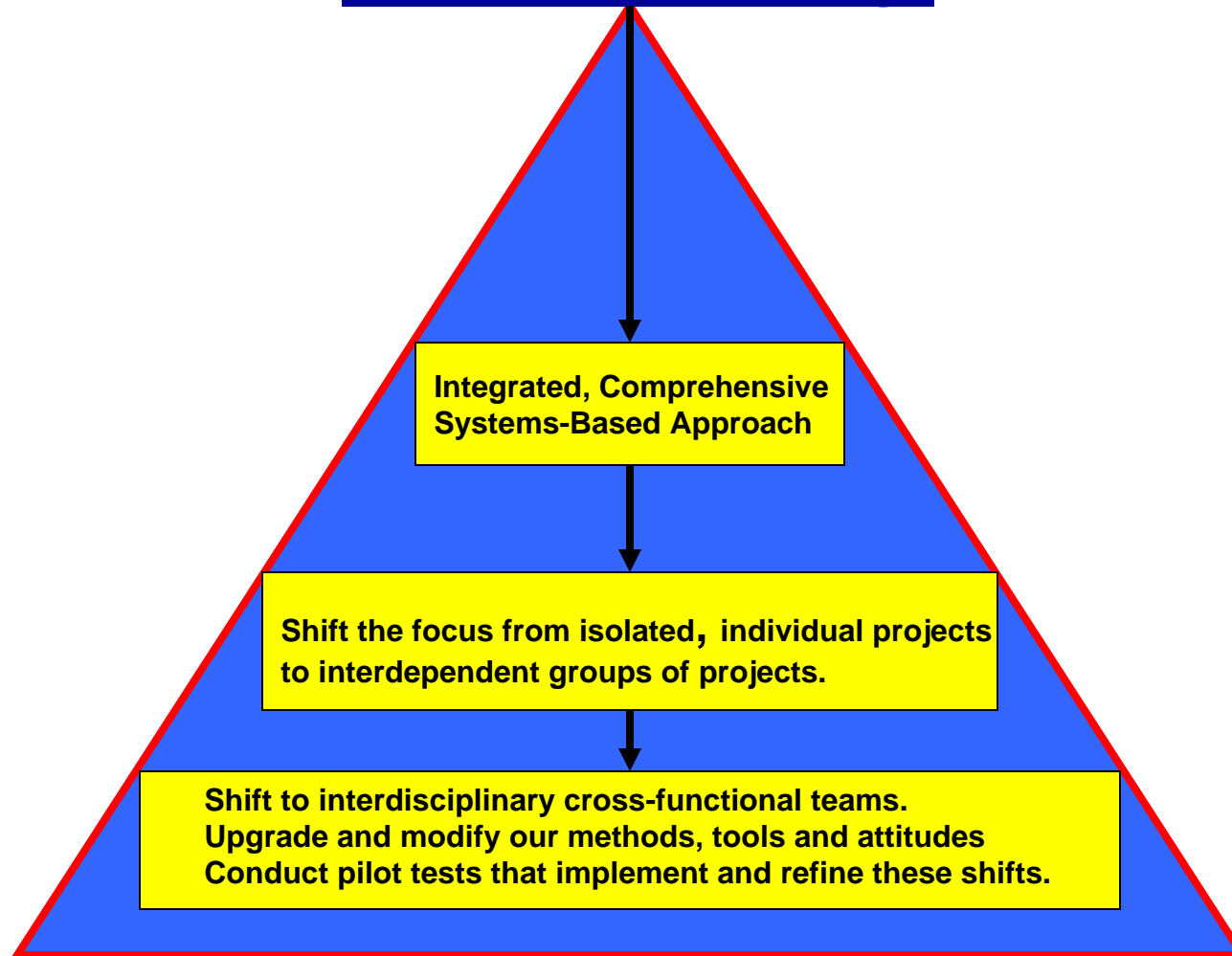
THE RED ROVERS
CRITICAL THINK PIECE





US Army Corps
of Engineers

Actions for Change



THE RED ROVERS
CRITICAL THINK PIECE





US Army Corps of Engineers

Regional/Watershed Planning

Red Rover Vision

Considering national, regional and local priorities



Leveraged Resources & Collaborated Efforts

All Stakeholders collaborate by sharing their:

- Experience
- Resources
- Data
- Tools
- Skills

to achieve broad-based goals by influencing a wider range of projects



THE RED ROVERS
CRITICAL THINK PIECE





US Army Corps
of Engineers

Actions for Alignment

- Implement standard work practices that facilitate internal collaboration between Corps Planning and Regulatory programs
- Develop a standard database to store and disseminate relevant data to encourage collaboration with other stakeholders
- Improve and integrate Corps sponsored planning and regulatory conferences



THE RED ROVERS
CRITICAL THINK PIECE

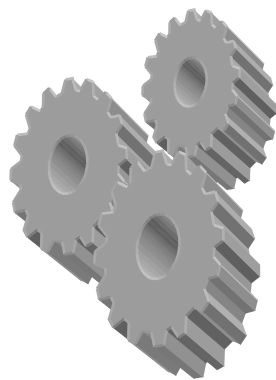




US Army Corps
of Engineers

Corps Roles

- The Corps is uniquely positioned to align public and private water resource projects with regional and watershed-based goals
 - Planning/constructing projects through its CW Program
 - Influencing private development through the Corps permitting process
 - Facilitating effective public and stakeholder involvement and education



THE RED ROVERS
CRITICAL THINK PIECE





US Army Corps
of Engineers

Internal Collaboration

- The Corps should develop and implement guidance for standard work practices that:
 - Increase collaboration between Civil Works Planning and Regulatory Offices
 - Identify and document important data and activities within given regions and watersheds
 - Store/disseminate relevant data
 - Apply data to Civil Works projects and regulatory permitting activities



THE RED ROVERS
CRITICAL THINK PIECE





US Army Corps
of Engineers

Planning/Regulatory Collaboration

- Encouraging internal collaboration and regional and watershed approaches
 - Designate District Planning Liaisons to Regulatory that serve as watershed coordinators
 - Share/utilize common data and information
 - Form cross-functional Watershed Teams
 - Include regulatory personnel on PDTs



R-9



THE RED ROVERS
CRITICAL THINK PIECE





US Army Corps
of Engineers

Watershed Coordinator

- Watershed Coordinator responsibilities should include:
 - Input Civil Works project information into ORM
 - Lead Watershed Teams
 - Ensure appropriate regulatory participation on Civil Works PDTs
 - Educate agencies and stakeholders on Corps authorities
 - Collect and share data with other agencies and stakeholders



R-10



THE RED ROVERS
CRITICAL THINK PIECE





US Army Corps
of Engineers

Interagency Collaboration

- Data sharing would facilitate collaboration with important stakeholders
 - Many Federal, State and Local organizations have existing “shareable” information
 - Individual Missions/Authorities
 - Regulatory Enforcement Missions/Authorities
 - Private developers/Industry
 - Non-Governmental Organizations



THE RED ROVERS
CRITICAL THINK PIECE





US Army Corps
of Engineers

Data and Opportunities

- The integration of CorpsMap, ORM2 and e-GIS is the ultimate goal of the Corps;
- ORM-2 database and the GIS module used by Regulatory should allow Planning and other spatial data to be imported to create additional data sets, until shared in e-GIS;
- General Van Antwerp has been an advocate of GIS information integration in the Corps, however, resources and priorities have not been shared or viewed equally.



THE RED ROVERS
CRITICAL THINK PIECE

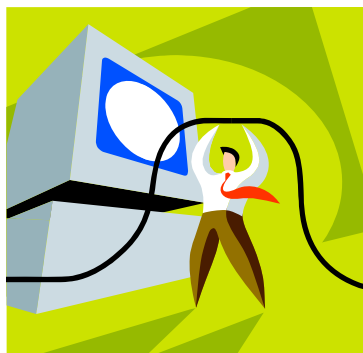




US Army Corps
of Engineers

Data Sharing

- External partnership in data sharing is underway with the integration of National Wildlife Inventory maps from the USFWS;
- The USEPA, USFWS and States are considered the “Big Three” in data sharing with the Corps.



THE RED ROVERS
CRITICAL THINK PIECE

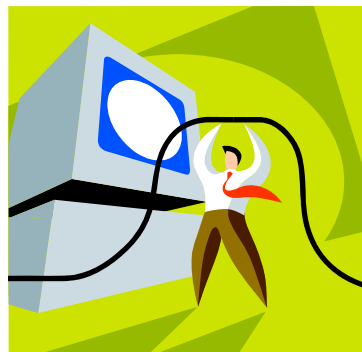




US Army Corps
of Engineers

Data and Opportunities

- As part of the e-GIS, additional interagency (attribute) information should be collected and recorded about important local and regional issues, which could impact project execution. Such information could include:
 - Primary stakeholders data
 - Important regulatory agencies and issues
 - Active Non-Governmental Organizations



THE RED ROVERS
CRITICAL THINK PIECE





US Army Corps
of Engineers

Interagency Collaboration

- Data sharing would facilitate collaboration with important stakeholders
 - Many Federal, State and Local organizations have existing “shareable” information
 - FWS’s National Wetland Inventory is using a similar database to ORM; could marry
 - Regulatory Enforcement Missions/Authorities
 - Private developers/Industry
 - Non-Governmental Organizations



THE RED ROVERS
CRITICAL THINK PIECE





US Army Corps
of Engineers

Data Storage and Dissemination

- A standardized data access system would be used to store and disseminate the data
 - Multi-platform compatible (Arc-INFO, ERDAS Imagine, Geo/SQL etc)
 - Most data available to the public on the internet
 - non-QC'ed, preliminary or otherwise proprietary and non-public data should be stored separately



R-16



THE RED ROVERS
CRITICAL THINK PIECE

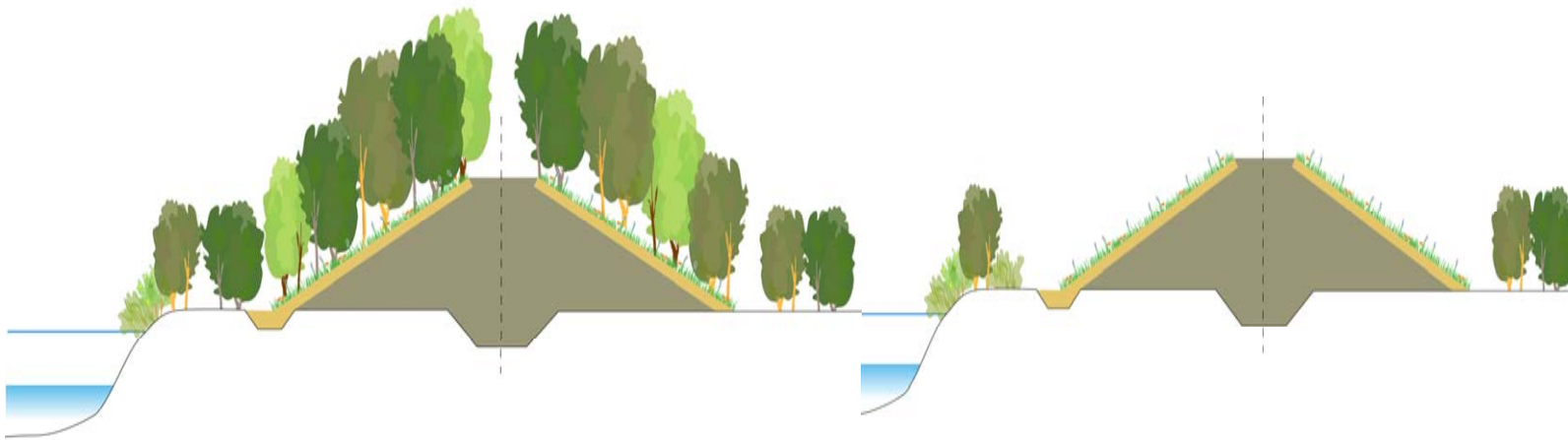




US Army Corps
of Engineers

Implementation Approaches

- Planning/Regulatory Liaison
- Watershed Mitigation Plans
- System Information



R-17



THE RED ROVERS
CRITICAL THINK PIECE





US Army Corps
of Engineers

Implementation Approaches

- Mitigation Banking (WRDA 2007, Section 2036)
- Develop federal funds acceptance letters (WRDA 2007, Section 2007)
- Repository of Interagency Agreements (Planning Website)



THE RED ROVERS
CRITICAL THINK PIECE





US Army Corps
of Engineers

Integrated Conferences

- National and Regional Interagency Conferences should include Planning, Regulatory, EPA and others
- Integration would further develop relationships, break down stove pipes, and build collaboration
- Contribute to the learning organization



THE RED ROVERS
CRITICAL THINK PIECE

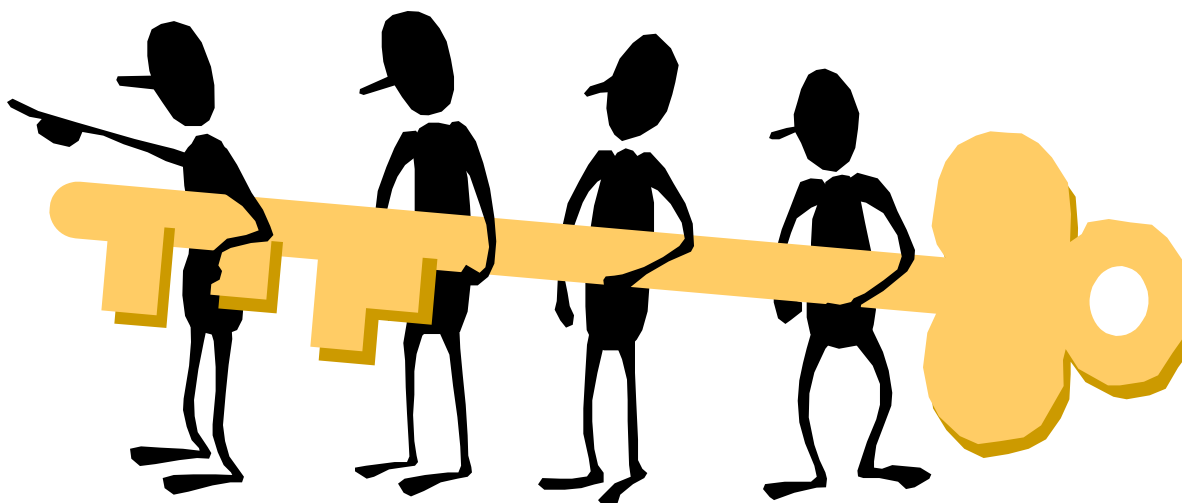




US Army Corps
of Engineers

Tying it All Together

- Civil Works Strategic Plan
- Actions for Change
- Environmental Operating Principles
- Planning PCop Charter



R-20



THE RED ROVERS
CRITICAL THINK PIECE





US Army Corps
of Engineers

Recommendations

- Improve Planning and Regulatory Relationships
- Integrate Planning and Regulatory Data
- Combine Meetings to Cut Costs and Further the Civil Works Mission



THE RED ROVERS
CRITICAL THINK PIECE





US Army Corps
of Engineers

Questions?

Adam Fox
Detroit District

Mike Dietl
Sacramento District

Bret Walters
Alaska District



THE RED ROVERS
CRITICAL THINK PIECE

